

Safety information

The multilingual Safety Information Book for this product is provided on the *IBM User's Guide CD*.

De meertalige publicatie met veiligheidsrichtlijnen (Safety Information Book) voor dit product vindt u op de CD met het IBM Handboek van de gebruiker.

يكون دليل معلومات السلامة متعدد اللغات الخاص بهذا البرنامج متاحاً بالقرص المدمج (CD) الخاص بدليل المستخدمين.

O Manual de Informações sobre Segurança multilíngüe para este produto é fornecido no CD do Manual do Usuário IBM.

Višejezična knjiga sigurnosnih informacija za ovaj produkt je dostupna na IBM-ovom CD-u Vodič za korisnike.

Vícejazyčná publikace Bezpečnostní instrukce (Safety Information) pro tento produkt je na IBM CD Uživatelská příručka (IBM User's Guide CD).

Den flersprogede bog med sikkerhedsforskrifter til dette produkt findes på cd'en IBM User's Guide.

Le manuel multilingue "Safety Information" de ce produit est fourni sur le CD du guide d'utilisation.

Το πολύγλωσσο εγχειρίδιο Safety Information Book για αυτό το προϊόν παρέχεται στο CD IBM User's Guide.

Das mehrsprachige Buch mit Sicherheitshinweisen für dieses Produkt ist auf der CD IBM Benutzerhandbuch enthalten.

מידע הבטיחות הרב-לשוני עבור מוצר זה מסופק בתקליטור IBM User's Guide.

A termékhez tartozó többnyelvű Biztonsági Információk Kézikönyv az IBM Felhasználói Kézikönyv CD-n található.

Il manuale multilingue relativo alle Informazioni sulla sicurezza di questo prodotto è fornito sul CD della Guida per l'utente IBM.

本製品の Safety Information Book は、多言語で記述されており、IBM User's Guide CD に入っています。

본 제품을 위한 안전에 관한 주의 사항은 IBM User's Guide CD에 있으며 다국어로 설명되어 있습니다.

Повеќејазичната книга за безбедносни информации за овој производ е сместена на IBM CD-то за корисници.

Den flerspråklige boken med sikkerhetsinformasjon for dette produktet ligger på CDen IBM User's Guide.

Podręcznik z informacjami dotyczącymi bezpieczeństwa w wielu językach dla niniejszego produktu znajduje się na dysku CD-ROM z Podręcznikiem użytkownika.

O manual multilingue de informações sobre segurança relativo a este produto está incluído no CD que contém o manual do utilizador (CD IBM User's Guide).

Инструкция по безопасности для этого продукта представлена на компакт-диске IBM User's Guide (Руководство пользователя).

IBM 用户指南 CD 上提供了本产品的多语言安全信息书籍。

Viacjazyčná kniha bezpečnostných informácií pre tento produkt je súčasťou CD IBM User's Guide.

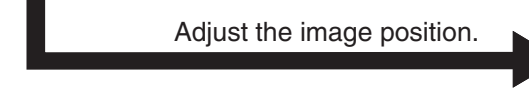
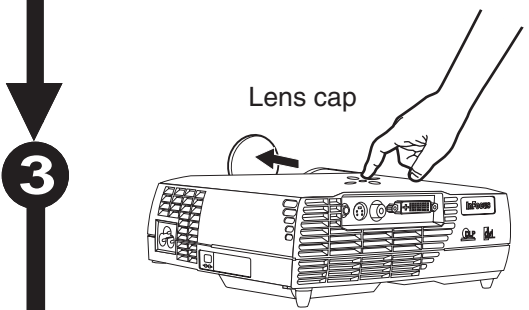
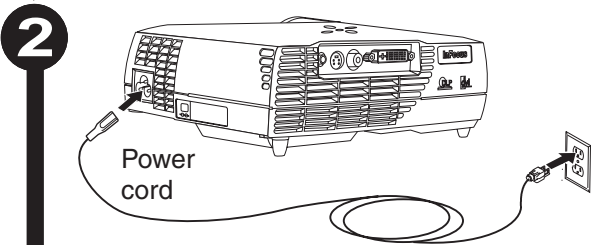
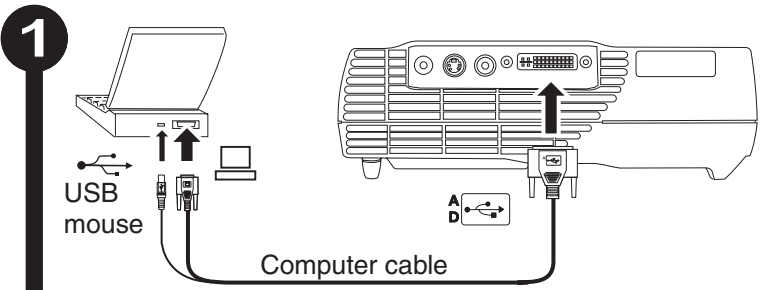
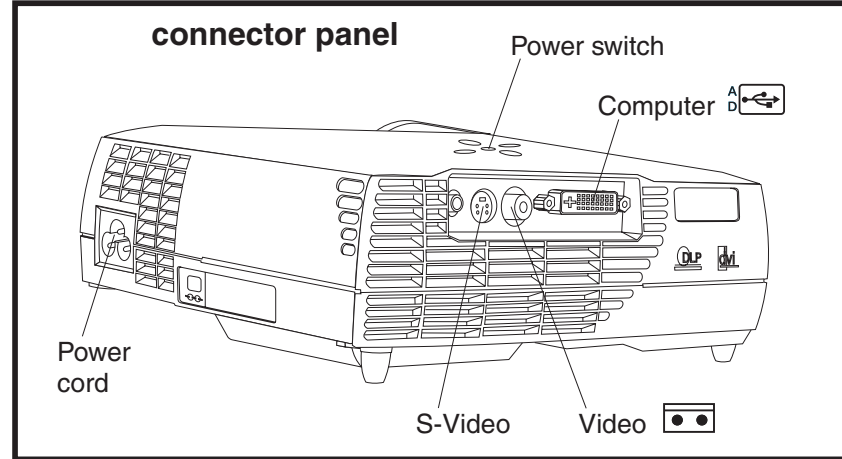
Knjiga z varnostnimi informacijami v več jezikih za ta izdelek je na voljo na zgoščenki z Navodili za uporabnike IBM.

El Manual de información de seguridad multilingüe para este producto se proporciona en el CD de la Guía del usuario de IBM.

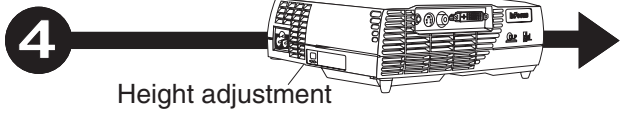
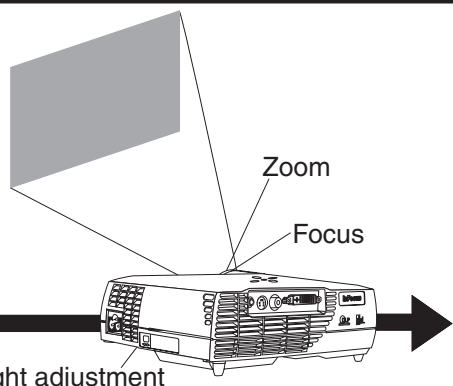
Säkerhetsanvisningar på flera språk finns på CDn IBM User's Guide.

本產品的多國語言「安全資訊手冊」隨附於 IBM 使用手冊 CD 中。

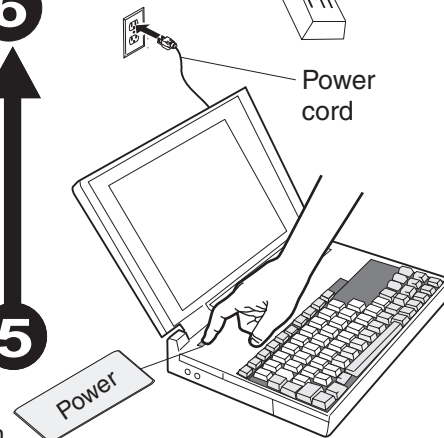
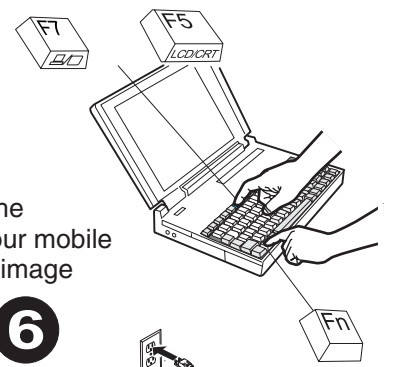
ILM300 QuickStart



Present!



If necessary, press the activation keys on your mobile computer to see the image on the screen.*



*Your computer may use a different key combination. Check your computer documentation for more information.

How to view the online User Guide

To view the online multi-language iLM300 MicroPortable Projector User Guide on the CD, do the following:

1. Insert the User Guide CD into the CD-ROM drive.
2. The CD will start. Go to step 5. If the CD does not start, click Start, and then click Run.
3. Type `e:\launch.bat`, where e: is the CD-ROM drive.
4. Click OK. The CD browser page is displayed.
5. Follow the on-screen instructions.

Additional Help

The iLM300 User Guide includes comprehensive instructions on setting up and operating your projector. Here are some common setup issues and how to solve them.

1. Nothing appears on the screen.

Make sure you have attached the power cable, removed the lens cap, and pressed the power button on the top of the projector.

2. All I see is the start up screen.

Make sure the computer cable is connected between the computer and the projector. Try pressing the mobile computer activation keys more than once. Some machines require pressing the keys twice to activate the image.

Be certain you are using the right combination of activation keys for your computer. Appendix C in the online User Guide contains a list of key combinations for many mobile computers.

3. There is no computer image on the screen.

The projector might not synchronize with the computer signal. Press the Menu button on the projector keypad or remote control to open the menus. From the Basic menu, select Reset to synchronize the projector settings with the computer. See Chapter 2 in the online User Guide for more

information about adjusting the image settings with on-screen menus.

4. The image fills the screen, but the text is fuzzy and hard to read.

Set the mobile computer display resolution to the projector resolution of 1024x768. If your mobile computer resolution is only 800x600 or 640x480, the projector automatically converts the resolution to 1024x768.

Adjust the focus ring and the zoom ring to obtain a sharper image.

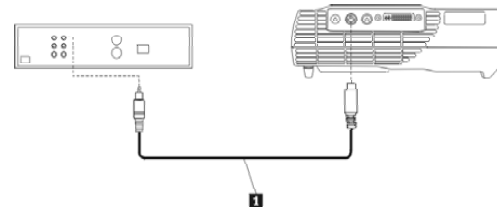
5. I can only see part of the computer image on the screen.

As in item 4. above, set the computer resolution to match the projector resolution. Use the activation keys to display the projected image.

Use the Keystone key on top of the projector to square the image.

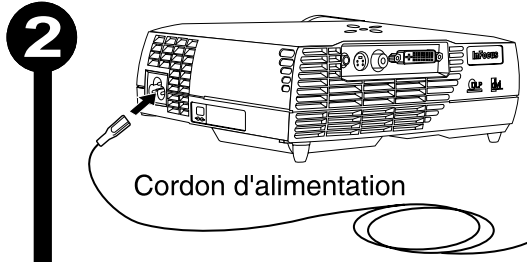
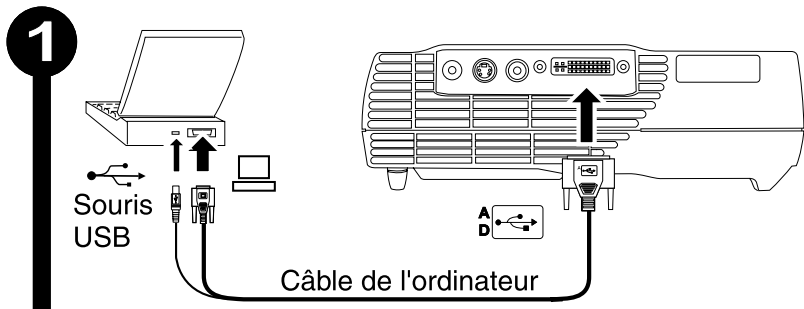
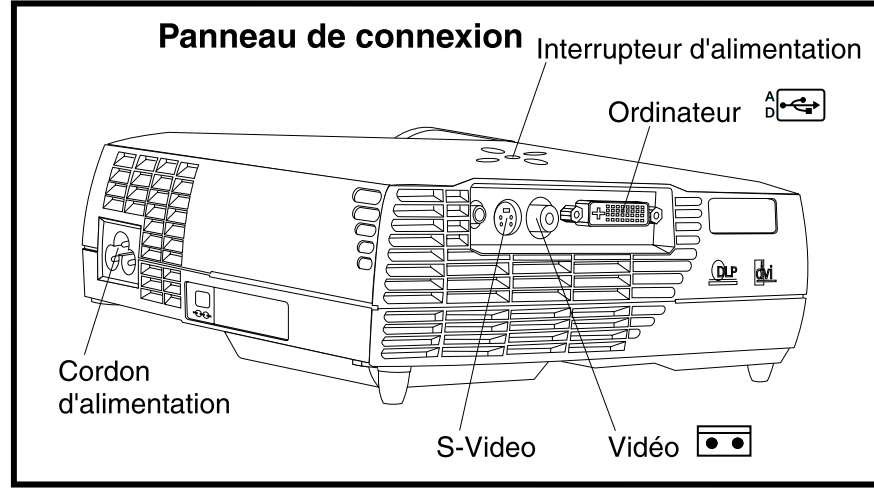
6. How do I attach digital video equipment to the projector?

Insert the video cable into the video connector in the player. Connect the opposite end to the projector S-Video connector.



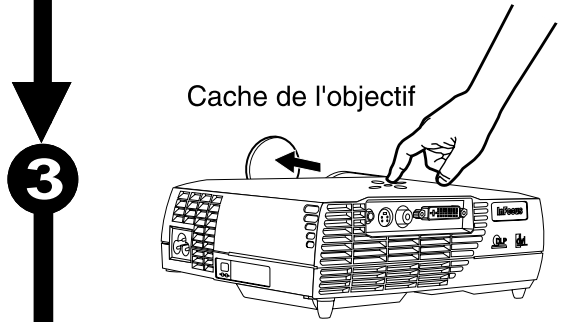
(C) Copyright International Business Machines Corporation 2002. All rights reserved. US Government Users Restricted Rights – Use, duplication or disclosure restricted by GSA ADP Schedule Contract with IBM Corp.

ILM300 QuickStart

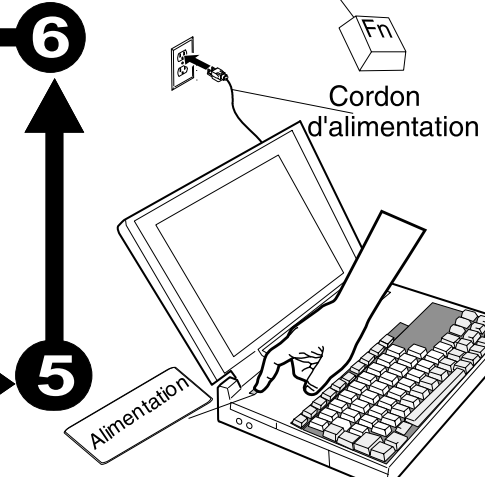
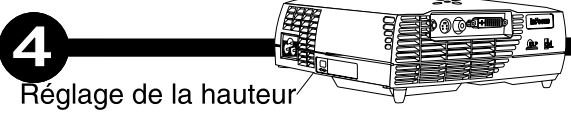
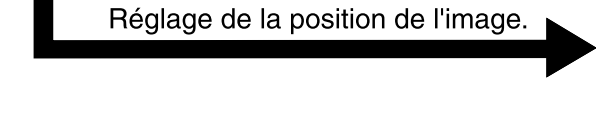
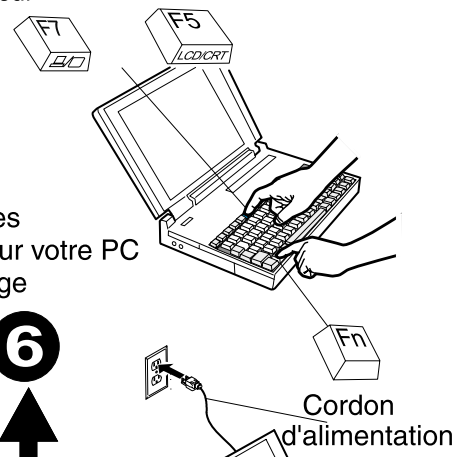


*Votre ordinateur peut utiliser une autre combinaison de touches. Pour plus d'informations reportez-vous à la documentation de votre ordinateur

Projetez !



Si nécessaire, appuyez sur les touches de déclenchement sur votre PC portable pour visualiser l'image à l'écran.*



Comment visualiser le guide d'utilisation en ligne

Pour visualiser le guide d'utilisation multilingue en ligne du Projecteur iLM300 MicroPortable sur le CD, procédez comme suit :

1. Insérez le CD contenant le guide d'utilisation dans l'unité de CD-ROM.
2. Le CD est lancé. Passez à l'étape 5. Si le CD n'est pas lancé, cliquez sur Démarrer, puis sur Exécuter.
3. Tapez `e:\launch.bat`, où e: est l'unité de CD-ROM.
4. Cliquez sur OK. La page du navigateur de CD s'affiche.
5. Suivez les instructions affichées à l'écran.

Aide supplémentaire

Le guide d'utilisation iLM300 contient des instructions détaillées pour installer et utiliser le projecteur. Quelques unes des problématiques les plus courantes liées à la configuration, ainsi que leur mode de résolution, sont présentées ci-après.

1. Rien ne s'affiche à l'écran.

Assurez-vous d'avoir correctement branché le cordon d'alimentation, retiré le cache de l'objectif, et appuyé sur l'interrupteur d'alimentation situé en haut du projecteur.

2. Seul l'écran de démarrage est affiché.

Assurez-vous que le cordon reliant l'ordinateur au projecteur est bien branché. Essayez d'appuyer plusieurs fois sur les touches de déclenchement de votre ordinateur portable. Sur certaines machines, il est nécessaire d'appuyer deux fois sur ces touches pour activer l'image.

Assurez-vous que vous utilisez la bonne combinaison de touches de déclenchement pour votre ordinateur. L'Annexe C du guide d'utilisation en ligne contient une liste de combinaisons de touches pour de nombreux ordinateurs portables.

3. Aucune image en provenance de l'ordinateur ne s'affiche à l'écran.

Il se peut que le projecteur ne soit pas synchronisé avec le signal de l'ordinateur. Appuyez sur le bouton Menu du clavier ou de la télécommande pour ouvrir les menus. Depuis le menu Basic, sélectionnez

Reset pour synchroniser les paramètres du projecteur avec l'ordinateur. Pour plus d'informations sur l'ajustement des paramètres relatifs à l'image avec les menus à l'écran, reportez-vous au chapitre 2 du guide d'utilisation en ligne.

4. L'image remplit l'écran, mais le texte est flou et difficile à lire.

Définissez la résolution de l'écran du PC portable comme celle du projecteur (1024 x 768). Si la résolution de votre PC portable est seulement 800 x 600 ou 640 x 480, le projecteur la convertit automatiquement à 1024 x 768.

Réglez la bague de la variation de la focale et le zoom pour obtenir une image plus nette.

5. Une partie seulement de l'image de l'ordinateur est affichée à l'écran.

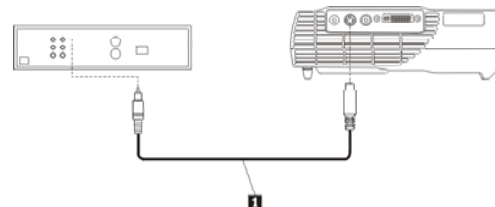
Comme au point 4. ci-dessus, définissez la résolution de l'ordinateur comme celle du projecteur. Utilisez les touches de déclenchement pour afficher l'image projetée.

Utilisez la touche Keystone en haut du projecteur pour que l'image soit carrée.

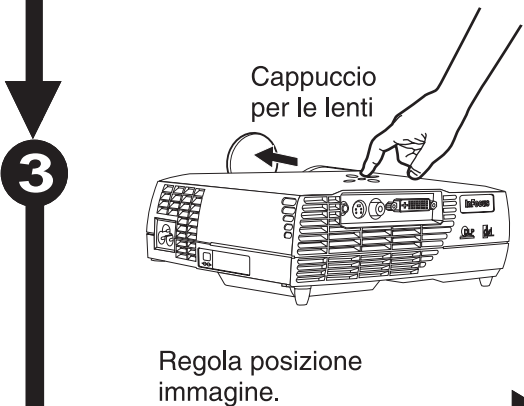
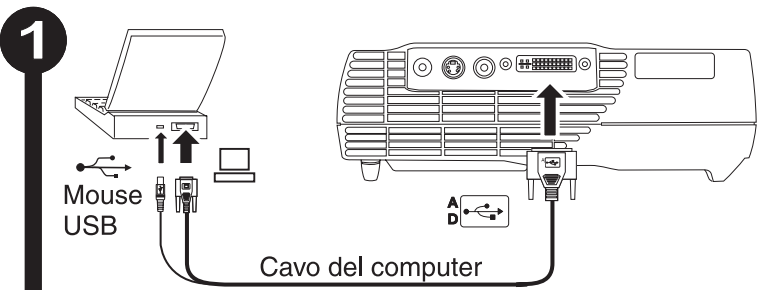
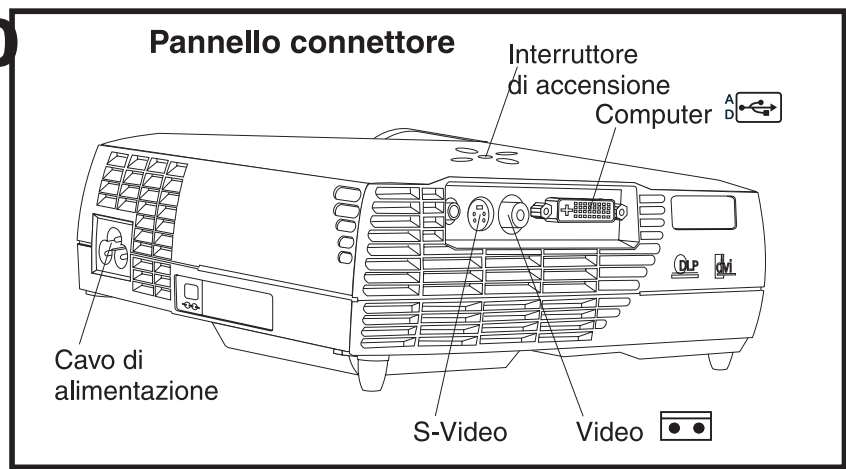
6. Comment connecter un équipement vidéo numérique au projecteur ?

Insérez le câble vidéo dans le connecteur vidéo du lecteur.

Connectez l'autre extrémité au connecteur S-Video du projecteur.



Avvio rapido ILM300



Pronto!



Se necessario, premere i tasti di attivazione sul computer portatile per visualizzare l'immagine sullo schermo.*



*E' possibile che il computer in uso abbia una diversa combinazione dei tasti. Consultare la documentazione relativa per ulteriori informazioni.

Come visualizzare la Guida in linea per l'utente

Per visualizzare la guida per l'utente multilingue in linea iLM300 MicroPortable Projector presente sul CD, eseguire le seguenti operazioni:

1. Inserire il CD della guida per l'utente nell'unità CD-ROM.
2. Il CD verrà avviato. Andare al passo 5. Se il CD non si avvia, fare clic su Avvio e poi su Esegui.
3. Immettere **e: \I aunch. bat**, dove e: indica la lettera identificativa dell'unità CD-ROM.
4. Fare clic su OK. La pagina del browser del CD viene visualizzata.
5. Seguire le istruzioni visualizzate.

Aiuto aggiuntivo

La guida per l'utente iLM300 comprende istruzioni sull'installazione ed il funzionamento del proiettore. Di seguito sono riportate alcune istruzioni sull'installazione e sulla risoluzione dei problemi.

1. Sullo schermo non viene visualizzato niente.

Verificare che sia stato collegato il cavo di alimentazione, rimosso il cappuccio per le lenti e selezionato il pulsante di alimentazione, posto sulla parte superiore del proiettore.

2. Viene visualizzato il pannello di avvio.

Verificare che il cavo dell'elaboratore sia collegato all'elaboratore e al proiettore. Premere i tasti di attivazione dell'elaboratore portatile più di una volta. Alcune macchine richiedono la doppia selezione de tasti per attivare l'immagine.

Verificare che sia utilizzata la corretta combinazione di tasti di attivazione. L'appendice C nella guida per l'utente contiene un elenco di combinazioni dei tasti per molti computer portatili.

3. Non è visualizzata nessuna immagine del computer sullo schermo.

E' possibile che il proiettore non sia sincronizzato con il segnale dell'elaboratore. Per visualizzare i menu, premere il pulsante Menu sulla tastierina del proiettore o sul telecomando. Nel menu Di base, selezionare Reimposta per sincronizzare le impostazioni del proiettore con l'elaboratore. Consultare il capitolo 2 della guida per ulteriori informazioni sulla regolazione delle impostazioni dell'immagine con i menu su schermo.

4. L'immagine riempie lo schermo ma il testo è confuso e difficile da leggere.

Impostare la risoluzione video dell'elaboratore portatile ad una risoluzione del proiettore di 1024x768. Se la risoluzione dell'elaboratore portatile è solo 800x600 o 640x480, il proiettore converte la risoluzione a 1024x768 in modo automatico.

Regolare l'anello di messa in evidenza e l'anello dello zoom per visualizzare un'immagine più nitida.

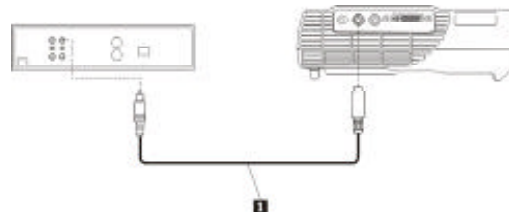
5. E' possibile visualizzare solo una parte dell'immagine.

Come riportato nel passo 4., impostare la risoluzione dell'elaboratore al fine di corrispondere alla risoluzione del proiettore. Utilizzare i tasti di attivazione per visualizzare l'immagine proiettata.

Utilizzare il tasto Keystone, posto sulla parte superiore del proiettore per inquadrare l'immagine.

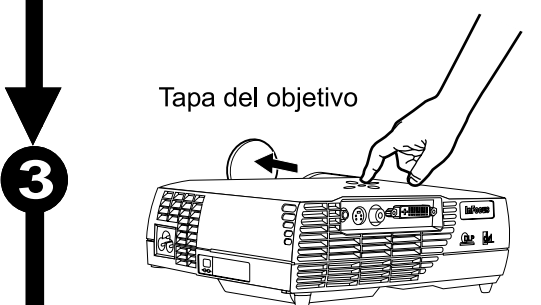
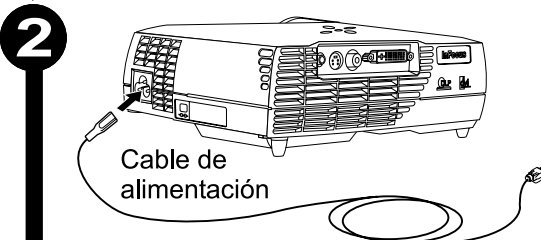
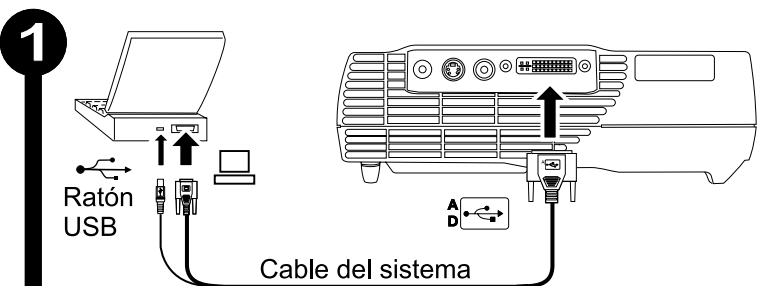
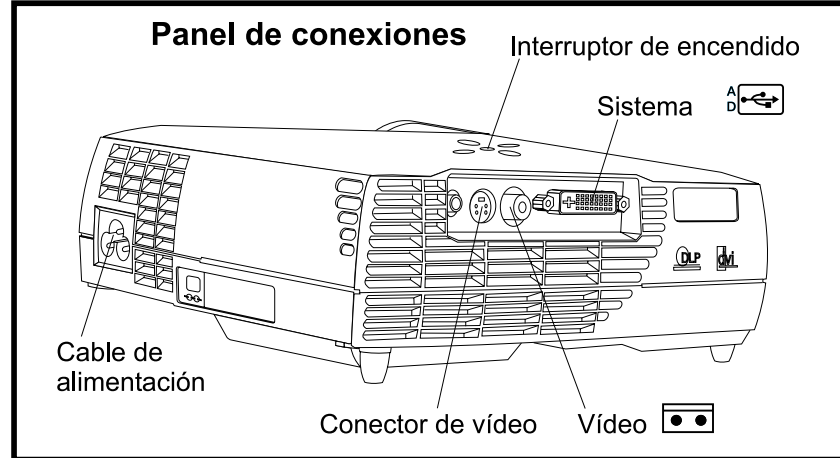
6. Come posso collegare l'attrezzatura video digitale al proiettore?

Inserire il cavo video al relativo connettore del lettore. Collegare l'estremità opposta al connettore video-S del proiettore.



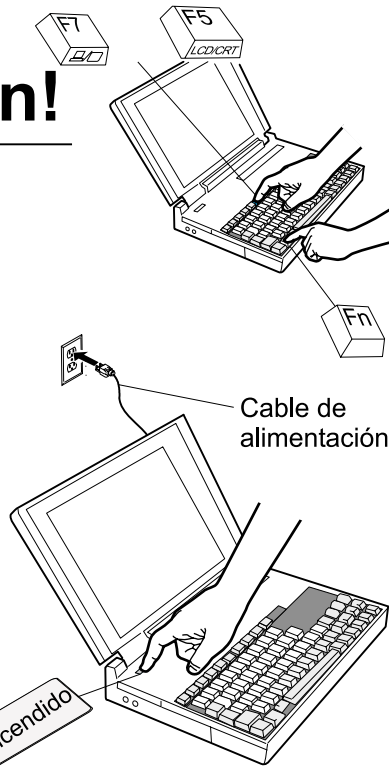
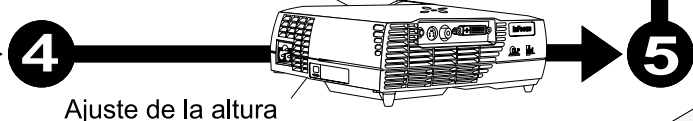
(C) Copyright International Business Machines Corporation 2002. Tutti i diritti riservati.

ILM300 Inicio rápido



¡Haga la presentación!

Si es necesario, pulse las teclas de activación en el portátil para ver la imagen en pantalla.*



*Es posible que su sistema utilice una combinación de teclas diferente. Consulte la documentación de su sistema para más información.

Cómo ver la Guía del usuario en línea

Para ver la publicación en línea para varios idiomas de iLM300 Proyector microportátil Guía del usuario del CD, realice lo siguiente:

1. Inserte el CD de la Guía del usuario en la unidad de CD-ROM.
2. Se iniciará el CD. Vaya al paso 5. Si el CD no se inicia, pulse Inicio y, a continuación, pulse Ejecutar.
3. Escriba e:\launch.bat, siendo e: la unidad de CD-ROM.
4. Pulse Aceptar. Aparecerá la página del navegador del CD.
5. Siga las instrucciones que aparecen por pantalla.

Ayuda adicional

La publicación iLM300 Guía del usuario incluye instrucciones completas sobre la puesta a punto y manejo del proyector. A continuación figuran algunos de los problemas comunes de puesta a punto y cómo resolverlos.

1. No aparece nada en pantalla.

Asegúrese de haber enchufado el cable de alimentación, haber quitado la tapa del objetivo y haber pulsado el interruptor de encendido de la parte superior del proyector.

2. Todo lo que veo es la pantalla de inicio.

Asegúrese de que el cable del sistema está conectado del sistema al proyector. Intente pulsar las teclas de activación del sistema portátil una vez más. Algunas máquinas requieren que se pulsen las teclas dos veces para activar la imagen.

Asegúrese de que utiliza la combinación de teclas de activación correcta en su sistema. El apéndice C de la Guía de usuario en línea contiene una lista de las combinaciones de tecla para sistemas portátiles.

3. No aparece ninguna imagen del sistema en pantalla.

El proyector no puede sincronizar con el cable del sistema. Pulse el botón Menu en el área de teclado del proyector o en el mando a distancia para abrir los menús. Desde el menú Basic, seleccione Reset para sincronizar los valores del proyector con el sistema. Consulte le Capítulo 2 de la Guía del usuario en línea si desea más información acerca de cómo ajustar los valores de la imagen con los menús de pantalla.

4. La imagen aparece en toda la pantalla pero el texto está borroso y es difícil leerlo.

Establezca la resolución de pantalla del sistema portátil en la resolución de proyector 1024x768. Si la resolución de su sistema portátil es sólo 800x600 ó 640x480, el proyector convierte automáticamente la resolución a 1024x768.

Ajuste en anillo de enfoque y el de zoom para obtener una imagen nítida.

5. Sólo puedo ver parte de la imagen del sistema en pantalla.

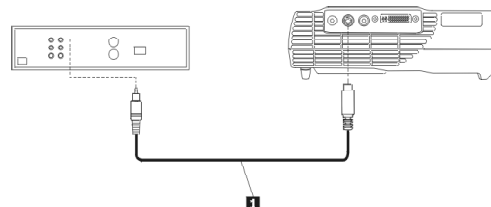
Igual que en el punto 4 anterior, establezca la resolución del sistema para que coincida con la resolución del proyector. Utilice las teclas de activación para visualizar la imagen proyectada.

Utilice la tecla Keystone de la parte superior del proyector para encuadrar la imagen.

6. ¿Cómo debo conectar equipo de vídeo digital al proyector?

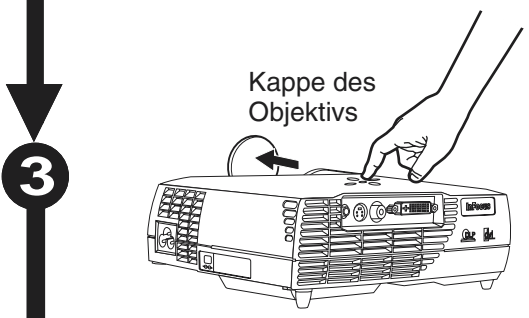
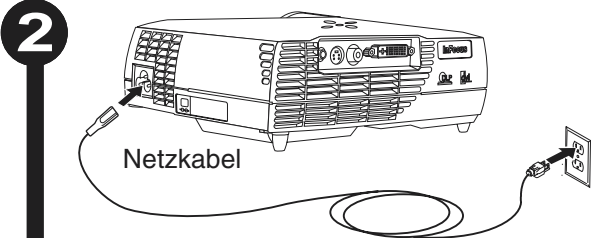
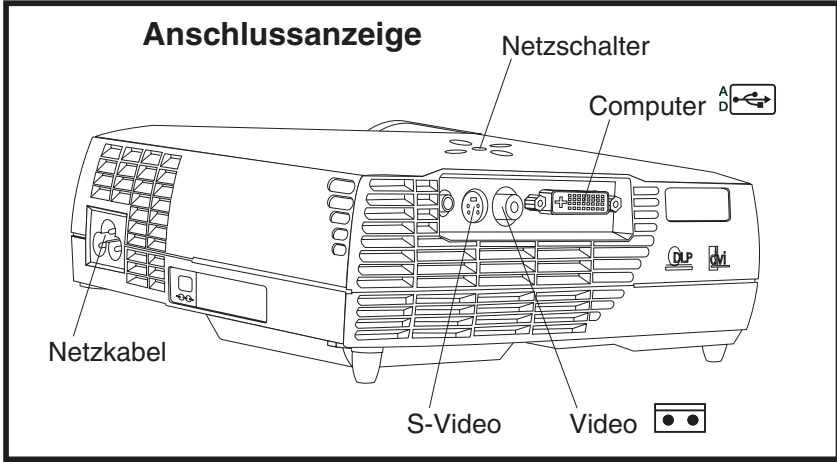
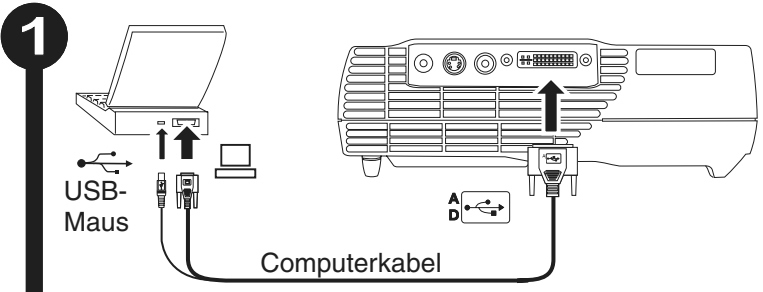
Inserte el cable del vídeo en el conector de vídeo.

Conecte el extremo opuesto al conector de vídeo del proyector.



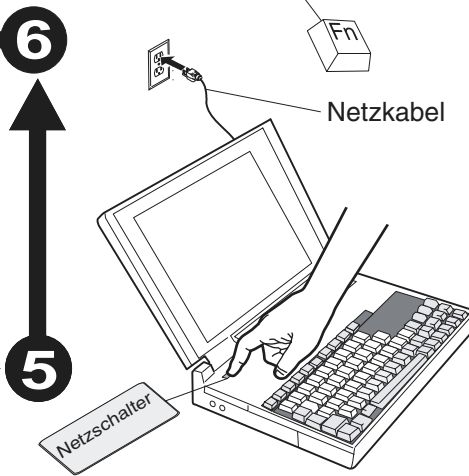
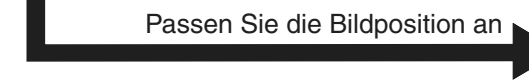
(C) Copyright International Business Machines Corporation 2002. Todos los derechos reservados. Derechos restringidos a los usuarios del gobierno de Estados Unidos – El uso, la duplicación o divulgación quedan restringidos por el GSA ADP Schedule Contract con IBM Corp.

ILM300 QuickStart



Vorhanden!

Drücken Sie ggf. die Aktivierungstasten am tragbaren Computer, damit das Bild auf dem Bildschirm angezeigt wird.*



*Möglicherweise wird bei Ihrem Computer eine andere Tastenkombination verwendet. Weitere Informationen finden Sie in der Dokumentation zum Computer.

Zusätzliche Hilfe

Das Benutzerhandbuch zum iLM300 enthält umfassende Anweisungen zum Einrichten und Betreiben des Projektors. Im Folgenden werden einige häufig auftretende Probleme bei der Installation sowie die entsprechenden Maßnahmen erläutert.

1. Der Bildschirm bleibt leer.

Stellen Sie sicher, dass das Netzkabel angeschlossen ist, die Kappe vom Objektiv entfernt und der Netzschalter oben auf dem Projektor gedrückt wurde.

2. Nur die Startanzeige wird angezeigt.

Stellen Sie sicher, dass der Computer und der Projektor über das Computerkabel miteinander verbunden sind. Drücken Sie die Aktivierungstasten des tragbaren Computers mehrmals. Bei einigen Maschinen müssen Sie die Tasten zweimal drücken, um das Bild zu aktivieren.

Achten Sie darauf, dass Sie die richtige Kombination von Aktivierungstasten für den Computer drücken. Anhang C im Online-Benutzerhandbuch enthält eine Liste der Tastenkombinationen für viele tragbare Computer.

3. Auf dem Bildschirm wird kein Computerbild angezeigt.

Der Projektor ist möglicherweise nicht mit dem Computersignal synchronisiert. Drücken Sie die Taste "Menu" am Tastenblock des Projektors oder an der Fernbedienung, um die Menüs zu öffnen. Wählen

Sie im Menü "Basic" die Option "Reset" aus, um die Projektoreinstellungen mit dem Computer zu synchronisieren. Weitere Informationen zum Anpassen der Bildeinstellungen an die Menüs auf dem Bildschirm finden Sie in Kapitel 2 des Online-Benutzerhandbuchs.

4. Das Bild erscheint auf dem Bildschirm, der Text ist jedoch verschwommen und nur schwer zu lesen.

Stellen Sie die Bildschirmauflösung des tragbaren Computers auf die Projektorauflösung von 1024x768 ein. Wenn die Auflösung des tragbaren Computers nur auf 800x600 oder 640x480 eingestellt ist, setzt der Projektor die Auflösung automatisch in einen Wert von 1024x768 um.

Passen Sie den Bildschärfenring und den Zoomring an, um ein schärferes Bild zu erhalten.

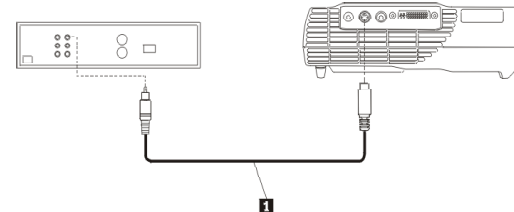
5. Nur ein Teil des Computerbildes ist auf dem Bildschirm sichtbar.

Stellen Sie die Computerauflösung wie unter Punkt 4 so ein, dass sie der Projektorauflösung entspricht. Verwenden Sie die Aktivierungstasten, um das projizierte Bild anzuzeigen.

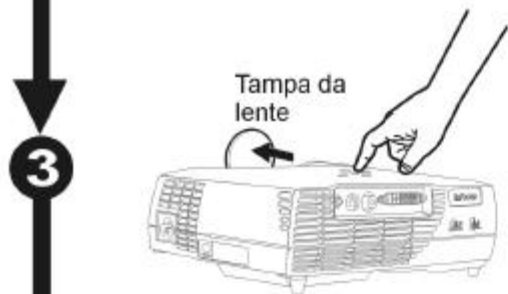
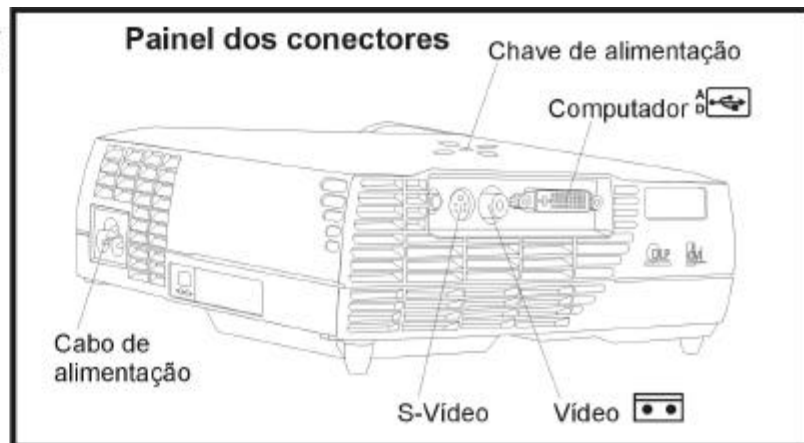
Verwenden Sie die Taste "Keystone" oben auf dem Projektor, damit das Bild quadratisch dargestellt wird.

6. Wie wird ein digitales Videogerät an den Projektor angeschlossen?

Schließen Sie das Videokabel an den Videoanschluss im Videogerät an. Schließen Sie das entgegengesetzte Ende an den S-Video-Anschluss des Projektors an.



ILM300 - QuickStart



Apresenta!

Se necessário, pressione as teclas de ativação no computador móvel para ver a imagem na tela.*



Como exibir o Guia do Usuário online

Para exibir o *Guia do Usuário* online em vários idiomas, referente ao Projetor iLM300 MicroPortable no CD, proceda da seguinte maneira:

1. Insira o *CD do Guia do Usuário* na unidade de CD-ROM.
2. O CD será iniciado. Vá para a etapa 5. Se o CD não for iniciado, clique em **Iniciar** e, em seguida, clique em **Executar**.
3. Digite **e: \1 aunch. bat**, onde e: é a unidade de CD-ROM.
4. Clique em **OK**. A página do navegador do CD é exibida.
5. Siga as instruções na tela.

Ajuda Adicional

O *Guia do Usuário* do iLM300 inclui instruções abrangentes sobre a configuração e a operação do projetor. Aqui, você encontrará alguns problemas comuns de configuração e a maneira de resolvê-los.

1. Nada aparece na tela.

Certifique-se de ter conectado o cabo de alimentação, de ter removido a tampa da lente e de que o botão liga/desliga na parte superior do projetor foi pressionado.

2. Tudo o que vejo é a tela de inicialização.

Certifique-se de que o cabo do computador esteja conectado entre o computador e o projetor. Tente pressionar as teclas de ativação do computador móvel mais uma vez. Algumas máquinas exigem que as teclas sejam pressionadas duas vezes para ativar a imagem.

Verifique se você está utilizando a combinação correta de teclas de ativação referente a seu computador. O Apêndice C no *Guia do Usuário* online contém uma lista de combinações de teclas para vários computadores móveis.

3. Não há imagem do computador na tela.

O projetor pode não estar sincronizado com o sinal do computador. Pressione o botão Menu no teclado do projetor ou no controle remoto para abrir os menus. No menu Basic, selecione **Reset** para sincronizar as definições do projetor com o computador. Consulte o Capítulo 2 no

Guia do Usuário online para obter mais informações sobre como ajustar as definições da imagem com os menus na tela.

4. A imagem preenche a tela, mas o texto fica impreciso e difícil de ser lido.

Defina a resolução de vídeo do computador móvel para a resolução do projetor, que é de 1024x768. Se a resolução do computador móvel for somente 800x600 ou 640x480, o projetor converterá automaticamente a resolução para 1024x768.

Ajuste o anel de foco e o de zoom para obter uma imagem mais definida.

5. Só consigo ver parte da imagem do computador na tela.

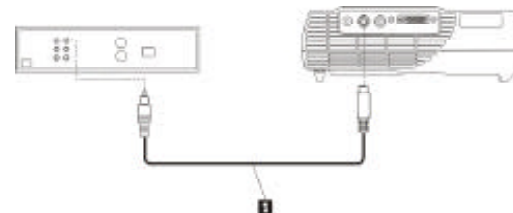
Como no item 4 anterior, defina a resolução do computador correspondente à do projetor. Utilize as teclas de ativação para exibir a imagem projetada.

Utilize a tecla Keystone na parte superior do projetor para enquadrar a imagem.

6. Como conectar o equipamento de vídeo digital ao projetor?

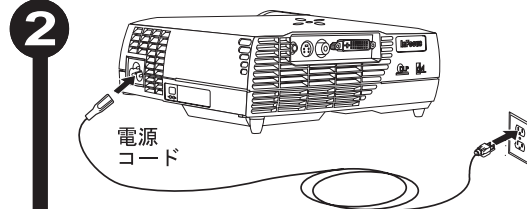
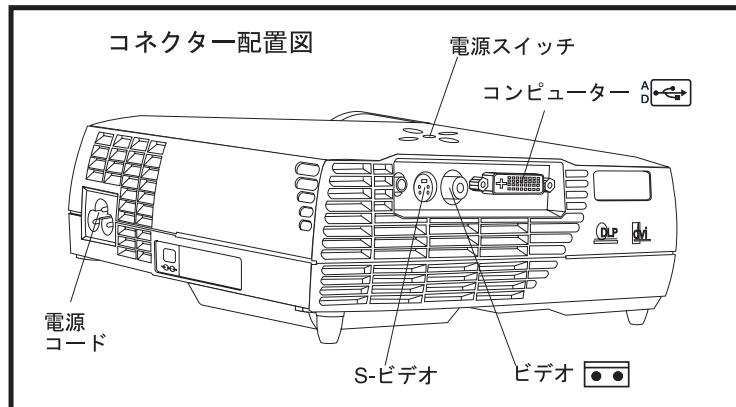
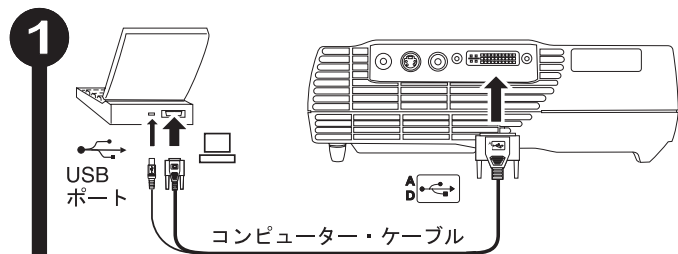
Insira o cabo de vídeo no conector de vídeo, no aparelho.

Conecte a extremidade oposta ao conector S-Vídeo do projetor.

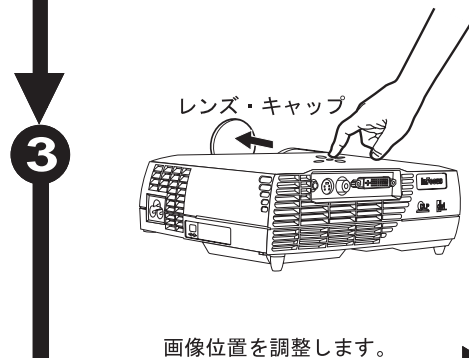


(C) Copyright International Business Machines Corporation 2002. Todos os direitos reservados. Direitos Restritos aos Usuários do Governo dos EUA – Uso, duplicação ou divulgação restrito pelo documento GSA ADP Schedule Contract com a IBM Corp.

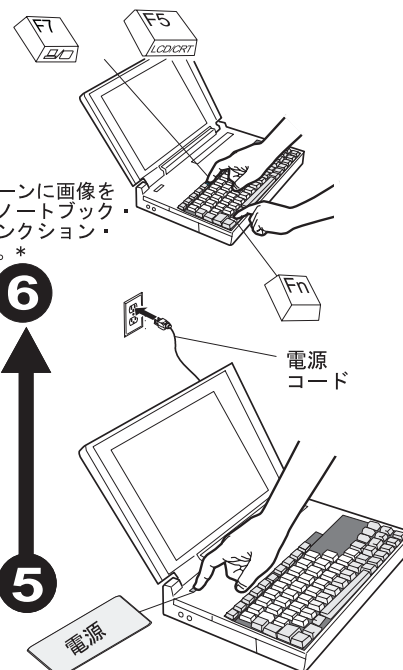
ILM300クイック・スタート



プレゼンテーション!



必要に応じて、スクリーンに画像を映すために、ご使用のノートブック・コンピューターのファンクション・キーを押してください。*



*ご使用のコンピューターによって、キーの組み合わせが異なります。詳しくは、ご使用のコンピューターに付属のマニュアルをご覧ください。

オンライン・ユーザズ・ガイドの表示方法

CDに入っているマルチ・ランゲージのiLM300 マイクロポータブル・プロジェクター II ユーザズ・ガイドを表示するには、次の手順で行います。

1. *User Guide CD*をCD-ROM ドライブに挿入します。
2. CDが起動します。ステップ5に進みます。起動しない場合は、「スタート」→「ファイル名を指定して実行」をクリックします。
3. 「e:\engage.bat」(e は CD-ROM ドライブ)と入力します。
4. 「OK」をクリックします。CDブラウザのページが表示されます。
5. 画面に表示される指示に従います。

追加ヘルプ情報

iLM300 ユーザズ・ガイドには、ご使用のプロジェクターをセットアップしたり、操作したりするための詳しい手順が記載されています。次に、セットアップの際によく起きる問題とその解決策を記述します。

1. スクリーンに何も映らない。

電源コードがつながっていること、レンズ・キャップが外されていること、そしてプロジェクター上部の電源スイッチが入っていることを確認します。

2. スタートアップ画面しか表示されない。

コンピューターとプロジェクターの間のケーブルが接続されていることを確認します。ノートブック・コンピューターのファンクション・キーを再度押してみます。画像を映すには、そのキーを2回押す必要がある場合があります。

ご使用のコンピューターのファンクション・キーの正しい組み合わせを使用していることを確認します。ノートブック・コンピューターのファンクション・キーのリストが、オンライン・ユーザズ・ガイドの『付録 C』に記載されています。

3. スクリーンにコンピューター画面が表示されない。

プロジェクターがコンピューター信号と同期がとれていません。プロジェクターのキーパッドまたはリモコンの Menu (メニュー) ボタンを押して、メニューを開きます。「Basic」メニューから「Reset」を選択し、プロジェクターの設定をコンピューターに同期させます。オンスクリーン・メニューでの画像設定の調整については、オンライン・ユーザズ・ガイドの『第2章』を参照してください。

4. 画像がスクリーンに表示されるが、文字がぼやけて読みづらい。ノートブック・コンピューターの解像度をプロジェクターの解像度の1024x768に合わせます。ご使用のノートブック・コンピューターの解像度が800x600または640x680のみの場合には、プロジェクターが自動的に解像度を1024x768に変換します。

フォーカス・リングとズーム・リングを使用して、くっきりした画像になるように調整します。

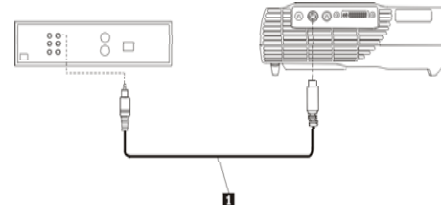
5. コンピューター画面の一部しかスクリーンに映らない。

前述の4.のようにして、コンピューターの解像度をプロジェクターの解像度に合うように設定します。ファンクション・キーを使用して、スクリーンのみへ画像表示をするようにします。

プロジェクター上部の Keystone キーを使用して、画像を整えます。

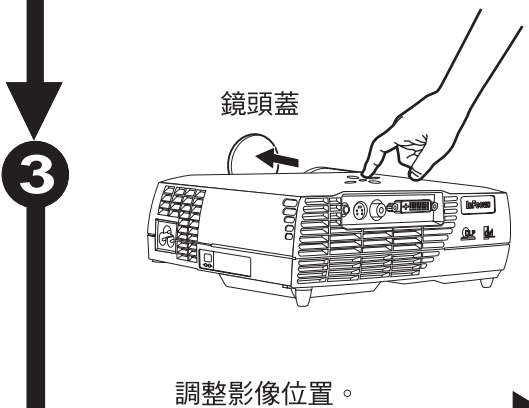
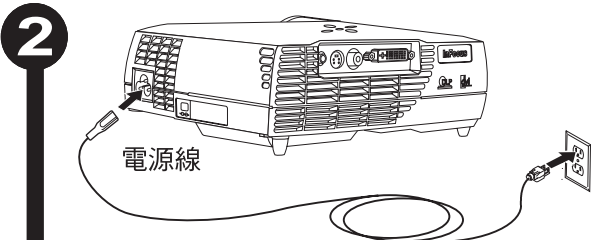
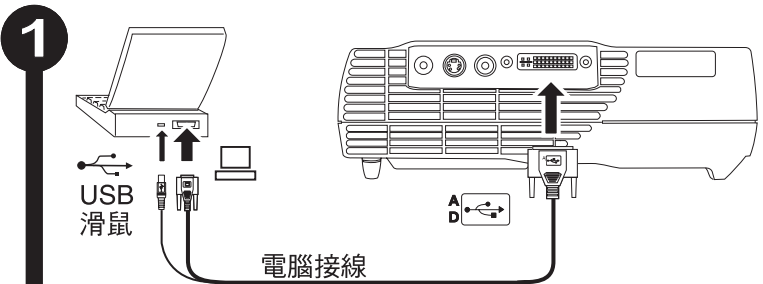
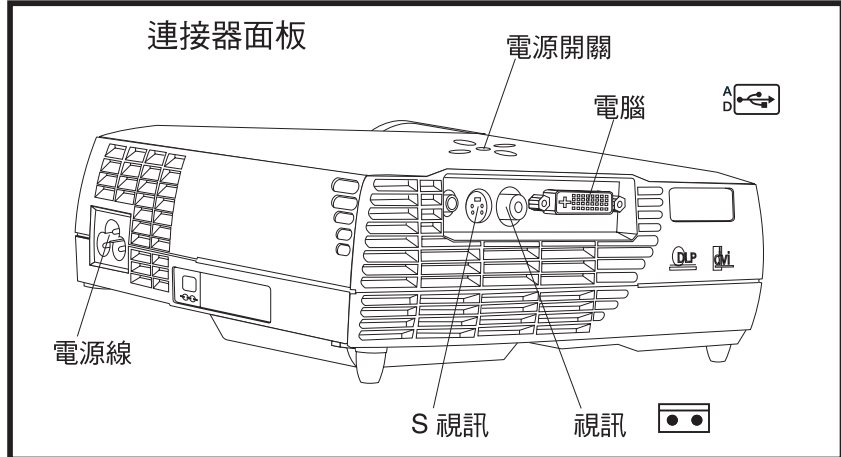
6. プロジェクターにデジタル・ビデオ機器を接続するには、どうすればいいですか？

ビデオ・ケーブルをプレーヤーのビデオ・コネクタに挿入します。ビデオ・ケーブルの反対側をプロジェクターのS-ビデオ・コネクタに接続します。



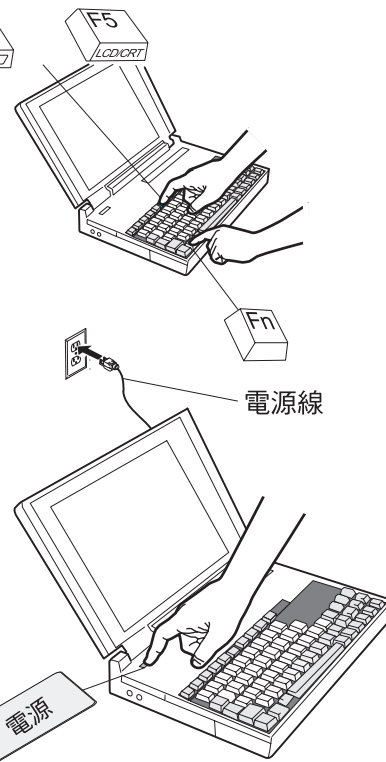
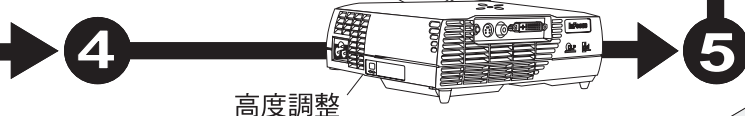
(C) Copyright International Business Machines Corporation 2002. All rights reserved.
US Government Users Restricted Rights – Use, duplication or disclosure restricted by GSA
ADP Schedule Contract with IBM Corp.

ILM300 快速啟動



呈現！

如果需要，請按下您筆記型電腦之顯示切換鍵，可參考螢幕上的影像。*



* 您的電腦可能使用不同的按鍵組合。請檢查您的電腦文件以取得相關資訊。

如何檢視線上使用手冊

若要檢視 CD 中各種語言版本的線上 iLM300 MicroPortable Projector 使用手冊，請遵循下列步驟：

1. 請放入使用手冊光碟於 CD 光碟機中。
2. 光碟將會啟動。請跳至步驟 5。如果光碟並未啟動，請按一下開始，然後按一下執行。
3. 請輸入 e:\engage.bat，e: 為 CD 光碟機。
4. 請按一下確定。將會顯示光碟瀏覽頁。
5. 請遵循畫面中的指示。

其他的說明

iLM300 使用手冊包含安裝和操作的投影機的詳細指示。下列為一些常見的安裝問題和解決方式。

1. 無法顯示畫面。

請確認您已連接電源線，取下鏡頭蓋，並且按下投影機上方的電源按鈕。

2. 只顯示了啟動畫面。

請確認投影機是否已經與電腦連線。然後試著多按幾下筆記型電腦的顯示切換鍵。有些機型需要按下這些鍵兩次才能啟動影像。

請確認您用的是電腦的正確顯示切換鍵組合。線上使用手冊中的附錄 C 包含多種機型之筆記型電腦的按鍵組合清單。

3. 螢幕無法顯示電腦的畫面影像。

投影機可能無法與電腦訊號同步。請按下投影機按鍵面板上的「功能表」按鈕或用遠端控制來開啓這些功能表。從「基本」功能表，選取重設來同步電腦和投影機的設定。請參閱線上使用手冊中的第 2 章，以獲得更多關於使用螢幕功能表調整影像設定的資訊。

4. 影像已顯示於畫面上，但文字模糊且無法閱讀。

請設定筆記型電腦的顯示解析度為 1024x768 的投影機解析度。如果您的筆記型電腦解析度只有 800x600 或 640x480，投影機會自動將解析度轉換為 1024x768。

調整焦點環並縮放環來獲得較清晰的影像。

5. 畫面上只顯示了電腦畫面中的部份影像。

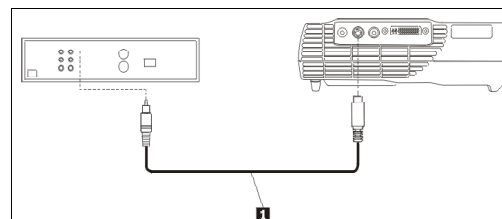
如上述第 4 點，請設定符合投影機解析度的電腦解析度。請使用顯示切換鍵來顯示投影影像。

請使用投影機上方的 Keystone 鍵以調正影像。

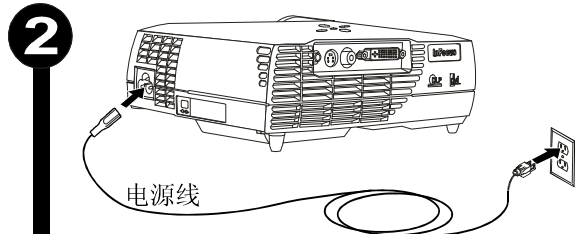
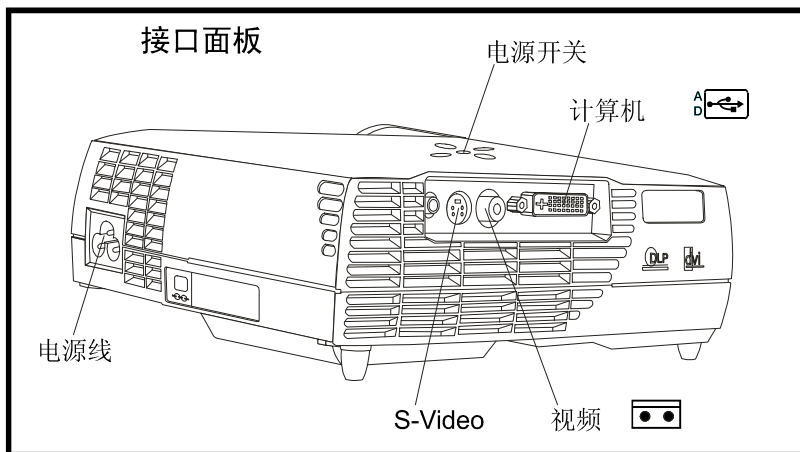
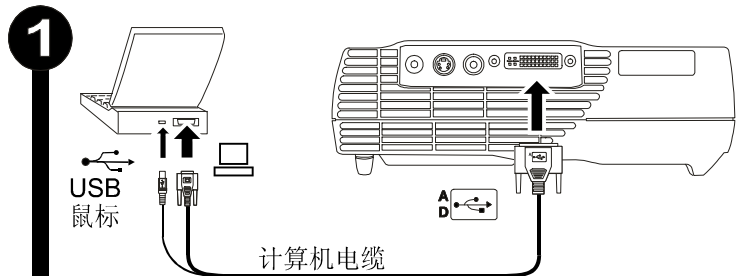
6. 要如何將數位視訊設備連接到投影機？

請將視訊線插入至播放器的視訊接頭。

將另一端連接至投影機的 S 視訊接頭。

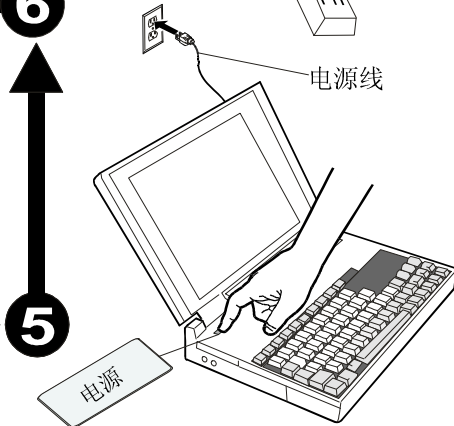
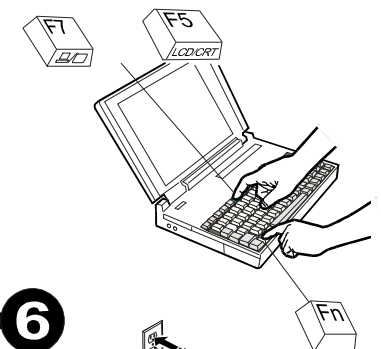
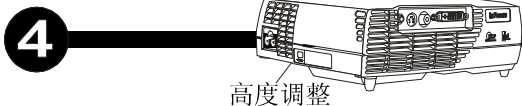
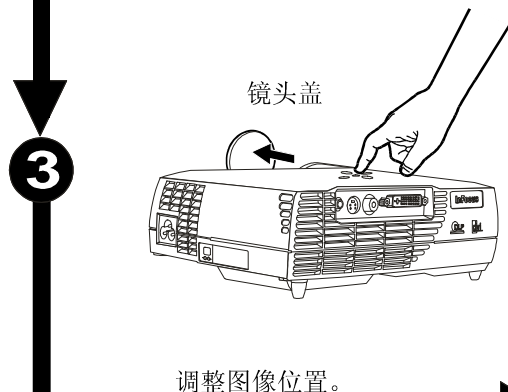


ILM300 快速入门



开始演示!

必要的话, 请按下
移动式计算机上的
激活键以察看屏幕
上的图像。*



*您的计算机使用的键组合可能不同。有关更多信息, 请查看计算机文档。

如何查看联机《用户指南》

要查看 CD 上的联机多语言《iLM300 微型便携式投影仪用户指南》，请执行以下操作：

1. 将“用户指南 CD”插入 CD-ROM 驱动器中。
2. 该 CD 将启动。请转至步骤 5。如果该 CD 不启动，请单击“开始”，然后单击“运行”。
3. 输入 e:\launch.bat，此处 e: 是 CD-ROM 驱动器。
4. 单击“确定”。显示 CD 浏览器页面。
5. 请按屏幕上的指示信息进行操作。

附加帮助

该《iLM300 用户指南》包含有关设置和操作投影仪的详尽指示信息。这里是一些常见的设置问题及其解决方法。

1. 屏幕上不出现任何信息。

请确保连接了电源电缆，卸下了镜头盖，并按下了投影仪顶部的电源按钮。

2. 我只能看见启动屏幕。

请确保计算机和投影仪之间连接了计算机电缆。请尝试多次按下移动式计算机激活键。一些机器要求按这些键两次以激活图像。

请确保正在使用计算机的正确的激活键组合。联机《用户指南》中的『附录 C』包含许多移动式计算机的键组合列表。

3. 屏幕上没有计算机图像。

投影仪可能与计算机信号不同步。请按下投影仪键区或遥控器上的 Menu 按钮来打开菜单。从 Basic 菜单中选择 Reset 使投影仪设置与计算机同步。有关用屏幕上的菜单来调整图像设置的更多信息，请参阅联机《用户指南》的『第 2 章』。

4. 图像填充了屏幕，但是文本模糊且难以阅读。

请将移动式计算机显示分辨率设置为 1024x768 的投影仪分辨率。如果移动式计算机分辨率仅为 800x600 或 640x480，则投影仪会自动将分辨率转换为 1024x768。

调整聚焦环和缩放环以获取更清晰的图像。

5. 我只能在屏幕上看到部分计算机图像。

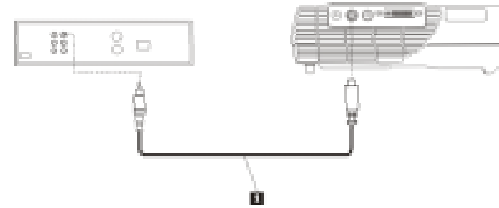
如上第 4. 项所述，将计算机分辨率设置为与投影仪分辨率匹配。请使用激活键来显示投影的图像。

请使用投影仪顶部的 Keystone 键将图像调节成方形。

6. 我如何将数字视频设备连接到投影仪？

将视频电缆插入播放器的视频接口中。

将另一端连接到投影仪 S-Video 接口。



(C) Copyright International Business Machines Corporation 2002. All rights reserved. US Government Users Restricted Rights - Use, duplication or disclosure restricted by GSA ADP Schedule Contract with IBM Corp.

Warranty information

This section contains the warranty period for your product, information about obtaining warranty service and support, and the IBM Statement of Limited Warranty.

Warranty Period

Contact your place of purchase for warranty service information. Some IBM Machines are eligible for on-site warranty service depending on the country or region where service is performed.

Machine - IBM iLM300 MicroPortable Projector

Warranty period - Three years

Machine - IBM iLM300 MicroPortable Projector Lamp Module

Warranty period - Three months

Replacement lamps

During the warranty period, order replacement lamps by calling the IBM HelpCenter. See "Telephone technical support" on the following page. Request Part Number 33L3456.

After the warranty period, order replacement lamps (Part Number 33L3456) from IBM using the World Wide Web. The Web site address is <http://www.pc.ibm.com/us/accessories/projectors/index.html/>.

Service and Support

The following information describes the technical support that is available for your product, during the warranty period or throughout the life of the product. Refer to your IBM Statement of Limited Warranty for a full explanation of IBM warranty terms.

Warranty information on the World Wide Web

The IBM Machine Warranties Web site at http://www.ibm.com/servers/support/machine_warranties/ contains a worldwide overview of the IBM Limited Warranty for IBM Machines, a glossary of terms used in the Statement of Limited Warranty, Frequently Asked Questions (FAQ), and links to Product Support Web pages. The IBM Statement of Limited Warranty is available from this Web site in 29 languages in Portable Document Format (PDF).

Online Technical Support

Online technical support is available during the life of your product. Online assistance can be obtained through the Personal Computing Support Web site at <http://www.ibm.com/pc/support>.

During the warranty period, assistance for replacement or exchange of defective components is available. In addition, if your IBM option is installed in an IBM computer, you might be entitled to service at your location. Your technical support representative can help you determine the best alternative.

Telephone technical support

Installation and configuration support through the IBM HelpCenter(R) will be withdrawn or made available for a fee, at IBM's discretion, 90 days after the option has been withdrawn from marketing. Additional support offerings, including step-by-step installation assistance, are available for a nominal fee.

To assist the technical support representative, have available as much of the following information as possible:

- Option name
- Option number
- Proof of purchase
- Computer manufacturer, model, serial number (if IBM), and manual
- Exact wording of the error message (if any)
- Description of the problem
- Hardware and software configuration information for your system

If possible, be at your computer. Your technical support representative might want to walk you through the problem during the call.

For the support telephone number and support hours by country, refer to the following table. If the number for your country or region is not listed, contact your IBM reseller or IBM marketing representative. Response time may vary depending on the number and nature of the calls received.

Support 24 hours a day, 7 days a week	
Canada (all other)	1-800-565-3344
U.S.A. and Puerto Rico	1-800-772-2227
All other countries and regions	Go to http://www.ibm.com/pc/support/ , and click Support Phone List .

IBM Statement of Limited Warranty Z125-4753-06 8/2000

Part 1 - General Terms

This Statement of Limited Warranty includes Part 1 - General Terms and Part 2 - Country-unique Terms. The terms of Part 2 replace or modify those of Part 1. The warranties provided by IBM in this Statement of Limited Warranty apply only to Machines you purchase for your use, and not for resale, from IBM or your reseller. The term “Machine” means an IBM machine, its features, conversions, upgrades, elements, or accessories, or any combination of them. The term “Machine” does not include any software programs, whether pre-loaded with the Machine, installed subsequently or otherwise. Unless IBM specifies otherwise, the following warranties apply only in the country where you acquire the Machine. Nothing in this Statement of Limited Warranty affects any statutory rights of consumers that cannot be waived or limited by contract. If you have any questions, contact IBM or your reseller.

The IBM Warranty for Machines: IBM warrants that each Machine 1) is free from defects in materials and workmanship and 2) conforms to IBM's Official Published Specifications (“Specifications”). The warranty period for a Machine is a specified, fixed period commencing on its Date of Installation. The date on your sales receipt is the Date of Installation unless IBM or your reseller informs you otherwise.

If a Machine does not function as warranted during the warranty period, and IBM or your reseller are unable to either 1) make it do so or 2) replace it with one that is at least functionally equivalent, you may return it to your place of purchase and your money will be refunded.

Extent of Warranty: The warranty does not cover the repair or exchange of a Machine resulting from misuse, accident, modification, unsuitable physical or operating environment, improper maintenance by you, or failure caused by a product for which IBM is not responsible. The warranty is voided by removal or alteration of Machine or parts identification labels.

THESE WARRANTIES ARE YOUR EXCLUSIVE WARRANTIES AND REPLACE ALL OTHER WARRANTIES OR CONDITIONS, EXPRESS OR IMPLIED, INCLUDING, BUT NOT LIMITED TO, THE IMPLIED WARRANTIES OR CONDITIONS OF MERCHANTABILITY AND FITNESS FOR A PARTICULAR PURPOSE. THESE WARRANTIES GIVE YOU SPECIFIC LEGAL RIGHTS AND YOU MAY ALSO HAVE OTHER RIGHTS WHICH VARY FROM JURISDICTION TO JURISDICTION. SOME JURISDICTIONS DO NOT ALLOW THE EXCLUSION OR LIMITATION OF EXPRESS OR IMPLIED WARRANTIES, SO THE ABOVE EXCLUSION OR LIMITATION MAY NOT APPLY TO YOU. IN THAT EVENT, SUCH WARRANTIES ARE LIMITED IN DURATION TO THE WARRANTY PERIOD. NO WARRANTIES APPLY AFTER THAT PERIOD.

Items Not Covered by Warranty: IBM does not warrant uninterrupted or error-free operation of a Machine.

Any technical or other support provided for a Machine under warranty, such as assistance via telephone with “how-to” questions and those regarding Machine set-up and installation, will be provided **WITHOUT WARRANTIES OF ANY KIND.**

Warranty Service: To obtain warranty service for a Machine, contact IBM or your reseller. If you do not register your Machine with IBM, you may be required to present proof of purchase.

During the warranty period, IBM or your reseller, if approved by IBM to provide warranty service, provides without charge certain types of repair and exchange service to keep Machines in, or restore them to, conformance with their Specifications. IBM or your reseller will inform you of the available types of service for a Machine based on its country of installation. At its discretion, IBM or your reseller will 1) either repair or exchange the failing Machine and 2) provide the service either at your location or a service center. IBM or your reseller will also manage and install selected engineering changes that apply to the Machine.

Some parts of IBM Machines are designated as Customer Replaceable Units (called “CRUs”), e.g., keyboards, memory, or hard disk drives. IBM ships CRUs to you for replacement by you. You must return all defective CRUs to IBM within 30 days of your receipt of the replacement CRU. You are responsible for downloading designated Machine Code and Licensed Internal Code updates from an IBM Internet Web site or from other electronic media, and following the instructions that IBM provides.

When warranty service involves the exchange of a Machine or part, the item IBM or your reseller replaces becomes its property and the replacement becomes yours. You represent that all removed items are genuine and unaltered. The replacement may not be new, but will be in good working order and at least functionally equivalent to the item replaced. The replacement assumes the warranty service status of the replaced item. Many features, conversions, or upgrades involve the removal of parts and their return to IBM. A part that replaces a removed part will assume the warranty service status of the removed part.

Before IBM or your reseller exchanges a Machine or part, you agree to remove all features, parts, options, alterations, and attachments not under warranty service.

You also agree to

- ensure that the Machine is free of any legal obligations or restrictions that prevent its exchange;

- obtain authorization from the owner to have IBM or your reseller service a Machine that you do not own; and

- where applicable, before service is provided:

 - follow the problem determination, problem analysis, and service request procedures that IBM or your reseller provides; secure all programs, data, and funds contained in a Machine;

 - provide IBM or your reseller with sufficient, free, and safe access to your facilities to permit them to fulfill their obligations; and

 - inform IBM or your reseller of changes in a Machine's location.

IBM is responsible for loss of, or damage to, your Machine while it is 1) in IBM's possession or 2) in transit in those cases where IBM is responsible for the transportation charges.

Neither IBM nor your reseller is responsible for any of your confidential, proprietary or personal information contained in a Machine which you return to IBM or your reseller for any reason. You should remove all such information from the Machine prior to its return.

Limitation of Liability: Circumstances may arise where, because of a default on IBM's part or other liability, you are entitled to recover damages from IBM. In each such instance, regardless of the basis on which you are entitled to claim damages from IBM (including fundamental breach, negligence, misrepresentation, or other contract or tort claim), except for any liability that cannot be waived or limited by applicable laws, IBM is liable for no more than

damages for bodily injury (including death) and damage to real property and tangible personal property; and

the amount of any other actual direct damages, up to the charges (if recurring, 12 months' charges apply) for the Machine that is subject of the claim. For purposes of this item, the term "Machine" includes Machine Code and Licensed Internal Code.

This limit also applies to IBM's suppliers and your reseller. It is the maximum for which IBM, its suppliers, and your reseller are collectively responsible.

UNDER NO CIRCUMSTANCES IS IBM LIABLE FOR ANY OF THE FOLLOWING: 1) THIRD-PARTY CLAIMS AGAINST YOU FOR DAMAGES (OTHER THAN THOSE UNDER THE FIRST ITEM LISTED ABOVE); 2) LOSS OF, OR DAMAGE TO, YOUR RECORDS OR DATA; OR 3) SPECIAL, INCIDENTAL, OR INDIRECT DAMAGES OR FOR ANY ECONOMIC CONSEQUENTIAL DAMAGES, LOST PROFITS OR LOST SAVINGS, EVEN IF IBM, ITS SUPPLIERS OR YOUR RESELLER IS INFORMED OF THEIR POSSIBILITY. SOME JURISDICTIONS DO NOT ALLOW THE EXCLUSION OR LIMITATION OF INCIDENTAL OR CONSEQUENTIAL DAMAGES, SO THE ABOVE LIMITATION OR EXCLUSION MAY NOT APPLY TO YOU.

Governing Law: Both you and IBM consent to the application of the laws of the country in which you acquired the Machine to govern, interpret, and enforce all of your and IBM's rights, duties, and obligations arising from, or relating in any manner to, the subject matter of this Agreement, without regard to conflict of law principles.

Part 2 - Country-unique Terms

AMERICAS

BRAZIL

Governing Law: *The following is added after the first sentence:*

Any litigation arising from this Agreement will be settled exclusively by the court of Rio de Janeiro.

NORTH AMERICA

Warranty Service: *The following is added to this Section:*

To obtain warranty service from IBM in Canada or the United States, call 1-800-IBM-SERV (426-7378).

CANADA

Governing Law: *The following replaces “laws of the country in which you acquired the Machine” in the first sentence:*

laws in the Province of Ontario.

UNITED STATES

Governing Law: *The following replaces “laws of the country in which you acquired the Machine” in the first sentence:*

laws of the State of New York.

ASIA PACIFIC

AUSTRALIA

The IBM Warranty for Machines: *The following paragraph is added to this Section:*

The warranties specified in this Section are in addition to any rights you may have under the Trade Practices Act 1974 or other similar legislation and are only limited to the extent permitted by the applicable legislation.

Limitation of Liability: *The following is added to this Section:*

Where IBM is in breach of a condition or warranty implied by the Trade Practices Act 1974 or other similar legislation, IBM's liability is limited to the repair or replacement of the goods or the supply of equivalent goods. Where that condition or warranty relates to right to sell, quiet possession or clear title, or the goods are of a kind ordinarily acquired for personal, domestic or household use or consumption, then none of the limitations in this paragraph apply.

Governing Law: *The following replaces “laws of the country in which you acquired the Machine” in the first sentence:*

laws of the State or Territory.

CAMBODIA, LAOS, AND VIETNAM

Governing Law: *The following replaces “laws of the country in which you acquired the Machine” in the first sentence:*

laws of the State of New York.

The following is added to this Section:

Disputes and differences arising out of or in connection with this Agreement shall be finally settled by arbitration which shall be held in Singapore in accordance with the rules of the International Chamber of Commerce (ICC). The arbitrator or arbitrators designated in conformity with those rules shall have the power to rule on their own competence and on the validity of the Agreement to submit to arbitration. The arbitration award shall be final and binding for the parties without appeal and the arbitral award shall be in writing and set forth the findings of fact and the conclusions of law.

All proceedings shall be conducted, including all documents presented in such proceedings, in the English language. The number of arbitrators shall be three, with each side to the dispute being entitled to appoint one arbitrator.

The two arbitrators appointed by the parties shall appoint a third arbitrator before proceeding upon the reference. The third arbitrator shall act as chairman of the proceedings. Vacancies in the post of chairman shall be filled by the president of the ICC. Other vacancies shall be filled by the respective nominating party. Proceedings shall continue from the stage they were at when the vacancy occurred.

If one of the parties refuses or otherwise fails to appoint an arbitrator within 30 days of the date the other party appoints its, the first appointed arbitrator shall be the sole arbitrator, provided that the arbitrator was validly and properly appointed.

The English language version of this Agreement prevails over any other language version.

HONG KONG AND MACAU

Governing Law: *The following replaces “laws of the country in which you acquired the Machine” in the first sentence:*
laws of Hong Kong Special Administrative Region.

INDIA

Limitation of Liability: *The following replaces items 1 and 2 of this Section:*

liability for bodily injury (including death) or damage to real property and tangible personal property will be limited to that caused by IBM's negligence;
as to any other actual damage arising in any situation involving nonperformance by IBM pursuant to, or in any way related to the subject of this Statement of Limited Warranty, IBM's liability will be limited to the charge paid by you for the individual Machine that is the subject of the claim.

JAPAN

Governing Law: *The following sentence is added to this Section:*

Any doubts concerning this Agreement will be initially resolved between us in good faith and in accordance with the principle of mutual trust.

NEW ZEALAND

The IBM Warranty for Machines: *The following paragraph is added to this Section:*

The warranties specified in this Section are in addition to any rights you may have under the Consumer Guarantees Act 1993 or other legislation which cannot be excluded or limited. The Consumer Guarantees Act 1993 will not apply in respect of any goods which IBM provides, if you require the goods for the purposes of a business as defined in that Act.

Limitation of Liability: *The following is added to this Section:*

Where Machines are not acquired for the purposes of a business as defined in the Consumer Guarantees Act 1993, the limitations in this Section are subject to the limitations in that Act.

PEOPLE'S REPUBLIC OF CHINA (PRC)

Governing Law: *The following replaces this Section:*

Both you and IBM consent to the application of the laws of the State of New York (except when local law requires otherwise) to govern, interpret, and enforce all your and IBM's rights, duties, and obligations arising from, or relating in any manner to, the subject matter of this Agreement, without regard to conflict of law principles.

Any disputes arising from or in connection with this Agreement will first be resolved by friendly negotiations, failing which either of us has the right to submit the dispute to the China International Economic and Trade Arbitration Commission in Beijing, the PRC, for arbitration in accordance with its arbitration rules in force at the time. The arbitration tribunal will consist of three arbitrators. The language to be used therein will be English and Chinese. An arbitral award will be final and binding on all the parties, and will be enforceable under the Convention on the Recognition and Enforcement of Foreign Arbitral Awards (1958).

The arbitration fee will be borne by the losing party unless otherwise determined by the arbitral award.

During the course of arbitration, this Agreement will continue to be performed except for the part which the parties are disputing and which is undergoing arbitration.

EUROPE, MIDDLE EAST, AFRICA (EMEA)

THE FOLLOWING TERMS APPLY TO ALL EMEA COUNTRIES:

The terms of this Statement of Limited Warranty apply to Machines purchased from IBM or an IBM reseller.

Warranty Service:

If you purchase an IBM Machine in Austria, Belgium, Denmark, Estonia, Finland, France, Germany, Greece, Iceland, Ireland, Italy, Latvia, Lithuania, Luxembourg, Netherlands, Norway, Portugal, Spain, Sweden, Switzerland or United Kingdom, you may obtain warranty service for that Machine in any of those countries from either (1) an IBM reseller approved to perform warranty service or (2) from IBM. If you purchase an IBM Personal Computer Machine in Albania, Armenia, Belarus, Bosnia and Herzegovina, Bulgaria, Croatia, Czech Republic, Georgia, Hungary, Kazakhstan, Kirghizia, Federal Republic of Yugoslavia, Former Yugoslav Republic of Macedonia (FYROM), Moldova, Poland, Romania, Russia, Slovak Republic, Slovenia, or Ukraine, you may obtain warranty service for that Machine in any of those countries from either (1) an IBM reseller approved to perform warranty service or (2) from IBM.

If you purchase an IBM Machine in a Middle Eastern or African country, you may obtain warranty service for that Machine from the IBM entity within the country of purchase, if that IBM entity provides warranty service in that country, or from an IBM reseller, approved by IBM to perform warranty service on that Machine in that country. Warranty service in Africa is available within 50 kilometers of an IBM authorized service provider. You are responsible for transportation costs for Machines located outside 50 kilometers of an IBM authorized service provider.

Governing Law:

The applicable laws that govern, interpret and enforce rights, duties, and obligations of each of us arising from, or relating in any manner to, the subject matter of this Statement, without regard to conflict of laws principles, as well as Country-unique terms and competent court for this Statement are those of the country in which the warranty service is being provided, except that in 1) Albania, Bosnia-Herzegovina, Bulgaria, Croatia, Hungary, Former Yugoslav Republic of Macedonia, Romania, Slovakia, Slovenia, Armenia, Azerbaijan, Belarus, Georgia, Kazakhstan, Kyrgyzstan, Moldova, Russia, Tajikistan, Turkmenistan, Ukraine, and Uzbekistan, the laws of Austria apply; 2) Estonia, Latvia, and Lithuania, the laws of Finland apply; 3) Algeria, Benin, Burkina Faso, Cameroon, Cape Verde, Central African Republic, Chad, Congo, Djibouti, Democratic Republic of Congo, Equatorial Guinea, France, Gabon, Gambia, Guinea, Guinea-Bissau, Ivory Coast, Lebanon, Mali, Mauritania, Morocco, Niger, Senegal, Togo, and Tunisia, this Agreement will be construed and the legal relations between the parties will be determined in accordance with the French laws and all disputes arising out of this Agreement or related to its violation or execution, including summary proceedings, will be settled exclusively by the Commercial Court of Paris; 4) Angola, Bahrain, Botswana, Burundi, Egypt, Eritrea, Ethiopia, Ghana, Jordan, Kenya, Kuwait, Liberia, Malawi, Malta, Mozambique, Nigeria, Oman, Pakistan, Qatar, Rwanda, Sao Tome, Saudi Arabia, Sierra Leone, Somalia, Tanzania, Uganda, United Arab Emirates, United Kingdom, West Bank/Gaza, Yemen, Zambia, and Zimbabwe, this Agreement will be governed by English Law and disputes relating to it will be submitted to the exclusive jurisdiction of the English courts; and 5) in Greece, Israel, Italy, Portugal, and Spain any legal claim arising out of this Statement will be brought before, and finally settled by, the competent court of Athens, Tel Aviv, Milan, Lisbon, and Madrid, respectively.

THE FOLLOWING TERMS APPLY TO THE COUNTRY SPECIFIED:

AUSTRIA AND GERMANY

The IBM Warranty for Machines: *The following replaces the first sentence of the first paragraph of this Section:*

The warranty for an IBM Machine covers the functionality of the Machine for its normal use and the Machine's conformity to its Specifications.

The following paragraphs are added to this Section:

The minimum warranty period for Machines is six months. In case IBM or your reseller is unable to repair an IBM Machine, you can alternatively ask for a partial refund as far as justified by the reduced value of the unrepaired Machine or ask for a cancellation of the respective agreement for such Machine and get your money refunded.

Extent of Warranty: *The second paragraph does not apply.*

Warranty Service: *The following is added to this Section:*

During the warranty period, transportation for delivery of the failing Machine to IBM will be at IBM's expense.

Limitation of Liability: *The following paragraph is added to this Section:*

The limitations and exclusions specified in the Statement of Limited Warranty will not apply to damages caused by IBM with fraud or gross negligence and for express warranty.

The following sentence is added to the end of item 2:

IBM's liability under this item is limited to the violation of essential contractual terms in cases of ordinary negligence.

EGYPT

Limitation of Liability: *The following replaces item 2 in this Section:*

as to any other actual direct damages, IBM's liability will be limited to the total amount you paid for the Machine that is the subject of the claim. For purposes of this item, the term "Machine" includes Machine Code and Licensed Internal Code.

Applicability of suppliers and resellers (unchanged).

FRANCE

Limitation of Liability: *The following replaces the second sentence of the first paragraph of this Section:*

In such instances, regardless of the basis on which you are entitled to claim damages from IBM, IBM is liable for no more than: *(items 1 and 2 unchanged).*

IRELAND

Extent of Warranty: *The following is added to this Section:*

Except as expressly provided in these terms and conditions, all statutory conditions, including all warranties implied, but without prejudice to the generality of the foregoing all warranties implied by the Sale of Goods Act 1893 or the Sale of Goods and Supply of Services Act 1980 are hereby excluded.

Limitation of Liability: *The following replaces items one and two of the first paragraph of this Section:*

1. death or personal injury or physical damage to your real property solely caused by IBM's negligence; and
2. the amount of any other actual direct damages, up to 125 percent of the charges (if recurring, the 12 months' charges apply) for the Machine that is the subject of the claim or which otherwise gives rise to the claim.

Applicability of suppliers and resellers (unchanged).

The following paragraph is added at the end of this Section:

IBM's entire liability and your sole remedy, whether in contract or in tort, in respect of any default shall be limited to damages.

ITALY

Limitation of Liability: *The following replaces the second sentence in the first paragraph:*

In each such instance unless otherwise provided by mandatory law, IBM is liable for no more than:

1. *(unchanged)*
2. as to any other actual damage arising in all situations involving nonperformance by IBM pursuant to, or in any way related to the subject matter of this Statement of Warranty, IBM's liability, will be limited to the total amount you paid for the Machine that is the subject of the claim.

Applicability of suppliers and resellers (unchanged).

The following replaces the third paragraph of this Section:

Unless otherwise provided by mandatory law, IBM and your reseller are not liable for any of the following: *(items 1 and 2 unchanged)* 3) indirect damages, even if IBM or your reseller is informed of their possibility.

SOUTH AFRICA, NAMIBIA, BOTSWANA, LESOTHO AND SWAZILAND

Limitation of Liability: *The following is added to this Section:*

IBM's entire liability to you for actual damages arising in all situations involving nonperformance by IBM in respect of the subject matter of this Statement of Warranty will be limited to the charge paid by you for the individual Machine that is the subject of your claim from IBM.

UNITED KINGDOM

Limitation of Liability: *The following replaces items 1 and 2 of the first paragraph of this Section:*

death or personal injury or physical damage to your real property solely caused by IBM's negligence;

the amount of any other actual direct damages or loss, up to 125 percent of the charges (if recurring, the 12 months' charges apply) for the Machine that is the subject of the claim or which otherwise gives rise to the claim;

The following item is added to this paragraph:

3. breach of IBM's obligations implied by Section 12 of the Sale of Goods Act 1979 or Section 2 of the Supply of Goods and Services Act 1982.

Applicability of suppliers and resellers (unchanged).

The following is added to the end of this Section:

IBM's entire liability and your sole remedy, whether in contract or in tort, in respect of any default shall be limited to damages.

Trademarks

The following terms are trademarks of International Business Machines Corporation in the United States, other countries, or both:

IBM

HelpCenter

Other company, product, or service names may be the trademarks or service marks of others.



31P8413

Free Manuals Download Website

<http://myh66.com>

<http://usermanuals.us>

<http://www.somanuals.com>

<http://www.4manuals.cc>

<http://www.manual-lib.com>

<http://www.404manual.com>

<http://www.luxmanual.com>

<http://aubethermostatmanual.com>

Golf course search by state

<http://golfingnear.com>

Email search by domain

<http://emailbydomain.com>

Auto manuals search

<http://auto.somanuals.com>

TV manuals search

<http://tv.somanuals.com>