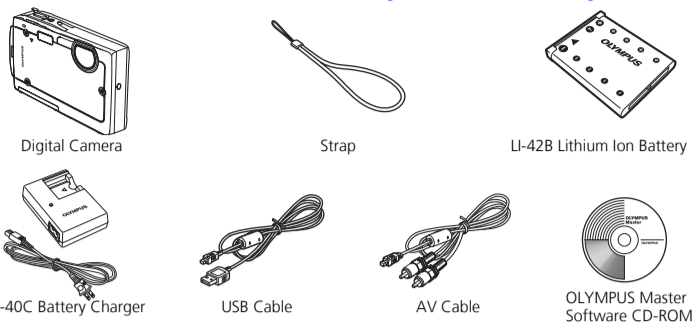


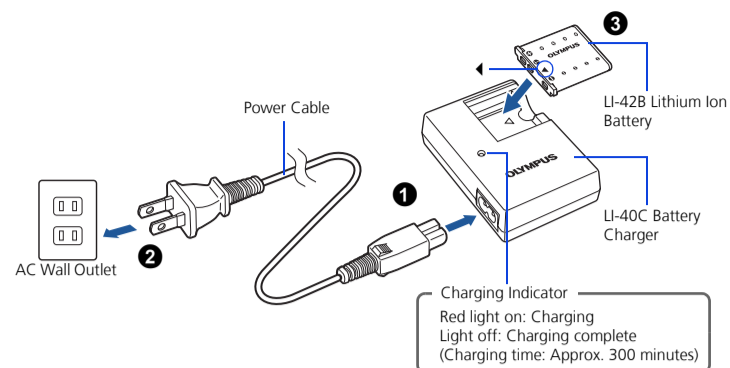
BEFORE YOU BEGIN

Gather these items (box contents)



Items not shown: Advanced Manual (CD-ROM), Basic Manual, warranty card.
Contents may vary depending on purchase location.

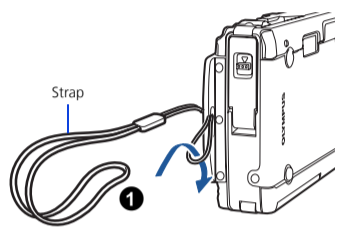
Charge the battery (recommended*)



*Battery comes partially charged.

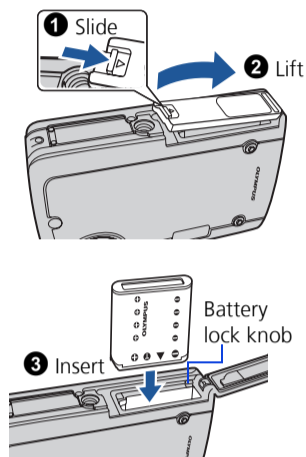
1 GET STARTED

a. Attach the strap



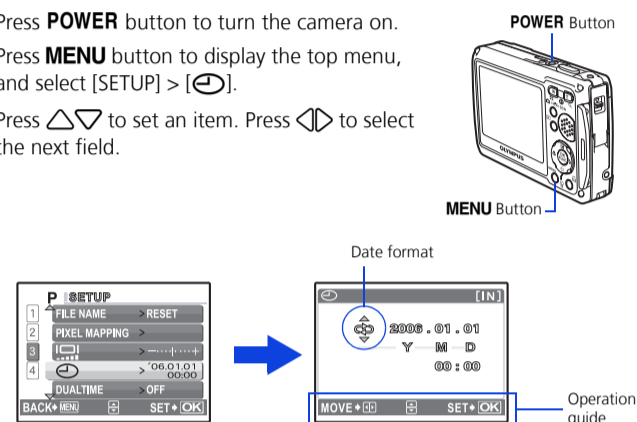
- Pull the strap tight so that it does not come loose.

b. Insert the battery



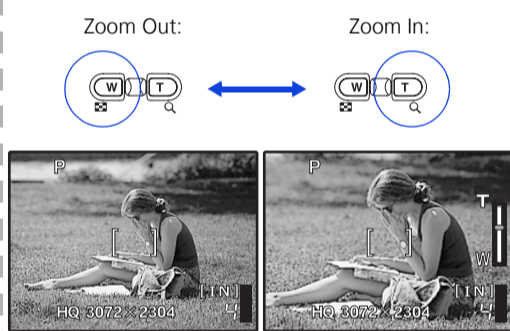
c. Set the date and time

- 1 Press **POWER** button to turn the camera on.
- 2 Press **MENU** button to display the top menu, and select [SETUP] > [CLOCK].
- 3 Press Δ / ∇ to set an item. Press \leftarrow / \rightarrow to select the next field.



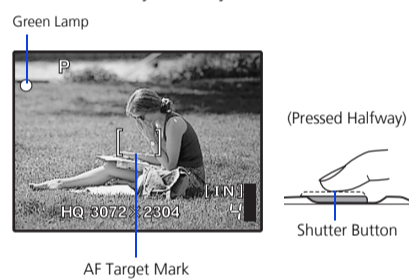
2 TAKE A PICTURE

a. Zoom



b. Focus

- 1 Using the monitor, place the AF target mark over your subject.

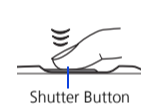


- 2 Press and hold the shutter button halfway to lock the focus.
 - The green lamp indicates the focus is locked.

c. Take the picture

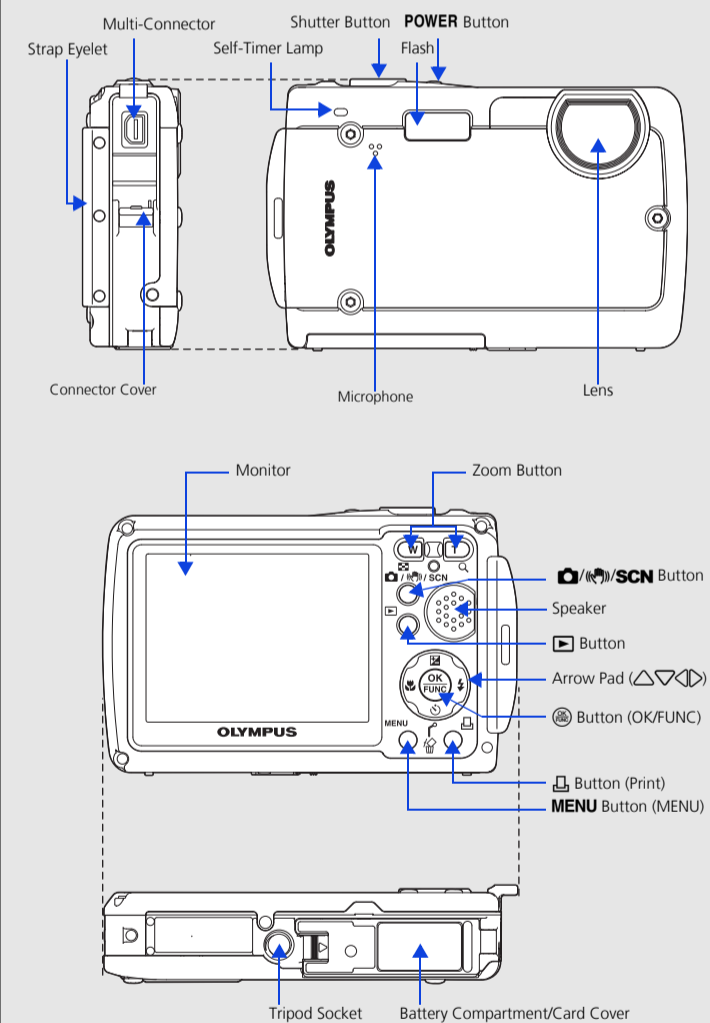
- 1 Press the shutter button completely to take the picture.

(Pressed Completely)



- Pictures are recorded in the internal memory.
- Pictures can also be recorded to an optional xD-Picture Card (It is called just "card" in the attached instruction manual.)

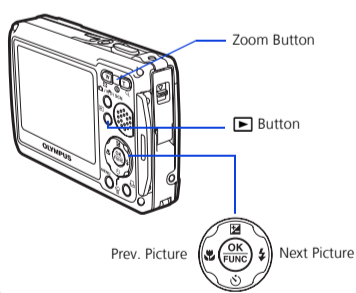
CAMERA DIAGRAM



3 REVIEW OR ERASE A PICTURE

a. Select the playback mode

- 1 Press the \triangleright button.
- The last picture taken will be displayed.

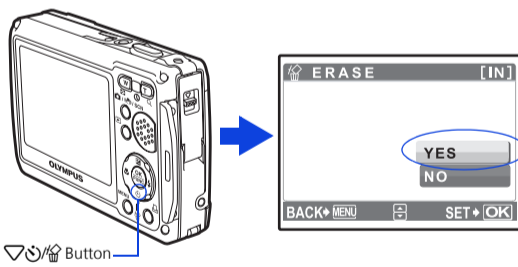


b. Take a closer look

- Press T or W to zoom in or out.
- Press \odot to return to the original size.
- Press Δ / ∇ or \leftarrow / \rightarrow to scroll around.



c. To erase a picture



- 1 Display the picture you want to erase.
 - Select the single-frame playback. A single image cannot be erased while the close-up playback/index playback is operated.
- 2 Press the ∇ / \triangleright button.
- 3 Select [YES], and press \odot .
 - The picture is permanently erased.

4 TRANSFER IMAGES

a. Install the software

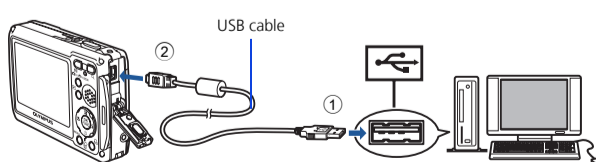
- 1 Insert the OLYMPUS Master CD-ROM.
- 2 **Windows:** Click the "OLYMPUS Master" button.
Macintosh: Double-click the "Installer" icon.
- 3 Simply follow the on-screen instructions.



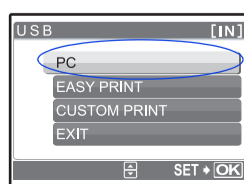
- Remember to register your camera when you install OLYMPUS Master or visit: www.olympusamerica.com/prodreg

b. Connect the camera to the computer

- 1 Connect the camera and computer using the USB cable (included).
- The monitor will turn on automatically.



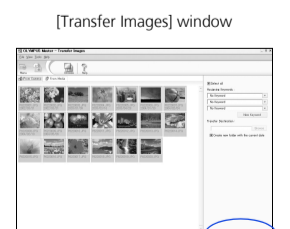
- 2 Select [PC] on the monitor, and press \odot .



- Your PC will now recognize your camera as a removable storage drive.

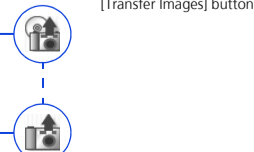
c. Transfer images to the computer

- 1 With the camera now connected, open OLYMPUS Master.
 - The [Transfer Images] window is displayed.
- 2 Select the images you want to transfer, and click the [Transfer Images] button.



If the [Transfer Images] window is not displayed automatically:

- a. Click the "Transfer Images" icon on the OLYMPUS Master main menu.
- b. Click the "From Camera" icon.



Free Manuals Download Website

<http://myh66.com>

<http://usermanuals.us>

<http://www.somanuals.com>

<http://www.4manuals.cc>

<http://www.manual-lib.com>

<http://www.404manual.com>

<http://www.luxmanual.com>

<http://aubethermostatmanual.com>

Golf course search by state

<http://golfingnear.com>

Email search by domain

<http://emailbydomain.com>

Auto manuals search

<http://auto.somanuals.com>

TV manuals search

<http://tv.somanuals.com>