



OfficeConnect® Dual Speed Hub 16

User Guide (3C16751A)

3Com Corporation ■ 5400 Bayfront Plaza ■ Santa Clara, California ■ 95052-8145

Copyright © 1999, 3Com Technologies. All rights reserved.

No part of this documentation may be reproduced in any form or by any means or used to make any derivative work (such as translation, transformation, or adaptation) without written permission from 3Com Technologies.

3Com Technologies reserves the right to revise this documentation and to make changes in content from time to time without obligation on the part of 3Com Technologies to provide notification of such revision or change.

3Com Technologies provides this documentation without warranty, term, or condition of any kind, either implied or expressed, including, but not limited to, the implied warranties, terms or conditions of merchantability, satisfactory quality, and fitness for a particular purpose. 3Com may make improvements or changes in the product(s) and/or the program(s) described in this documentation at any time.

If there is any software on removable media described in this documentation, it is furnished under a license agreement included with the product as a separate document, in the hard copy documentation, or on the removable media in a directory file named LICENSE.TXT or !LICENSE.TXT. If you are unable to locate a copy, please contact 3Com and a copy will be provided to you.

UNITED STATES GOVERNMENT LEGEND

If you are a United States government agency, then this documentation and the software described herein are provided to you subject to the following:

All technical data and computer software are commercial in nature and developed solely at private expense. Software is delivered as "Commercial Computer Software" as defined in DFARS 252.227-7014 (June 1995) or as a "commercial item" as defined in FAR 2.101(a) and as such is provided with only such rights as are provided in 3Com's standard commercial license for the Software. Technical data is provided with limited rights only as provided in DFAR 252.227-7015 (Nov 1995) or FAR 52.227-14 (June 1987), whichever is applicable. You agree not to remove or deface any portion of any legend provided on any licensed program or documentation contained in, or delivered to you in conjunction with, this User Guide.

Unless otherwise indicated, 3Com registered trademarks are registered in the United States and may or may not be registered in other countries.

3Com, the 3Com logo and OfficeConnect are registered trademarks of 3Com Corporation.

Microsoft, MS-DOS, Windows, and Windows NT are registered trademarks of Microsoft Corporation. Novell and NetWare are registered trademarks of Novell, Inc.

All other company and product names may be trademarks of the respective companies with which they are associated.

Year 2000 Compliance: For information on Year 2000 compliance and 3Com products, visit the 3Com Year 2000 Web page:

<http://www.3com.com/products/yr2000.html>

Environmental Statement: Please recycle this user guide after use.

Please e-mail any comments about this document to 3Com at:

pddtechpubs_comments@3com.com. Please include the document title (OfficeConnect Dual Speed Hub 16 User Guide), part number (DUA1675-1AAA02) and, if appropriate, the page number.

Introduction 5

Creating your Network 6

Dual Speed Hub 16—Front 6

Dual Speed Hub 16—Rear 7

Before You Start 8

Workstation Connections 8

Twisted Pair (TP) Cables 8

Hub Connections 8

Stacking the Units Together 9

The Rubber Feet 9

The Stacking Clip 9

Positioning Your Hub 10

Securing Your Hub 10

Connecting Workstations and Other Equipment to Your Hub 11

Connecting Another OfficeConnect Hub 11

Fast Ethernet (100Mbps) Configuration Rules 11

Ethernet (10Mbps) Configuration Rules 12

Making the Connection to Another Hub 13

Checking Hub Connections 13

Spot Checks 13

Problem Solving 14

Networking Terminology 16

Dimensions and Standards 17

Dimensions and Operating Conditions 17

Standards 17

Environmental Statements 18

End Of Life Statement 18

Regulated Materials Statement 18

Environmental Statement about the Documentation 18

Environmental Statement about the Product Packaging 18

Important Safety Information 19

Wichtige Sicherheitshinweise 20

Consignes importantes de sécurité 21

Technical Support 22

Online Technical Services 22

World Wide Web Site 22

3Com Knowledgebase Web Services 22

Support from Your Network Supplier 23

Support from 3Com 23

Returning Products for Repair 26

3Com Corporation Limited Warranty 27

Electromagnetic Compatibility 30

INTRODUCTION

Welcome to the world of networking with 3Com®. In the modern business environment, communication and sharing information is crucial. Computer networks have proved to be one of the fastest modes of communication but, until recently, only large businesses could afford the networking advantage. The OfficeConnect® product range from 3Com has changed this, bringing networks to the small office.

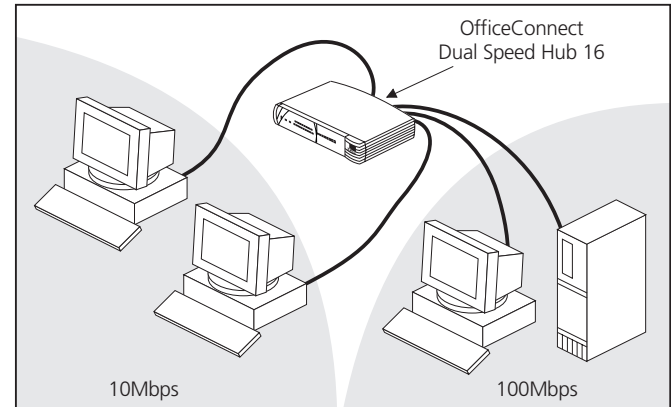
The OfficeConnect Dual Speed Hub 16 is ideal for creating small networks. It is compact and attractively designed for desktop use and can be used with other OfficeConnect products. This product forms part of the OfficeConnect range which neatly stack together with the OfficeConnect stacking clip.

The OfficeConnect Dual Speed Hub 16 is an easy-to-use Class II hub (repeater) with sixteen 10/100BASE-TX ports. It allows you to set up a network with both Ethernet (10Mbps) and Fast Ethernet (100Mbps) workstations and other devices (a Class II hub can be connected to another Fast Ethernet hub, a Class I hub cannot).

When referring to the OfficeConnect Dual Speed Hub 16, this guide uses the term 'Hub'. Each port on the Hub can be connected to either a 10BASE-T (Ethernet) or a 100BASE-TX (Fast Ethernet) device. The port senses the speed of the connected equipment and operates at the appropriate speed.

If you wish to extend an existing Ethernet network into Fast Ethernet, adding a Dual Speed Hub 16 can offer a more cost-effective migration path than adding both a 100Mbps hub and a 10/100Mbps switch.

Figure 1 Small Network With OfficeConnect Hub



If you need to connect more workstations, simply use the stacking clip to connect another OfficeConnect hub to form a stack.

CREATING YOUR NETWORK

Dual Speed Hub 16—Front

Alert LED

orange

Off when the Hub is operating correctly. Lit for a short period of time after power on, for self test. If the LED is continuously lit, there may be a problem. Refer to the "Problem Solving" section.

Power LED

green

Indicates that the power supply to the Hub is present.

Collision LEDs

yellow

Flash each time a collision is detected on the Hub's 100Mbps or 10Mbps segment. Collisions are a normal part of network operation.

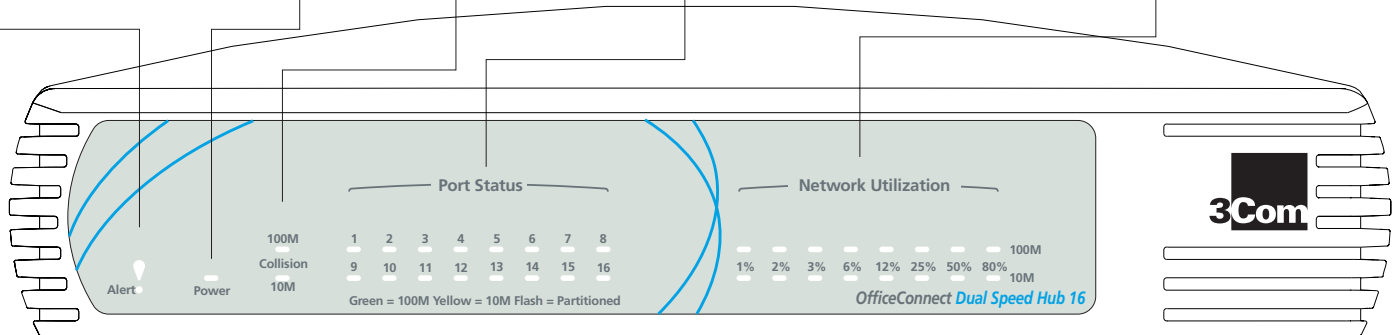
Port Status LEDs

green (100Mbps link) / yellow (10Mbps link)

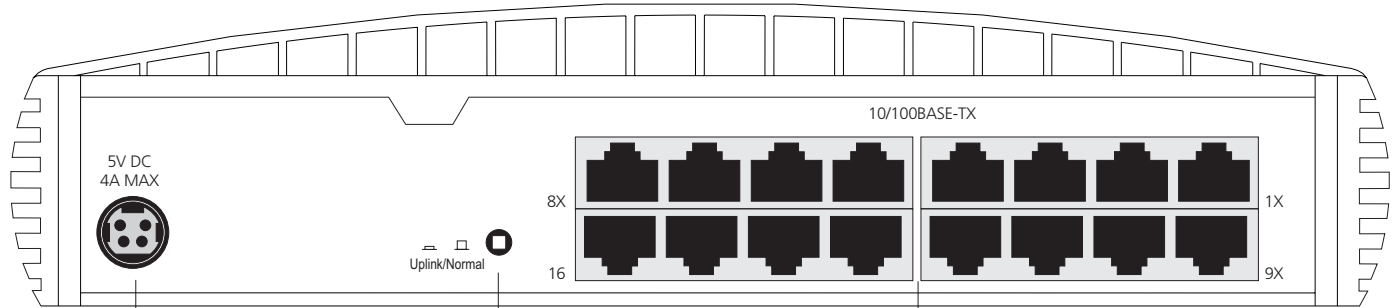
If the LED is on, the link between the port and the next piece of network equipment is OK. If the LED is off, nothing is connected, or the connected device is switched off, or there is a problem with the connection (refer to the "Problem Solving" section). If flashing, the port is partitioned, possibly due to a network loop.

Network Utilization LEDs

green / yellow / orange
(top row:100Mbps; bottom row:10Mbps)
Indicate how much the 100Mbps and 10Mbps segments of your network are being used.



Dual Speed Hub 16—Rear



▶ **Power Adapter socket**
Only use the power adapter that is supplied with this OfficeConnect Dual Speed Hub 16. Do not use any other adapter.


▶ **Uplink/Normal switch**
Affects the operation of port 16. If you are connecting another hub to port 16, set to Uplink (in), otherwise set to Normal (out). Refer to the "Connecting Another OfficeConnect Hub" section.

▶ **Sixteen 10/100BASE-TX ports**
Use suitable TP cable with RJ-45 connectors. You can connect the Hub to any workstation or other equipment that has a 10BASE-T or 100BASE-TX port. Each port is capable of autosensing for 10Mbps or 100Mbps operation.

Before You Start

Your OfficeConnect hub comes with:

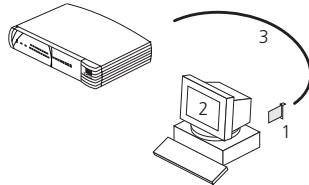
- One power adapter for use with the OfficeConnect hub.
- A Product Registration card for you to fill out and return.
- Four rubber feet.
- A stacking clip.
- Two unit labels and eight cable ties.
- An OfficeConnect Network Assistant CD-ROM.

 *The extra parts mentioned in the next section are not supplied with the hub.*


Workstation Connections

To connect workstations or other equipment to your hub, you need:

- 1** One 10BASE-T, 10/100BASE-TX, or 100BASE-TX adapter card for each workstation. 3Com produce a range of easy-to-install network adapters, which provide your workstation with a suitable connection.
- 2** An operating system (for example, Netware or Windows 95/98) with network support configured, running on your workstations.



- 3** One suitable TP cable for each workstation.

 *In order to comply with the 10BASE-T standard, ports designed for workstation connections have been marked with the graphical symbol 'x'. This denotes a crossover in the port's internal wiring, for example 1x, 2x, 3x...*

Twisted Pair (TP) Cables

To connect your workstations and other equipment to the Hub, use 'straight-through' TP cables with RJ-45 connectors (all OfficeConnect products use RJ-45 type connectors). A 'straight-through' cable is one where each pin of one connector is connected to the same pin of the other connector. Cables can be shielded (screened) or unshielded; we recommend that you use shielded cable. Cables used for 100BASE-TX or 10/100BASE-TX connections must be data grade (Category 5). Your supplier should stock suitable cables.

The maximum length of a single cable is 100m (328ft). Refer to "Fast Ethernet (100Mbps) Configuration Rules" on page 11 for further information on cable lengths in a 100Mbps network.

Hub Connections

To connect other OfficeConnect units to your Hub, you need one suitable TP cable for each unit.

Stacking the Units Together

The Rubber Feet

The four self-adhesive rubber feet prevent your hub from moving around on your desk. Only stick the feet to the marked areas at each corner of the underside of your hub if you intend to place the unit directly on top of the desk. Do not fix the feet if you are going to use the clip.

The Stacking Clip

The blue stacking clip allows you to stack your OfficeConnect units together neatly and securely.



CAUTION: You can stack up to a maximum of four units. Smaller units must be stacked above larger units.

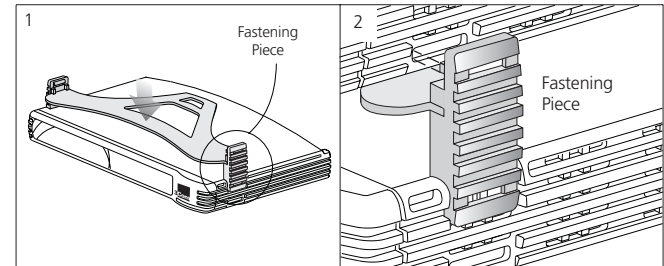
To fit the clip:

- 1 Place your unit on a flat surface.
- 2 Fit the clip across the top of the unit, as shown in Figure 2 (picture 1), ensuring that the longer sections of the fastening pieces are pointing downwards.
- 3 Align the fastening pieces over the slots found on each side of the unit.
- 4 Push the clip down gently to secure it, ensuring the fastening pieces snap into the slots on the unit.

To fit another unit:

- 1 Rest the second unit on top of the clip and align it with the front of the unit below.
- 2 Press down gently on the unit to secure it onto the clip, ensuring the fastening pieces fit into the slots on the unit below, as shown in Figure 2 (picture 2).

Figure 2 Stacking Your Units Together



To remove the clip:

- 1 Remove the top unit together with the clip. If you hook a finger around one of the the fastening pieces and then pull it gently from out of the slot, the clip should come away with the upper unit attached to it.
- 2 Push the clip in the center, so it bends towards the base of the unit, and then separate once the clip is loose.

Positioning Your Hub

When installing your OfficeConnect hub, ensure:

- It is out of direct sunlight and away from sources of heat.
- Cabling is away from power lines, fluorescent lighting fixtures, and sources of electrical noise such as radios, transmitters and broadband amplifiers.
- Water or moisture cannot enter the case of the unit.
- Air flow around the unit and through the vents in the side of the case is not restricted. We recommend you provide a minimum of 25.4 mm (1in.) clearance.

Securing Your Hub

There are two slots on the underside of the OfficeConnect hub which can be used for wall mounting. It is recommended that you mount the hubs with the LEDs facing upwards to prevent dust entering the cooling vents.



When wall mounting the unit, ensure that it is within reach of the power outlet.

You need two suitable screws. Ensure that the wall you are going to use is smooth, flat, dry and sturdy. Make two screw holes which are 142mm (5.6in.) apart. Use the template at the back of this guide to mark the position of the holes. Fix the screws into the wall, leaving their heads 3mm (0.12in.) clear of the wall surface.

Remove any connections to the unit and locate it over the screw heads. When in line, gently push the unit on to the wall and move it downwards to secure. When making connections, be careful not to push the unit up and off the wall.



CAUTION: *Only wall mount single units, do not wall mount stacked units.*

Also available from 3Com, is the OfficeConnect Mounting Unit (part number 3C16765). This allows you to firmly secure a stack of OfficeConnect devices to the desktop or onto a shelf in a rack.

Connecting Workstations and Other Equipment to Your Hub



WARNING: Please read the 'Important Safety Information' section before you start.

WARNHINWEIS: Bitte lesen Sie den Abschnitt 'Wichtige Sicherheitsinformationen' sorgfältig durch, bevor Sie das Gerät einschalten.

AVERTISSEMENT: Veuillez lire attentivement la section "Consignes importantes de sécurité" avant de mettre en route.



CAUTION: The equipment connected to the Hub must be set to operate in auto-negotiate or half duplex mode.

Connecting workstations and other equipment to your Hub is easy. To connect a workstation to any of the Hub's ports, use a 'straight-through' TP cable. Refer to "Twisted Pair (TP) Cables" on page 8 for further information.



If you are using port 16 to connect a workstation, ensure the Uplink/Normal switch is set to Normal (out).

TP cables are very easy to use. To connect a cable, simply slot the connector into the appropriate RJ-45 port. When the connector is fully in, its latch locks it in place. To

disconnect the cable, push the connector's latch in and remove it.

The Hub detects all port connections, so you can start using your network immediately. If you need more ports, simply add another OfficeConnect hub.

Connecting Another OfficeConnect Hub

You may wish to connect another OfficeConnect hub to your Dual Speed Hub 16. Alternatively, you may wish to add your Hub to an existing 10Mbps network. When extending your network, you should be aware of the configuration rules given below.



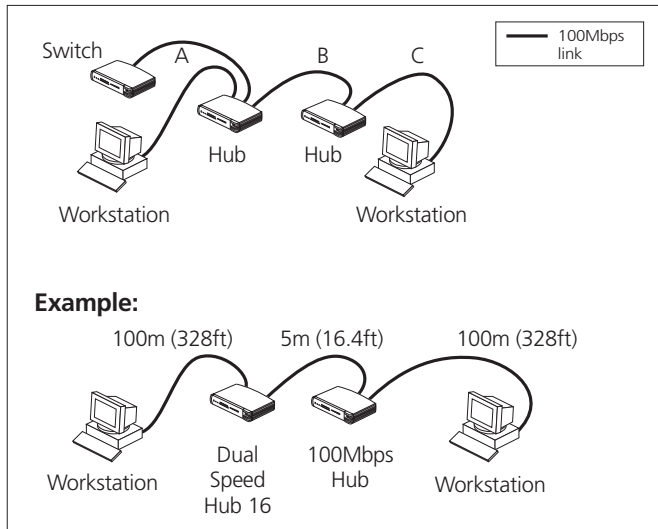
If you connect two Dual Speed Hub 16 units directly together, the link between them operates at 100Mbps.

Fast Ethernet (100Mbps) Configuration Rules

The Dual Speed Hub 16 is a Class II hub. You can connect directly two Class II Fast Ethernet hubs (Class I Fast Ethernet hubs cannot be connected directly to other Fast Ethernet hubs). The total length of cable (A + B + C) between two workstations, or between a workstation and a non-repeater piece of equipment (such as a switch), must not exceed 205m (672ft). Each cable (A, B, or C) must not exceed 100m (328ft).

3Com recommends that the cable (B) between the Fast Ethernet hubs is no longer than 5m (16.4ft). This allows the maximum hub-to-workstation cable length (A or C) of 100m (328ft) to be used, as shown in Figure 3.

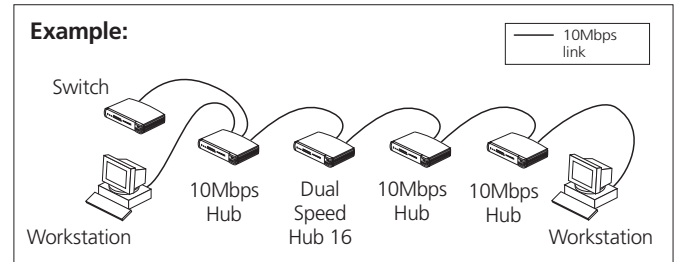
Figure 3 Configuration Rules and Example of a Fast Ethernet (100Mbps) Network



Ethernet (10Mbps) Configuration Rules

You can connect a maximum of four Ethernet (10Mbps) hubs in series between workstations, or between a workstation and a non-repeater piece of equipment (such as a switch). Each cable must not exceed 100m (328ft). An example is shown in Figure 4.

Figure 4 Example of an Ethernet (10Mbps) Network



Making the Connection to Another Hub

You can connect a 10BASE-T, 100BASE-TX, or another 10/100BASE-TX OfficeConnect hub to any port on the Dual Speed Hub 16. Use the following method:

- 1 Using a straight-through cable, connect the Uplink/Normal port of the Dual Speed Hub 16 to any of the ports on the other hub (as shown in Figure 5). If using an Uplink/Normal port on the other hub, set its Uplink/Normal switch to Normal (out).
- 2 Set the Uplink/Normal switch for the Uplink/Normal port on the Dual Speed Hub 16 to Uplink (in).

Checking Hub Connections

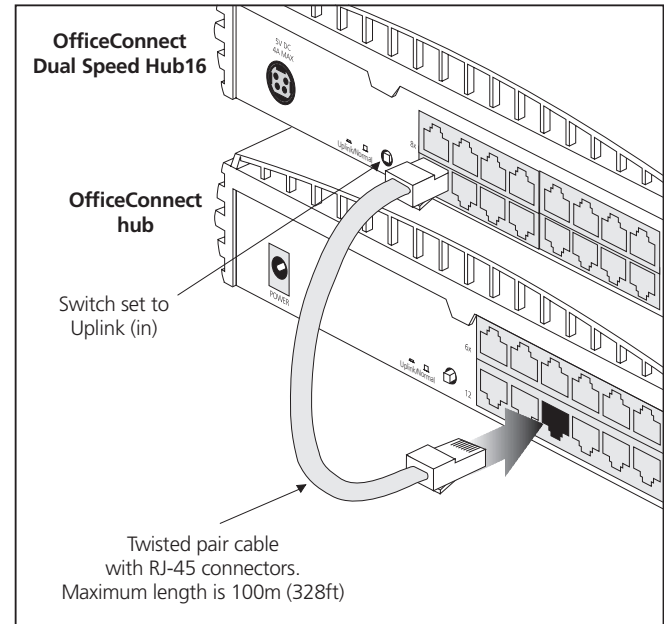
When you have connected all the appropriate workstations and other equipment to the Hub, power on the Hub. For each port with a connection, a Port Status LED should be on. If the port is operating at 100Mbps, the corresponding LED in the upper row of Port Status LEDs is on. If the port is operating at 10Mbps, the corresponding LED in the lower row is on. If neither LED is on, check your connections.

Spot Checks

At frequent intervals, visually check that:

- The Alert LED is off — this is the best way to find out if there are problems with your network.
- Case vents are not obstructed.
- Cabling is secure and not pulled taut.

Figure 5 Correct Connections for OfficeConnect Hubs



PROBLEM SOLVING

The OfficeConnect Hub has been designed to aid you when detecting and solving possible problems with your network. These problems are rarely serious; the cause is usually a disconnected or damaged cable, or incorrect configuration. If this section does not solve your problem, contact your supplier for information on what to do next.

Perform these actions first:

- Ensure all network equipment is powered on.
- Power each piece of network equipment off, wait about 5 seconds and then power each one on.

Check the following symptoms and solutions:

Power LED not lit. Check your power adapter connection. If there is still no power, you may have a faulty power adapter which needs replacing with an identical OfficeConnect power adapter. **Do not use any other power adapter with the Hub.**

10Mbps Port Status LED lit for a port with a 100Mbps device connected. This may be because the cable is not of a high enough quality to carry Fast Ethernet signals (we recommend you use a Category 5 cable), or due to a problem with the network card (NIC) of the attached equipment.

Alert LED continuously lit. There is a problem with the network. Check the Port Status LEDs to try to identify the port that is causing the problem. If one of the Port Status LEDs is flashing, that port has partitioned, probably due to a network loop. Examine your connections and remove the loop. Each piece of equipment needs only one connection to your Hub.

If you cannot identify such a port, remove the port connections one at a time, waiting a few seconds between each port. If the Alert LED goes off, there is either a network loop (see above), or an excessive amount of traffic on that port connection. Check the Network Utilization LEDs to see if the network is heavily loaded (over 80%). Some pieces of network equipment operate by sending out frames regularly. Refer to the documentation that accompanies the piece of network equipment.

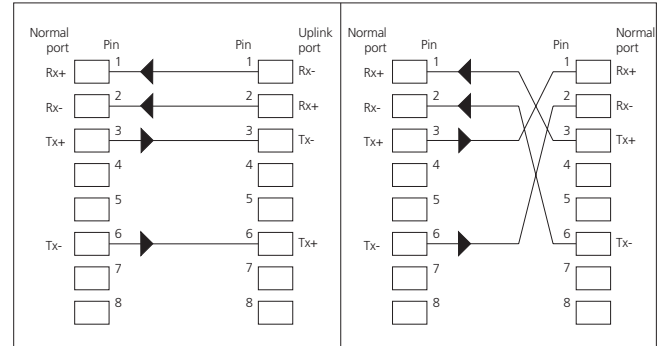
If the Alert LED is still lit after removing all of your connections, there may be a problem with your Hub. Turn off the power, wait about 5 seconds and then power on the hub. If the Alert LED comes back on continuously, contact your supplier.

Port Status LED flashing. The port is partitioned, probably due to a network loop. Examine your connections and remove the loop. Each piece of equipment needs only one connection to your Hub.

Link between the Hub and another OfficeConnect hub not working. Check your connections; follow the information given in the “Connecting Another OfficeConnect Hub” section on page 11. It is likely that an Uplink/Normal switch is incorrectly set.

Port Status LED not lit for a port that has a connection. Check that you are using a ‘straight-through’ cable which is properly connected at both ends, and is not damaged. Refer to “Twisted Pair (TP) Cables” on page 8. Also check that the equipment connected to the Hub is powered on, operating correctly and contains the correct type of connection. Refer to Figure 6 to compare the wiring of a straight-through and a crossover cable.

Figure 6 Straight-through Cable/Crossover Cable



NETWORKING TERMINOLOGY

A **Network** is a collection of workstations (for example, IBM-compatible PCs) and other equipment (for example, printers), connected for the purpose of exchanging information or sharing resources. Networks vary in size, some are within a single room, others span continents.

A **Local Area Network (LAN)** is a network, usually in an office, that spans no more than a single site.

Ethernet is a type of LAN, referring to the technology used to pass information around the network. It operates at 10Mbps (megabits per second).

Fast Ethernet is a type of LAN that runs up to 10 times faster than standard Ethernet. It operates at 100Mbps.

10BASE-T and **100BASE-TX** are the names given to the Ethernet protocol that runs over **Twisted Pair (TP)** cable. 10BASE-T runs at 10Mbps whilst 100BASE-TX operates at 100Mbps. The OfficeConnect hub uses RJ-45 type connectors for connecting your TP network.

A **Network Loop** occurs when two pieces of network equipment are connected by more than one path. Your hub detects this and **partitions** (isolates) one of its ports to break the loop.

A **segment** is the length of cable connected to a port.

Packets are the units of information your workstations and other equipment send to each other over the network. A **frame** is the data part of the packet and can be **unicast** (sent to a single device), **multicast** (sent to multiple devices), or **broadcast** (sent to all devices).

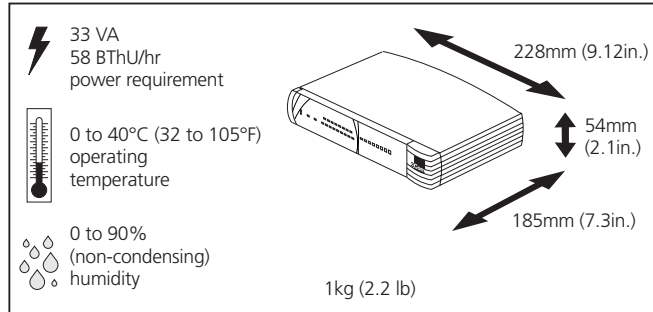
Bandwidth refers to the amount of network traffic the network can hold at any one time (information capacity) measured in **bits per second (bps)**. Workstations or applications that use the network heavily are referred to as using high bandwidth. Fast Ethernet has a higher bandwidth than Ethernet, so it can cope with larger amounts of traffic, which results in faster operation.

A **half duplex** link allows information to flow in either direction, but not in either direction simultaneously.

Collisions are part of normal ethernet operation and occur if other network equipment attempts to transmit at the same time. A sudden sustained increase in the number of collisions may indicate a problem with the device.

DIMENSIONS AND STANDARDS

Dimensions and Operating Conditions



Standards

Functional:	ISO 8802/3 IEEE 802.3
Safety:	UL 1950, EN 60950 CSA 22.2 #950 IEC 950
EMC:	EN 55022 Class B [†] EN 50082-1 FCC Part 15 Class B ^{†*} ICES-003 Class B [†] VCCI Class B [†] CNS 13438 Class A
Environmental:	EN 60068 (IEC 68)

[†]Category 5 screened cables must be used to ensure compliance with the Class B requirements of this standard. The use of unscreened cables (category 3 or category 5) complies with the Class A requirements.

*Refer to "Electromagnetic Compatibility" on page 30 for conditions of operation.[†]

ENVIRONMENTAL STATEMENTS

It is the policy of 3Com Corporation to be environmentally-friendly in all operations. To uphold our policy, we are committed to:

- Establishing environmental performance standards that comply with national legislation and regulations.
- Conserving energy, materials and natural resources in all operations.
- Reducing the waste generated by all operations.
- Ensuring that all waste conforms to recognized environmental standards.
- Maximizing the recyclable and reusable content of all products.
- Ensuring that all products can be recycled, reused and disposed of safely.
- Ensuring that all products are labelled according to recognized environmental standards.
- Improving our environmental record on a continual basis.

End Of Life Statement

3Com processes allow for the recovery, reclamation and safe disposal of all end-of-life electronic components.

Regulated Materials Statement

3Com products do not contain any hazardous or ozone-depleting material.

Environmental Statement about the Documentation

The documentation for this product is printed on paper that comes from sustainable, managed forests; it is fully biodegradable and recyclable, and is completely chlorine-free. The varnish is environmentally-friendly, and the inks are vegetable-based with a low heavy-metal content.

Environmental Statement about the Product Packaging

The packaging for this product is fully recyclable. It has a recycled (post consumer) waste content of at least 40% by weight, and no heavy-metal content.

IMPORTANT SAFETY INFORMATION



WARNING: Warnings contain directions that you must follow for your personal safety. Follow all directions carefully.

You must read the following safety information carefully before you install or remove the unit:

- Exceptional care must be taken during installation and removal of the unit.
- Only stack the OfficeConnect hub with other OfficeConnect units.
- To ensure compliance with international safety standards, only use the power adapter that is supplied with the unit.
- The socket outlet must be near to the unit and easily accessible. You can only remove power from the unit by disconnecting the power cord from the outlet.
- This unit operates under SELV (Safety Extra Low Voltage) conditions according to IEC 950. The conditions are only maintained if the equipment to which it is connected also operates under SELV conditions.

- There are no user-replaceable fuses or user-serviceable parts inside the hub. If you have a physical problem with the unit that cannot be solved with problem solving actions in this guide, contact your supplier.
- Disconnect the power adapter before moving the unit.



WARNING: RJ-45 ports. These are shielded RJ-45 data sockets. They cannot be used as telephone sockets. Only connect RJ-45 data connectors to these sockets.

WICHTIGE SICHERHEITSHINWEISE



WARNHINWEIS: *Warnhinweise enthalten Anweisungen, die Sie zu Ihrer eigenen Sicherheit befolgen müssen. Alle Anweisungen sind sorgfältig zu befolgen. Sie müssen die folgenden Sicherheitsinformationen sorgfältig durchlesen, bevor Sie das Gerats installieren oder ausbauen:*

- Bei der Installation und beim Ausbau des Gerats ist mit hochster Vorsicht vorzugehen.
- Stapeln Sie das Gerats nur mit anderen OfficeConnect Gerates zusammen.
- Aufgrund von internationalen Sicherheitsnormen darf das Gerat nur mit dem mitgelieferten Netzadapter verwendet werden.
- Die Netzsteckdose mu in der Nahе des Gerats und leicht zuganglich sein. Die Stromversorgung des Gerats kann nur durch Herausziehen des Geratenetzkabels aus der Netzsteckdose unterbrochen werden.
- Der Betrieb dieses Gerats erfolgt unter den SELV-Bedingungen (Sicherheitskleinstspannung) gem IEC 950. Diese Bedingungen sind nur gegeben, wenn auch die an das Gerat angeschlossenen Gerate unter SELV-Bedingungen betrieben werden.

- Es sind keine von dem Benutzer zu ersetzende oder zu wartende Teile in dem Gerat vorhanden. Wenn Sie ein Problem mit dem Switch haben, das nicht mittels der Fehleranalyse in dieser Anleitung behoben werden kann, setzen Sie sich mit Ihrem Lieferanten in Verbindung.
- Vor dem Ausbau des Gerats das Netzadapterkabel herausziehen.



WARNHINWEIS: RJ-45-Anschlsse. *Dies sind abgeschirmte RJ-45-Datenbuchsen. Sie konnen nicht als Telefonanschlubuchsen verwendet werden. An diesen Buchsen drfen nur RJ-45-Datenstecker angeschlossen werden.*

CONSIGNES IMPORTANTES DE SÉCURITÉ



AVERTISSEMENT: Les avertissements présentent des consignes que vous devez respecter pour garantir votre sécurité personnelle. Vous devez respecter attentivement toutes les consignes. Nous vous demandons de lire attentivement les consignes suivantes de sécurité avant d'installer ou de retirer l'appareil:

- Faites très attention lors de l'installation et de la dépose du groupe.
- Seulement entasser le moyeu avec les autres moyeux OfficeConnects.
- Pour garantir le respect des normes internationales de sécurité, utilisez uniquement l'adaptateur électrique remis avec cet appareil.
- La prise secteur doit se trouver à proximité de l'appareil et son accès doit être facile. Vous ne pouvez mettre l'appareil hors circuit qu'en débranchant son cordon électrique au niveau de cette prise.
- L'appareil fonctionne à une tension extrêmement basse de sécurité qui est conforme à la norme CEI 950. Ces conditions ne sont maintenues que si l'équipement auquel il est raccordé fonctionne dans les mêmes conditions.

- Il n'y a pas de parties remplaçables par les utilisateurs ou entretenues par les utilisateurs à l'intérieur du moyeu. Si vous avez un problème physique avec le moyeu qui ne peut pas être résolu avec les actions de la résolution des problèmes dans ce guide, contacter votre fournisseur.
- Débranchez l'adaptateur électrique avant de retirer cet appareil.



AVERTISSEMENT: Ports RJ-45. Il s'agit de prises femelles blindées de données RJ-45. Vous ne pouvez pas les utiliser comme prise de téléphone. Branchez uniquement des connecteurs de données RJ-45 sur ces prises femelles.

TECHNICAL SUPPORT

3Com provides easy access to technical support information through a variety of services. This section describes these services.

Information contained in this section is correct at time of publication. For the most recent information, 3Com recommends that you access the 3Com Corporation World Wide Web site.

Online Technical Services

3Com offers worldwide product support 24 hours a day, 7 days a week, through the following online systems:

- World Wide Web site.
- 3Com Knowledgebase Web Services.

World Wide Web Site

To access the latest networking information on the 3Com Corporation World Wide Web site, enter this URL into your Internet browser:

<http://www.3com.com/>

This service provides access to online support information such as technical documentation and software, as well as support options that range from technical education to maintenance and professional services.

3Com Knowledgebase Web Services

This interactive tool contains technical product information compiled by 3Com expert technical engineers around the globe. Located on the World Wide Web at:

<http://knowledgebase.3com.com>.

This service gives all 3Com customers and partners complementary, round-the-clock access to technical information on most 3Com products.

Support from Your Network Supplier

If you require additional assistance, contact your network supplier. Many suppliers are authorized 3Com service partners who are qualified to provide a variety of services, including network planning, installation, hardware maintenance, application training, and support services.

When you contact your network supplier for assistance, have the following information ready:

- Product model name, part number, and serial number.
- A list of system hardware and software, including revision levels.
- Diagnostic error messages.
- Details about recent configuration changes, if applicable.

If you are unable to contact your network supplier, see the following section on how to contact 3Com.

Support from 3Com

If you are unable to obtain assistance from the 3Com online technical resources or from your network supplier, 3Com offers technical telephone support services. To find out more about your support options, call the 3Com technical telephone support phone number at the location nearest you.

When you contact 3Com for assistance, have the following information ready:

- Product model name, part number, and serial number.
- A list of system hardware and software, including revision levels.
- Diagnostic error messages.
- Details about recent configuration changes, if applicable.

Here is a list of worldwide technical telephone support numbers:

Country	Telephone Number	Country	Telephone Number
Asia, Pacific Rim			
Australia	1 800 678 515	P.R. of China	10800 61 00137 or
Hong Kong	800 933 486		021 6350 1590
India	+61 2 9937 5085	Singapore	800 6161 463
Indonesia	001 800 61 009	S. Korea	
Japan	0031 61 6439	From anywhere in S. Korea:	00798 611 2230
Malaysia	1800 801 777	From Seoul:	(0)2 3455 6455
New Zealand	0800 446 398	Taiwan, R.O.C.	0080 611 261
Pakistan	+61 2 9937 5085	Thailand	001 800 611 2000
Philippines	1235 61 266 2602		
Europe			
From anywhere in Europe, call:	+31 (0)30 6029900 phone		
	+31 (0)30 6029999 fax		
Europe, South Africa, and Middle East			
From the following countries, you may use the toll-free numbers:			
Austria	0800 297468	Netherlands	0800 0227788
Belgium	0800 71429	Norway	800 11376
Denmark	800 17309	Poland	00800 3111206
Finland	0800 113153	Portugal	0800 831416
France	0800 917959	South Africa	0800 995014
Germany	0800 1821502	Spain	900 983125
Hungary	00800 12813	Sweden	020 795482
Ireland	1800 553117	Switzerland	0800 55 3072
Israel	1800 9453794	U.K.	0800 966197
Italy	1678 79489		

Country	Telephone Number	Country	Telephone Number
Latin America			
Argentina	AT&T +800 666 5065	Mexico	01 800 CARE (01 800
Brazil	0800 13 3266	Peru	2273)
Chile	1230 020 0645	Puerto Rico	AT&T +800 666 5065
Colombia	98012 2127	Venezuela	800 666 5065
			AT&T +800 666 5065
North America			
	1 800 876-3266		

Returning Products for Repair

Before you send a product directly to 3Com for repair, you must first obtain a Return Material Authorization (RMA) number. Products sent to 3Com without authorization numbers will be returned to the sender unopened, at the sender's expense.

To obtain an authorization number, call or fax:

Country	Telephone Number	Fax Number
Asia, Pacific Rim	+ 65 543 6500	+ 65 543 6348
Europe, South Africa, and Middle East	+ 31 30 6029900	+ 31 30 6029999
Latin America	1 408 326 2927	1 408 326 3355

From the following countries, you may call the toll-free numbers; select option 2 and then option 2:

Country	Telephone Number	Fax Number
Austria	0800 297468	
Belgium	0800 71429	
Denmark	800 17309	
Finland	0800 113153	
France	0800 917959	
Germany	0800 1821502	
Hungary	00800 12813	
Ireland	1800553117	
Israel	1800 9453794	
Italy	1678 79489	
Netherlands	0800 0227788	
Norway	800 11376	
Poland	00800 3111206	
Portugal	0800 831416	
South Africa	0800 995014	
Spain	900 983125	
Sweden	020 795482	
Switzerland	0800 55 3072	
U.K.	0800 966197	
U.S.A. and Canada	1 800 876 3266	1 408 326 7120 (not toll-free)

3Com Corporation LIMITED WARRANTY

3Com OfficeConnect Dual Speed Hub 16

The duration of the warranty for the OfficeConnect Dual Speed Hub 16 (3C16751A) is lifetime, including the power adapter.

Advance hardware exchange is available during the first year from your date of purchase in accordance with 3Com's standard terms and conditions for such service. After the first year the warranty reverts to 3Com's standard lifetime limited warranty.

To qualify for the lifetime limited warranty and the advance hardware exchange you must submit the appropriate product warranty registration card to 3Com, otherwise this product will be warranted for a period of one (1) year without advance hardware exchange.

HARDWARE

3Com warrants this hardware product to be free from defects in workmanship and materials, under normal use and service, for the following length of time from the date of purchase from 3Com or its authorized reseller:

One (1) year (unless otherwise specified above)

3Com's sole obligation under this express warranty shall be, at 3Com's option and expense, to repair the defective product or part, deliver to Customer an equivalent product or part to replace the defective item, or if neither of the two foregoing options is reasonably available, 3Com may, in its sole discretion, refund to Customer the purchase price paid for the defective product. All products that are replaced will become the property of 3Com. Replacement products may be new or reconditioned. 3Com warrants any replaced or repaired product or part for ninety (90) days from shipment, or the remainder of the initial warranty period, whichever is longer.

SOFTWARE

3Com warrants that each software program licensed from it will perform in substantial conformance to its program specifications, for a period of ninety (90) days from the date of purchase from 3Com or its authorized reseller. 3Com warrants the media containing software against failure during the warranty period. No updates are provided. 3Com's sole obligation under this express warranty shall be, at 3Com's option and expense, to refund the purchase price paid by Customer for any defective software product, or to replace any defective media with software which substantially conforms to applicable 3Com published

specifications. Customer assumes responsibility for the selection of the appropriate applications program and associated reference materials. 3Com makes no warranty or representation that its software products will meet Customer's requirements or work in combination with any hardware or applications software products provided by third parties, that the operation of the software products will be uninterrupted or error free, or that all defects in the software products will be corrected. For any third party products listed in the 3Com software product documentation or specifications as being compatible, 3Com will make reasonable efforts to provide compatibility, except where the non-compatibility is caused by a "bug" or defect in the third party's product or from use of the software product not in accordance with 3Com's published specifications or user manual.

YEAR 2000 WARRANTY

In addition to the Hardware Warranty and Software Warranty stated above, 3Com warrants that each product sold or licensed to Customer on and after January 1, 1998 that is date sensitive will continue performing properly with regard to such date data on and after January 1, 2000, provided that all other products used by Customer in connection or combination with the 3Com product, including hardware, software, and firmware, accurately exchange date data with the 3Com product, with the exception of those products identified at 3Com's Web site, <http://www.3com.com/products/yr2000.html>, as not meeting this standard. If it appears that any product that is stated to meet this standard does not perform properly with regard to such date data on and after January 1, 2000, and Customer notifies 3Com before the later of April 1, 2000, or ninety (90) days after purchase of the product from 3Com or its authorized reseller, 3Com shall, at its option and expense, provide a software update which would effect the proper performance of such product, repair such product, deliver to Customer an equivalent product to replace such product, or if none of the foregoing is feasible, refund to Customer the purchase price paid for such product.

Any software update or replaced or repaired product will carry a Year 2000 Warranty for ninety (90) days after purchase or until April 1, 2000, whichever is later.

OBTAINING WARRANTY SERVICE

Customer must contact a 3Com Corporate Service Center or an Authorized 3Com Service Center within the applicable warranty period to obtain warranty service authorization. Dated proof of purchase from 3Com or its authorized reseller may be required. Products returned to 3Com's Corporate Service Center must be pre-authorized by 3Com with a Return Material Authorization (RMA) number

marked on the outside of the package, and sent prepaid and packaged appropriately for safe shipment, and it is recommended that they be insured or sent by a method that provides for tracking of the package. The repaired or replaced item will be shipped to Customer, at 3Com's expense, not later than thirty (30) days after 3Com receives the defective product.

Dead- or Defective-on-Arrival. In the event a product completely fails to function or exhibits a defect in materials or workmanship within the first forty-eight (48) hours of installation but no later than thirty (30) days after the date of purchase, and this is verified by 3Com, it will be considered dead- or defective-on-arrival (DOA) and a replacement shall be provided by advance replacement. The replacement product will normally be shipped not later than three (3) business days after 3Com's verification of the DOA product, but may be delayed due to export or import procedures. When an advance replacement is provided and Customer fails to return the original product to 3Com within fifteen (15) days after shipment of the replacement, 3Com will charge Customer for the replacement product, at list price.

3Com shall not be responsible for any software, firmware, information, or memory data of Customer contained in, stored on, or integrated with any products returned to 3Com for repair, whether under warranty or not.

ADDITIONAL SERVICES:

Telephone Support. This OfficeConnect® product comes with telephone technical support for ninety (90) days. The ninety (90) day period begins on the date of Customer's product purchase.

The telephone technical support is available from 3Com from 9 a.m. to 5 p.m., local time, Monday through Friday, excluding local holidays. Telephone technical support is limited to the 3Com products designated above and may include assistance with installation, product specific configuration, and identification of equipment problems. Please refer to the Technical Support appendix in the User Guide for telephone numbers.

Response to requests for telephone technical support will be in the form of a return call from a 3Com representative by close of business the following business day.

To qualify for this 90 days of telephone technical support, you must register on the 3Com Web site at <http://support.3Com.com/index.htm>, and provide your date of purchase, product number, and serial number. 3Com reserves the right to modify or cancel this telephone support offering at any time, without advance notice. This offer is not available where prohibited or restricted by law.

3Com's Web and Bulletin Board Service are available at no charge, and provide software and firmware upgrades, a bug list, and technical information about 3Com products.

WARRANTIES EXCLUSIVE

IF A 3COM PRODUCT DOES NOT OPERATE AS WARRANTED ABOVE, CUSTOMER'S SOLE REMEDY FOR BREACH OF THAT WARRANTY SHALL BE REPAIR, REPLACEMENT, OR REFUND OF THE PURCHASE PRICE PAID, AT 3COM'S OPTION. TO THE FULL EXTENT ALLOWED BY LAW, THE FOREGOING WARRANTIES AND REMEDIES ARE EXCLUSIVE AND ARE IN LIEU OF ALL OTHER WARRANTIES, TERMS, OR CONDITIONS, EXPRESS OR IMPLIED, EITHER IN FACT OR BY OPERATION OF LAW, STATUTORY OR OTHERWISE, INCLUDING WARRANTIES, TERMS, OR CONDITIONS OF MERCHANTABILITY, FITNESS FOR A PARTICULAR PURPOSE, SATISFACTORY QUALITY, CORRESPONDENCE WITH DESCRIPTION, AND NON-INFRINGEMENT, ALL OF WHICH ARE EXPRESSLY DISCLAIMED. 3COM NEITHER ASSUMES NOR AUTHORIZES ANY OTHER PERSON TO ASSUME FOR IT ANY OTHER LIABILITY IN CONNECTION WITH THE SALE, INSTALLATION, MAINTENANCE OR USE OF ITS PRODUCTS.

3COM SHALL NOT BE LIABLE UNDER THIS WARRANTY IF ITS TESTING AND EXAMINATION DISCLOSE THAT THE ALLEGED DEFECT OR MALFUNCTION IN THE PRODUCT DOES NOT EXIST OR WAS CAUSED BY CUSTOMER'S OR ANY THIRD PERSON'S MISUSE, NEGLIGENCE, IMPROPER INSTALLATION OR TESTING, UNAUTHORIZED ATTEMPTS TO OPEN, REPAIR OR MODIFY THE PRODUCT, OR ANY OTHER CAUSE BEYOND THE RANGE OF THE INTENDED USE, OR BY ACCIDENT, FIRE, LIGHTNING, OTHER HAZARDS, OR ACTS OF GOD.

LIMITATION OF LIABILITY

TO THE FULL EXTENT ALLOWED BY LAW, 3COM ALSO EXCLUDES FOR ITSELF AND ITS SUPPLIERS ANY LIABILITY, WHETHER BASED IN CONTRACT OR TORT (INCLUDING NEGLIGENCE), FOR INCIDENTAL, CONSEQUENTIAL, INDIRECT, SPECIAL, OR PUNITIVE DAMAGES OF ANY KIND, OR FOR LOSS OF REVENUE OR PROFITS, LOSS OF BUSINESS, LOSS OF INFORMATION OR DATA, OR OTHER FINANCIAL LOSS ARISING OUT OF OR IN CONNECTION WITH THE SALE, INSTALLATION, MAINTENANCE, USE, PERFORMANCE, FAILURE, OR INTERRUPTION OF ITS PRODUCTS, EVEN IF 3COM OR ITS AUTHORIZED RESELLER HAS BEEN ADVISED OF THE POSSIBILITY OF SUCH DAMAGES, AND LIMITS ITS LIABILITY TO REPAIR, REPLACEMENT, OR REFUND OF THE PURCHASE PRICE PAID, AT 3COM'S OPTION. THIS DISCLAIMER OF LIABILITY FOR DAMAGES WILL NOT BE AFFECTED IF ANY REMEDY PROVIDED HEREIN SHALL FAIL OF ITS ESSENTIAL PURPOSE.

DISCLAIMER

Some countries, states, or provinces do not allow the exclusion or limitation of implied warranties or the limitation of incidental or consequential damages for certain products supplied to consumers, or the limitation of liability for personal injury, so the above limitations and exclusions may be limited in their application to you. When the implied warranties are not allowed to be excluded in their entirety, they will be limited to the duration of the applicable written warranty. This warranty gives you specific legal rights which may vary depending on local law.

GOVERNING LAW

This Limited Warranty shall be governed by the laws of the State of California, U.S.A. excluding its conflicts of laws principles and excluding the United Nations Convention on Contracts for the International Sale of Goods.

3Com Corporation
5400 Bayfront Plaza
Santa Clara, CA 95054
(408) 326-5000

ELECTROMAGNETIC COMPATIBILITY

FCC STATEMENT

This equipment has been tested and found to comply with the limits for a Class B digital device, pursuant to Part 15 of the FCC Rules, and the Canadian Department of Communications Equipment Standards entitled, "Digital Apparatus," ICES-003. These limits are designed to provide reasonable protection against harmful interference in a residential installation. This equipment generates, uses and can radiate radio frequency energy and, if not installed and used in accordance with the instructions, may cause harmful interference to radio communications. However, there is no guarantee that interference will not occur in a particular installation.

If this equipment does cause interference to radio or television reception, which can be determined by turning the equipment off and on, the user is encouraged to try to correct the interference by one or more of the following measures:

- Reorient the receiving antenna.
- Relocate the equipment with respect to the receiver.
- Move the equipment away from the receiver.
- Plug the equipment into a different outlet so that equipment and receiver are on different branch circuits.
- Consult the dealer or an experienced radio/television technician for help.

CSA STATEMENT

This Class B digital apparatus meets all requirements of the Canadian Interference-Causing Equipment Regulations.

Cet appareil numérique de la classe B respecte toutes les exigences du Règlement sur le matériel brouilleur du Canada.

VCCI STATEMENT

この装置は、情報処理装置等電波障害自主規制協議会（VCCI）の基準に基づくクラスB情報技術装置です。この装置は、家庭環境で使用することを目的としていますが、この装置がラジオやテレビジョン受信機に近接して使用されると、受信障害を引き起こすことがあります。

取扱説明書に従って正しい取り扱いをして下さい。

BCIQ STATEMENT

警告使用者：這是甲類的資訊產品，在居住的環境中使用時，可能會造成射頻干擾，在這種情況下，使用者會被要求採取某些適當的對策。

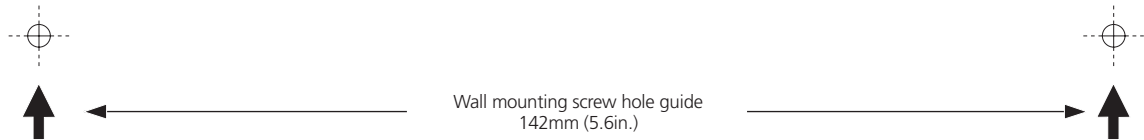
INFORMATION TO THE USER

The user may find the following booklet prepared by the Federal Communications Commission helpful:

How to Identify and Resolve Radio-TV Interference Problems

This booklet is available from the U.S. Government Printing Office, Washington, DC 20402, Stock No. 004-000-00345-4.

In order to meet FCC emissions limits, this equipment must be used only with cables which comply with IEEE 802.3.



Part No. DUA 1675-1AAA02
Published June 1999

Free Manuals Download Website

<http://myh66.com>

<http://usermanuals.us>

<http://www.somanuals.com>

<http://www.4manuals.cc>

<http://www.manual-lib.com>

<http://www.404manual.com>

<http://www.luxmanual.com>

<http://aubethermostatmanual.com>

Golf course search by state

<http://golfingnear.com>

Email search by domain

<http://emailbydomain.com>

Auto manuals search

<http://auto.somanuals.com>

TV manuals search

<http://tv.somanuals.com>