

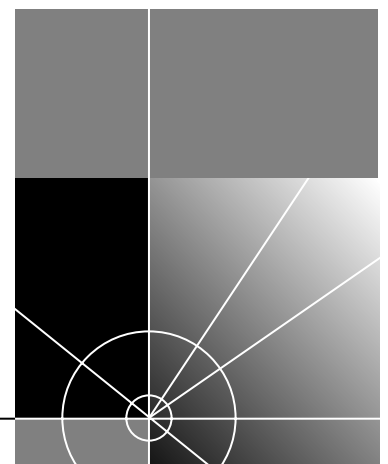


# Upgrading Enterprise OS Software

Software version 11.3

<http://www.3com.com/>

Part No. 09-1551-001  
Published May 1999



**3Com Corporation**  
**5400 Bayfront Plaza**  
**Santa Clara, California**  
**95052-8145**

© **3Com Corporation, 1999**. All rights reserved. No part of this documentation may be reproduced in any form or by any means or used to make any derivative work (such as translation, transformation, or adaptation) without permission from 3Com Corporation.

3Com Corporation reserves the right to revise this documentation and to make changes in content from time to time without obligation on the part of 3Com Corporation to provide notification of such revision or change.

3Com Corporation provides this documentation without warranty of any kind, either implied or expressed, including, but not limited to, the implied warranties of merchantability and fitness for a particular purpose. 3Com may make improvements or changes in the product(s) and/or the program(s) described in this documentation at any time.

**UNITED STATES GOVERNMENT LEGENDS:**

If you are a United States government agency, then this documentation and the software described herein are provided to you subject to the following restricted rights:

**For units of the Department of Defense:**

*Restricted Rights Legend:* Use, duplication, or disclosure by the Government is subject to restrictions as set forth in subparagraph (c) (1) (ii) for Restricted Rights in Technical Data and Computer Software Clause at 48 C.F.R. 52.227-7013. 3Com Corporation, 5400 Bayfront Plaza, Santa Clara, California 95052-8145.

**For civilian agencies:**

*Restricted Rights Legend:* Use, reproduction, or disclosure is subject to restrictions set forth in subparagraph (a) through (d) of the Commercial Computer Software - Restricted Rights Clause at 48 C.F.R. 52.227-19 and the limitations set forth in 3Com Corporation's standard commercial agreement for the software. Unpublished rights reserved under the copyright laws of the United States.

If there is any software on removable media described in this documentation, it is furnished under a license agreement included with the product as a separate document, in the hard copy documentation, or on the removable media in a directory file named LICENSE.TXT. If you are unable to locate a copy, please contact 3Com and a copy will be provided to you.

Unless otherwise indicated, 3Com registered trademarks are registered in the United States and may or may not be registered in other countries.

3Com, Boundary Routing, Net Age, NETBuilder, NETBuilder II, OfficeConnect, SuperStack, and Transcend are registered trademarks of 3Com Corporation. 3TECH and PathBuilder are trademarks of 3Com Corporation. 3ComFacts is a service mark of 3Com Corporation.

CompuServe is a registered trademark of CompuServe, Inc. Windows is a registered trademark of Microsoft Corporation. Solaris is a registered trademark of Sun Microsystems, Inc. SunOS is a trademark of Sun Microsystems, Inc. UNIX is a registered trademark of Xopen Company Limited. IBM, APPN, and SNA are registered trademarks of International Business Machines Corporation. HP is a registered trademark of Hewlett-Packard Company. Novell is a registered trademark of Novell, Inc. ProComm Plus for Windows is a registered trademark of DataStorm Corporation. Crosstalk for Windows is a registered trademark of Attachmate Corporation.

Other brand and product names may be registered trademarks or trademarks of their respective holders.

**The software contained in this product may contain encrypted product which may not be exported or transferred from the U.S. or Canada without an approved U.S. Department of Commerce export license.**

Printed on recycled paper.

# CONTENTS

---

## ABOUT THIS GUIDE

- Conventions 7
- Year 2000 Compliance 8

---

## 1 OVERVIEW

- Upgrade Tools and Process 9
  - How the Utilities Work 10
    - Primary, Secondary, and Test Boot Sources 10
    - Automatic or Manual Recovery 10
- Rules and Support Limitations 11
- Take Time to Plan 11

---

## 2 INSTALLING THE UTILITIES ON A NETWORK MANAGEMENT STATION

- Installing the Utilities on a Windows System 13
- Installing the Utilities on a UNIX System 14
  - Preparing for the Installation 14
  - Procedure 14
  - Setting up for Auto Startup 16

---

## 3 PLANNING AND PREPARING THE UPGRADE

- Setting up for TFTP File Transfers 17
- Setting up for FTP File Transfers 17
- Automatic Recovery 18
- Manual Recovery 19
- Checking DRAM 20
- Checking Flash Memory 20
- Checking the Software Version 21
- Planning Tables 21

---

## 4 UPGRADING USING THE NETBUILDER UPGRADE LINK APPLICATION

- Status and Settings Pages 27
  - Settings Page 28
- Verifying for Upgrading 29
- Installing Software on the NMS 29
  - Procedure 30
- Upgrading Software 31

---

## 5 UPGRADING A BRIDGE/ROUTER USING THE COMMAND-LINE UTILITIES

Preparing for the Upgrade	35
Setting up for TFTP File Transfers	36
Setting up for FTP File Transfers	36
Prediagnosing System Problems	37
Installing the Software on the NMS	37
Software Directories	38
Using the Bcmsysupgrade Utility to Upgrade	39
Filenames	40
NETBuilder II Bridge/Router	40
SuperStack II NETBuilder and OfficeConnect NETBuilder Bridge/Routers	41
PathBuilder S5xx Series Switch	41
Upgrading Software Only	41
Automatic Recovery	41
Manual Recovery	43
If the Bridge/Router or Switch Does Not Boot	44
Upgrading Hardware and Software	44
Automatic Recovery	44
Manual Recovery	47
If the Bridge/Router or Switch Does Not Boot	49

---

## 6 UPGRADING THE SOFTWARE IMAGE ONLY

Preparing for the Upgrade	51
Setting up for TFTP File Transfers	52
Setting up for FTP File Transfers	52
Using Upgrade Link	53
Verifying the Bridge/Router for Upgrading	54
Upgrading the Image	54
Using the Command-Line Utilities	57
Installing the NETBuilder Software	57
Prediagnosing System Problems	57
Upgrading Using Automatic Recovery	57
Upgrading Using Manual Recovery	58
Using the Enterprise OS User Interface	59

---

## 7 BACKING UP AND RESTORING SOFTWARE

Setting Up for TFTP File Transfers	62
Setting Up for FTP File Transfers	62
Backing Up the Software	63
Using NETBuilder Upgrade Link	63
Using the Command Line Utilities	63
Verifying the Device for Backing Up	63
Backing Up the Software	64
Using the Command-Line	64
Prediagnosing System Problems	64
Backing Up the Software	65

Directory Paths	65
Restoring Software from a Backup	66
Configuring IP Routing	66
Configuring SNMP	66
Mapping Hostnames Using the etc/snmp.cfg File	67
Restoring the Software Using Upgrade Link	68
Verifying the Device for Restoring	68
Restoring the Software	68
Restoring the Software Using the Command-Line	69
Prediagnosing System Problems	69
Restoring the Software	69

---

## 8 REFERENCE FOR THE UPGRADE MANAGEMENT UTILITIES

Accessing and Downloading the Utilities	71
Downloading the Utilities	71
Downloading UNIX Files	71
Downloading Windows Files	71
Update Log File	72
Utility Descriptions and Syntax	72
Overview	72
Getting Help	73
bcmbackup	73
bcmconfig	74
bcmctrl	75
bcmdf	76
bcmdiagnose	77
bcminstall	78
bcmloadconfig	79
bcmnbrus	80
bcmrestore	80
bcmsetup	81
bcmsysupgrade	81
bcmuname	82
bcmupdate	83
UpgradeLink	84

---

## A TROUBLESHOOTING

Getting Help	85
Man Pages	85
HTML Help	85
General Troubleshooting Error Messages	85
Return Codes from bcmdiagnose	86
Hardware-Related Messages	87
Installation Troubleshooting Messages	87
Installing the Enterprise OS Upgrade Management Utilities	87
Determining Connectivity	88
Validating the SNMP Service Configuration	88

Testing the NMS/ TFTP Configuration	89
Creating an Upgrade File	89
Uploading an Upgrade File	90
Downloading an Upgrade File	91

---

## **B CHOOSING A SOFTWARE PACKAGE**

NETBuilder II Upgrade Migration Path	93
SuperStack II NETBuilder Upgrade Migration Path	96
SuperStack II NETBuilder SI Upgrade Migration Path	98
OfficeConnect NETBuilder Upgrade Migration Path	99
PathBuilder Upgrade Migration Path	101

---

## **C MOUNTING THE CD-ROM ON A UNIX PLATFORM**

Mounting the CD-ROM on Solaris 2.5.x	103
Mounting a Local CD-ROM Drive	103
Mounting from a Remote CD-ROM Drive	103
Mounting the CD-ROM on HP-UX 10.x	105
Mounting from a Local CD-ROM Drive	105
Mounting from a Remote CD-ROM Drive	105
Mounting the CD-ROM on IBM AIX 4.1.x Through 4.2.x	106
Mounting from a Local CD-ROM Drive	106
Mounting from a Remote CD-ROM Drive	106
Unmounting the CD-ROM	107

---

## **D TECHNICAL SUPPORT**

Online Technical Services	109
World Wide Web Site	109
3Com Knowledgebase Web Services	109
3Com FTP Site	109
3Com Bulletin Board Service	110
Access by Analog Modem	110
Access by Digital Modem	110
3Com Facts Automated Fax Service	110
Support from Your Network Supplier	110
Support from 3Com	111
Returning Products for Repair	112

---

## **GLOSSARY**

---

## **INDEX**

---

## **3COM CORPORATION LIMITED WARRANTY**

---

# ABOUT THIS GUIDE

This guide describes how to upgrade your NETBuilder® bridge/router to Enterprise OS software version 11.3. This guide also describes how to upgrade your PathBuilder™ S5xx series switch to Enterprise OS software version 11.3.

You can also use this guide to upgrade your NETBuilder bridge/router to previous software versions (8.0 through 11.2) by specifying the correct options.

You can upgrade your bridge/router from software version 8.0 through 11.2 to any software version after 8.0 through 11.3 on the following platforms:

- NETBuilder II® bridge/router with DPE
- NETBuilder II bridge/router with CEC — The CEC module is not supported after software version 10.1, but you can use the 11.2 utilities to upgrade a CEC module to a DPE module, or to upgrade the CEC module to software version 10.1 or earlier.
- SuperStack® II NETBuilder SI bridge/router
- SuperStack II NETBuilder Token Ring bridge/router
- OfficeConnect® NETBuilder bridge/router

You can upgrade your PathBuilder S5xx series switch to Enterprise OS software version 11.3 from version 11.1.1 and version 11.2.

This guide also describes how to complete an image-only upgrade for patches, new packages, or software recovery. It also describes how to backup and restore software on a network management station.



*See the Enterprise OS Software Version 11.3 Release Notes for any changes or additions to the information in this guide.*

---


## Conventions

Table 1 and Table 2 list conventions that are used throughout this guide.

**Table 1** Notice Icons

Icon	Notice Type	Description
	Information note	Important features or instructions
	Caution	Information to alert you to potential damage to a program, system, or device
	Warning	Information to alert you to potential personal injury

**Table 2** Text Conventions

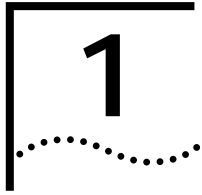
Convention	Description
Syntax	<p>The word "syntax" means you must evaluate the syntax provided and supply the appropriate values. Placeholders for values you must supply appear in angle brackets. Example:</p> <p>Enable RIPIP using:</p> <pre>SETDefault !&lt;port&gt; -RIPIP CONTrol = Listen</pre> <p>In this example, you must supply a port number for &lt;port&gt;.</p>
Commands	<p>The word "command" means you must enter the command exactly as shown in text and press the Return or Enter key. Example:</p> <p>To remove the IP address, enter:</p> <pre>SETDefault !0 -IP NETaddr = 0.0.0.0</pre> <p> This guide always gives the full form of a command in uppercase and lowercase letters. However, you can abbreviate commands by entering only the uppercase letters and the appropriate value. Commands are not case-sensitive.</p>
Screen displays	This typeface represents information as it appears on the screen.
The words "enter" and "type"	When you see the word "enter" in this guide, you must type something, and then press the Return or Enter key. Do not press the Return or Enter key when an instruction simply says "type."
[Key] names	<p>Key names appear in text in one of two ways:</p> <ul style="list-style-type: none"> <li>■ Referred to by their labels, such as "the Return key" or "the Escape key"</li> <li>■ Written with brackets, such as [Return] or [Esc].</li> </ul> <p>If you must press two or more keys simultaneously, the key names are linked with a plus sign (+). Example:</p> <p>Press [Ctrl]+[Alt]+[Del].</p>
<i>Menu commands and buttons</i>	<p>Menu commands or button names appear in italics. Example:</p> <p>From the <i>Help</i> menu, select <i>Contents</i>.</p>
Words in <i>italicized</i> type	Italics emphasize a point or denote new terms at the place where they are defined in the text.

**Year 2000 Compliance**

For information on Year 2000 compliance and 3Com products, visit the 3Com Year 2000 Web page:

<http://www.3com.com/products/yr2000.html>





# OVERVIEW

This chapter provides an overview of the upgrade tools, process, and support limitations.

---

## Upgrade Tools and Process

*Definition of network management station*

The upgrade procedures in this guide use the Enterprise OS Upgrade Management Utilities on a UNIX or Windows network management station (NMS).

An NMS is a UNIX or Windows system that has a TFTP/FTP server running in addition to software, such as the Enterprise OS Upgrade Management Utilities, to manage your network. For Windows, the utilities include the 3Com® TFTP/FTP server.

If you are upgrading multiple bridge/routers, you can install and use the Network Admin Tools utilities in the Transcend® Enterprise Manager or Transcend Network Control Services, available separately. See the Transcend user guide for more information.

You can use the NETBuilder Upgrade Link application that comes with the utilities provides an easy to use graphical user interface (GUI) to upgrade one or more bridge/routers. Or you can access the utilities directly using the command-line.



*When upgrading multiple bridge/routers simultaneously using command line utilities, the topology of the network should be considered and the bridge/routers should be upgraded in a sequence that will not disrupt the network.*

If you are performing an image-only upgrade, you can use the utilities or applications, or you can copy the software manually using the Enterprise OS user interface.

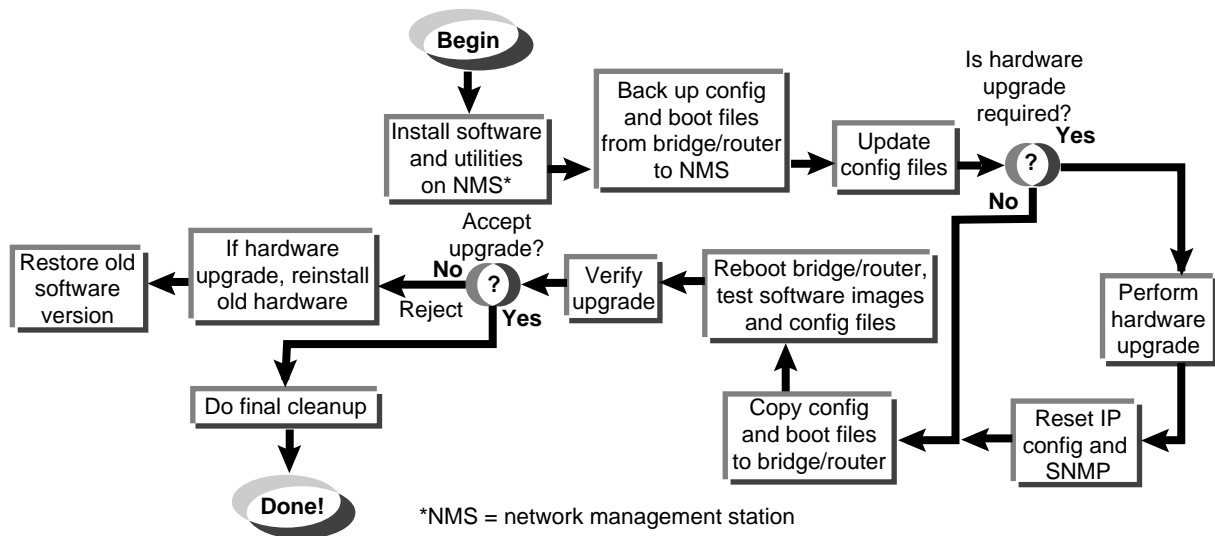
The utilities are shipped with your software package on a CD-ROM and must be installed on an NMS on the same network as the bridge/router. You can also download the utilities from the 3Com web, FTP, or BBS sites.

The utilities run on the following operating systems:

- Solaris 2.x
- HP-UX 10.x
- IBM AIX 4.x or later
- Windows NT 4.x
- Windows 95/98

Figure 1 shows the typical upgrade process.

**Figure 1** Upgrade Process



### How the Utilities Work

The software on your bridge/router or switch consists of a bootable image file and configuration files that store all your settings. The Enterprise OS Upgrade Management Utilities update all your software files after copying them to a UNIX or Windows NMS. Because the upgrade occurs on a copy of the files on the NMS, the bridge/router remains operational during the upgrade. The utilities then copy the new image and updated files back to the bridge/router.

### Primary, Secondary, and Test Boot Sources

The NETBuilder bridge/router or PathBuilder switch boots from a default directory, called the primary boot source, which can be set using the SysconF command in the Enterprise OS user interface. If you have more than one set of boot images, you can specify a backup directory, called the secondary boot source. There is also a test boot source, which the utilities use to test a new upgrade before making it the primary boot source. Because the boot sources are only pointers to particular directories, the utilities can dynamically change the boot sources without having to move any files.

### Automatic or Manual Recovery

If your switch or bridge/router has enough flash memory, you can have both sets of software: the old version and the new version. After a successful test boot with the new software, the primary boot source is changed to the new version. If the test boot is not successful, the system automatically reboots with the old version. Dual-image support is described in the procedures for *automatic recovery*.

If you have only enough flash memory for the new version, you can still recover the old version from the NMS using the utilities. Single-image support is described in the procedures for *manual recovery*.

For memory requirements for automatic or manual recovery, see Chapter 3.

---

**Rules and Support Limitations**

Before planning your upgrade, refer to the following rules and support limitations:

- The utilities do not support Remote Boot and Configuration Services (RBCS) or network booting.
- Upgrades from NETBuilder bridge/routers running version 7.x, or earlier, are not supported.
- You cannot upgrade to a different platform. For example, you can only upgrade an OfficeConnect® bridge/router to an OfficeConnect bridge/router. You cannot upgrade a SuperStack® II NETBuilder bridge/router to a SuperStack II NETBuilder SI bridge/router. The only exception is an upgrade from a NETBuilder II® CEC module to a DPE module.

---

**Take Time to Plan**

Because networks today have become increasingly complex, upgrading your network requires a systematic approach. 3Com recommends that you plan your upgrade carefully before implementing it. See Chapter 3 to plan your upgrade.



# 2

## INSTALLING THE UTILITIES ON A NETWORK MANAGEMENT STATION

Before you start the upgrade process, you must install the Enterprise OS Upgrade Management Utilities on a network management station (NMS). If you are using Transcend Enterprise Manager or Transcend Network Control Services, which has the utilities bundled, you should install the latest utilities to take advantage of new features and version support.

This chapter describes how to install the Enterprise OS Upgrade Management Utilities on the following platforms:

- Solaris 2.x
- HP-UX 10.x
- IBM AIX 4.x or later
- Windows NT 4.x
- Windows 95/98

---

### Installing the Utilities on a Windows System

You can install the utilities from a CD-ROM or from utilities that you have downloaded to your hard disk. To install the utilities on a Windows system, follow these steps:

- 1 If you have installed utilities before or have Transcend, check the version by entering:

**bcmdiagnose**

If the version is earlier than 11.3, continue to the next step. If you already have 11.3, you do not need to reinstall the utilities.

- 2 Change to the utilities directory.

- If you are using the CD-ROM:

- a Insert the CD-ROM into the CD-ROM drive.
- b Open a command window.
- c Change to the CD-ROM directory.

For example, if E is the drive letter for the CD-ROM, enter:

**E:**

- 3 If you download the utilities to your hard disk (see Chapter 8 for information about downloading the utilities):

- a Decompress the utilities.
- b Open a command window.
- c Change to the utilities directory using:

`<drive>:\<path>\`

- 4 Run the setup program for Windows:
  - To install all packages, including the utilities and package definitions for use with Transcend if required, use:
 

```
bcmsetup <drive>: all
```

 Where <drive> is the drive you want to install the utilities on.
 

The packages install in the default directory \usr\3Com\bcm\, and the following paths are added to the autoexec.bat file:

```
<drive>:\usr\3com\bcm\bin\
```

```
<drive>:\usr\3com\common\bin\
```
- 5 Reboot your system to use the path, which is required for all utility commands. Or, if you do not want to reboot, you can enter the path manually at the command prompt:
 

```
<drive>:\usr\3com\common\data\profile
```
- 6 Use the bcmdiagnose utility to ensure that your installation is correct by entering:
 

```
bcmdiagnose
```

## Installing the Utilities on a UNIX System

You can install the utilities from a CD-ROM or from utilities that you have downloaded to your hard disk.

### Preparing for the Installation

Before installing the utilities, verify the following items:

- Your NMS is running one of the supported operating systems. Check the operating system you are running by entering:

```
uname -a
```



*The version message may refer to Solaris 2.5 as SunOS 5.5.*

- You need to upgrade utilities you have already installed. The utilities come bundled with Transcend. To check the version, enter:
 

```
bcmdiagnose
```
- Your root password on the NMS (UNIX only).
- Your NMS is running a TFTP/FTP server.

**Procedure** To install the utilities on a UNIX system, follow these steps:

- 1 Log on as root.
- 2 Change to the utilities directory.
  - If you are using the CD-ROM:
    - a Mount the CD-ROM.
 

For more information on mounting instructions for each supported UNIX operating system, see Appendix C.
    - b Change to the appropriate directory on the CD-ROM for your operating system using:
 

```
cd /<cd-rom path>/<os>
```

 Where <os> is the directory for your operating system:

**Table 1** UNIX Directories

Operating System	Directory Name
Solaris 2.5.x	sunos5
HP-UX 10.x	HP_UX
IBM AIX 4.1.x, 4.2x	aix

- If you download the utilities to your hard disk (see Chapter 8 for information about downloading the utilities):

**a** Decompress the utilities.

**b** Change to the utilities directory on your hard disk using:

```
cd /<path>/
```

**3** Run the setup program.

- To install all packages from the CD-ROM, including the utilities and package definitions for use with Transcend, enter:

```
./bcmsetup all
```

- To install only the upgrade utilities, enter:

```
./bcmsetup bcm
```

The utilities are installed in the default directory `/usr/3Com/bcm/`.

If you are working in an HP-UX operating system, the `bcmsetup` command must be uppercase, that is, `BCMSETUP`. The options that follow remain lowercase.

**4** Complete the following step for your UNIX shell:

- For a C-shell installation, add the contents of the following file to the `.cshrc` file for each user you want to have access to the utilities, including root:

```
/usr/3Com/common/data/.login-bcm
```

Or you can enter the path after every logon:

```
source /usr/3Com/common/data/.login-bcm
```

- For a Bourne shell installation, add the contents of the following file to the `.profile` file for each user you want to have access to the utilities, including root:

```
/usr/3Com/common/data/.profile-bcm
```

Or you can enter the path after every logon:

```
./usr/3Com/common/data/.profile-bcm
```

**5** Return to normal privilege by entering:

```
exit
```

**6** Use the `bcmdiagnose` utility to ensure that your installation is correct by entering:

```
bcmdiagnose
```

**Setting up for Auto  
Startup**

On a UNIX NMS, after you have completed the previous setup procedures you need to set up the BootP server.

To set up the BootP server, enter:

```
bcmsteup -bootp
```

*This command does not need to be used when you are operating on a Windows 95/98/NT-based NMS.*



# 3

## PLANNING AND PREPARING THE UPGRADE

This chapter describes setting up a file transfer method, choosing automatic or manual recovery, checking the required memory for each package, including instructions for checking the memory, and provides planning tables to copy and fill out for each bridge/router.

If you are upgrading multiple bridge/routers using Transcend Enterprise Manager or Transcend Network Control Services, or are using the command-line utilities, you should make sure each bridge/router has enough flash memory and DRAM for the software package you have chosen. The Upgrade Link application automatically checks the memory of the bridge/router.

For a list of all software packages and the recommended upgrade path for your version, see Appendix B.

---

### Setting Up a File Transfer Method

You can choose to transfer files using FTP or TFTP.

#### Setting up for TFTP File Transfers

To use TFTP, you need to set up your NMS in preparation for TFTP file transfers.

Make sure your TFTP server is running. On a Windows workstation, 3Com's 3CServer is shipped along with the utilities. Upgrade Link launches 3CServer during start up.

Specify the `-tftp` flag in all command line utilities which use file transfers (`bcmsysupgrade`, `bcmbbackup`, `bcmrestore`) if you want to use TFTP file transfer. For example, to specify TFTP file transfer use:

```
bcmsysupgrade -s:from_nb -tftp <device>
```



*If neither flag is used, TFTP is used by default for software release 11.0 and lower, but FTP is used by default for software release 11.1 and higher. If the `-ftp` flag is specified on a bridge/router running software version 11.0 or lower, the FTP password is overwritten with the following text string:*

```
****
```

#### Setting up for FTP File Transfers

To use FTP, you need to set up your NMS in preparation for FTP file transfers.



*For Upgrade Link, the user name and password is specified in the Setting Page, as shown on page 23.*

On a UNIX NMS, follow these steps:

- 1 Create a user on your system with /tftpboot as the home directory.
- 2 When using the upgrade utilities via the command line or the Transcend Upgrade Manager, specify this user name and password in the BCMFTPUSER and BCMFTPPASS environment variables.

Specify the -ftp flag in all command line utilities that use file transfers (bcmsysupgrade, bcmbackup, bcmrestore) if you want to use FTP file transfer. For example, to specify FTP file transfer use:

```
bcmsysupgrade -s:from_nb -ftp <device>
```



*If no flag is used, TFTP is used by default for software release 11.0 and lower, but FTP is used by default for software release 11.1 and higher. If the -ftp flag is specified on a bridge/router running software version 11.0 or lower, the FTP password is overwritten with the following text string:*

```
****
```

On a Windows NMS, follow these steps:

- 1 Create a user in 3Com's 3CServer FTP settings.
- 2 When using the upgrade utilities via command line or the Transcend Upgrade Manager, specify the ftp user name and password in the BCMFTPUSER and BCMFTPPASS environment variables.

You can specify the -ftp flag in the utilities (bcmsysupgrade, bcmbackup, bcmrestore) if you want to use FTP file transfer.



*If no flag is used, TFTP is used by default for software release 11.0 and lower, but FTP is used by default for software release 11.1 and higher. If the -ftp flag is specified on a bridge/router running software version 11.0 or lower, the FTP password is overwritten with the following text string:*

```
****
```

## Choosing Automatic Recovery or Manual Recovery

If you have enough flash memory for dual-image support, complete your upgrade using automatic recovery. If you have only enough memory for single-image support, complete the upgrade using manual recovery. The following sections describe the difference between automatic and manual recovery and the memory requirements for each platform.

### Automatic Recovery

The default upgrade procedure uses automatic recovery. After backing up the current software to the network management station (NMS), the new software is copied into a test directory while the current software remains in the primary directory. If you accept the upgrade after booting from the test directory, the new software becomes the primary boot source, and the old software becomes the secondary boot source.

If you are upgrading your hardware as well as the software, the procedure for automatic recovery saves the software package that was originally on the new hardware as the secondary boot source.

**Manual Recovery** An upgrade with manual recovery (using the -m option with the bcmsysupgrade utility) formats the flash memory after backing up the current software, then copies the upgraded files to the bridge/router. If the upgrade is not successful, you must restore the software from the NMS.

If you are upgrading your hardware as well as the software, you can easily recover your old hardware if the upgrade is not successful. However, because you erased the flash memory on the new hardware, you will need to restore the original software from the NMS if you want to return the new hardware to its original state.

Table 2 lists the memory requirements for each software package on the platform you are upgrading to. If you are upgrading to an earlier version of software, see the guides that came with that version for the memory requirements.

**Table 2** Version 11.2 Software Packages

Software Package	Model	DRAM Required	Flash Memory Required for:	
			Automatic Recovery	Manual Recovery
<b>NETBuilder II with DPE:</b>			(The standard flash memory card from 3Com is 20 MB)	
(AC) - APPN/Connection Services	DPE	All DPE modules ship with enough DRAM for all software packages.	40 MB	20 MB
(DW) - Multiprotocol Router	DPE		40 MB	20 MB
(DE) - Multiprotocol Router with 56-bit Encryption	DPE		40 MB	20 MB
(DS) - Multiprotocol Router with 128-bit Encryption	DPE		40 MB	20 MB
<b>SuperStack II NETBuilder Token Ring:</b>				
(TE) - Multiprotocol Router with Encryption	327, 527	12 MB	8 MB	4 MB
<b>SuperStack II NETBuilder SI:</b>				
(NW) - IP/IPX/AT Router	432, 442, 452, 462 532, 542, 552, 562	All SuperStack II NETBuilder SI bridge/routers ship with enough DRAM (16 MB) and flash memory (8 MB) for automatic recovery.		
(BF) - Boundary Router	433, 443, 453, 463 533, 543, 553, 563			
(CF) - Multiprotocol Router	437, 447, 457, 467 537, 547, 557, 567			
(AX) - APPN/Connection Services	438, 448, 458, 468 538, 548, 558, 568			
(NE) - IP/IPX/AT Router with 56-bit Encryption	432, 442, 452, 462 532, 542, 552, 562			
(NS) - IP/IPX/AT Router with 128-bit Encryption	432, 442, 452, 462 532, 542, 552, 562			
(CE) - Multiprotocol Router with 56-bit Encryption	437, 447, 457, 467 537, 547, 557, 567			
(CS) Multiprotocol Router with 128-bit Encryption	437, 447, 457, 467 537, 547, 557, 567			

**Table 2** Version 11.2 Software Packages (continued)

Software Package	Model	DRAM Required	Flash Memory Required for:	
			Automatic Recovery	Manual Recovery
<b>OfficeConnect NETBuilder:</b>				
(FD) - FRAD	120	8 MB	4 MB	4 MB
(NW) - IP/IPX/AT Router	112, 122, 132, 142	8 MB	4 MB	4 MB for 132 2 MB for all others
(BF) - Boundary Router	113, 123, 143	8 MB	8 MB	4 MB
(OF) - Multiprotocol Router	117, 127, 137, 147	12 MB	8 MB	4 MB
(AF) - APPN	116, 126, 146	12 MB	8 MB	4 MB
(NE) - IP/IPX/AT Router with 56-bit Encryption	112, 122, 132, 142	8 MB	4 MB	4 MB for 132 2 MB for all others
(NS) - IP/IPX/AT Router with 128-bit Encryption	112, 122, 132, 142	8 MB	4 MB	4 MB for 132 2 MB for all others
(VE) - VPN IP/IPX/AT Router with Quick Step VPN and 56-bit Encryption	115, 125, 135, 145	8 MB	8 MB	4 MB
(OE) - Multiprotocol Router with 56-bit Encryption	117, 127, 137, 147	12 MB	8 MB	4 MB
(OS) - Multiprotocol Router with 128-bit Encryption	117, 127, 137, 147	12 MB	8 MB	4 MB
(VW)- Multiprotocol Router	147	12 MB	8 MB	4MB
<b>PathBuilder S5xx Switch</b>				
(PW) - Multiprotocol Router	S500, S580, S593, S594	160 MB	16 MB	4 MB
(PE) - Multiprotocol Router with 56-bit Encryption	S500, S580, S593, S594	160 MB	16 MB	4 MB
(PS) - Multiprotocol Router with 128-bit Encryption	S500, S580, S593, S594	160 MB	16 MB	4 MB

**Checking DRAM**

To check how much DRAM you have installed on the switch or bridge/router, on the NMS use:

```
bcmuname -M <device>
```

Where <device> is the IP address or hostname of the switch or bridge/router.

**Checking Flash Memory**

To check how much flash memory you have installed on the switch or bridge/router, on the NMS use:

```
bcmdf <device>[:<drive:>]
```

Where <device> is the hostname or the IP address of the switch or bridge/router.

Specify drive A for NETBuilder II bridge/routers or PathBuilder switches.

Do not specify a drive for SuperStack II or OfficeConnect bridge/routers.

---

## Checking the Software Version

To display the current software version and package you are running, use the `bcmuname` utility on the NMS:

```
bcmuname -R <device>
```

Where `<device>` is the IP address or hostname of the bridge/router.

To display the current software version and package using the Enterprise OS user interface, enter:

```
SHow -SYS VERSIon
```

---

## Planning Tables

Photocopy the following planning tables, and fill out background information about your bridge/routers before starting the upgrade process. The NETBuilder II table is on page 22. The SuperStack II NETBuilder, SuperStack II NETBuilder SI, OfficeConnect NETBuilder, and PathBuilder switch table is on page 23.

If you are upgrading both software and hardware, write down the information for the new hardware. For example, if you are replacing a CEC 20 with a DPE module, write down the information for the DPE module.

NETBuilder II Planning Table

		Check each appropriate option to use with the command-line utilities:								
IP Address or Name	Flash Memory	Enough Flash Memory for Automatic Recovery?	Enough Flash Memory for Manual Recovery?	CEC Only: Firmware Version (pre-10.3 upgrade only)	Current Software Version and Two-Letter Code	New Software Version and Two-Letter Code	Manual Recovery?	Hardware Upgrade?	Upgrading to a Software Version Other than 11.0?	Upgrading Unlike Packages?
10.1.3.24	20 MB	X	X	n/a	11.0 CF	11.1 CF	<input type="checkbox"/> -m	<input type="checkbox"/> -new_hw	<input type="checkbox"/> -V: <version you are upgrading to>	<input type="checkbox"/> -k: <package you are upgrading to>
							<input type="checkbox"/> -m	<input type="checkbox"/> -new_hw	<input type="checkbox"/> -V: <version you are upgrading to>	<input type="checkbox"/> -k: <package you are upgrading to>
							<input type="checkbox"/> -m	<input type="checkbox"/> -new_hw	<input type="checkbox"/> -V: <version you are upgrading to>	<input type="checkbox"/> -k: <package you are upgrading to>
							<input type="checkbox"/> -m	<input type="checkbox"/> -new_hw	<input type="checkbox"/> -V: <version you are upgrading to>	<input type="checkbox"/> -k: <package you are upgrading to>
							<input type="checkbox"/> -m	<input type="checkbox"/> -new_hw	<input type="checkbox"/> -V: <version you are upgrading to>	<input type="checkbox"/> -k: <package you are upgrading to>
							<input type="checkbox"/> -m	<input type="checkbox"/> -new_hw	<input type="checkbox"/> -V: <version you are upgrading to>	<input type="checkbox"/> -k: <package you are upgrading to>
							<input type="checkbox"/> -m	<input type="checkbox"/> -new_hw	<input type="checkbox"/> -V: <version you are upgrading to>	<input type="checkbox"/> -k: <package you are upgrading to>
							<input type="checkbox"/> -m	<input type="checkbox"/> -new_hw	<input type="checkbox"/> -V: <version you are upgrading to>	<input type="checkbox"/> -k: <package you are upgrading to>
							<input type="checkbox"/> -m	<input type="checkbox"/> -new_hw	<input type="checkbox"/> -V: <version you are upgrading to>	<input type="checkbox"/> -k: <package you are upgrading to>
							<input type="checkbox"/> -m	<input type="checkbox"/> -new_hw	<input type="checkbox"/> -V: <version you are upgrading to>	<input type="checkbox"/> -k: <package you are upgrading to>
							<input type="checkbox"/> -m	<input type="checkbox"/> -new_hw	<input type="checkbox"/> -V: <version you are upgrading to>	<input type="checkbox"/> -k: <package you are upgrading to>

SuperStack II NETBuilder, SuperStack II NETBuilder SI, and OfficeConnect NETBuilder Planning Table

IP Address or Name	Flash Memory	Enough Flash Memory for Automatic Recovery?	Enough Flash Memory for Manual Recovery?	DRAM	Current Software Version and Two-Letter Code	New Software Version and Two-Letter Code	Check each appropriate option to use with the command-line utilities:			
10.1.3.24	8 MB	X	X	8 MB	9.3 BF	11.0 BF	Manual Recovery?	Hardware Upgrade?	Upgrading to a Software Version Other than 11.0?	Upgrading Unlike Packages?
							<input type="checkbox"/> -m	<input type="checkbox"/> -new_hw	<input type="checkbox"/> -V:<version you are upgrading to>	<input type="checkbox"/> -k:<package you are upgrading to>
							<input type="checkbox"/> -m	<input type="checkbox"/> -new_hw	<input type="checkbox"/> -V:<version you are upgrading to>	<input type="checkbox"/> -k:<package you are upgrading to>
							<input type="checkbox"/> -m	<input type="checkbox"/> -new_hw	<input type="checkbox"/> -V:<version you are upgrading to>	<input type="checkbox"/> -k:<package you are upgrading to>
							<input type="checkbox"/> -m	<input type="checkbox"/> -new_hw	<input type="checkbox"/> -V:<version you are upgrading to>	<input type="checkbox"/> -k:<package you are upgrading to>
							<input type="checkbox"/> -m	<input type="checkbox"/> -new_hw	<input type="checkbox"/> -V:<version you are upgrading to>	<input type="checkbox"/> -k:<package you are upgrading to>
							<input type="checkbox"/> -m	<input type="checkbox"/> -new_hw	<input type="checkbox"/> -V:<version you are upgrading to>	<input type="checkbox"/> -k:<package you are upgrading to>
							<input type="checkbox"/> -m	<input type="checkbox"/> -new_hw	<input type="checkbox"/> -V:<version you are upgrading to>	<input type="checkbox"/> -k:<package you are upgrading to>
							<input type="checkbox"/> -m	<input type="checkbox"/> -new_hw	<input type="checkbox"/> -V:<version you are upgrading to>	<input type="checkbox"/> -k:<package you are upgrading to>
							<input type="checkbox"/> -m	<input type="checkbox"/> -new_hw	<input type="checkbox"/> -V:<version you are upgrading to>	<input type="checkbox"/> -k:<package you are upgrading to>
							<input type="checkbox"/> -m	<input type="checkbox"/> -new_hw	<input type="checkbox"/> -V:<version you are upgrading to>	<input type="checkbox"/> -k:<package you are upgrading to>
							<input type="checkbox"/> -m	<input type="checkbox"/> -new_hw	<input type="checkbox"/> -V:<version you are upgrading to>	<input type="checkbox"/> -k:<package you are upgrading to>





# 4

## UPGRADING USING THE NETBUILDER UPGRADE LINK APPLICATION

This chapter describes how to upgrade the software on a NETBuilder bridge/router or a PathBuilder switch using the Upgrade Link application. Upgrade Link is an easy to use GUI for the upgrade utilities that runs in a web server. Access to the server is available via a web browser. If you are upgrading multiple bridge/routers, you should use Transcend Enterprise Manager or Transcend Network Control Services instead. Contact your network supplier for more information about Transcend. Or if you want to write scripts, you can use the command-line utilities as described in Chapter 5. Use the command-line utilities if you do not have a web browser on your network management station (NMS).

An NMS is a UNIX or Windows system that has a FTP/TFTP server running in addition to software, such as the Upgrade Management Utilities, to manage your network. For Windows, the utilities include the 3Com FTP/TFTP server called 3CServer.

---

### Preparing for the Upgrade

Before upgrading your system, confirm the following items:

- You have installed the utilities according to Chapter 2.
- You have set the path for the utilities (UNIX only). If you have not set the path, complete the following step for your UNIX shell:
  - For a C-shell installation, add the contents of the following file to the `.cshrc` file for each user you want to have access to the utilities, including root:  
`/usr/3Com/common/data/.login-bcm`  
Or you can enter the path after every logon:  
**source /usr/3Com/common/data/.login-bcm**
  - For a Bourne shell installation, add the contents of the following file to the `.profile` file for each user you want to have access to the utilities, including root:  
`/usr/3Com/common/data/.profile-bcm`  
Or you can enter the path after every logon:  
**. /usr/3Com/common/data/.profile-bcm**
- All configuration files are in the same directory as the boot image.
- You have booted your bridge/router from the primary boot source.
- You have a web browser installed with Java support, such as Netscape Navigator 4.5 or Internet Explorer 4.x, and you have it in your path (UNIX).



**CAUTION:** *Only one client at a time should access the Upgrade Link Server.*

- There is sufficient disk space on the NMS for the amount of software you are installing.

Minimal disk storage requirements depend on the number of different software versions that are stored on the disk drive. Calculate:

- 6 MB for each version of the NETBuilder II bridge/router or PathBuilder switch image
- 4 MB for each version of the SuperStack II, SuperStack II SI, or OfficeConnect NETBuilder bridge/router image

While you must purchase one copy of software for each device, you only need to install one copy of a version of software on the NMS.

## Running Upgrade Link Locally

Upgrade Link contains its own web server. Client access to the web server is available locally or remotely via a web browser. Running the Upgrade Link application locally means that the web browser and the web server are running on the same NMS.

To run Upgrade Link locally on a UNIX NMS, use:

```
UpgradeLink [-NoAuthentication] [-NoSecurity]
```

This command starts the NETBuilder Upgrade Server and the default browser. Two command options are available.

- When `NoAuthentication` is specified, Upgrade Link will allow a remote client to access the server without user authentication, see “Settings Page” for a description of the available settings.
- When you specify `NoSecurity`, Upgrade Link starts and will accept connections from all IP addresses. Otherwise, only those client IP addresses listed in the `/usr/3Com/common/data/allow` file will be accepted by Upgrade Link.

For security, an administrator can enter the IP addresses of only those clients who will be allowed to upgrade devices. An allow file is an ASCII text file containing the IP addresses of clients to upgrade devices. The allow file looks like the following:

```
129.213.100.151
129.213.100.152
139.87.172.100
```

To run Upgrade Link locally on a Windows NMS, click the *Start* menu, then choose *Programs*⇒*Remote Upgrade Utilities*⇒*Upgrade Link*.

Your default browser is launched. On Windows, the 3Com FTP/TFTP server is also launched.



*When you exit Upgrade Link, you will also exit the browser and, for Windows, the FTP/TFTP server.*

## Running Upgrade Link Remotely

You can access the NETBuilder Upgrade Server remotely using a browser.

- Start the NETBuilder Upgrade Server on the NMS using:

```
bcnmbus <port> [-NoSecurity | -NoAuthentication]
```

where port is the TCP socket on which the client can communicate with the server. On UNIX systems, you can add this command to cron. On Windows 95/98/NT systems, this command can be run as a console application.

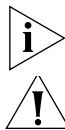
When NoSecurity is specified, the bcmnbrus command allows connections from all IP addresses. Otherwise, only those client IP addresses listed in the /usr/3Com/common/data/allow file will be accepted by Upgrade Link.

For security, an administrator can enter the IP addresses of only those clients who will be allowed to upgrade devices. An allow file is an ASCII text file containing the IP addresses of clients to upgrade devices. The allowed file looks like the following:

```
129.213.100.151
129.213.100.152
139.87.172.100
```

When NoAuthentication is specified, the bcmnbrus command allows the remote client to access the server without user authentication, see "Settings Page" on page 28 for a description of the available settings.

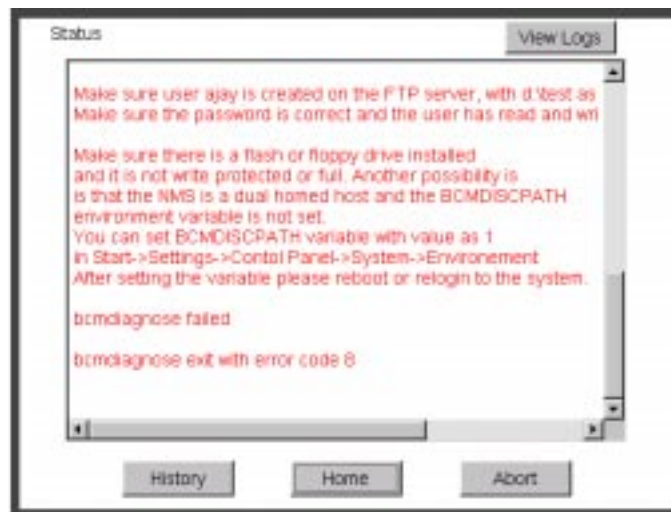
- Then, to access Upgrade Link from a web browser, enter the following URL:  
http://<server\_nam>:<port>/



*Do not resize the browser window while the Upgrade Link application is running.*  
**CAUTION:** Only one client at a time should access the Upgrade Link Server.

## Status and Settings Pages

After each procedure described in this section, the Status or Settings page appears. Table 3 describes the buttons on the bottom of the Status page.



**Table 3** Status page Buttons

Button	Description
History	Shows the last 20 successful operations performed on the bridge/router or switch.
Home	Returns to the Console page.

**Table 3** Status page Buttons (continued)

Button	Description
Abort	Exits Upgrade Link and aborts the process. Some processes may need to be completed even after clicking <i>Abort</i> . Upgrade Link displays a message about any ongoing processes.
View Logs	Opens a page listing the logs available for viewing.

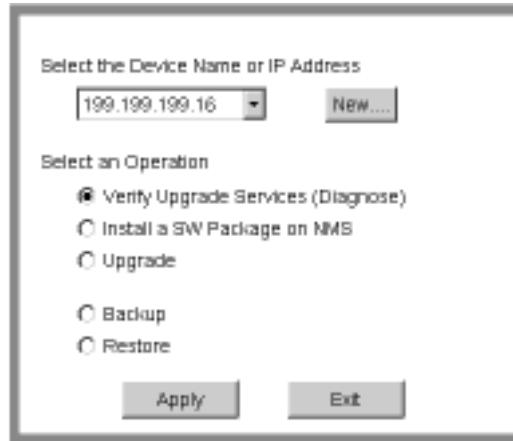
**Settings Page** The Setting Page lets you establish basic settings.

- You can choose the method of file transfers. TFTP is used by default for NETBuilder bridge/router software release 11.0 and lower while FTP is used by default for NETBuilder bridge/router software release 11.1 and higher and Enterprise OS version 11.3.
- Enter an SNMP read/write string and the NETBuilder bridge/router or PathBuilder switch user name and password.
- If -noAuthentication was not specified in Upgrade Link or on the bcmnbrus command line, authentication will be used and you must enter the NETBuilder or PathBuilder username and password.
- If -noAuthentication was specified in Upgrade Link or on the bcmnbrus command line, no authentication is required and any user name and password entries are ignored.
- If using FTP, enter the FTP client user name and password.

## Verifying for Upgrading

Before upgrading, run the diagnostic utility in Upgrade Link to verify connectivity to the switch or bridge/router by following these steps:

- 1 Choose a switch or bridge/router from the pop-up list in the Console page, or click *New* to enter the IP address or hostname. The pop-up list contains devices that you have upgraded or backed-up before.



- 2 Select *Verify Upgrade Services (Diagnose)* and click *Apply*.

The Settings Page appears. Select the appropriate settings as described in on "Settings Page" on page 28 and click *OK* to close that window.

The Status page appears showing the results of the diagnostic tests.

- 3 If the Status page shows a failure, check the SNMP read/write community string and FTP/TFTP server settings.

If the Status page shows a success, click *Home* to continue with the upgrade and return to the Console page.

## Installing Software on the NMS

Upgrade Link installs the software on the NMS in the following directory:

Windows:

```
|%tftpboot%\image\

```

UNIX:

```
/tftpboot/image/<platform>/SW/FW/<version>/<pkg>
```

**For UNIX**, if there is not enough space on the disk, you can link /tftpboot to another disk. For example, to link /tftpboot to the usr directory, enter:

```
ln -s /usr/tftpboot /tftpboot/
```



*The utilities work only with the default directory names and structures.*

*Values*

tftpboot	For UNIX: Directory specified in inetd or tftpd for tftpd files.
%tftpboot%	For Windows (using the default 3Com TFTP server): Directory specified in the 3Server configuration.
<platform>	NETBuilder II with CEC Module: NBII NETBuilder II with DPE Module: NBDPE SuperStack II NETBuilder SI bridge/router: NBSI SuperStack II NETBuilder Ethernet bridge/router: NBRO SuperStack II NETBuilder Token Ring bridge/router: NBR2T SuperStack II NETBuilder Ethernet/ISDN bridge/router: NBRI SuperStack II NETBuilder Token Ring/ISDN bridge/router: NBR2TI OfficeConnect NETBuilder bridge/router: NBOCF PathBuilder S5xx switch: NBPB500
<package>	Two letter designator shown on the CD-ROM label.
[SW   FW]	The software or firmware directory.
<version>	Software version 9.0 through 11.3.

**Procedure** To install the new software on the NMS, follow these steps:



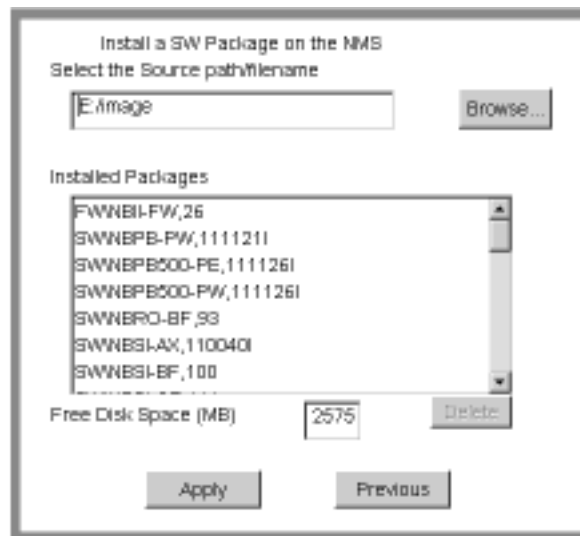
*You must be logged in as root for this procedure (UNIX).*

- 1 You can install the software from a CD-ROM, a tar archive, or a boot image (image-only upgrade). If you are installing from a CD-ROM, mount the CD-ROM on the NMS.

See Appendix C for information on how to mount the CD-ROM on a UNIX system.

- 2 For UNIX, log in as root.
- 3 Run Upgrade Link if you have not already done so.
- 4 Select *Install a SW Package on NMS* from the Console page.

- 5 Click *Apply*.  
The Install page appears.



- 6 Enter the path for the software, or click *Browse* to use a file browse page.
  - For UNIX CD-ROM, use the following path:  
cdrom/<mount path>/image/
  - For Windows CD-ROM, use the following path:  
<CD-ROM drive>:\image\
  - For Archive, enter the entire path including the filename.
  - For an FTP site, enter the full URL
- 7 Click *Apply* to install the software.  
The Status page appears while the software is installing.
- 8 Select a package from the list that you want to uninstall. Click *Delete* to begin uninstalling the package. Confirm you selection when prompted.
- 9 When the installation is complete, click *Home* to continue with the upgrade.

## Upgrading Software

To upgrade the software, follow these steps:

- 1 Run Upgrade Link if you have not already done so.
- 2 Choose a bridge/router from the pop-up list in the Console page, or click *New* to enter the IP address or hostname. The pop-up list contains bridge/routers and switches that you have upgraded or backed-up previously.
- 3 Select *Upgrade* and click *Apply*.

The Settings Page appears. Select the appropriate settings as described in "Settings Page" on page 28 and click *OK* to close the window.

The Upgrade page appears.

- 4 Select a software package from the pop-up list. The list includes all packages you have installed on the NMS for your platform. If your package is not listed, install the software by clicking New and see "Installing Software on the NMS" on page 29.



**CAUTION:** When upgrading to a package containing encryption, you will be presented with an export restriction message. To upgrade to an encrypted package, you must acknowledge this restriction notice, otherwise the upgrade will not continue.

The Upgrade page shows information about your system, including the flash memory requirements for a manual or automatic recovery upgrade.

- 5 Click *Next*.

- 6 The recommended upgrade method is selected based on the amount of memory you have installed. If you do not wish to perform a customized upgrade, go to step 12.

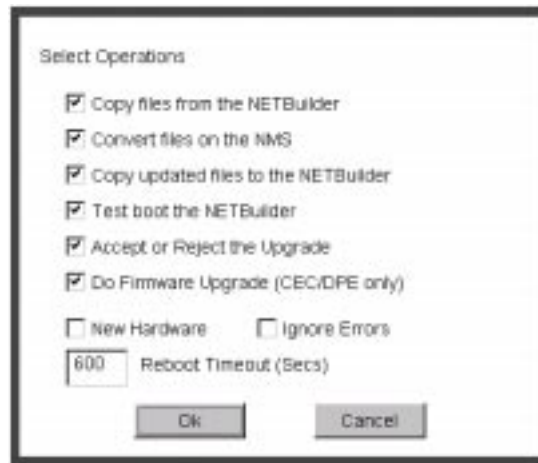


**CAUTION:** If you override the Upgrade Link selection, your upgrade may fail.

- 7 Click on the Advanced button if you want to customize the upgrade process, that is, you do not want to perform all of the upgrade stages at this time.

The Advanced page appears.





- 8 Click the check box for each of the stages you want to complete in the current operation.
- 9 Click *New Hardware* if you are replacing your bridge/router with a new system. For example, click *New Hardware* if you are replacing the CEC module with a DPE module.



*You cannot upgrade to a different platform. For example, you can only upgrade an OfficeConnect bridge/router to an OfficeConnect bridge/router. You cannot upgrade a SuperStack II NETBuilder bridge/router to a SuperStack II NETBuilder SI bridge/router. The only exception is an upgrade from a NETBuilder II CEC module to a DPE module.*

- 10 If you want to alter the Reboot Timeout, enter a new number in the box. The default setting is appropriate for most networks.
- 11 Click *OK*.
- 12 Click *Apply* to begin the upgrade.  
The Status page appears.
- 13 If you are performing a hardware upgrade, replacing a CEC module with a DPE module for example, a message to replace the hardware appears after the software has been backed up to the NMS. Replace the hardware at this time.
- 14 When the upgrade is complete, the bridge/router reboots from the new software. If the boot is not successful:
  - **For automatic recovery**, the bridge/router reboots from the original software after the reboot timeout (default = 10 minutes).
  - **For manual recovery**, you must configure the bridge/router at the local console to reestablish IP connectivity. Once connectivity is established, you can restore the software to return the bridge/router to a preupgrade state. See Chapter 7 for the procedure to restore connectivity and the software.
- 15 Click *Home* then *Exit* on the Console page to exit Upgrade Link.



# 5

## UPGRADING A BRIDGE/ROUTER USING THE COMMAND-LINE UTILITIES

This chapter describes how to upgrade the software on a bridge/router or switch using the command-line Upgrade Management Utilities. 3Com recommends using the Upgrade Link application described in Chapter 4, but you can use the command-line utilities instead if you want to write scripts or if you do not have a web browser on your NMS. Use Transcend Enterprise Manager or Transcend Network Control Services to upgrade multiple bridge/routers.

You can perform the following types of upgrades:

- Upgrading Software Only
  - Automatic Recovery
  - Manual Recovery
- Upgrading Hardware and Software
  - Automatic Recovery
  - Manual Recovery

---

### Preparing for the Upgrade

Before upgrading your system, confirm the following items:

- You have installed the utilities according to Chapter 2.
- You have set the path for the utilities (UNIX only). If you have not set the path, complete the following step for your UNIX shell:
  - For a C-shell installation, add the contents of the following file to the `.cshrc` file for each user you want to have access to the utilities, including root:  
`/usr/3Com/common/data/.login-bcm`  
Or you can enter the path after every logon:  
**`source /usr/3Com/common/data/.login-bcm`**
  - For a Bourne shell installation, add the contents of the following file to the `.profile` file for each user you want to have access to the utilities, including root:  
`/usr/3Com/common/data/.profile-bcm`  
Or you can enter the path after every logon:  
**`./usr/3Com/common/data/.profile-bcm`**
- All configuration files are in the same directory as the boot image.
- You have booted your bridge/router from the primary boot source.
- There is sufficient disk space on the NMS for the amount of software you are installing.

Minimal disk storage requirements depend on the number of different software versions that are stored on the disk drive. Calculate:

- 6 MB for each version of the NETBuilder II bridge/router image
- 6 MB for each version of the PathBuilder S5xx switch image
- 4 MB for each version of the SuperStack II, SuperStack II SI, or OfficeConnect bridge/router image

While you must purchase one copy of software for each bridge/router or switch, you only need to install one copy of a version of software on the NMS.

## Setting Up a File Transfer Method

You can choose to transfer files using FTP or TFTP.

### Setting up for TFTP File Transfers

To use TFTP, you need to set up your NMS in preparation for TFTP file transfers.

Make sure your TFTP server is running. On a Windows workstation 3Com's 3CServer is shipped along with the utilities. Upgrade Link launches 3CServer during start up.

Specify the `-tftp` flag in all command line utilities which use file transfers (`bcmsysupgrade`, `bcmbackup`, `bcmrestore`) if you want to use TFTP file transfer. For example, to specify TFTP file transfer use:

```
bcmsysupgrade -s:from_nb -tftp <device>
```



*If neither flag is used, TFTP is used by default for software release 11.0 and lower, but FTP is used by default for software release 11.1 and higher. If the `-ftp` flag is specified on a NETBuilder bridge/router running software version 11.0 or lower, the FTP password is overwritten with the following text string:*

```
****
```

### Setting up for FTP File Transfers

To use FTP, you need to set up your NMS in preparation for FTP file transfers.



*For Upgrade Link, the user name and password is specified in the Setting Page, as shown on page 23.*

On a UNIX NMS, follow these steps:

- 1 Create a user on your system with `/tftpboot` as the home directory.
- 2 When using the upgrade utilities via the command line or the Transcend Upgrade Manager, specify this user name and password in the `BCMFTPUSER` and `BCMFTPPASS` environment variables.

Specify the `-ftp` flag in all command line utilities that use file transfers (`bcmsysupgrade`, `bcmbackup`, `bcmrestore`) if you want to use FTP file transfer. For example, to specify FTP file transfer use:

```
bcmsysupgrade -s:from_nb -ftp <device>
```



*If no flag is used, TFTP is used by default for software release 11.0 and lower, but FTP is used by default for software release 11.1 and higher. If the -ftp flag is specified on a bridge/router running software version 11.0 or lower, the FTP password is overwritten with the following text string:*

\*\*\*\*

On a Windows NMS, follow these steps:

- 1 Create a user in 3Com's 3CServer FTP settings.
- 2 When using the upgrade utilities via command line or the Transcend Upgrade Manager, specify the ftp user name and password in the BCMFTPUSER and BCMFTPPASS environment variables.

You can specify the -ftp flag in the utilities (bcmsysupgrade, bcmbbackup, bcmrestore) if you want to use FTP file transfer.



*If no flag is used, TFTP is used by default for software release 11.0 and lower, but FTP is used by default for software release 11.1 and higher. If the -ftp flag is specified on a bridge/router running software version 11.0 or lower, the FTP password is overwritten with the following text string:*

\*\*\*\*

---

## Prediagnosing System Problems

Before you begin your upgrade, 3Com recommends that you run the bcmdiagnose utility specifying the file transfer utility, FTP, or TFTP and the IP address or hostname of the bridge/router you are upgrading.

Before using the bcmdiagnose utility, you should set the BCMFTPUSER and BCMFTPPASS environment variables. When using FTP, an error message is generated and the file transfer is aborted if these variables are not set.

The bcmdiagnose utility helps detect any problems with SNMP, FTP or TFTP connectivity.

To run the bcmdiagnose utility on your NMS, use:

```
bcmdiagnose [ -ftp | -tftp ] [<device> | -h]
```

Where <device> is the IP address or hostname of the bridge/router you are upgrading. The -ftp and -tftp flags force the specified file transfer types. See Appendix A for more information about any error messages that may appear.

---

## Installing the Software on the NMS

To install the NETBuilder software, follow these steps:

- 1 **For UNIX**, login as root.
- 2 If you are using a CD-ROM, insert the CD-ROM into the CD-ROM drive on the NMS.
  - a Mount the CD-ROM (UNIX only).

See Appendix C for information on how to mount the CD-ROM.
- 3 Make sure you are using version 11.3 of the Enterprise OS Upgrade Management Utilities.

To check which version you have installed, enter:

```
bcmdiagnose -h
```

The version of the installed utilities is displayed in the following message:

```
bcmdiagnose version 11.3. Copyright 3Com Corporation 1999
```

If the version of the utilities you have installed is not version 11.3, you must first install the 11.3 utilities according to Chapter 2.

#### 4 Install the software.

##### ■ From a CD-ROM:

For UNIX, enter:

```
bcminstall
```

The path option may be used to install the utilities on an NMS that has two or more CD-ROM drives or to install from a remote CD-ROM drive. You must explicitly specify the second or remote CD-ROM drive using:

```
bcminstall -cdrom [<path>]
```

For example, to install software from a second CD-ROM drive on a Solaris machine, enter:

```
bcminstall -cdrom /cdrom/cdrom1/image
```

After the installation is complete, the screen shows an inventory of all bridge/router packages installed, including previous versions you have installed.

For Windows, open a command window and use:

```
bcminstall -cdrom <CD-ROM drive>:\image
```

##### ■ From a Tarred File, use:

```
bcminstall -tar <path>/<filename>
```

##### ■ From an Image File, use:

```
bcminstall -image <path>/<filename>
```



The image file is the NETBuilder bridge/routers boot file, for example, *boot.29K* or *boot.68k*.

#### Software Directories

The `bcminstall` utility installs the software on the NMS in the following directory:

Windows:

```
%tftpboot%\image\<platform>\SW\FW\<version>\<pkg>
```

UNIX:

```
/tftpboot/image/<platform>/SW/FW/<version>/<pkg>
```

For UNIX, if there is not enough space on the disk, you can link `/tftpboot` to another disk. For example, to link `/tftpboot` to the `usr` directory enter:

```
ln -s /usr/tftpboot /tftpboot
```



The utilities work only with the default directory names and structures.

**Values**

tftpboot	For UNIX: Directory specified in inetd or tftpd for tftpd files.
%tftpboot%	For Windows (using the default 3Com TFTP server): Directory specified in the Win.ini file in the "[3Com.nm] TFTPBOOT=" section. The Win.ini file is located in the default Windows directory, for example C:\windows or C:\winnt4.
<platform>	NETBuilder II with CEC Module: NBII NETBuilder II with DPE Module: NBDPE SuperStack II NETBuilder SI bridge/router: NBSI SuperStack II NETBuilder Ethernet bridge/router: NBRO SuperStack II NETBuilder Token Ring bridge/router: NBR2T SuperStack II NETBuilder Ethernet/ISDN bridge/router: NBRI SuperStack II NETBuilder Token Ring/ISDN bridge/router: NBR2TI OfficeConnect NETBuilder bridge/router: NBOCF PathBuilder S5xx Switch: NBPB500
<package>	Two letter designator shown on the CD-ROM label.
[SW   FW]	The software or firmware directory.
<version>	Software version 9.0 through 11.3.

Use the bcmuname utility to display your current platform, package, and version.

---

## Using the Bcmsysupgrade Utility to Upgrade

This section describes how to use the bcmsysupgrade utility for the most common software upgrades.

The command syntax for the bcmsysupgrade utility is:

```
bcmsysupgrade [options] <stage> <device>
```

See "bcmsysupgrade" on page 81 for more information.

The procedures described in the following sections assume you are performing a *like-package* upgrade to version 11.3 with automatic recovery (see "Choosing Automatic Recovery or Manual Recovery" on page 18 for more information).

An example of a like-package upgrade is from the CF package to the CF package. A like-package upgrade is an upgrade where the software package in the version you are upgrading *from* and the version you are upgrading *to* have the same two-letter designator.

If your upgrade is not a like-package upgrade with automatic recovery, or you are upgrading to a version other than the default, you must use the bcmsysupgrade utility with other options. Be sure to use the same options during each stage of the upgrade process. See Table 4 for a description of the options.



For UNIX, after you have upgraded, check the `/tftpboot/CLIENTS/<IP address or mac address>/tmp/stages.log` file to ensure that the options were used consistently throughout the upgrade process.

For Windows, after you have upgraded, check the `\\%tftpboot%\CLIENTS\<IP address or mac address>\tmp\stages.log` file to ensure that the options were used consistently throughout the upgrade process.

Table 4 lists the most common `bcmsysupgrade` options.

**Table 4** Common Options for `Bcmsysupgrade`

Task	Option
Image-only upgrade <b>or</b> Upgrading to a software version other than 11.1	<code>-V:&lt;version you are upgrading to&gt;</code>
Upgrading unlike packages	<code>-k:&lt;package you are upgrading to&gt;</code>
Upgrading with Manual Recovery	<code>-m</code>
Specifying encryption license agreement.	<code>-EncryptionLicenseRead</code>
Using TFTP file transfer.	<code>-tftp</code>
Using FTP file transfer.	<code>-ftp</code>



Whenever you specify an option with `bcmsysupgrade`, you must repeat that option for all steps in the procedure.

*Example*

To upgrade a bridge/router from the SW/NBII-WA,8.3 package to the SW/NBII-FF, 10.1005 package (unlike packages, manual recovery, *and* a different package from 11.0), use:

```
bcmsysupgrade -s:from_nb -k:FF -V:101005 -m <device>
```

The same options must be used to upgrade configuration files:

```
bcmsysupgrade -s:update -k:FF -V:101005 -m <device>
```

See Chapter 8 for more information about how to use `bcmsysupgrade` for specialized cases.

## Filenames

The following sections list the files that may be used when you upgrade a NETBuilder system.

### NETBuilder II Bridge/Router

- **boot.29k** — image file that boots the main processor module.
- **mp6e.29k** — image file that boots the MP 6-port Ethernet module.
- **mpatm.29k** — image file that boots the MP ATMLink module.
- **mbri.68k** — image file that boots the HSS 8-Port BRI module.
- **4portwan.860** — image file that boots the HSS 4-Port WAN module.
- **iofw\_upd.29k** — file that updates the firmware for HSS 3-port, HSS 4-port, HSS 8-port, and MP modules.
- **sys** — file that is used during the upgrade process to determine the source OT target software version.



- **ccsmacro** — file that contains predefined user macros.
- **fpupdate.29k** (*CEC Only*) — file that updates the CEC module firmware.

You may also have several configuration files that will be upgraded by the utilities.

### SuperStack II NETBuilder and OfficeConnect NETBuilder Bridge/Routers

- **boot.68k** — image file that boots the system.
- **sys** — file that may be used during the upgrade process to determine the source or target software version.

You may also have several configuration files that will be upgraded by the utilities.

### PathBuilder S5xx Series Switch

- **boot.ppc** — image file that boots the system.
- **sys** — file that may be used during the upgrade process to determine the source or target software version.

## Upgrading Software Only

This section describes how to upgrade the software on your existing hardware using either automatic or manual recovery. If you are upgrading or replacing your bridge/router, switch or main processor module (NETBuilder II), follow the procedure in “Upgrading Hardware and Software” on page 44.

### Automatic Recovery

This section describes how to perform an upgrade of the Enterprise OS software that does not include a hardware upgrade. See Chapter 3 for the memory requirements for automatic recovery.



*Whenever you specify an option with `bcmsysupgrade`, you must repeat that option for all steps in the procedure. See Table 4 on page 40 or “`bcmsysupgrade`” on page 81 for a list of the options available to use with the `bcmsysupgrade` utility.*

To upgrade the bridge/router software to the default version, follow these steps:

- 1 Back up your current software to the NMS using:

```
bcmsysupgrade [options] -s:from_nb <device>
```

where [-options] lets you specify the `-EncryptionLicenseRead` flag that indicates you have read and understand the encryption license agreement notice and `<device>` is the IP address or hostname of the bridge/router you are upgrading.



**CAUTION:** *When upgrading to a package containing encryption, you must specify the `-EncryptionLicenseRead` option flag. If you attempt to upgrade to an encrypted package and you have not specified the `-EncryptionLicenseRead` option, the upgrade will fail.*



*The `bcmsysupgrade` utility only backs up the files in the primary boot source. To archive both the primary and secondary boot sources, use `bcmbbackup` instead of `bcmsysupgrade`. See “`bcmbbackup`” on page 73 for more information.*

- 2 **NETBuilder II with CEC only** — (The CEC module is *not* supported in software version 11.3. However, you can use the utilities to upgrade your CEC module to software version 10.1 or earlier.) If you are running CEC firmware versions 2.0 or 2.1, which are standard with NETBuilder II software versions 8.0, 8.1, and 8.2, you must upgrade your CEC firmware before proceeding to the next step.



**CAUTION:** *If you are running any other firmware version besides 2.0 or 2.1, you should upgrade the firmware after upgrading the software.*

To upgrade the CEC firmware, follow these steps:

- a Make sure there is a floppy diskette with write access in the floppy drive on the bridge/router. The diskette is formatted during the upgrade, so make sure that the contents of the diskette you intend to use can be overwritten. Perform a manually recoverable firmware upgrade using the option `-m` if you do not want the floppy diskette formatted.

- b Upgrade your firmware to version 2.6 using:

```
bcmsysupgrade -s:upgrade_cec_fw -V:<version you are upgrading to>
<device>
```

After the firmware has been upgraded, the bridge/router reboots.

- 3 Update your configuration files using:

```
bcmsysupgrade -s:update <device>
```

- 4 Copy the upgraded software to the bridge/router using:

```
bcmsysupgrade -s:to_nb <device>
```

- 5 Test your new software using:

```
bcmsysupgrade -s:test_boot <device>
```

The bridge/router is rebooted, and the utilities confirm IP connectivity and that the expected version of software is running.

- 6 Verify that your upgrade completed successfully.

To verify that the software is working properly, you can perform a set of operational integrity checks on the newly upgraded device. These may include:

- Some standard checks based on services active.

A basic service verification test can Ping to specific IP addresses.

- Connectivity checks based on network topology.

Examples of a connectivity verification include:

- Checking the connectivity between devices on different networks, through designated bridge/routers.
- Testing typical device connections on terminals, printers, or hosts.
- Testing the connectivity with specific bridge/routers.
- Custom checks based on applications and typical network use.

For instance, you can check normal operation over the network and perform file transfers, as well as run traces on specific routes or check routing tables.

- 7 Accept or reject the upgrade.

- If your upgrade completed successfully, accept your upgrade using:

```
bcmsysupgrade -s:accept <device>
```

- If the upgrade process failed to meet your verification criteria, reject your upgrade using:

```
bcmsysupgrade -s:reject <device>
```

The bridge/router is rebooted using the previous version of software.

- 8 *NETBuilder II with CEC only* — (The CEC module is *not* supported in software version 11.3. However, you can use the utilities to upgrade your CEC module to software version 10.1 or earlier.) If the upgrade is successful, and if you have not already done so in step 2, upgrade the CEC firmware by following these steps:
- a Make sure there is a floppy diskette with write access in the floppy drive on the bridge/router. Make sure that the contents of the diskette you intend to use can be overwritten. Perform a manually recoverable firmware upgrade using the option `-m` if you do not want the floppy diskette formatted.
  - b Upgrade your firmware to version 2.6 using:

```
bcmsysupgrade -s:upgrade_cec_fw -V:<version you are upgrading to>
<device>
```

After the firmware has been upgraded, the bridge/router reboots.

- 9 *NETBuilder II only* — If the upgrade is successful, and the NETBuilder II bridge/router has a multiport HSS module or an MP module, upgrade the firmware for all these modules using:

```
bcmsysupgrade -s:upgrade_io_fw -m <device>
```

The bridge/router reboots after the firmware is upgraded.

## Manual Recovery

This section describes how to perform a software upgrade with manual recovery of a bridge/router that does not include a hardware upgrade. See Chapter 3 for the memory requirements for manual recovery.



*Whenever you specify an option with `bcmsysupgrade` (such as `-m`), you must repeat that option for all steps in the procedure. See Table 4 on page 40 or “`bcmsysupgrade`” on page 81 for a list of the options available to use with the `bcmsysupgrade` utility.*

To upgrade the bridge/router, follow these steps:

- 1 Back up your current software to the NMS using:

```
bcmsysupgrade [-options] -s:from_nb -m <device>
```

where `[-options]` lets you specify the `-EncryptionLicenseRead` flag that indicates you have read and understand the encryption license agreement notice and `<device>` is the IP address or hostname of the bridge/router you are upgrading.



**CAUTION:** *When upgrading to a package containing encryption, you must specify the `-EncryptionLicenseRead` option flag. If you attempt to upgrade to an encrypted package and you have not specified the `-EncryptionLicenseRead` option, the upgrade will fail.*



*The `bcmsysupgrade` utility only backs up the files in the primary boot source. To archive both the primary and secondary boot sources, use `bcmbackup` instead of `bcmsysupgrade`. See “`bcmbackup`” on page 73 for more information.*

- 2 Update your configuration files using:
 

```
bcmsysupgrade -s:update -m <device>
```
- 3 Copy the upgraded software to the bridge/router using:
 

```
bcmsysupgrade -s:to_nb -m <device>
```
- 4 Accept your upgrade using:
 

```
bcmsysupgrade -s:accept -m <device>
```

The device reboots.

**5** Verify that your upgrade completed successfully.

To verify that the software is working properly, you can perform a set of operational integrity checks on the newly upgraded device. These may include:

- Some standard checks based on services active.

A basic service verification test can Ping to specific IP addresses.

- Connectivity checks based on network topology.

Examples of a connectivity verification include:

- Checking the connectivity between devices on different networks, through designated bridge/routers.
- Testing typical device connections on terminals, printers, or hosts.
- Testing the connectivity with specific NETBuilder bridge/router.
- Custom checks based on applications and typical network use.

For instance, you can check normal operation over the network and perform file transfers, as well as run traces on specific routes or check routing tables.

**6** If you determine that the new software does not meet your requirements, you can reject the upgrade and revert to the software version you were running before the upgrade by using the `bcmrestore` utility.

To reject your upgrade, use:

```
bcmrestore <device>
```

**7** *NETBuilder II only* — If the upgrade is successful, and the NETBuilder II bridge/router has a multiport HSS module or an MP module, upgrade the firmware for all these modules using:

```
bcmsysupgrade -s:upgrade_io_fw -m <device>
```

The bridge/router reboots after the firmware is upgraded.

### If the Bridge/Router or Switch Does Not Boot

If a failure causes the bridge/router or switch not to boot, or if the bridge/router or switch is inaccessible using Telnet, you must configure the bridge/router at the local console to reestablish IP connectivity. After connectivity is reestablished, you can use the `bcmrestore` utility to return the bridge/router or switch to a preupgrade state. See Chapter 7 for connectivity and recovery procedures.

## Upgrading Hardware and Software

This section describes how to upgrade the software on a bridge/router on which you are upgrading or replacing your bridge/router or switch or main processor module (NETBuilder II) using either automatic or manual recovery. If you are upgrading only the software, follow the procedure in “Upgrading Software Only” on page 41.

### Automatic Recovery

This section describes how to perform a software and hardware upgrade with automatic recovery. See Chapter 3 for the memory requirements for automatic recovery.



*Whenever you specify an option with `bcmsysupgrade` (such as `-new_hw`), you must repeat that option for all steps in the procedure. See Table 4 on page 40 or*

“bcmsysupgrade” on page 81 for a list of the options available to use with the bcmsysupgrade utility.

To upgrade the bridge/router software and hardware, follow these steps:

- 1 Back up your current software to the NMS using:

```
bcmsysupgrade [options] -s:from_nb -new_hw <device>
```

where [-options] lets you specify the -EncryptionLicenseRead flag that indicates you have read and understand the encryption license agreement notice and <device> is the IP address or hostname of the bridge/router you are upgrading.



**CAUTION:** When upgrading to a package containing encryption, you must specify the -EncryptionLicenseRead option flag. If you attempt to upgrade to an encrypted package and you have not specified the -EncryptionLicenseRead option, the upgrade will fail.



The bcmsysupgrade utility only backs up the files in the primary boot source. To archive both the primary and secondary boot sources, use bcmbbackup instead of bcmsysupgrade. See “bcmbbackup” on page 73 for more information.

- 2 NETBuilder II with CEC only — (The CEC module is *not* supported in software version 11.1. However, you can use the utilities to upgrade your CEC module to software version 10.1 or earlier.) If you are running CEC firmware versions 2.0 or 2.1, which are standard with NETBuilder II software versions 8.0, 8.1, and 8.2, you must upgrade your CEC firmware before proceeding to the next step.



**CAUTION:** If you are running any other firmware version besides 2.0 or 2.1, you should upgrade the firmware after upgrading the software.

To upgrade the CEC firmware, follow these steps:

- a Make sure there is a floppy diskette with write access in the floppy drive on the bridge/router. Make sure that the contents of the diskette you intend to use can be overwritten. Perform a manually recoverable firmware upgrade using the option -m if you do not want the floppy diskette formatted.
- b Upgrade your firmware to version 2.6 using:

```
bcmsysupgrade -s:upgrade_cec_fw -V:<version you are upgrading to>
<device>
```

After the firmware has been upgraded, the bridge/router reboots.

- 3 Update your configuration files using:

```
bcmsysupgrade -s:update -new_hw <device>
```

- 4 Swap your hardware.
- 5 Attach a console to the Console port on the bridge/router.
- 6 Set up IP routing by following these steps:
  - a Log on to the bridge/router as root and press the Return key.  
The password prompt is displayed.
  - b At the password prompt, press the Return key.  
The network manager prompt (Enterprise OS #) is displayed.
  - c Set up an IP address and subnet mask using:

```
SETDefault !<port> -IP NETaddr = <IP address> [<subnet mask>]
```

Where <port> is the port through which the bridge/router can be accessed by the NMS.

- d Enable IP routing by entering:

```
SETDefault -IP CONTROL = ROute
```

- e Enable a route discovery protocol. For example, enable OSPF by using:

```
SETDefault !<port> -OSPF CONTROL = Enable
```

- f Check your configuration by pinging the bridge/router from the NMS:

```
ping <IP address>
```

Where <IP address> is the IP address of the bridge/router.

## 7 Set up SNMP.

This guide does not describe in detail how to set up the SNMP Service. See *Using Enterprise OS Software* and *Reference for Enterprise OS Software* for more information.

To enable SNMP read/write access, you need to modify two parameters in the SNMP Service: COMmunity and MANager.

- a The COMmunity parameter modifies the list of communities. For information on how to use the COMmunity parameter, See *Using Enterprise OS Software* and *Reference for Enterprise OS Software*.

By default all bridge/router configuration files are accessible to an SNMP-based manager with read privileges. To change SNMP access to configuration files to read/write for a network management station for a community named public, enter:

```
ADD -SNMP COMMunity "public" RW
```

- b With the MANager parameter, create a new manager with read/write access to the bridge/router. For security reasons, limit the number of network management stations by entering the IP address of the network management station that will have access. For example, enter:

```
ADD -SNMP MANager "sysadm" 129.213.224.1
```

## 8 Copy the upgraded software to the bridge/router using:

```
bcmsysupgrade -s:to_nb -new_hw <device>
```

## 9 Test your new software using:

```
bcmsysupgrade -s:test_boot -new_hw <device>
```

The bridge/router is rebooted, and the utilities confirm IP connectivity and that the expected version of software is running.

## 10 Verify that your upgrade completed successfully.

To verify that the software is working properly, you can perform a set of operational integrity checks on the newly upgraded device. These may include:

- Some standard checks based on services active.

A basic service verification test can Ping to specific IP addresses.

- Connectivity checks based on network topology.

Examples of a connectivity verification include:

- Checking the connectivity between devices on different networks, through designated bridge/routers.

- Testing typical device connections on terminals, printers, or hosts.
  - Testing the connectivity with specific bridge/routers.
  - Custom checks based on applications and typical network use.  
For instance, you can check normal operation over the network and perform file transfers, as well as run traces on specific routes or check routing tables.
- 11** Accept or reject the upgrade.
- If your software upgrade completed successfully, accept your upgrade using:  
`bcmsysupgrade -s:accept -new_hw <device>`
  - If the upgrade process failed to meet your verification criteria, reject your upgrade using:  
`bcmsysupgrade -s:reject -new_hw <device>`  
The bridge/router is rebooted using the previous version of software.
- 12** *NETBuilder II with CEC only* — (The CEC module is *not* supported in software version 11.1. However, you can use the utilities to upgrade your CEC module to software version 10.1 or earlier.) If the upgrade is successful, and if you have not already done so in step 2, upgrade the CEC firmware by following these steps:
- a Make sure there is a floppy diskette with write access in the floppy drive on the bridge/router. Make sure that the contents of the diskette you intend to use can be overwritten. Perform a manually recoverable firmware upgrade using the option `-m` if you do not want the floppy diskette formatted.
  - b Upgrade your firmware to version 2.6 using:  
`bcmsysupgrade -s:upgrade_cec_fw -V:<version you are upgrading to> <device>`
- After the firmware has been upgraded, the bridge/router reboots.
- 13** *NETBuilder II only* — If the upgrade is successful, and the NETBuilder II bridge/router has a multiport HSS module or an MP module, upgrade the firmware for all these modules using:  
`bcmsysupgrade -s:upgrade_io_fw -m <device>`  
The bridge/router reboots after the firmware is upgraded.

## Manual Recovery

This section describes how to perform a software and hardware upgrade with manual recovery. See Chapter 3 for the memory requirements for manual recovery.



*Whenever you specify an option with `bcmsysupgrade` (such as `-m` and `-new_hw`), you must repeat that option for all steps in the procedure. See Table 4 on page 40 or “`bcmsysupgrade`” on page 81 for a list of the options available to use with the `bcmsysupgrade` utility.*

To upgrade the bridge/router, follow these steps:

- 1** Back up your current software to the NMS using:

```
bcmsysupgrade [options] -s:from_nb -m -new_hw <device>
```

where `[-options]` lets you specify `-EncryptionLicenseRead` that indicates you have read and understand the encryption license agreement notice and `<device>` is the IP address or hostname of the bridge/router you are upgrading.



**CAUTION:** When upgrading to a package containing encryption, you must specify the `-EncryptionLicenseRead` option flag. If you attempt to upgrade to an encrypted package and you have not specified the `-EncryptionLicenseRead` option, the upgrade will fail.



The `bcmsysupgrade` utility only backs up the files in the primary boot source. To archive both the primary and secondary boot sources, use `bcmbbackup` instead of `bcmsysupgrade`. See “`bcmbbackup`” on page 73 for more information.

**2** Update your configuration files using:

```
bcmsysupgrade -s:update -m -new_hw <device>
```

**3** Upgrade your hardware.

**4** Attach a console to the Console port on the bridge/router.

**5** Set up IP routing by following these steps:

**a** Log on to the bridge/router as root and press the Return key.

The password prompt is displayed.

**b** At the password prompt, press the Return key.

The network manager prompt (Enterprise OS #) is displayed.

**c** Set up an IP address and subnet mask using:

```
SETDefault !<port> -IP NETaddr = <IP address> [<subnet mask>]
```

Where `<port>` is the port through which the bridge/router can be accessed by the NMS.

**d** Enable IP routing by entering:

```
SETDefault -IP CONTROL = ROute
```

**e** Enable a routing protocol. For example, enable RIP by using:

```
SETDefault !<port> -RIPIP CONTROL = (TAlk, LIsten)
```

**f** Check your configuration by verifying that the bridge/router is accessible by using the following at the network management station:

```
PING <IP address>
```

`<IP address>` is the IP address of the bridge/router.

**6** Set up SNMP.

This guide does not describe in detail how to set up the SNMP Service. See *Using Enterprise OS Software* and *Reference for Enterprise OS Software* for more information.

To enable SNMP read/write access, you need to modify two parameters in the SNMP Service: `COMmunity` and `MANager`.

**a** The `COMmunity` parameter modifies the list of communities. For information on how to use the `COMmunity` parameter, see *Using Enterprise OS Software* and *Reference for Enterprise OS Software*.

By default all configuration files are accessible to an SNMP-based manager with read privileges. To change SNMP access to configuration files to read/write for a network management station for a community named `public`, enter:

```
ADD -SNMP COMmunity "public" RW
```

**b** With the `MANager` parameter, create a new manager with read/write access to the bridge/router. For security reasons, limit the number of network



management stations by entering the IP address of the network management station that will have access.

For example, enter:

```
ADD -SNMP MANager "sysadm" 129.213.224.1
```

- 7 Copy the upgraded software to the bridge/router using:

```
bcmssysupgrade -s:to_nb -m -new_hw <device>
```

- 8 Accept your upgrade using:

```
bcmssysupgrade -s:accept -m -new_hw <device>
```

The bridge/router reboots.

- 9 Verify that your upgrade completed successfully.

To verify that the software is working properly, you can perform a set of operational integrity checks on the newly upgraded bridge/router. These may include:

- Some standard checks based on services active.  
A basic service verification test can Ping to specific IP addresses.
- Connectivity checks based on network topology.  
Examples of a connectivity verification include:
  - Checking the connectivity between devices on different networks, through designated bridge/routers.
  - Testing typical device connections on terminals, printers, or hosts.
  - Testing the connectivity with specific NETBuilder bridge/routers.
- Custom checks based on applications and typical network use.  
For instance, you can check normal operation over the network and perform file transfers, as well as run traces on specific routes or check routing tables.

- 10 If you determine that the new software does not meet your requirements, you can reject the upgrade, and revert to the software version you were running before the upgrade, by using the `bcmrestore` utility.

To reject your upgrade, use:

```
bcmrestore -new_hw <device>
```

- 11 *NETBuilder II only* — If the upgrade is successful, and the NETBuilder II bridge/router has a multiport HSS module or an MP module, upgrade the firmware for all these modules using:

```
bcmssysupgrade -s:upgrade_io_fw -m <device>
```

The bridge/router reboots after the firmware is upgraded.

### If the Bridge/Router or Switch Does Not Boot

If a failure causes the bridge/router not to boot, or if the bridge/router or switch is inaccessible using Telnet, you must configure the bridge/router or switch at the local console to reestablish IP connectivity. After connectivity is reestablished, you can use the `bcmrestore` utility to return the bridge/router or switch to a preupgrade state. See Chapter 7 for connectivity and recovery procedures.



# 6

## UPGRADING THE SOFTWARE IMAGE ONLY

An image-only upgrade is an upgrade that replaces the NETBuilder bridge/router or PathBuilder S5xx series switch boot image file but does not upgrade any configuration files. You can perform an image-only upgrade in the following cases:

- You are installing a patch release for your current version of software.
- You are upgrading to a different package of the same version.
- Your new version does not require updated configuration files (for example, 10.1 to 10.3).
- You are upgrading a PathBuilder S5xx series switch.

You can upgrade:

- Using Upgrade Link
- Using the Command-Line Utilities
- Using the Enterprise OS User Interface

You can also use Transcend Enterprise Manager or Transcend Network Control Services to perform an image-only upgrade. See the guide that came with Transcend for more information.

3Com recommends using the utilities instead of the Enterprise OS user interface. The utilities automatically back up the software and perform all the necessary copying and boot source settings automatically.

---

### Preparing for the Upgrade

If you are using Upgrade Link or the command-line, confirm the following items:

- You have installed the utilities according to Chapter 2.
- You have set the path for the utilities (UNIX only). If you have not set the path, complete the following step for your UNIX shell:
  - For a C-shell installation, add the contents of the following file to the `.cshrc` file for each user you want to have access to the utilities, including root:  
`/usr/3Com/common/data/.login-bcm`  
Or you can enter the path after every logon:  
**source /usr/3Com/common/data/.login-bcm**
  - For a Bourne shell installation, add the contents of the following file to the `.profile` file for each user you want to have access to the utilities, including root:  
`/usr/3Com/common/data/.profile-bcm`  
Or you can enter the path after every logon:

`./usr/3Com/common/data/.profile-bcm`

- All configuration files are in the same directory as the boot image.
- You have booted your bridge/router or switch from the primary boot source.
- *For Upgrade Link* — You have a web browser installed with Java support, such as Netscape Navigator 4.5 or Internet Explorer 4.x or later, and it is in your path (UNIX).
- There is sufficient disk space on the NMS for the amount of software you are installing.

Minimal disk storage requirements depend on the number of different software versions that are stored on the disk drive. Calculate:

- 6 MB for each version of NETBuilder II bridge/router images
- 6 MB for each version of PathBuilder S5xx series switch images.
- 4 MB for each version of SuperStack II, SuperStack II SI, or OfficeConnect bridge/router images

While you must purchase one copy of software for each bridge/router or switch, you only need to install one copy of a version of software on the NMS.

## Setting Up a File Transfer Method

You can choose to transfer files using FTP or TFTP.

### Setting up for TFTP File Transfers

To use TFTP, you need to set up your NMS in preparation for TFTP file transfers.

Make sure your TFTP server is running. On a Windows workstation, 3Com's 3CServer is shipped along with the utilities. Upgrade Link launches 3CServer during start up.

Specify the `-tftp` flag in all command line utilities which use file transfers (`bcmsysupgrade`, `bcmbackup`, `bcmrestore`) if you want to use TFTP file transfer. For example, to specify TFTP file transfer use:

```
bcmsysupgrade -s:from_nb -tftp <device>
```



*If neither flag is used, TFTP is used by default for software release 11.0 and lower, but FTP is used by default for software release 11.1 and higher. If the `-ftp` flag is specified on a NETBuilder bridge/router running software version 11.0 or lower, the FTP password is overwritten with the following text string:*

```
****
```

### Setting up for FTP File Transfers

To use FTP, you need to set up your NMS in preparation for FTP file transfers.



*For Upgrade Link, the user name and password is specified in the Setting Page, as shown on page 23.*

On a UNIX NMS, follow these steps:

- 1 Create a user on your system with /tftpboot as the home directory.
- 2 When using the upgrade utilities via the command line or the Transcend Upgrade Manager, specify this user name and password in the BCMFTPUSER and BCMFTPPASS environment variables.

Specify the -ftp flag in all command line utilities that use file transfers (bcmsysupgrade, bcmbackup, bcmrestore) if you want to use FTP file transfer. For example, to specify FTP file transfer use:

```
bcmsysupgrade -s:from_nb -ftp <device>
```



*If no flag is used, TFTP is used by default for software release 11.0 and lower, but FTP is used by default for software release 11.1 and higher. If the -ftp flag is specified on a NETBuilder bridge/router running software version 11.0 or lower, the FTP password is overwritten with the following text string:*

\*\*\*\*

On a Windows NMS, follow these steps:

- 1 Create a user in 3Com's 3CServer FTP settings.
- 2 When using the upgrade utilities via command line or the Transcend Upgrade Manager, specify the ftp user name and password in the BCMFTPUSER and BCMFTPPASS environment variables.

You can specify the -ftp flag in the utilities (bcmsysupgrade, bcmbackup, bcmrestore) if you want to use FTP file transfer.



*If no flag is used, TFTP is used by default for software release 11.0 and lower, but FTP is used by default for software release 11.1 and higher. If the -ftp flag is specified on a NETBuilder bridge/router running software version 11.0 or lower, the FTP password is overwritten with the following text string:*

\*\*\*\*

---

## Using Upgrade Link

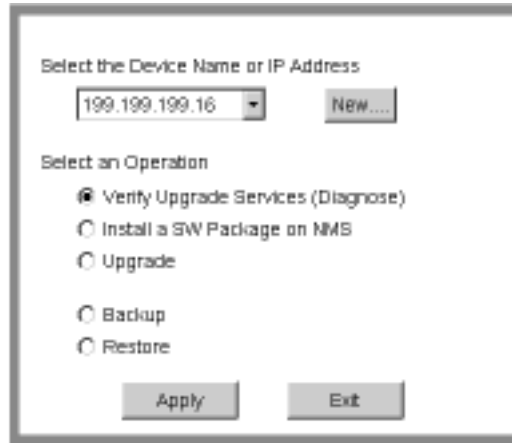
Upgrade Link contains its own web server. Client access to the web server is available locally or remotely via a web browser. Running the Upgrade Link application locally means that the web browser and the web server are running on the same NMS.

See Chapter 4 for information on starting and using the Upgrade Link application.

### Verifying the Bridge/Router for Upgrading

Before upgrading, run the diagnostic utility in Upgrade Link to verify connectivity to the bridge/router by following these steps:

- 1 Choose a bridge/router or switch from the pop-up list in the Console page, or click *New* to enter the IP address or hostname. The pop-up list contains bridge/routers or switches that you have upgraded or backed-up before.



- 2 Select *Verify Upgrade Services (Diagnose)* and click *Apply*.

The Settings Page appears. Select the appropriate settings and click *OK* to close the window.

The Status page appears showing the results of the diagnostic tests.

- 3 If the Status page shows a failure, check the SNMP read/write community string and FTP/TFTP server settings.

If the Status page shows a success, click *Home* to continue with the upgrade and return to the console page.

### Upgrading the Image

To upgrade the image, follow these steps:

- 1 Run Upgrade Link if you have not already done so.
- 2 Choose a bridge/router or switch from the pop-up list in the Console page, or click *New* to enter the IP address or hostname. The pop-up list contains bridge/routers or switches that you have upgraded or backed-up before.

- 3 Select *Upgrade* and click *Apply*.

The Upgrade page appears.

- 4 Select a software package from the pop-up list. The list includes all packages you have installed on the NMS for your platform. If your package is not listed, install the software using the procedure in "Installing the Utilities on a Network Management Station" on page 13.



**CAUTION:** If you select a *NETBuilder* bridge/router or *PathBuilder* switch software package that includes encryption, a message regarding the license agreement appears. To proceed with the installation you must accept this agreement.

The Upgrade window shows information about your system, including the flash memory requirements for a manual or automatic recovery upgrade.

- 5 Click *Next*.

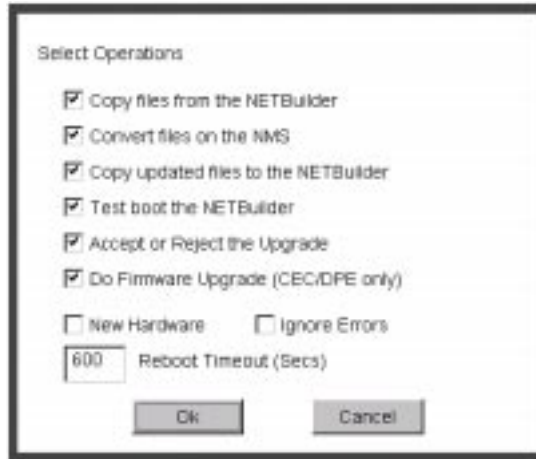
- 6 The recommended upgrade method is selected based on the amount of memory you have installed. If you do not wish to perform a customized upgrade, go to step 12.



**CAUTION:** If you override the *Upgrade Link* selection, your upgrade may fail.

- 7 Click on the Advanced button if you want to customize the upgrade process, that is you do not want to perform all of the upgrade at this time.

The Advanced Dialog box appears.



- 8 Click *New Hardware* if you are replacing your bridge/router with a new system. For example, click *New Hardware* if you are replacing the CEC module with a DPE module.



*You cannot upgrade to a different platform. For example, you can only upgrade an OfficeConnect bridge/router to an OfficeConnect bridge/router. You cannot upgrade a SuperStack II NETBuilder bridge/router to a SuperStack II NETBuilder SI bridge/router. The only exception is an upgrade from a NETBuilder II CEC module to a DPE module.*

- 9 If you want to alter the Reboot Timeout, enter a new number in the box. The default setting is appropriate for most networks.
- 10 Click the check box for each of the stages you want to complete in the current operation.
- 11 Click *OK*.
- 12 Click *Apply* to begin the upgrade.
- The Status page appears.
- 13 If you are performing a hardware upgrade, replacing a CEC module with a DPE module for example, a message to replace the hardware appears after the software has been backed up to the NMS. Replace the hardware at this time.
- 14 When the upgrade is complete, the bridge/router reboots from the new software. If the boot is not successful:
- **For automatic recovery**, the bridge/router reboots from the old software.
  - **For manual recovery**, you must configure the bridge/router at the local console to reestablish IP connectivity. Once connectivity is established, you can restore the software to return the bridge/router to a preupgrade state. See Chapter 7 for the procedure to restore connectivity and the software.
- 15 Click *Home* then *Exit* to exit Upgrade Link.



## Using the Command-Line Utilities

Use the command-line utilities within a script or execute the commands manually. Otherwise, use Upgrade Link as described on page 53.

### Installing the NETBuilder Software

You can upgrade from a CD-ROM, a tar file, or an image you have downloaded from 3Com. If you are installing the software from a CD-ROM, complete the procedure in "Installing the Software on the NMS" on page 37.

You can choose to transfer files using FTP or TFTP. Complete the procedure in "Setting Up a File Transfer Method" on page 17.

### Prediagnosing System Problems

Detect any problems with SNMP or FTP/TFTP connectivity using:

```
bcmdiagnose <device>
```

Where <device> is the IP address or hostname of the bridge/router you are diagnosing.

### Upgrading Using Automatic Recovery

To perform an image-only upgrade using automatic recovery, follow these steps. See Chapter 3 for the memory requirements for automatic recovery.



*Whenever you specify an option with `bcmsysupgrade`, you must repeat that option for all steps in the procedure.*

- 1 Back up your current software to the NMS using:

```
bcmsysupgrade [-options] -s:from_nb -I -V:<software version> <device>
```

where [-options] lets you specify the `EncryptionLicenseRead` option that indicates you have read and understand the encryption license agreement notice and <device> is the IP address or hostname of the bridge/router or switch you are upgrading.



**CAUTION:** *When upgrading to a package containing encryption, you must specify the `-EncryptionLicenseRead` option flag. If you attempt to upgrade to an encrypted package and you have not specified the `-EncryptionLicenseRead` option, the upgrade will fail.*

- 2 Copy the configuration files into the new software directory on the NMS using:

```
bcmsysupgrade -s:update -I -V:<software version> <device>
```

- 3 Copy the upgraded software to the bridge/router using:

```
bcmsysupgrade -s:to_nb -I -V:<software version> <device>
```

- 4 Test your new software using:

```
bcmsysupgrade -s:test_boot -I -V:<software version> <device>
```

The bridge/router is rebooted, and the utilities confirm IP connectivity and that the expected version of software is running.

- 5 Verify that your upgrade completed successfully.

To verify that the software is working properly, you can perform a set of operational integrity checks on the newly upgraded network. These may include:

- Some standard checks based on services active.
  - A basic service verification test can Ping to specific IP addresses.
- Connectivity checks based on network topology.

Examples of a connectivity verification include:

- Checking the connectivity between devices on different networks, through designated bridge/routers.
- Testing typical device connections on terminals, printers, or hosts.
- Testing the connectivity with specific bridge/routers or switches.
- Custom checks based on applications and typical network use.

For instance, you can check normal operation over the network and perform file transfers, as well as run traces on specific routes or check routing tables.

#### 6 Accept or reject the upgrade.

- If your software upgrade completed successfully, accept your upgrade using:

```
bcmsysupgrade -s:accept -I -V:<software version> <device>
```

- If the upgrade process failed to meet your verification criteria, reject your upgrade using:

```
bcmsysupgrade -s:reject -I -V:<software version> <device>
```

The bridge/router or switch is rebooted using the previous version of software.

### Upgrading Using Manual Recovery

To perform an image-only upgrade using manual recovery, follow these steps. See Chapter 3 for the memory requirements for manual recovery.



*Whenever you specify an option with `bcmsysupgrade`, you must repeat that option for all steps in the procedure.*

#### 1 Back up your current software to the NMS using:

```
bcmsysupgrade [-options] -s:from_nb -m -I -V:<software version> <device>
```

where [-options] lets you specify the `EncryptionLicenseRead` option that indicates you have read and understand the encryption license agreement notice and <device> is the IP address or hostname of the bridge/router you are upgrading.



**CAUTION:** *When upgrading to a package containing encryption, you must specify the `-EncryptionLicenseRead` option flag. If you attempt to upgrade to an encrypted package and you have not specified the `-EncryptionLicenseRead` option, the upgrade will fail.*

#### 2 Copy the configuration files into the new software directory on the NMS using:

```
bcmsysupgrade -s:update -m -I -V:<software version> <device>
```

#### 3 Copy the new software to the bridge/router using:

```
bcmsysupgrade -s:to_nb -m -I -V:<software version> <device>
```

#### 4 Accept the upgrade using:

```
bcmsysupgrade -s:accept -I -m -V:<software version> <device>
```

The bridge/router reboots.

#### 5 Verify that your upgrade completed successfully.

To verify that the software is working properly, you can perform a set of operational integrity checks on the newly upgraded network. These may include:

- Some standard checks based on services active.

A basic service verification test can Ping to specific IP addresses.

- Connectivity checks based on network topology.

Examples of a connectivity verification include:

- Checking the connectivity between devices on different networks, through designated bridge/routers or switches.
- Testing typical device connections on terminals, printers, or hosts.
- Testing the connectivity with specific bridge/routers or switches.
- Custom checks based on applications and typical network use.

For instance, you can check normal operation over the network and perform file transfers, as well as run traces on specific routes or check routing tables.

- 6 If you determine that the new software does not meet your requirements, you can reject the upgrade, and revert to the software version you were running before the upgrade, by using the `bcmrestore` utility.

To reject your upgrade, use:

```
bcmrestore <device>
```

---

## Using the Enterprise OS User Interface

If you have not installed the utilities, you can copy the boot image to the bridge/router or switch using the Enterprise OS user interface. To copy the boot image to the bridge/router or switch, follow these steps:

- 1 Install the software on a FTP/TFTP server on the LAN.
- 2 Attach a console or Telnet to the bridge/router or switch.
- 3 Log in with Network Manager privilege.
- 4 Change to the primary boot source directory using:

```
ChangeDir [<device>:]<path>
```

The default device is drive A.

- 5 Complete one of the following procedures:

- If you have enough room on the bridge/router for both the current and new image files, change the name of the current boot image using:

```
ReName <image name> <new name>
```

For example:

```
ReName boot.68k oldboot
```

- If you do not have enough room on the bridge/router for both images, copy the current image to the FTP/TFTP server for backup using:

```
COpy <image name> <IP address of server>:<path/>
```

Then delete the image on the bridge/router or switch using:

```
RemoveFile <image name>
```

- 6 Copy the new boot file from the FTP/TFTP server to the current (primary boot) directory using:

```
COpy <IP address of server>:<path/><image name>
```

For example:

```
COpy 129.142.10.10:image/NBSI/SW/110/CF/boot.68k boot.68k
```

## 7 Reboot the system by entering:

### **ReBoot**

If the reboot is unsuccessful, the bridge/router or switch enters the monitor utility.  
Boot from the old boot file using:

```
BT /<path>/<old name>
```

For example:

```
BT /primary/oldboot
```

# 7

## BACKING UP AND RESTORING SOFTWARE

You should always back up your software and configuration files to a network management station (NMS) in case your hardware or software fails. This chapter describes how to back up and restore the software using Upgrade Link or the command-line utilities.

---

### Prerequisites

Confirm the following items:

- You have installed the utilities according to Chapter 2.
- You have set the path for the utilities (UNIX only). If you have not set the path, complete the following step for your UNIX shell:
  - For a C-shell installation, add the contents of the following file to the `.cshrc` file for each user you want to have access to the utilities, including root:  
`/usr/3Com/common/data/.login-bcm`  
Or you can enter the path after every logon:  
**source /usr/3Com/common/data/.login-bcm**
  - For a Bourne shell installation, add the contents of the following file to the `.profile` file for each user you want to have access to the utilities, including root:  
`/usr/3Com/common/data/.profile-bcm`  
Or you can enter the path after every logon:  
**. /usr/3Com/common/data/.profile-bcm**
- *For NETBuilder II with DPE* — All boot sources (primary, secondary, and test) are on drive A. The DPE module has flash memory drives A and B, but the NETBuilder Upgrade Management Utilities only support drive A. Use the `bcmconfig` utility or the `SysconF` command on the NETBuilder II user interface to set up the boot sources if they are not on drive A.
- All configuration files are in the same directory as the boot image.
- You have booted your bridge/router from the primary boot source.
- *For Upgrade Link* — You have a web browser installed with Java support, such as Netscape Navigator 4.5 or Internet Explorer 4.x, and it is in your path (UNIX).

## Setting Up a File Transfer Method

You can choose to transfer files using FTP or TFTP.

### Setting Up for TFTP File Transfers

To use TFTP, you need to set up your NMS in preparation for TFTP file transfers.

Make sure your TFTP server is running. On a Windows workstation, 3Com's 3CServer is shipped along with the utilities. Upgrade Link launches 3CServer during start up.

Specify the `-tftp` flag in all command line utilities which use file transfers (`bcmsysupgrade`, `bcmbackup`, `bcmrestore`) if you want to use TFTP file transfer. For example, to specify TFTP file transfer use:

```
bcmsysupgrade -s:from_nb -tftp <device>
```



*If neither flag is used, TFTP is used by default for software release 11.0 and lower, but FTP is used by default for software release 11.1 and higher. If the `-ftp` flag is specified on a NETBuilder bridge/router running software version 11.0 or lower, the FTP password is overwritten with the following text string:*

```
****
```

### Setting Up for FTP File Transfers

To use FTP, you need to set up your NMS in preparation for FTP file transfers.



*For Upgrade Link, the user name and password is specified in the Setting Page, as shown on page 23.*

On a UNIX NMS, follow these steps:

- 1 Create a user on your system with `/tftpboot` as the home directory.
- 2 When using the upgrade utilities via the command line or the Transcend Upgrade Manager, specify this user name and password in the `BCMFTPUSER` and `BCMFTPPASS` environment variables.

Specify the `-ftp` flag in all command line utilities that use file transfers (`bcmsysupgrade`, `bcmbackup`, `bcmrestore`) if you want to use FTP file transfer. For example, to specify FTP file transfer use:

```
bcmsysupgrade -s:from_nb -ftp <device>
```



*If no flag is used, TFTP is used by default for software release 11.0 and lower, but FTP is used by default for software release 11.1 and higher. If the `-ftp` flag is specified on a NETBuilder bridge/router running software version 11.0 or lower, the FTP password is overwritten with the following text string:*

```
****
```

On a Windows NMS, follow these steps:

- 1 Create a user in 3Com's 3CServer FTP settings.
- 2 When using the upgrade utilities via command line or the Transcend Upgrade Manager, specify the ftp user name and password in the BCMFTPUSER and BCMFTPPASS environment variables.

You can specify the -ftp flag in the utilities (bcmsysupgrade, bcmbbackup, bcmrestore) if you want to use FTP file transfer.



*If no flag is used, TFTP is used by default for software release 11.0 and lower, but FTP is used by default for software release 11.1 and higher. If the -ftp flag is specified on a NETBuilder bridge/router running software version 11.0 or lower, the FTP password is overwritten with the following text string:*

\*\*\*\*

---

## Backing Up the Software

Back up your software using Upgrade Link or the command-line utilities.

### Using NETBuilder Upgrade Link

Upgrade Link is an easy to use GUI for the utilities that runs in a web browser. See Chapter 4 for information on running Upgrade Link locally or remotely. Make sure you select and set up your file transfer method.

### Using the Command Line Utilities

You can use the command-line utilities if you want to write scripts or if you do not have a web browser on your NMS. See "Upgrading a Bridge/Router Using the Command-Line Utilities" on page 63 for information on using the command-line utilities. Make sure you select and set up your file transfer method.

### Verifying the Device for Backing Up

Before backing up, run the diagnostic utility in Upgrade Link to verify connectivity to the device by following these steps:

- 1 Choose a bridge/router from the pop-up list in the Console page, or click *New* to enter the IP address or hostname. The pop-up list contains devices that you have upgraded or backed-up before.

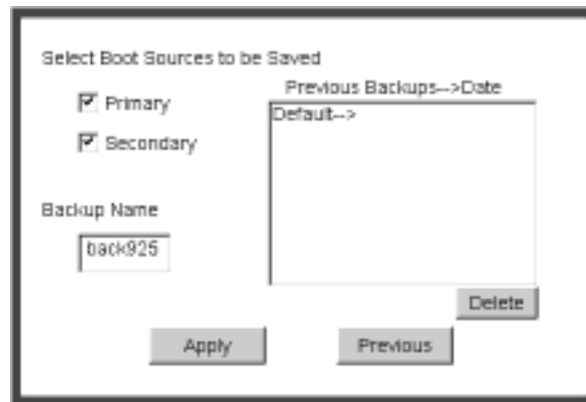


- 2 Select *Verify Upgrade Services (Diagnose)*.  
A Status window appears showing the results of the diagnostic tests.
- 3 If the Status window shows a failure, check the SNMP read/write community string for FTP/TFTP file transfer permissions.  
If the Status window shows a success, click *Home* to continue with the backup.

### Backing Up the Software

To back up the software, follow these steps:

- 1 Run Upgrade Link if you have not already done so.
- 2 Choose a bridge/router from the pop-up list in the Console page, or click *New* to enter the IP address or hostname. The pop-up list contains bridge/routers that you have upgraded or backed-up before.
- 3 Select *Backup* and click *Apply*.  
The Settings page appears.
- 4 Select the appropriate settings and click *OK*.  
The Backup page appears.



- 5 Select the boot source you want to back up.  
The box on the right shows information about the previous backups.  
Assign a name to the current backup by entering a name in the edit box. Names can be only eight characters long and may only contain alphanumeric characters.
- 6 Click *Apply* to begin the backup.  
The Status window shows when the backup is complete.
- 7 Click *Home* then *Exit* to exit Upgrade Link.

### Using the Command-Line

Use the command-line utilities if you have a script or if you do not have a web browser. Otherwise, use Upgrade Link as described on page 63.

### Prediagnosing System Problems

Detect any problems with SNMP or FTP/TFTP connectivity using:

```
bcmdiagnose [-ftp | -tftp] [<device> | -h]
```

Where <device> is the IP address or hostname of the bridge/router or switch you are diagnosing.



If `bcmdiagnose` shows a failure, check the SNMP read/write community string for FTP/TFTP file transfer permissions.

### Backing Up the Software

To back up your software to an NMS, use:

```
bcmbbackup [both | primary | secondary] [-name:<backname>]<device>]
```

#### Values

both	Backs up both the primary and secondary boot source. This value is the default.
primary	Backs up the primary boot source.
secondary	Backs up the secondary boot source.
<backname>	Specifies the name of the backup for the boot blocks.
<device>	The IP address or hostname of the bridge/router.

**Directory Paths** All backups and upgrades use the following directory paths.

#### For UNIX:

```
/tftpboot/CLIENTS/<mac_address>/bcm/<backname><directory name on  
bridge/router>/
```

For example:

```
/tftpboot/CLIENTS/0800020A399E/bcm/name/primary/
```

#### For Windows:

```
\%tftpboot%\CLIENTS\<mac_address>\bcm\<backname>\<directory name on  
bridge/router>\
```

For example:

```
\tftpboot\CLIENTS\0800020A399E\bcm\name\primary\
```

#### Values

tftpboot	For UNIX: Directory specified in <code>inetd</code> or <code>tftpd</code> for <code>tftpd</code> files.
%tftpboot%	For Windows (using the default 3Com TFTP server): Directory specified in the <code>Win.ini</code> file in the "[3Com.nm] TFTPBOOT=" section. The <code>Win.ini</code> file is located in the default Windows directory, for example <code>C:\windows</code> or <code>C:\winnt4</code> .
CLIENTS	Name of the directory.
<mac_address>	The MAC address of the bridge/router or switch.
<directory name on bridge/router>	The name of the boot directory on the bridge/router or switch. If the primary boot source is set to <code>/</code> , the name of the current version of software is used instead. If the secondary boot source is set to <code>/</code> , then the directory is called "secondar".

## Restoring Software from a Backup

If your bridge/router fails, you can restore software from a backup on the NMS. If your hardware fails or you lose IP and SNMP configuration, you must first reconfigure IP and SNMP on the bridge/router. If you still have connectivity, go to “Restoring the Software Using Upgrade Link” on page 68 or “Restoring the Software Using the Command-Line” on page 69.

## Configuring IP Routing

If the bridge/router failure interrupted IP connectivity, you must set up IP routing before restoring software.

To set up IP routing, follow these steps:

- 1 Attach a console to the Console port on the bridge/router.
- 2 Log on as root and press the Return key.  
The password prompt is displayed.
- 3 At the password prompt, press the Return key.  
The network manager prompt (Enterprise OS #) is displayed.
- 4 Set up an IP address and subnet mask using:  

```
SETDefault !<port> -IP NETaddr = <IP address> [<subnet mask>]
```

  
For more information on IP configuration, see *Using Enterprise OS Software*.
- 5 Enable IP routing by entering:  

```
SETDefault -IP CONTROL = ROute
```
- 6 Enable a routing protocol. For example, enable OSPF using:  

```
SETDefault !<port> -OSPF CONTROL = Enable
```
- 7 Ensure your configuration by verifying that the bridge/router is accessible from the NMS using:  

```
PING <IP address>
```

  
Where <IP address> is the IP address of the bridge/router.

## Configuring SNMP

This chapter does not describe in detail how to set up the SNMP Service. See *Using Enterprise OS Software* and *Reference for Enterprise OS Software* for more information.

To enable SNMP read/write access, you need to modify two parameters in the SNMP service: Community Manager and Manager.

- 1 The Community Manager parameter modifies the list of communities. For information on how to use the COMMunity parameter, see *Using Enterprise OS Software* and *Reference for Enterprise OS Software*.

By default all bridge/router configuration files are accessible to an SNMP-based manager with read privileges. To change SNMP access to configuration files to read/write for a network management station with a community named “public,” enter:

```
ADD -SNMP COMMunity "public" RW
```

- 2 With the Manager parameter, create a new manager with read/write access to the bridge/router. For security reasons, limit the number of network management stations by entering the IP address of the network management station that will have access. For example, enter:

```
ADD -SNMP Manager "sysadm" 129.213.224.1
```

### Mapping Hostnames Using the etc/snmp.cfg File

/etc/snmp.cfg is used to configure a mapping between hostnames and/or IP addresses and SNMP community strings. If the NETBuilder bridge/router is configured to accept a community string other than "public", you need to update this file with the new community string. Follow the examples in the file when adding your own entries.

The following is an example file showing how community strings are mapped to a device.

```
#
# This file indicates which community strings are to be used
# with a particular device. Follow the examples below
# Timeout values are given in seconds.
#
# Name      read   write  Timeout [Platform]
# foo       public private 10      netbuilder
#
# [platform] is optional, and must be one of:
# netbuilder
# netbuilder2
# netbuilderro
# netbuilder+
# lanplex5004
# lanplex5012
# lanplex6004
# lanplex6004R4
# lanplex6012
# lanplex6012R4
# lanplex2500
# lanplex2016
# fms
# fmsII
# fmsbridge
# fmstp8i
# linkswitch
# linkswitch1000
# linkswitch2200
# linkswitch3000
# msh
# msh4bridge
# mshfddi
# mshlinkswitch
# mshtrbridge
# linkconverter
#
# Example:
# 192.0.10.4 private private 10
```

## Restoring the Software Using Upgrade Link

Upgrade Link is an easy to use GUI for the utilities that runs in a web browser.

Upgrade Link is an easy to use GUI for the utilities that runs in a web browser. See Chapter 4 for information on running Upgrade Link locally or remotely. Make sure you select and set up your file transfer method.

### Verifying the Device for Restoring

Before restoring, you should run the diagnostic utility in Upgrade Link to verify connectivity to the bridge/router or switch by following these steps:

- 1 Choose a device from the pop-up list in the Console page, or click *New* to enter the IP address or hostname. The pop-up list contains bridge/routers that you have upgraded or backed-up before.



The screenshot shows a web-based interface for device management. At the top, it says "Select the Device Name or IP Address". Below this is a text input field containing "199.199.199.16" and a "New...." button. Underneath, there's a section titled "Select an Operation" with five radio button options: "Verify Upgrade Services (Diagnose)" (which is selected), "Install a SW Package on NMS", "Upgrade", "Backup", and "Restore". At the bottom of the form are two buttons: "Apply" and "Exit".

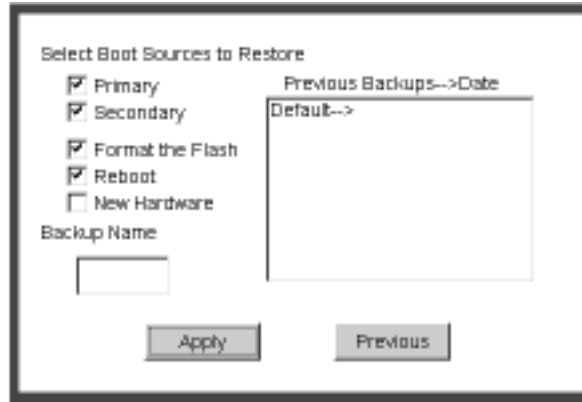
- 2 Select *Verify Upgrade Services (Diagnose)* then click *Apply*.  
A Status window appears showing the results of the diagnostic tests.
- 3 If the Status window shows a failure, check the SNMP read/write community string for TFTP file transfer permissions.  
If the Status window shows a success, click *Home* to continue with the restoration.

### Restoring the Software

To restore the software, follow these steps:

- 1 Access Upgrade Link if you have not already done so.
- 2 Choose a bridge/router or switch from the pop-up list in the Console page, or click *New* to enter the IP address or hostname. The pop-up list contains bridge/routers and switches that you have upgraded or backed-up before.

- 3 Select *Restore* and click *Next*.  
The Setting page appears.
- 4 Select the appropriate settings and click *OK*.  
The Restore page appears.



- 5 Select the boot source you want to restore.  
The boxes on the right show information about the backups, including the names, directories, and dates. You can select a backup by double-clicking it, or by entering the name in the edit box.
- 6 Check the appropriate options:
  - **Format the Flash** — formats the flash memory before restoring the software. If you uncheck this option, Upgrade Link will attempt to restore the software in the available space. If there is not enough space for the image, the restoration will fail.
  - **Reboot** — automatically reboots when the restoration is complete.
  - **New Hardware** — must be checked if you are replacing the hardware.
- 7 Click *Apply* to begin the restoration.  
The Status window shows when the restoration is complete.
- 8 Click *Home* then *Exit* to exit Upgrade Link.

### Restoring the Software Using the Command-Line

Use the command-line utilities if you have a script or if you do not have a web browser. Otherwise, use Upgrade Link as described on page 68.

#### Prediagnosing System Problems

Detect any problems with SNMP or TFTP connectivity using:

```
bcmdiagnose [ -ftp | -tftp ] [<device> | -h]
```

Where <device> is the IP address or hostname of the bridge/router you are diagnosing.

If `bcmdiagnose` shows a failure, check the SNMP read/write community string for FTP/TFTP file transfer permissions.

#### Restoring the Software

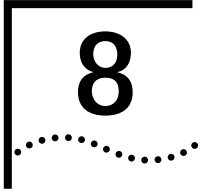
If you are replacing the hardware, restore the software using:

```
bcmrestore -new_hw [ -<backname>] <device>
```

If you are not replacing the hardware, use:

```
bcmrestore [ -<backname>] <device>
```

Where <backname> is the name of the backup for the boot blocks.



# REFERENCE FOR THE UPGRADE MANAGEMENT UTILITIES

This chapter describes the syntax and options for each utility, as well as how to download the utilities, and where they are installed on your system.

---

## Accessing and Downloading the Utilities

The Upgrade Management Utilities are provided on CD-ROM with every Enterprise OS software package. See Chapter 2 to install the utilities from CD-ROM.

The upgrade utilities are installed into the directory `/usr/3Com/bcm/`.

### Downloading the Utilities

You can download the latest utilities from the following locations:

- FTP — [ftp.3Com.com](ftp://ftp.3Com.com)
- World Wide Web — <http://www.infodeli.3Com.com/>
- 3Com Bulletin Board Service (3ComBBS) — See Appendix D for local BBS numbers.

See the `ruu112.txt` file accompanying the utilities for instructions on decompression and installation of the utilities.

### Downloading UNIX Files

The UNIX files compressed with the UNIX compress utility. To use the downloaded files, you must first expand the files using the UNIX decompress utility. For instructions on how to download and decompress the utilities, see the `ruu111.txt` file.

The following are the UNIX files:

<code>ruusol113.Z</code>	Contains the utilities for Solaris 2.x.
<code>ruuhp113.Z</code>	Contains the utilities for HP-UX 9.0.5, 10.10, and 10.20.
<code>ruuaix113.Z</code>	Contains the utilities for IBM AIX 3.2.5, 4.1.4, and 4.2.
<code>ruu112.txt</code>	Contains the instructions for downloading and decompressing the utilities.

### Downloading Windows Files

The Windows files are compressed with a compression utility. To use the downloaded files, you must first expand them using the decompress utility PKUNZip. PKUNZip can be downloaded from the following URLs:

- <http://www.pkware.com/>
- or
- <http://infodeli.3com.com/infodeli/swlib>

For instructions on how to decompress and install the utilities, see the ruu110.txt file.

The following are the Windows files:

ruu113.zip	Contains the utilities for Windows95, Window98, and Windows NT 4.0.
ruu113.txt	Contains the instructions for downloading and decompressing the utilities.

---

## Update Log File

The bcmsysupgrade utility creates log files in the tftpboot/CLIENTS/<mac\_address>/tmp directory. These log files include the following:

- **bcmsysupgrade.log.<stage>** — contains a detailed listing of transactions executed for a stage.
- **stages.log** — contains a history of bcmsysupgrade, bcmbackup, and bcmrestore commands for all successfully completed stages and operations. This file acts as an upgrade record of completed stages, and includes the date and time of execution.
- **bcmupdate.log** — contains a list of the configuration files converted during the upgrade process. The file contains all stderr and stdout text, the log and stage files. This file is appended to the bcmsysupgrade.log file when the upgrade procedure is completed.

---

## Utility Descriptions and Syntax

This section describes each of the Upgrade Management Utilities as well as the syntax and options. The error codes for individual Enterprise OS Upgrade Management Utilities are accessible in the man pages for the utilities. Utilities are in alphabetical order.

**Overview** Table 5 summarizes the functions of the upgrade utilities.

**Table 5** Network Management Utilities Functions

Utility	Function
bcmbackup	Backs up the current bridge/router operational state and files to the network management station.
bcmconfig	Manages the bridge/router boot source parameters.
bcmctrl	Manipulates the bridge/router boot sources. Performs booting-related functions. Queries or waits on file transfer states.
bcmdf	Checks the media and displays the amount of used and free space.
bcmdiagnose	Identifies the most common network management station installation and bridge/router configuration problems.
bcmftp	Sets the FTP username and password and initializes the FTP client on the bridge/router.
bcminstall	Installs bridge/router software and firmware on a network management station.
bcmloadconfig	Allows you to execute commands in a text file.

(continued)



**Table 5** Network Management Utilities Functions (continued)

Utility	Function
bcmrestore	Restores a bridge/router to a previous operational state by copying files from the network management station to the bridge/router and setting the boot sources.
bcmsetup	Places the latest version of the Enterprise OS Upgrade Management Utilities on the network management station. Integrates the Upgrade Management Utilities with Transcend.
bcmsysupgrade	Performs all upgrade functions on NETBuilder bridge/routers and PathBuilder Switches.
bcmuname	Displays general information about the bridge/router.
bcmupdate	Converts configuration files on the network management station for use with a newer version of software.
UpgradeLink	Launches Upgrade Link.

### Getting Help

Help is available in HTML or (UNIX) man pages.

**Man Pages** On a UNIX system, access the man pages by entering:

```
man bcm-intro
```

To access the man pages for a specific utility, use:

```
man <NMU_name>
```

where <NMU\_name> is the name of the upgrade utility.

**HTML Help** To access the HTML help, enter the following URL in your browser:

```
/usr/3Com/bcm/gui/hlp/bcm-intro.html
```

Or to access help for a specific utility, use:

```
/usr/3Com/bcm/gui/hlp/<utility>.html
```

### bcmbackup

**Syntax** `bcmbackup [both | primary | secondary] <-ftp | -tftp> [-name: <backname>] <device>`

**Description** You can use this utility to prepare a network management station as a secondary boot source, to archive the configuration as a backup copy, to obtain a baseline configuration, or to perform an off-line configuration. The bcmbackup utility copies the primary and secondary boot sources from a bridge/router or switch to a network management station. The bcmbackup utility can be used instead of the -s:from\_nb stage of bcmsysupgrade, which captures only the primary boot source.

You can assign names to the backup directories, which allows you to maintain multiple backups of the primary and secondary boot blocks. This symbolic name is applicable to both the primary and secondary boot blocks. The default boot block names are supported to maintain backward compatibility.

<i>Values</i>	both	Default value, which backs up both the primary and secondary boot sources.
	primary	Backs up the primary boot source.
	secondary	Backs up the secondary boot source.
	<device>	Indicates the IP address or hostname of the bridge/router.
	<-ftp   -tftp>	Specifies the file transfer protocol to be used in the backup process.
	<backname>	Specifies the name to be given to the backup file of the boot blocks.

*Options* No available options.

*Example* For example, to backup the primary boot block as MyBackup01 using FTP, enter:

```
bcmbackup primary -ftp -name:MyBackup01 199.199.199.2
```

## **bcmconfig**

*Syntax* `bcmconfig <device>[:<slot>] [<boot_source>] [options]`

*Description* The bcmconfig utility performs EEPROM configuration of the device and retrieves or sets the following parameters for each boot source:

- Path and name for load image
- Path and name for configuration files

The bcmconfig utility does not alter the running state of the bridge/router or switch. It only determines what happens the next time the bridge/router or switch is rebooted. The utility also detects the following error and warning conditions:

- Files/paths not present locally to the box or locally to this server.
- Inconsistency with other configurations in other blocks (such as subnet masks).

<i>Values</i>	<device>	Indicates the name or IP address of the bridge/router.
	<slot>	Indicates the slot number of an I/O module. (Use options marked with *.)
	<boot_source>	Designates type of boot source: master, primary, secondary, test, dump, or all.

*Options* Where <boot source> is master, the [options] are:

-st[artup	(once		Attempts to boot once.
	forever		Attempts to boot forever.
	local)		Forces boot from local media.

Where <boot source> is primary, secondary, test, or dump, the [options] are:

-configp[ath]:<file_path>	Path to the configuration files.
-fi[le]:<file_name>*	Name of boot file.
-bo[otdevice]: (network   localA   localB)	Boots from network. Boots from local media A. Boots from local media B.
-configd[evice]: (bootdevice   local   network)	Depends on -bootdevice. Local media configuration. Network configuration.
-fo[rmat]:(canonical   noncanonical)	Address format.
-cl[ock]:(internal   external)	Internal/external clocking.
-conn[ector]:(v35   rs232)	Connector type.
-ba[udrate]:	<9.6KB   19.2KB   38.4KB   56KB   64KB   128KB   256KB   448KB   1536KB   2048KB   4MB   16MB>
-sl[ot]:1..8	Boot slot.
-in[terface]:(a   b)	Interface number.
-pa[ssword]:<wan_password>	A character string from 0–5 characters.
-di[scovery]:(<localaddr>   <bootp>)	Address discovery.
-ga[teway]:<IPADDRESS>	Default gateway IP address.
-lo[calip]:<IPADDRESS>	Bridge/router IP address.
-se[rver]:<IPADDRESS>	TFTP boot server IP address.
-cf[gserver]:<IPADDRESS>	Server where configuration files are stored.
-ma[sk]:<IPADDRESS>	Bridge/router subnet mask.
-notraps	Disables the sending of SNMP traps useful during upgrading.
-re[tries]:0..255	Number of retries from 0–255.
-traps	Enables the sending of SNMP traps; useful after upgrade completes.

## bcmctrl

*Syntax* bcmctrl <device>[:<slot>] [--option[:<value>]]

*Description* The bcmctrl utility does the following tasks:

- Reboots a bridge/router. This follows a normal boot sequence, where the load image and configuration files are found in the primary boot source.
- Performs a test reboot.
- Copies all the parameters in the test boot source to the primary boot source.
- Reports reboot and file transfer states.
- Reboots a specified multiprocessor module.

<i>Values</i>	<device>	Identifies the bridge/router that receives the changes specified by the bcmctrl utility.
	<slot>	Specifies the slot where the I/O module is located that receives the changes specified by the bcmctrl utility.

<i>Options</i>	-u[update]	Copies the complete set of boot parameters from the test boot source to the primary boot source. This operation is typically performed after a successful test reboot to ensure that the next normal reboot uses the same parameters.
	-s[wap]	Swaps the parameters in the primary and secondary boot sources.
	-c[ommit]	Cancels the test reboot countdown timer. This stops the automatic test reboot begun by the test reboot parameter.
	-r[eboot]*	Reboots the bridge/router or switch or the I/O module specified by the <slot> parameter.
	-t[est reboot]: [<seconds>]*	Reboots the bridge/router or switch from the test boot source so that if this command is not used again with the -c option, the bridge/router automatically reboots with its primary configuration. The optional seconds parameter indicates the length of time in seconds the bridge/router should count down before automatically rebooting. If you do not supply a value for <seconds>, the default value of 120 seconds is used.
	-q:r[eboot]	Queries the reboot status of the bridge/router or switch or I/O module specified by the <slot> parameter.
	-q:t[ransfer]	Queries the transfer status of the bridge/router or switch.
	-w:r[eboot]	Waits for the bridge/router or switch to reboot.
	-w:t[ransfer]	Waits for the last requested transfer to complete.



*The options marked with an asterisk will reboot the bridge/router or individual modules.*

## **bcmdf**

*Syntax* bcmdf <device>[:<drive:>]

*Description* The bcmdf utility displays the amount of total and available disk space.

<i>Values</i>	<device>	The hostname or the IP address of the bridge/router or switch.
	<drive:>	The device drive that holds the disk for which the amount of total and available disk space will be counted and displayed.

*Options* No available options

**bcmdiagnose**

*Syntax*    `bcmdiagnose [ -ftp | -tftp ] [<device>] [-h]`

*Description*    The bcmdiagnose utility identifies the most common installation and configuration problems. 3Com recommends that this utility be run immediately following bcmsetup and before running any other upgrade management utility. The bcmdiagnose utility validates that the upgrade management installation process went as expected, and tests that the bridge/router or switch and network management station are configured correctly. The bcmdiagnose utility validates that:

- The upgrade utilities are installed correctly on the NMS.
- The bridge/router or switch is reachable over IP.
- The bridge/router SNMP Service is correctly configured.
- The TFTP server and file permissions are correctly configured.
- The boot images and the configuration files are in the same directory on drive A.
- The software is compatible with the firmware (NETBuilder II bridge/router with CEC only).
- When FTP is specified for file transfer, the FTP user name and password must be correctly configured by setting the BCMFTPUSER and BCMFTPPASS environment variables.

The bcmdiagnose utility displays troubleshooting messages and has two error return codes:

- 0 for success
- 1 for failure

*Values*

<device>    Indicates the hostname or the IP address of the bridge/router or switch. If bcmdiagnose is invoked without the bridge/router IP address or host name, only the installation tests of the Enterprise OS Upgrade Management Utilities is executed. If the device is specified, the installation test is skipped, but the utility performs the IP, SNMP, and TFTP server configuration tests.

*Options*

-ftp        Specifies FTP as the file transfer protocol to be used. FTP is the default protocol for Enterprise OS software versions 11.1 and higher.

-tftp       Specifies TFTP as the file transfer protocol to be used. TFTP is the default protocol for Enterprise OS software versions 11.0 and lower.

[-h]        Displays help message.

**bcminstall**

*Syntax* `bcminstall [-h | -cdrom [<path>] | -tar <path> | -r | -diskette | -image <path> | <device>]`

*Description* The `bcminstall` utility installs bridge/router software and firmware onto a network management station from either a CD-ROM, tar files, an image file, a bridge/router, or a network management station floppy diskette. You must install all applicable Enterprise OS software packages before beginning the upgrade process. On a UNIX system, you must have superuser privileges to run the `bcminstall` utility.

The default method of installing a Enterprise OS package is to install it from a CD-ROM drive on the network management station. The `bcminstall` utility copies the files on the CD-ROM into a directory under `/%tftpboot%/image`. Using the `path` option allows installation from a network management station that has two or more CD-ROM drives, or from a remote CD-ROM drive. On a UNIX system, you must specify the path if you are installing from a CD-ROM that is not `cdrom0`. For example, to install a Enterprise OS software package from a second CD-ROM on Solaris, enter:

```
bcminstall -cdrom /cdrom/cdrom1/image
```

The following example shows how to install a boot image for an image-only upgrade from the directory `/tmp/`:

```
bcminstall -image /tmp/boot.68k
```

*Options*

<code>-h</code>	Displays a usage message. Installs using the first CD-ROM on the network management station.
<code>-cdrom [&lt;path&gt;]</code>	Installs using the CD-ROM from a directory path. Required for Windows.
<code>-tar &lt;path&gt;</code>	Installs a tarred package file.
<code>-r</code>	Reports all installed bridge/router packages on the network management station.
<code>-diskette</code>	Installs from the network management station floppy drive (version 9.1 and earlier).
<code>-image &lt;path&gt;</code>	Installs an image file (for image-only upgrades only).
<code>&lt;device&gt;</code>	The IP address of the bridge/router from which the over-the-network installation occurs.

*Default* If no command line options are specified, the `bcminstall` utility uses the network management station local CD-ROM drive.

**bcmloadconfig**

**Syntax** `bcmloadconfig [-s "<service1> [<service2>...]" | -l <line number>] [-i] -f <config file path>/<filename> <device> [-b] [-t:<reboot timeout>]`

**Description** You can execute multiple commands on the Enterprise OS user interface at once by entering the commands in a text file, then loading the file. The bcmloadconfig utility copies a specified configuration file to the bridge/router or switch and executes the commands in the file.

The utility can execute only the SETDefault, SHow, SHowDefault, ADD, DELeTe, and SAVEbgp commands. Blank lines and comment lines (lines beginning with the # character) are allowed in the file. If the command requires more than one line, the backslash (\) can be used to terminate the current line and to indicate that the command continues on the next line. A line cannot contain more than one command.

If you specify one or more services, only the commands belonging to those services are executed. Up to 10 services can be specified. Instead of specifying a service, you can specify a line number to indicate the starting line number within the file to execute.

By default, the bcmloadconfig utility terminates whenever it detects a bad command, a command that is not supported by the bcmloadconfig utility, or a command that fails to execute successfully on the bridge/router. If -i is specified, the utility continues execution when an error is encountered.

All commands and comments and any generated messages are written to the CONFIG.LOG file in the /tftpboot/CLIENTS/<MAC address>/cfg/ directory on the NMS. Any passwords specified in the commands are replaced by a string of asterisks. Skipped commands are not written to the CONFIG.LOG file.

**Values**

-s "<service1> [<service2>...]" Only commands found for these services are executed. Up to 10 services may be specified. The default is to execute the configuration commands for all services.

-l <line number> The Line in the configuration file to be executed. Comments and blank lines are considered lines in the file.



*-s and -l are mutually exclusive.*

-i Continue executing commands even when errors are detected.

-f <config file path> The directory containing the command file that is to be executed. The default path is the current working directory.

<filename> The name of the command file that is to be executed. There is no default filename. This parameter is required.

<device> The IP address or hostname of the bridge/router that will execute the commands.

- b Specifies that after the configuration file is copied to the bridge/router or switch a bcmctrl -reboot is executed.
- t:<reboot timeout> Specifies a reboot time out period. If the device does not boot within the reboot timeout period (default: 600 seconds ) bcmloadconfig returns an error.

### **bcmnbrus**

*Syntax* `bcmnbrus <port> [-NoSecurity] [-NoAuthentication]`

*Description* The bcmnbrus utility launches the Upgrade Link application backend process.

*Values*

- <port> Specifies the TCP socket on which the client communicates with the server. On UNIX systems you can add this command to cron and on Windows 95/98/NT systems this command can be running as a service.

*Options*

- NoSecurity Indicates that the bcmnbrus utility will allow connections from all IP addresses.
- NoAuthentication Specifies that bcmnbrus will not prompt for a user name and password.

### **bcmrestore**

*Syntax* `bcmrestore [both | primary | secondary] [options] <device>`

*Description* The bcmrestore utility restores the Enterprise OS software from a backup on the network management station to the bridge/router or switch. The software, including the image and configuration files, is copied to the bridge/router, and the primary boot source is set to the restored directory.

*Values*

- both Restores both the primary and secondary boot sources. This value is the default.
- primary Restores the primary boot source.
- secondary Restores the secondary boot source.
- <device> Indicates the IP address or hostname of the bridge/router or switch.

*Options*

- ftp | -tftp Specifies the file transfer protocol to be used in the restore process.
- NoF[ormat] Does not format the drive before restore.
- NoR[eboot] Does not reboot when restoration is complete.
- U[naccept] Rejects a previously accepted automatically recoverable upgrade by swapping the primary and test boot sources.



**-new\_hw** Used to restore software to a new bridge/router or switch. Use this option when a failed bridge/router or switch is exchanged for a new one. After IP and SNMP connectivity is established, use this option to copy the original software to the new bridge/router or switch.

## **bcmsetup**

*Syntax* For UNIX:

```
bcmsetup <packages> [install_directory]
```

For Windows:

```
bcmsetup <drive:> [all | bcm | nat]
```

*Description* The bcmsetup utility places the latest version of the Enterprise OS Upgrade Management Utilities on the network management station. It also sets up the initial package definitions for use by Transcend. You must be root to run the bcmsetup utility.

*Values*

all	Installs both the utilities and package definitions (bcm and nat).
bcm	Enterprise OS Upgrade Management Utilities.
nat	Package definitions for use by Transcend.

*Options*

[Install\_directory] Defines the directory where the utilities and other files set up with bcmsetup are to be located.  
UNIX only

*Default*

For UNIX, unless an alternate installation directory is specified, the utilities are installed in the /usr/3Com/bcm directory.

For Windows, the utilities are always installed in \usr\3Com\bcm.

<drive:> Identifies the target drive where the utilities and other files set up with bcmsetup are to be located.

## **bcmsysupgrade**

*Syntax* bcmsysupgrade [options] <stage> <device>

*Description* The bcmsysupgrade utility is a master script that assists you in upgrading a bridge/router to the latest version of software and/or firmware. The bcmsysupgrade utility uses many of the other Enterprise OS Upgrade Utilities to perform a complete upgrade of a bridge/router over the network.

*Values*

<stage>

-s:from_nb	Downloads configuration files from the bridge/router.
-s:update	Upgrades configuration files on the network management station.
-s:to_nb	Uploads configuration and image files to the bridge/router.
-s:test_boot *	Test boots the upgraded configuration.

-s:accept*	Accepts the upgrade (cannot be used with -s:reject stage).
-s:reject*	Rejects the upgrade (cannot be used with -s:accept stage).
-s:upgrade_cec_fw*	Upgrades the NETBuilder II CEC firmware.
-s:upgrade_io_fw*	Upgrades the I/O firmware.
<device>	Specifies the IP address or hostname of the target bridge/router.



*Stages with an asterisk may reboot the bridge/router. The -s:accept stage only reboots manual and patch upgrades.*

#### Options

-EncryptionLicenseRead	Specifies that the encryption license agreement has been read and accepted. This flag must be used when upgrading to any package with encryption.
-ftp   -tftp	Specifies the file transfer protocol to be used in the backup process. The default is FTP for bridge/routers running Enterprise OS software version 11.1 or above. The default is TFTP for bridge/routers running Enterprise OS software version 11.0 or lower.
-d	Runs bcmdiagnose utility first.
-f	Forces action, and ignores warnings. Use with extreme caution!
-I	Upgrades boot image only. The default is images and configurations.
-k:<package>	Package type to upgrade to. For <package>, use the two-letter designator printed on the CD-ROM. The default is to use the package being upgraded from.
-m	Specifies a manually recoverable upgrade. The default is automatic recovery.
-t	Timeout value in seconds (defaults to 600, the range is 480 to 720 seconds).
-new_hw	Indicates the replacement with like hardware. (Examples, CEC with DPE, OCNB with OCNB)
-V:<version upgrading to>	When upgrading to a software version other than the default, you must enter the software version you are upgrading to. The default version is the same as the version of the upgrade software. Run "bcmdiagnose" to determine the version.

#### bcmuname

*Syntax* bcmuname [options] <device>[:<slot> | <drive>]

*Description* The `bcmuname` utility displays system information about the specified bridge/router or switch or Intelligent I/O module (IIO). If no options are specified, all the device-level options are printed.

*Values*

<device>	Specifies either the hostname or the IP address of the bridge/router.
<slot>	Specifies slot of an I/O module within the bridge/router. This parameter is optional and is used only with the options marked with (IIO).
<drive>	Specifies the storage device (usually a flash drive) attached to a bridge/router. This parameter is optional. When you specify letters A: or B: they are assumed to be drive letters, any numeric character is assumed to be a slot designator.

*Options*

-2	Prints the @m mac address (used in <code>bcmcp</code> ) (IIO).
-@	Prints the @M mac address (used in <code>bcmcp</code> ) (IIO).
-a	Prints all the above information (IIO).
-c	Prints the contact information.
-d	Prints the tftp directory that will be used by <code>bcmcp</code> .
-f:<sys_filename>	Displays system information based on the contents of the specified <path>/sys file.
-l	Prints the machine location.
-M	Prints the memory type.
-m	Prints the machine platform name (IIO).
-n	Prints the node name.
-r	Prints the software release (IIO).
-R	Prints the major software release.
-s	Prints the software system name.
-t	Prints the software or firmware type.
-w	Prints the firmware release.



*If an option is required, it must be specified in very stage of the upgrade process.*

## **bcmupdate**

*Syntax* `bcmupdate -f:<from_path> -t:<to_path> [options]`

*Description* The `bcmupdate` utility converts the bridge/router or switch configuration files that work with an older version of software to files that work with the newer version of software. 3Com recommends that this utility only be invoked with the `bcmsysupgrade` utility script.

*Values*

-f:<path>	Path to upgrade from.
-t:<path>	Path to upgrade to.

*Options*

-v:<version>	Version to upgrade from.
--------------	--------------------------

-V:<version>	Version to upgrade to.
-p:<platform>	Bridge/router platform type.
-m	Saves user macros.
-n	Prints trace messages.

When using the bcmupdate option on a Windows95, Windows98, or Windows NT version 4.0 system, the following files are copied but not converted or changed:

bgp	bgpnet	bgpol	smt
bgpas	dir	bgppeer	
ds	egp	dua	
iineighb	ipns	area	
iistuff	systemna	iicurcui	
user	name	NatMap	

The filenames are numbers in the es directory, and the text files are located in the filter directory.

## UpgradeLink

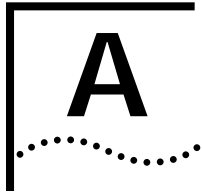
*Syntax* UpgradeLink [-NoSecurity | -NoAuthentication]

*Description* The Upgrade Link utility runs the Upgrade Link application and launches your default web browser. On Windows, it launches the 3Com TFTP server that is installed with the utilities.

Upgrade Link is an easy to use GUI for upgrading, backing up, or restoring software on a single bridge/router.

### *Options*

-NoSecurity	Indicates that the bcmnbrus utility will allow connections from all IP addresses.
-NoAuthentication	Specifies that bcmnbrus will not prompt for a user name and password.



# TROUBLESHOOTING

This appendix describes error codes and messages that may be displayed during the upgrade process as a result of running the `bcmdiagnose` utility or when network dependencies have not been met.

---

## Getting Help

**For UNIX**, to obtain help information about a utility, use:

```
<utility> -h
```

Help is available in HTML or (UNIX) man pages.

## Man Pages

On a UNIX system, access the man pages by entering:

```
man bcm-intro
```

To access the man pages for a specific utility, use:

```
man <NMU_name>
```

where <NMU\_name> is the name of the upgrade utility.

## HTML Help

To access the HTML help, enter the following URL in your browser:

```
/usr/3Com/bcm/gui/hlp/bcm-intro.html
```

Or to access help for a specific utility, use:

```
/usr/3Com/bcm/gui/hlp/<NMU_name>.html
```

For more information about using the Enterprise OS Upgrade Management Utilities, see Chapter 8.

---

## General Troubleshooting Error Messages

**The master boot block startup value is set to monitor. This is not a supported value.**

Meaning: The master boot block startup value is set to monitor.

Action: Make sure that your `bcmconfig <ipaddr> master -startup` value is set to `try boot once` or `try forever`.

**The primary boot block must access the boot file locally. That is, all files must physically reside on the NETBuilder.**

Meaning: The primary boot source is set to boot from the network.

Action: Set the primary boot source to local. Make sure the `bcmconfig <ipaddr> primary -bootdevice` value is set to either `localA` or `localB`.

**The required file(s) <ipaddress>:<drive>:<config file path> could not be located.**

Meaning: The bcmtest utility was unable to verify the presence of a file or directory.

Action: Make sure that the required files and directories are available to the bcmtest utility.

## Return Codes from bcmdiagnose

The bcmdiagnose utility can display the following exit return codes:

**Table 6** bcmdiagnose Return Codes

Code	Meaning
0	The operation was successful.
1	A command line parsing error occurred.
2	A command line argument is invalid.
3	A installation error occurred.
4	A Enterprise OS Upgrade Management utility failed.
5	The device is not responding.
6	Internal parsing error.
7	A UNIX command failed.
8	The device configuration is incompatible with the operation.
9	The attempted operation is unsafe.
10	No arguments in a function call.
11	No sys file was found.
12	The boot image was not found.
13	The boot image is bad.
14	The module upgrade failed.
15	The module failed to reboot.
16	The boot image is not set.
17	Missing device address (DNS name or IP address).
18	The Enterprise OS software is not installed.
19	Error installing a Enterprise OS SW or FW package.
20	An error occurred during a UNIX file copy.
21	Enterprise OS software installation not performed.
22	Failed to perform a software upgrade.
22	Failed to perform firmware upgrade.
23	Test-Boot and/or reboot timed-out.
24	The Upgrade of the device and image is not supported.
25	A critical file was missing or corrupted in a file transfer.

## Hardware-Related Messages

**The XX package must have 20 MB of memory installed on the CEC or DPE module. There is only 12 MB available.**

Meaning: The bcmsysupgrade utility cannot continue because it does not detect a CEC 20 or DPE in the system. The software package requires a CEC 20 or DPE module.

Action: If you have a CEC 20 module, run the Memory Expansion Board utility supplied with the memory upgrade by putting the diskette in the floppy drive and entering `bt memupgrd.29k`. The program updates the EPROM.

**The hardware configuration of this NETBuilder could not be confirmed.**

Meaning: Your hardware may not support the software package you are upgrading to. The bcmsysupgrade script allows the upgrade to proceed even if the hardware configuration is not recommended.

Action: Ensure that the bridge/router meets the hardware requirements for the package you are upgrading to, and that it is on the recommended upgrade migration path.

**The NETBuilder hardware will not safely support the upgrade.**

Meaning: The hardware is not sufficient to safely support the software upgrade, and the bridge/router configuration is not on the upgrade migration path.

Action: Contact your 3Com supplier for information about a hardware upgrade.

## Installation Troubleshooting Messages

The troubleshooting messages in this section are displayed during installation.

### Installing the Enterprise OS Upgrade Management Utilities

**Testing the Enterprise OS Upgrade Utilities installation.**

Meaning: This is an introductory message displayed when the bcmdiagnose utility is initiated.

Action: None.

**There is a problem with the installation of the Enterprise OS Upgrade Utilities. The path /usr/3Com/bcm/bin and usr/3Com/common/bin should be in the PATH environment variable.**

Meaning: The installation process has searched for certain utilities in /usr/3Com/bcm/bin and /usr/3Com/common/bin directories but cannot find them unless the path /usr/3Com/bcm/bin is first.

Action: Check that /usr/3Com/bcm/bin and /usr/3Com/common/bin have been added in the path environment variable.

**There is a problem with the installation of the Enterprise OS Upgrade Utilities. The path /usr/3Com/bcm/bin should be first in the PATH environment variable.**

Meaning: The installation process cannot find the necessary directories unless the path /usr/3Com/bcm/bin is first.

Action: Check that /usr/3Com/bcm/bin is first in the path environment variable.

**There is a problem with the installation of the Enterprise OS Upgrade Utilities. The location of the Enterprise OS Upgrade Utilities was not added to the path environment variable or the directory does not contain all the required programs.**

Meaning: The installation process cannot find the utilities because it does not know where to look for them.

Action: Check that a location for the utilities was specified in the path environment variable.

**There is a problem with the installation of the Enterprise OS Upgrade Utilities. The version numbers of the Enterprise OS Upgrade Utilities are not consistent.**

Meaning: The bcmdiagnose utility has assumed that the version of the Enterprise OS Upgrade Management Utilities in bcmcommon.sh is correct and has checked that each executable utility has the same version number. At least one utility is different.

Action: Check that you have specified version number for the utilities you are installing correctly.

### Determining Connectivity

#### Pinging <IP address>

Meaning: This is an introductory message that appears when the utilities are attempting to reach a bridge/router with an IP address specified on the command line.

Action: None.

**The NETBuilder did not respond to a ping. Make sure the IP address or host name is correct and that the NETBuilder is reachable via IP.**

Meaning: The device that the utilities were trying to reach did not respond.

Action: Ensure the device can be reached using IP.

**The NETBuilder responded to ping.**

Meaning: The device which was specified in the IP address is reachable.

Action: None.

### Validating the SNMP Service Configuration

#### Testing SNMP read access

Meaning: This is an introductory message. Check to see if the SNMP Service is active on the bridge/router.

Action: None.

**The NETBuilder is not responding to SNMP get requests. Ensure that the SNMP Service is configured on the NETBuilder and that you have read and write access via SNMP. Also check the values of the community strings in the /etc/snmp.cfg file. They should match the NETBuilder's SNMP community strings.**

Meaning: The bcmdiagnose utility has attempted to verify whether the bridge/router specified by the <IP address> value has been configured.

Action: Configure the SNMP server on your bridge/router to allow read access to your network management station. See the Network Management chapter in *Using NETBuilder Family Software*.



**The bridge/router is not responding to SNMP set requests. Ensure that the SNMP service is configured on the bridge/router and that you have read and write access via SNMP. Also check the values of the community strings in the /etc/snmp.cfg file. They should match the bridge/router's SNMP community strings.**

Meaning: The bcmdiagnose utility has attempted to verify whether the bridge/router specified by the <IP address> value has been configured.

Action: Configure the SNMP server on your bridge/router to allow write access to your network management station. See the Network Management chapter in *Using NETBuilder Family Software*.

#### **SNMP read access OK**

Meaning: There is no problem with SNMP configuration on the bridge/router.

Action: None.

#### **Testing SNMP write access**

Meaning: This is an introductory message. Check to see if SNMP Service is active on the bridge router.

Action: None.

#### **SNMP write access OK**

Meaning: There is no problem with SNMP configuration on the bridge/router.

Action: None.

### **Testing the NMS/ TFTP Configuration**

#### **Creating an Upgrade File**

##### **Testing file transfers using TFTP**

Meaning: This is an introductory message displayed as the bcmdiagnose utility begins its test.

Action: None.

**The TFTP safe directory is <tftpboot\_dir>. Make sure that the TFTP safe dir exists.**

Meaning: The TFTP safe directory is the root directory under which the utilities will store your bridge/router files.

Action: Check that your TFTP safe directory exists.

**The directory <tftpboot\_dir> does not exist. Create <tftpboot\_dir> with full read/write/create file permissions. Make sure that this directory has the proper file access permissions and is being used by the TFTP server.**

Meaning: The bcmdiagnose utility has attempted to create a test file using the TFTP safe directory and has failed.

Action: Assign full read/write/create file access permissions to the TFTP directory.

#### **Creating "test3.com"**

Meaning: This information message is displayed while the UNIX copy command tries to create the test file.

Action: None.

**Could not remove "test3.com". Check that <tftpboot\_dir> and subdirectories have full read/write/create file permissions**

Meaning: The UNIX remove command could not delete the test file.

Action: Assign full read/write/create file access permissions to the directories.

**Could not create "test3.com". Check that <tftpboot\_dir> and subdirectories have full read/write/create file permissions.**

Meaning: The UNIX copy command could not create the test file.

Action: Assign full read/write/create file access permissions to the directories.

**The file "test3.com" was not created with read access. Make sure <tftpboot\_dir> has full read/write/create file permissions.**

Meaning: When the UNIX copy command created the file, read access was not assigned.

Action: Assign full read/write/create file access permissions to the directories.

**The file "test3.com" was not created with write access. Make sure <tftpboot\_dir> has full read/write/create file permissions.**

Meaning: When the UNIX copy command created the file, write access was not assigned.

Action: Assign full read/write/create file access permissions to the directories.

### Uploading an Upgrade File

**Could not remove "<ipaddress> | DNSname>:a:/test3.com". Check that the NETBuilder media is not write protected and that "<ipaddress> | DNSname>:a:/test3.com" is not the name of a directory on the NETBuilder.**

Meaning: The bcmrm utility could not delete the file on the bridge/router.

Action: Make sure that your floppy disk write protect tab allows writing to the diskette.

**Copying TestFile from the NMS to "<ipaddress> | DNSname>:a:/test3.com".**

Meaning: This is a status message.

Action: None.

**The bcmcp command could not write the file "testfile" on NAddress or DNS name. Make sure there is a flash or floppy drive installed and that it is not write protected.**

Meaning: The bcmcp utility has been denied write access to the bridge/router.

Action: Make sure there is a flash or floppy diskette installed and that it is not write-protected.

**The file "<ipaddress> | DNSname>:a:/test3.com" is not present on the brouter even though bcmcp did not report an error.**

Meaning: The bcmtest utility could not locate the file on the bridge/router.

Action: Check with your systems administrator.

**The checksums of "test3.com" and "<ipaddress> | DNSname>:a:/test3.com" are different even though bcmcp did not report an error.**

Meaning: The bcmsum utility reported differing checksums on the local and remote test files.

Action: Check your network connection for possible corruption on the line.

**The bcmcp command could not reliably copy the "test3.com" file to the bridge/router.**

Meaning: This is an information message.

Action: None.

## Downloading an Upgrade File

**\$local TestFile could not be removed. Make sure <tftpboot\_dir> and "test3.com" have full read/write/create file permissions.**

Meaning: The UNIX remove command could not delete the test file.

Action: Assign full read/write/create file access permissions to the directories.

**The bcmcp command could not write the file "testfile" on the NMS. Check that the file access permissions are read/write/create in the TFTP server safe directory. Make sure there is enough space available.**

Meaning: The bcmcopy utility could not write the test file.

Action: Assign full read/write/create file access permissions to the directories. The file "test3Com" is not present on the NMS even though bcmcp did not report an error.

**The file "test3Com" is not present on the NMS even though bcmcp did not report an error.**

Meaning: The UNIX test command could not validate that the test file exists on the TFTP safe directory.

Action: Check with your systems administrator.

**The checksums of "test3.com" and "<ipaddress> | DNSname>:a:/test3.com" are different even though bcmcp did not report an error.**

Meaning: The bcsum utility reported differing checksums on the local and remote test files.

Action: Check with your systems administrator.

**The bcmcp command could not reliably copy the file "testfile" to the NMS.**

Meaning: This is an information message.

Action: None.

**Could not remove file "<ipaddress> | DNSname>:a:/test3.com". Check that the NETBuilder media is not write protected and that "<ipaddress> | DNSname>:a:/test3.com" is not the name of a directory on the NETBuilder.**

Meaning: The bcmrm utility could not delete the test file.

Action: Check with your systems administrator.

**"test3.com" could not be removed. Make sure <tftpboot\_dir> and "test3.com" have full read/write/create permissions.**

Meaning: The UNIX remove command could not delete the test file.

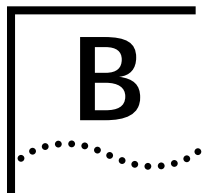
Action: Assign full read/write/create file access permissions to the directories.

**File transfers using TFTP are OK.**

Meaning: No problem was found with TFTP file transfers between the network management station and bridge/router.

Action: None.





# CHOOSING A SOFTWARE PACKAGE

This chapter lists software packages from 8.0 through 11.2 and provides recommended equivalent packages in 11.3.

## NETBuilder II Upgrade Migration Path

Table 7 outlines the recommended migration path from previous software packages to the latest packages supported in version 11.3. Use this table to identify the new software package that is most similar to the package you are currently using. Packages are identified by the two-letter designator of the version string, which is found on your product CD-ROM disk label.

You can also identify the software package using:

```
bcmuname -R <device>
```

Where <device> is the IP address or hostname of the system you are planning to upgrade. Or enter the Enterprise OS user interface command:

```
SHow -SYS VERSION
```

**Table 7** NETBuilder II Software Package Migration to 11.3

Recommended Upgrade		Notes
From Version 8.0	To Version 11.3	
LM	DW (DPE), DE (DPE) or DS (DPE)	The DE package has all the features of DW plus 56-bit encryption. The DS package has all the features of DW plus 128-bit encryption. A hardware upgrade to a DPE module is required.
LT	DW (DPE), DE (DPE) or DS (DPE)	The DE package has all the features of DW plus 56-bit encryption. The DS package has all the features of DW plus 128-bit encryption. A hardware upgrade to a DPE module is required.
CP	DW (DPE), DE (DPE) or DS (DPE)	The DE package has all the features of DW plus 56-bit encryption. The DS package has all the features of DW plus 128-bit encryption. A hardware upgrade to a DPE module is required.
WM	DW (DPE), DE (DPE) or DS (DPE)	The DE package has all the features of DW plus 56-bit encryption. The DS package has all the features of DW plus 128-bit encryption. A hardware upgrade to a DPE module is required.
WT	DW (DPE), DE (DPE) or DS (DPE)	The DE package has all the features of DW plus 56-bit encryption. The DS package has all the features of DW plus 128-bit encryption. A hardware upgrade to a DPE module is required.

(continued)

**Table 7** NETBuilder II Software Package Migration to 11.3

<b>Recommended Upgrade</b>		<b>Notes</b>
FF	DW (DPE), DE (DPE) or DS (DPE)	The DE package has all the features of DW plus 56-bit encryption. The DS package has all the features of DW plus 128-bit encryption. A hardware upgrade to a DPE module is required.
CX	AC (DPE)	A hardware upgrade to a DPE module is required.
AP	AC (DPE)	A hardware upgrade to a DPE module is required.
<b>From Version 8.1</b>		<b>To Version 11.3</b>
LM	DW (DPE), DE (DPE) or DS (DPE)	The DE package has all the features of DW plus 56-bit encryption. The DS package has all the features of DW plus 128-bit encryption. A hardware upgrade to a DPE module is required.
LT	DW (DPE), DE (DPE) or DS (DPE)	The DE package has all the features of DW plus 56-bit encryption. The DS package has all the features of DW plus 128-bit encryption. A hardware upgrade to a DPE module is required.
CP	DW (DPE), DE (DPE) or DS (DPE)	The DE package has all the features of DW plus 56-bit encryption. The DS package has all the features of DW plus 128-bit encryption. A hardware upgrade to a DPE module is required.
WM	DW (DPE), DE (DPE) or DS (DPE)	The DE package has all the features of DW plus 56-bit encryption. The DS package has all the features of DW plus 128-bit encryption. A hardware upgrade to a DPE module is required.
WT	DW (DPE), DE (DPE) or DS (DPE)	The DE package has all the features of DW plus 56-bit encryption. The DS package has all the features of DW plus 128-bit encryption. A hardware upgrade to a DPE module is required.
FF	DW (DPE), DE (DPE) or DS (DPE)	The DE package has all the features of DW plus 56-bit encryption. The DS package has all the features of DW plus 128-bit encryption. A hardware upgrade to a DPE module is required.
CX	AC (DPE)	A hardware upgrade to a DPE module is required.
AP	AC (DPE)	A hardware upgrade to a DPE module is required.
<b>From Version 8.2/8.3</b>		<b>To Version 11.3</b>
CP	DW (DPE), DE (DPE) or DS (DPE)	The DE package has all the features of DW plus 56-bit encryption. The DS package has all the features of DW plus 128-bit encryption. A hardware upgrade to a DPE module is required.
FF	DW (DPE), DE (DPE) or DS (DPE)	The DE package has all the features of DW plus 56-bit encryption. The DS package has all the features of DW plus 128-bit encryption. A hardware upgrade to a DPE module is required.
CX	AC (DPE)	A hardware upgrade to a DPE module is required.
AP	AC (DPE)	A hardware upgrade to a DPE module is required.
WA	DW (DPE), DE (DPE) or DS (DPE)	The DE package has all the features of DW plus 56-bit encryption. The DS package has all the features of DW plus 128-bit encryption. A hardware upgrade to a DPE module is required.

(continued)

**Table 7** NETBuilder II Software Package Migration to 11.3

<b>Recommended Upgrade</b>		<b>Notes</b>
<b>From Version 9.0/9.1</b>	<b>To Version 11.3</b>	
CP	DW (DPE), DE (DPE) or DS (DPE)	The DE package has all the features of DW plus 56-bit encryption. The DS package has all the features of DW plus 128-bit encryption. A hardware upgrade to a DPE module is required.
FF	DW (DPE), DE (DPE) or DS (DPE)	The DE package has all the features of DW plus 56-bit encryption. The DS package has all the features of DW plus 128-bit encryption. A hardware upgrade to a DPE module is required.
CX	AC (DPE)	A hardware upgrade to a DPE module is required.
AP	AC (DPE)	A hardware upgrade to a DPE module is required.
<b>From Version 9.3/9.3.1</b>	<b>To Version 11.3</b>	
DW (DPE)	DW (DPE), DE (DPE) or DS (DPE)	The DE package has all the features of DW plus 56-bit encryption. The DS package has all the features of DW plus 128-bit encryption. A hardware upgrade to a DPE module is required.
CP (CEC)	DW (DPE), DE (DPE) or DS (DPE)	The DE package has all the features of DW plus 56-bit encryption. The DS package has all the features of DW plus 128-bit encryption. A hardware upgrade to a DPE module is required.
FF (CEC)	DW (DPE), DE (DPE) or DS (DPE)	The DE package has all the features of DW plus 56-bit encryption. The DS package has all the features of DW plus 128-bit encryption. A hardware upgrade to a DPE module is required.
CX (DPE)	AC (DPE)	
AP (DPE)	AC (DPE)	
<b>From Version 10.1</b>	<b>To Version 11.3</b>	
DW (DPE)	DW (DPE), DE (DPE) or DS (DPE)	The DE package has all the features of DW plus 56-bit encryption. The DS package has all the features of DW plus 128-bit encryption.
CP (CEC)	DW (DPE), DE (DPE) or DS (DPE)	The DE package has all the features of DW plus 56-bit encryption. The DS package has all the features of DW plus 128-bit encryption. A hardware upgrade to a DPE module is required.
FP (CEC)	DW (DPE), DE (DPE) or DS (DPE)	The DE package has all the features of DW plus 56-bit encryption. The DS package has all the features of DW plus 128-bit encryption. A hardware upgrade to a DPE module is required.
CX (DPE)	AC (DPE)	
IA (CEC)	AC (DPE)	A hardware upgrade to a DPE module is required.
AP (DPE)	AC (DPE)	
<b>From Version 10.3</b>	<b>To Version 11.3</b>	
DW (DPE)	DW (DPE), DE (DPE) or DS (DPE)	The DE package has all the features of DW plus 56-bit encryption. The DS package has all the features of DW plus 128-bit encryption.

(continued)

**Table 7** NETBuilder II Software Package Migration to 11.3

Recommended Upgrade		Notes
<b>From Version 11.0</b>	<b>To Version 11.3</b>	
AC (DPE)	AC (DPE)	
DW (DPE)	DW (DPE)	
DE (DPE)	DE (DPE) or DS (DPE)	The DE package has all the features of DW plus 56-bit encryption. The DS package has all the features of DW plus 128-bit encryption.
<b>From Version 11.1</b>	<b>To Version 11.3</b>	
AC (DPE)	AC (DPE)	
DW (DPE)	DW (DPE)	
DE (DPE)	DE (DPE) or DS (DPE)	The DE package has all the features of DW plus 56-bit encryption. The DS package has all the features of DW plus 128-bit encryption.
<b>From Version 11.2</b>	<b>To Version 11.3</b>	
AC (DPE)	AC (DPE)	
DW (DPE)	DW (DPE)	
DE (DPE)	DE (DPE) or DS (DPE)	The DE package has all the features of DW plus 56-bit encryption. The DS package has all the features of DW plus 128-bit encryption.

## SuperStack II NETBuilder Upgrade Migration Path

Table 8 outlines the recommended migration path from prior version software packages to the latest packages supported in version 11.3. Use this table to identify the new software package that is most similar to the package you are currently using.

Packages are identified by the two-letter designator of the version string, which is found on your product diskette label.

You can also identify the package using:

```
bcmuname -R <device>
```

Where <device> is the IP address or hostname of the system you are planning to upgrade. Or enter the Enterprise OS user interface command:

```
SHow -SYS VERsion
```



**Table 8** SuperStack II NETBuilder Bridge/Router Software Package Migration to 11.3

Model	Recommended Upgrade	Notes
<b>22x Series</b>	<b>From Version 8.0</b> BA, RB, BX, AR, CF or CX	<b>To Version 11.3</b> n/a There is no equivalent package in version 11.3.
	<b>From Version 8.1</b> BX, BF, AR, CF or CX	<b>To Version 11.3</b> n/a There is no equivalent package in version 11.3.
	<b>From Version 8.2/8.3</b> BX, BF, AA, AB, CF, CX	<b>To Version 11.3</b> n/a There is no equivalent package in version 11.3.
	<b>From Version 9.0/9.1/9.3/10.1</b> BX, BF, AA, AB, CF, CX	<b>To Version 11.3</b> n/a There is no equivalent package in version 11.3.
<b>32x Series</b>	<b>From Version 8.3/9.0/9.1/9.3</b> FD, BF CF	<b>To Version 11.3</b> n/a TE There is no equivalent package in version 11.3.
	<b>From Version 10.1</b> AF, BF CF	<b>To Version 11.3</b> n/a TE There is no equivalent package in version 11.3.
	<b>From Version 11.0</b> TE	<b>To Version 11.3</b> TE
	<b>From Version 8.0/8.1</b> BX, AR, CF	<b>To Version 11.3</b> n/a There is no equivalent package in version 11.3.
<b>42x Series</b>	<b>From Version 8.2/8.3</b> BX, BF, AB, or CF	<b>To Version 11.3</b> n/a There is no equivalent package in version 11.3.
	<b>From Version 9.0/9.1/9.3</b> BX, BF, AB, or CF, EE	<b>To Version 11.3</b> n/a There is no equivalent package in version 11.3.
	<b>From Version 10.1</b> BX, BF, AB, AA, CF	<b>To Version 11.3</b> n/a There is no equivalent package in version 11.3.
	<b>From Version 11.0</b> EE	<b>To Version 11.3</b> n/a There is no equivalent package in version 11.3.
	<b>From Version 8.3/9.0/9.1/9.3</b> BF, CF	<b>To Version 11.3</b> n/a There is no equivalent package in version 11.3.
<b>52x Series</b>	<b>From Version 10.1</b> AF, CF	<b>To Version 11.3</b> n/a There is no equivalent package in version 11.3.
	<b>From Version 11.0</b> TE	<b>To Version 11.3</b> n/a There is no equivalent package in version 11.3.

## SuperStack II NETBuilder SI Upgrade Migration Path

Table 9 outlines the recommended migration path from prior version software packages to the latest packages supported in version 11.3. Use this table to identify the new software package that is most similar to the package you are currently using.

Packages are identified by the two-letter designator of the version string, which is found on your product diskette label.

You can also identify the package using:

```
bcmuname -R <device>
```

Where <device> is the IP address or hostname of the system you are planning to upgrade. Or enter the Enterprise OS user interface command:

```
SHow -SYS VERSION
```

**Table 9** SuperStack II NETBuilder SI Bridge/Router Software Package Migration to 11.3

Recommended Upgrade		Notes
<b>From Version 10.0</b>	<b>To Version 11.3</b>	
BX	BF	
BF	BF	
AB	NW or NE	The NE package has all the features of NW plus encryption.
AF	AX	
CF	CF or CE	The CE package has all the features of CF plus encryption.
CX	AX	
<b>From Version 11.0</b>	<b>To Version 11.3</b>	
BF	BF	
NW	NW, NE or NS	The NE package has all the features of NW plus 56-bit encryption. The NS package has all the features of NW plus 128-bit encryption.
NE	NE or NS	The NS package has all the features of NE plus 128-bit encryption.
CF	CF, CE or CS	The CE package has all the features of the CF package plus 56-bit encryption. The CS package has all the features of the CF package plus 128-bit encryption.
CE	CE or CS	The CS package has all the features of the CE package plus 128-bit encryption.
AX	AX	
<b>From Version 11.1</b>	<b>To Version 11.3</b>	
BF	BF	
NW	NW, NE or NS	The NE package has all the features of NW plus 56-bit encryption. The NS package has all the features of NW plus 128-bit encryption.
NE	NE or NS	The NS package has all the features of NE plus 128-bit encryption.
CF	CF, CE or CS	The CE package has all the features of the CF package plus 56-bit encryption. The CS package has all the features of the CF package plus 128-bit encryption.
CE	CE or CS	The CS package has all the features of the CE package plus 128-bit encryption.
AX	AX	

**Table 9** SuperStack II NETBuilder SI Bridge/Router Software Package Migration to 11.3 (continued)

Recommended Upgrade		Notes
From Version 11.2	To Version 11.3	
BF	BF	
NW	NW, NE or NS	The NE package has all the features of NW plus 56-bit encryption. The NS package has all the features of NW plus 128-bit encryption.
NE	NE or NS	The NS package has all the features of NE plus 128-bit encryption.
CF	CF, CE or CS	The CE package has all the features of the CF package plus 56-bit encryption. The CS package has all the features of the CF package plus 128-bit encryption.
CE	CE or CS	The CS package has all the features of the CE package plus 128-bit encryption.
AX	AX	

### OfficeConnect NETBuilder Upgrade Migration Path

Table 10 outlines the recommended migration path from previous software package versions to the latest packages supported in version 11.3. Use this table to identify the new software package that is most similar to the package you are currently using.

Packages are identified by the two-letter designator of the version string, which is found on your product diskette label.

You can also identify the package using:

```
bcmuname -R <device>
```

Where <device> is the IP address or hostname of the system you are planning to upgrade. Or enter the Enterprise OS user interface command:

```
SHow -SYS VERsion
```

**Table 10** OfficeConnect Software Package Migration to 11.3

Recommended Upgrade		Notes
From Version 9.2	To Version 11.3	
BX	BF	
BF	BF	
AB	NW, NE, or NS	The NE package has all the features of NW plus 56-bit encryption. The NS package has all the features of NW plus 128-bit encryption.
OF	OF, OE, or OS	The OE package has all the features of OF plus 56-bit encryption. The OS package has all the features of the OF package plus 128-bit encryption.
n/a	VE	The VE package has 56-bit encryption.
From Version 9.3	To Version 11.3	
BX	BF	
BF	BF	
AB	NW, NE, or NS	The NE package has all the features of NW plus 56-bit encryption. The NS package has all the features of NW plus 128-bit encryption.
OF	OF, OE, or OS	The OE package has all the features of OF plus 56-bit encryption. the OS package has all the features of OF plus 128-bit encryption.
AF	AF	

**Table 10** OfficeConnect Software Package Migration to 11.3

Recommended Upgrade		Notes
FD	FD	
n/a	VE	VE has 56-bit encryption.
<b>From Version 10.1</b>	<b>To Version 11.3</b>	
BX	BF	
BF	BF	
AB	NW, NE or NS	The NE package has all the features of NW plus 56-bit encryption. the NS package has all the features of NW plus 128-bit encryption.
OF	OF, OE or OS	The OE package has all the features of OF plus 56-bit encryption. The OS package has all the features of OF plus 128-bit encryption.
AF	AF	
FD	FD	
n/a	VE	The VE package has 56-bit encryption.
<b>From Version 10.2 (model 13x only)</b>	<b>To Version 11.3</b>	
BX	BF	
AB	NW, NE, or NS	The NE package has all the features of NW plus 56-bit encryption. The NS package has all the features of NW plus 128-bit encryption.
OF	OF, OE, or OS	The OE package has all the features of OF plus 56-bit encryption. the OS package has all the features of OF plus 128-bit encryption.
n/a	VE	The VE package has 56-bit encryption.
<b>From Version 11.0</b>	<b>To Version 11.3</b>	
BF	BF	
NW or NE	NW, NE, or NS	The NE package has all the features of NW plus 56-bit encryption. The NS package has all the features of NW plus 128-bit encryption.
OF or OE	OF, OE, or OS	The OE package has all the features of OF plus 56-bit encryption. the OS package has all the features of OF plus 128-bit encryption.
VE	VE	The VE package has 56-bit encryption.
<b>From Version 11.1</b>	<b>To Version 11.3</b>	
BF	BF	
NW or NE	NW, NE, or NS	The NE package has all the features of NW plus 56-bit encryption. The NS package has all the features of NW plus 128-bit encryption.
OF or OE	OF, OE, or OS	The OE package has all the features of OF plus 56-bit encryption. the OS package has all the features of OF plus 128-bit encryption.
VE	VE	The VE package has 56-bit encryption.
<b>From Version 11.2</b>	<b>To Version 11.3</b>	
BF	BF	
NW or NE	NW, NE, or NS	The NE package has all the features of NW plus 56-bit encryption. The NS package has all the features of NW plus 128-bit encryption.
OF or OE	OF, OE, or OS	The OE package has all the features of OF plus 56-bit encryption. the OS package has all the features of OF plus 128-bit encryption.
VE	VE	The VE package has 56-bit encryption.

## PathBuilder Upgrade Migration Path

Table 11 outlines the recommended migration path from previous software packages to the latest packages supported in version 11.3. Use this table to identify the new software package that is most similar to the package you are currently using. Packages are identified by the two-letter designator of the version string, which is found on your product CD-ROM disk label.

You can also identify the software package using:

```
bcmuname -R <device>
```

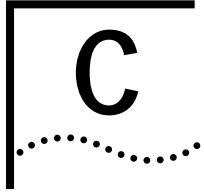
Where <device> is the IP address or hostname of the system you are planning to upgrade. Or enter the Enterprise OS user interface command:

```
SHow -SYS VERSION
```

**Table 11** PathBuilder Software Package Migration to 11.3

<b>Recommended Upgrade</b>	
<b>From Version 11.1.1</b>	<b>To Version 11.3</b>
PE	PE
PS	PS
PW	PW
<b>From Version 11.2</b>	<b>To Version 11.3</b>
PE	PE
PS	PS
PW	PW





# MOUNTING THE CD-ROM ON A UNIX PLATFORM

This appendix describes how to mount the CD-ROM for UNIX Solaris 2.5.x, HP-UX 10.x and IBM AIX 4.1.x through 4.2.x operating systems.

---

## Mounting the CD-ROM on Solaris 2.5.x

If you are mounting the CD-ROM from a drive that is directly connected to the network management station where you have installed the Enterprise OS Upgrade Management Utilities, enter the commands in this section. If you are mounting the CD-ROM remotely, proceed to "Mounting from a Remote CD-ROM Drive."

### Mounting a Local CD-ROM Drive

To mount the CD-ROM from a local drive, follow these steps:

- 1 Insert the CD-ROM containing the bridge/router software into the CD-ROM drive.
- 2 Mount the CD-ROM in a directory in your file system. You must have Superuser (root) access throughout the installation process.

a At the command prompt, enter:

```
/usr/bin/su
```

b At the Password prompt, enter your root password.

Solaris 2.5.x uses a Volume Management Utility that by default mounts the CD-ROM under the `/cdrom` directory.

- 3 Verify that the mount occurred by entering:

```
ls /cdrom
```

The display shows the `cdrom0` directory.

- 4 If Solaris Volume Management is not installed, or has been deactivated, mount the CD-ROM drive by entering:

```
mkdir /cdrom/cdrom0 (if you have not already done so)  
mount -r -F hsfs /dev/sr0 /cdrom/cdrom0
```

After your CD-ROM has been mounted, you are ready to begin installing the software.

### Mounting from a Remote CD-ROM Drive

On the remote system, make sure that the CD-ROM is properly connected and powered up. To allow other systems to access the remote system, follow these steps:

- 1 Insert the CD-ROM containing the bridge/router software into the CD-ROM drive.
- 2 Mount the CD-ROM in a directory in your file system. You must have Superuser (root) access to complete the installation process.

- a At the command prompt on the remote system, enter:

```
/usr/bin/su
```

- b At the Password prompt, enter your root password.

Solaris 2.5.x uses a Volume Management Utility that by default mounts the CD-ROM under the /cdrom directory.

- 3 Verify that the mount occurred by entering:

```
ls /cdrom
```

The display shows the cdrom0 directory.

- 4 Verify that Solaris Volume Management is installed by entering:

```
ps -aux | grep vold
```

or

```
ps -ef | grep vold
```

If /usr/sbin/vold is displayed, then Volume Management is installed. Proceed to step 5.

If Solaris Volume Management is not installed, or has been deactivated, mount the CD-ROM drive by entering:

```
mkdir /cdrom (if you have not already done so)
```

```
mount -r -F hsfs /dev/sr0 /cdrom/cdrom0
```

- 5 Make the CD-ROM directory (/cdrom/cdrom0) available for Network File System (NFS) clients.

Edit the /etc/dfs/dfstab file by adding the following line:

```
share -F nfs -o ro /cdrom/cdrom0
```

- a Change directories to /etc/init.d and enter:

```
./nfs.server start
```

- b Enter:

```
shareall
```

or

```
exportfs -a
```



*You may need to start the NFS daemons.*

- 6 On the local network management station (the one where you are installing the software), at the command prompt, enter:

```
mkdir /cdrom/remote (if you have not already done so)
```

```
mount -r <remote_system>:/cdrom/cdrom0 /cdrom/remote
```

For <remote\_system>, enter the IP address or host name of the remote system that does not have a CD-ROM drive.

- 7 You can verify that the mount occurred by entering:

```
cd /cdrom
```

- 8 To display a directory of the CD-ROM, enter:

```
ls
```

After your CD-ROM has been mounted, you are ready to begin installing the software.



## Mounting the CD-ROM on HP-UX 10.x

If you are mounting the CD-ROM from a drive that is directly connected to the network management station where you have installed the Enterprise OS Upgrade Management Utilities, enter the commands in this section. If you will mount the CD-ROM remotely, proceed to "Mounting from a Remote CD-ROM Drive."

### Mounting from a Local CD-ROM Drive

To mount the CD-ROM from a local drive, follow these steps:

- 1 Open a command window.
- 2 Insert the CD-ROM.
- 3 Confirm that the CD-ROM is mounted by entering:

```
mount | grep cdrom
```

If you receive no output command, you must mount the CD-ROM by entering:

```
su
mkdir /cdrom (if you have not already done so)
```

If you are running HP-UX 10.10, enter:

```
mount -r -t cdfs /dev/dsk/c0t2d0 /cdrom
```

If you are running HP-UX 10.20, enter:

```
mount -r /dev/dsk/c0t2d0 /cdrom
```

### Mounting from a Remote CD-ROM Drive

To mount the CD-ROM from a remote drive, follow these steps:

- 1 Open a command window.
- 2 Insert the CD-ROM.
- 3 Mount the CD-ROM by entering:

```
su
mkdir /cdrom (if you have not already done so)
```

If you are running HP-UX 10.x, enter:

```
mount -r /dev/dsk/c0t2d0 /cdrom
```

- 4 Create the `/etc/exports` file if it does not already exist.
- 5 Add the following line to the `/etc/exports` file, if you have not already done so:

```
/cdrom -ro
```

- 6 If the `/etc/exports` file existed previously, enter:

```
/usr/etc/exportfs -a
```

- 7 If the `/etc/exports` file did not exist previously, reboot to become an NFS server.
- 8 On the local machine (the machine on which you are installing the bridge/router software), enter:

```
su
mkdir /cdrom (if you have not already done so)
mount -r <remote machine>:/cdrom /cdrom
```

For `<remote_system>`, enter the IP address or host name of the remote system that does not have a CD-ROM drive.

## Mounting the CD-ROM on IBM AIX 4.1.x Through 4.2.x

If you are mounting the CD-ROM from a drive that is directly connected to the network management station, enter the commands in this section. If you will mount the CD-ROM remotely, proceed to "Mounting from a Remote CD-ROM Drive."

### Mounting from a Local CD-ROM Drive

To mount the CD-ROM from a local drive, follow these steps:

- 1 Open a command window.
- 2 Insert the CD-ROM.
- 3 Confirm that the CD-ROM is mounted by entering:

```
mount | grep cdrom
```

If you receive no output command, you must mount the CD-ROM by entering:

```
su
mkdir /cdrom (if you have not already done so)
mount -v cdrfs -r /dev/cd0 /cdrom
```

### Mounting from a Remote CD-ROM Drive

To mount the CD-ROM from a remote drive, follow these steps:

- 1 Open a command window.
- 2 Insert the CD-ROM.
- 3 Enter:

```
su
mkdir /cdrom (if you have not already done so)
mount -v cdrfs -r /dev/cd0 /cdrom
```

- 4 Create the /etc/exports file if it does not already exist.
- 5 Add the following line to the /etc/exports file, if you have not already done so:

```
/cdrom -ro
```

- 6 If the /etc/exports file existed previously, enter:

```
/usr/sbin/exportfs -a
```

- 7 If the /etc/exports file did not exist previously, reboot to become an NFS server.

- 8 On the local machine (the machine on which you are installing the bridge/router utilities), enter:

```
su
mkdir /cdrom/remote (if you have not already done so)
mount -n <remote machine>:/cdrom /cdrom/remote
```

For <remote\_system>, enter the IP address or host name of the remote system that does not have a CD-ROM drive.

---

## Unmounting the CD-ROM

To unmount the CD-ROM, follow these steps:

- 1 Make sure that no processes (shelltool, commandtool or any other application) have /cdrom as the current working directory.
- 2 Make sure that you have Superuser (root) access. If you do not have this access, at the command prompt enter:

```
/usr/bin/su
```

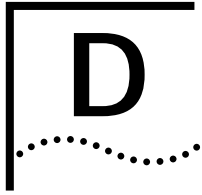
- 3 Unmount the CD-ROM as root.

On Solaris 2.5.x with or without "vold" running, at the # prompt enter:

```
umount /cdrom/cdrom0
```

```
eject /cdrom
```





# TECHNICAL SUPPORT

3Com provides easy access to technical support information through a variety of services. This appendix describes these services.

Information contained in this appendix is correct at time of publication. For the most recent information, 3Com recommends that you access the 3Com Corporation World Wide Web site.

---

## Online Technical Services

3Com offers worldwide product support 24 hours a day, 7 days a week, through the following online systems:

- World Wide Web site
- 3Com Knowledgebase Web Services
- 3Com FTP site
- 3Com Bulletin Board Service (3Com BBS)
- 3Com Facts<sup>SM</sup> Automated Fax Service

## World Wide Web Site

To access the latest networking information on the 3Com Corporation World Wide Web site enter this URL into your Internet browser:

**<http://www.3com.com/>**

This service provides access to online support information such as technical documentation and software library, as well as support options that range from technical education to maintenance and professional services.

## 3Com Knowledgebase Web Services

This interactive tool contains technical product information compiled by 3Com expert technical engineers around the globe. Located on the World Wide Web at **<http://knowledgebase.3com.com>**, this service gives all 3Com customers and partners complementary, round-the-clock access to technical information on most 3Com products.

## 3Com FTP Site

Download drivers, patches, software, and MIBs across the Internet from the 3Com public FTP site. This service is available 24 hours a day, 7 days a week.

To connect to the 3Com FTP site, enter the following information into your FTP client:

- Hostname: **ftp.3com.com**
- Username: **anonymous**
- Password: **<your Internet e-mail address>**



*You do not need a user name and password with Web browser software such as Netscape Navigator and Internet Explorer.*

### **3Com Bulletin Board Service**

The 3Com BBS contains patches, software, and drivers for 3Com products. This service is available through analog modem or digital modem (ISDN) 24 hours a day, 7 days a week.

#### **Access by Analog Modem**

To reach the service by modem, set your modem to 8 data bits, no parity, and 1 stop bit. Call the telephone number nearest you:

Country	Data Rate	Telephone Number	Country	Data Rate	Telephone Number
Australia	Up to 14,400 bps	61 2 9955 2073	Japan	Up to 14,400 bps	81 3 5977 7977
Brazil	Up to 28,800 bps	55 11 5181 9666	Mexico	Up to 28,800 bps	52 5 520 7835
France	Up to 14,400 bps	33 1 6986 6954	P.R. of China	Up to 14,400 bps	86 10 684 92351
Germany	Up to 28,800 bps	4989 62732 188	Taiwan, R.O.C.	Up to 14,400 bps	886 2 377 5840
Hong Kong	Up to 14,400 bps	852 2537 5601	U.K.	Up to 28,800 bps	44 1442 438278
Italy	Up to 14,400 bps	39 2 27300680	U.S.A.	Up to 53,333 bps	1 847 262 6000

#### **Access by Digital Modem**

ISDN users can dial in to the 3Com BBS using a digital modem for fast access up to 64 Kbps. To access the 3Com BBS using ISDN, call the following number:

**1 847 262 6000**

### **3Com Facts Automated Fax Service**

The 3Com Facts automated fax service provides technical articles, diagrams, and troubleshooting instructions on 3Com products 24 hours a day, 7 days a week.

Call 3Com Facts using your Touch-Tone telephone:

**1 408 727 7021**

### **Support from Your Network Supplier**

If you require additional assistance, contact your network supplier. Many suppliers are authorized 3Com service partners who are qualified to provide a variety of services, including network planning, installation, hardware maintenance, application training, and support services.

When you contact your network supplier for assistance, have the following information ready:

- Product model name, part number, and serial number
- A list of system hardware and software, including revision levels
- Diagnostic error messages
- Details about recent configuration changes, if applicable

If you are unable to contact your network supplier, see the following section on how to contact 3Com.

**Support from 3Com**

If you are unable to obtain assistance from the 3Com online technical resources or from your network supplier, 3Com offers technical telephone support services. To find out more about your support options, please the 3Com technical telephone support phone number at the location nearest you.

When you contact 3Com for assistance, have the following information ready:

- Product model name, part number, and serial number
- A list of system hardware and software, including revision levels
- Diagnostic error messages
- Details about recent configuration changes, if applicable

Here is a list of worldwide technical telephone support numbers:

Country	Telephone Number	Country	Telephone Number
<b>Asia Pacific Rim</b>			
Australia	1 800 678 515	P.R. of China	10800 61 00137 or 021 6350 1590
Hong Kong	800 933 486	Singapore	800 6161 463
India	+61 2 9937 5085	S. Korea	
Indonesia	001 800 61 009	From anywhere in S. Korea:	00798 611 2230
Japan	0031 61 6439	From Seoul:	(0)2 3455 6455
Malaysia	1800 801 777	Taiwan, R.O.C.	0080 611 261
New Zealand	0800 446 398	Thailand	001 800 611 2000
Pakistan	+61 2 9937 5085		
Philippines	1235 61 266 2602		
<b>Europe</b>			
From anywhere in Europe, call:	+31 (0)30 6029900 phone		
	+31 (0)30 6029999 fax		
<b>Europe, South Africa, and Middle East</b>			
From the following countries, you may use the toll-free numbers:			
Austria	0800 297468	Netherlands	0800 0227788
Belgium	0800 71429	Norway	800 11376
Denmark	800 17309	Poland	00800 3111206
Finland	0800 113153	Portugal	0800 831416
France	0800 917959	South Africa	0800 995014
Germany	0800 1821502	Spain	900 983125
Hungary	00800 12813	Sweden	020 795482
Ireland	1800 553117	Switzerland	0800 55 3072
Israel	1800 9453794	U.K.	0800 966197
Italy	1678 79489		
<b>Latin America</b>			
Argentina	AT&T +800 666 5065	Mexico	01 800 CARE (01 800 2273)
Brazil	0800 13 3266	Peru	AT&T +800 666 5065
Chile	1230 020 0645	Puerto Rico	800 666 5065
Colombia	98012 2127	Venezuela	AT&T +800 666 5065
<b>North America</b>			
	1 800 NET 3Com (1 800 638 3266)		
	Enterprise Customers: 1 800 876-3266		

## Returning Products for Repair

Before you send a product directly to 3Com for repair, you must first obtain an authorization number. Products sent to 3Com without authorization numbers will be returned to the sender unopened, at the sender's expense.

To obtain an authorization number, call or fax:

Country	Telephone Number	Fax Number
Asia, Pacific Rim	+65 543 6500	+65 543 6348
Europe, South Africa, and Middle East	+31 30 6029900	+31 30 6029999
Latin America	1 408 326 2927	1 408 326 3355
From the following countries, you may call the toll-free numbers; select option 2 and then option 2:		
Austria	0800 297468	
Belgium	0800 71429	
Denmark	800 17309	
Finland	0800 113153	
France	0800 917959	
Germany	0800 1821502	
Hungary	00800 12813	
Ireland	1800 553117	
Israel	1800 9453794	
Italy	1678 79489	
Netherlands	0800 0227788	
Norway	800 11376	
Poland	00800 3111206	
Portugal	0800 831416	
South Africa	0800 995014	
Spain	900 983125	
Sweden	020 795482	
Switzerland	0800 55 3072	
U.K.	0800 966197	
U.S.A. and Canada	1 800 NET 3Com (1 800 638 3266)	1 408 326 7120 (not toll-free)
	Enterprise Customers: 1 800 876 3266	

23 MAR 99



# GLOSSARY

- automatic recovery** An upgrade method that copies the primary boot source to the NMS, then copies the upgraded software back to the bridge/router as the test boot source. After a successful test boot, the upgraded software is designated as the primary boot source while the original software still present on the flash memory, is designated the secondary boot source. If the upgrade fails, the bridge/router automatically reboots from the original software. Automatic recovery requires enough flash memory to hold two software sets.
- backup** Copying the software, including the images and configuration files, from the bridge/router to the NMS using Upgrade Link or the bcmbackup utility.
- backup location** See default directory structure.
- baseline** A copy of the bridge/router configuration files stored in a directory on the network management station. Baselining establishes a known good configuration set by checking for consistency between similar configuration files on the network management station and the NETBuilder bridge/router. Baselining assumes that the versions of software and firmware running on the NETBuilder system have not changed since the baseline was established.
- BCM** Boot Change Management. Individual command-line utilities and scripts that use SNMP to perform EEPROM boot block and file manipulation operations on the NETBuilder bridge/router and between the NETBuilder bridge/router and Network Management Stations. This includes file transfer using TFTP.
- bcm utilities** See NETBuilder Upgrade Management Utilities.
- bcmupdate** An upgrade management utility that is used to upgrade configuration files on a network management station.
- boot image** A software file that is loaded into DRAM and executed by a bridge/router. The main boot image files are named boot.29k and boot.68k.
- BOOTP** Bootstrap Protocol. Allows a bridge/router to obtain its IP address dynamically from a network management station instead of from local EEPROM.
- boot source** A reference to a directory on the bridge/router where the boot and configuration files are stored. You can set and view boot source information using the bcmconfig utility or the Sysconf command.
- CCS** Compact Configuration Storage. An ASN.1-based file format used to store bridge/router configuration information.
- configuration files** Files on the bridge/router that store parameter values and settings you have set in the software.

<b>default directory structure</b>	The default directory structure specifies where to find new installations of your bridge/router software and backups of your bridge/router software on the NMS.
<b>dual-image</b>	The ability of a bridge/router to store two sets of image and configuration files.
<b>FTP</b>	File Transfer Protocol. Allows the transfer of files between a host and a client.
<b>image file</b>	See boot image.
<b>manual recovery</b>	An upgrade method that copies the primary boot source to the NMS, formats the flash memory on the bridge/router, then copies the upgraded software back to the bridge/router. If the upgrade fails, you must restore the software from the backup on the NMS. Manual recovery requires enough flash memory to hold one software set, compared to automatic recovery which must have enough memory for two sets.
<b>network management station</b>	A UNIX or Windows system that has a TFTP server running in addition to software, such as the NETBuilder Upgrade Management Utilities, to manage your network.
<b>NMS</b>	See network management station.
<b>offline upgrade</b>	A method of copying configuration files to a network management station, updating those files to the latest release, and then copying them back to the bridge/router with the new images while the bridge/router remains operational.
<b>primary boot source</b>	The default boot source used to boot the bridge/router.
<b>primary image</b>	The boot image specified in the primary boot directory.
<b>restore</b>	A method of copying a software backup from the network management station to a bridge/router using Upgrade Link or the bcmrestore utility and returning a bridge/router to its previous operational state. Restoring can be used when different versions of software have been installed on the bridge/router.
<b>Remote Upgrade Utilities</b>	BCM utilities expressly used for remote upgrading. These utilities allow you to manipulate NETBuilder bridge/router boot blocks and the NETBuilder bridge/router file system via the SNMP protocol. These utilities also allow you to reboot the NETBuilder bridge/router and to obtain accurate status information.
<b>secondary boot source</b>	The boot source used in the event of primary boot source failure.
<b>secondary image</b>	The software image designated for use by the bridge/router if the primary image is inaccessible or cannot be booted. The secondary image is specified as the local boot file in the secondary boot directory.
<b>single-image</b>	The capability of a bridge/router to store only one set of software images and configuration files.
<b>SNMP</b>	Simple Network Management Protocol. An Internet protocol that defines a way to monitor and set configuration and runtime parameters.
<b>software set</b>	A combination of bootable images for a particular version of bridge/router software along with the configuration files that have been created for the operation of the bridge/router. For version 11.0 and later, the software includes web application files like Quick Step VPN.

<b>software package</b>	A defined subset of bridge/router services and protocols that are appropriate for a particular model of the NETBuilder bridge/router family of products.
<b>split image files</b>	A boot image that spans multiple diskettes. Split images occur on a few SuperStack II NETBuilder bridge/router packages (for example, the CF package prior to 9.1). If you are upgrading to one of these older packages, bcminstall will automatically recombine the split image before performing your upgrade.
<b>Telnet</b>	Terminal Emulation Link Protocol.
<b>TEM/TNCS</b>	3Com's Transcend Enterprise Manager/Transcend Network Control Service, which runs on Windows NT, Windows 95, Solaris, HP, and IBM platforms.
<b>test boot source</b>	The boot source used during the test boot process.
<b>test boot image</b>	The software image specified as the local boot file in the test source.
<b>TFTP</b>	Trivial File Transfer Protocol. Allows file transfer between an IP host and an IP client.
<b>upgrade</b>	A method to bring a bridge/router up-to-date with later versions of software and firmware without the need for reconfiguring individual bridge/router parameters and settings. The upgrade is performed using the NETBuilder Upgrade Management Utilities or Transcend.
<b>Upgrade Management Utilities</b>	A set of utilities to upgrade bridge/routers or switches. Some functions performed by the utilities include copying software, firmware, and configuration files from the bridge/router, and upgrading configuration files. In addition, the utilities can configure the boot sources on the bridge/router, execute the test boot, and configure the bridge/router boot sources to use the software in standard boot situations.
<b>Upgrade Link Backend</b>	The server application that fetches HTML and Java class files, runs the PERI scripts, and accesses the file system.
<b>Upgrade Link Front end</b>	The JAVA applet that runs in a browser. All the GUI components are part of the front end.
<b>Upgrade Migration Path</b>	The 3Com supported package for upgrading a bridge/router.
<b>WINTEL</b>	All windows on INTEL platforms including Windows 95, Windows 98 and Windows NT.



# INDEX

---

## Numbers

3Com bulletin board service (3Com BBS) 110  
3Com Knowledgebase Web Services 109  
3Com URL 109  
3ComFacts 110

---

## B

Back up verification 63  
bcmbackup 72  
    syntax 73  
bcmconfig 72  
    syntax 74  
bcmctrl 72  
    syntax 75  
bcmcdf 72, 76  
    syntax 76, 77  
bcmdiagnose 37, 72  
    return codes 86  
    syntax 77  
bcminstall 72  
    syntax 78  
bcmloadconfig 72, 79  
bcmrestore 44, 49, 73  
    rejecting upgrade 44, 49, 59  
    syntax 80  
bcmsetup 73  
    syntax 81  
bcmsum  
    syntax 81  
bcmssystemupgrade 40  
    repeating options 39  
    syntax 81  
bcmuname 73  
    syntax 82  
bcmupdate 73  
    syntax 83  
bulletin board service 110

---

## C

configuration, updating files 10  
conventions  
    notice icons, About This Guide 7  
    text, About This Guide 8

---

## D

disk storage requirements  
    network management station 26, 36, 52

---

## F

fax service (3ComFacts) 110  
files

---

backing up 72  
    locations 38  
    log files 72  
firmware  
    I/O module upgrade 43, 44, 47, 49  
    installing on network management station 72  
    monitoring bcm status 72  
    parameters, managing 72  
    rebooting 72  
    test booting 72  
    test media storage 72  
    testing media storage 72  
    upgrade 41, 45  
FTP file transfer setup 52

---

## H

hardware  
    replacing  
        setting up SNMP 66  
    setting up IP address 66  
    troubleshooting messages 87

---

## I

identifying upgrade problems 72  
images  
    updating files 10  
IP address  
    setting up 66

---

## L

log file 72  
logging function 72

---

## M

manual recovery  
    NETBuilder II upgrade 47  
manual recovery, NETBuilder II upgrade 43  
MIBs 109  
migration paths  
    NETBuilder II 93  
    OfficeConnect 99  
    PathBuilder 101  
    SuperStack II 96, 98

---

## N

NETBuilder II  
    migration paths 93  
    remote upgrade 43, 47  
    upgrading 73  
    using bcmdiagnose 37  
NETBuilder Upgrade Management Utilities  
    files location 38

---

network management station  
    disk storage requirements 26, 36, 52  
network supplier support 110

---

## O

online technical services 109

---

## P

patch upgrade  
    installation with auto recovery 58  
patch upgrade, installation with auto recovery 57  
PathBuilder  
    image-only upgrade 51  
    migration paths 101  
    upgrading 73  
PathBuilder upgrade  
    disk storage requirements 26  
privilege level  
    changing SNMP access 46, 48  
    changing SNMP access to files 66

---

## R

restoring bridge/router to previous operational state 73  
returning products for repair 112

---

## S

Simple Network Management Protocol. See SNMP  
SNMP  
    changing file access 66  
    changing manager access 46, 48  
    setting up 66  
        for NETBuilder II upgrade  
software  
    converting files on network management station 73  
    displaying information 73  
    installing on network management station 72  
    patch installation with auto recovery 57, 58  
    rules and support limitations 11  
    upgrading 31  
SuperStack II, upgrading 73

---

## T

technical support  
    3Com Knowledgebase Web Services 109  
    3Com URL 109  
    bulletin board service 110  
    fax service 110

---

- network suppliers 110
- product repair 112
- TFTP file transfer setup 52
- Transcend Enterprise Manager 25
- Transcend Network Control Services 25
- troubleshooting messages
  - connectivity 88
  - creating an upgrade file 89
  - downloading an upgrade file 91
  - hardware-related 87
  - SNMP configuration 88
  - TFTP connection 89
  - uploading an upgrade file 90
  - utilities installation 87
  - validating safety 85

---

## U

- update script function 72
- upgrade
  - bcmsysupgrade options 39, 40
  - identifying problems 72
  - migration paths
    - NETBuilder II 93
    - PathBuilder 101
  - patch installation
    - with auto recovery 57, 58
  - upgrading with bcmsysupgrade utility 73
- Upgrade Link
  - running locally 26
  - running remotely 26
  - Settings page 27
  - Status page 27
- Upgrade Link application 25
- Upgrade Management Utilities
  - accessing and downloading 71
  - accessing MAN pages 73, 85
  - commands 72
  - installation
    - troubleshooting messages 87
    - with bcmsetup 73
  - syntax 72
- Upgrade verification 29
- URL 109

---

## W

- World Wide Web (WWW) 109

## 3Com Corporation LIMITED WARRANTY

---

### HARDWARE

3Com warrants its hardware products to be free from defects in workmanship and materials, under normal use and service, for the following lengths of time from the date of purchase from 3Com or its authorized reseller:

Network Interface Cards	Lifetime
Other hardware products *unless otherwise specified above	1 year*
Spare parts and spares kits	90 days

If a product does not operate as warranted above during the applicable warranty period, 3Com shall, at its option and expense, repair the defective product or part, deliver to Customer an equivalent product or part to replace the defective item, or refund to Customer the purchase price paid for the defective product. All products that are replaced will become the property of 3Com. Replacement products may be new or reconditioned. Any replaced or repaired product or part has a ninety (90) day warranty or the remainder of the initial warranty period, whichever is longer.

---

### SOFTWARE

3Com warrants that the software programs licensed from it will perform in substantial conformance to the program specifications therefor for a period of ninety (90) days from the date of purchase from 3Com or its authorized reseller. 3Com warrants the media containing software against failure during the warranty period. No updates are provided. 3Com's sole obligation with respect to this express warranty shall be (at 3Com's discretion) to refund the purchase price paid by Customer for any defective software products, or to replace any defective media with software which substantially conforms to applicable 3Com published specifications. Customer assumes responsibility for the selection of the appropriate applications program and associated reference materials. 3Com makes no warranty or representation that its software products will meet Customer's requirements or work in combination with any hardware or applications software products provided by third parties, that the operation of the software products will be uninterrupted or error free, or that all defects in the software products will be corrected. For any third party products listed in the 3Com software product documentation or specifications as being compatible, 3Com will make reasonable efforts to provide compatibility, except where the non-compatibility is caused by a "bug" or defect in the third party's product.

---

### YEAR 2000 WARRANTY

In addition to the Hardware Products Warranty and Software Products Warranty identified above, 3Com warrants that all Heritage 3Com products sold or licensed to Customer on and after January 1, 1998 that are date sensitive will continue performing properly with regard to such date data on and after January 1, 2000, provided that all other products used by Customer in connection or combination with the 3Com products, including hardware, software, and firmware, accurately exchange date data with the 3Com products, with the exception of those products identified at 3Com's Web site, <http://www.3com.com/products/yr2000.html>, as not meeting this standard. A product is considered a "Heritage 3Com product" if it is a member of a product family which was manufactured by 3Com prior to its merger with US Robotics Corporation. This Year 2000 limited warranty does not apply to Heritage US Robotics Corporation products. If it appears that any such product does not perform properly with regard to such date data on and after January 1, 2000, and Customer notifies 3Com before the later of April 1, 2000, or ninety (90) days after purchase of the product from 3Com or its authorized reseller, 3Com shall, at its option and expense, provide a software update which would effect the proper performance of such product, repair such product, deliver to Customer an equivalent product to replace such product, or if none of the foregoing is feasible, refund to Customer the purchase price paid for such product.

Any software update or replaced or repaired product will carry a Year 2000 Warranty for ninety (90) days or until April 1, 2000, whichever is later.

---

### OBTAINING WARRANTY SERVICE

Customer must contact 3Com's Corporate Service Center or an Authorized 3Com Service Center within the applicable warranty period to obtain warranty service authorization. Dated proof of purchase may be required. Products returned to 3Com's Corporate Service Center must be pre-authorized by 3Com with a Return Material Authorization (RMA) number marked on the outside of the package, and sent prepaid and packaged appropriately for safe shipment, and it is recommended that they be insured. The repaired or replaced item will be shipped to Customer, at 3Com's expense, not later than thirty (30) days after receipt of the defective product by 3Com.

*Dead- or Defective-on-Arrival.* In the event a product completely fails to function or exhibits a defect in materials or workmanship within the first forty-eight (48) hours of installation but no later than thirty (30) days after the date of purchase, and this is verified by 3Com, it will be considered dead- or defective-on-arrival (DOA) and a replacement shall be provided by advance replacement. The replacement product will normally be shipped not later than three (3) business days after 3Com's verification of the DOA product, but may be delayed due to export or import procedures. When an advance replacement is provided and Customer fails to return the defective product to 3Com within fifteen (15) days after shipment of the replacement, 3Com will charge Customer for the replacement product, at list price.

3Com shall not be responsible for any software, firmware, information, or memory data of Customer contained in, stored on, or integrated with any products returned to 3Com for repair, whether under warranty or not.

---

### WARRANTIES EXCLUSIVE

IF A 3COM PRODUCT DOES NOT OPERATE AS WARRANTED ABOVE, CUSTOMER'S SOLE REMEDY FOR BREACH OF THAT WARRANTY SHALL BE REPAIR, REPLACEMENT, OR REFUND OF THE PURCHASE PRICE PAID, AT 3COM'S OPTION. TO THE FULL EXTENT ALLOWED BY LAW, THE FOREGOING WARRANTIES AND REMEDIES ARE EXCLUSIVE AND ARE IN LIEU OF ALL OTHER WARRANTIES, TERMS, OR CONDITIONS, EXPRESS OR IMPLIED, EITHER IN FACT OR BY OPERATION OF LAW, STATUTORY OR OTHERWISE, INCLUDING WARRANTIES, TERMS, OR CONDITIONS OF MERCHANTABILITY, FITNESS FOR A PARTICULAR PURPOSE, AND SATISFACTORY QUALITY. 3COM NEITHER ASSUMES NOR AUTHORIZES ANY OTHER PERSON TO ASSUME FOR IT ANY OTHER LIABILITY IN CONNECTION WITH THE SALE, INSTALLATION, MAINTENANCE OR USE OF ITS PRODUCTS.

3COM SHALL NOT BE LIABLE UNDER THIS WARRANTY IF ITS TESTING AND EXAMINATION DISCLOSE THAT THE ALLEGED DEFECT IN THE PRODUCT DOES NOT EXIST OR WAS CAUSED BY CUSTOMER'S OR ANY THIRD PERSON'S MISUSE, NEGLIGENCE, IMPROPER INSTALLATION OR TESTING, UNAUTHORIZED ATTEMPTS TO REPAIR OR MODIFY, OR ANY OTHER CAUSE BEYOND THE RANGE OF THE INTENDED USE, OR BY ACCIDENT, FIRE, LIGHTNING, OR OTHER HAZARD.

---

### LIMITATION OF LIABILITY

TO THE FULL EXTENT ALLOWED BY LAW, 3COM ALSO EXCLUDES FOR ITSELF AND ITS SUPPLIERS ANY LIABILITY, WHETHER BASED IN CONTRACT OR TORT (INCLUDING NEGLIGENCE), FOR INCIDENTAL, CONSEQUENTIAL, INDIRECT, SPECIAL, OR PUNITIVE DAMAGES OF ANY KIND, OR FOR LOSS OF REVENUE OR PROFITS, LOSS OF BUSINESS, LOSS OF INFORMATION OR DATA, OR OTHER FINANCIAL LOSS ARISING OUT OF OR IN CONNECTION WITH THE SALE, INSTALLATION, MAINTENANCE,

USE, PERFORMANCE, FAILURE, OR INTERRUPTION OF ITS PRODUCTS, EVEN IF 3COM OR ITS AUTHORIZED RESELLER HAS BEEN ADVISED OF THE POSSIBILITY OF SUCH DAMAGES, AND LIMITS ITS LIABILITY TO REPAIR, REPLACEMENT, OR REFUND OF THE PURCHASE PRICE PAID, AT 3COM'S OPTION. THIS DISCLAIMER OF LIABILITY FOR DAMAGES WILL NOT BE AFFECTED IF ANY REMEDY PROVIDED HEREIN SHALL FAIL OF ITS ESSENTIAL PURPOSE.

---

**DISCLAIMER**

Some countries, states, or provinces do not allow the exclusion or limitation of implied warranties or the limitation of incidental or consequential damages for certain products supplied to consumers or the limitation of liability for personal injury, so the above limitations and exclusions may be limited in their application to you. When the implied warranties are not allowed to be excluded in their entirety, they will be limited to the duration of the applicable written warranty. This warranty gives you specific legal rights which may vary depending on local law.

---

**GOVERNING LAW**

This Limited Warranty shall be governed by the laws of the State of California, U.S.A. excluding its conflicts of laws principles and excluding the United Nations Convention on Contracts for the International Sale of Goods.

**3Com Corporation**, 5400 Bayfront Plaza, Santa Clara, CA 95052-8145 (408) 764-5000



## Free Manuals Download Website

<http://myh66.com>

<http://usermanuals.us>

<http://www.somanuals.com>

<http://www.4manuals.cc>

<http://www.manual-lib.com>

<http://www.404manual.com>

<http://www.luxmanual.com>

<http://aubethermostatmanual.com>

Golf course search by state

<http://golfingnear.com>

Email search by domain

<http://emailbydomain.com>

Auto manuals search

<http://auto.somanuals.com>

TV manuals search

<http://tv.somanuals.com>