

Art. 7906

Art. 7909

Art. 7910

D Gebrauchsanweisung

Teichfilter / Teichfilter mit Wasserspielpumpe WFP 3000 / WFP 5000

GB Operating Instructions

Pond Filter / Pond Filter with Fountain Pump WFP 3000 / WFP 5000

F Mode d'emploi

Filtre de bassin / Filtre de bassin avec pompe pour jets d'eau
WFP 3000 / WFP 5000

NL Gebruiksaanwijzing

Vijverfilter / Vijverfilter met waterspelpomp WFP 3000 / WFP 5000

S Bruksanvisning

Dammfilter / Dammfilter med Fontän Pump WFP 3000 / WFP 5000

I Istruzioni per l'uso

Filtro per laghetti / Filtro per laghetti con pompa per giochi d'acqua
WFP 3000 / WFP 5000

E Manual de instrucciones

Filtro para estanques / Filtro para estanques con bomba para
juegos de agua WFP 3000 / WFP 5000

P Instruções de manejo

Filtro para Lagos / Filtro para Lagos com bomba para fontes
WFP 3000 / WFP 5000

DK Brugsanvisning

Bassinfilter / Bassinfilter med springvandspumpe WFP 3000 /
WFP 5000

GARDENA Pond Filter / Pond Filter with Fountain Pump WFP 3000 / WFP 5000

Welcome to GARDENA aquamotion ...

Please note

Part I: Operating Instructions for Pond Filter
Part II: Operating Instructions for Pumps WFP 3000/5000

Part I: Operating Instructions for Pond Filter



Please read these operating instructions carefully and observe the notes given. Use the instructions to familiarise yourself with the equipment, the operating controls, their correct use, and the notes on safety.



For safety reasons, children under 16 as well as persons not familiar with these operating instructions should not use these Pond Filters.

→ Keep these operating instructions in a safe place.

Contents of instructions for Pond Filter

- 1. Where to Use Your Pond Filter 13
- 2. For Your Safety 13
- 3. What You Should Know About Ponds and Filters 14
- 4. How the Pond Filter Works 14
- 5. Using the Pond Filter for the First Time 15
- 6. Pond Filter Maintenance 15
- 7. Trouble-Shooting 16
- 8. Storing the Pond Filter 16
- 9. Service 20

1. Where to Use Your Pond Filter

Intended purpose

The GARDENA Pond Filter is designed exclusively for use in garden ponds in private, domestic gardens. It is intended for cleaning ponds either with or without fish.

Attention



The Pond Filter must not be used for industrial applications and in conjunction with chemicals, food, flammable and explosive substances.

2. For Your Safety

Positioning the Pond Filter Position the Pond Filter in the garden pond so that the Pond Filter is completely covered by water.

Comply with noise protection regulations Please comply with local noise protection regulations.

3. What You Should Know About Ponds and Filters

Excess growth of algae – murky pond

Garden ponds are not as deep as natural water features. The lack of depth means that a garden pond heats up and cools down much more quickly. These changes in temperature and environmental factors such as fertilisers, plant residues etc., are among the main causes of excess levels of nutrients and hence of growth of algae.

High density of fish stock

In garden ponds the density of fish stock per cubic meter is usually higher than in natural ponds. As the fish usually also receive more food than in their natural environment, the amount of pollution due to excrement is very high.

Decrease the level of nutrients and increase the oxygen supply

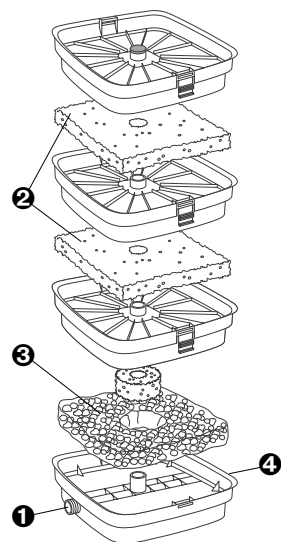
Excess growth of algae, as well as the high level of pollution due to fish excrement causes a lack of oxygen in your pond; its biological balance has been disturbed.

→ Problem: the level of nutrients in your pond is too high. The most effective solution to this problem is to decrease the level of nutrients available by means of a biological process and to remove excess nutrients while at the same time increasing the oxygen supply.

Installing a filter

The growth of algae can be restricted by installing a filter. Floating substances (e.g. floating algae), which cause the water to be murky, are filtered out and the water is purified. This helps the pond to regain its biological balance. However, existing algae (e.g. thread algae) visible at the time of installation must be skimmed off (e.g. with the GARDENA combisystem Pond Net, Art. No. 7933).

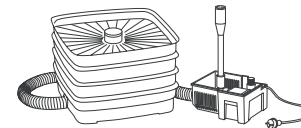
4. How the Pond Filter Works



- 1 Water inlet**
Connection for connecting the hose to the pump in the pond.
- 2 Mechanical coarse filtering**
Large particles of dirt are filtered out of the water by the foam filtering elements.
- 3 Mechanical fine filtering with Zeolith**
GARDENA Zeolith increases the surface area for more efficient cleaning.
- 4 Second connection**
For connecting two Pond Filters in parallel (the second connection is sealed with a plug at the factory).

5. Using the Pond Filter for the First Time

Initial operation:



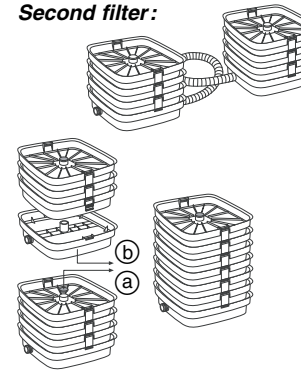
1. Screw the hose clockwise onto the thread G 3/4 (26,5 mm) of the pump.
2. Screw the hose clockwise onto the thread G 3/4 (26,5 mm) of the Pond Filter.
3. Position the Pond Filter and Pump in the garden pond so that the Pond Filter and basket of the pump are completely covered by water.

You can fill the pump basket with stones to make the pump more stable.

You can achieve the best cleaning results by using your Pond Filter in the dirtiest area of the pond.

We recommend using two filters for ponds larger than 16 m³ with slightly dirty water or for ponds larger than 8 m³ with very dirty water (ponds containing fish).

Second filter:



Operating two filters in parallel:

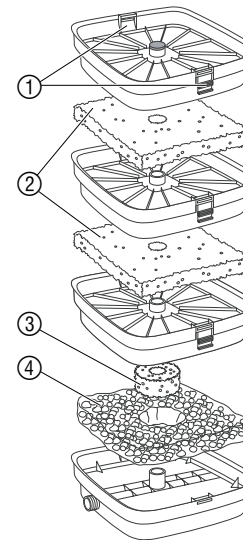
1. Screw another hose clockwise onto the second connection of the first Pond Filter.
2. Screw the other end of the hose onto the connection of the second Pond Filter.

Operating two filters in series:

1. Press out the cap ① of the lower Pond Filter from the inside.
2. Remove the lowest part of the filter ② from the top Pond Filter.
3. Position the second Pond Filter on top of the first Pond Filter.

6. Pond Filter Maintenance

Cleaning the Pond Filter:



The GARDENA Pond Filter is largely maintenance-free. However, it may require cleaning from time to time.

1. Unplug the pump from the mains.
2. Remove the Pond Filter from the pond.
3. Unscrew the hose clockwise.
4. Empty the Pond Filter completely.
5. Press in both clips ① at the same time and remove the top part of the filter.
6. Remove all other parts of the filter in the same way.
7. Remove the foam filter elements ② from the filter and rinse under running water.
8. Also clean the round foam filter element ③ under running water.
9. Remove the Zeolith ④ from the bottom part of the filter and clean (using saltwater, for example).
10. Reassemble the Pond Filter in the opposite order.
11. Screw the hoses back onto the Pond Filter and position in the pond (see "Using the Pond Filter for the First Time – Initial Operation").

To ensure the zeolith functions correctly, we recommend you replace or clean it every 6 months (e.g. in salt water).

GARDENA Zeolith, 1 l
GARDENA Zeolith, 5 l

Art. No. 7914
Art. No. 7915

7. Trouble-Shooting

Problem	Probable cause	Remedy
Water is not clear.	The floating material in the pond is brown and sinks to the bottom.	→ Remove algae and leaves from the pond, e.g. using the GARDENA combi-system Pond Net, Art. 7933.
	The pond is extremely dirty and full of excess nutrients.	1. Check the nitrate level, e.g. using the GARDENA Pond Test Set, Art. 7920. 2. If necessary, replace the water and clean the pond shell.
	Excess density of fish and animal stock.	As a guideline for fish stock the following rule applies: maximum length of fish 60 cm in 1m ³ of pond water.

If you have any problems with your Pond Filter, please contact our Service.

8. Storing the Pond Filter

- Wintering:**
1. Remove the Pond Filter from the pond, unscrew the hose clockwise and empty the Pond Filter completely.
 2. Store the Pond Filter away from frost.

Part II: Operating Instructions for Fountain Pump WFP 3000/5000



Please read these operating instructions carefully and observe the notes given. Use the instructions to familiarise yourself with the equipment, the operating controls, their correct use, and the notes on safety.



For safety reasons, children under 16 as well as persons not familiar with these operating instructions should not use these pumps.

→ Keep these operating instructions in a safe place.

Contents of instructions for Pump

1. The Applications Range of the GARDENA Fountain Pump	17
2. For Your Safety	17
3. Applications: Examples – System extensions – Product Recommendations	18
4. Using Your Pump for the first time	18
5. Pump Maintenance	19
6. Storing the Pump	19
7. Trouble-Shooting	19
8. Technical Data	20
9. Service	20

1. The Applications Range of the GARDENA Fountain Pump

Intended purpose

GARDENA Fountain Pumps have been designed for private use. They are not designed for operating watering tools and systems. The pumps may be used indoors as well as outdoors.

Attention



GARDENA Fountain Pumps have not been designed for constant use in the industrial sector. Corrosive, easily combustible, aggressive or explosive substances (e.g. petrol, petroleum, nitro thinner) as well as salt-water or food / drinking water must not be pumped.

2. For Your Safety

Operating the pump

The pump should be operated via a residual current device with a residual current rating of ≤ 30 mA (DIN VDE 0100-702 and 0100-738). The pump must be placed on solid, even ground. Please ask your electrician for his advice.

Mains power cables

Mains power cables should not have a smaller cross-section than a rubber sheathed cable of the designation H05 RNF. Extension cables must meet the requirements of DIN VDE 0620.

For Austria

In Austria power cables should correspond to ÖVE-EM 42, T2 (2000)/1979 § 22 according to § 2022.1. According to this standard pumps used in swimming pools and ponds should only be operated via an isolating transformer. Please contact your electrician.

For Switzerland

In Switzerland mobile appliances which are used outdoors, must be connected via a residual-current device.

Visual check

Before operating the pump, look to see if there is any damage of the pump (esp. regarding power cable and plug). A damaged pump must not be used. In case of damage, please have the pump checked by our GARDENA Service Centre or by an authorised electrician.

Check line voltage

Check line voltage. Data indicated on the type plate must match technical data of the mains supply.

Do not operate pump when there are people in the water

The pump must not be operated when there are people in the water.

Swimming pools and garden ponds

Swimming pools and garden ponds should be designed according to international and national design regulations. Please consult a professional electrician.

Do not use power cable to carry the pump

Do not use the power cable to carry the pump or to pull the plug out of the socket. Protect the power cable from heat, oil and sharp edges.

Disconnect plug

Please unplug the pump after operation and before carrying out any maintenance works.

Temperature of the liquid used

The temperature of the liquid used must not be below 4 °C or above 35 °C.

Wear and reduced output

Sand and other abrasive substances in the liquid cause increased wear and reduce the output of the pump.

Observe local noise prevention regulations

Please observe the local noise prevention regulations.

3. Applications: Examples – System extensions – Product Recommendations

Adaptable lamps

→ Example for application:
Underwater lighting of water jets and pond edges.

→ Products:
GARDENA Underwater Light Art. No. 7951
GARDENA *lightline* Transformers

Remote control

→ Example for application:
For operating water jets from the comfort of your patio or your living room.

→ Products:
GARDENA Remote Control Set Art. No. 7874
GARDENA Remote Control Socket Art. No. 7875

Information

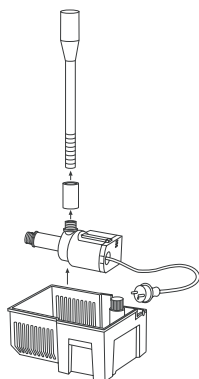
- Always unplug the pump first before working on it.
- Follow the Safety and Assembly Information attached to the operating instructions.

4. Using the Pump for the First Time

Pay attention to minimum water depth

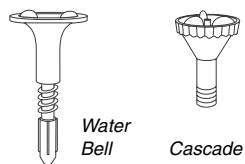
Please note the maximum submersion depth (see "Technical Data").

Installing the pump:



1. Place the pump in the tank.
2. Position the pump on a firm surface so that the upper edge of the basket is completely covered by water.
3. Screw the fountain onto the throttle valve.
4. Screw the fountain with throttle valve onto the pump.

Adjusting fountain:



1. Screw the fountain insert you want to install (either Water Bell or Cascade) into fountain.
2. Screw throttle valve on pump anti-clockwise (approx. one turn) until fountain is adjusted to correct position.
3. **Only if installing Water Bell:**
Screw Water Bell fountain insert into fountain until Waterbell creates the shape you want.

Starting the pump

Connect the power cable to a 230 V AC socket.

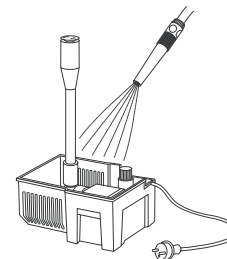
⚠ Caution! Pump will start running immediately!

Avoid dry operation

Avoid dry operation of the pump as dry running will produce undesirable heat and destroy the pump.

5. Pump Maintenance

Cleaning the pump and tank:

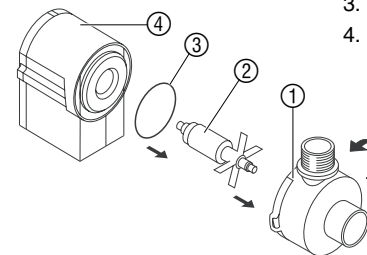


The tank and pump must be free of dirt.

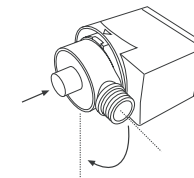
1. Unplug the pump from the mains.
2. Remove the pump from the water.
3. Rinse the pump and tank with a jet of water.

Information: Do not use any hard objects or strong detergents!

Removing dirt deposits from the pump:



1. Unplug the pump from the mains.
2. Remove the pump from the water.
3. Unscrew the hose clockwise from the threaded adapter.
4. Raise the pump slightly, twist and remove upwards.
5. Screw the pump housing ① anticlockwise as far as it will go and remove (do not tilt).
6. Pull the rotating unit ② out of the motor housing ④.
7. Remove all dirt deposits from the parts of the pump.
8. Insert the seal ③ into the groove of the motor housing ④.
9. Push the rotating unit ② back into the motor housing ④.
10. Fit the pump housing ① ensuring that the threaded adapter is in a horizontal position and then screw the housing down (pay attention to the markings).



6. Storing the Pump

Where to store

⚠ The pump should be stored out of the reach of children.



1. Remove the pump from the pond and store away from frost before the first frost sets in.
2. Clean and check the pump carefully.
3. Store the pump in a container filled with water.
The mains plug must not be submerged.

7. Trouble-Shooting

Blocked feed impeller

If the feed impeller becomes blocked, the pump and the filter should be cleaned (see "Pump Maintenance").

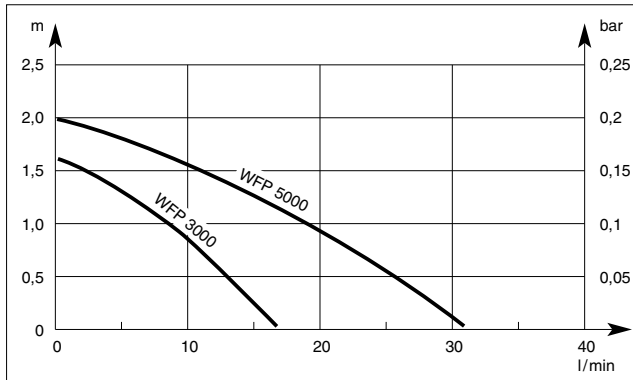
If you have any problems with your Pump, please contact our Service.

8. Technical Data

Type	WFP 3000	WFP 5000
Art. No.	7909	7910
Rated power	7.5 W	9.5 W
Flow	16.5 l/min	30.5 l/min
Max. delivery head	1.6 m	2.0 m
Max. submersion depth	1.0 m	1.0 m
Power cable	10 m H05 RNF	10 m H05 RNF
Fitting	26,5 mm (G 3/4) male thread	26,5 mm (G 3/4) male thread
Max. media temperature	35 °C	35 °C
Mains voltage	230 V	230 V
Frequency	50 Hz	50 Hz
Noise level $L_{WA}^{1)}$	48 dB(A)	48 dB(A)

1) Measuring method according to EN 60335-1

Performance characteristics



9. Service

Guarantee

GARDENA guarantees this product for 12 months (from date of purchase). This guarantee covers all serious defects of the unit that can be proved to be material or manufacturing faults. Under warranty we will either replace the unit or repair it free of charge if the following conditions apply:

- The unit must have been handled properly and in keeping with the requirements of the operating instructions.
- Neither the purchaser or a non-authorized third party have attempted to repair the unit.

Parts subject to wear (e.g. rotating unit) are excluded from this guarantee.

This manufacturer's guarantee does not affect the user's existing warranty claims against the dealer/seller.

If you have any problems with your Fountain Pump, please contact our Service or return the defective unit together with a short description of the problem – in case of guarantee, with a copy of the receipt – postage paid to one of the GARDENA Service Centres listed on the back of this leaflet.

Product liability

We expressly point out that, in accordance with the product liability law, we are not liable for any damage caused by our units if it is due to improper repair or if parts exchanged are not original GARDENA parts or parts approved by us, and, if the repairs were not carried out by a GARDENA Service Centre or an authorised specialist. The same applies to spare parts and accessories.

EU Certificate of Conformity

The undersigned

GARDENA Kress + Kastner GmbH · Hans-Lorenser-Str. 40 · D-89079 Ulm

hereby certifies that, when leaving our factory, the units indicated below are in accordance with the harmonised EU guidelines, EU standards of safety and product specific standards.

This certificate becomes void if the units are modified without our approval.

Description of the units: Fountain Pumps
Type: WFP 3000 / WFP 5000
Art. No.: 7909 / 7910
EU directives: Machinery Directive 98/37/EC
 Electromagnetic Compatibility 89/336/EC
 Low Voltage Directive 73/23/EC
 Directive 93/68/EC

Harmonised European standards: EN 292-1
 EN 292-2
 EN 60335-1
 EN 60335-2-41

Year of CE marking: 2000

Ulm, 20.11.2000

Thomas Heint
 Technical Dept. Manager

Deutschland

GARDENA Kress + Kastner GmbH
GARDENA Service
Hans-Lorenser-Straße 40
D-89079 Ulm
Produktfragen: (07 31) 490-123
Reparaturen: (07 31) 490-290

Argentina

Argensem S.A.
Venezuela 1075
(1618) El Talar - Buenos Aires

Australia

NYLEX Corporation Ltd.
25-29 Nepean Highway
P.O. Box 68
Mentone, Victoria 3194

Austria

GARDENA Österreich Ges. m.b.H.
Stettnerweg 11-15
2100 Korneuburg

Belgium

MARKT (Belgium) NV/SA
Sterrebeekstraat 163
1930 Zaventem

Brazil

M. Cassab
Av. das Nações Unidas, 20.882
Santo Amaro, CEP 04795-000
São Paulo - S.P.

Bulgaria / България

ДЕНЕКС ООД
бул. „Черни връх“ 43
София 1407

Canada

GARDENA Canada Ltd.
100, Summerlea Road
Brampton, Ontario
Canada L6T 4X3

Chile

Antonio Martinic Y CIA. LTDA.
Gilberto Fuenzalida 185 Loc.
Las Condes - Santiago de Chile

Costa Rica

Compania Exim
Euroiberioamericana S.A.
350 Sur del Automercado
Los Yoses
San Pedro

Cyprus

FARMOKIPIKI LTD
P.O. Box 7098
74, Digeni Akrita Ave.
1641 Nicosia

Czech Republic

GARDENA spol. s.r.o.
Ripská 20
62700 Brno

Denmark

GARDENA Danmark A/S
Naverland 8
2600 Glostrup

Finland

Habitec Oy
Martinkyläntie 52
01720 Vantaa

France

GARDENA France
Service Après-Vente
BP 50080
95948 ROISSY CDG Cedex

Great Britain

GARDENA UK Ltd.
27-28 Brenkley Way
Blezard Business Park
Seaton Burn
Newcastle upon Tyne
NE13 6DS

Greece

Agrokip G. Psomadopoulos & Co.
20, Lykourgou str.
Kallithea - Athens

Hungary

GARDENA Magyarország Kft.
Késmárk utca 22
1158 Budapest

Iceland

Heimilistaeki hf
Saetun 8
P.O. Box 5340
125 Reykjavik

Republic of Ireland

Michael McLoughlin & Sons
Hardware Limited
Long Mile Road
Dublin 12

Italy

GARDENA Italia S.r.l.
Via Donizetti 22
20020 Lainate (Mi)

Japan

KAKUDAI Mfg. Co. Ltd.
1-4-4, Itachibori Nishi-ku
Osaka 550

Luxembourg

Magasins Jules Neuberger
Grand Rue 30
Case Postale No. 12
Luxembourg 2010

Netherlands

MARKT (Holland) BV
Postbus 219
1380 AE Weesp

Neth. Antilles

Jonka Enterprises N.V.
Sta. Rosa Weg 196
P.O. Box 8200
Curaçao

New Zealand

NYLEX New Zealand Limited
Private Bag 94001
South Auckland Mail Centre
10 Offenhauser Drive
East Tamaki, Manukau

Norway

GARDENA Norge A/S
Postboks 214
2013 Skjetten

Poland

GARDENA Polska Sp. z o.o.
Szymanów 9 d
05-532 Baniocza

Portugal

MARKT (Portugal), Lda.
Recta da Granja do Marquês
Edif. GARDENA
Algueirão
2725-596 Mem Martins

Russia / Россия

АО АМИДА ТТЦ
ул. Мосфильмовская 66
117330 Москва

Singapore

Variware
Holland Road Shopping Centre
227-A 1st Fl., Unit 29
Holland Avenue
Singapore 1027

Slowenia / Croatia

Silk d.o.o. Trgovina
Brodišće 15
1236 Trzin

South Africa

GARDENA South Africa (Pty.) Ltd.
P.O. Box 11534
Vorna Valley 1686

Spain

ANMI Andreu y Miriam S.A.
Calle Pere IV, 111
08018 Barcelona

Sweden

GARDENA Svenska AB
Box 9003
20039 Malmö

Switzerland

GARDENA Kress + Kastner AG
Bitziberg 1
8184 Vachenbülach

Ukraine / Украина

АОЗТ АЛЬЦЕСТ
ул. Гайдара 50
г. Киев 01033

Turkey

Dost Diş Ticaret Müessillik A.Ş.
Yeşilbağlar Mah. Başkent
Cad. No. 26
Pendik - İstanbul

USA

GARDENA
3085 Shawnee Drive
Winchester, VA 22604

7906-20.960.02/0011
GARDENA Kress + Kastner GmbH
Postfach 27 47, D-89070 Ulm
<http://www.gardena.de>

T 305 512650 / Id.23701 / 03 J

Free Manuals Download Website

<http://myh66.com>

<http://usermanuals.us>

<http://www.somanuals.com>

<http://www.4manuals.cc>

<http://www.manual-lib.com>

<http://www.404manual.com>

<http://www.luxmanual.com>

<http://aubethermostatmanual.com>

Golf course search by state

<http://golfingnear.com>

Email search by domain

<http://emailbydomain.com>

Auto manuals search

<http://auto.somanuals.com>

TV manuals search

<http://tv.somanuals.com>