

3M™ MicroTouch™ Software MT 7 User Guide

For Microsoft® Windows®, Windows® CE,
and Linux® Operating Systems

Read and understand all safety information
contained in this document before using this product.

MicroTouch

3M

The information in this document is subject to change without notice. No part of this document may be reproduced or transmitted in any form or by any means, electronic or mechanical, for any purpose, without the express written permission of 3M Touch Systems, Inc. 3M may have patents or pending patent applications, trademarks, copyrights, or other intellectual property rights covering subject matter in this document. The furnishing of this document does not give you license to these patents, trademarks, copyrights, or other intellectual property except as expressly provided in any written license agreement from 3M Touch Systems, Inc.

The information provided in this document is intended as a guide only. For the latest detailed engineering specifications, please contact your 3M Touch Systems, Inc. Application Engineer. 3M Touch Systems, Inc. is committed to continually improving product designs, as a result, product specifications may be subject to change without notification.

"RoHS 2011/65/EU" means that the product or part does not contain any of the substances in excess of the maximum concentration values ("MCVs") in EU RoHS Directive 2011/65/EU, unless the substance is in an application that is exempt under EU RoHS. The MCVs are by weight in homogeneous materials. This information represents 3M's knowledge and belief, which may be based in whole or in part on information provided by third party suppliers to 3M.

NOTICE: Given the variety of factors that can affect the use and performance of a 3M Touch Systems, Inc. Product (the "Product"), including that solid state equipment has operation characteristics different from electromechanical equipment, some of which factors are uniquely within User's knowledge and control, it is essential that User evaluate the 3M Touch Systems, Inc. Product and software to determine whether it is suitable for User's particular purpose and suitable for User's method of application. 3M Touch Systems, Inc. statements, engineering/technical information, and recommendations are provided for User's convenience, but their accuracy or completeness is not warranted. 3M Touch Systems, Inc. products and software are not specifically designed for use in medical devices as defined by United States federal law. 3M Touch Systems, Inc. products and software should not be used in such applications without 3M Touch Systems, Inc. express written consent. User should contact its sales representative if User's opportunity involves a medical device application.

IMPORTANT NOTICE TO PURCHASER: Specifications are subject to change without notice. These 3M Touch Systems, Inc. Products and software are warranted to meet their published specifications from the date of shipment and for the period stated in the specification. **3M Touch Systems, Inc. makes no additional warranties, express or implied, including but not limited to any implied warranties of merchantability or fitness for a particular purpose.** User is responsible for determining whether the 3M Touch Systems, Inc. Products and software are fit for User's particular purpose and suitable for its method of production, including intellectual property liability for User's application. If the Product, software or software media is proven not to have met 3M Touch Systems, Inc. warranty, then 3M Touch Systems, Inc. sole obligation and User's and Purchaser's **exclusive remedy**, will be, at 3M Touch Systems, Inc. option, to repair or replace that Product quantity or software media or to refund its purchase price. 3M Touch Systems, Inc. has no obligation under 3M Touch Systems, Inc. warranty for any Product, software or software media that has been modified or damaged through misuse, accident, neglect, or subsequent manufacturing operations or assemblies by anyone other than 3M Touch Systems, Inc. **3M Touch Systems, Inc. shall not be liable in any action against it in any way related to the Products or software for any loss or damages, whether non-specified direct, indirect, special, incidental or consequential (including downtime, loss of profits or goodwill) regardless of the legal theory asserted.**

Copyright © 1997 — 2011 3M All rights reserved.

Document Title: *3M™ MicroTouch™ Software MT 7 User Guide*

Document Number: TSD-25695, Version M

3M, the 3M logo, MicroTouch, and the MicroTouch logo are either registered trademarks or trademarks of 3M in the United States and/or other countries.

Windows and/or other Microsoft products referenced herein are either registered trademarks or trademarks of Microsoft Corporation in the U.S. and/or other countries.

Linux® is a registered trademark of Linus Torvalds in the U.S. and/or other countries.

Java® is a registered trademark of Oracle® in the U.S. and/or other countries.

All other trademarks are the property of their respective owners.

Contents

About This Manual

| | |
|---|---|
| Introduction | 5 |
| Sensor Care and Cleaning | 5 |
| 3M Touch Systems Support Services | 6 |
| Contact 3M Touch Systems | 6 |

Chapter 1 Installing MT 7 Software

| | |
|-----------------------------------|----|
| MT 7 Software Overview | 7 |
| Installing MT 7 Software | 8 |
| Performing a Silent Install | 11 |
| Customizing Your Settings | 12 |
| Uninstalling MT 7 Software | 12 |

Chapter 2 MT 7 Software Control Panel

| | |
|--------------------------------------|----|
| Overview | 13 |
| Opening the MT 7 Control Panel | 13 |
| Main Tab | 14 |
| Touch Settings Tab | 18 |
| Edge Adjustment Tab | 20 |
| Edge Adjustment Setting | 21 |
| Tools Tab | 23 |
| Controller Tab | 26 |

Chapter 3 Windows® CE Overview

| | |
|--|----|
| Installation Instructions | 31 |
| Instructions for Platform Builder for Microsoft Windows® CE 6.0 R3 | 35 |
| Supporting Multiple Windows® CE Versions | 36 |
| Supporting Multiple Projects | 36 |
| Slow Draw Anomalies | 37 |

Chapter 4 Windows® XP Embedded Overview

| | |
|---|----|
| Installation Instructions | 39 |
| Loading MT 7 Into The Components Database Manager | 39 |
| MT 7 Component Selection In Target Designer | 39 |
| MT 7 Components | 40 |

| | | |
|-------------------|--|----|
| Chapter 5 | MT 7 for Linux® Overview | |
| | System Requirements | 41 |
| | Installation Instructions | 42 |
| | Error Messages During Installation | 45 |
| | Removing MT 7 For Linux | 47 |
| | Troubleshooting The Init Script..... | 47 |
| | Troubleshooting Touch Behavior | 48 |
| | Running Touch Applications | 48 |
| | Calibration Messages Are Unreadable..... | 49 |
| | Known Issues | 49 |
| Appendix A | Multiple Monitor Setup (Windows® Only) | |
| | Overview | 51 |
| | Changing the Controller ID..... | 51 |
| | Setting Up Multiple Monitors | 51 |
| Appendix B | Troubleshooting the Touch System | |
| | Overview | 55 |
| | Other Serial Devices Do Not Work | 55 |
| | Multiple Display Support..... | 56 |
| | Cursor Does Not Reach Edges of Display | 56 |
| | Cursor is Jittery | 56 |
| | Cursor Jumps or Bounces Suddenly Across the Display | 56 |
| | Double-Click Doesn't Work (not available on Windows® CE or Linux®) | 56 |
| | Drawing Lines Are Not Straight and Smooth | 57 |
| | Find Sensor (for Serial Plug & Play Controllers) | 57 |
| | Touch Is Not Working..... | 57 |
| | Touch Driver Did Not Load..... | 58 |
| | Right-click Tool Buttons Are Swapped | 58 |
| | A Previous Version of TouchWare Software Was Detected | 59 |

About This Manual

Introduction

This manual describes how to:

- Install 3M™ MicroTouch™ Software MT 7 for your touch system and specific operating system.
- Use the MT 7 control panel to customize your work environment.
- Troubleshoot the sensor.

Before installing MT 7 software, you must complete the appropriate hardware connections for your controller. For instructions, refer to your appropriate 3M™ MicroTouch™ Controller Reference Guide. All technical documentation can be found on the 3M Touch Systems, Inc. website at www.3m.com/touch.

The drivers included in MT 7 will support the following:

- All current 3M™ MicroTouch™ controllers (no legacy controllers) and chipset designs.
- Capacitive and resistive touch technologies
- Both USB and RS-232 communication protocols.

Sensor Care and Cleaning

The sensor requires very little maintenance. 3M Touch Systems, Inc. recommends that you periodically clean the glass surface.

| |
|--|
|  CAUTION |
|--|

| |
|--|
| <p>To reduce the risk of the potentially hazardous situations associated with the use of isopropyl alcohol which may result in minor or moderate injury or property damage:</p> |
|--|

| |
|--|
| <p>Follow all instructions and recommendations in the alcohol manufacturer's Material Safety Data Sheet and product label.</p> |
|--|

Typically, an isopropyl alcohol and water solution ratio of 50:50 is the best cleaning agent for your sensor. You can also use straight isopropyl alcohol. Be sure to follow solvent manufacturer's precautions and directions for use when using any solvents.

- It is important to avoid using any caustic chemicals on the sensor.
- Always dampen the cloth and then clean the sensor. Be sure to spray the cleaning liquid onto the cloth, not the sensor, so that drips do not seep inside the display or stain the bezel.
- Apply the cleaner with a soft, lint-free cloth. Avoid using gritty cloths.
- Always handle the sensor with care. Do not pull on or stress flex tail.

3M Touch Systems Support Services

3M Touch Systems, Inc. provides extensive support services through our website and technical support organization. Visit the 3M Touch Systems website at [m.com/http://www.3m.com/touch](http://www.3m.com/touch), where you can download touch system software and drivers, obtain regularly updated technical documentation on 3M Touch Systems products, and learn more about our company.

Whenever you contact Technical Support, please provide the following information:

- Touch display size, part number and serial number
- Current driver version
- Operating system used
- Information on additional peripherals

Technical Support is available Monday through Friday 8:30 a.m. to 5:30 p.m. with limited call back service after 5:30 p.m. until 8:00 p.m. US Eastern Standard Time – 9 a.m. to 5 p.m. throughout Europe.

You can contact 3M Touch Systems, Inc. Technical Support (US only -- Eastern Standard Time) by calling the hot line, sending email or a fax.

- Technical Support Hot Line: 978-659-9200
- Technical Support Fax: 978-659-9400
- Toll Free: 1-866-407-6666 (Option 3)
- Email: US-TS-techsupport@mmm.com

Contact 3M Touch Systems

Contact information for all offices can be found on our website at:

<http://www.3Mtouch.com/>

CHAPTER 1

Installing MT 7 Software

3M™ MicroTouch™ Software MT 7 allows users to select, launch, and drag objects using the sensor. MT 7 provides support for MicroTouch™ sensor operation for all applications running under the following operating systems:

- Microsoft® Windows® 7
- Microsoft® Windows® Vista
- Microsoft® Windows® XP
- Linux®

MT 7 Software Overview

Your product includes several software tools to help you work with and customize the touch sensor. Specifically, MT 7 Software includes the following programs and utilities:

- Touch drivers
- Control panel
- Software uninstall utility
- Calibration tool
- Multi Display tool – Windows® only

Touch Drivers

Touch drivers are the software the system uses to communicate with the touch controllers. MT 7 Software includes drivers for applications running in different operating environments. You can run programs and use touch (finger or stylus) input without any program modifications.

MT 7 Control Panel

You can use the MT 7 control panel to set your preferences for the sensor. For example, you can define the following preferences:

- Whether the touch action occurs when you touch the sensor or when you lift your finger (or stylus) off the sensor.
- Whether you hear a sound when you touch the sensor.
- Define a frame around the active touch area in which the cursor moves closer to the edges of the sensor.

You can also use the MT 7 control panel to calibrate the touch sensor and run optional programs.

Online Help

MT 7 Software enables you to launch a fully searchable PDF of this User Guide from the Control Panel.

MT 7 Windows® Software Uninstall Utility

The Uninstall utility automatically deletes all MT 7 software components from your computer and removes most MT 7 Software entries from the system files. For details on how to uninstall MT 7 for Windows® CE, Windows® XP Embedded, and Linux, refer to Chapters 3, 4, and 5.

Calibration Tool

This tool enables you to calibrate your touch sensor without launching the control panel.

- For Linux® use `/etc/twscreen/TwCalib`
- For all other operating systems use `twcalib.exe`

Multiple Display Manager

This tool enables you to set up an arrangement of multiple displays with sensors.

Microsoft WHQL Certification

Note that the MT 7 touch driver is WHQL certified. WHQL certification is designed to ensure that the new hardware device complies with operating system requirements. Without the WHQL certificate, the user is notified of 'potential compatibility issues' when installing the device.

Installing MT 7 Software

Note: For specific installation instructions for Windows® CE, Windows® XP Embedded, and Linux®, refer to Chapters 3, 4, and 5.

When you install MT 7 software, you have several installation options:

- Typical Install (basic features needed to support touch)
- Full Install (installs all components)
- Custom Install (select which components you wish to install)
- Upgrade (if you have MT 7 software already, will update the components you have installed)

To install MT 7 software:

1. Make sure you have completed the appropriate hardware connections. Serial controllers should be connected before you begin. USB controllers can be plugged in either before or after. The controller can then be automatically detected and there will be no need to reboot.
2. Power on your system. Make sure no other applications are open.
3. Download the MT 7 Software program from the www.3m.com/touch website. Unzip the file into a directory of your choice. Using Windows® Explorer, browse to that MT 7 folder and double-click the Setup.exe file.
4. Follow the onscreen instructions to begin the installation.
5. When prompted to choose the installation type, select whether to perform a Typical Install, Full Install, or Custom Install (or, if available, Upgrade).

During installation, you may get messages about finding new hardware. This is the MT7 driver searching your serial ports for touch controllers.

The Typical option automatically installs the minimum required MT 7 software files, creates a MT 7 program group and control panel.

If you choose Custom or Upgrade, you can select which components to install. The following components are available: Controller Support, User Interface and Utilities and Tools.

Driver Selection



3M Touch Systems offers drivers that leverage Microsoft Windows' native support for touch devices and mice. Because of this, a dialog appears during installation asking you to select a driver.

- If this is a new installation, the default option reflects the driver that best suits your system.
- If this is not a new installation, the chosen option reflects the driver you currently use.

Note that some systems may not show a touch digitizer driver option. This option appears only if your system supports Windows' Tablet PC. Tablet PC is supported on Windows® 7, Vista, and some XP operating systems.

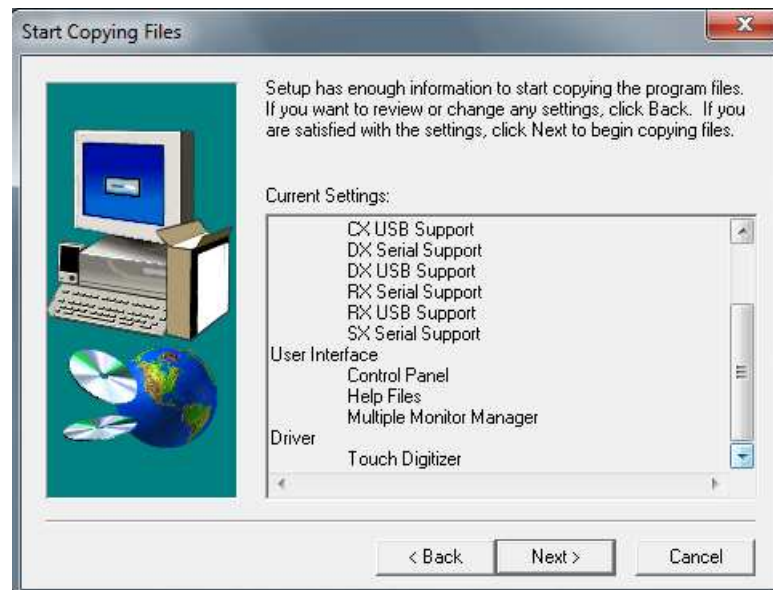
Also, note that each driver presents different functions. Choose a driver based on what will suit your needs best.

Touch Digitizer- Has tablet features when used in conjunction with Windows 7. This includes flicking, an onscreen keyboard, and a press, hold, liftoff action for the right-click function.

HID Mouse- Has right-click desktop button.

Legacy Mouse- Enables multi-display mapping and has right-click desktop button.

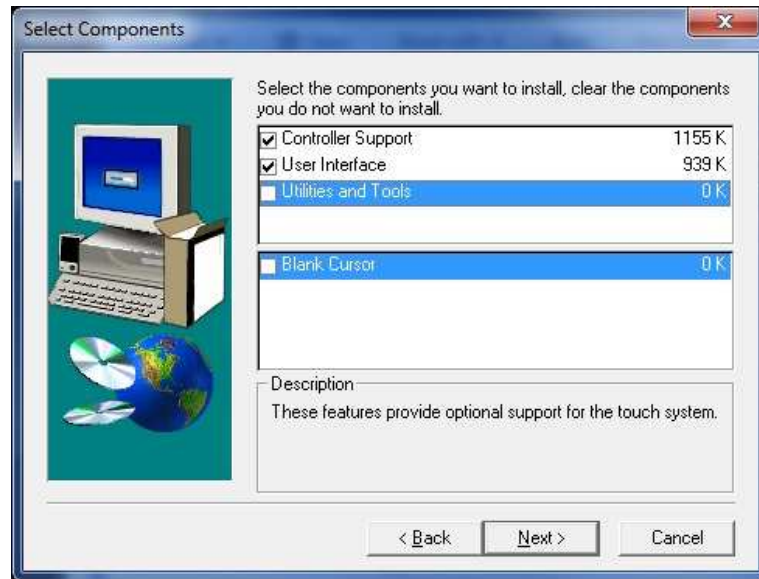
User Interface



The User Interface provides the following components:

- The Control Panel is used to configure the sensor
- The Help button launches a searchable PDF of this guide. (Linux® and CE both need their respective versions of PDF reader and Java.)
- The Calibration Tool is recommended if you are not loading the Control Panel.
- The Multiple Display Manager enables you to set up multiple displays with sensors. You must load this file in order to configure multiple displays.

Utilities and Tools



The Blank Cursor option enables you to hide the cursor. By selecting this, MT 7 Software installs a blank cursor on your system. To always hide the cursor, open the Windows® Control Panel, select mouse settings and then browse to the MicroTouch folder and select blank cursor.

Performing a Silent Install

If you have to perform multiple system installations, you may want to take advantage of the MT 7 software silent install.

To begin, you must create a silent install script that contains the recorded installation instructions. You create this script by running the Setup program in record mode. During a silent install, the Setup program receives input from the recorded install script rather than from a user. Once you record an installation script, you can run it on as many similar systems as you like.

The first step in producing a silent installation is to record your standard installation. Open a command line window and set your working directory to the directory containing the MT 7 for Windows® setup program. Issue the command "setup -r" and run the installation normally.

When the installation finishes, it creates a recording file, setup.iss, in your Windows® system directory (such as C:\Windows). Copy this file to the directory containing the MT 7 for Windows® setup program.

To run the silent installation, simply issue the command "setup -s". This replays the installation you recorded above.

Note that the silent installation fails if the installer reacts differently than when it was recorded. For example, if you record an installation using the "Upgrade" option and replay it on a system without MT 7 for Windows, the installation may fail. You should test the silent installation on all expected configurations.

Since the recording process creates a file, the MT 7 program must be on a hard drive and not on a CD-ROM. Once the file is created, you can make a CD-ROM, or equivalent media, with the distribution files and the setup.iss file. Your use of this CD-ROM is subject to the license agreement of this software. This feature does not give you the right to distribute this software if that right is not already granted to you by the license agreement.

Customizing Your Settings

Once you have installed MT 7 software, you can optimize the performance of the sensor using the MT 7 Control Panel. You can adjust settings for touch sounds, double-click speed, and double-click area (not applicable to WIN CE or Linux® systems).

Note: You can define touch settings using the MT 7 Control Panel. MT 7 stores the touch settings in the Windows® system registry. Whenever you save changes to the MT7 Control Panel, MT 7 software records the new settings in the system registry. These changes take effect immediately.

Uninstalling MT 7 Software

The Uninstall program removes all MT 7 software components from your computer. These components include MT 7 software files, directories, folders, and registry key items. The Uninstall program also removes all MT 7 software entries from the system registry files.

Note: For details on how to uninstall MT 7 for Windows® CE, Windows® XP Embedded, and Linux, refer to Chapters 3, 4, and 5.

To uninstall MT 7 software:

1. Close MT 7 software if it is open.
2. Click on Start → Programs → MicroTouch MT 7 → Uninstall MT 7 Software
The path may be different if you performed a custom installation and chose a custom name for the MT 7 software program group.
3. Follow the onscreen instructions to remove MT 7 software. 3M Touch Systems strongly suggests you reboot your system when complete.

CHAPTER 2

MT 7 Software Control Panel

Overview

The MT 7 software control panel consists of tabs that allow you to determine the best settings for your touch system configuration.

- Use the Main tab to run a 3-point calibration routine for optimum accuracy of your sensor.
- Use the Touch Settings tab to define the touch actions that equate to mouse actions and add right-click functionality to the touch sensor.
- Use the Edge Adjustment tab to define a frame around the active touch area in which the cursor moves closer to the edges of the sensor.
- Use the Tools tab to restore hardware or software defaults, reset controller, run Draw Test from the desktop, and to enable Advanced Options for your touch sensor.
- Use the Controller tab to activate linearization, select frequency, set controller ID, and determine pen/finger modes. Note that this tab appears only if you have selected the appropriate options from the Advanced Options from the Tools tab and have the specific type of controller attached to your system.

Opening the MT 7 Control Panel

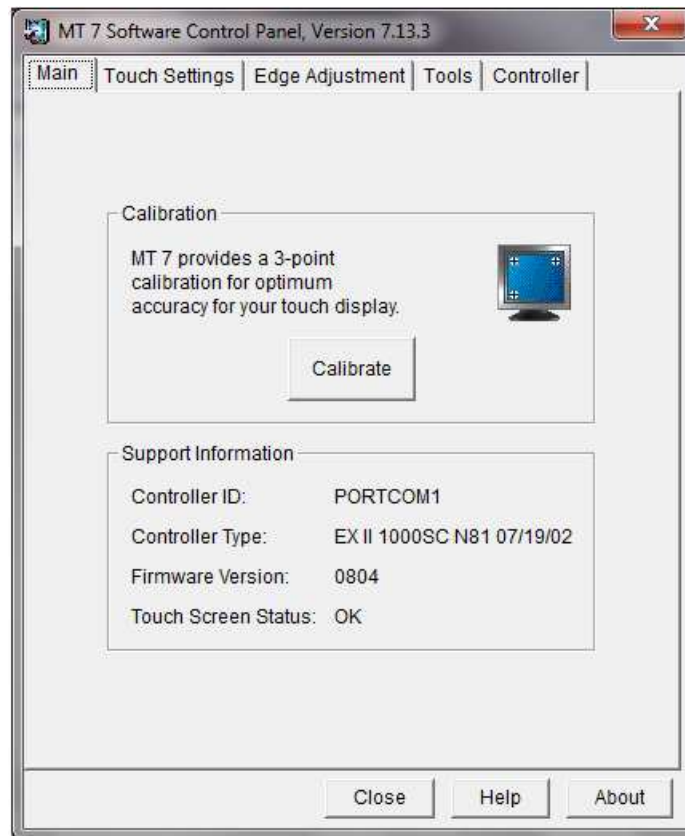
You can open the MT 7 control panel by clicking:

Start → Programs → MicroTouch MT 7 → Control Panel.

Note: In Linux, use `startCP` to launch the control panel

Main Tab

This tab covers sensor calibration as well as basic support information.



Calibration

The calibration process aligns the sensor with the underlying video. Specifically, calibration defines the dimensions of the active area of the sensor and locates the center of the sensor. If the sensor is not calibrated, the active area of the sensor may not be aligned properly or may be unnecessarily small.

You should calibrate the sensor in the following cases:

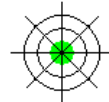
- Any time you change the size and position of the video image by adjusting the horizontal and vertical controls on your display.
- Any time the cursor does not follow the movement of your finger, or does not reach the edges of the sensor. If you continue to need additional accuracy along the edges, use the Edge Adjustment tab.

Calibrating the Sensor

1. Select the Main tab.
2. Click the Calibrate button.

Note: If you are using a stylus (pen) and you are in Pen/Finger mode, a dialog will ask whether you wish to calibrate using Pen or Finger. Calibrate using each option separately and when you are done, MT 7 will restore your touch mode to Pen/Finger.

3. A calibration target appears in the lower left corner of the sensor.



Note: If you press Escape or do not touch the sensor within twenty seconds, the system automatically cancels the calibration process with no change to the current settings.

4. Touch the sensor positioning your fingertip to completely cover the green target. This position is calculated upon liftoff and when you remove your finger, the target should turn red.

When touching the calibration target, make sure to:

- Face the display directly.
 - Perform the calibration in the position (sitting or standing) you expect to normally use the sensor.
 - Touch the calibration target firmly and precisely with your fingertip. During Calibration, be careful to keep your fingernails and other fingers away from the sensor as you touch the target.
5. Repeat these instructions for additional calibration targets.
 6. Once you have calibrated the sensor, a dialog box will appear to ask if you wish to test, accept or cancel this calibration.
 - If you select Accept, then the new calibration settings are automatically accepted.
 - If you select Test, then a Draw (refer to the Tools tab for more details) screen appears. When you exit Draw mode, a dialog will prompt, “Are you satisfied with the results?”
 - Selecting Yes will keep the new calibration settings.
 - Selecting No will restore the original (pre-calibration) settings.
 - If you select Cancel, the original settings will be restored without change

Testing the Calibration

If you accidentally liftoff from the sensor in the wrong place during calibration, you will distort the sensor calibration. Test by touching several points on the sensor to make sure you are satisfied with the calibration results. The cursor should be located underneath your finger or pen when you touch the sensor. Repeat the Calibration process until you are satisfied. Recalibrate the sensor if any of the following tests fail. Touch random points on the sensor. The cursor should be located underneath your finger or pen when you touch the sensor.

- Drag your finger across the sensor and check that the cursor follows your movements.
- Touch each corner and along the edges of the sensor. Verify that the cursor reaches the full image area of the sensor. Be sure you can touch and activate all icons and menus across the entire sensor.
- If you are using a pen stylus, be sure to perform the calibration procedure using the pen.
- If you need to recalibrate the sensor, make sure to touch the targets carefully. It is possible that one of your touches did not register properly or you accidentally touched the sensor in the wrong place during calibration. For example, if you touch beyond the targets or into the non-image area, you will distort the sensor calibration.

Support Information

This information helps identify your system setup for troubleshooting purposes. If for any reason you need to call Technical Support, this information will be useful.

Controller ID

On the Main tab, this is an information-only field in a single controller situation – if you have more than one controller you can select the specific controller you want to adjust.

This field identifies the controller(s) attached to your system. It will display unique identifiers for each controller attached to your system in a drop box. When you select a controller from this list, the Controller tab will reflect only this controller – any changes will be made only to this controller.

- USB controller values include USB00000001, USB00000002, or USB00000003.
- For EX serial controllers values include PORTCOM1, PORTCOM2, PORTCOM3, etc.
- For other serial controllers values include SER00000001, SER00000002, etc.

Note: If there are multiple controllers in use, then a dropdown menu will appear next to 'Controller ID.' Each controller may be calibrated separately by choosing a specific one from the dropdown menu and then hitting 'Calibrate.'

Controller Type

This field displays the type of controller currently attached to your system. This data may be useful for Technical Support issues. The touch controllers supported with this release are as follows:

- EX USB, HID, and Serial capacitive and resistive controllers
- DX Dual mode (USB and Serial) controllers
- PX Dual mode (USB and Serial) controllers
- RX USB and Serial resistive controllers
- SX Serial pen controllers

Firmware Version

These digits represent the version number and revision level of the touch controller firmware.

Sensor Status

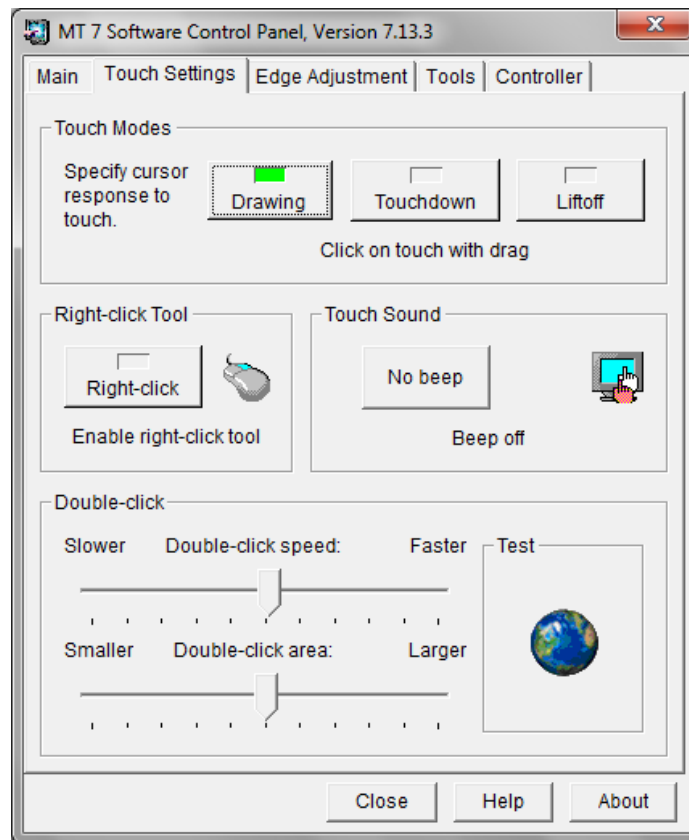
Sensor Status refers to whether or not the sensor has been found and is operational.

Some of the possible messages include:

- OK – Sensor found and operational.
- BLK Error – Hardware error such as a checksum error in controller EEPROM.
- CBL Error – Cable NOVRAM missing – this is only an error in systems requiring cable NOVRAM.
- HDW Error – Hardware error.
- LIN Error – Linearity data error.
- NOV Error – Checksum error in NOVRAM, using defaults.
- PWM Error – Hardware error.
- ROM Error – Checksum error in ROM.
- SET Error – Unable to establish operating range at power-up.

Any other condition indicates a hardware failure. Contact Technical Support for more information.

Touch Settings Tab



The Touch Settings tab enables you to customize the response of your sensor. You can change the way the system responds to your touch, add a right-click tool to your desktop, tell your system to beep on touch, and define the double-click speed and area of your touch.

Touch Modes

The available Touch Mode options are Drawing, Touchdown, and Liftoff.

Drawing Mode (Default Value)

Drawing Mode is most useful for draw, paint, illustration, and graphics applications. In Drawing Mode, a touch is equivalent to pressing and holding down the mouse button. This is considered the easiest mode to use with an immediate reaction to touch. Lifting off is equivalent to releasing the mouse button.

- To click, touch the object. Lift off the sensor.
- To double-click; touch the object twice quickly at the same location.
- To drag, touch the object. Slide your finger to the new location. Lift off the sensor.

Touchdown Mode

Touchdown Mode enables you to create an immediate button action as soon as you touch the sensor. In Touchdown Mode, you cause a button down at the cursor location, with a short pause and then a button up. You can leave your finger on the sensor but only a single touch is registered until you lift your finger off the sensor and touch down again.

Touching the sensor is equivalent to pressing and releasing the mouse button. The action occurs as soon as you touch the sensor. This mode is best for button-based applications (like a calculator). Drawing or dragging is not supported in this mode.

Liftoff Mode

Liftoff Mode enables you to position the cursor where you want before creating a button action. In Liftoff Mode, the cursor will follow your finger for a more accurate touch. When you want to select an item, lifting your finger off the sensor will cause a button down, short pause, and then a button up to occur.

Touching the sensor is equivalent to moving the mouse position. The button down/button up action occurs when you remove your finger from the sensor. This mode is useful for applications requiring greater accuracy because it lets you carefully position the cursor before acting on it. Drawing or dragging is not supported in this mode.

Right-Click Tool (not available on Linux®)

This option places an icon on the desktop (always on top of your application) that allows you to select which mouse button to activate on touch. This icon can be dragged anywhere on the screen. In the image you will see that either the right-click or left-click mouse button is green. This is the active button. Note that this works for the next click action only. After you have selected the right-click option and then touched the screen causing the right-click menu to appear, the mouse will automatically revert back to its original left-click state. You can position this icon anywhere on your desktop by selecting it, pausing until the four-pointed arrow appears, and dragging it wherever you want.

Left button is typically used for normal select and normal drag. Right button is typically used for applet properties such as context menu and special drag.

For Windows® 7 (when used with the touch digitizer option) press and hold your finger down on the screen. A ring will appear around the point at which you are touching and upon liftoff the right-click menu will appear.

Touch Sound

Select audible beep on touchdown, liftoff, or no beep at all. Click on the Beep button to select the appropriate option for your application. The default setting is no beep on touch (Beep off).

Double-Click Speed (not available on Windows® CE or Linux®)

Double-click speed defines how quickly you must touch the sensor for the system to interpret your actions as a double-click. Set the double-click speed in the slow to medium range for optimum performance with a touch sensor.

Touch the globe twice to test the double-click speed and area settings. If the globe begins to spin, the sensor recognized your touch as a double-click.

Note: Changing this setting will affect the double-click setting of the mouse.

Double-Click Area (not available on Windows® CE or Linux®)

Double-click area defines the *space* in which you must touch the sensor for the system to interpret your actions as a double-click. Set the double-click area in the medium to high range for optimum performance with a sensor.

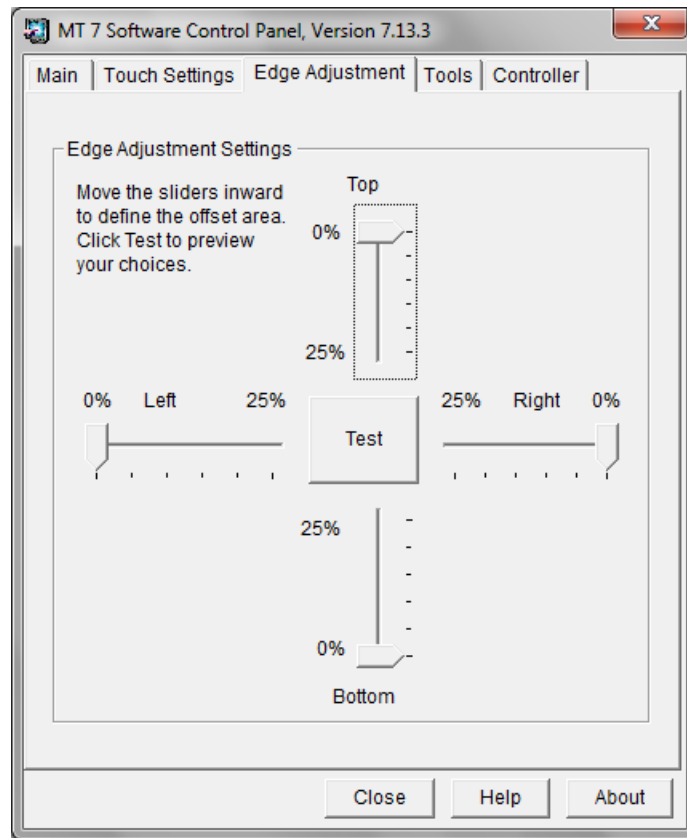
Touch the globe twice to test the double-click speed and area settings. If the globe begins to spin, the sensor recognized your touch as a double-click.

Note: Changing this setting will affect the double-click setting of the mouse.

Edge Adjustment Tab

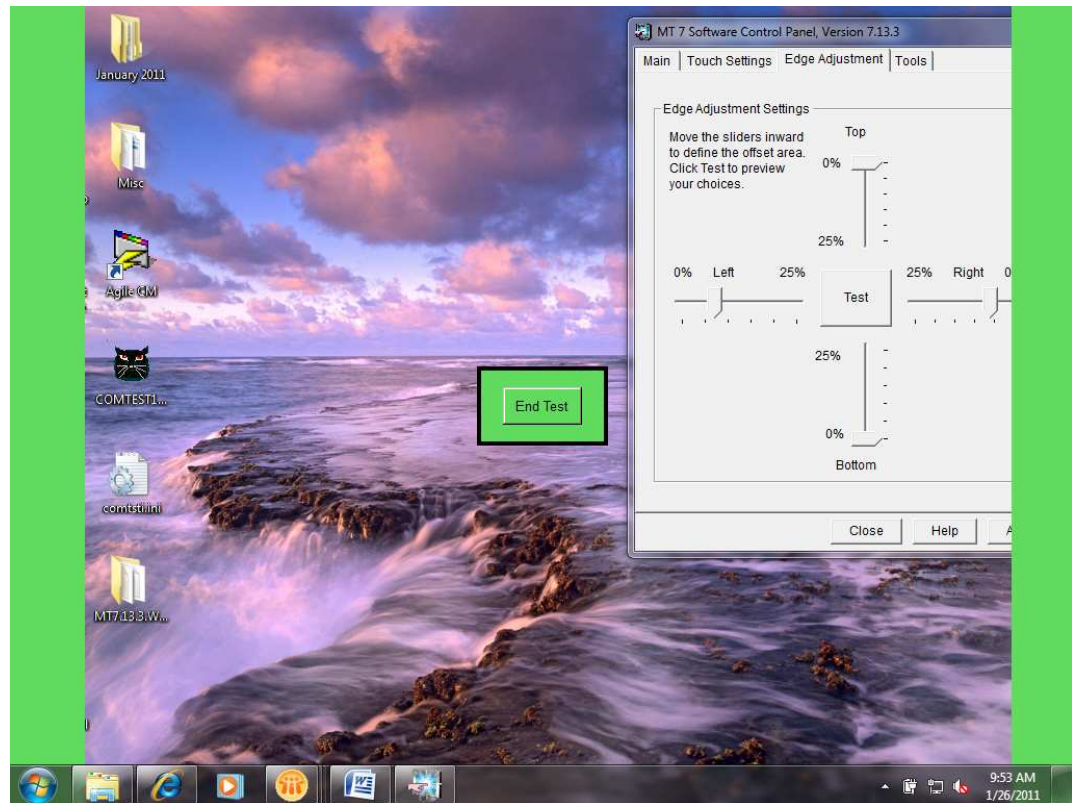
Once you calibrate the sensor, the cursor should be located directly beneath your finger when you touch the sensor. However, this may make it difficult to touch items at the very edges of the sensor. The Edge Adjustment tab enables you to define an offset area in which the cursor moves closer to the edges of the sensor so you can easily and more precisely select small items, such as single words, the Windows® Start button, check boxes, or radio buttons.

For example, if you have a row of buttons along the left edge of your sensor, you may want to set an edge adjustment to enable users to easily activate these buttons. Because each edge is independent of the other, you only need to adjust the left margin to accommodate this row of buttons.



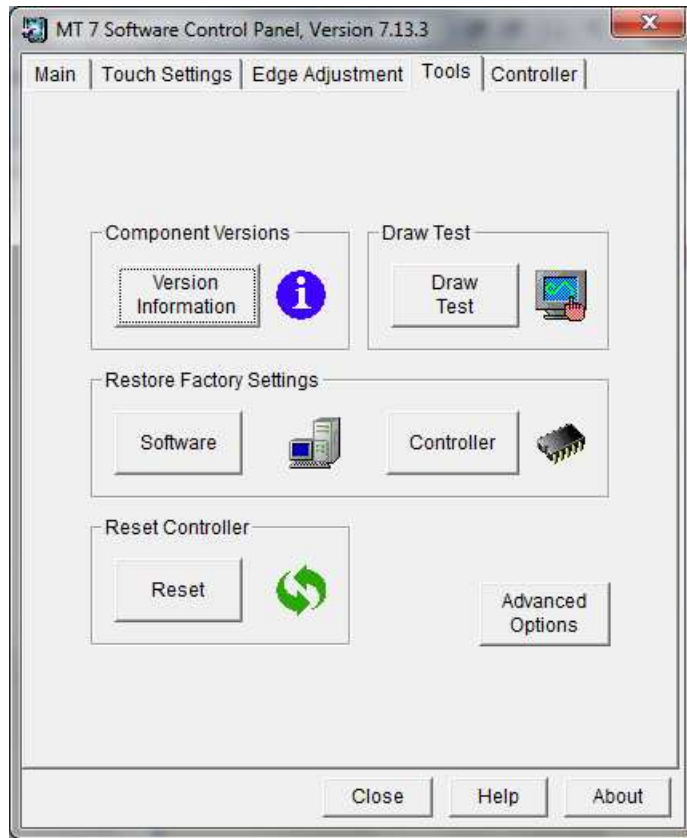
Edge Adjustment Setting

To set the Edge Adjustment, move the sliders inward to define the offset area. These changes take effect immediately. Click Test to preview your choices. The area you have defined appears as a colored area as shown below. Within this colored area, the cursor will automatically move ahead of your finger so you can more easily touch items closer to the edge.



Determine if the area you have defined is sufficient for your needs. Can you touch into the corners and along the edges of the sensor? Click Escape, End Test, or Return to go back to the Edge Adjustment tab. If you are satisfied with the selections you have made – you are done. If not, adjust the sliders to better accommodate your needs.

Tools Tab



The Tools tab enables you to perform a variety of diagnostics to optimize the performance of your sensor. This tab is also the gateway to advanced touch options.

Component Versions

This is an informational screen for diagnostic purposes that details the building blocks of MT 7 and its version numbers.

| File | Version | Copyright |
|--------------------|----------|--|
| TwAppIO.dll | 7.13.0.0 | Copyright 1991-2009 3M. All rights reserved. |
| TwCalibLib.dll | 7.13.0.2 | Copyright 1991-2010 3M. All rights reserved. |
| TwCfgUtil.exe | 7.13.0.1 | Copyright 2004-2009 3M. All rights reserved. |
| TwCommon.dll | 7.13.0.3 | Copyright 2004-2010 3M. All rights reserved. |
| TwConfig.dll | 7.13.1.0 | Copyright 2003-2010 3M. All rights reserved. |
| TwGraphics.dll | 7.13.0.0 | Copyright 2004-2009 3M. All rights reserved. |
| TwIO_Cobra.dll | 7.13.0.1 | Copyright 2003-2009 3M. All rights reserved. |
| TwIO_Core.dll | 7.13.0.1 | Copyright 1991-2009 3M. All rights reserved. |
| TwIO_EX_HID.dll | 7.13.0.1 | Copyright 2008-2009 3M. All rights reserved. |
| TwIO_HID.dll | 7.13.0.1 | Copyright 2004-2009 3M. All rights reserved. |
| TwIO_Serial_DX.dll | 7.13.0.1 | Copyright 2004-2009 3M. All rights reserved. |
| TwIO_Serial_EX.dll | 7.13.0.1 | Copyright 2009 3M. All rights reserved. |
| TwIO_Serial_EX.dll | 7.13.0.1 | Copyright 2009 3M. All rights reserved. |

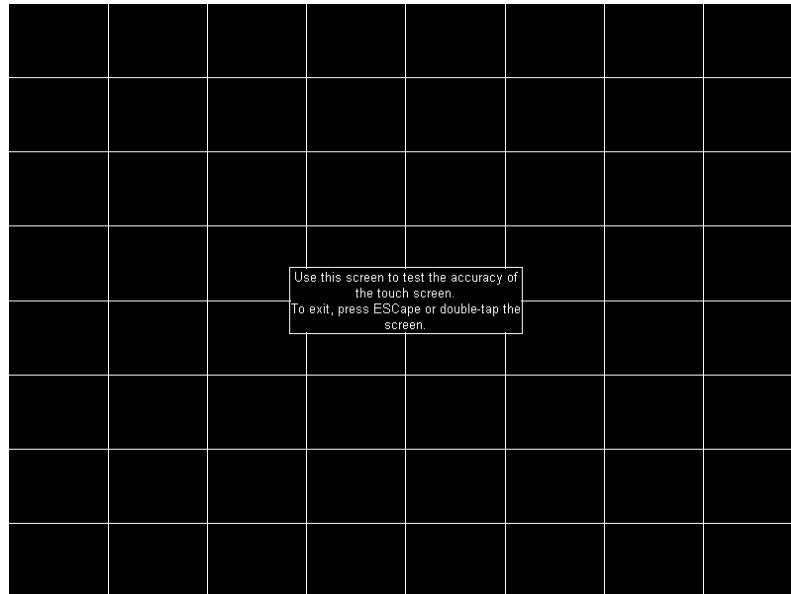
Draw Test

Note: You must be in Draw mode for this to work properly.

The Draw program lets you test the operation of the sensor and pen by checking the accuracy and speed with which the system responds to your touch. To draw, simply touch the sensor and drag your finger or pen.

The following options will help you use the draw program more effectively:

- Press B (blank) to clear the screen and display a blank drawing canvas.
- Press G (grid) to clear the screen and display a grid that you can use as a drawing guide (default setting).
- Press L (line) to draw solid lines on the screen (default setting).
- Press D (dots) to draw dotted lines on the screen, where each dot represents a point reported by the sensor.
- Press the Space Bar to clear the display.



Restore Factory Settings

Software

The Reset Software option is useful if you have reconfigured the MT 7 software and need to get back to a working state. This option will restore supplier factory configuration settings. If none exist, it will reset to 3M Touch System defaults.

Controller

The Restore Controller option is useful if you have reconfigured the controller and need to get back to a working state. Pressing this button restores 3M Touch System factory-set system defaults.

If after restoring controller factory defaults, you lose touch, you will need to reboot in order to restore touch.

Note: You must perform a calibration after restoring controller defaults.

Reset Controller

Use this only at the direction of Technical Support. This command initializes the hardware and the firmware, causes the controller to stop sending data, and recalculates the environmental conditions (for example, stray and offset values). The Reset command also cancels existing commands and returns the controller to normal operation.

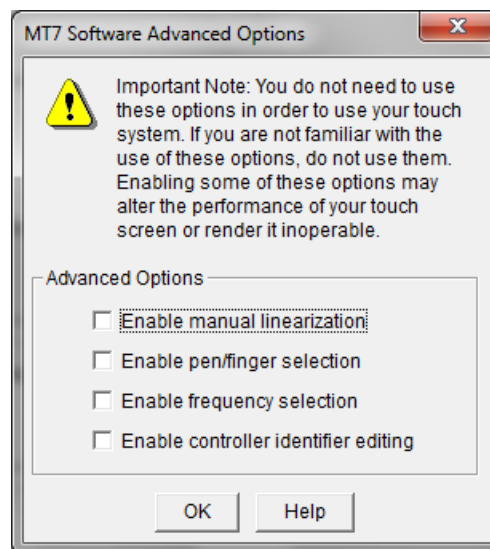
Advanced Touch Options

Important Note: Executing the Advanced Options may alter the performance of your sensor or render it inoperable. You should be aware of expected results before executing any option. If you are not familiar with the outcome of these settings, you should **not** be using these options.

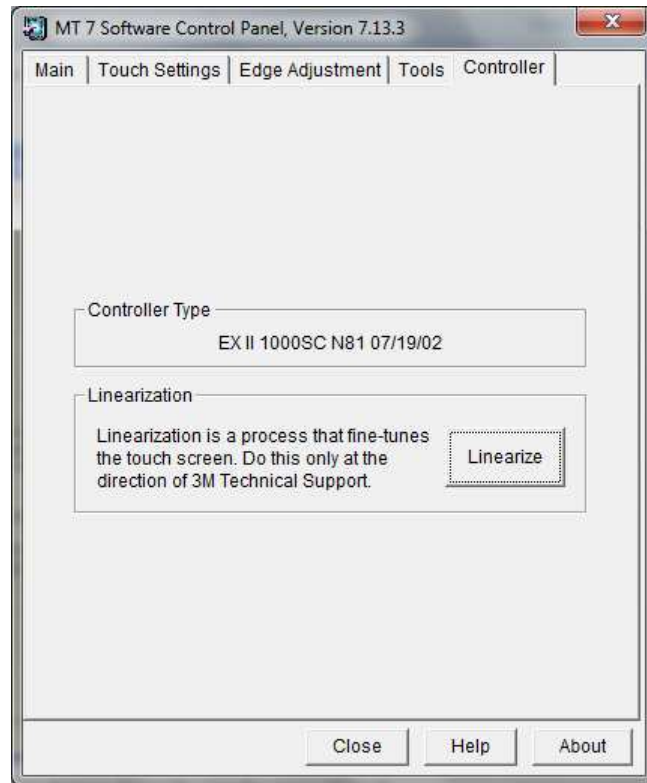
This option controls certain advanced functions for your controller. Depending on the options you have selected and the availability of that function for your given controller, you can choose certain Advanced Options from this screen.

- Enable manual linearization (only for EX and some RX series controllers)
- Enable pen/finger selection (only for SX controllers)
- Enable frequency selection (only for EX capacitive controllers)
- Enable controller identifier editing (helpful in multiple display setups)

Refer to the Controller Tab for a discussion of the various options associated with these Advanced Options settings.



Controller Tab



The Controller tab contains different choices depending on the type of touch controller(s) you have attached to your system and which options you selected from the Advanced Options from the Tools tab.

Controller Type

If you have more than one controller attached to your system, this field displays the controller currently selected on the Main tab. This data may be useful for Technical Support issues. The touch controllers supported with this release are as follows:

- EX USB, HID, and Serial capacitive and resistive controllers
- DX Dual mode (USB and Serial) controllers
- PX Dual mode (USB and Serial) controllers
- RX USB and Serial resistive controllers
- SX Serial pen controllers

Depending on the options you have selected and the availability of that function for your given controller, the following items may appear:

- Linearization
- Sensor Frequency
- Pen/Finger Selection
- Controller ID

Linearization

With certain controllers, you can perform a linearization to fine-tune your touch sensor. It should be performed only at the direction of 3M Touch Systems, Inc. Technical Support. Linearization consists of touching 25 targets on the display followed by 16 additional points to determine specific point accuracy over the face of the display.

The EX, and some RX series touch controllers support Linearization:

Linearization Process

To perform a 25-point linearization of the sensor:

1. Make sure the video image is centered in the display area using the horizontal and vertical controls.
2. Open the touch control panel and select the Controller tab.
3. Click Linearize. This will bring up, one at a time, 25 linearization targets on the display.

Note: If you press Escape or do not touch the sensor within 20 seconds, the system automatically cancels the linearization process with no change to the current settings.

4. Touch the sensor and position your fingertip to completely cover the green target. When touching the target, make sure you:
 - a. Face the display directly.
 - b. Perform the linearization in the position (sitting or standing) you expect to use the sensor.
 - c. Touch the target firmly and precisely with your fingertip. Be careful to keep your other fingers away from the sensor as you touch the target. Hold a steady touch over the target until you hear a beep or until the target turns red.
5. Repeat these instructions until all 25 targets have been touched.

A dialog will appear asking if you wish to “Test, Accept, or Cancel”.

- If you select Accept, then the new calibration settings are automatically accepted.
- If you select Cancel, the original settings will be restored without change.
- If you select Test, the 25 targets will now be replaced with a set of 16 targets used to verify the linearization performed in steps 1 through 5.

These targets are yellow to begin with. If you successfully touch the target, it turns green. If you are off, it turns red and returns a percentage error number. If the linearization is not within acceptable tolerances, you should perform the linearization process again.

Repeat the previous process for each of these targets. This process automatically returns to the control panel once complete. If you are using a pen stylus, repeat the linearization procedure with the pen.

To test the accuracy of the linearization process, use the Draw Test program (found on the Tools Tab) to draw some lines on the screen. Check that they are smooth, straight, and thin. You do not want lines to look key stoned or curved.

To exit this program at any time during the process, press Escape.

Pen Overview (Pen Controller Only)

From the Tools tab, click on Advanced Options and select Enable Pen/Finger Selection.

These options are available only if your system has a pen controller. Pen Mode defines whether the touch sensor recognizes input from both a pen and a finger, from a pen only, or from a finger only. The default mode is Pen/Finger, which means that you can use either your finger or your pen to select options.

Certain pens come with a button that can be used for right-clicks. To right-click, press and hold the button while you touch the sensor. After touching the sensor, quickly lift the pen and release the button.

Note the Pen mode is immediately active. For example, if you select Pen Only, the system recognizes only the pen as a touch device. You cannot use your finger to make a selection. You can still use the mouse to select an option.

The system saves the Pen mode so that the next time you power up the system, the selected pen mode is active.

Pen and Finger Calibration

On a pen system, you must calibrate the sensor twice, (once with your finger and once with the pen) if you are using Pen/Finger mode.

Pen Modes

Note: Changing the Pen mode setting can optimize the performance of the sensor. In Pen/Finger mode, the pen controller checks for input from either a pen or a finger. The pen controller always gives priority to the pen. If you are not currently using the pen for your touch application, use Finger Only mode for optimum system performance. If you are not currently using your finger for your touch application, use Pen Only mode for optimum system performance.

Pen only mode—The system recognizes only pen touches on the sensor. The system ignores finger touches on the sensor.

Finger only mode—The system recognizes only finger touches on the sensor. The system ignores pen touches on the sensor.

Pen and finger mode—The system recognizes both pen and finger touches on the sensor. This mode is the default mode for Pen controllers. If the system detects both pen and finger touches at the same time, it gives the pen higher priority and acknowledges only the pen touches. This priority prevents accidental touches from your finger or hand being interpreted as input.

If you are using the pen and you lift the pen from the sensor, the system does not recognize finger touches until after a system-defined time delay. If your finger is on the sensor when the pen lifts off, the system ignores the finger until you lift off and touch the sensor again. For example, if you rest your hand on the sensor while you write with the pen, you can lift the pen and put it back again without your hand touch being acknowledged.

Sensor Frequency

Note: This option applies to capacitive EX series controllers.

From the Tools tab, you can choose the Advanced Options button. From the Advanced Options dialog, select Enable Frequency Selection to activate this option on the Controller tab if you are using a capacitive EX-based controller.

This option adjusts the operating frequency of the touch controller. In general, you will not need to adjust the Sensor Frequency. However, if you are experiencing problems with a jittery cursor, ragged lines, or random touch points, you may want to run the Enable Frequency Selection option.

Use the Enable Frequency Selection option to test the available frequency settings and determine the best frequency. The range of frequency settings and the default setting depends on your touch controller. You can set a new operating frequency, and then check the performance of the touch sensor at that frequency setting.

Be aware that if you choose Restore Factory Settings → Controller from the Tools tab, you will change the Sensor Frequency to the factory default setting. You may need to redo the Sensor Frequency at this time.

Sensor Frequency Procedure

From the Tools tab, you can choose the Advanced Options button. From the Advanced Options dialog, select Enable Frequency Selection to activate this option on the controller tab if you are using a capacitive EX based controller.

In the Sensor Frequency box, you will see a pull down list of several frequency options. In general, the highest possible frequency will provide the best results. Once you change the frequency, do *not* touch the sensor for approximately 30 seconds. Touch will return when the frequency has been changed. Test to see if you are satisfied.

On a pen controller system, you have the option to change the frequency for both your finger and the pen if you are using Pen/Finger mode.

Testing the Newly Selected Frequency

Any time you adjust the Sensor Frequency you should test how the sensor is working and verify you are satisfied with the operation of the touch sensor.

Test the sensor by touching in several places and sliding your finger around the sensor. The cursor should hold steady and smooth. If you see erratic or jittery cursor movement, readjust the Sensor Frequency.

Adjust the frequency until your touch test produces acceptable results. A good test is to go to the Draw program and hold your finger steady on the sensor. If the resulting pattern is a crisp and clear single dot, you should have a good frequency.

It is recommended that you recalibrate the touch sensor after you run the Sensor Frequency option.

Controller ID

Note: Changing this field will affect your multiple display setup.

From the Tools tab, you can choose the Advanced Options button. From the Advanced Options dialog, select Enable Controller Identifier Selection to activate this option on the controller tab.

If you do not have a multiple display setup, you do not need to use this field. Please refer to the Multiple Display section for more information.

CHAPTER 3

Windows® CE Overview

MT 7 Software, a member of the MicroTouch™ Software Suite, provides unified driver support for MicroTouch touch technologies over a wide range of operating systems. This version supports Microsoft® Windows® CE 6.0 R3

Intended for touch system integrators, MT 7 provides flexibility in defining how the sensor affects the system. This product includes a Touch driver, a Control Panel, and a Calibration Tool.

Installation Instructions

The Installer requires that Platform Builder be installed in your Windows® CE 6.0 R3 machine. The Installer puts the driver and control panel selected by user into the proper Platform Builder directories.

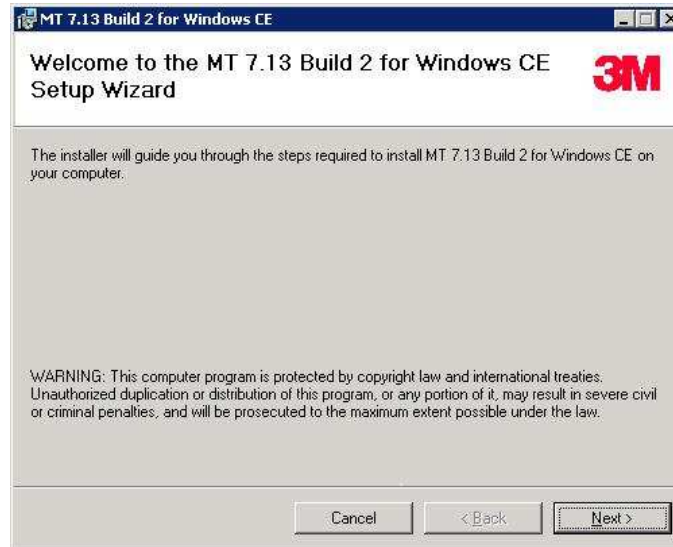
If you downloaded the distribution, unzip the file into another directory.

- Go to www.3m.com/touch and click Touch Software located on the left-hand side of the page.
- On the Touch Screen Software page there are several tabs, click MT7 Drivers.
- Choose CE from the dropdown menu under the heading Touch Drivers, choose CE.
- This will bring you to a new page with a link saying Microtouch MT7.13, click it.
- This will launch a series of windows. Save and unzip your files.
- Clicking MT7forWINCE.msi will begin the installation process.

When running the Setup you will see a series of screens all with instructions on how to proceed forward with the installation.

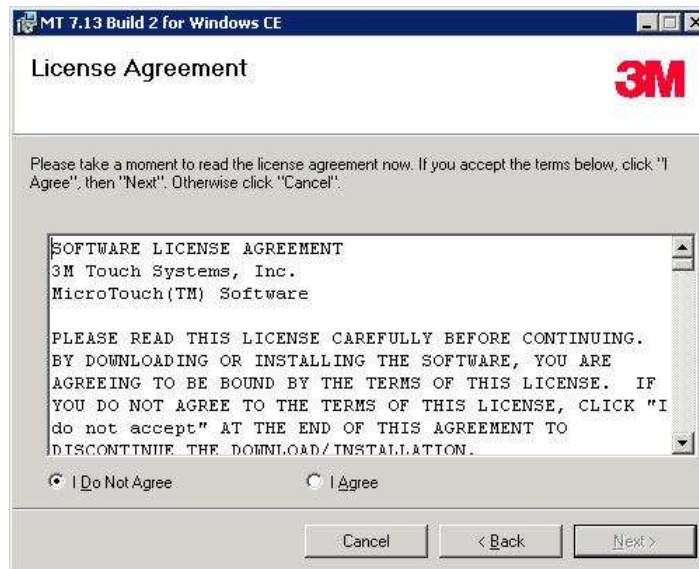
Note: Hitting Cancel at any point will terminate the Setup and close the window.

Welcome



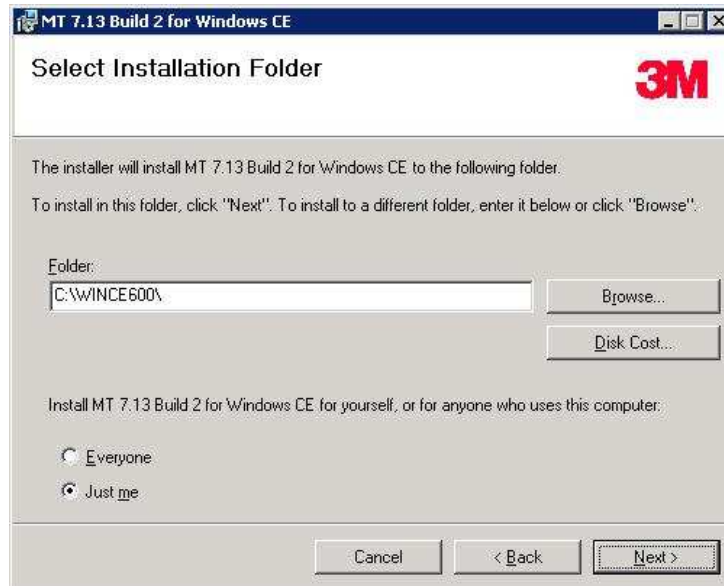
The first screen you will see is one welcoming you to the Setup wizard. To continue click Next.

License Agreement



The next screen you will be shown is the License agreement. Read through this agreement and either click 'I Do Not Agree' or 'I Agree.' By clicking 'I Do Not Agree' you will terminate the Setup and close the window. Clicking 'I Agree' will activate the Next button which will allow you to continue with the Setup.

Select Installation Folder



In the Select Installation Folder screen you are first given the option to choose your installation folder. The default option is the C:\WINCE600. This represents the default Platform Builder Root Directory. If you have your platform builder directory in a different folder, select Browse and choose an alternate location.

Also on this screen is the Disk Cost button. The Disk Cost button will tell you the amount of space the program will take up.

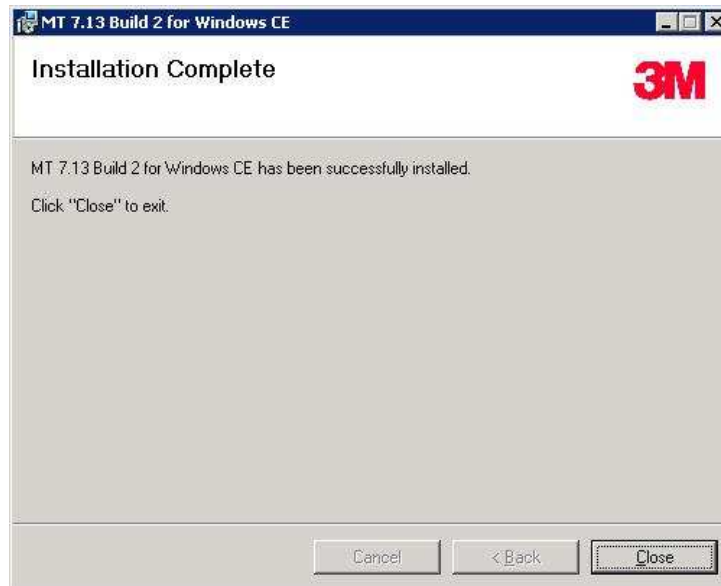
In addition, you are given an option to install MT 7.13 for Windows CE on your own account or universally for all users on your computer. When you are satisfied with all selections, continue by hitting Next.

Confirm Installation



The Confirm Installation screen notifies you that the setup is ready to install. To continue and install click Next.

Installation Complete



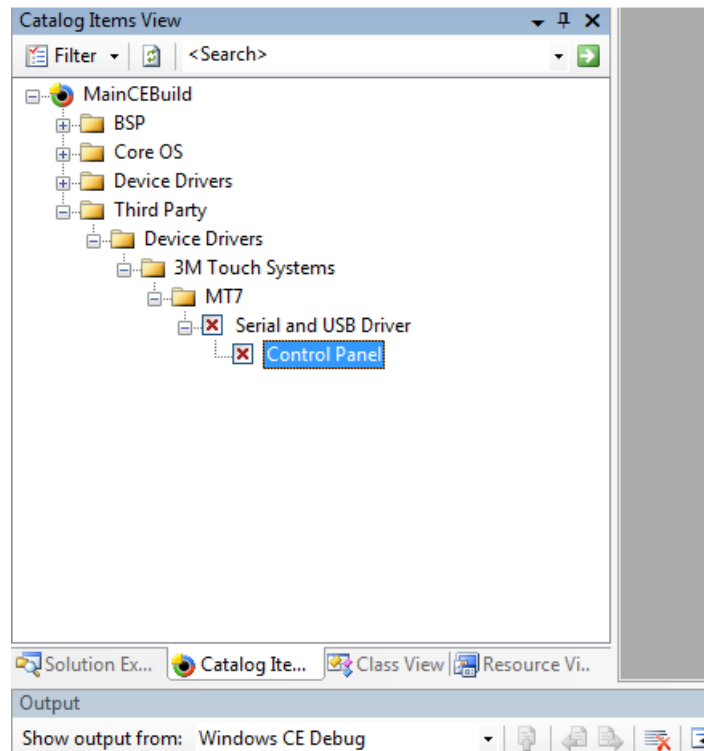
This is the final screen of the installation process and a notification of its completion. Click close to exit out of the screen.

The Installer places most its files in a central directory called "C:\WINCE600\PUBLIC\3MTOUCH." This allows multiple Platform Builder projects to access the same files.

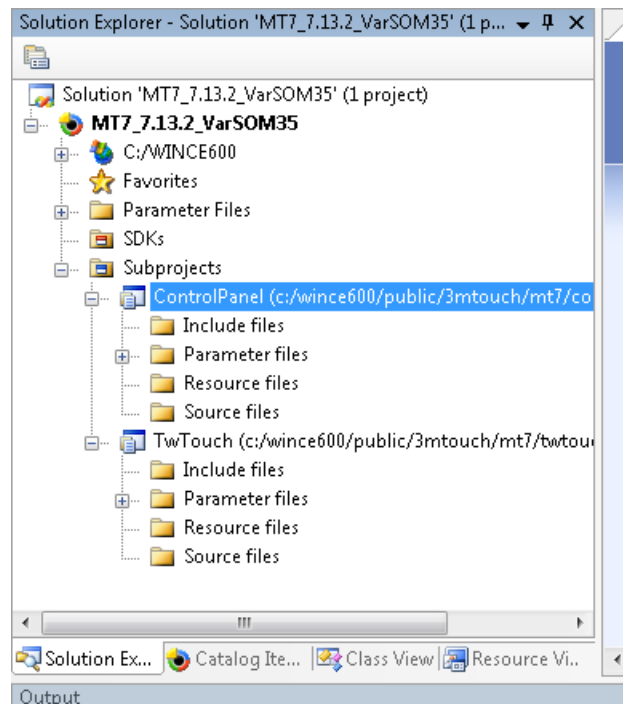
The Installer produces a catalog file, TwTouch.pbcxml that reflects the components that are installed and could be included in a project.

Instructions for Platform Builder for Microsoft Windows® CE 6.0 R3

As installed, MT 7 should operate under the Platform Builder for Windows® CE 6.0 R3 and above without any user changes. If you open a project for a CE 6.0 device using platform builder under Catalog Item Views, you will see an entry for MT7 drivers under Third Party→ Device Drivers→ 3M Touch Systems→ MT7.



Add the MT7 drivers and the Control Panel application by selecting the check boxes next to the MT7 catalog items. Once the relevant catalog items are selected, verify that the new items appear as subprojects in the Solution Explorer (as shown in the picture below).



Note: If you don't see MT 7 catalog items, you either did not install MT 7 into Windows CE 6.0 root directory or you need to reopen the current project.

Finally, perform a 'Rebuild Solution.' This creates the nk.bin file that will include the touch drivers and control panel application into your image. For the touch driver to work, you must include USB support in your Windows® CE image, regardless of the type of sensor you use.

Supporting Multiple Windows® CE Versions

This supports all 6.0 versions, if you're looking for support for CE 4.0-5.0 please refer to the legacy section of the website, www.3m.com/touch.

Supporting Multiple Projects

By default, the Installer places MT 7 in a central directory, or catalog, where it can be referenced by multiple projects. It also installs the TwTouch.reg and TwTouch.bib files in a single platform or project directory.

Slow Draw Anomalies

Using Draw mode can be slow on certain Windows® CE machines. For example, drawing a curve inside a draw application may produce ragged lines and the cursor may lag behind. The "IOPollDelay" parameter adjusts the behavior of draw mode. Adjusting the default value of this parameter may improve the behavior and appearance of the curve without affecting overall performance of the Windows® CE system. You can add this parameter to the system by editing the text file TwParams.reg found in C:\MT7_CE\x86. To add this parameter with a new default value insert the IOPollDelay line after the line below:

```
[HKEY_LOCAL_MACHINE\Drivers\BuiltIn\TwTouch\Parameters]
"IOPollDelay"=dword:1(value)
```

A value between 1 and 20, such as 10 may work best for your particular application. After adding or modifying the value of this parameter, you need to rebuild the Windows® CE image and test the draw behavior.

CHAPTER 4

Windows® XP Embedded Overview

MT 7 Software, a member of the MicroTouch™ Software Suite, provides unified driver support for MicroTouch touch technologies over a wide range of operating systems. This version supports Microsoft Windows® XP Embedded (XPe) operating system.

This product includes a Touch driver, Control Panel, Calibration Tool, and Multiple Display Tool that provide enhanced touch features on your system.

Installation Instructions

Using Windows® Explorer, browse to the software distribution and double-click on the Setup program to start the installation. If you downloaded the distribution, unzip the file into another directory beforehand.

Follow the instructions given by the Setup program. The installer loads the Touch driver and Utilities including On-line Help (optional) files on the development system.

The Installer puts the files in a default directory called C:\MT7_XPe\. You may select a different location if desired.

Loading MT 7 Into The Components Database Manager

Use the Microsoft Component Database Manager (CDM) to add the MT 7 components to your XPe database. In the CDM, go to the Database tab and click on the Import button. In the resulting dialog, browse to C:\MT7_XPe and select the MT7.SLD file. Click the Import button to make the MT 7 components available to Target Designer.

MT 7 Component Selection In Target Designer

Use the Microsoft Target Designer to select the specific MT 7 components you want for your target device. Inside the Target Designer, the Component Browser contains the MT 7 components you added with the CDM.

Use this Browser to select the MT 7 components for your target image. The only required component is the MT 7 Touch driver. In the Component Browser, look under "Hardware:Devices:Mice and other pointing devices". Select the 3M Touch Systems MT7 Touch driver.

Whether you are using a serial or USB controller, the MT7 touch driver requires USB support. You must include the XPe USB support component in your target device.

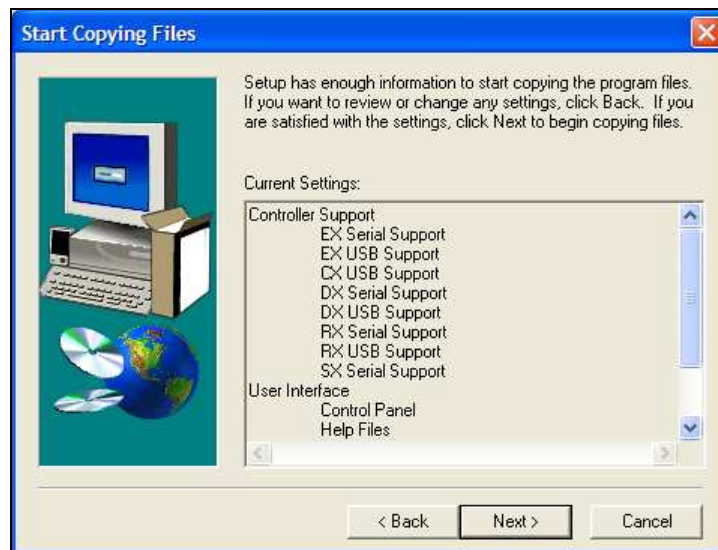
MT 7 Components

MT7 has several additional components, found in the Component Browser under "Software:Application:OEM," that you may select according to the needs of your target system.

The "MT7 Control Panel" component allows the end user to calibrate their sensor, configure, and modify some touch behavior.

The "MT7 Calibration Tool" component allows the user to calibrate their sensor.

Note that you must select one or more of the following controller support components to enable the previous tools.



CHAPTER 5

MT 7 for Linux® Overview

MT 7 for Linux® provides unified driver support for the Linux® operating system for kernel 2.4 and 2.6. This product includes a user-space sensor driver, an X input module, and a calibration tool.

System Requirements

Hardware Prerequisites

The MT 7 for Linux® software runs on most computers that run the Linux® kernel 2.4 and 2.6 operating system. The computer's processor must be compatible with the Intel x86 series of processors.

One or more of the following 3M™ MicroTouch™ touch controllers:

- EX USB, HID, and Serial controllers
- DX Dual mode (USB and Serial) controllers
- PX Dual mode (USB and Serial) controllers
- RX USB and Serial controllers
- SX Serial pen controllers

Depending on the sensor, either a serial port or a USB port is required.

Software Prerequisites

The MT 7 for Linux® software requires a Linux® operating system, kernel version 2.4 and 2.6. There are separate versions for 32-bit and 64-bit distributions of Linux operating systems.

- Shared memory support is required.
- The calibration tool requires an X11-compliant X Windows® server.
- The control panel requires a Java® runtime environment (JRE) compatible with Oracle® Java®.
- Install requires Perl©

Before Driver Installation

Know if your present Linux distribution will be compatible with the MT 7 driver. There are two terminal commands, which allow further preparation.

| | |
|-------------------|-------------------------------------|
| uname -r | This will show the kernel version |
| X -version | This will show the X Server Version |

Be aware that these commands are case sensitive. Here, the X must be uppercase.

Note: MT 7.13 Build 3 only supports X Server releases of rev 1.10 and before.

Installation Instructions

The MT 7 for Linux® software is proprietary and not open source. The distribution is an executable program. Run this program using the following command lines where **<version>** is replaced with the current file version number:

```
chmod a+x MT7.<version>.bin
./MT7.<version>.bin
```

You will then be asked to either accept or decline the license agreement. If you accept the agreement, the program produces a tar.gz file. Follow the remaining instructions to complete the installation process. For your convenience, the tar.gz file contains a copy of the license in the file License.txt.

Discuss expanding tar.gz file- As mentioned above the MT 7 for Linux® package arrives as a tar.gz file. By default, the expanded package resides in the subdirectory twscreen. An install script installs the package. Installation includes creating the necessary init script, creating symbolic links in **/usr/lib**, making a X input module available, enabling USB hotplug for 3M™ MicroTouch™ devices, and creating a Remove script.

General Instructions

Before installing the package, read below to see if any of these special situations apply to you. If they do, you may need to edit the Install script.

If you run the Install script and then discover errors, always run the Remove script to undo the installation. This removes possibly erroneous links into your system. Then edit the Install script, make the necessary changes, and install again.

Preparation

You must log in the Linux® operating system as the root user or use the **su** command to get super user access. On some systems, you may need to run in single user mode (run level 1 on some systems).

The installation process requires write access to various system directories. By default, the directories are:

- **/etc/udev** or **/etc/hotplug**

- `/usr/lib/xorg/modules/input` or `/usr/X11R6/lib/modules/input`
- `/usr/lib`
- `/etc/init.d` or `/etc/rc.d`
- `/etc/X11/xinit/xinitrc.d` or `/etc/X11/xsessions.d`

If your system does not have these directories you will need to edit the Install script as discussed in the Other Options.

After installation completes, the MT 7 for Linux® software no longer requires write access to these directories.

Normal Installation

Copy the tar.gz file into the directory where you want the package to reside, such as `/etc` or `/opt`. Issue the command `tar xzf twscreen.<version>.tar.gz` where `<version>` is a version number string of the tar.gz file. This creates the directory `twscreen` in the current directory. From there, go into the `twscreen` directory and issue the command `./Install`. This script installs links in the Linux® and X Windows system for your sensor to work with your system.

Installing on Write-Protected Systems

The MT 7 for Linux® software requires access to a writeable directory for runtime and configuration data. By default, it uses a 'data' directory in the `twscreen` directory. If you need to have the package in a read-only directory, then decide on a writeable directory for the package to use. Edit the Install script and search for the line `DataDir=""`. Change the definition of `DataDir` to the writeable directory. Save the changes and run the script. This creates the data directory where desired and creates a link in the package directory to the data directory.

Other Options

The MT 7 for Linux® software should install without other changes on most Linux® systems. However, if you have a customized directory structure or the installation script fails, you may need to edit the Install script and change one or more of the following script variables.

ConvertAtRead

The MT 7 for Linux® X input module translates raw touch data from the touch driver into the X Windows server display locations. Normally, the X server does this in two steps, first reading the raw input data from the input module and then having the module convert the coordinates as a second step. Some versions of the X.Org server code require that the input module return only converted coordinates in the single read step. This seems to apply only to early 1.4 versions of the server.

If you use this server, or if touch is inaccurate after calibration, change the `ConvertAtRead` value to `"true"`.

To determine the version of your X server, issue the command `X -version`.

HotplugDir

Refer to the symbol **UdevDir** for details.

InitDir

The MT 7 for Linux® software uses an init script, **TWDrvStartup**, to start and stop the touch driver. Normally, this runs at run level 5. If your init scripts are located in a directory other than **/etc/init.d** or **/etc/rc.d**, then set **InitDir** to the appropriate path.

JavaBinDir

Set this symbol to the path of the Java® runtime environment (JRE). This is needed to run the MT 7 Control Panel. If not set, the control panel will use the system's default "java" program.

LibDir

The MT 7 for Linux® software uses several shared objects. The Install script links these into **/usr/lib**. If your system's libraries are elsewhere, change this variable to point to the correct path. This directory is mandatory and the software cannot run without its libraries in a common library directory.

LSBDir

An init script must adhere to a variety of conventions. Some conventions use files, such as **function**, in the script directory. The variable **InitDir** handles these cases.

Some LSB-compliant systems require access to a file 'init-functions' normally found in **/lib/lsb**. If you have an LSB system and the init-functions file is not in **/lib/lsb**, you need to change the value of **LSBDir**.

SEDir1 and SEDir2

Some of the shared objects in the MT 7 for Linux® software require access to objects secured by SELinux. If the Install script detects SELinux, it assigns a security type to some shared objects. The script inspects the directories **/usr/selinux/booleans** and **/selinux/booleans** to determine if SELinux is active. If your SELinux is in a directory other than these, change the definition of one of these variables.

SEGivePermission

If the Install script detects SELinux, it assigns the security type **texrel_shlib_t** to some shared objects. If this is not appropriate for your system, edit the script and change this variable.

UdevDir and HotplugDir

The MT 7 for Linux® software supports hot plugging of USB controllers through either the udev or the hotplug systems. Older versions of Linux® used the hotplug system. The udev system replaced hotplug. It is on most current distributions. The Install script checks for udev support first. It assumes that the udev support files are in the directory **/etc/udev/**. If udev resides elsewhere, change the definition of **UdevDir** to the appropriate path.

The Install script assumes that the hotplug support files are in the directory `/etc/hotplug/`. If hotplug resides elsewhere, change the definition of `HotplugDir` to the appropriate path.

If you want to disable hot plugging of USB controllers, change both `UdevDir` and `HotplugDir` to non-existent paths.

XFree86Dir

Refer to the symbol `XorgDir` for details.

XinitDir and XinitSuffix

The MT 7 for Linux® runs some background tasks needed for full support of some user interface features. The Install script uses an X init script to launch these tasks.

The Install script automatically places the script `50MT7-xinit` into the `/etc/X11/xinit/xinitrc.d` and `/etc/X11/Xsession.d` directories. If your distribution requires the script to go into a different location, supply a value to the `XinitDir` variable in the Install script.

Some distributions require a suffix for these scripts. If needed, change the `XinitSuffix` value to the needed suffix. For example, if your distribution requires these scripts to have a `.sh`, change the `XinitSuffix` symbol to be `.sh`.

XorgConf

This symbol contains that path for `xorg.conf` file, normally `/etc/X11/xorg.conf`. MT 7 for Linux® must modify this file to register its drivers. If you use a different file, change the value of this symbol. If you do not use a configuration file, refer to '**Cannot find /etc/X11/xorg.conf**' in the section 'Error Messages During Installation'.

XorgDir and XFree86Dir

The MT 7 for Linux® software uses an X input module to get touch data into the X Windows server. The Install script inspects the paths `/usr/lib/xorg/modules/input` and `/usr/X11R6/lib/modules/input`. If your X input modules reside elsewhere, change the appropriate variable to the correct path.

Error Messages During Installation

This covers error messages generated by the Install script. Programs used by the script may generate their own messages. This section does not cover those messages.

Note: Not all will be the same depending on which version you are running

Cannot find needed libstdc++.so in /usr/lib

Variations of the message may refer to other directories depending on the setting of the LibDir variable in the Install script. The installation script could not find the standard C++ shared objects. Confirm that the LibDir variable is set correctly. If so, you need to install the C++ shared objects or, if already present, create a symbolic link using the name **libstdc++.so** to the C++ shared object. You also need to create a symbolic link named **libstdc++.so.5** or **libstdc++.so.6** depending on which version of library is on your system.

Cannot find shared memory support

The MT 7 for Linux® software uses shared memory. Some older Linux® systems do not provide this support and the package will not run. Contact 3M Touch Systems for other options.

Cannot find /etc/X11/xorg.conf

Variations of this error may occur if a system uses a different xorg.conf file.

MT 7 for Linux® uses an X input driver and requires this file so that the X server will load the driver. Since this file is optional, some systems do not have one present. If you use a different location for your xorg.conf file, edit the Install script and set the variable **XorgConf**. If no xorg.conf file is present on the system there are two methods of creating one.

The first method is to create XorgConfig. To do this, go to single user mode. Run the command 'X-configure.' This produces the file **~/xorg.conf**. Copy this file to **/etc/X11/xorg.conf**. Finish by restarting your system.

If the X Windows system restarts, you may proceed with the MT 7 installation. If X Windows does not start properly, get to a command prompt, it might be necessary to boot your system into single-user mode. Remove **/etc/X11/xorg.conf** and restart X Windows. If this happens you will need edit the xorg.conf file before placing it into /etc/X11/.

The second method is to edit the var-file. Copy the file **/var/log/Xorg.0.log** to another directory. Edit this file and look for a section where the X server says it is using a built-in configuration. Save just this section of the log file as a new xorg.conf file. Copy the new xorg.config file to **/etc/X11/xorg.conf** and restart X Windows. Proceed with the MT 7 installation.

Cannot install the init script

The Install script tries to detect the presence of the chkconfig and update-rc.d utilities and the `/etc/rc.d/rc.local` script. If it cannot find any of these, this message appears. If your system uses the chkconfig or update-rc programs, make sure the PATH environment variable contains the path to where the programs reside. If rc.local is in another directory, edit the Install script and change the value of the InitDir variable. If your system uses some other system, you need to place the init script **TWDrvStartup** in the appropriate place. The Install script creates a copy where the MT 7 for Linux® package resides. You may need to edit the TWDrvStartup script to work with your system.

Cannot install the X init script

The Install script could not determine where to install the X init script needed by MT 7 for Linux® to launch background tasks. Edit the Install script and set the XinitDir variable.

Cannot install the X input module

The Install script could not find the directory for the X input module. Confirm that the variable **XorgDir** or **XFree86Dir** is set correctly in the Install script.

Hot plugging of USB touch controllers is not supported

The Install script cannot find the udev or hotplug support files. If you do not need hot plugging of USB controllers, ignore this message. Otherwise, edit the Install script and change the UdevDir or Hotplug variable to an appropriate value.

Removing MT 7 For Linux

In the installation directory, run the script Remove. This removes the data directories and disengages MT 7 for Linux® from the system. The files remain. You must manually remove the files from the twscreen directory.

Troubleshooting The Init Script

Due to the variety of methods of running init scripts, the Install script makes a best guess as to when the TWDrvStartup script should run. This guess is occasionally wrong.

There are three critical considerations regarding the init script sequence.

1. The USB file system must be operational before the TWDrvStartup script runs. If not, the driver does not service USB touch controllers. A symptom of this is calibration does not work.
2. Any script that inspects serial ports must finish before the TWDrvStartup script runs. These programs can interfere with the driver's ability to detect and identify serial touch controllers. A symptom of this is touch or calibration not working.

3. The `TWDrvStartup` script must complete before running the X server. The `TWDrvStartup` script modifies the X server configuration file (either `xorg.cfg` or `xfree86.cfg`). When the system shuts down, these files are restored to their original state. It also starts the touch driver, `TwDriver`. Scripts that launch the X server reference the programs `xdm`, `gdm`, or `kdm`. Symptoms of this are a lack of touch or possibly erratic touch with USB touch controllers.

In each case, you need to rearrange the order of the init scripts to satisfy the requirements of the MT 7 for Linux® software. The method to do this is specific to your system's distribution.

Troubleshooting Touch Behavior

Many issues can affect touch.

If you have no touch, it is likely that the X Windows server is starting before the MT 7 for Linux® driver. First, inspect the X Windows configuration file, usually either `/etc/X11/xorg.conf` or `/etc/X11/xfree86.conf`, and see if there is an entry for the "twxinput" driver. If this entry is present, inspect the X Windows server log file, usually either `/var/log/Xorg.0.log` or `/var/log/XFree86.0.log`, to see if the driver loaded without error. If the entry is missing or there is an error in the log file, refer to the section above, "Troubleshooting the Init Script".

If the cursor reacts to a touch but does not appear under your finger, usually a simple calibration fixes the problem. If it does not, open a terminal window and type the command `"X -version"`. If the first line of the output starts with `X.Org X Server 1.4` then you may need to enable the "ConvertAtRead" option. Review the section on "Other Options" under "Installation" for details.

Running Touch Applications

There are two touch applications that you can run to customize the touch system. These programs reside in the directory where you installed the package.

1. The Calibration program aligns the sensor to the display's screen. You should run this program after installation or whenever adding a new sensor to the system. Run the program by running the `TwCalib` program.
2. The Control Panel provides more features to customize your touch system. Run this program as needed by running the `StartCP` script.

Note: This is a Java® program and runs with the JRE from Oracle®. If you experience problems running the Control Panel, download a JRE from www.oracle.com and install it.

You also need to edit the `StartCP` script to provide the proper path to the JRE.

Calibration Messages Are Unreadable

The Calibration program attempts to use a Helvetica font. If not found, it uses a relatively random font. This font may be unreadable.

To override this behavior, set the symbol `MT7FontSanSerif` to a proper X Windows font name. To find a suitable font, use the `xlsfonts` command or other suitable utility that lists the available fonts. In a command prompt, set the symbol, export it, and run the MT 7 calibration utility `TwCalib`. Experiment with the value of `MT7FontSansSerif` until the calibration text is suitable. For example, if MT 7 for Linux® is in `/etc/twscreen`, a test sequence may be:

```
MT7FontSansSerif="-*-utopia-*"  
export MT7FontSansSerif  
/etc/twscreen/TwCalib
```

You can also test your font string with `xlsfonts`. After setting `MT7FontSansSerif`, issue the command `xlsfonts -fn $MT7FontSansSerif` to see what font, if any, matches.

If you find a suitable font, change your system login script, such as `/etc/profile.local`, to set and export `MT7FontSansSerif`.

Known Issues

Refer to the `Readme.txt` file for a list of known issues associated with this release.

APPENDIX A

Multiple Monitor Setup (Windows® Only)

Overview

The Multiple Monitor Manager enables you to set up multiple monitors with touch screens. You must intentionally load this utility during installation in order to configure multiple displays.

To begin, ensure that you have unique identifiers for each controller. Check them from the Main tab – Controller ID. This field identifies the controller(s) attached to your system. If any controller ID value appears with a dot, (for example: USB00000001.1, USB00000001.2, etc.) you have two or more controllers with the same identifier. You must change these IDs before you run the multiple monitor manager.

Changing the Controller ID

To change the Controller ID:

1. These values may be edited from the Tools tab → Advanced Options menu and select “Enable controller identifier editing.” The resulting editable field appears on the Controller tab.
2. Controller ID values can be as simple as 00000001, 00000002, and 00000003.
3. Once the IDs are set, you are done. Exit the control panel.

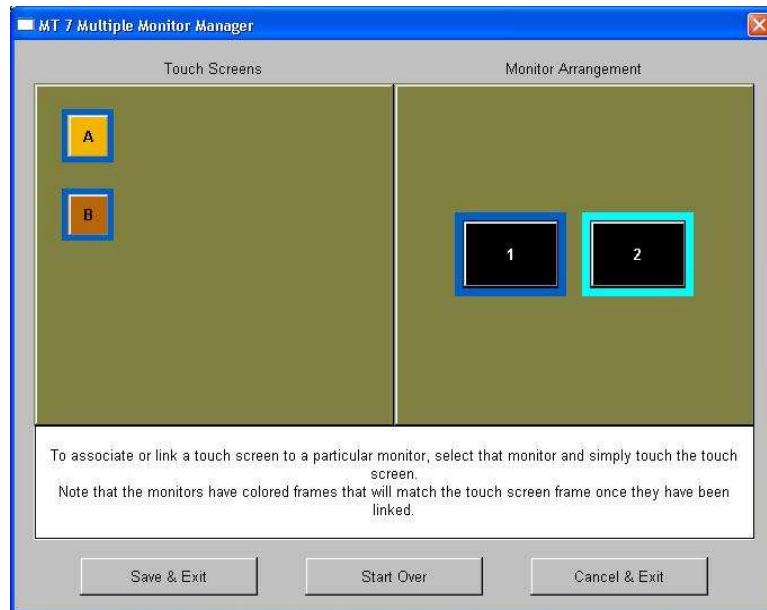
Setting Up Multiple Monitors

To setup Multiple Monitors:

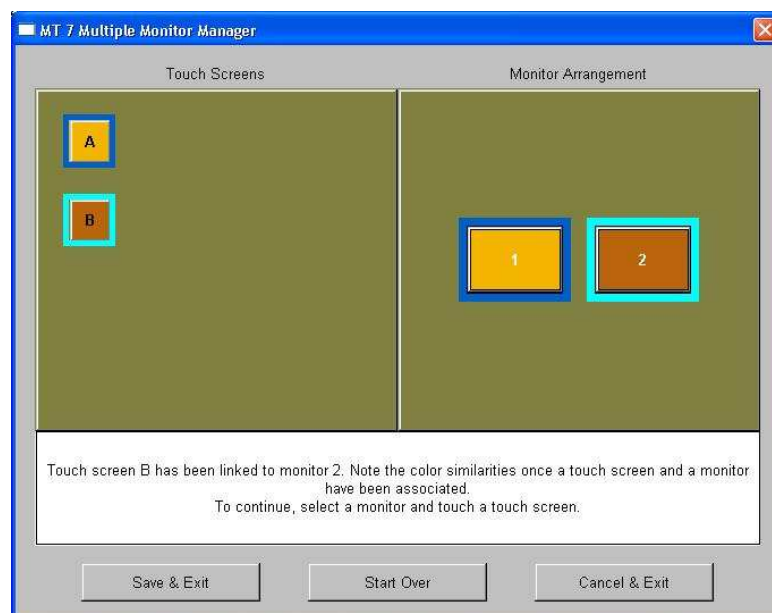
1. Open the MT 7 Multiple Monitor Manager by clicking: Start → Programs → MicroTouch MT 7 → MultiMonitor Manager.

2. To associate or link a sensor to a particular monitor, select that monitor and simply touch a touch screen. Note that the displays have colored frames that will blink when selected and match the touch screen frame once they have been linked.
3. Once you have linked your touch screen to monitors, you may choose to Save your changes, Cancel your changes or simply Start Over.

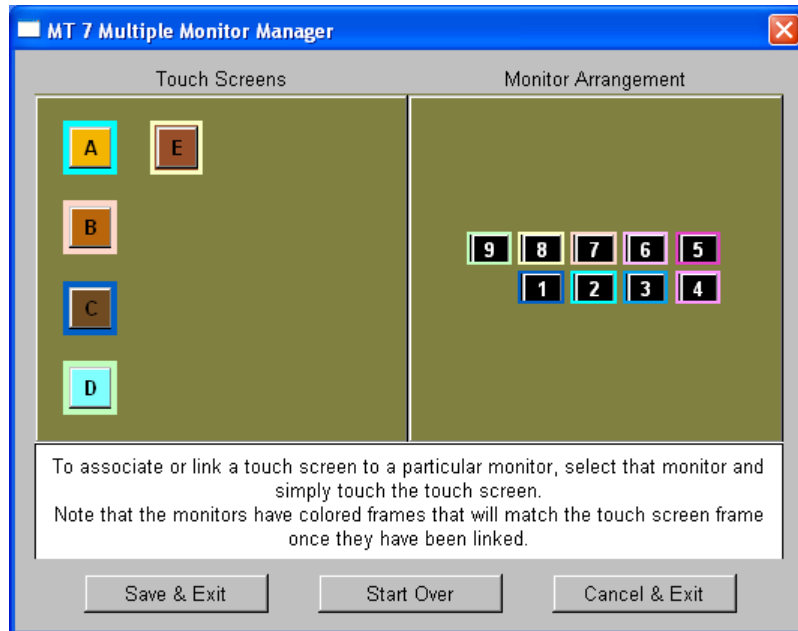
In the screen below, none of the touch screens or monitors has been linked.



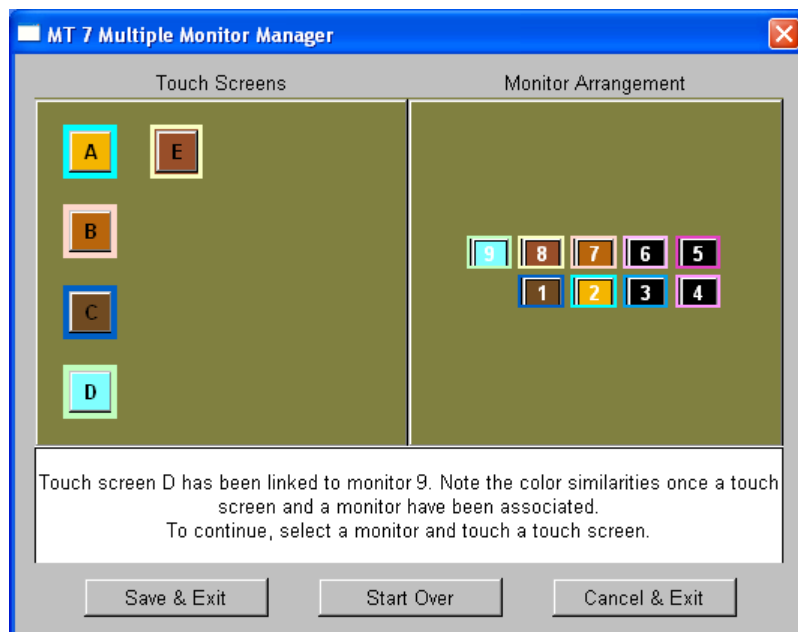
In the following example, Touch Screen A has been linked to Monitor 1 and Touch Screen B has been linked to Monitor 2. Note the color similarities once a Touch Screen and a Monitor have been associated.



In the following screen, there are 5 touch screens and 9 monitors that can be linked.



In the following example, touch Screen A has been linked to Monitor 2, Touch Screen B has been linked to Monitor 7, Touch Screen C has been linked to Monitor 1, Touch Screen D has been linked to Monitor 9, and Touch Screen E has been linked to Monitor 8. Note the color similarities once a Touch Screen and a Monitor have been associated.



APPENDIX B

Troubleshooting the Touch System

Overview

This chapter provides tips and strategies for problems you may encounter with the touch system either during installation or normal use.

3M Touch Systems, Inc. is committed to helping you get the most out of your touch system. If you are unable to resolve your problem using the troubleshooting information contained in this chapter, contact 3M Touch Systems, Inc. Technical Support. For information on how to reach technical support in your area, refer to the 3M Touch Systems, Inc. Support Services section at the beginning of this guide.

If you are experiencing problems with the sensor, check that all cables are connected properly and restart your system.

Verify that any previously loaded hardware and/or software installed in the same serial port as your sensor has been uninstalled. Even though the hardware has been disconnected, the software can still claim the port. Ensure that all components are completely removed from the system files.

To correct the communication settings in a Windows® system, use the Windows® Hardware Conflict Troubleshooter from Windows® Help.

Note: For specific troubleshooting information for Linux® systems, refer to Chapter 5.

Other Serial Devices Do Not Work

EX serial and SX pen controllers do not support plug and play functionality used by the Windows® operating system. MT 7 must search for these devices and that process can interfere with other serial devices on the same system.

If you do not have either of these controllers, rerun setup, select the upgrade option and under Controller Support deselect EX and SX pen controllers. Complete the software setup and reboot your system.

Important Note: Editing registry values may alter the performance of your system or render it inoperable. Create a backup of your Windows® system registry file before making any changes to these files. Refer to Microsoft Windows® Help for instructions on handling registry files.

If you do have either of these controllers, you will need to edit the registry file. In REGEDIT, browse to HKEY_LOCAL_MACHINE\System\CurrentControlSet\Services\TwTouch\Parameters. Create a new string value called SerialPortSearch. Assign a value to the set of COM ports with serial controllers (i.e., “COM1,COM3”). When complete, reboot your system.

Multiple Display Support

This release of the MT 7 control panel supports multiple displays. When installing MT 7, you must select the Multiple Monitor Manager tool to enable this function.

Cursor Does Not Reach Edges of Display

Try calibrating the touch sensor. When calibrating the sensor, be sure you touch the center of each target firmly and precisely. If additional tuning is necessary, use the Edge Adjustment Tab to enable greater ability to touch into corners and edges of the sensor.

Cursor is Jittery

You need to adjust the Sensor Frequency. Choose Sensor Frequency from the Controller tab. Any time you adjust the frequency you should test how the sensor is working and verify you are satisfied with the operation of the sensor.

Note: This option applies to capacitive EX series controllers.

Cursor Jumps or Bounces Suddenly Across the Display

You are most likely touching the sensor in more than one spot at the same time. Be sure to point and touch with one finger only. Keep your other fingers away from the touch sensor. Do not rest your other hand on the display or bezel at the same time.

Double-Click Doesn't Work (not available on Windows® CE or Linux®)

Use the Touch Settings tab to adjust the double-click speed and area. The double-click *speed* defines how quickly you must touch the sensor for the system to interpret your actions as a double-click. Set the double-click speed in the slow to medium range for optimum performance with a sensor.

The double-click *area* defines the space in which you must touch the sensor for the system to interpret your actions as a double-click. Set the double-click area in the medium to high range for optimum performance with a sensor.

Click on the globe to test the double-click speed and area settings. If globe begins to spin, the sensor recognized your touch as a double-click.

Note: Changing this setting will affect the double-click setting of the mouse.

Drawing Lines Are Not Straight and Smooth

Contact 3M Touch Systems, Inc. Technical Support for assistance performing a manual linearization.

Find Sensor (for Serial Plug & Play Controllers)

Note: This option applies to Windows® only.

1. Do a Find New Hardware from Windows® control panel.
2. Reinstall MT 7 using the Custom installation option and make sure you are choosing the correct controller support.
3. Reboot your system and try again. If the problem persists, call 3M Touch Systems, Inc. Technical Support.

Note: Verify that any previously loaded hardware and/or software installed in the same serial port as your sensor has been uninstalled. Even though the hardware has been disconnected, the software can still claim the port. Ensure that all components are completely removed from the system files.

Touch Is Not Working

If the controller information box on the Main Tab is grayed out and contains no information, the sensor is not communicating with the controller. If MT 7 does not find the sensor, check that the sensor is connected properly.

If you are experiencing problems with the sensor, check that all cables are connected properly and restart your system.

To correct the communication settings in a Windows® system, use the Windows® Hardware Conflict Troubleshooter from Windows® Help.

Note: Verify that any previously loaded hardware and/or software installed in the same serial port as your sensor has been uninstalled. Even though the hardware has been disconnected, the software can still claim the port. Ensure that all components are completely removed from the system files.

Check the following items:

1. Make sure the touch controller is connected to the correct port.
2. Review the installation procedures and verify all hardware is properly connected. Check the serial port and sensor cable connections. Check that the sensor and controller cables do not have any kinks and that connector pins are not bent.
3. Reset the sensor and its controller. Turn off both the computer and the display, wait a few minutes, and then turn on each device again.

Touch Driver Did Not Load

Check Windows® device manager under *mice and pointing devices* to see if the MicroTouch drive is loaded and running without errors (under *system devices* for the MicroTouch bus driver (used only for EX serial sensors)).

If these are missing, run `Installdriver.bat` inside `WINNT\Program Files\MicroTouch\MT7` to reload the driver.

If this does not work then run `Removedriver.bat`, reboot then rerun `Installdriver.bat`.

Right-click Tool Buttons Are Swapped

Using the control panel, it is possible to change which button on a mouse generates the "left" and "right" clicks. This feature allows left-handed people to use their index finger to produce a left click. This setting causes the touch driver to also reverse the meaning of a touch. Normally, a touch produces a left click. With the changed setting above, a touch starts producing a right-click.

To address this, edit the file "`TwFactory.cfg`" in the MT 7 for Windows™ software directory. If this file is empty, add in the text:

```
<Touch>
</Touch>
```

Between these two lines, add a new line:

```
SwapMouseButtons=1
```

Save the file.

Open a command line window and set your working directory to the MT 7 for Windows™ directory. Issue the command: `TwCfgUtil /u TwFactory.cfg`

At this point, your touches start producing the desired left-clicks.

If your system supports multiple users, you may need to create separate files, such as `TwLeft.cfg` and `TwRight.cfg`. In `TwLeft.cfg`, set `SwapMouseButtons` to 1 and in `TwRight.cfg`, set `SwapMouseButtons` to 0.

Add the above `TwCfgUtil` to each user's Startup menu or login script, using `TwLeft.cfg` or `TwRight.cfg` as appropriate.

A Previous Version of TouchWare Software Was Detected

Note: Before making any changes to the registry files, be sure to make a backup copy.

If the MT 7 installer reports this, then uninstall TouchWare by going to Start → Programs → TouchWare → Uninstall TouchWare. Do not install MT 7 over a previous version of software.

If this does not work (MT 7 still won't install) then the Registry needs editing. Start REGEDIT and browse to HKEY_LOCAL_MACHINE\SYSTEM\CurrentControlSet\Services\MTSTCH and delete the MTSTCH key.

Free Manuals Download Website

<http://myh66.com>

<http://usermanuals.us>

<http://www.somanuals.com>

<http://www.4manuals.cc>

<http://www.manual-lib.com>

<http://www.404manual.com>

<http://www.luxmanual.com>

<http://aubethermostatmanual.com>

Golf course search by state

<http://golfingnear.com>

Email search by domain

<http://emailbydomain.com>

Auto manuals search

<http://auto.somanuals.com>

TV manuals search

<http://tv.somanuals.com>