

Before you begin

You'll need the following hardware:

- RS485 to RS232 Converter Assembly Junction boxes (minimum of 2 plus one box for each additional terminal)
- Modular cable (minimum of 2 plus one cable for each additional terminal)
- Teflon Cable (lengths available: 100', 200', 500', 1000')
- Acroprint Data Collection Terminal (ADCT) including,
 - Power Supply
 - Wall Mount and 4 screws
 - Configuration Badge

Follow the setup instructions on this Quick Start sheet. For updates to the ATR20/20 documentation and last-minute product information, visit www.acroprint.com.

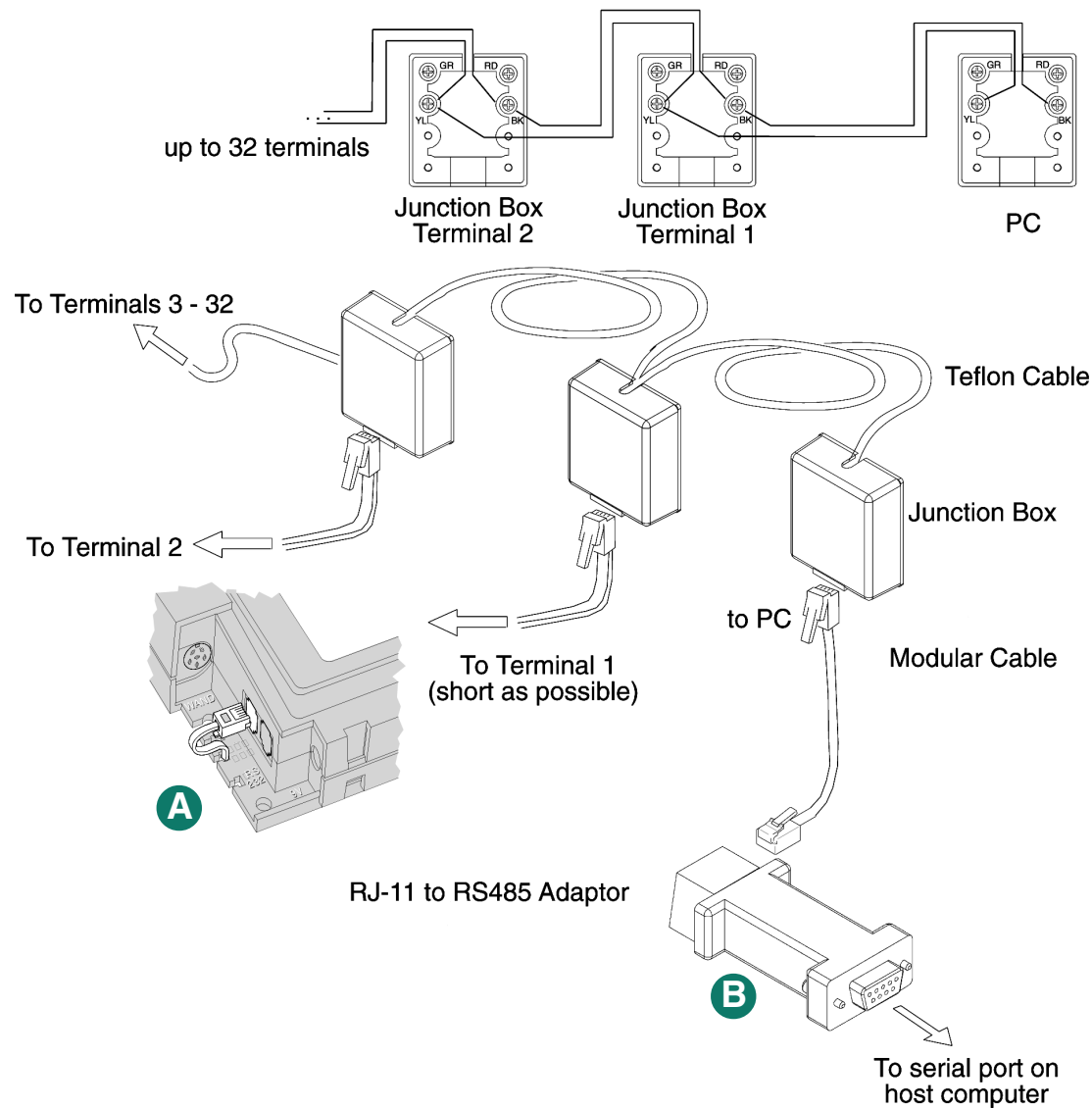
RS485 Wiring diagram

The RS485 Serial port is located on the left corner of the terminal. RS485 is imprinted on the terminal casing. **A**

RS485 communication allows up to 32 terminals to be connected to one serial port. An RS232 port on the host PC is used with an RS-232/RS485 converter to complete the connection. **B**

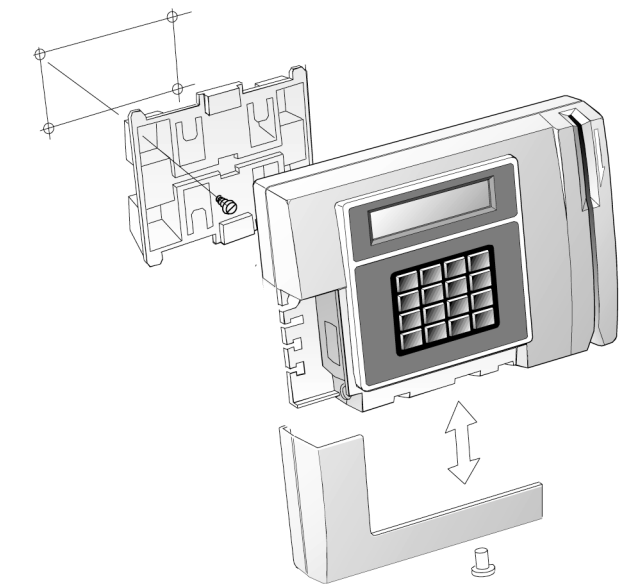
RS485 provides good protection from interference over long runs up to 4000 feet.

NOTE: When wiring a network, always follow the electric wiring codes in your area. Typically, a teflon coated wire is required for wiring through a ceiling. The junction box to junction box wire shown is a teflon jacketed cable.

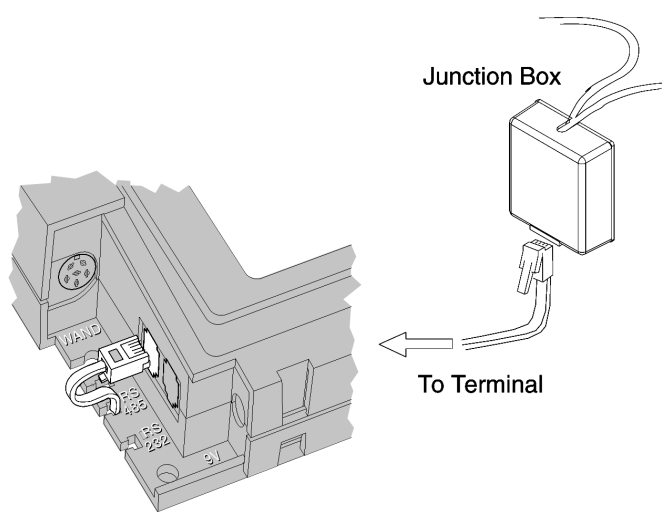


1 Cable connections on the computer & ADCT

- Remove cover to expose ADCT ports
- Route the RS485 and power cables behind the wall bracket.
- Secure the wall bracket with the supplied screws to a hard surface such as plywood.
- Mount the ADCT to the wall bracket.



2 Connect RS485 to the ADCT

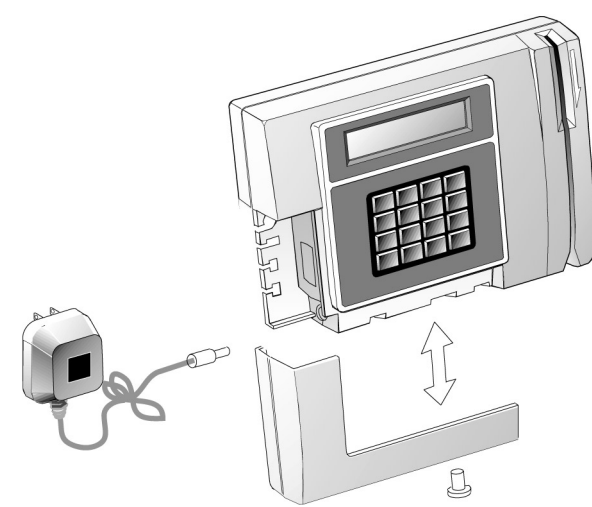


Make sure the power is off at both the time clock terminal and the PC, and the access door on the terminal is removed.

Using the supplied cable, connect the RJ-11 modular connector to the ADCT RS485 port on the lower left corner and the other end to the junction box.

Repeat for each ADCT terminal.

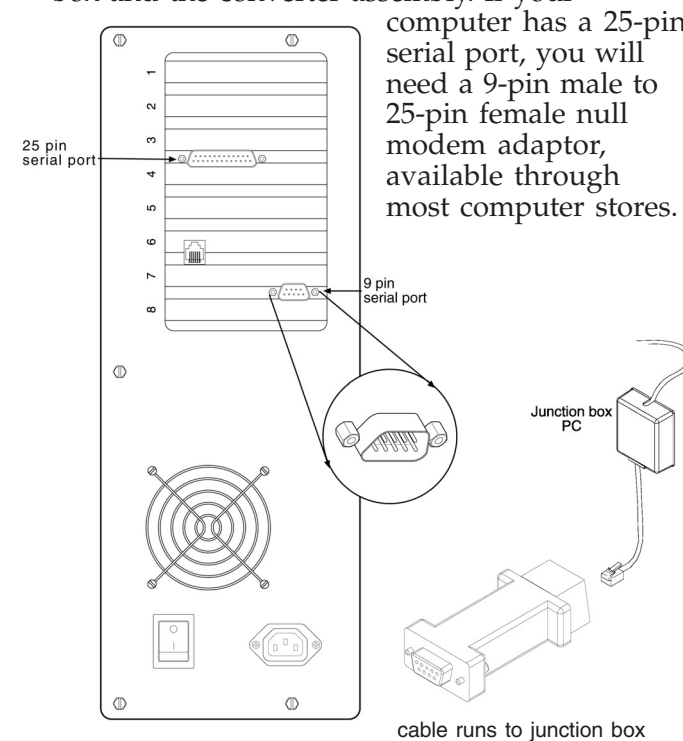
3 Connect power supply to the ADCT. Then plug into the wall.



Connect the power supply to the ADCT. Replace access door cover. Connect the power supply transformer to the wall power outlet. Observe proper supply voltage.

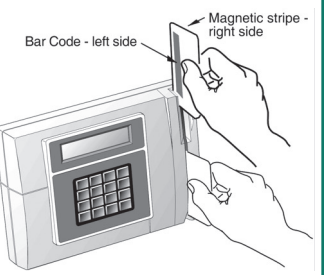
4 Connect RS485 to RS232 converter assembly to PC serial port

Connect the RS485 to RS232 converter assembly to the PC's 9 pin serial port. Connect the RJ11 modular cable between the junction box and the converter assembly.



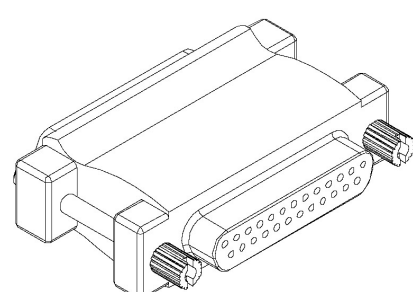
5 Setup terminal

- Swipe the configuration badge and select the desired option:
 - Option 1 Date and Time
 - Select DDMMYYYY
 - Select HHMM
 - Option 2 Ports
 - Select RS485 Communications (Default)
 - Select 9600 Speed (Default)
 - Select Parallel Printer Port (Default)
 - Transaction Timeout = 0
 - Terminal ID = 1 (Default)
 - *Multiple terminals require different terminal ID's.
 - Option 3 Readers
 - 1 - Internal barcode 3 of 9 (Default)
 - 2 - External barcode 3 of 9 (Default)
 - 3 - Magnetic stripe Track 2 (Default)
 - Option Test
 - 1 - Signals
 - 2 - Print



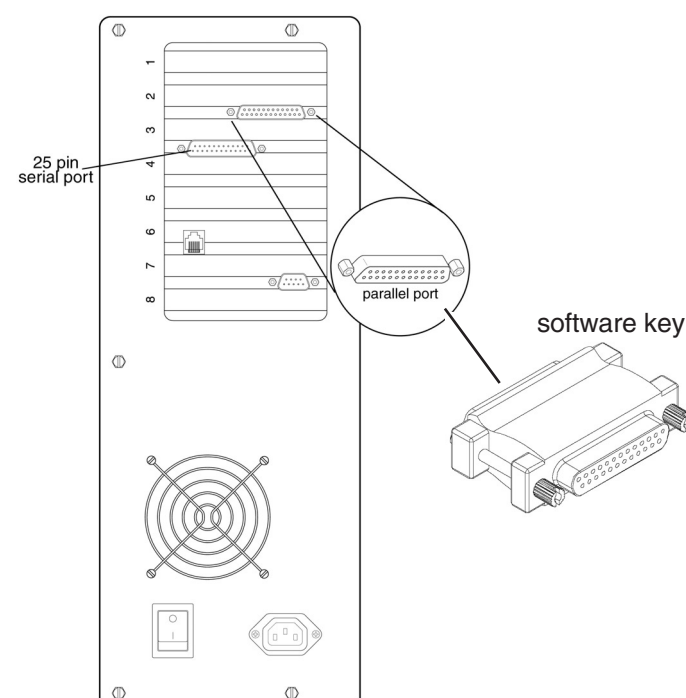
6 Before you begin the software installation, you need the following

- ATR20/20 Software on CD
- A software security key.



7 Attach security key to PC's parallel printer port

Connect the software security key to a working PC parallel printer port. If the PC parallel port has a printer cable attached, remove the printer cable from the PC and attach the software security key. Reattach the printer cable to the software key.



8 Software installation

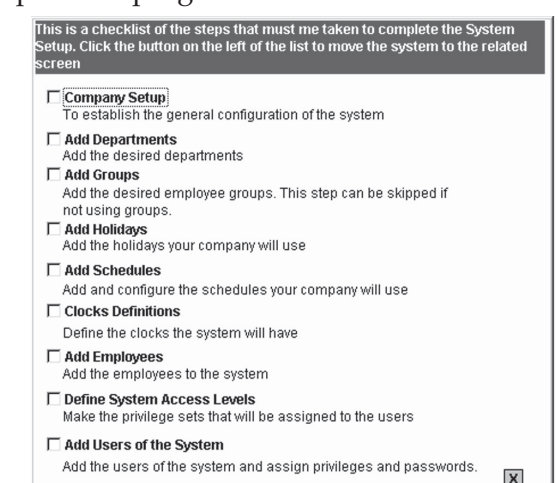
- Insert Software ATR20/20 into your CD-ROM drive.
- On the Install Menu Click on *Software Install*
 - If the install menu does not appear, click Start on the taskbar, select Run, type D:\Disk1\Setup.exe (where D is your CD's drive letter), then click **OK**.
 - Follow the instructions on the screen.

9 The Wizard Setup

Click on the ATR20/20 ICON on the desktop
To login type sysop for user and password for password.



The wizard will guide you through the complete setup of the program.



Free Manuals Download Website

<http://myh66.com>

<http://usermanuals.us>

<http://www.somanuals.com>

<http://www.4manuals.cc>

<http://www.manual-lib.com>

<http://www.404manual.com>

<http://www.luxmanual.com>

<http://aubethermostatmanual.com>

Golf course search by state

<http://golfingnear.com>

Email search by domain

<http://emailbydomain.com>

Auto manuals search

<http://auto.somanuals.com>

TV manuals search

<http://tv.somanuals.com>