

ADAMS

Sun Heat

Low Intensity Infra-Red Heaters

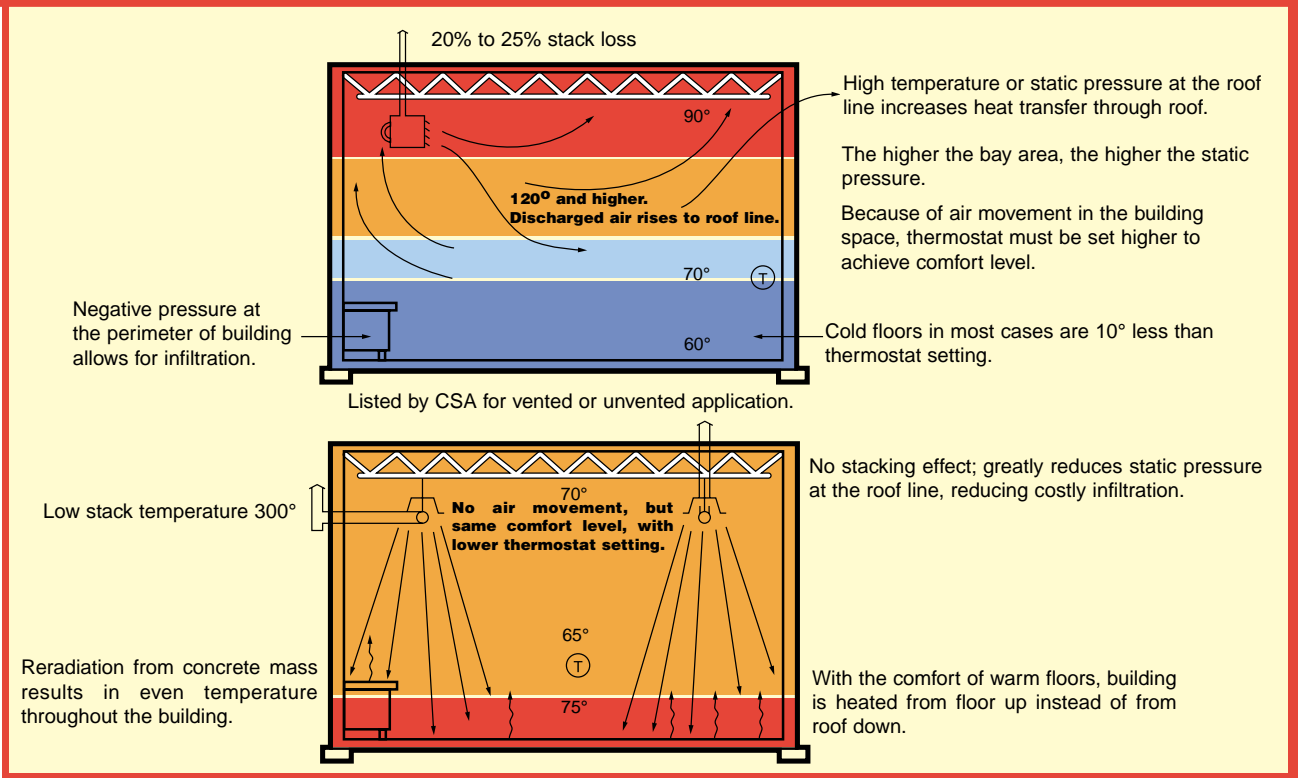


Sizes to fit Your Needs.....

“Sun-Heat” radiant system directs the heat down where it belongs...
fuel savings of 30% to 50%

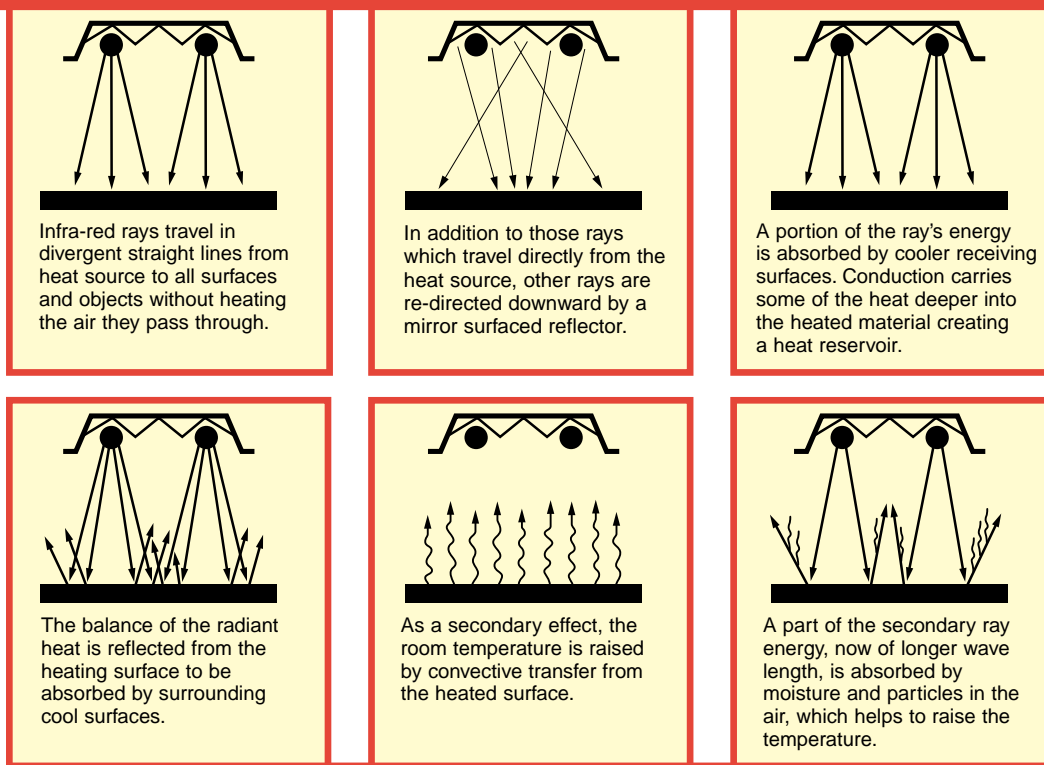
Compare conventional warm air to infra-red radiant heat.

Warm Air



What is infra-red and how does it work?

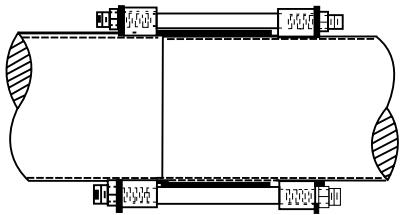
Radiant Heat



Sun-Heat Standard System Features

GAS BURNER

- Burner and controls CSA listed for United States and Canada
- Hot Surface ignition and electronic safety—No Pilot
- 60,000, 80,000, 100,000, 125,000, 150,000, 175,000, 200,000 Btu/hr input sizes (natural or propane gas)
- Combustion Air inlet collar
- Sight glass for monitoring burner operation
- Combustion air proving differential switch
- Electrical & gas controls separated from combustion air stream
- Burner Housing 18 GA. galvanized steel
- Electrical—120 volt/60/1 ph
- CSA listed for Vented or Unvented applications
- (1) year limited warranty

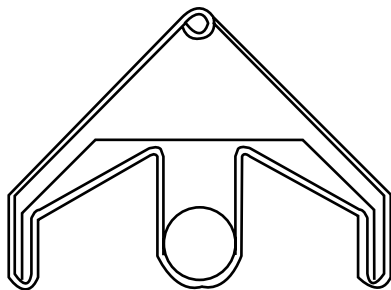


FLARED PIPE FORMS

Male-Female Type Connection
Compression Fitting
No Clamps or Draw Bands

TUBE SYSTEM

- Combustion chamber—10' x 4" OD, 16 gauge aluminized steel with flared burner mounting flange
- Heat exchanger— as required, remaining system comes in 10' or 5' 16 gauge aluminized steel
- Flared fitting pipe connector with draw bolts at each joint for solid compression type fitting—no gaskets or draw bands
- 20' to 70' systems—Straight systems or optional "L" or "U" shaped systems using 90 deg elbows. (see schedule for tube lengths available)
- 10 year limited warranty



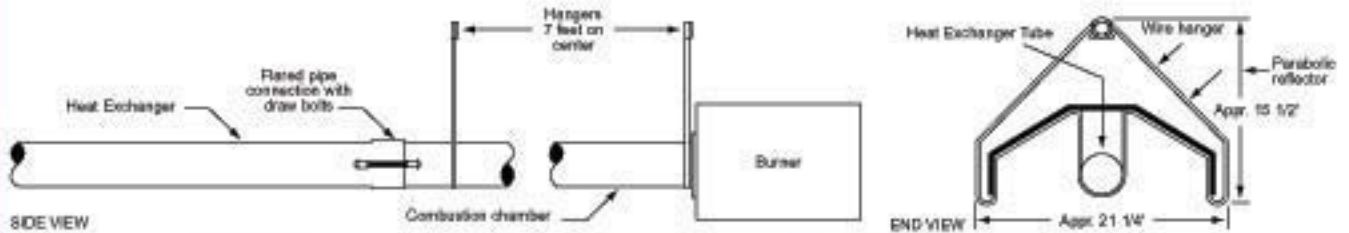
REFLECTORS

- High polished parabolic reflectors standard
- 8' or 4' lengths
- Reflector shield and tube system supported by heavy gauge wire hangers placed approx. 7' apart

OPTIONAL FEATURES

- Outside combustion air inlet hood with flexible 4" diameter duct
- 90 deg elbows for "L" or "U" shaped configurations
- Diffuser "V" reflector for low mounting applications
- Vent cap adapter (4" dia steel to 4" dia class "B" vent pipe)
- Line voltage thermostat
- 24 volt relay to convert line voltage thermostat to 24 volt thermostat
- Burner "ON" running light

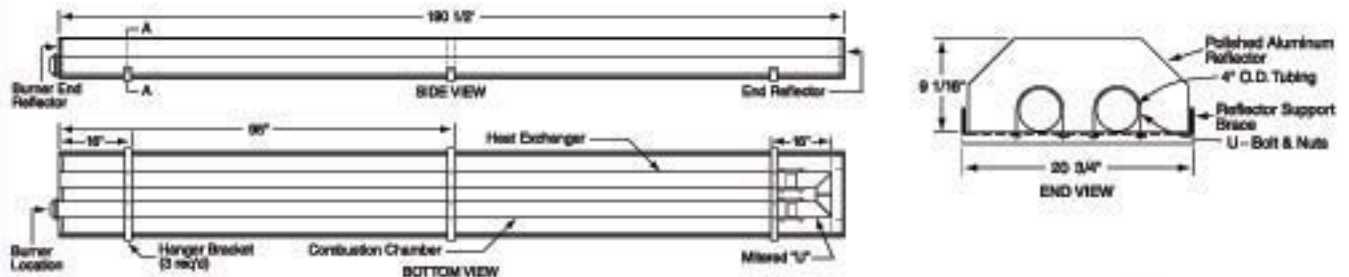
Adams ASH Series Radiant Tube Specifications



| Model No. and Tube Length | BTU/HR Input (Nat.-LP) | Average Mounting Height | Radiant Surface (Sq. Ft.) | Clearance to Combustibles | | | Manifold Pressure | | Shipping Weight (Lbs.) |
|---------------------------|------------------------|-------------------------|---------------------------|---------------------------|-----------------|-----------------|-------------------|----------|------------------------|
| | | | | Side* | Above Reflector | Below Reflector | Nat. | LP | |
| ASH-60-20' | 60,000 | 10' - 15' | 20 | 20" | 2" | 50" | 3.5" W.C. | 10" W.C. | 170 |
| ASH-60-30' | 60,000 | 10' - 15' | 30 | 20" | 2" | 50" | 3.5" W.C. | 10" W.C. | 200 |
| ASH-80-30' | 80,000 | 10' - 15' | 30 | 20" | 2" | 50" | 3.5" W.C. | 10" W.C. | 200 |
| ASH-80-40' | 80,000 | 12' - 18' | 40 | 20" | 2" | 50" | 3.5" W.C. | 10" W.C. | 230 |
| ASH-100-30' | 100,000 | 12' - 18' | 30 | 20" | 2" | 50" | 3.5" W.C. | 10" W.C. | 200 |
| ASH-100-40' | 100,000 | 14' - 22' | 40 | 20" | 2" | 50" | 3.5" W.C. | 10" W.C. | 230 |
| ASH-100-50' | 100,000 | 14' - 22' | 50 | 20" | 2" | 50" | 3.5" W.C. | 10" W.C. | 260 |
| ASH-125-40' | 125,000 | 15' - 25' | 40 | 20" | 2" | 70" | 3.5" W.C. | 10" W.C. | 230 |
| ASH-125-50' | 125,000 | 15' - 25' | 50 | 20" | 2" | 70" | 3.5" W.C. | 10" W.C. | 260 |
| ASH-150-50' | 150,000 | 18' - 30' | 50 | 20" | 2" | 70" | 3.5" W.C. | 10" W.C. | 260 |
| ASH-150-60' | 150,000 | 18' - 30' | 60 | 20" | 2" | 70" | 3.5" W.C. | 10" W.C. | 290 |
| ASH-175-50' | 175,000 | 18' - 30' | 50 | 20" | 2" | 70" | 3.5" W.C. | 10" W.C. | 260 |
| ASH-175-60' | 175,000 | 18' - 30' | 60 | 20" | 2" | 70" | 3.5" W.C. | 10" W.C. | 290 |
| ASH-175-70' | 175,000 | 18' - 30' | 70 | 20" | 2" | 70" | 3.5" W.C. | 10" W.C. | 330 |
| ASH-200-50' | 200,000 | 18' - 30' | 50 | 20" | 2" | 70" | 3.5" W.C. | 10" W.C. | 260 |
| ASH-200-60' | 200,000 | 18' - 30' | 60 | 20" | 2" | 70" | 3.5" W.C. | 10" W.C. | 290 |
| ASH-200-70' | 200,000 | 18' - 30' | 70 | 20" | 2" | 70" | 3.5" W.C. | 10" W.C. | 330 |

Pre-Assembled U TUBE Radiant Tube Heating Systems... 8 or 16 Feet Long

| | | | | | | | | | |
|--------------|---------|-----------|----|-----|-----|-----|-----------|----------|-----|
| UASH-30-8' | 30,000 | 8' - 10' | 16 | 28" | 12" | 90" | 3.5" W.C. | 10" W.C. | 160 |
| UASH-45-8' | 45,000 | 9' - 12' | 16 | 28" | 12" | 90" | 3.5" W.C. | 10" W.C. | 160 |
| UASH-60-8' | 60,000 | 10' - 15' | 16 | 28" | 12" | 90" | 3.5" W.C. | 10" W.C. | 160 |
| UASH-60-16' | 60,000 | 10' - 15' | 32 | 28" | 12" | 90" | 3.5" W.C. | 10" W.C. | 200 |
| UASH-80-16' | 80,000 | 10' - 18' | 32 | 28" | 12" | 90" | 3.5" W.C. | 10" W.C. | 200 |
| UASH-100-16' | 100,000 | 12' - 22' | 32 | 28" | 12" | 90" | 3.5" W.C. | 10" W.C. | 200 |



ADAMS
MANUFACTURING COMPANY

9790 Midwest Ave.
Cleveland, Ohio 44125
Telephone (216) 587-6801
Fax (216) 587-6807

Free Manuals Download Website

<http://myh66.com>

<http://usermanuals.us>

<http://www.somanuals.com>

<http://www.4manuals.cc>

<http://www.manual-lib.com>

<http://www.404manual.com>

<http://www.luxmanual.com>

<http://aubethermostatmanual.com>

Golf course search by state

<http://golfingnear.com>

Email search by domain

<http://emailbydomain.com>

Auto manuals search

<http://auto.somanuals.com>

TV manuals search

<http://tv.somanuals.com>