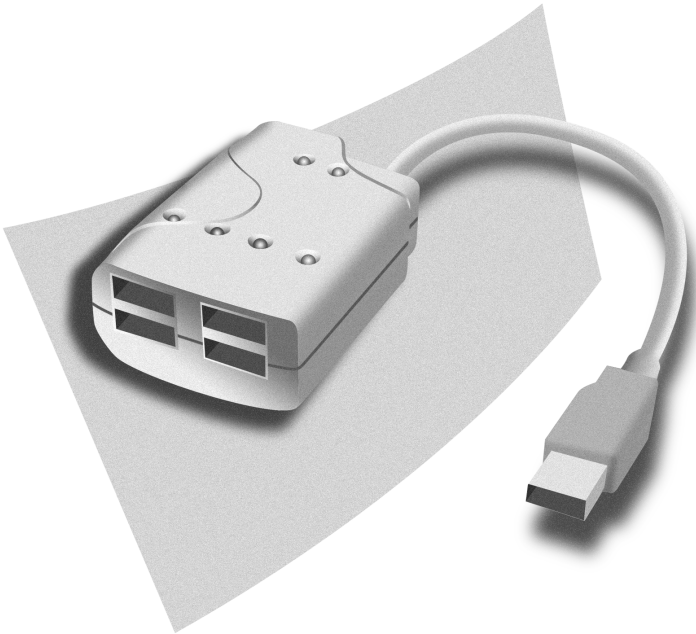


XHub for Notebooks

User's Guide



 **adaptec**[®]

Copyright

© 2002 Adaptec, Inc. All rights reserved. No part of this publication may be reproduced, stored in a retrieval system, or transmitted in any form or by any means, electronic, mechanical, photocopying, recording or otherwise, without the prior written consent of Adaptec, Inc., 691 South Milpitas Blvd., Milpitas, CA 95035.

Trademarks

Adaptec, the Adaptec logo, XHub, and USBControl are trademarks of Adaptec, Inc., which may be registered in some jurisdictions.

Windows 98SE, Windows 2000, Windows Me, and Windows XP are trademarks of Microsoft Corporation in the US and other countries, used under license.

Macintosh is a registered trademark of Apple Computer, Inc. used under license.

All other trademarks are the property of their respective owners.

Changes

The material in this document is for information only and is subject to change without notice. While reasonable efforts have been made in the preparation of this document to assure its accuracy, Adaptec, Inc. assumes no liability resulting from errors or omissions in this document, or from the use of the information contained herein.

Adaptec reserves the right to make changes in the product design without reservation and without notification to its users.

Disclaimer

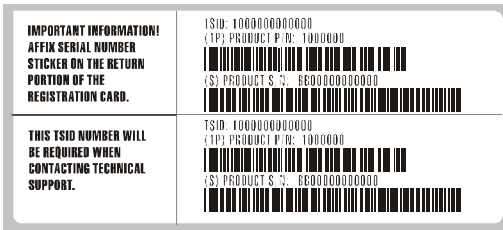
IF THIS PRODUCT DIRECTS YOU TO COPY MATERIALS, YOU MUST HAVE PERMISSION FROM THE COPYRIGHT OWNER OF THE MATERIALS TO AVOID VIOLATING THE LAW WHICH COULD RESULT IN DAMAGES OR OTHER REMEDIES.

Adaptec Technical Support

If you have questions about installing or using your Adaptec product, check this document first—you will find answers to most of your questions here. If you need further assistance, use the support options listed below.

Technical Support Identification (TSID) Number

- Before contacting Technical Support, you need your unique 12-digit TSID number. The TSID number identifies your product and support status.
- The TSID number is included on two white, bar-coded labels, like the example below. Affix your TSID label to the printed *Installation Guide*.



Support Options

- Search the Adaptec Support Knowledgebase (ASK) at ask.adaptec.com for articles, troubleshooting tips, and frequently asked questions for your product.
- For support via Email, submit your question to Adaptec's Technical Support Specialists at ask.adaptec.com.
- To order Adaptec products, including accessories and cables, call +1 408-957-7274. Or, you can order cables online at www.adaptec.com/buy-cables.

Europe

- Visit our Web site at www.adaptec-europe.com.
- **German and English:** Search the Adaptec Support Knowledgebase (ASK) at ask-de.adaptec.com for articles, troubleshooting tips, and frequently asked questions for your product.
For support via e-mail, submit your question to Adaptec's Technical Support Specialists at ask-de.adaptec.com.
- **French:** Search the Adaptec Support Knowledgebase (ASK) at ask-fr.adaptec.com for articles, troubleshooting tips, and frequently asked questions for your product.
For support via e-mail, submit your question to Adaptec's Technical Support Specialists at ask-fr.adaptec.com.
- To order Adaptec products, including accessories and cables, call +44 118 934 6160. Or, you can order cables online at www.adaptec.com/buy-cables.

Australia and New Zealand

- Visit our Web site at www.adaptec.com.au.
- For support via e-mail, submit your question to Adaptec's Technical Support Specialists at ask.adaptec.com.

Hong Kong and China

- Visit our Web site at www.adaptec.com.
- Fax Technical Support at +852 2869 7100.

Singapore

- Visit our Web site at www.adaptec.com.

Japan

- Search the Adaptec Support Knowledgebase (ASK) at ask.adaptec.co.jp
- Visit our Web site at www.adaptec.co.jp.

Limited 1-Year Hardware Warranty

1. Adaptec, Inc. ("Adaptec") warrants to the purchaser of this product that it will be free from defects in material and workmanship for a period of one (1) year from the date of purchase. If the product should become defective within the warranty period, Adaptec, at its option, will repair or replace the product, or refund the purchaser's purchase price for the product, provided it is delivered at the purchaser's expense to an authorized Adaptec service facility or to Adaptec.
2. Repair or replacement parts or products will be furnished on an exchange basis and will either be new or reconditioned. All replaced parts or products shall become the property of Adaptec. This warranty shall not apply if the product has been damaged by accident, misuse, abuse or as a result of unauthorized service or parts.
3. Warranty service is available to the purchaser by delivering the product during the warranty period to an authorized Adaptec service facility or to Adaptec and providing proof of purchase price and date. The purchaser shall bear all shipping, packing and insurance costs and all other costs, excluding labor and parts, necessary to effectuate repair, replacement or refund under this warranty.
4. For more information on how to obtain warranty service, write or telephone Adaptec at 691 South Milpitas Boulevard, Milpitas, CA 95035, (800) 959-7274.
5. THIS LIMITED WARRANTY DOES NOT EXTEND TO ANY PRODUCT WHICH HAS BEEN DAMAGED AS A RESULT OF ACCIDENT, MISUSE, ABUSE, OR AS A RESULT OF UNAUTHORIZED SERVICE OR PARTS.
6. THIS WARRANTY IS IN LIEU OF ALL OTHER EXPRESS WARRANTIES WHICH NOW OR HEREAFTER MIGHT OTHERWISE ARISE RESPECT TO THIS PRODUCT. IMPLIED WARRANTIES, INCLUDING THOSE OF MERCHANTABILITY, FITNESS FOR A PARTICULAR PURPOSE AND NON-INFRINGEMENT SHALL (A) HAVE NO GREATER DURATION THAN 1 YEAR FROM THE DATE OF PURCHASE, (B) TERMINATE AUTOMATICALLY AT THE EXPIRATION OF SUCH PERIOD AND (C) TO THE EXTENT PERMITTED BY LAW BE EXCLUDED. IN THE EVENT THIS PRODUCT BECOMES DEFECTIVE DURING THE WARRANTY PERIOD, THE PURCHASER'S EXCLUSIVE REMEDY SHALL BE REPAIR, REPLACEMENT OR REFUND AS PROVIDED ABOVE. INCIDENTAL OR CONSEQUENTIAL DAMAGES, INCLUDING WITHOUT LIMITATION LOSS OF DATA, ARISING FROM BREACH OF ANY EXPRESS OR IMPLIED WARRANTY ARE NOT THE RESPONSIBILITY OF ADAPTEC AND, TO THE EXTENT PERMITTED BY LAW, ARE HEREBY EXCLUDED BOTH FOR PROPERTY DAMAGE, AND TO THE EXTENT NOT UNCONSCIONABLE, FOR PERSONAL INJURY DAMAGE.
7. SOME STATES DO NOT ALLOW THE EXCLUSION OR LIMITATION OF INCIDENTAL OR CONSEQUENTIAL DAMAGES FOR CONSUMER PRODUCTS, AND SOME STATES DO NOT ALLOW LIMITATIONS ON HOW LONG AN IMPLIED WARRANTY LASTS, SO THE ABOVE LIMITATION OR EXCLUSIONS MAY NOT APPLY TO YOU.
8. This warranty gives you specific legal rights, and you may also have other rights which vary from state to state.

Adaptec Software License Agreement

PLEASE READ CAREFULLY: THE USE OF THIS SOFTWARE IS SUBJECT TO THE SOFTWARE LICENSE TERMS OF ADAPTEC, INC. AND OTHER LICENSORS WHOSE SOFTWARE MAY BE BUNDLED WITH THIS PRODUCT.

BY YOUR USE OF THE SOFTWARE INCLUDED WITH THIS PRODUCT YOU AGREE TO THE LICENSE TERMS REQUIRED BY THE LICENSOR OF THAT SOFTWARE, AS SET FORTH DURING THE INSTALLATION PROCESS. IF YOU DO NOT AGREE TO THE LICENSE TERMS APPLICABLE TO THE SOFTWARE, YOU MAY RETURN THE ENTIRE UNUSED PRODUCT FOR A FULL REFUND.

In return for acquiring a license to use the Adaptec software, which may include software from third party licensors and patches made available by Adaptec ("Software"), and the related documentation, you agree to the following terms and conditions:

1. License. This Agreement grants you, the Licensee, a license to:
 - a. Use the Software on a single computer system, which is not intended for use by more than five (5) users; and:
 - b. Make one copy of the Software in machine readable form solely for back-up purposes, provided you reproduce Adaptec's copyright proprietary legends. Notwithstanding the foregoing, the Software may be used on the home, laptop or other secondary computer of the principal user of the Software, and an additional copy of the Software may be made to support such use. As used in this license, the Software is "in use" when it is either loaded into RAM or installed on a hard disk or other permanent memory device. The Software may be "in use" on only one computer at any given time. (Different license terms and fees are applicable for networked or multiple user applications.) As a specific condition of this license, you agree to use the Software in compliance with all applicable laws, including copyright laws, and that you will not copy, transmit, perform or distribute any audio or other content using the Software without obtaining all necessary licenses or permissions from the owner of the content.
2. Restrictions. You may not distribute copies of the Software to others or electronically transfer the Software from one computer to another over a network. You may not post or otherwise make available the Software, or any portion thereof, in any form, on the Internet. You may not use the Software in a computer service business, including in time sharing applications. The Software contains trade secrets and, in order to protect them, you may not decompile, reverse engineer, disassemble, or otherwise reduce the Software to a human-perceivable form. YOU MAY NOT MODIFY, ADAPT, TRANSLATE, RENT, LEASE, LOAN, RESELL FOR PROFIT, DISTRIBUTE, NETWORK OR CREATE DERIVATIVE WORKS BASED UPON THE SOFTWARE OR ANY PART THEREOF.
3. Ownership of Software. As Licensee, you own the media upon which the software is recorded or fixed, but Adaptec and its licensors retain title and ownership of the Software recorded on the original media and all subsequent copies of the Software, regardless of the form or media in which or on which the original and other copies may exist. This license is not a sale of the Software or any copy.
4. Confidentiality. You agree to maintain the Software in confidence and that you will not disclose the Software to any third party without the express written consent of Adaptec. You further agree to take all reasonable precautions to preclude access of unauthorized persons to the Software.
5. Term. This license is effective until January 1, 2045, unless terminated earlier. You may terminate the license at any time by destroying the Software (including the related documentation) together with all copies or modifications in any form. Adaptec will have the right to terminate our license immediately if you fail to comply with any term or condition of this Agreement. Upon any termination, including termination by you, you must destroy the Software (including the related documentation), together with all copies or modifications in any form.
6. Special Terms Applicable to Databases. Where a database is included with the Software, you acknowledge that it is licensed only in connection with the use of the Software to perform disc creation, and that the database and all data derived therefrom must be maintained in confidence in accordance with the provisions of Section 4. This license does not grant you any rights to distribute or disclose such database or data.

7. Limited Warranty. Adaptec and its Licensor warrant only that the media upon which the Software is furnished will be free from defects in material or workmanship under normal use and service for a period of thirty (30) days from the date of delivery to you. ADAPTEC AND ITS LICENSORS DO NOT AND CANNOT WARRANT THE PERFORMANCE OR RESULTS YOU MAY OBTAIN BY USING THE SOFTWARE OR DOCUMENTATION. THE FOREGOING STATES THE SOLE AND EXCLUSIVE REMEDIES ADAPTEC AND ITS LICENSORS WILL PROVIDE FOR BREACH OF WARRANTY. EXCEPT FOR THE FOREGOING LIMITED WARRANTY, ADAPTEC AND ITS LICENSORS MAKE NO WARRANTIES, EXPRESSED OR IMPLIED, INCLUDING, BUT NOT LIMITED, AS TO NON-INFRINGEMENT OF THIRD PARTY RIGHTS, MERCHANTABILITY OR FITNESS FOR A PARTICULAR PURPOSE. Some states do not allow the exclusion of implied warranties or limitations on how long an implied warranty may last, so the above limitations may not apply to you. This warranty gives you specific legal rights and you may also have other rights which vary from state to state.
8. The entire liability of Adaptec and its licensors, and your exclusive remedy for a breach of this warranty, shall be:
 - a. The replacement of any media not meeting the above limited warranty which is returned to Adaptec; or
 - b. if Adaptec or its distributor is unable to deliver replacement media which is free from defects in materials or workmanship, you may terminate this Agreement by returning the Software and your money will be refunded.
9. Limitation of Liability. IN NO EVENT WILL ADAPTEC OR ITS LICENSORS BE LIABLE TO YOU FOR ANY INCIDENTAL, CONSEQUENTIAL OR INDIRECT DAMAGES, INCLUDING ANY LOST PROFITS, LOST SAVINGS, OR LOSS OF DATA, EVEN IF ADAPTEC OR A LICENSOR HAS BEEN ADVISED OF THE POSSIBILITY OF SUCH DAMAGES, OR FOR ANY CLAIM BY ANY OTHER PARTY. Some states do not allow the exclusion or limitation of special, incidental, or consequential damages, so the above limitation or exclusion may not apply to you.
10. Export. You acknowledge that the laws and regulations of the United States and other countries may restrict the export and re-export of the Software. You agree that you will not export or re-export the Software or documentation in any form in violation of applicable United States and foreign law.
11. Government Restricted Rights. The Software is subject to restricted rights as follows. If the Software is acquired under the terms of a GSA contract: use, reproduction or disclosure is subject to the restrictions set forth in the applicable ADP Schedule contract. If the Software is acquired under the terms of a DoD or civilian agency contract, use, duplication or disclosure by the Government is subject to the restrictions of this Agreement in accordance with 48 C.F.R. 12.212 of the Federal Acquisition Regulations and its successors and 49 C.F.R. 227.7202-1 of the DoD FAR Supplement and its successors.
12. General. You acknowledge that you have read this Agreement, understand it, and that by using the Software you agree to be bound by its terms and conditions. You further agree that it is the complete and exclusive statement of the agreement between Adaptec and you, and supersedes any proposal or prior agreement, oral or written, and any other communication between Adaptec and you relating to the subject matter of this Agreement. No additional or any different terms will be enforceable against Adaptec unless Adaptec gives its express consent, including an express waiver of the terms of this Agreement, in writing signed by an officer of Adaptec. You assume full responsibility for the use of the Software and agree to use the Software legally and responsibly. This Agreement shall be governed by California law, except as to copyright matters, which are covered by Federal law. This Agreement is deemed entered into at Milpitas, California by both parties. Should any provision of this Agreement be declared unenforceable in any jurisdiction, then such provision shall be deemed severable from this Agreement and shall not affect the remainder hereof. All rights in the Software not specifically granted in this Agreement are reserved by Adaptec.

Should you have any questions concerning this Agreement, you may contact Adaptec by writing to:

Adaptec, Inc.
Legal Department
691 South Milpitas Boulevard
Milpitas, California 95035

Regulatory Compliance Statements

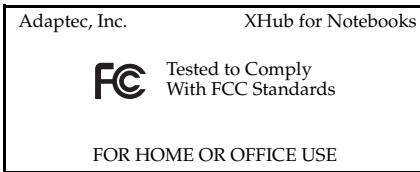
Federal Communications Commission Radio Frequency Interference Statement

WARNING: Changes or modifications to this unit not expressly approved by the party responsible for compliance could void the user's authority to operate the equipment.

This equipment has been tested and found to comply with the limits for a Class B digital device, pursuant to Part 15 of the FCC rules. These limits are designed to provide reasonable protection against harmful interference in a residential installation. This equipment generates, uses, and can radiate radio frequency energy, and if not installed and used in accordance with the instruction manual, may cause harmful interference to radio communications. However, there is no guarantee that interference will not occur in a particular installation. However, if this equipment does cause interference to radio or television equipment reception, which can be determined by turning the equipment off and on, the user is encouraged to try to correct the interference by one or more of the following measures:

- Reorient or relocate the receiving antenna.
- Increase the separation between equipment and receiver.
- Connect the equipment to an outlet on a circuit different from that to which the receiver is connected.
- Consult the dealer or an experienced radio/television technician for help.
- Use a shielded and properly grounded I/O cable and power cable to ensure compliance of this unit to the specified limits of the rules.

This device complies with part 15 of the FCC rules. Operation is subject to the following two conditions: (1) this device may not cause harmful interference and (2) this device must accept any interference received, including interference that may cause undesired operation.



European Union Compliance Statement

This Information Technology Equipment has been tested and found to comply with EMC Directive 89/336/EEC, as amended by 92/31/EEC and 93/68/EEC, in accordance with:

- EN55022 (1998) Emissions
- EN55024 (1998) Immunity:
 - EN61000-4-2 (1998) Electrostatic discharge: ± 4 kV contact, ± 8 kV air
 - EN61000-4-3 (1998) Radiated immunity
 - EN61000-4-4 (1995) Electrical fast transients/burst: ± 1 kV AC, ± 0.5 kV I/O
 - EN61000-4-5 (1995) Surges ± 1 kV differential mode, ± 2 kV common mode
 - EN61000-4-6 (1996) Conducted immunity: 3 V
 - EN61000-4-11 (1994) Supply dips and variation: 30% and 100%

In addition, all equipment requiring U.L. listing has been found to comply with EMC Directive 73/23/EEC as amended by 93/68/EEC in accordance with EN60950 with amendments A1, A2, A3, A4, A11.



Australian/New Zealand Compliance Statement

This device has been tested and found to comply with the limits for a Class B digital device, pursuant to the Australian/New Zealand standard AS/NZS 3548 set out by the Spectrum Management Agency.



Canadian Compliance Statement

This Class B digital apparatus meets all requirements of the Canadian Interference-Causing Equipment Regulations.

Cet appareil numérique de la classe B respecte toutes les exigences du Règlement sur le matériel brouilleur du Canada.



Japanese Compliance (Voluntary Control Council Initiative)

This equipment complies to class B Information Technology equipment based on VCCI (Voluntary Control Council for Interface). This equipment is designed for home use but it may causes radio frequency interference problem if used too near to a television or radio. Please handle it correctly per this documentation.

In this Guide

Introduction	1
What's in the Package	2
System Requirements	2
This Is Your XHub	3
Plugging in Your XHub	4
Installing Drivers	5
Installing USBControl	8
Plugging in Your Devices	8
Understanding the LEDs	9
Daisy-Chaining XHubs	10
About USB	11
Maximizing XHub Performance	12
Technical Specifications	12

Introduction

Congratulations on your purchase of the Adaptec XHub for Notebooks. You can use your XHub to connect USB 1.1 and 2.0 devices to your Windows[®] or Macintosh[®] notebook or desktop computer.

This *User's Guide* shows you how to set up and use your Adaptec XHub for Notebooks.

What's in the Package

The Adaptec XHub for Notebooks kit includes:

- AUH-4100 USB 2.0 hub
- 5 V, 2.6A power adapter
- *XHub for Notebooks Quick Start Guide*
- XHub for Notebooks CD, which includes drivers and the Adaptec USBControl device manager utility

You'll also need one high-quality USB cable for each USB device you wish to connect to your XHub. Most USB devices are sold with a USB cable. (High quality USB cables are available for purchase on the Adaptec website, at www.adaptec.com/buy-cables.)

System Requirements

Windows Computers

To use the XHub for Notebooks, you need:

- PC-compatible computer with 266 MHz or faster processor, running Windows[®] 98SE, Windows[®] Me, Windows[®] 2000, or Windows[®] XP
- CD-ROM drive
- Available USB 2.0 port (see [Maximizing XHub Performance on page 12](#) for more information)

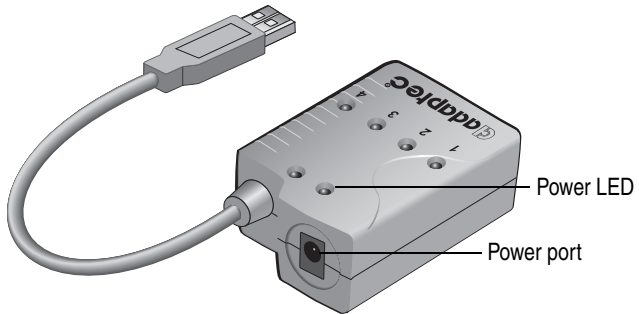
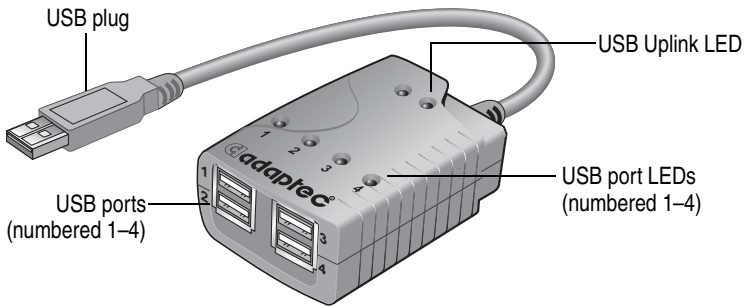
Macintosh Computers

To use the XHub for Notebooks, you need:

- Mac OS 9.04 or later
- CD-ROM drive
- Available USB port (see [Maximizing XHub Performance on page 12](#) for more information)

This Is Your XHub

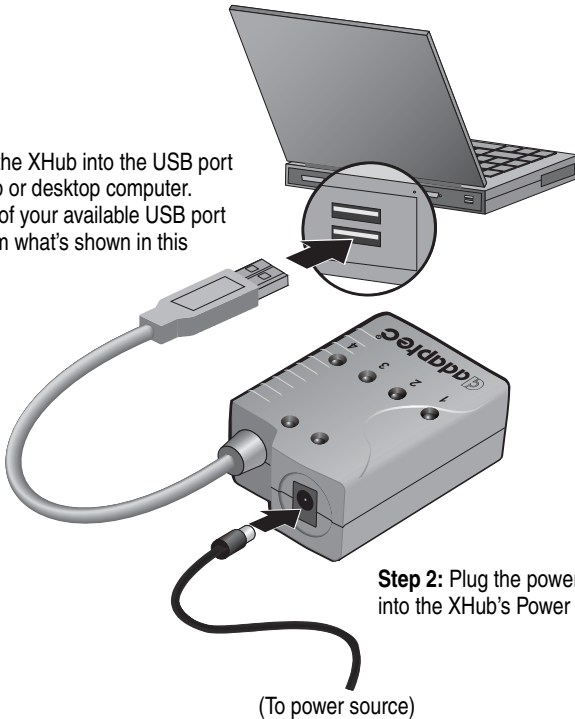
More information about your XHub is in [Technical Specifications on page 12](#).



Plugging in Your XHub

Follow the picture below to connect your XHub. Your XHub must be connected to a USB 2.0 port for it to operate at USB 2.0 speeds. XHubs connected to bus-powered devices can operate without a power adapter. (See [Technical Specifications](#) on page 12 for limitations.)

Step 1: Plug the XHub into the USB port on your laptop or desktop computer. (The location of your available USB port may differ from what's shown in this example.)



Installing Drivers

USB 2.0 driver software with hub support must be installed on your computer for the XHub for Notebooks to operate at USB 2.0 speeds. If you are using an Adaptec USB 2.0 controller, install the USB 2.0 drivers provided on the XHub for Notebooks CD.



Note: The drivers provided on the XHub for Notebooks CD will not work with non-Adaptec USB 2.0 controllers. Refer to your controller's manufacturer for driver information.

Follow the instructions for your Operating System (OS) to install the USB 2.0 drivers:

- For Windows 2000, Windows Me, or Windows 98SE, see below.
- For Windows XP, see [page 6](#).
- For Macintosh, see [page 7](#).



Note: Adaptec *strongly recommends* that you always use the most recent drivers to maximize your XHub's performance. Regularly check the Adaptec website at www.adaptec.com for the most up-to-date USB 2.0 drivers.

Windows 2000/Me/98SE

Turn on your computer and connect your AUH-4100 (see [Plugging in Your XHub on page 4](#) for instructions). Insert the XHub for Notebooks CD into your CD-ROM drive. Windows loads the driver automatically.

Double-checking Driver Installation

To ensure that the driver has installed properly:

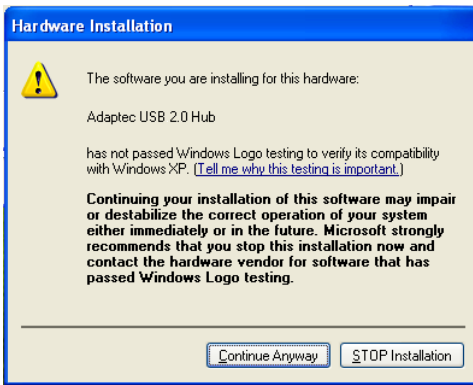
- 1 On your desktop, double-click **My Computer**.
- 2 Double-click **Control Panel**.
- 3 Double-click **System**. The System Properties window opens.
- 4 Open **Device Manager**.

Adaptec USB 2.0 Hub should appear under Universal Serial Bus controllers.

Windows XP

To install the drivers for Windows XP:

- 1 Turn on your computer and connect your AUH-4100 (see [Plugging in Your XHub on page 4](#) for instructions).
- 2 Insert the XHub for Notebooks CD into your CD-ROM drive. The Found New Hardware wizard opens.
- 3 Select **Install the software automatically...**, then click **Next**.
- 4 Click **Continue Anyway**.



- 5 Windows installs the driver. Click **Finish** to complete the installation.
- 6 Follow the steps in [Double-checking Driver Installation on page 5](#) to ensure that the driver was installed properly.

Macintosh Operating Systems

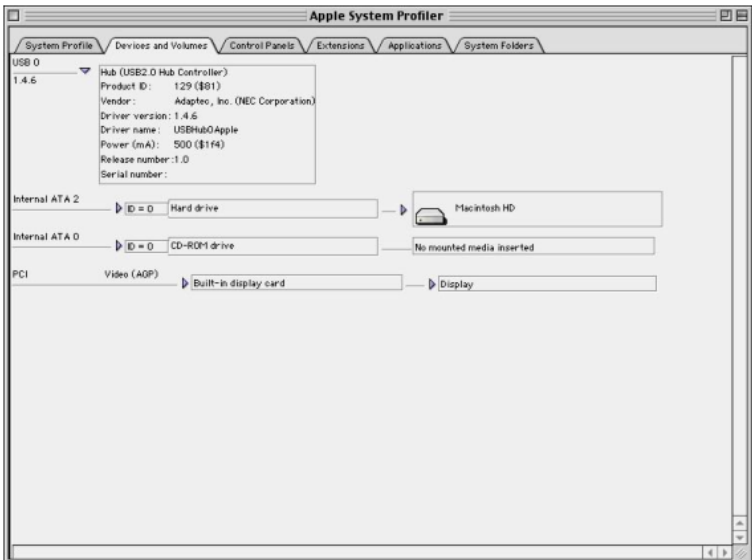
Because there are currently no USB 2.0 drivers for the Macintosh OS, you don't need a special driver to use the XHub for Notebooks with your Macintosh computer. (Your XHub for Notebooks will operate at USB 1.1 speeds.)



Note: The drivers included on your XHub for Notebooks CD will not work on your Macintosh computer.

To verify that the XHub for Notebooks is recognized by your system:

- 1 Turn on your computer and connect your AUH-4100 (see [Plugging in Your XHub on page 4](#) for instructions).
- 2 Open the Apple System Profiler and check that USB2.0 Hub Controller appears in Devices and Volumes under USB, as shown in the example below.



Installing USBControl

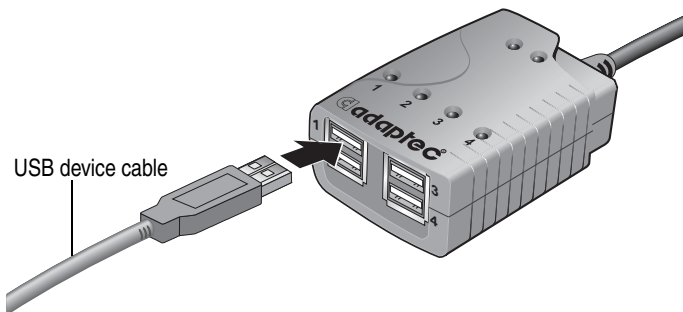
USBControl is a software utility that helps you easily manage your USB peripherals. Using USBControl, you can find information on device performance and status, and get detailed device information and troubleshooting help.


To install USBControl, insert the XHub for Notebooks CD into your CD-ROM and follow the on-screen instructions.

Note: USBControl runs with Adaptec USB 2.0 controllers, and on Windows OSs only.

Plugging in Your Devices

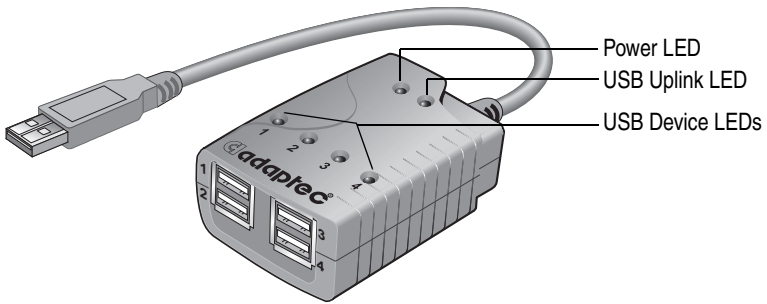
Follow the picture below to connect your USB 1.1 and 2.0 devices to your XHub for Notebooks. You can plug devices into any of the four USB ports.



 **Note:** USB 1.1 devices won't operate at USB 2.0 speeds, even if they're connected to USB 2.0 hubs or controllers. Your XHub must be connected to a USB 2.0 port for it and your USB 2.0 devices to operate at USB 2.0 speeds. (See [USB 1.1 vs USB 2.0 on page 11](#) for more information, and [Macintosh Operating Systems on page 7](#) for special limitations for Macintosh users.)

Understanding the LEDs

Your XHub for Notebooks has 6 colored LEDs to help you monitor the status of your XHub and USB devices. Refer to the figure below for the location of each LED.



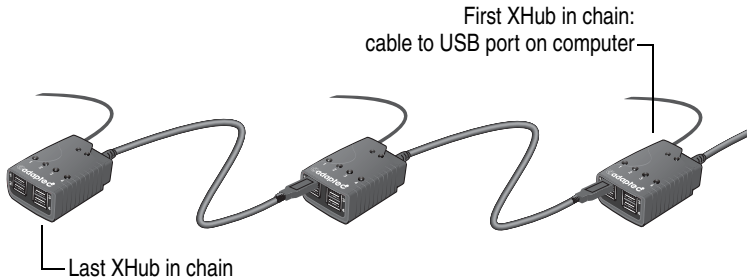
- The red Power LED indicates that the XHub is connected to a power source and that the power is on.
- The green USB Uplink LED indicates that the XHub is properly connected to a USB port on your computer, and that a USB 2.0 driver (version 3.0 or later) is installed. (See [Installing Drivers on page 5](#) for more information.)
- The four USB Device LEDs (numbered 1 through 4) indicate the status of the four USB ports on your XHub (numbered 1 through 4). When a Device LED is illuminated, a USB device is connected to the corresponding USB port.

Daisy-Chaining XHubs

If you want to add more USB 2.0 ports to your system, Adaptec XHubs can be daisy-chained (linked in series). You can connect *up to five* XHub for Notebooks hubs. (This is a USB limitation.)

To daisy-chain XHubs:

- 1 Connect a power adapter to each XHub. (See [Plugging in Your XHub on page 4](#).)
- 2 Plug the first XHub's USB cable into the USB port on your computer.
- 3 Plug the next XHub's USB cable into a USB port on the first XHub. You can use any available USB port.



- 4 Repeat until all your XHubs are daisy-chained together.

About USB

USB stands for Universal Serial Bus. It is the interface between your computer and the USB devices you plug into it. Your computer communicates with USB devices through the USB interface.

Some USB features are particularly important to desktop computer users:

- USB is one-size-fits-all—any USB device can be plugged into any USB port using the appropriate USB cable.
- USB devices feature plug-and-play installation—you don't have to open your computer or add special hardware to install a new USB device. Once you plug your USB device into your computer (or hub) and turn it on, you can start using it right away.
- You can hot-swap USB devices. You can easily unplug your digital camera to take away with you, or plug in your joystick during your lunch break.
- You can have many USB devices connected to your computer at once. Most newer computers come with 2 USB ports. USB hubs can provide additional ports.

USB 1.1 vs USB 2.0

USB 2.0 transfers data at 480 Megabits per second. USB 1.1 transfers data at 12 Megabits per second—that makes USB 2.0 up to 40 times faster than USB 1.1.

USB 1.1 devices cannot operate at USB 2.0 speeds even when connected to a USB 2.0 hub or adapter.

Maximizing XHub Performance

For your XHub for Notebooks to operate at optimum speed, it must be connected to a USB 2.0 port, and USB 2.0 driver software with hub support must be installed on your computer.



Note: *Macintosh users*—There are currently no USB 2.0 drivers for the Macintosh OS, and USB 2.0 PCI cards will not work on Macintosh systems. Your XHub for Notebooks will operate at USB 1.1 speeds.

If your computer does not have a built-in USB 2.0 port, we recommend connecting the XHub for Notebooks to an Adaptec USB 2.0 card for the highest-quality USB 2.0 connection. (For information on USB 2.0 adapters, go to the Adaptec website at www.adaptec.com.)

USB 2.0 drivers with hub support can be found on the XHub for Notebooks CD included in your kit. See [Installing Drivers on page 5](#) for more information.

Technical Specifications

USB Compliant Version	USB 2.0, USB Hi-Speed Certified
Number of USB Ports	4
Operating Temperature	0 °C – 40 °C
Power Source	Self-powered
Power Adapter Input	AC 100 V – 240 V, 50 Hz/60 Hz
Power Adapter Output	DC 5 V/2.6 A



Note: The XHub for Notebooks can operate without a power adapter if it is connected to a bus-powered USB device, such as a mouse, keyboard, or zip drive. However, if the total power consumption of the USB devices connected to the XHub exceeds 490 mA, a power adapter must be used. Use Adaptec USBControl to determine the power consumption of your devices. Refer to USBControl online help for more information.



Adaptec, Inc.
691 South Milpitas Boulevard
Milpitas, CA 95035 USA

© 2002 Adaptec, Inc.
All rights reserved. Adaptec and the Adaptec logo
are trademarks of Adaptec, Inc. which may be
registered in some jurisdictions.

Part Number: 513302-06, Ver. AA, LB 07/02

Free Manuals Download Website

<http://myh66.com>

<http://usermanuals.us>

<http://www.somanuals.com>

<http://www.4manuals.cc>

<http://www.manual-lib.com>

<http://www.404manual.com>

<http://www.luxmanual.com>

<http://aubethermostatmanual.com>

Golf course search by state

<http://golfingnear.com>

Email search by domain

<http://emailbydomain.com>

Auto manuals search

<http://auto.somanuals.com>

TV manuals search

<http://tv.somanuals.com>