

MacAllister Power Tools,
1 Hampshire Corporate Park, Chandlers Ford,
Eastleigh, Hants S053 3YX, U.K.
Technical Helpline 0845 300 2577

**MAC
ALLISTER**

SAFETY AND OPERATING MANUAL

1700W ROTARY COLLECT MOWER

MAC1700RMA

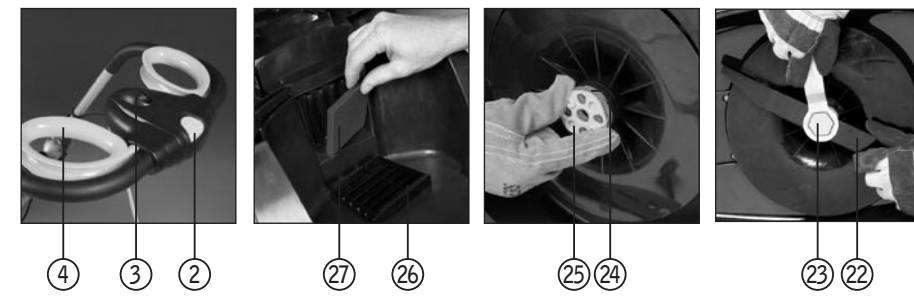


Caution: Carefully read this entire Instruction Manual before using this product

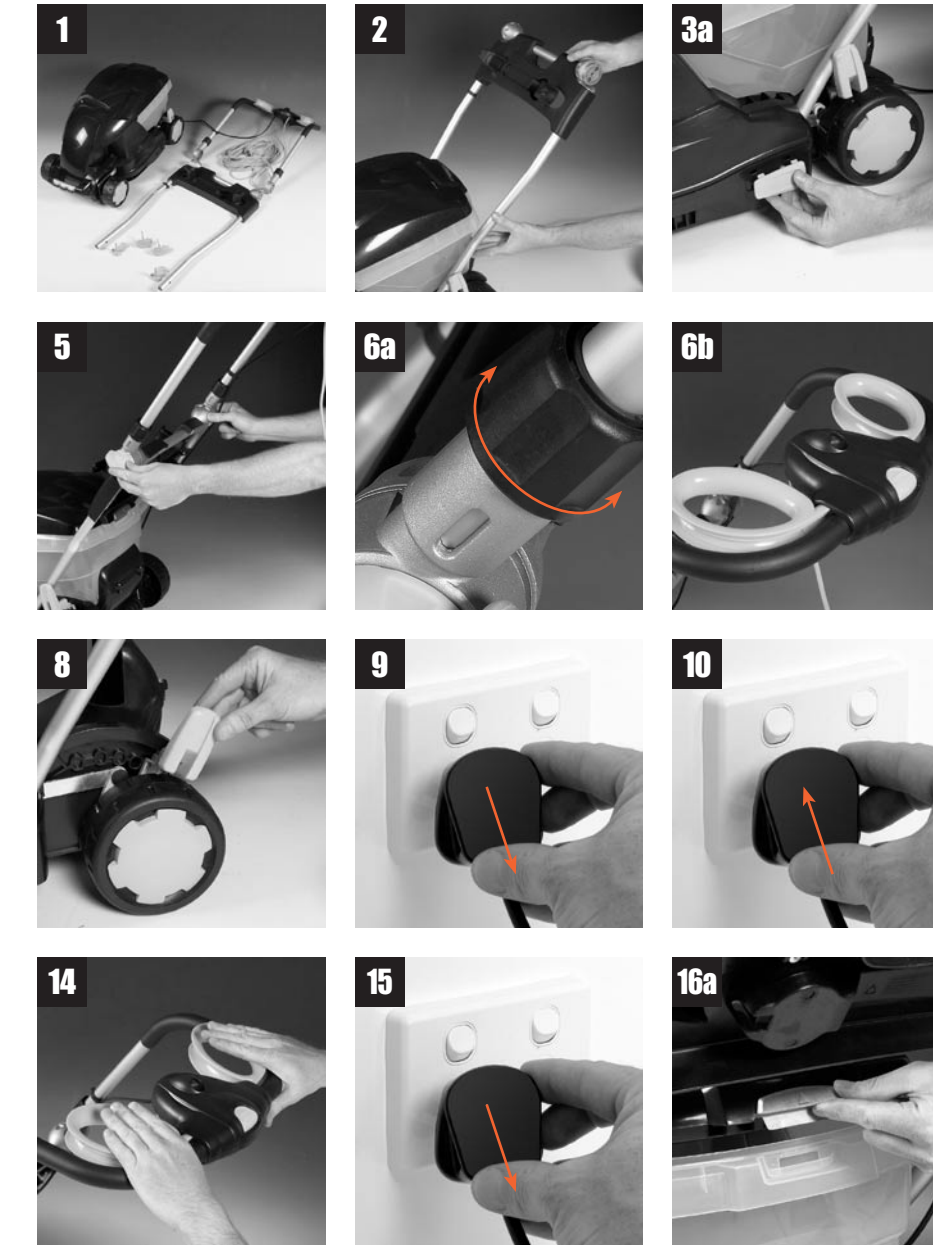
Thank you for purchasing a MacAllister product. We are confident that this product will meet and exceed your expectations of quality and reliability. Please take the time to carefully read this entire instruction manual before using your new product, and take note of the basic safety precautions contained herein.

MacAllister Power Tools,
1 Hampshire Corporate Park, Chandlers Ford,
Eastleigh, Hants S053 3YX, U.K.
Technical Helpline 0845 300 2577

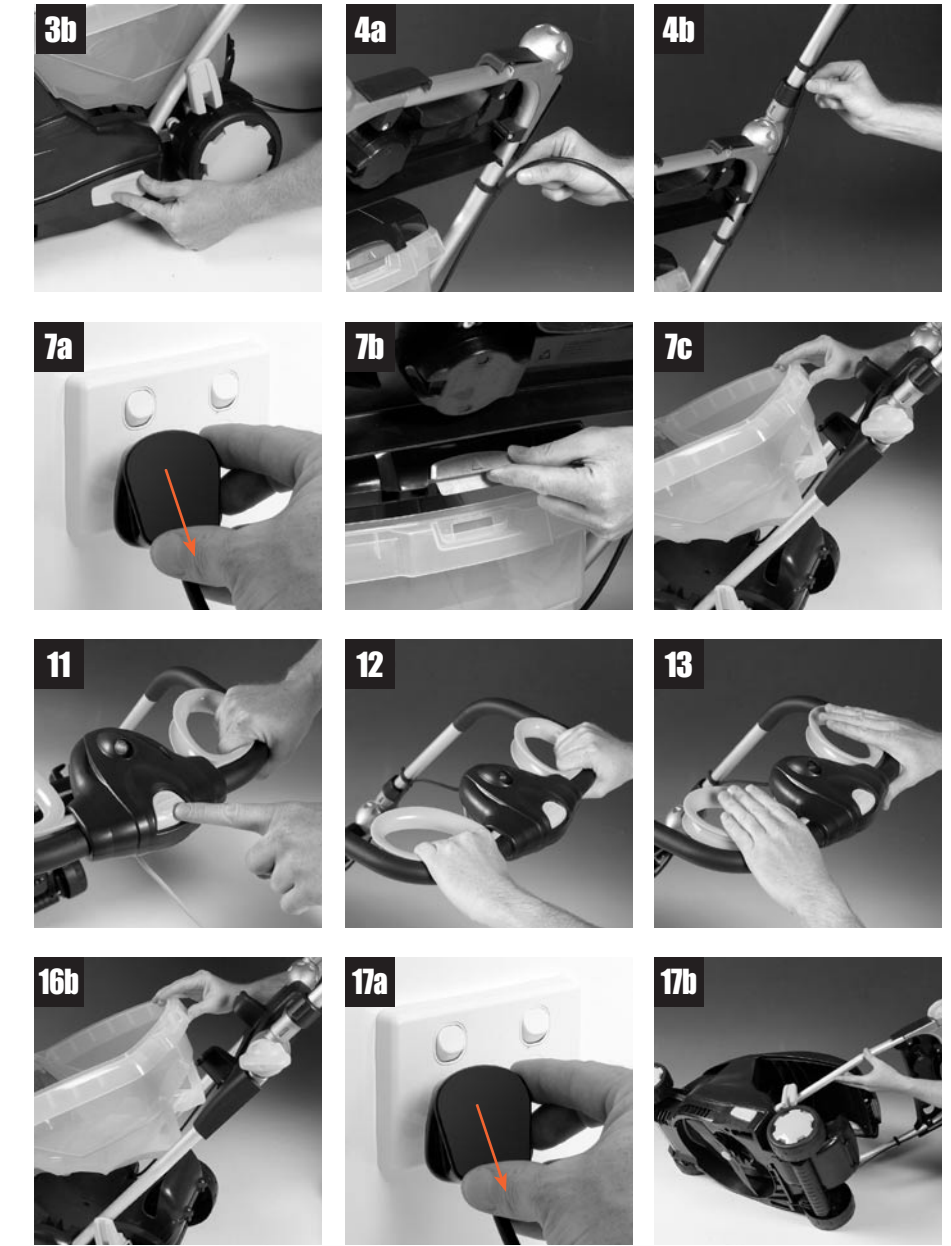
PMS Black U	Code: MAC1700RMA(B&Q)		
PMS Warm Red U	Date: 051228	Edition: 9	Op: DTR



A



B



C

Contents

I -	Parts list	A/1
II -	Technical data	1
III -	Safety instructions	2
IV -	Getting started	5
V -	Operation	6
VI -	Maintenance and repair	7
VII -	Guarantee	9
VIII -	EC Declaration of conformity	10

I - Parts list

1. Upper handle
2. Power button
3. Power on indicator
4. Motor on/off grip (x 2)
5. Power cable
6. Motor cable
7. Handle joint (x 2)
8. Handle twist lock (x 2)
9. Wing knob (x 2)
10. Power cable tidy
11. Blade spanner
12. Motor cable saddle clip (x 2)
13. Hinged cover
14. Cover latch
15. Mower body
16. Height adjustment lever
17. Lower handle
18. Lower handle fixing clip (x 2)
19. Grass box
20. Wheel (x 4)
21. Front handle
22. Blade
23. Blade bolt
24. Blade height spacer (blue)
25. Blade height spacer (yellow)
26. Filter cover
27. Filter

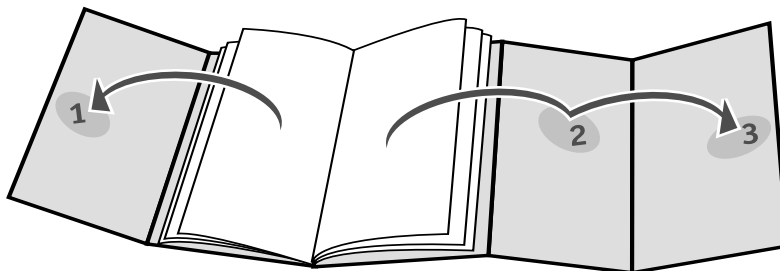
II - Technical data

Voltage:.....230–240V ~ 50 Hz
Motor power:..... 1700W
No-load speed:4500min⁻¹
Cutting width (swathe):.....36cm (14")
Cutting heights:
 With blue spacer in place.....
 5 (16mm, 25mm, 35mm, 45mm and 60mm)
 With blue spacer removed.....
 5 (22mm, 31mm, 41mm, 51mm and 66mm)
Grass box capacity:34 litres
Approximate weight: 16 kg

NOISE AND VIBRATION DATA

A weighted sound pressure level:..... 83 dB(A)
A weighted sound power level:95.8 dB(A)
Declared guaranteed sound power level:
.....96 dB(A)
Typical weighted vibration:..... 4.76m/s²

The sound intensity level for the operator may exceed 85dB(A) and sound protection measures are necessary



III - Safety instructions

GENERAL SAFETY INSTRUCTIONS

WARNING. Read all instructions. Failure to follow all instructions listed below may result in electric shock, fire and/or serious personal injury. The term "power tool" in all of the warnings listed below refers to your mains-operated (corded) power tool or battery-operated (cordless) power tool.

SAVE THESE INSTRUCTIONS

1) WORK AREA

- a) **Keep work area clean and well lit.** Cluttered and dark areas invite accidents.
- b) **Do not operate power tools in explosive atmospheres, such as in the presence of flammable liquids, gases, or dust.** Power tools create sparks which may ignite the dust or fumes.
- c) **Keep children and bystanders away while operating a power tool.** Distractions can cause you to lose control.

2) ELECTRICAL SAFETY

- a) **Power tool plugs must match the outlet. Never modify the plug in any way. Do not use any adapter plugs with earthed (grounded) power tools.** Unmodified plugs and matching outlets will reduce risk of electric shock.
- b) **Avoid body contact with earthed or grounded surfaces such as pipes, radiators, ranges and refrigerators.** There is an increased risk of electric shock if your body is earthed or grounded.
- c) **Do not expose power tools to rain or wet conditions.** Water entering a power tool will increase the risk of electric shock.
- d) **Do not abuse the cord. Never use the cord for carrying, pulling or unplugging the power tool. Keep cord away from heat, oil, sharp edges or moving parts.** Damaged or entangled cords increase the risk of electric shock.
- e) **When operating a power tool outdoors, use an extension cord suitable for outdoor use.** Use of a cord suitable for outdoor use reduces the risk of electric shock.

3) PERSONAL SAFETY

- a) **Stay alert, watch what you are doing and use common sense when operating a power tool. Do not use a power tool while you are tired or under the influence of drugs, alcohol, or medication.** A moment of inattention while operating power tools may result in serious personal injury.
- b) **Use safety equipment. Always wear eye protection.** Safety equipment such as a dust mask, non-skid safety shoes, hard hat, or hearing protection used for appropriate conditions will reduce personal injuries.
- c) **Avoid accidental starting. Ensure the switch is in the off-position before plugging in.** Carrying power tools with your finger on the switch or plugging in power tools that have the switch on invites accidents.
- d) **Remove any adjusting key or wrench before turning the tool on.** A wrench or a key that is left attached to a rotating part of the power tool may result in personal injury.

- e) **Do not overreach. Keep proper footing and balance at all times.** This enables better control of the power tool in unexpected situations.
- f) **Dress properly. Do not wear loose clothing or jewellery. Keep your hair, clothing, and gloves away from moving parts.** Loose clothes, jewellery or long hair can be caught in moving parts.
- g) **If devices are provided for the connection of dust extraction and collection facilities, ensure that these are connected and properly used.** Use of these devices can reduce dust-related hazards.

4) POWER TOOL USE AND CARE

- a) **Do not force the power tool. Use the correct power tool for your application.** The correct power tool will do the job better and safer at the rate for which it was designed.
- b) **Do not use the power tool if the switch does not turn it on and off.** Any power tool that cannot be controlled with the switch is dangerous and must be repaired.
- c) **Disconnect the plug from the power source before making any adjustments, changing accessories, or storing power tools.** Such preventive safety measures reduce the risk of starting the power tool accidentally.
- d) **Store idle power tools out of the reach of children and do not allow persons unfamiliar with the power tool or these instructions to operate the power tool.** Power tools are dangerous in the hands of untrained users.
- e) **Maintain power tools. Check for misalignment or binding of moving parts, breakage of parts, and any other condition that may affect the power tools operation. If damaged, have the power tool repaired before use.** Many accidents are caused by poorly maintained power tools.
- f) **Keep cutting tools sharp and clean.** Properly maintained cutting tools with sharp cutting edges are less likely to bind and are easier to control.
- g) **Use the power tool, accessories and tool bits etc., in accordance with these instructions and in the manner intended for the particular type of power tool, taking into account the working conditions and the work to be performed.** Use of the power tool for operations different from intended could result in a hazardous situation.

5) SERVICE

- a) **Have your power tool serviced by a qualified repair personnel using only identical replacement parts.** This will ensure that the safety of the power tool is maintained.

ADDITIONAL SAFETY RULES FOR ROTARY MOWERS

- Only use this Lawn Mower when a Residual Current Device (RCD) with a tripping current of not more than 30mA is in the circuit.
- If an extension cord is used make sure it is for outdoor use and marked as such. The recommended size of extension cord is not lighter than 1.5mm² and a maximum of 10 metres in length.
- Completely uncoil your extension cable before use to prevent overheating and loss of mower efficiency. When tidying away the cable, wind it carefully to avoid kinking.

WARNING. After switching off the machine, the cutting blade continues to rotate for a few more seconds.

- Frequently inspect the condition of the cutting blades. Damaged blades must be replaced immediately. Blunt blades should be sharpened. Follow all the required precautions when replacing the blades.
 - Before use check the supply and extension cord for signs of damage or ageing. If the cord becomes damaged during use, disconnect the cord from the supply immediately. **DO NOT TOUCH THE CORD BEFORE DISCONNECTING THE SUPPLY.**
 - Do not use the appliance if the cord is damaged or worn.
 - Read the instructions carefully. Be familiar with the controls and proper use of the equipment.
 - Keep extension cord away from cutting blades.
 - Wear eye and ear protection. Wear dust protection if the mowing action causes the raising of dust or particles.
 - Never allow children, infirm people or people unfamiliar with these instructions to use the rotary collect mower.
 - Avoid using the mower, while people, especially children and the infirm, or pets are nearby.
 - Use the mower only in daylight or good artificial light.
 - Do not operate the mower unless the grass box is in place.
 - Never operate the mower with a damaged base.
 - Never operate the appliance with defective guards or shields, or without safety devices, for example deflectors and/or grass catcher, in place.
 - When starting up and when the machine is in operation, keep the cutting section away from all parts of the body, especially the hands and feet.
 - Do not start the machine when it is not in the operating position.
 - Thoroughly inspect the mower for loose or damaged parts before each use. Do not use the unit until adjustments or repairs are made.
 - Use only the manufacturer's recommended replacement parts and accessories.
 - Always disconnect the mower from the mains when leaving it unattended.
 - Switch the motor off and pull out the plug when the machine is not being used, being cleaned, being moved from one place to another or when the blades are being changed or adjusted.
 - If there is an interruption to the power supply or the extension cable is damaged, switch off the machine immediately and remove the plug from the power point.
- Inspect and maintain the mower regularly. Have the mower repaired only by an authorised repairer.
 - If power cord is damaged, only have it repaired or replaced by an authorised service centre.
 - Check that all grass cuttings and dirt have been removed from the ventilation vents.
 - When not in use, store the mower out of the reach of children and infirm people.

WARNING. In order to reduce the risk, disconnect the plug from the supply power, only use recommended accessories as required, otherwise personal injury may result.

- Do not use the machine to cut grass which is not on the ground. For example, do not cut grass which is on rocks.
- Do not switch on the machine in enclosed or poorly ventilated spaces or in the presence of inflammable and/or explosive substances such as liquids, gasses and powders.
- Always stop the mower and switch off at the mains when cutting is delayed, emptying the grass box or when walking from one cutting location to another.
- Do not cross roads or gravel paths with the machine still running.
- Do not move the machine by pulling on the electrical cable. Always use the handgrip.
- Keep a balanced and stable stance while using the machine.
- Ensure that the area being cut is free from strings, stones and debris. Remove any objects that could be thrown during cutting or could wind around the cutting mechanism.
- If you hit or become entangled with a foreign object, stop the motor and disconnect from the mains immediately to check for damage. Repair any damage before further operation is attempted. Do not operate the mower with loose or damaged parts.
- Do not cut against hard objects. This could cause injury to the operator and damage to the machine.
- Keep your hands, face and feet away from all moving parts.
- If possible, avoid cutting wet grass.
- Exercise proper caution when mowing on sloping ground. Watch your footing and wear non-slip footwear. Mow along the slope not up and down it. Do not mow on steep slopes. Be especially cautious when changing direction on slopes – stand above the mower to avoid risk of injury.
- Never operate the mower barefoot or when wearing open sandals or canvas shoes.
- Do not mow by pulling the machine towards you.
- When mowing, keep the cable away from the mower. Your direction of work should be away from the power point. Mow in straight lines, not in circles.
- Always keep hands and feet away from rotating parts.
- When the machine is not in use, store it in a dry, and high or locked-up place, out of reach of children.
- Check the grass catcher frequently for wear or deterioration.
- After use, disconnect the machine from the power supply and check for damage. If you have the slightest doubts, check with an authorised service centre.
- Only use the machine according to the instructions given in this manual.

- Check regularly that the nuts, bolts, screws and other fittings are tight and secure.
- Keep the mower free of grass, leaves and other debris build-up.
- Do not tilt the appliance when switching on the motor, except if the appliance has to be tilted for starting. In this case, do not tilt it more than is absolutely necessary and lift only the part which is away from the operator. Always ensure that both hands are in the operating position before returning the appliance to the ground.
- Do not try to repair the machine or access internal parts. Use authorised service centres only.
- Do not get distracted and always concentrate on what you are doing. Use common sense. Never operate the machine when you are tired, sick or under the influence of alcohol or other drugs.
- Disconnect the unit from the power supply when not in use, before servicing and when changing the blades.
- Keep these instructions. Refer to them frequently and use them to instruct other users. If you loan someone this unit, also loan them these instructions.
- The operator or user is responsible for accidents or hazards occurring to other people or their property.

Failure to follow operating instructions and safety precautions in this instruction manual can result in serious injury. Read the manual before starting or operating this unit.

Wear eye protection
Wear hearing protection
Wear respiratory protection

Symbols

The rating plate on your tool may show symbols. These represent important information about the product or instructions on its use.



Wear hearing protection.
 Wear eye protection.
 Wear respiratory protection.



Double insulated for additional protection.



Conforms to relevant safety standards.



Waste electrical products should not be disposed of with household waste. Please recycle where facilities exist. Check with your Local Authority or retailer for recycling advice.



Read the instruction manual.



Warning.



Do not run the mower over objects. They can be thrown and cause severe injury.



Keep bystanders, especially children and pets at a distance of greater than 5m.



Switch off and remove the plug before adjusting, cleaning or if the cord is damaged.



Avoid injury, do not place hands or feet near the rotating blade.



Blade continues to rotate after the mower is switched off. Wait until all parts are stationary before touching them.



Do not use in the rain or leave the mower outdoors whilst it is raining.

IV - Getting started

1

UNPACKING

Due to modern mass production techniques, it is unlikely that your power tool is faulty or that a part is missing. If you find anything wrong, do not operate the tool until the parts have been replaced or the fault has been rectified. Failure to do so could result in serious personal injury.

The mower is supplied partially disassembled.

The parts in the carton are:

- Mower body (with blade fitted)
- Upper handle (including switchbox, motor on/off grips, handle joints with twist locks, motor cable saddle clip and 15m power cable)
- Lower handle (including cable tidy, motor cable saddle clip and blade spanner)
- Grass box
- 2 wing knobs and 2 lower handle fixing clips

ASSEMBLY

CAUTION. Never carry out any assembly operations or adjustments with the power connected to the mower. Always ensure that the power button is in the off position and that the power plug is disconnected from the supply.

2

Ensure that the handle is in the correct orientation i.e. the cable tidy (10) must be on the uppermost side of the lower handle (17) as shown on the main photograph. Fit the two tubes of the lower handle (17) into the slots in the mower body (15).

3

Fix the ends of the lower handle in position with the two lower handle fixing clips (18).

4

Using the two saddle clips (12), secure the black-coloured motor cable (6) to the upper handle (1) and lower handle (17).

5

Fit the handle joints (7) of the upper handle (1) over the die-cast ends of the lower handle (17) and secure them together with the wing knobs (9).

NOTE. There are two spacers under the blade, one coloured blue (24) and one coloured yellow (25).

The blue spacer can be removed to increase the incremental cutting heights by an extra 6mm at all 5 settings of the height adjustment lever (16). The mower must not be operated without the yellow spacer (25) in position under the blade. Instructions on how to remove the blue spacer are given in the section on changing the mower blade (Section VI).

CAUTION. Keep the two arms of the upper handle (1) parallel and insert them into the handle joints, both at the same time. If you insert one arm and then the other, you may damage the joints. When removing the handle, keep the arms parallel and remove both arms at the same time.

6

Ensure that each arm of the upper handle (1) is properly seated in the handle joints (7) as follows:

- Loosen the two handle twist locks (8).
- Keeping the two arms of the upper handle parallel, make sure that the upper handle (1) is fully inserted into the handle joints (7).
- Retighten the two handle twist locks (8) turning them clockwise.

NOTE. Make sure that the switchbox is facing upwards and that the orange-coloured power cable (5) is not wrapped around the handle. It must trail freely behind the switchbox on the upper handle.

7

ADJUSTING THE CUTTING HEIGHT

CAUTION. Never carry out any assembly operations or adjustments with the power connected to the mower. Always ensure that the power button is in the off position and that the power plug is disconnected from the supply. Choose a level area with a firm surface, press the cover latch (14), lift the cover (13) and remove the grass box (19).

8

Pull the height adjustment lever (16) towards you then move it to the right to increase the cutting height or to the left to decrease the cutting height.

Release the lever to lock it in one of the five stop positions.

NOTE. There is a blue spacer (24) located under the blade. It can be removed to increase the incremental cutting heights

by an extra 6mm at all 5 settings of the height adjustment lever (16).

Instructions on how to remove this spacer are given in Step 19.

HEIGHT ADJUSTMENT WITH BLUE SPACER IN POSITION

Lever position	Cutting height
1	16mm
2	25mm
3	35mm
4	45mm
5	60mm

HEIGHT ADJUSTMENT WITH BLUE SPACER REMOVED

Lever position	Cutting height
1	22mm
2	31mm
3	41mm
4	51mm
5	66mm

Replace the grass box (19).

9

BEFORE STARTING

ATTENTION. Due to the power input of this product on start up, voltage drops may occur and this can influence other equipment (e.g. dimming lights). So for technical reasons we advise, if the mains-impedance is $Z_{max} < 0.444 \text{ Ohm}$, these disturbances are not expected. If you require further clarification, you may contact your local power supply authority.

Before use, check that the mower is in good working order.

Ensure the power button is in the off position and disconnect the cable plug from the mains supply.

Examine the general condition of the mower. Inspect the body underneath the cover, blade, switch, power cord and extension cord (if used).

Check for loose screws, misalignment, binding of moving parts, improper mounting, broken parts and any other condition that may affect its safe operation. If abnormal noise or vibration occurs during operation, turn the mower off

immediately and have the problem corrected.

Do not use a damaged tool and attach a label "DO NOT USE" to the tool.

Ensure that you are on a flat surface and have secure footing. Check that the upper handle (1) is in line with the lower handle (17) and that the wing knobs (9) are securely tightened.

WARNING. Do not operate the mower unless the grass box is in place.

V - Operation

10

SWITCHING ON AND OFF

IMPORTANT. Practise switching on and switching off the mower as detailed below before using it to cut grass for the first time.

Start the mower on a hard, level surface (such as a driveway) that is free of debris.

Connect the power cable (5) to the power point.

NOTE. The power on indicator (3) lights showing that power is connected.

11

Squeeze one of the motor on/off grips (4) towards the upper handle (1) and use the other hand to press the power button (2). The power button remains depressed as long as the pressure is maintained on the motor on/off grip (4).

12

Transfer the other hand to squeeze the second motor on/off grip (4).

As the motor picks up speed you are ready to begin mowing.

To stop the motor, release pressure on both motor on/off grips (4) until the power button (2) clicks off.

The motor is not started if pressure is re-applied to the motor on/off grips (4) alone. It is necessary to squeeze a motor on/off grip (4) and re-press the power button (2) to re-start the motor.

13

EMERGENCY STOP

- To stop the motor in an emergency, simply release the pressure on both motor on/off grips.

- Keep your hands on the upper handle in order to control the mower.

- Allow the motor to stop completely before releasing control of the handle.

14

MOWING

WARNING. Only use this mower when a Residual Current Device (RCD) with a tripping current of not more than 30mA is in the circuit.

NOTES:

- Cut grass when it is dry.
- Keep the mower blade sharp and balanced.
- Do not set the cutting height too low, especially at the beginning of the mowing season.
- Vary the cutting pattern with each mowing.
- Use the cable restraint to secure the power cable (5) in order to prevent any pulling forces on the cable from being transmitted to the switch box.
- Make sure that the work area is free of rocks, debris, string or cord and other foreign objects.
- Where possible, start the mower before approaching the grass to be cut.
- Cut the grass by moving in a straight line and proceed slowly.
- Start cutting nearest the mains power source and work away from it to make it easier to avoid the cable.
- At the edge of the lawn, take care to maintain the mower parallel with the ground to prevent "scalping" of the grass.
- Do not cut damp or wet grass.
- Do not overload the mower.

After finishing the cutting operation, release pressure on both motor on/off grips (4) and allow the motor to come to a complete standstill.

15

Remove the cable plug from the mains supply.

16

EMPTYING THE GRASS BOX

As the grass collection box (19) fills with grass, it is clearly visible through the translucent material of the box.

Ensure the power button (2) is in the off position

and disconnect the power cable plug from the power point.

Ensure that you are on a flat surface and have secure footing.

Press the cover latch (14) and lift the hinged cover (13).

Lift out the grass box (19), empty it, replace it and close the hinged cover (13).

VI - Maintenance and repair

17

CHANGING THE MOWER BLADE

CAUTION. Never carry out any assembly operations or adjustments with the power connected to the mower. Always ensure that the power button is in the off position and that the power plug is disconnected from the supply.

Periodically check the blade (22) for nicks and dull cutting edges and have it sharpened if needed.

NOTE. The blade should be sharpened and balanced by an authorised repair centre. If there are rounded or broken ends, thinned metal or other damage, replace the blade.

With the power button (2) in the off position and the power plug removed from the supply, take out the grass box (19) and turn the mower on its side.

18

Put on a pair of sturdy gloves to protect your hands. Block the rotation of the blade (22) and use the blade spanner (11) to unscrew the blade bolt (23) in an anti-clockwise direction (viewed from underneath).

19

Remove the blade bolt (23) and blade (22) taking care not to disturb any blade height spacers (24 and 25) that might be fitted.

NOTE. The blue spacer (24) can be removed to increase the incremental cutting heights by an extra 6mm at all 5 settings of the height adjustment lever (16).

The mower must not be operated without the yellow spacer (25) in position under the blade.

20

Check that the blade height spacers (24 and 25)

are properly located, add the replacement blade (22) and screw in the blade bolt (23), tightening it with the blade spanner (11).

Return the blade spanner (11) to its storage position in the cable tidy (10).

Press down on the blade spanner (11) to lock it in position under the retaining latch.

Return the mower to the upright position and replace the grass box (19).

Reconnect the power cable to the supply and run the mower for a few minutes to check that the blade is properly fitted and that there is no undue noise or vibration.

Use only the blade as recommended by the manufacturer.

21

CLEANING THE FILTER

To help maintain good airflow within the grass box and thus ensure optimum filling, regularly check and, if necessary, clean the filter (27).

Access the filter by using a flat blade screwdriver to prise off the filter cover (26).

22

Take out the filter, wash it in warm, soapy water, rinse it and allow it to dry.

23

Clean out the filter area and replace the filter and the filter cover (26).

NOTE. This filter is a consumable item and not a warranty item.

24

MAINTENANCE

Store the tool, instruction manual and accessories in a secure, dry place. You will then always be able to refer to the relevant information when required.

In order to take up less space when storing the mower, loosen both wing knobs (9) and fold the upper handle (1) over the lower handle (17).

When not in use, keep the cord wrapped around the cable tidy.

Keep the tool's air vents accessible when the cover (13) is raised, unclogged and clean at all times.

Remove dust and dirt regularly.

Clean inside the mower body and under the deck. Use a brush or damp rag.

At the end of the season, give the mower an overall cleaning and a thorough check, including the blade. Have the blade sharpened or replaced if necessary.

You can clean out the grass box with a hose or pressure cleaner provided that you first remove it from the mower. Replace the grass box when it is dry.

Do not let water come into contact with the motor.

Never use chemicals such as petrol or solvents to clean plastic parts.

Never disassemble the tool or carry out any repairs.

Always have the mower maintained or repaired by a competent person at an authorised service centre.

25

GENERAL INSPECTION

Regularly check that all fixing screws are tight. They may vibrate loose over time.

26

PLUG REPLACEMENT

If you need to replace the fitted plug then follow the instructions below.

IMPORTANT. The wires in the mains lead are coloured in accordance with the following code:

Blue – Neutral Brown – Live

As the colours of the wires in the mains lead of this appliance may not correspond with the coloured markings identifying the terminals in your plug, proceed as follows. The blue wire must be connected to the terminal which is marked with N or coloured black. The brown wire must be connected to the terminal which is marked with an L or coloured red.

WARNING. Never connect live or neutral wires to the earth terminal of the plug.

Only fit an approved 13 Amp BS1363/A plug and the correct rated fuse.

NOTE. If a moulded plug is fitted and has to be removed take great care in disposing of the plug and severed cable, it must be destroyed to prevent engaging into a socket.

VII - Guarantee

Thank you for investing in MacAllister.

These products have been made to demanding, high quality standards and are guaranteed for domestic use against manufacturing faults for a period of 36 months from the date of purchase.

To take advantage of this free extended warranty please register on the website. This guarantee does not affect your statutory rights. If your product fails due to a defect in material or workmanship during this period, please return it to your nearest B&Q store.

Normal wear and tear, including accessory wear, is not covered under guarantee. The product is guaranteed for 12 months if used for normal trade purposes. Any guarantee is invalid if the product has been overloaded or subject to neglect, improper use or an attempted repair other than by an authorised agent.

Heavy duty, daily professional or hire usage are not guaranteed. Due to continuous product improvement, we reserve the right to change the product specification without prior notice.

VIII - EC Declaration of conformity

DECLARATION OF CONFORMITY



1 Hampshire Corporate Park
Chandlers Ford, Hampshire, SO53 3YX, U.K.

We declare that the **ROTARY COLLECT MOWER MAC1700RMA** conforms with the following EEC Directives their supporting Statutory Instruments and relevant standards, where applicable as follows:

The Machinery Directive 98/37/EC

The Low Voltage Directive 73/23/EEC amended by 93/68/EEC

The EMC Directive 89/336 amended by 93/68/EEC

The Outdoor Noise Directive 2000/14/EC

EN 60335-1:1994+A1+A2+A11+A16 EN 60335-2-77: 2000 EN 50366: 2003	EN55014-1: 2000+A1 + A12 EN55014-2: 1997+A1 EN61000-3-2: 2000 EN61000-3-11:2000
--	--

The noise emission in the environment by equipment for use outdoors (ANNEX VI- Internal control of production with assessment of technical documentation and periodical checking) 2000/14/EC.

Measured sound power level: 95.8 dB(A)

Guaranteed sound power level: 96 dB(A)

Mr Kevin McGilvray
Director of Quality Assurance
B&Q plc

26th August 2005

Free Manuals Download Website

<http://myh66.com>

<http://usermanuals.us>

<http://www.somanuals.com>

<http://www.4manuals.cc>

<http://www.manual-lib.com>

<http://www.404manual.com>

<http://www.luxmanual.com>

<http://aubethermostatmanual.com>

Golf course search by state

<http://golfingnear.com>

Email search by domain

<http://emailbydomain.com>

Auto manuals search

<http://auto.somanuals.com>

TV manuals search

<http://tv.somanuals.com>