

Addonics TECHNOLOGIES

Zebra Blu Ray & DVD±R/RW Writer
with eSATA and USB interface

ZBW-10LS2EU

User's Guide

FCC Warning Statement

This equipment has been tested and found to comply with the limits for a class B digital device pursuant to Part 15 of the FCC rules. These limits are designed to provide reasonable protection against harmful interference in a residential installation. This equipment generates, uses and can radiate radio frequency energy. If not installed and used in accordance with the instructions, it may cause harmful interference to radio communications. However, there is no guarantee that interference will not occur in a particular installation. If the equipment does cause harmful interference to radio or television reception, which can be determined by turning the equipment on and off, the user is encouraged to try and correct the interference by one or more of the following suggestions.

Reorient or relocate the receiving antenna

Increase the distance between the equipment and the receiver

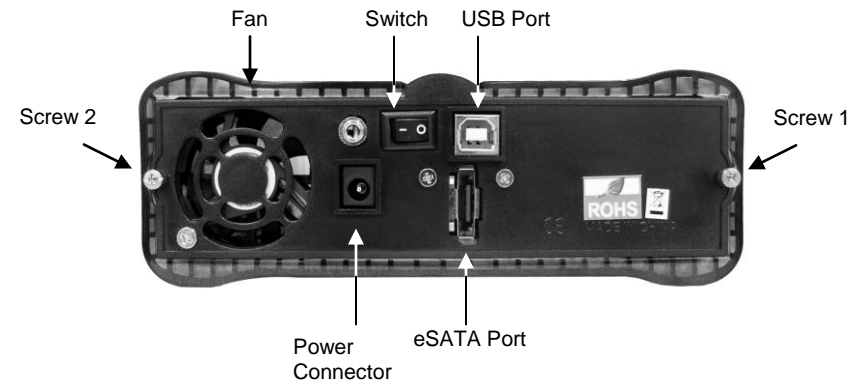
Connect the equipment to a different power outlet other than the one where receiver is connected

Consult a certified television or radio technician

Enclosure Overview



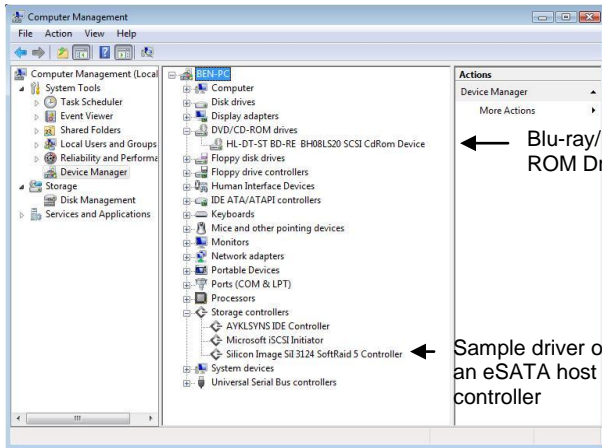
Rear View



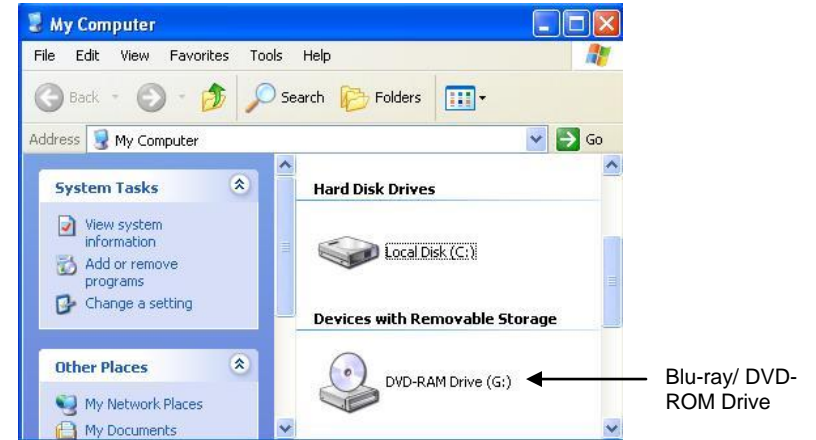
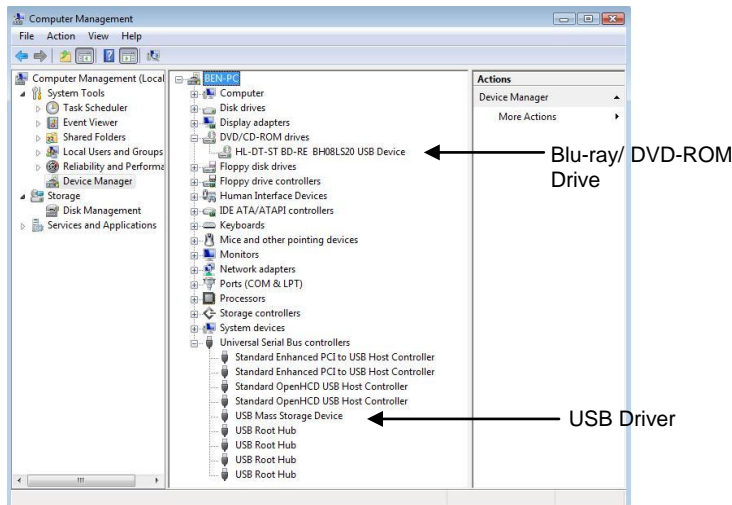
Hardware Installation

1. Connect the power adapter to the power connector located at the back of the enclosure.
2. Connect the data cable using
 - a. eSATA connection
Note: You should have configured the eSATA host controller on your system before you connect the writer. Once the eSATA host controller is configured, do the following steps below. Plug-in the eSATA cable to the eSATA port on the enclosure and attached the other end to your eSATA host controller.
 - b. Or USB2.0 connection
Attach the USB cable to the USB port on the enclosure and in your system.

- Power ON the enclosure using the switch on the back panel. You should see the Green Power LED on the front panel at the bottom right light up.
- Go to Device Manager to check if your system detects the Blu Ray writer via eSATA connection



via USB2.0 connection



Installing PowerDVD from CyberLink Hi-Def Suite CD

Place the CyberLink BD Drive Solution CD to the BD / DVD-ROM Drive.

- Click Install Now button.
- Select OK.
- Select Next.
- Select Yes.
- Select Next. (The CD key will automatically show up)
- Select Next.
- Select only "Cyberlink Power DVD" then click Next.
- Select Finish.

- The Blu-ray writer will also show up in My Computer.

To determine if your system is capable of playing Blu-ray Disk, install the CyberLink BD Advisor.

- Step 1. Click Install BD Advisor.
- Step 2. Run Advisor.
- Step 3. Click on Scan for Blu-ray Disk Support.

If you have a similar scan result you might not be able to play Blu-ray Disk.



System Requirement to play Blu-ray:

Systems not meeting these minimum requirements may not be able to play Blu-ray.

- CPU:** Intel Pentium D 3.2GHz or equivalent (Recommended: Core 2 Duo E6300 or higher)
- O/S:** Windows XP (Home / Professional / Media Center Edition) with SP2, Windows Vista (x86, x64)
- RAM:** 1 GB or more
- HDD:** 30 GB or more of available space

Graphic Card: Card with the following GPU (Graphic Processing Unit) recommended.

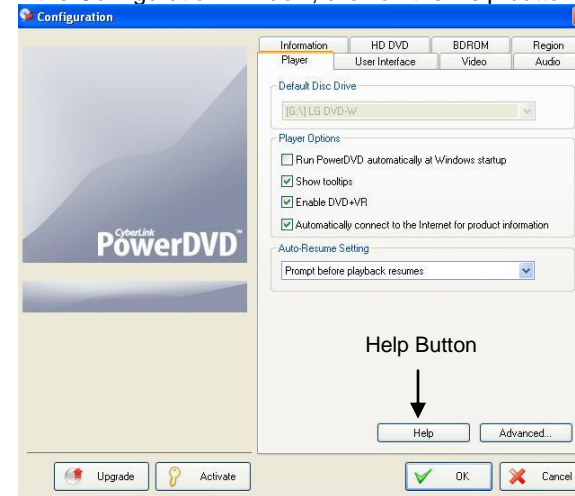
- nVIDIA: GeForce 7800 GTX 512/7900 GT /7900 GX2 /7900 GTX /7950 GX2 /8600 GS /8600 GT /8600 or higher with 256MB minimum memory (Download PureVideo HD driver)
- ATI: Radeon x1950/HD2300/HD2400/HD2600 series or higher with 256MB minimum memory. (Download ATI catalyst 6.6 or above)

Power DVD Main Menu

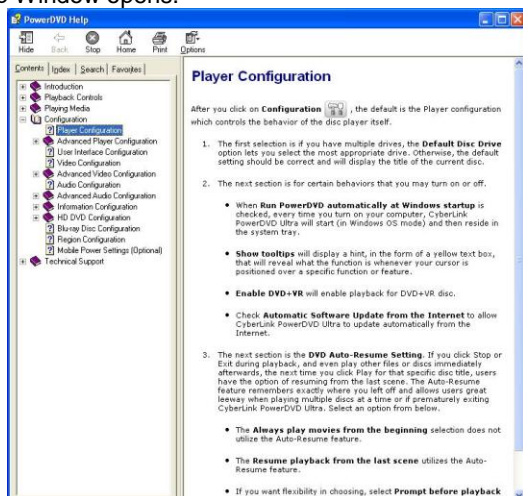


Configuration Icon

Click on the Configuration Icon to access the Configuration Window. In the Configuration Window, click on the Help button to access PowerDVD Help.



The Help Window opens.



LIMITED WARRANTY

Addonics guarantees that every product is free from physical defects in material and workmanship during the warranty period specified for each product when used within the limits set forth in the Specifications section in the user guide. Unauthorized tampering of the product or using it outside the scope of the product specifications will result in voiding the warranty. If the product proves defective during this warranty period, call Addonics Technical Support to obtain a Return Authorization number. **BE SURE TO HAVE YOUR PROOF OF PURCHASE ON HAND WHEN CALLING. RETURN REQUESTS CANNOT BE PROCESSED WITHOUT PROOF OF PURCHASE.** When returning a product, mark the Return Authorization number clearly on the outside of the package and include your original proof of purchase. Customers are responsible for paying the shipping and handling of the products to Addonics warranty service location.

IN NO EVENT SHALL ADDONICS' LIABILITY EXCEED THE PRICE PAID FOR THE PRODUCT FROM DIRECT, INDIRECT, SPECIAL, INCIDENTAL, OR CONSEQUENTIAL DAMAGES RESULTING FROM THE USE OF THE PRODUCT, ITS ACCOMPANYING SOFTWARE, OR ITS DOCUMENTATION. Addonics makes no warranty or representation, expressed, implied, or statutory, with respect to its products or the contents or use of the user guide and all accompanying software, and specifically disclaims its quality, performance, merchantability, or fitness for any particular purpose. Addonics reserves the right to revise or update its products, software, or documentation without obligation to notify any individual or entity.

Technical Support

If you need assistance to get your unit functioning properly, please call Addonics Technical Support. Our technical staff will be happy to assist you, but they will need your help to do so. Calling the technical support staff without all the proper information can be both time consuming and frustrating. Here are some tips to help you out:

- MODEL NUMBER – Please have this number on hand.
- SYSTEM INFORMATION – Type of computer, peripherals, etc.
- OPERATING SYSTEM – What version of Windows
- WHAT'S THE TROUBLE? – Give enough information about your problem so that we can recreate and diagnose it.

FREE Software Drivers for all Addonics Technologies Products are available 24 hours per day at the World Wide Web Site: www.addonics.com

Contact Information

Phone: 408-573-8580
Fax: 408-573-8588
Email: <http://www.addonics.com/sales/query/>
Internet: <http://www.addonics.com>

TECHNICAL SUPPORT

Phone: 408-453-6212
Hours: 8:30 am - 6:00 pm PST
Email: <http://www.addonics.com/support/query/>

Free Manuals Download Website

<http://myh66.com>

<http://usermanuals.us>

<http://www.somanuals.com>

<http://www.4manuals.cc>

<http://www.manual-lib.com>

<http://www.404manual.com>

<http://www.luxmanual.com>

<http://aubethermostatmanual.com>

Golf course search by state

<http://golfingnear.com>

Email search by domain

<http://emailbydomain.com>

Auto manuals search

<http://auto.somanuals.com>

TV manuals search

<http://tv.somanuals.com>