

MPK49

USB/MIDI PERFORMANCE KEYBOARD



FACTORY PRESET DOCUMENTATION

MPK49 FACTORY PRESET LISTINGS

PRESET #	PROGRAM	DESCRIPTION
1	LiveLite	This preset is designed to be used with the Ableton Live Lite software DAW, included with the MPK49.
2	Reason	This preset supports the Reason Remote protocol with supplied codec files. To use Reason with the Remote protocol, you will need to install the supplied Reason codec files. Each module in Reason will automatically map itself to the MPK49's controllers. This is extremely powerful as it allows you to use a single MPK49 preset to control all of the modules in Reason. See "Using the MPK49 with Propellerheads Reason" section for information on installing the Reason Remote codecs and mappings
3	Cubase	For use with Steinberg's Cubase DAW.
4	Sonar	For use with Cakewalk Sonar DAW.
5	ApplidAc	For use with Appliead Acoustics' String Studio and Ultra Analog.
6	Arturia	For use with Arturia software synth modules, such as Arp2600V, CS80V, Moog Modular V, Minimoog V, Prophet V, Jupiter 8V. See "Using the MPK49 with Arturia Synths" for information on preset mappings.
7	FxPanBFD	For use with Fxpansion's BFD.
8	FxPanGUR	For use with Fxpansion's Guru. See "Using the MPK49 with Fxpansion's Guru" for mapping information and use.
9	GMedia	For use with Gmedia synths, such as Minimonsta, ImpOSCar, and Oddity. See "Using the MPK49 with Gmedia Synths" for mapping information and use.
10	RobPapen	For use with Rob Papen synths, such as LinPlug's Albino 3, and ConcreteFX's Blue and Predator,. See "Using the MPK49 with Rob Papen Synths" for mapping information and use.
11	SpectATM	For use with Spectrasonics' Atmosphere.
12	SpectRMX	For use with Spectrasonics' Stylus RMX. See "Using the MPK49 with Spectrasonics' Stylus RMX" for mapping information and use.
13	SpectTRL	For use with Spectrasonics' Trilogy.
14	Virsyn	For use with Virsyn synths, such as Poseidon and Tera 3.
15	GMDrums	Standard General MIDI drum and controller mapping. Good for general drum use.
16	ArkaosVJ	For use with Arkaos VJ.
17 - 30	Generic	

The presets included are only intended to be a starting point for your use. All of these software programs allow incredible amounts of control and by using multiple MIDI channels, controllers, pad modes and program changes, you can easily create some incredible music.

Enjoy.

USING THE MPK49 WITH REASON



REASON

Reason is a software program that allows for vast control of its parameters. The problem with having a lot of controllable items is the limit of physical space and the cost of building hardware controllers that can accommodate hundreds or thousands of controllers. The people at Propellerheads have developed a way to remap a single control surface to each of the modules in Reason. This protocol is called Reason Remote.

We have included all the files necessary to enable Reason to find the MPK49 and map its controls to whatever module you have selected in the sequencer.

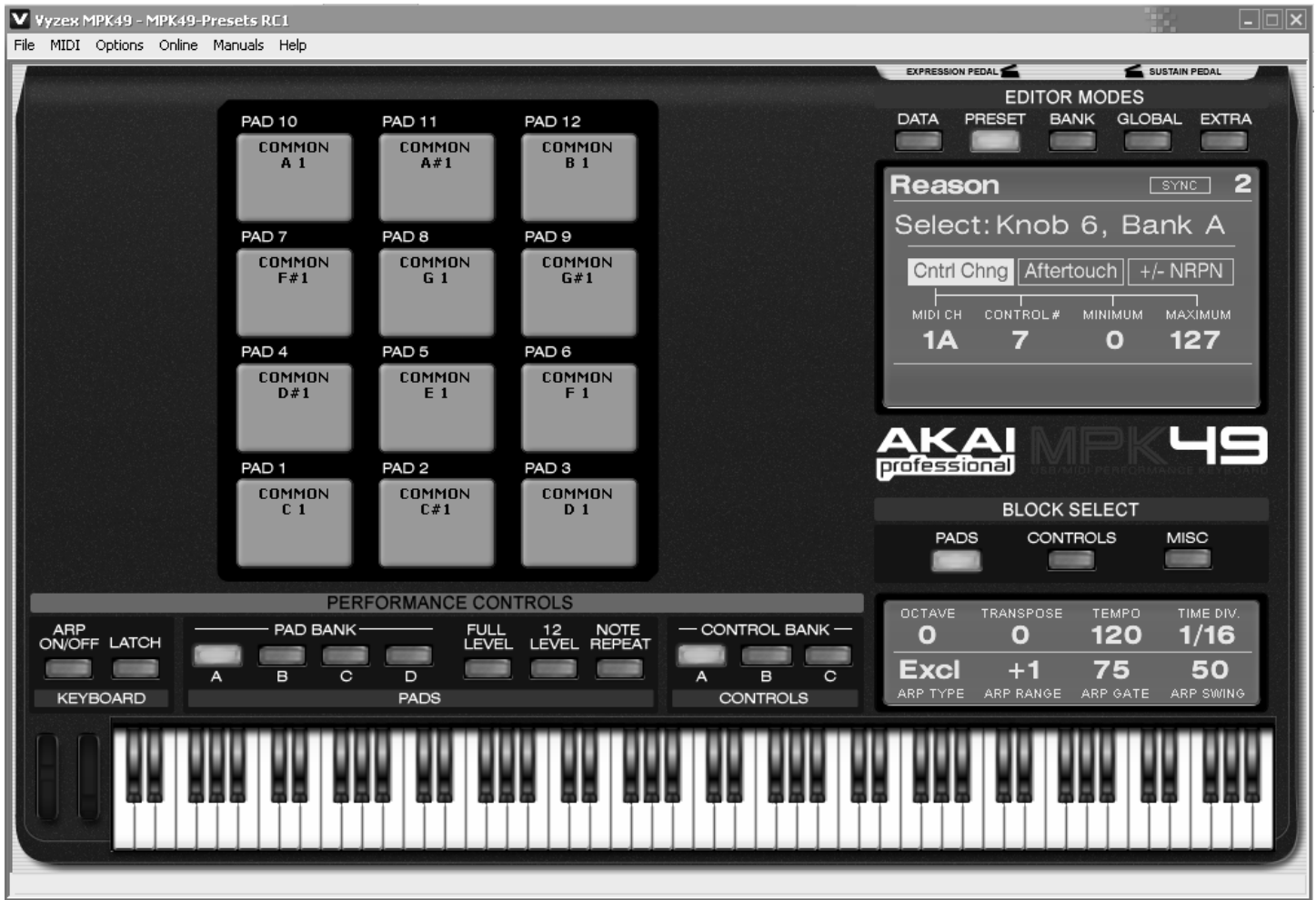
To begin using the MPK49 with Reason, you will need to make sure that you have version 3.0.5 or greater for the Mac or version 3.0.4 or later for the PC. Please note that the MPK49 is also compatible with Reason 4.

1. To install the Reason Remote codecs and remote maps, run the Reason Remote installer for your particular computer and it will auto-install the folders into the right locations.
2. After you have installed the Reason Remote codecs, select Preset number 2 – “Reason” – on your MPK49. Press the **[VALUE]** dial to load the preset.

! If you have edited MPK49’s presets and are unable to load the Reason preset, use the supplied Vyzex Editor to load the Factory Preset Bank and “PUT” or download the factory preset bank into the MPK49.

3. Start up Reason and the software will automatically find the MPK49 controller. Within Reason, click on **[Preferences]** and look under **[Control Surfaces and Keyboards]**. You should see the Akai MPK49 icon with a green check mark. If it is not checked, click the “Use with Reason” button.





The Vyzex Editor included on the CD is a great way to customize or restore presets to their factory condition!

The MPK49 preset for Reason makes use of pad banks A, B and C for playing notes. With these three pad banks you get a 3-octave range of pitch control.

Pad bank D is configured to be used as a control bank. This pad bank allows you to use the pads as switches for certain features.

The mapped parameters are shown in the graphic above.

EXAMPLE:

- When you are controlling Redrum or Matrix, pads D1-D4 correspond to the Bank A, B, C, D buttons in the pattern section. Pads D9-12 will allow you to select between patterns 1-4 and pads D5-8 allow you to select between patterns 5-8.
- In modules that allow you to select the “Previous” or “Next” preset, you can use switch S15 for “Previous Preset” and switch S14 for “Next Preset”.
- Switches S7 and S8 are always assigned to target the next or previous sequence track. This allows you to remotely select which module you are controlling.

The next few pages feature a full table of the mapping functions. Please refer to this table for information on how the MPK49 controls map to each individual module in Reason. You can always change how controllers are mapped by modifying the “MPK49.remotemap” file. This will allow you to customize how Reason and your MPK49 work.



REASON AKAI MPK49 PRESET MAPPINGS

::: GLOBAL CONTROLLERS :::

MPK49 CONTROL	REASON FUNCTION
Stop	Stop
Play	Play
Record	Record
Rewind	Rewind
Fast Forward	Fast Forward
Switch 7	Target Previous Track
Switch 8	Target Next Track
Switch 15	Select Previous Patch for Target Device
Switch 16	Select Next Patch for Target Device
Switch 23	Select Previous Keyboard Shortcut Variation
Switch 24	Select Next Keyboard Shortcut Variation

::: MASTER KEYBOARD :::

MPK49 CONTROL	REASON FUNCTION
Keyboard	Keyboard
Pitch Bend	Pitch Bend
Mod Wheel	Mod Wheel
Channel Pressure	Channel Pressure
Expression	Expression
Damper Pedal	Damper Pedal

BANK	RV 7000 REVERB	SCREAM 4 DISTORTION	MCLASS EQUALIZER	MCLASS IMAGER	M CLASS COMPRESSOR	M CLASS MAXIMIZER	RV-7 REVERB
Fader 1	A Decay	Damage Control	Low Shelf Gain	Low Width	Input Gain	Input Gain	Algorithm
Fader 2	A HF Damp	Damage Type	Parametric 1 Gain	X-Over Frequency	Threshold	Attack Speed	Size
Fader 3	A Hi EQ	Parameter 1	Parametric 2 Gain	High Width	Ratio	Release Speed	Decay
Fader 4	A Dry/Wet	Parameter 2	Hi Shelf Gain	Solo Mode	Attack	Output Gain	Damping
Fader 5	A	Cut Lo	Low Shelf Q		Release	Soft Clip Amount	Dry/Wet
Fader 6	A	Cut Mid	Parametric 1 Q		Output Gain		
Fader 7	A	Cut Hi	Parametric 2 Q				
Fader 8	A	Master Level	Hi Shelf Q				
Knob 1	A Soft Knob 1	Body Resonance	Low Shelf Frequency				
Knob 2	A Soft Knob 2	Body Scale	Parametric 1 Frequency				
Knob 3	A Soft Knob 3	Body Auto	Parametric 2 Frequency				
Knob 4	A Soft Knob 4	Body Type	Hi Shelf Frequency				
Knob 5	A Soft Knob 5						
Knob 6	A Soft Knob 6						
Knob 7	A Soft Knob 7						
Knob 8	A Soft Knob 8						
Switch 1	A EQ On/Off	Damage On/Off	Low Cut Enable	Low Band Active	Soft Knee	Limiter Enable	
Switch 2	A Gate On/Off	Cut On/Off	Low Shelf Enable	High Band Active	Sidechain Solo	Look Ahead Enable	
Switch 3	A	Body On/Off	Parametric 1 Enable	Separate Out Mode	Adapt	Soft Clip Enable	
Switch 4	A		Parametric 2 Enable		Sidechain Active	Output Level Meter Mode	
Switch 5	A		High Shelf Enable				
Switch 6	A						
Switch 7	A						
Switch 8	A						

BANK	DDL-1 DELAY	D-11 DISTORTION	ECF-42 FILTER	CF-101 CHORUS	PH-90 PHASER	UN-16 UNISON	COMP-01	PEQ-2
Fader 1	A DelayTime (steps)	Amount	Frequency	Delay	Frequency	Voice Count	Ratio	Filter A Freq
Fader 2	A DelayTime (ms)	Foldback	Resonance	Feedback	Split	Detune	Threshold	Filter A Q
Fader 3	A Feedback		Env Amount	Rate	Width	Dry/Wet	Attack	Filter A Gain
Fader 4	A Pan		Velocity	Modulation Amount	Rate		Release	Filter B Freq
Fader 5	A Dry/Wet Balance				Frequency Modulation		Gain	Filter B Q
Fader 6	A				Feedback			Filter B Gain
Fader 7	A							
Fader 8	A							
Knob 1	A		Attack					
Knob 2	A		Decay					
Knob 3	A		Sustain					
Knob 4	A		Release					
Knob 5	A							
Knob 6	A							
Knob 7	A							
Knob 8	A							
Switch 1	A Unit		Trigger	Send/Insert Mode	LFO Sync Enable			Filter B On/Off
Switch 2	A Step Length			LFO Sync Enable				
Switch 3	A							
Switch 4	A							
Switch 5	A							
Switch 6	A							
Switch 7	A							
Switch 8	A							



REASON AKAI MPK49 PRESET MAPPINGS

MIXER 14:2							COMBINATOR	RPG-8
BANK	GROUP 1	GROUP 2	GROUP 3	GROUP 4	GROUP 5	GLOBAL		
Fader 1	A	Channel 1 Level	Channel 1 Level	Channel 1 Level	Channel 1 Level	Channel 1 Level		Velocity/Manual
Fader 2	A	Channel 2 Level	Channel 2 Level	Channel 2 Level	Channel 2 Level	Channel 2 Level		Mode
Fader 3	A	Channel 3 Level	Channel 3 Level	Channel 3 Level	Channel 3 Level	Channel 3 Level		Octave
Fader 4	A	Channel 4 Level	Channel 4 Level	Channel 4 Level	Channel 4 Level	Channel 4 Level		Insert
Fader 5	A	Channel 5 Level	Channel 5 Level	Channel 5 Level	Channel 5 Level	Channel 5 Level		Rate
Fader 6	A	Channel 6 Level	Channel 6 Level	Channel 6 Level	Channel 6 Level	Channel 6 Level		Gate Length
Fader 7	A	Channel 7 Level	Channel 7 Level	Channel 7 Level	Channel 7 Level	Channel 7 Level		
Fader 8	A					Master Level		
Knob 1	A	Channel 1 Pan	Channel 1 Aux 1 Send	Channel 1 Aux 2 Send	Channel 1 Aux 3 Send	Channel 1 Aux 4 Send		Rotary 1
Knob 2	A	Channel 2 Pan	Channel 2 Aux 1 Send	Channel 2 Aux 2 Send	Channel 2 Aux 3 Send	Channel 2 Aux 4 Send		Rotary 2
Knob 3	A	Channel 3 Pan	Channel 3 Aux 1 Send	Channel 3 Aux 2 Send	Channel 3 Aux 3 Send	Channel 3 Aux 4 Send		Rotary 3
Knob 4	A	Channel 4 Pan	Channel 4 Aux 1 Send	Channel 4 Aux 2 Send	Channel 4 Aux 3 Send	Channel 4 Aux 4 Send		Rotary 4
Knob 5	A	Channel 5 Pan	Channel 5 Aux 1 Send	Channel 5 Aux 2 Send	Channel 5 Aux 3 Send	Channel 5 Aux 4 Send		
Knob 6	A	Channel 6 Pan	Channel 6 Aux 1 Send	Channel 6 Aux 2 Send	Channel 6 Aux 3 Send	Channel 6 Aux 4 Send		
Knob 7	A	Channel 7 Pan	Channel 7 Aux 1 Send	Channel 7 Aux 2 Send	Channel 7 Aux 3 Send	Channel 7 Aux 4 Send		
Knob 8	A							
Switch 1	A	Channel 1 Mute	Channel 1 Mute	Channel 1 Mute	Channel 1 Mute	Channel 1 Mute		Button 1
Switch 2	A	Channel 2 Mute	Channel 2 Mute	Channel 2 Mute	Channel 2 Mute	Channel 2 Mute		Button 2
Switch 3	A	Channel 3 Mute	Channel 3 Mute	Channel 3 Mute	Channel 3 Mute	Channel 3 Mute		Button 3
Switch 4	A	Channel 4 Mute	Channel 4 Mute	Channel 4 Mute	Channel 4 Mute	Channel 4 Mute		Button 4
Switch 5	A	Channel 5 Mute	Channel 5 Mute	Channel 5 Mute	Channel 5 Mute	Channel 5 Mute		
Switch 6	A	Channel 6 Mute	Channel 6 Mute	Channel 6 Mute	Channel 6 Mute	Channel 6 Mute		
Switch 7	A					Channel 7 Mute		
Switch 8	A							
Fader 9	B	Channel 8 Level	Channel 8 Level	Channel 8 Level	Channel 8 Level	Channel 8 Level		
Fader 10	B	Channel 9 Level	Channel 9 Level	Channel 9 Level	Channel 9 Level	Channel 9 Level		
Fader 11	B	Channel 10 Level	Channel 10 Level	Channel 10 Level	Channel 10 Level	Channel 10 Level		
Fader 12	B	Channel 11 Level	Channel 11 Level	Channel 11 Level	Channel 11 Level	Channel 11 Level		
Fader 13	B	Channel 12 Level	Channel 12 Level	Channel 12 Level	Channel 12 Level	Channel 12 Level		
Fader 14	B	Channel 13 Level	Channel 13 Level	Channel 13 Level	Channel 13 Level	Channel 13 Level		
Fader 15	B	Channel 14 Level	Channel 14 Level	Channel 14 Level	Channel 14 Level	Channel 14 Level		
Fader 16	B							
Knob 9	B	Channel 8 Pan	Channel 8 Aux 1 Send	Channel 8 Aux 2 Send	Channel 8 Aux 3 Send	Channel 8 Aux 4 Send		
Knob 10	B	Channel 9 Pan	Channel 9 Aux 1 Send	Channel 9 Aux 2 Send	Channel 9 Aux 3 Send	Channel 9 Aux 4 Send		
Knob 11	B	Channel 10 Pan	Channel 10 Aux 1 Send	Channel 10 Aux 2 Send	Channel 10 Aux 3 Send	Channel 10 Aux 4 Send		
Knob 12	B	Channel 11 Pan	Channel 11 Aux 1 Send	Channel 11 Aux 2 Send	Channel 11 Aux 3 Send	Channel 11 Aux 4 Send		
Knob 13	B	Channel 12 Pan	Channel 12 Aux 1 Send	Channel 12 Aux 2 Send	Channel 12 Aux 3 Send	Channel 12 Aux 4 Send		
Knob 14	B	Channel 13 Pan	Channel 13 Aux 1 Send	Channel 13 Aux 2 Send	Channel 13 Aux 3 Send	Channel 13 Aux 4 Send		
Knob 15	B	Channel 14 Pan	Channel 14 Aux 1 Send	Channel 14 Aux 2 Send	Channel 14 Aux 3 Send	Channel 14 Aux 4 Send		
Knob 16	B							
Switch 9	B	Channel 8 Mute	Channel 8 Mute	Channel 8 Mute	Channel 8 Mute	Channel 8 Mute		Pattern Step 1
Switch 10	B	Channel 9 Mute	Channel 9 Mute	Channel 9 Mute	Channel 9 Mute	Channel 9 Mute		Pattern Step 2
Switch 11	B	Channel 10 Mute	Channel 10 Mute	Channel 10 Mute	Channel 10 Mute	Channel 10 Mute		Pattern Step 3
Switch 12	B	Channel 11 Mute	Channel 11 Mute	Channel 11 Mute	Channel 11 Mute	Channel 11 Mute		Pattern Step 4
Switch 13	B	Channel 12 Mute	Channel 12 Mute	Channel 12 Mute	Channel 12 Mute	Channel 12 Mute		Pattern Step 5
Switch 14	B	Channel 13 Mute	Channel 13 Mute	Channel 13 Mute	Channel 13 Mute	Channel 13 Mute		Pattern Step 6
Switch 15	B					Channel 14 Mute		
Switch 16	B							
Fader 17	C							
Fader 18	C							
Fader 19	C							
Fader 20	C							
Fader 21	C							
Fader 22	C							
Fader 23	C							
Fader 24	C							
Knob 17	C							
Knob 18	C							
Knob 19	C							
Knob 20	C							
Knob 21	C							
Knob 22	C							
Knob 23	C							
Knob 24	C							
Switch 17	C							Pattern Step 7
Switch 18	C							Pattern Step 8
Switch 19	C							Pattern Step 9
Switch 20	C							Pattern Step 10
Switch 21	C							Pattern Step 11
Switch 22	C							Pattern Step 12
Switch 23	C							
Switch 24	C							



REASON AKAI MPK49 PRESET MAPPINGS

BANK	LINE MIXER 6:2	SUBTRACTOR	MALSTROM	NN19	NNXT	DR. REX	THOR
Fader 1	A	Channel 1 Level	Filter Freq	Filter A Freq	Filter Freq	Filter Freq	Filter 1 Freq
Fader 2	A	Channel 2 Level	Filter Res	Filter A Resonance	Filter Res	Filter Res	Filter 1 Res
Fader 3	A	Channel 3 Level	Filter2 Freq	Filter B Freq	Filter Kbd Track	Amp Env Attack	Filter 2 Freq
Fader 4	A	Channel 4 Level	Filter2 Res	Filter B Resonance	Filter Env Amount	Amp Env Decay	Filter 2 Res
Fader 5	A	Channel 5 Level	Filter Env Attack	Filter Env Attack	Filter Env Attack	Amp Env Release	Filter 3 Freq
Fader 6	A	Channel 6 Level	Filter Env Decay	Filter Env Decay	Filter Env Decay	Mod Env Decay	Filter 3 Res
Fader 7	A	Channel 6 Level	Filter Env Sustain	Filter Env Sustain	Filter Env Sustain	Master Volume	LFO 1 Rate
Fader 8	A	Master Level	Filter Env Release	Filter Env Release	Filter Env Release	Filter Env Release	LFO 2 Rate
Knob 1	A	Channel 1 Pan	Filter Type	Filter Env Amount	Filter Mode	LFO1 Rate	Filter 1 Env Amount
Knob 2	A	Channel 2 Pan	Filter Kbd Track	Filter A Mode	Filter Freq Ext Mod	LFO1 Amount	Filter 1 Drive
Knob 3	A	Channel 3 Pan	Filter Env Amount	Filter B Mode	LFO Ext Mod	LFO1 Wave	Filter 2 Env Amount
Knob 4	A	Channel 4 Pan	Filter Env Vel Amount	Shaper Mode	Amp Ext Mod	LFO1 Dest	Filter 2 Drive
Knob 5	A	Channel 5 Pan	Amp Env Attack	Shaper Amount	Amp Env Attack	Amp Env Attack	Filter 3 Global Env Amount
Knob 6	A	Channel 6 Pan	Amp Env Decay	Spread Amount	Amp Env Decay	Amp Env Decay	Filter 3 Drive
Knob 7	A	Aux Return Level	Amp Env Sustain	Portamento	Amp Env Sustain	Amp Env Sustain	Rotary 1
Knob 8	A	Aux Return Level	Amp Env Release	Master Level	Amp Env Release	Amp Env Release	Rotary 2
Switch 1	A	Channel 1 Mute	FilterLink Freq On/Off	Filter A On/Off	Filter On/Off	Filter On/Off	Osc 1 To Filter 1 Enable
Switch 2	A	Channel 2 Mute	Filter2 On/Off	Filter A Env	Filter Env Invert	LFO Sync Enable	Osc 2 To Filter 1 Enable
Switch 3	A	Channel 3 Mute	Filter Env Invert	Filter B On/Off		Preview	Osc 3 To Filter 1 Enable
Switch 4	A	Channel 4 Mute	Mod Env Invert	Filter B Env		Select Next Loop	Osc 1 To Filter 2 Enable
Switch 5	A	Channel 5 Mute		Filter Env Invert		Select Previous Loop	Osc 2 To Filter 2 Enable
Switch 6	A	Channel 6 Mute		Shaper On/Off			Osc 3 To Filter 2 Enable
Switch 7	A						
Switch 8	A						
Fader 9	B		Osc1 Wave	Oscillator A Attack	Osc Octave	Filter Env Vel Amount	Filter Env Attack
Fader 10	B		Osc1 Octave	Oscillator A Decay	Osc Semitone	Filter Decay Vel Amount	Filter Env Decay
Fader 11	B		Osc1 Semitone	Oscillator A Sustain	Osc Fine Tune	Amp Vel Amount	Filter Env Sustain
Fader 12	B		Osc2 Wave	Oscillator A Release	Osc Env Amount	Filter Freq Mod Wheel Amount	Filter Env Release
Fader 13	B		Osc2 Octave	Oscillator B Attack	Sample Start	Filter Res Mod Wheel Amount	Amp Env Attack
Fader 14	B		Osc2 Semitone	Oscillator B Decay	Master Level	Filter Decay Mod Wheel Amount	Amp Env Decay
Fader 15	B		FM Amount	Oscillator B Sustain		Polyphony	Amp Env Sustain
Fader 16	B		Osc Mix	Oscillator B Release		Transpose	Amp Env Release
Knob 9	B	Channel 1 Aux Send	Noise Color	Oscillator A Motion	LFO Rate	Osc Octave	Mod Env Delay
Knob 10	B	Channel 2 Aux Send	Noise Level	Oscillator A Shift	LFO Amount	Osc Fine Tune	Mod Env Attack
Knob 11	B	Channel 3 Aux Send	Mod Env Gain	Oscillator A Octave	LFO Wave	Osc Env Amount	Mod Env Decay
Knob 12	B	Channel 4 Aux Send	Mod Env Dest	Oscillator A Gain	LFO Dest		Mod Env Release
Knob 13	B	Channel 5 Aux Send	Mod Env Attack	Oscillator B Motion			Global Env Attack
Knob 14	B	Channel 6 Aux Send	Mod Env Decay	Oscillator B Shift			Global Env Decay
Knob 15	B		Mod Env Sustain	Oscillator B Octave			Global Env Sustain
Knob 16	B		Mod Env Release	Oscillator B Gain			Global Env Release
Switch 9	B	Channel 1 Solo	Osc2 On/Off	Oscillator A On/Off	Osc Kbd Track		
Switch 10	B	Channel 2 Solo	Osc2 Kbd Track	Route Oscillator A To Shaper	LFO Sync Enable		
Switch 11	B	Channel 3 Solo	Ring Mod	Route Oscillator A To Filter B	High Quality Interpolation		
Switch 12	B	Channel 4 Solo	Noise On/Off	Oscillator B On/Off	Low Bandwidth On/Off		
Switch 13	B	Channel 5 Solo		Route Oscillator B To Filter B			
Switch 14	B	Channel 6 Solo		Route Filter B To Shaper			
Switch 15	B						
Switch 16	B						
Fader 17	C		LFO1 Rate	Modulator A Rate	Filter Env Vel Amount		Osc 1 Mod
Fader 18	C		LFO1 Amount	Modulator A To Pitch	Filter Decay Vel Amount		Osc 2 Mod
Fader 19	C		LFO1 Wave	Modulator A To Index	Amp Vel Amount		Osc 3 Mod
Fader 20	C		LFO1 Dest	Modulator A To Shift	Amp Attack Vel Amount		Osc 1 AM From Osc 2
Fader 21	C		LFO2 Rate	Modulator B Rate	Sample Start Vel Amount		Osc 2 Sync BW
Fader 22	C		LFO2 Amount	Modulator B To Motion	Portamento		Osc 3 Sync
Fader 23	C		LFO2 Delay	Modulator B To Level	Polyphony		Osc 1 And 2 Level
Fader 24	C		LFO2 Dest	Modulator B To Filter	Spread		Osc 3
Knob 17	C		Ext Mod Select	Modulator A Curve	Filter Freq Mod Wheel Amount		Delay Time
Knob 18	C		Filter Freq Ext Mod	Modulator A Target	Filter Res Mod Wheel Amount		Delay Feedback
Knob 19	C		LFO1 Ext Mod	Modulator B Curve	Filter Decay Mod Wheel Amount		Delay Rate
Knob 20	C		Amp Ext Mod	Modulator B Target	Amp Mod Wheel Amount		Delay Amt
Knob 21	C		FM Ext Mod	Modulator B To Modulator A	LFO Mod Wheel Amount		Delay Dry Wet
Knob 22	C		Filter Freq Mod Wheel Amount	Velocity To Level A			
Knob 23	C		Filter Res Mod Wheel Amount	Velocity To Level B			Osc 1 And 2 Balance
Knob 24	C		LFO2 Kbd Track	Velocity To Filter Env			Shaper Drive
Switch 17	C		LFO Sync Enable	Modulator A On/Off			Osc 2 Sync To Osc 1
Switch 18	C			Modulator A One Shot			Osc 3 Sync To Osc 1
Switch 19	C			Modulator A Sync			Delay On
Switch 20	C			Modulator B On/Off			Delay Sync
Switch 21	C			Modulator B One Shot			Shaper On
Switch 22	C			Modulator B Sync			Shaper Output
Switch 23	C						
Switch 24	C						



REASON AKAI MPK49 PRESET MAPPINGS

		REDRUM		BV512 VOCODER				MATRIX
BANK	GLOBAL	GROUP1	GROUP2	GLOBAL	GROUP1	GROUP2	GROUP3	
Fader 1	A	Drum 1 Level	Drum 9 Level	Band Count	Band Level 1	Mod Level 1	Band Level 25	Pattern Select in Bank
Fader 2	A	Drum 2 Level	Drum 10 Level	Shift	Band Level 2	Mod Level 2	Band Level 26	Bank Select
Fader 3	A	Drum 3 Level		Attack	Band Level 3	Mod Level 3	Band Level 27	Resolution
Fader 4	A	Drum 4 Level		Decay	Band Level 4	Mod Level 4	Band Level 28	
Fader 5	A	Drum 5 Level		HF Emphasis	Band Level 5	Mod Level 5	Band Level 29	
Fader 6	A	Drum 6 Level		Dry/Wet	Band Level 6	Mod Level 6	Band Level 30	
Fader 7	A	Drum 7 Level			Band Level 7	Mod Level 7	Band Level 31	
Fader 8	A	Drum 8 Level			Band Level 8	Mod Level 8	Band Level 32	
Knob 1	A	Drum 1 Pan	Drum 9 Pan					
Knob 2	A	Drum 2 Pan	Drum 10 Pan					
Knob 3	A	Drum 3 Pan						
Knob 4	A	Drum 4 Pan						
Knob 5	A	Drum 5 Pan						
Knob 6	A	Drum 6 Pan						
Knob 7	A	Drum 7 Pan						
Knob 8	A	Drum 8 Pan						
Switch 1	A	Pattern 1		Vocoder/Equalizer				Pattern 1
Switch 2	A	Pattern 2		Hold				Pattern 2
Switch 3	A	Pattern 3						Pattern 3
Switch 4	A	Pattern 4						Pattern 4
Switch 5	A							Run
Switch 6	A							Pattern Enable
Switch 7	A							
Switch 8	A							
Fader 9	B	Drum 1 Pitch	Drum 9 Pitch		Band Level 9	Mod Level 9	Mod Level 25	
Fader 10	B	Drum 2 Pitch	Drum 10 Pitch		Band Level 10	Mod Level 10	Mod Level 26	
Fader 11	B	Drum 3 Pitch			Band Level 11	Mod Level 11	Mod Level 27	
Fader 12	B	Drum 4 Pitch			Band Level 12	Mod Level 12	Mod Level 28	
Fader 13	B	Drum 5 Pitch			Band Level 13	Mod Level 13	Mod Level 29	
Fader 14	B	Drum 6 Pitch			Band Level 14	Mod Level 14	Mod Level 30	
Fader 15	B	Drum 7 Pitch			Band Level 15	Mod Level 15	Mod Level 31	
Fader 16	B	Drum 8 Pitch			Band Level 16	Mod Level 16	Mod Level 32	
Knob 9	B	Drum 1 Length	Drum 9 Length					
Knob 10	B	Drum 2 Length	Drum 10 Length					
Knob 11	B	Drum 3 Length						
Knob 12	B	Drum 4 Length						
Knob 13	B	Drum 5 Length						
Knob 14	B	Drum 6 Length						
Knob 15	B	Drum 7 Length						
Knob 16	B	Drum 8 Length						
Switch 9	B	Pattern 5						Pattern 5
Switch 10	B	Pattern 6						Pattern 6
Switch 11	B	Pattern 7						Pattern 7
Switch 12	B	Pattern 8						Pattern 8
Switch 13	B	Bank A						
Switch 14	B	Bank B						
Switch 15	B	Bank C						
Switch 16	B	Bank D						
Fader 17	C	Drum 1 Vel to Level	Drum 9 Vel to Level		Band Level 17	Mod Level 17		
Fader 18	C	Drum 2 Vel to Level	Drum 10 Vel to Level		Band Level 18	Mod Level 18		
Fader 19	C	Drum 3 Vel to Level			Band Level 19	Mod Level 19		
Fader 20	C	Drum 4 Vel to Level			Band Level 20	Mod Level 20		
Fader 21	C	Drum 5 Vel to Level			Band Level 21	Mod Level 21		
Fader 22	C	Drum 6 Vel to Level			Band Level 22	Mod Level 22		
Fader 23	C	Drum 7 Vel to Level			Band Level 23	Mod Level 23		
Fader 24	C	Drum 8 Vel to Level			Band Level 24	Mod Level 24		
Knob 17	C		Drum 9 Send 1 Amount					
Knob 18	C		Drum 10 Send 1 Amount					
Knob 19	C							
Knob 20	C							
Knob 21	C							
Knob 22	C							
Knob 23	C							
Knob 24	C							
Switch 17	C							Bank A
Switch 18	C							Bank B
Switch 19	C							Bank C
Switch 20	C							Bank D
Switch 21	C							
Switch 22	C							
Switch 23	C							
Switch 24	C							
Pad D1	D	Ch1 Play						
Pad D2	D	Ch2 Play						
Pad D3	D	Ch3 Play						
Pad D4	D	Ch4 Play						
Pad D5	D	Ch5 Play						
Pad D6	D	Ch6 Play						
Pad D7	D	Ch7 Play						
Pad D8	D	Ch8 Play						
Pad D9	D	Ch9 Play						
Pad D10	D	Ch10 Play						

USING THE MPK49 WITH SONAR

1. In Sonar, go to **Tools/ Sonar Plugin** manager.
2. In Categories, select **Control Surfaces**.
3. In 'Registered Plugins', choose **Cakewalk Generic Surface**.
4. Press **Insert**, then navigate to the file named "MPK49.spp" and press **Open**.
5. Go to **Options / Control Surfaces**.
6. Press **Add new control surfaces**.
7. Choose **Cakewalk Generic Surface**.
8. Select **USB AUDIO DEVICE 2** to both the IN PORT and the OUT PORT
9. Press **Close**.
10. Go to **Tools / Cakewalk Generic Surface**.
11. Under 'Presets' select **Akai MPK49**.

To use the MPK49 transport controls in sonar, do the following:

1. Select **Options / Control Surfaces**.
2. Press the **Add New Control Surface** button
3. Choose **MMC** for control surface, and choose **USB AUDIO DEVICE** for in and out ports.
4. Press **OK**.

With this configuration, control surface commands from the MPK49's sliders and knobs will be sent on port B, and the keyboard, mod wheel etc, will be sent on port A, allowing you to simultaneously record midi keyboard performances and automation.

Assignments:

FADERS 1-8, 9-16, 17-24	= Channel Volume 1-8
KNOBS 1-8	= Pan 1-8
BUTTONS 1-8	= Mute 1-8
KNOBS 9-16	= Send 1 level 1-8
BUTTONS 9-16	= Record Arm 1-8
KNOBS 17-24	= Send 2 Level 1-8
BUTTONS 17-24	= Solo 1-8
PAD 1	= Fader Bank Move Left 8
PAD 2	= Automation Record
PAD 3	= Fader Bank Move Right 8

Pressing pads 1 and 3 can move the bank of controllers you are working with by 8. Using these pads, any channel in your project can be controlled with ease.

USING THE MPK49 WITH ARTURIA SYNTHS



We have made a template file for most of the popular Arturia synths that all work in conjunction with the Arturia Preset on the MPK49. Each Arturia synth has its own MIDI Map file that will automatically assign the functions within that synth. This file is named **controlMIDI**.

Each synth's controlMIDI file needs to be copied to the following folder so that the mapping will work. Be aware that writing over the existing controlMIDI file will change any custom MIDI learn mappings you have made.

ARP2600V

Mac – Library/Preferences/arp2600v/save/
PC – C:\Program Files\Arturia\arp2600v\save\

CS80V

Mac – Library/Preferences/Cs80V/save/
PC – C:\Program Files\Arturia\Cs80V\save\

MOOG MODULAR V

Mac – Library/Preferences/MoogModularV2/save/
PC – C:\Program Files\Arturia\MoogModularV2\save\

MINIMOOG V

Mac – Library/Preferences/minimoog v/save/
PC – C:\Program Files\Arturia\MinimoogV\save\

PROPHET V

Mac – Library/Preferences/ProphetV/save/
PC – C:\Program Files\Arturia\ProphetV\save\

JUPITER 8V

Mac – Library/Preferences/Jupiter8V/save/
PC – C:\Program Files\Arturia\Jupiter8V\save\

PROPHET V

Mac – Library/Preferences/Analog Studio/save/
PC – C:\Program Files\Arturia\Analog Studio\save\

AKAI MPK49 PRESET MAPPINGS

BANK	ARP2600V	CS80V	MOOG MODULAR V	MINIMOOG V	PROPHET V	JUPITER 8V	ANALOG STUDIO
Fader 1	A	VCF Cutoff	HPF Cutoff I	Filter 1 Cutoff	VCF Cutoff	P5-VCF Cutoff	Cutoff Filter
Fader 2	A	VCF Resonance	HPF Reso I	Filter 2 Cutoff	VCF Emphasis	P5-VCF Reso	Reso.
Fader 3	A	VCF input 1	LPF Cutoff I	Filter 3 Cutoff	VCF Env Amount	P5-VCF Env Amount	LFO Rate
Fader 4	A	VCF input 2	LPF Reso I	LFO 1 Freq	Mod Mix	P5-VCF KBD	LFO Amt
Fader 5	A	VCF input 3	VCF Attack Level I	2D pad A - X	Glide	P5-VCF ENV Attack	Env1 Attack
Fader 6	A	VCF input 4	VCF Attack I	2D pad A - Y	VCF ENV Attack	P5-VCF ENV Decay	Env1 Decay
Fader 7	A	VCF input 5	VCF Decay I	2D pad B - X	VCF ENV Decay	P5-VCF ENV Sustain	Env1 Sustain
Fader 8	A	Global Volume	VCF Release I	2D pad B - Y	VCF ENV Sustain	P5-VCF ENV Release	Env1 Release
Knob 1	A	VCF Cutoff Fine	PWM Speed I	Filter 1 Res.	OSC Vol. 1	P5-poly-mod FilENV	Source Mix
Knob 2	A	VCF Notch Freq	PWM Amount I	Filter 2 Res.	OSC Vol. 2	P5-poly-mod OSC B	VCF LFO Mod
Knob 3	A	VCF Control In 1	Pulse Width I	Filter 3 Res.	OSC Vol. 3	P5-LFO Rate	VCF Key follow
Knob 4	A	VCF Control In 2	Noise Level I	Lfo 2 Freq	Ext. Input Vol.	P5-whl-mod LFO/Noise	VCA Lfo Mod
Knob 5	A	VCF Control In 3	VCA Attack I	Pan VCA 1	Noise Volume	P5-VCA Attack	Env2 Attack
Knob 6	A	Final Mix Volume	VCA Decay I	Pan VCA 2	VCA ENV Attack	P5-VCA Decay	Env2 Decay
Knob 7	A	Reverb Rt&Lf Amount	VCA Sustain I	Glide Time	VCA ENV Decay	P5-VCA Sustain	Env2 Sustain
Knob 8	A	Pan	VCA Release I	Volume	VCA ENV Sustain	P5-VCA Release	Env2 Release
Switch 1	A			Seq On	OSC On/Off 1	P5-OSC 1 Saw	VCF slope
Switch 2	A			Seq Off	OSC On/Off 2	P5-OSC 1 Pulse	VCF Env 1/2 select
Switch 3	A			Seq Fwd/Rev	OSC On/Off 3	P5-OSC2 Saw	ENV1 Keyboard
Switch 4	A		Exp Enable	Legato On/Off	Ext In On/Off	P5-OSC 2 Tri	ENV1 polarity
Switch 5	A		Exp Wah Enable	Retrigger On/Off	Noise On/Off	P5-OSC 2Oulse	ENV2 Keyboard
Switch 6	A		Port Pedal On/Off		White/Pink Noise	P5-Poly-Mod FreqA	
Switch 7	A		Sustain Mode	Glide On/Off	OSC Mod On/Off	P5-Poly-Mod PWA	
Switch 8	A		Port/Gliss		VCF Mod On/Off	P5-Poly-Mod Filt	
Fader 9	B	Seq Pitch 1	HPF Cutoff II	VCA1 Attack	OSC Range 1	VS-VCF Cutoff	LFO Rate
Fader 10	B	Seq Pitch 2	HPF Reso II	VCA1 Decay	OSC Range 2	VS-VCF Reso	LFO Time Delay
Fader 11	B	Seq Pitch 3	LPF Cutoff II	VCA1 Sustain	OSC Range 3	VS-VCF Env Amt	VCO mod - LFO
Fader 12	B	Seq Pitch 4	LPF Reso II	VCA1 Release	OSC 2 Coarse Tune	VS-LFO 1 Rate	VCO mod - ENV
Fader 13	B	Seq Pitch 5	VCF Attack Level II	VCA2 Attack	OSC 2 Fine Tune	VS-LFO 2 Rate	VCO PWM
Fader 14	B	Seq Pitch 6	VCF Attack II	VCA2 Decay	OSC 3 Coarse Tune	VS-	Cross mod
Fader 15	B	Seq Pitch 7	VCF Decay II	VCA2 Sustain	OSC 3 Fine Tune	VS-Joystick X	VCO1 Octave
Fader 16	B	Seq Pitch 8	VCF Release II	VCA2 Release	Voice Detune	VS-Joystick Y	VCO2 Octave
Knob 9	B	VCO Coarse Tune 1	PWM Speed II	VCF1 Attack	OSC Wave 1	VS-OSC A Freq	LFO Wave
Knob 10	B	VCO Coarse Tune 2	PWM Amount II	VCF1 Decay	OSC Pulse Width 1	VS-OSC A Wave	VCO1 Wave
Knob 11	B	VCO Coarse Tune 3	Pulse Width II	VCF1 Sustain	OSC Wave 2	VS-OSC B Freq	VCO2 Wave
Knob 12	B	VCO 2&3 Pulse	Noise Level II	VCF1 Release	OSC Pulse Width 2	VS-OSC B Wave	
Knob 13	B	ADSR Attack	VCA Attack II	VCF2 Attack	OSC Wave 3	VS-OSC C Freq	
Knob 14	B	ADSR Decay	VCA Decay II	VCF2 Decay	OSC Pulse Width 3	VS-OSC C Wave	
Knob 15	B	ADSR Sustain	VCA Sustain II	VCF2 Sustain	LFO Rate	VS-OSC D Freq	
Knob 16	B	ADSR Release	VCA Release II	VCF2 Release	LFO Wave	VS-OSC D Wave	
Switch 9	B				Osc Sync On/Off	P5-LFO Saw	VCOmod 1/2 select
Switch 10	B				Osc 3 Control On/Off	P5-LFO Tri	VCO mod LFO/ENV select
Switch 11	B					P5-LFO Pulse	VCO Sync On/Off
Switch 12	B					P5-WhlMod FreqA	VCO Norm/Low
Switch 13	B					P5-WhlMod FreqB	
Switch 14	B					P5-WhlMod PW A	
Switch 15	B				Unison On/Off	P5-WhlMod PW B	
Switch 16	B				LFO MIDI Sync On/Off	P5-WhlMod Filt	
Fader 17	C	Seq Pitch 9	Sub OSC Speed	VCO Freq Coarse 1	Arp Speed	VS-Matrix amt 1	
Fader 18	C	Seq Pitch 10	Sub OSC VCO	VCO Freq Coarse 2	Arp Mode	VS-Matrix amt 2	
Fader 19	C	Seq Pitch 11	Sub OSC VCF	VCO Freq Coarse 3	Arp Octave	VS-Matrix amt 3	
Fader 20	C	Seq Pitch 12	Sub OSC VCA	VCO Freq Coarse 4	Arp Repeat	VS-Matrix amt 4	Galaxy-Axis Angle
Fader 21	C	Seq Pitch 13		VCO Freq Coarse 5		VS-Matrix amt 5	Galaxy-Axis RATE
Fader 22	C	Seq Pitch 14	Mix I/II	VCO Freq Coarse 6	Chorus Rate	VS-Matrix amt 6	Galaxy-X1 amt
Fader 23	C	Seq Pitch 15	Master Brilliance	Bode Freq Shift/Noise HPF	Chorus Depth	VS-Matrix amt 7	Galaxy-X2 amt
Fader 24	C	Seq Pitch 16	Master Reso	S/H Rate / Ring Mode Freq.	Chorus Wet/Dry	VS-Matrix amt 8	Galaxy-X3 amt
Knob 17	C	Track Gen Freq 1	Arp Speed	VCO Freq Fine 1	Mod Amt 1	P5-OSC A Freq	
Knob 18	C	Track Gen Freq 2	Arp Mode	VCO Freq Fine 2	Mod Amt 2	P5-OSC A PW	
Knob 19	C	Track Gen Freq 3	Arp Octave Range	VCO Freq Fine 3	Mod Amt 3	P5-OSC B Freq	
Knob 20	C	Track Gen Freq 4	Arp Repeat	VCO Freq Fine 4	Delay Time Lf	P5-OSC B Fine	Galaxy-LFO1 RATE
Knob 21	C	Track Gen Smooth 1		VCO Freq Fine 5	Delay Time Rt	P5-OSC B PW	Galaxy-LFO2 RATE
Knob 22	C	Track Gen Smooth 2	Delay Speed	VCO Freq Fine 6	Delay Feedbk Lf	P5-Mix Osc A	Galaxy-Y1 amt
Knob 23	C	Track Gen Smooth 3	Delay Depth	Bode Range/Noise LPF	Delay Feedbk Rt	P5-Mix Osc B	Galaxy-Y2 amt
Knob 24	C	Track Gen Smooth 4	Delay Mix	S/H Glide / Ring Mod Depth	Delay Dry/Wet	P5-Mix Noise	Galaxy-Y3 amt
Switch 17	C		Arp Play		Arp MIDI Sync On/Off		
Switch 18	C		Arp Hold		Arp Play On/Off		
Switch 19	C				Arp Hold On/Off		
Switch 20	C						
Switch 21	C						
Switch 22	C				Decay On/Off		
Switch 23	C		Chorus Enable		Release On/Off		
Switch 24	C		Delay Enable		Legato On/Off		

USING THE MPK49 WITH BFD



BFD is the premiere software drum module, featuring high-quality drum samples for realistic drum performance. BFD can be used as a standalone computer application, or as a VST instrument which can be dropped into your favorite host environment.

We have included a default MIDI map for BFD which gives you access to all the major features of the software.

The MPK49 comes with a preset which is already set up to work with BFD.

1. To use the FxpanBFD preset you will need to copy the **Akai_MPK49_BFD.bfc** file from the CD to your **BFD folder** on your hard drive. This BFD folder has all of your FILLS, GROOVES, KEYMAPS, KITS etc. You will find a file labeled **default.bfc** – place the Akai_MPK49_BFD.bfc file at this same directory level.
2. To load this MIDI CC map file, start BFD and click on the **HIT OPTIONS** icon on the middle right of the BFD screen.
 - a. This will open a dialog box that has PAGE1, PAGE2, ADVANCED and MIDI CC's options.
 - b. Click on the **MIDI CC's** tab.
 - c. Now to the left of the PAGE 1 option, click on the **LOAD MIDI CC ASSIGNMENTS** icon.
 - d. Choose the **Akai_MPK49_BFD.bfc** file and BFD will now be mapped to correspond to the FxPanBFD preset on the MPK49.
3. To load the preset in the MPK49, press the **[PRESET]** button and use the **[VALUE]** dial to select preset number 7 – “FxPanBFD”. Press the **[VALUE]** dial to load the preset.

- ! If you have edited MPK49's presets and are unable to load BFD, use the supplied Vyzex Editor to load the Factory Preset Bank and “PUT” or download the factory preset bank into the MPK49.

NOTE: If you want this MIDI CC file to be the default MIDI CC map on BFD, rename the file default.bfc and it will automatically load every time.



AKAI MPK49 PRESET MAPPINGS

BANK	BFD LITE
Fader 1	A DIRECT MASTER
Fader 2	A OVERHEAD
Fader 3	A ROOM
Fader 4	A PZM
Fader 5	A MASTER
Fader 6	A Master Dynamics
Fader 7	A Kick Mic In/Out
Fader 8	A Snare Mic Top/Bottom
<hr/>	
Knob 1	A OVERHEAD DISTANCE
Knob 2	A OVERHEAD WIDTH
Knob 3	A ROOM DISTANCE
Knob 4	A ROOM WIDTH
Knob 5	A PZM DISTANCE
Knob 6	A PZM WIDTH
Knob 7	A
Knob 8	A
<hr/>	
Switch 1	A DIRECT MASTER MUTE
Switch 2	A OVERHEAD MUTE
Switch 3	A ROOM MUTE
Switch 4	A PZM MUTE
Switch 5	A DIRECT MASTER SOLO
Switch 6	A OVERHEAD SOLO
Switch 7	A ROOM SOLO KICK SOLO
Switch 8	A PZM SOLO
<hr/>	
Fader 9	B KICK 1 Direct TRIM
Fader 10	B SNARE 1 Direct TRIM
Fader 11	B HIHAT Direct TRIM
Fader 12	B TOM F Direct TRIM
Fader 13	B TOM M Direct TRIM
Fader 14	B TOM H Direct TRIM
Fader 15	B CYM 1 Direct TRIM
Fader 16	B CYM 2 Direct TRIM
<hr/>	
Knob 9	B KICK 1 Direct PAN
Knob 10	B SNARE 1 Direct PAN
Knob 11	B HIHAT Direct PAN
Knob 12	B TOM F Direct PAN
Knob 13	B TOM M Direct PAN
Knob 14	B TOM H Direct PAN
Knob 15	B CYM 1 Direct PAN
Knob 16	B CYM 2 Direct PAN
<hr/>	
Switch 9	B KICK MUTE
Switch 10	B SNARE MUTE
Switch 11	B HIHAT MUTE
Switch 12	B TOM F MUTE
Switch 13	B TOM M MUTE
Switch 14	B TOM H MUTE
Switch 15	B CYM 1 MUTE
Switch 16	B CYM 2 MUTE
<hr/>	
Fader 17	C KICK TRIM
Fader 18	C SNARE TRIM
Fader 19	C HIHAT TRIM
Fader 20	C TOM F TRIM
Fader 21	C TOM M TRIM
Fader 22	C TOM H TRIM
Fader 23	C CYM 1 TRIM
Fader 24	C CYM 2 TRIM
<hr/>	
Knob 17	C KICK TUNE
Knob 18	C SNARE TUNE
Knob 19	C HIHAT TUNE
Knob 20	C TOM F TUNE
Knob 21	C TOM M TUNE
Knob 22	C TOM H TUNE
Knob 23	C CYM 1 TUNE
Knob 24	C CYM 2 TUNE
<hr/>	
Switch 17	C KICK SOLO
Switch 18	C SNARE SOLO
Switch 19	C HIHAT SOLO
Switch 20	C TOM F SOLO
Switch 21	C TOM M SOLO
Switch 22	C TOM H SOLO
Switch 23	C CYM 1 SOLO
Switch 24	C CYM 2 SOLO

USING THE MPK49 WITH EXPANSION GURU

GURU
SLICE • SEQUENCE • MIX

Expansion's Guru software is a very flexible and creative tool for making all kinds of beats and grooves. Guru comes preset with default MIDI note and controller note mappings that serve a bunch of different purposes. Notes can be set to trigger sounds, map a sound chromatically and play it from a keyboard, trigger different patterns and trigger different scenes.

There are 8 MIDI controllers that are set up for using with the individual voice engines called Pad Groups, and 8 more that are setup to be used with any of the the FX Group. Reference the Guru manual to see how to assign these functions to the different parameters.

We have supplied a preset that makes use of the most used functions of Guru. This preset is meant to be used with GURU's GENERIC CONTROLLER map in the OPTIONS menu.

KEYBOARD – The keyboard is set to trigger pads from middle C up 16 notes. The default is set to control ENGINE 1 on MIDI Channel 1. By editing the keyboard MIDI channel, you can select which voice engine you are controlling. We set middle C to be the pads so that if you have "Pattern keys play selected pad chromatically" in the OPTIONS/MIDI page, you will then hear the currently selected pad played chromatically on the bottom two octaves of the keyboard. If you press the OCTAVE UP button twice, the drum pads will play on the lowest 16 notes of the keyboard and the notes from middle C up will trigger different SCENES.

TRANSPORT Controls – GURU makes use of MMC for its transport controls. If you have the latest version of Guru it will automatically make use of MMC messages. GURU makes use of the << REW command and assigns it to the COMMIT function and the >> FF command and assigns it to the UNDO function.

MIDI Controllers – We have created 3 different options for continuous controller mapping with GURU. Since the MIDI controllers are color coded in Guru we will call them as follows:

Red = 1
Orange = 2
Yellow = 3
Green = 4
Lt Blue = 5
Blue = 6
Purple = 7
Grey = 8

Controller Bank A

Knobs 1- 8 - Pad Group 1-8
Sliders 1- 8 - FX Group 1-8
Switches 1- 4 – Pad Group 5-8
Switches 5-8 – FX Group 5-8

Controller Bank B

(Knobs and Sliders in Controller Bank B are reversed from Controller Bank A)

Knobs 1- 8 - FX Group 1-8
Sliders 1- 8 - Pad Group 1-8
Switches 1- 4 – Pad Group 5-8
Switches 5-8 – FX Group 5-8

Controller Bank C

(Knobs and sliders are split so that you get 4 knobs and 4 sliders for each Group.)

Knobs 1- 4 - Pad Group 1-4
Knobs 5- 8 - FX Group 1-4
Sliders 1- 4 - Pad Group 1-4
Sliders 5- 8 - FX Group 5-8
Switches 1- 4 – Pad Group 5-8
Switches 5-8 – FX Group 5-8

PADS – We have purposely left the pad mapping to be chromatic. The pads can be customized for so many uses in Guru that we didn't want to make them too specialized. Currently the 12 pads in bank A and Pads 1-4 in bank B will normally play the Guru pads. We left these set to the COMMON channel so that you could quickly change them to different voice engines by changing the COMMON channel in the GLOBAL menu. But depending on how you are using Guru you may want to change the pad note and channel mappings. For instance:

Recording patterns - you may want to leave the way they are. This will allow you to play your drum sounds and allow you to shift engines via changing the Common channel.

Playing Live – you may want to assign the pads to different MIDI channels and notes so as to trigger SCENES or PATTERNS in a real0time DJ style work flow.

USING THE MPK49 WITH G-MEDIA SYNTHS



AKAI MPK49 PRESET MAPPINGS

MINIMONSTA

To install the configuration file, click on "SET UP" and choose "LOAD".
Select the configuration file and choose "LOAD".

IMPOSCAR

VST:
Place "ImpOSCar.sup" in the same directory as ImpOSCar.DLL.
(Example: "C:\Program Files\Steinberg\VstPlugins\Gmedia\impOSCar")

Standalone:

Place "ImpOSCar.sup" in to the same directory as ImpOSCar.EXE.
(Example: "C:\Program Files\GMedia\impOSCar")

ODDITY

To install the configuration file, click on "SET UP" and choose load.
Select the configuration file and choose load.

BANK	MINIMONSTA	IMPOSCAR	ODDITY
Fader 1	A	Cutoff	Filter Freq
Fader 2	A	Emphasis	Filter Q
Fader 3	A	Contour	Env Amt
Fader 4	A	Cutoff LFO Amp	FiltDrive
Fader 5	A	Cutoff LFO Time	F Env Attk
Fader 6	A	F Env Attack	F Env Dec
Fader 7	A	F Env Decay	F Env Sus
Fader 8	A	F Env Sustain	F Env Rel
Knob 1	A	Cutoff LFO Shape	Filter Type
Knob 2	A	Cutoff LFO Delay	Filter Separation
Knob 3	A	Cutoff LFO S+H	Filter Keytrack
Knob 4	A	Emphasis LFO Amp	F Env Delay
Knob 5	A	Emphasis LFO Time	A Env Attk
Knob 6	A	A Env Attack	A Env Dec
Knob 7	A	A Env Decay	A Env Sus
Knob 8	A	A Env Sustain	A Env Rel
Switch 1	A	Filter Modulation	Kbd CV / S+H Mixer
Switch 2	A	Kybd ctrl 1	S+H / LFO
Switch 3	A	Kybd ctrl 2	ADSR / AR to VCF
Switch 4	A	Osc Mod	AR / ADSR to HPF
Switch 5	A	Osc 3 Ctrl	Kbd Gate / LFO Repeat
Switch 6	A	Feedback	Kbd Repeat / Auto Repeat
Switch 7	A	Glide	Kbd Gate / Repeat
Switch 8	A	Decay	MONO / DUO
Fader 9	B	OSC1 Vol	Oct Shift
Fader 10	B	Ext Input Vol	Transpose
Fader 11	B	Osc2 Vol	Osc Bal
Fader 12	B	Osc2 Tune	Noise Bal
Fader 13	B	Osc3 Vol	LFO Waveform
Fader 14	B	Osc3 Tune	LFO Rate
Fader 15	B	Noise Vol	LFO - Pitch amt
Fader 16	B	Mod Mix	LFO - Filt amt
Knob 9	B	Osc1 Waveform	Osc 1 Waveform
Knob 10	B	Osc1 Range	Osc 2 Waveform
Knob 11	B	Osc2 Waveform	Pulse Width
Knob 12	B	Osc2 Range	Detune
Knob 13	B	Osc3 Waveform	Env2 to pitch
Knob 14	B	Osc3 Range	Octave
Knob 15	B	Unison Detune	MW Pitch Amt
Knob 16	B	Glide time	MW Filt Amt
Switch 9	B	OSC1 On/Off	VCO 1 FM LFO Shape
Switch 10	B	Ext In On/Off	VCO 1 FM S+H / ADSR
Switch 11	B	Osc2 On/Off	VCO 1 PW Mod LFO / ADSR
Switch 12	B	Osc3 On/Off	VCO 2 S+H / LFO
Switch 13	B	Noise On/Off	VCO 2 S+H / ADSR
Switch 14	B	Noise Select	VCO 2 PW Mod LFO / ADSR
Switch 15	B	Unison On/Off	Audio Kbd On/Off
Switch 16	B	Glide On/Off	Sync On/Off
Fader 17	C	Osc1 Vol LFO Amp	LFO Intro
Fader 18	C	Osc2 Tune LFO Amp	Chorus Level
Fader 19	C	Osc2 Vol LFO Amp	Delay Level
Fader 20	C	Osc3 Tune LFO Amp	Delay Tempo
Fader 21	C	Osc3 Vol LFO Amp	Chorus Depth
Fader 22	C	Noise Vol LFO Amp	Chorus Rate
Fader 23	C	Pan LFO Amp	Delay Mix L
Fader 24	C	Tune LFO Amp	Delay Mix R
Knob 17	C	Osc1 Vol LFO Time	Delay Gate
Knob 18	C	Osc2 Tune LFO Time	Delay Units
Knob 19	C	Osc2 Vol LFO Time	Delay HP
Knob 20	C	Osc3 Tune LFO Time	Delay LP
Knob 21	C	Osc3 Vol LFO Time	Delay Length Left
Knob 22	C	Noise Vol LFO Time	Delay Length Right
Knob 23	C	Pan LFO Time	Delay Feedback L
Knob 24	C	Tune LFO Time	Delay Feedback R
Switch 17	C		VCO 1 S+H Mixer Shape
Switch 18	C		VCO 2 S+H Mixer Shape
Switch 19	C		LFO / Kbd Trig
Switch 20	C		Tempo LFO Sync
Switch 21	C		Keyboard LFO Retrigger
Switch 22	C		Noise / Ring Mod
Switch 23	C	Kbd Hold	VCO 1 Shape
Switch 24	C	Delay Feedback Mode	VCO 2 Shape

USING THE MPK49 WITH ROB PAPEN SYNTHS

Installing and loading the MIDI map files:

BLUE

Mac – Place the file labeled *MPK49_Blue.stp* in the Applications/Rob Papen/Blue/Blue ECS folder.

After starting Blue in your host software, click on 'Global'. At the bottom right of the **GLOBAL** page you will see **Ex. Con. Setup**. Select 'Load' and choose the *MPK49_Blue.stp* file. Select the Rob Papen Preset on your MPK49 and the controllers will be mapped to some of the most used functions. See the 'Blue' reference manual to change controller mappings to suit your own needs.

PC - Place the file labeled *MPK49_Blue.stp* into the "Blue\ECS" folder in your default VST folder. (Usually C:\Program Files\Steinberg\VstPlugins)

After starting Blue in your host software, click on 'Global'. At the bottom right of the **GLOBAL** page you will see **Ex. Con. Setup**. Select 'Load' and choose the *MPK49_Blue.stp* file. Select the Rob Papen Preset on your MPK49 and the controllers will be mapped to some of the most used functions. See the 'Blue' reference manual to change controller mappings to suit your own needs.

PREDATOR

Mac – Place the file labeled *MPK49-Predator.ecs* in the Applications/Rob Papen/Predator/ECS folder.

After starting Predator in your host software, click on the **ECS** button at the bottom right of the screen. Select 'Load ECS' and choose the *MPK49-Predator.ecs* file. Select the Rob Papen Preset on your MPK49 and the controllers will be mapped to some of the most used functions. See the 'Predator' reference manual to change controller mappings to suit your own needs.

PC – Place the file labeled *MPK49-Predator.ecs* into the Rob Papen\Predator\ECS folder in your default VST folder. (Usually C:\Program Files\Steinberg\VstPlugins)

After starting Predator in your host software, click on the **ECS** button at the bottom right of the screen. Select 'Load ECS' and choose the *MPK49-Predator.ecs* file. Select the Rob Papen Preset on your MPK49 and the controllers will be mapped to some of the most used functions. See the 'Predator' reference manual to change controller mappings to suit your own needs.

ALBINO3

Mac – Place the file labeled *MPK49_Albedo.MOD* on your computer. We suggest placing it in the Library/Application support/LinPlug folder

After starting Albino 3 in your host software, click on the **ECS** button at the bottom right of the screen. Select 'Load ECS' and choose the *MPK49_Albedo.MOD* file. Select the Rob Papen Preset on your MPK49 and the controllers will be mapped to some of the most used functions. See the 'Albino3' reference manual to change controller mappings to suit your own needs.

PC – Place the file labeled *MPK49_Albedo.MOD* on your computer. We suggest placing it in the Rob Papen\ECS folder in your default VST folder. (Usually C:\Program Files\Steinberg\VstPlugins)

After starting Albino 3 in your host software, click on the **ECS** button at the bottom right of the screen. Select 'Load ECS' and choose the *MPK49_Albedo.MOD* file. Select the Rob Papen Preset on your MPK49 and the controllers will be mapped to some of the most used functions. See the 'Albino3' reference manual to change controller mappings to suit your own needs.



AKAI MPK49 PRESET MAPPINGS

BANK	BLUE		PREDATOR		ALBINO 3		
					ANALOG	DIGITAL	NOISE
Fader 1	A	OSC Volume 1	Osc 1 waveform	osc1 waveform	Osc1 Wave Morph	Osc1 noise color	
Fader 2	A	OSC Volume 2	Osc 1 Volume	osc1 volume	osc1 volume	osc1 volume	
Fader 3	A	OSC Volume 3	Osc 2 waveform	osc2 waveform	Osc2 Wave Morph	Osc2 noise color	
Fader 4	A	OSC Volume 4	Osc 2 Volume	osc2 volume	osc2 volume	osc2 volume	
Fader 5	A	OSC Volume 5	Osc 3 waveform	osc3 waveform	Osc3 Wave Morph	Osc3 noise color	
Fader 6	A	OSC Volume 6	Osc 3 Volume	osc3 volume	osc3 volume	osc3 volume	
Fader 7	A	Filter A Freq	Osc 2FM/Ring Amt	osc4 waveform	Osc4 Wave Morph	Osc4 noise color	
Fader 8	A	Filter B Freq	Osc 3FM/Ring Amt	osc4 volume	osc4 volume	osc4 volume	
Knob 1	A	OSC Semi 1	Osc 1 Sym	osc1 symmetry	--	--	
Knob 2	A	OSC Semi 2	Osc 1 Sub	osc1 filter balance	osc1 filter balance	osc1 filter balance	
Knob 3	A	OSC Semi 3	Osc 2 Sym	osc2 symmetry	--	--	
Knob 4	A	OSC Semi 4	Osc 2 Sub	osc2 filter balance	osc2 filter balance	osc2 filter balance	
Knob 5	A	OSC Semi 5	Osc 3 Sym	Osc3 symmetry	--	--	
Knob 6	A	OSC Semi 6	Osc 3 Sub	Osc3 filter balance	Osc3 filter balance	Osc3 filter balance	
Knob 7	A	Filter A Q	Osc 2 Fine tune	Osc4 symmetry	--	--	
Knob 8	A	Filter B Q	Osc 3 Fine tune	Osc4 filter balance	Osc4 filter balance	Osc4 filter balance	
Switch 1	A		Osc 1 On/Off	osc1 on/off	osc1 on/off	osc1 on/off	
Switch 2	A		Osc 1 Free	osc1 free-run	osc1 free-run	osc1 free-run	
Switch 3	A		Osc 2 On/Off	osc2 on/off	osc2 on/off	osc2 on/off	
Switch 4	A		Osc 2 Sync	osc2 Sync	osc2 free-run	osc2 free-run	
Switch 5	A		Osc 3 On/Off	osc3 on/off	osc3 on/off	osc3 on/off	
Switch 6	A		Osc 3 Sync	osc3 free-run	osc3 free-run	osc3 free-run	
Switch 7	A		Osc 1->Filter enable	osc4 on/off	osc4 on/off	osc4 on/off	
Switch 8	A		Osc 2->Filter enable	osc4 Sync	osc4 free-run	osc4 free-run	
				SILK	CREAM	SCREAM	
Fader 9	B	Filter A Dist	Filter Cutoff	Filter 1 Cutoff	Filter 1 Cutoff	Filter 1 Cutoff	
Fader 10	B	Filter A Env	Filter Q	Filter 1 Res	Filter 1 Res	Filter 1 Res	
Fader 11	B	Filter B Dist	Filter Envelope	Filter 1 Saturation	Filter 1 Saturation	Filter 1 Saturation	
Fader 12	B	Filter B Env	F2 Cutoff	Filter 1 velocity	Filter 1 velocity	Filter 1 velocity	
Fader 13	B	Vol Env Attack	Filter Env Attack	Filter 1 Cutoff	Filter 1 Cutoff	Filter 1 Cutoff	
Fader 14	B	Vol Env Decay	Filter Env Decay	Filter 1 Res	Filter 1 Res	Filter 1 Res	
Fader 15	B	Vol Env Sustain	Filter Env Sustain	Filter 1 Saturation	Filter 1 Saturation	Filter 1 Saturation	
Fader 16	B	Vol Env Release	Filter Env Release	Filter 1 Velocity	Filter 1 Velocity	Filter 1 Velocity	
Knob 9	B	Filter A ENVAttack	Filter Velocity	Filter 1 Type	Filter 1 Type	Filter 1 Type	
Knob 10	B	Filter A ENVDecay	Filter Keytrack	Filter 1 Env	Filter 1 Env	Filter 1 Env	
Knob 11	B	Filter A ENVsustain	Filter Mod wheel	Filter 1 Pan	Filter 1 Pan	Filter 1 Pan	
Knob 12	B	Filter A ENVRelease	Filter LFO				
Knob 13	B	Filter B ENVAttack	Amp Attack	Filter 1 Type	Filter 1 Type	Filter 1 Type	
Knob 14	B	Filter B ENVDecay	Amp Decay	Filter 1 Env	Filter 1 Env	Filter 1 Env	
Knob 15	B	Filter B ENVsustain	Amp Sustain	Filter 1 Pan	Filter 1 Pan	Filter 1 Pan	
Knob 16	B	Filter B ENVRelease	Amp Release	1/2 bal	1/2 bal	1/2 bal	
Switch 9	B		Osc 1 On/Off	Env polarity	Env polarity	Env polarity	
Switch 10	B		Osc 1 Free				
Switch 11	B		Osc 2 On/Off				
Switch 12	B		Osc 2 Free				
Switch 13	B		Osc 3 On/Off	Env polarity	Env polarity	Env polarity	
Switch 14	B		Osc 3 Free				
Switch 15	B		Osc 1->Filter enable				
Switch 16	B		Osc 2->Filter enable				
Fader 17	C	OSC A Shape	Free Env 1 Amount	Filter Env 1 Attack			
Fader 18	C	OSC B Shape	Free Env 1 Amt control	Filter Env 1 Decay			
Fader 19	C	OSC C Shape	Free Env 2 Amount	Filter Env 1 Sustain			
Fader 20	C	OSC D Shape	Free Env 1 Vel-> Time	Filter Env 1 Release			
Fader 21	C	OSC E Shape	Free Env 1 Attack	Filter Env 2 Attack			
Fader 22	C	OSC F Shape	Free Env 1 Decay	Filter Env 2 Decay			
Fader 23	C	Filter A Pan	Free Env 1 Sustain	Filter Env 2 Sustain			
Fader 24	C	Filter B Pan	Free Env 1 Release	Filter Env 2 Release			
Knob 17	C	OSC A Feedback	Free Env 1 Amount	Amp Attack			
Knob 18	C	OSC B Feedback	Free Env 1 Amt control	Amp Decay			
Knob 19	C	OSC C Feedback	Free Env 2 Amount	Amp Sustain			
Knob 20	C	OSC D Feedback	Free Env 2 Vel-> Time	Amp Release			
Knob 21	C	OSC E Feedback	Free Env 2 Attack	Mod Attack			
Knob 22	C	OSC F Feedback	Free Env 2 Decay	Mod Decay			
Knob 23	C	Filter A Volume	Free Env 2 Sustain	Mod Sustain			
Knob 24	C	Filter B Volume	Free Env 2 Release	Mod Release			
Switch 17	C		Osc 1 On/Off				
Switch 18	C		Osc 1 Free				
Switch 19	C		Osc 2 On/Off				
Switch 20	C		Osc 2 Free				
Switch 21	C		Osc 3 On/Off				
Switch 22	C		Osc 3 Free				
Switch 23	C		Osc 1->Filter enable				
Switch 24	C		Osc 2->Filter enable				

USING THE MPK49 WITH STYLUS RMX



AKAI MPK49 PRESET MAPPINGS

- To use the MPK49 with Stylus RMX you will need to copy the **Akai** folder from the **Spectrasonics-StylusRMX MIDI Templates** folder on the CD-ROM to the following folder on your computer.
SAGE/Stylus RMX/Patches/MIDI Learn
- After you have copied the folder, load the Factory Preset on the MPK49 named **SpectRMX**.
- Open your host software and open an instance of Stylus RMX.
- Go to the lower right hand corner of the Stylus RMX interface and select the disk icon.
- In the disk icon menu select **MIDI Learn** and then select **Load Template**.
- Navigate to the **Akai** folder and choose the Spectrasonics Stylus RMX template.

BANK		STYLUS RMX
Fader 1	A	Mixer Level 1
Fader 2	A	Mixer Level 2
Fader 3	A	Mixer Level 3
Fader 4	A	Mixer Level 4
Fader 5	A	Mixer Level 5
Fader 6	A	Mixer Level 6
Fader 7	A	Mixer Level 7
Fader 8	A	Mixer Level 8
Knob 1	A	Mixer Pan 1
Knob 2	A	Mixer Pan 2
Knob 3	A	Mixer Pan 3
Knob 4	A	Mixer Pan 4
Knob 5	A	Mixer Pan 5
Knob 6	A	Mixer Pan 6
Knob 7	A	Mixer Pan 7
Knob 8	A	Mixer Pan 8
Switch 1	A	Play/Stop Part 1
Switch 2	A	Play/Stop Part 2
Switch 3	A	Play/Stop Part 3
Switch 4	A	Play/Stop Part 4
Switch 5	A	Play/Stop Part 5
Switch 6	A	Play/Stop Part 6
Switch 7	A	Play/Stop Part 7
Switch 8	A	Play/Stop Part 8
Fader 9	B	Master Tone 1
Fader 10	B	Master Tone 2
Fader 11	B	Master Tone 3
Fader 12	B	Master Tone 4
Fader 13	B	Master Tone 5
Fader 14	B	Master Tone 6
Fader 15	B	Master Tone 7
Fader 16	B	Master Tone 8
Knob 9	B	Master Emph 1
Knob 10	B	Master Emph 2
Knob 11	B	Master Emph 3
Knob 12	B	Master Emph 4
Knob 13	B	Master Emph 5
Knob 14	B	Master Emph 6
Knob 15	B	Master Emph 7
Knob 16	B	Master Emph 8
Switch 9	B	Mute Part 1
Switch 10	B	Mute Part 2
Switch 11	B	Mute Part 3
Switch 12	B	Mute Part 4
Switch 13	B	Mute Part 5
Switch 14	B	Mute Part 6
Switch 15	B	Mute Part 7
Switch 16	B	Mute Part 8
Fader 17	C	AUX 1 Part 1
Fader 18	C	AUX 1 Part 2
Fader 19	C	AUX 1 Part 3
Fader 20	C	AUX 1 Part 4
Fader 21	C	AUX 1 Part 5
Fader 22	C	AUX 1 Part 6
Fader 23	C	AUX 1 Part 7
Fader 24	C	AUX 1 Part 8
Knob 17	C	AUX 2 Part 1
Knob 18	C	AUX 2 Part 2
Knob 19	C	AUX 2 Part 3
Knob 20	C	AUX 2 Part 4
Knob 21	C	AUX 2 Part 5
Knob 22	C	AUX 2 Part 6
Knob 23	C	AUX 2 Part 7
Knob 24	C	AUX 2 Part 8
Switch 17	C	Solo Part 1
Switch 18	C	Solo Part 2
Switch 19	C	Solo Part 3
Switch 20	C	Solo Part 4
Switch 21	C	Solo Part 5
Switch 22	C	Solo Part 6
Switch 23	C	Solo Part 7
Switch 24	C	Solo Part 8
Mod Wheel		Master Volume (Inv)

USING THE MPK49 WITH VIRSYN SYNTHS



AKAI MPK49 PRESET MAPPINGS

TERA 3

Mac – Place the file in the **Virsyn / Tera** folder labeled *VSMIDI.vsm* in the **Applications / Tera3** folder.

When you start up Tera it will automatically have the right mappings for the MPK49. Select the VirSyn Preset on your MPK49 and the controllers will be mapped to some of the most used functions.

POSEIDON

Mac – Place the file in the **Virsyn / Poseidon** folder labeled *VSMIDI.vsm* in the **Applications / Poseidon** folder

When you start up Poseidon, it will automatically have the right mappings for the MPK49. Select the VirSyn Preset on your MPK49 and the controllers will be mapped to some of the most used functions.

BANK	POSEIDON	TERA 3	
Fader 1	A	Wave Env - Attack	Filter 1 - cutoff
Fader 2	A	Wave Env - Decay	Filter 1 - reso.
Fader 3	A	Wave Env - Sustain	Filter 2 - cutoff
Fader 4	A	Wave Env - Release	Filter 2 - reso.
Fader 5	A	Spect - Residual	TerFilter - cutoff
Fader 6	A	Spect - Spread	TerFilter - morph
Fader 7	A	Spect - Blur Level	TerFilter - reso.
Fader 8	A	Spect - Blur Freq.	Volume
Knob 1	A	Wave - Position	Mixer 1
Knob 2	A	Wave - Time	Mixer 2
Knob 3	A	Wave - Loopstart	Mixer 3
Knob 4	A	Wave - Length	Mixer 4
Knob 5	A	Spect - Partial	Mixer 5
Knob 6	A	Spect - Bright	Overdrive
Knob 7	A	Spect - Level	X-fader
Knob 8	A	Spect - ctrl amt.	Pan
Switch 1	A		
Switch 2	A		
Switch 3	A		
Switch 4	A		
Switch 5	A		
Switch 6	A		
Switch 7	A		
Switch 8	A		
Fader 9	B	Filter Env - Attack	wave delay - cutoff
Fader 10	B	Filter Env - Decay	wave delay - tune
Fader 11	B	Filter Env - Sustain	wave delay - level
Fader 12	B	Filter Env - Release	wave delay - feedback
Fader 13	B	Amp Env - Attack	Spect.OSC - Detune
Fader 14	B	Amp Env - Decay	Spect.OSC - Spec.1
Fader 15	B	Amp Env - Sustain	Spect.OSC - Spec.2
Fader 16	B	Amp Env - Release	Spect.OSC - Morph
Knob 9	B	Filter Cutoff	OSC1 - Tune
Knob 10	B	Filter Slope	OSC1 - Wave Mod.
Knob 11	B	Filter Reso.	OSC1 - Spread
Knob 12	B	Filter Width	OSC2 - Tune
Knob 13	B	Pan Rate	OSC2 - Wave Mod.
Knob 14	B	Pan Var.	OSC2 - FM Index
Knob 15	B	Phs Var	OSC3 - Tune
Knob 16	B	Pan Depth	OSC3 - FM Index
Switch 9	B		
Switch 10	B		
Switch 11	B		
Switch 12	B		
Switch 13	B		
Switch 14	B		
Switch 15	B		
Switch 16	B		
Fader 17	C	LFO 1 Rate	LFO Rate 1
Fader 18	C	LFO 2 Rate	LFO Rate 2
Fader 19	C	Glide Time	LFO Rate 3
Fader 20	C	Wave Key follow	LFO Rate 4
Fader 21	C	Wave Ctrl Amt	ENV Time
Fader 22	C	Wave Env amt	
Fader 23	C	EQ Low Gain	
Fader 24	C	EQ High Gain	
Knob 17	C	Semi tone	Filter 1 - Track
Knob 18	C	Fine tune	Filter 1 - Drive
Knob 19	C	Ensemble	Filter 1 - Shift
Knob 20	C	Filter Key follow	Filter 2 - Track
Knob 21	C	Filter Ctrl Amt	Filter 2 - Drive
Knob 22	C	Filter Env amt	Filter 2 - Shift
Knob 23	C	EQ Low Freq.	
Knob 24	C	EQ High Freq.	
Switch 17	C		
Switch 18	C		
Switch 19	C		
Switch 20	C		
Switch 21	C		
Switch 22	C		
Switch 23	C		
Switch 24	C		

USING THE MPK49 WITH ARKAOS VJ



Arkaos is a visual effects program that allows you to trigger video, still and flash clips from a MIDI source. This program and other VJ applications are actually very well suited for using the MPK49.

This preset is not specific to Arkaos but is designed to allow you to quickly customize your Arkaos presets.

Keyboard – The keyboard is set to the COMMON MIDI channel and has a range from C1 – to C5 on Arkaos. The keyboard is well suited for momentarily triggering video clips or effects. You can use the keyboards ARPEGGIATOR and LATCH function to automatically have it cycle through a range of clips.

Pads – The pads have been programmed to be latched or toggled on and off. This allows you to assign backgrounds, overlay clips or fx that will run until you hit the pad a second time to turn it off. You can use the NOTE REPEAT function to retrigger your video at timed intervals. By playing with the GATE TIME on NOTE REPEAT you can set how long the note stays on before retriggering. By setting a short GATE TIME the clip or effect will flash on and then off quickly. With a long GATE TIME of 99, the note off and note on are very close so it looks like the clip is looping.

Controllers – the controllers are set from 1 – 72. They are numbered left to right, top to bottom. i.e. Controller Bank A Knobs 1-8 are = MIDI CC 1-8, the sliders are 9-16, the switches are 17-24.

The MPK49 makes a great VJ controller. Dig in and discover the possibilities.

REVISION 1.1

Free Manuals Download Website

<http://myh66.com>

<http://usermanuals.us>

<http://www.somanuals.com>

<http://www.4manuals.cc>

<http://www.manual-lib.com>

<http://www.404manual.com>

<http://www.luxmanual.com>

<http://aubethermostatmanual.com>

Golf course search by state

<http://golfingnear.com>

Email search by domain

<http://emailbydomain.com>

Auto manuals search

<http://auto.somanuals.com>

TV manuals search

<http://tv.somanuals.com>