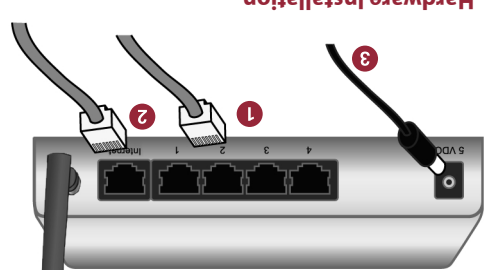


Asanté Makes Networking Simple
Setting up your router requires three basic steps:

1. Install your hardware.
2. Determine the TCP/IP settings for your specific computer following the instructions provided for your operating system.
3. Configure your router.

Tip: Record your information and save it for future reference. You will need to have these settings if you ever change routers, computers or service plans.

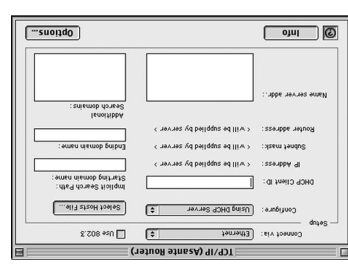


Hardware Installation
Turn off the power to your computers, modem and router, then follow these steps to connect the router to your network:

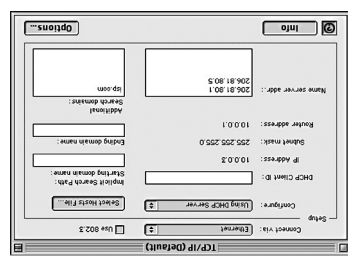
1. Connect an Ethernet cable from your computer's Ethernet port to one of the LAN ports (numbered 1–4) on the router.
2. Connect an Ethernet cable from your cable or DSL modem to the router's WAN port.
3. Connect the power cord to the router then turn on your computers and modem.

Tip: FR1100 Series routers support Auto-Uplink. If you need to connect more than four computers to the router, you can uplink a 10/100 Fast Ethernet switch (preferred) or hub using an Ethernet cable to any LAN port on the router. FR1100 Series routers support up to 253 computers and network devices.

Determining Network Settings
Follow the Computer Configuration steps for your computer's operating system.



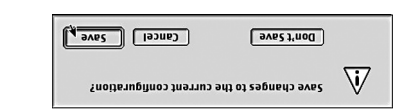
3. The DHCP screen before receiving a dynamic IP address from the Asanté router looks as follows:



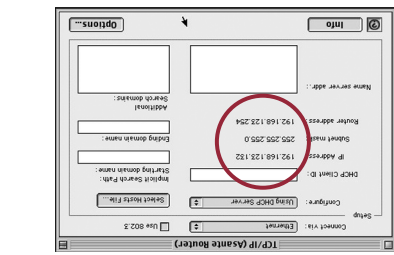
2. In the **Connect Via** drop-down list, select your Ethernet adapter. In **Configure**, select **Using DHCP Server**.

1. From the Apple menu, open your computer's TCP/IP control panel. The following steps explain how to determine your current network settings and set up your computer so that it can be automatically configured by the router's DHCP (dynamic host configuration protocol) feature.

The TCP/IP configuration of your computer is now complete. Repeat these steps to configure additional Mac OS 8 or 9 computers you wish to add to the router.



5. Close the TCP/IP control panel and Save the settings.



4. The DHCP screen after receiving a dynamic IP address from the Asanté router looks as follows:

Apple Mac OS 8 and 9 (See reverse for Mac OS X) Computer Configuration

Router Configuration All Operating Systems

The router must be configured to match your Internet service. If you do not know your Internet connection configuration, please contact your Internet Service Provider (ISP). By default, the router is pre-configured with these settings:

- Automatically set IP addresses for computers on your LAN (connected to the router's ports 1–4). The router acts as a server for dynamic host configuration protocol (DHCP) and assigns IP addresses in the range 192.168.123.100 through 192.168.123.199
- The default LAN IP address for the router is 192.168.123.254 with a subnet mask of 255.255.255.0
- The Internet service connected to the router's WAN port uses a dynamic IP address

Note: To configure the router, you will need to use the information you collected when determining network settings (Computer Configuration) for your operating system.

1. Start your browser and type **http://192.168.123.254** in the location field. Press **Enter**.
2. Log in to the router using the default password ("admin") and click the **Log in** button.
3. From the top navigation bar, click on the **Wizard** link.
4. Follow the on-screen instructions.
5. Fill in the network settings using the information gathered during Computer Configuration.
6. When you are finished, click **Save**. You will be prompted to restart your router for changes to take effect. Click the **Restart Router** button and follow the prompts. Your router will be restarted and you will have to log in again.
7. Restart all the computers on your network.
8. To verify your Internet connection, try connecting to the www.asante.com website from your web browser.

The basic configuration of your Asanté router is now complete. See the User's Manual for additional information on advanced settings.



Thank you for purchasing an Asanté FriendlyNET FR1100 Series router. This router will allow you to share your high-speed Internet connection with other computers on your network. To ensure smooth operation, you will need to configure the router to match your current Internet Service Provider (ISP).

System Requirements
Before you begin, please verify that you have the following items:

- Valid Internet connection with user name and password.
- Broadband (cable or DSL) modem with a 10BaseT port (PCI-based modems are not supported).
- Network connection for each computer – a 10/100 Fast Ethernet adapter or built-in 10/100 Fast Ethernet port (RJ-45). AsantéFast 10/100 or FriendlyNET 10/100 PCI recommended.
- Network cable from the router to each computer. Unshielded twisted pair (UTP) Category 5 cable is required.
- Supported operating systems:
 - Apple Mac OS (8, 9 and X)
 - Microsoft Windows (98, 2000, NT and XP)
 - Linux/UNIX
- TCP/IP network protocol must be configured for each computer (refer to computer configuration on reverse). Each client must also be configured to accept an IP address from a DHCP server.
- You will also need a web browser to configure the router. Microsoft Internet Explorer or Netscape Communicator version 4 or later is required.



FR1100 Series Routers



If you have the FriendlyNET FR1104-G wireless router, these items are optional:

- Wireless network connection for each computer. A built-in 802.11b/g (Airport, Wi-Fi) or adapter for each computer. FriendlyNET AeroLAN adapters recommended.

Incompatibilities
Cable or DSL modems using USB or Firewire connections, asymmetrical dual media connections, Home PNA or any other non-Ethernet compatible communication devices are not compatible with the FriendlyNET FR1100 Series routers.



Computer Configuration

Apple Mac OS X

The following steps explain how to determine your current network settings and set up your computer so that it can be automatically configured by the router's DHCP (dynamic host configuration protocol) feature.

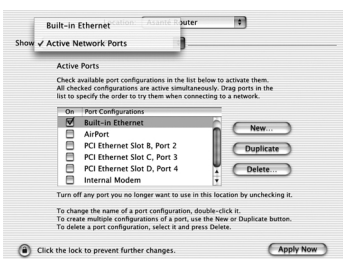
1. Go to **System Preferences** in your Dock.



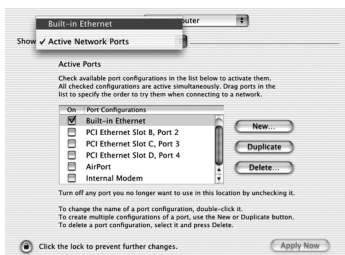
2. Select **Network** from the System Preference panel.



3. Select **Show: Active Network Ports** and select the Ethernet port that is connected to your Asanté router. Uncheck any unused ports. Click **Apply Now**.

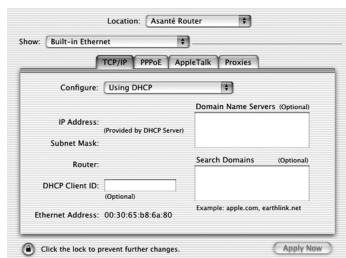


4. Select the connected Ethernet port in **Show**.

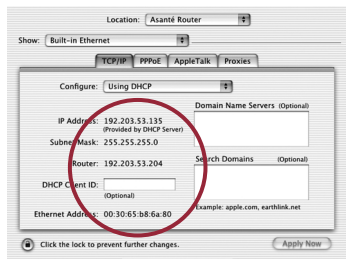


5. Be sure that the TCP/IP tab is selected. Now select **Configure: Using DHCP**. You will receive the IP address automatically from your DHCP server.

Before receiving the IP address from the router's DHCP server, your screen will look like this:



After receiving the IP address from the router's DHCP server, your screen will look like this:



The TCP/IP configuration of your computer is now complete. Repeat these steps to configure additional Macs running OS X that you wish to add to the router.

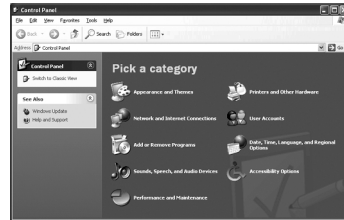
Computer Configuration

Microsoft Windows XP

The following steps explain how to determine your current network settings and set up your computer so that it can be automatically configured by the router's DHCP (dynamic host configuration protocol) feature.

Note: Keep your Windows CD-ROM handy. You may be asked to insert it so that Windows can copy necessary files.

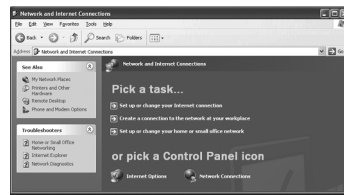
1. From the **Start** button, select **Settings/Control Panel**.



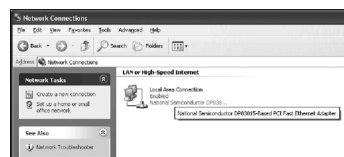
2. Click on **Network and Internet Connections**.



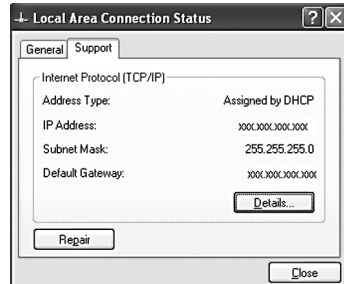
3. Click the **Network Connections** icon.



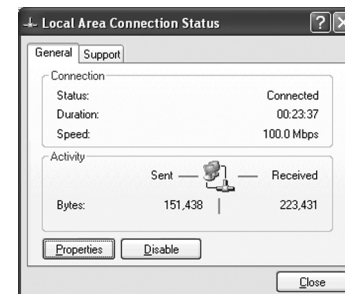
4. Double-click on the network.



5. Under the **Support** tab, click on the **Details...** button and record your IP settings for future reference.



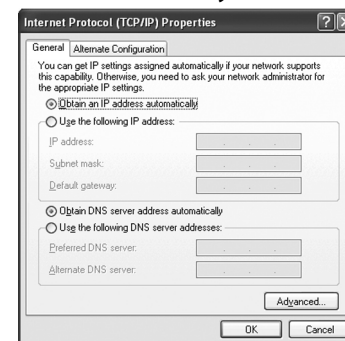
6. Under the **General** tab, click the **Properties** button.



7. Select the **Internet Protocol (TCP/IP)** and click the **Properties** button.



8. Select **Obtain an IP address automatically** and **Obtain DNS server address automatically**.



9. Click **OK** and restart your computer.

The TCP/IP configuration of your computer is now complete. Repeat these steps to configure additional PCs running Windows XP on your network.

Computer Configuration

Microsoft Windows 95/98/Me

The following steps explain how to determine your current TCP/IP settings and configure them to use DHCP.

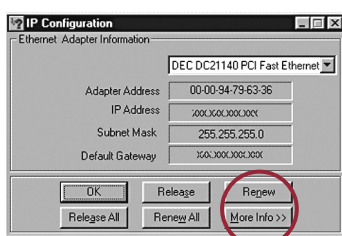
Note: Keep your Windows CD handy. You may be asked to insert it so that Windows can copy necessary files.

1. From the Windows **Start** button, choose **Run**. In the dialog box, type **winipcfg** and click **OK**.



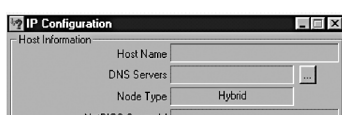
2. Choose your computer's Ethernet adapter card from the options available in the drop-down list.

Tip: The PPP setting is usually for your dial-up analog modem. Don't choose this selection.



3. Expand this dialog box by clicking on the **More Info >>** button.

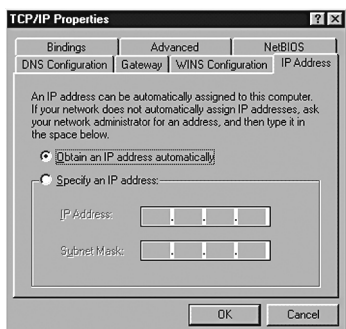
Tip: Next to the DNS Servers field, click the button to show the Secondary DNS (if available).



4. From the Windows **Start** button, choose **Settings** and select **Control Panel**. Double-click the **Network** icon.

5. In the **Configuration** tab, highlight the **TCP/IP** protocol line associated with your network card adapter.

6. Click **Properties** to open the TCP/IP Properties dialog. Click the **IP Address** tab. Select **Obtain an IP address automatically**. Click **OK**.



7. Click **OK** again. Windows will begin copying files to your computer. Click **Yes** to restart your computer with the new settings.

The TCP/IP configuration of your computer is now complete. Repeat these steps to configure additional PCs running Windows 95/98/Me on your network.

Computer Configuration

Microsoft Windows 2000/NT

The following steps explain how to determine your current TCP/IP settings and configure them to use DHCP.

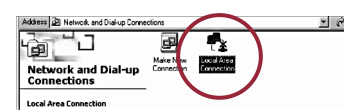
Note: Keep your Windows CD handy. You may be asked to insert it so that Windows can copy necessary files.

1. From the Windows **Start** button, choose **Program > Accessories > Command Prompt**.

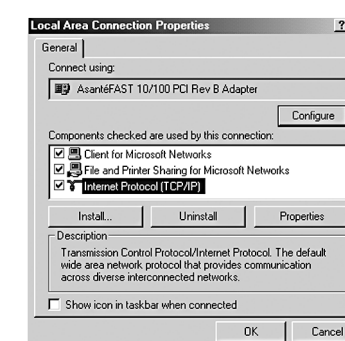
2. At the command line, type the command **ipconfig/all** and press **Enter**.



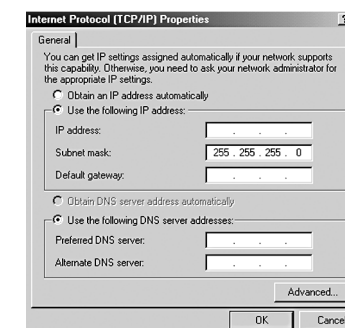
3. From the **Start** Button, select **Control Panel/Network and Dial-Up Connections**. Double-click on the **Local Area Connection**.



4. Under the **General** tab, highlight the **Internet Options (TCP/IP)** and click the **Properties** button.



5. Select **Obtain an IP address automatically** and **Obtain DNS server address automatically**. Click **OK** when finished. You may be prompted to restart your computer.



The TCP/IP configuration of your computer is now complete. Repeat these steps to configure additional PCs running Windows 2000/NT on your network.

Free Manuals Download Website

<http://myh66.com>

<http://usermanuals.us>

<http://www.somanuals.com>

<http://www.4manuals.cc>

<http://www.manual-lib.com>

<http://www.404manual.com>

<http://www.luxmanual.com>

<http://aubethermostatmanual.com>

Golf course search by state

<http://golfingnear.com>

Email search by domain

<http://emailbydomain.com>

Auto manuals search

<http://auto.somanuals.com>

TV manuals search

<http://tv.somanuals.com>