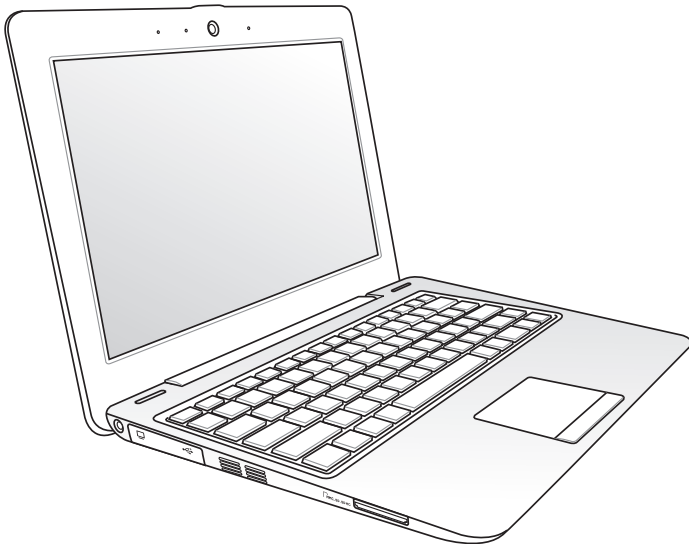


E5254

Eee PC User Manual

Windows® 7 Edition
Eee PC 1008P Series



15G06Q209001

Table of Contents

Table of Contents	ii
About This User's Manual	iv
Notes for This Manual	iv
Safety Precautions.....	v
Transportation Precautions	vi
Charging Your Batteries.....	vii
Airplane Precautions.....	vii

Chapter 1: Knowing the Parts

Top Side	1-2
Bottom Side.....	1-6
Right Side	1-8
Left Side	1-9
Rear Side.....	1-10
Keyboard Usage.....	1-11
Special Function Keys	1-11
Touchpad Usage	1-13
Multi-finger gesture input.....	1-13

Chapter 2: Getting Started

Installing and uninstalling the battery pack.....	2-2
Powering on your Eee PC	2-4
First-time Startup	2-5
Desktop.....	2-7
Network Connection.....	2-8
Configuring a wireless network connection.....	2-8
Local Area Network.....	2-9
Browsing web pages.....	2-12

Chapter 3: Using the Eee PC

ASUS Update.....	3-2
Updating the BIOS through the Internet	3-2
Updating the BIOS through a BIOS file.....	3-3
Bluetooth Connection (on selected models)	3-4

Super Hybrid Engine	3-6
Super Hybrid Engine Modes.....	3-6
Eee Docking	3-7
Eee Amuse	3-7
Eee Sharing	3-8
Eee Xperience	3-8
Eee Tools	3-9
Boingo (on selected models)	3-9
Digital Zoom Control (on selected models)	3-10
Function keys	3-10
Microsoft® Office Trial.....	3-12

Chapter 4: Support DVD & System Recovery

Support DVD information	4-2
Running the support DVD.....	4-2
Drivers menu.....	4-3
Utilities menu.....	4-3
Contact.....	4-3
Other information	4-3
System Recovery.....	4-4
Using Recovery Partition (F9 Recovery)	4-4
Using the Support DVD.....	4-4
Boot Booster.....	4-6

Appendix

Declarations and Safety Statements	A-2
Copyright Information.....	A-12
Limitation of Liability	A-13
Service and Support.....	A-13

About This User's Manual

You are reading the Eee PC User's Manual. This User's Manual provides information regarding the various components in the Eee PC and how to use them. The following are major sections of this User's Manual:

- 1. Knowing the Parts**
Provides information on the Eee PC's components.
- 2. Getting Started**
Provides information on getting started with the Eee PC.
- 3. Using the Eee PC**
Provides information on using the Eee PC's utilities.
- 4. Support DVD and System Recovery**
Gives you information on support DVD contents and system recovery.
- 5. Appendix**
Gives you safety statements.



The actual bundled operating system and applications differ by models and territories. There may be differences between your Eee PC and the pictures shown in this manual. Please accept your Eee PC as being correct.

Notes for This Manual

A few notes and warnings are used throughout this guide, allowing you to complete certain tasks safely and effectively. These notes have different degrees of importance as follows:



WARNING! Important information that must be followed for safe operation.



IMPORTANT! Vital information that must be followed to prevent damage to data, components, or persons.



TIP: Tips for completing tasks.



NOTE: Information for special situations.

Safety Precautions

The following safety precautions will increase the life of the Eee PC. Follow all precautions and instructions. Except as described in this manual, refer all servicing to qualified personnel. Do not use damaged power cords, accessories, or other peripherals. Do not use strong solvents such as thinners, benzene, or other chemicals on or near the surface.



Disconnect the AC power before cleaning. Wipe the Eee PC using a clean cellulose sponge or chamois cloth dampened with a solution of nonabrasive detergent and a few drops of warm water and remove any extra moisture with a dry cloth.



DO NOT place on uneven or unstable work surfaces. Seek servicing if the casing has been damaged.



DO NOT place or drop objects on top and do not shove any foreign objects into the Eee PC.



DO NOT expose to dirty or dusty environments. DO NOT operate during a gas leak.



DO NOT expose to strong magnetic or electrical fields.



DO NOT press or touch the display panel. Do not place together with small items that may scratch or enter the Eee PC.



DO NOT expose to or use near liquids, rain, or moisture. DO NOT use the modem during electrical storms.



DO NOT leave the Eee PC on your lap or any part of the body to prevent discomfort or injury from heat exposure.



Battery safety warning: DO NOT throw the battery in fire. DO NOT short circuit the contacts. DO NOT disassemble the battery.



SAFE TEMP: This Eee PC should only be used in environments with ambient temperatures between 5°C (41°F) and 35°C (95°F)



INPUT RATING: Refer to the rating label on the bottom of the Eee PC and be sure that your power adapter complies with the rating.



DO NOT carry or cover a Eee PC that is powered ON with any materials that will reduce air circulation such as a carrying bag.



Incorrect installation of battery may cause explosion and damage the Eee PC.



DO NOT throw the Eee PC in municipal waste. This product has been designed to enable proper reuse of parts and recycling. The symbol of the crossed out wheeled bin indicates that the product (electrical, electronic equipment and mercury-containing button cell battery) should not be placed in municipal waste. Check local regulations for disposal of electronic products.



DO NOT throw the battery in municipal waste. The symbol of the crossed out wheeled bin indicates that the battery should not be placed in municipal waste.

Transportation Precautions

To prepare your Eee PC for transport, you should turn it OFF and **disconnect all external peripherals to prevent damage to the connectors.** The hard disk drive's head retracts when the power is turned OFF to prevent scratching of the hard disk surface during transport. **Therefore, you should not transport your Eee PC while the power is still ON.** Close the display panel to protect the keyboard and display panel.

The Eee PC's surface is easily dulled if not properly cared for. Be careful not to rub or scrape surfaces when transporting your Eee PC. You can put your Eee PC in a carrying case for protection from dirt, water, shock, and scratches.

Charging Your Batteries

If you intend to use battery power, be sure to fully charge your battery pack before going on long trips. Remember that the power adapter charges the battery pack as long as it is plugged into the computer and an AC power source. Be aware that it takes much longer to charge the battery pack when the Eee PC is in use.

Remember to fully charge the battery (8 hours or more) before first use and whenever it is depleted to prolong battery life. The battery reaches its maximum capacity after a few full charging and discharging cycles.

Airplane Precautions

Contact your airline if you want to use the Eee PC on the airplane. Most airlines have restrictions for using electronic devices. Most airlines allow electronic use only between and not during takeoffs and landings.



There are three main types of airport security devices: X-ray machines (used on items placed on conveyor belts), magnetic detectors (used on people walking through security checks), and magnetic wands (hand-held devices used on people or individual items). You can send your Eee PC and diskettes through airport X-ray machines. However, it is recommended that you do not send your Eee PC or diskettes through airport magnetic detectors or expose them to magnetic wands.

Top Side

Bottom Side

Right Side

Left Side

Rear Side

Keyboard Usage

Touchpad Usage

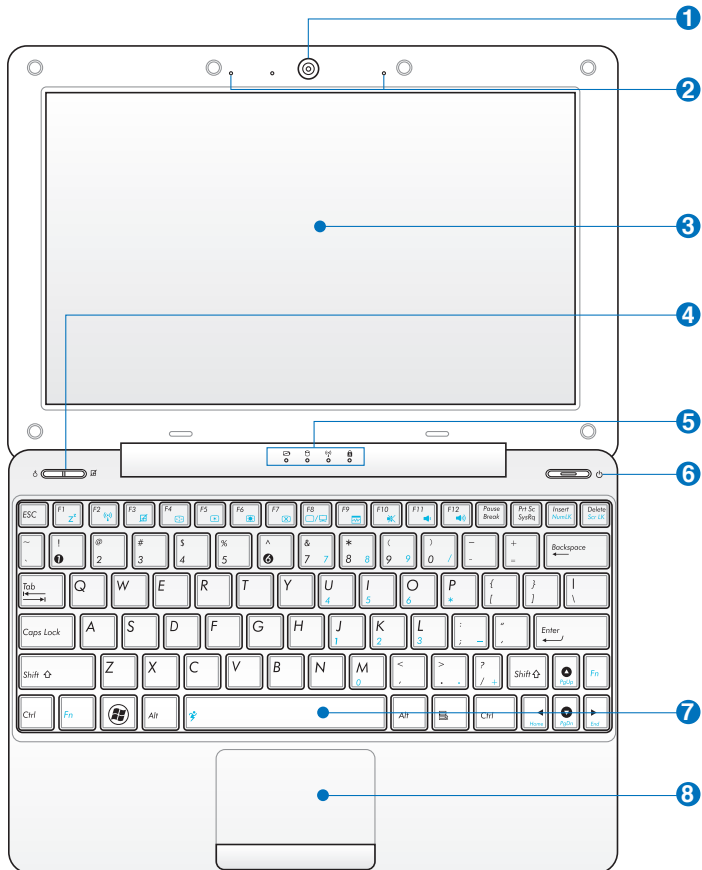
Knowing the Parts **1**

Top Side

Refer to the diagram below to identify the components on this side of the Eee PC.



The top side may vary in appearance depending on model.



The keyboard differs for each territory.

1  **Built-in Camera**

2  **Array Microphone (Built-in)**

The built-in array microphone is more clear and echo-free compared with traditional single microphones.

3  **Display Panel**



The display resolution supports up to 1024x600 pixels only under Win7 OS. Applications that require higher resolution support may not function normally.

4 **Instant keys**



**Express Gate Button / Super Hybrid Power button
(on selected models)**

When the Eee PC is turned off, pressing this button will launch Express Gate. Express Gate is an ASUS exclusive OS that provides you with quick access to the Internet and key applications without entering the Windows® OS.



Under the Windows OS, this button functions as the Super Hybrid Power button. The button toggles power savings between various power saving modes. You can also control the function by press **<Fn> + <Space Bar>**.



Touchpad Off key

Toggles the touchpad ON/OFF. You can also turn on/off the function by pressing **<Fn> + <F3>**.

(Continued on the next page)



Status Indicators

Battery Charge Indicator

The battery charge indicator (LED) shows the battery charging status as follows:

Powered ON

	With Adapter	Without Adapter
High battery power (95%–100%)	Green ON	Off
Medium battery power (11%–94%)	Orange ON	Off
Low battery power (0%–10%)	Orange Blinking	Orange Blinking

Powered OFF

	With Adapter	Without Adapter
High battery power (95%–100%)	Green ON	Off
Medium battery power (11%–94%)	Orange ON	Off
Low battery power (0%–10%)	Orange Blinking	Off



Hard Disk Drive (HDD) Indicator

The hard disk drive indicator blinks when data is written to or read from the disk drive.



Wireless/Bluetooth Indicator (Bluetooth on selected models)

This is only applicable on models with built-in wireless LAN/Bluetooth. When the built-in wireless LAN/Bluetooth is enabled, this indicator lights.



Capital Lock Indicator

Indicates that capital lock [Caps Lock] is activated when lighted.

6  **Power Switch**

The power switch allows powering ON and OFF the Eee PC and recovering from STR. Press the switch once to turn ON and hold it to turn OFF the Eee PC. The power switch only works when the display panel is opened.

 **Power Indicator**

The power indicator lights when the Eee PC is turned ON and blinks slowly when the Eee PC is in the Save-to-RAM (Suspend) mode. This indicator is OFF when the Eee PC is turned OFF.

7  **Keyboard**

The keyboard provides keys with comfortable travel (depth at which the keys can be depressed) and palm rest for both hands.



The keyboard differs depending on model.

8  **Touchpad and Buttons**

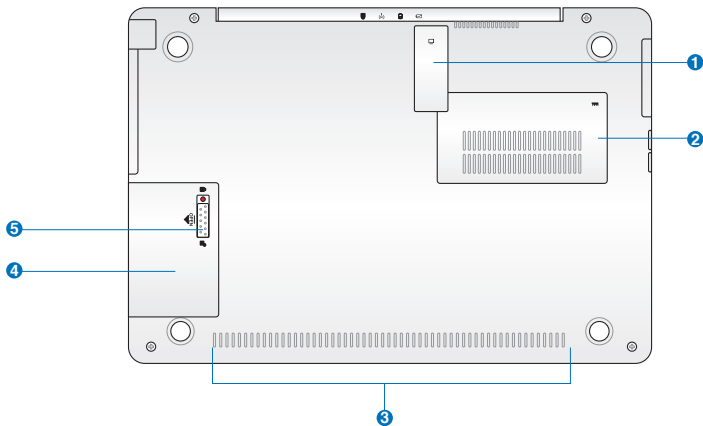
The touchpad and its buttons comprises a pointing device that provides the same functions as a desktop mouse.

Bottom Side

Refer to the diagram below to identify the components on this side of the Eee PC.



The bottom side may vary in appearance depending on model.



The bottom of the Eee PC can get very hot. Be careful when handling the Eee PC while it is in operation or recently been in operation. High temperatures are normal during charging or operation. DO NOT use on soft surfaces such as beds or sofas, which may block the vents. **DO NOT PUT THE Eee PC ON YOUR LAP OR OTHER PARTS OF THE BODY TO AVOID INJURY FROM THE HEAT.**

1

VGA door

The VGA door is for the installation of a VGA dongle (optional).

2 

Memory Compartment

The memory module is secured in a dedicated compartment.

3 **Audio Speaker System**

The built-in stereo speaker system allows you to hear audio without additional attachments. The multimedia sound system features an integrated digital audio controller that produces rich, vibrant sound (results improved with external stereo headphones or speakers). Audio features are software controlled.

4 **Battery Pack**

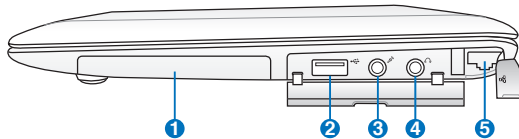
The battery pack is automatically charged when connected to an AC power source and maintains power to the Eee PC when AC power is not connected. This allows use when moving temporarily between locations. Battery time varies by usage and by the specifications for this Eee PC. The battery pack cannot be disassembled and must be purchased as a single unit.





5 **Battery Lock - Manual**

The manual battery lock is used to keep the battery pack secured. Move the manual lock to the unlocked position to insert or remove the battery pack. Move the manual lock to the locked position after inserting the battery pack.

Right Side

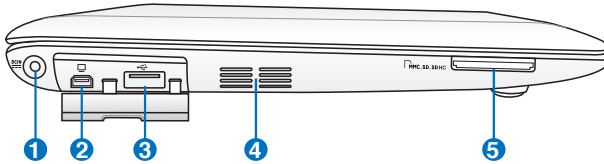
Refer to the diagram below to identify the components on this side of the Eee PC.



- 1** **Battery Compartment Cover**
Remove the battery compartment cover before installing or uninstalling the battery pack.
- 2**  **USB Port (2.0/1.1)**
The USB (Universal Serial Bus) port is compatible with USB 2.0 or USB 1.1 devices such as keyboards, pointing devices, cameras, and storage devices, connected in a series up to 12Mbps/sec (USB 1.1) and 480Mbps/sec (USB 2.0). Also, the USB supports hot-swapping function.
- 3**  **Microphone Jack**
The microphone jack is designed to connect the microphone used for Skype, voice narrations, or simple audio recordings.
- 4**  **Headphone Output Jack**
The 1/8" stereo headphone jack (3.5mm) connects the Eee PC's audio out signal to amplified speakers or headphones. Using this jack automatically disables the built-in speakers.
- 5**  **LAN Port**
The eight-pin RJ-45 LAN port (10/100M bit) supports a standard Ethernet cable for connection to a local network. The built-in connector allows convenient use without additional adapters.

Left Side

Refer to the diagram below to identify the components on this side of the Eee PC.



1 Power (DC) Input

The supplied power adapter converts AC power to DC power for use with this jack. Power supplied through this jack supplies power to the Eee PC and charges the internal battery pack. To prevent damage to the Eee PC and battery pack, always use the supplied power adapter.



CAUTION: MAY BECOME WARM TO HOT WHEN IN USE. BE SURE NOT TO COVER THE ADAPTER AND KEEP IT AWAY FROM YOUR BODY.

2 Mini VGA Connector

The mini VGA connector is for the VGA dongle to connect to a standard VGA-compatible device such as a monitor or projector to allow viewing on a larger external display.

3 USB Port (2.0/1.1)

4 Air Vents

The air vents allow cool air to enter and warm air to exit the Eee PC.



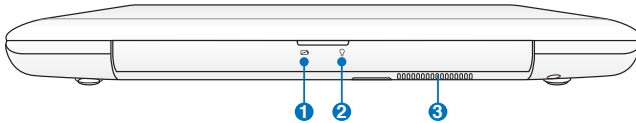
Ensure that paper, books, clothing, cables, or other objects do not block any of the air vents or else overheating may occur.

5 Memory Card Slot

The built-in memory card reader can read SD/SDHC/MMC cards.

Rear Side

Refer to the diagram below to identify the components on this side of the Eee PC.



1  **Battery Charge Indicator**

The battery charge indicator (LED) shows the status of the battery's power. Refer to the LED status table on pages 1-3 to 1-4.

2  **Power Indicator**

The power indicator lights when the Eee PC is turned ON and blinks slowly when the Eee PC is in the Save-to-RAM (Suspend) mode. This indicator is OFF when the Eee PC is turned OFF.

3 **Air Vents**

The air vents allow cool air to enter and warm air to exit the Eee PC.



Ensure that paper, books, clothing, cables, or other objects do not block any of the air vents or else overheating may occur.

Keyboard Usage

Special Function Keys

The following defines the colored hot keys on the Eee PC's keyboard. The colored commands can only be accessed by first pressing and holding the function key while pressing a key with a colored command. Some function icons appear in the Notification area after activation.



The Hot Key locations on the function keys may vary depending on model but the functions should remain the same. Follow the icons whenever your hot key locations do not match the manual.



Z² Icon (F1): Places the Eee PC in suspend mode (Save-to-RAM).



Radio Tower (F2) (Wireless Models Only): Toggles the internal wireless LAN or Bluetooth (on selected models) ON or OFF with an on-screen-display. When enabled, the corresponding wireless indicator will light.



The default setting is WLAN ON / Bluetooth OFF.



Touchpad (F3): Toggles the touchpad ON/OFF.



Resolution Selection (F4): Press to adjust the display resolution.



The Touchpad (<Fn> + <F3>) and Resolution Selection (<Fn> + <F4>) functions are available on selected models.



The display resolution supports up to 1024x600 pixels only under Win7 OS. Applications that require higher resolution support may not function normally.



Sun Down Icon (F5): Decreases the display brightness.



Sun Up Icon (F6): Increases the display brightness.



Crossed Screen Icon (F7): Turns off the display backlight.



LCD/Monitor Icons (F8): Toggles between the Eee PC's LCD display and an external monitor.



Task Manager Icon (F9): Initiates the Task Manager to view the application process or terminates applications.



Crossed Speaker Icon (F10): Mutes the speaker.



Volume Down Icon (F11): Decreases speaker volume.



Volume Up Icon (F12): Increases the speaker volume.



Super Hybrid Engine (Fn+Space Bar): Toggles among various power saving modes. The selected mode is shown on the display.



Num Lk (Insert): Toggles the numeric keypad (number lock) ON and OFF. Allows use of a larger portion of the keyboard for number entering.



Scr Lk (Delete): Toggles the "Scroll Lock" ON and OFF. Allows you to use a larger portion of the keyboard for cell navigation.



Pg Up (↑): Press to scroll up in documents or the web browser.



Pg Dn (↓): Press to scroll down in documents or the web browser.



Home (←): Press to move the pointer to the beginning of the line.



End (→): Press to move the pointer to the end of the line.



Windows icon: Displays the start menu.



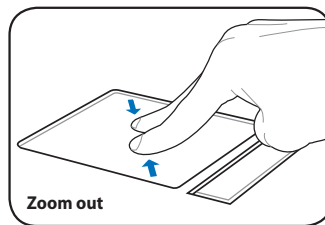
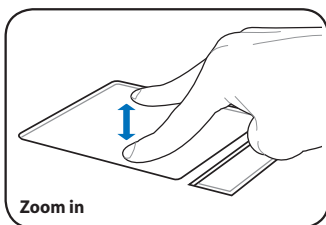
Menu with pointer icon: Activates the properties menu and is equivalent to right-clicking the touchpad/mouse on an object.

Touchpad Usage

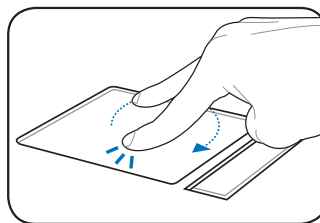
Multi-finger gesture input

Finger gesture	Applications
Two-finger zooming in/out	Adobe reader, Windows Photo Viewer
Two-finger rotating	Adobe reader, Windows Photo Viewer
Two-finger scrolling up/down or left/right	Adobe reader, MS Word, MS Excel
Three-finger page up/down	Adobe reader, MS Word, MS Excel

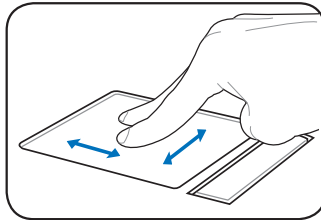
Two-finger zooming in/out - Moving two fingertips apart or together on the touchpad to zoom in or zoom out. This is convenient when viewing photos or reading documents.



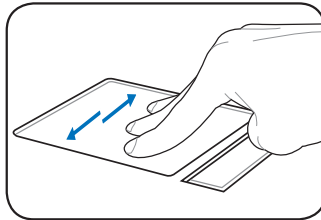
Two-finger rotating - Fix one fingertip on the touchpad and make an arc with the other to rotate the photo or the document you are viewing. You can make a clockwise or counterclockwise rotation based on your needs.



Two-finger scrolling up/down or left/right- Use two fingertips to slide up/down or left/right on the touchpad to scroll a window up/down or left/right. If your display window includes several sub-windows, move the pointer on that pane before scrolling.



Three-finger page up/down- Use three fingers to move horizontally on the touchpad to swipe pages. Swipe from left to the right to view the next page or right to the left to return to the previous pages.



Installing and uninstalling the Battery Pack

Powering on your Eee PC

First-time Startup

Desktop

Network Connection

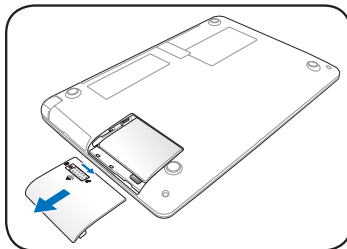
Getting Started **2**

Installing and uninstalling the battery pack

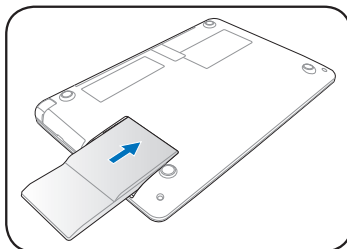
Your Eee PC may have its battery pack installed. If not, use the following procedures to install the battery pack.

To install the battery pack

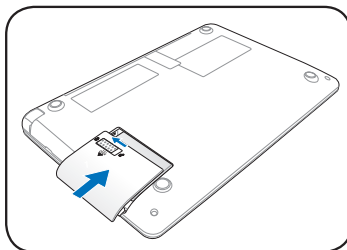
1. Unlock the manual lock to remove the battery cover.



2. Push the battery pack into the battery compartment until you hear a clicking sound from the PRESS button.



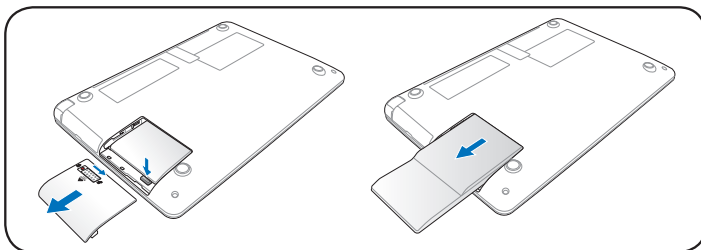
3. Reinstall the battery cover by locking the manual lock.



Use the following procedures to uninstall the battery pack.

To uninstall the battery pack

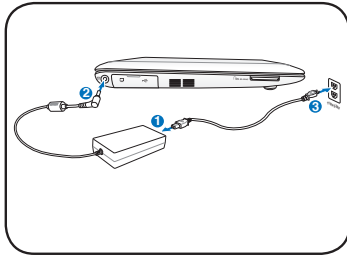
1. Unlock the manual lock to remove the battery cover.
2. Press the PRESS button while drawing out the battery pack.



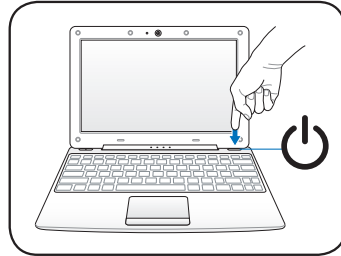
Powering on your Eee PC

These are only quick instructions for using your Eee PC.

1. Connect the AC power adapter



2. Turn ON the Eee PC



- Damage may occur if you use a different adapter to power the Eee PC. You may damage both your battery pack(s) and the Eee PC with a faulty AC-DC adapter.
- When you open the display panel, do not force it down to the table or else the hinges may break! Never lift the Eee PC by the display panel!
- Only use battery packs and power adapters supplied with this Eee PC or specifically approved by the manufacturer or retailer for use with this model or else damage may occur to the Eee PC. The output voltage of this adapter is +19Vdc, 2.1A.
- Never attempt to remove the battery pack while the Eee PC is turned ON, as this may result in the loss of working data.



Remember to fully charge the battery (8 hours or more) before first use and whenever it is depleted to prolong battery life. The battery reaches its maximum capacity after a few full charging and discharging cycles.

First-time Startup



Actual screen images may vary with operating systems. Visit the ASUS website at www.asus.com for the latest information.

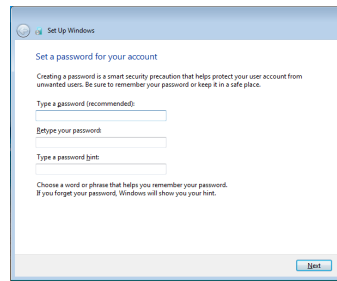
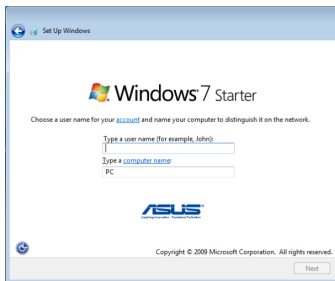
For the first time you start your Eee PC, the Windows wizard will launch automatically and lead you through setting up your preferences and some basic information.

Follow the wizard instructions to finish the initialization:

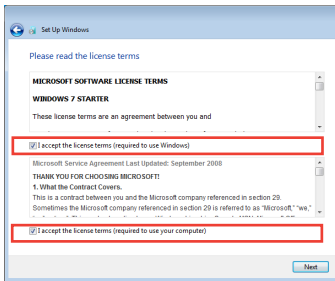
1. Select the language you use. Click **Next** to continue.
2. Select your system settings by specifying the region you are in, the time zone you are in, and the keyboard type you use. Click **Next** to continue.



3. Type your user account name and your computer's name, then click **Next** to continue.
4. Set a password for your user account if you want. Click **Next** to continue.



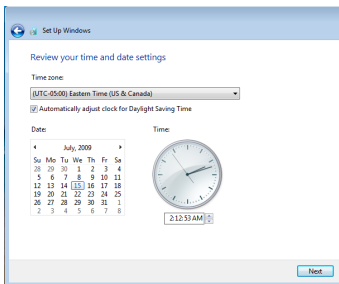
5. Read the end user license agreement and check the two boxes before **I accept the license terms**. Click **Next** to continue.



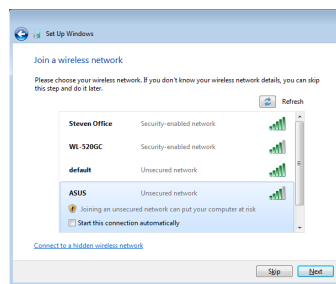
6. Click **Use recommended settings** to get the latest important updates.



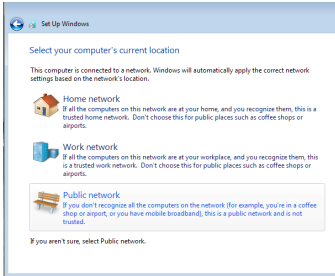
7. Specify the time zone you are in and the local date and time. Click **Next** to continue.



8. Connect to a wireless network and click **Next** to continue. Or click **Skip** to set up the wireless connection later.



9. Select the network's location.
Click **Next** to continue.



10. The initialization is finished.



Desktop

There are several shortcuts on the desktop. Double-click them to launch the corresponding applications and enter the specified folders. Some applications would form minimized icons in the Notification area.





The actual Desktop screen may vary according to different models.

Network Connection

Configuring a wireless network connection


1. Click the wireless network icon with an orange star  in the Windows® taskbar.




If the wireless connection icon does not show in the Notification area. Activate the wireless LAN function by pressing  +  (<Fn> + <F2>) before configuring a wireless network connection.

2. Select the wireless access point you want to connect to from the list and click **Connect** to build the connection.



If you cannot find the desired access point, click the **Refresh** icon  on the upper right corner to refresh and search in the list again.



3. When connecting, you may have to enter a password.
4. After a connection has been established, the connection is shown on the list.
5. You can see the wireless network icon  in the taskbar.




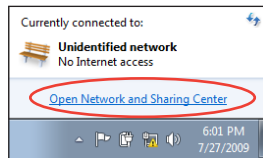
The crossed wireless network icon  appears when you press <Fn> + <F2> to disable the WLAN function.

Local Area Network

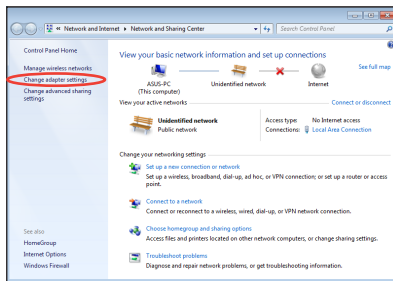
To establish a wired network, follow the instructions below:

Using a dynamic IP / PPPoE network connection:

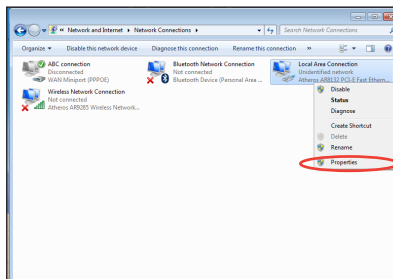
1. Click the network icon with a yellow warning triangle  in the Windows® taskbar and select **Open Network and Sharing Center**.



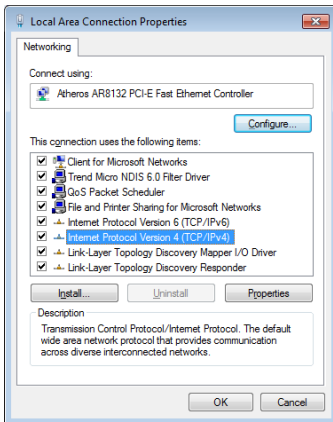
2. Click **Change adapter settings** in the left blue pane.



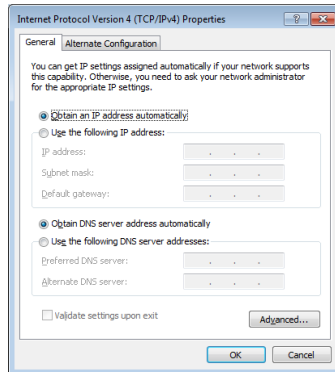
3. Right-click **Local Area Connection** and select **Properties**.



4. Click **Internet Protocol Version 4(TCP/IPv4)** and click **Properties**.

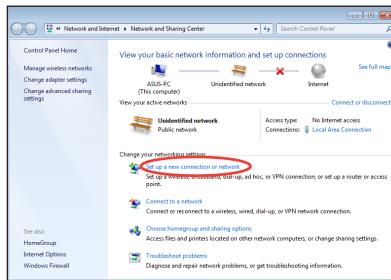


5. Click **Obtain an IP address automatically** and click **OK**.

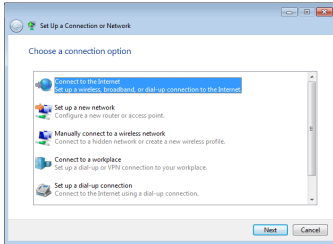


(Continue the following steps if using PPPoE)

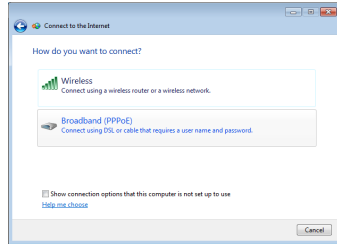
6. Return to the **Network and Sharing Center** and then click **Set up a new connection or network**.



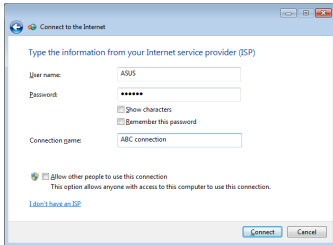
7. Select **Connect to the Internet** and click **Next**.



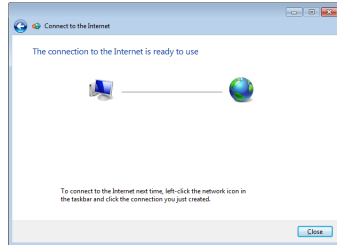
8. Select **Broadband (PPPoE)** and click **Next**.



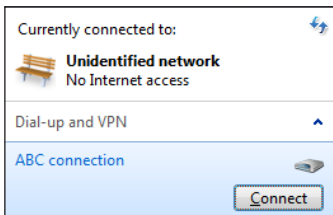
9. Enter your User name, Password, and Connection name. Click **Connect**.



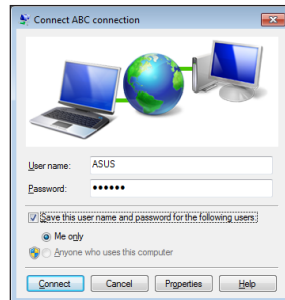
10. Click **Close** to finish the configuration.



11. Click the network icon in the taskbar and click the connection you just created.

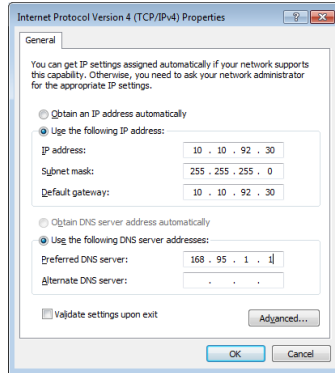


12. Enter your user name and password. Click **Connect** to connect to the Internet.



Using a static IP:

1. Repeat the step 1–4 of Using a dynamic IP to start the static IP network configuration.
2. Click **Use the following IP address**.
3. Enter the IP address, Subnet mask and Gateway from your service provider.
4. If needed, enter the preferred DNS Server address and alternative address.
5. After entering all the related values, click **OK** to build the network connection.



Contact your Internet Service Provider (ISP) if you have problems connecting to the network.

Browsing web pages

After you finish the network setup, click **Internet Explorer** on the desktop and start enjoying net surfing.



Visit our Eee PC homepage (<http://eeepc.asus.com>) to obtain the latest information and register at <http://vip.asus.com> for full service of your Eee PC.

ASUS Update

Bluetooth Connection

Super Hybrid Engine

Eee Docking

Boingo

Microsoft® Office Trial

Using the Eee PC

ASUS Update

The ASUS Update is a utility that allows you to manage, save, and update the Eee PC BIOS in Windows® environment. The ASUS Update utility allows you to:

- Save the current BIOS file
- Download the latest BIOS file from the Internet
- Update the BIOS from an updated BIOS file
- Update the BIOS directly from the Internet, and
- View the BIOS version information.

This utility is pre-loaded in your Eee PC and is also available in the support DVD that comes with the Eee PC package.

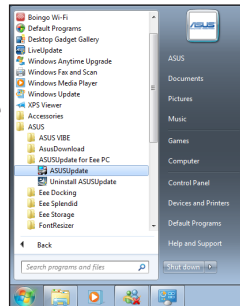


ASUS Update requires an Internet connection either through a network or an Internet Service Provider (ISP).

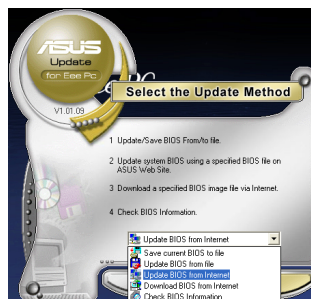
Updating the BIOS through the Internet

To update the BIOS through the Internet

1. Launch the ASUS Update utility from the Windows® desktop by clicking **Start > All Programs > ASUS > ASUSUpdate for Eee PC > ASUSUpdate**. The ASUS Update main window appears.



2. Select **Update BIOS from Internet** from the drop-down menu, then click **Next**.



3. Select the ASUS FTP site nearest you to avoid network traffic, or click **Auto Select**. Click **Next**.
4. From the FTP site, select the desired BIOS version and click **Next**.
5. Follow the screen instructions to complete the update process.

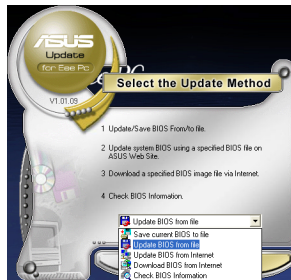


The ASUS Update utility is capable of updating itself through the Internet. Always update the utility to avail all its features.

Updating the BIOS through a BIOS file

To update the BIOS through a BIOS file:

1. Launch the ASUS Update utility from the Windows® desktop by clicking **Start > Programs > ASUS > ASUSUpdate for EeePC > ASUSUpdate**. The ASUS Update main window appears.
2. Select **Update BIOS from file** from the drop-down menu, then click **Next**.
3. Locate the BIOS file from the **Open** window, then click **Open**.
4. Follow the screen instructions to complete the update process.



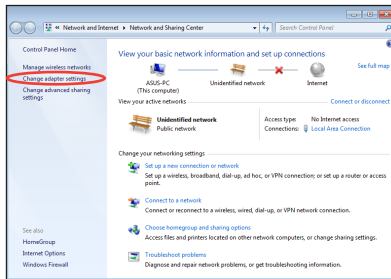
Bluetooth Connection (on selected models)

Bluetooth technology eliminates the need for cables for connecting Bluetooth-enabled devices. Examples of Bluetooth-enabled devices may be Notebook PCs, Desktop PCs, mobile phones, and PDAs.

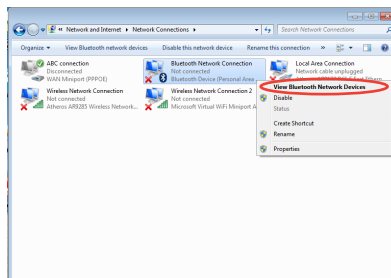
To connect to a Bluetooth-enabled device:

1. Press <Fn> + <F2> repeatedly until **Bluetooth ON** or **WLAN & Bluetooth ON** is shown.

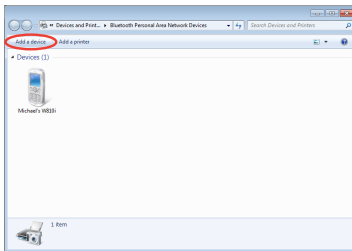
2. From **Control Panel**, go to **Network and Internet** > **Network and Sharing Center** and then click **Change adapter settings** in the left blue pane.



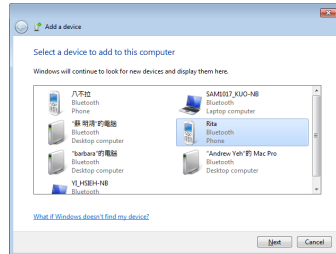
3. Right-click **Bluetooth Network Connection** and select **View Bluetooth Network Devices**.



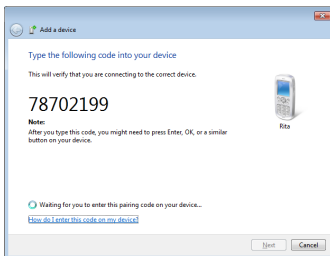
4. Click **Add a device** to look for new devices.



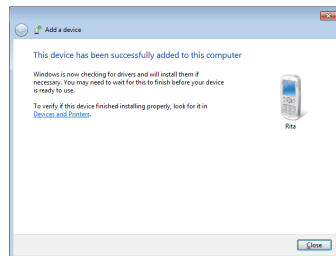
5. Select a Bluetooth-enabled device from the list and click **Next**.



6. Enter the Bluetooth security code into your device and start pairing.




7. The paired relationship is successfully built. Click **Close** to finish the setting.

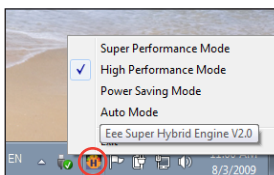


Super Hybrid Engine

Super Hybrid Engine offers different power modes. The assigned instant key toggles power savings between various power saving modes. The power saving modes control many aspects of your Eee PC to maximize performance versus battery time. The selected mode is shown on the display.

To change the power mode

- Click **Start > All Programs > ASUS > EeePC > SuperHybridEngine**.
- Press **<Fn> + <Space Bar>** repeatedly to switch power modes.
- Press the Super Hybrid Engine button .
- Right-click the Super Hybrid Engine icon in the Notification area, and select a preferred power mode.



Super Hybrid Engine Modes



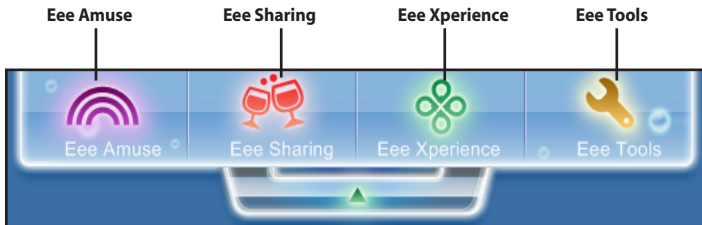
Auto High Performance and **Auto Power-Saving** mode are available only when applying or removing the power adapter.



If your external monitor functions abnormally in **Power Saving** mode at a resolution of 1024 x 768 pixels or higher, press **<Fn> + <F5>** repeatedly to switch the display mode to **LCD Only** or **LCD + CRT Clone** and reset the power mode to **High Performance** or **Super Performance**.

Eee Docking

Eee Docking contains multiple useful applications. The Eee Docking tool bar is at the top of the desktop.



- The applications in Eee Docking may vary depending on models.
- The names of the applications in Eee Docking are subject to change without notice.

Eee Amuse

ASUS @Vibe

ASUS @Vibe allows you to enjoy online entertainment contents including Radio, Live TV and Games, etc.



- The ASUS @Vibe service contents differ for each territory.

Game Park

Game Park includes multiple interesting games.

ASUS AP Bank

ASUS AP Bank offers various software applications and multimedia enjoyment online.

Eee Sharing

ASUS WebStorage

Eee PC users can enjoy free online space. With Internet connection, you can access and share any files whenever you want and wherever you are. The ASUS WebStorage help file is accessible only when your Eee PC connects to the Internet.

YouCAM / E-CAM

YouCAM / E-CAM provides interesting effects and useful add-ons for your webcam.

Eee Xperience

Eee Splendid

Eee Splendid helps improve your Eee PC display in terms of the contrast, brightness, skin tone, and color saturation for red, green, and blue independently.

SRS Premium Sound

SRS Premium offers the rich and immerse audio experience in any listening environment.

Voice Command (Dr. Eee)

Dr. Eee is a voice command tool which allows you to launch a commonly used function with your voice.

Eee Tools

Live Update

Live Update keeps your Eee PC up-to-date by checking the online updates.

Font Resizer

Font Resizer allows you to adjust the font/text size on your Eee PC screen.

LocaleMe

LocaleMe is a web mapping service application, offering easy search for streets or companies sorted by multiple categories all over the world.

System Setting

System Setting offers you quick access to the configuration of the desktop background and the Ad-hoc mode.

Docking Setting

Docking Setting allows you to configure the appearance and the position of the Eee Docking tool bar.

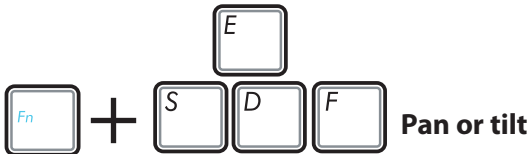
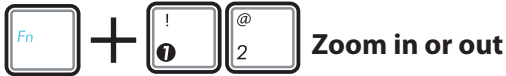
Boingo (on selected models)

Boingo gives you easy access to global Wi-Fi services with a special price via the pre-installed Boingo utility. Use one account at more than 100,000 hotspots around the world, including airports, hotels, cafes and restaurants.

Digital Zoom Control (on selected models)

Digital Zoom Control is a software that helps you control your built-in camera whenever it is in use. You can zoom, pan or tilt the camera with Digital Zoom Control.

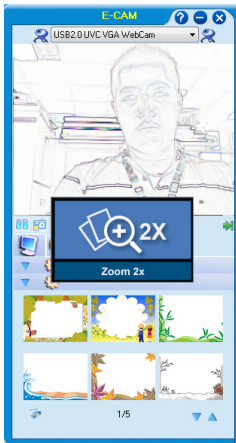
Function keys



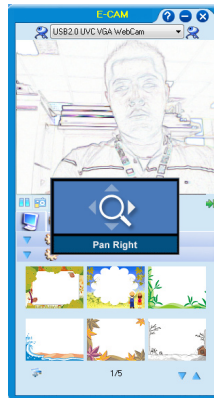
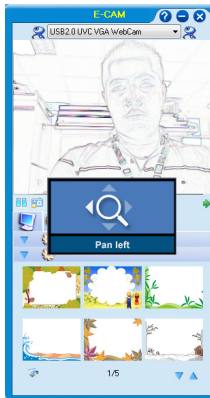
The following is the example when using YouCam / E-Cam:



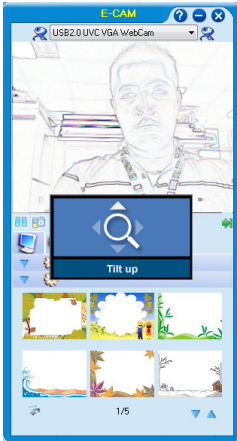
You can use Digital Zoom Control when making a video call or having a video chat.



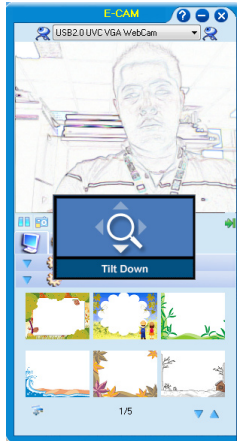
Press <Fn> + <1> to zoom in and <Fn> + <2> to zoom out.



Press <Fn> + <S> to pan left and <Fn> + <F> to pan right.



Press <Fn> + <E> to tilt up.

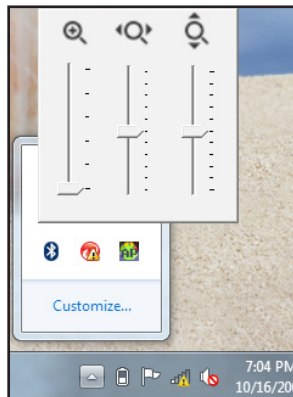
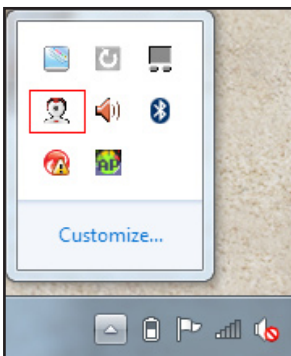


Press <Fn> + <D> to tilt down.



Panning and tilting is only available when you have zoomed in the camera.

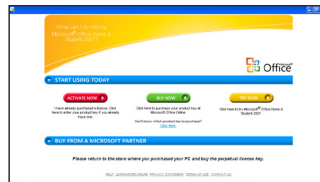
You can also open the control panel by clicking the Digital Zoom Control icon from the Notification area and directly move the sliders for the zooming, panning, and tilting functions.



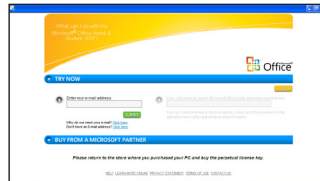
Microsoft® Office Trial

Eee PC users can enjoy Microsoft Office Suite free trial for 60 days. Do the following instructions to start the free trial.

1. Ensure that your Eee PC is connected to the Internet and double-click **Microsoft Office 60 Day Trial - Online** on the desktop.
2. Click **TRY NOW**.



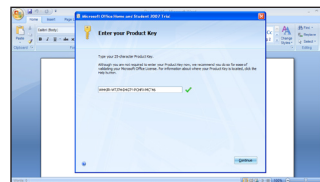
3. Enter your E-mail address and click **SUBMIT**.



4. Copy your product key and click the link.



5. Enter your product key and follow the onscreen instructions to finish the activation process before starting the free trial.



If you want to use other applications in the Microsoft Office Suite, click **start** and point to **All Programs > Microsoft Office** to select a desired application.

Support DVD information
System Recovery
Boot Booster

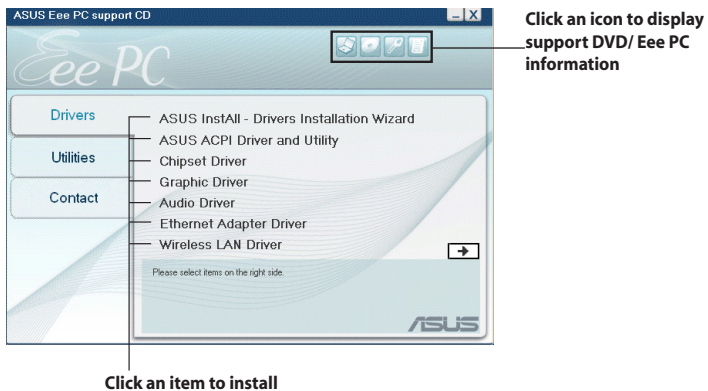
Support DVD & System Recovery

Support DVD information

The support DVD that comes with the Eee PC package contains the drivers, software applications, and utilities that you can install to avail all the features.

Running the support DVD

Insert the support DVD in the external optical drive. The DVD automatically displays the Drivers menu if Autorun is enabled in your computer.



If Autorun is NOT enabled in your computer, browse the contents of the support DVD to locate the file ASSETUP.EXE from the BIN folder. Double-click the ASSETUP.EXE file to run the DVD.



The drivers and utilities bundled in the support DVD may vary by models and are subject to change without notice.

Drivers menu

The Drivers menu shows available device drivers when the system detects installed devices. Install the necessary drivers to activate the devices.

Utilities menu

The Utilities menu shows the applications that the Eee PC supports.

Contact

Click the Contact tab to display the ASUS contact information.

Other information

The icons on the top right corner of the screen provide additional information on the Eee PC and the contents of the support DVD. Click an icon to display the specified information.



System information



Technical support



DVD content



File list

System Recovery



Disable **Boot Booster** in BIOS setup before you perform system recovery from USB flash disk, external optical drive or hidden partition. Refer to the end of this chapter for details.

Using Recovery Partition (F9 Recovery)

About the Recovery Partition

The Recovery Partition is a space reserved on your hard disk drive used to restore the operating system, drivers, and utilities installed on your Eee PC at the factory.



Ensure to connect your Eee PC to the AC power adapter before using F9 recovery to avoid recovery failure.

Using the Recovery Partition:

1. Press <F9> during bootup (requires a Recovery Partition)



Ensure to press <F9> only once during bootup.

2. Click **Recovery** in the **Recovery System** dialog box to start the system recovery.
3. The system starts system recovery automatically and follow the onscreen instructions to complete the recovery process.

Using the Support DVD

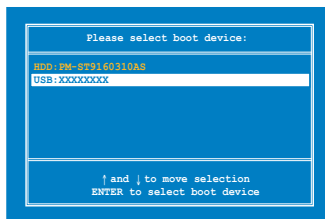
The Support DVD includes the operating system, drivers, and utilities. The Support DVD provides a comprehensive recovery solution that quickly restores the operating system and installs drivers and utilities. Before using the Support DVD, copy your data files to a USB storage device or to a network drive and make note of any customized configuration settings (such as network settings).



If you use the Support DVD to do the system recovery, the restored drivers and utilities may be different from the ones installed on your Eee PC at the factory.

1. Connect an external optical drive to your Eee PC and insert the Support DVD into the optical drive (System needs to be powered ON).

2. Press <ESC> on bootup and the **Please select boot device** screen appears. Select USB: XXXXXX (may be labeled as the ODD brand name) to boot from the optical drive. Press <Enter> and then press any key to continue.



3. The **ASUS Recovery CD/DVD** window appears. Select where to install a new system.
Options are:

Recover system to a partition

This option will delete only the partition you select from below, allowing you to keep other partitions. Select a partition and click **NEXT**.

Recover system to entire HD

This option will delete all partitions from your hard disk drive and restore the operating system. Select and click **Yes**.



If you select **Recover system to entire HD**, the entire hard disk drive will be a partition and the F9 recovery function will no longer exist. Therefore, we highly recommend that you use the F9 recovery to restore the system.

4. Follow the onscreen instructions to complete the recovery process.



You will lose all your data during the system recovery. Ensure that you make a backup of it before recovering the system.

5. After the system recovery is completed, restart the computer.
6. Set up your language, time zone, keyboard, computer name, and user name to enter the Windows® OS.



This support DVD is for Eee PC only. DO NOT use it on other computers. Visit the ASUS website at www.asus.com for any updates.

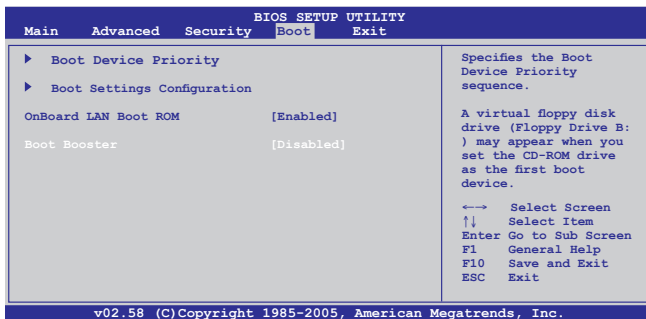
Boot Booster

The Boot Booster item in BIOS setup helps shorten your Eee PC bootup time. However, you MUST disable this BIOS item before you change any Eee PC components or perform system recovery (from USB flash disk, external optical drive or hidden partition). Follow the instructions below to disable Boot Booster:

1. Start the system and press <F2> on bootup to show the POST screen. Press <F2> again to enter the BIOS setup.
2. Set **Boot Booster** to [Disabled]



If you fail to see the POST screen or enter the BIOS setup by doing the instruction above, restart the system and try pressing <F2> repeatedly on bootup.



3. Press <F10> to save the configuration and restart Eee PC.



Remember to enable Boot Booster after you complete hardware change or system recovery.

Declarations and Safety Statements

Copyright Information

Limitation of Liability

Service and Support

Appendix

Declarations and Safety Statements

Federal Communications Commission Statement

This device complies with FCC Rules Part 15. Operation is subject to the following two conditions:

- This device may not cause harmful interference, and
- This device must accept any interference received, including interference that may cause undesired operation.

This equipment has been tested and found to comply with the limits for a class B digital device, pursuant to Part 15 of the Federal Communications Commission (FCC) rules. These limits are designed to provide reasonable protection against harmful interference in a residential installation. This equipment generates, uses, and can radiate radio frequency energy and, if not installed and used in accordance with the instructions, may cause harmful interference to radio communications. However, there is no guarantee that interference will not occur in a particular installation. If this equipment does cause harmful interference to radio or television reception, which can be determined by turning the equipment off and on, the user is encouraged to try to correct the interference by one or more of the following measures:

- Reorient or relocate the receiving antenna.
- Increase the separation between the equipment and receiver.
- Connect the equipment into an outlet on a circuit different from that to which the receiver is connected.
- Consult the dealer or an experienced radio/TV technician for help.



The use of a shielded-type power cord is required in order to meet FCC emission limits and to prevent interference to the nearby radio and television reception. It is essential that only the supplied power cord be used. Use only shielded cables to connect I/O devices to this equipment. You are cautioned that changes or modifications not expressly approved by the party responsible for compliance could void your authority to operate the equipment.

(Reprinted from the Code of Federal Regulations #47, part 15.193, 1993.
Washington DC: Office of the Federal Register, National Archives and Records
Administration, U.S. Government Printing Office.)

FCC Radio Frequency (RF) Exposure Caution Statement



Any changes or modifications not expressly approved by the party responsible for compliance could void the user's authority to operate this equipment. "The manufacture declares that this device is limited to Channels 1 through 11 in the 2.4GHz frequency by specified firmware controlled in the USA."

This equipment complies with FCC radiation exposure limits set forth for an uncontrolled environment. To maintain compliance with FCC RF exposure compliance requirements, please avoid direct contact to the transmitting antenna during transmitting. End users must follow the specific operating instructions for satisfying RF exposure compliance.

Eee PC 1008P

Max. SAR Measurement (1g)

AW-NE762H

802.11g: 0.035 W/kg

802.11b: 0.038 W/kg

802.11n 20MHz : 0.035 W/kg

802.11n 40MHz : 0.037 W/kg

AW-NE785H

802.11g: 0.039 W/kg

802.11b: 0.040 W/kg

802.11n 20MHz : 0.035 W/kg

802.11n 40MHz : 0.038 W/kg

Declaration of Conformity (R&TTE directive 1999/5/EC)

The following items were completed and are considered relevant and sufficient:

- Essential requirements as in [Article 3]
- Protection requirements for health and safety as in [Article 3.1a]
- Testing for electric safety according to [EN 60950]
- Protection requirements for electromagnetic compatibility in [Article 3.1b]
- Testing for electromagnetic compatibility in [EN 301 489-1] & [EN 301 489-17]
- Effective use of the radio spectrum as in [Article 3.2]
- Radio test suites according to [EN 300 328-2]

IC Radiation Exposure Statement for Canada

This equipment complies with IC radiation exposure limits set forth for an uncontrolled environment. To maintain compliance with IC RF exposure compliance requirements, please avoid direct contact to the transmitting antenna during transmitting. End users must follow the specific operating instructions for satisfying RF exposure compliance.

Operation is subject to the following two conditions:

- This device may not cause interference and
- This device must accept any interference, including interference that may cause undesired operation of the device.

To prevent radio interference to the licensed service (i.e. co-channel Mobile Satellite systems) this device is intended to be operated indoors and away from windows to provide maximum shielding. Equipment (or its transmit antenna) that is installed outdoors is subject to licensing.

Eee PC 1008P

Max. SAR Measurement (1g)

AW-NE762H

802.11g: 0.035 W/kg

802.11b: 0.038 W/kg

802.11n 20MHz : 0.035 W/kg

802.11n 40MHz : 0.037 W/kg

AW-NE785H

802.11g: 0.039 W/kg

802.11b: 0.040 W/kg

802.11n 20MHz : 0.035 W/kg

802.11n 40MHz : 0.038 W/kg

This device and its antenna(s) must not be co-located or operating in conjunction with any other antenna or transmitter.

Country Code selection feature to be disabled for products marketed to the US/CANADA.

This Class [B] digital apparatus complies with Canadian ICES-003.

Cet appareil numérique de la classe [B] est conforme à la norme NMB-003 du Canada

CE Marking



CE marking for devices without wireless LAN/Bluetooth

The shipped version of this device complies with the requirements of the EEC directives 2004/108/EC "Electromagnetic compatibility" and 2006/95/EC "Low voltage directive".



CE marking for devices with wireless LAN/ Bluetooth

This equipment complies with the requirements of Directive 1999/5/EC of the European Parliament and Commission from 9 March, 1999 governing Radio and Telecommunications Equipment and mutual recognition of conformity.

Wireless Operation Channel for Different Domains

N. America	2.412-2.462 GHz	Ch01 through CH11
Japan	2.412-2.484 GHz	Ch01 through Ch14
Europe ETSI	2.412-2.472 GHz	Ch01 through Ch13

France Restricted Wireless Frequency Bands

Some areas of France have a restricted frequency band. The worst case maximum authorized power indoors are:

- 10mW for the entire 2.4 GHz band (2400 MHz–2483.5 MHz)
- 100mW for frequencies between 2446.5 MHz and 2483.5 MHz



Channels 10 through 13 inclusive operate in the band 2446.6 MHz to 2483.5 MHz.

There are few possibilities for outdoor use: On private property or on the private property of public persons, use is subject to a preliminary authorization procedure by the Ministry of Defense, with maximum authorized power of 100mW in the 2446.5–2483.5 MHz band. Use outdoors on public property is not permitted.

In the departments listed below, for the entire 2.4 GHz band:

- Maximum authorized power indoors is 100mW
- Maximum authorized power outdoors is 10mW

Departments in which the use of the 2400–2483.5 MHz band is permitted with an EIRP of less than 100mW indoors and less than 10mW outdoors:

01 Ain	02 Aisne	03 Allier
05 Hautes Alpes	08 Ardennes	09 Ariège
11 Aude	12 Aveyron	16 Charente
24 Dordogne	25 Doubs	26 Drôme
32 Gers	36 Indre	37 Indre et Loire
41 Loir et Cher	45 Loiret	50 Manche
55 Meuse	58 Nièvre	59 Nord
60 Oise	61 Orne	63 Puy du Dôme
64 Pyrénées Atlantique	66 Pyrénées Orientales	
67 Bas Rhin	68 Haut Rhin	70 Haute Saône

71 Saône et Loire	75 Paris	82 Tarn et Garonne
84 Vaucluse	88 Vosges	89 Yonne
90 Territoire de Belfort	94 Val de Marne	

This requirement is likely to change over time, allowing you to use your wireless LAN card in more areas within France. Please check with ART for the latest information (www.art-telecom.fr)



Your WLAN Card transmits less than 100mW, but more than 10mW.

UL Safety Notices

Required for UL 1459 covering telecommunications (telephone) equipment intended to be electrically connected to a telecommunication network that has an operating voltage to ground that does not exceed 200V peak, 300V peak-to-peak, and 105V rms, and installed or used in accordance with the National Electrical Code (NFPA 70).

When using the Eee PC modem, basic safety precautions should always be followed to reduce the risk of fire, electric shock, and injury to persons, including the following:

- DO NOT use the Eee PC near water, for example, near a bath tub, wash bowl, kitchen sink or laundry tub, in a wet basement or near a swimming pool.
- DO NOT use the Eee PC during an electrical storm. There may be a remote risk of electric shock from lightning.
- DO NOT use the Eee PC in the vicinity of a gas leak.

Required for UL 1642 covering primary (nonrechargeable) and secondary (rechargeable) lithium batteries for use as power sources in products. These batteries contain metallic lithium, or a lithium alloy, or a lithium ion, and may consist of a single electrochemical cell or two or more cells connected in series, parallel, or both, that convert chemical energy into electrical energy by an irreversible or reversible chemical reaction.

- Do not dispose the Eee PC battery pack in a fire, as they may explode. Check with local codes for possible special disposal instructions to reduce the risk of injury to persons due to fire or explosion.
- Do not use power adapters or batteries from other devices to reduce the risk of injury to persons due to fire or explosion. Use only UL certified power adapters or batteries supplied by the manufacturer or authorized retailers.

Power Safety Requirement

Products with electrical current ratings up to 6A and weighing more than 3Kg must use approved power cords greater than or equal to: H05VV-F, 3G, 0.75mm² or H05VV-F, 2G, 0.75mm².

REACH Notice

Complying with the REACH (Registration, Evaluation, Authorisation, and Restriction of Chemicals) regulatory framework, we published the chemical substances in our products at ASUS REACH website at <http://green.asus.com/english/REACH.htm>.

Nordic Lithium Cautions (for lithium-ion batteries)



CAUTION! Danger of explosion if battery is incorrectly replaced. Replace only with the same or equivalent type recommended by the manufacturer. Dispose of used batteries according to the manufacturer's instructions. (English)



ATTENZIONE! Rischio di esplosione della batteria se sostituita in modo errato. Sostituire la batteria con un una di tipo uguale o equivalente consigliata dalla fabbrica. Non disperdere le batterie nell'ambiente. (Italian)



VORSICHT! Explosionsgefahr bei unsachgemäßen Austausch der Batterie. Ersatz nur durch denselben oder einem vom Hersteller empfohlenem ähnlichen Typ. Entsorgung gebrauchter Batterien nach Angaben des Herstellers. (German)



ADVARSELI! Lithiumbatteri - Eksplosionsfare ved fejlagtig håndtering. Udskiftning må kun ske med batteri af samme fabrikat og type. Levér det brugte batteri tilbage til leverandøren. (Danish)



WARNING! Explosionsfara vid felaktigt batteribyte. Använd samma batterityp eller en ekvivalent typ som rekommenderas av apparattillverkaren. Kassera använt batteri enligt fabrikantens instruktion. (Swedish)



VAROITUS! Paristo voi räjähtää, jos se on virheellisesti asennettu. Vaihda paristo ainoastaan laitevalmistajan suosittellemaan tyyppiin. Hävitä käytetty paristo valmistajan ohjeiden mukaisesti. (Finnish)



ATTENTION! Il y a danger d'explosion s'il y a remplacement incorrect de la batterie. Remplacer uniquement avec une batterie du même type ou d'un type équivalent recommandé par le constructeur. Mettre au rebut les batteries usagées conformément aux instructions du fabricant. (French)



ADVARSEL! Eksplosjonsfare ved feilaktig skifte av batteri. Benytt samme batteritype eller en tilsvarende type anbefalt av apparatfabrikanten. Brukte batterier kasseres i henhold til fabrikantens instruksjoner. (Norwegian)



標準品以外の使用は、危険の元になります。交換品を使用する場合、製造者に指定されるものを使って下さい。製造者の指示に従って処理して下さい。(Japanese)



ВНИМАНИЕ! При замене аккумулятора на аккумулятор иного типа возможно его возгорание. Утилизируйте аккумулятор в соответствии с инструкциями производителя. (Russian)

Copyright Information

No part of this manual, including the products and software described in it, may be reproduced, transmitted, transcribed, stored in a retrieval system, or translated into any language in any form or by any means, except documentation kept by the purchaser for backup purposes, without the express written permission of ASUSTeK COMPUTER INC. ("ASUS").

ASUS PROVIDES THIS MANUAL "AS IS" WITHOUT WARRANTY OF ANY KIND, EITHER EXPRESS OR IMPLIED, INCLUDING BUT NOT LIMITED TO THE IMPLIED WARRANTIES OR CONDITIONS OF MERCHANTABILITY OR FITNESS FOR A PARTICULAR PURPOSE. IN NO EVENT SHALL ASUS, ITS DIRECTORS, OFFICERS, EMPLOYEES OR AGENTS BE LIABLE FOR ANY INDIRECT, SPECIAL, INCIDENTAL, OR CONSEQUENTIAL DAMAGES (INCLUDING DAMAGES FOR LOSS OF PROFITS, LOSS OF BUSINESS, LOSS OF USE OR DATA, INTERRUPTION OF BUSINESS AND THE LIKE), EVEN IF ASUS HAS BEEN ADVISED OF THE POSSIBILITY OF SUCH DAMAGES ARISING FROM ANY DEFECT OR ERROR IN THIS MANUAL OR PRODUCT.

Products and corporate names appearing in this manual may or may not be registered trademarks or copyrights of their respective companies, and are used only for identification or explanation and to the owners' benefit, without intent to infringe.

SPECIFICATIONS AND INFORMATION CONTAINED IN THIS MANUAL ARE FURNISHED FOR INFORMATIONAL USE ONLY, AND ARE SUBJECT TO CHANGE AT ANY TIME WITHOUT NOTICE, AND SHOULD NOT BE CONSTRUED AS A COMMITMENT BY ASUS. ASUS ASSUMES NO RESPONSIBILITY OR LIABILITY FOR ANY ERRORS OR INACCURACIES THAT MAY APPEAR IN THIS MANUAL, INCLUDING THE PRODUCTS AND SOFTWARE DESCRIBED IN IT.

Copyright © 2009 ASUSTeK COMPUTER INC. All Rights Reserved.

Limitation of Liability

Circumstances may arise where because of a default on ASUS' part or other liability, you are entitled to recover damages from ASUS. In each such instance, regardless of the basis on which you are entitled to claim damages from ASUS, ASUS is liable for no more than damages for bodily injury (including death) and damage to real property and tangible personal property; or any other actual and direct damages resulted from omission or failure of performing legal duties under this Warranty Statement, up to the listed contract price of each product.

ASUS will only be responsible for or indemnify you for loss, damages or claims based in contract, tort or infringement under this Warranty Statement.

This limit also applies to ASUS' suppliers and its reseller. It is the maximum for which ASUS, its suppliers, and your reseller are collectively responsible.

UNDER NO CIRCUMSTANCES IS ASUS LIABLE FOR ANY OF THE FOLLOWING: (1) THIRD-PARTY CLAIMS AGAINST YOU FOR DAMAGES; (2) LOSS OF, OR DAMAGE TO, YOUR RECORDS OR DATA; OR (3) SPECIAL, INCIDENTAL, OR INDIRECT DAMAGES OR FOR ANY ECONOMIC CONSEQUENTIAL DAMAGES (INCLUDING LOST PROFITS OR SAVINGS), EVEN IF ASUS, ITS SUPPLIERS OR YOUR RESELLER IS INFORMED OF THEIR POSSIBILITY.

Service and Support

Visit our multi-language web site at <http://www.asus.com>

Manufacturer	ASUSTek COMPUTER INC.
Address, City	No. 150, LI-TE RD., PEITOU, TAIPEI 112, TAIWAN R.O.C
Country	TAIWAN
Authorized Representative in Europe	ASUS COMPUTER GmbH
Address, City	HARKORT STR. 21-23, 40880 RATINGEN
Country	GERMANY

Free Manuals Download Website

<http://myh66.com>

<http://usermanuals.us>

<http://www.somanuals.com>

<http://www.4manuals.cc>

<http://www.manual-lib.com>

<http://www.404manual.com>

<http://www.luxmanual.com>

<http://aubethermostatmanual.com>

Golf course search by state

<http://golfingnear.com>

Email search by domain

<http://emailbydomain.com>

Auto manuals search

<http://auto.somanuals.com>

TV manuals search

<http://tv.somanuals.com>