

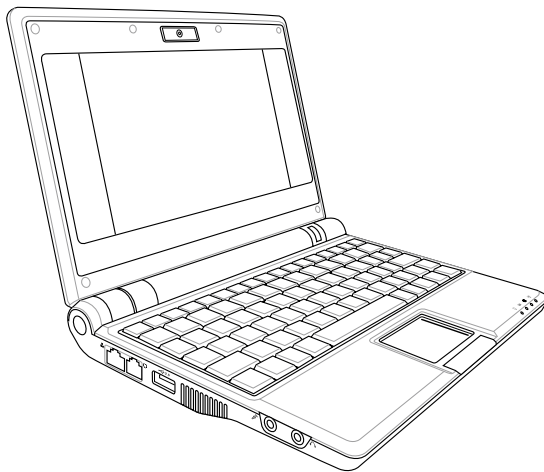


Eee PC User's Manual

Eee PC 4G (701)

Eee PC 4G Surf

Eee PC 8G



October 2007

Table of Contents

Chaper 1: Introducing the Eee PC

About This User's Manual	1-2
Notes for This Manual	1-3
Safety Precautions	1-4
Transportation Precautions	1-5
Charging Your Batteries.....	1-5
Airplane Precautions	1-5
Preparing your Eee PC.....	1-6

Chaper 2: Knowing the Parts

Top Side	2-2
Bottom Side.....	2-5
Right Side.....	2-7
Left Side.....	2-8
Rear Side.....	2-9

Chaper 3: Getting Started

Power System	3-2
Using AC Power	3-2
Using Battery Power	3-4
Touchpad Usage.....	3-6
Keyboard Usage.....	3-8
Special Function Keys	3-8
Adjust the window.....	3-10
First Run Wizard	3-11
Operating Mode	3-13
Shutdown.....	3-14

Chaper 4: Using the Eee PC

Internet	4-2
Configuring a wireless network connection.....	4-2
Configuring a network connection.....	4-4
Wireless Point-to-Point Protocol over Ethernet.....	4-9
Browsing web pages	4-14
Enjoying free resources.....	4-15

Table of Contents

Accessing E-mail	4-16
Chatting with friends	4-17
Checking the World Clock	4-19
Work	4-20
Office applications	4-20
Management software	4-24
Accessories & Dictionary	4-27
Learn	4-28
Science	4-28
Language	29
Math	4-29
Paint	4-30
Web Learn	4-30
Play	4-31
Media Player	4-31
Music Manager	4-32
Photo Manager	4-33
Video Manager	4-34
Webcam (optional)	4-34
Sound Recorder	4-35
Games	4-35
Settings	4-36
Anti-Virus	4-36
Volume	4-36
Instant Shutdown	4-37
Printers	4-37
System Info	4-38
Date & Time	4-38
Personalization	4-39
Add/Remove Software	4-39
Touchpad	4-42
Disk Utility	4-42
Diagnostic Tools	4-43
Desktop Mode	4-44
Voice Command	4-45

Table of Contents

Task Manager4-46
Favorites4-47

Chapter 5: Installing & Optimizing Windows® XP

Preparing to install Windows® XP 5-2
Installing Windows® XP 5-2
Optimizing Windows® XP..... 5-4
 Changing Virtual Memory 5-4
 Turning off System Restore 5-5
 Compressing Disk Drive 5-6
 Relocating Files..... 5-6
 Deleting unnecessary Windows Components..... 5-8
 Clearing System Backup Data 5-8
 Deleting unnecessary document files 5-9

Chapter 6: Support DVD & System Recovery

Support DVD information 6-2
 Running the support DVD 6-2
 Drivers menu 6-3
 Utilities menu 6-4
 Manual 6-5
 Contact 6-5
 Other information 6-6
System Recovery 6-7
 Using Hidden Partition 6-7
 Using the Support DVD 6-8
 Using USB Flash Disk 6-8

Appendix

Trademark Statements A-2
Qualified Vendor List..... A-3
Declarations and Safety Statements A-4
GNU General Public License A-19
Copyright Information A-32
Limitation of Liability A-33
Service and Support..... A-33

About This User's Manual

Notes for This Manual

Safety Precautions

Preparing Your Eee PC

**Introducing
the Eee PC**

A large, light gray, stylized number '1' is positioned behind the word 'Introducing' and partially behind the word 'PC' in the main title.

About This User's Manual

You are reading the Eee PC User's Manual. This User's Manual provides information regarding the various components in the Eee PC and how to use them. The following are major sections of this User's Manual:

1. Introducing the Eee PC

Introduces the Eee PC and this User's Manual.

2. Knowing the Parts

Provides information on the Eee PC's components.

3. Getting Started

Provides information on getting started with the Eee PC.

4. Using the Eee PC

Provides information on using the Eee PC's utilities.

5. Installing & Optimizing Windows® XP

Gives you information on how to install and optimize Windows® XP on your Eee PC.

6. Support DVD & System Recovery

Gives you information on the support DVD and system recovery.

7. Appendix

Provides you QVL and gives safety statements.

Notes for This Manual

A few notes and warnings are used throughout this guide, allowing you to complete certain tasks safely and effectively. These notes have different degrees of importance as follows:



WARNING! Important information that must be followed for safe operation.



IMPORTANT! Vital information that must be followed to prevent damage to data, components, or persons.



TIP: Tips for completing tasks.



NOTE: Information for special situations.

Safety Precautions

The following safety precautions will increase the life of the Eee PC. Follow all precautions and instructions. Except as described in this manual, refer all servicing to qualified personnel. Do not use damaged power cords, accessories, or other peripherals. Do not use strong solvents such as thinners, benzene, or other chemicals on or near the surface.



Disconnect the AC power and remove the battery pack(s) before cleaning. Wipe the Eee PC using a clean cellulose sponge or chamois cloth dampened with a solution of nonabrasive detergent and a few drops of warm water and remove any extra moisture with a dry cloth.



DO NOT place on uneven or unstable work surfaces. Seek servicing if the casing has been damaged.



DO NOT place or drop objects on top and do not shove any foreign objects into the Eee PC.



DO NOT expose to dirty or dusty environments. DO NOT operate during a gas leak.



DO NOT expose to strong magnetic or electrical fields.



DO NOT press or touch the display panel. Do not place together with small items that may scratch or enter the Eee PC.



DO NOT expose to or use near liquids, rain, or moisture. DO NOT use the modem during electrical storms.



DO NOT leave the Eee PC on your lap or any part of the body to prevent discomfort or injury from heat exposure.



Battery safety warning: DO NOT throw the battery in fire. DO NOT short circuit the contacts. DO NOT disassemble the battery.



SAFE TEMP: This Eee PC should only be used in environments with ambient temperatures between 5°C (41°F) and 35°C (95°F)



INPUT RATING: Refer to the rating label on the bottom of the Eee PC and be sure that your power adapter complies with the rating.



DO NOT throw the Eee PC in municipal waste. Check local regulations for disposal of electronic products.



DO NOT carry or cover a Eee PC that is powered ON with any materials that will reduce air circulation such as a carrying bag.

Transportation Precautions

To prepare the Eee PC for transport, you should turn it OFF and **disconnect all external peripherals to prevent damage to the connectors**. The solid-state disk drive's head retracts when the power is turned OFF to prevent scratching of the solid-state disk drive surface during transport. Therefore, you should not transport the Eee PC while the power is still ON. Close the display panel and check that it is latched securely in the closed position to protect the keyboard and display panel.



The Eee PC's surface is easily dulled if not properly cared for. Be careful not to rub or scrape surfaces when transporting your Eee PC. You can purchase an optional carrying case for protection from dirt, water, shock, and scratches.

Charging Your Batteries

If you intend to use battery power, be sure to fully charge your battery pack and any optional battery packs before going on long trips. Remember that the power adapter charges the battery pack as long as it is plugged into the computer and an AC power source. Be aware that it takes much longer to charge the battery pack when the Eee PC is in use.

Airplane Precautions

Contact your airline if you want to use the Eee PC on the airplane. Most airlines have restrictions for using electronic devices. Most airlines allow electronic use only between and not during takeoffs and landings.

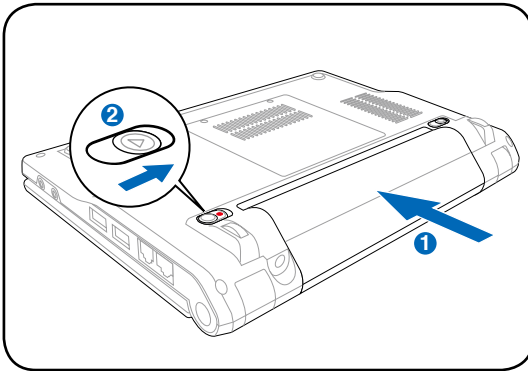


There are three main types of airport security devices: X-ray machines (used on items placed on conveyor belts), magnetic detectors (used on people walking through security checks), and magnetic wands (hand-held devices used on people or individual items). You can send your Eee PC and diskettes through airport X-ray machines. However, it is recommended that you do not send your Eee PC or diskettes through airport magnetic detectors or expose them to magnetic wands.

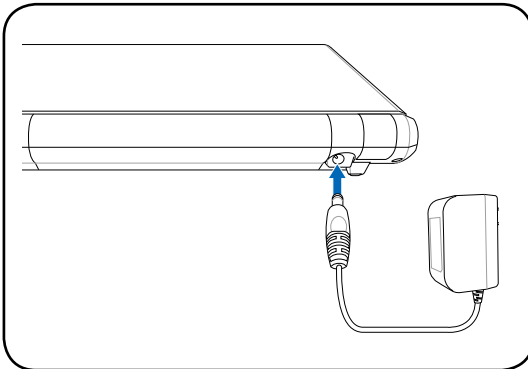
Preparing your Eee PC

These are only quick instructions for using your Eee PC. Read the following chapters for detailed information.

1. Install the battery pack

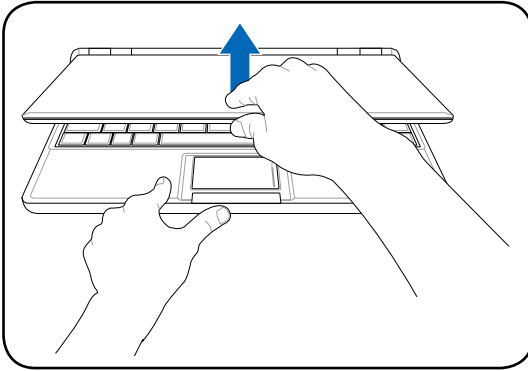


2. Connect the AC power adapter

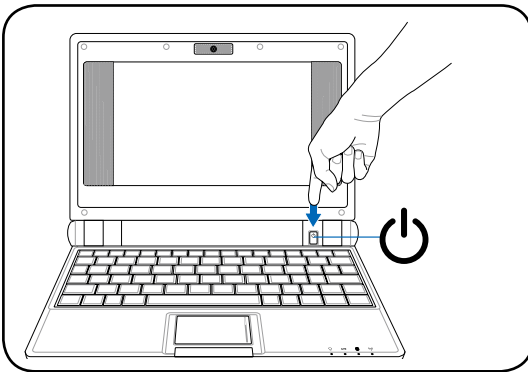


The wall outlet differs in type by country. Your Eee PC ships with an adapter compliant with your national standard. The illustration above is for reference only and may not exactly show your specific configuration. Refer to page 3-2 for more details.

3. Open the display panel



4. Turn ON the Eee PC



When you open the display panel, do not force it down to the table or else the hinges may break! Never lift the Eee PC by the display panel!

Top Side

Bottom Side

Right Side

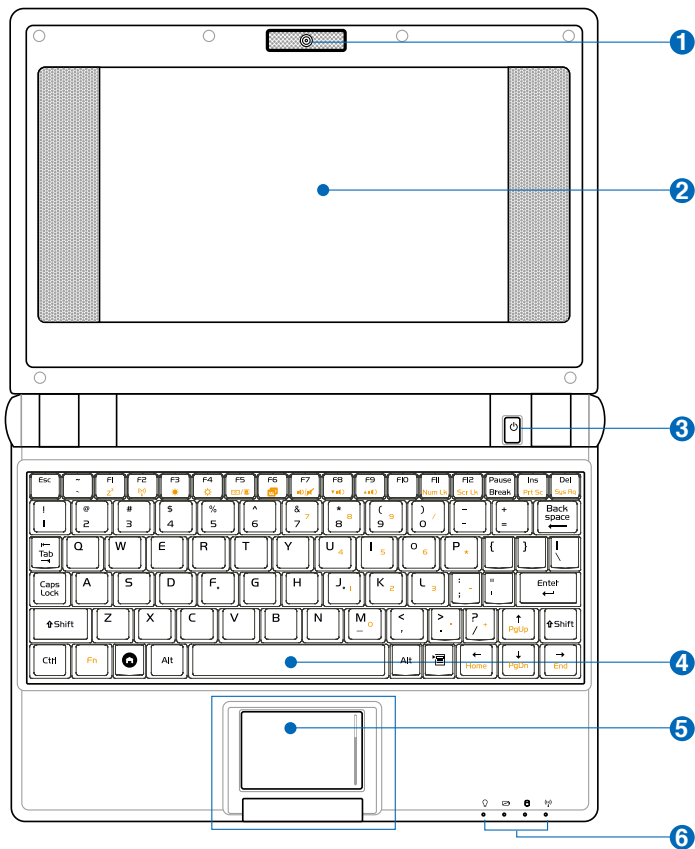
Left Side

Rear Side

Knowing the Parts **2**

Top Side

Refer to the diagram below to identify the components on this side of the Eee PC.



The keyboard will differ for each territory.

1  **Built-in Camera (optional)**

The built-in camera allows picture taking or video recording.

2  **Display Panel**

The display panel functions the same as a desktop monitor. The Eee PC uses an active matrix TFT LCD, which provides excellent viewing like that of desktop monitors. Unlike desktop monitors, the LCD panel does not produce any radiation or flickering, so it is easier on the eyes. Use a soft cloth without chemical liquids (use plain water if necessary) to clean the display panel.

3  **Power Switch**

The power switch allows powering ON and OFF the Eee PC and recovering from STR. Press the switch once to turn ON and hold it to turn OFF the Eee PC. The power switch only works when the display panel is opened.

4  **Keyboard**

The keyboard provides keys with comfortable travel (depth at which the keys can be depressed) and palm rest for both hands.

5  **Touchpad and Buttons**

The touchpad and its buttons comprises a pointing device that provides the same functions as a desktop mouse. Scrolling is available to allow easy web and document navigation.

6



Status Indicators (front)



Power Indicator

The power indicator lights when the Eee PC is turned ON and blinks slowly when the Eee PC is in the Save-to-RAM (Suspend) mode. This indicator is OFF when the Eee PC is turned OFF.



Battery Charge Indicator

The battery charge indicator (LED) shows the status of the battery's power as follows:

ON: The Eee PC's battery is charging when AC power is connected.

OFF: The Eee PC's battery is charged or completely drained.

Blinking: Battery power is less than 10% and AC power is not connected.



Solid-State disk (SSD) Indicator

The solid-state disk drive indicator blinks when data is written to or read from the disk drive.



Wireless Indicator

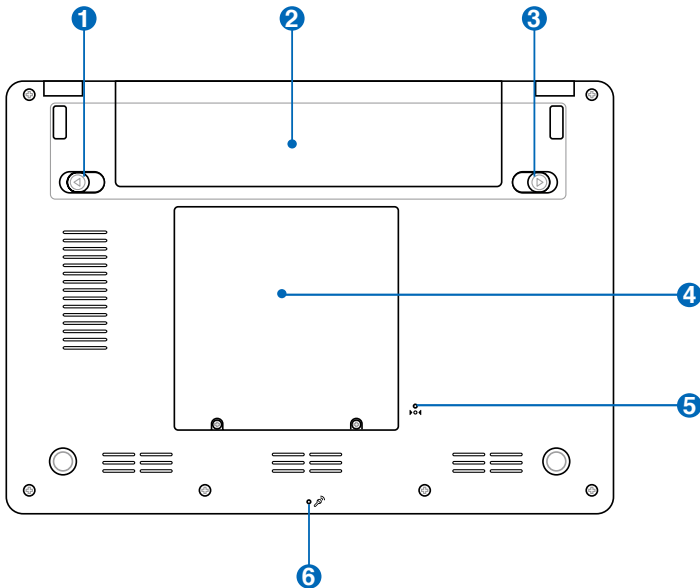
This is only applicable on models with built-in wireless LAN. When the built-in wireless LAN is enabled, this indicator lights.

Bottom Side

Refer to the diagram below to identify the components on this side of the Eee PC.



The bottom side may vary in appearance depending on model.



The bottom of the Eee PC can get very hot. Be careful when handling the Eee PC while it is in operation or recently been in operation. High temperatures are normal during charging or operation. **DO NOT** use on soft surfaces such as beds or sofas, which may block the vents. **DO NOT PUT THE Eee PC ON YOUR LAP OR OTHER PARTS OF THE BODY TO AVOID INJURY FROM THE HEAT.**

1 **Battery Lock - Spring**

The spring battery lock keeps the battery pack secure. When the battery pack is inserted, it will automatically lock. When removing the battery pack, this spring lock must be retained in the unlocked position.

2 **Battery Pack**

The battery pack is automatically charged when connected to an AC power source and maintains power to the Eee PC when AC power is not connected. This allows use when moving temporarily between locations. Battery time varies by usage and by the specifications for this Eee PC. The battery pack cannot be disassembled and must be purchased as a single unit.

3 **Battery Lock - Manual**

The manual battery lock is used to keep the battery pack secured. Move the manual lock to the unlocked position to insert or remove the battery pack. Move the manual lock to the locked position after inserting the battery pack.

4 **Solid-State Disk & Memory Compartment**

The solid-state disk drive and memory are secured in a dedicated compartment.



The memory module in Eee PC (Easy DIMM) is for use with Eee PC only and is not compatible with other notebooks.

5 **Reset Button (Emergency)**

In case your operating system cannot properly turn OFF or restart, the reset button can be depressed with a pin or a straightened paper clip to restart the Eee PC.



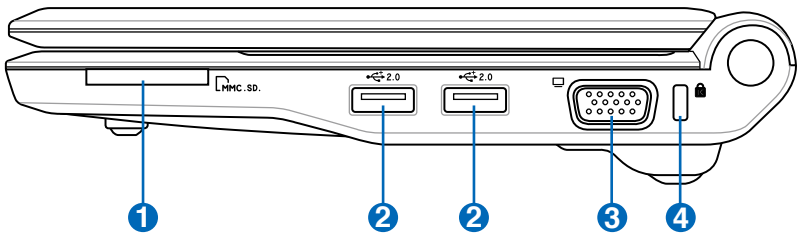
The reset button is not provided on Eee PC 4G Surf model.

6 **Microphone (Built-in)**

The built-in mono microphone can be used for skype, voice narrations, or simple audio recordings.

Right Side

Refer to the diagram below to identify the components on this side of the Eee PC.



1 Memory Card Slot

The built-in memory card reader can read MMC/SD cards from devices such as digital cameras, MP3 players, mobile phones, and PDAs.

2 USB Port (2.0/1.1)

The USB (Universal Serial Bus) port is compatible with USB 2.0 or USB 1.1 devices such as keyboards, pointing devices, cameras, and storage devices, connected in a series up to 12Mbits/sec (USB 1.1) and 480Mbits/sec (USB 2.0). USB allows many devices to run simultaneously on a single computer, with some peripherals acting as additional plug-in sites or hubs. Also, the USB supports hot-swapping function.

3 Display (Monitor) Output

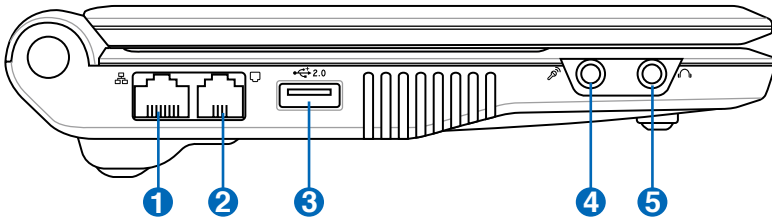
The 15-pin D-sub monitor port supports a standard VGA-compatible device such as a monitor or projector to allow viewing on a larger external display.

4 Kensington® Lock Port

The Kensington® lock port allows the Eee PC to be secured using Kensington® compatible security products. These security products usually include a metal cable and lock that prevent the Eee PC to be removed from a fixed object.

Left Side

Refer to the diagram below to identify the components on this side of the Eee PC.



1 LAN Port

The eight-pin RJ-45 LAN port (10/100M bit) supports a standard Ethernet cable for connection to a local network. The built-in connector allows convenient use without additional adapters.

2 Modem Port (optional)

The two-pin RJ-11 modem port supports a standard telephone cable. The internal modem supports up to 56K V.90 transfers. The built-in connector allows convenient use without additional adapters.



The built-in modem does not support the voltage used in digital phone systems. DO NOT connect the modem port to a digital phone system or else damage will occur to the Eee PC.

3 USB Port (2.0/1.1)

The USB (Universal Serial Bus) port is compatible with USB 2.0 or USB 1.1 devices such as keyboards, pointing devices, cameras, and storage devices, connected in a series up to 12Mbits/sec (USB 1.1) and 480Mbits/sec (USB 2.0). USB allows many devices to run simultaneously on a single computer, with some peripherals acting as additional plug-in sites or hubs. Also, it supports hot-swapping function.

4 Microphone Jack

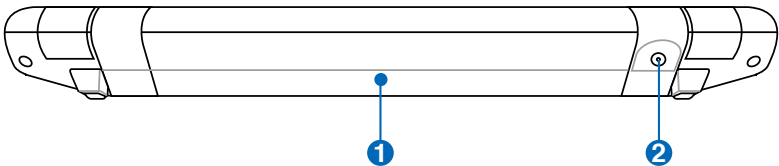
The microphone jack is designed to connect the microphone used for Skype, voice narrations, or simple audio recordings.

5 Headphone Output Jack

The 1/8" stereo headphone jack (3.55mm) connects the Eee PC's audio out signal to amplified speakers or headphones. Using this jack automatically disables the built-in speakers.

Rear Side

Refer to the diagram below to identify the components on this side of the Eee PC.



1 Battery Pack

The battery pack is automatically charged when connected to an AC power source and maintains power to the Eee PC when AC power is not connected. This allows use when moving temporarily between locations. Battery time varies by usage and by the specifications for this Eee PC. The battery pack cannot be disassembled and must be purchased as a single unit.

2 Power (DC) Input

The supplied power adapter converts AC power to DC power for use with this jack. Power supplied through this jack supplies power to the Eee PC and charges the internal battery pack. To prevent damage to the Eee PC and battery pack, always use the supplied power adapter.



CAUTION: MAY BECOME WARM TO HOT WHEN IN USE. BE SURE NOT TO COVER THE ADAPTER AND KEEP IT AWAY FROM YOUR BODY.

Power System

Touchpad Usage

Keyboard Usage

First Run Wizard

Operating Mode

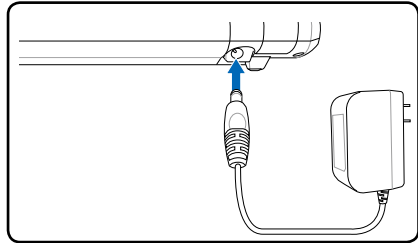
Shutdown

Getting Started

Power System

Using AC Power

The Eee PC power comprises two parts, the power adapter and the battery power system. The power adapter converts AC power from a wall outlet to the DC power required by the Eee PC. Your Eee PC comes with a universal AC-DC adapter for connection to any 100V-120V as well as 220V-240V outlets without setting switches or using power converters. Different countries may require an adapter to connect the provided US-standard AC power cord to a different standard. Most hotels will provide universal outlets to support different power cords as well as voltages. It is always best to ask an experienced traveler about AC outlet voltages before travelling.

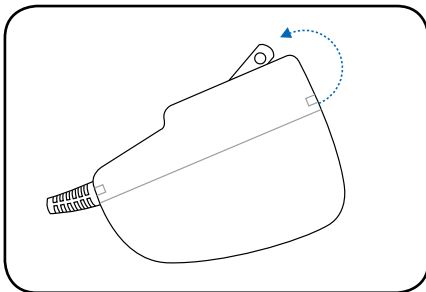


THE POWER ADAPTER MAY BECOME WARM TO HOT WHEN IN USE. BE SURE NOT TO COVER THE ADAPTER AND KEEP IT AWAY FROM YOUR BODY.

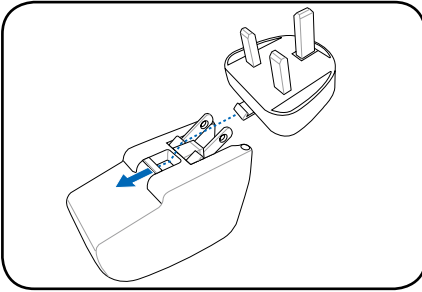
Installing the prong-plug adapter

Follow the instructions below to install the prong-plug adapter if needed.

1. Incline the prong slightly to a bevel angle.



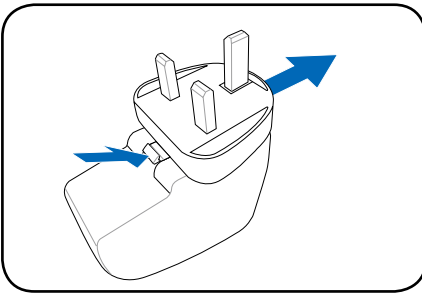
2. Align the plug and snap it in place.



Removing the prong-plug adapter

Follow the instruction below to remove the prong-plug adapter if needed.

- Press the retaining tab and snap the plug out.



This Eee PC may come with either a two or three-prong plug adapter depending on territory to fit your wall outlet.



Damage may occur if you use a different adapter to power the Eee PC or use the Eee PC's adapter to power other electrical devices. If there is smoke, burning scent, or extreme heat coming from the AC-DC adapter, seek servicing. Seek servicing if you suspect a faulty AC-DC adapter. You may damage both your battery pack(s) and the Eee PC with a faulty AC-DC adapter.

Using Battery Power

The Eee PC is designed to work with a removable battery pack. The battery pack consists of a set of battery cells housed together. A fully charged pack will provide several hours of battery life. Additional battery packs are optional and can be purchased separately through an Eee PC retailer. Remember to fully charge the battery before first use and whenever it is depleted to prolong battery life.

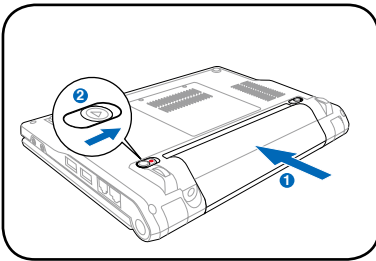
Installing and Removing the Battery Pack

Your Eee PC may not have its battery pack installed. If not, use the following procedures to install the battery pack.

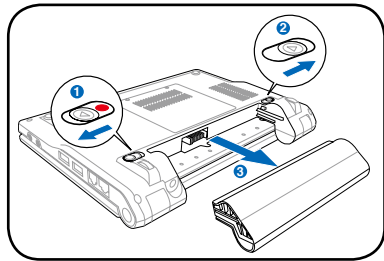


Never attempt to remove the battery pack while the Eee PC is turned ON, as this may result in the loss of working data.

To install the battery pack:



To remove the battery pack:



Only use battery packs and power adapters supplied with this Eee PC or specifically approved by the manufacturer or retailer for use with this model or else damage may occur to the Eee PC.




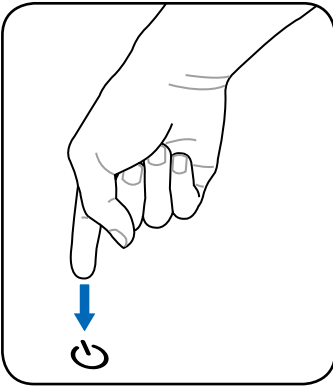
For safety reasons, DO NOT throw the battery in fire, DO NOT short circuit the contacts, and DO NOT disassemble the battery. If there is any abnormal operation or damage to the battery pack caused by impact, turn OFF the Eee PC and contact an authorized service center.




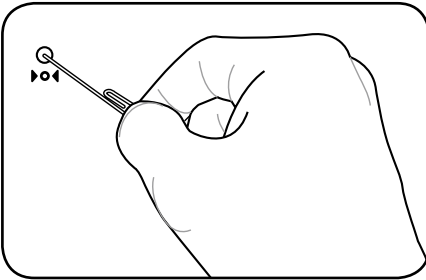
Emergency Shutdown & Reset

In case your operating system cannot properly turn OFF or restart, there are additional ways to shutdown and reset your Eee PC:

Shutdown: Hold the power button  until the system shuts down.



Reset: Press the reset button .



Use a pin or a straightened paper clip to press the power switch.



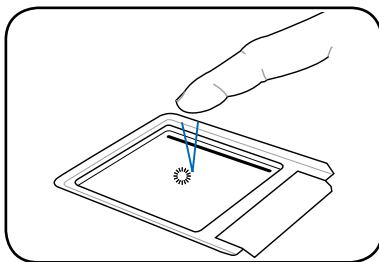
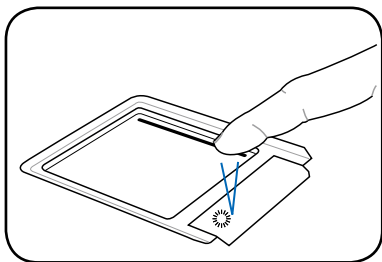
DO NOT use emergency shutdown/reset while data is being written or read; doing so can result in loss or destruction of your data.



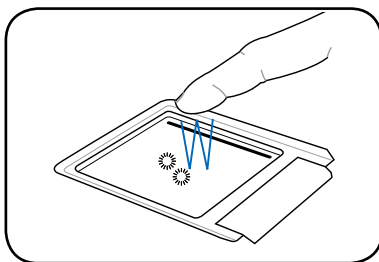
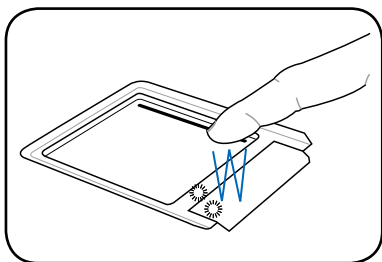
The reset button is not provided on Eee PC 4G Surf model.

Touchpad Usage

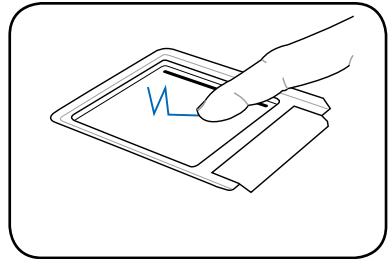
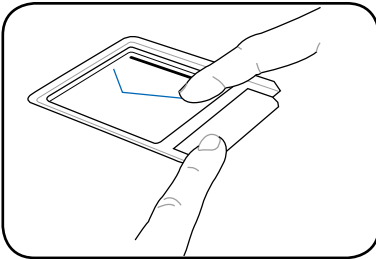
Clicking/Tapping - With the cursor over an item, press the left button or use your fingertip to touch the touchpad lightly, keeping your finger on the touchpad until the item is selected. The selected item will change color. The following 2 illustrations produce the same results.



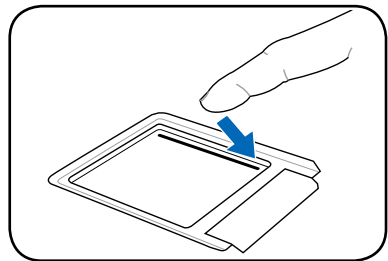
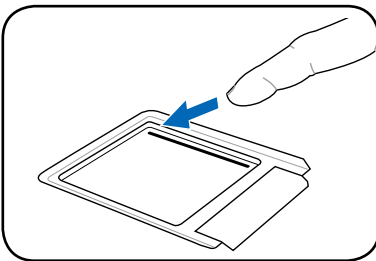
Double-clicking/Double-tapping - This is a common skill for launching a program directly from the corresponding icon you select. Move the cursor over the icon you wish to execute, press the left button or tap the pad twice in rapid succession, and the system launches the corresponding program. If the interval between the clicks or taps is too long, the operation will not be executed. The following 2 illustrations produce the same results.



Dragging - Dragging means to pick up an item and place it anywhere on the screen you wish. You can move the cursor over the item you select, and while keeping the left button depressed, moving the cursor to the desired location, then release the button. Or, you can simply double-tap on the item and hold while dragging the item with your fingertip. The following illustrations produce the same results.



Scrolling - Slide your finger up or down on the right side of the touchpad to scroll a window up or down. If your display window includes several sub-windows, move the cursor on that pane before scrolling.



Keyboard Usage

Special Function Keys

The following defines the colored hot keys on the Eee PC's keyboard. The colored commands can only be accessed by first pressing and holding the function key while pressing a key with a colored command. Some function icons appear on the OS taskbar after activation.



The Hot Key locations on the function keys may vary depending on model but the functions should remain the same. Follow the icons whenever your hot key locations do not match the manual.



zzZ Icon (F1): Places the Eee PC in suspend mode (Save-to-RAM).



Radio Tower (F2): Wireless Models Only: Toggles the internal wireless LAN ON or OFF with an on-screen-display. When enabled, the corresponding wireless indicator will light.



Sun Down Icon (F3): Decreases the display brightness.



Sun Up Icon (F4): Increases the display brightness.



LCD/Monitor Icons (F5): Toggles between the Eee PC's LCD display and an external monitor in this series: Eee PC LCD -> External Monitor -> Both.



Dual display mode does not work in 256 Colors, and supports a resolution of 800 x 480 pixels only.



Connect an external monitor before booting up the Eee PC.



Task Manager Icon (F6): Initiates the Task Manager to view the application process or terminates applications.



Crossed Speaker Icon (F7): Mutes the speaker.



Speaker Down Icon (F8): Decreases speaker volume.



Speaker Up Icon (F9): Increases the speaker volume.



Num Lk (F11): Toggles the numeric keypad (number lock) ON and OFF. Allows use of a larger portion of the keyboard for number entering.



Scr Lk (F12): Toggles the "Scroll Lock" ON and OFF. Allows you to use a larger portion of the keyboard for cell navigation.



Prt Sc (Ins): Toggles the "Print Screen" key to initiate screen capture utility to capture, save, or print the contents of entire desktop.



Pg Up (↑): Press to scroll up in documents or the web browser.



Pg Dn (↓): Press to scroll down in documents or the web browser.



Home (←): Press to move the cursor to the beginning of the line.



End (→): Press to move the cursor to the end of the line.



House icon: Returns to the main menu.

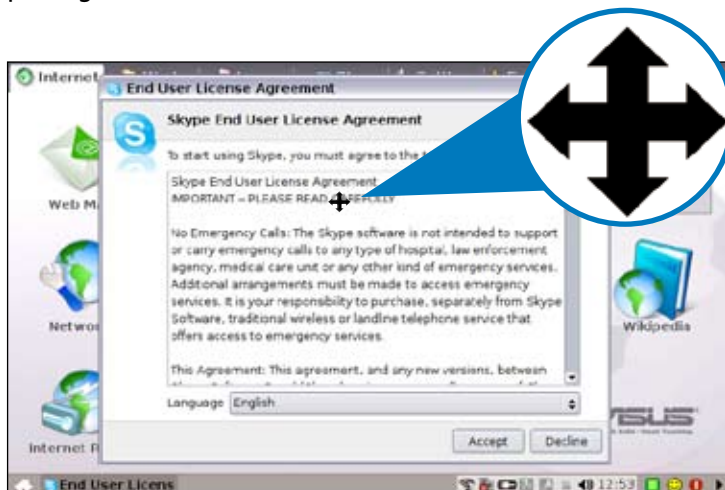


Menu with cursor icon : Activates the properties menu and is equivalent to right-clicking the touchpad/mouse on an object.

Adjust the window

If the application window is not in the center of the screen and you want to adjust the position of the window, follow the instructions below to adjust the window position.

1. Hold <Alt> and the touchpad left button to turn the cursor into a cross arrow.
2. Use the other finger to move on the touchpad, dragging and placing the window as desired.



First Run Wizard

For the first time you start your Eee PC, the First Run Wizard will auto-launch and lead you through setting up your preferences and some basic information. Follow the wizard instructions to finish the initiation.

1. Toggle **I agree with this license** and click **Next** to continue.



2. Select your keyboard type and click **Next** to continue.



3. Enter your **User Name**. Click **Next** to continue.



4. Enter your **Password** and enter again to confirm the password. Click **Next** to continue.



Click the box before **Log me in automatically when system starts up** if you want to log in without entering your password. Doing so will allow people to access your computer without permission.

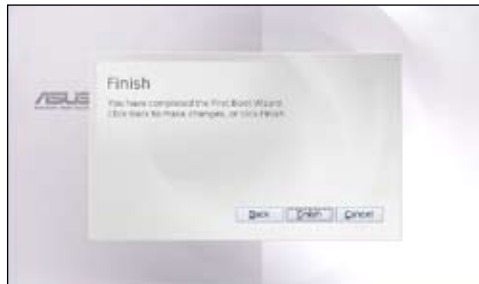


Keep your password in mind! You have to pass the password check every time you start up your Eee PC if you select not to log in automatically.

5. Click to expand the drop-down menu and locate the city you are in or the nearest city in your time zone. Adjust the correct date and your local time. Click **Next** to continue.



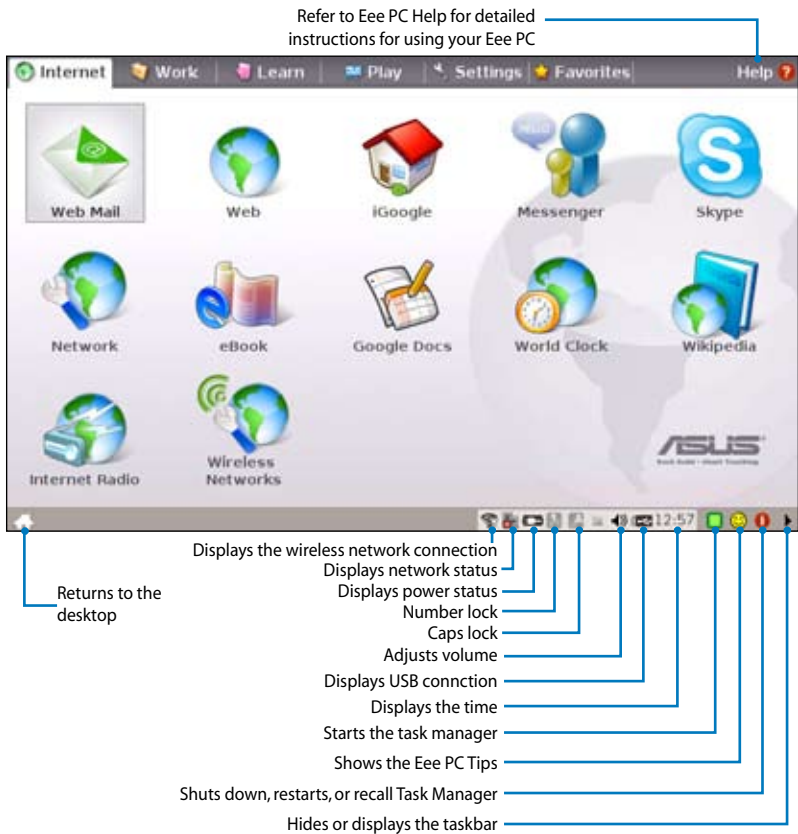
6. After you complete all the wizard instructions, click **Finish** to restart the system, or click **Back** to make changes.



Operating Mode


The system is designed with an operating mode that is function-oriented and clearly divides functions into six categories, **Internet**, **Work**, **Learn**, **Play**, **Settings**, **Favorites**. The lucid desktop categorization is convenient for first-time users to operate this Eee PC and enables sophisticated users to more easily locate and initiate applications.

Switch the display category by clicking the category tabs on the top, at which time the screen changes to the selected category and shows pertinent items.



Shutdown

Do the following instructions to turn down your Eee PC.

1. Click the red power switch  on the taskbar.
Or, click **Instant Shutdown** from the **Settings** tab and select **Shutdown**.
Or, press the power switch of the Eee PC directly.
2. Select **Shut Down** from the dialog box.
3. Select **OK** to proceed.



Internet

Work

Learn

Play



Settings

Favorites

Using the Eee PC

Internet

Configuring a wireless network connection

1. Press  +  (<Fn> + <F2>) to activate the wireless LAN function.



2. Click **Wireless Networks** from **Internet** tab.



3. Select the wireless access point you want to connect to from the list and click **Connect** to build the connection.



Ensure that the box before **Enable wireless** is checked.

4. When connecting, you may have to enter a password.





5. After a connection has been established, the connection is shown on the list.



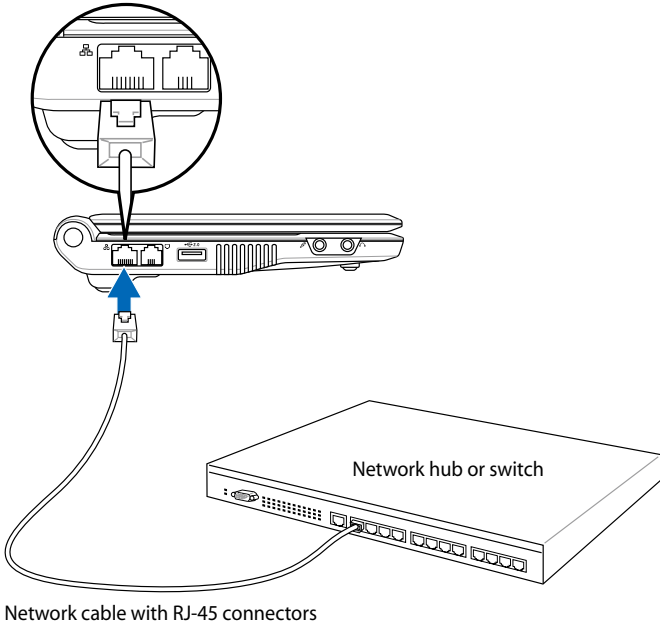
6. You can see the wireless signal strength bars on the OS taskbar.



In Windows XP environment, the wireless connection icon disappears when you disable the wireless LAN by pressing  +  (<Fn> + <F2>). Activate the wireless LAN function before configuring a wireless network connection.

Configuring a network connection

If you want to obtain network access, connect the network cable, with RJ-45 connectors on each end, to the network port on the Eee PC and the other end to a hub or switch. The illustration below is the example of your Eee PC connected to a network hub or switch for use with the built-in Ethernet controller. Connect to network before enjoying all the network services and functions in Eee PC.



Local Area Network

Using a dynamic IP:

1. From the **Internet** tab, select **Network** to start the configuration.



2. Click **Create** to create a network connection.



3. Select the type of connection you are using and click **Next**.



4. Toggle the first option Dynamic IP address (DHCP) and click **Next**.



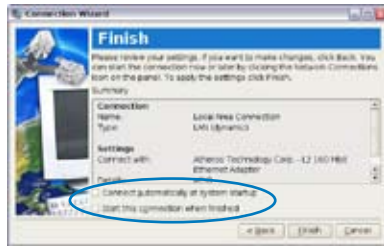
5. Enter a name for this connection and click **Next**.



6. Click **Finish** to apply the settings or click **Back** to make changes.



Click the box before **Connect automatically at system startup** or before the box **Start this connection when finished** based on your needs.



Using a static IP:

1. Repeat the step 1~3 of Using a dynamic IP to start the static IP network configuration.

2. Toggle the second option Static IP address and click **Next**.



3. Enter the IP address, Subnet mask and Gateway from your service provider.



4. There is no need to enter the DNS and WINS address unless you want to override the server provided DNS server address. If so, enter the preferred DNS Server address, alternative address and WINS address of your service provider.



5. Enter the DNS domain name for your network or click **Next** to proceed directly.



6. Enter a name for this connection and click **Next**.



7. Click **Finish** to apply the settings or click **Back** to make changes.



Contact your service provider if you have problem connecting to the internet.

Point-to-Point Protocol over Ethernet (PPPoE)

1. Repeat the step 1~2 of Using a static IP to start the PPPoE network configuraton.
2. Select the type of connection you are using and click **Next**.



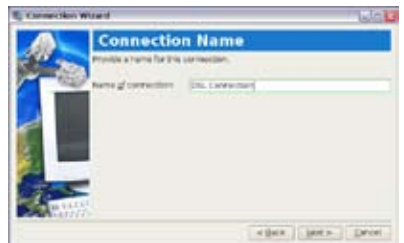
3. Select the hardware that you want to use to make your connection and click **Next**.



4. Enter your user name and password and click **Next**.



5. Enter a name for this connection and click **Next**.



6. Click **Finish** to apply the settings or click **Back** to make changes.



Select **Connect automatically at system startup** or **Start this connection when finished** based on your individual configuration.

Wireless Point-to-Point Protocol over Ethernet

1. Repeat the step 1~2 of Using a static IP to start the wireless PPPoE network configurator.
2. Select the type of connection you are using and click **Next**.



3. Select the hardware that you want to use to make your connection and click **Next**.



5. Enter the wireless channel information and click **Next**.



6. Set the encryption information for the wireless connection and click **Next**.



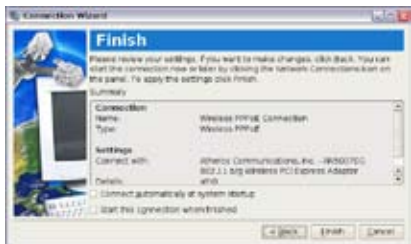
7. Enter your user name and password and click **Next**.



8. Enter a name for this connection and click **Next**.

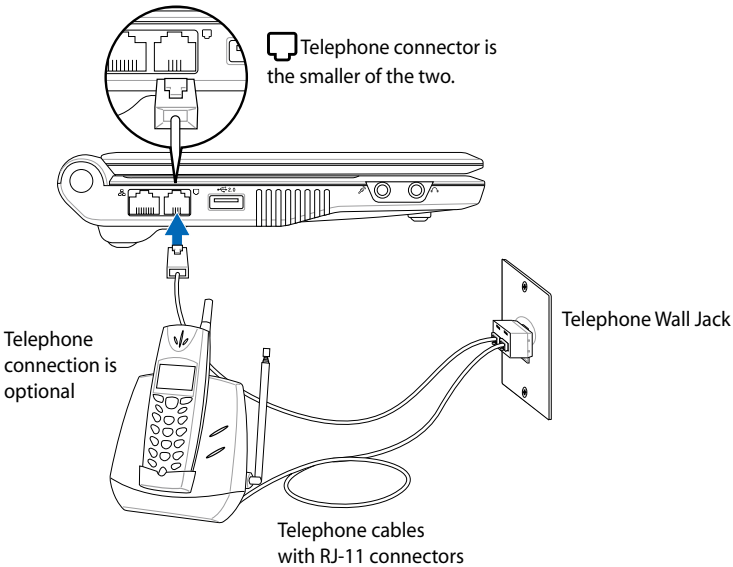


9. Click **Finish** to apply the settings or click **Back** to make changes.



Dial-up (Optional)

The telephone wire used to connect the Eee PC's internal modem should have either two or four wires (only two wires (telephone line #1) is used by the modem) and should have an RJ-11 connector on both ends. Connect one end to the modem port and the other to an analog telephone wall socket (as found in residential buildings).



Only use analog telephone outlets. The built-in modem does not support voltages used in digital phone systems. **DO NOT** connect the RJ-11 to digital phone systems found in many commercial buildings or else damage will occur!

6. Enter a name for this connection and click **Next**.

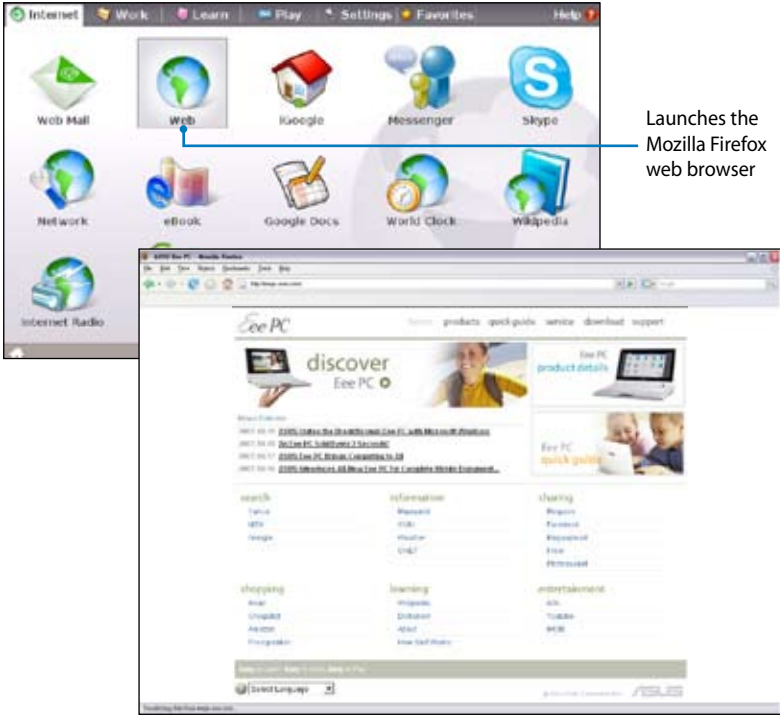


7. Click **Finish** to apply the settings or click **Back** to make changes.



Browsing web pages

After you finish the network setup, click **Web** from the Internet tab to launch the Mozilla Firefox web browser and start enjoying net surfing.



Launches the Mozilla Firefox web browser



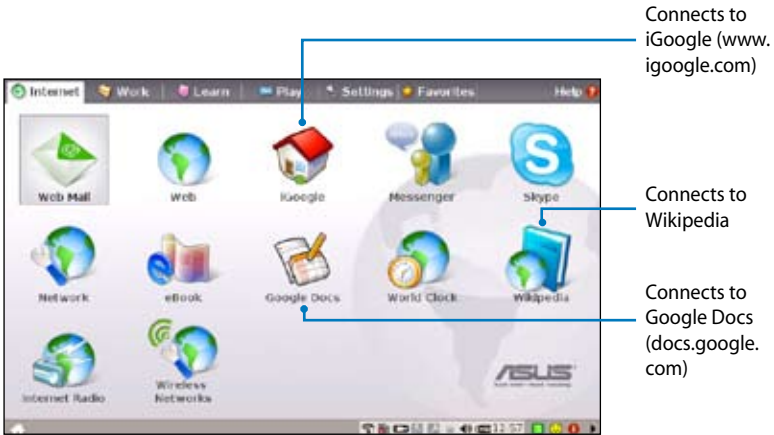
Visit our Eee PC homepage (<http://eeeecp.asus.com>) to obtain the latest information and register at <http://vip.asus.com> for full service of your Eee PC.



If you think the browser font size too small to read, go to **View > Text Size** to adjust.

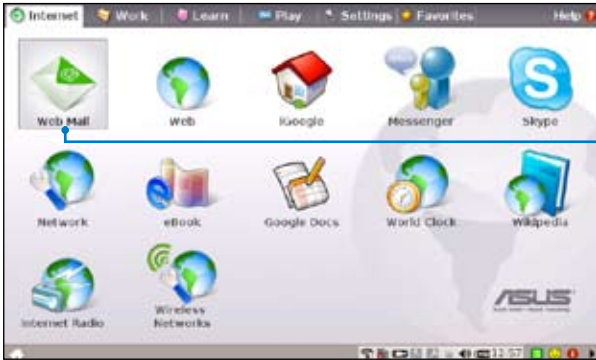
Enjoying free resources

Eee PC thoughtfully builds several resources shortcuts, including **iGoogle**, **Google Docs**, and **Wikipedia**. Click an item and enjoy a charge-free service through Mozilla Firefox web browser.



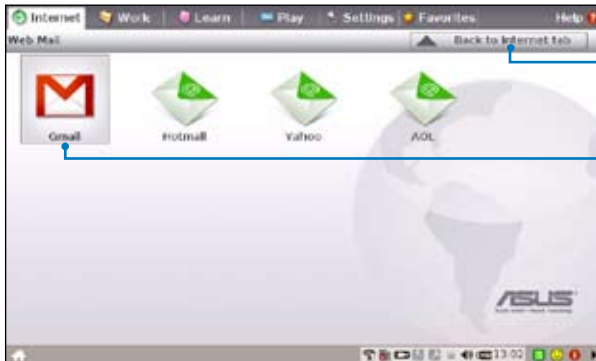
Accessing E-mail

Select **Web Mail** to display the webmail accesses, including Gmail, Hotmail, Yahoo Mail, and AOL Mail.



Opens the built-in webmail list

Select your e-mail service provider. If you do not use any of the displayed e-mail provider, click the **Back to Internet tab** button and select **Web** to log onto your own e-mail account.



Click to return to the Internet tab

Click to link to the webmail homepage

Chatting with friends

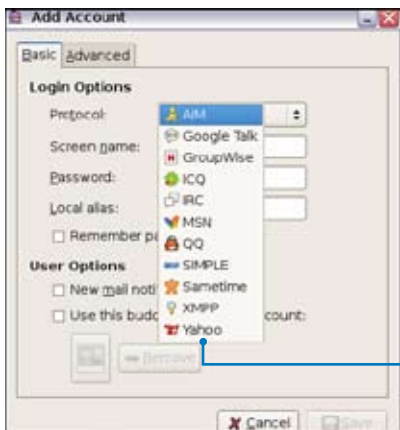
Messenger

1. Select **Messenger** from the Internet tab and the Welcome to Pidgin screen displays. Press the **Add** button to configure your instant messaging account.



Press to select an instant messaging service

2. Select an instant messaging service you are using from the drop-down list and fill out your password along with other necessary information to login your account.



Select an instant messaging service



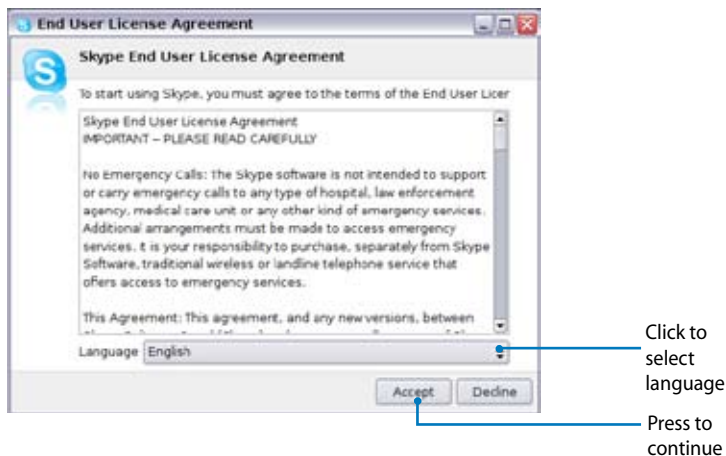
If you do not have an IM account, apply one from the service providers. If you have multiple IM accounts from different service providers, press **Add** button again to add and configure more IM accounts.

Skype™

1. Select **Skype** from the Internet tab and start chatting through Skype.



2. Select your preferred language and press **Accept** button to agree to the end user license agreement.



3. Enter your Skype name and password to login.

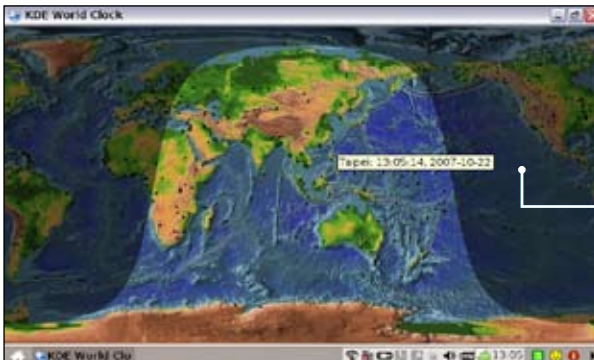
Checking the World Clock

1. Select **World Clock** to start the KDE world clock software.



Starts the KDE World Clock

2. Major cities and territories are marked on the map in black. When you move the cursor over the map, the screen automatically displays the city name and its local time wherever you leave the cursor.



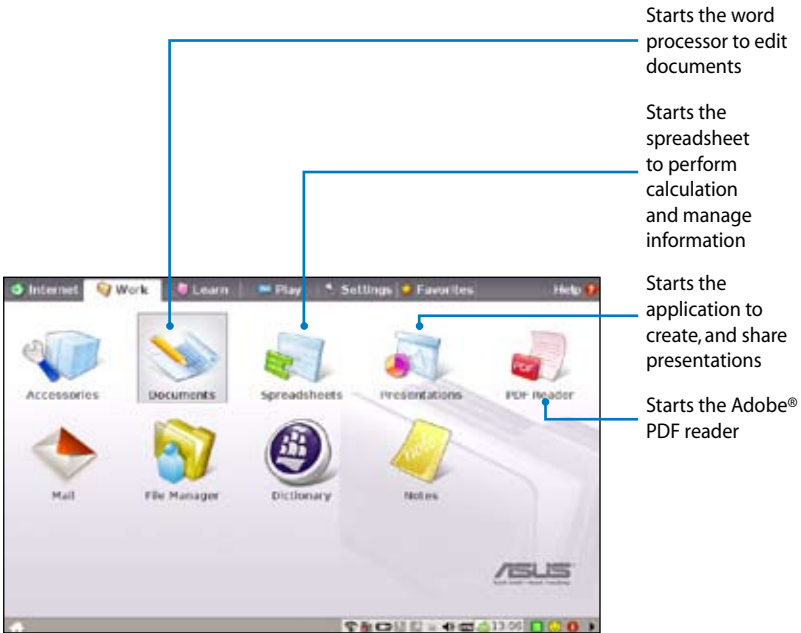
The city name and respective local time appears

Work

Office applications

Documents/Spreadsheets/Presentations/PDF Reader

The Work tab includes several office software items like **Documents**, **Spreadsheets**, **Presentations**, and **PDF Reader**. Some applications may require setup before use. Follow the steps as provided by the respective wizard to finish the initialization and get your jobs done more efficiently.



If you have problems using these applications, click **Help** on the top right corner and select **Work** tab for detailed instructions.

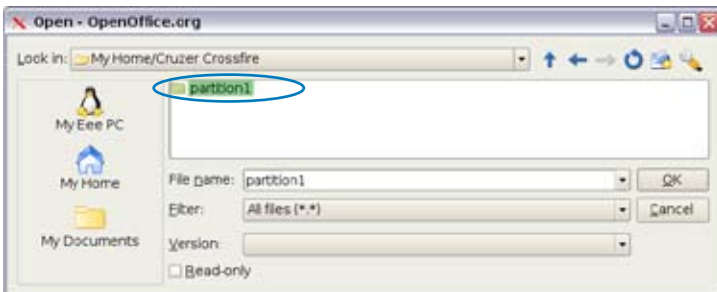
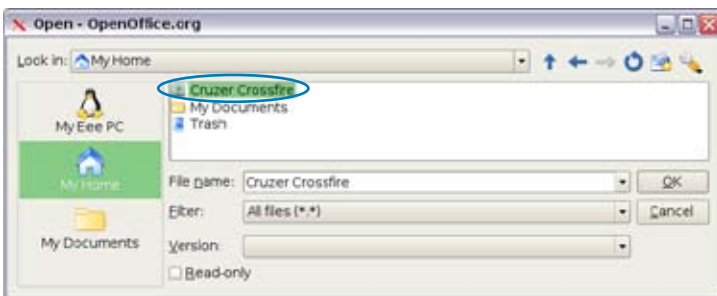
Accessing files

The following example describes how to locate and open your document from the connected external storage device:

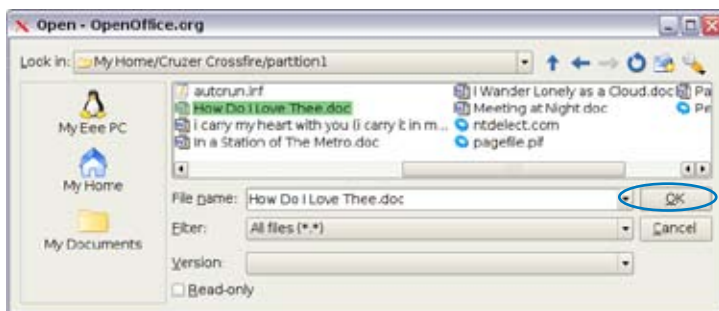
1. Double-click Documents to start **OpenOffice.org Writer**.
2. Click **File** and select **Open**, or press <Ctrl> + <O>.



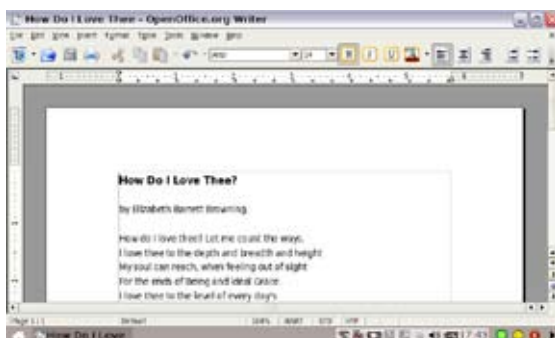
3. At the prompt, click **My Home** on the left and select **Removable Disk** (may be labeled as your USB storage brand name) to enter the sub-directory (may be labeled as FLASH or partition1, etc.).



4. Double-click the folder to display the files within. Select the desired file, and click **OK** to open.



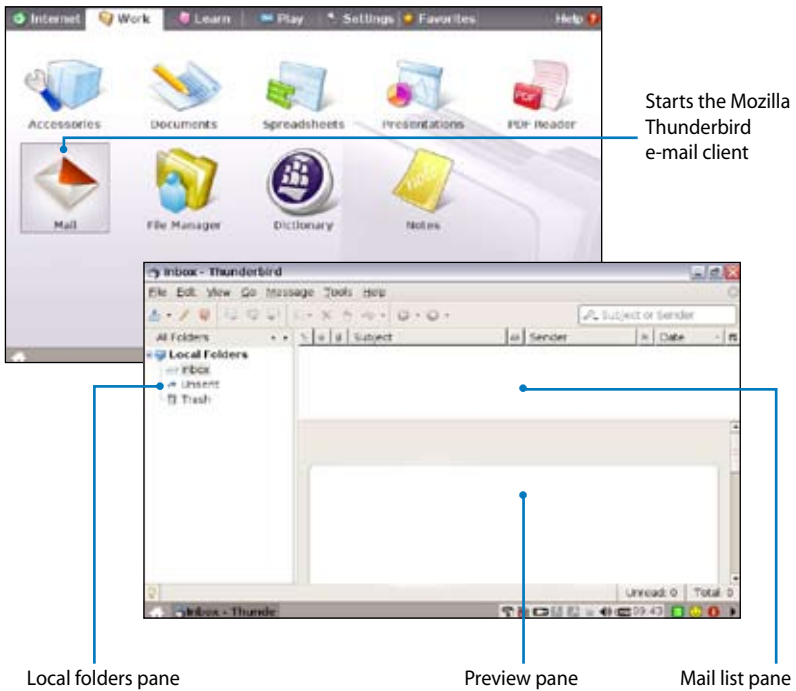
5. After the file is opened, you can start editing your document and doing your job.



For other office applications, follow the general steps above to access files.

Mail

The Mozilla Thunderbird e-mail client allows to import preferences, account settings, address books, and other data from an existing account in your original personal computer or notebook. Follow the Account Wizard for new account setup.

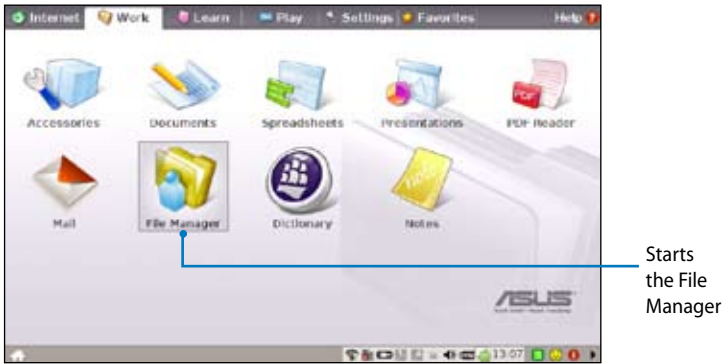


Contact your service provider If you do not know the incoming and outgoing server address of your e-mail account.

Management software

Your Eee PC includes two management-related applications.

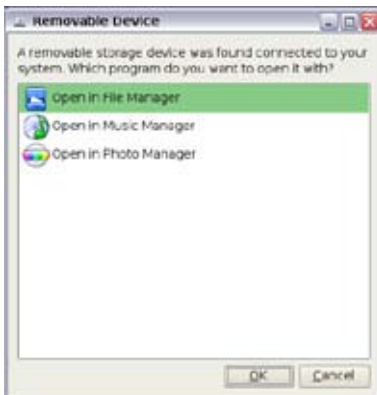
- 1. **File Manager** provides an overview of all your files and enables easy management of data.



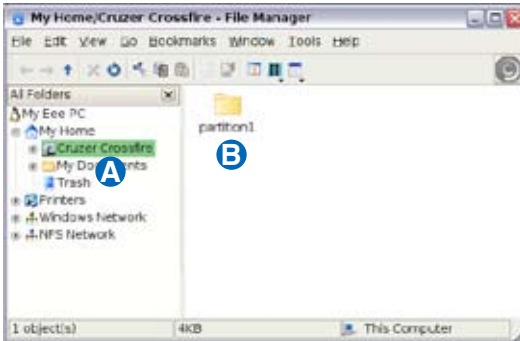
Eee PC supports file compression in a zip and tgz file format only, and file extraction from zip, gz, tar, and rar formats.

To locate and open your file:

- 1. Connect your USB flash memory disk or USB portable hard disk drive containing desired data to your Eee PC.
- 2. Highlight and select **Open in File Manager** at the prompt.




3. (A) Click **Removable Disk** (may be labeled as your disk drive brand name) in the left directory tree pane, and (B) double-click the folder shown in the right pane.

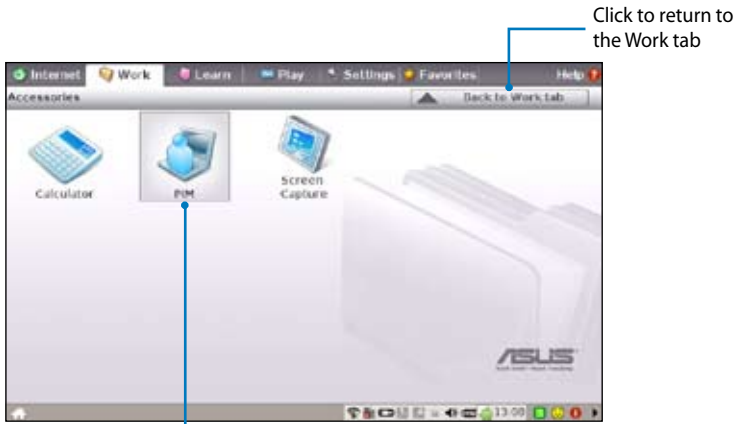
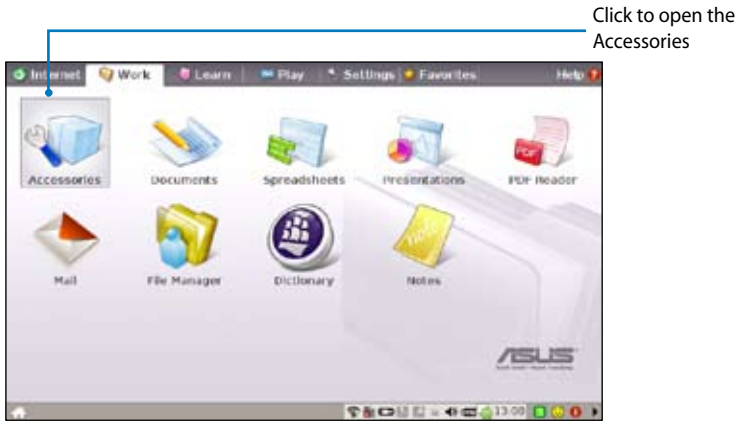


4. All the files and folders in your USB external storage device are shown in the right pane. Locate the desired file and double-click it to open.



- Use the directory tree in the left pane to locate files more quickly if numerous folders are listed.
- To remove your connecting the USB device, right click the USB icon  on the OS taskbar and select **Safely remove**.

II. PIM (Personal Information Manager) helps manage personal information like appointments, to-do items and contacts.



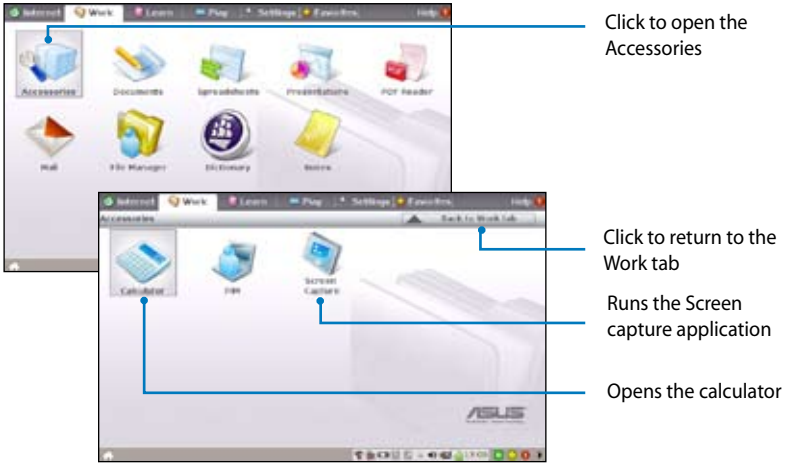
Select PIM to initiate KDE Personal Information Manager

Accessories & Dictionary

The bundled accessories, **Calculator** and **Screen Capture**, are convenient and easy to use; the built-in **Dictionary** prevents you from lost in translation.

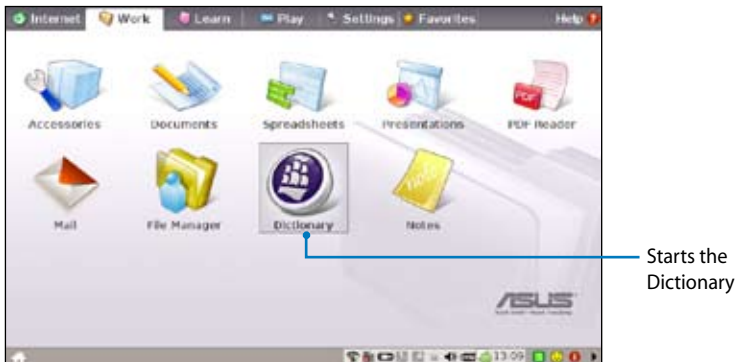
Calculator and Screen Capture

To start these tools:



Press + (<Fn> + <Prt Sc>) to initiate the screen capture tool directly and capture the full screen.

Dictionary



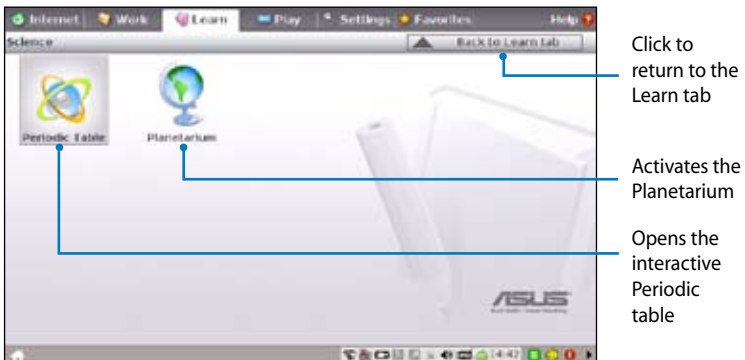
Learn

Science

After entering Science, you will find the options of the interactive Periodic Table and Planetarium. Move the cursor over and start your science learning.

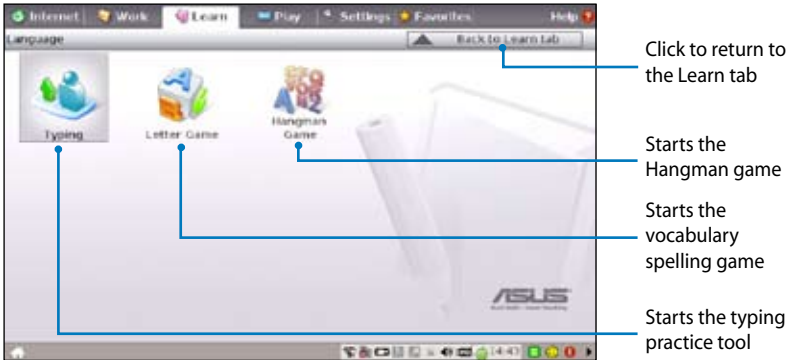


1. **Periodic Table** provides miscellaneous information, including picture, energy information, chemical data, and atom model for all elements. Click any wanted element and know more.
2. **Planetarium** projects and simulates the motions of the heavenly bodies, and marks constellations with latitude and longitude.



Language

Several English learning games are included in **Language**, providing entertaining exercises for English typing and spelling.



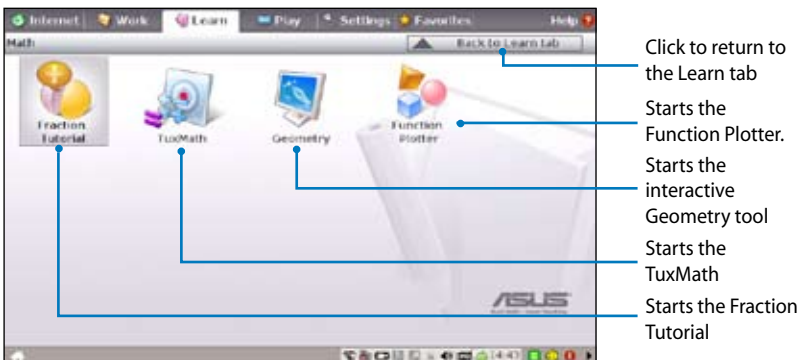
Math

Study fractions with your personal tutor in Eee PC. Fraction Tutorial clearly demonstrates and teaches you fractions.

TuxMath teaches math more fun, teaching math by incorporating a shooting game.

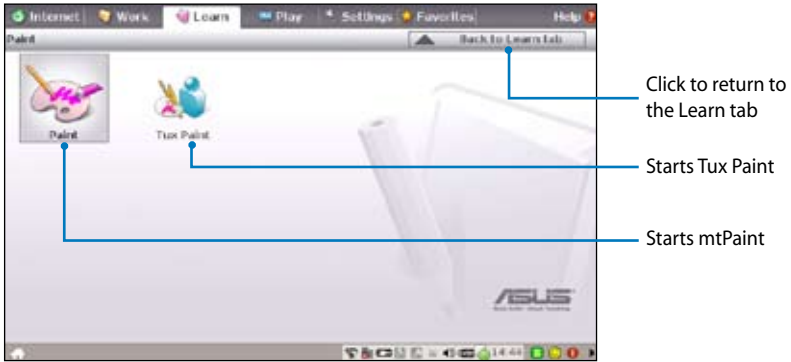
The Geometry tool allows drawing objects like points, lines, polygons, etc. to construct spatial objects.

Function Plotter is a useful tool to plot different function expressions. You can zoom in and out the corresponding graph.



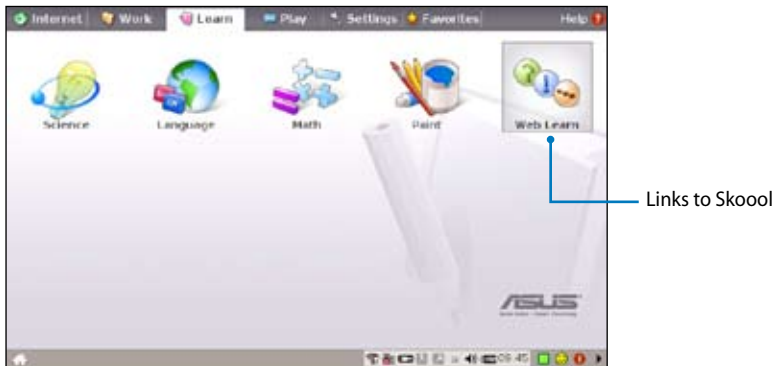
Paint

Paint includes an image editing program (**Paint**) and a drawing program (**Tux Paint**).



Web Learn

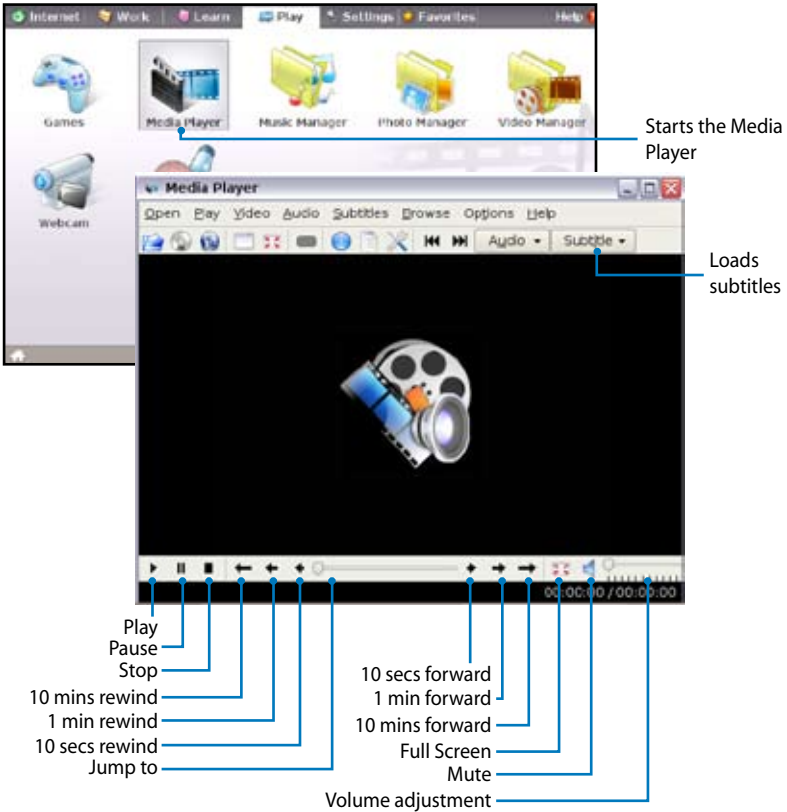
This is a shortcut to **Skool**. Double-click the item to link to Skool interactive learning site (www.skool.ie).



Play

Media Player

Enjoy your music and movies with the **Media Player**.



Move the cursor over the items on the user interface, and the pop out message would show the function of the button or the slider.

Music Manager

The built-in music manager helps you arrange your multi-media data in a well-organized fashion.

Starts the Music Manager

Drag and drop to create the playlists

- Shows the connected media device
- Locates your media files
- Shows your playlists
- Displays your collection
- Shows the track playing, newest albums and favorite albums



Connect your iPod to your Eee PC and click the Media Device tab to show the playlists in your iPod. You can drag and drop the wanted files to create your playlist in the right pane.



- Closing the main window only minimizes the music manager on the OS taskbar. Quit the music manager by clicking **Actions > Quit**.
- All rights of the built-in music samples are reserved by Michelle Chen. Unauthorized copy, reproduction, broadcasting and public performance are prohibited.

Photo Manager

Manage, view, and edit image files with the Photo Manager.

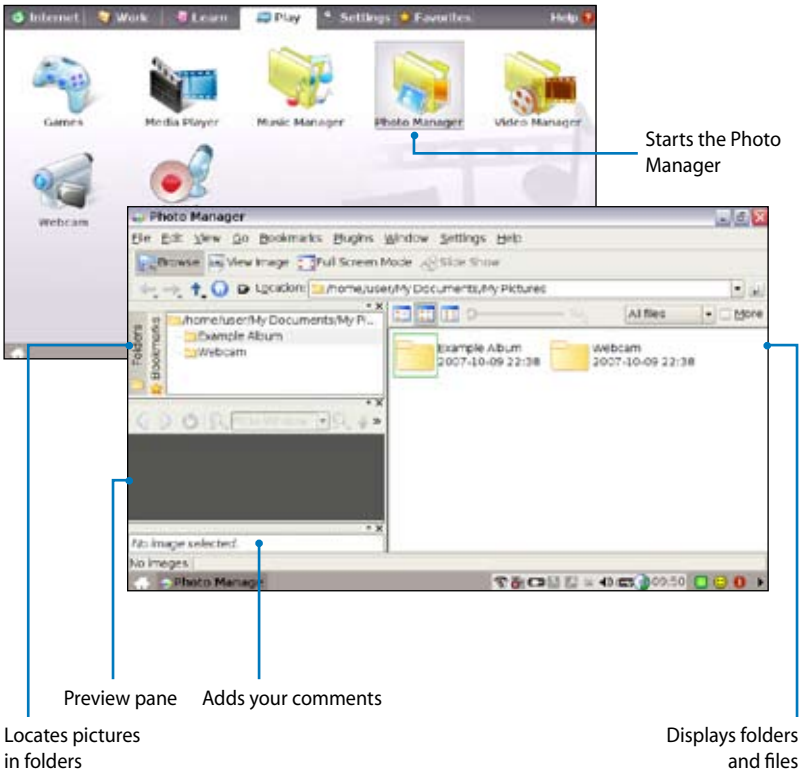
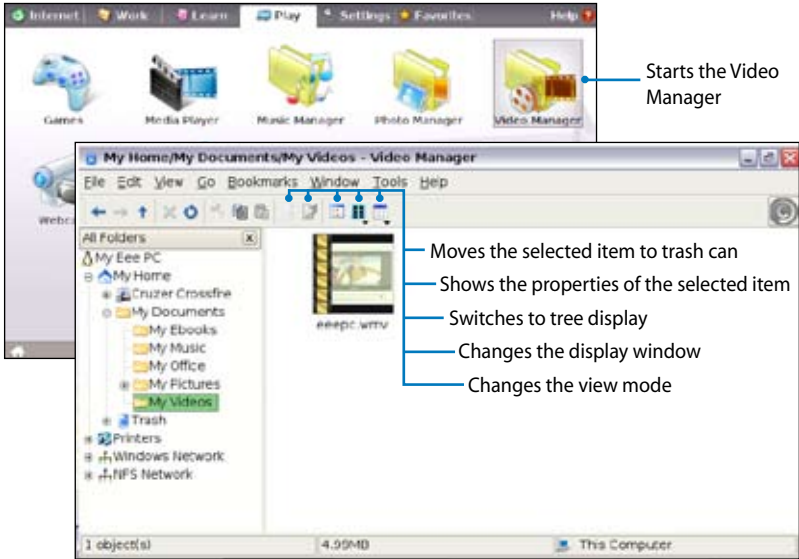


Photo Manager supports image files in PNG, JPG, TIF, TIFF, GIF, BMP, XPM, PPM, PNM, XCT, PCX format.

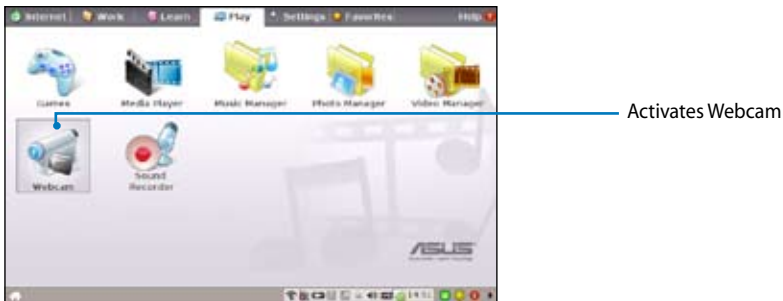
Video Manager



ASUS Eee PC supports video and audio files in the following format: wmv, DVD, MPEG1, MPEG2, MPEG4 SP, Xvid, mp3, wma, ogg, wav, MPEG4 AAC, PCM, Dolby digital (2.0 decode) format. The actual supported codecs vary depending on model.

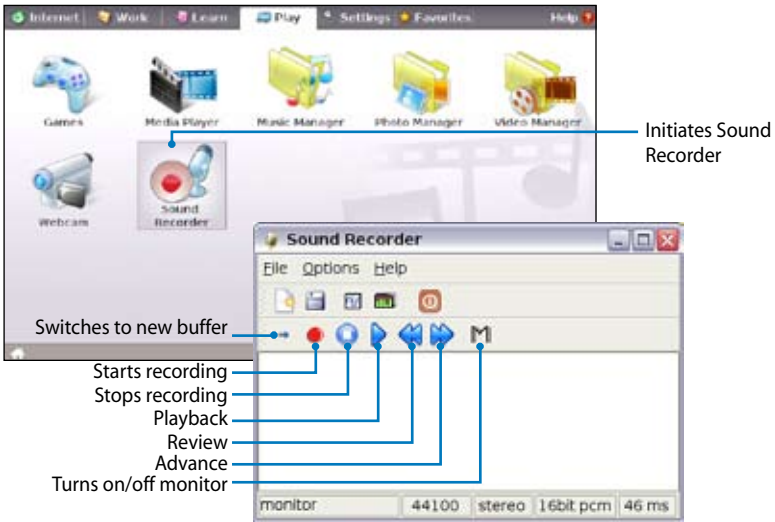
Webcam (optional)

Click **Webcam** and start video recording or image capture.



Sound Recorder

Allows you to record a sound clip.



Games

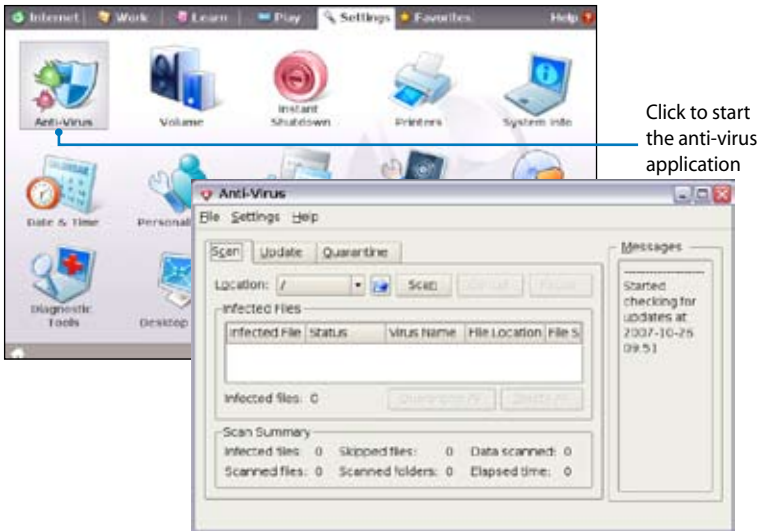
Select an available game and have fun.



Settings

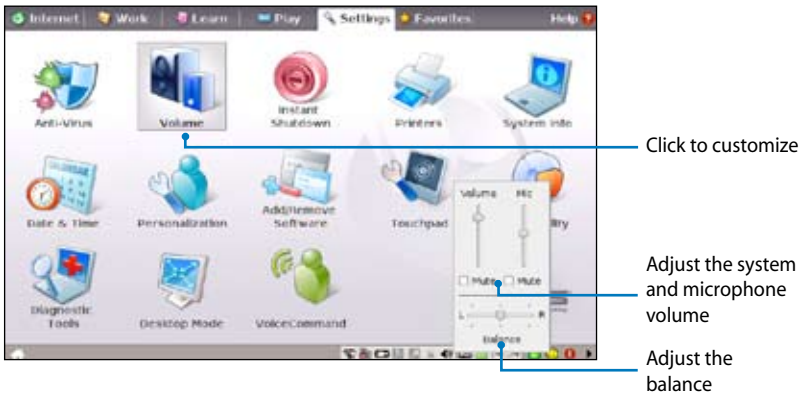
Anti-Virus

From the **Settings** tab, select **Anti-Virus** and perform virus scanning to protect your Eee PC.



Volume

Click the speakers icon to open the control panel. Adjust the system volume and balance by moving the sliders.



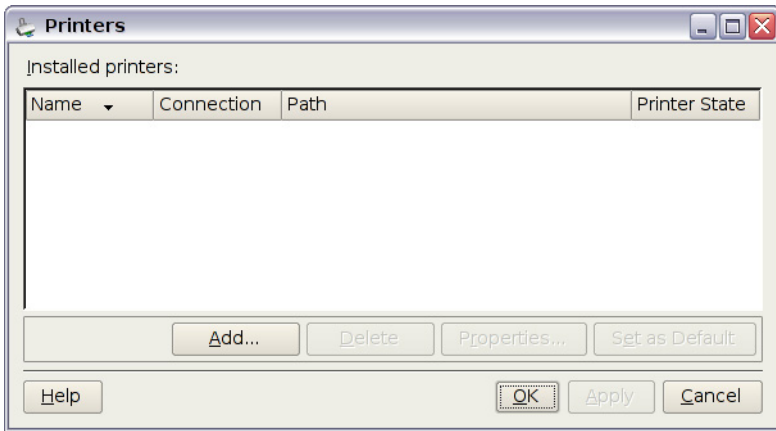
Instant Shutdown

Click **Instant Shutdown** and select an action from the dialog box shown below. You can activate the task manager, put the system in standby, restart, or shut down the system.



Printers

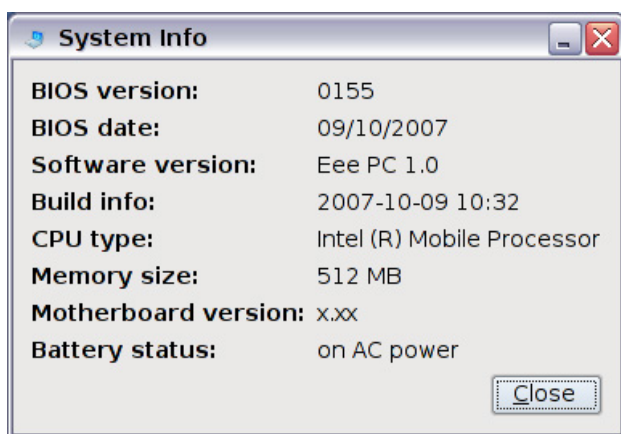
To setup your printer, double-click **Printers** and press **Add** to add a new printer. The installed printers display in the window.



Refer to the QVL in Appendix or visit our website for the latest qualified vendor for the printers.

System Info

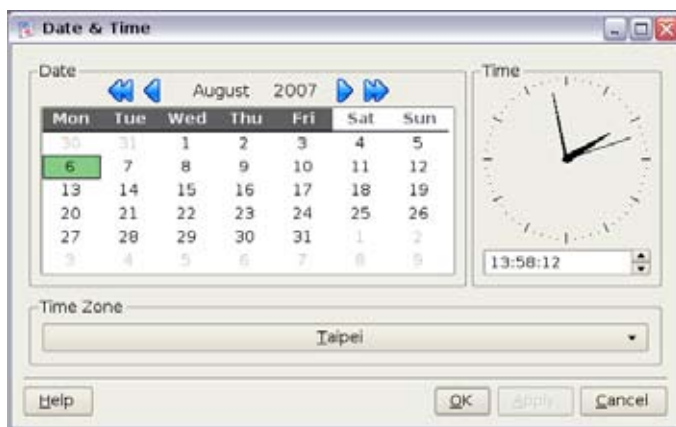
This option displays the system information of your Eee PC.



The displayed system information differs depending on model.

Date & Time

Adjusts the system date and time of your Eee PC.



Personalization

Select **Personalization** to renew your information or change your preferences.



Add/Remove Software

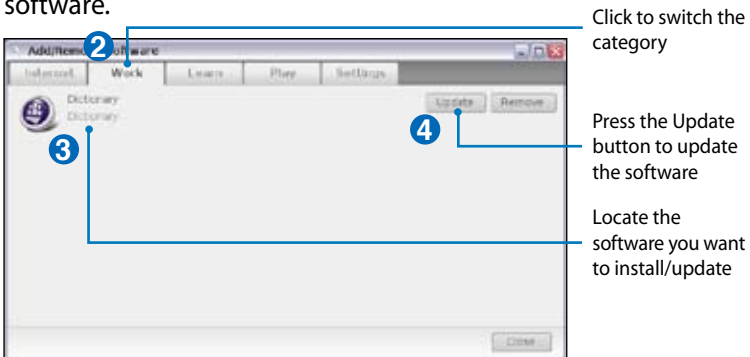
You can download and install software from our server with network access. Follow the instructions below to install software. You can remove the software you install from our server later when they are no longer needed.



Removing the pre-installed software is not allowed.

To install new software or update the existing software:

1. Make sure you have connected to network.
2. Click the tab on the top to switch the category and the screen will display the available software on the server.
3. Locate the software you want to install/update.
4. Click the **Install/Update** button to install/update the selected software.



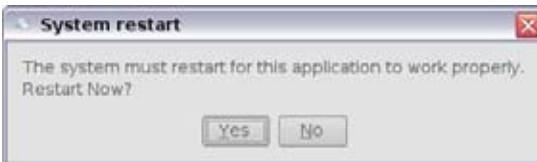
5. Click **OK** to confirm the installation/update.



6. Your Eee PC starts the download and installs/updates the selected software from our server..



7. Click **Yes** to restart the system for the installed/updated application to work properly.



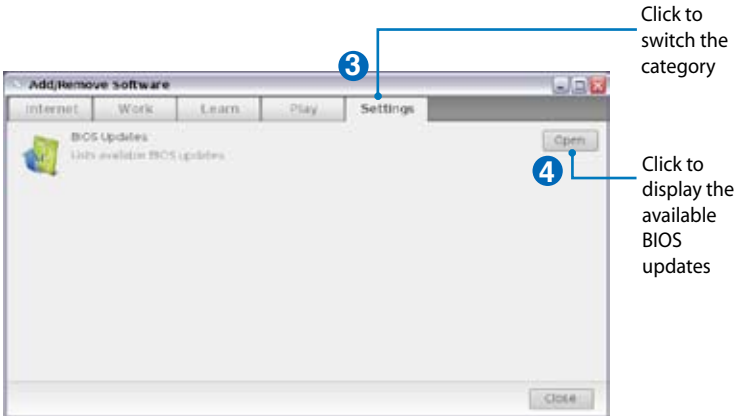
BIOS update

To update the BIOS:

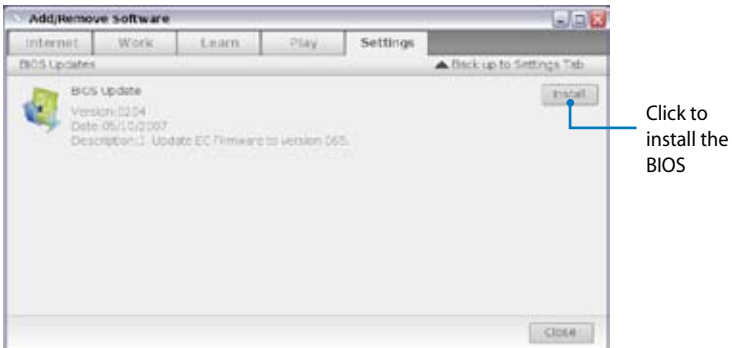


DO NOT shut down or reset the system or unplug the power cord while updating the BIOS! Doing so would cause the system boot failure!

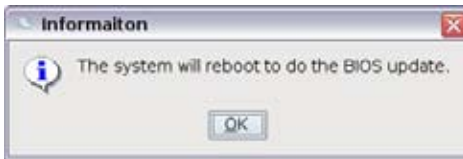
1. Ensure you are connected to a network.
2. Go to **Settings > Add/Remove Software**.
3. Click the **Settings** tab on the top to switch the category.
4. Click the **Open** button in BIOS Updates



5. Locate the latest BIOS and click the **Install** button to update the BIOS.



5. Click **OK** to reboot and update the BIOS.



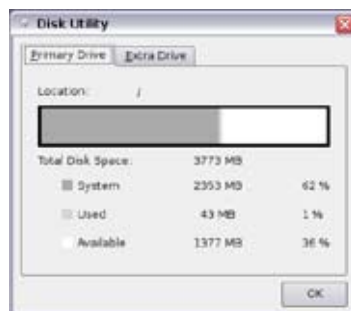
Touchpad

Edit your touchpad preferences by clicking **Touchpad**. You can adjust touchpad sensitivity, tapping time, and scrolling settings.



Disk Utility

Selecting **Disk Utility** allows you to check your Eee PC SSD condition including total disk space, the used space, and the remaining space. Click the tabs to switch the displayed disk drive.



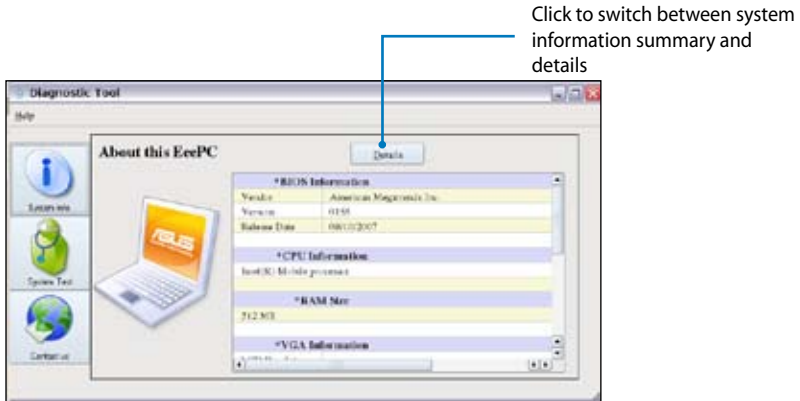
- Data in My Documents is stored in the Primary Drive and files saved to My Documents 2 are located in the Extra Drive.
- Extra Drive may not be available for all Eee PC models.
- The disk space varies depending on model.

Diagnostic Tools

The **Diagnostic Tool** helps you with easy trouble-shooting.

System Info.

Click the **System Info.** button on the left to display the system information.



The system information varies depending on model.

System Test

Click the **System Test** button on the left to start the system checkup. Select the item you want to test and follow the wizard to complete the test.



Send Log

If you can't find a solution to your problem after the system test, you can click **Send Log** on the left to send the test log to ASUS support team. Our technical personnel would help you with the problems.



Before you send the log, remember to set up your e-mail account in the Mozilla Thunderbird client first. Refer to page 4-23 for details.

Desktop Mode

The **Desktop Mode** allows you to select the display mode and adjust your Eee PC display resolution.

You can use both external and internal displays, external display only or internal display only. If an external display is not connected, the first two options will be grayed out. You can also manually adjust the display resolution or set it automatically adjust.




If you set your display resolution to other than 800x480, use the touchpad scrolling bar to scroll up and down the screen.



Connect an external monitor before booting up the Eee PC.



If you have installed Windows XP to your Eee PC, right-click the ASUS Eee PC Utility icon  on the OS taskbar to adjust the display resolution.

Voice Command

Operate your Eee PC hands-free. With voice command, you can launch Eee PC utilities without utilizing the keyboard. Just let your lips do the service.

Follow the instructions below to use voice command:

1. Double-click **VoiceCommand** from the **Settings** tab.
2. Right click the voice command icon on the OS taskbar and toggle **Enable** to activate this function.
3. The items on the list are available for voice command function. Add "computer" before each command.



An example of voice command use follows:



1. If you encounter new vocabulary, consult the dictionary in your Eee PC.
2. Activate the voice command function.
3. Speak out "computer-dictionary," and the built-in dictionary will be at your service.

Task Manager

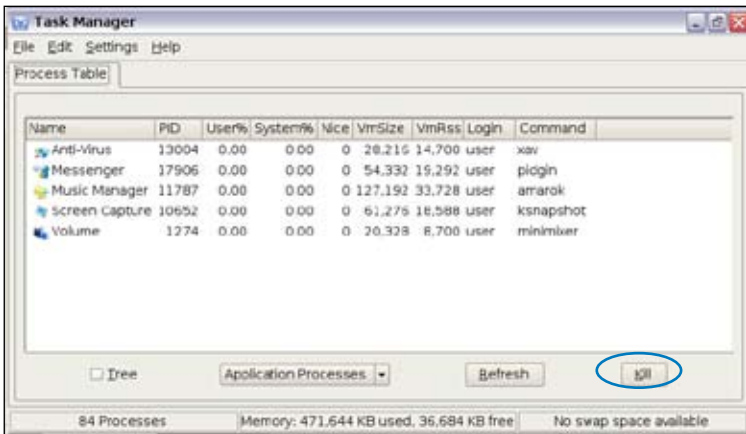
The Task Manager displays the application processes. Tweak your Eee PC up if it is running slow by killing the application with Task Manager.

Follow the instructions below to terminate applications:

1. Double click the SOS icon  on the OS taskbar to display the running applications.

Or, press  +  (<Fn> + <F6>) directly to launch Task Manager.

2. Select an unnecessary application that uses the system resources and click **Kill** to terminate the process.

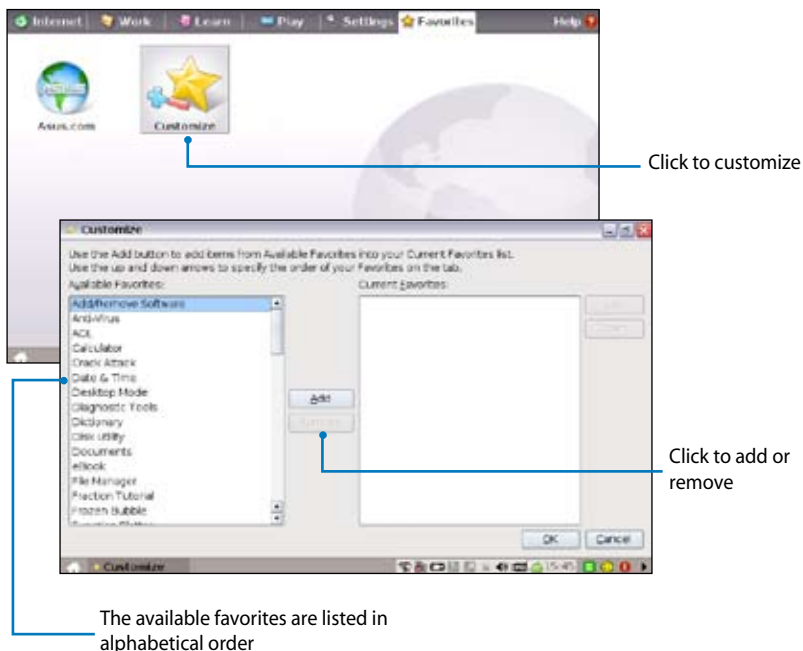


Using Task Manager to terminate applications may cause damage to the files that the application is reading or editing. We do not recommend you use Task Manager to stop the applications that are working on your important data. Or, back up your important data before using Task Manager.

Favorites

Customize your favorites on the Favorites tab. Click **Customize** and start to add or remove your favorites.

From the available favorites list in the left pane, select a desired item to include in your favorites, and click **Add**. To remove a favorite from your current favorites list, select an item from the right pane and click **Remove**.



The item order in the list corresponds to the display order on the Favorites tab.

Preparing to Install Windows® XP

Installing Windows® XP

Optimizing Windows® XP

Installing & Optimizing Windows® XP

A large, light gray, stylized number '5' is positioned behind the main title text, partially overlapping the words 'Optimizing' and 'XP'.

Preparing to install Windows® XP

Before installing Windows® XP operating system to your Eee PC, you need the following items.

- A USB 2.0 DVD-ROM
- The official Windows® XP Service Pack 2 disc from Microsoft®
- A USB flash disk (size larger than 1GB) or external hard disk drive
- ASUS Eee PC support DVD



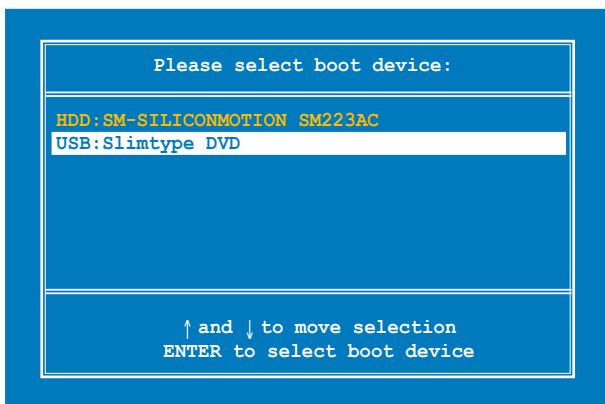
-
- The older version of Windows® OS does not support USB DVD-ROM. Ensure the disc you have is Windows® XP Service Pack 2.
 - Your Eee PC might not be able to detect all the USB flash disks. We recommend you use a USB flash disk smaller than 2 G.
-

Installing Windows® XP

Follow the instructions below to install Windows® XP service pack 2:

1. Connect the power cord to your Eee PC.
2. Insert the Windows XP Service Pack 2 disc to the USB DVD-ROM and connect the USB optical drive to your Eee PC.
3. Start the system and press **<F2>** on bootup to enter the BIOS setup. Go to **Advanced > Onboard Devices Configuration** and enable all the items.
4. Go to **Advanced** and set **OS Installation** to [Start].
5. Press **<F10>** to save the configuration and reboot the system.

6. Press <ESC> on bootup and the **Please select boot device** screen appears. Select USB:XXXXXX (may be labeled as the ODD brand name) to boot from the optical drive.



7. After the Windows® XP installation screen appears. Delete any existing partitions.



You will lose all your data after deleting all existing disk partitions. Ensure to back up your important data before installing Windows® XP to your Eee PC.

8. Press <Enter> and select **Format the partition using the NTFS file system** to start the Windows® XP OS setup.
9. Follow the on-screen instructions to complete the installation process.
10. After the Windows® XP OS installation is completed. Restart the system and press <F2> on bootup to enter the BIOS setup. Go to **Advanced** and set **OS Installation** back to [Finish].
11. Press <F10> to save the configuration and reboot the system.
12. After entering Windows, insert the Support DVD to the USB DVD/CD-ROM and click **InstAll - Drivers Installation Wizard** to install all drivers.

Optimizing Windows® XP

For the best performance of your Eee PC with Windows XP operating system, follow some quick steps below to make your Eee PC run faster.

Changing Virtual Memory

ASUS Eee PC support DVD will by default set the virtual memory to 200MB. Change the virtual memory based on your needs.

1. Go to **Control Panel > System**.
2. Click the **Advanced** tab on the top and click the **Settings** button in **Performance** area.



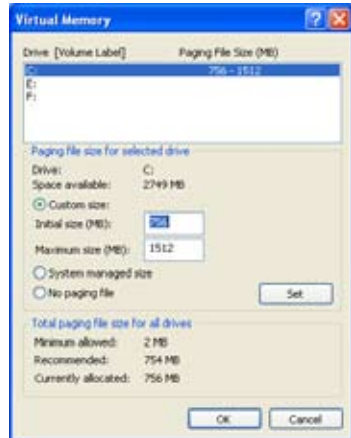
3. Click **Advanced** tab and the **Change** button to change the virtual memory.



4. Enter the **Initial size** and the **Maximum size** based on your needs.



If you are unsure about the size, set both Initial and Maximum size to 256 MB.



Turning off System Restore

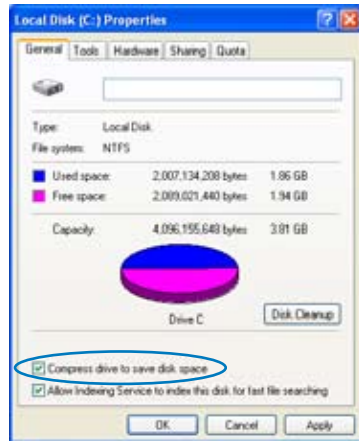
Though System Restore can track and reverse changes to your computer, it consumes system resources. Follow the instructions to turn off System Restore.

1. Go to **Control Panel > System**.
2. Click **System Restore** tab on the top.
3. Click the box before **Turn off System Restore**.



Compressing Disk Drive

1. Go to **Control Panel > My Computer**.
2. Right-click **Local Disk (C:)** and select **Properties**.
3. Check the box before **Compress drive to save disk space**.

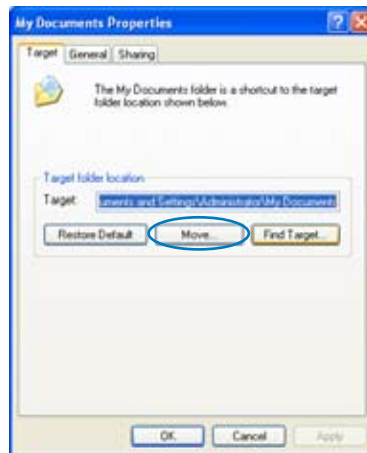


- If an error message appears during the disk drive compression, select **Skip All**.
- The disk drive capacity varies depending on model.

Relocating Files

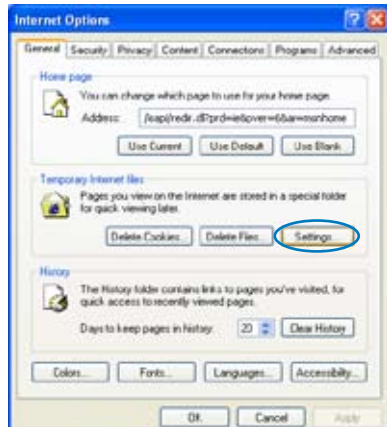
My Documents

1. Click **Start**, right-click **My Documents** and select **Properties**.
2. Click **Move** and select a destination in another partition.
3. Click **OK** to relocate **My Documents**.

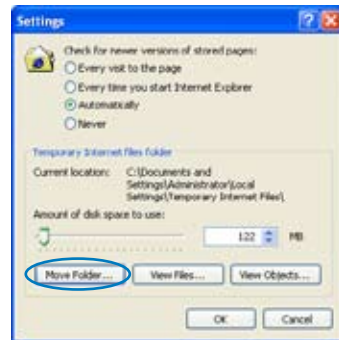


IE Temporary Internet Files

1. Launch Internet Explorer.
2. Click **Tools** on the top and select **Internet Options**.
3. Click **Settings** in **Temporary Internet files** area.



4. Click **Move Folders** and select a destination in another partition.
5. Click **OK** to relocate **Temporary Internet Files**.



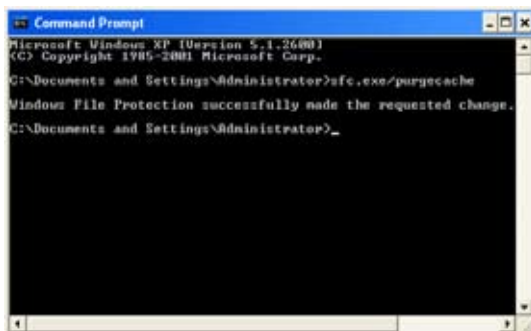
Deleting unnecessary Windows Components

1. Go to **Control Panel > Add or Remove Programs**.
2. Click **Add/Remove Windows Components** on the left to display the component wizard.
3. Uncheck the boxes for the Windows components you do not need.



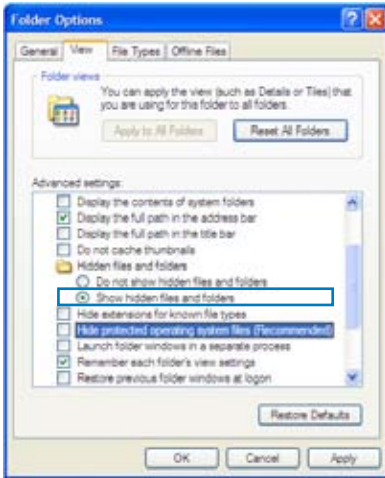
Clearing System Backup Data

1. Go to **All Programs > Accessories > Command Prompt**.
2. Key in **sfc.exe/purgecache**.
3. Press <Enter> to clear the system backup data.



Deleting unnecessary document files

1. Go to **Start > My Computer**.
2. Click **Tools** on the top and select **Folder Options**.
3. Click the **View** tab. Toggle the option **Show hidden files and folders**, and unselect **Hide protected operating system files (Recommended)**.



4. Connect a USB flash disk (size larger than 1GB) or a USB hard disk drive to your Eee PC for to back up the files you want to delete.
5. Refer to the table on the next page for the system files you can delete. Open **Local Disk (C:)** and type the directories in the address field to locate the files.



If your Eee PC malfunctions after the system file removal, use the backup disk you made in step 4 to restore the files.

Directory	File/Folder name	Description
Media sample files		
Windows\System32	Logon.scr and other *.scr files	Built-in screensaver
Windows\Web\Wallpaper	Ascent.jpg and other *.jpg files	Built-in wallpaper
Documents and Settings\All Users\Document	Shared Music, Shared Pictures, Shared Video	Built-in samples
System Tutoring and Help Files		
Windows\Help	All files	WinXP help files
Unused Driver Files		
Windows\System32\Dllcache	All files	Backup DLL files for recovery
Windows Service Pack 2 and Hot Fix Files		
Windows\	KB*.txt files	Uninstall information about SP2 or Hot Fix
Windows\	SET*.tmp	
Windows\	\\$hf_mig\$ \\$NtUninstallKB****\$	Uninstall files of SP2 and Hot Fix
Windows Multi-Language Input Method		
Windows\ime	<i>chsime, CHTIME, imejp, imejp98, imjp98_1, imkr6_1</i>	<i>Traditional/Simplified Chinese, Japanese and Korean input methods</i>



You can only delete *the files in italics* in Windows Safe Mode. Press <F8> on bootup and log on in Safe Mode.

Support DVD
System Recovery

**Support DVD &
System Recovery**

A large, light gray number '6' is positioned behind the main title text, partially overlapping it.

Support DVD information

The support DVD that comes with the Eee PC package contains the drivers, software applications, and utilities that you can install to avail all the features.



All the following screens appear only in the Windows® XP SP2 environment.

Running the support DVD

Insert the support DVD in the external optical drive. The DVD automatically displays the Drivers menu if Autorun is enabled in your computer.



Click an icon to display support DVD/ Eee PC information

Click an item to install



If Autorun is NOT enabled in your computer, browse the contents of the support DVD to locate the file ASSETUP.EXE from the BIN folder. Double-click the ASSETUP.EXE file to run the DVD.

Drivers menu

The Drivers menu shows available device drivers when the system detects installed devices. Install the necessary drivers to activate the devices.



InstAll - Drivers Installation Wizard

Installs all the drivers.

ASUS ACPI Driver and Utility

Installs ASUS ACPI driver before all the drivers if you are not using InstAll Wizard.

Intel(R) Chipset Inf Update Program

Installs Intel® Chipset Inf update program.

Realtek Audio Driver

Installs the Realtek® audio driver.

Intel Graphics Accelerator Driver

Installs Intel® Graphics Accelerator driver.

Synaptics TouchPad Driver

Installs Synaptics touchpad driver.

Utilities menu

The Utilities menu shows the applications that the Eee PC supports.



InetAll - Installation Wizard for Utilities

Installs all the utilities.

ADOBE Acrobat Reader V7.0

Installs the Adobe® Acrobat® Reader that allows you to open, view, and print documents in Portable Document Format (PDF).

Atheros Ethernet Utility

Installs Atheros Ethernet utility.

ASUS Update

The ASUS Update utility allows you to update the Eee PC BIOS in the Windows® environment. This utility requires an Internet connection either through a network or an Internet Service Provider (ISP).

ASUS Linux USB Flash Utility

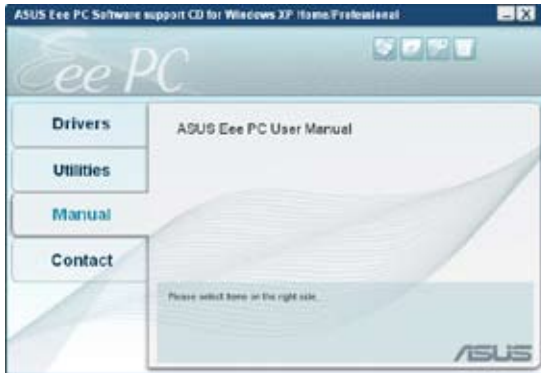
Makes a USB bootable disk with Linux system image for Eee PC system recovery.

Manual

The Manual menu contains a list of supplementary user manuals. Click an item to open the folder of the user manual.

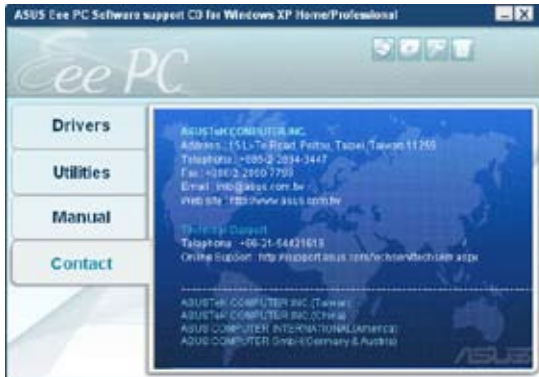


Most user manual files are in Portable Document Format (PDF). Install the Adobe® Acrobat® Reader from the Utilities menu before opening a user manual file.



Contact

Click the Contact tab to display the ASUS contact information. You can also find this information on the inside front cover of this user guide.



Other information

The icons on the top right corner of the screen provide additional information on the Eee PC and the contents of the support DVD. Click an icon to display the specified information.



System information



DVD content



Technical support



File list

System Recovery

There are three ways to perform the system recovery. Refer to the following sections for details.



The OS image file bundled in the support DVD may be not the latest version. After the system recovery, use the **Add/Remove Software** in the **Settings** tab to update your OS.



You will lose all your data during the system recovery. Ensure to back up your important data before recovering your system.

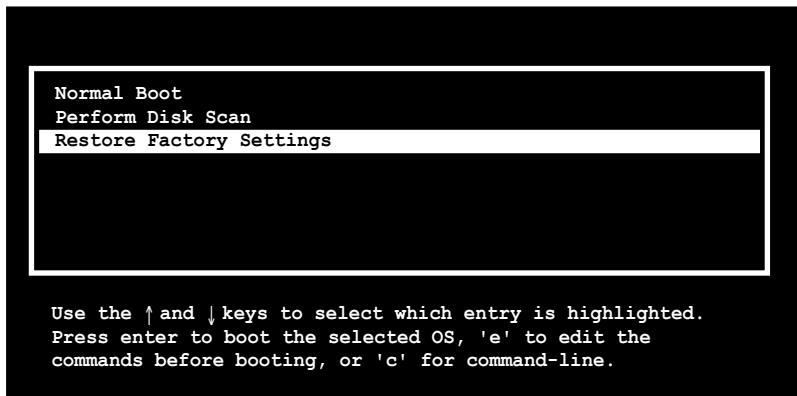
Using Hidden Partition

1. Hold **<F9>** during bootup (requires a Recovery Partition).



If you have installed Windows XP to your Eee PC, the built-in hidden partition would be cleared and cannot be used for system recovery.

2. Highlight **Restore Factory Settings** and press **<Enter>** to start the system recovery.



If the system recovery fails, there might be something wrong with your Eee PC SSD. Contact your local RMA for support.

Using the Support DVD

1. Connect an external DVD optical drive to your Eee PC and insert the Support DVD into the optical drive (System needs to be powered ON).
2. Restart the system and press <F2> on bootup to enter the BIOS setup. Go to **Boot > Boot Device Priority** and select the optical drive (may be labeled as "USB: DVD") as the 1st Boot Device.
3. Press <F10> to save the configuration and reboot from the Support DVD.
4. Key in **yes** and press <Enter> to continue the system recovery:
5. When the recovery is completed, press <Enter> to reboot the system.

Using USB Flash Disk

You need another PC and a USB flash disk (larger than 1GB) for Eee PC system recovery.



You will lose all your data on the USB flash disk. Back up important data before using the USB disk as a recovery disk.



Your Eee PC might not be able to detect all the USB flash disks. We recommend you use a USB flash disk smaller than 2 G.

To use your USB flash disk to perform system recovery:

1. Connect your USB flash disk (size larger than 1GB) to another PC/NB (bundled with Windows XP or later version) and insert the Support DVD to that PC/NB at the same time.

2. Click **Utilities** on the left and select **ASUS Linux USB Flash Utility**.



3. Select **Copy EEE PC image files to USB flash and make it bootable** and click **Run**.



Note that the disk for Eee PC recovery is correct if you have several USB flash disks connected to the PC.

4. Click **Yes** to continue. The system starts formatting your USB flash disk.



5. A dialog box appears. Follow the instructions to eject the USB disk and replug it to your PC/NB. Click **Retry** to continue.



6. Click **OK** to complete the process.



7. Connect the USB flash disk to your Eee PC.
8. Start the system and press <F2> on bootup to enter the BIOS setup. Go to **Boot > Hard Disk Drives** and select the USB drive (may be labeled as "USB:XXXX") as the 1st Drive.
9. Go to **Boot > Boot Device Priority** and select the USB drive (may be labeled as "USB:XXXX") as the 1st Boot Device.
- 10 Press <F10> to save the configuration and reboot from the USB flash disk.
11. Key in **yes** and press <Enter> to continue the system recovery.
- 12 When the recovery is completed, remove the USB flash disk and press <Enter> to reboot the system.

Reformatting the USB flash disk

To use the USB disk on your Windows operating system normally, follow the instructions below to reformat your USB disk.

1. Connect your USB flash disk to another PC/NB and insert the Support DVD to that PC/NB at the same time.
2. Click **Utilities** on the left and select **ASUS Linux USB Flash Utility**.
3. Select **Format the USB flash disk back to Windows format (FAT16)** and click **Run**.
4. Click **OK** to complete the disk formatting.



Trademark Statements

Qualified Vendor List

Declarations and Safety Statements

GNU General Public License

Copyright Information

Limitation of Liability

Service and Support

Appendix

A large, light gray, stylized letter 'A' graphic that serves as a background for the word 'Appendix'.

Trademark Statements

Google Talk service and its logos are trademarks of Google Inc..

GroupWise service and its logos are trademarks of Novell Inc..

MSN service and its logos are trademarks of Microsoft Corporation.

QQ service and its logos are trademarks of Tencent Inc..

Yahoo! service and its logos are trademarks of Yahoo! Inc..

All other services and logos are either trademarks or registered trademarks of their respective owners.

Qualified Vendor List

Device	Model
Display Device	AOC 716SW
	AOC L154W
	ASUS PW191
	ASUS MB19
	ASUS PW201
	BenQ FP94VW
	BenQ FP222WH
	Samsung 203B
	Samsung 226BW
	Samsung SyncMaster 740BF
	Sony KLV46X200A
	ViewSonic VA1912wb
	ViewSonic VE710b
	ViewSonic VG712S
Floppy	Mitsumi D353FUE
	IBM CN533
Flash Memory Card Reader/Writer	ASIA All in 1 Card Reader
	GL816 6in1 Card Reader
	Kawau Card Reader
	SSK All in 1 Card Reader
Flash Memory Card	Transcend TS2GSDC 4.0G
	Transcend TS4GSD150
	Transcend TS512MUSD
	Adata TurboSD2.0 4.0G
	KingSton SD 1.0G
	KingSton SD 2.0G
	KingSton SD 4.0G
	Toshiba SD 256MB
	Panasonic SD 16MB
	SanDisk SD 4.0G
	SanDisk SD 1.0G
	SanDisk ULTRAI 1GB
	Canon SD 16MB
	Pretec MMC 32MB
	Adata MMC 512MB
	Transcend TS1GRMMC4
	Transcend TS512MMCM
	Transcend TS4GMMC4
	ADATA SDHC 2.0 8GB
	Transcend TS4GSDHC6
	Transcend TS8GSDHC6
Toshiba M04GR4W 4G	

Fast Ethernet Unmanaged Switch/Hub Adapter	ALPHA-AFH-805T
	ALPHA-AFH-808T
	TP-LINK TL-HP5MU
	ASUS GIGAX1105N
	ASUS GIGAX1108N
	D-Link DES-1008D
	LINKSYS SD208
	NETGEAR FS608
	D-Link Di-704P
	D-Link Di-604+
Wireless Lan Access Point	D-Link DI 624
	Buffalo WZR-G300N
	D-Link DIR-635
	ASUS WL500G
	ASUS WL520G
	ASUS WL566GM
	ASUS WL 530G
	Netcore 615GR
	Linksys WRT300N
	HUB
	FEATARES-USB2.0 HUB
Printer	EPSON STYLUS-C43UX
	HP-7960
	EPSON-STYLUS PHOTO R800
	HP-PHOTOSMART-D5168
	HP Photosmart D5160
	HP Desk Jet 5652
	Samsung ML2010
USB Flash disk	UNIS USB2.0 1G
	Adata 1.0G
	Adata 4.0G
	PQI 4.0G
	Adata 8.0G
	SanDisk 2.0G
	KingSton 2.0G
	ASUS Ai-flash 5
	Lenovo USB Flash
	Mouse
MSI MSM-206AC	
Microsoft D58	
Microsoft Basic Optical Mouse	
Logitech M-BE58	
Razer Copperhead Laser Mouse	

External USB DVD drive	Sony DRX-820UL
	Taidian DWB8PUM
	Sony DRX-S50U
	Xbox HD DVD
	Pioneer DVR-112CH
	BenQ TW200D
	BenQ EW164B-0K2
	ASUS SDRW-0804P-D
Projector	Dell 3400MP
	Toshiba S8
Monitor and TV	Acer AL1916W
	AOC 210V
	ASUS PW191
	ASUS MM19T
	ASUS PW201
	ASUS MW221U
	BenQ DV2680
	BenQ FP22W
	CHIMEI CMV937A
	Dell FP2407FWP
	Hannsg GF191
	Mozo M7++
	Philips 170B5
	Philips 190B6
	Philips 32PF7320
	PSA PD711A
	Samsung 225MS
	Samsung 940B
	Sony KDL-26S2020
	ViewSonic G90f+
	ViewSonic P70F
	ViewSonic PF775
	ViewSonic PF790
ViewSonic N3206W	



The Linux-based Eee PC may not support all PC peripherals. Visit our ASUS website for the latest qualified vendor list before you purchase peripherals for your Eee PC.

Declarations and Safety Statements

Internal Modem Compliancy

The Eee PC with internal modem model complies with JATE (Japan), FCC (US, Canada, Korea, Taiwan), and CTR21. The internal modem has been approved in accordance with Council Decision 98/482/EC for pan-European single terminal connection to the public switched telephone network (PSTN). However due to differences between the individual PSTNs provided in different countries, the approval does not, of itself, give an unconditional assurance of successful operation on every PSTN network termination point. In the event of problems you should contact your equipment supplier in the first instance.

Overview

On 4th August 1998 the European Council Decision regarding the CTR 21 has been published in the Official Journal of the EC. The CTR 21 applies to all non voice terminal equipment with DTMF-dialling which is intended to be connected to the analogue PSTN (Public Switched Telephone Network).

CTR 21 (Common Technical Regulation) for the attachment requirements for connection to the analogue public switched telephone networks of terminal equipment (excluding terminal equipment supporting the voice telephony justified case service) in which network addressing, if provided, is by means of dual tone multifrequency signalling.

Network Compatibility Declaration

Statement to be made by the manufacturer to the Notified Body and the vendor: "This declaration will indicate the networks with which the equipment is designed to work and any notified networks with which the equipment may have inter-working difficulties"

Network Compatibility Declaration

Statement to be made by the manufacturer to the user:“This declaration will indicate the networks with which the equipment is designed to work and any notified networks with which the equipment may have inter-working difficulties. The manufacturer shall also associate a statement to make it clear where network compatibility is dependent on physical and software switch settings. It will also advise the user to contact the vendor if it is desired to use the equipment on another network.”

Up to now the Notified Body of CETECOM issued several pan-European approvals using CTR 21. The results are Europe’s first modems which do not require regulatory approvals in each individual European country.

Non-Voice Equipment

Answering machines and loud-speaking telephones can be eligible as well as modems, fax machines, auto-dialers and alarm systems. Equipment in which the end-to-end quality of speech is controlled by regulations (e.g. handset telephones and in some countries also cordless telephones) is excluded.

Internal Modem Compliancy (Cont.)

This table shows the countries currently under the CTR21 standard.

<u>Country</u>	<u>Applied</u>	<u>More Testing</u>
Austria ¹	Yes	No
Belgium	Yes	No
Czech Republic	No	Not Applicable
Denmark ¹	Yes	Yes
Finland	Yes	No
France	Yes	No
Germany	Yes	No
Greece	Yes	No
Hungary	No	Not Applicable
Iceland	Yes	No
Ireland	Yes	No
Italy	Still Pending	Still Pending
Israel	No	No
Lichtenstein	Yes	No
Luxemburg	Yes	No
The Netherlands ¹	Yes	Yes
Norway	Yes	No
Poland	No	Not Applicable
Portugal	No	Not Applicable
Spain	No	Not Applicable
Sweden	Yes	No
Switzerland	Yes	No
United Kingdom	Yes	No

This information was copied from CETECOM and is supplied without liability. For updates to this table, you may visit http://www.cetecom.de/technologies/ctr_21.html

¹ National requirements will apply only if the equipment may use pulse dialling (manufacturers may state in the user guide that the equipment is only intended to support DTMF signalling, which would make any additional testing superfluous).

In The Netherlands additional testing is required for series connection and caller ID facilities.

Federal Communications Commission Statement

This device complies with FCC Rules Part 15. Operation is subject to the following two conditions:

- This device may not cause harmful interference, and
- This device must accept any interference received, including interference that may cause undesired operation.

This equipment has been tested and found to comply with the limits for a class B digital device, pursuant to Part 15 of the Federal Communications Commission (FCC) rules. These limits are designed to provide reasonable protection against harmful interference in a residential installation. This equipment generates, uses, and can radiate radio frequency energy and, if not installed and used in accordance with the instructions, may cause harmful interference to radio communications. However, there is no guarantee that interference will not occur in a particular installation. If this equipment does cause harmful interference to radio or television reception, which can be determined by turning the equipment off and on, the user is encouraged to try to correct the interference by one or more of the following measures:

- Reorient or relocate the receiving antenna.
- Increase the separation between the equipment and receiver.
- Connect the equipment into an outlet on a circuit different from that to which the receiver is connected.
- Consult the dealer or an experienced radio/TV technician for help.



The use of a shielded-type power cord is required in order to meet FCC emission limits and to prevent interference to the nearby radio and television reception. It is essential that only the supplied power cord be used. Use only shielded cables to connect I/O devices to this equipment. You are cautioned that changes or modifications not expressly approved by the party responsible for compliance could void your authority to operate the equipment.

(Reprinted from the Code of Federal Regulations #47, part 15.193, 1993. Washington DC: Office of the Federal Register, National Archives and Records Administration, U.S. Government Printing Office.)

FCC Radio Frequency Interference Requirements

This device is restricted to INDOOR USE due to its operation in the 5.15 to 5.25GHz frequency range. FCC requires this product to be used indoors for the frequency range 5.15 to 5.25GHz to reduce the potential for harmful interference to co-channel of the Mobile Satellite Systems.

High power radars are allocated as primary user of the 5.25 to 5.35GHz and 5.65 to 5.85GHz bands. These radar stations can cause interference with and / or damage this device.



This device and its antenna(s) must not be co-located or operating in conjunction with any other antenna or transmitter.

FCC Radio Frequency (RF) Exposure Caution Statement



Any changes or modifications not expressly approved by the party responsible for compliance could void the user's authority to operate this equipment. "The manufacture declares that this device is limited to Channels 1 through 11 in the 2.4GHz frequency by specified firmware controlled in the USA."

This equipment complies with FCC radiation exposure limits set forth for an uncontrolled environment. To maintain compliance with FCC RF exposure compliance requirements, please avoid direct contact to the transmitting antenna during transmitting. End users must follow the specific operating instructions for satisfying RF exposure compliance.

For operation within 5.15GHz and 5.25GHz frequency ranges, it is restricted to indoor environment, and the antenna of this device must be integral.

Declaration of Conformity (R&TTE directive 1999/5/EC)

The following items were completed and are considered relevant and sufficient:

- Essential requirements as in [Article 3]
- Protection requirements for health and safety as in [Article 3.1a]
- Testing for electric safety according to [EN 60950]
- Protection requirements for electromagnetic compatibility in [Article 3.1b]
- Testing for electromagnetic compatibility in [EN 301 489-1] & [EN 301 301]
- Testing according to [489-17]
- Effective use of the radio spectrum as in [Article 3.2]
- Radio test suites according to [EN 300 328-2]

CE Mark Warning

This is a Class B product, in a domestic environment, this product may cause radio interference, in which case the user may be required to take adequate measures.

IC Radiation Exposure Statement for Canada

This equipment complies with IC radiation exposure limits set forth for an uncontrolled environment. To maintain compliance with IC RF exposure compliance requirements, please avoid direct contact to the transmitting antenna during transmitting. End users must follow the specific operating instructions for satisfying RF exposure compliance.

Operation is subject to the following two conditions:

- This device may not cause interference and
- This device must accept any interference, including interference that may cause undesired operation of the device.

To prevent radio interference to the licensed service (i.e. co-channel Mobile Satellite systems) this device is intended to be operated indoors and away from windows to provide maximum shielding. Equipment (or its transmit antenna) that is installed outdoors is subject to licensing.

Because high power radars are allocated as primary users (meaning they have priority) in 5250-5350 MHz, these radars could cause interference and/or damage to license exempt LAN devices.

Wireless Operation Channel for Different Domains

N. America	2.412-2.462 GHz	Ch01 through CH11
Japan	2.412-2.484 GHz	Ch01 through Ch14
Europe ETSI	2.412-2.472 GHz	Ch01 through Ch13

France Restricted Wireless Frequency Bands

Some areas of France have a restricted frequency band. The worst case maximum authorized power indoors are:

- 10mW for the entire 2.4 GHz band (2400 MHz–2483.5 MHz)
- 100mW for frequencies between 2446.5 MHz and 2483.5 MHz



Channels 10 through 13 inclusive operate in the band 2446.6 MHz to 2483.5 MHz.

There are few possibilities for outdoor use: On private property or on the private property of public persons, use is subject to a preliminary authorization procedure by the Ministry of Defense, with maximum authorized power of 100mW in the 2446.5–2483.5 MHz band. Use outdoors on public property is not permitted.

In the departments listed below, for the entire 2.4 GHz band:

- Maximum authorized power indoors is 100mW
- Maximum authorized power outdoors is 10mW

Departments in which the use of the 2400–2483.5 MHz band is permitted with an EIRP of less than 100mW indoors and less than 10mW outdoors:

01 Ain Orientales	02 Aisne	03 Allier
05 Hautes Alpes	08 Ardennes	09 Ariège
11 Aude	12 Aveyron	16 Charente
24 Dordogne	25 Doubs	26 Drôme
32 Gers	36 Indre	37 Indre et Loire
41 Loir et Cher	45 Loiret	50 Manche
55 Meuse	58 Nièvre	59 Nord

60 Oise 61 Orne 63 Puy du Dôme
64 Pyrénées Atlantique 66 Pyrénées 67 Bas Rhin
68 Haut Rhin 70 Haute Saône
71 Saône et Loire 75 Paris
82 Tarn et Garonne 84 Vaucluse 88 Vosges
89 Yonne 90 Territoire de Belfort
94 Val de Marne

This requirement is likely to change over time, allowing you to use your wireless LAN card in more areas within France. Please check with ART for the latest information (www.art-telecom.fr)



Your WLAN Card transmits less than 100mW, but more than 10mW.

UL Safety Notices

Required for UL 1459 covering telecommunications (telephone) equipment intended to be electrically connected to a telecommunication network that has an operating voltage to ground that does not exceed 200V peak, 300V peak-to-peak, and 105V rms, and installed or used in accordance with the National Electrical Code (NFPA 70).

When using the Eee PC modem, basic safety precautions should always be followed to reduce the risk of fire, electric shock, and injury to persons, including the following:

- DO NOT use the Eee PC near water, for example, near a bath tub, wash bowl, kitchen sink or laundry tub, in a wet basement or near a swimming pool.
- DO NOT use the Eee PC during an electrical storm. There may be a remote risk of electric shock from lightning.
- DO NOT use the Eee PC in the vicinity of a gas leak.

Required for UL 1642 covering primary (nonrechargeable) and secondary (rechargeable) lithium batteries for use as power sources in products. These batteries contain metallic lithium, or a lithium alloy, or a lithium ion, and may consist of a single electrochemical cell or two or more cells connected in series, parallel, or both, that convert chemical energy into electrical energy by an irreversible or reversible chemical reaction.

- Do not dispose the Eee PC battery pack in a fire, as they may explode. Check with local codes for possible special disposal instructions to reduce the risk of injury to persons due to fire or explosion.
- Do not use power adapters or batteries from other devices to reduce the risk of injury to persons due to fire or explosion. Use only UL certified power adapters or batteries supplied by the manufacturer or authorized retailers.

Power Safety Requirement

Products with electrical current ratings up to 6A and weighing more than 3Kg must use approved power cords greater than or equal to: H05VV-F, 3G, 0.75mm² or H05VV-F, 2G, 0.75mm².



This symbol of the crossed out wheeled bin indicates that the product (electrical, electronic equipment, and mercury-containing button cell battery) should not be placed in municipal waste. Check local regulations for disposal of electronic products.

Nordic Lithium Cautions (for lithium-ion batteries)

CAUTION! Danger of explosion if battery is incorrectly replaced. Replace only with the same or equivalent type recommended by the manufacturer. Dispose of used batteries according to the manufacturer's instructions. (English)

ATTENZIONE! Rischio di esplosione della batteria se sostituita in modo errato. Sostituire la batteria con un una di tipo uguale o equivalente consigliata dalla fabbrica. Non disperdere le batterie nell'ambiente. (Italian)

VORSICHT! Explosionsgefahr bei unsachgemäßen Austausch der Batterie. Ersatz nur durch denselben oder einem vom Hersteller empfohlenem ähnlichen Typ. Entsorgung gebrauchter Batterien nach Angaben des Herstellers. (German)

ADVARSEL! Lithiumbatteri - Eksplosionsfare ved fejlagtig håndtering. Udskiftning må kun ske med batteri af samme fabrikat og type. Levér det brugte batteri tilbage til leverandøren. (Danish)

VARNING! Explosionsfara vid felaktigt batteribyte. Använd samma batterityp eller en ekvivalent typ som rekommenderas av apparattillverkaren. Kassera använt batteri enligt fabrikantens instruktion. (Swedish)

VAROITUS! Paristo voi räjähtää, jos se on virheellisesti asennettu. Vaihda paristo ainoastaan laitevalmistajan suositteluun tyypin. Hävitä käytetty paristo valmistajan ohjeiden mukaisesti. (Finnish)

ATTENTION! Il y a danger d'explosion s'il y a remplacement incorrect de la batterie. Remplacer uniquement avec une batterie du même type ou d'un type équivalent recommandé par le constructeur. Mettre au rebut les batteries usagées conformément aux instructions du fabricant. (French)

ADVARSEL! Eksplosjonsfare ved feilaktig skifte av batteri. Benytt samme batteritype eller en tilsvarende type anbefalt av apparatfabrikanten. Brukte batterier kasseres i henhold til fabrikantens instruksjoner. (Norwegian)

標準品以外の使用は、危険の元になります。交換品を使用する場合、製造者に指定されるものを使って下さい。製造者の指示に従って処理して下さい。(Japanese)

CTR 21 Approval (for Eee PC with built-in Modem)

Danish

«Udstyret er i henhold til Rådets beslutning 98/482/EF EU-godkendt til at blive opkoblet på de offentlige telefonnet som enkeltforbundet terminal. På grund af forskelle mellem de offentlige telefonnet i de forskellige lande giver godkendelsen dog ikke i sig selv ubetinget garanti for, at udstyret kan fungere korrekt på samtlige nettermineringspunkter på de offentlige telefonnet.

I tilfælde af problemer bør De i første omgang henvende Dem til leverandøren af udstyret.»

Dutch

„Dit apparaat is goedgekeurd volgens Beschikking 98/482/EG van de Raad voor de pan-Europese aansluiting van enkelvoudige eindapparatuur op het openbare geschakelde telefoonnetwerk (PSTN). Gezien de verschillen tussen de individuele PSTN's in de verschillende landen, biedt deze goedkeuring op zichzelf geen onvoorwaardelijke garantie voor een succesvolle werking op elk PSTN-netwerk aansluitpunt.

Neem bij problemen in eerste instantie contact op met de leverancier van het apparaat.»

English

“The equipment has been approved in accordance with Council Decision 98/482/EC for pan-European single terminal connection to the public switched telephone network (PSTN). However, due to differences between the individual PSTNs provided in different countries, the approval does not of itself, give an unconditional assurance of successful operation on every PSTN network termination point.

In the event of problems, you should contact your equipment supplier in the first instance.”

Finnish

“Tämä laite on hyväksytty neuvoston päätöksen 98/482/EY mukaisesti liitettäväksi yksittäisen laitteena yleiseen kytkentäiseen puhelinverkkoon (PSTN) EU:n jäsenvaltioissa. Eri maiden yleisten kytkentäisten puhelinverkojen välillä on kuitenkin eroja, joten hyväksyntä ei sellaisenaan takaa häiriötöntä toimintaa kaikkien maiden yleisten kytkentäisten puhelinverkojen liitynpisteissä.

Ongelmien ilmetessä ottakaa viipymättä yhteyttä laitteen toimittajaan.”

French

«Cet équipement a reçu l'agrément, conformément à la décision 98/482/CE du Conseil, concernant la connexion paneuropéenne de terminal unique aux réseaux téléphoniques publics communifiés (RTPC). Toutefois, comme il existe des différences d'un pays à l'autre entre les RTPC, l'agrément en soi ne constitue pas une garantie absolue de fonctionnement optimal à chaque point de terminaison du réseau RTPC.

En cas de problème, vous devez contacter en premier lieu votre fournisseur.»

German

„Dieses Gerät wurde gemäß der Entscheidung 98/482/EG des Rates europaweit zur Anschaltung als einzelne Einleinrichtung an das öffentliche Fernsprechnetz zugelassen. Aufgrund der zwischen den öffentlichen Fernsprechnetzen verschiedener Staaten bestehenden Unterschiede stellt diese Zulassung an sich jedoch keine unbedingte Gewähr für einen erfolgreichen Betrieb des Geräts an jedem Netzanschlußpunkt dar.

Falls beim Betrieb Probleme auftreten, sollten Sie sich zunächst an Ihren Fachhändler wenden.“

Greek

«Ο εξοπλισμός έχει εγκριθεί για πανευρωπαϊκή σύνδεση μονοαποσπασμένου τερματικού με το δημόσιο τηλεφωνικό δίκτυο μεταγωγής (PSTN), σύμφωνα με την απόφαση 98/482/ΕΚ του Συμβουλίου. Ωστόσο, επειδή υπάρχουν διαφορές μεταξύ των επιμέρους PSTN που παρέχονται σε διάφορες χώρες, η έγκριση δεν παρέχει από μόνη της απεριόριστη εξασφάλιση επαρκούς λειτουργίας σε κάθε σημείο αλληλοδής του δικτύου PSTN.

Εάν ανακύψουν προβλήματα, θα πρέπει κυρίως να απευθύνεστε στον προμηθευτή του εξοπλισμού σας.»

Italian

«La presente apparecchiatura terminale è stata approvata in conformità della decisione 98/482/CE del Consiglio per la connessione paneuropea come terminale singolo ad una rete analogica PSTN. A causa delle differenze tra le reti dei differenti paesi, l'approvazione non garantisce però di per sé il funzionamento corretto in tutti i punti di terminazione di rete PSTN.

In caso di problemi contattare in primo luogo il fornitore del prodotto.»

Portuguese

«Este equipamento foi aprovado para ligação pan-europeia de um único terminal à rede telefónica pública comutada (RTPC) nos termos da Decisão 98/482/CE. No entanto, devido às diferenças existentes entre as RTPC dos diversos países, a aprovação não garante incondicionalmente, por si só, um funcionamento correcto em todos os pontos terminais da rede da RTPC.

Em caso de problemas, deve entrar-se em contacto, em primeiro lugar, com o fornecedor do equipamento.»

Spanish

«Este equipo ha sido homologado de conformidad con la Decisión 98/482/CE del Consejo para la conexión paneuropea de un terminal simple a la red telefónica pública conmutada (RTPC). No obstante, a la vista de las diferencias que existen entre las RTPC que se ofrecen en diferentes países, la homologación no constituye por sí sola una garantía incondicional de funcionamiento satisfactorio en todos los puntos de terminación de la red de una RTPC.

En caso de surgir algún problema, procede ponerse en contacto en primer lugar con el proveedor del equipo.»

Swedish

”Utrustningen har godkänts i enlighet med rådets beslut 98/482/EG för all europeisk anslutning som enskild terminal till det allmänt tillgängliga kopplade telenätet (PSTN). På grund av de skillnader som finns mellan telenätet i olika länder utgör godkännandet emellertid inte i sig självt en absolut garanti för att utrustningen kommer att fungera tillfredsställande vid varje telenätanslutningspunkt.

Om problem uppstår bör ni i första hand kontakta leverantören av utrustningen.”

GNU General Public License

Licensing Information

This product includes copyrighted third-party software licensed under the terms of the GNU General Public License. See The GNU General Public License for the exact terms and conditions of this license.

Specially, the following parts of this product are subject to the GNU GPL:

- The Linux operating system kernel
- Firefox
- Kworldclock
- Pidgin
- KCal
- Kontact
- KSnapshot
- Thunderbird
- Knotes
- Kalzium
- Kstars
- Tux Typing
- KMessedWords
- KHangMan
- Kbruch
- Tux, of Math Command
- Kig
- KmPlot
- mtPaint
- Tux Paint
- KPatience
- Frozen Bubble
- Crack Attack
- GNOME Sudoku
- KTuberling
- LTris
- The KControl Xprinters Module
- The KControl Clock Module
- GSynaptics

All listed software packages are copyright by their respective authors. Refer to the source code for detailed information.

ASUSTeK COMPUTER Inc. has exposed the full source code of the GPL licensed software, including any scripts to control compilation and installation of the object code. All future firmware updates will also be accompanied with their respective source code. For more information on how you can obtain our open source code, visit our website (<http://support.asus.com.tw/download/>).

GNU GENERAL PUBLIC LICENSE

Version 2, June 1991

Copyright (C) 1989, 1991 Free Software Foundation, Inc.,
51 Franklin Street, Fifth Floor, Boston, MA 02110-1301 USA

Everyone is permitted to copy and distribute verbatim copies
of this license document, but changing it is not allowed.

Preamble

The licenses for most software are designed to take away your freedom to share and change it. By contrast, the GNU General Public License is intended to guarantee your freedom to share and change free software--to make sure the software is free for all its users.

This General Public License applies to most of the Free Software Foundation's software and to any other program whose authors commit to using it. (Some other Free Software Foundation software is covered by the GNU Lesser General Public License instead.) You can apply it to your programs, too.

When we speak of free software, we are referring to freedom, not price. Our General Public Licenses are designed to make sure that you have the freedom to distribute copies of free software (and charge for this service if you wish), that you receive source code or can get it if you want it, that you can change the software or use pieces of it in new free programs; and that you know you can do these things.

To protect your rights, we need to make restrictions that forbid anyone to deny you these rights or to ask you to surrender the rights. These restrictions translate to certain responsibilities for you if you distribute copies of the software, or if you modify it.

For example, if you distribute copies of such a program, whether gratis or for a fee, you must give the recipients all the rights that you have. You must make sure that they, too, receive or can get the source code. And you must show them these terms so they know their rights.

We protect your rights with two steps: (1) copyright the software, and (2) offer you this license which gives you legal permission to copy, distribute and/or modify the software.

Also, for each author's protection and ours, we want to make certain that everyone understands that there is no warranty for this free software. If the software is modified by someone else and passed on, we want its recipients to know that what they have is not the original, so that any problems introduced by others will not reflect on the original authors' reputations.

Finally, any free program is threatened constantly by software patents. We wish to avoid the danger that redistributors of a free program will individually obtain patent licenses, in effect making the program proprietary. To prevent this, we have made it clear that any patent must be licensed for everyone's free use or not licensed at all.

The precise terms and conditions for copying, distribution and modification follow.

TERMS AND CONDITIONS FOR COPYING, DISTRIBUTION AND MODIFICATION

0. This License applies to any program or other work which contains a notice placed by the copyright holder saying it may be distributed under the terms of this General Public License. The "Program", below, refers to any such program or work, and a "work based on the Program" means either the Program or any derivative work under copyright law: that is to say, a work containing the Program or a portion of it, either verbatim or with modifications and/or translated into another language. (Hereinafter, translation is included without limitation in the term "modification".) Each licensee is addressed as "you".

Activities other than copying, distribution and modification are not covered by this License; they are outside its scope. The act of running the Program is not restricted, and the output from the Program is covered only if its contents constitute a work based on the Program (independent of having been made by running the Program). Whether that is true depends on what the Program does.

1. You may copy and distribute verbatim copies of the Program's source code as you receive it, in any medium, provided that you conspicuously and appropriately publish on each copy an appropriate copyright notice and disclaimer of warranty; keep intact all the notices that refer to this License and to the absence of any warranty; and give any other recipients of the Program a copy of this License along with the Program.

You may charge a fee for the physical act of transferring a copy, and you may at your option offer warranty protection in exchange for a fee.

2. You may modify your copy or copies of the Program or any portion of it, thus forming a work based on the Program, and copy and distribute such modifications or work under the terms of Section 1 above, provided that you also meet all of these conditions:

- a) You must cause the modified files to carry prominent notices stating that you changed the files and the date of any change.
- b) You must cause any work that you distribute or publish, that in whole or in part contains or is derived from the Program or any part thereof, to be licensed as a whole at no charge to all third parties under the terms of this License.
- c) If the modified program normally reads commands interactively when run, you must cause it, when started running for such interactive use in the most ordinary way, to print or display an announcement including an appropriate copyright notice and a notice that there is no warranty (or else, saying that you provide a warranty) and that users may redistribute the program under these conditions, and telling the user how to view a copy of this License. (Exception: if the Program itself is interactive but does not normally print such an announcement, your work based on the Program is not required to print an announcement.)

These requirements apply to the modified work as a whole. If identifiable sections of that work are not derived from the Program, and can be reasonably considered independent and separate works in themselves, then this License, and its terms, do not apply to those sections when you distribute them as separate works. But when you distribute the same sections as part of a whole which is a work based on the Program, the distribution of the whole must be on the terms of this License, whose permissions for other licensees extend to the entire whole, and thus to each and every part regardless of who wrote it.

Thus, it is not the intent of this section to claim rights or contest your rights to work written entirely by you; rather, the intent is to exercise the right to control the distribution of derivative or collective works based on the Program.

In addition, mere aggregation of another work not based on the Program with the Program (or with a work based on the Program) on a volume of a storage or distribution medium does not bring the other work under the scope of this License.

3. You may copy and distribute the Program (or a work based on it, under Section 2) in object code or executable form under the terms of Sections 1 and 2 above provided that you also do one of the following:

- a) Accompany it with the complete corresponding machine-readable source code, which must be distributed under the terms of Sections 1 and 2 above on a medium customarily used for software interchange; or,
- b) Accompany it with a written offer, valid for at least three years, to give any third party, for a charge no more than your cost of physically performing source distribution, a complete machine-readable copy of the corresponding source code, to be distributed under the terms of Sections 1 and 2 above on a medium customarily used for software interchange; or,

c) Accompany it with the information you received as to the offer to distribute corresponding source code. (This alternative is allowed only for noncommercial distribution and only if you received the program in object code or executable form with such an offer, in accord with Subsection b above.)

The source code for a work means the preferred form of the work for making modifications to it. For an executable work, complete source code means all the source code for all modules it contains, plus any associated interface definition files, plus the scripts used to control compilation and installation of the executable. However, as a special exception, the source code distributed need not include anything that is normally distributed (in either source or binary form) with the major components (compiler, kernel, and so on) of the operating system on which the executable runs, unless that component itself accompanies the executable.

If distribution of executable or object code is made by offering access to copy from a designated place, then offering equivalent access to copy the source code from the same place counts as distribution of the source code, even though third parties are not compelled to copy the source along with the object code.

4. You may not copy, modify, sublicense, or distribute the Program except as expressly provided under this License. Any attempt otherwise to copy, modify, sublicense or distribute the Program is void, and will automatically terminate your rights under this License. However, parties who have received copies, or rights, from you under this License will not have their licenses terminated so long as such parties remain in full compliance.

5. You are not required to accept this License, since you have not signed it. However, nothing else grants you permission to modify or distribute the Program or its derivative works. These actions are prohibited by law if you do not accept this License. Therefore, by modifying or distributing the Program (or any work based on the Program), you indicate your acceptance of this License to do so, and all its terms and conditions for copying, distributing or modifying the Program or works based on it.

6. Each time you redistribute the Program (or any work based on the Program), the recipient automatically receives a license from the original licensor to copy, distribute or modify the Program subject to these terms and conditions. You may not impose any further restrictions on the recipients' exercise of the rights granted herein. You are not responsible for enforcing compliance by third parties to this License.

7. If, as a consequence of a court judgment or allegation of patent infringement or for any other reason (not limited to patent issues), conditions are imposed on you (whether by court order, agreement or otherwise) that contradict the conditions of this License, they do not excuse you from the conditions of this License. If you cannot distribute so as to satisfy simultaneously your obligations under this License and any other pertinent obligations, then as a consequence you may not distribute the Program at all. For example, if a patent license would not permit royalty-free redistribution of the Program by all those who receive copies directly or indirectly through you, then the only way you could satisfy both it and this License would be to refrain entirely from distribution of the Program.

If any portion of this section is held invalid or unenforceable under any particular circumstance, the balance of the section is intended to apply and the section as a whole is intended to apply in other circumstances.

It is not the purpose of this section to induce you to infringe any patents or other property right claims or to contest validity of any such claims; this section has the sole purpose of protecting the integrity of the free software distribution system, which is implemented by public license practices. Many people have made generous contributions to the wide range of software distributed through that system in reliance on consistent application of that system; it is up to the author/donor to decide if he or she is willing to distribute software through any other system and a licensee cannot impose that choice.

This section is intended to make thoroughly clear what is believed to be a consequence of the rest of this License.

8. If the distribution and/or use of the Program is restricted in certain countries either by patents or by copyrighted interfaces, the original copyright holder who places the Program under this License may add an explicit geographical distribution limitation excluding those countries, so that distribution is permitted only in or among countries not thus excluded. In such case, this License incorporates the limitation as if written in the body of this License.

9. The Free Software Foundation may publish revised and/or new versions of the General Public License from time to time. Such new versions will be similar in spirit to the present version, but may differ in detail to address new problems or concerns.

Each version is given a distinguishing version number. If the Program specifies a version number of this License which applies to it and "any later version", you have the option of following the terms and conditions either of that version or of any later version published by the Free Software Foundation. If the Program does not specify a version number of this License, you may choose any version ever published by the Free Software Foundation.

10. If you wish to incorporate parts of the Program into other free programs whose distribution conditions are different, write to the author to ask for permission. For software which is copyrighted by the Free Software Foundation, write to the Free Software Foundation; we sometimes make exceptions for this. Our decision will be guided by the two goals of preserving the free status of all derivatives of our free software and of promoting the sharing and reuse of software generally.

NO WARRANTY

11. BECAUSE THE PROGRAM IS LICENSED FREE OF CHARGE, THERE IS NO WARRANTY FOR THE PROGRAM, TO THE EXTENT PERMITTED BY APPLICABLE LAW. EXCEPT WHEN OTHERWISE STATED IN WRITING THE COPYRIGHT HOLDERS AND/OR OTHER PARTIES PROVIDE THE PROGRAM "AS IS" WITHOUT WARRANTY OF ANY KIND, EITHER EXPRESSED OR IMPLIED, INCLUDING, BUT NOT LIMITED TO, THE IMPLIED WARRANTIES OF MERCHANTABILITY AND FITNESS FOR A PARTICULAR PURPOSE. THE ENTIRE RISK AS TO THE QUALITY AND PERFORMANCE OF THE PROGRAM IS WITH YOU. SHOULD THE PROGRAM PROVE DEFECTIVE, YOU ASSUME THE COST OF ALL NECESSARY SERVICING, REPAIR OR CORRECTION.

12. IN NO EVENT UNLESS REQUIRED BY APPLICABLE LAW OR AGREED TO IN WRITING WILL ANY COPYRIGHT HOLDER, OR ANY OTHER PARTY WHO MAY MODIFY AND/OR REDISTRIBUTE THE PROGRAM AS PERMITTED ABOVE, BE LIABLE TO YOU FOR DAMAGES, INCLUDING ANY GENERAL, SPECIAL, INCIDENTAL OR CONSEQUENTIAL DAMAGES ARISING OUT OF THE USE OR INABILITY TO USE THE PROGRAM (INCLUDING BUT NOT LIMITED TO LOSS OF DATA OR DATA BEING RENDERED INACCURATE OR LOSSES SUSTAINED BY YOU OR THIRD PARTIES OR A FAILURE OF THE PROGRAM TO OPERATE WITH ANY OTHER PROGRAMS), EVEN IF SUCH HOLDER OR OTHER PARTY HAS BEEN ADVISED OF THE POSSIBILITY OF SUCH DAMAGES.

END OF TERMS AND CONDITIONS

How to Apply These Terms to Your New Programs

If you develop a new program, and you want it to be of the greatest possible use to the public, the best way to achieve this is to make it free software which everyone can redistribute and change under these terms.

To do so, attach the following notices to the program. It is safest to attach them to the start of each source file to most effectively convey the exclusion of warranty; and each file should have at least the "copyright" line and a pointer to where the full notice is found.

<one line to give the program's name and a brief idea of what it does.> Copyright (C) <year> <name of author>

This program is free software; you can redistribute it and/or modify it under the terms of the GNU General Public License as published by the Free Software Foundation; either version 2 of the License, or (at your option) any later version.

This program is distributed in the hope that it will be useful, but WITHOUT ANY WARRANTY; without even the implied warranty of MERCHANTABILITY or FITNESS FOR A PARTICULAR PURPOSE. See the GNU General Public License for more details.

You should have received a copy of the GNU General Public License along with this program; if not, write to the Free Software Foundation, Inc., 51 Franklin Street, Fifth Floor, Boston, MA 02110-1301 USA.

Also add information on how to contact you by electronic and paper mail.

If the program is interactive, make it output a short notice like this when it starts in an interactive mode:

Gnomovision version 69, Copyright (C) year name of author
Gnomovision comes with ABSOLUTELY NO WARRANTY; for details
type `show w'. This is free software, and you are welcome to
redistribute it under certain conditions; type `show c' for details.

The hypothetical commands ``show w'` and ``show c'` should show the appropriate parts of the General Public License. Of course, the commands you use may be called something other than ``show w'` and ``show c'`; they could even be mouse-clicks or menu items--whatever suits your program.

You should also get your employer (if you work as a programmer) or your school, if any, to sign a "copyright disclaimer" for the program, if necessary. Here is a sample; alter the names:

Yoyodyne, Inc., hereby disclaims all copyright interest in the program ``Gnomovision'` (which makes passes at compilers) written by James Hacker.

<signature of Ty Coon>, 1 April 1989

Ty Coon, President of Vice

This General Public License does not permit incorporating your program into proprietary programs. If your program is a subroutine library, you may consider it more useful to permit linking proprietary applications with the library. If this is what you want to do, use the GNU Lesser General Public License instead of this License.

Copyright Information

No part of this manual, including the products and software described in it, may be reproduced, transmitted, transcribed, stored in a retrieval system, or translated into any language in any form or by any means, except documentation kept by the purchaser for backup purposes, without the express written permission of ASUSTeK COMPUTER INC. ("ASUS").

ASUS PROVIDES THIS MANUAL "AS IS" WITHOUT WARRANTY OF ANY KIND, EITHER EXPRESS OR IMPLIED, INCLUDING BUT NOT LIMITED TO THE IMPLIED WARRANTIES OR CONDITIONS OF MERCHANTABILITY OR FITNESS FOR A PARTICULAR PURPOSE. IN NO EVENT SHALL ASUS, ITS DIRECTORS, OFFICERS, EMPLOYEES OR AGENTS BE LIABLE FOR ANY INDIRECT, SPECIAL, INCIDENTAL, OR CONSEQUENTIAL DAMAGES (INCLUDING DAMAGES FOR LOSS OF PROFITS, LOSS OF BUSINESS, LOSS OF USE OR DATA, INTERRUPTION OF BUSINESS AND THE LIKE), EVEN IF ASUS HAS BEEN ADVISED OF THE POSSIBILITY OF SUCH DAMAGES ARISING FROM ANY DEFECT OR ERROR IN THIS MANUAL OR PRODUCT.

Products and corporate names appearing in this manual may or may not be registered trademarks or copyrights of their respective companies, and are used only for identification or explanation and to the owners' benefit, without intent to infringe.

SPECIFICATIONS AND INFORMATION CONTAINED IN THIS MANUAL ARE FURNISHED FOR INFORMATIONAL USE ONLY, AND ARE SUBJECT TO CHANGE AT ANY TIME WITHOUT NOTICE, AND SHOULD NOT BE CONSTRUED AS A COMMITMENT BY ASUS. ASUS ASSUMES NO RESPONSIBILITY OR LIABILITY FOR ANY ERRORS OR INACCURACIES THAT MAY APPEAR IN THIS MANUAL, INCLUDING THE PRODUCTS AND SOFTWARE DESCRIBED IN IT.

Copyright © 2007 ASUSTeK COMPUTER INC. All Rights Reserved.

Limitation of Liability

Circumstances may arise where because of a default on ASUS' part or other liability, you are entitled to recover damages from ASUS. In each such instance, regardless of the basis on which you are entitled to claim damages from ASUS, ASUS is liable for no more than damages for bodily injury (including death) and damage to real property and tangible personal property; or any other actual and direct damages resulted from omission or failure of performing legal duties under this Warranty Statement, up to the listed contract price of each product.

ASUS will only be responsible for or indemnify you for loss, damages or claims based in contract, tort or infringement under this Warranty Statement.

This limit also applies to ASUS' suppliers and its reseller. It is the maximum for which ASUS, its suppliers, and your reseller are collectively responsible.

UNDER NO CIRCUMSTANCES IS ASUS LIABLE FOR ANY OF THE FOLLOWING: (1) THIRD-PARTY CLAIMS AGAINST YOU FOR DAMAGES; (2) LOSS OF, OR DAMAGE TO, YOUR RECORDS OR DATA; OR (3) SPECIAL, INCIDENTAL, OR INDIRECT DAMAGES OR FOR ANY ECONOMIC CONSEQUENTIAL DAMAGES (INCLUDING LOST PROFITS OR SAVINGS), EVEN IF ASUS, ITS SUPPLIERS OR YOUR RESELLER IS INFORMED OF THEIR POSSIBILITY.

Service and Support

Visit our multi-language web site at <http://support.asus.com>

Free Manuals Download Website

<http://myh66.com>

<http://usermanuals.us>

<http://www.somanuals.com>

<http://www.4manuals.cc>

<http://www.manual-lib.com>

<http://www.404manual.com>

<http://www.luxmanual.com>

<http://aubethermostatmanual.com>

Golf course search by state

<http://golfingnear.com>

Email search by domain

<http://emailbydomain.com>

Auto manuals search

<http://auto.somanuals.com>

TV manuals search

<http://tv.somanuals.com>