

Disassembly Procedure

Please follow the information provided in this section to perform the complete disassembly procedure of the notebook. Be sure to use proper tools described before.

ASUS W5F Series Notebook consists of various modules. This chapter describes the procedures for the complete notebook disassembly. In addition, in between procedures, the detailed disassembly procedure of individual modules will be provided for your service needs.

The disassembly procedure consists of the following steps:

- Battery Module
- HDD Module
- Second Memory Module
- CPU Module
- Optical Drive Module
- Keyboard Module
- First Memory Module
- LCD Module
- Top Case Module
- Motherboard Module
- Mini PCI Module

BATTERY

Battery Module

The illustration below shows how to remove the battery module.

1. Press latch to open the battery module, then lift battery module away from the system.



HDD
MODULE

HDD Module

The illustrations below show how to remove the HDD module from the notebook.

Removing HDD Module

1. Remove 2 screws (M2*5L(K)), then remove the HDD door.



2. Remove 1 screw (M2*12L(K)), lift the hard disk module and take away the hard disk module

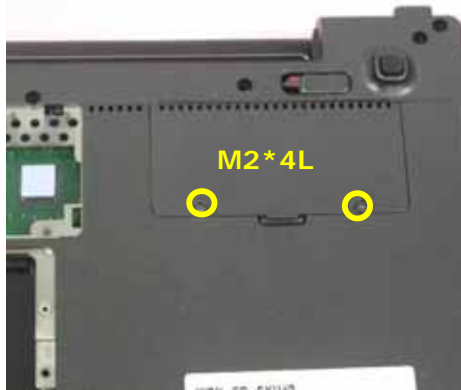


Memory Module

The W5F Series Notebook have onboard RAM. There is one SO-DIMM sockets for installing SO-DIMM RAM. It can upgrade the total memory size up to 1GB with a 512MB module on each socket.

Removing Memory module

1. Remove 2 screws (M2*4L(K)), then remove the Memory cover.



2. Pop the module up to a 45° angles, and then pulling out the module in that angle.



CPU Module

The illustrations below show how to remove the CPU module from the notebook.

Removing CPU Module

1. Remove 3 screws (M2*4L(K)), then remove the back cover.



2. Remove 4 screws (M2*4L(K)) and disconnect the FAN connector and then take away the Fan Module.



3. Turn the non-removable screw here 180 degrees counter-clockwise to loosen the CPU and take the CPU away



Note: If thermal module has no thermal pad on it, please plus a thermal pad on the CPU die before assembling.

OPTICAL
DRIVE
REMOVAL

Optical Drive Module

Remove 3 screws and use tweezers to put the Optical Drive Module out.



KEYBOARD

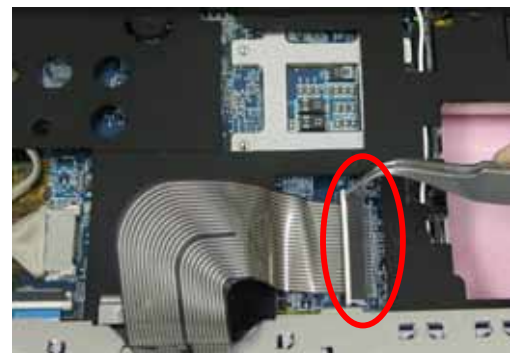
Keyboard Module

The illustration of below shows how to remove the keyboard

K/B COVER
REMOVAL

Removing Keyboard Cover

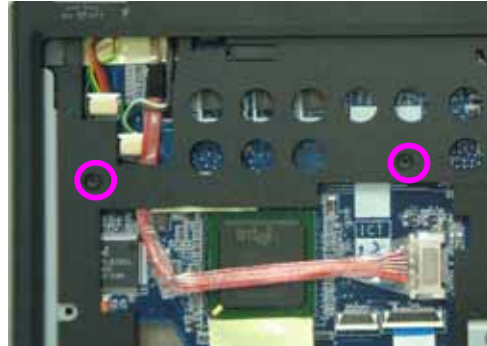
1. Unlock 3 keyboard latches then pull out the keyboard forward and lay the keyboard on the front side then disconnect the FPC.



Top Case Module

Removing Top Case Module

1. Disconnect all FPC and 2 screws on the top case.



2. Take away the both hinge cover.



3. Remove 17 screws (M2*6L(K)) on bottom case.



4. Remove 2 Antenna cables from Wireless LAN Module and organize tables.



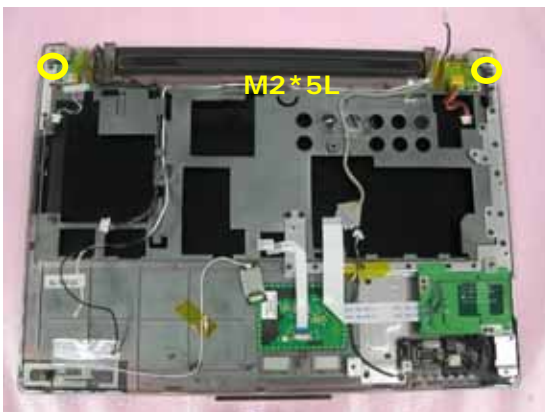
5. Separate the Bottom Case from the Top Case module.



TOP CASE
MODULE
REMOVE

Removing Top Case Module

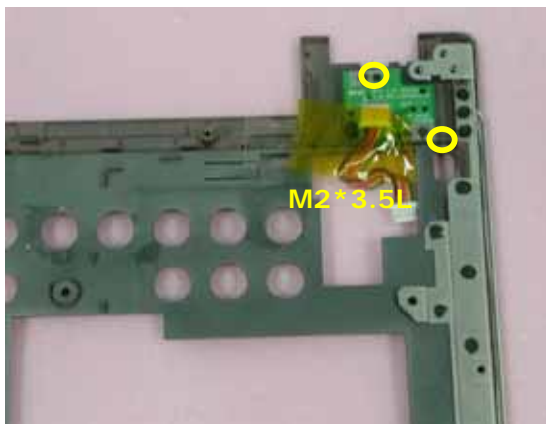
6. Remove 2 screws (M2*5L(K)) from the both hinge.



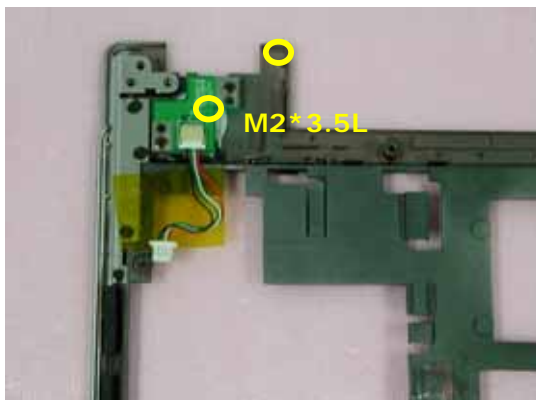
7. Separate the top case from the LCD module.



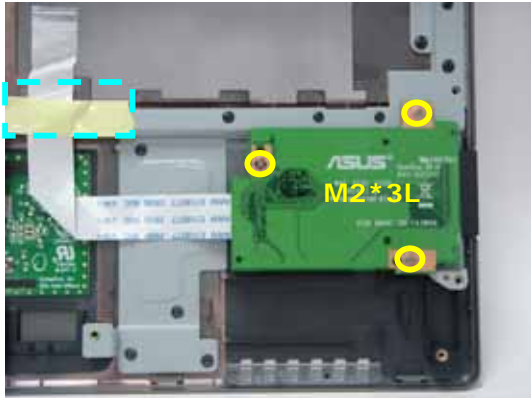
8. Remove 2 screws (M2*3.5L(K)) and take away the LID board.



9. Remove 2 screws (M2*3.5L(K)) and take away the Power board.



10. Remove 3 screws (M2*3L(K)) & 1 piece of tape then take away the Card reader module.



11. Disconnect the FPC on the Touchpad and take it away.



12. Disconnect the Bluetooth antenna and take the Bluetooth module away.



LCD
MODULE

LCD Module

The illustrations below show how to remove and disassemble the LCD module. The module contains LCD panel, Inverter board, LCD Hinge bracket, Hinge cover, LCD front cover, LCD back cover

LCD
REMOVAL

Removing LCD Module

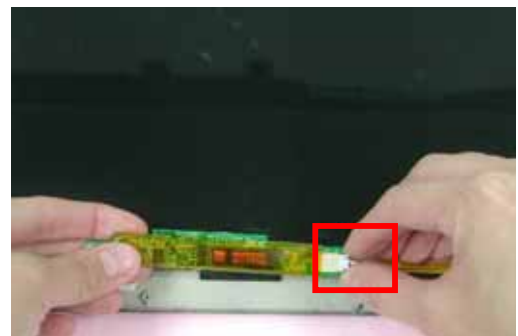
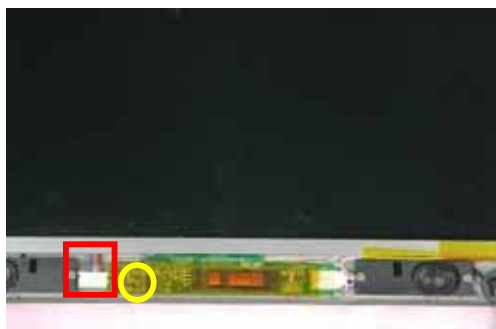
1. Remove 6 rubber pads and 6 screws (M2.5 x 4L) from LCD module.



2. Praying the inside edges of the top front bezel, then separate it from LCD back cover and take LCD front bezel away.



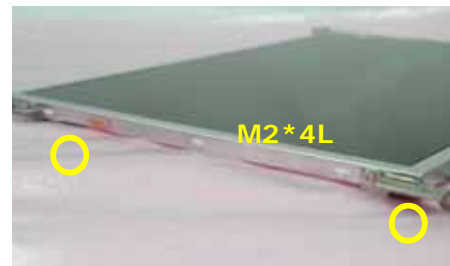
3. Disconnect the cable and remove 1 screw then take away Inverter board and disconnect the LCD cable.



4. Remove 4 screws(M2.5*4L(K)) and take away the LCD module .



5. Remove 2 screws(M2*4L(K)) on the right LCD bracket , and 2 screws on the left side to disassemble LCD brackets.



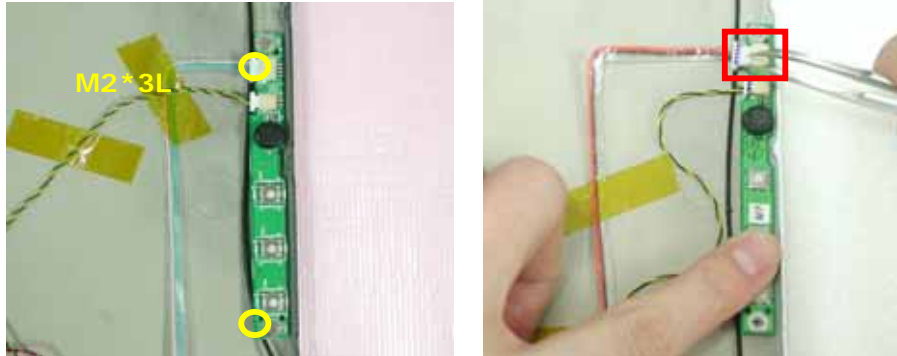
6. Remove 2 tapes and disconnect coaxial cable then take it away.



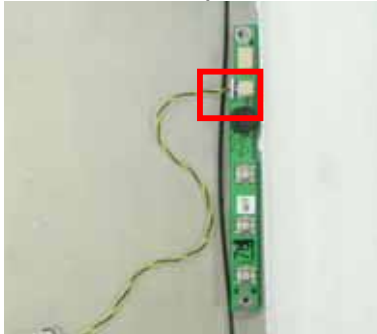
7. Remove 4 screws(M2*4L(K)) on the right & left speaker then take away the both speakers.



8. Remove 2 screws (M2*3L(K)) and cable.



9. Remove the speaker cable and take the Microphone board off.



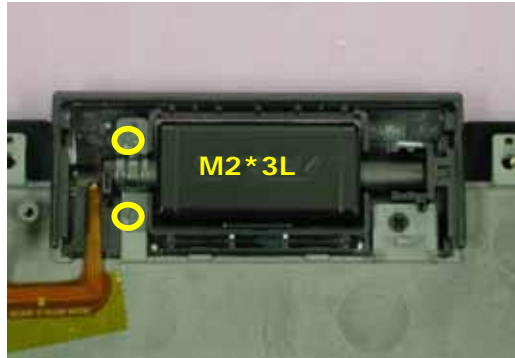
10. Remove 1 screw (M2*3L(K)) and disconnect the FPC then take the CMOS camera board off.



11. Take away the camera cover.



12. Remove 2 screws (M2*3L(K)) and disconnect the FPC then take the bracket.



10. Take away the CMOS camera.



MOTHERBOARD
MODULE

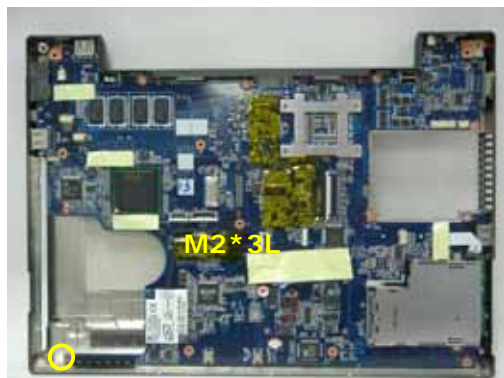
Motherboard module

The illustrations below show how to disassemble and remove the Motherboard module

MDC
MODULE
REMOVAL

Removing Motherboard Module

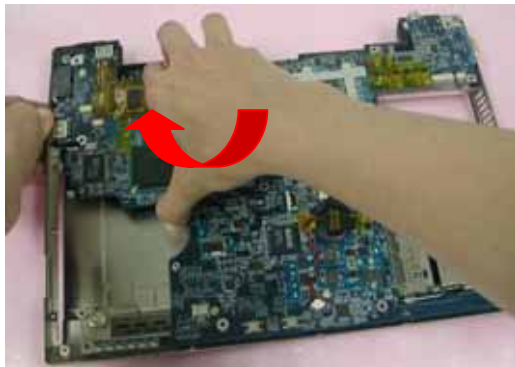
1. Remove 1 screw (M2*3L(K)) on the Motherboard Module.



2. Remove 2 screws (M2*3L(K)) and disconnect the cable then take away the Modem board.



3. Take away the Motherboard board from the left side.



4. Remove 2 screws (M2*3L(K)) and take away ODO Jack board



5. Disconnect the ODO Jack FPC.



WIRELESS
MODULE

WIRELESS
MODULE
REMOVAL

Wireless module

The illustrations below show how to disassemble and remove the Wireless module

Removing Wireless Module

1. Remove the Wireless LAN module by opening the 2 latches aside, and pull out the module.



2. Remove 1 screw (M2*3L (K)) and take away the TPM board .



Free Manuals Download Website

<http://myh66.com>

<http://usermanuals.us>

<http://www.somanuals.com>

<http://www.4manuals.cc>

<http://www.manual-lib.com>

<http://www.404manual.com>

<http://www.luxmanual.com>

<http://aubethermostatmanual.com>

Golf course search by state

<http://golfingnear.com>

Email search by domain

<http://emailbydomain.com>

Auto manuals search

<http://auto.somanuals.com>

TV manuals search

<http://tv.somanuals.com>