



DSU III S2W

2-Wire Switched 56 DSU/CSU

Product Features

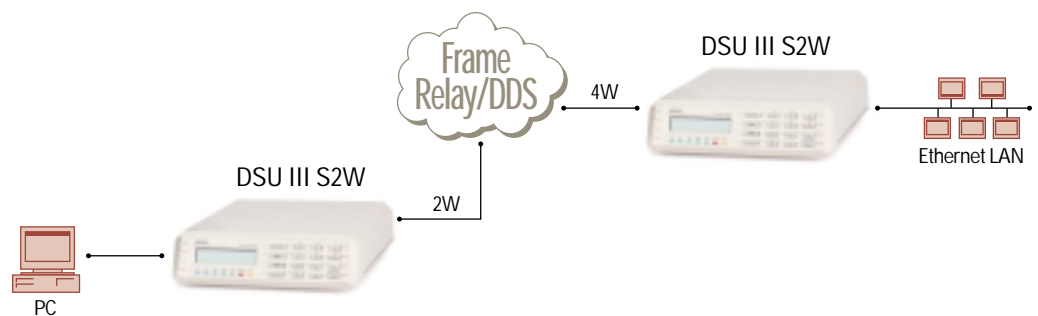
- Dialing by V.25 bis, EIA-366, enhanced AT command set, keypad or stored number
- Compatible with Northern Telecom Datapath™ technology
- EIA-232 and V.35 DTE interfaces
- Auxiliary EIA-232 or EIA-366 dialing interface
- Multiple tests and diagnostics
- Synchronous and asynchronous features (including 38.4 and 57.6 kbps) DTE rates
- T-Link rate adaption protocol
- Auto answer of incoming calls
- Industry-leading five-year North American warranty

The ADTRAN® DSU III S2W is a **high-performance data service unit/channel service unit (DSU/CSU) based on Northern Telecom Datapath® technology**. The DSU III S2W incorporates advanced features utilizing microprocessor and VLSI technology in a standalone package. Using the Northern Telecom T-Link® rate adaption protocol and time compression multiplexing (TCM), the DSU III S2W transports customer synchronous (up to 64 kbps) or asynchronous (up to 57.6 kbps) data over a 2-wire local loop to the network. Both EIA-232 and V.35 DTE interfaces are provided for all data rates.

The DSU III S2W supports manual (invoking a stored number or keypad) or automatic dialing. DTE interface dialing is supported by use of AT commands or V.25 bis in-band dialing. A separate DB-25 connector is provided for EIA-366 parallel dialing or out-of-band AT dialing.

The unit responds to standard loopback commands from the service provider and provides extensive test capabilities. Tests include DTE, DTE and loop, DTE with test pattern, and loop only.

The front panel of the standalone DSU III S2W contains a two-line by 16-character LCD display and seven LEDs. The front panel keypad operates a simple menu structure which accesses setup, selection of test modes, local configuration, and manual or automatic dialing from stored numbers. Configuration is also available by using the AT command set.





ADTRAN, Inc.

Attn: Enterprise Networks
901 Explorer Boulevard
Huntsville, AL 35806

P.O. Box 140000
Huntsville, AL 35814-4000

256 963-8000 voice
256 963-8699 fax
256 963-8200 fax back

General Information
800 9ADTRAN
info@adtran.com
www.adtran.com

**Pre-Sales
Technical Support**
800 615-1176 toll-free
application.engineer@adtran.com
www.adtran.com/support

Where to Buy
877 280-8416 toll-free
channel.sales@adtran.com
www.adtran.com/where2buy

**Post-Sales
Technical Support**
888 423-8726
support@adtran.com
www.adtran.com/support

**ACES Installation &
Maintenance Service**
888 874-ACES
aces@adtran.com
www.adtran.com/support

International Inquiries
256 963 8000 voice
256 963-6300 fax
international@adtran.com
www.adtran.com/international

**For the regional office
nearest you, visit:**
www.adtran.com/where2buy



ADTRAN is an
ISO 9001: 2000 certified supplier.



ADTRAN is a
TL 9000 3.0 certified supplier.

61200015L2-8E April 2002
Copyright © 2004 ADTRAN, Inc.
All rights reserved.

DSU III S2W

2-Wire Switched 56 DSU/CSU

Product Specifications

Operating modes

- 2-wire Switched 56 (SW56)

DTE Rates

- DTE-to-loop rate matching in both switched and virtual private line mode
- **Synchronous rates:** 1.2, 2.4, 4.8, 9.6, 19.2, 38.4, 48, 56, and 64 kbps
- **Asynchronous rates:** 1.2, 2.4, 4.8, 9.6, 19.2, 38.4 and 57.6 kbps

Network Interface

- 2-wire SW56 based on Northern Telecom Datapath® technology

DTE Interface

- Both EIA-232 and V.35 electrical and physical DTE interfaces

Line Interface

- RJ-11

Dialing Options

- EIA-366 or AT out-of-band
- AT in-band dial commands
- Front panel keypad (standalone unit only)
- V.25 bis in-band (async, bi-sync, SDLC)
- Switch stored number
- Switch speed dial
- DTR stored number (pulsed/constant)

Diagnostics

- **Local:** DTE, DTE and loop, DTE with test pattern, loop only, test pattern
- **Remote:** V.54 with 2047 and 511 test patterns or data from DTE

Agency Approvals

- UL 1950, CSA
- FCC Part 15, Class A

Environment

- **Operating:** 0°C to 50°C (32°F to 122°F)
- **Storage:** -20°C to 70°C (-4°F to 158°F)
- Relative Humidity: Up to 95%, non-condensing

Physical

Dimensions

- **Standalone:** 2.25" H, 8.75" W, 10.25" D

Weight

- **Standalone:** 3 lbs

Power

- 115 vAC, 60 Hz, 8 watts

Product Includes

- 6-pin to 6-pin modular cable
- User manual

Ordering Information

Equipment	Part #
DSU III S2W	1200015L2



Specifications subject to change without notice. ADTRAN is a registered trademark of ADTRAN, Inc. All registered trademarks and trademarks mentioned in this publication are the property of their respective owners.

Free Manuals Download Website

<http://myh66.com>

<http://usermanuals.us>

<http://www.somanuals.com>

<http://www.4manuals.cc>

<http://www.manual-lib.com>

<http://www.404manual.com>

<http://www.luxmanual.com>

<http://aubethermostatmanual.com>

Golf course search by state

<http://golfingnear.com>

Email search by domain

<http://emailbydomain.com>

Auto manuals search

<http://auto.somanuals.com>

TV manuals search

<http://tv.somanuals.com>