

# **Addonics**

TECHNOLOGIES

## **Saturn Cipher Combo Hard Drive (SCCHD)**

**For Following Models:**

**SCCHDSAU64, SCCHDSAU128  
SCCHDSASA64, SCCHDSASA128  
SCCHDIU64, SCCHDIU128  
SCCHDISA64, SCCHDISA128**

**Users Guide  
Revision 1.0**

## FCC Warning Statement

---

This equipment has been tested and found to comply with the limits for a class B digital device pursuant to Part 15 of the FCC rules. These limits are designed to provide reasonable protection against harmful interference in a residential installation. This equipment generates uses and can radiate radio frequency energy. If not installed and used in accordance with the instructions, it may cause harmful interference to radio communications. However, there is no guarantee that interference will not occur in a particular installation. If the equipment does cause harmful interference to radio or television reception, which can be determined by turning the equipment on and off, the user is encouraged to try and correct the interference by one or more of the following suggestions.

- Reorient or relocate the receiving antenna
- Increase the distance between the equipment and the receiver
- Connect the equipment to a different power outlet other than the one where receiver is connected
- Consult a certified television or radio technician

## Contents

---

<b>FCC Warning</b> .....	1
<b>Contents</b> .....	2
<b>Chapter 1</b> Saturn Cipher Combo Hard Drive package content .....	3-4
For SATA hard drive .....	3
For IDE hard drive .....	4
<b>Chapter 2</b> Saturn Cipher key.....	5
<b>Chapter 3</b> Keeping track of the hard drive .....	6
<b>Chapter 4</b> Saturn Cipher Drive enclosure.....	7-8
Drive enclosure for SATA hard drive .....	7
Drive enclosure for IDE hard drive.....	8
<b>Chapter 5</b> Installing hard drive into the drive enclosure .....	9
<b>Chapter 6</b> Attaching USIB interface cable .....	10
<b>Chapter 7</b> Saturn IDE Drive Cradle .....	11
<b>Chapter 8</b> Drive Cradle Installation and using the Saturn Combo Hard Drive .....	12
<b>Chapter 9</b> USB Interface Cable Installation .....	13
USB 2.0 USIB interface cable .....	13
eSATA Interface Cable .....	14
Technical Support & Contact Information.....	15

## Chapter 1 Saturn Cipher Combo Hard Drive Package Content

### For SATA hard drive

Models	Contents
SCCHDSAU64	Saturn Cipher SATA drive enclosure 64-bit (SCSAUSCS64) Saturn IDE drive cradle (AASIDEBY) Saturn Cipher key 64-bit, 2 pieces (AAENKEY64-2) eSATA USIB interface cable (AASAC-605E) 110/220V AC/DC 12/5V power adapter (AAPAC12V-US) Driver CD, this user guide
SCCHDSAU128	Saturn Cipher SATA drive enclosure 128-bit (SCSAUSCS128) Saturn IDE drive cradle (AASIDEBY) Saturn Cipher key 128-bit, 2 pieces (AAENKEY128-2) eSATA USIB interface cable (AASAC-605E) 110/220V AC/DC 12/5V power adapter (AAPAC12V-US) Driver CD, this user guide
SCCHDSASA64	Saturn Cipher SATA drive enclosure 64-bit (SCSAUSCS64) Saturn IDE drive cradle (AASIDEBY) Saturn Cipher key 64-bit, 2 pieces (AAENKEY64-2) eSATA USIB interface cable (AASAC-605E) 110/220V AC/DC 12/5V power adapter (AAPAC12V-US) This user guide
SCCHDSASA128	Saturn Cipher SATA drive enclosure 128-bit (SCSAUSCS128) Saturn IDE drive cradle (AASIDEBY) Saturn Cipher key 128-bit, 2 pieces (AAENKEY128-2) eSATA USIB interface cable (AASAC-605E) 110/220V AC/DC 12/5V power adapter (AAPAC12V-US) This user guide

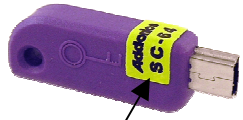
## Saturn Cipher Combo Hard Drive Package Content

### For IDE hard drive

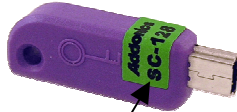
Models	Contents
SCCHDIU64	Saturn Cipher IDE drive enclosure 64-bit (SCIUSCS64) Saturn IDE drive cradle (AASIDEBY) Saturn Cipher key 64-bit, 2 pieces (AAENKEY64-2) USB 2.0 USIB interface cable (AAUSBC-309) 110/220V AC/DC 12/5V power adapter (AAPAC12V-US) Driver CD, this user guide
SCCHDIU128	Saturn Cipher IDE drive enclosure 128-bit (SCIUSCS128) Saturn IDE drive cradle (AASIDEBY) Saturn Cipher key 128-bit, 2 pieces (AAENKEY128-2) USB 2.0 USIB interface cable (AAUSBC-309) 110/220V AC/DC 12/5V power adapter (AAPAC12V-US) Driver CD, this user guide
SCCHDISA64	Saturn Cipher IDE drive enclosure 64-bit (SCIUSCS64) Saturn IDE drive cradle (AASIDEBY) Saturn Cipher key 64-bit, 2 pieces (AAENKEY64-2) eSATA USIB interface cable (AASAC-605E) 110/220V AC/DC 12/5V power adapter (AAPAC12V-US) This user guide
SCCHDISA128	Saturn Cipher IDE drive enclosure 128-bit (SCIUSCS128) Saturn IDE drive cradle (AASIDEBY) Saturn Cipher key 128-bit, 2 pieces (AAENKEY128-2) eSATA USIB interface cable (AASAC-605E) 110/220V AC/DC 12/5V power adapter (AAPAC12V-US) This user guide

## Chapter 2 Saturn Cipher key

Check to make sure you have the correct version of Saturn Cipher key. The key should match the label at the back of the drive enclosure



Yellow label SC-64 stands for Saturn Cipher 64-bit



Green label SC-128 stands for Saturn Cipher 128-bit

### **IMPORTANT**

*There is no back door for the Saturn Cipher encrypted hard drive if the key is lost or stolen.*

To ensure there is a spare key, Your Saturn Cipher bundled kit comes with one pair of Saturn Cipher keys. These 2 keys have identical encryption code. One of these keys should be kept in a safe and secure location and can be sent back to Addonics for duplicating additional keys. If you are down to the last key, be sure to make a back up of all the data stored inside your encrypted hard drive prior to sending the last key to Addonics. Addonics is not responsible for key lost in the mail or retrieval of the data inside the encrypted hard drive.

- Ø The CIPHER key MUST be inserted at the front of the drive enclosure in order for the drive to be ACTIVATED.
- Ø Once the drive is INITIALIZED using the Cipher Key that comes with the kit, the drive can only be accessed by the original key.
- Ø The 2 keys that come with each Saturn bundled kit has their own unique encryption code. So the keys among different kits are not interchangeable.
- Ø If you have multiple sets of Saturn Cipher kits and would like all the keys to have the same encryption code, you may make this request at the time of your order or mail the keys together with master key back to Addonics to recode them for you. Again be sure that you keep a spare key with you. Make a back up of your data if you are mailing in your last key.

## Chapter 3 Keeping track of the hard drive

If you are using the Saturn Cipher drive enclosure to encrypted multiple hard drives. It is important to label your hard drive if you are taking the drive out of the enclosure. The hard drive with Saturn Cipher encryption will look like a brand new drive when attach directly to the IDE or SATA controller of a computer. There will be no partition or any hint to indicate that the drive contains encrypted data. When the drive is partitioned, all the encrypted data will be lost.

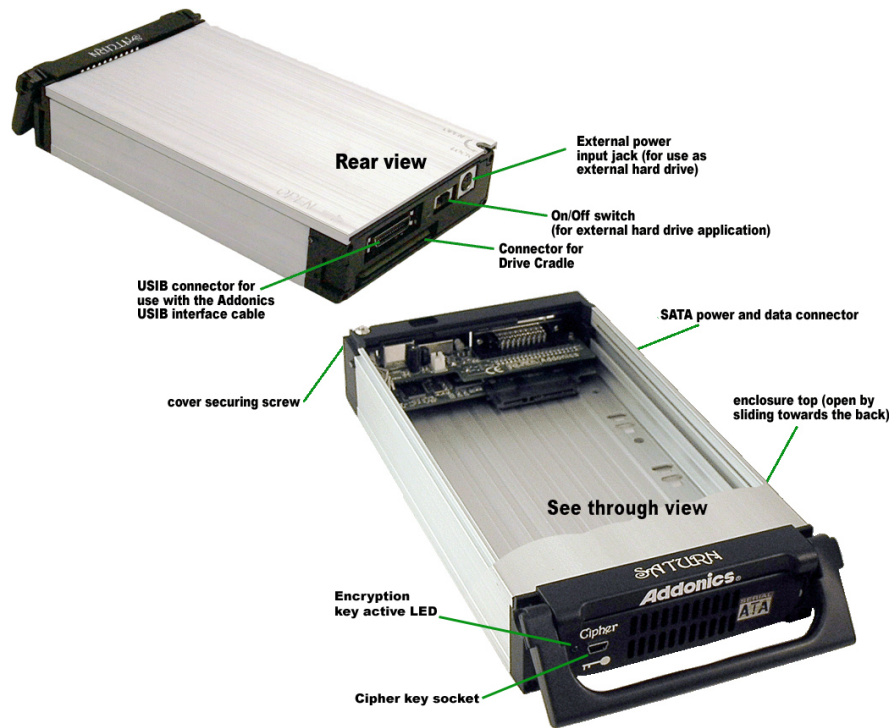
The same holds true if a hard drive already has data on it is installed into the Saturn Cipher drive enclosure. The computer detects the hard drive as a brand new drive or a drive that is unallocated. Once you proceed to partition the drive, the data that was on the hard drive will be erased and cannot be recovered.

A Saturn Cipher encrypted hard drive can be moved to another Saturn Cipher drive enclosure. But the same key used in encrypting the hard drive must be used in the new drive enclosure in order to access the drive.

**If you are installing multiple Saturn Cipher drive kits into a large organization, it is important to keep track of the drive and the encryption key. Once it gets mixed up, there is no possible way to recover the data on the encrypted hard drive.**

## Chapter 4 Saturn Cipher Drive Enclosure

### Drive enclosure for SATA hard drive

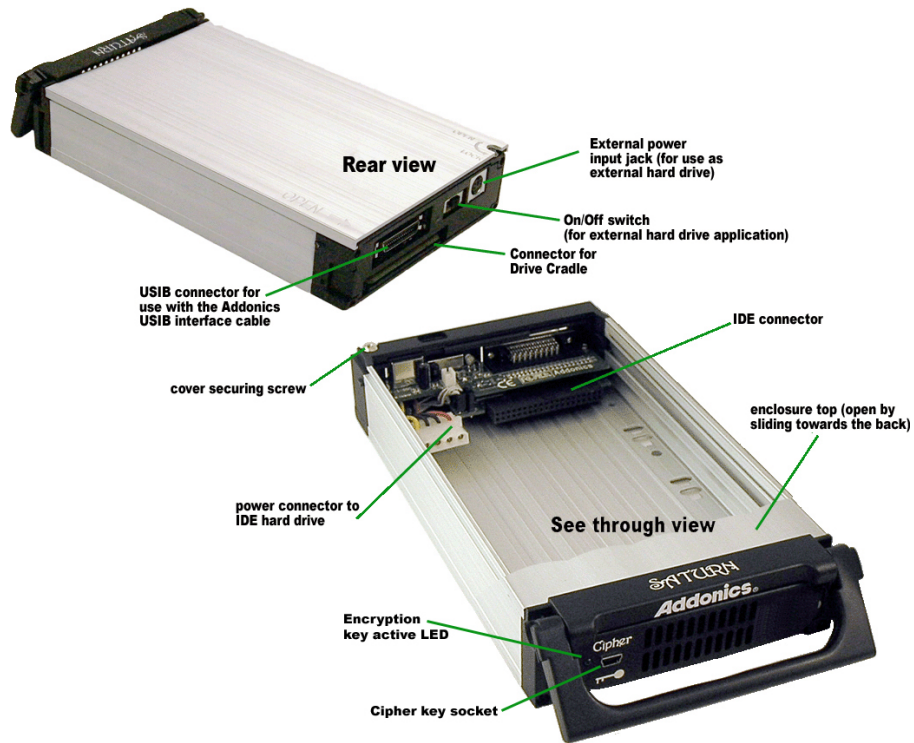


**Note:** The power switch on the back of the drive **MUST** be set to the right to power the hard drive for external use.

**Be sure the Saturn cipher key is inserted into the drive enclosure prior to turning on the power or attaching the USIB interface cable to the computer. Hard drive will not be detected if the interface cable is attached to the computer without the Cipher key inserted first. Under such condition, the power to the drive enclosure will have to be turned off and turned back on with the Cipher key already inserted into the drive enclosure in order for the hard drive to be detected by the system.**



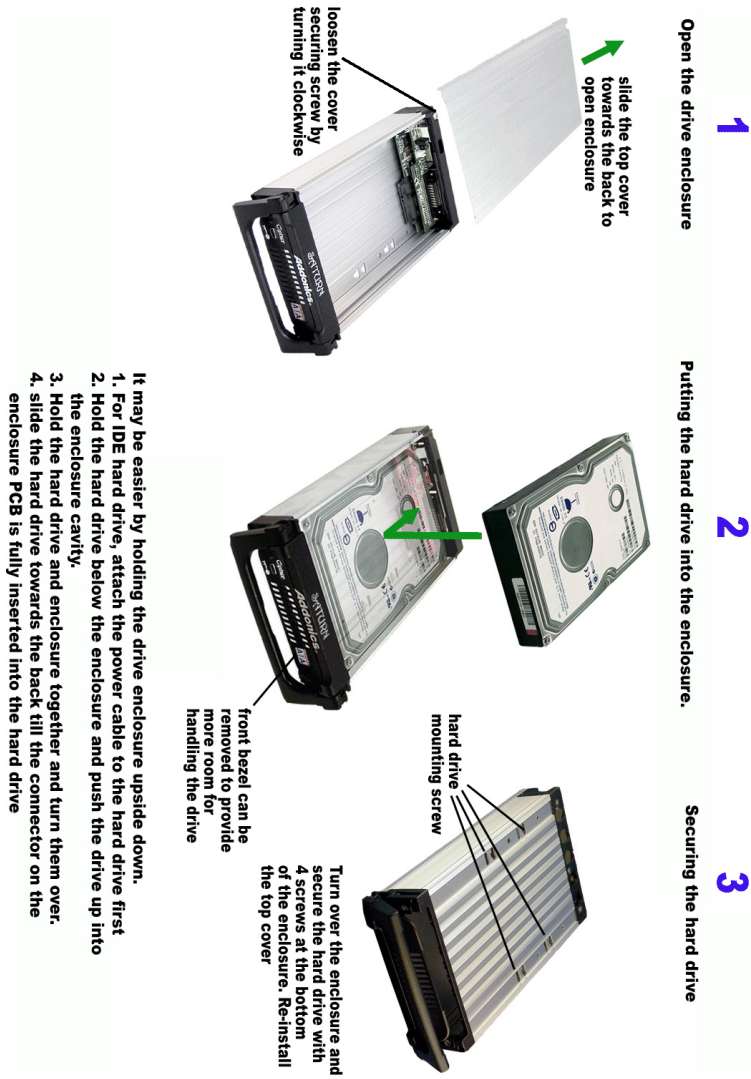
## Drive enclosure for IDE hard drive



**Note:** The power switch on the back of the drive MUST be set to the right to power the hard drive for external use.

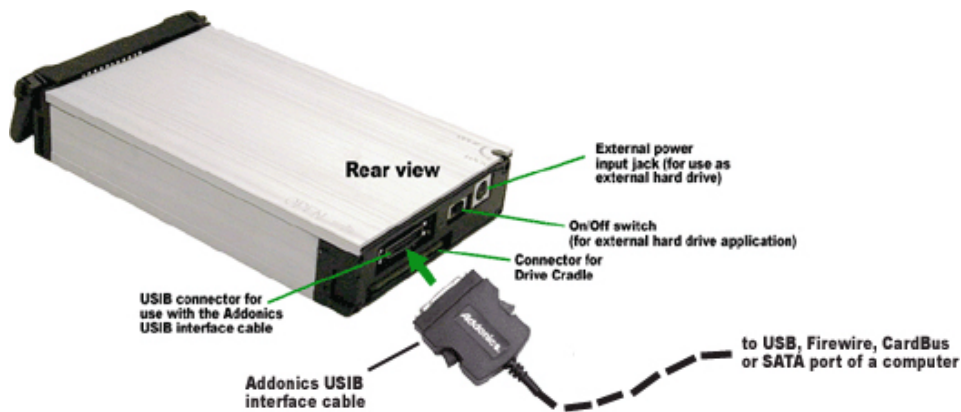
**Be sure the Saturn cipher key is inserted into the drive enclosure prior to turning on the power or attaching the USB interface cable to the computer. Hard drive will not be detected if the interface cable is attached to the computer without the Cipher key inserted first. Under such condition, the power to the drive enclosure will have to be turned off and turned back on with the Cipher key already inserted into the drive enclosure in order for the hard drive to be detected by the system.**

## Chapter 5 Installing hard drive into the drive enclosure



**Note: Brand New Hard drive must be Partitioned and Formatted first before a drive letter is assigned by the OS.**

## Chapter 6 Attaching USIB interface cable



Be sure the Saturn cipher key is inserted into the drive enclosure prior to turning on the power or attaching the USIB interface cable to the computer. Hard drive will not be detected if the interface cable is attached to the computer without the Cipher key inserted first. Under such condition, the power to the drive enclosure will have to be turned off and turned back on with the Cipher key already inserted into the drive enclosure in order for the hard drive to be detected by the system.

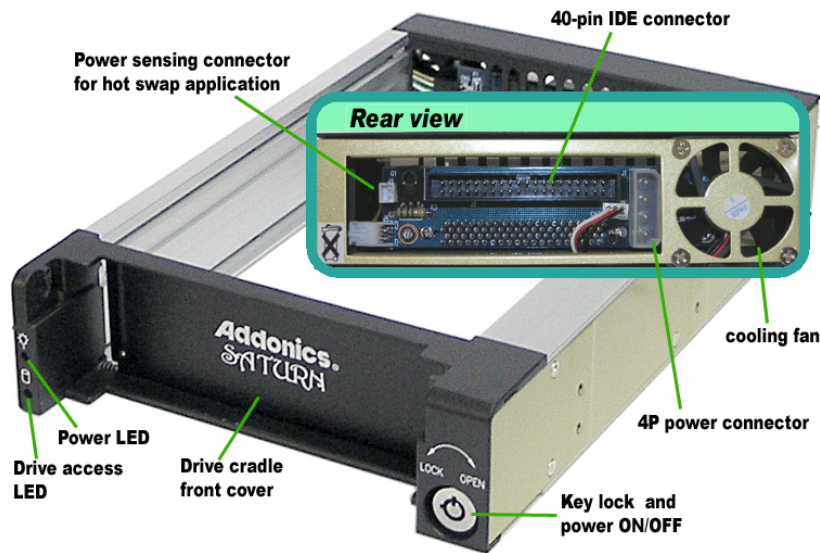
The Saturn Cipher drive enclosure can be used as an internal removable hard drive or as a drive cartridge by installing the optional drive cradle into the drive bay of a Desktop, Server or any computing equipment. For more detail of these options, visit the Saturn Cipher page on Addonics web site [www.addonics.com](http://www.addonics.com).

## Chapter 7 Saturn IDE Drive cradle

### Overview

Drive cradle, also known as fixed tray, is the frame that mounts inside the drive bay of a Desktop, Server or any computing equipment. The drive cradle provides both power and data connection between the computer and the drive enclosure.

The Saturn IDE Drive cradle fits into any standard 5 ¼” drive bay and connects to the computer via IDE interface. The Saturn IDE drive cradle is compatible with all Saturn Drive enclosures and Saturn Cipher Drive enclosures. As a result you can insert SATA or IDE hard drive, encrypted or unencrypted, into the same drive cradle of a computer.



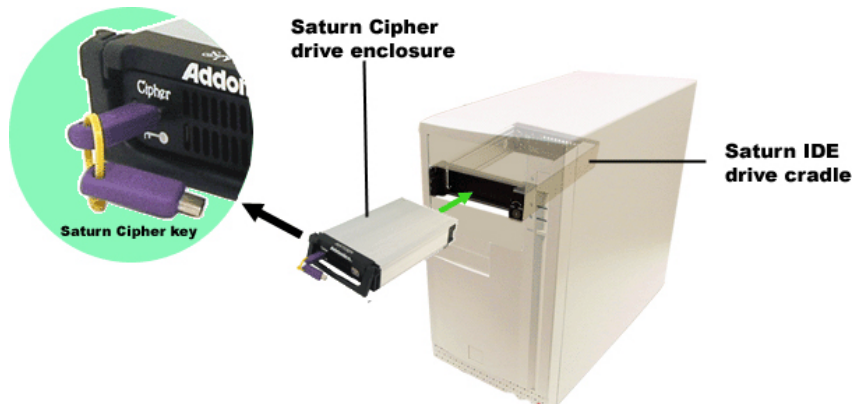
### Building a hot swap drive bay

You can change the IDE connection of the drive cradle to USB 2.0 or SATA by attaching an Addonics IO converter – IDE-USB, IDE-SATA, or the IDE-USIB connector board to the 40-pin IDE connector on back of the drive cradle. When the power input of these IO converters is connected to the unique power sensing connector on the back of the Saturn IDE drive cradle, you can have hot swap capability of the hard drives, just like using a tape cartridge system, without shutting down the computer.

To learn about the full family of Addonics IO converters, please visit [www.addonics.com/product/io/](http://www.addonics.com/product/io/)

## Chapter 8 Drive Cradle installation and using the Saturn Combo Hard Drive

Insert the IDE drive cradle into a standard 5 ¼” drive bay of a computer and secure the drive cradle to the drive bay with 4 screws (already included with the drive cradle), 2 on each side of the drive bay.



Be sure the Saturn cipher key is inserted into the drive enclosure prior to turning on the power of the drive cradle. Hard drive will not be detected by the computer if the power to the drive cradle is turned on without the Cipher key. Under such condition, the system has to be restarted with the Cipher key already inserted into the drive enclosure in order to detect the hard drive.

The key lock of the drive cradle must be in the lock position in order to get power to the hard drive. This also locks the drive enclosure inside the drive cradle.

Once the drive is detected by the system OS, the Saturn Cipher key may be removed from the drive enclosure. The Saturn Cipher hard drive will continue operating normally till it is removed from the system or powered off.

## Chapter 9 USIB interface cable installation

### USB 2.0 USIB interface cable



- Ø Since USB 2.0 Hi-Speed is an evolution of the existing USB 1.1 specification, it is fully forward and backward compatible with current USB systems.
- Ø If you do not have an USB2.0 port, you may install an optional USB2.0 adapter or controller

### USB driver installation For Win98 and Win98SE

1. Make sure your computer is up and running.
2. Insert the USB cable to the USB Port.
3. A "New Hardware Found" message shall pops up.
4. Follow wizard and point to the location of the driver. (Follow the steps from the Driver Disc to where you saved the driver files)
5. Let Windows finish the installation and that's it.
6. Double click My Computer icon and there should be an extra drive letter for the Saturn Cipher ExDrive.
7. You may now access the drive.

**Note:** Saturn Cipher ExDrive is Plug and play under Windows XP, and Me, 2000. There is no third party driver needed.

**Brand New Hard drive must be Partitioned and Formatted first.**

## eSATA USIB interface cable



## eSATA Saturn Cipher ExDrive Installation For Win98SE, Me, 2000 and XP

**Note:** There no drivers needed to use the Serial ATA cable as long as the drivers are installed for the Serial ATA Controller card/chip. It is plug and play.

**Note:** Brand New Hard drive must be Partitioned and Formatted first.

## Technical Support

If you need assistance to get your unit functioning properly, please call Addonics Technical Support. Our technical staff will be happy to assist you, but they will need your help to do so. Calling the technical support staff without all the proper information can be both time consuming and frustrating. Here are some tips to help you out:

- (1) MODEL NUMBER – Please have this number on hand.
- (2) SYSTEM INFORMATION – Type of computer, peripherals, etc.
- (3) OPERATING SYSTEM – What version of Windows
- (4) WHAT'S THE TROUBLE? – Give enough information About your problem so that we can recreate and diagnose it.

**FREE Software Drivers for all Addonics Technologies**  
Products are available 24 hours per day at the  
World Wide Web Site: [www.addonics.com](http://www.addonics.com).

## Contact Information

Addonics Technologies  
2466 Kruse Drive  
San Jose CA, 95131

Phone: 408-433-3899  
Fax: 408-433-3898  
Email: [sales-team@addonics.com](mailto:sales-team@addonics.com)  
Internet: <http://www.addonics.com>

## TECHNICAL SUPPORT

Phone: 408-433-3855  
Hours: 8:30-6:00 PST  
Email: [Techinfo@addonics.com](mailto:Techinfo@addonics.com)



## Free Manuals Download Website

<http://myh66.com>

<http://usermanuals.us>

<http://www.somanuals.com>

<http://www.4manuals.cc>

<http://www.manual-lib.com>

<http://www.404manual.com>

<http://www.luxmanual.com>

<http://aubethermostatmanual.com>

Golf course search by state

<http://golfingnear.com>

Email search by domain

<http://emailbydomain.com>

Auto manuals search

<http://auto.somanuals.com>

TV manuals search

<http://tv.somanuals.com>