



Wireless LAN 802.11g/b, 54Mbps/2.4GHz Broadband Router with Firewall Support



Model # : AWR-854G

User's Manual

FCC Warning

This device is intended to use under the following conditions:

- 1) The antenna must be installed such that 20cm is maintained between the antenna and users.
- 2) The transmitter module may not be co-located with any other transmitter or antenna.

IMPORTANT NOTE: In the event that these conditions can not be met (for example certain laptop configurations or co-location with another transmitter), then the FCC authorization is no longer considered valid and the FCC ID can not be used on the final product. In these circumstances, the user will be responsible for re-evaluating the end product (including the transmitter) and obtaining a separate FCC authorization.

This transmitter module is authorized only for use in devices where the antenna may be installed such that 20 cm may be maintained between the antenna and users (for example access points, routers, wireless ADSL modems, and similar equipment). The final end product must be labeled in visible area with the following:

“Contains TX FCC ID: SMW-GM-100”

“IMPORTANT NOTE: To comply with FCC RF exposure compliance requirements, the antenna used for this transmitter must be installed to provide a separation distance of at least 20cm from all persons and must not be co-located or operating in conjunction with any other antenna or transmitter.”

Notice

Changes or modifications to the equipment, which are not approved by the party responsible for compliance could affect the user's authority to operate the equipment. Company has an on-going policy of upgrading its products and it may be possible that information in this document is not up-to-date. Please check with your local distributors for the latest information.

Copyright

1999 All Rights Reserved.

No part of this document can be copied or reproduced in any form without written consent from the company.

Trademarks:

All trade names and trademarks are the properties of their respective companies.

Revision History

Revision	History
V1.0	First release

Table of Contents

1	Introduction	3
1.1	Features	4
1.2	Package Contents	5
1.3	LEDs Indication & Connector of Wireless Router	6
1.4	System Requirements	7
1.5	Installation Instruction	7
2	PC Configuration	8
2.1	TCP/IP Networking Setup	8
2.2	Setting up Internet Access	18
2.3	Configure Wireless Station	20
3	Setup Wireless Router Configurations via Web Browser	21
3.1	Start Your Web Browser	21
3.2	System	22
3.3	WAN	28
3.4	LAN	30
3.5	NAT	33
3.6	Firewall	38
3.7	Routing	44
3.8	UPnP	44
3.9	DDNS	46
3.10	Wireless	47
3.11	Wizard	54
3.12	Help	57
3.13	Logout	59
4.	Troubleshooting	60

1. Introduction

Thank you for purchasing Advantek Networks AWR-854G Wireless 11g/b Broadband Router. This Wireless Broadband Router is IEEE802.11g and IEEE802.11b standard compliant, it is a high quality and reliable Internet routing and security device which enables multiple users to share the Broadband Internet connection with or without wires through a Cable or DSL modem. Simply install the router, connect to Cable/DSL modem, and surf Internet without extra efforts. It can be used as a 10/100Mbps 4-port Ethernet switch as well as the router. With all of the 10/100Mbps ports supporting MDI/MDIX, it can allow you to use CAT5 cable to uplink to other routers/switches.

The AWR-854G Wireless 11g/b Broadband Router is featured with advanced security technology, supporting WEP, WPA-PSK, WPA (Wi-Fi Protected Access) TKIP/AES and RADIUS. With the supporting security protocols in this router, your network is armed with the highest levels of protection. The Router is ideal for the Small and Medium-sized Business (SMB) and the Small Office/Home Office (SOHO) use, providing an instant network connection and the flexibility to handle expansion for speedy LAN and WAN connections.



1.1 Features

Internet Access Features

- Shared Internet Access: All users on the LAN or WLAN can access the Internet through the Wireless Router, using only a single external IP address. The local (invalid) IP addresses are hidden from external sources. This process is called NAT (Network Address Translation).
- DSL and cable modem Support: The Wireless Router has a 10/100BaseT Ethernet WAN port for connecting a DSL or cable modem. All popular DSL and cable modems are supported.
- PPPoE and PPTP Support: The Internet (WAN port) connection supports PPPoE (PPP over Ethernet) and PPTP (Point-to-Point Tunneling Protocol), as well as "Direct Connection" type services.
- Fixed or Dynamic IP Address: On the Internet (WAN port) connection, the Wireless Router supports both Dynamic IP address (IP address is allocated on connection) and Fixed IP address.

Advanced Internet Functions

- Conferencing & Telephony Applications: Internet Telephony and Conferencing applications are supported.
- DMZ: One PC on your local LAN can be configured to allow unrestricted 2-way communication with Servers or individual users on the Internet.
- URL Filter: Use the URL Filter to block access to undesirable Web sites by LAN users, or Wireless LAN users.
- Internet Access Log: This feature is used to verify which Internet connections have been made.

Wireless Features

- Compliant with IEEE 802.11g standard.
- Up to 54Mbps data transfer rates (wireless)
- Backward compatible with IEEE802.11b (at 11Mbps)
- WEP Support: Support 64/128 bit WEP (Wired Equivalent Privacy) encryption.
- WPA Support: Support WPA-PSK Pass Phrase, WPA G-Rekey and WPA TKIP/AES Data Encryption.
- Access Control: This feature ensures that only access Wireless Stations that can access your LAN.

- Simple Configuration: All default settings can be changed easily.

LAN Features

- 4-Port Ethernet switch : The Wireless Router provides 4 10/100BaseT switching ports
- DHCP Server Support: This feature provides a dynamic IP address to PCs and other devices upon request. The Wireless Router can act as a DHCP Server for devices on your local LAN and WLAN.
- Multi Segment LAN Support: This feature is enabled through Wireless Router's RIP (Routing Information Protocol) and build-in static routing table.

Configuration and Management

- Easy Setup: Users allow to configure Wireless Router from anywhere on the LAN or WLAN via WEB browser.
- Remote Management: The Wireless Router can be managed from any PC on the LAN.
- UPnP Support: Universal Plug and Play feature. UPnP is supported by Windows ME or later.

Security Features

- Password Protected Configuration: Optional password protection is provided to prevent unauthorized users from modifying the configuration data and settings.
- Wireless LAN Security: Supports 64/128 bit WEP Encryption, WPA-PSK, WPA TKIP/AES, RADIUS Server.
- NAT Protection: This feature allows all LAN users to share a single IP address and all users' IPs are hidden. From the external viewpoint, there is no network only Wireless Router exists.
- Firewall: All incoming data packets are monitored and all incoming server requests are filtered.

1.2 Package Contents

- One Wireless 11g Broadband Router
- One 7.5V DC Power Adapter
- One CD including user's manual
- One RJ-45 Ethernet Cable

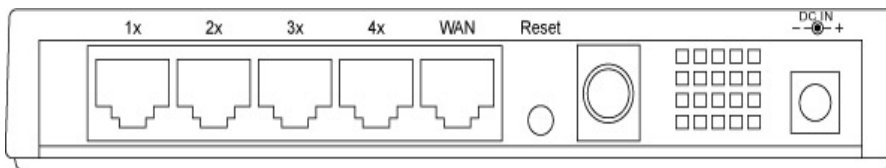
1.3 LEDs Indication & Connectors of Wireless Router

Front Panel LEDs Indication



LED	Light Status	Description
PWR	On	Wireless Router is powered on.
	Off	No power.
Status	On	Wireless Router is hung.
	Flashing	Wireless Router is up and ready.
LAN (1, 2, 3, 4)	On	LAN port is successfully connected.
	Flashing	Data is being sent or received.
WAN	On	WAN port is successfully connected
	Flashing	Data is being sent or received.
ACT (WLAN)	Flashing	Data is being sent or received.
LINK (WLAN)	On	Wireless connection is ready.

Back Panel Connectors



Button/port	Description
Reset	Reset configurations to default. Press the button and hold for 10 seconds.
LAN (1x, 2x, 3x, 4x)	Connect LAN systems with RJ-45 cable.
WAN	Connect DSL or Cable modem.
DC IN	Connect with DC Power Adapter.

1.4 System Requirements

- One or more PCs (desktop or notebook) with Ethernet interface.
- TCP/IP protocol must be installed on all PCs.
- Have valid Internet Access account and a DSL or cable modem.
- 10/100BaseT network cables with RJ-45 connectors.
- In case to use Wireless Access Point, all Wireless devices must be compliant with IEEE 802.11b/g.
- System with MS Internet Explorer ver. 5.0 or later, or Netscape Navigator ver. 4.7 or later.

1.5 Installation Instruction

- 1) Power off Wireless Router and DSL/cable modem.
- 2) Connect systems to the LAN ports on the Wireless Router with straight LAN cables.
- 3) Connect the DSL or cable modem to the WAN port on the Wireless Router.
- 4) Power on DSL or cable modem first, then connect power adapter to the power jack on the Wireless Router and plug the power cable into an outlet.
- 5) Check LEDs.
 - a) Once power on Wireless Router, Power LED should be on.
 - b) LAN LED should be on for each active LAN connection.
 - c) The WAN LED should be on when the DSL or cable modem is connected.

Warning: Only use the power adapter is provided from this package. use other power adapter may cause hardware damage

2 PC Configuration

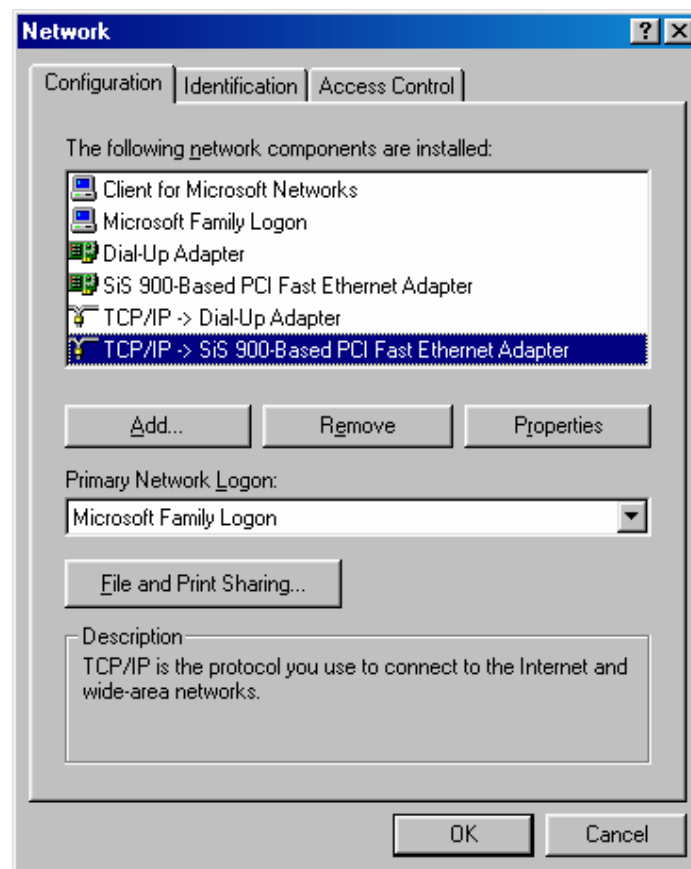
User needs to configure TCP/IP network settings, Internet access configuration and Wireless configuration for each system within Wireless Router's LAN network.

By default, Wireless Router acts as a DHCP server for server version of Windows, it automatically assigns IP address to each system when systems boot up. For all non-server version of Windows, the default TCP/IP setting acts as a DHCP client. If user chooses fixed IP addresses for client systems, the **Gateway** of the client system must be set to the IP address of the Wireless Router and **DNS** of the client system should be set to the address provided by your ISP.

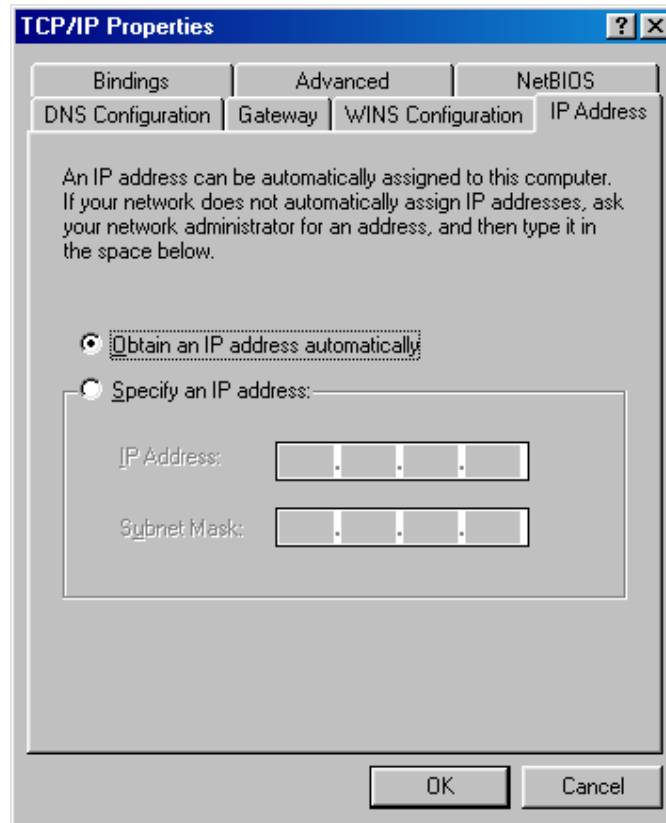
2.1 TCP/IP Networking Setup

Checking TCP/IP Settings for Windows 9x/Me

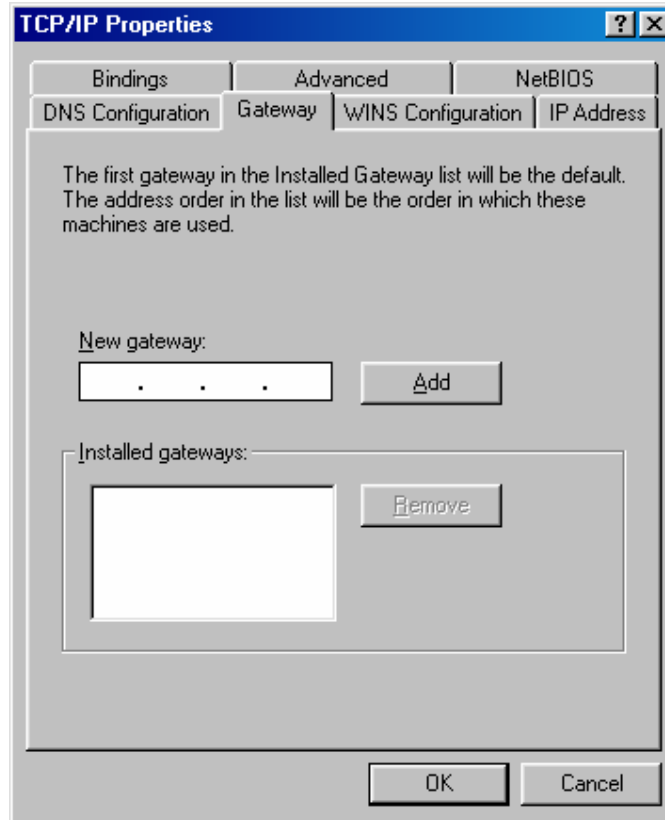
a) Select "Start → Control Panel → Network", the window below will appear:



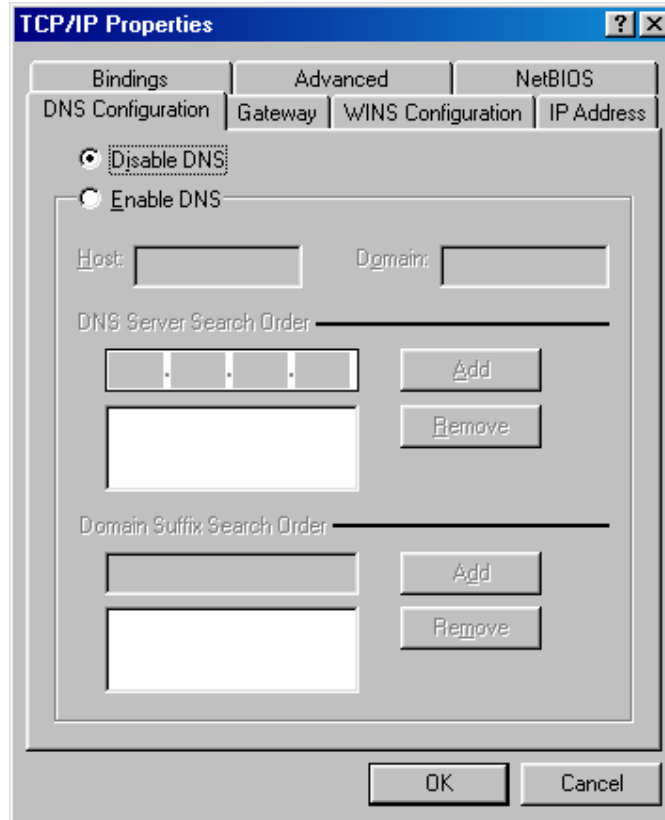
- b) Click "**Properties**", the window below will appear:



- If you decide to use DHCP, select "**Obtain an IP address automatically**", then click "OK" to confirm your settings. Once you restart your system, Wireless Router will obtain an IP address for this system.
 - If you decide to use fixed IP address for your system, select "**Specify an IP address**", and make sure that **IP Address** and **Subnet Mask** are correct.
- c) Select "**Gateway**" tab and enter correct gateway address in "**New gateway**" field, then click "**Add**":

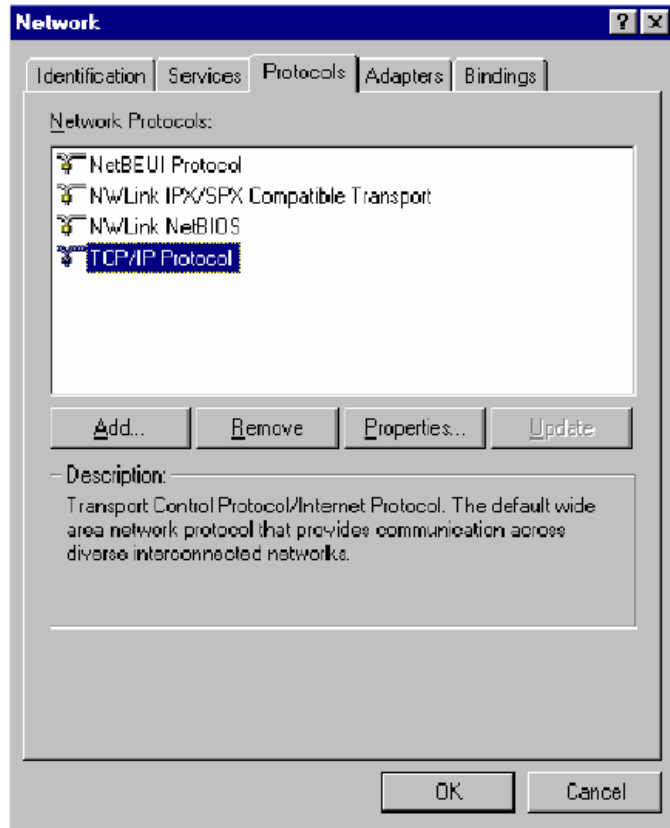


- d) Select **"DNS Configuration"** tab and make sure select **"Enable DNS"**, enter the DNS address provides from your ISP in the **"DNS Server Search Order"** field, then click **"Add"**:

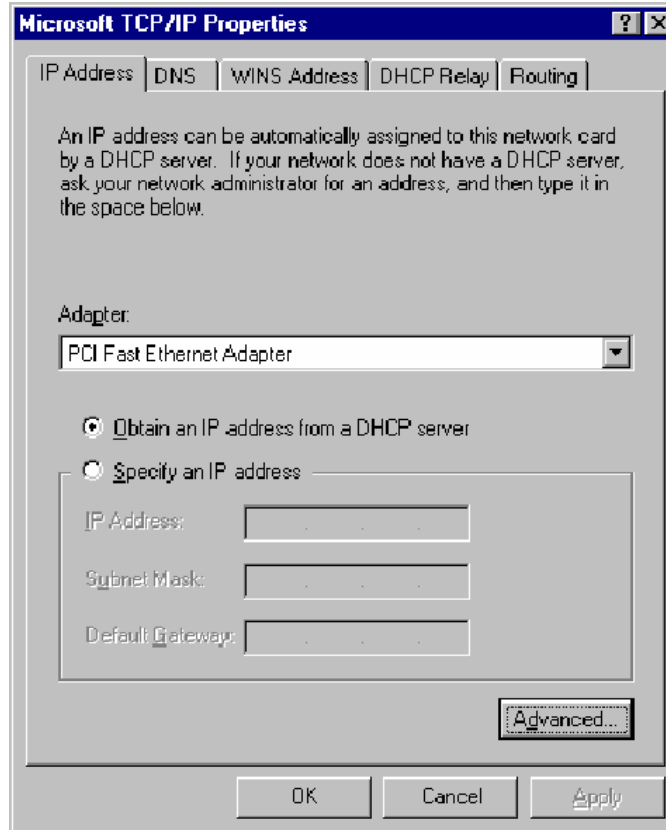


Checking TCI/IP Setting for Windows NT4.0

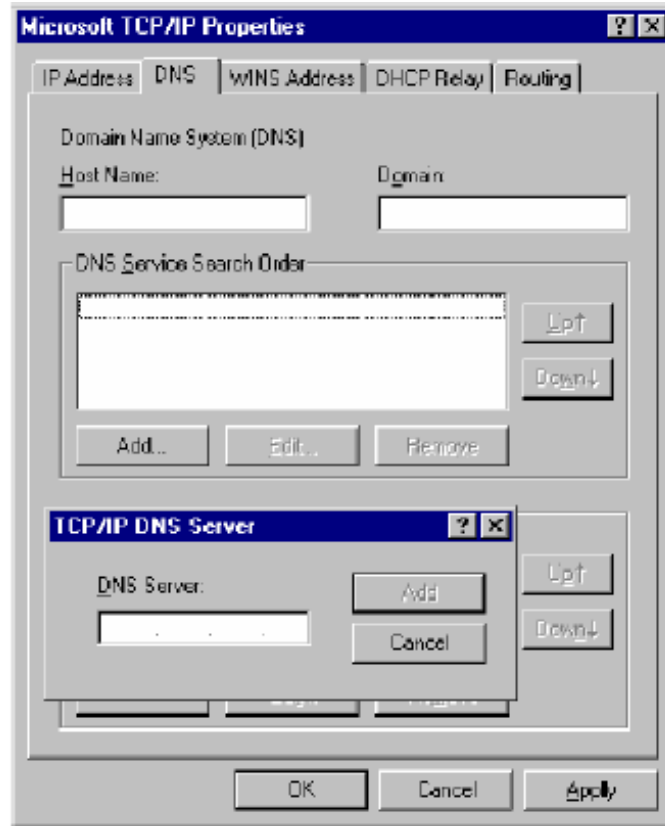
- a) Select "Control Panel → Network", click "Protocols" tab then select "TCP/IP protocol", window shown as below will appear:



- b) Click "**Properties**", window shown as below will appear.

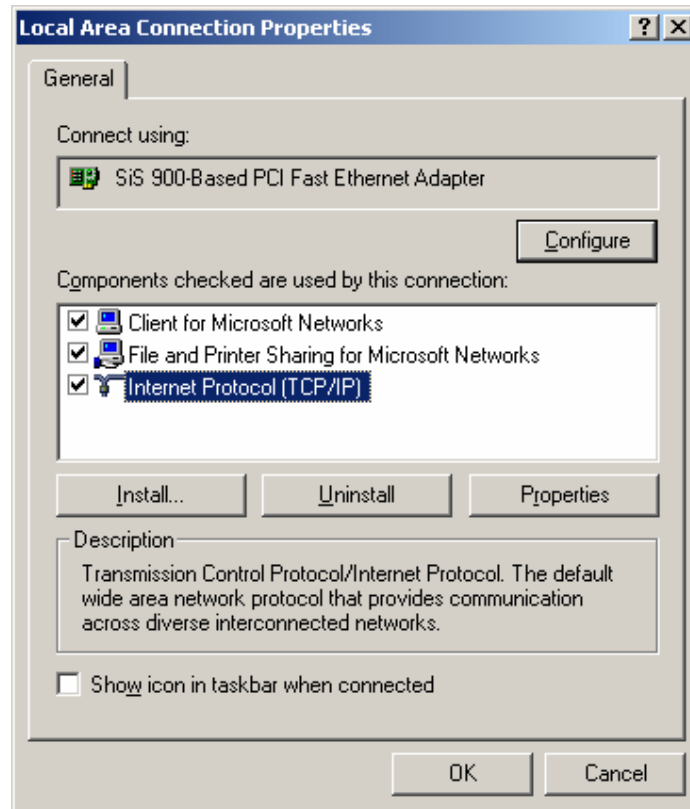


- Select the network card on your system from “**Adapter**” field.
 - If you decide to use IP address from Wireless Router, select “**Obtain an IP address from a DHCP server**”.
 - If you decide to use the IP address you are desired, select “**Specify an IP address**”. Make sure enter correct addresses in “**IP Address**” and “**Subnet Mask**” fields.
 - You must set Wireless Router’s IP address as “**Default Gateway**”.
- c) To enter DNS address is provided from your ISP. Select “**DNS**” tab, click “**Add**” under “**DNS Service Search Order**” list, then enter DNS Server IP address in “**TCP/IP DNS Server**” window and click “**Add**”.

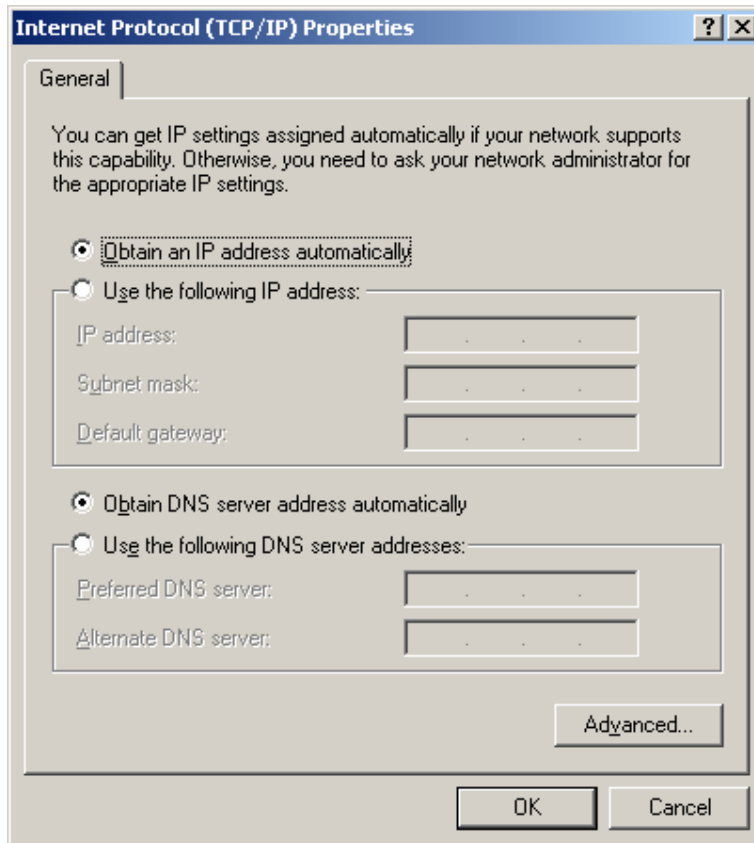


Checking TCP/IP Settings for Windows 2000

- a) Select **"Start → Control Panel → Network and Dial-up Connection"** and right click **"Local Area Connection"** then click **"Properties"**:



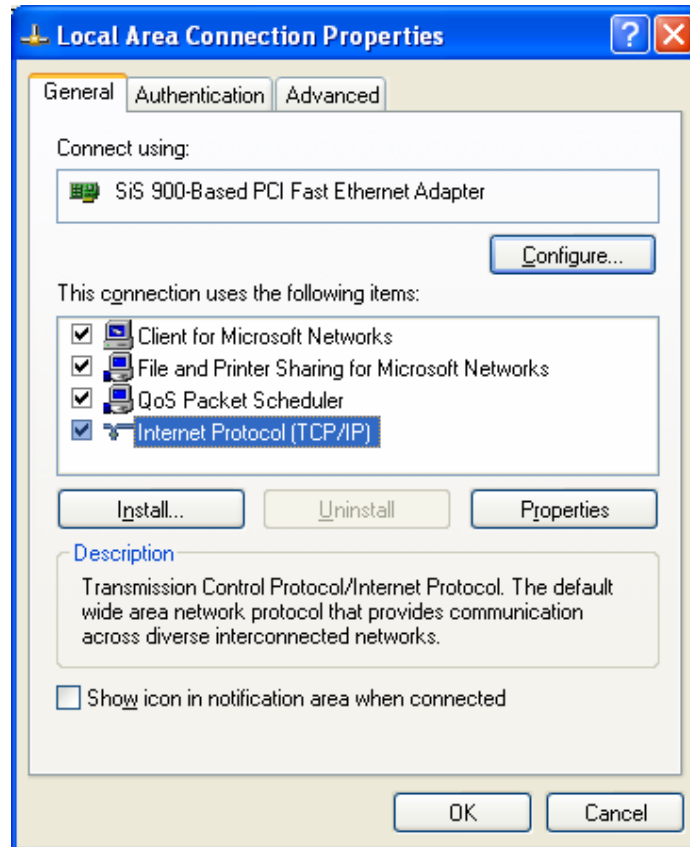
- b) Select the **“Internet Protocol (TCP/IP)”** for the network card on your system, then click **“Properties”**, window shown as below will appear.



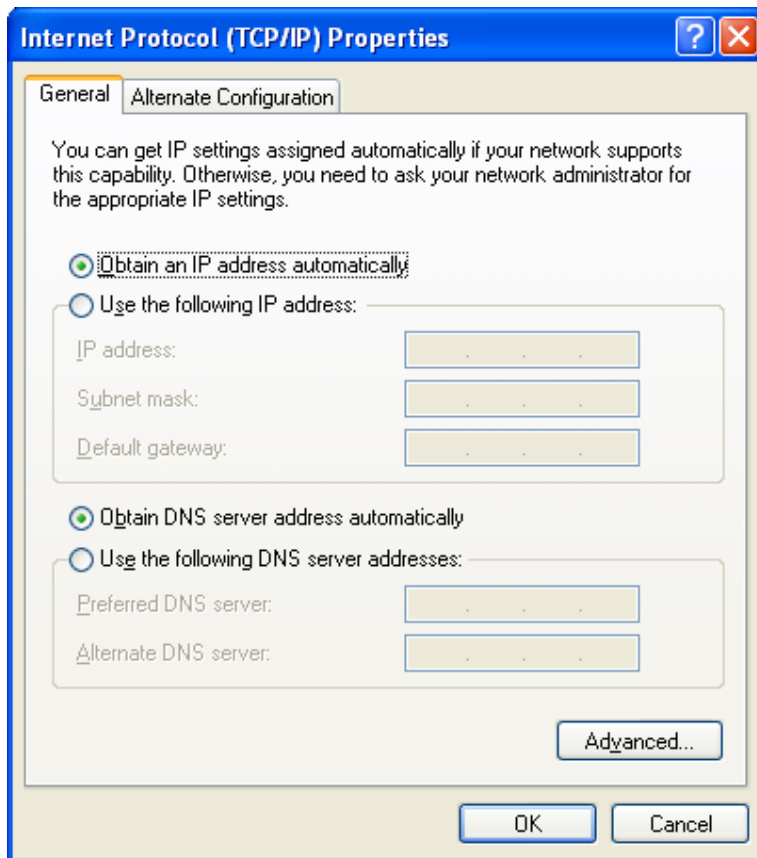
- If you decide to use IP address from Wireless Router, select **“Obtain an IP address automatically”**.
- If you decide to use the IP address you are desired, select **“Use the following IP address”**. Make sure enter correct addresses in **“IP Address”** and **“Subnet Mask”** fields.
- You must set Wireless Router’s IP address as **“Default Gateway”**.
- If the DNS Server fields are empty, select **“Use the following DNS server addresses”** and enter the DNS address is provided by your ISP, then click **“OK”**.

Checking TCP/IP Settings for Windows XP

- a) Click **“Start”**, select **“Control Panel → Network Connection”** and right click **“Local Area Connection”** then select **“Properties”**. The window shown as below will appear.



b) Select **"Internet Protocol (TCP/IP)"** then click **"Properties"**, window shown as below will appear.



- If you decide to use IP address from Wireless Router, select **“Obtain an IP address automatically”**.
- If you decide to use the IP address you are desired, select **“Use the following IP address”**. Make sure enter correct addresses in **“IP Address”** and **“Subnet Mask”** fields.
- You must set Wireless Router’s IP address as **“Default Gateway”**.
- If the DNS Server fields are empty, select **“Use the following DNS server addresses”** and enter the DNS address is provided by your ISP, then click **“OK”**.

2.2 Setting up Internet Access

This section describes how to setup Wireless Router Internet access through DSL or cable modem.

For Windows 9x/2000

- a) Click **“Start”** and select **“Settings → Control Panel → Internet Options”**.
- b) Select **“Connection”** tab then click **“Setup”** button.

- c) Select **"I want to set up my Internet connection manually, or I want to connect through a local area network (LAN)"** then click **"Next"**.
- d) Select **"I connect through a local area network (LAN)"** then click **"Next"**. Make sure all the boxes on the following LAN Internet Configuration screen are unchecked.
- e) Select **"No"** when **"Do you want to set up an Internet mail account now?"** prompts out.
- f) Click **"Finish"** to end setup process.

For Windows XP

- a) Click **"Start"** and select **"Control Panel → Network and Internet Connections."**
- b) Select **"Set up or Change your Internet Connection."**
- c) Click **"Connection"** tab, then click the **"Setup"** button. Click **"Cancel"** in the pop-up **"Location Information"** window.
- d) Click **"Next"** in the **"New Connection Wizard"** window.
- e) Select **"Connect to the Internet"** then click **"Next"**.
- f) Select **"Set up my connection manually"** then click **"Next"**.
- g) Select **"Connect using a broadband connection that is always on"** then click **"Next"**.
- h) Click **"Finish"** to complete the setup process.

For Macintosh Clients

To access Internet via wireless router on Macintosh system, the set up procedures are showing below:

- a) Open the TCP/IP Control Panel.
- b) Select **Ethernet** from the Connect via pop-up menu.
- c) Select **Using DHCP Server** from the Configure pop-up menu. The **DHCP Client ID** field can be left blank.
- d) Close the TCP/IP panel and save your new settings.

If you decide to assign IP addresses manually instead of DHCP, set the **Router Address** field with wireless router's IP address and make sure DNS settings are correct.

For Linux Clients

To access Internet via the wireless router, you need to set the wireless router as the **"Gateway"**. Make sure login as **"root"** before attempting any changes.

Fixed IP Address

Most Linux installations use fixed IP address, if you wish to use a fixed IP address, make sure make the following changes.

- a) Set "**Default Gateway**" with the IP address of the wireless router.
- b) Make sure DNS settings are correct.

To act as a DHCP Client (recommended)

The procedures below may vary depending on version of Linux and X-windows shell.

- a) Start X-Windows.
- b) Select **Control Panel** → **Network**.
- c) Select the "**Interface**" entry for your Network card. Normally, this is called "**eth0**".
- d) Click "**Edit**" button, set the "**protocol**" to "**DHCP**" and save.
- e) To apply all changes, use **Deactivate** and **Activate** buttons, if it is possible, restart your system.

2.3 Configure Wireless Station

This section describes how to configure all the wireless stations use Wireless Router as an Access Point. Each wireless station must have compatible settings as below.

Mode	All wireless stations must be set to "Infrastructure" mode.
SSID (ESSID)	This code must match the value uses for the Wireless Router. (Note: SSID code is case sensitive.)
WEP	By default, WEP encryption is set to 64-bits 10 hex digit.
WPA	By default, WPA-PSK Pass Phrase is set at PassPhrase, WPA G-Rekey Interval is set at 0 and WPA Data Encryption is at TKIP.

3. Setup Wireless Router Configurations via Web Browser

The Wireless Router comes with a web-based configuration utility. Users can access this configuration utility from any of client system within Wireless Router's LAN. For best results, either use Microsoft Internet Explorer 5.0 or later, or Netscape Navigator 4.7 or later.

Before you start configuring your Wireless Router, you have to get following information from your ISP:

- a) Has your ISP assigned you a static IP address, or they will assign one to you dynamically? If you have received a static IP address, what is it?
- b) Does your ISP use PPPoE? If so, what is your PPPoE username and password?

If you are not sure of above questions, please contact your ISP.

3.1 Start your Web Browser

To use the Web-Based Utility, you have to launch your Internet Browser (MS IE 5.0 or later, Netscape Navigator 4.7 or later).

Step1: Enter Wireless Router default IP address <http://192.168.10.1> in the Address field then hit Enter key:



Step2: Login dialog box will appear, enter **admin** as User Name and default password is **1234**, then click "OK" to login web-based utility.

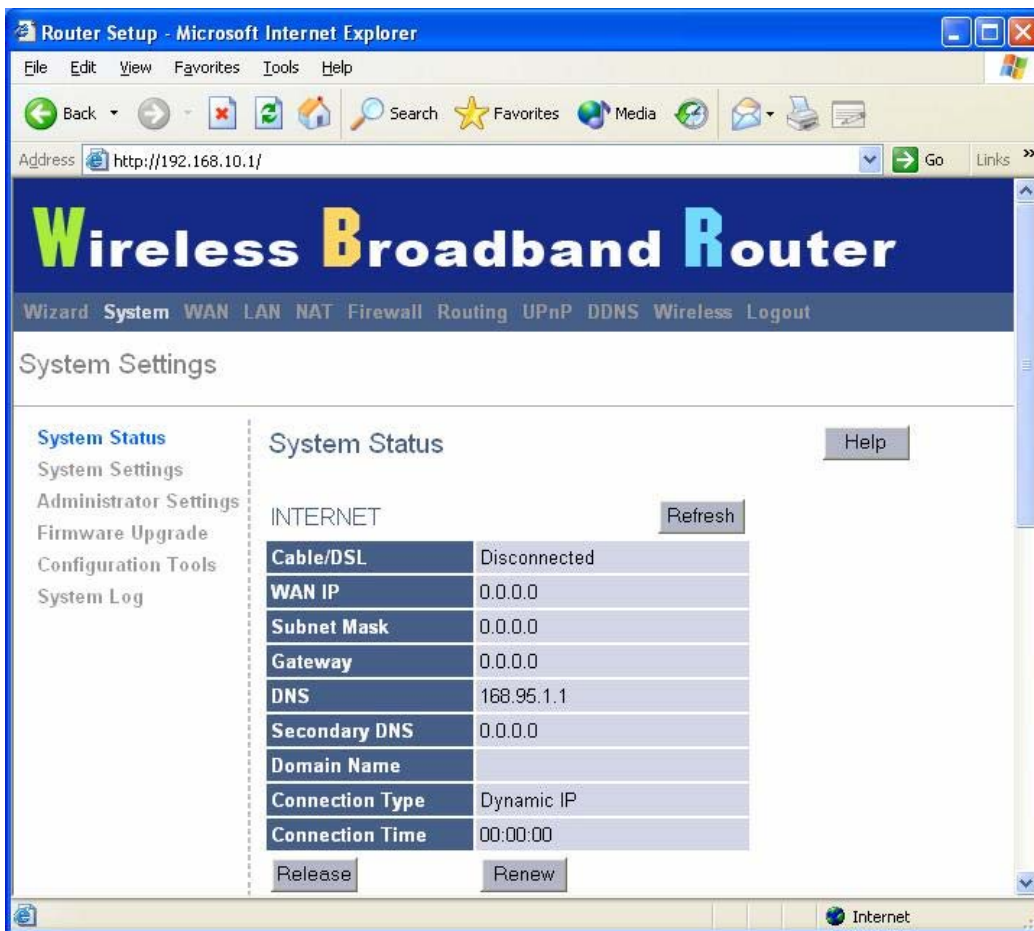


3.2 System

This section displays the basic configuration parameters of your Wireless Router, such as System Status, System Settings, Administrator Settings, Firmware Upgrade, Configuration Tools and System Log. Although most users will be able to accept the default settings, but every ISP is different. Please check with your ISP if you are not sure which settings ISP requires.

System Status

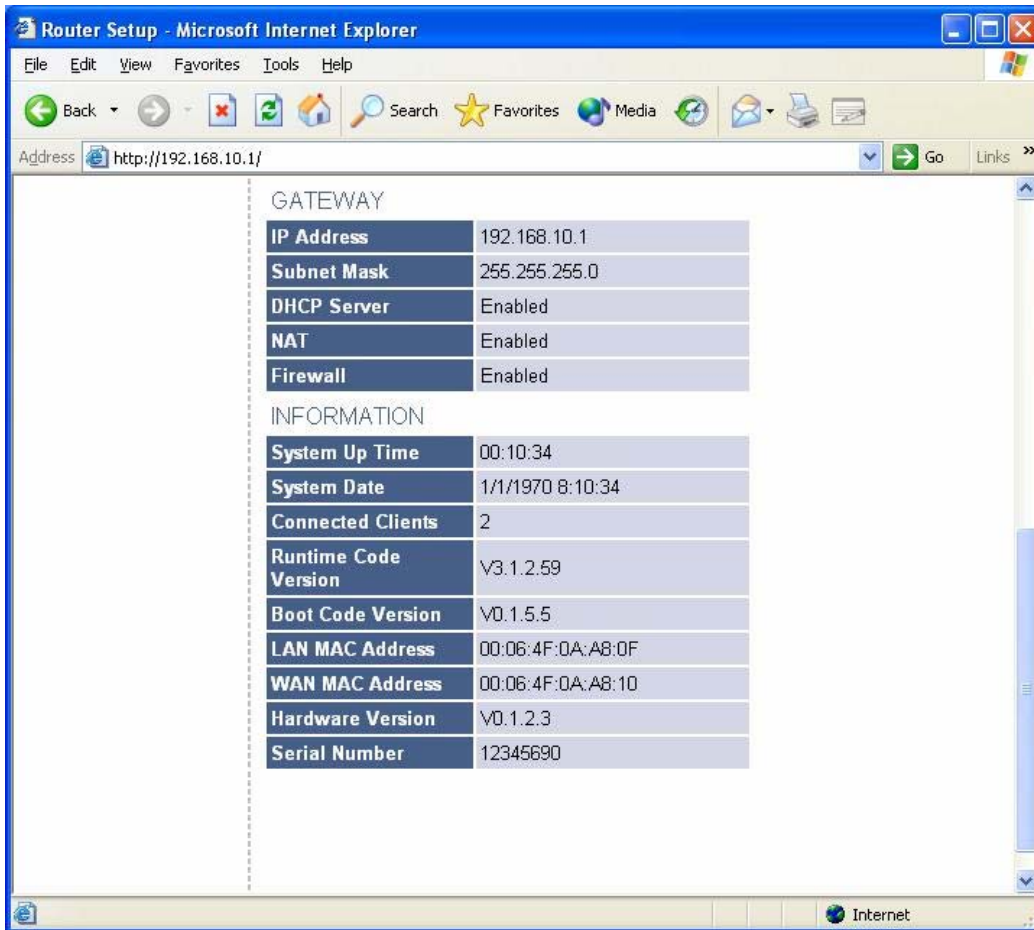
You can use the Status screen to see the connection status for the Wireless Broadband Router' WAN/LAN interfaces, firmware and hardware version numbers, and the number of connected clients to your network.



The screenshot shows the 'System Status' page of a Wireless Broadband Router. The browser window title is 'Router Setup - Microsoft Internet Explorer' and the address bar shows 'http://192.168.10.1/'. The page has a blue header with the text 'Wireless Broadband Router' and a navigation menu with options: Wizard, System, WAN, LAN, NAT, Firewall, Routing, UPnP, DDNS, Wireless, and Logout. The main content area is titled 'System Settings' and contains a sidebar with links to System Status, System Settings, Administrator Settings, Firmware Upgrade, Configuration Tools, and System Log. The 'System Status' section is active and displays a table of network parameters for the 'INTERNET' connection. A 'Refresh' button is located to the right of the table header. At the bottom of the table are 'Release' and 'Renew' buttons. A 'Help' button is also visible in the top right of the status section.

INTERNET		Refresh
Cable/DSL	Disconnected	
WAN IP	0.0.0.0	
Subnet Mask	0.0.0.0	
Gateway	0.0.0.0	
DNS	168.95.1.1	
Secondary DNS	0.0.0.0	
Domain Name		
Connection Type	Dynamic IP	
Connection Time	00:00:00	

Release Renew



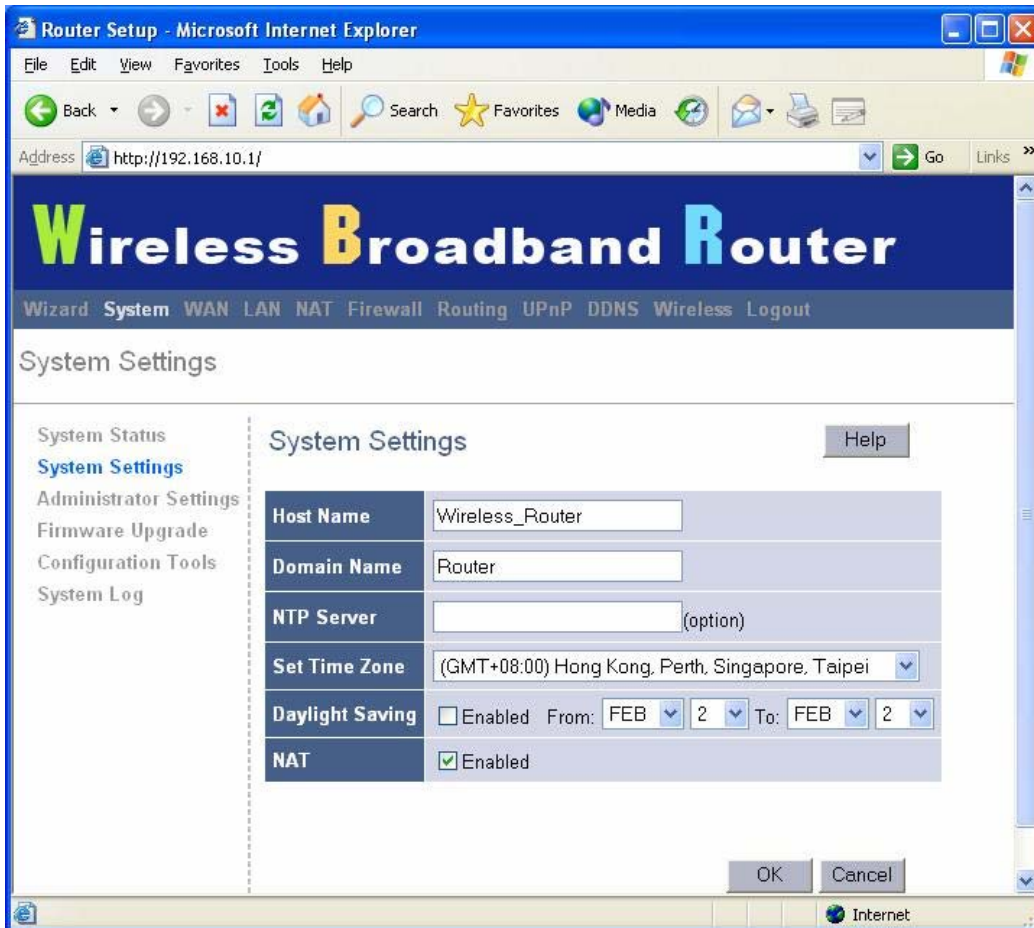
INTERNET: Displays WAN connection type and status.

GATEWAY: Displays system IP settings, as well as DHCP, NAT and Firewall status.

INFORMATION: Displays the number of connected clients, as well as the Wireless Broadband Router's hardware and firmware version numbers.

System Settings

The System Settings window configures wireless broadband router basic settings, such as router's Host Name, Domain Name, Set Time Zone, Daylight Saving and NAT.



Host Name: Enter a hostname if it was provided by the ISP (Default: Wireless_Router).

Domain Name: Enter a Domain Name if it was provided by the ISP (Default: Router).

NTP Server(option): Enter a NTP Server IP Address.

Set Time Zone: Select the time zone of the country you are currently in. The router will set its time based on your selection.

Daylight Saving: The router can also take Daylight savings into account. If you wish to use this function, you must check/tick the enable box to enable your daylight saving configuration.

NAT: You can select to enable NAT function.

Administrator Settings

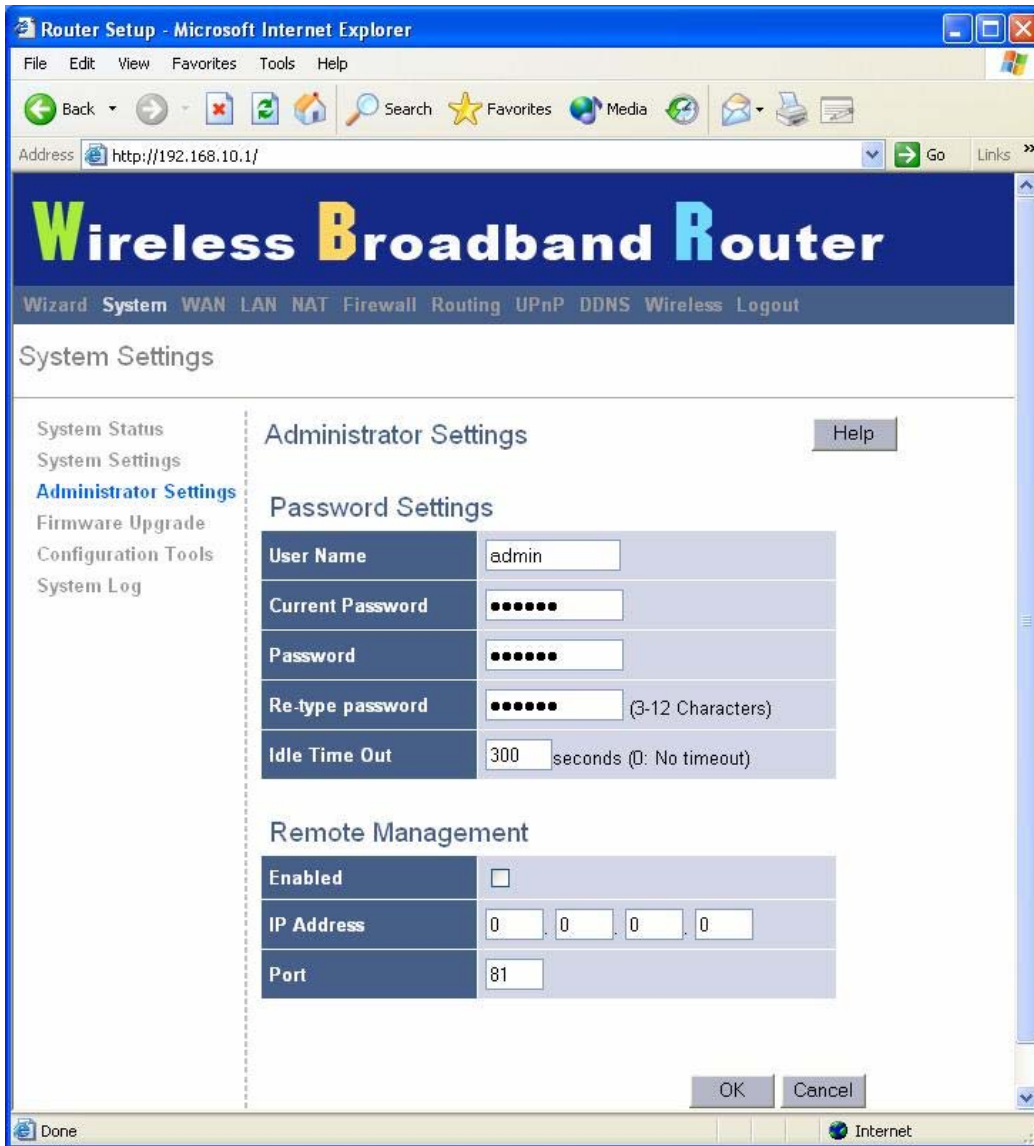
Use this menu to restrict management access based on a specific password. By default, there is no password. So please assign a password to the Administrator as soon as possible, and store it in a safe place.

Passwords can contain from 3-12 alphanumeric characters, and are case sensitive.

Administrator Time-out - The amount of time of inactivity before the Wireless Broadband Router will automatically close the Administrator session. Set this to zero to disable it.

Remote Management - By default, management access is only available to users on your

local network. However, you can also manage the Wireless Broadband Router from a remote host by adding the IP address of an administrator to this screen.

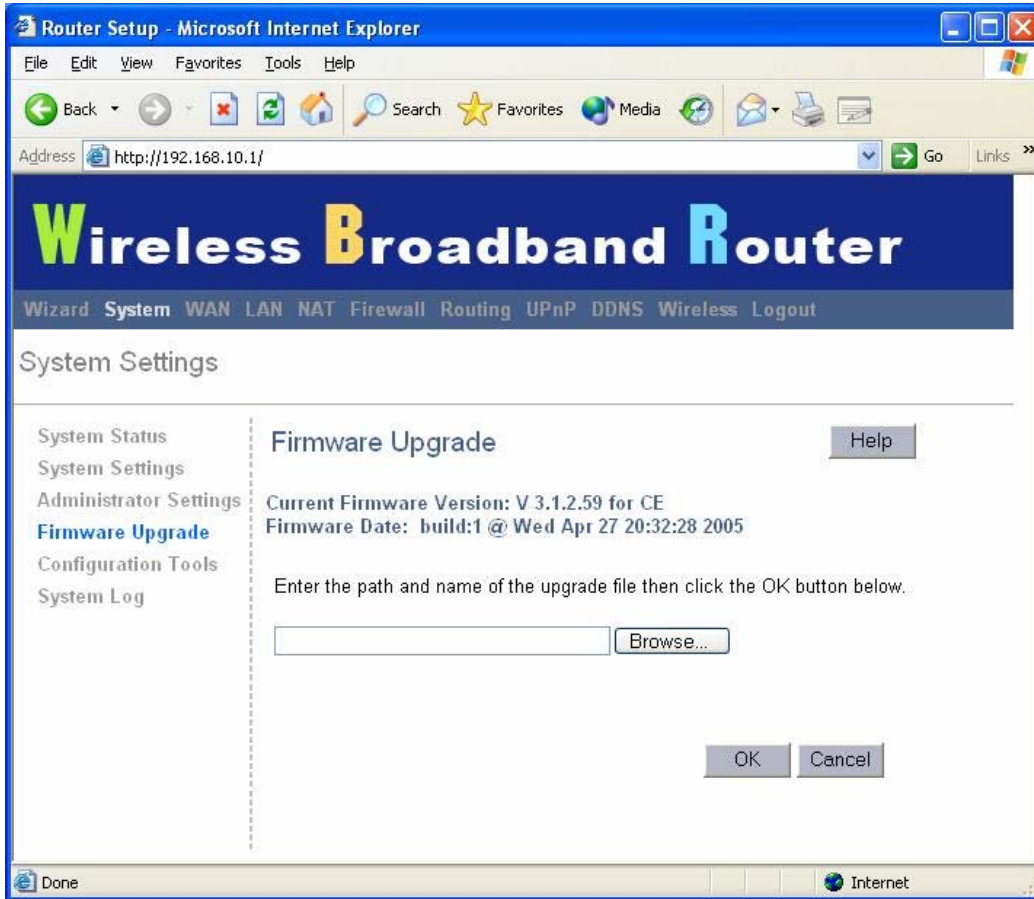


Password Settings: Allows you to select a password in order to access the web-based management website.

Remote Management: You can specify a Host IP address that can perform remote management functions.

Firmware Upgrade

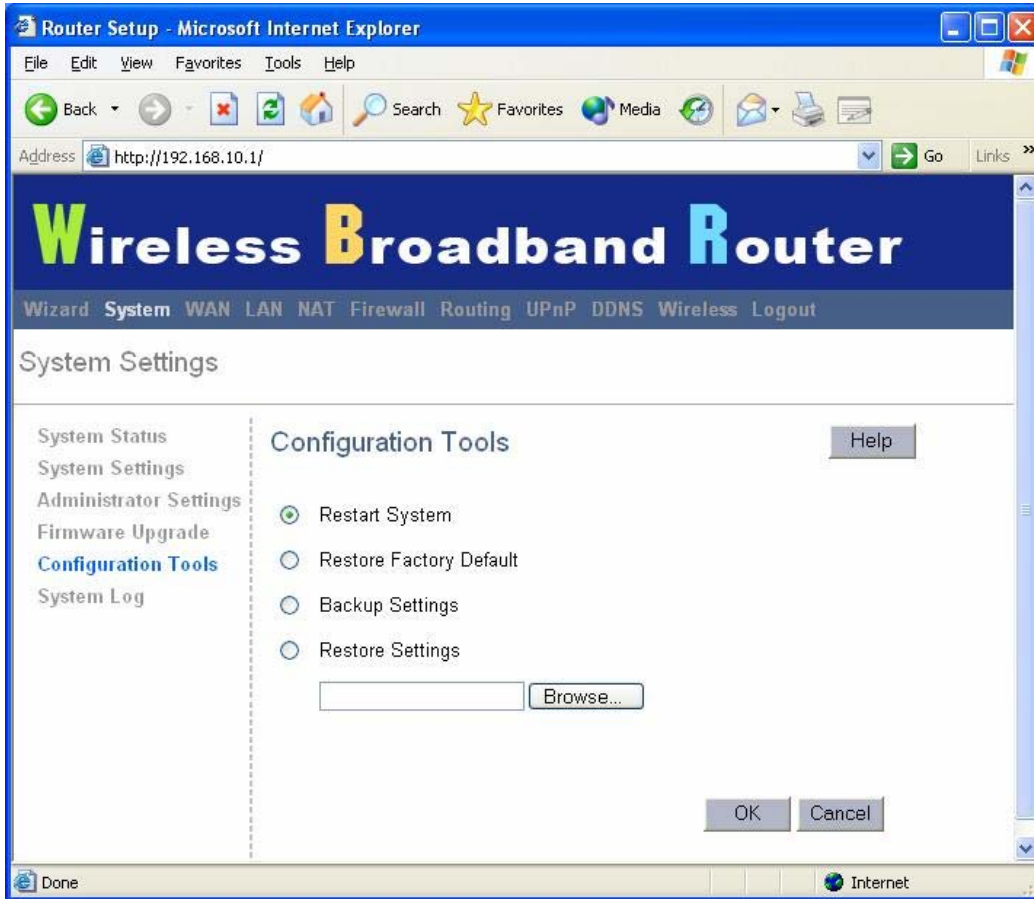
User uses the Firmware Upgrade window to locate the new firmware then upgrade the system firmware. Click **Browse** to search for the new firmware location, then click **OK** to proceed the upgrade.



Firmware Upgrade: This tool allows you to upgrade the Broadband router's system firmware. To upgrade the firmware of your Broadband router, you need to download the firmware file to your local hard disk, and enter that file name and path in the appropriate field on this page. You can also use the Browse button to find the firmware file on your PC.

Configuration Tools

Use this window to restore or backup wireless broadband router settings, such as Restart System, Restore Factory Defaults, Backup Settings and Restore Settings.



Restart System: Reset Wireless Broadband Router, Reboot this device.

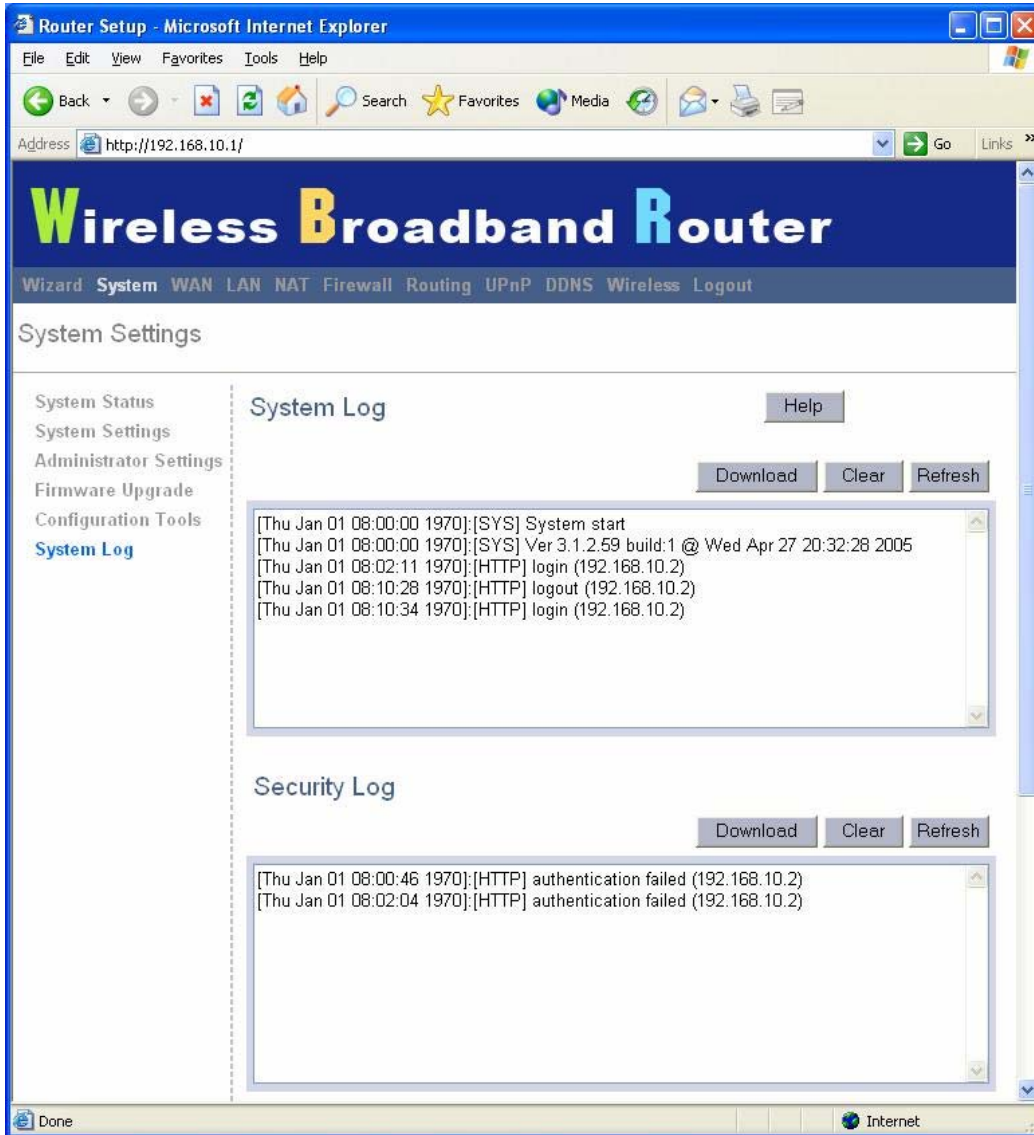
Restore Factory Defaults: Reset the settings of this device to the factory default values.

Backup Settings: Save the settings of this device to a file.

Restore Settings: Restore the settings of this device to the backup settings.

System Log

The System Log window displays wireless broadband router's system activities, such as System Log and Security Log.



System Log: Wireless broadband router's system activity.

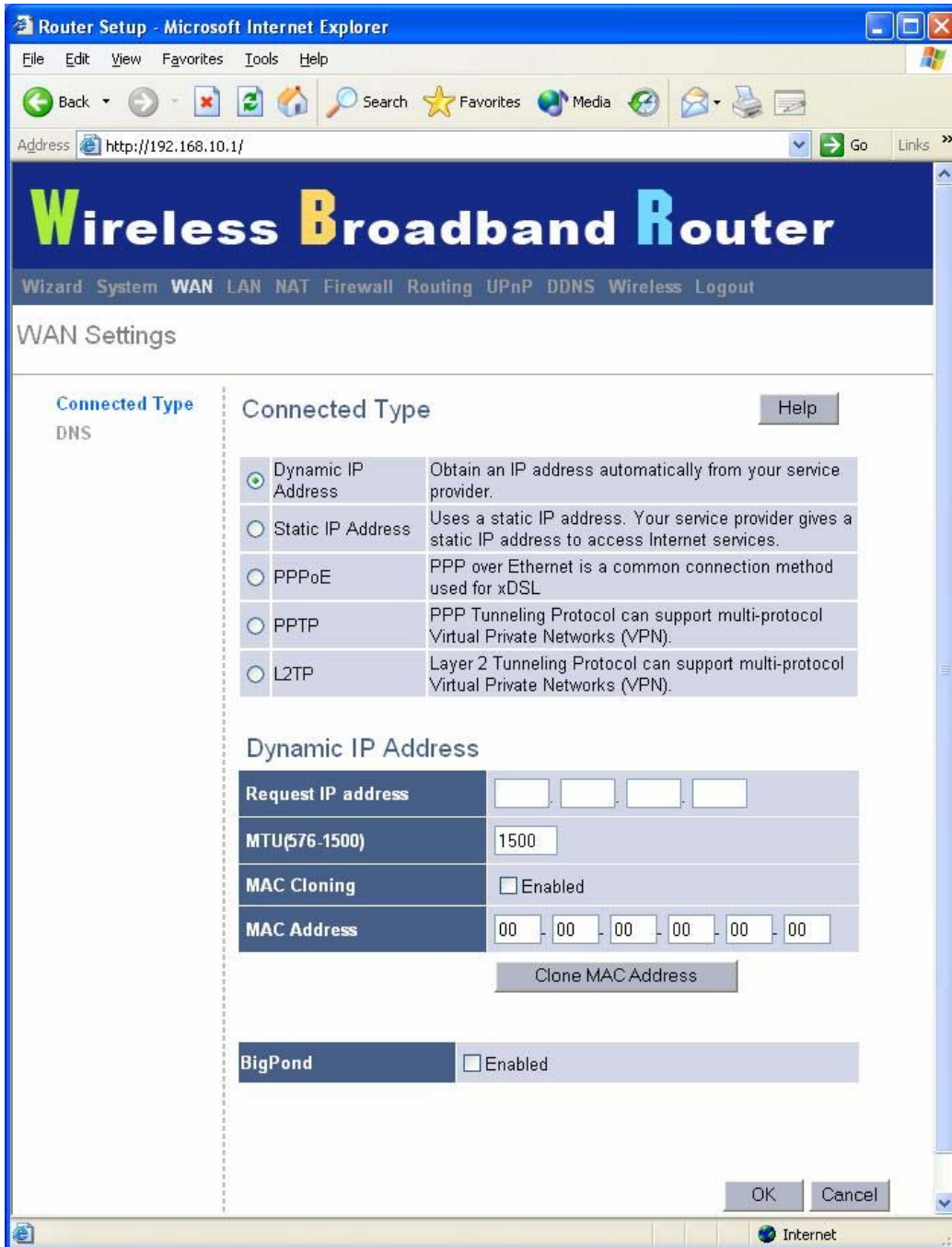
Security Log: Displays any illegal attempts to access your network.

3.3 WAN

Connected Type

Specify the WAN connection type required by your Internet Service Provider, then click "OK Button" to provide detailed configuration parameters for the selected connection type.

Note: Please disable your Firewall when viewing the WAN page – some Firewall applications might block this page



Dynamic IP address: Your ISP will automatically give you an IP address

Static IP address: Your ISP has given you an IP address already

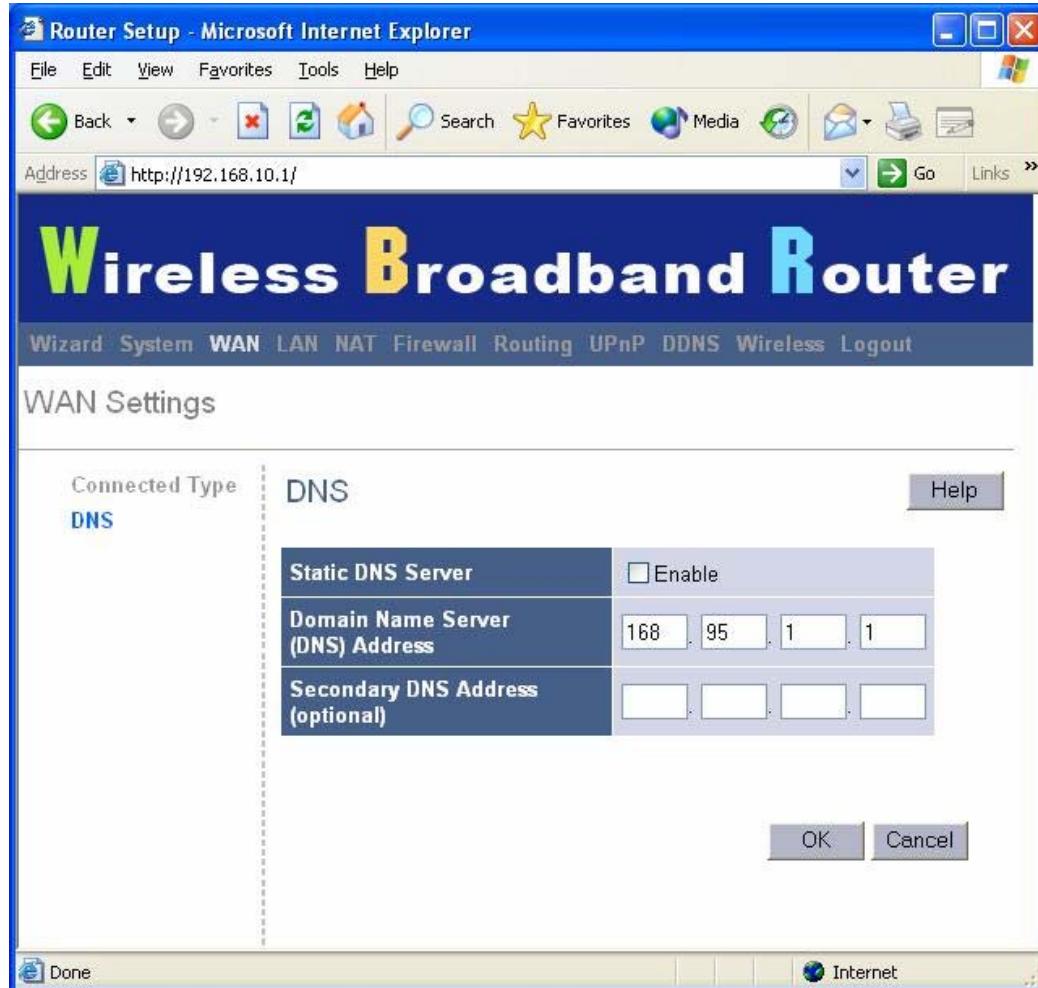
PPPoE: Your ISP requires PPPoE connection.

PPTP: Your ISP requires you to use a Point-to-Point Tunneling Protocol (PPTP) connection.

L2TP: Your ISP requires L2TP connection.

DNS

Domain Name Servers are used to map an IP address to the equivalent domain name (e.g. www.waveplus.com). Your ISP should provide the IP address for one or more domain name servers.



Static DNS Server: You can enable or disable the Static DNS Server.

Domain Name Server (DNS) Address: This is the ISP's DNS server IP address that they gave you; or you can specify your own preferred DNS server IP address

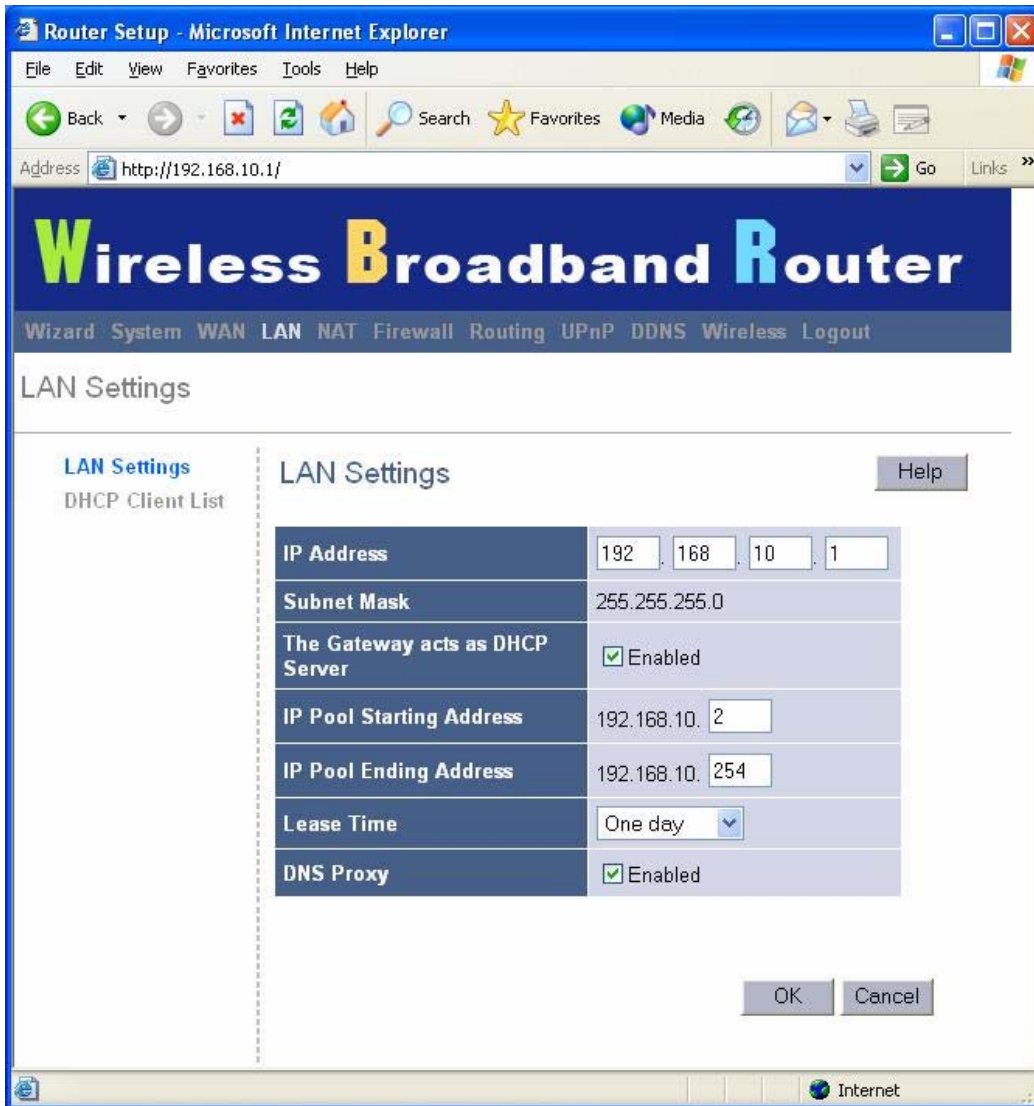
Secondary DNS Address (optional): This is optional. You can enter another DNS server's IP address as a backup. The secondary DNS will be used should the above DNS fail.

3.4 LAN

LAN Settings

Configure the gateway address of the Wireless Broadband Router. To dynamically assign the IP address for client PCs, enable the DHCP Server, set the lease time, and then specify the address range.

Valid IP addresses consist of four numbers, and are separated by periods. The first three fields are the network portion, and can be from 0-255, while the last field is the host portion and can be from 1-254.



IP address: This is the router's LAN port IP address (Your LAN clients default gateway IP address)

Subnet Mask: Specify a Subnet Mask for your LAN segment.

The Gateway acts as DHCP Server: You can enable or disable the DHCP server.

IP Pool Starting Address: Enter the first address that should be assigned by the DHCP server.

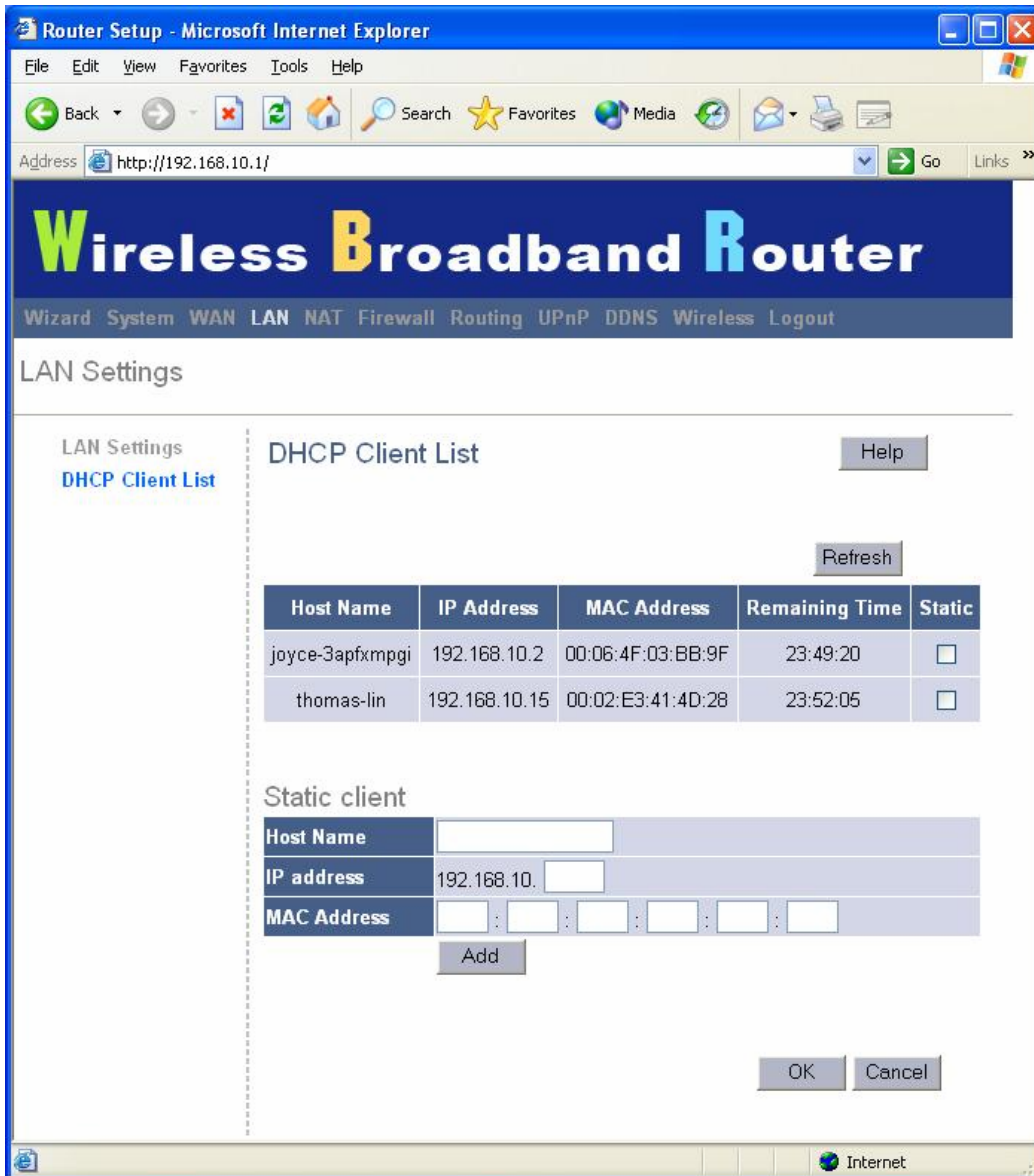
IP Pool Ending Address: Enter the last address that should be assigned by the DHCP server.

Lease Time: Enter the number of hours that a client can use the assigned IP address.

DNS Proxy: To enable or disable DNS Proxy (Domain Name Service).

DHCP Client List

The DHCP client list allows you to see which clients are connected to the Wireless Broadband Router via IP address, host name, and MAC address.



The screenshot shows the 'Router Setup - Microsoft Internet Explorer' window. The address bar displays 'http://192.168.10.1/'. The page title is 'Wireless Broadband Router'. Below the title is a navigation menu: 'Wizard System WAN LAN NAT Firewall Routing UPnP DDNS Wireless Logout'. The main content area is titled 'LAN Settings' and contains a sidebar with 'LAN Settings' and 'DHCP Client List' (selected). The 'DHCP Client List' section has a 'Help' button and a 'Refresh' button. Below these is a table with the following data:

Host Name	IP Address	MAC Address	Remaining Time	Static
joyce-3apfxmpgi	192.168.10.2	00:06:4F:03:BB:9F	23:49:20	<input type="checkbox"/>
thomas-lin	192.168.10.15	00:02:E3:41:4D:28	23:52:05	<input type="checkbox"/>

Below the table is the 'Static client' section with the following fields:

- Host Name:
- IP address: 192.168.10.
- MAC Address: : : : : :

Buttons for 'Add', 'OK', and 'Cancel' are present at the bottom of the configuration area.

DHCP Client List: This page shows all DHCP clients (LAN PCs) currently connected to your network. The “DHCP Client List” displays the **IP** address and the **MAC** address and Remaining Time of each LAN Client. Use the **Refresh** button to get the most updated situation

Static Client: You can select static to fixe it.

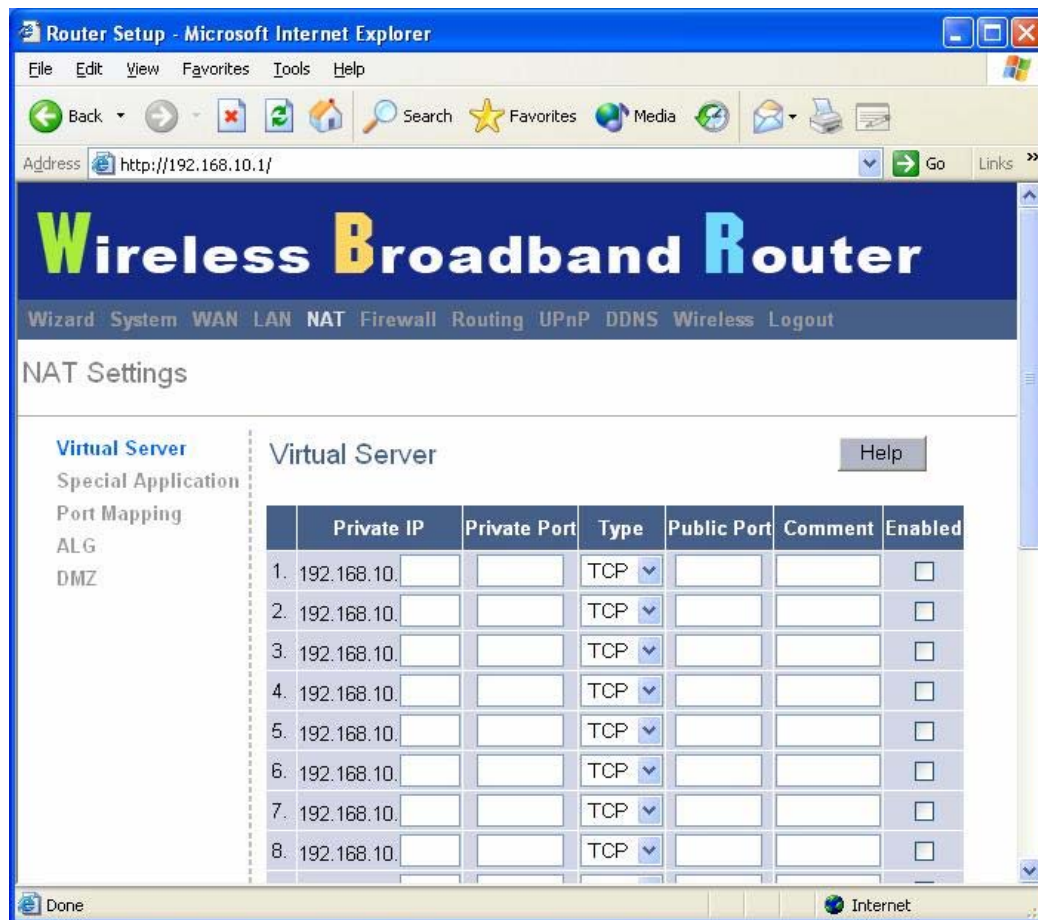
3.5 NAT

Virtual Server

If you configure the Wireless Broadband Router as a virtual server, remote users accessing services such as Web or FTP at your local site via public IP addresses can be automatically redirected to local servers configured with private IP address. In other words, depending on the requested service (TCP/UDP port number), the Wireless Broadband Router redirects the external service request to the appropriate server.

Example:

ID	Private IP	Private Port	Type	Public Port	Comment
1	192.168.2.20	80	TCP	200	Web Server
2	192.168.2.12	21	TCP	333	FTP Server
3	192.168.2.28	23	TCP	455	Telnet Server



Private IP: This is the LAN client/host IP address that the Public Port number packet will be sent to.

Private Port: This is the port number (of the above Private IP host) that the below Public Port

number will be changed to when the packet enters your LAN (to the LAN Server/Client IP)

Type: Select the port number protocol type (TCP, UDP or both). If you are unsure, then leave it to the default both protocol.

Public Port: Enter the service (service/Internet application) port number from the Internet that will be re-directed to the above Private IP address host in your LAN.

Comment: The description of this setting.

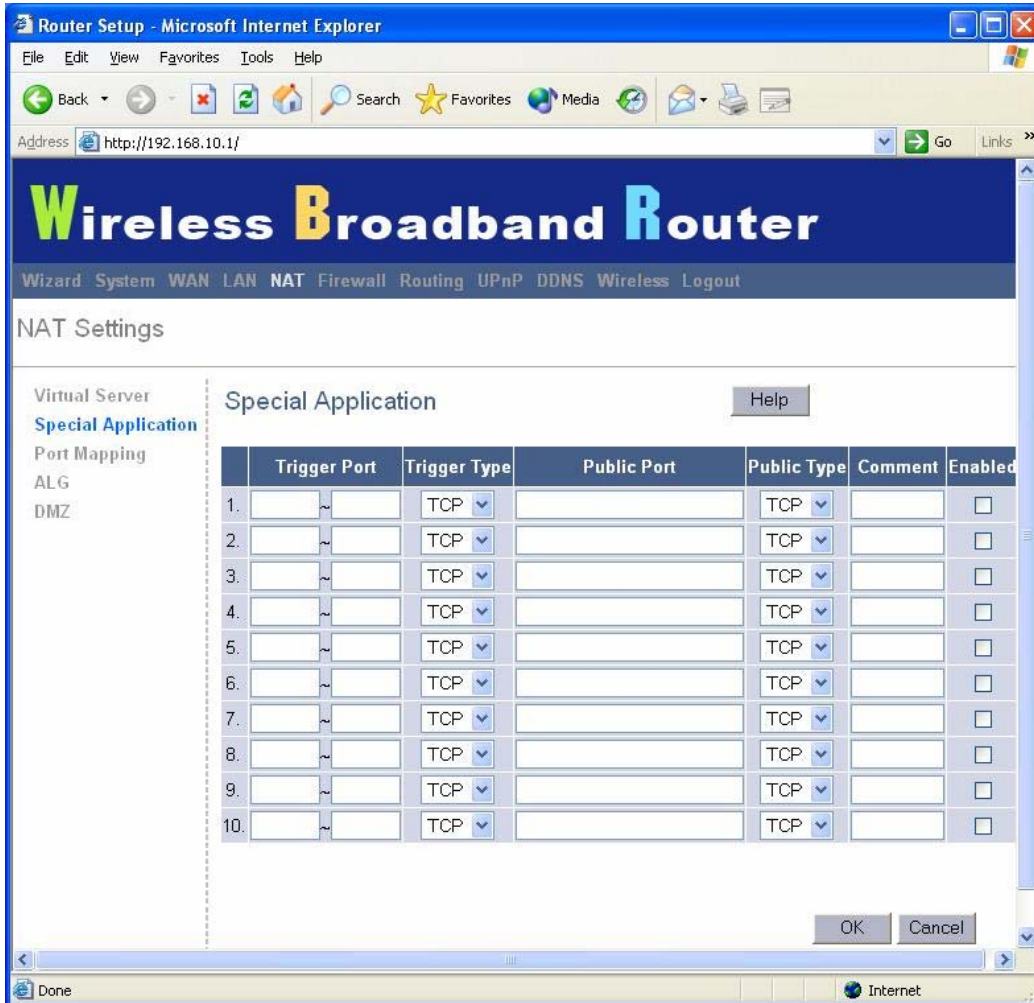
Enabled: Enable Virtual Server.

Special Application

Some applications require multiple connections, such as Internet gaming, video conferencing, Internet telephony and others. These applications cannot work when Network Address Translation (NAT) is enabled. If you need to run applications that require multiple connections, -specify the port normally associated with an application in the "Trigger Port" field, select the protocol type as TCP or UDP, then enter the public ports associated with the trigger port to open them for inbound traffic.

Example:

ID	Trigger Port	Trigger Type	Public Port	Public Type	Comment
1	28800	UDP	2300-2400, 47624	UDP	MSN Game Zone
2	28800	UDP	2300-2400, 47624	TCP	MSN Game Zone
3	6112	UDP	6112	UDP	Battle.net



Trigger Port: This is the out going (Outbound) range of port numbers for this particular application.

Trigger Type: Select whether the outbound port protocol is “TCP”, “UDP” or both.

Public Port: Enter the In-coming (Inbound) port or port range for this type of application (e.g. 2300-2400, 47624)

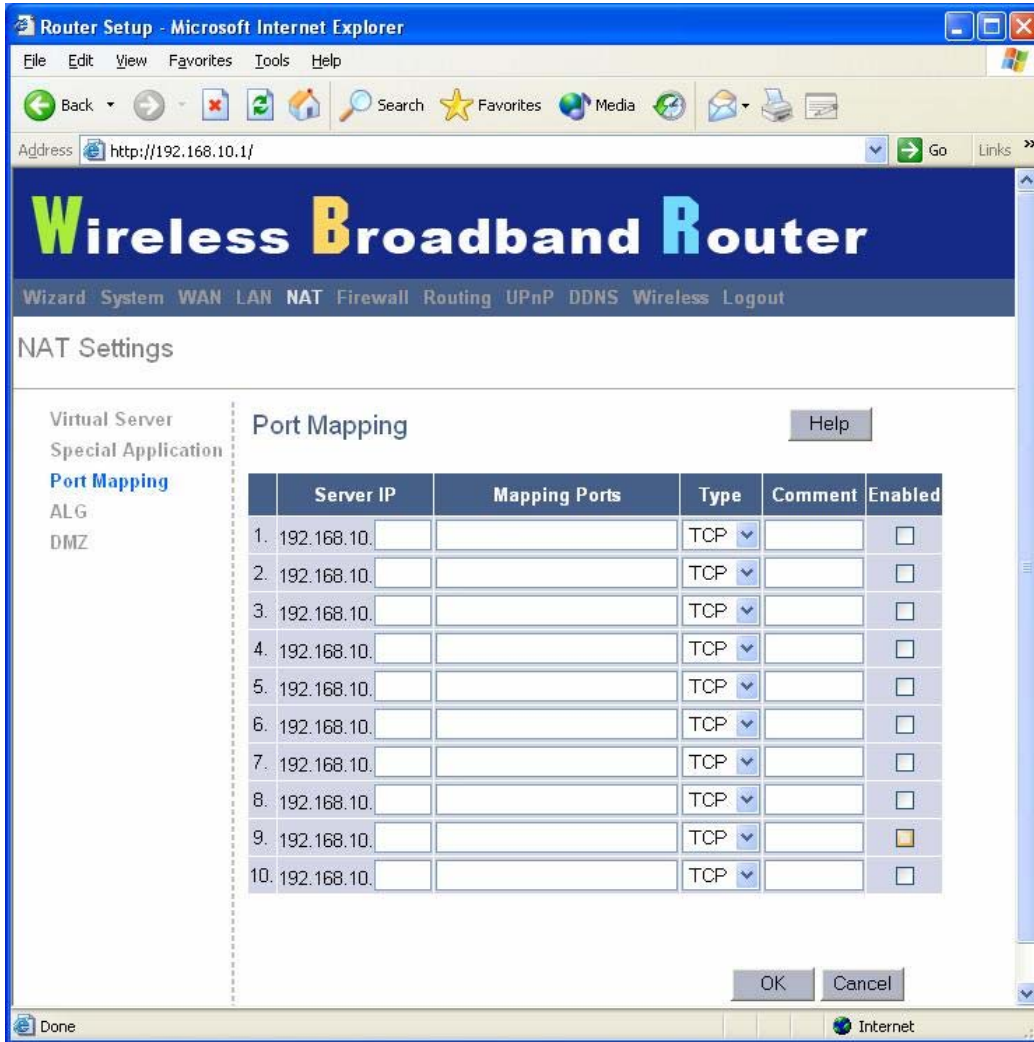
Public Type: Select the Inbound port protocol type: “TCP”, “UDP” or both.

Comment: The description of this setting.

Enable: Enable the Special Application function.

Port Mapping

This functionality allows one or more public IP addresses to be shared by multiple internal users. Enter the Public IP address you wish to share into the Global IP field. Enter a range of internal IP that will share the global IP.



Server IP: Enter the NAT server IP address.

Mapping Ports: Enter the port address NAT server maps to.

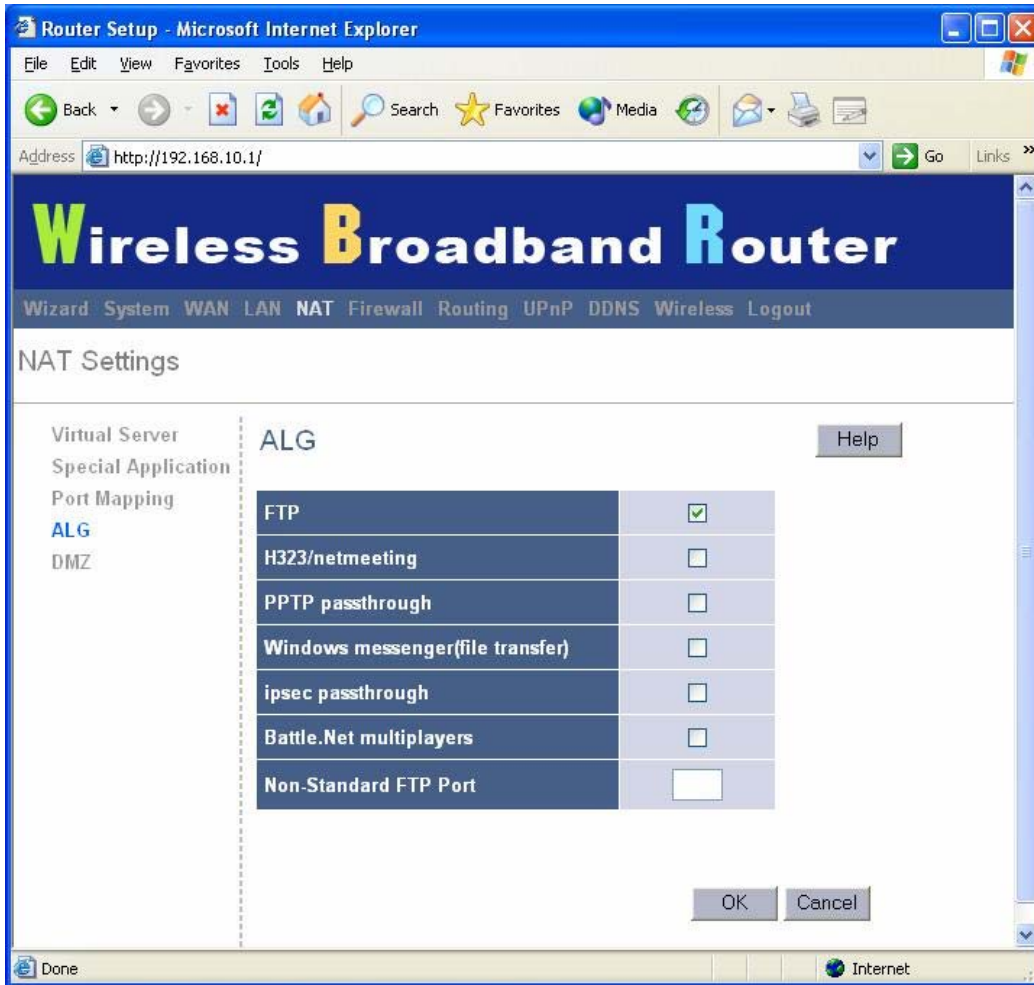
Type: Select the Inbound port protocol type: "TCP", "UDP" or both.

Comment: The description of this setting.

Enabled: Enable the Port Mapping function.

ALG (Application Level Gateway)

The ALG window allows user to configure ALG settings for the wireless broadband router.

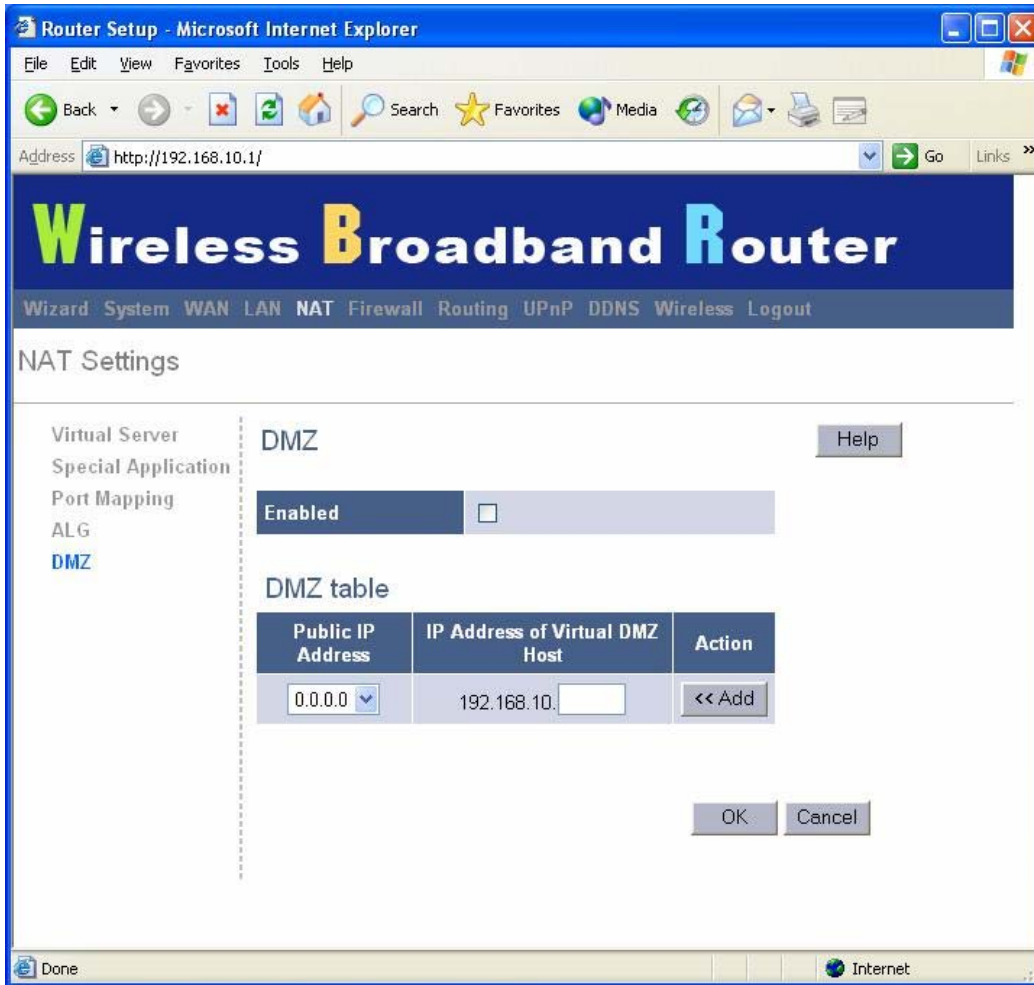


ALG (Application Layer Gateway): You can select to enable, then the router will let that application correctly pass through the NAT gateway.

DMZ (Demilitarized Zone)

If you have a client PC that cannot run Internet application properly from behind the NAT firewall or after configuring the Special Applications function, then you can open the client up to unrestricted two-way Internet access.

Enter the IP address of a DMZ host to this screen. Adding a client to the DMZ (Demilitarized Zone) may expose your local network to a variety of security risks, so only use this option as a last resort.



DMZ (Demilitarized Zone): Enable/disable DMZ.

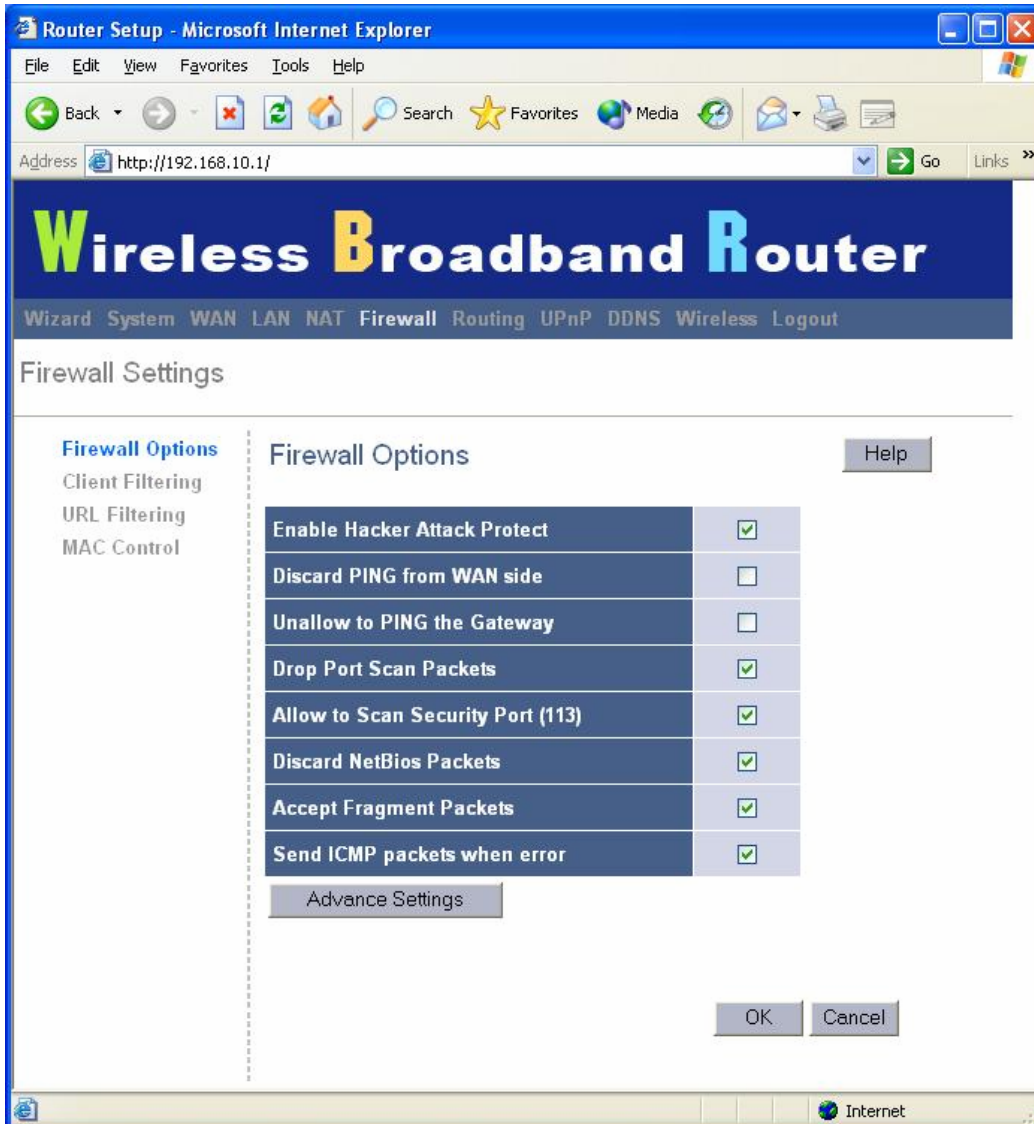
Public IP Address: The IP address of the WAN port or any other Public IP addresses given to you by your ISP.

IP Address of Virtual DMZ Host: Enter the DMZ host IP address.

3.6 Firewall

Firewall Options

The Wireless Broadband Router provides extensive firewall protection by restricting connection parameters to limit the risk of intrusion and defending against a wide array of common hacker attacks. However, for applications that require unrestricted access to the Internet, you can configure a specific client/server as a demilitarized zone (DMZ).

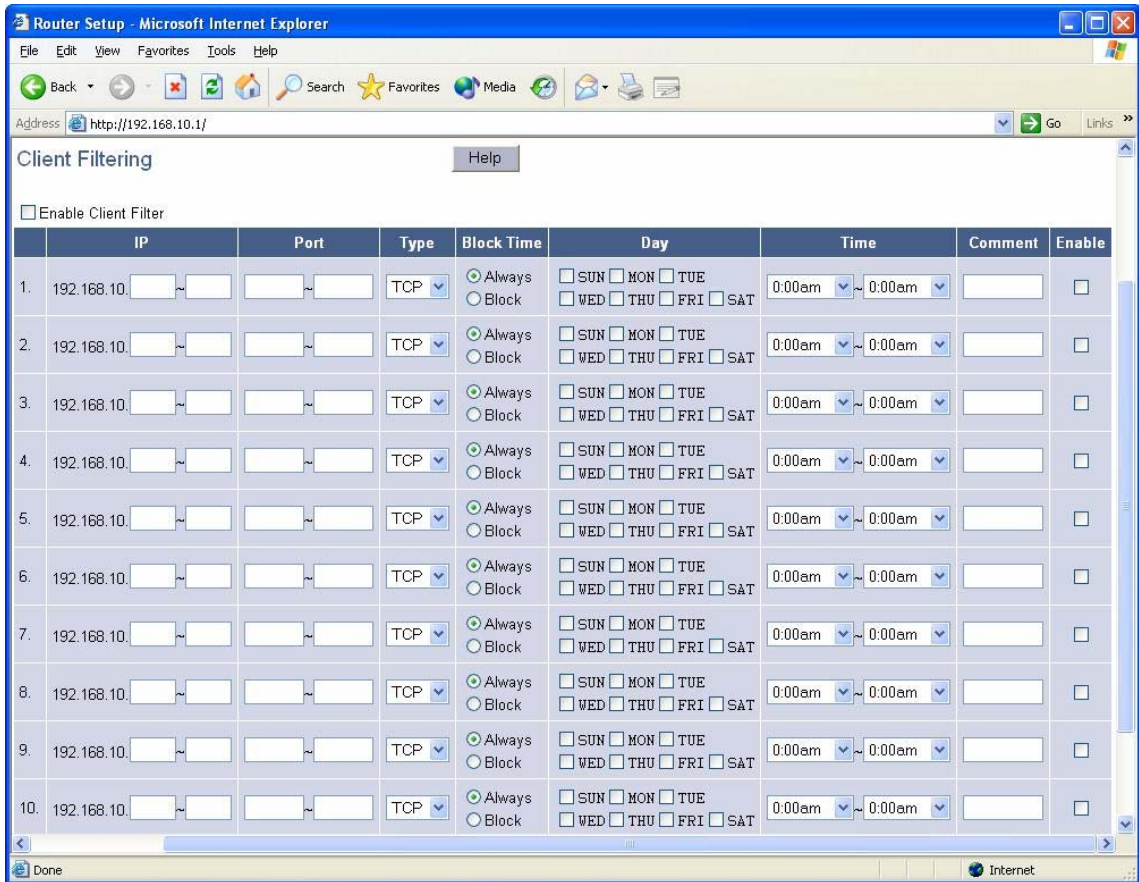


Firewall Options: Select the functions that firewall supports. The selections include Enable Hacker Attack Protect, Discard PING from WAN side, Unallow to PING the Gateway, Drop Port Scan packets, Allow to Scan Security Port (113), Discard NetBios Packets, Accept Fragment Packets and Send ICMP packets when error.

Client Filtering

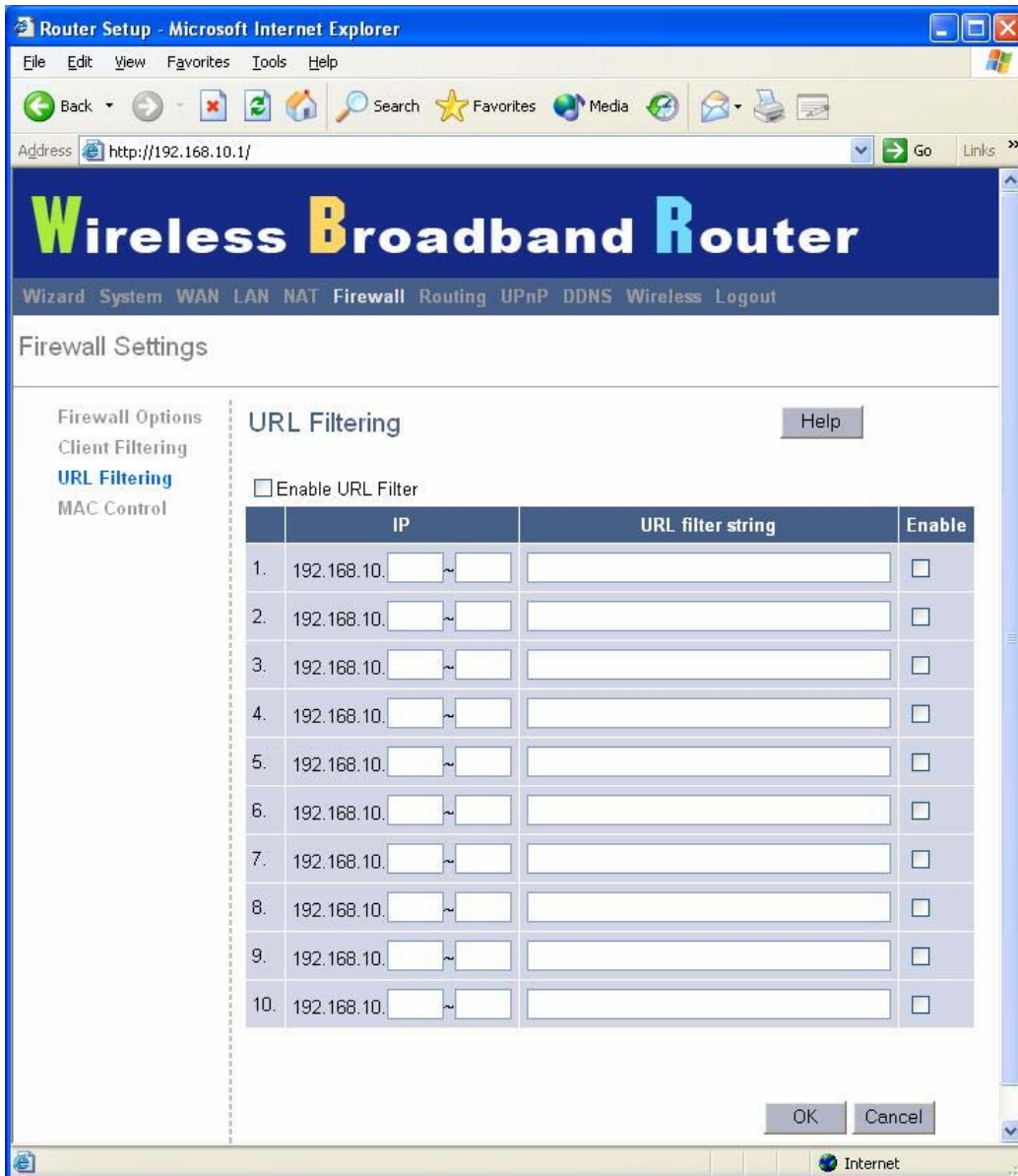
You can filter Internet access for local clients based on IP addresses, application types, (i.e., HTTP port), and time of day.

For example, this screen shows that clients in the address range 192.168.2.50-99 are permanently restricted from using FTP (Port 21), while clients in the address range 192.168.2.110-119 are blocked from browsing the Internet from Monday through Friday.



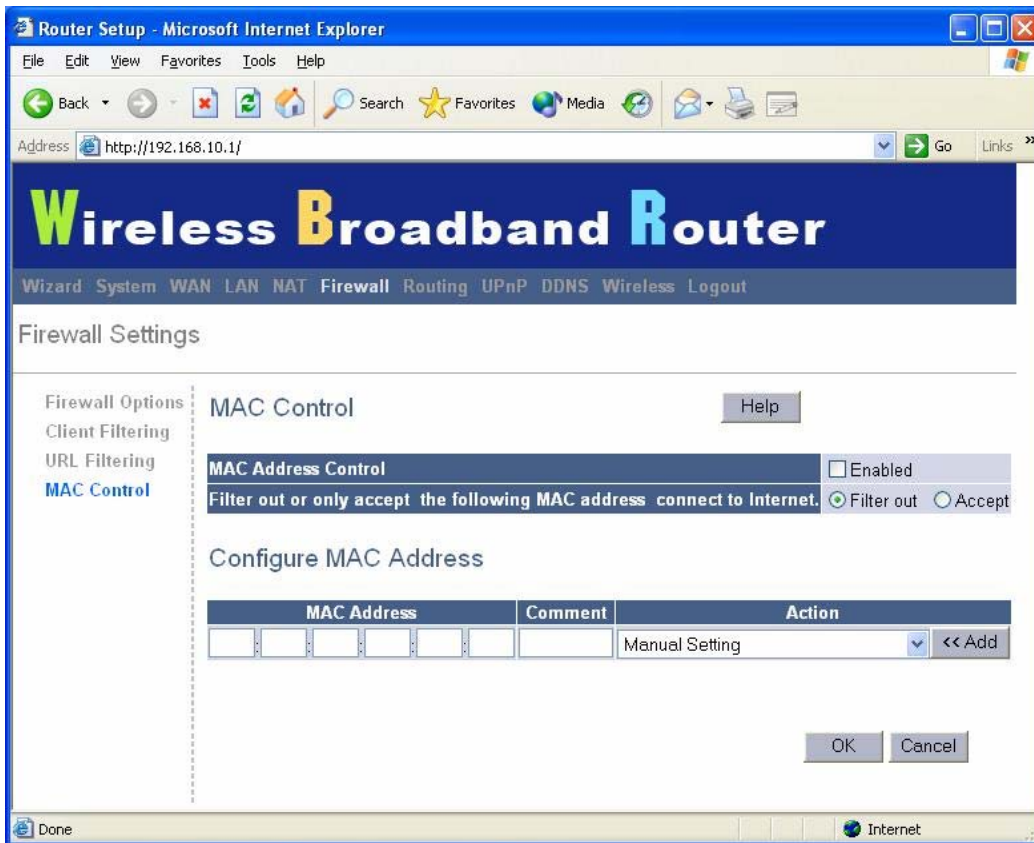
URL Filtering

To configure the URL Filtering feature, use the table as above to specify the web sites (www.somesite.com) and/or web URLs containing the keyword you want to filter on your network.



MAC Control

The MAC Control window allows user to block certain client PCs accessing the Internet based on MAC address.



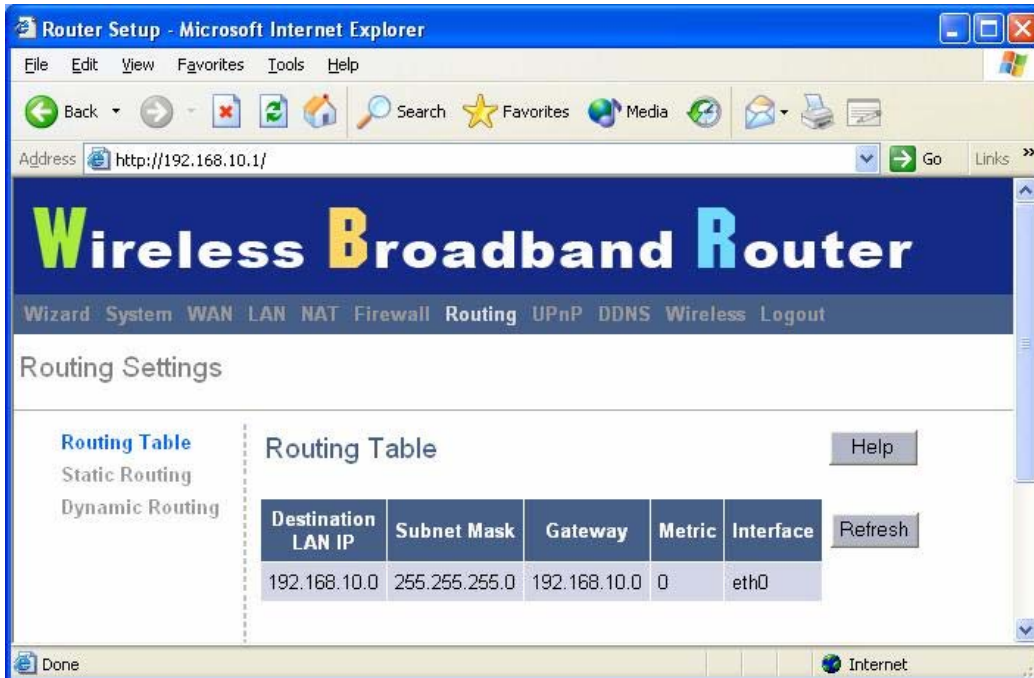
MAC Address Control: This function allows user to determine whether to filter out or accept the following MAC address connect to Internet.

Configure MAC Address: Enter the MAC address to filter out or to accept.

3.7 Routing

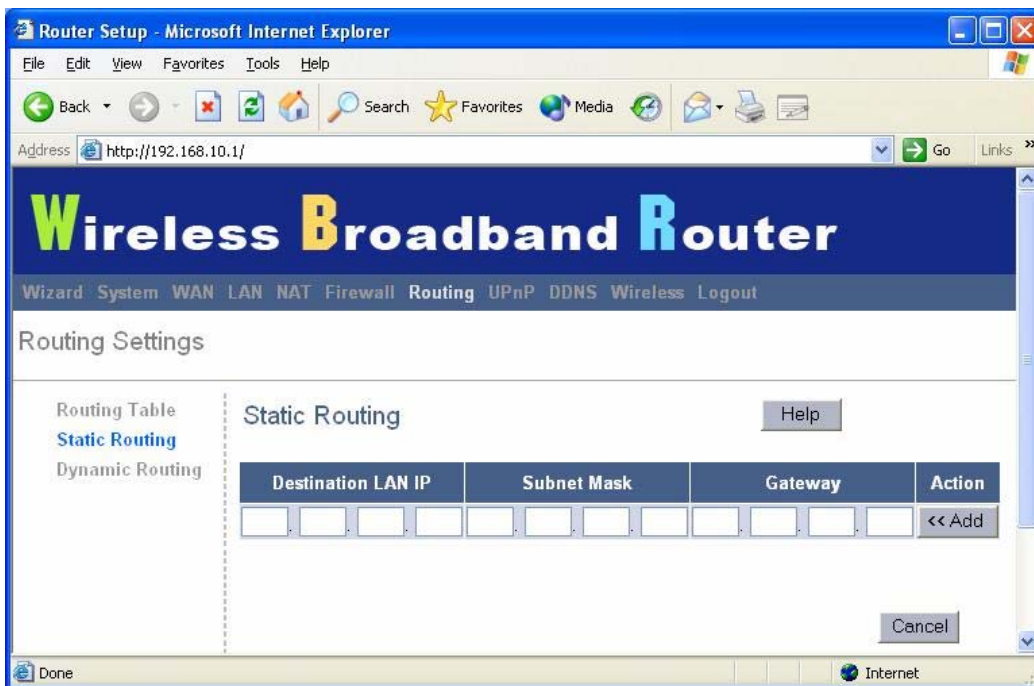
Routing Table

The Routing Table window displays the current routing information in the system.



Static Routing

A static route is a pre-determined pathway that network information must travel to reach a specific host or network.



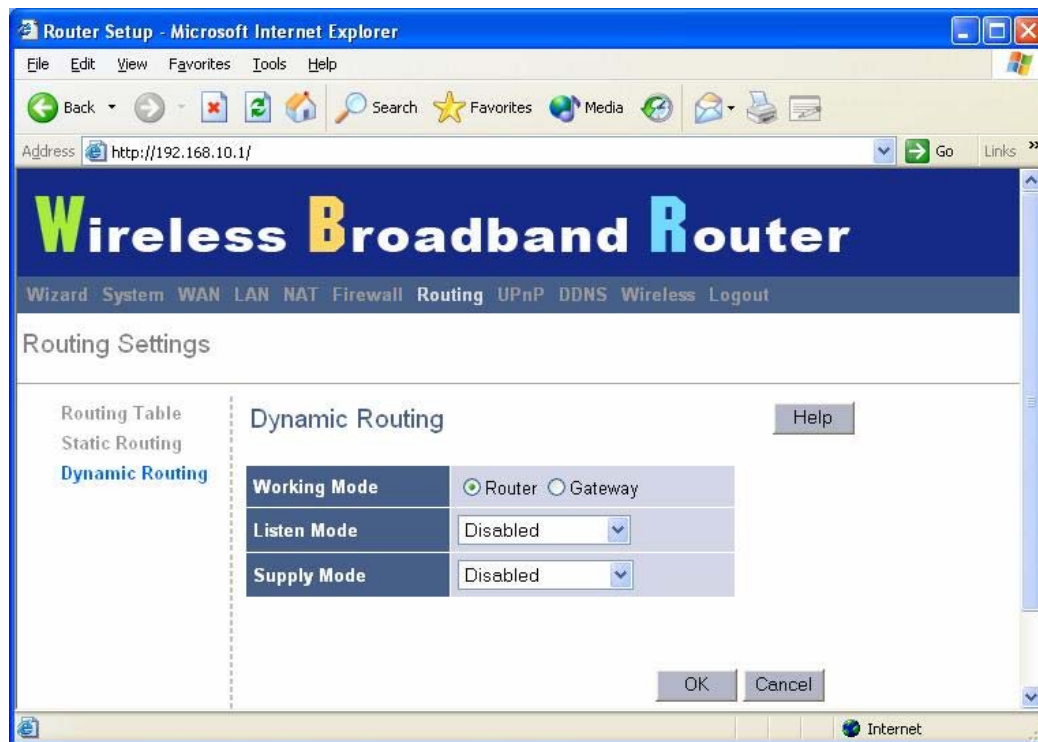
Destination LAN IP: The network address of destination LAN.

Subnet Mask: The subnet mask of destination LAN.

Gateway: The next stop gateway of the path toward the destination LAN. This is the IP of the neighbor router that this router should communicate with on the path to the destination LAN.

Dynamic Routing

Dynamic Routing can be used to cache routes learned by routing protocols, thus allowing the automation of static routing maintenance. The router, using the RIP (Routing Information Protocol) protocol, determines the network packet's route based on the fewest number of hops between the source and the destination. In this case, you could automatically adjust to physical changes in the network layout.



Working Mode: Select whether the wireless broadband router acts like router or gateway.

Listen Mode: Enable this mode to allow RIP server to receive routing information and updating the routing information.

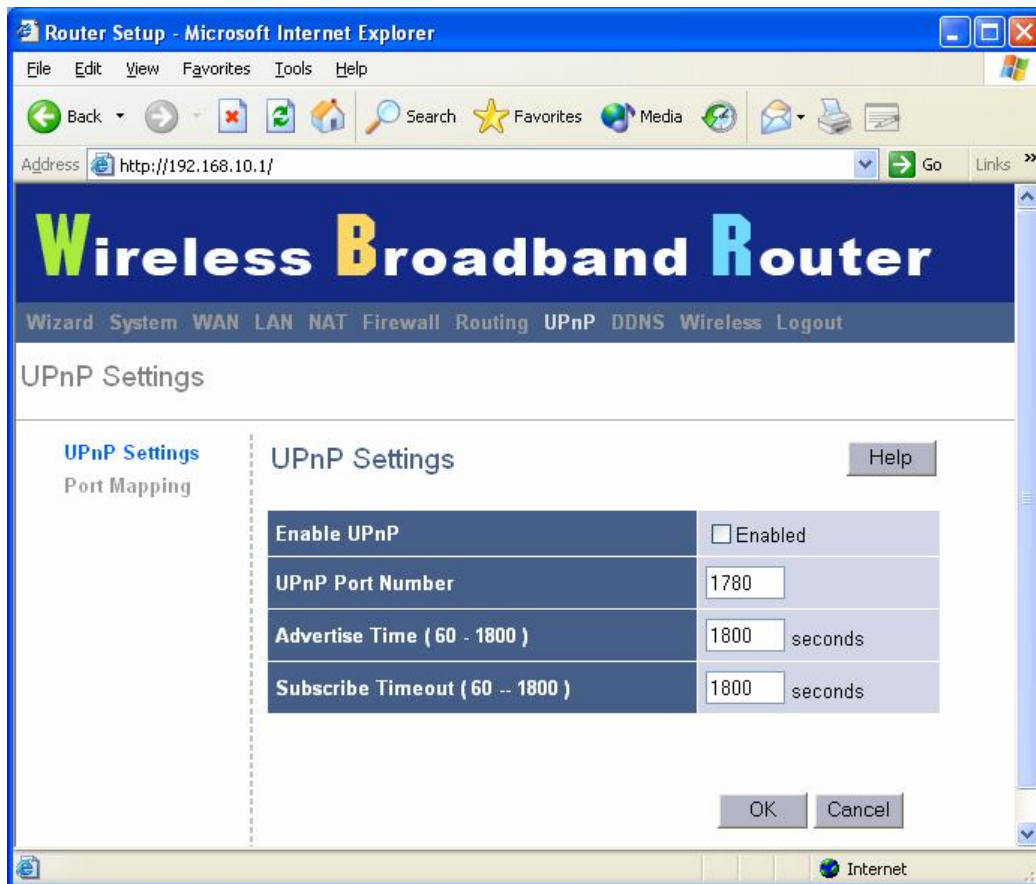
Supply Mode: Enable this mode to allow RIP server to send out routing information and updating the routing information.

3.8 UPnP (Universal Plug and Play)

UPnP Settings

UPnP (Universal Plug and Play) allows automatic discovery and configuration of equipment attached to your LAN. UPnP is supported by Windows ME, XP, or later. It provides compatibility with networking equipment, software and peripherals of the over 400

vendors that cooperate in the Plug and Play forum.



UPnP Settings: You can Enable or Disable UPnP feature here.

Port Mapping

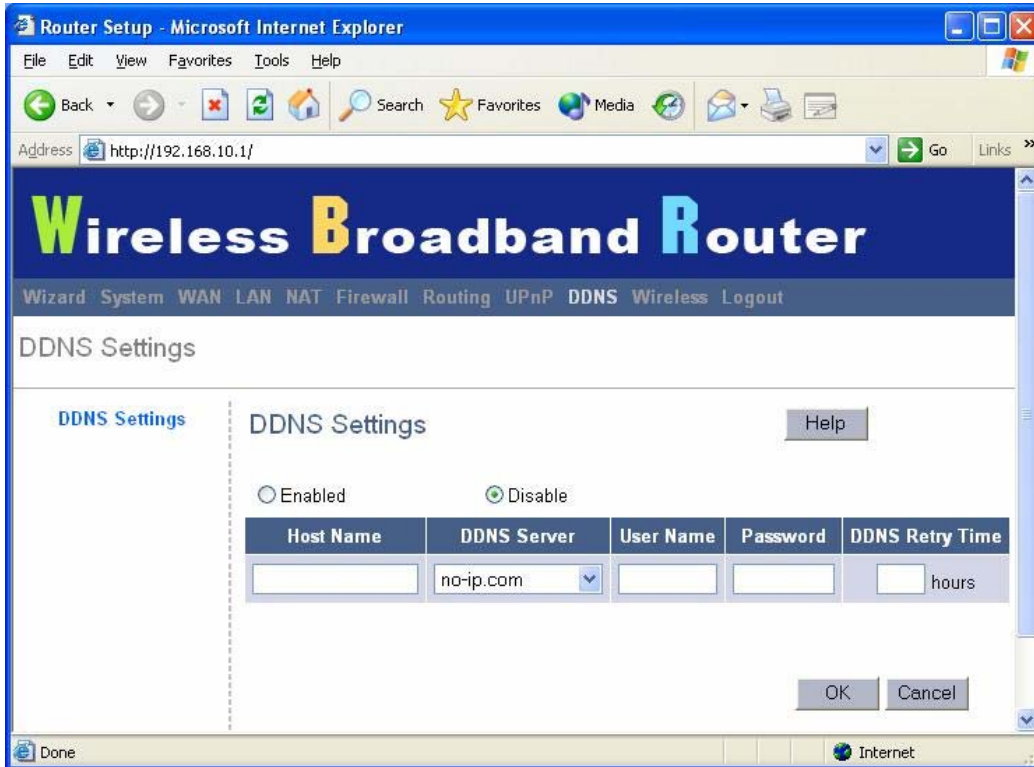
The Port Mappings window displays all UPnP ports mapping information.



3.9 DDNS

DDNS Dynamic DNS)

DDNS (Dynamic DNS) provides you on the Internet with a method to tie their domain name to a computer or server. DDNS allows your domain name to follow your IP address automatically by having your DNS records changed when your IP address changes.

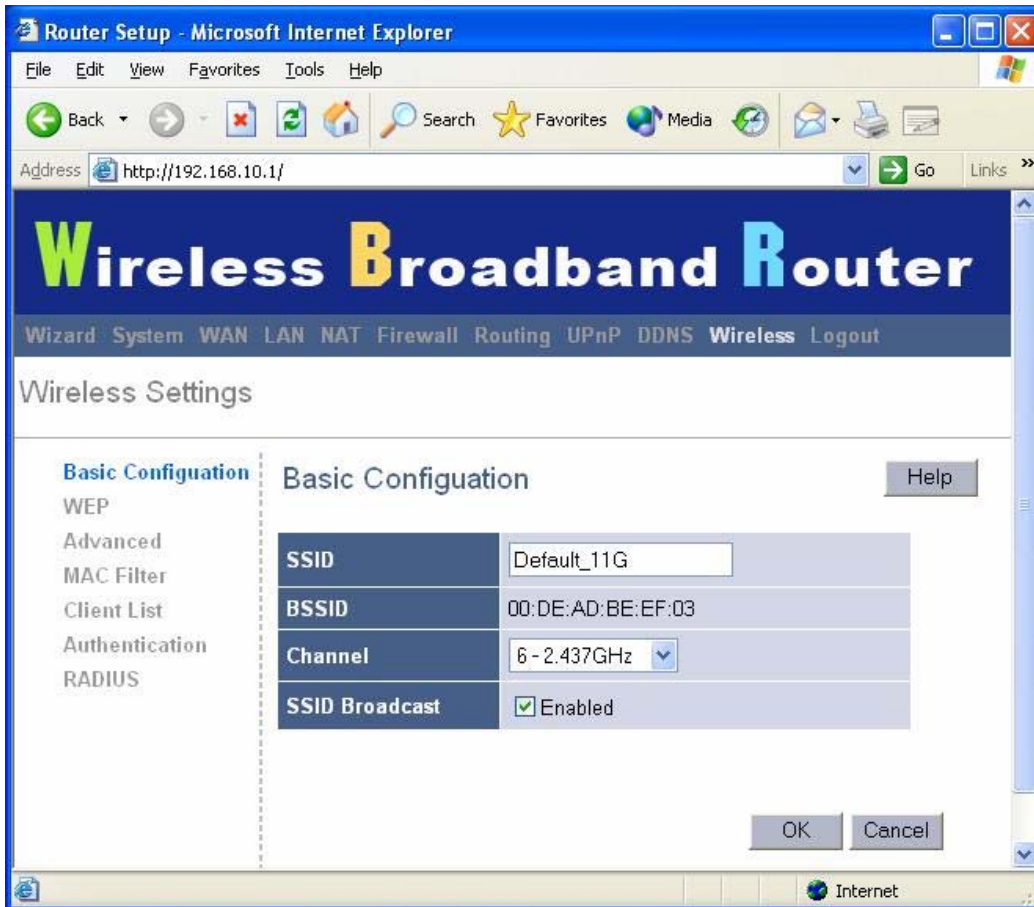


DDNS: Enable/Disable the DDNS function of this router.

3.10 Wireless

Basic Configuration

The Basic Configuration window allows user to set wireless SSID, Channel and enable/disable SSID Broadcast.



SSID: SSID (Service Set Identifier) is the network name (by default: Default_11G). It is case-sensitive and must not exceed 32 characters. To communicate, all wireless devices in the network should share the same SSID.

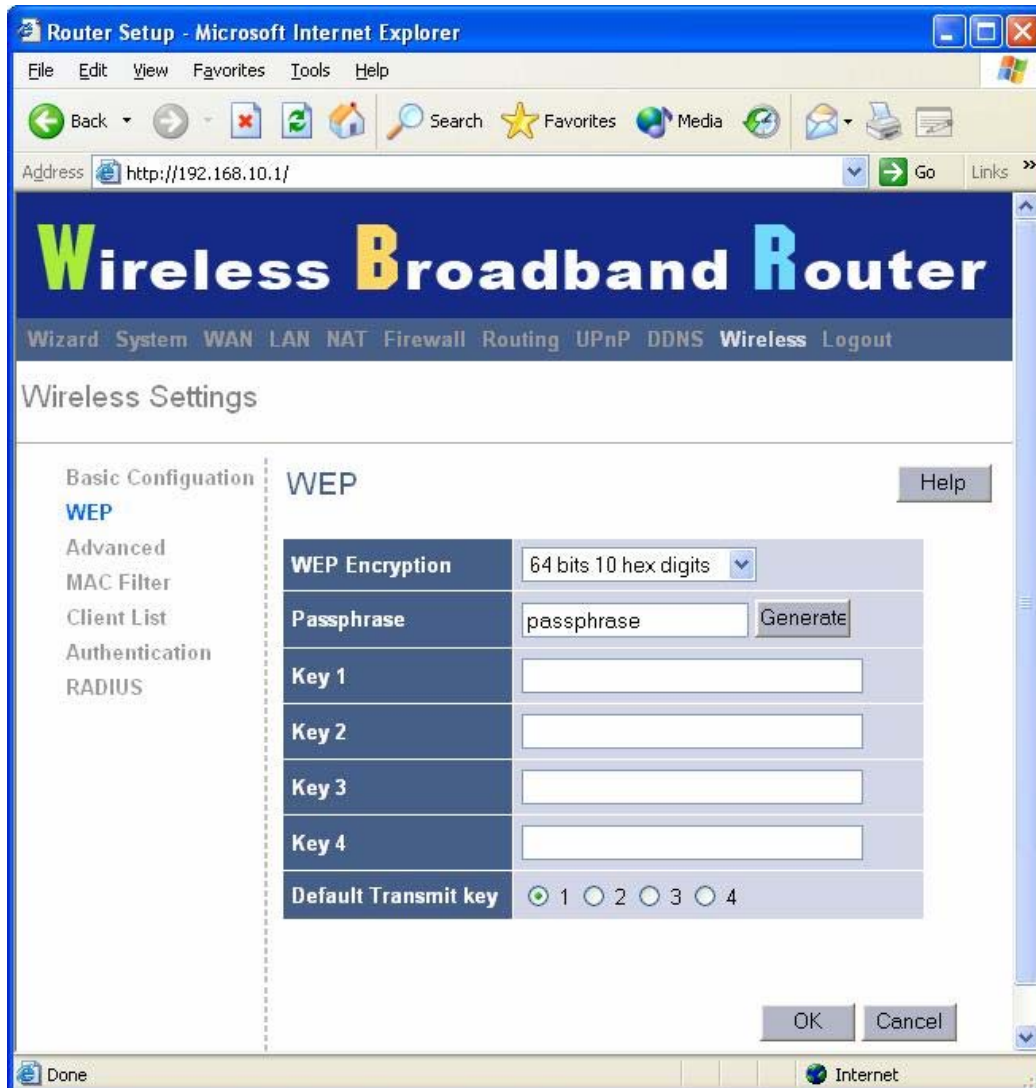
BSSID: Basic Service Set Identification. BSSID is used to identify the name of an ad-hoc wireless network.

Channel: The channel used by the wireless LAN (by default: channel 6). All devices in the same wireless LAN should use the same channel.

SSID Broadcast: To enable or disable SSID broadcast function.

WEP (Wired Equivalent Privacy)

The WEP window allows user to set up wireless WEP settings, such as set WEP key length and generate new key. It's a secure data transmission that protects wireless LAN from casual eavesdropping.



WEP Encryption: You may disable or enable the WEP function from the setting item. The selections in the setting item are changed based on the key format.

Passphrase: The name of the set of WEP keys.

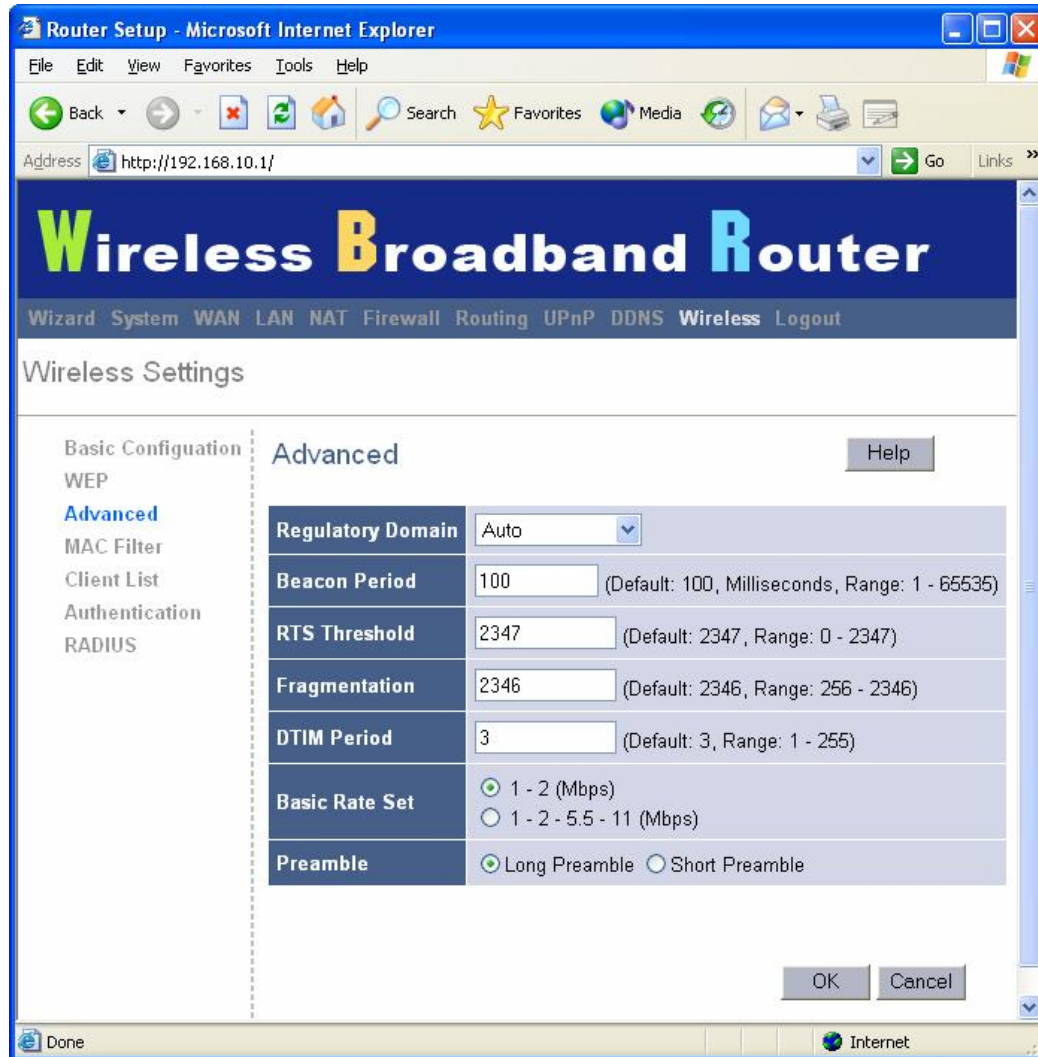
Key 1 - Key 4: The WEP keys are used to encrypt data transmitted in the wireless network. Fill the text box by following the rules below. 64-bit WEP: input 10-digit Hex values (in the "AF", "a-f" and "0-9" range) or 5-digit ASCII character as the encryption keys. 128-bit WEP: input 26-digit Hex values (in the "A-F", "a-f" and "0-9" range) or 13-digit ASCII characters as the encryption keys.

Default Transmit key: To select which key to be the default key for the router.

Advanced

The Advanced window allows user to set up wireless broadband router's advanced wireless settings, such as Regulatory Domain, Beacon Period, RTS Threshold, Fragmentation,

DTIM Period, Basic Rate Set, TX Rates and Preamble.



Regulatory Domain: Allows user to select the region wireless broadband router is located. The router's Default setting is Auto which means router will automatically adjust which regulatory domain it will operate with.

Beacon Period: This value represents the time interval between beacons broadcast by the AP.

RTS Threshold: This value represents the minimum size of data frames above which Request-To-Send (RTS) protocol is used. RTS helps to prevent data collision from hidden nodes.

Fragmentation: For efficient high-traffic situations, large files are split into fragments. This parameter specifies the default packet size.

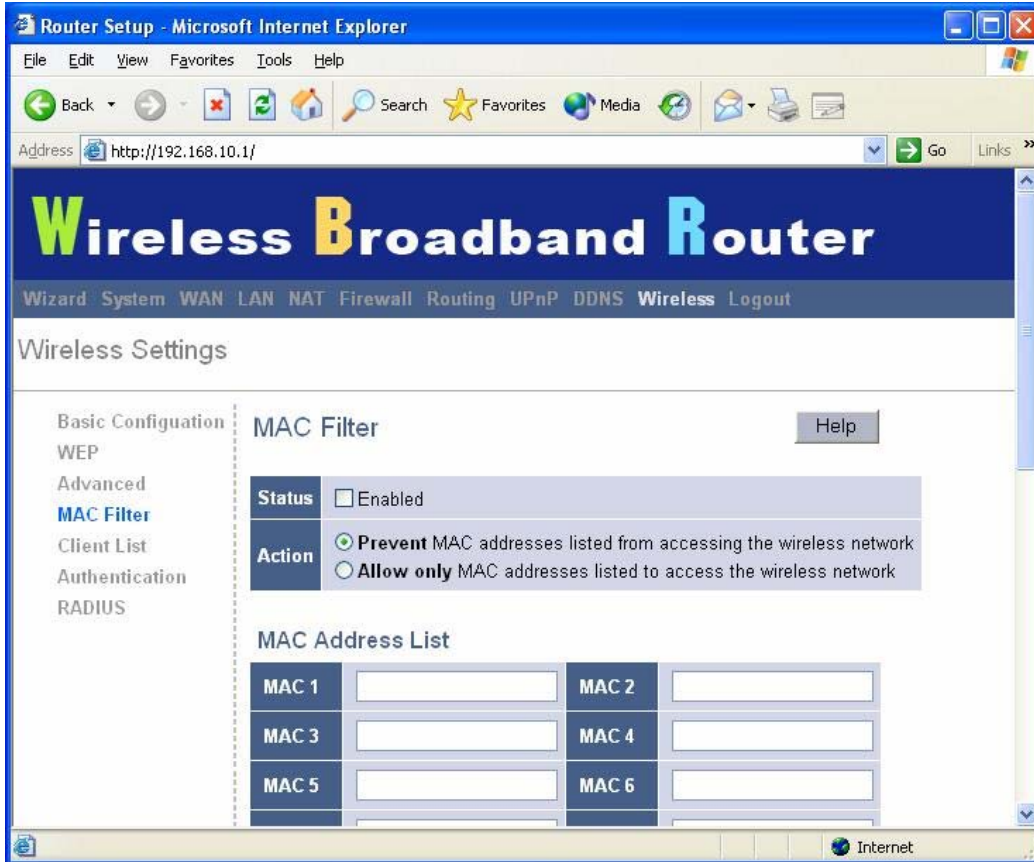
DTIM Period: This parameter specifies the number of beacon intervals between successive Delivery Traffic Indication Maps (DTIMs).

Basic Rate Set: Basic data transfer rate.

Preamble: Either Short (72 bits) or Long (144 bits).

MAC Filter

The MAC Filter window allows user to set wireless broadband router to allow/prevent devices from listed MAC addresses to access the router.

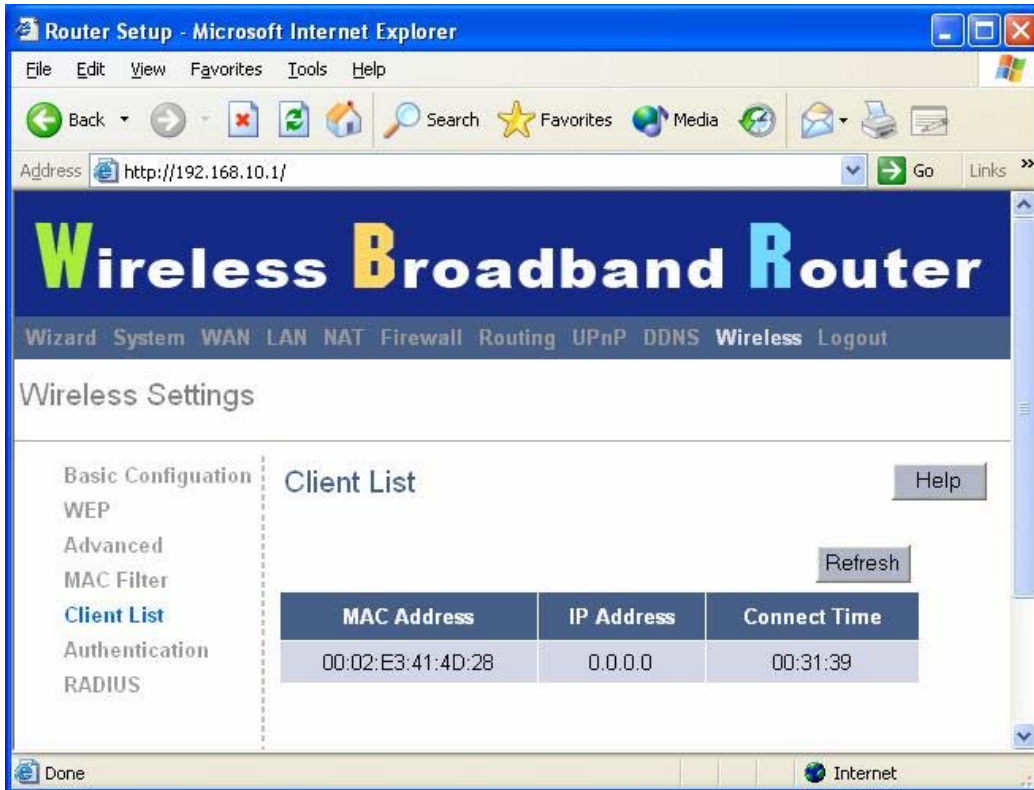


MAC Address Filter: This field allows user to select whether the broadband wireless router allows the MAC address to access the wireless network or prevent the MAC address to access the wireless network.

MAC Address List: Enter the MAC addresses for the router filtering function.

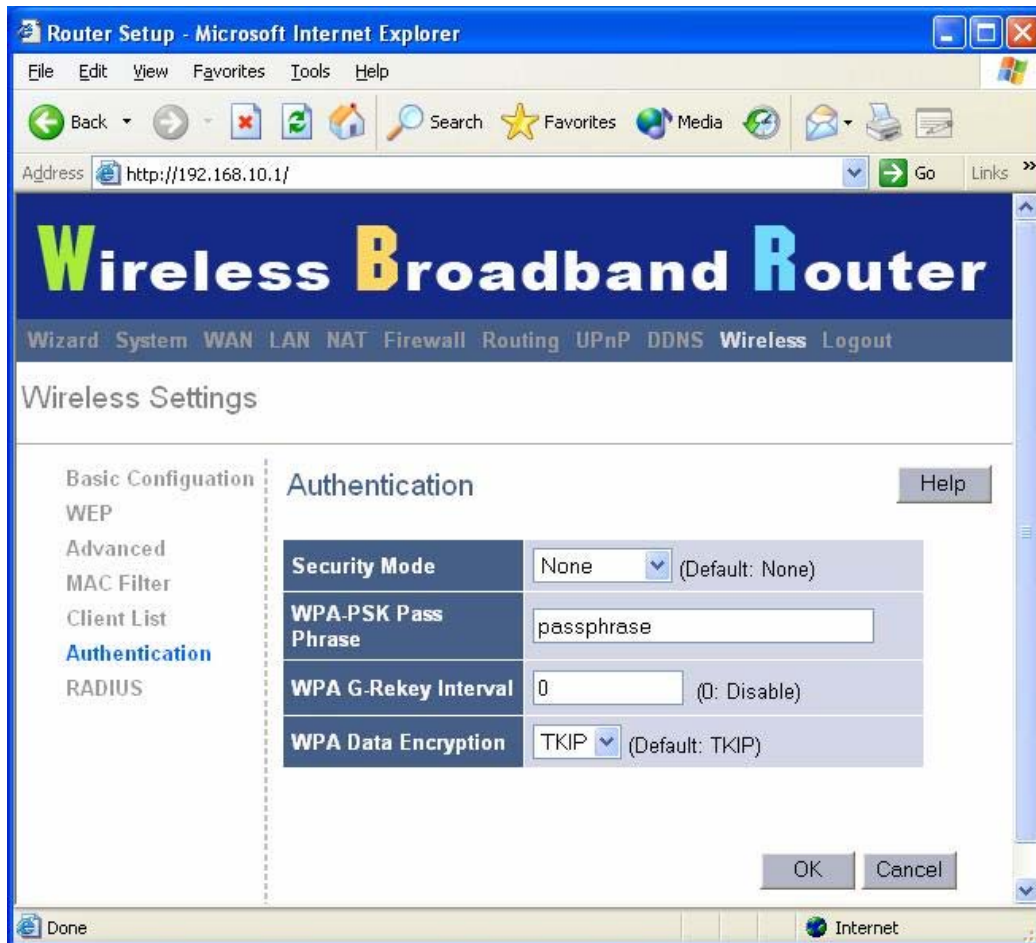
Client List

The Client List windows displays all the clients connect to wireless broadband router.



Authentication

The Authentication Setting window allows user to set up wireless security settings, such as Security Mode, WPA-PSK Pass Phrase, WPA G-Rekey Interval and WPA Data Encryption.



Security Mode: Select whether the broadband wireless router operates without any security mode or with WEP, WPA and WPA-PSK mode.

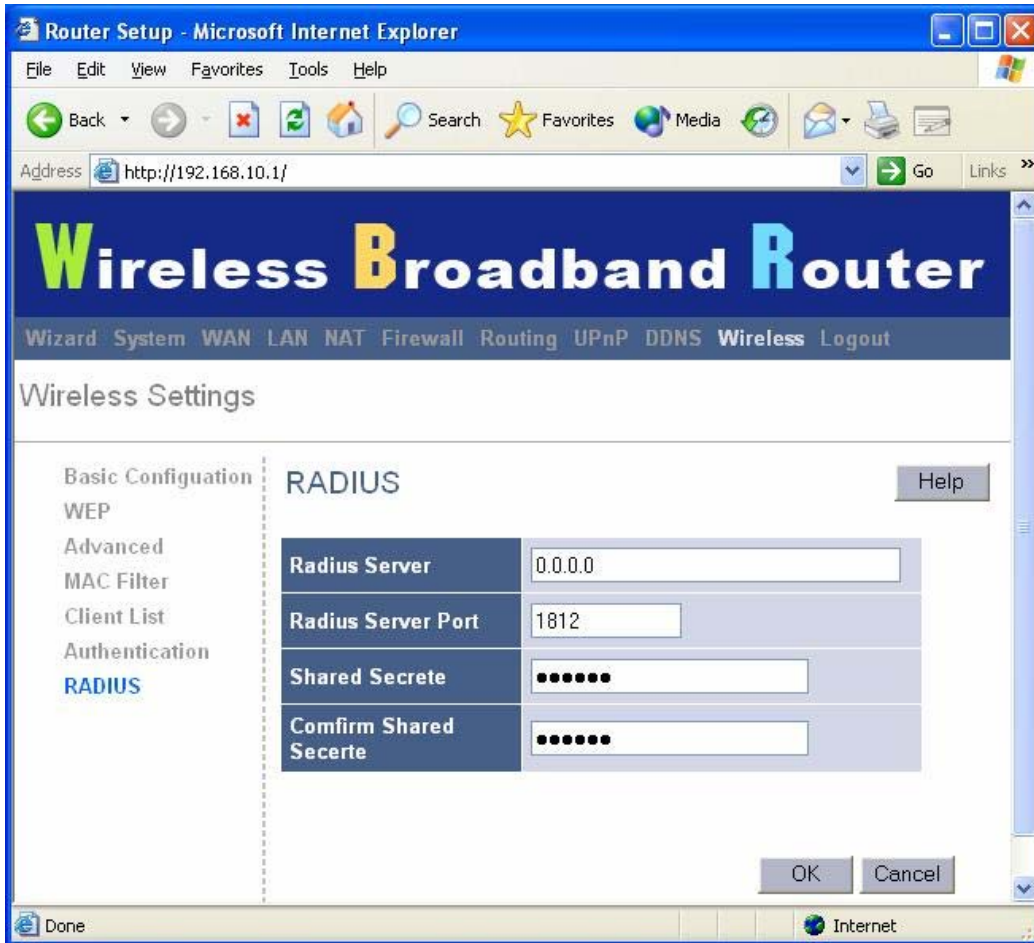
WPA-PSK Pass phrase: The name for WPA-PSK mode.

WPA G-Rekey Interval: Enter the time period the broadband wireless router changes WPA G-Rekey.

WPA Data Encryption: Select whether the broadband wireless router uses TKIP or AES data encryption.

RADIUS

The Radius Settings windows allows user to set up wireless broadband router's Radius server, such as Radius Server (server IP address), Radius Server Port, Shared Secret (like password) and Confirm Shared Secret (confirm password).



Radius Server: Enter the Radius (Remote Authentication Dial-In user Service) server IP address.

Radius Server Port: Enter the Radius server port number.

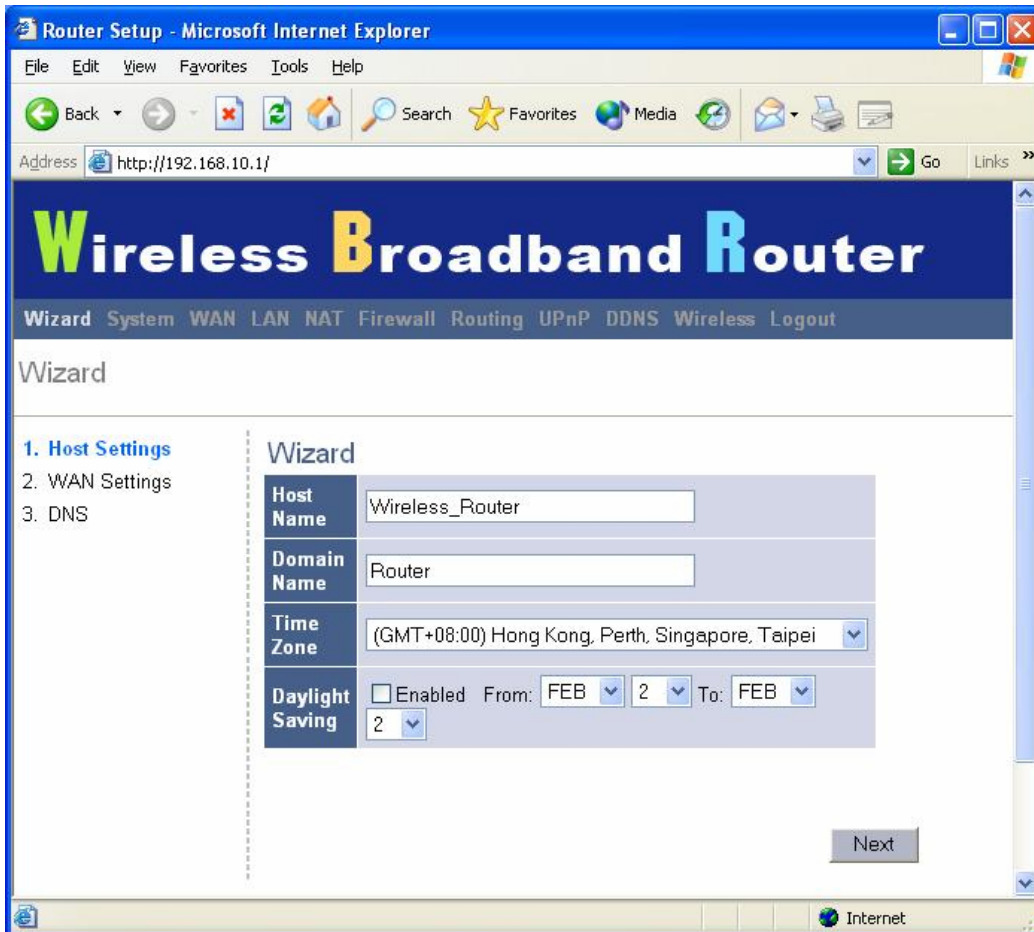
Shared Secrete: Enter the password for the Radius server.

Confirm Shared Secerte: Confirm the password for the Radius server.

3.11 Wizard

Host Settings

The Host Settings window allows user to configure basic settings of wireless broadband router, such as Host Name, Domain Name, Time Zone and Daylight Saving. Click "Next" to update WAN settings.



Host Name: Enter a hostname if it was provided by the ISP (Default: Wireless_Router).

Domain Name: Enter a Domain Name if it was provided by the ISP (Default: Router).

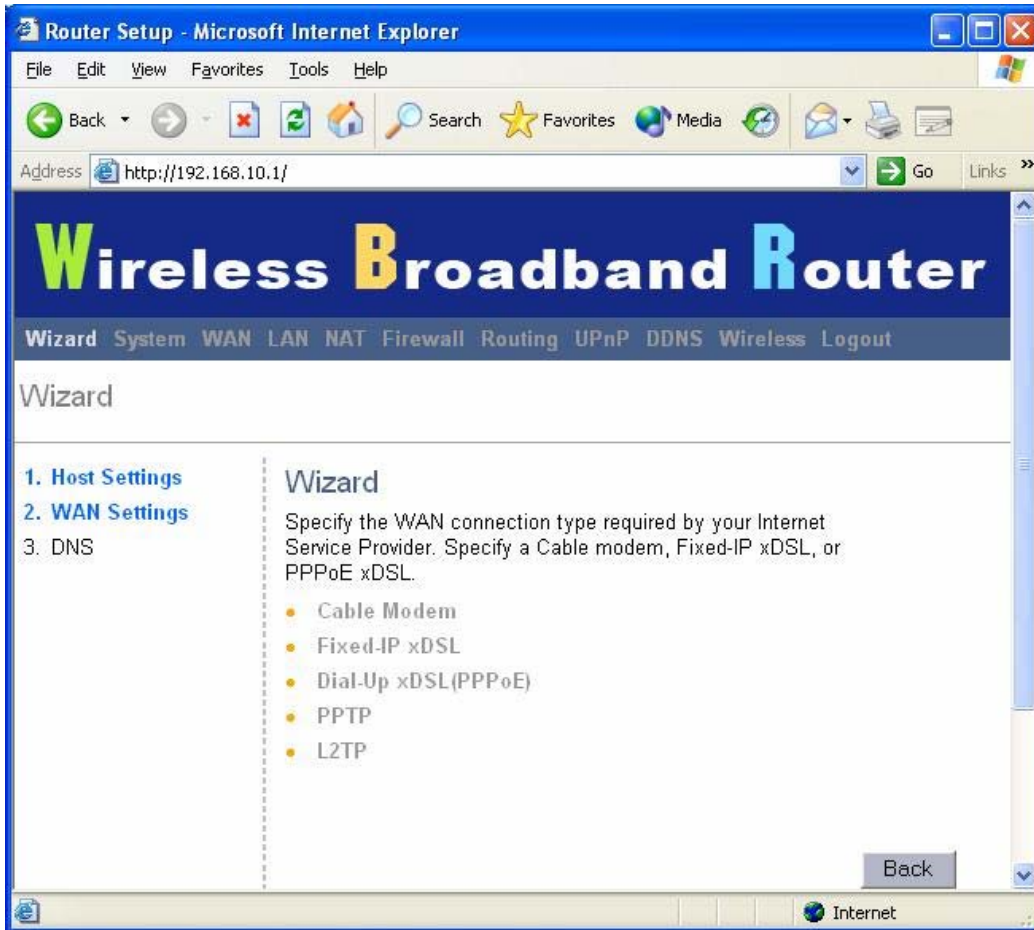
Time Zone: Select the time zone of the country you are currently in. The router will set its time based on your selection.

Daylight Saving: The router can also take Daylight savings into account. If you wish to use this function, you must check/tick the enable box to enable your daylight saving configuration.

Next: Click **Next** to update WAN settings.

WAN Settings

The WAN Settings window allows user to specify the WAN connection type, such as Cable Modem, Fixed-IP xDSL, or PPPoE xDSL. After you setup the connection settings, click **Next** to update the DNS settings.



Cable Modem: If your broadband wireless router connects to the cable modem, click Cable Modem to enable/disable the MAC cloning function (MAC address is provided by your ISP).

Fixed-IP xDSL: If your broadband wireless router connects to the Fixed-IP xDSL, click Fixed-IP xDSL to enter the IP address and gateway address are provided by ISP.

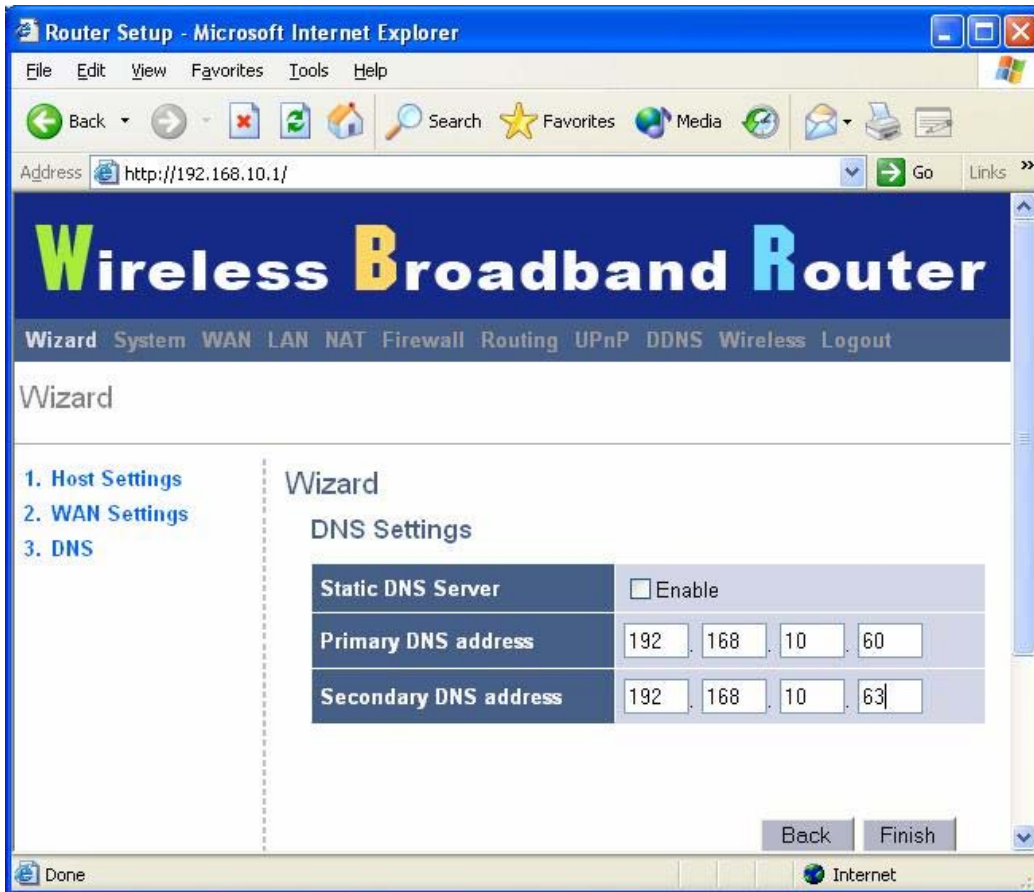
Dial-Up xDSL (PPPoE): If your broadband wireless router connects to the Dial-Up xDSL, click Dial-Up xDSL to enter the login information is provided by ISP.

PPTP: If your broadband wireless router connects through the PPTP, click PPTP to enter the login information is provided by ISP.

L2TP: If your broadband wireless router connects through the L2TP, click L2TP to enter the login information is provided by ISP.

DNS

You can update the DNS settings only if you enabled the DNS server under the WAN configuration page (please refer DNS configuration in page 31). After you change the DNS configurations, click **Finish** to update the DNS settings of the broadband wireless router.



3.12 Help

Click **Help** on the Top-right button of each Web-based Utility section to connect Help screen. On the Help screen, you can see each Web-based Utility of wireless broadband router. The wireless broadband router functions are described and some technology terms are listed too.

Router Setup - Microsoft Internet Explorer

File Edit View Favorites Tools Help

Back Forward Stop Home Search Favorites Media Print Mail

Address http://192.168.10.1/ Go Links >>

Wireless Broadband Router

Wizard System WAN LAN NAT Firewall Routing UPnP DDNS Wireless Logout

System Settings

System Status

- System Settings
- Administrator Settings
- Firmware Upgrade
- Configuration Tools
- System Log

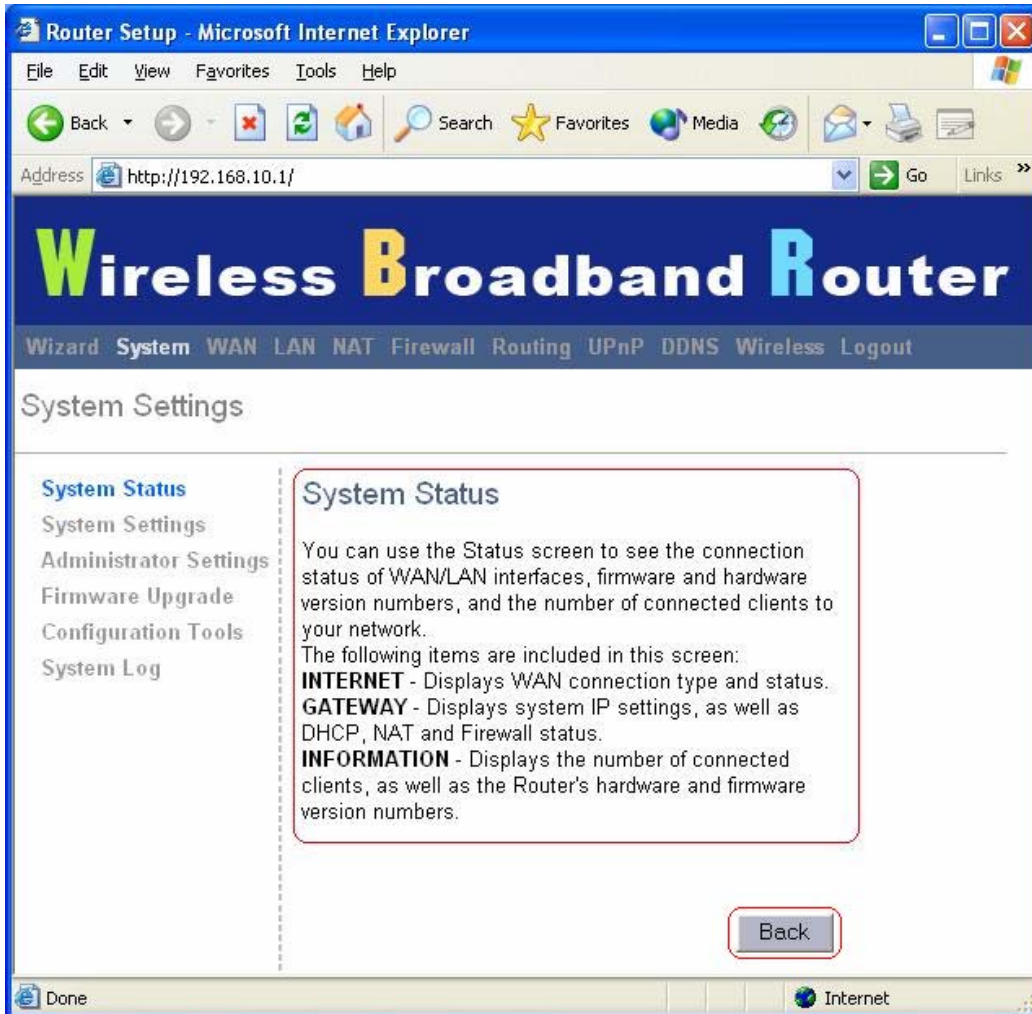
System Status Help

INTERNET Refresh

Cable/DSL	Disconnected
WAN IP	0.0.0.0
Subnet Mask	0.0.0.0
Gateway	0.0.0.0
DNS	168.96.1.1
Secondary DNS	0.0.0.0
Domain Name	
Connection Type	Dynamic IP
Connection Time	00:00:00

Release Renew

Done Internet



3.13 Logout

Click **Logout** in the task bar to initiate wireless broadband router logout process.



Click **OK** to logout the wireless broadband router utility.



4. Troubleshooting

This chapter covers some common problems that user may encounter while accessing the wireless router and some possible solutions for them. If you follow the suggested instructions to configure the wireless router, but router still does not function properly, please contact your local dealer for assistance.

Q1) **Can not connect to the wireless router.**

Ans: Check the following.

- a) If the wireless router is properly installed, if LAN connections are OK, and if wireless Router is powered on.
- b) Ensure that your PC and wireless router are on the same network segment.
- c) If your PC is set to "Obtain an IP Address automatically" (DHCP client), restart it.
- d) If your PC uses a Fixed (Static) IP address, ensure that it is using an IP Address within the range **192.168.10.2** to **192.168.10.254** and thus compatible with the wireless router's default IP Address of **192.168.10.1**. Also, the Network Mask should be set to **255.255.255.0** to match the wireless router. In Windows, you can check these settings by using "**Control Panel → Network**" to check the "**Properties**" for the TCP/IP protocol.

Q2) **When I enter a URL or IP address I get a timed out error.**

Ans: A number of things could be causing this. Try the following troubleshooting steps.

- a) Check if other PCs work. If they do, ensure that your PCs IP settings are correct. If using a fixed (static) IP address, check the Network Mask, Default gateway, and DNS as well as the IP Address.
- b) If the PCs are configured correctly, but still not working, check the wireless router. Ensure that it is connected and on. Connect to it and check its settings. If you can't connect to it, check the LAN and power connections.
- c) If the wireless router is configured correctly, check your Internet connection (DSL/cable modem etc) to see that it is working correctly.

Q3) **Some applications do not run properly when using the wireless router.**

Ans: The wireless router processes the data passing through it, so it is not transparent.

Use the Special Applications feature to allow the use of Internet applications that do not function correctly. For example, you can use DMZ function, this should work with almost every application but there is a security risk since firewall is disabled and only one PC can be used in this feature.

Q4) My PC can not locate the wireless router.

Ans: Check the following.

- a) If your PC is set to Infrastructure Mode, because the router is always in Infrastructure Mode.
- b) If the SSID on your PC and wireless router are the same. Remember that the SSID is case-sensitive.
- c) If both of your PC and wireless router have the same WEP settings. The default setting for the wireless router is disabled, so your wireless station should also have WEP disabled.
- d) If WEP is enabled on the wireless router, your PC must have WEP enabled, and the key tables (64/128 bit encryption) must match.
- e) If the wireless router's wireless screen is set to allow LAN access to select wireless stations only, then each of your wireless stations must have been selected or access will be blocked.
- f) To see if radio interference is causing a problem, check if connection is possible when close to the wireless router. Remember that the transmission range can be as short as 100 feet in poor environment.

Q5) Wireless connection speed is very slow.

Ans: A wireless system transmission speed depends on the distance and the environment.

To obtain the highest possible connection speed, you can try the followings:

- a) Try to adjust wireless router location and orientation.
- b) If there are interference problems, change to another wireless channel.
- c) If other devices cause the interference, you should turn off that device or relocate it.

Q6) The "Status" light is ON (steady Green) after power on, it means the router is hung

Ans : Please disconnect the power adapter from the power jack on the router and reconnect the power adapter again to the router, check if the "Status" light is flashing normally.

Free Manuals Download Website

<http://myh66.com>

<http://usermanuals.us>

<http://www.somanuals.com>

<http://www.4manuals.cc>

<http://www.manual-lib.com>

<http://www.404manual.com>

<http://www.luxmanual.com>

<http://aubethermostatmanual.com>

Golf course search by state

<http://golfingnear.com>

Email search by domain

<http://emailbydomain.com>

Auto manuals search

<http://auto.somanuals.com>

TV manuals search

<http://tv.somanuals.com>