



# **Wireless – N USB Adapter**

## **User's Manual**

**Model # AWN-USB-11N2**

### ***FCC Warning***

This equipment has been tested and found to comply with the limits for a Class C digital device, pursuant to part 15 of the FCC Rules. These limits are designed to provide reasonable protection against harmful interference in a residential installation. This equipment generates, uses, and can radiate radio frequency energy and, if not installed and used in accordance with the instructions, may cause harmful interference to radio communication. However, there is no guarantee that interference will not occur in a particular installation. If this equipment does cause harmful interference to radio or television reception, which can be determined by turning the equipment off and on, the user is encouraged to try to correct the interference by one or more of the following measures:

- Reorient or relocate the receiving antenna.
- Increase the separation between the equipment and receiver.
- Connect the equipment into an outlet on a circuit different from that to which
- Consult the dealer or an experienced radio/TV technician for help. the receiver is connected.

**FCC Caution:** Any changes or modifications not expressly approved by the party responsible for compliance could void the user's authority to operate this equipment.

This device complies with Part 15 of the FCC Rules. Operation is subject to the following two conditions: (1) This device may not cause harmful interference, and (2) this device must accept any interference received, including interference that may cause undesired operation.

### **IMPORTANT NOTE:**

FCC Radiation Exposure Statement:

This equipment complies with FCC radiation exposure limits set forth for an uncontrolled environment. This equipment should be installed and operated with a minimum distance of about eight inches (20cm) between the radiator and your body.

This transmitter must not be co-located or operated in conjunction with any other antenna or transmitter.

### **Modular Approval Statement:**

This device is intended to be used only for OEM integrator under the following conditions:

- 1) The antenna must be installed such that 20 cm is maintained between the antenna and users, and
- 2) The transmitter module may not be co-located with any other transmitter or antenna.

**IMPORTANT NOTE:**

In the event that these conditions cannot be met (for example certain laptop configurations or co-location with another transmitter), then the FCC authorization is no longer considered valid and the FCC ID cannot be used on the final product. In these circumstances, the OEM integrator will be responsible for re-evaluating the end product (including the transmitter) and obtaining a separate FCC authorization.

***Revision History***

Revision	History
V2.0	Second release

All brand and product names mentioned in this manual are trademarks and/or registered trademarks of their respective holders.

# Contents

<b>1. INTRODUCTION.....</b>	<b>4</b>
<b>1.1 FEATURES .....</b>	<b>4</b>
<b>1.2 LED INDICATOR .....</b>	<b>4</b>
<b>1.3 PACKAGE CONTENTS .....</b>	<b>4</b>
<b>2. SOFTWARE INSTALLATION .....</b>	<b>5</b>
<b>3. WIRELESS LAN UTILITY .....</b>	<b>12</b>
<b>3.1 GENERAL .....</b>	<b>12</b>
<b>3.2 PROFILE .....</b>	<b>12</b>
<b>3.3 AVAILABLE NETWORK.....</b>	<b>13</b>
<b>3.4 STATUS .....</b>	<b>15</b>
<b>3.5 STATISTICS .....</b>	<b>15</b>
<b>3.6 WI-FI PROTECT SETUP.....</b>	<b>16</b>
<b>4. SOFT-AP FUNCTION.....</b>	<b>17</b>
<b>4.1 SWITCH TO AP MODE .....</b>	<b>17</b>
<b>4.2 GENERAL .....</b>	<b>18</b>
<b>4.3 ADVANCED .....</b>	<b>19</b>
<b>4.4 STATISTICS .....</b>	<b>19</b>
<b>4.5 ICS .....</b>	<b>20</b>

## 1. Introduction

This is a wireless 11n USB Adapter that provides unsurpassed wireless performance for your Desktop PC or Notebook. It complies with IEEE 802.11n draft 2.0 wireless standard and is backward compatible with IEEE 802.11b/g. This USB adapter provides better wireless reception and up to 150/300 Mbps data transfer rates in 11n mode. With this adapter, you can easily upgrade your Desktop PC or Notebook wireless connectivity. Once connected, to access the network with high-speed Internet connection while sharing photos, files, music, video, printers, and storage. Get a better Internet experience with a faster wireless connection so you can enjoy smooth digital phone calls, gaming, downloading, and video streaming.

The Wireless USB adapter provides peer-to-peer communication among any compatible wireless client users and no Access Point required. It also supports WEP, WPA, WPA2, WPS, 802.1x high-level WLAN security features that guarantee the best security for users.

### 1.1 Features

- Complies with draft IEEE 802.11n standard
- Up to 150/300 Mbps data transfer rates in IEEE 802.11n mode
- Backward compatible with IEEE 802.11b/g
- Legacy and High Throughput Modes
- Supports 64/128-bit WEP Data Encryption
- Supports WPA, WPA2 (802.11i), WPS, 802.1x advanced security
- Supports Quality of Service (QoS) - WMM, WMM-PS
- Supports both Infrastructure and Ad-Hoc Networking Modes
- Supports Multiple BSSID
- Simple user setup and diagnostics utilities

### 1.2 LED Indicator

LED	Light Status	Description
ACT	Blinking	Data is being transmitted or received

### 1.3 Package Contents

- One Wireless USB Adapter
- One USB A-type Extension Cable
- One Installation CD (Drivers, Utility, User's Manual)

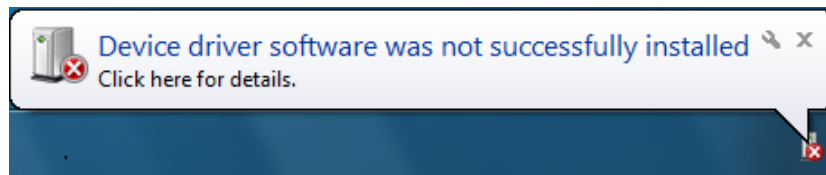
## 2. Software Installation

**Note:** The following installation was operated under Windows 7. (Procedures will be same for Windows Vista, XP and 2000 Operation System)

**Step1:** Insert the Wireless USB adapter into the USB slot of your computer. The system will automatically find the device and search for its driver.

### For Windows 7

→ Windows System will pup-up the message for new searched device.



### For Windows Vista/XP/2000

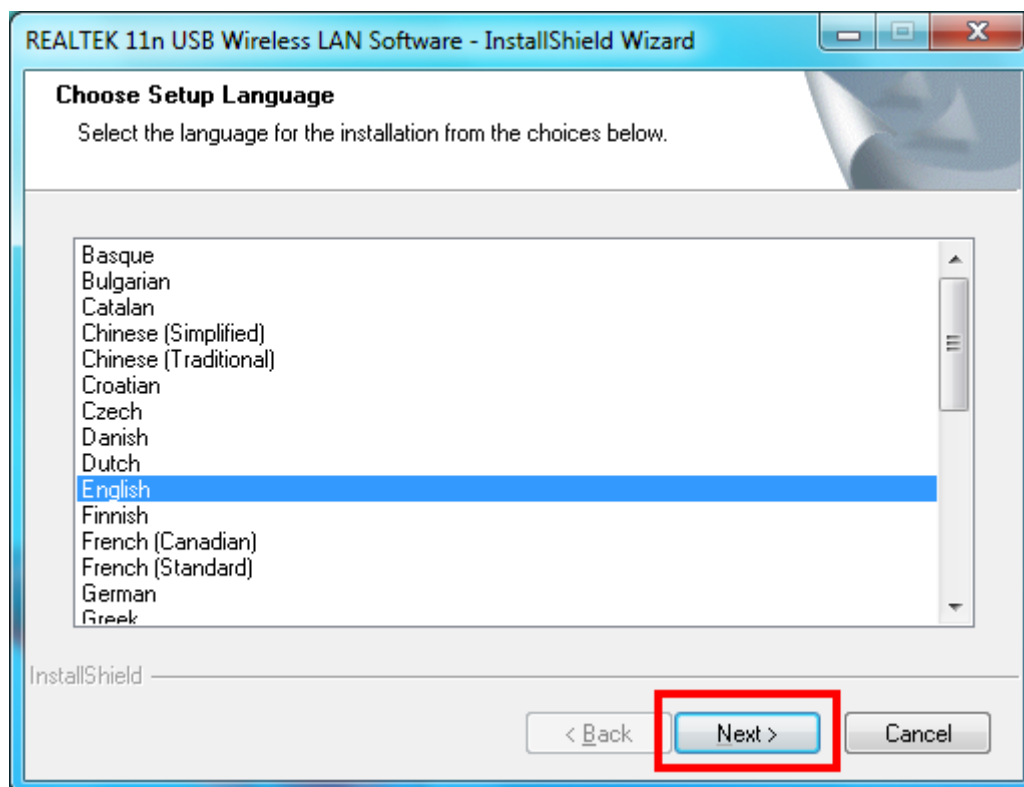
→ Please click **Cancel** to continue.



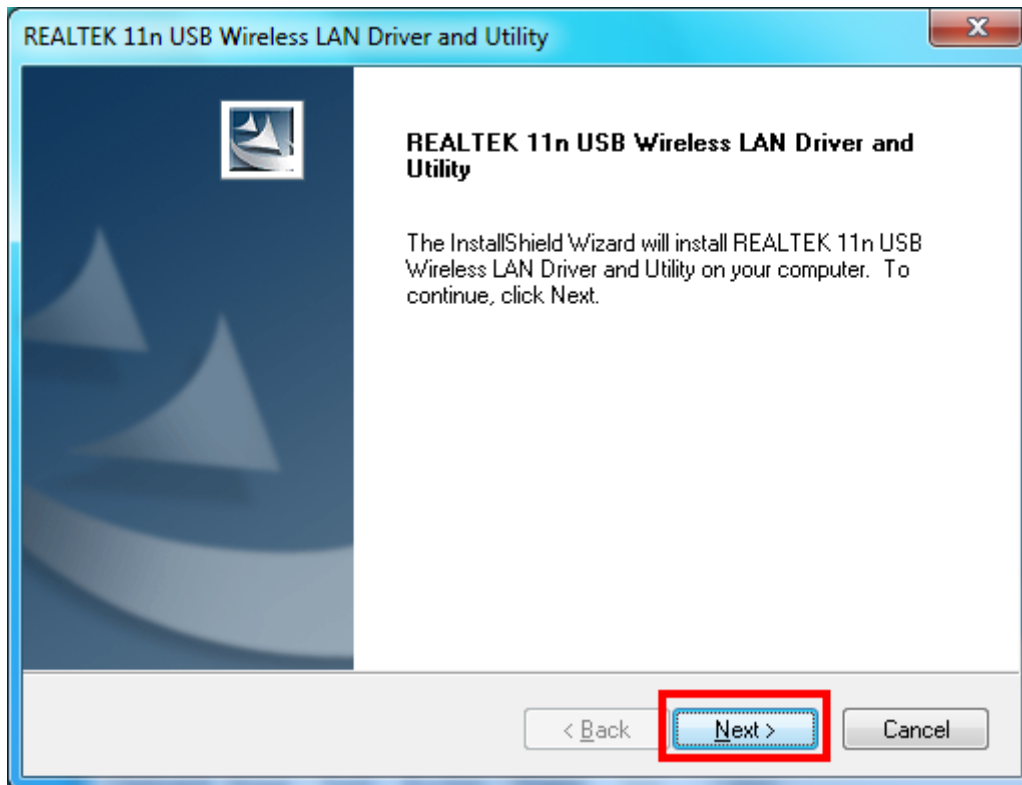
**Step2:** Insert Wireless USB Adapter Installation CD into CD-ROM drive then windows below will appear. Click **Install Driver & Utility** to begin device driver installation.



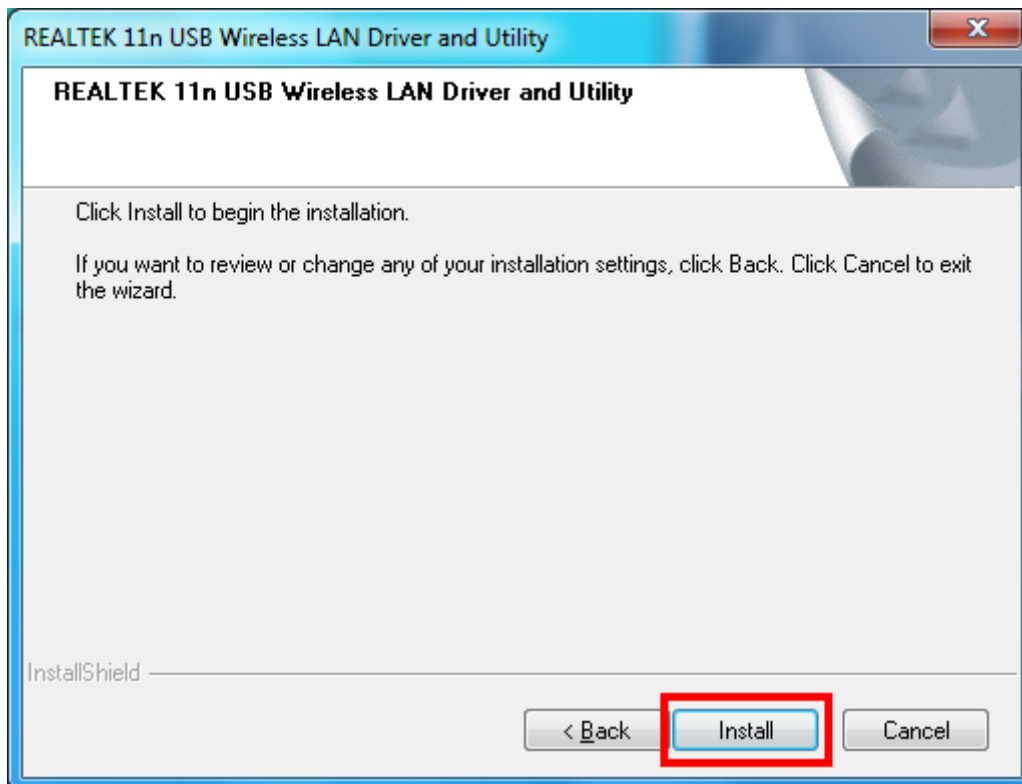
**Step3:** Select the language for this installation from the choices below and click **Next>** to continue.



**Step4:** The InstallShield Wizard will install Wireless LAN Driver and Utility on your computer. For next step, click **Next>** to continue.

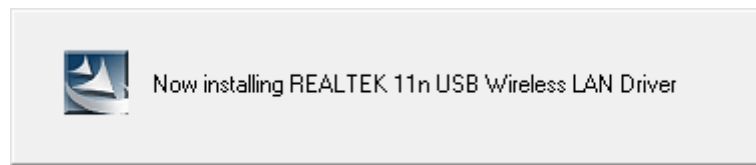


**Step5:** Click **Install** begin the installation..

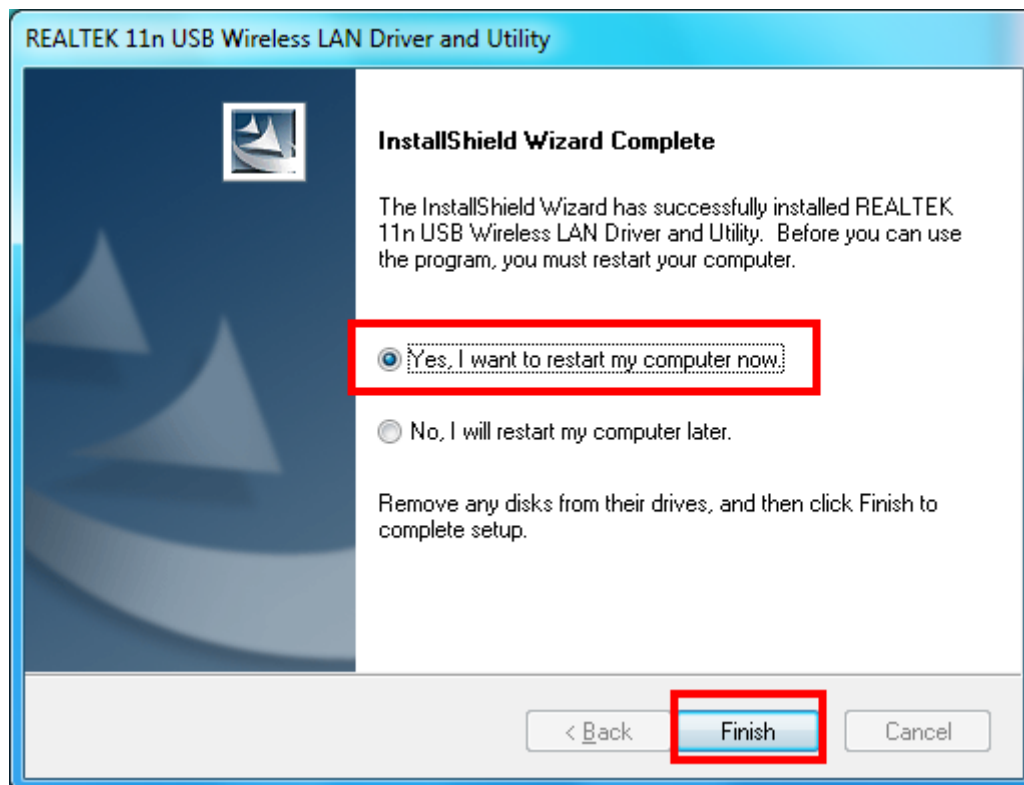




**Step6:** Please wait for a while for installing process.



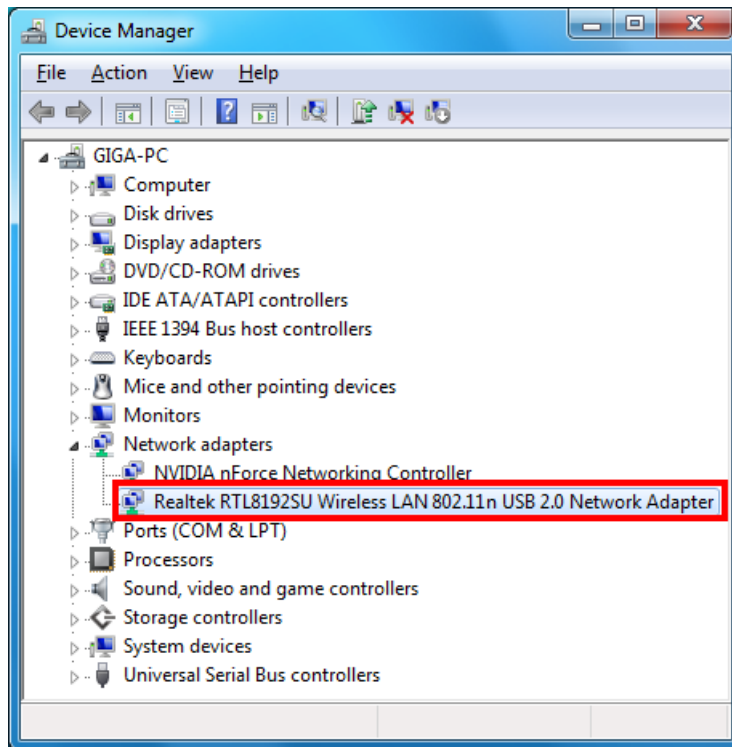
**Step7:** After Wizard has finished the installing, choose “**Yes, I want to restart my computer now**” before you can use the utility. And then, click **Finish** to complete the setup.



**Step8:** When Utility setup is completed, a shortcut of Wireless LAN Utility will appear in the computer’s desktop. Double click the shortcut and start using the WLAN USB adapter.

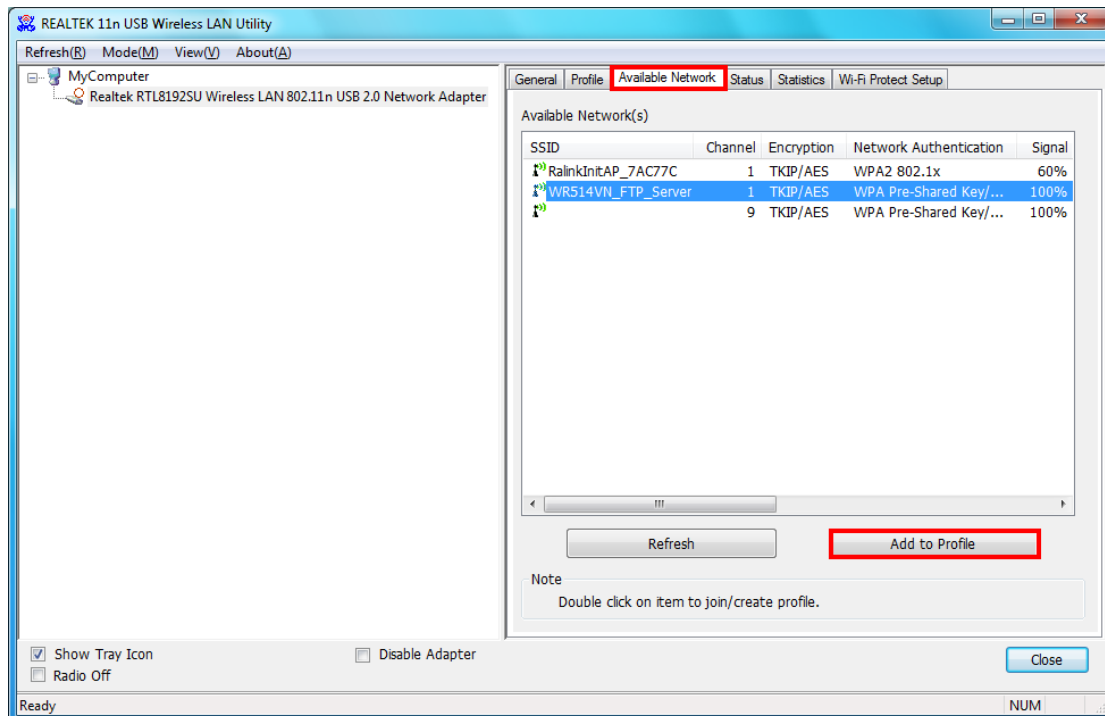


To check if Wireless PCI card is properly installed, you can right-click **Computer** → choose **Properties** → click **Device Manager**.



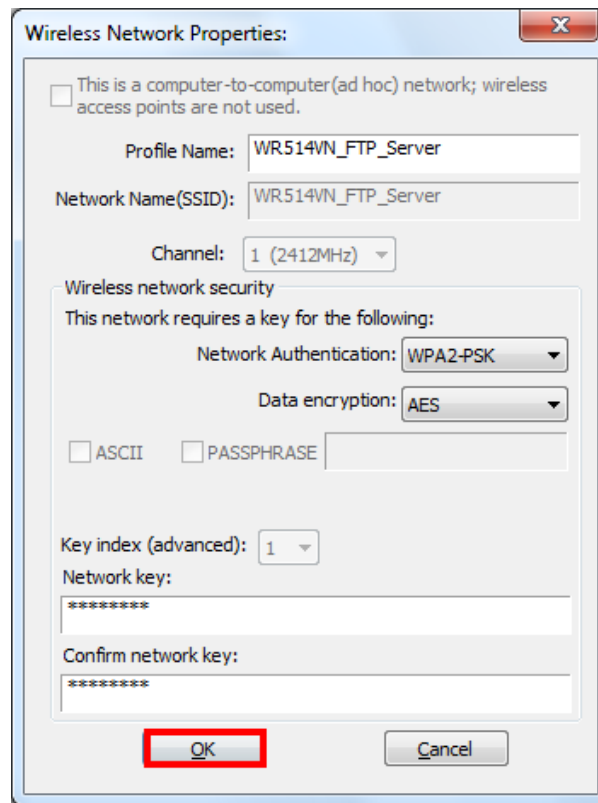
### [Configuring Wireless Network]

**Step 1:** Open the Wireless Utility and go to “**Available Network**” tab, double-click the network which you want to connect or click “**Add to Profile**” button to continue.

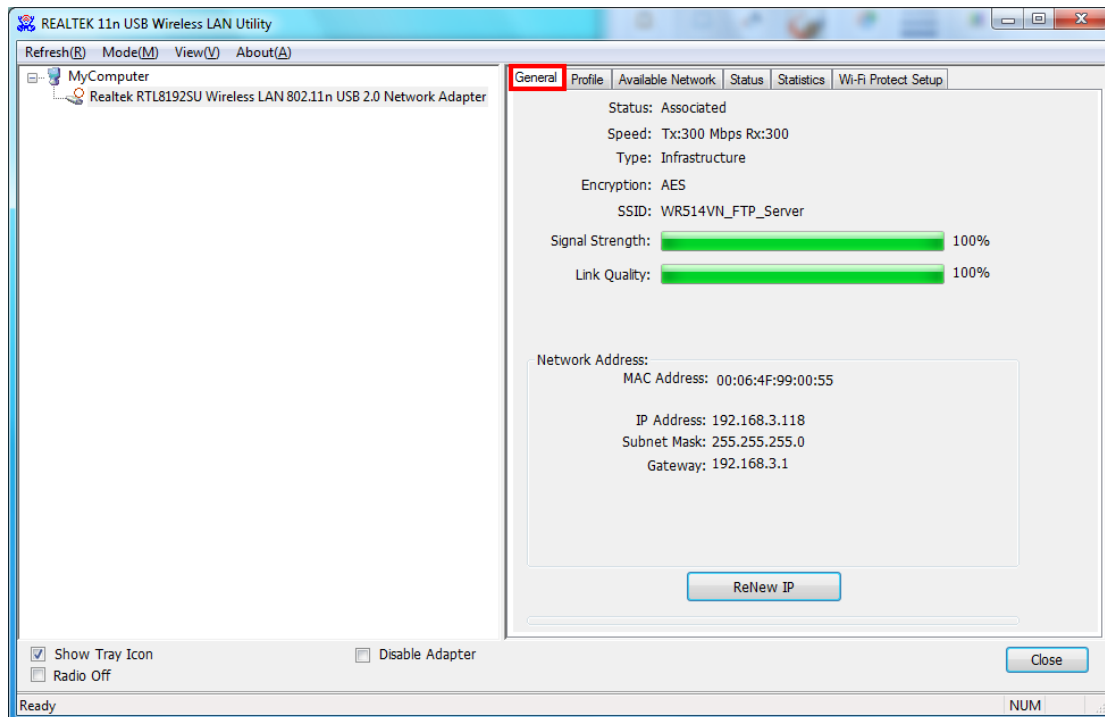


**Step 2:** The Wireless network properties will be displayed, enter the network key if it is

necessary. And click "OK" to continue.



**Step 3:** In the "Profile" tab, you can see the available network is listed.



**Step 4:** And now, you can browse your Internet Explorer to surfing the web.

Realtek - Windows Internet Explorer

http://www.realtek.com/

Realtek

Select Language  
English

About Realtek | Products | Press Room | Downloads | Investor Relations | Employment

Home | Contact Us | FAQs | Site Map

**Sound and Vision Reality**  
Realtek Computer Peripheral & Multimedia Solutions

7.1 HD Audio Codec

**Product Hits**

- ALC889**  
7.1+2 Channel HD Audio Codec with Content Protection
- RTL8186/RTL8186P**  
Dual-Band Tri-Mode Wireless Gateway SoC
- RTL8211C/RTL8211CL**  
Integrated 10/100/1000 Gigabit Ethernet Transceiver

**Search**

**News**

- Realtek Announces the World's First Single-Chip Gigabit Ethernet Controller Draft IEEE 802.3az Standard Solution
- Realtek Announces the RTD1073 High-Performance Digital Media Processor with Hardware Decoder for All Mainstream HD AV Formats

**Quick Links**

- RTL810X/RTL8130/ RTL8139(A/B/C/D) PCI Series Drivers
- HD Audio Codec Driver
- Stock Quote from TSE (code: 2379)
- Monthly Revenue Update
- M.O.P.S.

About Realtek | Products | Press Room | Downloads | Investor Relations | Employment | Contact Us | FAQs | Site Map

Contact the [Webmaster](#) about any website related problems.  
Best viewed at 800x600 with [IE 6.0](#) or [Netscape 7.02](#) or [Mozilla Firefox 1.0.6](#) or higher.  
©2009 Realtek Semiconductor Corp. All rights reserved.

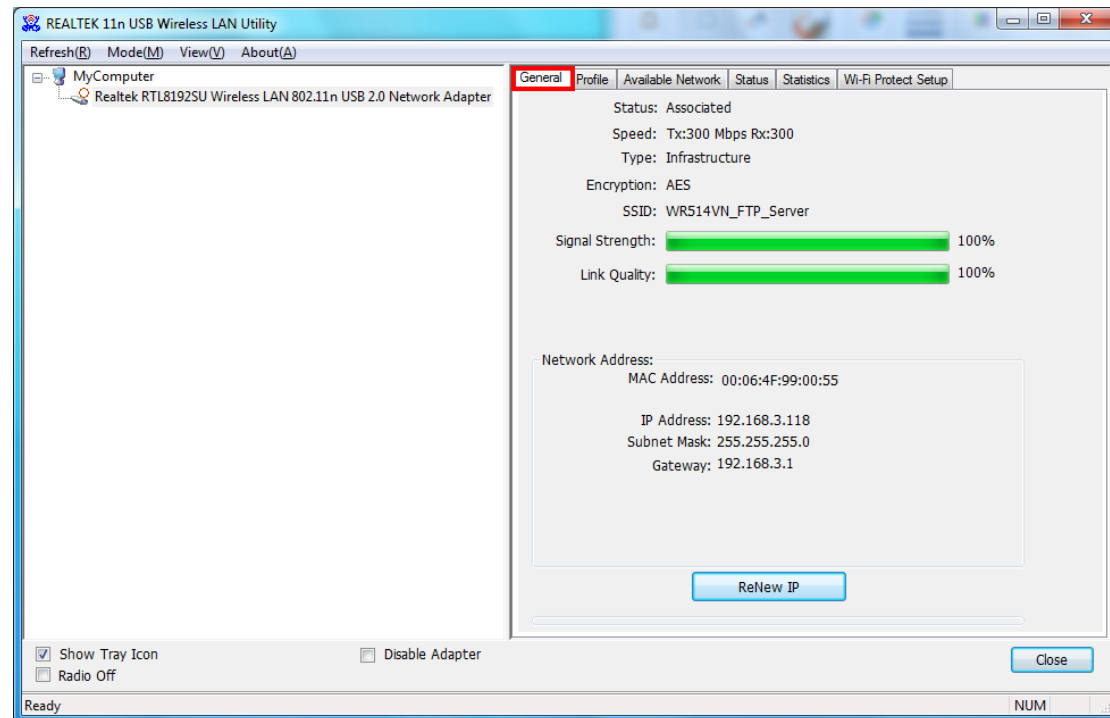
Done Internet | Protected Mode: On 100%

### 3. Wireless LAN Utility

The Wireless LAN Utility is an application that helps you to configure the USB Wireless LAN adapter and monitor the link status and statistics during the communication process.

#### 3.1 General

In the “**General**”, you can immediately monitor the link status.



**Status:** Current connection status

**Speed:** Show current transmit rate and receive rate.

**Type:** Network type in use.

**Encryption:** Encryption type in use.

**SSID:** The Current AP name of user type.

**Signal Strength:** Receive signal strength

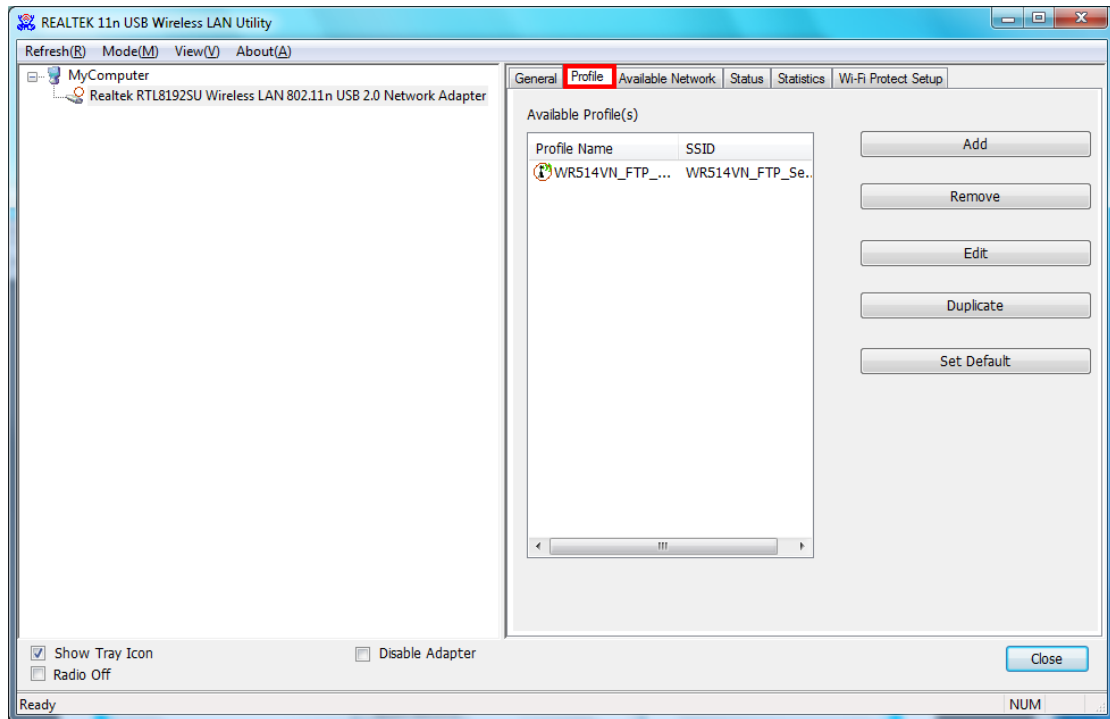
**Link Quality:** Display link quality strength

**Network Address:** Display the current connection’s MAC Address, IP address, Subnet Mask, and Gateway information.

Click “**ReNew IP**” button to refresh the current AP.

#### 3.2 Profile

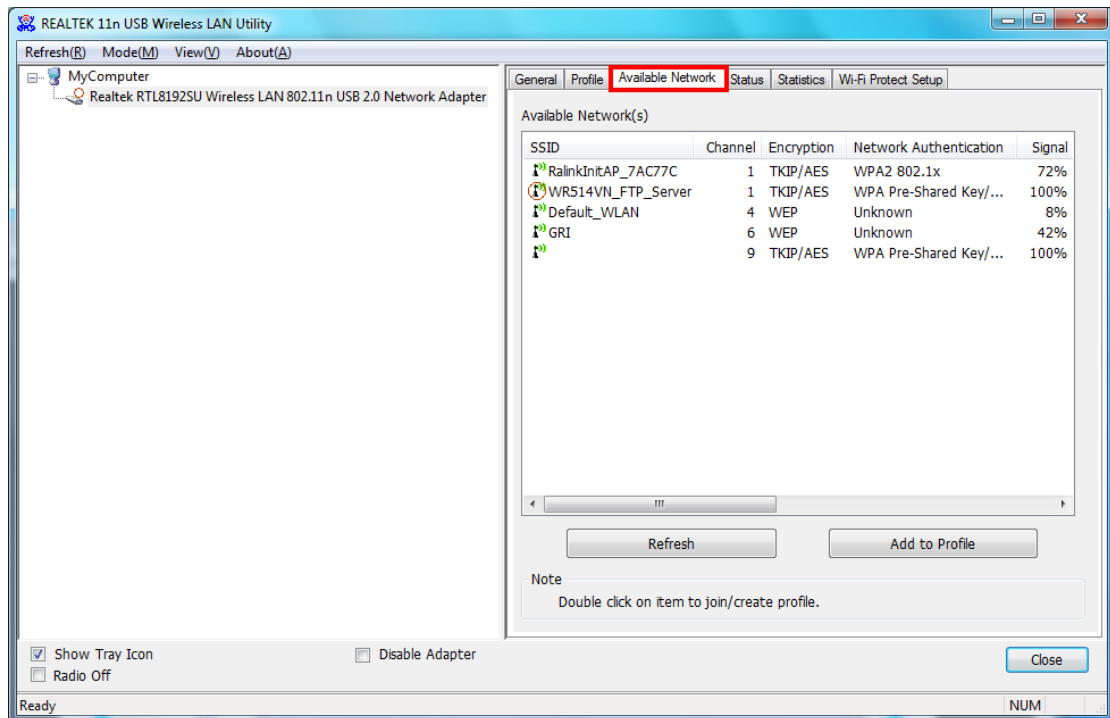
In the “**Profile**”, you can view the current using Available Point(s). You can add, remove and edit the current Available Point(s). Also you can duplicate the AP or Set current AP as Default.



### 3.3 Available Network

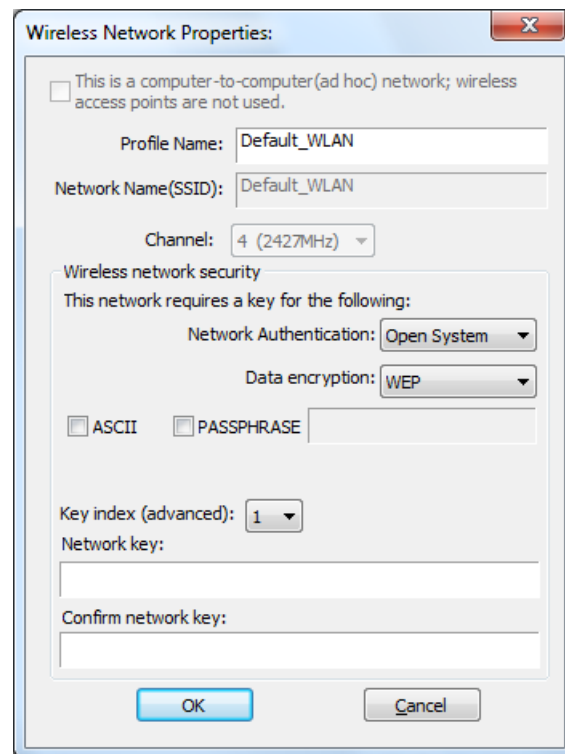
The “**Available Network**” shows all Access Points, Routers or Adapters nearby when operating in Ad-Hoc mode.

Click “**Refresh**” button to collect the SSID and Channel information of all the wireless devices nearby. If you want to connect to any device on the list, double-click the item on the list, and the card will automatically connect to the selected device.



If you want to add one Access Point to the profile, click “**Add to Profile**” button. The [Wireless](#)

network properties windows will display. You can configure your Wireless Network Security for the card.



#### [Network Authentication]

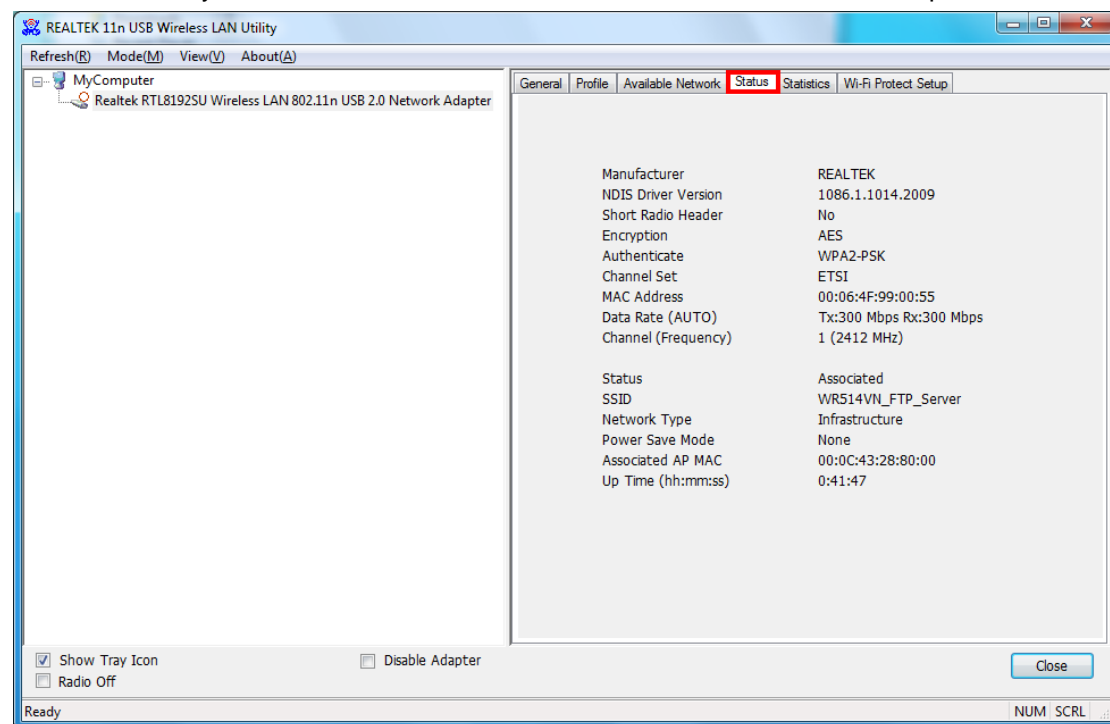
- **Open System:** No authentication is needed among the wireless devices.
- **Shared Key:** Only Wireless device using a shared key (WEP Key identified) is allowed to connecting each other. Setup the same key as the wireless device which the card intends to connect.
- **WPA-PSK:** It is a special modem of WPA for home users without an enterprise authentication server and provides the same strong encryption protection.
- **WPA2-PSK (for WPA2 Personal):** This option will be present only if the wireless network adapter and its driver support WPA2.
- **WPA 802.1X:** 802.1x authentication is required in WPA. In the 802.11 standard, 802.1x authentication was optional.
- **WPA2 802.1X:** WPA2 is the next-generation Wi-Fi security standard, combining the most powerful authentication and encryption techniques to protect wireless networks from unauthorized use. Based upon the recently-ratified IEEE 802.11i standard, WPA2 adds the Advanced Encryption Standard (AES) to the original WPA specification to provide the greatest levels of network security available. The National Institute of Standards and Technology (NIST) advocate the use of AES security to protect sensitive digital information on government networks.
- **WEP 802.1X:** Accepts WEP clients and the encryption key is obtained dynamically through 802.1x.

## [Data Encryption]

- **Disabled**: Disable the WEP Data Encryption.
- **WEP**: Enabled the WEP Data Encryption. When the item is selected, you have to continue setting the WEP Key Length & the key Index.
- **TKIP**: Enable the TKIP Data Encryption. When the item is selected, you have to continue setting the Network Key & Confirm network key.
- **AES**: Enabled the AES Data Encryption. When the item is selected, you have to continue setting the Network Key & Confirm network key.
- **Passphrase**: Enter a passphrase (password phrase) of up to 63 case-sensitive printable characters.
- **Network Key**: The keys are used to encryption data transmitted in the wireless network. Fill in the text box by following rules below:
  - **64-bit**: Input any 5 ASCII characters or 10 digit Hex values (in the “A-F”, “a-f”, and “0-9” range) as the encryption keys. For example: “0123456aef”
  - **128-bit**: Input any 13 ASCII characters or 26 digit Hex values (in the “A-F”, “a-f”, and “0-9” range) as the encryption keys. For example: “01234567890123456789abcdef”
- **Confirm Network Key**: Re-type again the Network key in this text box.
- **Key Index (Advanced)**: The maximum of key index is 4.

## 3.4 Status

In the “**Status**”, you can view the current link status of USB Wireless LAN adapter.

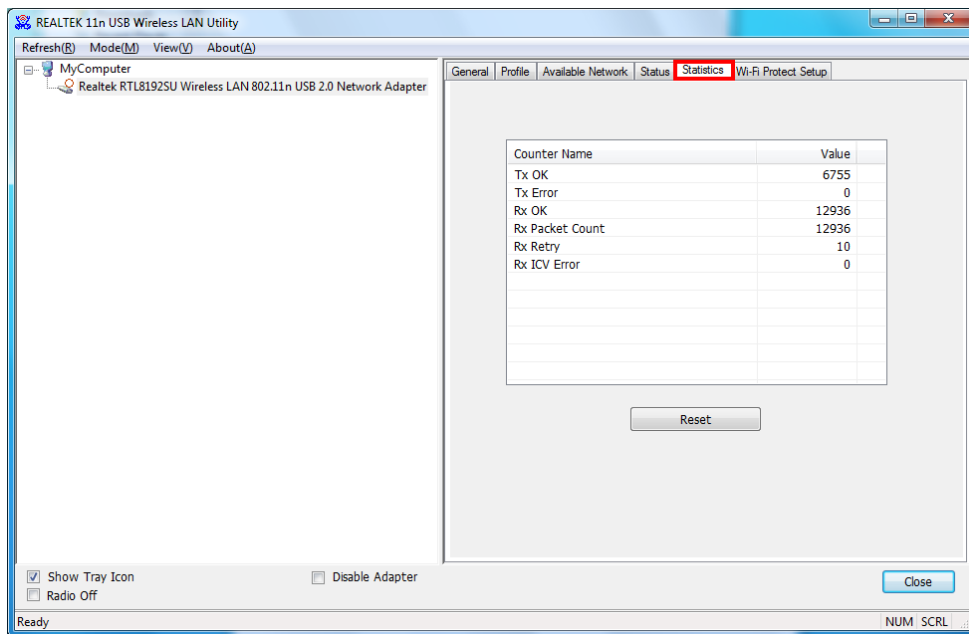


## 3.5 Statistics

In the “**Statistics**”, you can get the real time information about the packet transmission and

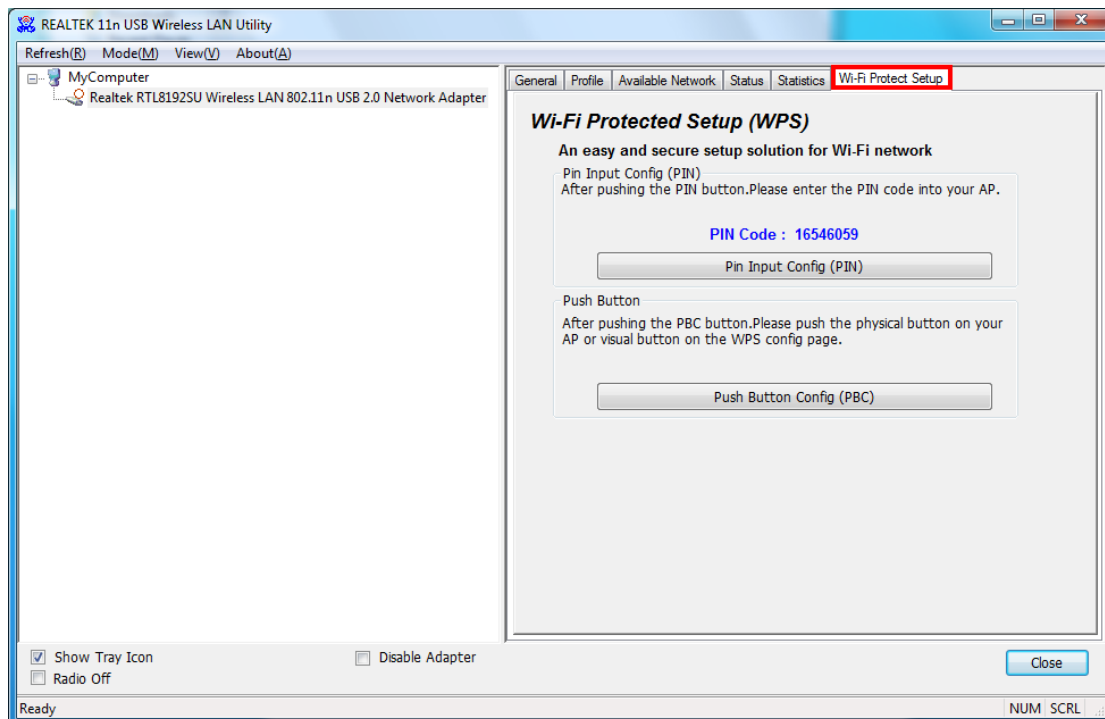


receiving status.



### 3.6 Wi-Fi Protect Setup

In the “**Wi-Fi Protect Setup**”, you can setup the Wi-Fi network more easily and secure. . There are two methods for you: **Pin Input Config (PIN) Method** & **Push Button Config (PBC) Method**”. Select one of following methods to setup your AP.



The primary goal of Wi-Fi Protected Setup (Wi-Fi Simple Configuration) is to simplify the security setup and management of Wi-Fi networks. This Wireless LAN utility as an Enrollee or external Registrar supports the configuration setup using PIN configuration method or PBC

configuration setup using PIN configuration method or PBC configuration method through an internal or external Registrar.

**Pin Input Config (PIN):** Start to add to Registrar using PIN configuration method. IF STA Registrar, remember that enter PIN Code read from you Enrollee before starting PIN.

**Push Button Config (PBC):** Start to add to AP using PBC configuration method.

## 4. Soft-AP Function

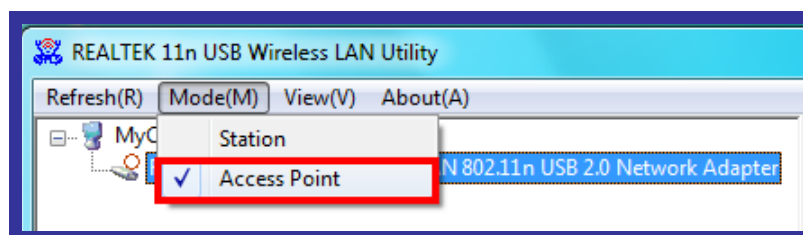
Except becoming a wireless client of other wireless access points, this USB Wireless LAN utility can acts as a wireless service provider. You can switch the operating mode to “**Access Point**” mode to simulate the function of a real wireless access point by software, and all other computers and wireless devices can connect to your computer wirelessly, even share the internet connection you have.

To the Wireless LAN USB Adapter to bridge your wired and wireless network, the following requirements must be met :

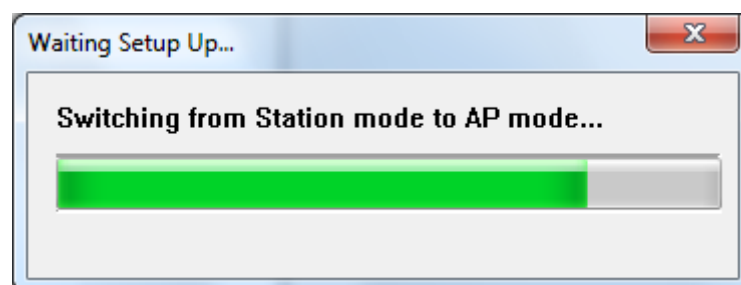
1. The Wireless LAN USB Adapter must be installed on a computer connected to the wired network.
2. Either configure network sharing (refer to the appendix for an example) or bridge the two interfaces (wireless and wired) on the computer.
3. Set the wireless station’s IP address to be in the same subnet as the computer in which the Wireless LAN USB Adapter is installed.

### 4.1 Swith to AP Mode

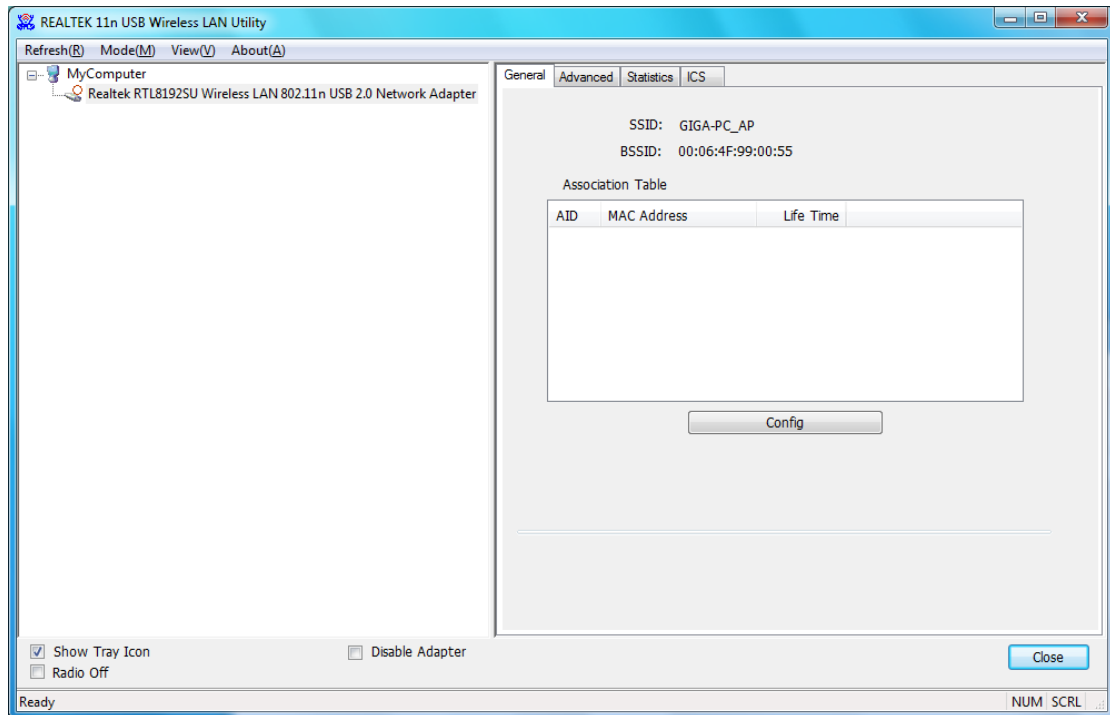
Select “**Access Point**” from **Mode(M)** tab to make the Wireless LAN USB adapter act as a wireless AP.



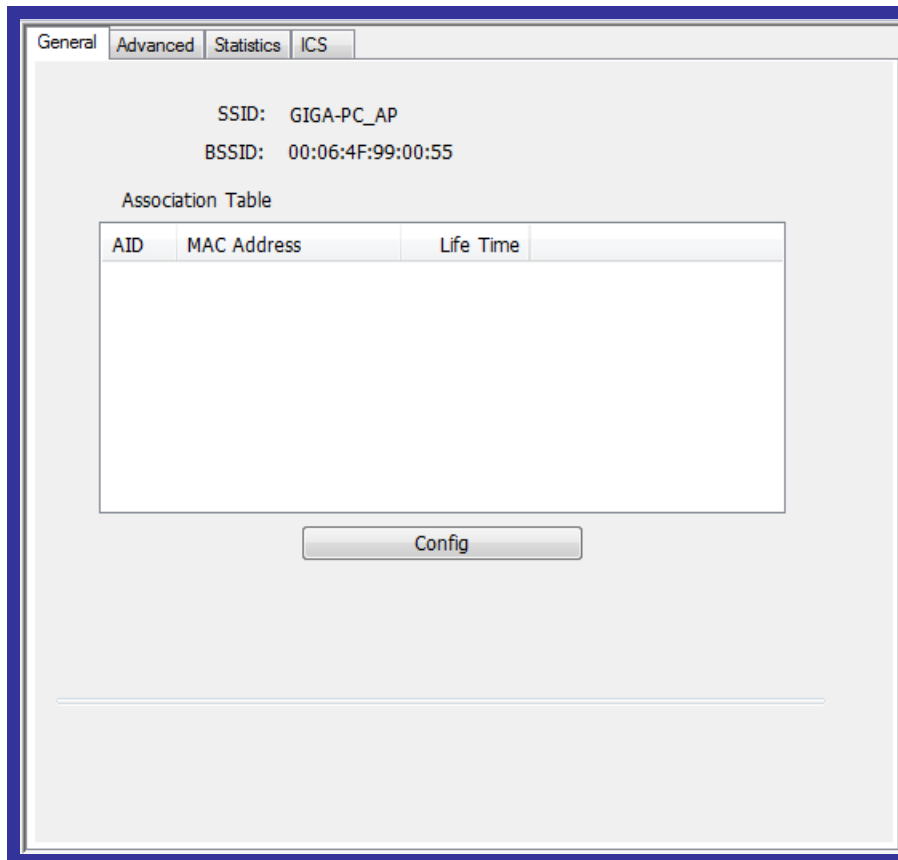
After you select “**Access Point**” mode, the Wireless LAN USB adapter available options will change.



You will see the basic configuration menu of the AP function:



## 4.2 General



**SSID:** The SSID is the unique name shared among all points in your wireless network. The name must be identical for all devices and points attempting to connect to the same network. It

shows the current SSID setting of the Wireless USB adapter.

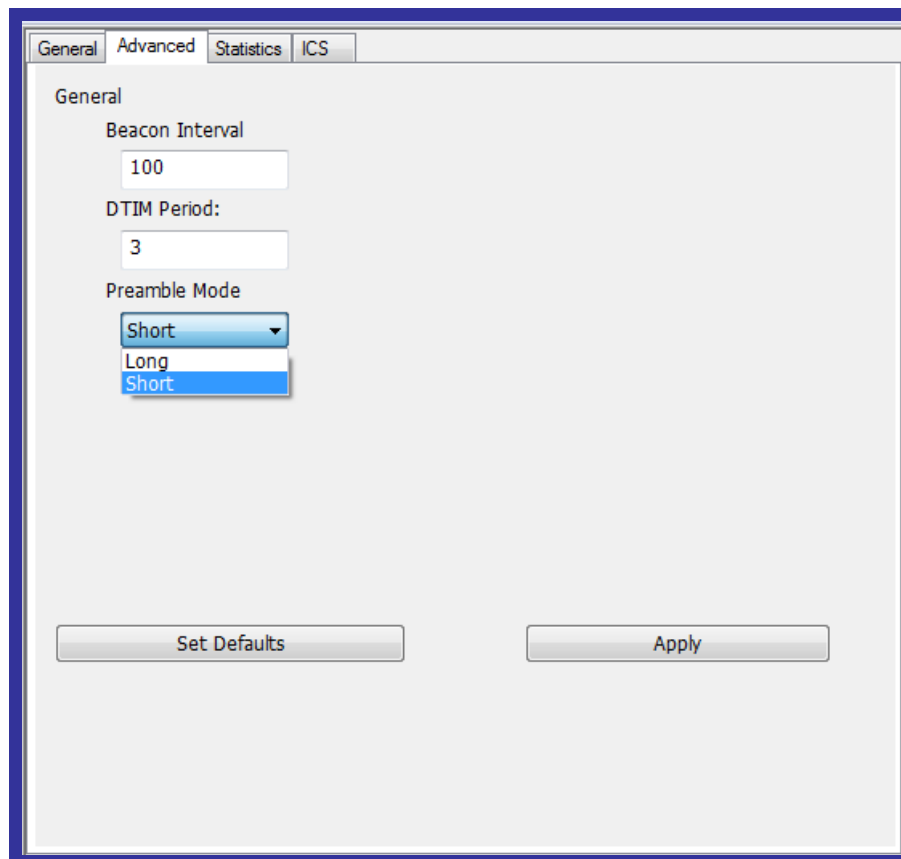
**BSSID:** It shows the current BSSID's MAC address.

**AID:** Raise value by current connection.

**MAC Address:** The station MAC address of current connection

**Life Time:** The status of current connection.

### 4.3 Advanced

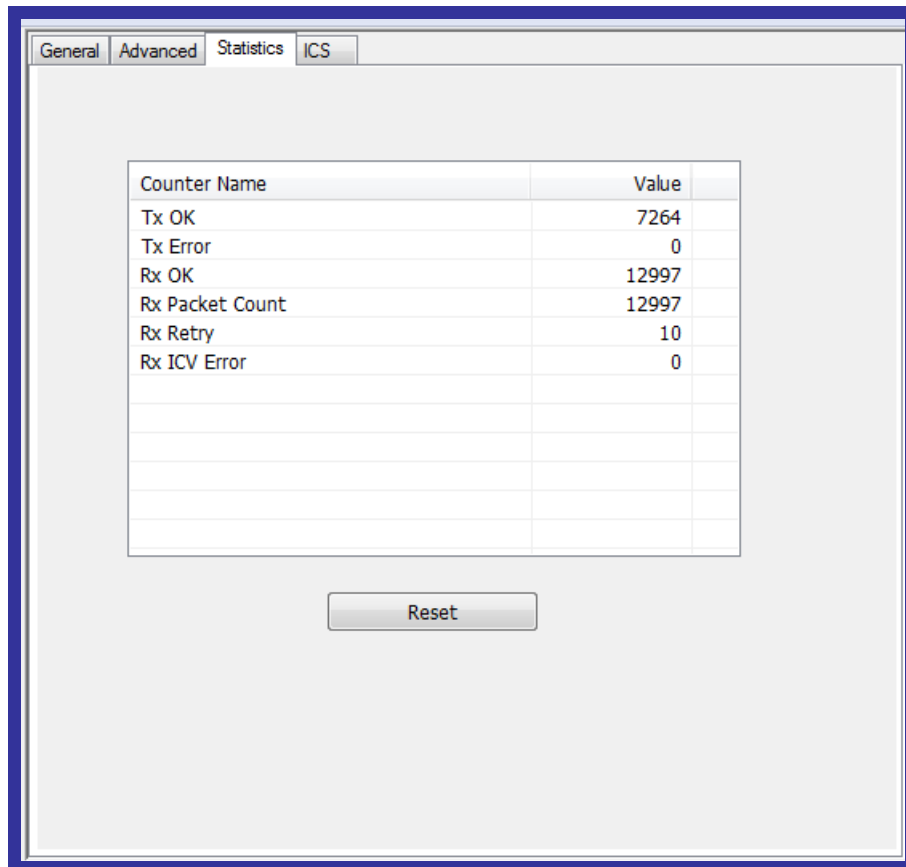


**Beacon Interval:** The time between two beacons. (The system default is 100 ms.)

**DTIM Period:** DTIM is a countdown informing clients of the next window for listening to broadcast and multicast messages. **3** is the default setting.

**Preamble Mode:** This function will show up when Ad-hoc network type be selected. A preamble is a signal used in wireless environment to synchronize the transmitting timing including Synchronization and Start frame delimiter. Select from the pull-down menu to change the Preamble type into **Long** or **Short**.

### 4.4 Statistics

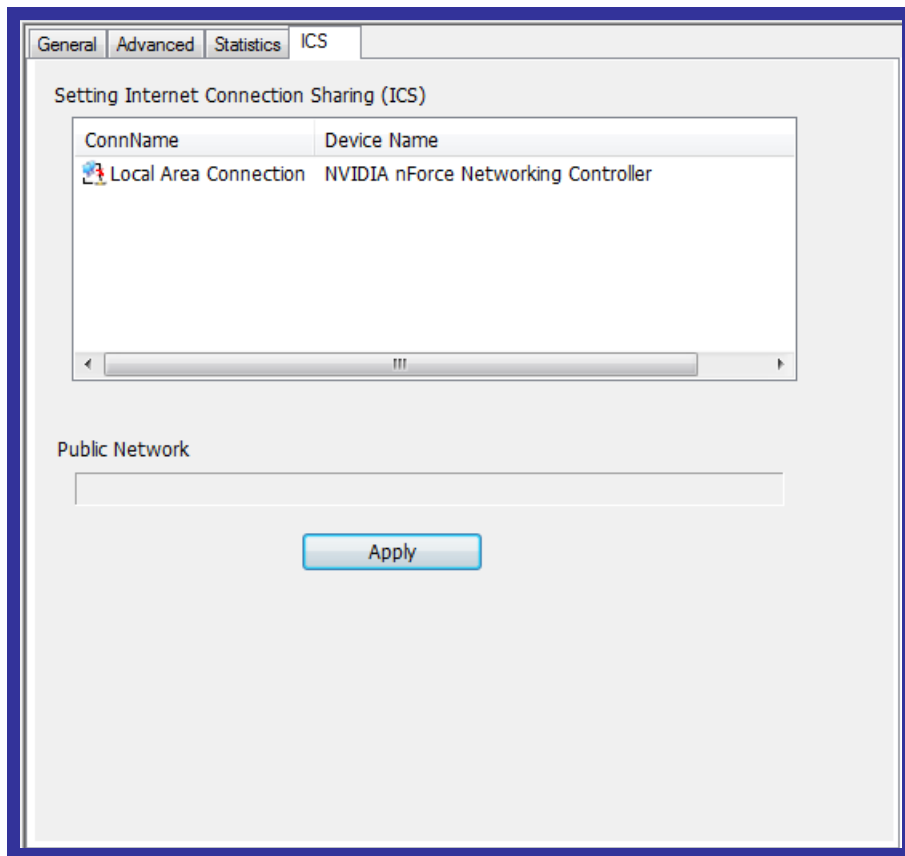


If you want to know detailed information about how your software access point works, you can view the statistics of the access point.

You can click “**Reset**” button to reset all counters to zero.

#### 4.5 ICS

The **Internet Connection Sharing (ICS)** function allows wireless clients to share a single internet connection. In the setup, Wireless USB adapter automatically assigns a virtual IP address to each of the wireless clients. (Please make sure your local network connection is connecting.)



## Free Manuals Download Website

<http://myh66.com>

<http://usermanuals.us>

<http://www.somanuals.com>

<http://www.4manuals.cc>

<http://www.manual-lib.com>

<http://www.404manual.com>

<http://www.luxmanual.com>

<http://aubethermostatmanual.com>

Golf course search by state

<http://golfingnear.com>

Email search by domain

<http://emailbydomain.com>

Auto manuals search

<http://auto.somanuals.com>

TV manuals search

<http://tv.somanuals.com>