

*Seeds not included

AeroGarden™

Plant & Grow Your Own Seeds*

MASTER GARDENER

GUIDE

English



Quick, Plug & Grow™ Planting with Your Own Seeds

Download from www.Somanuals.com. All Manuals Search And Download.

C O N T

Introduction

Introduction	3
Additional Supplies Needed	4

Designing Your Garden

Plant Type.....	5
Plant Height.....	5
Nutrients.....	6
Life Span.....	6
Plant Habit & Layout.....	7

Building a Grow Pod

Number of Seeds.....	8
Prepare Pod Labels	8
Place Seeds & Grow Sponge	9
Attach Pod Labels	10
Place Stem Cuttings	11

Planting Your Garden

Plant Grow Pods.....	13
----------------------	----

Feeding Your Garden

Choose a Nutrient Regime.....	14
Nutrient Feeding Schedule Options.....	15
Add Nutrient(s).....	16
Signs of Stress.....	16

ENTS

Tending Your Garden

Remove Domes	17
Add Water and Raise Lamp Hood (<i>Light[s]</i>)	18
Thin Plants	18
Pollinate Plants.....	19
Prune Plants.....	20
Keep Your Garden Healthy.....	23
Support Plants	23

Harvesting Your Garden

Leafy Greens	26
Bunching Herbs	27
Branching Herbs	27

Appendix

Troubleshooting	28
-----------------------	----

Images of the AeroGarden Classic and AeroGarden 3 are shown throughout this guide, but instructions apply to all AeroGarden models.

You will occasionally need to reference your *Quick Start Guide* when planting and growing a Master Gardener Kit.

If you no longer have your model's *Quick Start Guide*, you can obtain the latest version at www.aerogardensupport.com

INTRODUCTION



Each *Master Gardener Kit* is designed for AeroGardeners who want to plant their own seeds or root their own cuttings. Each kit includes the supplies needed to plant and grow one to three custom gardens.

While the AeroGarden provides the ideal environment for growing plants, there are many decisions you need to make that will impact the outcome of your garden. This Guide will assist you in deciding what to plant, how to plant and how to care for your plants once they are growing. *We recommend that you read the entire Guide before starting your Garden.*

NOTE: Planting an AeroGarden with your own seeds or cuttings is a bit of an experiment. We hope your efforts will be successful and you enjoy the discovery process. To get started, refer to "Designing Your Garden" for helpful guidelines. Contact a garden center, hydroponic shop, or university for answers to more in-depth questions.

Additional Supplies Needed

In addition to what is included in your Master Gardener Kit, there are a few additional items you will need.



An AeroGarden



An Iron



Seeds



Plant Cuttings



A Permanent Marker

Whether this is the first or fifth garden you are planting in your AeroGarden, you will need to reference your Quick Start Guide.

If you have planted a garden in your AeroGarden prior to this one, please refer to *"Replanting Your AeroGarden"* in the *Quick Start Guide* before you proceed.

If you no longer have your model's *Quick Start Guide*, you can obtain the latest version at www.aerogardensupport.com

DESIGNING YOUR GARDEN

SELECTING PLANTS

The following guidelines will help you plant and grow a thriving indoor garden. Take the time to plan your Garden and you'll reap the rewards of healthy plants and bountiful harvests.

Plant Type

While we encourage you to try growing a variety of plant types in your AeroGarden, there are a few that will not do well in an aeroponic system.

Subterranean plants, such as carrots, beets, potatoes or peanuts should not be planted in an AeroGarden.

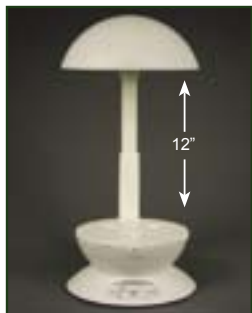
In addition, plants that require very dry conditions and have very low water requirements, such as cactus and succulents, will not thrive in an AeroGarden.



Plant Height

The maximum height of most AeroGarden *Lamp Hoods* is 12" from the *Grow Surface* (24" for *Deluxe, PRO²⁰⁰ and AeroGarden 6 Elite+ models*). It is important to select plants that will not grow taller than this – or to choose plants that can be pruned to stay within this height restriction, such as basil.

When choosing seeds, look for dwarf or miniature varieties.



Plant Height *(Continued)*

If you decide to grow a garden with a variety of different plants, you will also need to consider their relative heights. Try to grow plants that will be about the same height as they mature. You may be able to prune some plants in your Garden to achieve this. Using plants that grow at the same rate lets you adjust the *Lamp Hood* so plants all receive the optimal amount of light.



Plant a garden with plants that have similar growth rates and heights, like Salad Greens (shown).

Nutrients

Choose plants that have similar nutrient requirements. For example, mixing plants with fairly low requirements (such as lettuces) with plants that have much higher requirements (such as basil) is not recommended. There are two (2) different types of nutrients to choose from in a Master Gardener Kit, and more specific nutrient guidelines are provided in the "Feeding Your Garden" section of this Guide.

Life Span

Try to choose plants that have similar life spans for your Garden. For example, dwarf tomatoes and basil are a great flavor combination, but would be hard to grow in the same AeroGarden. Basil will be nearing the end of its growth cycle just as dwarf tomatoes are starting to ripen!

Plant Habit & Layout

Some plants are bushy, others feathery, some grow straight, others branch out. As you plant your Garden, think about shape and growth habits of plants. You may want to put a feathery leafed plant in front where it can be seen and use the back row for plants that grow straight or bushy. Even after you've planted your Garden, you can remove *Grow Pods* and rearrange them. (*Just be gentle with the roots!*)

Horizontal Spreading

If you grow plants that have extensive branching or will spread horizontally, you may want to leave some *Grow Surface Openings* empty. Example: for 3-Pod AeroGardens, plant only 1 *Grow Pod* for tomatoes and peppers and leave the remaining 2 *Grow Surface Openings* empty; for 6-Pod models, plant 3 *Grow Pods* and leave 3 openings empty; and for 7-Pod models, plant 3 *Grow Pods* and leave 4 openings empty. This will give plants room to grow and assure they get the light they need.

Be sure to cover unplanted *Grow Surface Openings* to inhibit algae growth. Our *Plant Spacers* are a perfect fit and can be re-used in any Garden. *Plant Spacer Kits* include 6 spacers and can be purchased at www.aerogardensupport.com.



Or, choose a material that will stand up to moisture, such as aluminum foil or a plastic milk jug cap.

**Quick Start Guides available at:
www.aerogardensupport.com**

BUILDING A GROW POD

Number of Seeds

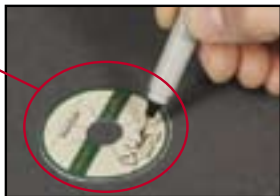
It is important to plant extra seeds to ensure success. For larger seeds and fruiting plants, sow only a few extra seeds. Increase number of seeds as seed size decreases and for plants that grow in bunches, such as chives. Typically, 6 seeds per *Grow Pod* works well.

Prepare Pod Labels

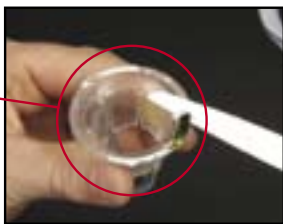
Here are a few preliminary steps that will help the *Grow Pod* building process go smoothly.

- Preheat iron to a moderate temperature (between silk and cotton settings on most irons, 300°- 400°F). **Do not use steam.**

- Write the name of seeds or plant cutting on *Label(s)* with permanent marker. Doing this before you start planting prevents accidental mislabeling of *Grow Pods*.



- If you are re-using a *Split-Apart Basket*, be sure to scrape residue from previous *Label* off the surface. Remnant glue will prevent new *Label* from adhering.



Place Seeds & Grow Sponge

- Place seeds into *Dibble* (hole located on end of *Grow Sponge*).



- Insert *Grow Sponge* into *Split-Apart Basket*.



- Make sure *Grow Sponge* base rests in bottom of *Split-Apart Basket*.



Attach Pod Labels

The *Pod Label* reminds you of planting date and what you planted, and also promotes germination and inhibits algae growth. Be sure to fill out and apply *Pod Labels*.

IMPORTANT!

If you are planting SEEDS in your *Grow Pods*...

Attach *Pod Labels* AFTER *Grow Pods* are assembled and seeds are in place.

If you are planting CUTTINGS in your *Grow Pods*...

Snap *Split-Apart Baskets* together and attach *Pod Labels* BEFORE planting cuttings.

Remember: Preheat iron to a moderate temperature (between silk and cotton settings on most irons, 300°-400°F). **Do not use steam.**

Attach Pod Labels

- Place *Pod Label* on top of *Split-Apart Basket*.
- Iron for a total of 10 seconds as follows:
 - 5 seconds with iron in one place.
 - 5 seconds moving *Grow Pod* around outside edge of iron – to ensure *Label* is secure.

WARNING: Burns can occur from touching hot metal parts, hot water or steam. Extreme caution should be used near children. Never leave iron turned on or unattended, especially when children are present.

Place Stem Cuttings

Using stem cuttings is a common method for propagating many plant varieties, but it does require a bit of care on your part. A number of vegetables and shrubs root very easily, but stem cuttings from tree species can be difficult to root. We have found that some difficult species may be stimulated to root by treating them with root-promoting compounds.

The following steps describe how to start plants from both herbaceous (*non-woody plants such as tomatoes, peppers, chrysanthemum and dahlias*) and softwood cuttings (*soft, new growth from plants such as lilacs, roses, and rhododendron*). It is best to take your cuttings early in the morning when it is cool and damp.

*NOTE: Be sure to attach Pod Labels to Split-Apart Baskets **BEFORE** doing the following (see page 10 for instructions).*

Rooting Stem Cuttings

- Use scissors or a razor-blade that has been sterilized in isopropyl alcohol (rubbing alcohol) to cut the stem 4" to 6" from its tip.
- Before placing cutting in *Grow Sponge*, remove any flowers, buds or leaves from the lower half of stem at this time.

If using a root-promoting compound, apply it at this time.
Be sure to follow all manufacturer's recommendations.

- Make a ½" to 1" deep slit across the top of *Grow Sponge*.



- Moisten *Grow Sponge* and insert cutting 1/3 to 1/2 of its length into *Grow Sponge*.
- Carefully push *Grow Sponge* (with cutting in place) through *Pod Label* and into *Split-Apart Basket*.
- Insert assembled *Grow Pod* into *Grow Surface Opening* (see page 13 for instructions).
- Repeat above steps with each cutting and *Grow Pod*.



With all *Grow Pods* placed in *Grow Surface*...

- Completely cover *Grow Pods* using a clear plastic bag (1-gallon size), or plastic container(s) to maintain high humidity levels. Cover all plants in groups or individually – just be sure each *Grow Pod* is covered. Mist cuttings with water once or twice daily to maintain humidity levels.
- Do not add nutrient tablets until you see roots extend from bottom of *Grow Sponges*. Once roots extend from *Grow Sponges*, start adding nutrients (see pages 14-15 for feeding recommendations).
- Plants are sensitive to pH levels. To eliminate potential concerns regarding pH levels, we recommend using distilled water UNTIL you begin adding nutrients.
- Continue to monitor cuttings and water level in *Bowl*. Within a few weeks you should start to see roots extend from the *Grow Sponges*.
- Check cuttings regularly and remove any unhealthy (rotten or dried up) plants. Use these plants as a guide to determine if the growing environment is too moist or too dry.

PLANTING YOUR GARDEN

Planting a custom *Grow Pod* is the same as planting a *Seed Pod* from any *AeroGarden Seed Kit*. We recommend recording the planting date and number of seeds planted in a notebook or on a model-specific Gardener's Log (located at www.aerogardensupport.com). This will be a great reference when planting future Gardens.

Plant Grow Pods

- Insert *Grow Pods* into *Grow Surface Openings*.
All Grow Surface Openings should contain a Grow Pod or be covered by a moisture-tolerant covering (see page 7).
- **Seeds Only** - Place a *Dome* on each *Grow Pod*.



Make sure that...

- *AeroGarden Bowl* has water up to "*Fill to Here.*"
- Use room-temperature water. Very hot or very cold water will hurt your plants.
- For Seeds - use municipal tap, bottled or purified water.
For Cuttings - use distilled water until you begin using nutrients, then use municipal tap, bottled or purified water.
Well or softened water SHOULD NOT be used. The extra minerals in these sources may be harmful to aeroponically grown plants.
- *Lamp Hood* is at the lowest setting on *Lamp Arm*.

See your model's Quick Start Guide for detailed instructions on adding water and lowering *Lamp Hood*. If you no longer have it, you can find the latest version of your model's Quick Start Guide at www.aerogardensupport.com.

FEEDING YOUR GARDEN

Each Master Gardener Kit comes with two different types of nutrient tablets to meet the needs of a variety of plant types. The amount of nutrients in your Garden increases with tablet size.

Each tablet also contains ingredients that will keep the water in your AeroGarden at a pH level that is ideal for aeroponically grown plants.

Choose a Nutrient Regime

Most gardens will need a combination of small and large nutrient tablets. If you are planting cuttings, you will not have to add nutrients until you see roots extend from *Grow Sponges*. Since we don't know what's growing in your AeroGarden, we can only offer some guidelines for deciding which tablets to use.

"Small" Nutrient Tablets

These tablets should always be used when first planting seeds in your Garden – one (1) for 3-Pod AeroGardens, and two (2) for 6- and 7-Pod models.

Leafy greens (such as lettuces), and woody herbs (such as oregano and thyme), grow best with "Small" nutrient tablet(s) at each feeding for their entire life cycle.

For cuttings, start adding "Small" nutrients when you see roots extend from *Grow Sponges* – one (1) tablet for 3-Pod, and two (2) for 6- or 7-Pod AeroGarden models.

"Large" Nutrient Tablets

Most plant types other than leafy greens and woody herbs need the higher amount of nutrients found in a "Large" nutrient tablet after 4 weeks (the third feeding.) Mint, basil and parsley are examples of herbs that grow well with "Large" nutrient tablet(s) at each feeding for the remainder of their life cycle.

Nutrient Feeding Schedule Options

The table below shows a suggested feeding schedule based on plant type. Use it as a starting point for selecting a nutrient regime. Keeping a watchful eye on plants will be the best way to learn the ideal nutrient regime.

For cuttings, do not use nutrients until you see roots extended from *Grow Sponges*. Once roots are seen, start with *Set Up* regime, then use the appropriate plant type regime.

Nutrient Recommendations for Plant Types

Options	A	B	C	D
Plant Description	Lettuce/Leafy Greens/ Woody Herbs	Non-Woody Herbs	Fruiting Plants (with upright main stem*)	Fruiting Plants with vines**
Set Up	S (1), S (2)	S (1), S (2)	S (1), S (2)	S (1), S (2)
Week 2	S (1), S (2)	S (1), S (2)	S (1), L (2)	S (1), S (2)
Week 4	S (1), S (2)	L (1), L (2)	L (1), L (2)	S (1), S (2)
Week 6	S (1), S (2)	L (1), L (2)	L (1), L (2)	S (1), S (2)
Week 8	S (1), S (2)	L (1), L (2)	L (1), L (2)	S (1), S (2)
Week 10	S (1), S (2)	L (1), L (2)	L (1), L (2)	S (1), S (2)
Week 12	S (1), S (2)	L (1), L (2)	L (1), L (2)	S (1), S (2)
Week 14	S (1), S (2)	L (1), L (2)	L (1), L (2)	S (1), S (2)
Week 16	S (1), S (2)	L (1), L (2)	L (1), L (2)	S (1), S (2)
Subsequent Feedings	S (1), S (2)	L (1), L (2)	L (1), L (2)	S (1), S (2)

S (1) = 1 "Small" Nutrient Tablet – 3-Pod AeroGarden models only

L (1) = 1 "Large" Nutrient Tablet – 3-Pod AeroGarden models only

S (2) = 2 "Small" Nutrient Tablets – 6- and 7-Pod AeroGarden models only

L (2) = 2 "Large" Nutrient Tablets – 6- and 7-Pod AeroGarden models only

*Such as dwarf tomatoes, chili peppers and eggplant

**Such as squash, strawberries and peas

Add Nutrient(s)

Every 2 weeks you will need to add one (1) nutrient tablet (3-Pod AeroGardens) or two (2) nutrient tablets (6- or 7-Pod AeroGardens) to the Bowl.



For instructions, see "Add Nutrients" (Feed Garden - Basic Feeding) in the Control Panel Features section of your Quick Start Guide.

Signs of Stress

Overnourished

If tips of leaves are brown, your plant is probably getting too many nutrients. At next feeding, you may decrease tablet size or just use 1/2 a tablet (3-Pod AeroGardens), or



1 tablet (6- and 7-Pod AeroGardens). Look for signs of improvement on new plant growth.

NOTE: If browning is severe, you may need to empty all water from Bowl, put in fresh water, and add nutrient tablet(s). If you do this, remember to reset Nutrient Timer. See "Replanting Your AeroGarden" in Quick Start Guide for reset instructions.

Undernourished

Undernourished plants become yellow. If increased yellowing is noticed over time, you may want to add an extra 1/2 tablet, whole tablet or increase tablet size at next feeding.



Signs of improvement will mainly be apparent on new growth. Plants will need time to absorb additional nutrients, so please be patient.

TENDING YOUR GARDEN

A little bit of care for your Garden will ensure rapid growth and healthy plants. This section provides some general guidelines to follow as your Garden grows.

Remove Domes

- Shortly after planting **Seeds** in your garden (4 days to 2 weeks), tiny plants will appear through the hole in each *Grow Pod Label*.

When this occurs, remove *Domes* from each *Grow Pod* and save for your next Garden. Do not remove *Label*.



- Only remove *Domes* from *Grow Pods* with emerging plants.
- When a **Cutting's** roots begin to extend from the *Grow Sponge*, remove plastic bag or container that is covering plant.
- To reduce plant stress, we recommend removing *Domes* or *Cutting Cover* shortly after light(s) turn off or near the end of the light cycle.



Don't let this happen!

If a plant is curled inside *Dome*, it was left on too long. *Immediately remove Dome.*

Never remove *Labels*. They promote germination, inhibit algae growth and identify your plants.

Add Water and Raise Lamp Hood (*Light[s]*)

As your Garden grows, it's important to keep water in the *Bowl* of your AeroGarden, and 1-2" (2.5-5cm) of space between the top of plants and the light(s). For instructions, see "*Add Water Using a Spouted Container*" and "*Raise Lamp Hood (Light[s])*" sections in your model's *Quick Start Guide*.

**Quick Start Guides available at:
www.aerogardensupport.com**

Thin Plants

Herbs, lettuces, and plants that grow in bunches (such as chives) do not require thinning. However, with broad-stemmed varieties, such as fruiting plants, it is best to thin plants as described below.

- When plants are about 1" (2.5cm) tall, check each *Grow Pod* for multiple plants. Using scissors, snip the smallest plants at the stem base, leaving ONE healthy plant in each *Grow Pod*.



- Thinning seedlings ensures the remaining plant in each *Grow Pod* has room to grow, gets enough nutrients and water, and produces many, many fruits.

! *Be sure to cut, not pull, the extra seedlings to avoid damaging roots of the remaining plant in each *Grow Pod*.*

Pollinate Plants

The table below shows some common plant types and recommended methods for hand pollination.

For plants not listed below, you may need to do some additional pollination research – the internet and seed suppliers are good sources of information.

Pollination Methods for Common Garden Plants

Pollination Method	Plant Examples	How to Hand Pollinate (After Flowers Appear)
Self-pollinating	Legumes (such as peas and beans) and English cucumbers	No hand pollination necessary
Shaking	Dwarf tomatoes and peppers	Shake plant gently every other day when the lights are on.
	Eggplant	Shake plant vigorously every other day when the light(s) are on. <i>An electric toothbrush works well.</i>
Move male pollen to female flower	Pumpkin, squash, watermelon and common cucumbers	Use paintbrush to move pollen from male flower to female flower. Pollinate when the lights are off.

HELPFUL HINT: If you find your Garden is producing many flowers but no fruit, chances are you need to pollinate or change your pollinating method. Dead blossoms on the Grow Surface are a good indicator that your chosen pollination method is not working.

Dwarf tomato plant being pollinated by gently shaking.



Prune Plants

Your Garden may need pruning to keep plants at about the same height and to control growth. Use garden shears or scissors to prune. Here are some general guidelines on pruning various plant types.

Fruiting Plants with Upright Main Stem (First prune) *(such as dwarf tomatoes, peppers, and eggplant)*

Early pruning of this plant helps strengthen the main stem and encourages plant to branch out. A strong plant with many branches will be able to bear the weight of much fruit without tipping over.

- From base of plant, follow main stem up past first 5 branches.



- Cut main stem just above 5th branch.



Fruiting Plants with Upright Main Stem (Ongoing)

Fruiting plants grown in an AeroGarden require ongoing pruning to control plant height and spreading.

Controlling Height

Use scissors to cut branches that are growing into light(s). Follow branch to where it meets another branch – make cut just before this junction.



Continued on next page

Prune Plants *(Continued)*

Fruiting Plants *(Ongoing)* *(Continued)*

Controlling Spreading

Use scissors to cut branches that hang outside the edge of *Lamp Hood*. Make cut so branch is no more than 3" beyond outer edge of *Lamp Hood*.



Herbs with Upright Main Stem – Sometimes an early pruning of plants such as basil, will encourage plants to branch out, rather than grow straight up. For plants that will benefit from this, you should...

- Follow main stem up from base of plant past 3 sets of leaves.

NOTE: There may be more than one stem in the Grow Pod that needs pruning.



- Cut main stem just above 3rd leaf set.



- Weekly pinching of plants just above uppermost set of leaves (growth point) at top of stem will also encourage plants to grow and branch out.



All Non-Fruiting Plants – If you see flower buds or flowers on a plant that is being grown for its leaves, not its fruit or flowers, remove them.

Cut flowering stem just above a set of leaves, no more than 1/3 of the way down stem. This will extend the life and productivity of the plant.



Flowers – To keep flowering plants (such as petunias) full of blossoms, remove old flowers, a process known as “deadheading”.

Pinch off entire flower blossom with fingers or cut with scissors. If possible, cut flower stem too.



HELPFUL HINT: Deadhead your flowers as they start to fade to avoid accidentally pinching off unopened blossoms. At a quick glance, flower buds can look a bit like dead blossoms (see below).



Keep Your Garden Healthy

Keeping a watchful eye on your Garden is not only a joy, but also a smart way to make sure your plants stay healthy.

As plants grow, you may see some dead or brown leaves around base of plants. This is perfectly normal.

- Remove these leaves with scissors or pinch off with fingers.
- Remove dead blossoms from plants by pinching off with fingers.



Support Plants

Fruiting plants may produce so much fruit that plants begin to tip over or break. If this occurs, support plants and bring them to the upright position by securing each plant to *Lamp Arm* with a tie.



Suggested Materials to Use

The best way to support fruiting plants is with *AeroGarden Soft-Ties* – purchase at www.aerogardensupport.com or from your retailer.

Ribbon, at least 1/4" (0.6cm), hook & loop tape, or old stockings will also work for securing your plants.

- ! Do not use ties that will dig into (and damage) stem, such as string or wire. Also avoid materials that stretch, such as stretch ties sold in gardening shops, as these are not strong enough to support fruit-filled branches.

HELPFUL HINT: The best way to figure out where to place tie is to gently push on main stem with your fingers, testing for strength and ability to support the plant. Typically, your tie will be no more than 2" above the base of plant.

How To Support Fruiting Plants

- Loop a tie around main stem at a point where it:
 - a) is strong enough not to bend or break when tie is secured, and
 - b) stands upright when tie is pulled toward *Lamp Arm*.



- Tightly loop one end of tie around *Lamp Arm*. Hold tie in position with one hand. With other hand, gently pull opposite end of tie to bring main stem to an upright position.



- Secure two ends of tie to each other by twisting.



- If you notice other heavy branches that need support, secure them to *Lamp Arm* as well.

- ! Loosen or untie supports that are around the moving portion (top) of *Lamp Arm* before raising *Lamp Hood*, to avoid damaging plant stems.

Continued on next page

Support Plants *(Continued)*

Support for Full-Size Fruiting Plants

If you are growing full-size, fruiting plants using an *AeroGarden Deluxe, PRO²⁰⁰, 6 Elite+*, or a 7-Pod model outfitted with a *Deluxe Upgrade Kit*, we recommend using the *AeroGrow Trellis System** to support your plants. *Trellis Systems* and additional *Trellis Coils* can be ordered at www.aerogardensupport.com.



*Trellis Brackets *must be attached to the Lamp Hood in order to use Trellis System. Installation instructions are included with Trellis System.*

Once *Trellis Brackets* and *Trellis Coils* are attached to *Lamp Hood*, you can begin attaching *Coils* to your plants.

- Hold plant up and pull *Trellis Coil* strap down far enough to loop it around plant stem.
- Loop strap around stem and snap shut.

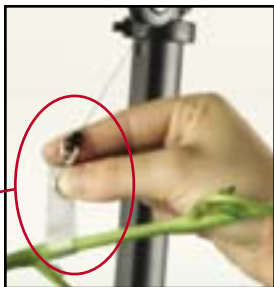


Photo shows a properly attached Trellis Coil.

HARVESTING YOUR GARDEN

If you grow culinary plants, it is important to continually harvest to keep plants healthy and productive.

Here are some general guidelines for harvesting plants grown in an AeroGarden.

- Do not remove more than a third of leaves or stems from any one plant at a time.
- Harvest just before using for best flavor.
- Remove ripe fruit.
- As you harvest, try to keep plants at about the same height so they all receive enough light.
- After harvesting, lower light(s), if necessary.

How to harvest each plant depends on plant's structure and growth. Here are some general guidelines for some common plant types.

Harvest Your Garden

Leafy Greens

(such as lettuce varieties)

- Remove entire leaves by cutting at base of the leaf.
- To ensure healthy new growth, do not harvest all the leaves from any one *Grow Pod*. For continuous harvesting, we suggest you never harvest more than 1/3 of a plant at any time.



Continued on next page

Harvest Your Garden *(Continued)*

Bunching Herbs

(such as chives and parsley)

- Harvest herbs that grow in a bunch by cutting an entire stem – just a stem, not the entire plant!
- Select the oldest stems, found near outer edges of plant. *(These stems are generally wider than younger ones and leaves may have some yellow around the edges.)*
- Cut near the base of stem.

Also, remember to remove stems that shade other plants in your garden.



Branching Herbs

(such as mint, basil, oregano)

- Cut plants just above a set of leaves (growth point) not more than halfway down stem.



Also harvest by cutting just above a termination point (where one stem meets another).

- Cut wider (older) of two stems.



Troubleshooting

What do I do when a *Grow Bulb* burns out?

Replacement bulbs can be ordered from your retailer or at www.aerogardensupport.com.

What should I do if my *Grow Bulb(s)* aren't working?

Make sure *Grow Bulb(s)* are firmly inserted in *Lamp Hood*. Also check that Garden is plugged into a working electrical outlet and *Lamp Cord* is plugged into *Lamp Hood*.

What if I want to move my Garden to another location?

Go right ahead! Keep in mind that each AeroGarden model has different features. Unplugging it in the middle of its growth cycle could cause your AeroGarden's light timer to reset. *Before moving your AeroGarden, consult your Quick Start Guide to see how light timer is affected when your model is unplugged.*

To move your AeroGarden, be sure to pick it up by holding the *Lamp Arm* with one hand and sliding your other hand under the bottom of the *Base*.

Can the *Grow Sponges* be re-used?

If your seeds did not germinate, or your cutting did not take, you should be able to re-use your *Grow Sponge(s)**.

Gently remove *Grow Sponge* from bottom of *Split-Apart Basket*. (Try to do this without ripping or removing *Pod Label*.) Remove non-germinated seeds or dead cutting. Follow steps on pages 8-12 for placing seeds or cuttings in *Grow Sponge*.

* If there is any indication of algae growth or mold on *Grow Sponge(s)*, they are not re-usable and should be discarded.

Continued on next page

Troubleshooting *(Continued)*

My Garden doesn't look healthy. What can I do?

If you are concerned about the health of your Garden, please go through the following...

- Keep light(s) as close to plants as possible, without leaves touching *Grow Bulb(s)*.
- Replace *Grow Bulb(s)* every 6 months (see *Quick Start Guide* for model-specific instructions).
- Continually remove dead leaves and flowers.
- Don't use softened or well water.
- Continually prune, pollinate and harvest plants.
- Make sure plants are not getting too many or too few nutrients (see page 16 for information).

Why haven't my seeds germinated?

If your seeds do not germinate, the first thing to check is the expiration date on the seed packet. Viability of seeds decreases significantly with age. Also verify that your seeds, whether in the seed packet or in a *Grow Pod*, were stored properly. Excessive humidity and/or heat can ruin a seed.

A hard outer coat on a seed may also hinder germination. Try gently rubbing outer coat of these seeds with sandpaper or a file before placing in a *Grow Sponge*.

Finally, make sure you plant more than one seed in a *Grow Pod*. Even the best seeds do not germinate 100% of the time. See page 8 for more details on how many seeds to plant in each *Grow Pod*.

What if one of the plants in my AeroGarden dies?

Occasionally you might find that one of the plants in your custom Garden does not thrive. If a plant dies, remove entire *Grow Pod* from AeroGarden. Cover the empty *Grow Surface Opening* to inhibit algae from

growing in *Bowl*. Choose a material that will tolerate moisture such as aluminum foil or a plastic milk jug lid.

What if one of the plants in my AeroGarden is much taller than the others?

Despite all your planning, you may find a plant in your garden that is growing faster than the others. Try pruning the plant to keep size in check and keep *Lamp Hood* at lowest setting possible without burning plants.

How do I prevent a plant from spreading out and shading other plants in my AeroGarden?

Try rearranging plants by rotating the *Grow Pod* so the spreading part of plant is near the outer edge of the AeroGarden. This, combined with pruning, can alleviate some shading problems.

How do I care for my Garden when I go out of town?

Add water to raise the level up to "Fill To Here." A newly planted Garden with *Domes* removed may not need care for up to 2 weeks. However, if your Garden is mature and you will be out of town for several days, we recommend that you make arrangements for someone to care for your Garden while you are away.

What do I do when my garden has completed its growth cycle?

For step-by-step instructions regarding the care of your AeroGarden after plants have stopped growing, refer to the "Prepare for your Next Garden" section in your model's *Quick Start Guide*.

The **AeroGarden**[™]

AeroGrow International, Inc.

**Quick Start Guides available at:
www.aerogardensupport.com**

507314-0000 AA 8/28/08 U.S. Patents Pending

© 2007-2008 AeroGrow International, Inc.

Download from Www.Somanuals.com. All Manuals Search And Download.

Free Manuals Download Website

<http://myh66.com>

<http://usermanuals.us>

<http://www.somanuals.com>

<http://www.4manuals.cc>

<http://www.manual-lib.com>

<http://www.404manual.com>

<http://www.luxmanual.com>

<http://aubethermostatmanual.com>

Golf course search by state

<http://golfingnear.com>

Email search by domain

<http://emailbydomain.com>

Auto manuals search

<http://auto.somanuals.com>

TV manuals search

<http://tv.somanuals.com>