

AIPHONE

IS SERIES

Commercial & Security IP Video Intercom system

IS-SOFT

PC Master Station

SETTING MANUAL

GETTING STARTED

SETTING THE PC MASTER STATION

Thank you for selecting Aiphone for your communication and security needs. Please read this manual and the separate "OPERATION MANUAL" carefully before setting and using this system.

IMPORTANT

Please read and understand the setting procedures before beginning the setup process.

Please note that images and illustrations depicted in this manual may differ from the actual ones.

CONTENTS

INTRODUCTION.....	2	SETTING THE PC MASTER STATION ...	7
UNPACKING.....	2	OUTLINE OF SETTINGS	7
GETTING STARTED.....	3	MAKING THE SETTINGS	8
SYSTEM CONFIGURATION		Setting procedure	8
EXAMPLE	3	Setting list	9
CONNECTIONS.....	4	Adjusting volumes.....	10
INSTALLING THE IS-SOFT.....	5	Making network settings.....	10
System requirements for PC	5	Making preference settings	11
Installing	6	■ Settings on [Preference 1]	11
Uninstalling	6	■ Setting on [Preference 2].....	12
Starting up the IS-SOFT	6	Setting speed dials	12
		■ Searching for a station, zone or	
		remote site from the SEARCH LIST...	13
		Making transfer settings	16
		Making privacy setting	17
		Maintenance	17

INTRODUCTION

The IS system is a commercial and security video intercom system especially designed for applications in facilities such as office buildings, factories, schools, hospitals, and prisons. This product is an application to be installed in a PC for using it as a master station in the IS system. The PC master station can be used almost as the same as other color monitor IP master stations adding some unique functions.

UNPACKING

After unpacking, check the following accessory is included.

- DVD (IS-SOFT (this application), INSTALLATION MANUAL for IP stations, OPERATION MANUAL, SETTING MANUAL)
- Information sheets (license key, China RoHS)

* Please keep these items in a safe place for future use.

GETTING STARTED

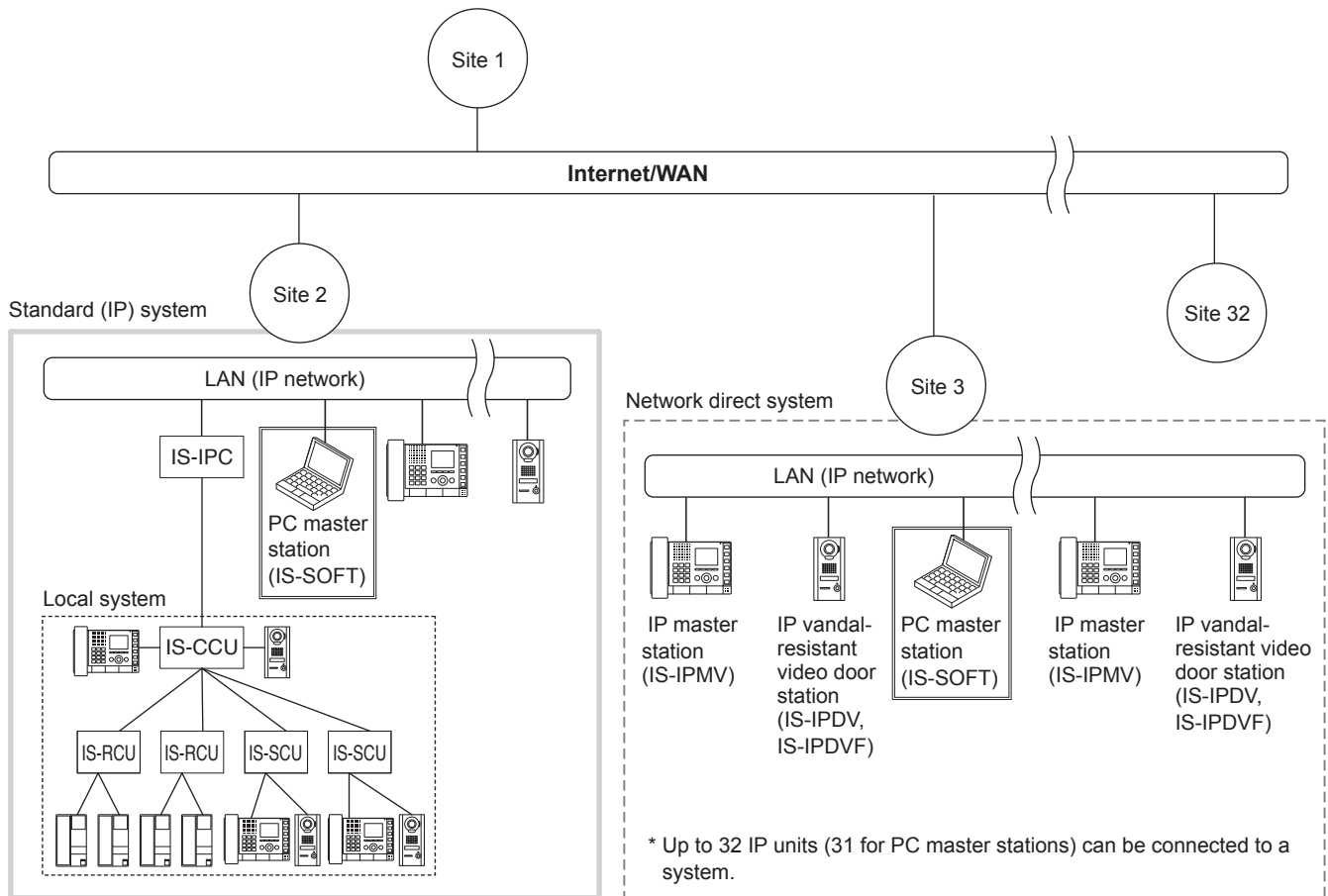
SYSTEM CONFIGURATION EXAMPLE

A PC master station can be used in either a standard (IP) system or a network direct system.

- * A standard (IP) system consists of IP control unit(s), IP stations and local system(s).
- * A network direct system consists of IP stations only. It includes no IP control unit, but needs at least one IP master station or IP door station.

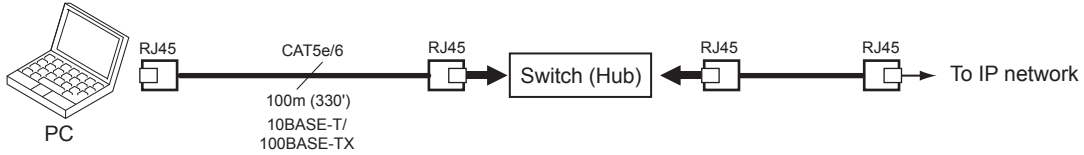
For details about the standard (IP) system or network direct system, refer to the respective "INSTALLATION MANUAL", "SETTING MANUAL" and/or "OPERATION MANUAL".

An example of network direct system



CONNECTIONS

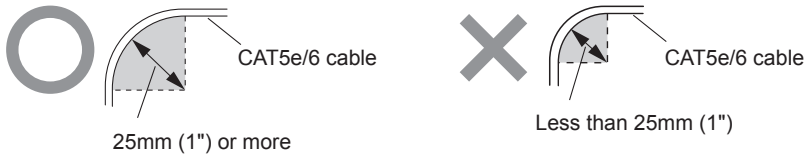
Connect a PC on which you will install the IS-SOFT application to an IP network via a switch or hub.



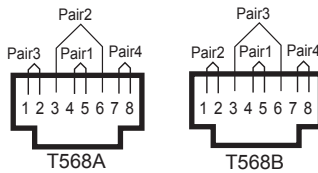
Notes on CAT5e/6 cables

* A CAT5e/6 cable is not included in this product.

- Do not bend the cables to an extent where the radius is less than 25 mm (1"). Communication failure could result.



- Do not remove the CAT5e/6 cable jacket more than necessary.
- Arrange the color code of the RJ45 connections in accordance with EIA/TIA-568A and 568B.



- **Be sure to check the condition of cable connections with a LAN checker before connecting with a LAN cable.**
- Do not pull or put excess strain on CAT5e/6 cables.

INSTALLING THE IS-SOFT

Install the IS-SOFT on your PC from the DVD supplied with this product.

* You may need to log on to your PC as the Administrator to install the IS-SOFT.

System requirements for PC

Your PC must meet the following system requirements to use the IS-SOFT.
Also refer to the instruction manual supplied with your PC.

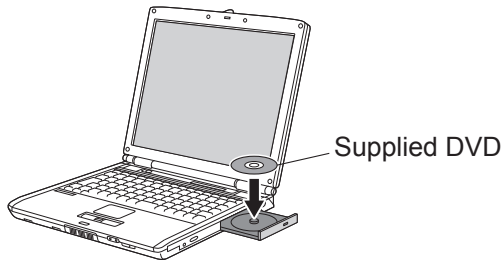
OS	Windows XP Home/Professional (SP3) (32bit) Windows Vista Ultimate/Home/Business/Enterprise (SP2) (32/64bit) Windows 7 Home Premium/Professional/Enterprise/Ultimate (32/64bit)	
PC system requirements	Processor	2 GHz or higher
	System memory (RAM)	1 GB RAM or higher
	Hard disk	10 MB or more (additional space is needed for recording)
	Sound card	8 bit full duplex, Direct Sound compatible
	Display	800 x 600 or higher (x 1) 1024 x 768 or higher (x 2) 1920 x 1200 or higher (x 3)
	Run-time	Microsoft (R).NET Framework 2.0 or later
	Network	10BASE-T/100BASE-TX Ethernet
Protocol	TCP/IPv4, UDP/IPv4, SIP, Others	
Network bandwidth	320k to 8Mbps	



- The application may not run, or may not operate correctly (such as freezes occurring) on a PC with specifications below the necessary requirements.
- Serious damage could be caused if an error occurs during door release.
- We recommend using a PC and DVD drive that exceed the basic system requirements.

Installing

- 1 Insert the DVD into your PC.



- 2 Click "English" on the language selection screen.
- 3 Select "IS-SOFT" → "PcApplication", and then follow the on-screen instructions to install.

NOTES:

- If ".NET Framework" is not already installed, the .NET Framework installation window is displayed. Follow the on-screen instructions to install.
- When starting up the application, if a security or virus check warning is displayed, please allow the application to continue.
- Depending on the OS of a PC, different screens may be displayed. Follow the on-screen instructions to install.

- 4 Read and/or follow the instructions, and then click **Next** on each window.
 - If necessary, change the folder in which the IS-SOFT is to be installed, and then click **Next**.
 - In the [Browse for Folder] window: Select the folder where you want to save recorded files, and then click **OK**.
 - * The selected folder becomes the storage location for recorded files.
- 5 When the [Installation Complete] window appears, finish the installation.

* After the installation has finished, restart the PC.

Uninstalling

From the Windows "start" menu, select "Control Panel" → "Add or Remove Programs", and select "Aiphone_PCMS" to delete it.

Starting up the IS-SOFT

Follow one of the methods [A], [B], [C] and [D] below.

[A] Double-click the "  " icon on the desktop.
Aiphone_PCMS

[B] Click "Aiphone_PCMS" in the "start" menu.

[C] Select "start" menu → "All programs" → "Aiphone_PCMS."

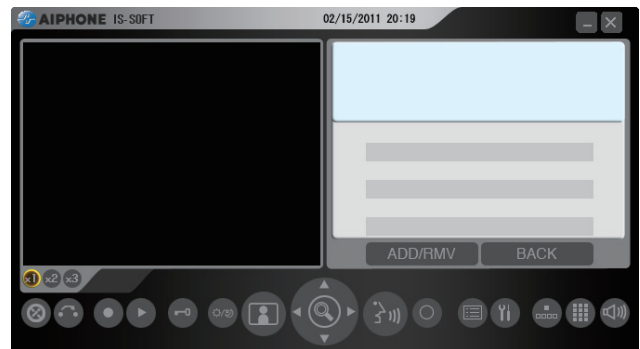
[D] Select "My computer" → "Local disc (C:)" → "Program files" → "AIPHONE" → "PCMasterStation.exe".

NOTE:


If another location is specified for installing the IS-SOFT during installation, run the file from the location where it is installed.



The main window of the PC master station is displayed.



After installation of the IS-SOFT on the PC has finished, make the settings for the PC master station before using it.

* When the settings have been correctly made, the color of "  " icon changes from gray to blue.
Aiphone_PCMS

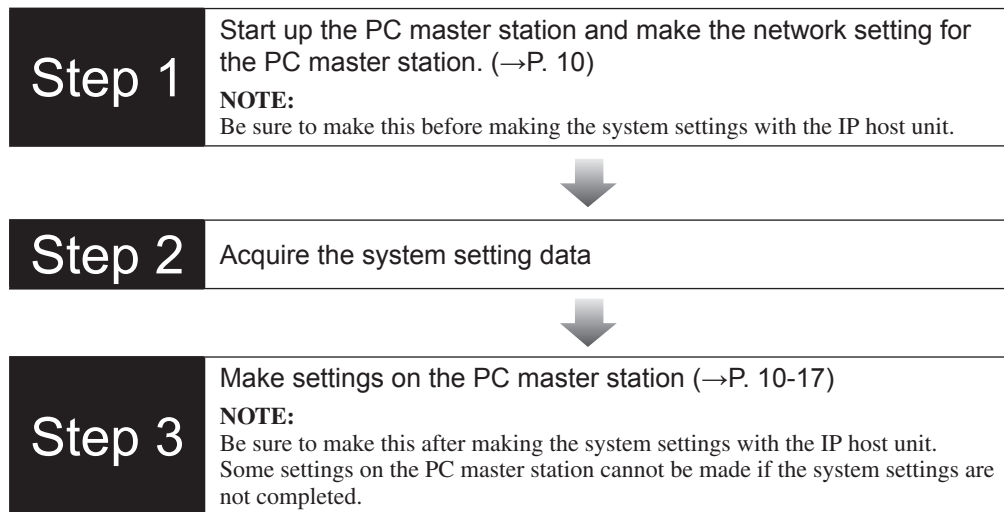
SETTING THE PC MASTER STATION

OUTLINE OF SETTINGS

After installation of the IS-SOFT on the PC has finished, make the settings for the PC master station before using it. Make the settings by following the steps below.

PRECAUTIONS:

- Be sure to make the settings before using the PC master station. If the settings have not been made, you cannot use the PC master station.
- Make the settings correctly. If the settings are not made correctly, the PC master station will not function as you planned.
- To use a PC master station, it must be registered at [**IP unit registration**] on the IP host unit in advance.
- The specified license key is needed for the settings. (Keep the provided license key sheet in a safe place.)
- Be sure to follow the steps below in that order. If you fail to do so, the settings will not be made correctly.



MAKING THE SETTINGS

The following describes the settings that can be made on the PC master station windows. First of all, start up the PC master station.

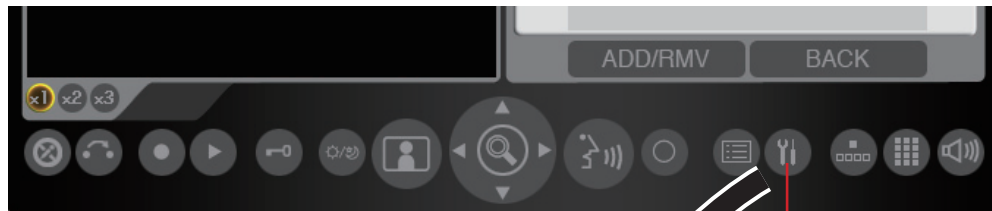
Setting procedure

The settings are made on the Volume control window and Setting window.

First open either window from the Main window, and then make the settings displayed on the window.

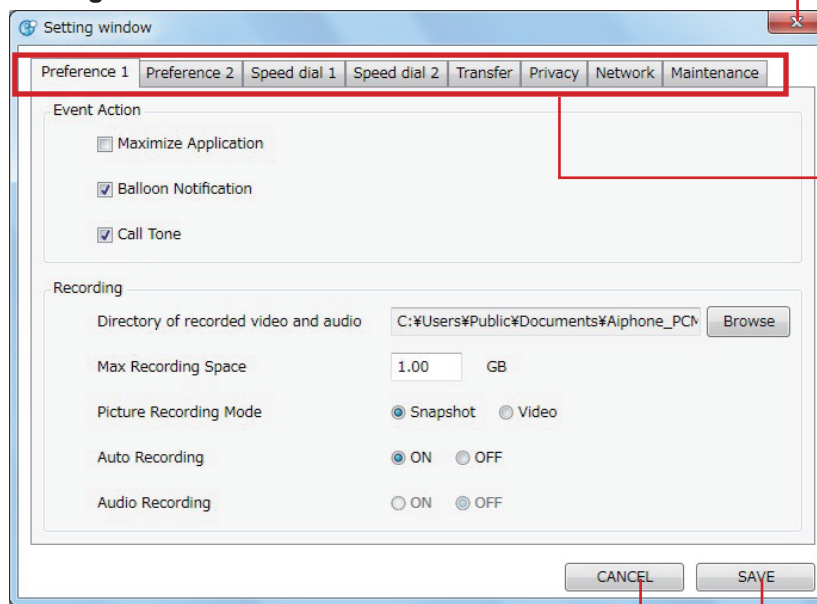
* Furthermore, the Setting window has eight setting pages. They can be opened by clicking the respective tabs.

Main window



Click

Setting window



Close button
Closes the Setting window.

Setting page switching tabs
Press a tab to open the corresponding setting page.

CANCEL button <CANCEL>
Cancels the set contents on the window that is currently open and restores the previous contents.

SAVE button <SAVE>
Saves the set contents on the window that is currently open.

* The notation in < > is used for operational descriptions in this manual.

Setting list

NOTES:

- The following list is a brief overview of the setting items available in the settings on the Setting window. The descriptions, and the style and order of descriptions do not necessarily equate with the actual displays.
- Make a note of the setting results you have made, and keep it in a safe place not to lose it.

Settings on the Setting window

Tab	Title	Item	Setting range	Default
Preference 1	Event Action	Maximize Application	ON (Checked)/OFF (Not checked)	OFF
		Balloon Notification	ON (Checked)/OFF (Not checked)	ON
		Call Tone	ON (Checked)/OFF (Not checked)	ON
	Recording	Directory of recorded video and audio	(Designate the directory in which recorded files are stored.)	-
		Max Recording Space	00.01 to 10.00 GB	01.00 GB
		Picture Recording Mode	Snapshot/Video	Snapshot
		Auto Recording	ON/OFF	ON
Audio Recording* ¹	ON/OFF	OFF		
Preference 2	Display	Display language	English/French/Spanish/Dutch/Italian/German/Japanese	English
		Un-answered call display	ON/OFF	OFF
		List order	Name/123	123
	Call tone	Door call: Normal	1/2/3/4/5/6	1
		Door call: Priority	1/2/3/4/5/6	2
		Door call: Urgent	1/2/3/4/5/6	3
		Room sub call: Normal	1/2/3/4/5/6	4
		Room sub call: Priority	1/2/3/4/5/6	5
		Room sub call: Urgent	1/2/3/4/5/6	6
	Communication	Communication method	Hands-free/Press to talk	Hands-free
Speed dial 1	Speed dial	Speed dial 1 to 12	(Register a station, zone or remote site to each speed dial.)	-
Speed dial 2	Speed dial	Speed dial 13 to 24	(Register a station, zone or remote site to each speed dial.)	-
Transfer Setting	Transfer	Transfer	ON/OFF	OFF
		Transfer destination	(Select a master station or remote site.)	-
		Transfer delay	0 to 60 Seconds	0
	Schedule transfer	Transfer	ON/OFF	OFF
		Scheduled destination* ²	(Select a master station or remote site.)	-
	Telephone transfer	Transfer	ON/OFF	OFF
Privacy	Privacy	Privacy	Privacy 1/Privacy 2/OFF	OFF
		Call tone (Privacy 2)* ³	1/2/3/4/5/6	4
Network	IP version	-	IPv4	IPv4
	Host unit	IP Address	0 - 255 (for each field)	-
		Connection Port	1024 to 64999	5060
		Connection Password	Up to 8 alphanumeric characters	-
		Multicast address	(Acquire from the IP host unit automatically.)	-
	Network Interface Card: NIC	-	(Select from the list.)	-
	PC Application	IP Address	(Acquire from the IP host unit automatically.)	-
		MAC address	(Depends on the PC.)	-
		Unit name	Up to 24 alphanumeric characters	-
		Connection Port	(Acquire from the IP host unit automatically.)	-
		Audio Port	(Acquire from the IP host unit automatically.)	-
		Video Port	(Acquire from the IP host unit automatically.)	-
	License key	-	(* ⁴)	-
Maintenance	Device	Microphone	-	-
		Speaker	-	-
		Tone	-	-
	Initialization	-	-	

*1: Available when [Video] is selected at [Picture Recording Mode].

*2: Available when [Schedule transfer ON/OFF] is set to ON.

*3: Available when [Privacy 2] is selected.

*4: Use the unique license key written on the attached sheet.

Adjusting volumes

NOTES ON VOLUME ADJUSTMENT

- When talking, if you cannot hear audio from the target door station or master station even after turning up the speaker volume, try turning down the microphone volume gradually. (The PC master station uses a hands-free system. If the microphone volume is too high, the talking might not switch to the receiver's side.)
- The microphone volume settings and the speaker volume settings are synchronized with the PC's settings. Please note that the communication volume is changed when you change the volume in "Sounds and Audio Devices Properties" from the PC.
- Depending on the PC's environment, the sound quality may be bad or communication may not be possible.

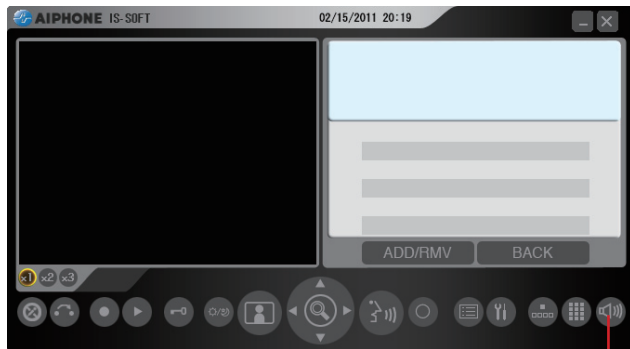
⚠ CAUTION

Do not adjust the volume with your ear close to the speaker. A sudden increase in volume could damage your eardrum.

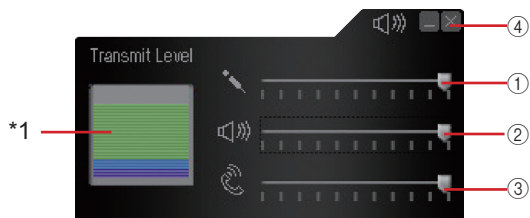
Adjusting method

Adjust volumes on the Volume control window as shown below.

Main window



The Volume control window appears.



- ① **Microphone volume**
Adjust the microphone volume.
* Drag the slider right to increase or left to decrease the volume.
- ② **Tone volume**
Adjust the tone volume.
- ③ **Speaker volume**
Adjust the speaker volume.
- ④ **Close button**
Click this to close the Volume control window (when the adjustments have finished).

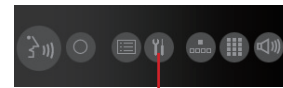
*1: The volume level of talking sound is shown here.

Making network settings

Be sure to register the IP host unit to the system and make the required settings for the IP host unit before starting these settings.

- 1 Click the Setting window button on the main window.

Main window

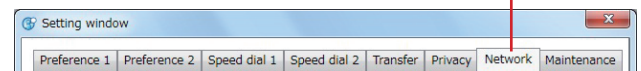


Click.



The Setting window appears.

- 2 Select the [Network] tab on the Setting window.



- 3 Make the settings on this window.

Host unit:

Enter the data for the IP host unit in this system.

[IP Address]:

Enter the IP address of the IP host unit.

[Connection Port]:

Enter the connection port of the IP host unit.

[Connection Password]:

Enter the connection password of the IP host unit.

[Multicast address]:

(Unmodifiable)

* This is the multicast address used when paging is triggered by the PC. This is set in the System settings on the IP host unit.

[Network Interface Card: NIC]:

Select the optional NIC (Network Interface Card) being used.

PC application:

Required data are entered to the following items automatically when you have entered data to [IP Address], [Connection Port] and [Connection Password], and then clicked [SAVE] with the IP host unit registered to the system and set with required settings.

[IP Address]:

Displays the IP address of the PC.

[MAC address]:

(Unmodifiable: Your PC's MAC address is automatically displayed.)

[Connection Port]:

Displays the communication port number designated on the PC.

[Audio Port]/[Video Port]:

Displays the audio and video port numbers set on the IP host unit as to be used on this unit.

[License key]:

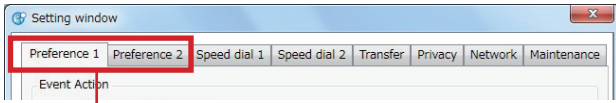
Enter the license key of your IS-SOFT. (See the provided sheet.)

- 4 Click [SAVE] to save the set contents and overwrite the previous ones.

* If you wish to cancel the set contents and restore the previous ones, click [CANCEL].

Making preference settings

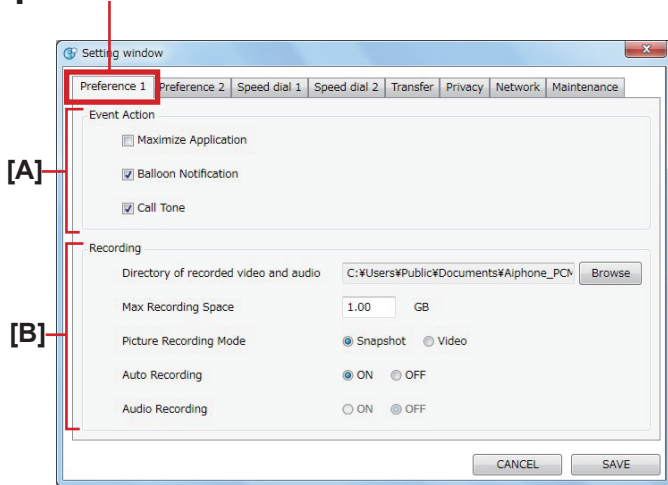
Make the preference settings on the Setting window as shown below.



Select the [Preference 1] or [Preference 2] tab and make the setting in the respective window. (See below for details about the settings.)

■ Settings on [Preference 1]

1 Select the [Preference 1] tab in the Setting window.



2 Make the settings on this window.

[A] Event Action

Check the box for each item to activate the function described below.

[Maximize Application]:

When there is a call from a station (even when minimized), the PC master station is automatically maximized.

[Balloon Notification]:

When there is a call from a station etc., a Balloon Notification appears.

[Call Tone]:

When there is a call from a sub station, the call tone sounds.

[B] Recording

Make the settings for the recording function.

[Directory of recorded video and audio]:

You can designate the directory in which recorded files are stored.

[Max Recording Space]:

You can set the maximum recording space of the application. Enter a value between "00.01" and "10.00" GB as the Max Recording Space.

NOTE:

Recording cannot be done over the set Max Recording Space. (No overwriting is performed.)

[Picture Recording Mode]:

You can select the image recording method from "Snapshot" which only records one image from the video door station, or "Video" which continuously records images from the video door station.

NOTES:

- You cannot make audio recordings when "Snapshot" is selected.
- When "Video" is selected and [Audio Recording] is set to ON, sounds at the video door station are recorded while communicating with the target station side during the auto or manual recording.

[Auto Recording]:

Set whether or not to automatically record images of the video door station when a call is received from the video door station.

[Audio Recording]:

Set whether or not to make an audio recording.

* To activate audio recording, be sure to set [Picture Recording Mode] to "Video". You cannot make audio recording when "Snapshot" is set.

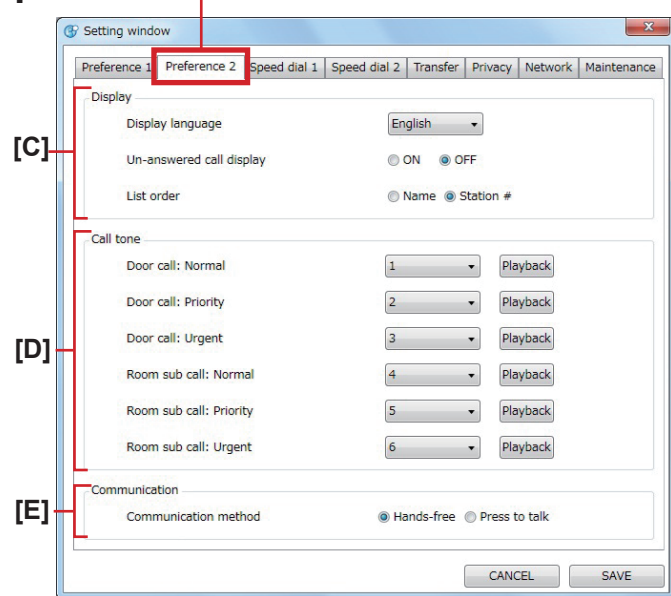
* When "Video" is selected at [Picture Recording Mode] and [Audio Recording] is set ON, the sounds from a sub station (door station or room sub station) or master station can also be recorded while communicating with the target station side during the auto or manual recording.

3 Click **SAVE** to save the set contents and overwrite the previous ones.

* If you wish to cancel the set contents and restore the previous ones, click **CANCEL**.

■ Setting on [Preference 2]

- 1 Select the [Preference 2] tab in the Setting window.



[C]

[D]

[E]

[C] Display

[Display language]:

Select the language for displaying on the PC master station.

[Un-answered call display]:

Set whether or not to display the record of incoming call(s) automatically.

[List order]:

Select either name or no. to sort the list.

[D] Call tone

Select the tone of calling from the door stations and room sub stations from 6 types.

The setting can be made to "Normal", "Priority" and "Urgent" individually.

[Door call]: Normal/Priority/Urgent

[Room sub call]: Normal/Priority/Urgent

* Click **Playback** to check the currently selected tones.

[E] Communication

[Communication method]:

Select the talking method of using the microphone from either "Hands-free" (selectable between hands-free or press-to-talk mode) or "Press to talk" (press-to-talk mode only).

- 2 Click **SAVE** to save the set contents and overwrite the previous ones.

* If you wish to cancel the set contents and restore the previous ones, click **CANCEL**.

Setting speed dials

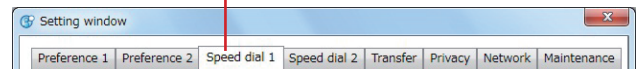
You can register stations, zones or remote sites you call frequently to the speed dials (1 to 24).

NOTE:

This setting is not available if stations, zones or remote sites are not registered to the system in the System setting on a PC.

Setting method

- 1 Select the [Speed dial 1] tab on the Setting window.



- 2 Click **Setting** for [Speed dial 1].

The search items are shown in the SEARCH LIST displayed in the list area of the Main window.

- 3 Select the target station, zone or remote site by using the desired search item in the SEARCH LIST.



Refer to "Searching for a station, zone or remote site from the SEARCH LIST" (→P. 13)

* Also refer to "OPERATION MANUAL" for details about part names and their functions, etc.

The registered station, zone or remote site number and name are displayed in the boxes on the right hand of the [Speed dial 1] window.

- 4 Make the settings to [Speed dial 2] to [Speed dial 12] in the same way.


To make the settings to [Speed dial 13] to [Speed dial 24], select the [Speed dial 2] tab.

- 5 Click **SAVE** to save the set contents and overwrite the previous ones.

* If you wish to cancel the set contents and restore the previous ones, click **CANCEL**.

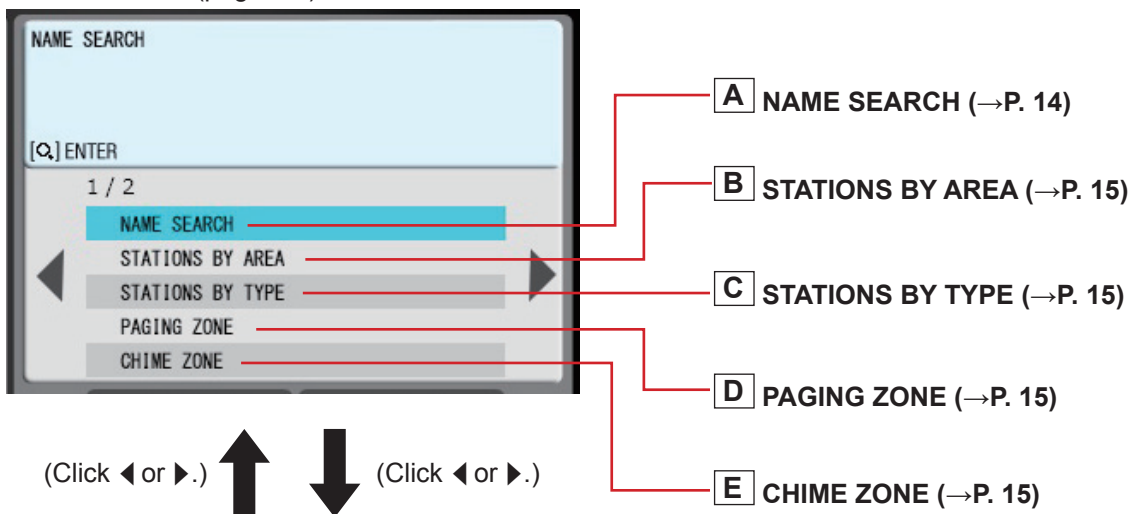
■ Searching for a station, zone or remote site from the SEARCH LIST

You can select a station, zone or remote site registered to the system by using one of the search items in the SEARCH LIST.

- 1 Click  repeatedly to select the target search item **A** to **F** (so that it is highlighted).



SEARCH LIST (page 1/2)




SEARCH LIST (page 2/2)



- 2 Click  to decide on the selected one.

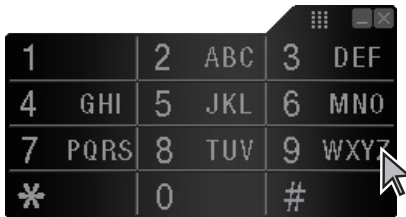
A Searching for a station or zone in your site by entering the name [NAME SEARCH]

1 Select [NAME SEARCH] from the SEARCH LIST. (→P. 13)

2 Click  to display the Dial keys window.

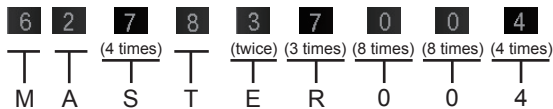


3 Enter a name by using the dial keys.

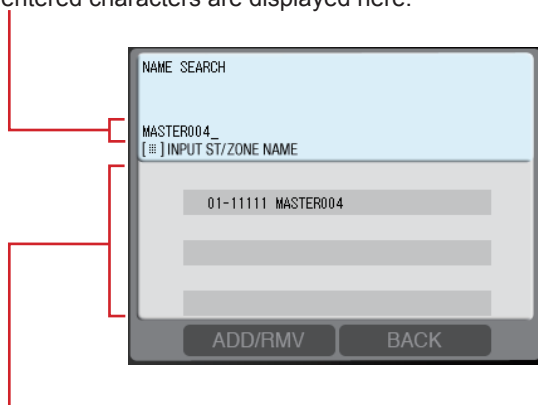


e.g.)

When searching for "MASTER004";
Click the dial keys as follows.




The entered characters are displayed here.



All the station and/or zone names that include the entered characters in your site are displayed in the list.

* The search is narrowed down whenever a character is added.

NOTE:

You can also select a station from the list by using  after you select [NAME SEARCH] in step 1.


To delete the just entered character:

Click .



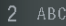
To enter the same characters or characters on the same dial key sequentially:



(e.g.: To enter "AB")

1. Enter "A". (Click the dial  key once.)





2. Click .







3. Enter "B". (Click the dial  key twice.)

4 Click  to select the target station or zone (so that it is highlighted) from the list, and then click .



B Searching for a station in your site by designating an area [STATIONS BY AREA]

- 1 Select [STATIONS BY AREA] from the SEARCH LIST. (→P. 13)
- 2 Click  to select the target area in your site from the list (so that it is highlighted), and then click  to select.
All the stations in the area are displayed in the list.
- 3 Click  to select the target station (so that it is highlighted), and then click .





C Searching for a station in your site by designating a station type [STATIONS BY TYPE]

- 1 Select [STATIONS BY TYPE] from the SEARCH LIST. (→P. 13)
All the station types are displayed in the list.
- 2 Click  to select the target station type from the list (so that it is highlighted), and then click  to select.
All the stations of the selected type are displayed in the list.
- 3 Click  to select the target station in your site (so that it is highlighted), and then click .



D Searching for a paging zone in your site from the list [PAGING ZONE]

- 1 Select [PAGING ZONE] from the SEARCH LIST. (→P. 13)
All the registered paging zones are displayed in the list.
- 2 Click  to select the target zone (so that it is highlighted), and then click .

E Searching for a chime zone in your site from the list [CHIME ZONE]

- 1 Select [CHIME ZONE] from the SEARCH LIST. (→P. 13)
All the registered chime zones are displayed in the list.
- 2 Click  to select the target zone (so that it is highlighted), and then click .
- 3 Click  to select the sound source of chime from the list (so that it is highlighted), and then click .

F Searching for a remote site as the target of calling, paging or chime paging from the list [REMOTE SITE]

- 1 Select [REMOTE SITE] from the SEARCH LIST. (→P. 13)
All the registered remote sites are displayed in the list.
- 2 Click  to select the target site (so that it is highlighted).
- 3 After clicking , select the performance you want to do from [CALL], [PAGING] and [CHIME] from the list (so that it is highlighted).

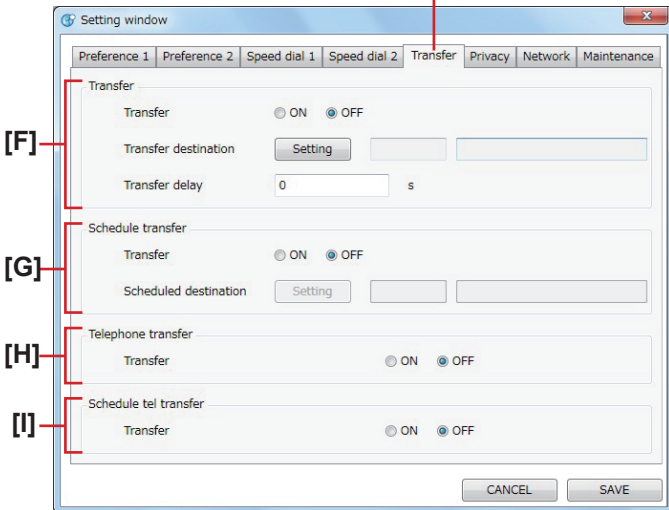
Making transfer settings

You can transfer a received call to another master station, another site or a telephone number.

NOTE:

This setting can be made only when the System setting on a PC has been completed.

- 1 Select the [Transfer] tab on the Setting window.



- 2 Make the settings on this window.


[F] Transfer

[Transfer]:

Set whether to enable (ON) or disable (OFF) the transferring function.

[Transfer destination] (Available when "Transfer" is set to ON):

Click **Setting** and the list of selectable master stations and/or remote sites are displayed in the Main window. Select the target station or remote site (so that it is

highlighted) and then click .

The number and name of the selected target is displayed in the boxes.

[Transfer delay] (Available when [Transfer] is set to ON and the target is selected at [Transfer destination]):

Set the delay time of starting transferring after a call is received.


[G] Schedule transfer

[Transfer]:

Set whether to enable (ON) or disable (OFF) the transferring on schedule.

[Scheduled destination] (Available when [Schedule transfer] is set to ON):

Click **Setting** and the list of selectable master stations and/or remote sites displayed in the Main window. Select the target station or remote site (so that it is

highlighted) and then click .

[H] Telephone transfer

[Transfer]:

Set whether to enable (ON) or disable (OFF) the automatic transferring to telephone.

[I] Schedule tel transfer

[Transfer]:

Set whether to enable (ON) or disable (OFF) the automatic transferring to telephone on schedule.

- 3 Click **SAVE** to save the set contents and overwrite the previous ones.

* If you wish to cancel the set contents and restore the previous ones, click **CANCEL**.

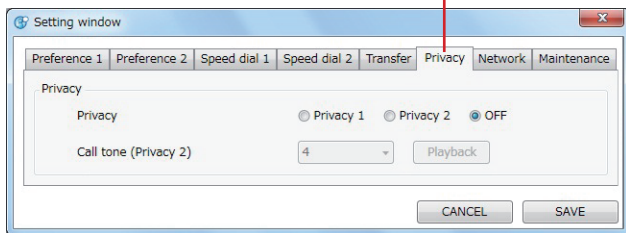
Making privacy setting

Setting of the privacy function is available when called from another master station.

When the privacy mode is activated, the microphone turns off and you will not be heard by the caller.

Item	Description	Setting range
Privacy	Sets whether or not to activate the privacy function. To activate the privacy function, select Privacy 1 or 2.	Privacy 1: The microphone is off (mute).
		Privacy 2: The microphone is off (mute) and the caller and you are notified by a tone when you receive the call that you are in the privacy mode.
		OFF: The microphone is on.
Call tone (Privacy 2)	(Available when "Privacy 2" is selected.) Selects the call tone from 6 types.	1-6

- 1 Select the [Privacy] tab on the Setting window.



- 2 Make the settings on this window.

[Privacy]:

Select the Privacy 1 or 2, or select OFF if you will not use the privacy function.

Privacy 1: The microphone is off (mute).

Privacy 2: The microphone is off (mute) and reception of a call is notified by a tone.

OFF: The microphone is on.

[Call tone (Privacy 2)] (Available when "Privacy 2" is selected):

Select the call tone from 6 types.

- * Click [Playback] to check the selected tone.

- 3 Click [SAVE] to save the set contents and overwrite the previous ones.

- * If you wish to cancel the set contents and restore the previous ones, click [CANCEL].

Maintenance

- 1 Select the [Maintenance] tab on the Setting window.

- 2 Make the settings on this window.

Device

[Microphone], [Speaker], [Tone]:

Set the sound devices of the PC for microphone, speaker and tone.

[Initialization]:

Click [Initialization] to display a pop-up window, and then click [Yes] on the pop-up window to reset all the settings in the Setting window to default.

- 3 Click [SAVE] to save the set contents and overwrite the previous ones.

- * The license key on the [Network] tab will not be deleted even if initialized.

- * If you wish to cancel the set contents and restore the previous ones, click [CANCEL].



Providing Peace of Mind

<http://www.aiphone.net/>

AIPHONE CO., LTD., NAGOYA, JAPAN
AIPHONE CORPORATION, BELLEVUE, WA, USA
AIPHONE S.A.S., LISSES-EVRY, FRANCE

Free Manuals Download Website

<http://myh66.com>

<http://usermanuals.us>

<http://www.somanuals.com>

<http://www.4manuals.cc>

<http://www.manual-lib.com>

<http://www.404manual.com>

<http://www.luxmanual.com>

<http://aubethermostatmanual.com>

Golf course search by state

<http://golfingnear.com>

Email search by domain

<http://emailbydomain.com>

Auto manuals search

<http://auto.somanuals.com>

TV manuals search

<http://tv.somanuals.com>