



Section 2

Quick Installation Guide

Model # AGIGA32PCI



Package Content:

- 32-bit PCI Gigabit Ethernet Card
- Driver Disk
- Quick Installation Guide

Section 1

Installing Hardware

Step 1 Shut down the computer, unplug its power cord, and remove the chassis cover.

Step 2 Insert the Ethernet card into a PCI slot on the computer and secure it with a chassis screw.

Step 3 Cover the computer's chassis.

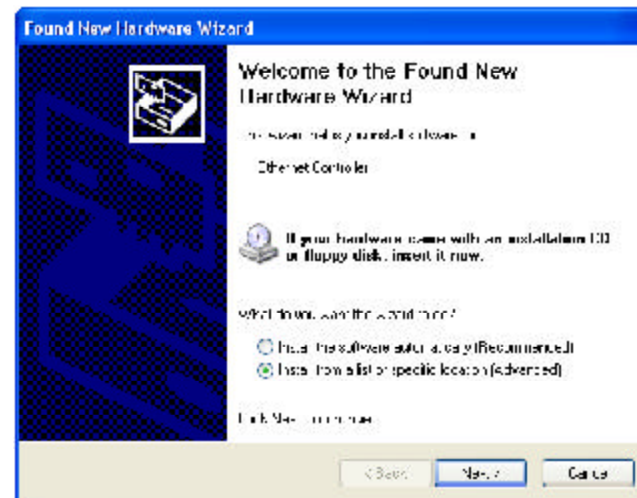
Step 4 Connect an Ethernet cable to the RJ-45 port of the Ethernet card.

Step 5 Re-plug the power cord and turn on the computer.

Installing Driver

Note: The following steps and screen shots are for Windows XP. Steps for other Windows operating systems will be noted beneath each screen shot.

Step 1 At the **Found New Hardware Wizard**, select **Install from a list or specific location (Advanced)** and click **Next**.

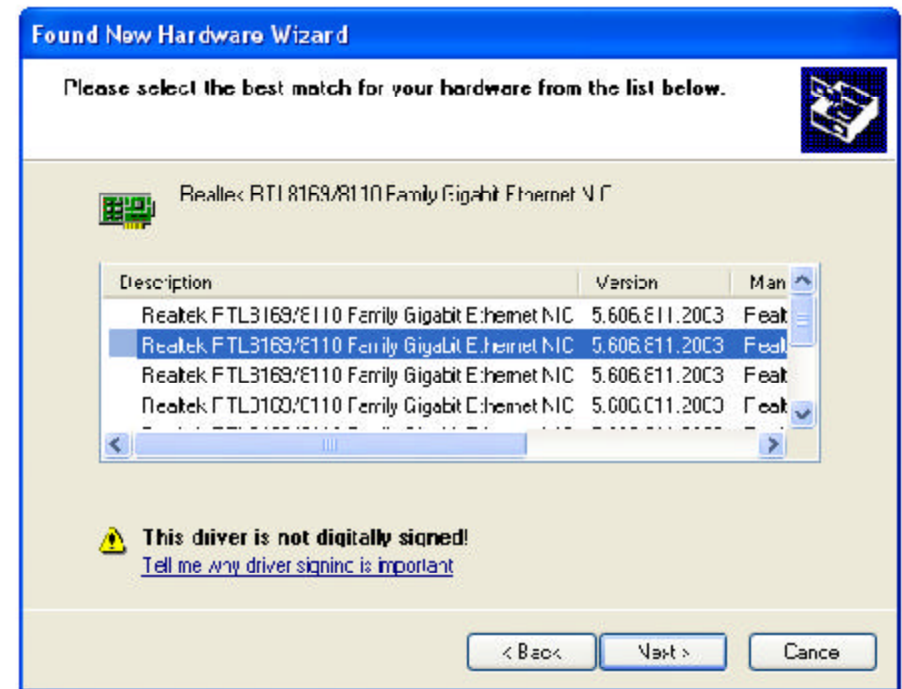
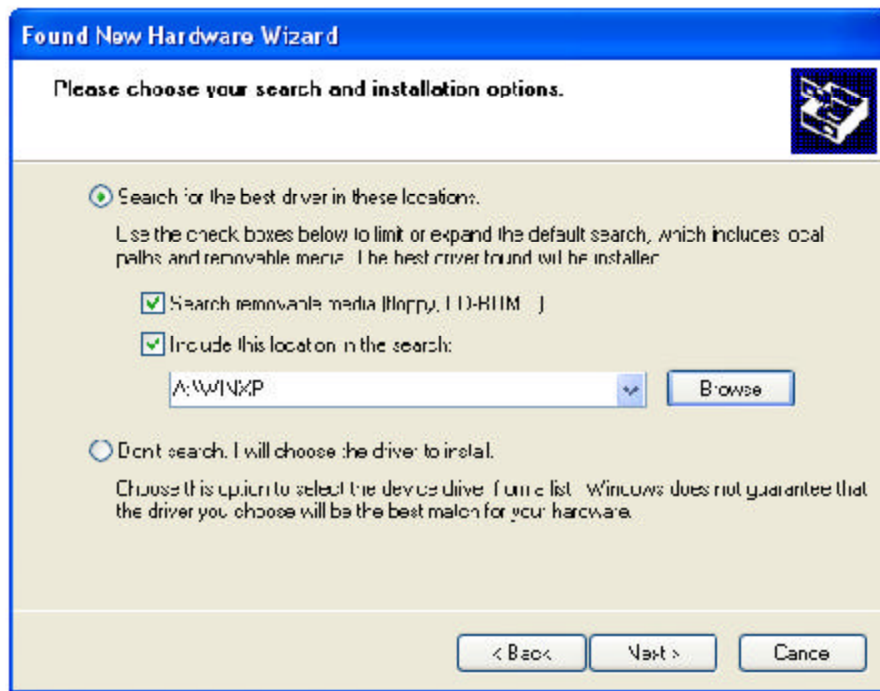


Windows 2000: Click **Next** at the **Found New Hardware Wizard**. Select **Search for a suitable driver for my device (recommended)** and click **Next**.

Windows ME: Click **Next** at the **Add New Hardware Wizard**. Select **Specify the location of the driver (Advanced)** and click **Next**.

Windows 98SE: Click **Next** at the **Add New Hardware Wizard**. Select **Search for the best driver for your device (Recommended)** and click **Next**.

Step 2 Insert the provided driver disk. Select **Search for the best driver in these locations**, type in A:\WinXP and click **Next**. **Step 3** Click **Next** to install the driver.



Windows 2000: Insert the provided driver disk. Select **Specify a location** and click **Next**. At the **copy manufacturer's files from** field, type in A:\Win2k and click **OK**.

Windows ME: Insert the provided driver disk. Select **Specify a location**, type in A:\WinME and click **Next**.

Windows 98SE: Insert the provided driver disk. Select **Specify a location**, type in A:\Win98 and click **Next**.

Windows 2000: Click **Next** to install the driver.

Windows ME: Click **Next** to install the driver.

Windows 98SE: Click **Next** to install the driver.

Continue on Back 

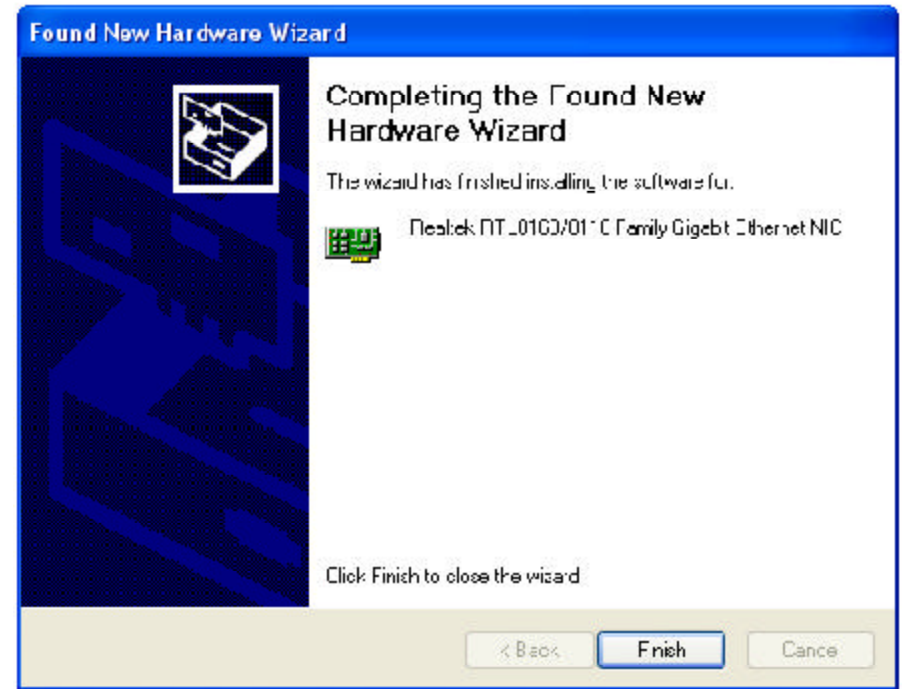
Step 4 Click **Continue Anyway** at the **Windows Logo Compatibility** message. **Step 5** Click **Finish**. Restart your computer.



Windows 2000: Click **Yes** to continue.

Windows ME: Insert the **Windows ME** CD-ROM and click **OK**.

Windows 98SE: Insert the **Windows 98SE** CD-ROM and click **OK**.



Windows 2000: Click **Finish**. Restart your computer.

Windows ME: Click **Finish**. Restart your computer.

Windows 98SE: Click **Finish**. Restart your computer.

Section 3

Technical Specifications

General	
Standards:	IEEE 802.3 10Base-T Ethernet IEEE 802.3u 100Base-TX Fast Ethernet IEEE 802.3ab 1000Base-T Gigabit Ethernet IEEE 802.3x Flow Control
Protocol:	CSMA/CD
Data Transfer Rate:	Ethernet: 10Mbps (half), 20Mbps (full) Fast Ethernet: 100Mbps (half), 200Mbps (full) Gigabit Ethernet: 1000Mbps (half), 2000Mbps (full)
Topology:	Star
Network Cables:	Ethernet: 2-pair UTP Cat. 3, 4, 5, EIA/TIA-568 STP Fast Ethernet: 2-pair UTP Cat. 5, EIA/TIA-568 STP Gigabit Ethernet: 4-pair UTP Cat. 5, EIA/TIA-568 STP
LED Indicator:	Link, Activity
RJ-45 Port:	Auto MDI-II/MDI-X port
Physical and Environmental	
Power Consumption:	4.5 watts (max.)
Temperature:	Operating: -10° ~ 40° C, Storage: -10° ~ 70° C
Humidity:	Operating: 10% ~ 90%, Storage: 5% ~ 90%
Dimensions:	59 x 120 x 15 mm (W x D x H)
EMI:	FCC Class B, CE Mark B, VCCI-B

Section 4

Technical Support

E-mail: support@airlinkplus.com

Toll Free: 1-888-746-3238

Web Site: www.airlinkplus.com

Free Manuals Download Website

<http://myh66.com>

<http://usermanuals.us>

<http://www.somanuals.com>

<http://www.4manuals.cc>

<http://www.manual-lib.com>

<http://www.404manual.com>

<http://www.luxmanual.com>

<http://aubethermostatmanual.com>

Golf course search by state

<http://golfingnear.com>

Email search by domain

<http://emailbydomain.com>

Auto manuals search

<http://auto.somanuals.com>

TV manuals search

<http://tv.somanuals.com>