

A M A C O M

E Z D V D + R W



A M A C O M

E Z D V D + R W



**Copyrights:**

© 2002 Amacom Technologies Limited, all rights reserved.

Under the copyright laws, this manual may not be copied, in whole or in part, without the written consent of Amacom Technologies Limited. Your rights to the software are governed by the accompanying software license agreement.

**Trademarks:**

The stylised "Amacom" logo, Amacom and EZDVD+RW are either registered trademarks or trademarks of Amacom Technologies Limited in the United Kingdom and/or other countries.

Microsoft and Windows are either registered trademarks or trademarks of Microsoft Corporation in the United States and/or other countries.

Apple, Macintosh, Firewire and Mac are either registered trademarks or trademarks of Apple Computer, Inc., in the United States and/or other countries.

Certain other product names, brand names and company names may be trademarks or designations of their respective owners.

**Changes:**

The material in this document is for information only and subject to change without notice. While reasonable efforts have been made in the preparation of this document to assure its accuracy, Amacom assumes no liability resulting from errors or omissions in this document, or from the use of the information contained herein. Amacom reserves the right to make changes or revisions in the product design or the product manual without reservation and without obligation to notify any person of such revisions and changes.

**Legal Disclaimer:**

Amacom Technologies Limited accepts no responsibility for any data loss or other problems that may occur as a result of using this product, regardless of the cause. Users should ensure that they run Anti-Virus software on all supplied software or drivers and that they have recent backup of all important data.

Amacom Technologies Limited makes no guarantee about the compatibility of discs using this drive and all discs created should be tested prior to distribution.

Mention of third-party products is for informational purposes only and constitutes neither an endorsement nor a recommendation. Amacom Technologies Limited assumes no responsibility with regard to the performance or use of these products.

**Federal Communications Commission Radio Frequency Interference Statement (FCC)**

**WARNING:** Changes or modifications to this unit not expressly approved by the party responsible for compliance could void the user's authority to operate the equipment. This equipment has been tested and found to comply with the limits for a Class B digital device, pursuant to Part 15 of the FCC Rules. These limits are designed to provide reasonable protection against harmful interference when the equipment is operated in a commercial environment. This equipment generates, uses, and can radiate radio frequency energy, and if not installed and used in accordance with the instructions, may cause harmful interference to radio communications. However, there is no guarantee that interference will not occur in a particular installation. If this equipment does cause harmful interference to radio or television reception, which can be determined by turning the equipment off and on, the user is encouraged to correct the interference by one of the following measures:

- Reorient or relocate the receiving antennas.
- Increase the separation between the equipment and the receiver.
- Connect the equipment into an outlet on a circuit different from that to which the receiver is connected.
- Consult the reseller or an experienced radio/TV technician for help.

Shielded cables and I/O cards must be used for this equipment to comply with the relevant FCC regulations. This device complies with Part 15 of the FCC rules. Operation is subject to the following two conditions: (1) this device may not cause harmful interference, and (2) this device must accept any interference received, including interference that may cause undesired operation.

**Canada Compliance Statement:**

This Class A digital apparatus meets all requirements of the Canadian Interference – Causing Equipment Regulations.

**Manufacturer's Declaration for CE Certification:**

We, Amacom, solemnly declare that this product conforms to the following European standards:

Class B EN60950, EN55022, EN50082-1, EN60555-2

With reference to the following conditions:

73/23/EEC Low Voltage Directive

89/336/EEC EMC Directive

**Laser Products:**

This equipment is certified to comply with DHHS Rule 21 CFR Chapter I, subchapter J in effect as of date of manufacture. This equipment is classified as a Class I Laser product and no hazardous laser radiation is emitted outside the drive.

<b>CONTENTS</b>	5
<b>PRECAUTIONS</b>	6
<b>GETTING STARTED</b>	6
What is DVD+RW	6
Copyright Warning	7
Unpacking the EZ DVD+RW	7
Setting up the Hardware	8
<b>DEVICE DRIVER INSTALLATION</b>	8
USB 2.0	8
- Win98/SE	8
- WinME/2000/XP	9
- Mac OS 9.1 and above	9
FireWire	9
- PC All Windows OSes	9
- Mac OS 9.1 and above	10
<b>ADDITIONAL SOFTWARE INSTALLATION</b>	10
Easy CD Creator	10
- For PC	10
Toast Lite	10
- For Mac	10
VideoWave Movie Creator	11
- For PC	11
DVD PlayBack Software	10
- For PC	10
<b>USING YOUR EZDVD+RW</b>	11
Inserting Discs	12
Emergency Ejection of Discs	12
Reading Discs	12
Playing Audio CDs through the HeadPhone Socket	12
Playing Audio CDs through the Phono Sockets	12
Writing Discs	12
<b>TROUBLESHOOTING</b>	12
System Requirements	12
Guidelines	12
<b>CONTACT DETAILS</b>	20

## PRECAUTIONS

---

The drive you have just purchased includes a laser diode device, which classifies it as a "Laser Class I" product. This laser is not dangerous for the user under normal operating conditions. However, we strongly advise you not to place any reflective objects in the disc loading system, due to the risk of exposure to laser emissions that may be reflected by such objects.

Always follow the basic precautions listed below to use your Amacom drive safely and correctly. Following these guidelines will help to avoid the possibility of personal injury to yourself or others, as well as to prevent damage to your device and other computer equipment. These precautions include, but are not limited to, the following:

### Health and Safety Precautions:

NOTE: Your drive is equipped with laser diodes. Due to the possibility of potentially dangerous laser radiation, only qualified persons are authorized to carry out maintenance on this device.

- Read this User Manual carefully, and ensure that you follow the instructions correctly when setting up the device.
- Do not look directly or indirectly at the laser diode, even when the device is not in operation.
- Do not open your drive or attempt to disassemble or modify it. This will invalidate your warranty.
- Never insert any metallic object into the drive, as this may present a risk of electrical shock, fire or short-circuiting.
- Amacom's products contain no user-serviceable parts. If your product appears to be malfunctioning, you must return it to Amacom to be inspected by a qualified Amacom representative.
- Never expose your device to rain or use it near water or in damp or wet conditions.
- Never place containers on it containing liquids, which may spill into its openings.

### Handling Precautions:

- Do not expose the drive to temperatures outside the range 5° C to 45° C (41° F to 104° F). Doing so may damage the drive.
- Avoid placing your drive near a source of heat or exposing it to sunlight (even through a window).
- Always unplug the drive from the electrical outlet if there is a risk of lightning or if it will not be used for an extended period of time.
- Use only interface cables and mains adapters supplied by Amacom Technologies Limited, as otherwise damage may occur to your drive and/or your computer, invalidating your warranty.
- Do not place heavy objects on top of the drive or use excessive force on its buttons, connectors and tray.
- Always place your drive in a horizontal position on a flat, stable surface and away from the edge of the desk before using it.
- Always remove the media from the disc tray before transporting your drive.
- Never use excessive force on the disc loading system; discs should be inserted effortlessly into your drive.
- Protect your drive from excessive exposure to dust during use or storage.
- Use a soft, dry, lint-free cloth if you need to clean the outside of the drive. Use of chemical cleaning agents or abrasive cloths may cause damage to the drive.

Note: The drive's warranty may be invalidated as a result of failure to follow the precautions listed above.

## GETTING STARTED

---

Thank you for purchasing the Amacom® EZDVD+RW drive, the 6 in 1 functions of this drive will allow you to quickly and easily create and record your own data, audio and video discs on DVD+R, DVD+RW, CD-R or CD-RW discs. You can use the EZDVD+RW drive to archive data, create your own Audio CDs or make a DVD-Video of your home movies to share with friends and family.

The EZDVD+RW will also allow you to read CD-ROMs and DVD-ROMs, and allow the playback of Audio CDs and DVD-Video discs.

This User Manual will help you to become familiar with the EZDVD+RW drive features and show you how to set the drive up on your computer. Please read it carefully, as this will ensure that you fully benefit from the new features that the EZDVD+RW will offer you.

## WHAT IS DVD+RW?

---

DVD+RW has been developed from existing technologies such as rewritable CD technology and is an extension to the DVD Video and DVD-ROM technology that offers you the ability to create custom DVDs. The format was designed for beginners and experts to record video, photos and data onto a DVD disc.

### WHAT ARE THE BENEFITS OF USING DVD+RW?

DVD+RW is as easy to use as CDR/RW but offers a higher capacity per disc.

#### **DVD+RW can be used for storing large files or creating DVD Video discs.**

The DVD+RW discs can be used in almost any DVD compatible system. Whether it be a Computer or DVD Player.

**DVD+RW allows you to be creative with Music, Photos and Video. You can make your own movies with graphical, animated menus, special effects and soundtracks that you will easily be able to share with your friends and family.**

### WHAT CAN I USE DVD+RW FOR?

Your Amacom EZDVD+RW drive enables you to read CD-ROMs and Audio CDs, as well as DVD-ROM, DVD-Video, and DVD-Audio media. You can record your own CD-Rs or rewrite to CD-RW media, record to 4.7GB DVD+R/RWs.

DVD-R/RW 4.7GB discs, allow you can store up to two hours of video, 4,700 color photos, or as many as 500,000 documents. The DVD+R/RW discs you burn with your Amacom drive can be played on most DVD-ROM drives and DVD players. Your CD-RW media can be read in any MultiRead CD-ROM, CD-R, CD-RW, DVD-ROM, DVD-RAM, DVD+RW or DVD-RW drives.

You can use DVD+RW for;

- High Quality Presentations
  - Professional Video Compilations
  - Archiving/Backup
  - Home/Family Movies
  - Large Audio Compilations
- and much much more!

## COPYRIGHT WARNING

---

Copyright laws usually protect data, Audio and Video CDs and DVDs. Before you copy a CD or DVD in full or in part you should check the License Agreement that came with the software or with the publisher or manufacturer of the disc that you have permission to copy that disc. It is against the law to copy, use or distribute copyrighted material without the legal consent of the owner, and is punishable in a court law.

## UNPACKING THE EZDVD+RW

---

When you unpack your EZDVD+RW drive you should check the contents of the box against the list below. In the event that you are missing any of the items you should contact Amacom as soon as possible using one of the methods in the "Contacting Amacom" section of this manual.

- EZDVD+RW Drive
- USB 2.0 or Firewire Cable (depending on version purchased)
- Mains Cable
- Roxio Easy CD Creator Basic (PC Only)
- Roxio VideoWave Movie Creator (PC Only)
- Roxio Toast Lite (Mac OS Only)
- PowerDVD (PC Only)
- User Manual & Drivers CD
- 1 x Blank CD-R Disc
- 1 x Blank CD-RW Disc
- 1 x Blank DVD+R Disc
- 1 x Blank DVD+RW Disc
- Warranty Card

Once you have unpacked the contents of the box please continue to the "Setting Up The Hardware" section of this manual and follow the instructions to setup your new EZDVD+RW drives hardware.

## SETTING UP THE HARDWARE

---

### Setting Up The Hardware

1. Place the EZDVD+RW drive on a flat, stable surface and away from the desk edge.
2. Attach the mains cable to the rear of the EZDVD+RW.
3. Plug the mains cable into the wall socket and turn the wall socket switch on.
4. Switch on the EZDVD+RW drive using the switch on the rear of the unit.
5. Attach the interface cable supplied to the interface port on the rear of the EZDVD+RW drive, ensuring that it is pushed on firmly to prevent a loose connection.

Your hardware is now setup and you should consult the "Device Driver Installation" section of this manual that is relevant to your chosen interface and operating system.

## DEVICE DRIVER INSTALLATION

---

### USB 2.0

#### **PC - Windows 98 & Windows 98SE:**

1. Setup your hardware by following the instructions under the "Setting Up The Hardware" section of this manual.
2. Turn on your computer and wait for Windows® to finish loading.
3. Plug the USB cable into the USB port on your computer or hub, ensuring that it is pushed firmly in.
4. Windows will detect the insertion of the USB cable and ask you to install a device driver.
5. Insert the Amacom device driver CD that came with your EZDVD+RW Drive into your computers CD-Rom drive.
6. Ensure that the option for Windows® to search for a device driver is selected and click "Next".
7. Windows® will now search the Amacom driver CD for a device driver and when finished will prompt you to install the device driver that it found. Click "Ok" to continue.
8. Windows® will now install the device driver, during this installation Windows® may say that it cannot find a file and ask you to specify the location. If this error occurs change the location in the dialog box to "d:\usb2\" (without the quotes and where d is the drive letter of your CD-Rom) and click "Ok".
9. When Windows® has completed the installation of the device driver click "Finish".
10. Windows® will then detect a second device and ask you to install the device drivers for it. Repeat steps 6 to 9 to complete the installation of the device drivers.
11. You may be asked to restart your computer for the changes to take effect. If this happens click "Yes" and your computer will restart.

#### **PC - Windows ME, Windows 2000 & Windows XP:**

1. Setup your hardware by following the instructions under the "Setting Up The Hardware" section of this manual.
2. Turn on your computer and wait for Windows® to finish loading. You must log in as a user with Administrator privileges to install the Amacom device drivers (2000 and XP only).
3. Plug the USB cable into the USB port on your computer or hub, ensuring that it is pushed firmly in.
4. Windows will detect the insertion of the USB cable and install the device driver automatically.



**Mac - OS 9.1 & Above**

1. Setup your hardware by following the instructions under the "Setting Up The Hardware" section of this manual.
2. Turn on your computer and wait for Mac OS to finish loading.
3. The drivers required to use the Amacom drive are installed as part of the Roxio Toast installation. Before proceeding to the next step you should install Roxio Toast by following the instructions in the "Additional Software Installation" section of this manual.

Plug the USB cable into the USB port on your computer or hub, ensuring that it is pushed firmly in.

---

**FireWire****PC - Windows 98SE, Windows ME, Windows 2000 & Windows XP**

1. Setup your hardware by following the instructions under the "Setting Up The Hardware" section of this manual.
2. Turn on your computer and wait for Windows® to finish loading. You must log in as a user with Administrator privileges to install the Amacom device drivers (2000 and XP only).
3. Plug the Firewire cable into the Firewire port on your computer or hub, ensuring that it is pushed firmly in.
4. Windows will detect the insertion of the Firewire cable and install the device driver automatically.

**Mac - OS 9.1 & Above**

1. Setup your hardware by following the instructions under the "Setting Up The Hardware" section of this manual.
2. Turn on your computer and wait for Mac OS to finish loading.
3. The drivers required to use the Amacom drive are installed as part of the Roxio Toast installation. Before proceeding to the next step you should install Roxio Toast by following the instructions in the "Additional Software Installation" section of this manual.
4. Plug the Firewire cable into the Firewire port on your computer or hub, ensuring that it is pushed firmly in.

---

**ADDITIONAL SOFTWARE INSTALLATION**

---

**Roxio Easy CD Creator Basic - PC Only**

1. Insert the Roxio Easy CD Creator Basic installation CD into your CD drive.
2. The Roxio installation program should launch automatically and ask you if you want to install the software.
3. Click "Yes" and follow the on screen instructions on screen to complete the installation.

When the installation is finished you may be asked to reboot. You should answer Yes to this, as the software will not work otherwise.

You will find detailed User Manuals for Roxio Easy CD Creator Basic on the installation CD. We would advise all users to read these before using the software to ensure that they benefit from the full range of features available to them.

**Roxio VideoWave Movie Creator - PC Only**

1. Insert the Roxio VideoWave Movie Creator installation CD into your CD drive.
2. The Roxio installation program should launch automatically and ask you if you want to install the software.
3. Click "Yes" and follow the on screen instructions on screen to complete the installation.
4. When the installation is finished you may be asked to reboot. You should answer Yes to this, as the software will not work otherwise.

You will find detailed User Manuals for Roxio VideoWave Movie Creator on the installation CD. We would advise all users to read these before using the software to ensure that they benefit from the full range of features available to them.

---

**Roxio Toast Lite - Mac Only**

1. Insert the Roxio Lite installation CD into your CD drive.
2. The Roxio installation program should appear in a new window on the Desktop
3. Double click the installer icon and follow the on screen instructions on screen to complete the installation.
4. When the installation is finished you may be asked to reboot. You should answer Yes to this, as the software will not work otherwise.

You will find detailed User Manuals for Roxio Toast Lite on the installation CD. We would advise all users to read these before using the software to ensure that they benefit from the full range of features available to them.

### Cyberlink PowerDVD - PC Only

1. Insert the Cyberlink PowerDVD installation CD into your CD drive.
2. The Cyberlink installation program should launch automatically and ask you if you want to install the software.
3. Click "Yes" and follow the on screen instructions on screen to complete the installation.
4. When the installation is finished you may be asked to reboot. You should answer Yes to this, as the software will not work otherwise.

You will find detailed User Manuals for Cyberlink PowerDVD on the installation CD. We would advise all users to read these before using the software to ensure that they benefit from the full range of

## USING YOUR EZDVD+RW DRIVE

---

### Inserting Discs Into The Drive

1. Press the tray eject button in the bottom right hand corner of the drive once.
2. The tray will eject from the drive.
3. Place the disc that you want to use on to the tray, ensuring that it is placed with the label side facing upwards and located within the circular locating slot.
4. Do not push the tray back into the drive using your hand, you should always use the eject button by pressing it once to return the tray back into the drive.

5. Your disc is now ready for use.

### Emergency Ejection of Discs

1. Ensure that the power cable is disconnected from your EZDVD+RW unit
2. Place a straightened out paperclip into the small hole situated at the front of the unit.
3. The tray should eject and you will now be able to remove any discs that were stuck inside the unit.

## Reading Discs

**CD-ROMs & DVD-ROMs** - You should follow the instructions in the user manual that accompanies the software for details on how to install or run the program.

**Audio CDs** - When these are inserted into the drive the disc may automatically launch an Audio CD playback program like Windows Media Player or Real Player and start playback automatically. If this is not the case you will need to run an Audio CD playback program manually or possibly install one if your computer does not have one installed by default. You can find more information on Audio CD playback applications using any good search engine.

**DVD-Videos** - To playback DVD videos on your computer you will need to use a software or hardware decoder to watch the film. Amacom supply a software decoder called PowerDVD (PC Only) with the EZDVD+RW drive, which when installed will allow the playback of DVD movies on your computer. Apple Macintosh users will be able to use the Apple DVD Player that is available from Apple's website.

## Writing Discs

There are many different types of discs that can be created and recorded using the EZDVD+RW and the supplied software.

To ensure that you fully benefit from the multitude of options available, Amacom recommends reading the online user manuals that accompany the software on their installation CDs.

## TROUBLESHOOTING

---

### System Requirements - PC

Operating Systems:  
Windows®98 Second Edition, Windows® Millennium,  
Windows® 2000, and Windows® XP

Minimum Computer System Requirements:  
Pentium® Compatible 350mhz, 64MB RAM.

Recommended Computer:  
Pentium® PIII 500mhz, 128MB RAM

Disk Space/Drive:  
350 MB for application, 1GB working space (6GB recommended).

4x or Higher CDROM Drive (for driver/software installation)

Graphics Card:  
SVGA Video Card with at least 4MB Video RAM  
Minimum display resolution of 1024x768 at 16 bit color

Interfaces:  
SBP2 Compliant IEEE 1394 FireWire Controller  
OR  
USB 2.0 Compliant USB Controller

## System Requirements - Mac

Operating Systems:  
Mac OS 9.1 or Higher

Minimum Computer System Requirements:  
Apple iBook™, iMac™ or Power Macintosh™

Disk Space/Drive:  
350 MB for application, 1GB working space (6GB recommended).

4x or Higher CDROM Drive (for driver/software installation)

Graphics Card:  
Minimum display resolution of 1024x768 at 16 bit color.

Interfaces:  
SBP2 Compliant IEEE1394 FireWire Controller  
OR  
USB 2.0 Compliant USB Controller

---

## Guidelines

Follow these guidelines to ensure optimal and reliable performance of your EZDVD+RW Drive.

### USB 2.0 Guidelines

#### Do's:

- You can connect and disconnect your USB cable while your computer is on if you are using a Mac® or running Windows® 98, 98SE, ME, 2000 or XP. (To prevent any data loss, stop the EZDVD+RW before disconnecting the interface cable from the computer or EZDVD+RW).
- NOTE: PC users must stop the USB cable by using the icon in the system tray. Mac® users should select the EZDVD+RW and drag the disk onto the wastebasket icon.
- You can optimise your USB EZDVD+RW drives performance by disconnecting other USB devices when using your USB EZDVD+RW. The performance of all USB devices decreases as additional USB devices are connected.
- You can ensure maximum performance by connecting your EZDVD+RW USB cable directly to one of the USB connections on your computer instead of to a USB hub or keyboard.
- You can avoid some system lockups by waiting at least 30 seconds after connecting or disconnecting any USB device. (This allows the system to re-enumerate the USB bus). Do not connect, disconnect or use any other USB device during this time.

**Don'ts:**

- Do not connect or disconnect any USB device while the EZDVD+RW is transferring information – data loss will result! To prevent any data loss, stop the EZDVD+RW before disconnecting the interface cable from the computer or EZDVD+RW.
- Do not use any USB cables with your EZDVD+RW other than Amacom® cables. Never use a USB extension cable with your USB EZDVD+RW - data loss may result!

NOTE: If the amber activity light is blinking, the EZDVD+RW is transferring data. Wait to connect or disconnect any other USB device until the activity light stops blinking.

Do not connect more than two USB devices to a single computer. (More than two USB devices will significantly reduce performance).

---

**FireWire Guidelines®**

Follow these guidelines to ensure optimal and reliable performance of your Amacom® EZDVD+RW drive.

**Do's:**

- You can connect and disconnect your Firewire® cable while your computer is on if you are using a Mac® or running Windows® 98SE, ME, 2000 or XP. (To prevent any data loss, stop the EZDVD+RW before disconnecting the interface cable from the computer or EZDVD+RW).
  - You can ensure maximum performance by connecting your EZDVD+RW Firewire® cable directly to one of the Firewire® connections on your computer instead of to other Firewire® devices.
  - You can use the EZDVD+RW Firewire® cable with SBP-2 compliant controllers. The EZDVD+RW is designed to work on SBP-2 compliant controllers as a bus-powered device. Contact the manufacturer of your computer if you do not know the type of Firewire® controller in your computer.
- NOTE: PC users must stop the Firewire® cable by using the icon in the system tray. Mac® users should select the EZDVD+RW and drag the disk onto the wastebasket icon.
- You can optimise your Firewire® EZDVD+RW drives performance by disconnecting other Firewire® devices when using your Firewire® EZDVD+RW. The performance of all Firewire® devices decreases as additional Firewire® devices are connected.

**Don'ts:**

- Do not connect or disconnect any Firewire® device while the EZDVD+RW is transferring information – data loss will result! To prevent any data loss, stop the EZDVD+RW before disconnecting the interface cable from the computer or EZDVD+RW.
- Do not use any Firewire cables with your EZDVD+RW other than Amacom® cables.

NOTE: If the amber activity light is blinking, the EZDVD+RW is transferring data. Wait to connect or disconnect any other Firewire® device until the activity light stops blinking.

---

## Troubleshooting

**CAUTION!** The USB EZDVD+RW cable is designed to the latest USB specification. However, there are some USB devices (including controller chips and hubs) currently available on the market that do not conform to the USB standard. If you experience problems after connecting the EZDVD+RW drive, your system may contain a non-compliant USB controller. Contact the manufacturer of the USB controller or your computer for possible solutions.

### The EZDVD+RW Icon Does Not Appear on a Mac® OS Desktop:

- If you did not reboot your computer after installing the Amacom® drivers, do so now.
- Check all connections.
- Make sure the drive system is receiving power.
- Make sure you are using USB cables supplied by Amacom.
- Make sure the Amacom® drivers are installed. The Amacom® software CD shipped with your EZDVD+RW includes drivers required for the USB cable. Restart after running the Amacom® drivers installer.
- If you are connected to a USB hub, ensure the hub is connected correctly and has power.
- Try connecting the EZDVD+RW drive directly to one of the USB connections on your computer, rather than a USB hub or keyboard.
- If the problem continues, there may be an extension conflict on your system. Please consult the Amacom® web site for additional troubleshooting information.

### The Flip2disk® Is Not Assigned a Drive Letter under Windows®:

- Check all connections.
- Make sure the drive system is receiving power.
- Make sure you are using USB cables supplied by Amacom®.
- If you are connected to a USB hub, ensure the hub is connected correctly and has power.
- Check your BIOS to ensure USB is enabled. Refer to your computer's User's Guide or manual for directions.
- Try connecting the EZDVD+RW drive directly to one of the USB connections on your computer, rather than a USB hub or keyboard.
- Check to see if your USB controller is enabled and is working correctly. This can be done by looking under "Device Manager" for USB controllers. If you see an exclamation mark or red X next to any of your USB controllers or if they are not listed at all, there is a problem with the USB controller and you should contact the

### EZDVD+RW USB Drive Performance Seems Slow:

Other USB devices connected at the same time as the EZDVD+RW drive can affect the EZDVD+RW drives performance, especially digital cameras or scanners that are processing large amounts of data. If you are using a hub to connect several devices to your computer, disconnect the other devices and connect the device directly to either of the computer's USB ports.

Your EZDVD+RW Drive Stops Responding (Locks up), or Information Gets Lost or Corrupted While You Are Saving or Copying Files:

The problem is probably due to a non-compliant USB controller chip or other USB device on your computer system. Try the following suggestions:

- Carefully follow the USB Guidelines. They are designed to help you avoid some of the problems caused by non-compliant USB devices.
- Upgrade your system software to Windows 98 Second Edition. This version of Windows 98 includes USB driver upgrades that fix most of the problems associated with USB controllers and motherboards.
- Upgrade your system software to Windows 98 Second Edition. This version of Windows 98 includes USB driver upgrades that fix most of the problems associated with USB controllers and motherboards.
- Do not connect or disconnect any USB device while the EZDVD+RW drive is transferring information. Data loss will result!

**CAUTION!** USB devices (including controller chips, hubs, cables, cards, mice, joysticks, and peripherals) that do not comply with the USB specification may cause system lockups or possible data loss when used with your EZDVD+RW USB drive. If you are not sure that a USB device complies with the latest USB specification, contact the manufacturer of the device.



## The EZDVD+RW USB Drive Does Not Work on an Older Laptop Computer:

Some older laptops use a USB port called an "Open Host" that is not compliant with the latest USB specification. If your laptop has an "Open Host" USB port, your EZDVD+RW USB drive may not be assigned a drive letter when connected to the laptop. Try following the USB Guidelines. They are designed to help you avoid some of the problems caused by non-compliant USB devices. If you continue to have problems, contact the manufacturer of your laptop computer for additional information.

---

## Troubleshooting For Firewire®

### The EZDVD+RW Icon Does Not Appear on a Mac® OS Desktop:

- If you did not reboot your computer after installing the EZDVD+RW drivers, do so now.
- Check all connections.
- Make sure the EZDVD+RW is receiving power. If you are using a 4 pin connector, make sure your power supply is connected and working. If you are using a 6 pin connector make sure the green power light is on.
- If the problem continues, there may be an extension conflict on your system. Please consult the Amacom® web site for additional troubleshooting information.
- Make sure the Amacom® drivers are installed. The Amacom® software CD shipped with your EZDVD+RW includes drivers required for the Firewire® cable. Restart after running the Amacom® drivers installer.
- If you are connected to a Firewire® repeater/hub, ensure it is connected correctly and has power.
- Try connecting the EZDVD+RW Firewire® cable directly to one of the Firewire® connections on your computer, rather than a Firewire® device.

It may be because there are other bus-powered devices connected and there is not enough available power for the EZDVD+RW. If this condition exists try the following:

- Disconnect other Firewire® devices from the computer.
- Connect the AC adapter to the other device(s).

**NOTE: To prevent data loss, do not plug in additional Firewire® devices while any Firewire® device is in use.**

## **Your EZDVD+RW Stops Responding (Locks up), or Information Gets Lost or Corrupted While You Are Saving or Copying Files:**

### **PC Users:**

The problem is probably due to a Firewire® controller chip or other Firewire® device on your computer system that is not SBP-2 compliant. Try the following suggestions:

- Carefully follow the Firewire® Guidelines. They are designed to help you avoid some of the problems caused by non-compliant Firewire® devices.
- Do not disconnect the EZDVD+RW drive while it is transferring information—data loss will result!
- If the problem still continues, you may want to upgrade the Firewire® controller in your computer system to one that complies with the FireWire SBP-2 specification. In this case, contact your computer manufacturer for help.

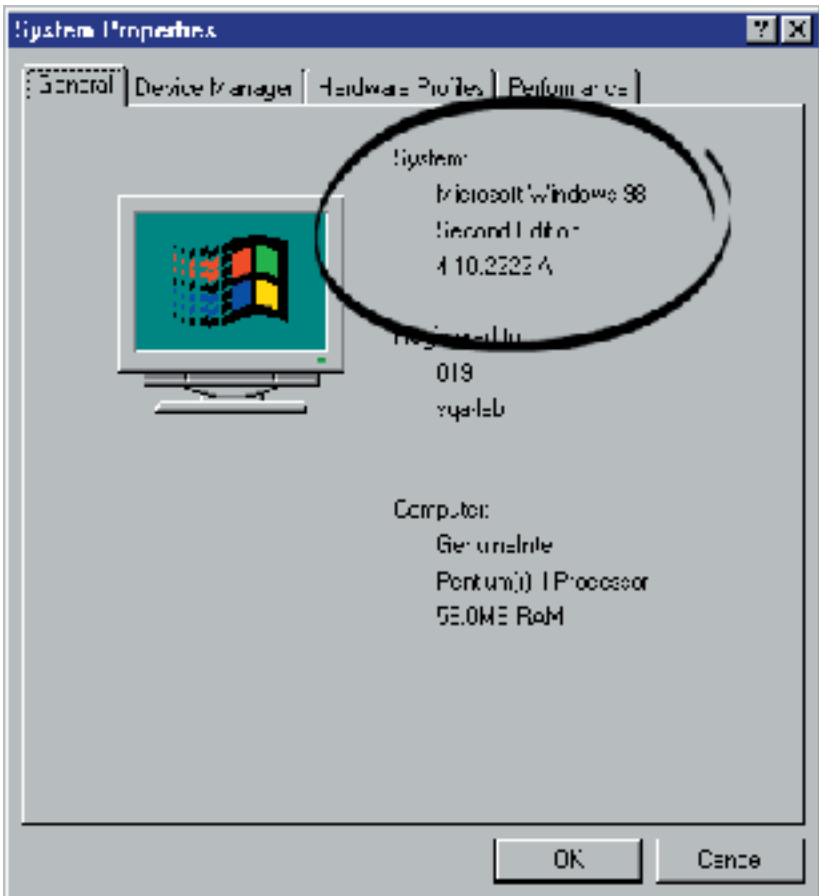
**You must have Windows 98 SE, Me, Windows 2000 or Windows XP to use the EZDVD+RW Firewire® drive.**

**CAUTION! Firewire® devices (including controller chips, cables, cards, and peripherals) that do not comply with the Firewire® specification may cause system lockups or possible data loss when used with your EZDVD+RW Firewire® drive. If you are not sure that a Firewire® device complies with the latest Firewire® specification, contact the manufacturer of the device.**

## Identifying Your Version of Windows® 98:

Your EZDVD+RW Firewire® drive will only run under Windows 98 Second Edition. Follow these instructions, if you are unsure which version of Windows 98 is installed on your computer:

- Right click on the icon for My Computer and select Properties.
- Click the tab for General.
- Your version of Windows 98 is listed in the upper right hand corner of the window. If the System information does not read "Microsoft Windows 98 Second Edition 4.10.2222A," you will need to update your operating system.



**CONTACT DETAILS**

---

**AMACOM****UK & Europe:**

Web site: [www.amacom-tech.com](http://www.amacom-tech.com)

## E-mail:

Technical Support – [technical@amacom-tech.com](mailto:technical@amacom-tech.com)

Sales Enquiries – [sales@amacom-tech.com](mailto:sales@amacom-tech.com)

General Enquiries – [enquiries@amacom-tech.com](mailto:enquiries@amacom-tech.com)

Telephone: +44 (0)20 8993 7373

Facsimile: +44 (0)20 8993 2141

Post:- Amacom Technologies Limited, 7 Western Avenue Business Park,

## Free Manuals Download Website

<http://myh66.com>

<http://usermanuals.us>

<http://www.somanuals.com>

<http://www.4manuals.cc>

<http://www.manual-lib.com>

<http://www.404manual.com>

<http://www.luxmanual.com>

<http://aubethermostatmanual.com>

Golf course search by state

<http://golfingnear.com>

Email search by domain

<http://emailbydomain.com>

Auto manuals search

<http://auto.somanuals.com>

TV manuals search

<http://tv.somanuals.com>