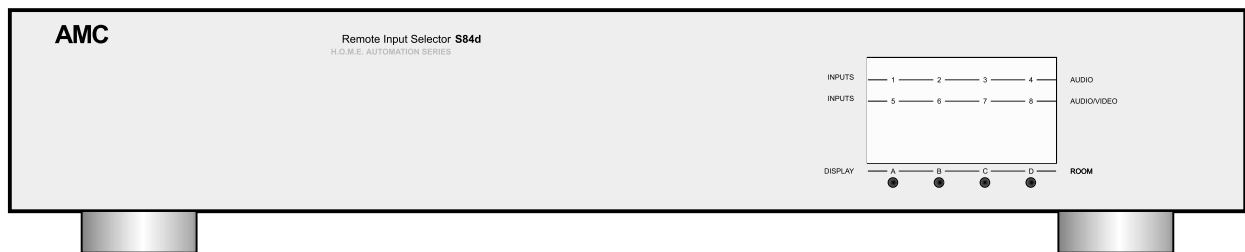


AMC S84d

REMOTE INPUT SELECTOR



INSTRUCTIONS FOR INSTALLATION AND OPERATION



CAUTION: TO REDUCE THE RISK OF ELECTRIC SHOCK, DO NOT REMOVE COVER (OR BACK). NO USER-SERVICEABLE PARTS INSIDE. REFER SERVICING TO QUALIFIED SERVICE PERSONNEL



AFIN DEVIET UN CHOC ELECTRIQUE ET LES CONSEQUENCES GRAVES QUI POURRAIENT EN RESULTER, TENEZ PAS D'OUVRIR L'APPAREIL ET DE TOUCHER AUX COMPOSANTS INTERNES SANS LA PRESENCE D'UNE PERSONNE QUALIFIEE.



PARA REDUCIR EL RIESGO DE SACUDIDAS ELECTRICAS, NO DEBERA QUITARSE LA TAPA (NI PARTE POSTERIOR). CONSULTESE AL PERSONAL CAPACITADO PARA LAS REPARACIONES INTERNAS.

WARNING: TO PREVENT FIRE OR ELECTRIC SHOCK, DO NOT EXPOSE THIS APPLIANCE TO RAIN OR MOISTURE.
ADVERTENCIA: PARA EVITAR EL RIESGO DE INCENDIO O SACUDIDA ELECTRICA, NO DEBERA EXPONERSE ESTE APARATO A LA LLUVIA O HUMEDAD.

CAUTION: TO PREVENT ELECTRIC SHOCK DO NOT USE THIS (POLARISED) PLUG WITH AN EXTENSION CORD, RECEPTACLE OR OTHER OUTLET UNLESS THE BLADES CAN BE FULLY INSERTED TO PREVENT BLADE EXPOSURE..

ATTENTION: POUR PREVENIR LES CHOCS ELECTRIQUES NE PAS UTILISER CETTE FICHE POLARISEE AVEC UN PROLONGATEUR. UNE PRISE DE COURANT OU UNE AUTRE SORTIE DE COURANT, SAUF SILES LAMES PEUVENT ETRE INSEREES A FOND SANS EN LAISSER AUCUNE PARTIE FOND SANS EN LAISSER AUCUNE PARTIE A DECOUVERT.

PRECAUCION: PARA EVITAR SACUDIDAS ELECTRICAS, NO DEBERA UTILIZARSE ESTA CLAVIJA POLARIZADA CON UN CORDON DE PROLONGACION, RECEPTACULO U OTRO TIPO DE SALIDA A MENOS QUE SE HAYAN INSERTASO COMPLETAMENTE LAS LENGÜETAS PARA EVITAR SU EXPOSICION.

NOTE: Some AMC products are equipped with dual or multi-voltage transformers (which is indicated on the back panel). If you wish to change the voltage, please bring your unit to an authorised AMC service technician for internal conversion.

ATTENTION: Quelques pièces AMC sont munies de transformateurs à double ou à multi-voltage (indiqué au panneau arrière). Si vous voulez changer le voltage, veuillez apporter votre appareil au fournisseur de AMC pour le transformer.

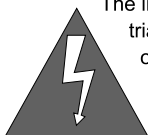
ZUR BEACHTUNG: Einige AMC Geräte sind mit Umschaltern für unterschiedliche Netzspannungen ausgerüstet (Ein Vermerk auf der Rückseite weist darauf hin).

Die Anpassung, wenn notwendig, muß von einem qualifizieren Techniker in einer AMC Servicestation vorgenommen werden.

NOTA: Ciertos componentes de AMC están dotados de transformadores de doble tensión o de varias tensiones (lo que se indica en el panel posterior). Si se desea cambiar la tensión, sírvanse llevar el aparato a un técnico autorizado por AMC para su conversión interna.

NOTE TO CATV systems installer: This reminder is provided to call the CATV system installer's attention to Article 820-22 of the NEC that provides guidelines for proper grounding and, in particular, specifies that the cable ground shall be connected to the grounding system of the building, as close to the point of cable entry as practical.

NOTA PARA EL INSTALADOR DE ANTENAS DE TELEVISION COLECTIVAS: La presente advertencia se provee para llamar la atención del instalador al Artículo 820-22 de NEC (Código Eléctrico Nacional) donde se facilitan las directrices para la pertinente puesta a tierra y que especifica en particular que el conductor a tierra del cable debe conectarse al sistema de conexión a tierra del edificio, lo más proximo posible al punto de entrada del cable.



The lightning flash with arrowhead, within an equilateral triangle, is intended to alert the user of the presence of un-insulated "dangerous voltage" within the product's enclosure; that may be of sufficient magnitude to constitute a risk of electric shock to persons.



The exclamation point within an equilateral triangle is intended to alert the user of the presence of important operating and maintenance (servicing) instructions in the literature accompanying the appliance.

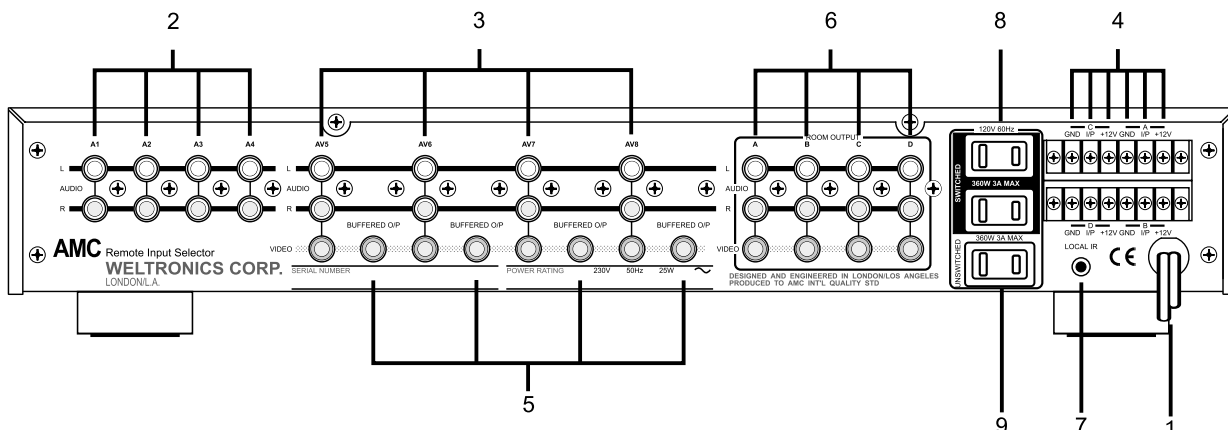
APPLICATION AND FEATURE LIST

The AMC model S84d Remote Source Selector is designed for room to room type of applications, providing remotely controlled distribution of high quality audio and video signals throughout a house, through the infrared remote control of centrally located audio and video components.

- Eight stereo audio inputs, four composite video inputs and four infrared code inputs.
- Audio and video outputs for up to four rooms.
- Independent volume adjustment for each room.
- Independent source selection for each room.
- Independent audio mute for each room.
- High power infrared transmitter built_in.
- Remotely controlled switched power outlet socket.
- Buffered video outputs.
- Local infrared transmitter output.
- THD less than 0.01%.
- Audio S/N better than 95dB.
- Video Bandwidth from DC to 18MHz.
- 75 OHM output impedance for all audio and video outputs.

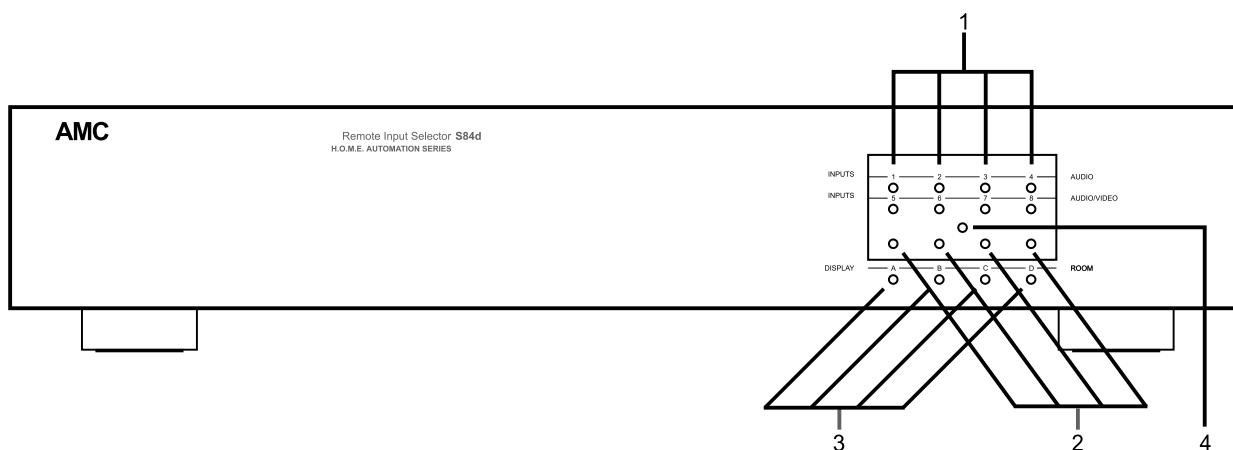
REAR PANEL CONNECTIONS/FRONT PANEL CONTROLS

REAR PANEL



- | | |
|---|---|
| <ol style="list-style-type: none"> 1. AC LINE CORD 2. AUDIO INPUTS, A1 Through A4 3. AUDIO/VIDEO INPUTS, AV5 Through AV8 4. INFRARED CODE INPUTS, ROOMS A Through D | <ol style="list-style-type: none"> 5. BUFFERED VIDEO OUTPUTS 6. ROOM OUTPUTS A Through D 7. LOCAL I/R OUTPUT 8. SWITCHED CONVENIENCE AC OUTLETS 9. UNSWITCHED CONVENIENCE AC OUTLETS |
|---|---|

FRONT PANEL



- | | |
|--|--|
| <ol style="list-style-type: none"> 1. INPUT SELECTOR LED'S 2. ROOM LED'S A Through D | <ol style="list-style-type: none"> 3. ROOM SELECTOR SWITCHES 4. INFRARED TRANSMITTER |
|--|--|

REAR PANEL CONNECTIONS

1. AC LINE CORD

Plug the AC line cord into a nearby wall outlet that provides the correct AC power line voltage, or into an un-switched convenience outlet on any AMC product.

2. AUDIO INPUTS, A1 Through A4

These inputs are for connection to audio signal sources such as a CD Player, FM Tuner, Cassette Tape Recorder, etc.. Connections are made via RCA jacks.

3. AUDIO/VIDEO INPUTS, AV5 Through AV8

These inputs are for connections to audio/video products such as VCR's, Laser Disk Players, Satellite Receivers, etc.. All audio and video connections are made via RCA jacks.

4. INFRARED CODE INPUTS, ROOMS A Through D

These inputs are for connection to each room infrared receiver. There are three screw terminals for each of the 4 room inputs. Wiring of the twin shielded cable used to connect the remote I/R receiver to these inputs is as follows:- The shield of the cable should be connected to the terminal marked "GND", the red wire connected to the terminal marked "+12V" and the black wire connected to the terminal marked "I/P".

5. BUFFERED VIDEO OUTPUTS

Each video input (AV5 through AV8) has a buffered video output located next to the video input socket. With 75 ohm termination on this output, the input/output gain will be unity. Connections are made via RCA jacks.

6. ROOM OUTPUTS A Through D

Four room outputs for stereo audio and composite video are provided. The sound level of each room output is independently adjusted via the infrared remote control provided.

7. LOCAL I/R OUTPUT

The signal sent to the front panel I/R transmitter is also available via the 1/8", two terminal, mini jack on the rear panel. The output from this jack can provide sufficient current to drive an external LED for situations where remotely controlled equipment cannot see the infrared code sent out by the S84d I/R transmitter. For example, when the equipment is located in a shelved cupboard. Connections for this jack are as follows:- The anode of I/R LED must be connected to the tip of the jack and the cathode to the sleeve of the jack.

8. SWITCHED CONVENIENCE AC OUTLETS

There are 2 switched convenience AC outlets for 120V version and only one for 220V/230V/240V versions. These convenience AC outlets are controlled by the power ON/OFF button on the remote control.

9. UNSWITCHED CONVENIENCE AC OUTLETS

There is one un-switched convenience AC outlet for 120V version and none for 220V/230V/240V versions.

FRONT PANEL CONTROLS

The front panel LED display is used to view the status of the selected input of any room.

1. INPUT SELECTOR LEDS

There are 8 LEDs arranged in 2 rows, in the front panel display. These LEDs indicate the selected input (A1 through AV8) of each room. To view the selected input of any room, the appropriate room selector switch described in 3 below, must be operated.

2. ROOM LEDS A Through D

The 4 LEDs located at the bottom of the front panel display indicate which room has been selected by the room selector switches.

3. ROOM SELECTOR SWITCHES

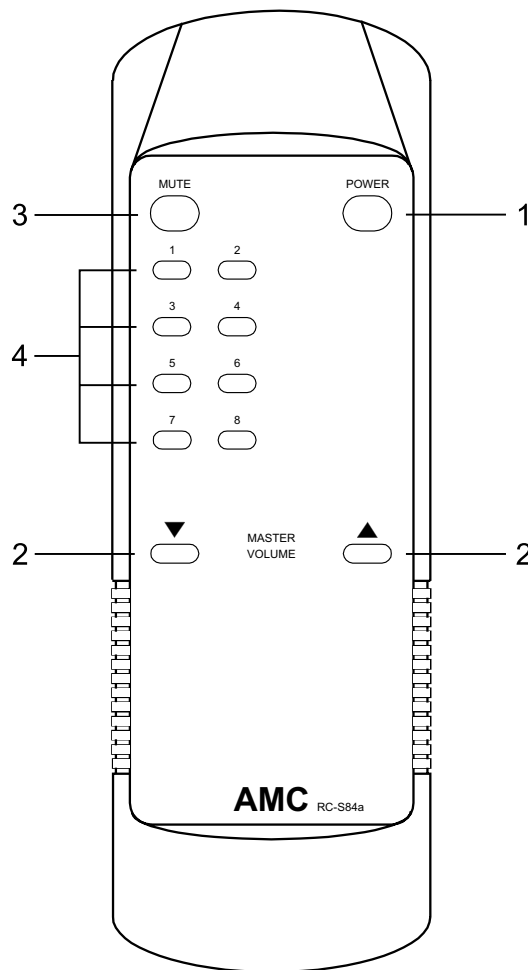
There are 4 room selector switches located behind the front panel, which are accessed through the 4 holes beneath the display window. These switches are operated by inserting the plastic rod (provided) through the access hole in the front panel and pressing gently. When any of these switches are operated, the appropriate room LED above it will light and the input selector LEDs will indicate which input has been selected by that room. To find out which input has been selected in another room, simply operate the appropriate room switch.

4. INFRARED TRANSMITTER

Hidden behind the front panel window is a high power I/R transmitter that transmits data received from any of the infrared code inputs.

REMOTE CONTROL

Note there are two types of remote control available for this model. However, only one of them will be supplied with the unit. Please verify the type of R/C attached with your unit, and refer to the corresponding instruction.



1. POWER

Pressing the green "POWER" button switches on the power to the convenience outlet sockets on the back of the S84a. Pressing the button again will switch off the power to the convenience outlet sockets on the back panel of S84a.

2. MASTER VOLUME

- △:VOLUME UP
- ▽:VOLUME DOWN

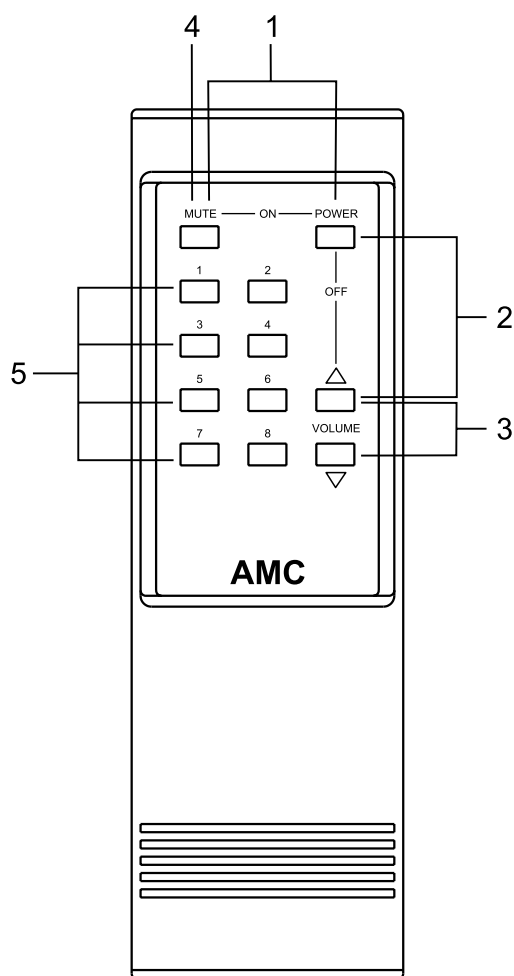
NOTE: Volume settings in all rooms are independent of each other.

3. MUTE

Pressing the "Mute" button will apply full mute to the audio. This function can be used as a "local off" and will not affect other rooms.

4. INPUT SELECTOR

These buttons select any one of the eight sources that are connected to the inputs of the S84a (A1 through AV8).



1. POWER ON

Pressing the green "POWER" button and the white "Mute" button, simultaneously, switches on the power to the convenience outlet sockets on the back of the S84d.

2. POWER OFF

Pressing the green "Power" button and the white "Volume Up" button, simultaneously, will switch off the power to the convenience outlet sockets on the back panel of S84d.

3. VOLUME

△:VOLUME UP

▽:VOLUME DOWN

NOTE: Volume settings in all rooms are independent of each other.

4. MUTE

Pressing the "Mute" button will apply full mute to the audio. This function can be used as a "local off" and will not affect other rooms.

5. INPUT SELECTOR

These buttons select any one of the eight sources that are connected to the inputs of the S84d (A1 through AV8).

SPECIFICATIONS

AUDIO INPUTS A1 Through AV8 and ROOM OUTPUTS A Through D

Inputs Impedence.....	R= 5 MEG C= 100pF
THD 20Hz-20KHz and SMPTE IMD.....	<0.01% at 3 Vrms
Inputs Sensitivity for 1V Output.....	150 mV
Input Overload.....	3.5 Vrms
Signal to Noise Ratio (Gain=1).....	95dB "A" wtd ref. 1V
Frequency Responce.....	20Hz-20KHz +/- 0.5dB
Output Impedence.....	75 OHM

VIDEO INPUTS and OUTPUTS AV5 Through AV8

Input Impedence.....	75 OHM
Input Level for Peak White.....	1V peak
Output Impedence (all output).....	75 OHM
Gain (From Video Inputs to Buffered Outputs and Room Outputs).....	Unity with 75 term. and room outputs
Frequency Responce.....	DC - 6MHZ +/-1dB DC -18Mhz +/-6dB
Max. Inputs Level.....	+/- 2V peak

INFRARED INPUTS and OUTPUTS

Max. Input Level.....	+5.5V
Min. Input Level.....	+3.5V
Polarity (Inputs and Outputs).....	Normally Low
Transmitted I/R Wavelength.....	950nm
Input Impedence.....	330 OHM
Local I/R Output Current (using GaAs I/R LED).....	100mA peak

OTHER

Dimensions (W X H X D).....	430 X 82 X 300mm
Net Weight.....	5.0Kgs (11 lbs.)
Power Consumption.....	15W for 120V/60Hz and 220V-240V/50Hz

Weltronics Corp. reserved the right to improve its products at any time. Specifications are subject to change without notice.

SAFETY INSTRUCTION

1. READ INSTRUCTIONS

All the safety and operating instructions should be read before the appliance is operated.

2. RETAIN INSTRUCTIONS

The safety and operating instructions should be retained for future reference.

3. HEED WARNINGS

All warnings on the appliance and in the operating instructions should be adhered to.

4. FOLLOW INSTRUCTIONS

All operating and use instructions should be followed.

5. WATER AND MOISTURE

The appliance should not be used near water - for example, near a bathtub, washbowl, kitchen sink, laundry tub, in a wet basement, or near a swimming pool, etc.

6. CARTS AND STANDS

The appliance should be used only with a cart or stand that is recommended by the manufacturer.

- 6A. An appliance and cart combination should be moved with care. Quick stops, excessive force, and uneven surfaces may cause the appliance and cart combination to overturn.



7. WALL OR CEILING MOUNTING

This equipment is not designed for use mounted on a wall or a ceiling.

8. VENTILATION

The appliance should be situated so that its location or position does not interfere with its proper ventilation. For example, the appliance should not be situated on a bed, sofa, rug, or similar surface that may block the ventilation openings, or placed in a built-in installation, such as bookcase or cabinet that may impede the flow of air through the ventilation openings.

9. HEAT

The appliance should be situated away from heat sources such as radiators, heat registers, stoves, or other appliances (including amplifiers) that produce heat.

10. POWER SOURCES

The appliance should be connected to a power supply only of the type described in the operating instructions or as marked on the appliance.

11. POWER-CORD PROTECTION

Power-supply cords should be routed so that they are not likely to be walked on or pinched by items placed upon or against them, paying particular attention to cords at plugs, convenience receptacles, and the point where they exit from the appliance.

12. CLEANING

The appliance should be cleaned only as recommended by the manufacturer.

13. NON USE PERIODS

The power cord of the appliance should be unplugged from the outlet when left unused for a long period of time.

14. OBJECT AND LIQUID ENTRY

Care should be taken so that objects do not fall and liquids are not spilled into the enclosure through openings.

15. SERVICING

The user should not attempt to service the appliance beyond that described in the operating instructions. All other servicing should be referred to qualified service personnel.

16. DAMAGE REQUIRING SERVICE

The appliance should be serviced by qualified service personnel when:

- The power-supply cord or the plug has been damaged; or
- Objects have fallen, or liquid has been spilled into the appliance; or
- The appliance has been exposed to rain; or
- The appliance does not appear to operate normally or exhibits a marked change in performance; or
- The appliance has been dropped, or the enclosure is damaged.

17. POWER LINES

(APPLIES TO TUNER AND RECEIVERS ONLY)

An outdoor antenna should be located away from power lines.

18. OUTDOOR ANTENNA GROUNDING

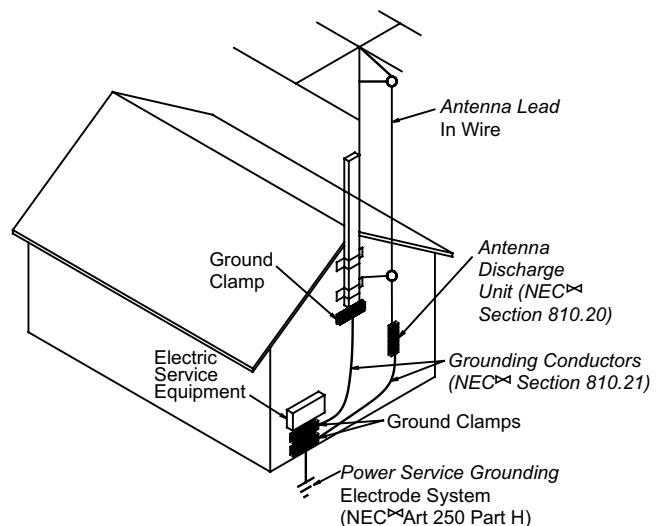
(APPLIES TO TUNER AND RECEIVERS ONLY)

If an outside antenna is connected to the receiver, be sure the antenna system is grounded so as to provide some protection against voltage surges and built up static charges.

Section 810 of the National Electrical Code, ANSI/NFPA No. 70-1984, provides information with respect to proper grounding of the mast and supporting structure, grounding of the lead-in wire to an antenna discharge unit, size of grounding conductors, location of antenna-discharge unit, connection to grounding electrodes, and requirements for the grounding electrode. See Figure.

- Use No. 10 AWG (5.3 mm²) copper, No. 8 AWG (8.4 mm²) aluminum, No. 17 AWG (1.0 mm²) copper-clad steel or bronze wire, or larger, as a ground wire.
- Secure antenna lead-in and ground wires to house with stand-off insulators spaced from 4-6 feet (1.22-1.83 m) apart.
- Mount antenna discharge unit as close as possible to where lead-in enters house.
- Use jumper wire not smaller than No.6 AWG (13.3 mm²) copper, or the equivalent, when a separate antenna-grounding electrode is used. See NEC Section 810-21(j).

Antenna Grounding According to the National Electrical Code



† National Electrical Code
Available from Library, book
stores, or National Fire Protection
Association (Batterymarch Park,
Quincy, MA 02269).

AMC 21-3004

WELTRONICS CORP.

LONDON/L.A.

AMC Web: <http://www.amchome.com>

PN: 21-4049*B

Free Manuals Download Website

<http://myh66.com>

<http://usermanuals.us>

<http://www.somanuals.com>

<http://www.4manuals.cc>

<http://www.manual-lib.com>

<http://www.404manual.com>

<http://www.luxmanual.com>

<http://aubethermostatmanual.com>

Golf course search by state

<http://golfingnear.com>

Email search by domain

<http://emailbydomain.com>

Auto manuals search

<http://auto.somanuals.com>

TV manuals search

<http://tv.somanuals.com>