

Overview

The MVP-TCS-52 Table Charging Station (**FG5966-1X**) is both a charging station and a direct power connection for the MVP-5200i Modero® Viewpoint® Widescreen Touch Panel. The charging station is available in either white (**FG5966-11**) or black (**FG5966-10**). For more information, please refer to the *Accessories* section of the MVP-5200i Modero Viewpoint Widescreen Touch Panel User Manual, available at www.amx.com.



FIG. 1 MVP-TCS-52 Table Charging Station (FG5966-10)

Specifications

MVP-TCS-52 Specifications	
Dimensions (HWD):	• 8.0" x 4.75" x 3.5" (20.32cm x 12.07cm x 8.89cm)
Weight:	• .65 lbs (.29 kg)
Rear Connector:	• 12-pin charging connector on bottom of device cradle.
Operating/Storage Environments:	<ul style="list-style-type: none"> • Operating Temperature: 0° C (32° F) to 40° C (104° F) • Operating Humidity: 20% - 85% RH • Storage Temperature: -20° C (-4° F) to 60° C (140° F) • Storage Humidity: 5% - 85% RH
Included Accessories	<ul style="list-style-type: none"> • MVP-TCS-52 Table Charging Station Installation Guide (93-5966-02) • PS3.0 Power Supply (FG423-30)
Other AMX Equipment:	<ul style="list-style-type: none"> • MVP-5200i Modero Viewpoint Widescreen Touch Panel - Gloss Black (FG5966-01) • MVP-5200i Modero Viewpoint Widescreen Touch Panel - Gloss White (FG5966-02) • MVP-WCS-52: Wall Charging Station (FG5966-1X)

Powering the MVP-TCS-52

The MVP-TCS-52 uses a PS3.0 power supply to provide direct power for the MVP panel both for standard function and for charging its internal battery.

1. Turn the device upside down and connect the terminal end of the PS3.0 power supply to the PWR connector on the bottom of the MVP-TCS-52.
2. To prevent wear on the power supply cord and assure that the device's base is in full contact with the table surface, press the cord into the locking groove running across the bottom of the device (FIG. 2).

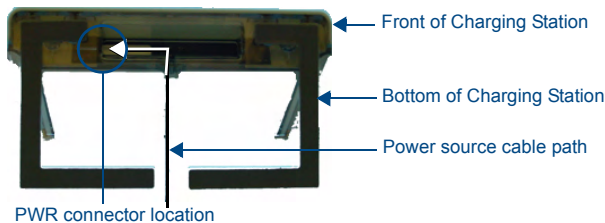


FIG. 2 Power source cable path for bottom of MVP-TCS-52

3. Provide power to the MVP-TCS by connecting the PS3.0 cord to an external power source.
4. Place the touch panel in the Charging Station cradle (FIG. 3), guiding it into place with the locking grooves on each side of the cradle (FIG. 4). When fully seated, the touch panel's charging station connector should be in contact with the Charging Station's charger pins.



FIG. 3 MVP-TCS-52 - Front view with MVP-5200i

Recharging

To recharge the MVP-5200i, slide the device into the Table Charging Station cradle bottom-first and make sure the device is fully seated in the Charging Station. The charger pins in the bottom of the cradle (FIG. 4) must be in contact with the connector on the bottom of the MVP-5200i for it to start recharging. The MVP panel will stop recharging automatically once the battery has achieved its maximum charge.

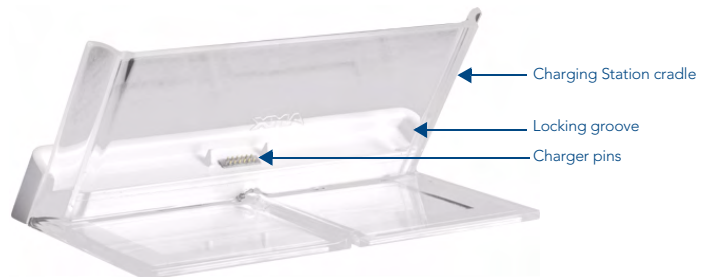


FIG. 4 MVP-TCS-52 - Rear view

Cleaning the MVP-TCS-52

You should clean the Table Charging Station after each day's use to maintain the device's appearance. Always use a clean cotton cloth and a spray bottle containing water or a vinegar-based cleaner, as alcohol-based cleaners can damage the device. Do not directly spray the device; instead, spray the cloth to prevent moisture from collecting on the charger pins. Do NOT use an abrasive of any type to clean the Table Charging Station, as this may permanently damage or remove the device's finish.

Free Manuals Download Website

<http://myh66.com>

<http://usermanuals.us>

<http://www.somanuals.com>

<http://www.4manuals.cc>

<http://www.manual-lib.com>

<http://www.404manual.com>

<http://www.luxmanual.com>

<http://aubethermostatmanual.com>

Golf course search by state

<http://golfingnear.com>

Email search by domain

<http://emailbydomain.com>

Auto manuals search

<http://auto.somanuals.com>

TV manuals search

<http://tv.somanuals.com>