



## Quick Installation Guide

### Wireless Printer Adapter

Model: WP-SA

---

#### INTRODUCTION

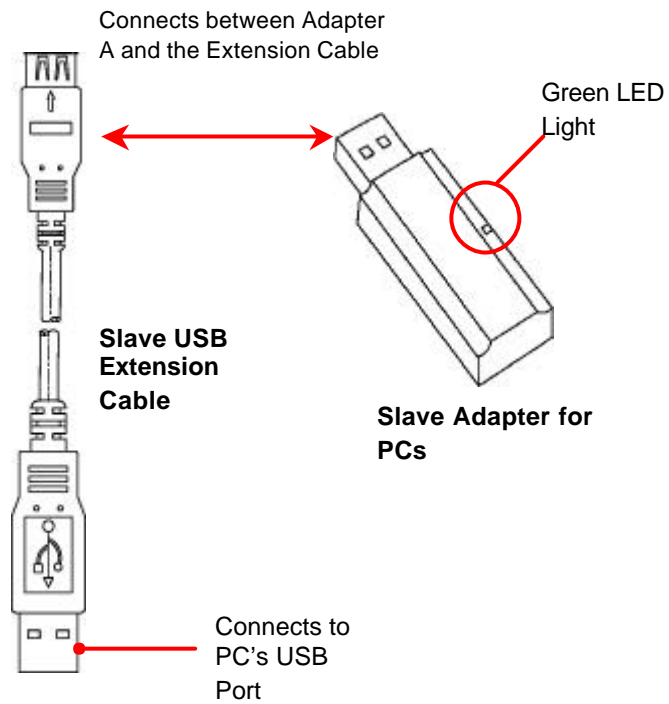
Thank you for purchasing AmbiCom's Wireless Printer Adapter. AmbiCom's Wireless Printer Adapter offers the ideal solution for wireless connectivity between common PCs and USB inkjet printers. The Wireless Printer Adapter enables the user to expand an existing Wireless Printer network installation to wirelessly connect up to 30 additional PC systems and laptops to a shared printer.

#### IMPORTANT

**This installation guide is intended for customers who have already purchased AmbiCom's Wireless Printer Kit (WP-KIT), which includes a Master Printer Adapter and Slave PC Adapter. In order to use the Wireless Printer Adapter (Slave), you will need a Master Printer Adapter (not included) installed for your Inkjet printer. The following procedures will guide you to add additional Slave PC Adapters to an existing AmbiCom Wireless Printer Network setup.**

**Make sure your printer's USB driver is installed before starting the following installation. Refer to the printer manufacturer's instructions to install the USB driver for your printer.**

## Product Illustrations

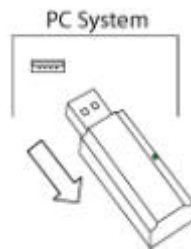


## Additional Slave PC Adapter Installation

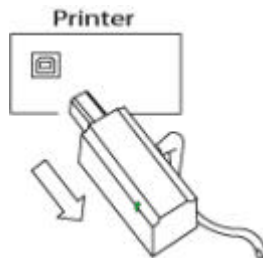
This section provides installation procedures for users with existing AmbiCom Wireless Printer setup to add additional Slave PC Adapter. You can add up to 30 Slave PC Adapters to one Master Printer Adapter. However, during normal operations, **only ONE Slave PC Adapter will be able to connect to the printer at a time.**

**Mac Users:** The instructions in this section apply to both PCs and Macs as long as you install the USB driver to your printer according to the printer manufacturer's instructions.

1. Power on the PC and printer.
2. If you have not already installed your printer's USB driver onto the PC in which you're installing the Slave PC Adapter, please follow the printer manufacturer's instructions to do so now.
3. Unplug previously paired Slave PC Adapters in the printer network.

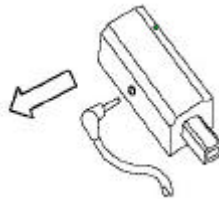


4. Unplug the Master Printer Adapter from the Printer's USB port.

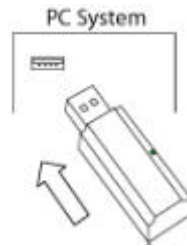


When the Master Printer Adapter is unplugged from the printer, it will flash once and then remain off temporarily.

5. Disconnect the AC Power plug from the Master Printer Adapter, leaving the power adapter connected to the power outlet.

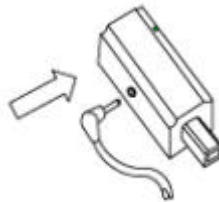


6. Plug the new Slave PC Adapter into an available USB port on the PC to be added to the Wireless Printer Network. The green LED light on the new Slave PC Adapter will blink once and then remain off.



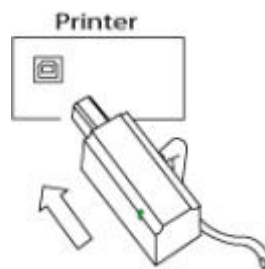
**New Slave PC Adapter**

7. Connect the AC power plug into Master Printer Adapter.



At this time, the green LED light on the Master Printer Adapter will blink once and remain off. When both Master Printer Adapter and Slave PC Adapter have detected each other, the LED lights on the Master Printer Adapter will blink continuously while the LED light on the Slave PC Adapter will turn on, indicating successful pairing.

8. Plug the Master Printer Adapter back into the printer's USB port.



9. Insert all other previously paired Slave PC Adapter into the PC's USB port again. Now you have successfully installed a Wireless Printer Network.

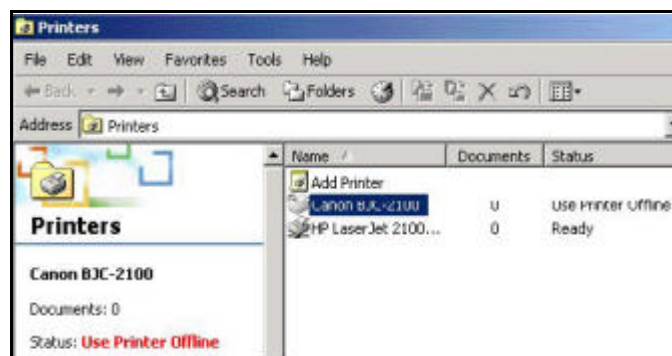
## INSTALLATION CONSIDERATIONS

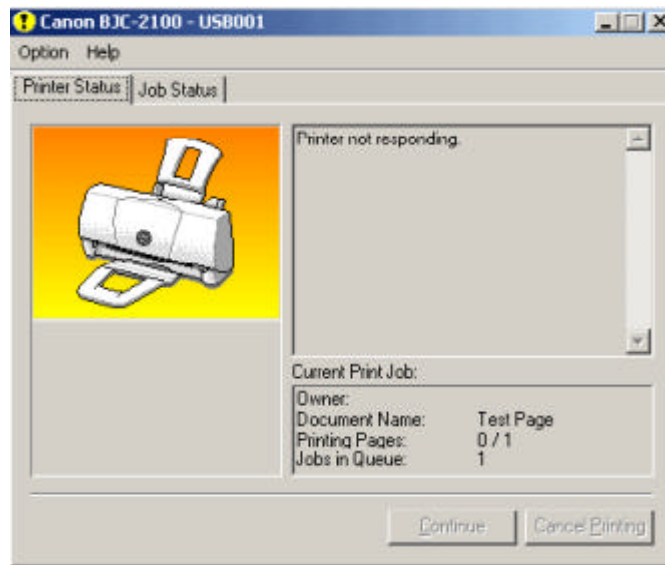
### Important considerations must be followed for the successful installation of additional Slave PC Adapters to an existing Wireless Printer Network installation:

- The installation of a new Slave PC Adapter can only be made with one Master Printer Adapter at a time.
- Successful searching and pairing cannot be accomplished if a Master Printer Adapter, other than the one being used during the installation procedures above, is unplugged from its printer's USB port and left powered-on.

## PRINTING CONSIDERATIONS

- In a Wireless Printer Network, idle Slave PC Adapters will blink periodically
- When installing additional Slave PC Adapters, the LED lights will turn green for a few seconds and then will turn off after a brief timeout period.
- Printing is performed through a polling process in which the Master Printer Adapter surveys all paired Slave PC Adapters for print requests. The polling sequence begins with the first paired Slave PC Adapter (supplied in the Wireless Printer Kit). The rest of the print requests will be processed in the order the Slave PC Adapter was paired with the Master Printer Adapter.
- Only one adapter can be actively printing at a time. After the current print queue is completed, the Slave PC Adapter's connection will be released after a timeout period. Then other active Slave PC Adapters will be polled in sequence to see if print requests are pending.
- If the Slave PC Adapter is not connected to the Master Printer Adapter, the printer status may appear to be either *Offline* or *Not Responding*, depending on your operating system and printer software. At this time, when a print job is submitted, it will be entered in the offline printer queue and processed when the printer comes online. However, depending on the operating system and the printer software, an error message may appear (see example below) and either 1) disappear when the printer comes online and process the job or 2) require the print job to be resubmitted.





## TROUBLESHOOTING

If you encounter any problems during the installation process, please refer to the following table for possible solutions.

Problem	Possible Solutions
1. The installation wizard cannot find the USB printer/connection during the USB driver installation.	<ul style="list-style-type: none"> <li>• Unplug the AC power adapter for the Master Printer Adapter from the power outlet, unplug and re-plug the Slave PC Adapter from/to the PC, and re-plug the AC power adapter into the power outlet to reset the link.</li> </ul>
2. The LED on the Slave PC Adapter does not turn on when both the Master Printer and Slave PC Adapters are plugged in.	<ul style="list-style-type: none"> <li>• When plugging in the Slave PC Adapter, the LED light will blink and turn off. It will then blink periodically, showing that it has been paired but is waiting to be reached in the polling sequence. If this periodic blinking does not occur, follow the directions in “Additional Slave PC Adapter Installation” for pairing.</li> </ul>
3. Both LED lights are on, but I am not able to print.	<ul style="list-style-type: none"> <li>• Make sure that the print job is being sent to the correct printer connected by the Wireless Printer Network and that the printer is powered on.</li> <li>• Unplug the AC power adapter for the Master Printer Adapter from the power outlet, unplug and re-plug the Slave PC Adapter from/to the PC, and re-plug the AC/DC power supply into the power outlet to reset the link.</li> <li>• Power the printer off, then on again to reset printer.</li> <li>• Confirm that the Master Printer and Slave PC Adapters being used are from the same -paired package.</li> </ul>
4. The LED light on the Master Printer Adapter does not turn on when it is plugged into the printer and the power supply connections are made.	<ul style="list-style-type: none"> <li>• Make sure the Master Printer Adapter is plugged in correctly.</li> <li>• Check the power supply connections to the Master Printer Adapter.</li> </ul>
5. A print job has been sent to the printer, but there is no response. The status in the Print Monitor window is blank.	<ul style="list-style-type: none"> <li>• Make sure that the print job is being sent to the correct printer connected by the Wireless Printer Network and that printer is powered on.</li> <li>• Check if the Slave PC Adapter’s LED light is on. In an environment with multiple Slave PC Adapters, a delay is possible while the polling sequence moves past idle or disconnected Slave PC Adapters. Wait for a few minutes to ensure the polling sequence has reached the Slave PC Adapter in question.</li> <li>• The print status will not appear to be online until the polling sequence has reached the Slave PC Adapter in question.</li> </ul>

Problem	Possible Solutions
6. The directions in this installation guide were followed, but the Slave PC Adapter did not pair with the Master Printer Adapter.	<ul style="list-style-type: none"><li data-bbox="692 383 1329 517">• Unplug the AC power adapter for the Master Printer Adapter from the power outlet, unplug and re-plug the Slave PC Adapter from/to the PC, and re-plug the AC power adapter into the power outlet. Repeat instructions from the beginning of the installation guide.</li></ul>



## Technical Support

If you have any questions or problems installing the Wireless Printer Adapter, please contact Technical Support.

Hours: 9 a.m. to 6 p.m. M-F

E-mail: [support@ambicom.com](mailto:support@ambicom.com)

Tel: (408) 562-0168

Fax: (408) 562-0178

## **Warranty**

### **1 Year Warranty**

As the original purchaser, you receive a 1-year warranty from AmbiCom:

This warranty gives you specific legal rights. You may also have other rights that vary from state to state.

**1 Year Limited Warranty:** AmbiCom, Inc. warrants its WP-SA products to be free from defects in materials and workmanship, under normal use and service, for 1 year from the date of purchase from its Authorized Reseller. During the warranty period, AmbiCom will, at its option, either repair or replace defective products with similar parts and products. Should the product be identified as defective, the end user is responsible for returning the product to the place of purchase and the cost of shipping and handling. Any replaced or repaired product has a ninety-day (90-day) warranty or the remainder of the initial warranty period, whichever is longer.

AmbiCom, Inc. shall not be responsible for any software, firmware, information or memory data of customer contained in, stored on, or integrated with any products returned to AmbiCom, Inc. pursuant to any warranty.

**Exclusion:** The warranty on your WP-SA products shall not apply to defect or damages resulting from:

- a. Improper or inadequate installation of the product operation outside the environmental specification for the products.
- b. Power spikes or other power related damage
- c. Compatibility problems with any other software of hardware products.
- d. Installation of any other software of hardware products.
- e. Incidental, contingent, or consequential charges

### **Warranty Limitations**

**WARRANTY LIMITATIONS:** THE WARRANTY SET FORTH ABOVE IS EXCLUSIVE AND NO OTHER WARRANTY, WHETHER WRITTEN OR ORAL IS EXPRESSED OR IMPLIED. AMBICOM, INC. SPECIFICALLY DISCLAIMS THE IMPLIED WARRANTIES OF MERCHANTABILITY AND FITNESS FOR A PARTICULAR PURPOSE. AMBICOM, INC. ALSO SPECIFICALLY DISCLAIMS ANY RESPONSIBILITY FOR ANY INCIDENTAL OR CONSEQUENTIAL DAMAGES THAT ITS PRODUCTS MAY CAUSE. A BUYER'S RECOURSE SHALL BE STRICTLY LIMITED TO THOSE CONTAINED IN THIS WARRANTY.

SOME STATES DO NOT ALLOW THESE LIMITATIONS ON THE LENGTH OF AN IMPLIED WARRANTY, SO THE ABOVE LIMITATIONS OR EXCLUSIONS MAY NOT APPLY TO YOU. HOWEVER, ANY IMPLIED WARRANTY OR MERCHANTABILITY OF FITNESS FOR A PARTICULAR PURPOSE IS FOR A PERIOD OF 1 YEAR ON THIS WRITTEN WARRANTY.

## FCC Information

This device complies with Part 15 of the FCC Rules. Operation is subject to the following two conditions: (1) this device may not cause harmful interference, and (2) this device must accept any interference received, including interference that may cause undesired operation.

NOTE: This equipment has been tested and found to comply with the limits for a Class B digital device, pursuant to Part 15 of the FCC Rules. These limits are designed to provide reasonable protection against harmful interference in a residential installation. This equipment generates, uses and can radiate radio frequency energy and, if not installed and used in accordance with the instructions, may cause harmful interference to radio communications. However, there is no guarantee that interference will not occur in a particular installation. If this equipment does cause harmful interference to radio or television reception, which can be determined by turning the equipment off and on, the user is encouraged to try to correct the interference by one or more of the following measures:

- Reorient or relocate the receiving antenna.
- Increase the separation between the equipment and receiver.
- Connect the equipment into an outlet on a circuit different from that to which the receiver is connected.
- Consult the dealer or an experienced radio/TV technician for help.

## Free Manuals Download Website

<http://myh66.com>

<http://usermanuals.us>

<http://www.somanuals.com>

<http://www.4manuals.cc>

<http://www.manual-lib.com>

<http://www.404manual.com>

<http://www.luxmanual.com>

<http://aubethermostatmanual.com>

Golf course search by state

<http://golfingnear.com>

Email search by domain

<http://emailbydomain.com>

Auto manuals search

<http://auto.somanuals.com>

TV manuals search

<http://tv.somanuals.com>