

AOC MONITOR

USER`S GUIDE

2236Swa

| | |
|--------------------------------|----|
| SAFETY INTRODUCTION..... | 2 |
| SETUP..... | 7 |
| ADJUSTING..... | 11 |
| DRIVER INSTALLATION GUIDE..... | 19 |
| PRODUCT INFORMATION..... | 26 |
| TROUBLESHOOT..... | 29 |

SAFETY INTRODUCTION

FCC Notice

FCC Class B Radio Frequency Interference Statement WARNING: (FOR FCC CERTIFIED MODELS)

NOTE: This equipment has been tested and found to comply with the limits for a Class B digital device, pursuant to Part 15 of the FCC Rules. These limits are designed to provide reasonable protection against harmful interference in a residential installation. This equipment generates, uses and can radiate radio frequency energy, and if not installed and used in accordance with the instructions, may cause harmful interference to radio communications. However, there is no guarantee that interference will not occur in a particular installation. If this equipment does cause harmful interference to radio or television reception, which can be determined by turning the equipment off and on, the user is encouraged to try to correct the interference by one or more of the following measures:

1. Reorient or relocate the receiving antenna.
2. Increase the separation between the equipment and receiver.
3. Connect the equipment into an outlet on a circuit different from that to which the receiver is connected.
4. Consult the dealer or an experienced radio/TV technician for help.

NOTICE :

1. The changes or modifications not expressly approved by the party responsible for compliance could void the user's authority to operate the equipment.
2. Shielded interface cables and AC power cord, if any, must be used in order to comply with the emission limits.
3. The manufacturer is not responsible for any radio or TV interference caused by unauthorized modification to this equipment. It is the responsibilities of the user to correct such interference.

WEEE Declaration

Disposal of Waste Equipment by Users in Private Household in the European Union.



This symbol on the product or on its packaging indicates that this product must not be disposed of with your other household waste. Instead, it is your responsibility to dispose of your waste equipment by handing it over to a designated collection point for the recycling of waste electrical and electronic equipment. The separate collection and recycling of your waste equipment at the time of disposal will help to conserve natural resources and ensure that it is recycled in a manner that protects human health and the environment. For more information about where you can drop off your waste equipment for recycling, please contact your local city office, your household waste disposal service or the shop where you purchased the product .

HG Declaration

 SAFETY: Lamp Disposal

LAMP(S) INSIDE THIS PRODUCT CONTAIN MERCURY AND MUST BE RECYCLED OR DISPOSED OF ACCORDING TO LOCAL, STATE OR FEDERAL LAWS. FOR MORE INFORMATION, CONTACT THE ELECTRONIC INDUSTRIES ALLIANCE AT WWW.EIAE.ORG.

Precautions



WARNING: Use of controls, adjustments, or procedures other than those specified in this documentation may result in exposure to shock, electrical hazards, and/or mechanical hazards.

Read and follow these precautions when connecting and using your computer monitor:

PRECAUTIONS

- Do not use the monitor near water, e.g. near a bathtub, washbowl, kitchen sink, laundry tub, swimming pool or in a wet basement.
- Do not place the monitor on an unstable cart, stand, or table. If the monitor falls, it can injure a person and cause serious damage to the appliance. Use only a cart or stand recommended by the manufacturer or sold with the monitor. If you mount the monitor on a wall or shelf, use a mounting kit approved by the manufacturer and follow the kit instructions.
- Slots and openings in the back and bottom of the cabinet are provided for ventilation. To ensure reliable operation of the monitor and to protect it from overheating, be sure these openings are not blocked or covered. Do not place the monitor on a bed, sofa, rug, or similar surface. Do not place the monitor near or over a radiator or heat register. Do not place the monitor in a bookcase or cabinet unless proper ventilation is provided.
- The monitor should be operated only from the type of power source indicated on the label. If you are not sure of the type of power supplied to your home, consult your dealer or local power company.
- The monitor is equipped with a three-pronged grounded plug, a plug with a third (grounding) pin. This plug will fit only into a grounded power outlet as a safety feature. If your outlet does not accommodate the three-wire plug, have an electrician install the correct outlet, or use an adapter to ground the appliance safely. Do not defeat the safety purpose of the grounded plug.
- Unplug the unit during a lightning storm or when it will not be used for long periods of time. This will protect the monitor from damage due to power surges.
- Do not overload power strips and extension cords. Overloading can result in fire or electric shock.
- Never push any object into the slot on the monitor cabinet. It could short circuit parts causing a fire or electric shock. Never spill liquids on the monitor.
- Do not attempt to service the monitor yourself; opening or removing covers can expose you to dangerous voltages and other hazards. Please refer all servicing to qualified service personnel.
- To ensure satisfactory operation, use the monitor only with UL listed computers which have appropriate configured receptacles marked between 100 - 240V AC, Min. 5A.
- The wall socket shall be installed near the equipment and shall be easily accessible.
- For use only with the attached power adapter (Output 12Vdc) which have **UL,CSA** listed license(Only for monitors with power adapter).
- Please make sure to clean the cabinet regularly with the provided cloth , you can use soft-cleanser to clean the stain , instead of severe spray cleanser which will cauterize the monitor cabinet.
- Dont leak liquid into monitor which will result in the damage of chassis or component. Please unplug before cleaning ,and do not scratch the screen with hard things.

National Conventions

The following subsections describe notational conventions used in this document.

Notes, Cautions, and Warnings

Throughout this guide, blocks of text may be accompanied by an icon and printed in bold type or in italic type. These blocks are notes, cautions, and warnings, and they are used as follows:



NOTE: A NOTE indicates important information that helps you make better use of your computer system.



CAUTION: A CAUTION indicates either potential damage to hardware or loss of data and tells you how to avoid the problem.



WARNING: A WARNING indicates the potential for bodily harm and tells you how to avoid the problem. Some warnings may appear in alternate formats and may be unaccompanied by an icon. In such cases, the specific presentation of the warning is mandated by regulatory authority.

POWER



The monitor should be operated only from the type of power source indicated on the label. If you are not sure of the type of power supplied to your home, consult your dealer or local power company.



The monitor is equipped with a three-pronged grounded plug, a plug with a third (grounding) pin. This plug will fit only into a grounded power outlet as a safety feature. If your outlet does not accommodate the three-wire plug, have an electrician install the correct outlet, or use an adapter to ground the appliance safely. Do not defeat the safety purpose of the grounded plug.



Unplug the unit during a lightning storm or when it will not be used for long periods of time. This will protect the monitor from damage due to power surges.



Do not overload power strips and extension cords. Overloading can result in fire or electric shock.



To ensure satisfactory operation, use the monitor only with UL listed computers which have appropriate configured receptacles marked between 100 - 240V AC, Min. 5A



The wall socket shall be installed near the equipment and shall be easily accessible.



For use only with the attached power adapter (Output 12Vdc) which have **UL,CSA** listed license (Only for monitors with power adapter).

INSTALLATION



Do not place the monitor on an unstable cart, stand, tripod, bracket, or table. If the monitor falls, it can injure a person and cause serious damage to this product. Use only a cart, stand, tripod, bracket, or table recommended by the manufacturer or sold with this product. Follow the manufacturer's instructions when installing the product and use mounting accessories recommended by the manufacturer. A product and cart combination should be moved with care.



Never push any object into the slot on the monitor cabinet. It could damage circuit parts causing a fire or electric shock. Never spill liquids on the monitor.



Do not place the front of the product on the floor.



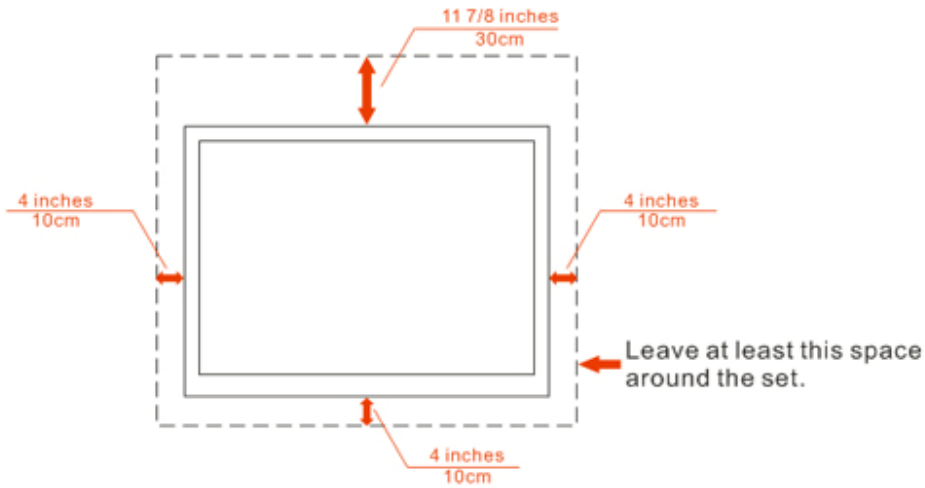
If you mount the monitor on a wall or shelf, use a mounting kit approved by the manufacturer and follow the kit instructions.



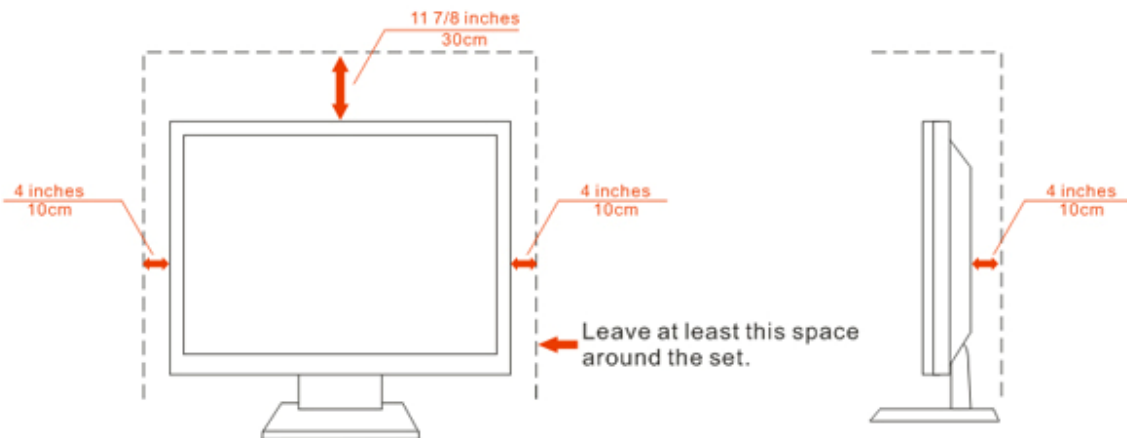
Leave some space around the monitor as shown below. Otherwise, air-circulation may be inadequate hence overheating may cause a fire or damage to the monitor.

See below the recommended ventilation areas around the monitor when the monitor is installed on the wall or on the stand:

Installed on the wall



Installed with stand



CLEANING



Clean the cabinet regularly with the cloth provided. You can use soft-detergent to wipe out the stain, instead of strong-detergent which will cauterize the product cabinet.



When cleaning, make sure no detergent is leaked into the product. The cleaning cloth should not be too rough as it will scratch the screen surface.



Please disconnect the power cord before cleaning the product.



OTHER



If the product is emitting a strange smell, sound or smoke, disconnect the power plug IMMEDIATELY and contact a Service Center.



Make sure that the ventilating openings are not blocked by a table or curtain.



Do not engage the LCD monitor in severe vibration or high impact conditions during operation.



Do not knock or drop the monitor during operation or transportation.

SETUP

CONTENTS IN BOX



Monitor



QSG



CD Manual



Screw



Monitor Base



Stand



Power Cable



DVI Cable



Analog Cable



Audio Cable



HDMI Cable



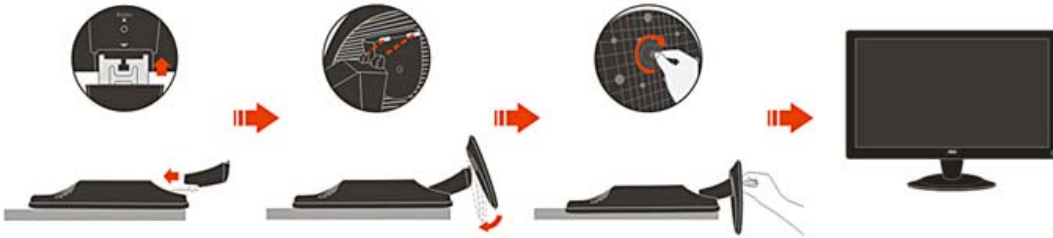
USB Cable

* Not all signal cables (Analog, DVI, USB, Audio, and HDMI cables) will be provided for all countries and regions. Please check with the local dealer or AOC branch office for confirmation.

SETUP STAND & BASE

Please setup or remove the base following the steps as below.

Setup:

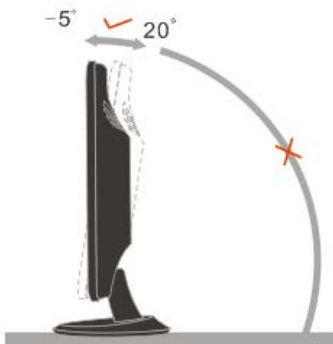


Remove:



ADJUSTING VIEWING ANGLE

- For optimal viewing it is recommended to look at the full face of the monitor, then adjust the monitor's angle to your own preference.
- Hold the stand so you will not topple the monitor when you change the monitor's angle.
- You are able to adjust the monitor's angle from -5° to 20°

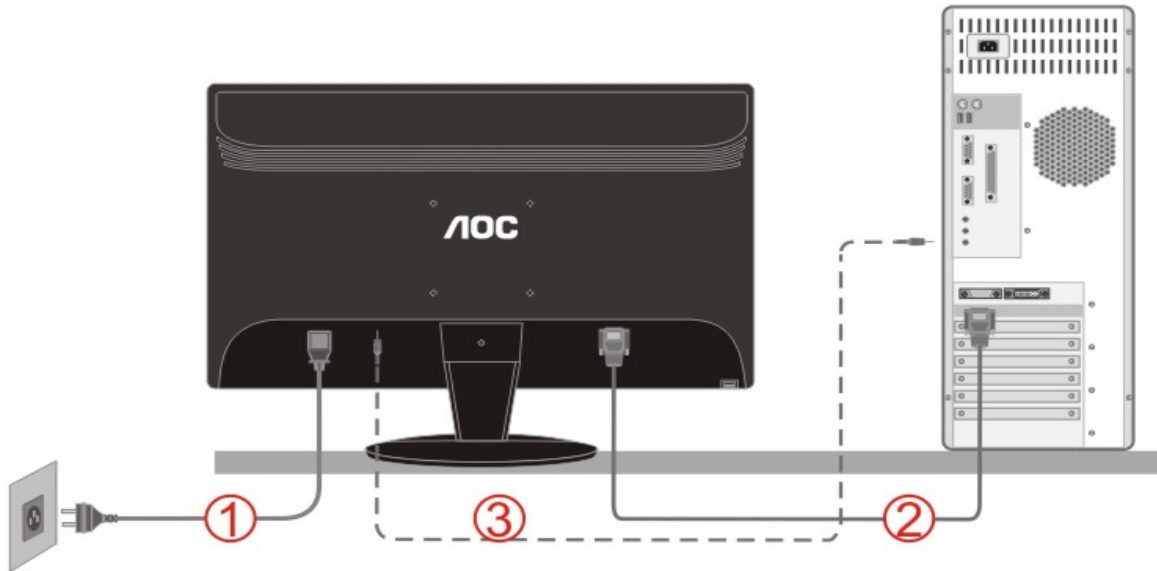


NOTE:

Do not touch the LCD screen when you change the angle. It may cause damage or break the LCD screen.

CONNECTING MONITOR

Cable Connections On Back of Monitor and Computer



1. Power
2. Analog (DB-15 VGA cable)
3. Audio

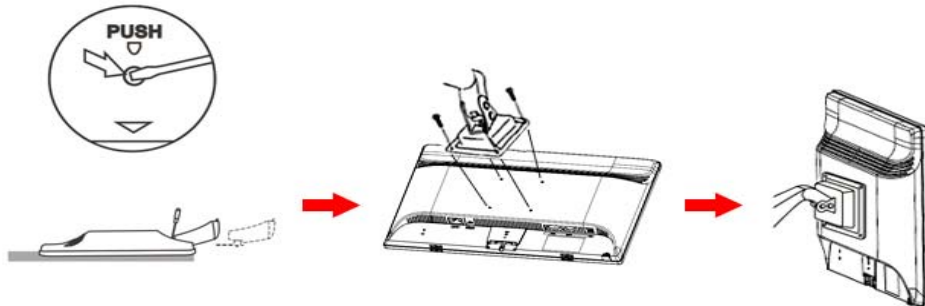
To protect equipment, always turn off the PC and LCD monitor before connecting.

1. Connect the power cable to the AC port on the back of the monitor.
2. Connect one end of the 15-pin D-Sub cable to the back of the monitor and connect the other end to the computer's D-Sub port.
3. Connect the audio cable to audio in port on the back of the monitor
4. Turn on your monitor and computer.

If your monitor displays an image, installation is complete. If it does not display an image, please refer [Troubleshooting](#).

Wall Mounting

Preparing to Install An Optional Wall Mounting Arm.



This monitor can be attached to a wall mounting arm you purchase separately. Disconnect power before this procedure. Follow these steps:

1. Remove the base.
2. Follow the manufacturer's instructions to assemble the wall mounting arm.
3. Place the wall mounting arm onto the back of the monitor. Line up the holes of the arm with the holes in the back of the monitor.
4. Insert the 4 screws into the holes and tighten.
5. Reconnect the cables. Refer to the user's manual that came with the optional wall mounting arm for instructions on attaching it to the wall.

Noted : VESA mounting screw holes are not available for all models, please check with the dealer or official department of AOC.

Distance between the wall-mount holes : 100 x 100 mm

Screw specification for wall-mount : M4 x 10

The recommended resolution for this monitor is 1920 by 1080. To setup the monitor to this resolution, follow the steps below.

For Windows Vista:

- 1 Click **START**.
- 2 Click **CONTROL PANEL**.



- 3 Click **Appearance and Personalization**.



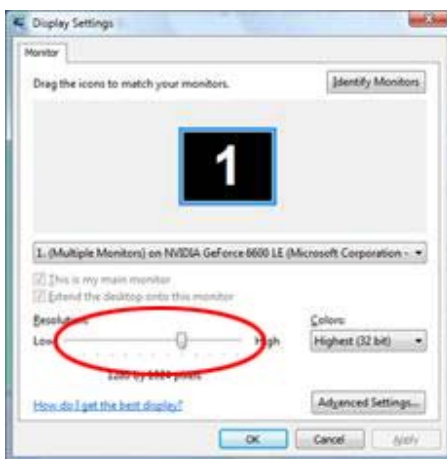
- 4 Click **Personalization**



5 Click **Display Settings**.



6 Set the resolution **SLIDE-BAR** to 1920 by 1080.



For Windows XP:

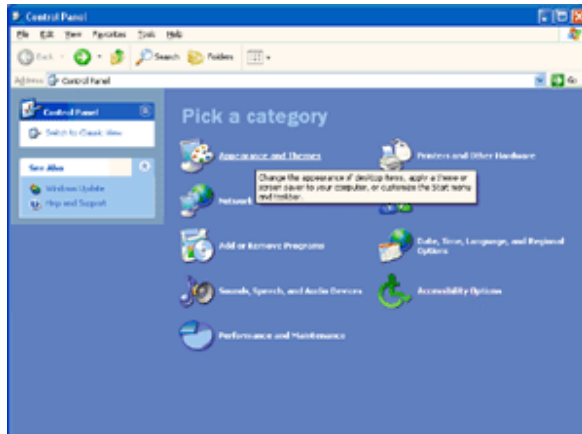
1 Click **START**.

2 Click **SETTINGS**.

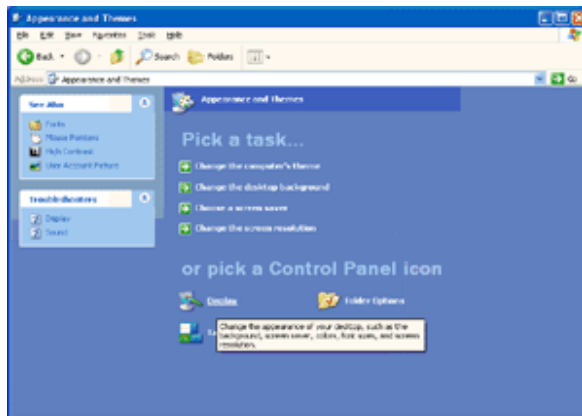
3 Click **CONTROL PANEL**.



4 Click **Appearance and Themes**.

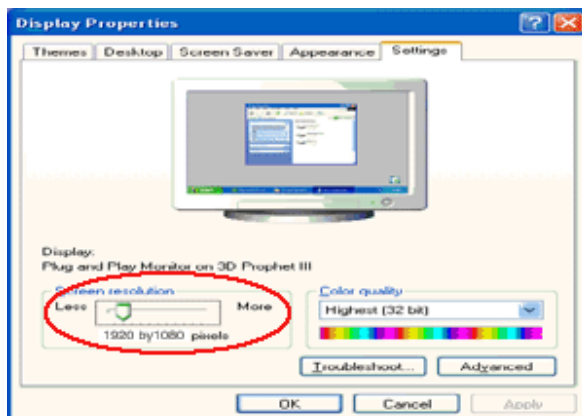


5 Double click **DISPLAY**.



6 Click **SETTINGS**.

7 Set the resolution **SLIDE-BAR** to 1920 by 1080.



For Windows ME/2000:

1 Click **START**.

2 Click **SETTINGS**.

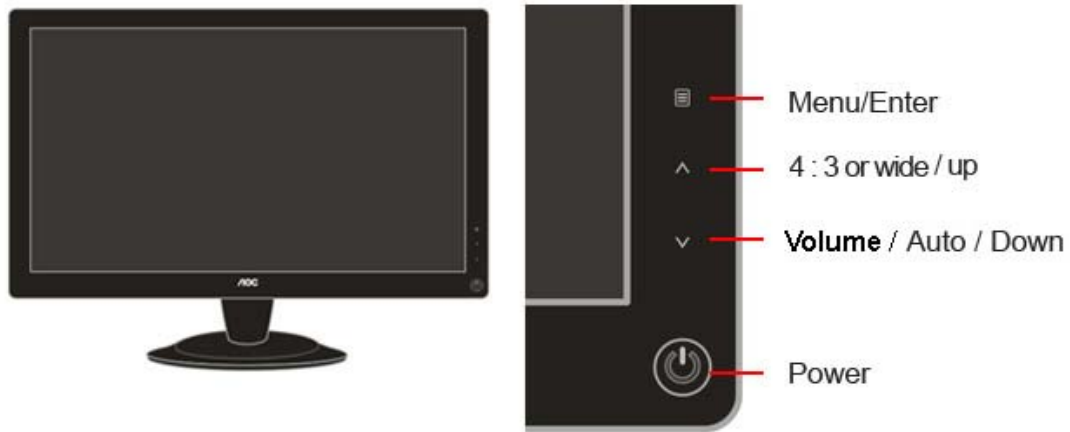
3 Click **CONTROL PANEL**.

4 Double click **DISPLAY**.

5 Click **SETTINGS**.

6 Set the resolution **SLIDE-BAR** to 1920 by 1080.

HOTKEYS



Power

Press to turn on or turn off the monitor.

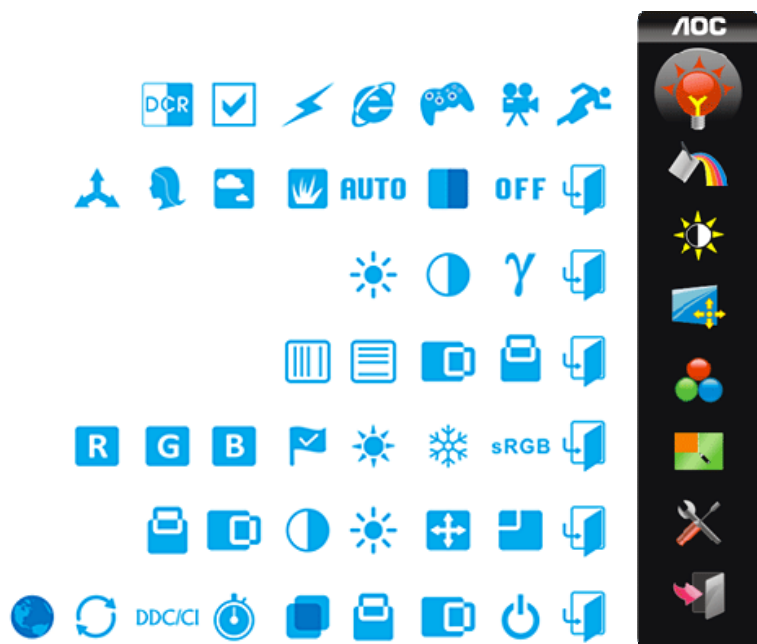
4:3 or wide / Up

Press \blacktriangle key to change the screen aspect ratio between standard 4 : 3 format or Wide format. When the input resolution is wide format, the aspect ratio hotkey is disabled. When the main menu or sub-menu is active, the \blacktriangle key functions as to select up or increase value.

Auto / Down

Auto configure hot key: When the OSD is closed, press Auto button to do auto configure.

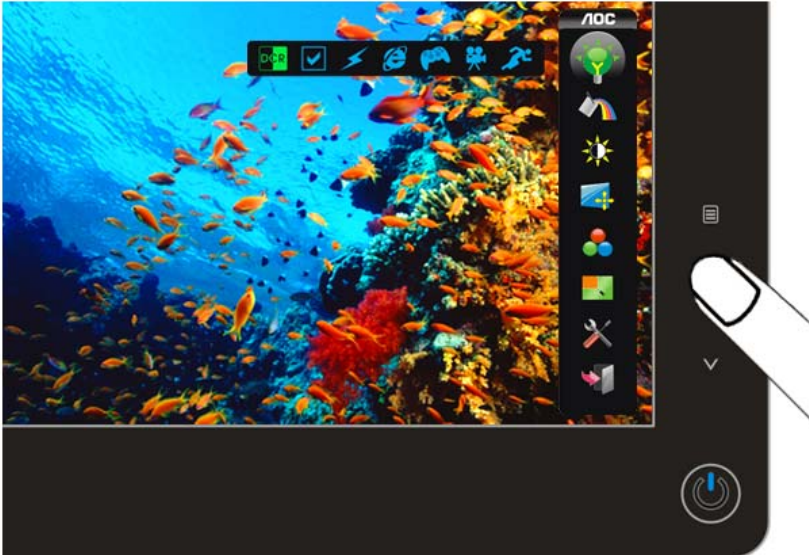
OSD SETTING



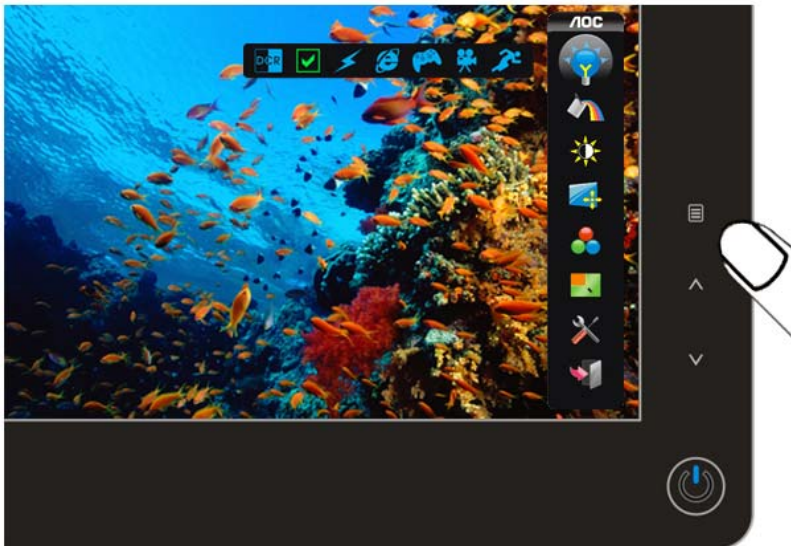


Eco mode ---DCR, Standard, Text, Internet, Game, Movie, Sports

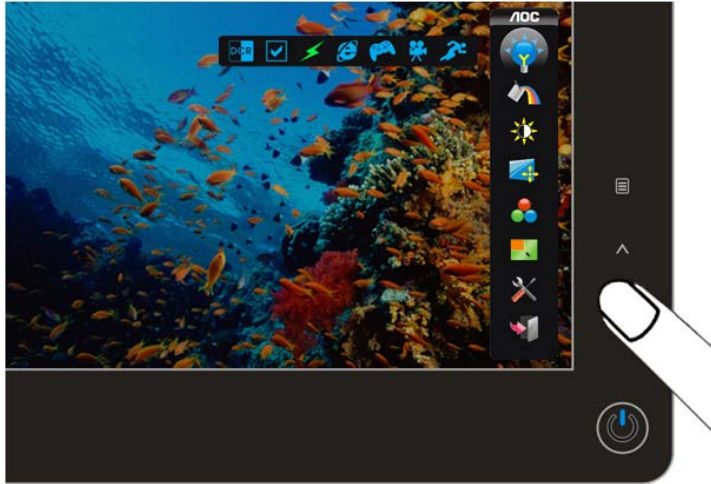
DCR



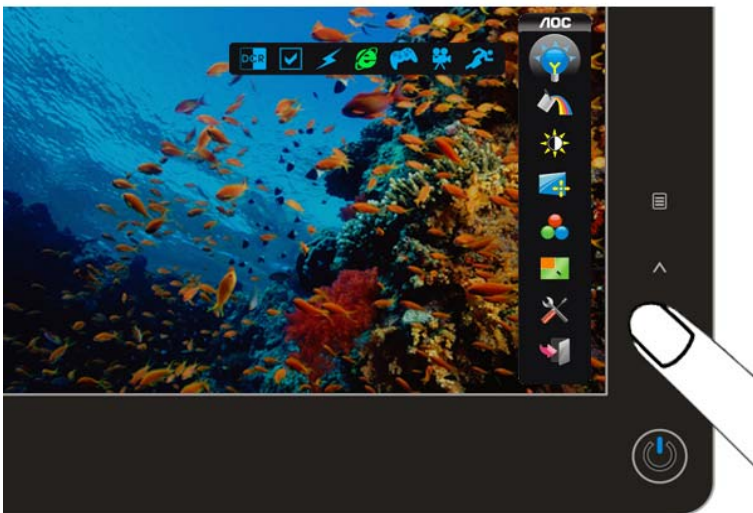
Standard



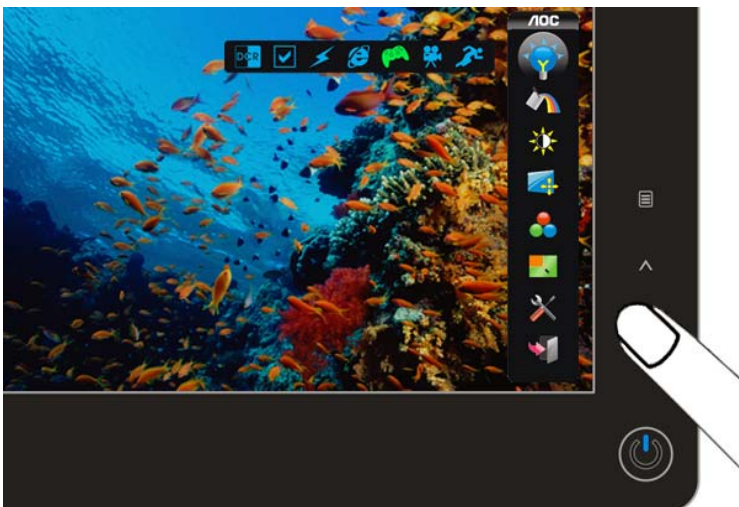
TEXT



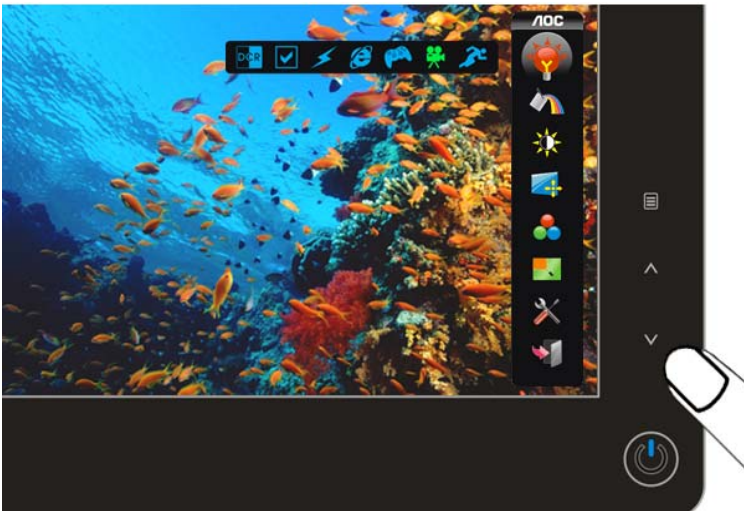
INTERNET



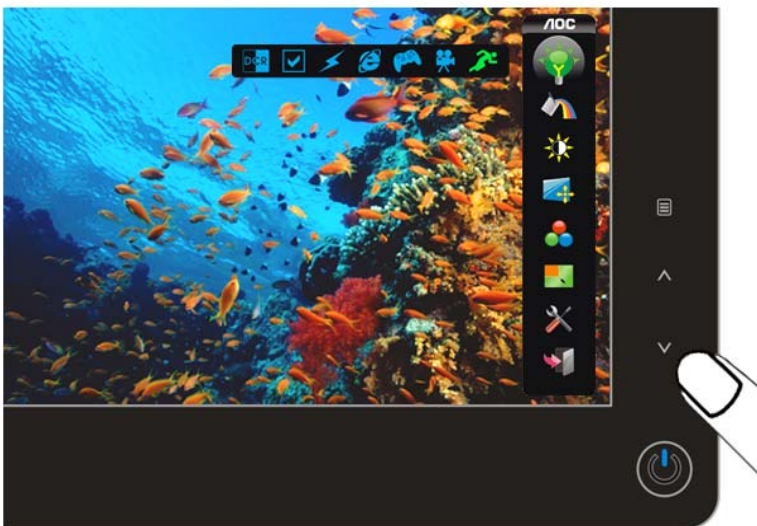
Game



Movie



Sports



Notes : When Eco mode is not set as "Standard", Contrast and Brightness can not be adjusted; When DCR is set as "On", Contrast, Brightness, Eco mode and Gamma can not be adjusted.

LED INDICATOR

| Status | LED Color | |
|-----------------|-----------|---|
| Full Power Mode | Blue |  |
| Active-off Mode | Orange |  |

DRIVER INSTALLATION GUIDE

Windows 2000

Start Windows® 2000

2. Click on the 'Start' button, point to 'Settings', and then click on 'Control Panel'.
 3. Double click on the 'Display' Icon.
 4. Select the 'Settings' tab then click on 'Advanced...'
 5. Select 'Monitor'
 - If the 'Properties' button is inactive, it means your monitor is properly configured. Please stop installation.
 - If the 'Properties' button is active. Click on 'Properties' button. Please follow the steps given below.
 6. Click on 'Driver' and then click on 'Update Driver...' then click on the 'Next' button.
 7. Select 'Display a list of the known drivers for this device so that I can choose a specific driver', then click on 'Next' and then click on 'Have disk...'
 8. Click on the 'Browse...' button then select the appropriate drive F: (CD-ROM Drive).
 9. Click on the 'Open' button, then click on the 'OK' button.
 10. Select your monitor model and click on the 'Next' button.
 11. Click on the 'Finish' button then the 'Close' button.
- If you can see the 'Digital Signature Not Found' window, click on the 'Yes' button.

Windows ME

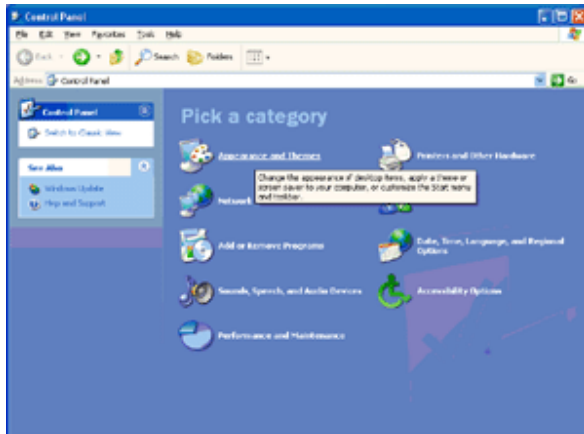
1. Start Windows® Me
2. Click on the 'Start' button, point to 'Settings', and then click on 'Control Panel'.
3. Double click on the 'Display' Icon.
4. Select the 'Settings' tab then click on 'Advanced...'
5. Select the 'Monitor' button, then click on 'Change...' button.
6. Select 'Specify the location of the driver(Advanced)' and click on the 'Next' button.
7. Select 'Display a list of all the drivers in a specific location, so you can choose the driver you want', then click on 'Next' and then click on 'Have Disk...'
8. Click on the 'Browse...' button, select the appropriate drive F: (CD-ROM Drive) then click on the 'OK' button.
9. Click on the 'OK' button, select your monitor model and click on the 'Next' button.
10. Click on 'Finish' button then the 'Close' button.

Windows XP

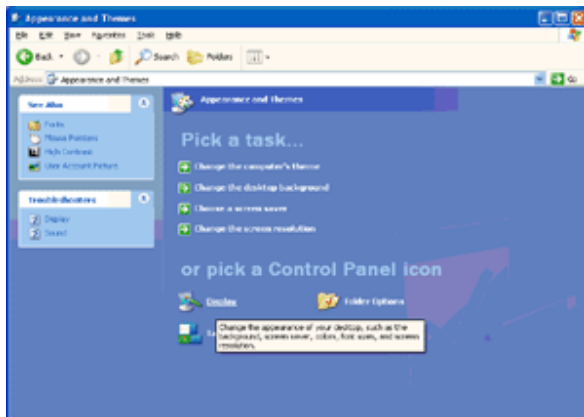
1. Start Windows® XP
2. Click on the 'Start' button and then click on 'Control Panel'.



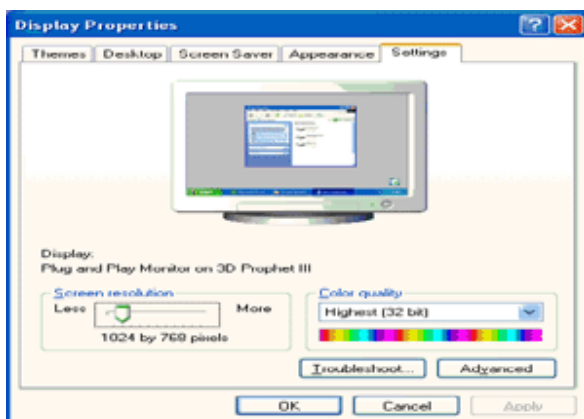
3. Select and click on the category 'Appearance and Themes'



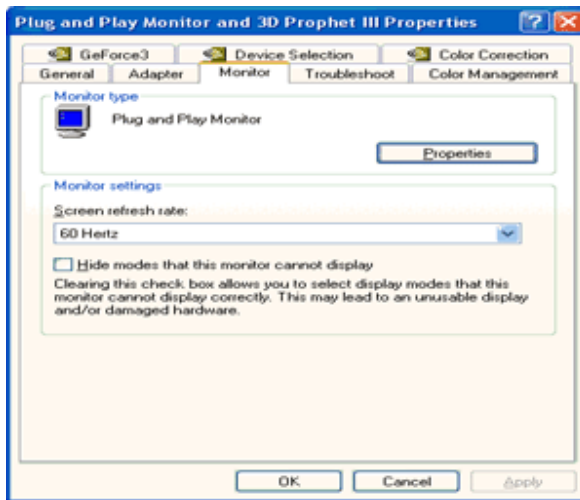
4. Click on the 'Display' Item.



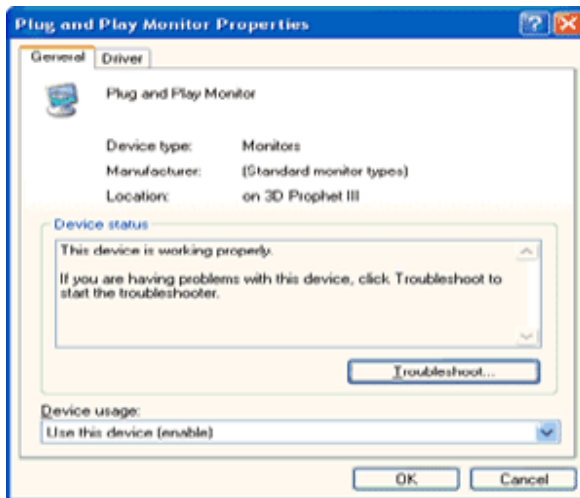
5. Select the 'Settings' tab then click on the 'Advanced' button.



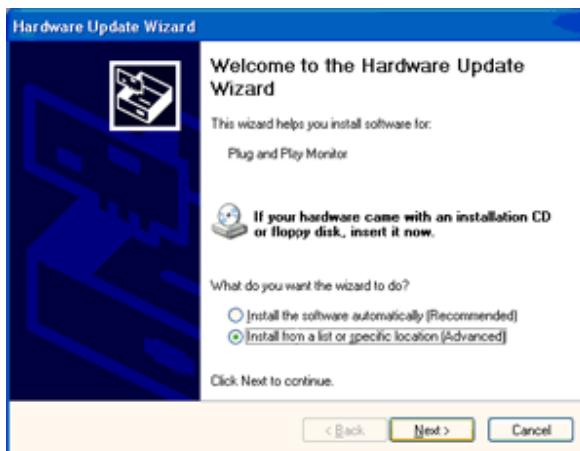
6. Select 'Monitor' tab
- If the 'Properties' button is inactive, it means your monitor is properly configured. Please stop installation.
- If the 'Properties' button is active, click on 'Properties' button.
Please follow the steps below.



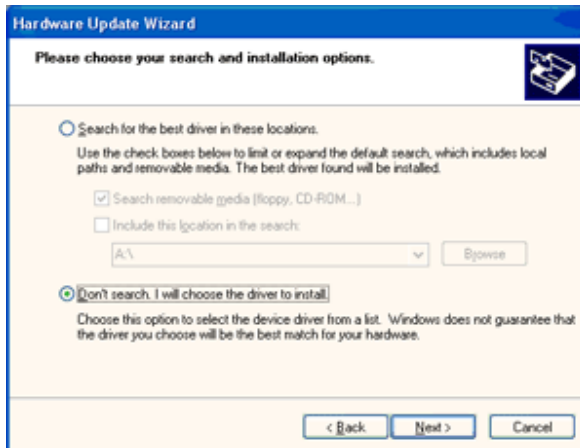
7. Click on the 'Driver' tab and then click on 'Update Driver...' button.



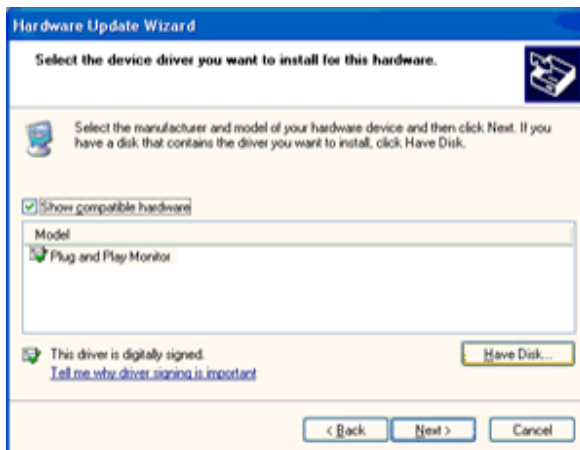
8. Select the 'Install from a list or specific location [advanced]' radio button and then click on the 'Next' button.



9. Select the 'Don't Search. I will choose the driver to install' radio button. Then click on the 'Next' button.



10. Click on the 'Have disk...' button, then click on the 'Browse...' button and then select the appropriate drive F: (CD-ROM Drive).



11. Click on the 'Open' button, then click the 'OK' button.

12. Select your monitor model and click on the 'Next' button.

- If you can see the 'has not passed Windows® Logo testing to verify its compatibility with Windows® XP' message, please click on the 'Continue Anyway' button.

13. Click on the 'Finish' button then the 'Close' button.

14. Click on the 'OK' button and then the 'OK' button again to close the Display_Properties dialog box.

Windows Vista

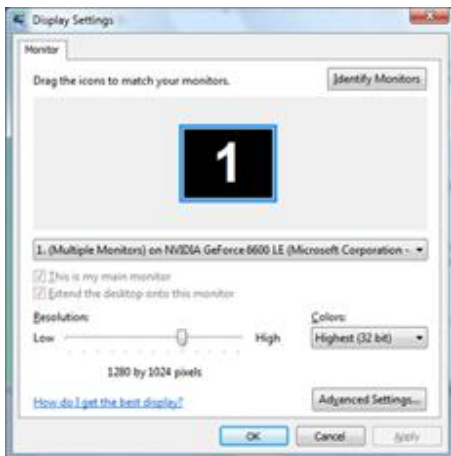
1. Click "Start " and "Control Panel". Then, double-click on "Appearance and Personalization".



2. Click "Personalization" and then "Display Settings".



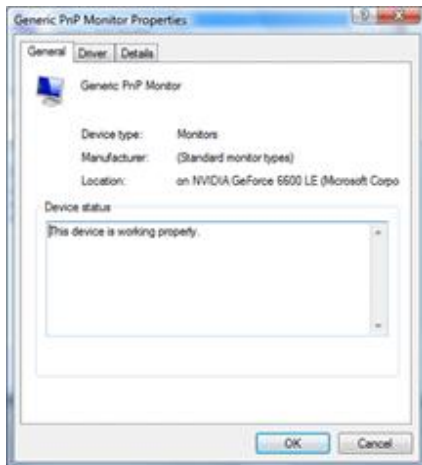
3. Click "Advanced Settings...".



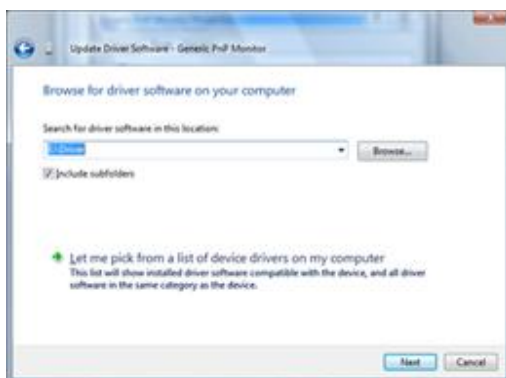
4. Click "Properties" in the "Monitor" tab. If the "Properties" button is deactivated, it means the configuration for your monitor is completed. The monitor can be used as is. If the message "Windows needs..." is displayed, as shown in the figure below, click "Continue".



5. Click "Update Driver..." in the "Driver" tab.



6. Check the "Browse my computer for driver software" checkbox and click "Let me pick from a list of device drivers on my computer".



7. Click on the 'Have disk...' button, then click on the 'Browse...' button and then select the appropriate drive F:\Driver (CD-ROM Drive).

8. Select your monitor model and click on the 'Next' button.

9. Click "Close" → "Close" → "OK" → "OK" on the following screens displayed in sequence.

i-MENU



Welcome to "i-Menu" software by AOC. i-Menu makes it easy to adjust your monitor display setting by using on screen menus instead of the OSD button on the monitor. Please click [here](#) to setup the software. To complete installation, please follow the installation guide .



PRODUCT INFORMATION

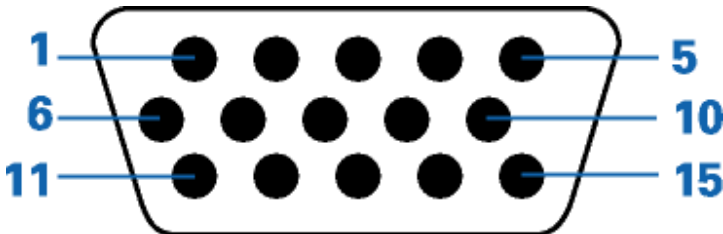
Specifications

| | | | | |
|--------------------------|-------------------------------|--|--|--|
| LCD Panel | model name | 2236Swa | | |
| | Driving system | TFT Color LCD | | |
| | Viewable Image Size | 547mm diagonal | | |
| | Pixel pitch | 0.248mm(H) x 0.248mm(V) | | |
| | Video | R, G, B Analog Interface & Digital Interface | | |
| | Separate Sync. | H/V TTL | | |
| | Display Color | 16.7M Colors | | |
| | Dot Clock | 148.5 MHz | | |
| Resolution | Horizontal scan range | 30 kHz - 80 kHz | | |
| | Horizontal scan Size(Maximum) | 476.64mm | | |
| | Vertical scan range | 55 Hz - 75 Hz | | |
| | Vertical scan Size(Maximum) | 268.11mm | | |
| | Optimal preset resolution | 1920 x 1080 (60 Hz) | | |
| | Highest preset resolution | 1920 x 1080 (60 Hz) | | |
| | Plug & Play | VESA DDC2B/CI | | |
| | Input Connector | D-Sub 15pin | | |
| | Input Video Signal | Analog: 0.7Vp-p(standard), 75 OHM | | |
| | Power Source | 100-240VAC, 50/60Hz | | |
| | Power Consumption | Typical < 42 W Standby < 1 W | | |
| | USB Downstream port (A type) | To USB device, loading < 100mA | | |
| | off timer | 0~24hours | Select timing to turn off the monitor. | |
| | Speakers | 2W x 2 | | |
| Physical Characteristics | Connector Type | 15-pin Mini D-Sub | | |
| | Signal Cable Type | Detachable | | |
| | Dimensions & Weight: | Height (with base) | 396.6 mm | |
| | | Width | 531.3mm | |
| | | Depth | 206mm | |
| | | Weight (monitor only) | 4.35 kg | |
| Weight (with packaging) | 5.8 kg | | | |
| Environmental | Temperature: | Operating | 0° to 40° | |
| | | Non-Operating | -20°to 60° | |
| | | | | |

Preset Display Modes

| STAND | RESOLUTION | HORIZONTAL FREQUENCY(kHZ) | VERTICAL FREQUENCY(Hz) |
|----------|-----------------|------------------------------|---------------------------|
| VGA | 640×480 @60Hz | 31.469 | 59.940 |
| VGA | 640×480 @67Hz | 35.000 | 66.667 |
| VGA | 640×480 @72Hz | 37.861 | 72.809 |
| VGA | 640×480 @75Hz | 37.500 | 75.000 |
| Dos-mode | 720×400 @70Hz | 31.469 | 70.087 |
| SVGA | 800×600 @56Hz | 35.156 | 56.250 |
| SVGA | 800×600 @60Hz | 37.879 | 60.317 |
| SVGA | 800×600 @72Hz | 48.077 | 72.188 |
| SVGA | 800×600 @75Hz | 46.875 | 75.000 |
| SVGA | 832×624 @75Hz | 49.725 | 74.550 |
| XGA | 1024×768 @60Hz | 48.363 | 60.004 |
| XGA | 1024×768 @70Hz | 56.476 | 70.069 |
| XGA | 1024×768 @75Hz | 60.023 | 75.029 |
| XGA | 1024×768 @75Hz | 60.241 | 74.927 |
| *** | 1280×960 @60Hz | 60.000 | 60.000 |
| SXGA | 1280×1024 @60Hz | 63.981 | 60.02 |
| SXGA | 1280×1024 @75Hz | 79.976 | 75.025 |
| WXGA+ | 1440×900 @60Hz | 55.935 | 59.887 |
| WSXGA | 1680×1050 @60Hz | 65.290 | 59.954 |
| HD | 1920×1080@60Hz | 67.500 | 60.000 |

Pin Assignments



| Pin Number | 15-Pin Side of the Signal Cable |
|------------|---------------------------------|
| 1 | Video-Red |
| 2 | Video-Green |
| 3 | Video-Blue |
| 4 | N.C. |
| 5 | Detect Cable |
| 6 | GND-R |
| 7 | GND-G |
| 8 | GND-B |
| 9 | +5V |
| 10 | Ground |
| 11 | N.C. |
| 12 | DDC-Serial data |
| 13 | H-sync |
| 14 | V-sync |
| 15 | DDC-Serial clock |

PLUG & PLAY

Plug & Play DDC2B Feature

This monitor is equipped with VESA DDC2B capabilities according to the VESA DDC STANDARD.

It allows the monitor to inform the host system of its identity and, depending on the level of DDC used, communicate additional information about its display capabilities.

The DDC2B is a bi-directional data channel based on the I²C protocol. The host can request EDID information over the DDC2B channel.

TROUBLESHOOT

| Problem & Question | Possible Solutions |
|---|--|
| Power LED Is Not ON | <ul style="list-style-type: none"> • Make sure the power button is ON and the Power Cord is properly connected to a grounded power outlet and to the monitor. |
| No images on the screen | <ul style="list-style-type: none"> • Is the power cord connected properly? Check the power cord connection and power supply. • Is the cable connected correctly? (Connected using the D-sub cable) Check the DB-15 cable connection. (Connected using the DVI cable) Check the DVI cable connection. * DVI input is not available on every model. • If the power is on, reboot the computer to see the initial screen (the login screen), which can be seen. If the initial screen (the login screen) appears, boot the computer in the applicable mode (the safe mode for Windows ME/XP/2000) and then change the frequency of the video card. (Refer to the Setting the Optimal Resolution) If the initial screen (the login screen) does not appear, contact the Service Center or your dealer. • Can you see "Input Not Supported" on the screen? You can see this message when the signal from the video card exceeds the maximum resolution and frequency that the monitor can handle properly. Adjust the maximum resolution and frequency that the monitor can handle properly. • Make sure the AOC Monitor Drivers are installed (AOC Monitor Drivers are available at : here) |
| Picture Is Fuzzy & Has Ghosting Shadowing Problem | <ul style="list-style-type: none"> • Adjust the Contrast and Brightness Controls. • Press to auto adjust. • Make sure you are not using an extension cable or switch box. We recommend plugging the monitor directly to the video card output connector on the back . |
| Picture Bounces, Flickers Or Wave Pattern Appears In The Picture | <ul style="list-style-type: none"> • Move electrical devices that may cause electrical interference as far away from the monitor as possible. • Use the maximum refresh rate your monitor is capable of at the resolution your are using. |
| Monitor Is Stuck In Active Off-Mode" | <ul style="list-style-type: none"> • The Computer Power Switch should be in the ON position. • The Computer Video Card should be snugly fitted in its slot. • Make sure the monitor's video cable is properly connected to the computer. • Inspect the monitor's video cable and make sure no pin is bent. • Make sure your computer is operational by hitting the CAPS LOCK key on the |

| | |
|---|---|
| | <p>keyboard while observing the CAPS LOCK LED. The LED should either turn ON or OFF after hitting the CAPS LOCK key.</p> |
| <p>Missing one of the primary colors (RED, GREEN, or BLUE)</p> | <ul style="list-style-type: none"> • Inspect the monitor's video cable and make sure that no pin is damaged. • Make sure the monitor's video cable is properly connected to the computer. |
| <p>Screen image is not centered or sized properly</p> | <ul style="list-style-type: none"> • Adjust H-Position and V-Position or press hot-key (AUTO). |
| <p>Picture has color defects (white does not look white)</p> | <ul style="list-style-type: none"> • Adjust RGB color or select desired color temperature. |
| <p>Horizontal or vertical disturbances on the screen</p> | <ul style="list-style-type: none"> • Use Windows 95/98/2000/ME/XP shut-down mode Adjust CLOCK and FOCUS. • Press to auto-adjust |

Free Manuals Download Website

<http://myh66.com>

<http://usermanuals.us>

<http://www.somanuals.com>

<http://www.4manuals.cc>

<http://www.manual-lib.com>

<http://www.404manual.com>

<http://www.luxmanual.com>

<http://aubethermostatmanual.com>

Golf course search by state

<http://golfingnear.com>

Email search by domain

<http://emailbydomain.com>

Auto manuals search

<http://auto.somanuals.com>

TV manuals search

<http://tv.somanuals.com>