

AOC

LCD Monitor User Manual

E2251F_{WU}



www.aoc.com

©2011 AOC. All Rights Reserved.

Safety.....	2
National Conventions.....	2
Installation.....	3
Cleaning.....	4
Other.....	5
Setup	6
Contents in Box	6
Setup Stand	7
Adjusting Viewing Angle.....	9
Connecting the Monitor.....	10
Installation of USB Graphic software on your computer.....	11
For Microsoft® Windows® 7	11
For Microsoft® Windows Vista®	13
For Microsoft® Windows® XP	15
Setting the USB Monitor	16
To Control the Display.....	17
For Microsoft® Windows® 7	17
For Microsoft® Windows® XP and Microsoft® Windows Vista®	17
Disconnecting the LCD Monitor	17
Cleaning the LCD Monitor.....	17
Supported Media Player	18
PC Requirements	19
Troubleshooting	22
Specification.....	23
General Specification.....	23
Regulation.....	24
FCC Notice	24
WEEE Declaration	25
EPA Energy Star	25
Service.....	26
Warranty Statement for Europe.....	26
Warranty Statement for North & South America (excluding Brazil)	28

Safety

National Conventions

The following subsections describe notational conventions used in this document.

Notes, Cautions, and Warnings

Throughout this guide, blocks of text may be accompanied by an icon and printed in bold type or in italic type. These blocks are notes, cautions, and warnings, and they are used as follows:



NOTE: A NOTE indicates important information that helps you make better use of your computer system.





CAUTION: A CAUTION indicates either potential damage to hardware or loss of data and tells you how to avoid the problem.





WARNING: A WARNING indicates the potential for bodily harm and tells you how to avoid the problem. Some warnings may appear in alternate formats and may be unaccompanied by an icon. In such cases, the specific presentation of the warning is mandated by regulatory authority.

Installation

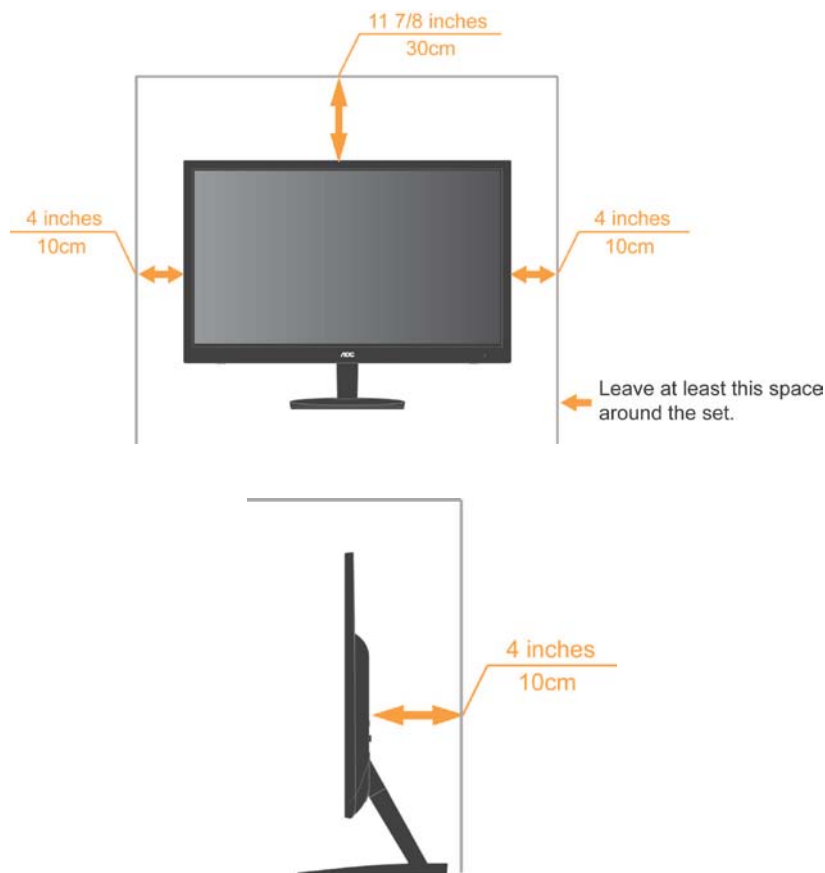
 Do not place the monitor on an unstable cart, stand, tripod, bracket, or table. If the monitor falls, it can injure a person and cause serious damage to this product. Use only a cart, stand, tripod, bracket, or table recommended by the manufacturer or sold with this product. Follow the manufacturer's instructions when installing the product and use mounting accessories recommended by the manufacturer. A product and cart combination should be moved with care.

 Never push any object into the slot on the monitor cabinet. It could damage circuit parts causing a fire or electric shock. Never spill liquids on the monitor.


 Do not place the front of the product on the floor.


 Leave some space around the monitor as shown below. Otherwise, air-circulation may be inadequate hence overheating may cause a fire or damage to the monitor.

See below the recommended ventilation areas around the monitor when the monitor is installed on the wall or on the stand:



Cleaning

 Clean the cabinet regularly with cloth. You can use soft-detergent to wipe out the stain, instead of strong-detergent which will cauterize the product cabinet.

 When cleaning, make sure no detergent is leaked into the product. The cleaning cloth should not be too rough as it will scratch the screen surface.



Other



If the product is emitting a strange smell, sound or smoke, disconnect the power plug IMMEDIATELY and contact a Service Center.



Make sure that the ventilating openings are not blocked by a table or curtain.



Do not engage the LCD monitor in severe vibration or high impact conditions during operation.



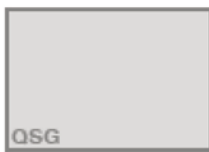
Do not knock or drop the monitor during operation or transportation.

Setup

Contents in Box



Monitor



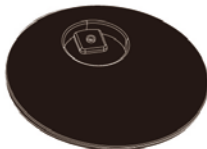
QSG



CD MANUAL



USB Cable



Base

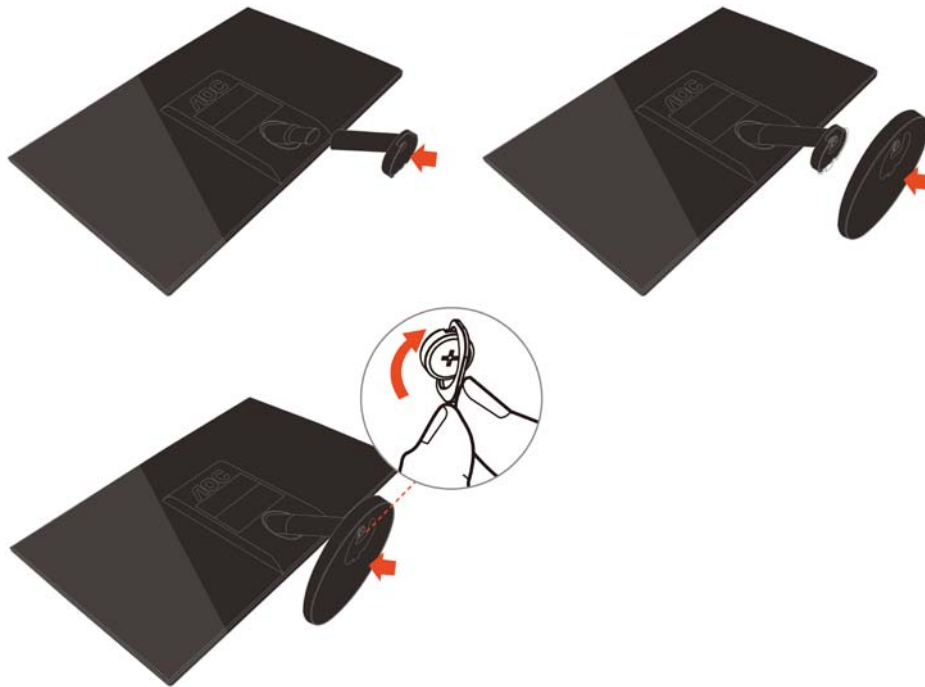


Stand

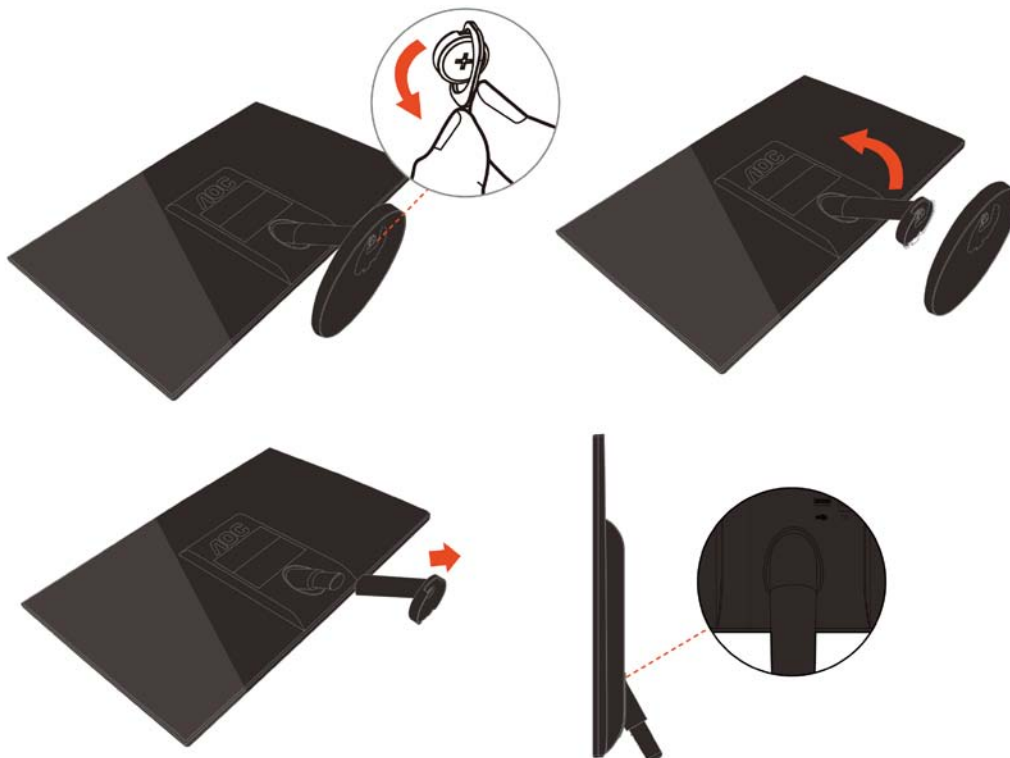
Setup Stand

Please setup the stand following the steps as below.

Setup:

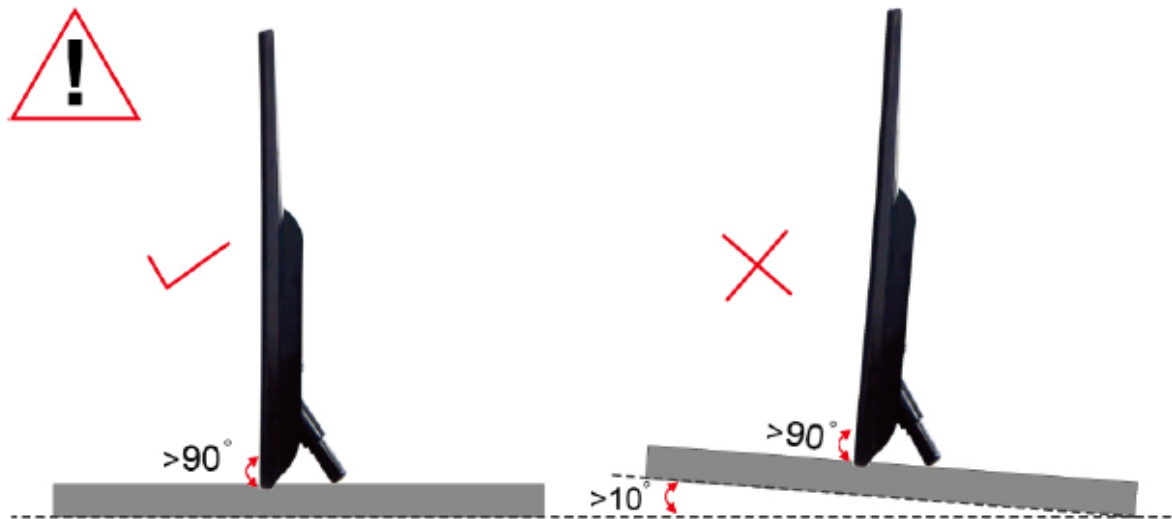


Remove:



Caution:

Must put unit in flat surface. Any uneven or sloped surface may result in unit damage or injury to user.

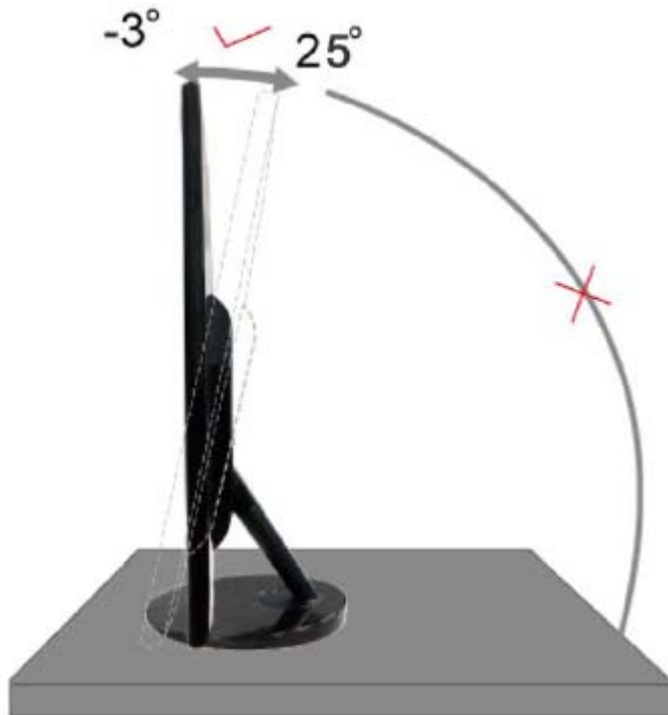


Adjusting Viewing Angle

For optimal viewing, it is recommended to look at the full face of the monitor, and then adjust the monitor's angle to your own preference.

Hold the stand so you will not topple the monitor when you change the monitor's angle.

You are able to adjust the monitor's angle as below.



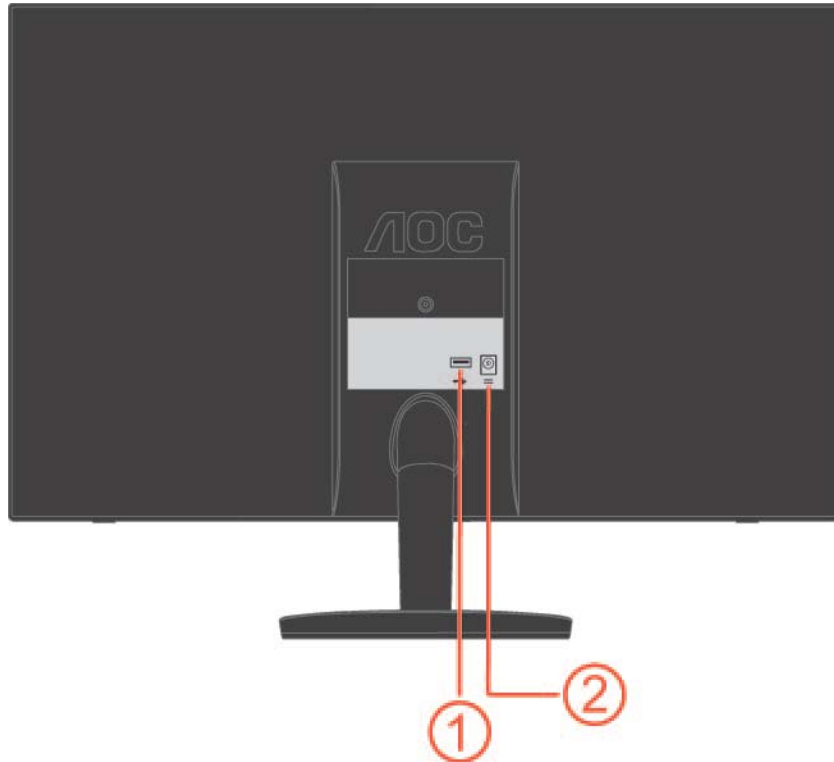
NOTE:

Do not touch the LCD screen when you change the angle. It may cause damage or break the LCD screen.

Connecting the Monitor

Cable Connections In Rear of Monitor to Connect PC/Laptop:

Important!! Follow the software installation described on page 11 to 15 before connecting the USB monitor to your Laptop/PC.



1 Connecting the LCD monitor to your computer

To protect the equipment, always turn off the computer before connecting.

- Connect one end of the USB cable to the LCD monitor and the end of USB cable to the computer.
- Your computer should detect the USB Monitor automatically.

Follow the procedure described starting on page 16 to configure your USB Monitor.

2 Power

Note: Some computers may not provide enough power to the LCD monitor for one USB port.

If so, connect the other USB connector on the Y end of the cable into another USB on your computer or connect the DC input port with an external approved adapter with the output rating of DC 5V, 3A.

Installation of USB Graphic software on your computer

For Microsoft ® Windows® 7

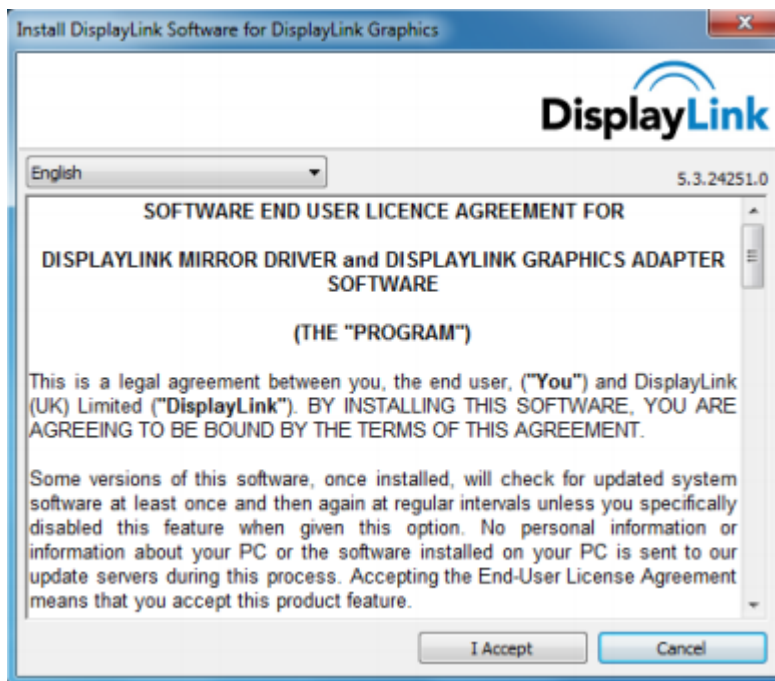
Important!! Install the USB Graphic software first before connecting the USB monitor to your computer.

1. Double click on **Setup.exe**.

The Windows User Account Control window opens (if enabled in the OS).

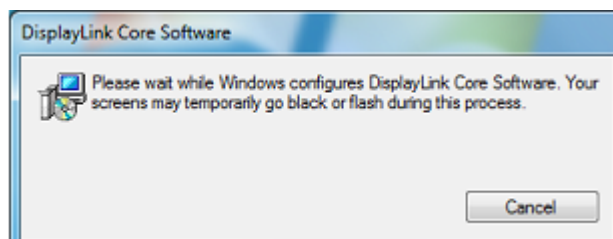
2. Click **Yes**.

The USB Monitor software end user license agreement window opens.



3. Click **I Accept**.

DisplayLink Core software and DisplayLink Graphics installs.

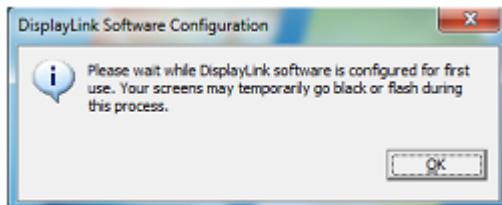


Note: The screen may flash or go black during the installation. The installation box above will disappear but no message will be shown at the end of the installation.

4. Connect your AOC USB Monitor via the USB cable to your PC/Notebook. Installing device driver message will be shown on the taskbar.



The Windows User Account control window opens.



5. Click **YES**.

DisplayLink will automatically install the AOC USB Monitor.

The DisplayLink software end user license agreement windows opens (see above).

6. Click **I Accept**.

The DisplayLink USB Graphics software installs, without notification that it has completed.

Note: On some machines you may need reboot before you can use your AOC USB Monitor.

For Microsoft® Windows Vista®

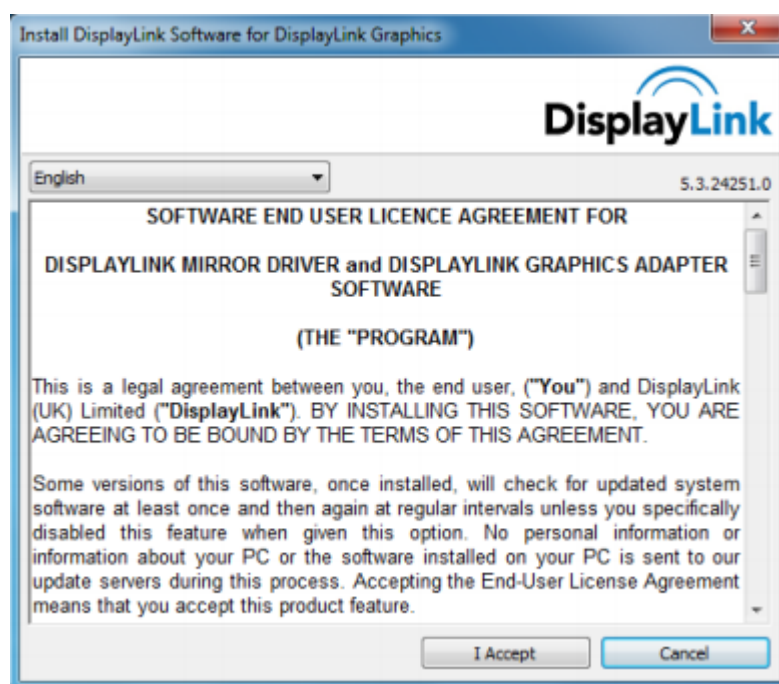
Important!! DO NOT connect USB Monitor to your PC/Notebook before the software install.

1. Double click on **Setup.exe**.

The Windows User Account Control window opens (if enabled in the OS).

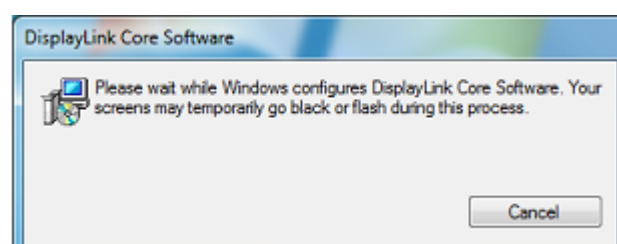
2. Click **Yes**.

The USB Monitor software end user license agreement window opens.



3. Click **I Accept**.

DisplayLink Core software and DisplayLink Graphics installs.

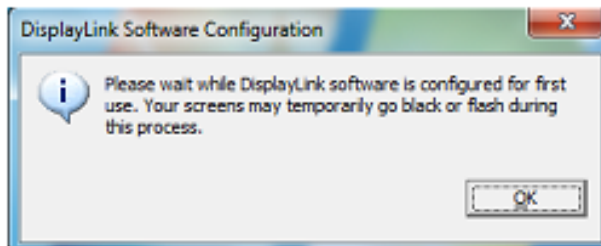


Note: The screen may flash or go black during the installation. The installation box above will disappear but no message will be shown at the end of the installation.

4. Connect your AOC USB Monitor via the USB cable to your PC/Notebook. Installing device driver message



The Windows User Account control window opens.



5. Click **YES**.

DisplayLink automatically installs the AOC USB Monitor.

The DisplayLink software end user license agreement windows opens (see above).

6. Click **I Accept**.

The DisplayLink USB Graphics software installs, without notification that it has completed.

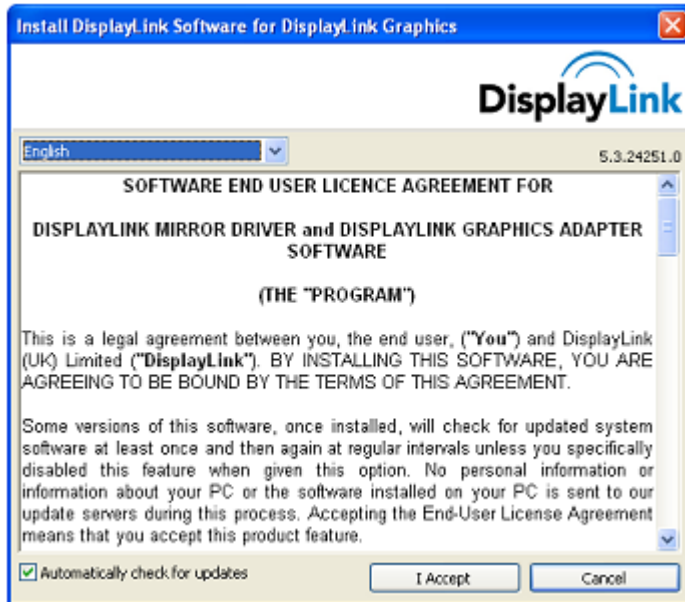
Note: On some machines you may need reboot before you can use your AOC USB Monitor.

For Microsoft® Windows® XP

Important!! DO NOT connect USB Monitor to your PC/Notebook before the software install.

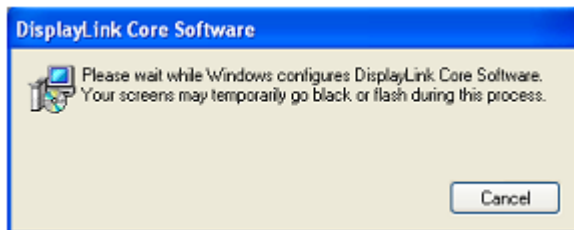
1. Double click on **Setup.exe**.

The Windows User Account Control window opens (if enabled in the OS).



2. Click **I Accept**.

DisplayLink core software and DisplayLink Graphics installs.



Note: The screen may flash or go black during the installation.

3. Connect your AOC USB Monitor via the USB cable to your PC/Notebook. The following message (or similar) will be seen.



Windows installs the AOC USB Monitor device.


Note: The screen may flash or go black during the installation.

Setting the USB Monitor

Follow this procedure to configure the AOC Monitor

1. Open screen resolution
2. Set the display options. Refer to the table below for details on each option.

Menu	Sub-Menu	Description
Display		Use the drop down list to select a display to be configured.
Resolution		Use the drop down list and user the slider to choose a resolution
Orientation	Landscape	Set the display to landscape view
	Portrait	Set the display to portrait mode
	Landscape (flipped)	Set the display to upside down landscape mode
	Portrait (flipped)	Set the display to upside down portrait mode
Multiple Displays	Duplicates these displays	Reproduces the main display on the second display
	Extend these displays	Extends the main display on the secondary display
	Show Desktop only on 1	The desktop appears on the display marked 1. The display marked 2 become blank.
	Shows Desktop only on 2	The desktop appears on the display marked 2. The display marked 1 become blank.

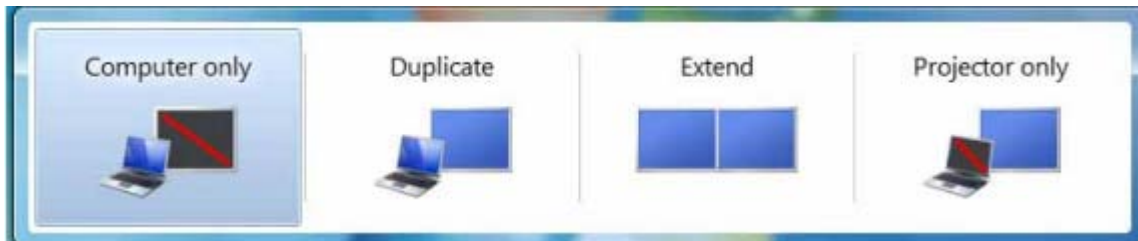
To control the behavior of an attached AOC USB monitor, it is also possible to use Windows Key () + P to display a menu (and cycle through it) to switch mode.

To Control the Display


You can use the AOC USB LCD monitor in mirror mode or extended mode. Settings may vary depending on your operating system.

For Microsoft® Windows® 7


Press the Windows® key (⊞) + P to switch between different modes as shown below.



For Microsoft® Windows® XP and Microsoft® Windows Vista®

Right-click the “” icon in the system tray of your Windows ® desktop to configure the display settings.

Disconnecting the LCD Monitor

1. For Microsoft® Windows® 7 only, you can turn the monitor OFF by pressing the Windows key (⊞) + P, and then selecting “Computer only”.
For Microsoft® Windows vista® and Windows® XP, you can select OFF by right-Clicking the “” icon in the system tray.
2. Remove the USB cable from the computer and monitor.

Cleaning the LCD Monitor

Please follow the guidelines below when cleaning the LCD Monitor:

- Always unplug the monitor before cleaning.
- Use a soft cloth to wipe the screen and other parts of the monitor
- Never spray liquids directly onto the LCD screen or use harsh chemical products to clean it.

Precautions:

for Microsoft® Windows® XP, Windows Vista® and Windows® 7

Due to the configurations of computers and Windows® operating systems available, functionality may differ slightly than stated in the user manual. This may be due to the computer manufacturer's BIOS and other custom configurations of the hardware, pre-installed software or operating system installed at time of production. If you have specific problems, you may need to contact the computer manufacturer to inquire about BIOS, hardware driver or operating system updates.

- The AOC USB Monitor utilizes an advanced video graphics controller to display the video. However, due to USB 2.0 transfer speed limitations, some or all portions of DVD playback may appear slow or choppy. This is not a malfunction of the Mobile LCD monitor. Move the video playback from the Mobile LCD monitor to your computer display for optimal video performance when viewing DVDs.
- On Windows® XP systems, DVDs may not display correctly on the Mobile LCD monitor. Use your computer's built-in monitor to view DVDs.
- This product does not support 3D programs.
- In some software application programs that utilize certain direct draw commands such as some 2D-Games, the display on the Mobile LCD monitor will not be supported. If you want to play these games in full screen, we suggest you disconnect the Mobile LCD monitor.
- This product is unable to enter full screen DOS mode when using the Mobile LCD monitor.
- To play DVDs, use the Media Player included with your operating system.

Supported Media Player

- Windows Media Player 11 (Windows Media Player 12. For windows 7)
- WinDVD 10
- PowerDVD 9 (Only for Windows Vista and 7)
- RealPlayer 11

The DisplayLink USB Graphics device can display media files and DVDs using most media players. **But can't guarantee performance**, Media playback in mirror mode (XP) or in Basic mode (Vista and Windows 7) is not recommended.

PC Requirements

DisplayLink software can be used on PCs, from Netbooks, Notebooks/Laptops to Desktops. The driver will run on processors ranging from Atom N270 based PCs, basic single Core CPUs, and of course the latest Dual, Quad Core and Core i3/i5/i7 CPUs.

The performance of the software is dependent upon the processing power available, as well as the operating system in use. More capable systems offer higher performance.

DisplayLink software is available for PCs running one of the following Windows operating systems:

- Windows 7 (32-bit or 64-bit)
- Windows Vista with Service Pack 1 or 2 (32-bit or 64-bit)
- Windows XP Home or Professional (including Tablet edition) with Service Pack 2 or 3
- Windows Server 2003, 2008 and 2008 R2

DisplayLink provide a version of Software for Windows Multipoint server. Please visit http://www.displaylink.com/support/downloads_wms.php to download software for Windows Multipoint Server.

Note: 64-bit editions of XP are not supported. Mac OS X support can be found at <http://www.displaylink.com/mac>

Windows 7

For Windows 7, the Windows Experience Index (WEI) is a useful measure of hardware level. The WEI is accessible from Computer > Properties, or from Control Panel > System.

The recommended typical hardware requirements for the PC are:

- WEI score of at least 3 in the 'Graphics; Desktop performance for Windows Aero' category.
- Overall WEI score of at least 3 as recommended by Microsoft.
- At least one USB 2.0 port.
- 30 megabytes (MB) of free disk space.
- Computer screen for use with the DisplayLink device, if it is not integrated.
- Network access for software downloads, or access to a CD-ROM drive.

Windows Vista

For Windows Vista, the Windows Experience Index (WEI) is a useful measure of hardware level. The WEI is accessible from Computer > Properties, or from Control Panel > System.

The recommended typical hardware requirements for the PC are:

- WEI score of at least 3 in the 'Graphics; Desktop performance for Windows Aero' category.
- Overall WEI score of at least 3 as recommended by Microsoft.
- At least one USB 2.0 port
- 30 megabytes (MB) of free disk space.
- Computer screen for use with the DisplayLink device, if it is not integrated.
- Network access for software downloads, or access to a CD-ROM drive.

If the PC specification is below this, performance will be lower (or CPU loading higher than acceptable).

Windows XP

For 1-2 monitors, business usage, productivity target. This may not provide full frame rate DVD playback at full screen.

- 1.2GHz Single Core CPU
- 512MB memory

For 3 monitors where 1 could run DVD video while also targeting productivity and business apps. Will support only 1 video of DVD resolution at full screen:

- 1.6GHz CPU
- 1GB memory

For 6 screens where 1 screen can run full screen DVD video:

- 1.8GHz Core Duo
- 1GB memory
- At least one USB 2.0 port.
- 30 megabytes (MB) of free disk space.
- Computer screen for use with the DisplayLink device, if it is not integrated.
- Network access for software downloads, or access to a CD-ROM drive.

Graphics Card Support (Windows Vista/Windows 7)

On Windows Vista and Windows 7, DisplayLink software interacts closely with the primary graphics card. DisplayLink support and test a single graphics card (GPU) installed in a PC from all major GPU vendors (Intel, ATI, NVidia and Via)

The following GPU configurations may exhibit compatibility issues on Windows 7 and Vista in certain circumstances:

- Switchable Graphics (ATI/Intel)
- Switchable Graphics (ATI/ATI)
- Switchable Graphics (NVIDIA/Intel)
- NVIDIA SLI in SLI mode

Other GPU configurations, including the following, are currently unsupported and will not function on Windows 7/Vista:

- Hybrid Graphics
- Hybrid SLI
- Hybrid Crossfire
- Crossfire
- SLI not in SLI mode
- Multiple WDDM 1.1 graphics drivers active at once

Graphics Card Support (Windows XP)

All graphics cards are supported on Windows XP.

Troubleshooting

This section provides tips for correcting problems, should any occur. It also describes how to contact AOC should you encounter problems that you cannot resolve.

Before you call AOC service center, please read the troubleshooting advice in this manual and in your computer User's Manual. You may also want to consult with your system administrator or company technical support staff.

Problem & Question	Possible Solutions
The monitor does not turn on	Check the connectors. Make sure the USB cable is firmly connected to the monitor Disconnect and reconnect the USB cable again. Check the condition of the USB cable. If the cable is frayed or damaged, replace the cable. If the connectors are soiled, wipe them with a clean cloth.
The screen is blank, although the computer power is on	Make sure the USB cable is properly connected the computer. Make sure the computer is on and working. The computer may be in sleep or power-saving mode, or displaying a blank screen saver. Move the mouse to “wake up” the computer.
The picture “bounces” or moves in a wave-like pattern	Move electrical devices that may cause electrical interference away from the monitor.
Cannot play DVDs using the Third-Party DVD player program	Use the Media Player included in your operating system.

Specification

General Specification

Panel	Model name	E2251F _{wu}
	Driving system	TFT Color LCD
	Viewable Image Size	546.7 mm diagonal
	Pixel pitch	0.2482 (H)mm x 0.2482 (V)mm
	Video	R, G, B Analog interface
	Separate Sync.	NA
	Display Color	16.7M Colors
	Dot Clock	148.5MHz
Resolution	Horizontal scan range	67.5Khz
	Horizontal scan Size(Maximum)	476.64mm
	Vertical scan range	60Hz
	Vertical scan Size(Maximum)	268.11mm
	Optimal preset resolution	1920×1080 @60Hz
	Plug & Play	VESA DDC2B
	Input Connector	A-type USB
	Input Video Signal	NA
	Power Source	PC USB 5V
	Power Consumption	15 W
		Standby <1 W
Off timer	NA	
Physical Characteristics	Connector Type	A-type USB
	Signal Cable Type	Detachable
	Dimensions & Weight:	
	Height	389.1mm
	Width	512.2mm
	Depth	193.7mm
	Weight (monitor only)	2.65kg
	Weight (with packaging)	
Environmental	Temperature:	
	Operating	0° to 40°
	Non-Operating	-25°to 55°
	Humidity:	
	Operating	10% to 85% (non-condensing)
	Non-Operating	5% to 93% (non-condensing)
	Altitude:	
	Operating	0~ 3658m (0~ 12000 ft)
Non-Operating	0~ 12192m (0~ 40000 ft)	

Regulation

FCC Notice

FCC Class B Radio Frequency Interference Statement WARNING: (FOR FCC CERTIFIED MODELS)

NOTE: This equipment has been tested and found to comply with the limits for a Class B digital device, pursuant to Part 15 of the FCC Rules. These limits are designed to provide reasonable protection against harmful interference in a residential installation. This equipment generates, uses and can radiate radio frequency energy, and if not installed and used in accordance with the instructions, may cause harmful interference to radio communications. However, there is no guarantee that interference will not occur in a particular installation. If this equipment does cause harmful interference to radio or television reception, which can be determined by turning the equipment off and on, the user is encouraged to try to correct the interference by one or more of the following measures:

Reorient or relocate the receiving antenna.

Increase the separation between the equipment and receiver.

Connect the equipment into an outlet on a circuit different from that to which the receiver is connected.

Consult the dealer or an experienced radio/TV technician for help.

NOTICE:

The changes or modifications not expressly approved by the party responsible for compliance could void the user's authority to operate the equipment.

Shielded interface cables and AC power cord, if any, must be used in order to comply with the emission limits.

The manufacturer is not responsible for any radio or TV interference caused by unauthorized modification to this equipment. It is the responsibilities of the user to correct such interference. It is the responsibility of the user to correct such interference.

WEEE Declaration

Disposal of Waste Equipment by Users in Private Household in the European Union.



This symbol on the product or on its packaging indicates that this product must not be disposed of with your other household waste. Instead, it is your responsibility to dispose of your waste equipment by handing it over to a designated collection point for the recycling of waste electrical and electronic equipment. The separate collection and recycling of your waste equipment at the time of disposal will help to conserve natural resources and ensure that it is recycled in a manner that protects human health and the environment. For more information about where you can drop off your waste equipment for recycling, please contact your local city office, your household waste disposal service or the shop where you purchased the product.

EPA Energy Star



ENERGY STAR® is a U.S. registered mark. As an ENERGY STAR® Partner, AOC International (Europe) BV and Envision Peripherals, Inc. have determined that this product meets the ENERGY STAR® guidelines for energy efficiency.

Service

Warranty Statement for Europe

LIMITED THREE-YEAR WARRANTY*

AOC Color Monitors sold within Europe

AOC International (Europe) BV warrants this product to be free from defects in material and workmanship for a period of Three (3) years after the original date of consumer purchase. During this period, AOC International (Europe) BV will, at its option, either repair the defective product with new or rebuilt parts, or replace it with a new or rebuilt product at no charge except as *stated below. The defective products that are replaced become the property of AOC International (Europe) BV.

If the product appears to be defective, please contact your local dealer or refer to the warranty card when attached to the product.

Deliver the product freight pre-paid, along with the dated proof of purchase, to the AOC Authorized Service Center. If you cannot deliver the product in person:

- Pack it in its original shipping container (or equivalent)
- Put the RMA number on the address label
- Put the RMA number on the shipping carton
- Insure it (or assume the risk of loss/damage during shipment)
- Pay all shipping charges

AOC International (Europe) BV is responsible neither for any damage or loss during inbound transport damage nor to inbound product that was not properly packaged.

AOC International (Europe) BV will pay the return shipping charges within one of the countries specified within this warranty statement. AOC International (Europe) BV is not responsible for any costs associated with the transportation of product across international borders. This includes the international border within the European Union.

* This limited warranty does not cover any losses or damages that occur as a result of

- Shipping or improper installation or maintenance
- Misuse
- Neglect
- Any cause other than ordinary commercial or industrial application
- Adjustment by non-authorized source
- Repair, modification, or installation of options or parts by anyone other than an AOC Authorized Service Center
- Improper environment
- Excessive or inadequate heating or air conditioning or electrical powers failures, surges, or other irregularities

This limited warranty does not cover any of the product firmware or hardware that you or any third party have modified or altered; you bear the sole responsibility and liability for any such modification or alteration.

ALL EXPRESS AND IMPLIED WARRANTIES FOR THIS PRODUCT (INCLUDING THE WARRANTIES OF MERCHANTABILITY AND FITNESS FOR A PARTICULAR PURPOSE) ARE LIMITED IN DURATION TO A PERIOD OF THREE (3) YEARS FOR PARTS AND LABOR FROM THE ORIGINAL DATE OF CONSUMER PURCHASE. NO WARRANTIES (EITHER EXPRESSED OR IMPLIED) APPLY AFTER THIS PERIOD.

AOC INTERNATIONAL (EUROPE) BV OBLIGATIONS AND YOUR REMEDIES HEREUNDER ARE SOLELY AND EXCLUSIVELY AS STATED HERE. AOC INTERNATIONAL (EUROPE) BV LIABILITY, WHETHER BASED ON CONTRACT, TORT, WARRANTY, STRICT LIABILITY, OR OTHER THEORY, SHALL NOT EXCEED THE PRICE OF THE INDIVIDUAL UNIT WHOSE DEFECT OR DAMAGE IS THE BASIS OF THE CLAIM. IN NO EVENT SHALL AOC INTERNATIONAL (EUROPE) BV BE LIABLE FOR ANY LOSS OF PROFITS, LOSS OF USE OR FACILITIES OR EQUIPMENT, OR OTHER INDIRECT, INCIDENTAL, OR CONSEQUENTIAL DAMAGE. SOME STATES DO NOT ALLOW THE EXCLUSION OR LIMITATION OF INCIDENTAL OR CONSEQUENTIAL DAMAGES, SO THE ABOVE LIMITATION MAY NOT APPLY TO YOU. ALTHOUGH THIS LIMITED WARRANTY GIVES YOU SPECIFIC LEGAL RIGHTS, YOU MAY HAVE OTHER RIGHTS, WHICH MAY VARY FROM COUNTRY TO COUNTRY. THIS LIMITED WARRANTY IS ONLY VALID FOR PRODUCTS PURCHASED IN THE MEMBER COUNTRIES OF THE EUROPEAN UNION.

Information in this document is subject to change without notice.

For more details, please visit: <http://www.aoc-europe.com/en/service/index.php>

Warranty Statement for North & South America (excluding Brazil)

WARRANTY STATEMENT

for AOC Color Monitors

Including those Sold within North America as Specified

Envision Peripherals, Inc. warrants this product to be free from defects in material and workmanship for a period of three (3) years for parts & labor and one (1) year for CRT Tube or LCD Panel after the original date of consumer purchase. During this period, EPI (EPI is the abbreviation of Envision Peripherals, Inc.) will, at its option, either repair the defective product with new or rebuilt parts, or replace it with a new or rebuilt product at no charge except as *stated below. The parts or product that are replaced become the property of EPI.

In the USA to obtain service under this limited warranty, call EPI for the name of the Authorized Service Center closest to your area. Deliver the product freight pre-paid, along with the dated proof of purchase, to the EPI Authorized Service Center. If you cannot deliver the product in person:

- Pack it in its original shipping container (or equivalent)
- Put the RMA number on the address label
- Put the RMA number on the shipping carton
- Insure it (or assume the risk of loss/damage during shipment)
- Pay all shipping charges

EPI is not responsible for damage to inbound product that was not properly packaged.

EPI will pay the return shipment charges within one of the countries specified within this warranty statement. EPI is not responsible for any costs associated with the transportation of product across international borders. This includes the international borders of the countries within this warranty statements.

In the United States and Canada contact your Dealer or EPI Customer Service, RMA Department at the toll free number (888) 662-9888. Or you can request an RMA Number online at www.aoc.com/na-warranty.

* This limited warranty does not cover any losses or damages that occur as a result of:

- Shipping or improper installation or maintenance
- Misuse
- Neglect
- Any cause other than ordinary commercial or industrial application
- Adjustment by non-authorized source
- Repair, modification, or installation of options or parts by anyone other than an EPI Authorized Service Center
- Improper environment
- Excessive or inadequate heating or air conditioning or electrical power failures, surges, or other irregularities

This three-year limited warranty does not cover any of the product's firmware or hardware that you or any third party have modified or altered; you bear the sole responsibility and liability for any such modification or alteration.

ALL EXPRESS AND IMPLIED WARRANTIES FOR THIS PRODUCT (INCLUDING THE WARRANTIES OF MERCHANTABILITY AND FITNESS FOR A PARTICULAR PURPOSE) ARE LIMITED IN DURATION TO A PERIOD OF THREE (3) YEARS FOR PARTS AND LABOR AND ONE (1) YEAR FOR CRT TUBE OR LCD PANEL FROM THE ORIGINAL DATE OF CONSUMER PURCHASE. NO WARRANTIES (EITHER EXPRESSED OR IMPLIED) APPLY AFTER THIS PERIOD. IN THE UNITED STATES OF AMERICA, SOME STATES DO NOT ALLOW LIMITATIONS ON HOW LONG AN IMPLIED WARRANTY LASTS, SO THE ABOVE LIMITATIONS MAY NOT APPLY TO YOU.

EPI OBLIGATIONS AND YOUR REMEDIES HEREUNDER ARE SOLELY AND EXCLUSIVELY AS STATED HERE. EPI' LIABILITY, WHETHER BASED ON CONTRACT, TORT, WARRANTY, STRICT LIABILITY, OR OTHER THEORY, SHALL NOT EXCEED THE PRICE OF THE INDIVIDUAL UNIT WHOSE DEFECT OR DAMAGE IS THE BASIS OF THE CLAIM. IN NO EVENT SHALL ENVISION PERIPHERALS, INC. BE LIABLE FOR ANY LOSS OF PROFITS, LOSS OF USE OR FACILITIES OR EQUIPMENT OR OTHER INDIRECT, INCIDENTAL, OR CONSEQUENTIAL DAMAGE. IN THE UNITED STATES OF AMERICA, SOME STATES DO NOT ALLOW THE EXCLUSION OR LIMITATION OF INCIDENTAL OR CONSEQUENTIAL DAMAGES. SO THE ABOVE LIMITATION MAY NOT APPLY TO YOU. ALTHOUGH THIS LIMITED WARRANTY GIVES YOU SPECIFIC LEGAL RIGHTS. YOU MAY HAVE OTHER RIGHTS WHICH MAY VARY FROM STATE TO STATE.

In the United States of America, this limited warranty is only valid for Products purchased in the Continental United States, Alaska, and Hawaii.

Outside the United States of America, this limited warranty is only valid for Products purchased in Canada.

Information in this document is subject to change without notice.

For more details, please visit:

USA: <http://us.aoc.com/support/warranty>

ARGENTINA: <http://ar.aoc.com/support/warranty>

BOLIVIA: <http://bo.aoc.com/support/warranty>

CHILE: <http://cl.aoc.com/support/warranty>

COLOMBIA: <http://co.aoc.com/warranty>

COSTA RICA: <http://cr.aoc.com/support/warranty>

DOMINICAN REPUBLIC: <http://do.aoc.com/support/warranty>

ECUADOR: <http://ec.aoc.com/support/warranty>

EL SALVADOR: <http://sv.aoc.com/support/warranty>

GUATEMALA: <http://gt.aoc.com/support/warranty>

HONDURAS: <http://hn.aoc.com/support/warranty>

NICARAGUA: <http://ni.aoc.com/support/warranty>

PANAMA: <http://pa.aoc.com/support/warranty>

PARAGUAY: <http://py.aoc.com/support/warranty>

PERU: <http://pe.aoc.com/support/warranty>

URUGUAY: <http://pe.aoc.com/warranty>

VENEZUELA: <http://ve.aoc.com/support/warranty>

IF COUNTRY NOT LISTED: <http://latin.aoc.com/warranty>

CE Declaration of Conformity

For the following equipment:

LCD Monitor

(Product Name)

E2251FWu

(Model Designation / Brand Name)

is herewith confirmed to comply with the requirements set out in the Council Directive on the Approximation of the Laws of the Member States relating to Electromagnetic Compatibility (2004/108/EC), Low-voltage Directive (2006/95/EC), ErP Directive (2005/32/EC). For the evaluation regarding the Directives, the following standards were applied:

STANDARDS	Report/Technical File
EN 55022:2006+A1:2007, Class B EN 61000-3-2: 2006 EN 61000-3-3: 2008 EN 55024: 1998+A1:2001+A2:2003	1110041 Tested by: Audix Technology(Shenzhen)CO.,LTD
EN 60950-1: 2006+A11:2009	17019448 Tested by:TUV
EN 62301: 2005	TPVRDSE- E2251FWu -EUP Tested by:TPV
CE Mark first affixed in: 2011	

The following importer/manufacturer is responsible for this declaration:

(Company Name, Importer)

(Company Address, Importer)

Person responsible for this declaration:

(Name, Surname, Importer)

(Position/Title)

(Legal Signature)

(Place)

(Date)

TPV ELECTRONICS (Fujian) CO., LTD.

(Company Name, Manufacturer)

**Shangzheng, Yuanhong
Road, FuQing, Fujian, China**

(Company Address, Manufacturer)

Person responsible for this declaration:

Jingle.Xie

(Name, Surname, Manufacturer)

Manager of Safety Department

(Position/Title)

(Legal Signature)

China

(Place)

November 10, 2011

(Date)



Only for AOC branded monitors sold within the continental United States.

All AOC branded monitors are now covered by the EASE Program. If your monitor malfunctions at any time during the first three months, AOC will provide a replacement monitor within 72 hours after you are approved for our program. If your monitor qualifies for the EASE program, AOC will pay for freight both ways.

Step 1: Phone our TECH Department at 888.662.9888

Step 2: Fill out and return EASE registration forms by mail or fax.

Step 3: We will issue a Return Authorization Number upon verification into the program.

Step 4: A monitor will be advance shipped to your location.

Step 5: We will issue a UPS Call Tag to pick up the defective unit.

Step 6: Please review the following chart to see your EASE program qualifications.

WARRANTY PERIOD	COVERAGE AT NO CHARGE	CUSTOMER CHARGES
Within the first three months of purchase: Covered by EASE	- New AOC monitor - Call tag dispatched and return freight charges via UPS	- None*
Between 4 months – 1 Year	- All Parts & Labor Including CRT Tube & LCD Panel	- UPS Return Freight to AOC
Between 1 Year - 3 Years: Covered by standard limited warranty	- Parts & Labor (excluding CRT Tube & LCD Panel)	- UPS Return Freight to AOC

*AOC will need to obtain a credit card number if you would like to get a new AOC monitor advanced shipped to your location, prior to the defective unit arriving at AOC's service center. If you do not wish to supply a credit card, AOC will only ship the new monitor, once the defective unit arrives at the AOC service center.

AOC[®]

www.us.aoc.com

Download from www.Somanuals.com. All Manuals Search And Download.

Free Manuals Download Website

<http://myh66.com>

<http://usermanuals.us>

<http://www.somanuals.com>

<http://www.4manuals.cc>

<http://www.manual-lib.com>

<http://www.404manual.com>

<http://www.luxmanual.com>

<http://aubethermostatmanual.com>

Golf course search by state

<http://golfingnear.com>

Email search by domain

<http://emailbydomain.com>

Auto manuals search

<http://auto.somanuals.com>

TV manuals search

<http://tv.somanuals.com>