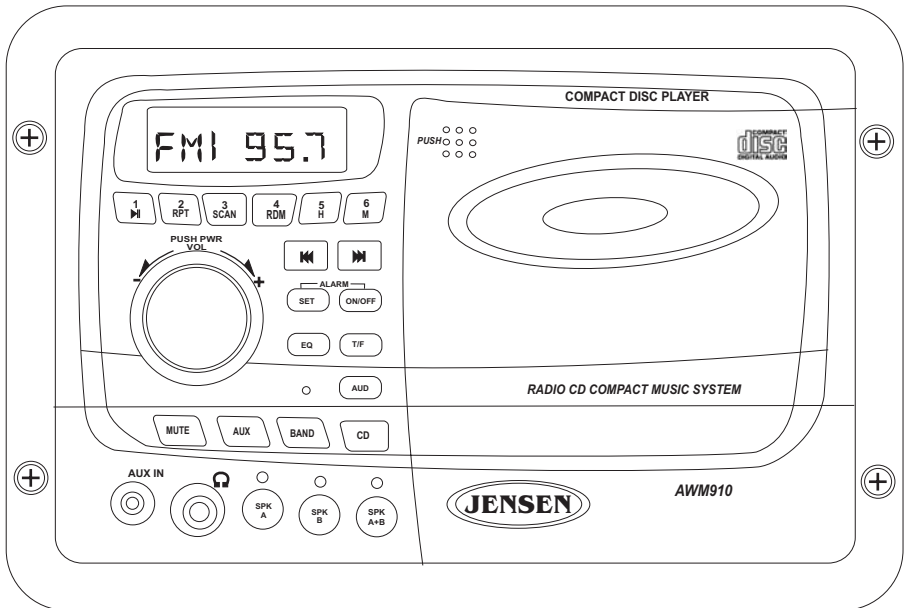




DESIGNED TO MOVE

AWM910

Owner's Manual





Thank You!

Thank you for choosing a Jensen product. We hope you will find the instructions in this owner's manual clear and easy to follow. If you take a few minutes to look through it, you'll learn how to use all the features of your new Jensen receiver for maximum enjoyment.

Table of Contents	2
Features	3
Installation	4
Wiring	5
Basic Operation	6
Tuner Operation	8
CD Operation	10
Specifications	12

Features

Features of the Jensen AWM910 mobile audio system include:

- Auto Dimming LCD Display Backlighting
- Backlit Controls and Display
- Electronic AM/FM Tuner
- Three preset EQ Modes
- Rotary Volume Control
- Time/Alarm Clock
- Vertical CD Mechanism for Audio CD, CD-R, CD-RW
- 4-Channel Amplified Audio Output (50W Total)
- Front Aux Audio Input (3.5mm stereo jack)
- ¼" Headphone Output on Front Panel

Installation

Select Mounting Location

Select a mounting location, taking care to avoid the following:

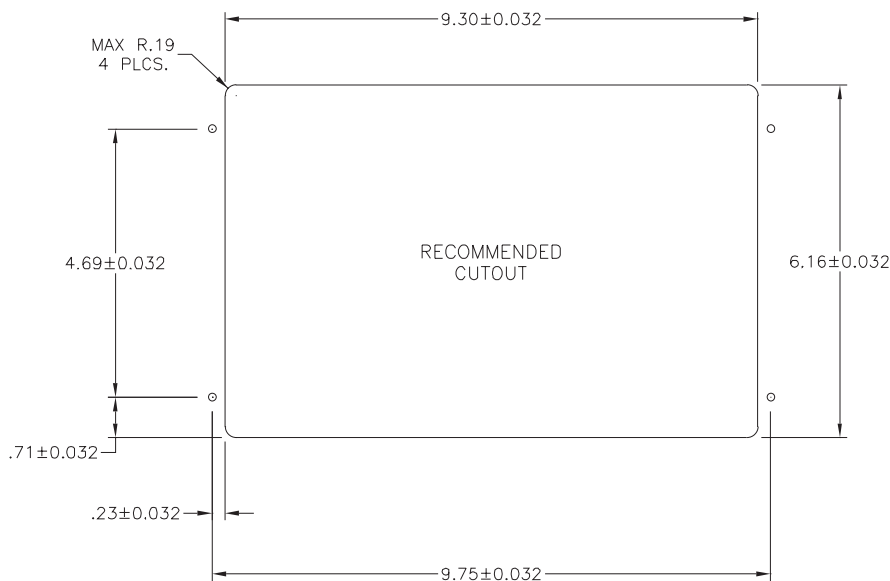
- Places exposed to heat-radiating appliances such as electric heaters
- Adjacent to other equipment that radiates heat
- Poorly-ventilated or dusty places
- Moist or humid locations

Preparing the Opening

Use the mounting hole diagram (below) to measure and cut a mounting hole, and mount the unit using the four 3x20mm self-tapping screws provided.

Note: Before cutting the mounting hole, make sure the area behind the mounting location is clear of wires and fuel, vacuum and or brake lines.

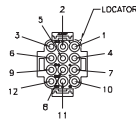
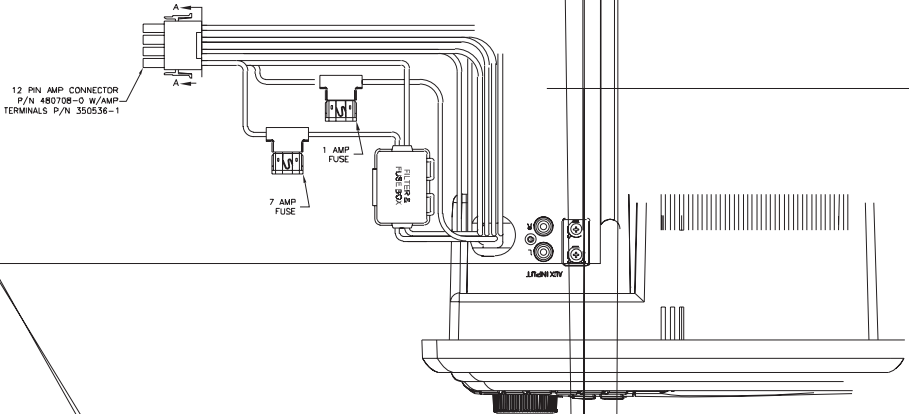
Mounting Hole Diagram



Mounting the Radio

Route power, speaker and antenna cables through the hole, and connect them to the unit as outlined in the wiring diagram. After ensuring correct connections, test operation.

AWM910



VIEW A-A
WIRE INSERTION VIEW

PIN NO.	COLOR	FUNCTION
1	BLACK/WHITE	POWER GROUND (-12VDC)
2	GREEN/WHITE	+12VDC BATTERY POWER
3	ORANGE/WHITE	+12VDC IGNITION POWER
4	YELLOW	RIGHT (B) SPEAKER (+)
5	LT. GREEN	RIGHT (A) SPEAKER (-)
6	WHITE	LEFT (A) SPEAKER (+)
7	GREEN/BLACK	RIGHT (B) SPEAKER (-)
8	RED	LEFT (B) SPEAKER (+)
9	VIOLET	LEFT (A) SPEAKER (-)
10	PINK	+12V DC TRIGGER WIRE
11	VIOLET/BLACK	LEFT (B) SPEAKER (-)
12	BLUE	RIGHT (A) SPEAKER (+)

Basic Operation

1. Power / Volume Control

Press the power button (1) to turn the unit on or off. This button also serves as the volume control knob; rotate clockwise or counterclockwise to increase or decrease the volume output.

2. Mute / Loudness

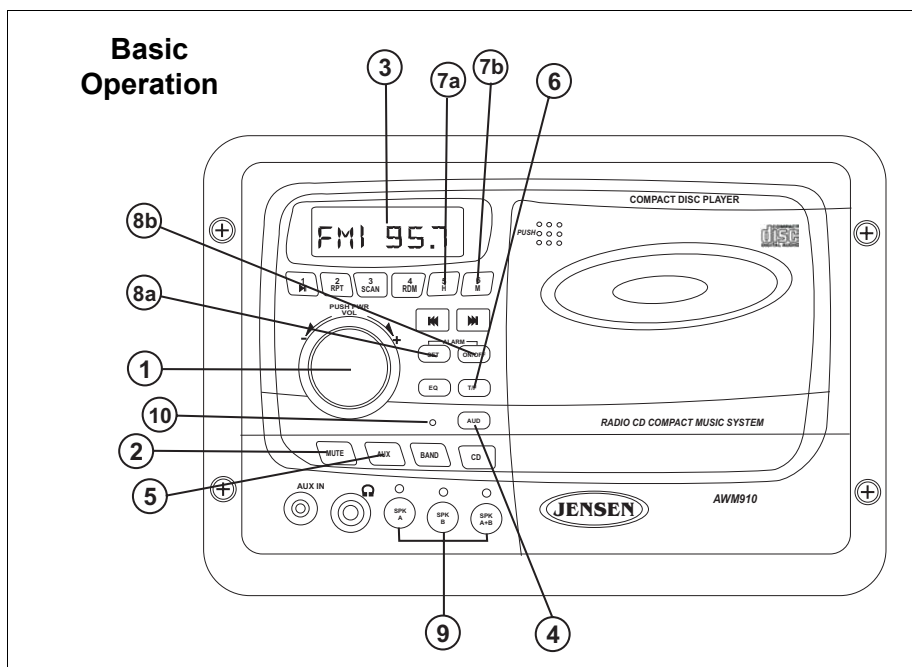
Press **MUTE** (2) momentarily to silence the audio output in tuner, CD or auxiliary input mode. Press **MUTE** again to resume the previous volume level.

3. Liquid Crystal Display (LCD)

The liquid crystal display (LCD) panel (3) displays the frequency, time and activated functions. **Note: When subjected to cold temperatures for an extended period of time, LCD panels will take longer to illuminate and the display visibility may slightly decrease. Optimal LCD operation will return to normal when the temperature increases to a normal range.**

4. Audio Adjustment

Press **AUD** (4) momentarily to step through the following audio adjustment options: Volume, Bass, Treble, Balance (left to right) and Speaker (A to B) and Fader (front to back). When the desired option appears in the display, rotate the volume control knob (1) to adjust that audio feature. When no adjustments have been made for three seconds, the unit will resume normal operation.



5. Auxiliary Input Function

Press **AUX** (5) to directly access auxiliary input mode from any other function mode when portable audio device is connected to the unit. To connect a portable audio device, insert a standard 3.5 mm (audio line output or headphone output from your portable CD / MP3 / iPod or other media player) into an "AUX IN" jack on the front or rear of the unit.

Note: For front panel AUX input, and external audio source such as an audio (MP3) player can be connected to the front panel AUX input with a separately purchased 3.5mm cable adapter. Connect the device to the AUX input on the front panel and press AUX to engage the input circuit.

6. Time/Frequency Display

Press **T/F** (6) momentarily to display the time while in Tuner, CD or auxiliary input mode.

7. Setting the Clock

Press **T/F** (6) to display the clock. Press and hold **T/F**, and the clock display will flash. While holding **T/F**, press **H** (7a) to adjust the hour or **M** (7b) to adjust the minute. The new time will be saved five seconds after the last adjustment is made.

8. Setting the Alarm

To set the alarm to a specific time, press and hold **ALARM SET** (8a), and the alarm time will flash in the display. While holding **ALARM SET**, press **H** (7a) to adjust the hour or **M** (7b) to adjust the minute. The new alarm time will be saved five seconds after the last adjustment is made. Once a time is set, press **ALARM ON/OFF** (8b) to turn the alarm function on or off.

9. Speaker Output

The three speaker output buttons (9) (**SPK A**, **SPK B** and **SPK A+B**) control speaker output from the radio. Press any of the three buttons to turn the corresponding speaker on or off. The red light above each button will illuminate when that speaker is turned on.

10. Reset

Use a ballpoint pen or other thin metal object to press the reset button (10) under the following circumstances: after the completion of initial installation/wiring, if none of the function buttons work or if an error symbol appears in the display.

Tuner Operation

11. Select a Band

Briefly press **BAND** (11) to change between two AM bands (AM1 and AM2) and three FM bands (FM1, FM2 and FM3).

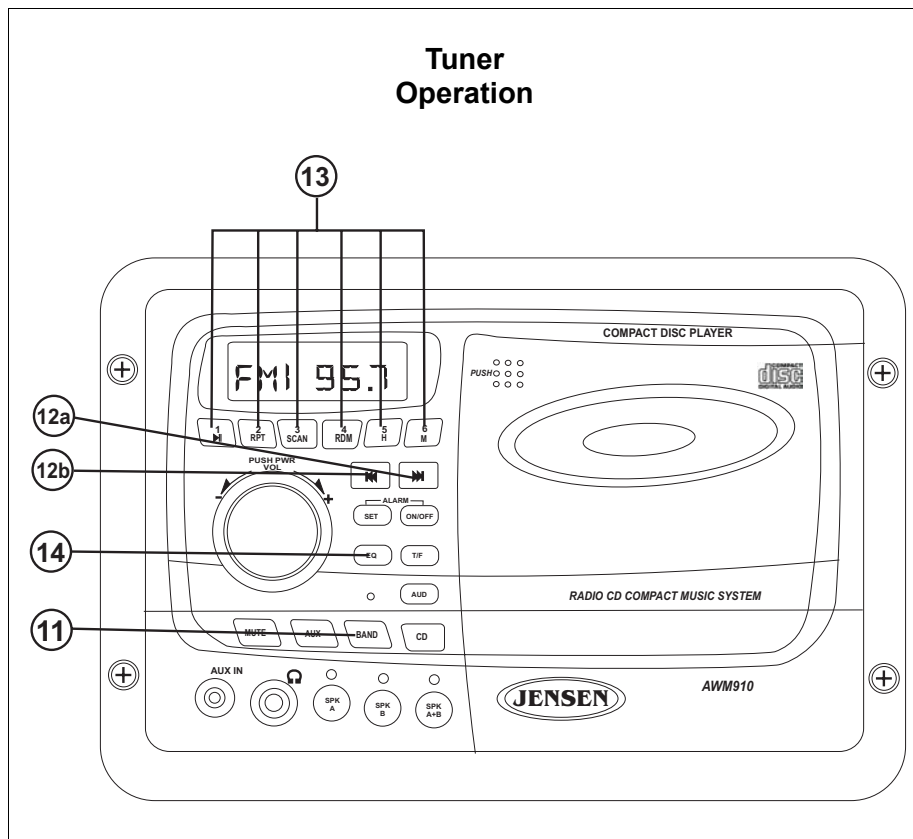
12. Tuning

Manual Tuning

Briefly press the tune up (12a) or tune down (12b) buttons to tune the frequency one step higher or lower.

Seek Tuning

Press and hold the tune up or tune down buttons to automatically tune up or down to the next strong station.



13. Preset Stations

Store Preset Stations

Six numbered preset buttons (13) store and recall stations for each AM and FM band. To store a station, select a band (if needed), then select a station. Hold a preset button for three seconds. The current station will be stored, and the corresponding preset number will appear in the display.

Recall Preset Stations

To recall a station, select a band (if needed). Press a preset button momentarily, and the unit will tune to the corresponding stored station.

14. Equalizer Selector

The equalizer function applies preset sound effects to the unit's audio output signal. Press **EQ** (14) to step through the following equalizer options: Rock, Pop, Classic and USER. The equalizer options will appear in the display as they are accessed. The Bass and Treble settings will be saved in USER mode.

15. Headphone Operation

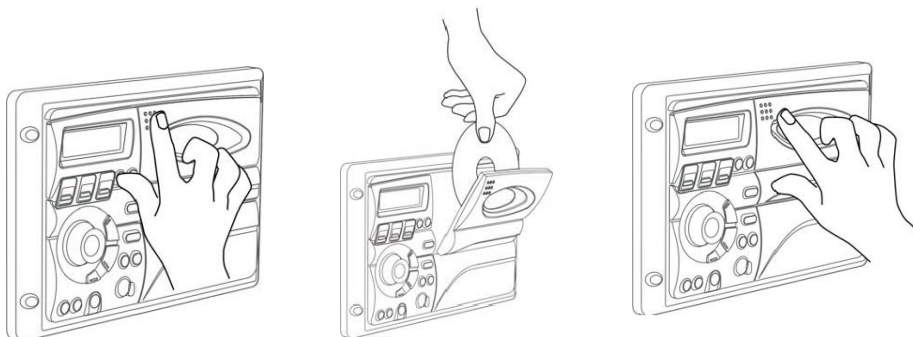
The headphone output is wired to the "A" speaker and is active when either "A" or "A & B" speaker button is active. To use this feature, plug the headphones in to the 1/4" jack (15) and adjust the volume to the desired level. When the headphones are plugged in, the speakers are automatically disabled.

CD Operation

16. Insert and Eject CD

Insert CD

Press **PUSH** (16) to open the CD door. Insert a CD label-side out. Close the CD door.



Eject CD

Press **PUSH** again to open the CD door and stop CD play.

17. Play

Press **CD** (17) to begin disc play.

18. Pause

Press the play/pause button (18) to suspend and resume disc play.

19. Track Select

Briefly press the tune up (19a) or tune down (19b) button to move to the next or previous track. Press and hold the tune up or tune down button to fast forward or fast reverse through the current track. Fast forward and fast reverse will stop when the button is released.

20. Repeat (RPT)

Press **RPT** (20) during disc play to continuously repeat the selected track. Press **RPT** again to stop repeating.

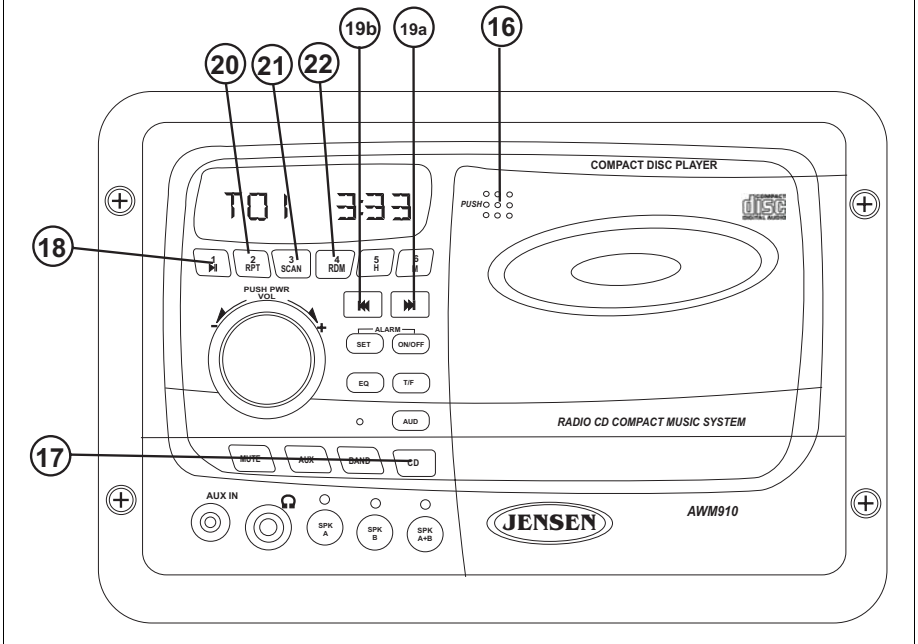
21. Intro Scan (SCAN)

Press **INT**(21) during disc play to play the first 10 seconds of each track on the current disc. Press **INT** again to end the scan and play the selected track.

22. Random Shuffle (RDM)

Press **RDM** (22) during disc play to play all tracks on a CD in random, shuffledsc plTer

CD Operation





Specifications

General

Power Supply Requirements	DC 12 Volts, Negative Ground
Operating Voltage	10-16VDC
Overall Dimensions	10-7/16"(W) x 7"(H) x 6-1/4"(D)
Mounting Dimensions	9-3/8"(W) x 6-1/8"(H) x 6-1/4"(D)
Weight	3.5 lbs.(1.7 Kg)

FM Tuner

Tuning range	87.5-107.9FM
Sensitivity	<5uV
Stereo separation @ 1 kHz	>30dB

AM Tuner

Tuning range	530-1710
Sensitivity	<30uV

CD Player

Frequency Response	20Hz to 20kHz
Signal to Noise	65dB
Compatible CD Formats	Audio CD, CD-R, R/W

Amplifier

Output Power	25 Watts per Channel
Output Wiring	2/4 Speaker and Headphone System
Output Impedance	Compatible with 4-8 Ohm Speakers, 4 Ohm Load Minimum
Total system power	50 Watts Maximum

Specifications subject to change without notice.

This device complies with Part 15 of the FCC Rules. Operation is subject to the following two conditions:

- (1) This device may not cause harmful interference, and
- (2) This device must accept any interference received, including interference that may cause undesired operation.

Note: The manufacturer is not responsible for any radio or TV interference caused by unauthorized modifications to this equipment. Such modifications could void the User's authority to operate the equipment.



www.asaelectronics.com
 © 2006 ASA Electronics Corporation
 v.120606

Free Manuals Download Website

<http://myh66.com>

<http://usermanuals.us>

<http://www.somanuals.com>

<http://www.4manuals.cc>

<http://www.manual-lib.com>

<http://www.404manual.com>

<http://www.luxmanual.com>

<http://aubethermostatmanual.com>

Golf course search by state

<http://golfingnear.com>

Email search by domain

<http://emailbydomain.com>

Auto manuals search

<http://auto.somanuals.com>

TV manuals search

<http://tv.somanuals.com>