

Congratulations, you and your iMac
were made for each other.

Say hello to your iMac.

www.apple.com/imac



Built-in iSight camera and iChat

Video chat with friends and family anywhere in the world.

Mac Help

 isight



Finder

Browse your files like you browse your music with Cover Flow.

Mac Help

 finder



Mail

Manage all your email accounts in one place.

Mac Help

 mail



iCal and Address Book

Keep your schedule and your contacts in sync.

Mac Help

 isync

Mac OS X Snow Leopard

www.apple.com/macosex



Time Machine

Automatically back up and restore your files.

Mac Help

 time machine



Quick Look

Instantly preview your files.

Mac Help

 quick look



Spotlight

Find anything on your Mac.

Mac Help

 spotlight



Safari

Experience the web with the fastest browser in the world.

Mac Help

 safari

iLife '11

www.apple.com/ilife



iPhoto

Turn your photos into something amazing.

iPhoto Help

 photos



iMovie

Make a great-looking movie in minutes.

iMovie Help

 movie



GarageBand

Create a great-sounding song with ease.

GarageBand Help

 record

Contents

Chapter 1: Ready, Set Up, Go

- 9 What's in the Box
- 10 Setting Up Your iMac
- 15 Putting Your iMac to Sleep or Shutting It Down

Chapter 2: Life with Your iMac

- 18 Basic Features of Your iMac
- 20 Ports on Your iMac
- 22 Other Components of Your iMac
- 24 Features of the Apple Wireless Keyboard and Magic Mouse
- 26 Using the Apple Wireless Keyboard
- 28 Using the Apple Magic Mouse
- 30 Using the Apple Remote
- 32 Getting Answers

Chapter 3: Boost Your Memory

- 37 Installing Memory
- 42 Making Sure Your iMac Recognizes the New Memory

Chapter 4: Problem, Meet Solution

- 45 Problems That Prevent You from Using Your iMac
- 47 Replacing the Batteries
- 49 Using Apple Hardware Test
- 50 Problems with Your Internet Connection
- 52 Problems with AirPort Wireless Communication
- 53 Keeping Your Software Up to Date
- 54 When an Application Doesn't Respond
- 54 Reinstalling the Software That Came with Your iMac
- 56 Other Problems
- 57 Learning More, Service, and Support
- 60 Locating Your Product Serial Number

Chapter 5: Last, but Not Least

- 62 Important Safety Information
- 66 Important Handling Information
- 67 Cleaning Your iMac
- 68 Understanding Ergonomics
- 70 Apple and the Environment

Looking for Something?

- 76 Index

1

Ready, Set Up, Go

www.apple.com/imac

Mac Help  Migration Assistant

Your iMac is designed so that you can easily set it up and start using it right away. If you've never used an iMac or are new to Mac computers, read this chapter for instructions about getting started.

Important: Read all the installation instructions in this chapter and the safety information starting on page 62 before you plug your iMac into a power outlet.

If you are an experienced user, you may already know enough to get started. Make sure you look over the information in Chapter 2, "Life with Your iMac," to find out about the new features of your iMac.

Answers to many questions can be found on your iMac in Mac Help. For information about Mac Help, see "Getting Answers" on page 32.

Remove any protective film from the outside of your iMac before you set it up.

What's in the Box

Your iMac comes with an Apple Wireless Keyboard, a wireless Apple Magic Mouse, and an AC power cord. If you ordered an Apple Remote, it's also in the box.



Apple Wireless Keyboard



Apple Magic Mouse

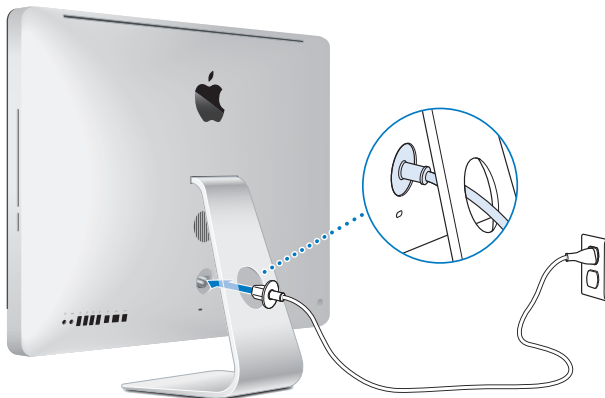


AC power cord

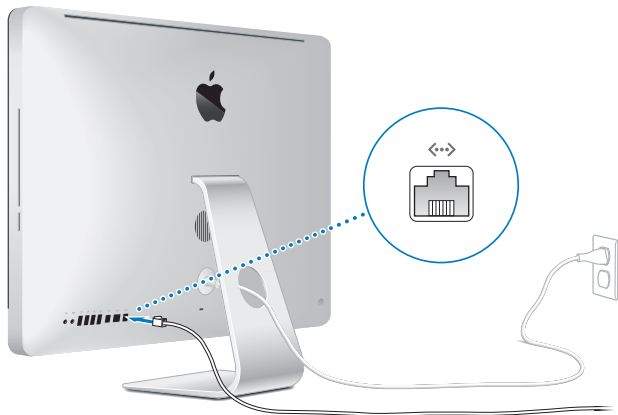
Setting Up Your iMac

Follow these steps to set up your iMac. Wait until Step 4 to turn on your iMac.

Step 1: Pass the power cord through the hole in the stand, plug it into the power port on the back of your iMac, and then plug the cord into a power outlet.



Step 2: To access the Internet or a network, connect one end of an Ethernet cable to the Ethernet port on your iMac. Connect the other end to a cable modem, a DSL modem, or a network.



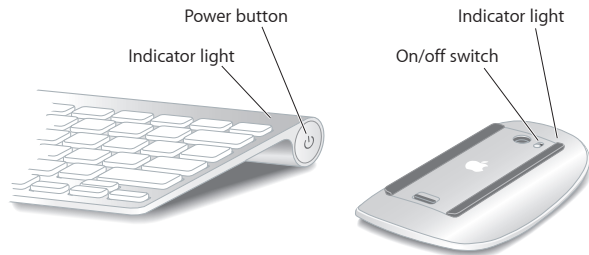
Your iMac comes with AirPort Extreme technology for wireless networking. For information about setting up a wireless connection, choose Help > Mac Help and search for “AirPort.”

To use a dial-up connection, you need an external USB modem. Plug the modem into a USB port on your iMac, and then use a phone cord to connect the modem to a phone jack.

Step 3: Turn on your wireless keyboard and mouse.

Press the power button on the right side of your Apple Wireless Keyboard and slide the switch on the bottom of your Apple Magic Mouse to turn them on.

Your wireless keyboard and mouse come with AA batteries installed, and they're already paired with your iMac. Pairing allows them to communicate wirelessly with your iMac.



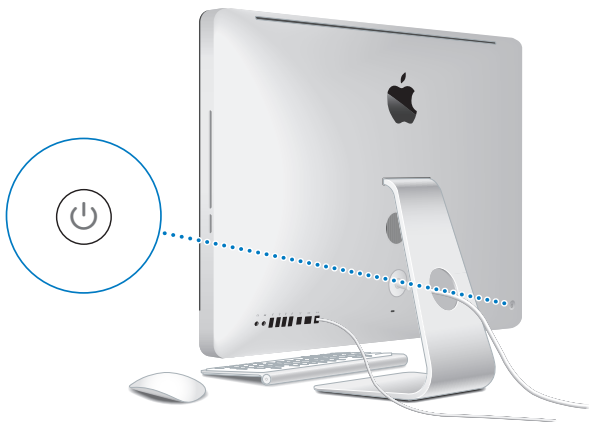
When you first turn on your keyboard or mouse, the indicator light glows steadily for 5 seconds, indicating the batteries are good. If your keyboard or mouse doesn't turn on, make sure batteries are installed properly and charged (see page 47).

The indicator light blinks until you turn on your iMac and a connection is established.

Note: If you purchased a USB keyboard or a USB mouse, connect the cable to a USB (⏏) port on the back of your iMac.

Step 4: Press the power (⏻) button on the back to turn on your iMac.

You hear a tone when you turn on your iMac. Click your mouse to establish a connection with your iMac.



Important: If your keyboard and mouse aren't paired, follow the onscreen instructions to pair them with your iMac. You may have to click the mouse once to establish a connection. For more information about pairing, see page 27.

Step 5: Use Setup Assistant to configure your iMac.

The first time you turn on your iMac, Setup Assistant starts. Setup Assistant helps you enter your Internet and email information and set up a user account on your iMac. If you already have a Mac, Setup Assistant can help you automatically transfer files, applications, and other information from your previous Mac to your new iMac.

If you don't intend to keep or use your other Mac, it's best to deauthorize it from playing music, videos, or audiobooks that you've purchased from the iTunes Store. Deauthorizing a computer prevents any songs, videos, or audiobooks you've purchased from being played by someone else and frees up another authorization for use. For information about deauthorizing, choose iTunes Help from the Help menu in iTunes.

If you don't use Setup Assistant to transfer information when you first start up, you can do it later using Migration Assistant. Go to the Applications folder, open Utilities, and double-click Migration Assistant.

After you're set up, check for updated software. Choose Apple (🍏) > Software Update from the menu bar and follow the onscreen instructions.

Step 6: Customize your desktop and set your preferences.

You can easily make your desktop look the way you want using System Preferences, your command center for most settings on your iMac. Choose Apple (🍏) > System Preferences from the menu bar, or click the System Preferences icon in the Dock. For more information, open Mac Help and search for "System Preferences" or for the specific preference you want to change.

Putting Your iMac to Sleep or Shutting It Down

When you finish working with your iMac, you can put it to sleep or shut it down.

Putting Your iMac to Sleep

If you'll be away from your iMac for less than a few days, put it to sleep. When your iMac is in sleep, its screen is dark. You can quickly wake your iMac and bypass the startup process.

To put your iMac to sleep, do one of the following:

- Choose Apple () > Sleep from the menu bar.
- Press the power (⏻) button on the back of your iMac.
- Choose Apple () > System Preferences, click Energy Saver, and set a sleep timer.
- Hold down the Play/Pause (⏮) button on the optional Apple Remote for 3 seconds.

To wake your iMac from sleep, do one of the following:

- Press any key on the keyboard.
- Click the mouse.
- Press the power (⏻) button on the back of your iMac.
- Press any button on the optional Apple Remote.

When your iMac wakes from sleep, your applications, documents, and computer settings are exactly as you left them.

Shutting Down Your iMac

If you won't be using your iMac for more than a few days, shut it down. Choose Apple () > Shut Down. To turn your iMac on again, press the power (⏻) button.

NOTICE: Shut down your iMac before moving it. Moving your iMac while the hard disk is spinning can damage the hard disk, causing loss of data or an inability to start up from the hard disk.

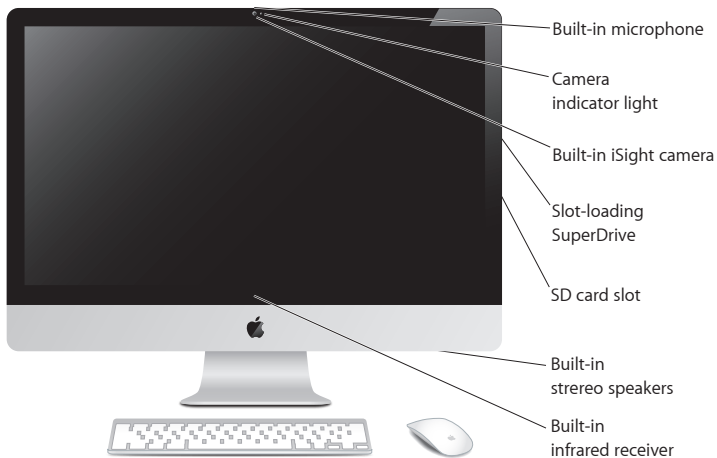
2

Life with Your iMac

www.apple.com/macosx

Mac Help  iLife

Basic Features of Your iMac



Built-in microphone

Capture sounds on your iMac, or talk with friends live over the Internet using the included iChat application.

Camera indicator light

The camera indicator light glows when the iSight camera is operating.

Built-in iSight camera

Videoconference with friends and family over the Internet using iChat, snap pictures with Photo Booth, or capture video with iMovie.

Slot-loading SuperDrive

The slot-loading SuperDrive reads and writes standard-size CDs and DVDs.

SD card slot

Easily transfer photos, videos, and data to and from your iMac with an SD card.

Built-in stereo speakers

Listen to music, movies, games, and other multimedia files.

Built-in infrared (IR) receiver

Use an Apple Remote (available separately) with the IR receiver to control Front Row and Keynote on your iMac from up to 30 feet (9.1 meters) away.

Ports on Your iMac

↔ Ethernet port
(10/100/1000
Base-T)

□ Mini DisplayPort

⚡ USB 2.0 ports (4)

🔊 Audio in/optical
digital audio
in port

🎧 Headphone out/
optical digital
audio out port

🔥 FireWire 800 port



**Ethernet port (10/100/1000Base-T)**

Connect to a high-speed 10/100/1000Base-T Ethernet network, connect a DSL or cable modem, or connect to another computer and transfer files. The Ethernet port automatically detects other Ethernet devices.

**Mini DisplayPort**

Output port with support for DVI, VGA, and dual-link DVI. The 27-inch model also supports input from external DisplayPort sources. Required cables and adapters are available separately.

**Four high-speed USB (Universal Serial Bus) 2.0 ports**

Connect an iPod, iPhone, iPad, mouse, keyboard, printer, disk drive, digital camera, joystick, external USB modem, and more. You can also connect USB 1.1 devices.

**Audio in/optical digital audio in port**

Connect an external powered microphone or digital audio equipment. This port is also a S/PDIF stereo 3.5 mini-phonon jack.

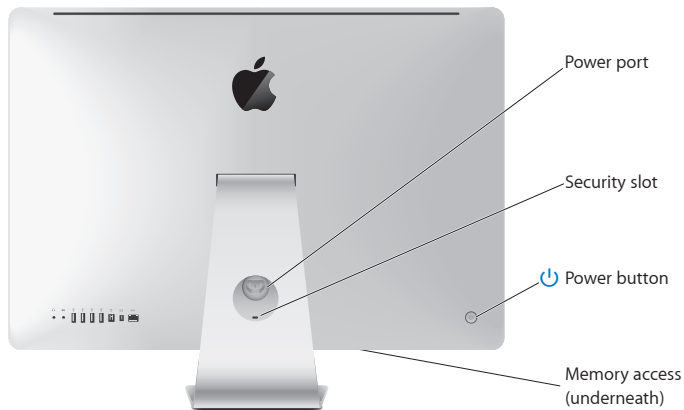
**Headphone out/optical digital audio out port**

Connect headphones, external powered speakers, or digital audio equipment. This port is also a S/PDIF stereo 3.5 mini-phonon jack.

**FireWire 800 port**

Connect high-speed external devices, such as digital video cameras and storage devices. The port provides up to 7 watts of power.

Other Components of Your iMac



Power port

Connect the power cord to your iMac.

Security slot

Attach a lock and cable to discourage theft (available separately).

**Power button**

Press to turn on your iMac or put it to sleep. Hold down to restart your iMac during troubleshooting.

Memory access

Your iMac comes with at least 4 GB of memory installed as two 2 GB memory modules.

**AirPort Extreme wireless technology (inside)**

Connect to a wireless network using built-in AirPort Extreme technology.

**Bluetooth® 2.1+EDR wireless technology (inside)**

Connect wireless devices, such as the Apple Wireless Keyboard and Apple Magic Mouse, Bluetooth mobile phones, PDAs, and printers.

Features of the Apple Wireless Keyboard and Magic Mouse



Apple Magic Mouse

Features a laser tracking engine, Bluetooth wireless technology, and a seamless top-shell that uses Multi-Touch technology to support multiple buttons, 360° scrolling, screen zoom, and swipe control of your iMac. Use Mouse preferences to adjust tracking, clicking, and scrolling speed, or to add secondary button support (see page 29).

Apple Wireless Keyboard

Combines wireless freedom with integrated function keys that work with your applications.



Media Eject key

Hold down this key to eject a disc. You can also eject a disk by dragging its desktop icon to the Trash.



Dashboard key (F4)

Open Dashboard to access your widgets.



Exposé key (F3)

Open Exposé to see all of the open windows on your desktop at once.



Brightness keys (F1, F2)

Increase (☀) or decrease (☾) the brightness of the screen.



Media keys (F7, F8, F9)

Rewind (◀◀), play or pause (▶▶), or fast-forward (▶▶▶) a song, movie, or slideshow.



Volume keys (F10, F11, F12)

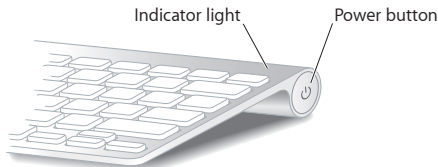
Mute (🔇), decrease (🔉), or increase (🔊) the volume of sound coming from the speakers or headphone port on your iMac.

Using the Apple Wireless Keyboard

Your wireless keyboard, which comes with two AA batteries installed, is already paired with your iMac. Pairing means your keyboard and iMac are connected wirelessly and can communicate with each other.

About the Indicator Light

The LED on your wireless keyboard functions as a battery indicator and a status light. When you first turn on your keyboard, the light glows steadily for 5 seconds, indicating the batteries are good, and then turns off. If you press the power (⏻) button on your wireless keyboard and the indicator light doesn't glow, you may need to replace the batteries. See "Replacing the Batteries" on page 47.



Pairing Your Wireless Keyboard with Your iMac

If your wireless keyboard isn't paired with your iMac, the indicator light begins to blink, indicating your keyboard is in discovery mode and ready to pair with your iMac.

To pair your wireless keyboard:

- 1 Press the power (⏻) button to turn on your wireless keyboard.
- 2 Choose Apple (🍏) > System Preferences, and then click Keyboard.
- 3 Click "Set Up Bluetooth Keyboard ..." in the lower-right corner.
- 4 Select your wireless keyboard, and then follow the onscreen instructions.

If you don't pair your keyboard with your iMac within 3 minutes, the indicator light and keyboard turn off to preserve battery life. Press the power (⏻) button to turn your keyboard on again, allowing you to pair it with your iMac. Once you successfully pair your keyboard with your iMac, the indicator light glows steadily for 3 seconds, and then turns off.

Using Your Keyboard

Customize your keyboard using Keyboard preferences. You can change the modifier keys, assign keyboard shortcuts to menu commands in a Mac OS X application or in the Finder, and more.

To customize your keyboard:

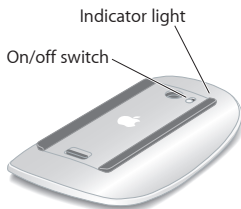
- 1 Choose Apple (🍏) > System Preferences.
- 2 Click Keyboard, and then click Keyboard or Keyboard Shortcuts.

Using the Apple Magic Mouse

Your wireless Apple Magic Mouse, which comes with two AA batteries installed, is already paired with your iMac. Pairing means your Apple Magic Mouse and iMac are connected wirelessly and can communicate with each other.

About the Indicator Light

When you first turn on your Apple Magic Mouse, the light glows steadily for 5 seconds, indicating the batteries are good. If you turn your mouse on and the indicator light doesn't glow, you may need to replace the batteries. See "Replacing the Batteries" on page 47.



Pairing Your Apple Magic Mouse with Your iMac

If your Apple Magic Mouse isn't paired with your iMac, the indicator light begins to blink, indicating your mouse is in discovery mode and ready to pair with your iMac.

To pair your mouse:

- 1 Slide the on/off switch on the bottom of your mouse to turn it on.
- 2 Choose Apple (🍏) > System Preferences, and then click Mouse.
- 3 Click "Set Up Bluetooth Mouse ..." in the lower-right corner.
- 4 Select your wireless mouse, and then follow the onscreen instructions.

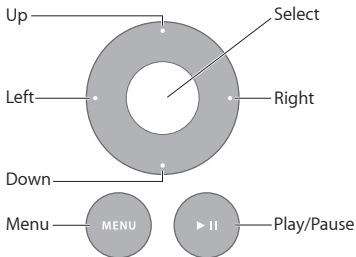
If you don't pair your mouse with your iMac within 3 minutes, the indicator light and mouse turn off to preserve battery life. Slide the on/off switch to turn your mouse on again, allowing you to pair it with your iMac. Once you successfully pair your mouse with your iMac, the indicator light glows steadily.

Using Your Apple Magic Mouse

To learn about the Multi-Touch gestures you can use with your Apple Magic Mouse or to change the way it works, use Mouse preferences. Choose Apple (🍏) > System Preferences, and then click Mouse.

Using the Apple Remote

If your iMac came with an Apple Remote, you can use it with Apple products that have a built-in infrared (IR) receiver. Control and play a DVD movie or music from your iTunes library, watch photo slideshows and movie trailers, and more.



To use your remote:

- 1 Press Play/Pause to play or pause a song, slideshow, or movie.
- 2 Press Right or Left to skip to the next or previous song in your iTunes library, or the next or previous chapter on a DVD.
- 3 Hold down Right or Left to fast-forward or rewind a song or movie.
- 4 Press Up or Down to adjust the volume.

Pairing Your Apple Remote

Pair your Apple Remote with your iMac or another Apple product. After you pair the iMac or Apple product, it's controlled by only the paired remote.

To pair your remote:

- 1 Move within 3 to 4 inches (8 to 10 cm) of your iMac or Apple product.
- 2 Point the remote at the IR receiver on the front of your iMac or Apple product.
- 3 Hold down Right and Menu for 5 seconds.

When you've paired your remote, a chainlink symbol appears onscreen.

To unpair your remote on an iMac:

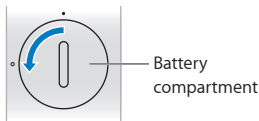
- 1 Choose Apple (🍏) > System Preferences from the menu bar.
- 2 Click Security, and then click Unpair.

For Apple TV or other Apple products, hold down Menu and Left to unpair.

Replacing the Battery

To replace the battery:

- 1 Use a coin to remove the battery cover.
- 2 Insert a CR2032 battery, positive (+) side up.
- 3 Replace the cover and use a coin to tighten it.



Getting Answers

Much more information about using your iMac is available in Mac Help and on the Internet at www.apple.com/support/imac.

To open Mac Help:

- 1 Click the Finder icon in the Dock (the bar of icons along the edge of the screen).
- 2 Choose Help > Mac Help (click the Help menu in the menu bar and choose Mac Help).
- 3 Click in the search field, type a question, and press Return on your keyboard.

More Information

For more information about using your iMac, see the following:

To learn about	See
Installing memory	Chapter 3, "Boost Your Memory" on page 35.
Troubleshooting your iMac if you have a problem	Chapter 4, "Problem, Meet Solution" on page 43.
Finding service and support for your iMac	"Learning More, Service, and Support" on page 57. Or see the Apple Support website at www.apple.com/support .
Using Mac OS X	The Mac OS X website at www.apple.com/macosex . Or search for "Mac OS X" in Mac Help.
Moving from a PC to a Mac	"Why you'll love a Mac" at www.apple.com/getamac/whymac .
Using iLife applications	The iLife website at www.apple.com/ilife . Or open an iLife application, open Help for the application, and then type a question in the search field.
Changing System Preferences	System Preferences by choosing Apple () > System Preferences. Or search for "system preferences" in Mac Help.

To learn about	See
Using the iSight camera	Mac Help and search for "iSight."
Using your keyboard or mouse	System Preferences and choose Keyboard or Mouse. Or open Mac Help and search for "keyboard" or "mouse."
Using AirPort Extreme wireless technology	The AirPort Support page at www.apple.com/support/airport . Or open Mac Help and search for "AirPort."
Using Bluetooth wireless technology	Open Mac Help and search for "Bluetooth." Or go to the Bluetooth Support page at www.apple.com/support/bluetooth .
Connecting a printer	Mac Help and search for "printing."
FireWire and USB connections	Mac Help and search for "FireWire" or "USB."
Connecting to the Internet	Mac Help and search for "Internet."
External display	Mac Help and search for "display port" or "target display mode."
Apple Remote	Mac Help and search for "remote."
Front Row	Mac Help and search for "Front Row."
Using the SuperDrive	Mac Help and search for "optical drive."
Specifications	The Specifications page at www.apple.com/support/specs for standard technical specifications. Or open System Profiler by choosing Apple () > About This Mac from the menu bar and then clicking More Info.
Apple news, free downloads, and online catalogs of software and hardware	The Apple website at www.apple.com .
Instructions, technical support, and Apple product manuals	The Apple Support website at www.apple.com/support .

3

Boost Your Memory

www.apple.com/store

Mac Help  RAM

Your iMac comes with at least 4 gigabytes (GB) of Double Data Rate 3 (DDR3) Dynamic Random Access memory (DRAM) installed as two 2 GB memory modules. You can replace or install additional 2 GB or 4 GB memory modules for up to a maximum of 16 GB. Memory modules must meet the following specifications:

- Small Outline Dual Inline Memory Module (SO-DIMM) format
- 1333 MHz, PC3-10600, DDR3 compliant (also referred to as DDR3 1333)
- Unbuffered and unregistered

WARNING: Apple recommends that you have an Apple-certified technician install memory. Consult the service and support information that came with your iMac for information about how to contact Apple for service. If you attempt to install memory and damage your equipment, that damage isn't covered by the limited warranty on your iMac.

Installing Memory

Your iMac has four memory slots. Two are filled with at least a 2 GB memory module. You can install additional memory in the free slots or replace the memory in the filled slots with 2 GB or 4 GB memory modules, for up to 16 GB of memory.

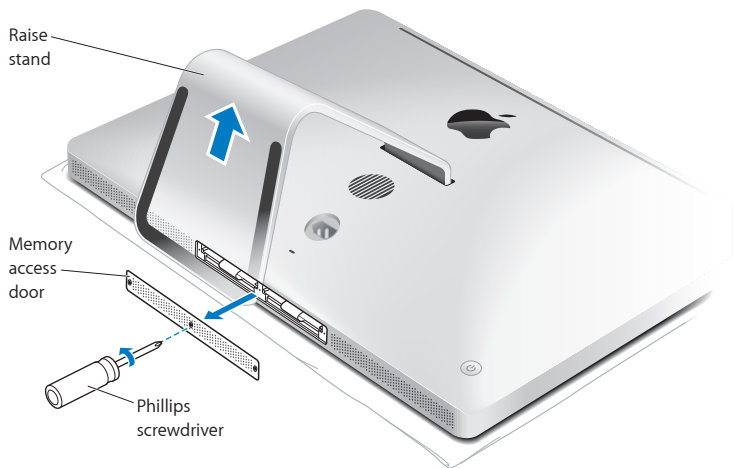
You can purchase additional Apple memory from an Apple Authorized Reseller, an Apple Retail Store, or the Apple Online Store at www.apple.com/store.

WARNING: Always shut down your iMac and remove the power cord before installing memory. Do not attempt to install memory while your iMac is plugged in.

To install memory:

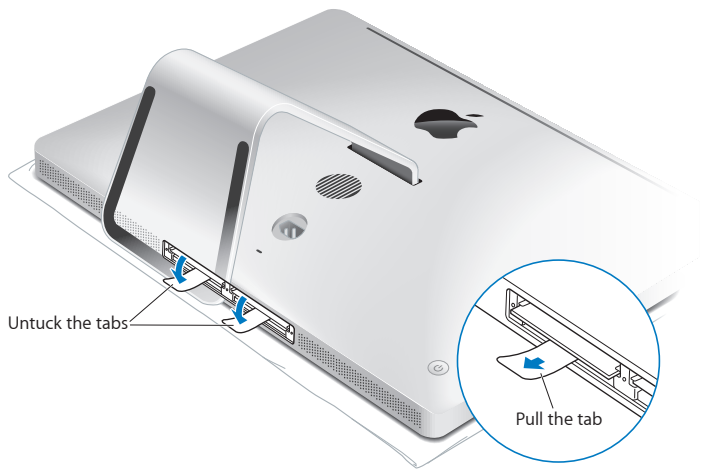
- 1 Turn off your iMac by choosing Apple (🍏) > Shut Down.
- 2 Disconnect all cables and the power cord from your iMac.
- 3 Place a soft, clean towel or cloth on your work surface. Hold the sides of your iMac and lay it down so that the screen rests on the surface and the bottom faces you.

- 4 Raise the stand and use a Phillips #2 screwdriver to loosen the three captive screws on the memory access door. Turn them counterclockwise.

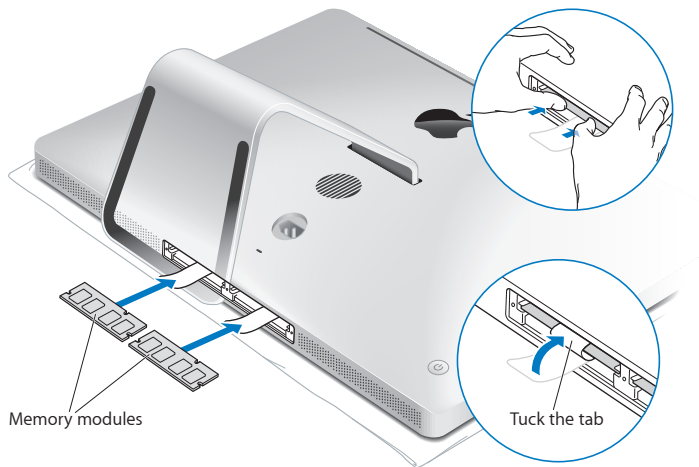


- 5 Remove the memory access door and set it aside.

- 6 Untuck the tabs in the memory compartment.
- 7 To replace memory modules, pull the tab to eject the installed memory module. Remove the memory modules you want to replace.

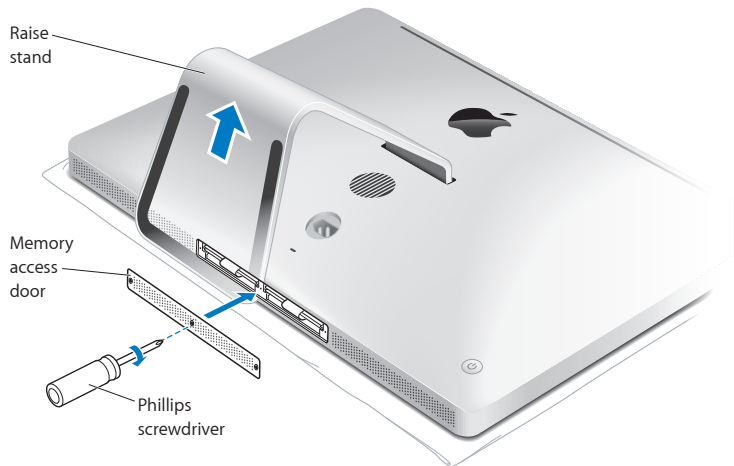


- 8 Insert the new memory modules in the slots with the notches facing right, as shown in the illustration.
 - If you install additional memory modules, insert them in the open slots.
 - If you replace the installed memory modules, insert a new memory module in each of the slots furthest from the display.
- 9 Press each memory module firmly and evenly into its slot. You'll hear a slight click when the memory module is seated correctly.
- 10 Tuck the tabs into the memory compartment.



- 11 Replace the memory access door and tighten the three captive screws with a Phillips #2 screwdriver.

WARNING: Remember to replace the memory access door after you install memory. Your iMac won't function properly without the memory access door.



- 12 Hold your iMac by its sides and return it to a standing position. Then reconnect the cables and power cord.
- 13 Press the power (⏻) button on the back of your iMac to turn it on.

Making Sure Your iMac Recognizes the New Memory

After installing memory, make sure your iMac recognizes the new memory.

To check the memory installed in your iMac:

- 1 Start up your iMac.
- 2 When you see the Mac OS X desktop, choose Apple (🍏) > About This Mac.
You'll see the total amount of memory installed in your iMac. For a detailed view of the amount of memory installed, open System Profiler by clicking More Info.

If the memory you installed doesn't meet specifications (see page 36), your iMac will sound three tones every five seconds. If this happens, shut down your iMac and check the installation instructions again to make sure that the memory is compatible with your iMac and that it's installed correctly. If you still have problems, remove the memory and consult the support information that came with the memory or contact the vendor who provided the memory.

4

Problem, Meet Solution

www.apple.com/support

Mac Help  help

Occasionally you may have problems while working with your iMac. Read on for troubleshooting tips to try when you have a problem. You can also find more troubleshooting information in Mac Help or on the iMac Service & Support website at www.apple.com/support/imac.

If you experience a problem working with your iMac, there's usually a simple and quick solution. If you encounter a problem, try to make a note of what you did before the problem occurred. This can help you narrow down the possible causes of the problem and then find the answers you need. Things to note:

- The applications you were using when the problem occurred. Problems that occur only with a specific application may indicate that the application isn't compatible with the version of Mac OS X installed on your iMac.
- Any software that you recently installed.
- Any new hardware (such as additional memory or a peripheral) that you connected or installed.

WARNING: Do not attempt to open your iMac, except to install memory. If your iMac needs service, see "Learning More, Service, and Support" on page 57 for information about how to contact Apple or an Apple Authorized Service Provider for service. Your iMac doesn't have any user-serviceable parts, except the memory.

Problems That Prevent You from Using Your iMac

If your iMac won't respond or the pointer won't move

- Make sure your Apple Wireless Keyboard or Apple Magic Mouse are turned on and the batteries are charged. (See “Replacing the Batteries” on page 47)
If you're using a USB keyboard or mouse, make sure they're connected. Unplug and then plug in the connectors and make sure they are secure.
- Try to force problem applications to quit. Hold down the Option and Command (⌘) keys and press the Esc key. If a dialog appears, select the application and click Force Quit. Then save your work in any open applications and restart your iMac to be sure the problem is entirely cleared up.
- If you're unable to force the application to quit, hold down the power (⏻) button on the back of your iMac for five seconds to shut down the computer. Unplug the power cord from your iMac. Then plug the power cord back in and press the power (⏻) button on your iMac to turn it on.

If the problem reoccurs when you use a particular application, check with the application's manufacturer to see if the application is compatible with your iMac.

For support and contact information about the software that came with your iMac, go to www.apple.com/guide or to the manufacturer's website.

If the problem occurs frequently, try reinstalling your system software (see “Reinstalling the Software That Came with Your iMac” on page 54).

If your iMac freezes during startup or you see a flashing question mark

- Wait a few seconds. If your iMac doesn't start up after a delay, shut down your iMac by pressing and holding the power (⏻) button for about 5 seconds, until it shuts down. Then hold down the Option key and press the power (⏻) button again to start up your iMac. Keep holding down the Option key until your iMac starts up, then click the arrow under the icon of the startup disk you want to use.
- After your iMac starts up, open System Preferences and click Startup Disk. Select a local Mac OS X System folder.
- If the problem occurs frequently, you may need to reinstall your system software (see "Reinstalling the Software That Came with Your iMac" on page 54).

If your iMac won't turn on or start up

- Make sure the power cord is plugged into your iMac and a functioning power outlet.
- Press the power (⏻) button and immediately hold down the Command (⌘), Option, P, and R keys until you hear the startup sound a second time. This resets the parameter RAM (PRAM).
- If you recently installed memory, and your iMac sounds tones every five seconds, make sure that the memory is correctly installed and that it is compatible with your iMac. Check whether removing the memory you installed allows your iMac to start up (see page 42).
- Unplug the power cord and wait at least 30 seconds. Plug the power cord in again and press the power (⏻) button to start up your iMac.
- If you still can't start up your iMac, see "Learning More, Service, and Support" on page 57 for information about contacting Apple for service.

Replacing the Batteries

Your Apple Wireless Keyboard and Apple Magic Mouse each come with two AA batteries installed. You can replace them with alkaline, lithium, or rechargeable AA batteries.

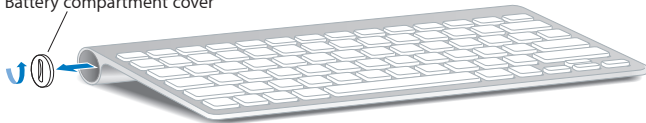
Keep the battery compartment cover and batteries out of the reach of small children.

WARNING: When you replace the batteries, replace them all at the same time. Don't mix old batteries with new batteries or mix battery types (for example, don't mix alkaline and lithium batteries). Don't open or puncture the batteries, install them backwards, or expose them to fire, high temperatures, or water. Keep batteries out of the reach of children.

To replace the batteries in the wireless keyboard:

- 1 Press the power (⏻) button to turn off your keyboard.
- 2 Use a coin to remove the battery compartment cover.

Battery compartment cover



- Slide two AA batteries into the battery compartment, as shown below.

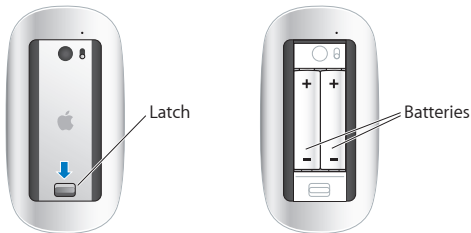


- Replace the battery compartment cover.

To check the battery status, press the power (⏻) button. If the indicator light doesn't glow, you may need to change the batteries. You can check the battery level in Keyboard preferences. Choose Apple (🍏) > System Preferences and click Keyboard. The battery level is in the lower-left corner.

To replace the batteries in the Apple Magic Mouse:

- Slide the on/off switch on the bottom of your mouse to turn it off.
- Slide the latch down and remove the battery cover.



- 3 Insert the batteries with the positive (+) ends facing up, as shown above.
- 4 Replace the cover and turn on your mouse.

You may have to click your Apple Magic Mouse once to reconnect it to your iMac.

To check the battery status, slide the on/off switch to turn on the mouse. If the indicator light doesn't glow, you may need to change the batteries. You can check the battery level in Mouse Preferences. Choose Apple (🍏) > System Preferences and click Mouse. The battery level is shown in the lower-left corner.

Using Apple Hardware Test

If you suspect a problem with your iMac hardware, use the Apple Hardware Test application to help determine if there's a problem with one of the computer's components, such as the memory or processor.

To use Apple Hardware Test:

- 1 Disconnect all external devices from your iMac, except a USB keyboard and mouse, if you use them. If you have an Ethernet cable connected, disconnect it.
- 2 Restart your iMac while holding down the D key.
- 3 When the Apple Hardware Test language chooser screen appears, select the language you want to use.
- 4 Press the Return key or click the right arrow button.
- 5 When the Apple Hardware Test main screen appears (after about 45 seconds), follow the onscreen instructions.

- 6 If Apple Hardware Test detects a problem, it displays an error code. Make a note of the error code before pursuing support options. If Apple Hardware Test doesn't detect a hardware failure, the problem may be software-related.

If this procedure doesn't work, you can insert the *Applications Install DVD* that came with your iMac to use Apple Hardware Test. For more information, see the Apple Hardware Test Read Me file on the *Applications Install DVD*.

Problems with Your Internet Connection

Your iMac has the Network Setup Assistant application to help walk you through setting up an Internet connection. Open System Preferences and click Network. Click the "Assist me" button to open Network Setup Assistant.

If you have trouble with your Internet connection, you can try the steps in this section for your type of connection or you can use Network Diagnostics.

To use Network Diagnostics:

- 1 Choose Apple (🍏) > System Preferences.
- 2 Click Network and then click "Assist me."
- 3 Click Diagnostics to open Network Diagnostics.
- 4 Follow the onscreen instructions.

If Network Diagnostics can't resolve the problem, there may be a problem with the Internet service provider (ISP) you are trying to connect to, with an external device you are using to connect to your ISP, or with the server you are trying to access. You can try the steps in the following sections.

Cable Modem, DSL Modem, and LAN Internet Connections

Make sure all modem cables are firmly plugged in, including the modem power cord, the cable from the modem to your iMac, and the cable from the modem to the wall jack. Also check the cables and power supplies to any Ethernet hubs or routers.

Turn the modem off and on and reset the modem hardware

Turn off your DSL or cable modem for a few minutes, and then turn it back on. Some ISPs recommend that you unplug the modem's power cord. If your modem has a reset button, you can press it either before or after you turn the power off and on.

Important: Instructions that refer to modems do not apply to LAN users. LAN users might have hubs, switches, routers, or connection pods that cable and DSL modem users do not have. LAN users should contact their network administrator rather than an ISP.

PPPoE Connections

If you are unable to connect to your ISP using PPPoE (Point to Point Protocol over Ethernet), make sure you have entered the correct information in Network preferences.

To enter PPPoE settings:

- 1 Choose Apple (🍏) > System Preferences.
- 2 Click Network.
- 3 Click Add (+) at the bottom of the network connection services list, and choose PPPoE from the Interface pop-up menu.
- 4 Choose an interface for the PPPoE service from the Ethernet pop-up menu. Choose Ethernet if you are connecting to a wired network, or AirPort if you are connecting to a wireless network.

- 5 Enter the information you received from your service provider, such as the account name, password, and PPPoE service name (if your service provider requires it).
- 6 Click Apply to make the settings active.

Network Connections

Make sure the Ethernet cable is plugged into your iMac and into the network. Check the cables and power supplies to your Ethernet hubs and routers.

If you have two or more computers sharing an Internet connection, be sure that your network is set up properly. You need to know whether your ISP provides only one IP address or multiple IP addresses, one for each computer.

If only one IP address is provided, then you must have a router capable of sharing the connection, also known as network address translation (NAT) or “IP masquerading.” For setup information, check the documentation provided with your router or ask the person who set up your network. The AirPort base station can be used to share one IP address among multiple computers. For information about using an AirPort base station, check Mac Help or visit the AirPort Extreme website at www.apple.com/support/airport.

If you can't resolve the issue using these steps, contact your ISP or network administrator.

Problems with AirPort Wireless Communication

If you have trouble using AirPort wireless communication:

- Make sure the computer or network you are trying to connect to is running and has a wireless access point.

- Make sure you have properly configured the software according to the instructions that came with your base station or access point.
- Make sure you are within antenna range of the other computer or the network's access point. Nearby electronic devices or metal structures can interfere with wireless communication and reduce this range. Repositioning or rotating the computer might improve reception.
- Check the AirPort (📶) status menu in the menu bar. Up to four bars appear, indicating signal strength. If the signal strength is weak, try changing your location.
- See AirPort Help (choose Help > Mac Help, and then choose Library > AirPort Help from the menu bar). Also see the instructions that came with the wireless device for more information.

Keeping Your Software Up to Date

You can connect to the Internet and automatically download and install the latest free software versions, drivers, and other enhancements from Apple.

When you're connected to the Internet, Software Update checks to see if any updates are available for your computer. You can set your iMac to check for updates periodically, and then you can download and install updated software.

To check for updated software:

- 1 Choose Apple (🍏) > System Preferences.
- 2 Click the Software Update icon and follow the onscreen instructions.
 - For more information, search for "Software Update" in Mac Help.
 - For the latest information about Mac OS X, go to www.apple.com/macosx.

When an Application Doesn't Respond

On rare occasion, an application may “freeze.” Mac OS X provides a way to quit an application that's not responding, without restarting your iMac. Quitting a frozen application may allow you to save your work in other open applications.

To force an application to quit:

- 1 Press Command (⌘)-Option-Esc or choose Apple () > Force Quit. The Force Quit Applications dialog appears with the application selected.
- 2 Click Force Quit.
The application quits, leaving all other applications open.

Reinstalling the Software That Came with Your iMac

Use the software installation discs that came with your iMac to reinstall Mac OS X and any applications that came with your computer.

Important: Apple recommends that you back up the data on your hard disk before restoring software. Apple is not responsible for any lost data.

Installing Mac OS X

To install Mac OS X:

- 1 Back up your essential files.
- 2 Insert the *Mac OS X Install DVD* that came with your iMac.

3 Double-click Install Mac OS X.

4 Follow the onscreen instructions.

In the pane where you're prompted to select a disk, select your current Mac OS X hard disk (in most cases, it's the only one available).

5 To control which parts of Mac OS X are installed, click Customize, and then select the parts you want to install. Click the disclosure triangle next to Applications to select the checkboxes for any applications you want to install.

6 When the installation is complete, click Restart to restart your iMac.

7 Follow the prompts in Setup Assistant to set up your new user account.

If you want to erase and install, make sure you back up your user data before you start. Use Disk Utility on your *Mac OS X Install DVD* to erase your hard drive. For information about Disk Utility and its options, see Mac Help, or open Disk Utility (in /Applications/Utilities/) and choose Help > Disk Utility Help. You can also review detailed instructions in the following Kbase article: <http://support.apple.com/kb/HT3910>?

Installing iLife Applications

You can reinstall the iLife applications that came with your iMac if you accidentally delete them, or after you perform an erase and install.

To install the iLife applications that came with your iMac:

1 Insert the *Applications Install DVD* that came with your iMac.

2 Follow the onscreen instructions. In the Installation Type pane, click Customize.

3 When the installation is complete, click Close.

Other Problems

For a problem with software from a manufacturer other than Apple, contact the manufacturer. Software manufacturers often provide software updates on their website.

You can check for and install the latest Apple software using the Software Update pane of System Preferences. Your iMac is set to check automatically once a week, but you can set it to check daily or monthly. You can also check for updates manually. For more information, choose Help > Mac Help and search for “software update.”

If you have trouble inserting a disc

- Using a continuous motion, push the disc into the drive until your fingers touch the edge of your iMac.
- Use only a standard-size disc.

If you have trouble ejecting a disc

- Quit any applications that may be using the disc, and then press the Media Eject (⏏) key on your keyboard.
- Open a Finder window and click the eject icon next to the disc icon in the sidebar, or drag the disc icon from the desktop to the Trash.
- Log out from your user account by choosing Apple (🍏) > Log Out “User” (your account name appears in the menu), and then press the Media Eject (⏏) key on your keyboard.
- Restart your iMac while holding down the mouse button.

If you have trouble scrolling with your mouse

- If you have a mouse with a scroll ball and the scrolling feels rough or the scroll ball isn't scrolling up, down, or side-to-side, hold the mouse upside-down and roll the ball vigorously while cleaning.
- See “Cleaning Your Mouse” on page 68 for more information.

If you have a problem using your iMac or working with Mac OS X

- If the answer to your question isn't in this manual, look in Mac Help for instructions and troubleshooting information. In the Finder, choose Help > Mac Help.
- Check the Apple Support website at www.apple.com/support for the latest troubleshooting information and software updates.

If your date and time settings get lost repeatedly

- You may need to have the internal backup battery replaced. For information about contacting Apple for service, see “Learning More, Service, and Support” below.

Learning More, Service, and Support

Your iMac does not have any user-serviceable parts, except the keyboard, mouse, and memory. If you need service, contact Apple or take your iMac to an Apple Authorized Service Provider. You can find more information about your iMac through online resources, onscreen help, System Profiler, or Apple Hardware Test.

Online Resources

For online service and support information, go to www.apple.com/support. Choose your country from the pop-up menu. You can search the AppleCare Knowledge Base, check for software updates, or get help on Apple's discussion forums.

Onscreen Help

You can often find answers to your questions, as well as instructions and troubleshooting information, in Mac Help. Choose Help > Mac Help.

System Profiler

To get information about your iMac, use System Profiler. It shows you what hardware and software is installed, the serial number and operating system version, how much memory is installed, and more. To open System Profiler, choose Apple (🍏) > About This Mac from the menu bar and then click More Info.

AppleCare Service and Support

Your iMac comes with 90 days of technical support and one year of hardware repair warranty coverage at an Apple Retail Store or an Apple-authorized repair center, such as an Apple Authorized Service Provider. You can extend your coverage by purchasing the AppleCare Protection Plan. For information, visit www.apple.com/support/products or visit the website address for your country listed below.

If you need assistance, AppleCare telephone support representatives can help you with installing and opening applications, and basic troubleshooting. Call the support center number nearest you (the first 90 days are complimentary). Have the purchase date and your iMac serial number ready when you call.

Note: Your 90 days of complimentary telephone support begins on the date of purchase and telephone fees may apply.

Country	Phone	Website
United States	1-800-275-2273	www.apple.com/support
Australia	(61) 1-300-321-456	www.apple.com/au/support
Canada (English) (French)	1-800-263-3394	www.apple.com/ca/support www.apple.com/ca/fr/support
Ireland	(353) 1850 946 191	www.apple.com/ie/support
New Zealand	00800-7666-7666	www.apple.com/nz/support
United Kingdom	(44) 0844 209 0611	www.apple.com/uk/support

Telephone numbers are subject to change, and local and national telephone rates may apply. A complete list is available on the web:

www.apple.com/support/contact/phone_contacts.html

Locating Your Product Serial Number

Use any of these methods to find the serial number of your iMac:

- Choose Apple (🍏) > About This Mac. Click the version number beneath the words “Mac OS X” to cycle through the Mac OS X version number, the build version, and the serial number.
- Click the Finder icon and open /Applications/Utilities/System Profiler. Click Hardware in the Contents pane.
- Look on the bottom of the iMac stand.

5

Last, but Not Least

www.apple.com/environment

Mac Help  ergonomics

For your safety and that of your equipment, follow these rules for handling and cleaning your iMac and for working more comfortably. Keep these instructions handy for reference by you and others.

NOTICE: Incorrect storage or use of your computer may void the manufacturer's warranty.

Important Safety Information

WARNING: Failure to follow these safety instructions could result in fire, electric shock, or other injury or damage.

Proper handling Set up your iMac on a stable work surface. Never push objects into the ventilation openings.

Water and wet locations Keep your iMac away from sources of liquid, such as drinks, washbasins, bathtubs, shower stalls, and so on. Protect your iMac from dampness or wet weather, such as rain, snow, and fog.

Power The only way to disconnect power completely is to unplug the power cord. Make sure you pull the plug, not the cord. Always unplug the power cord before opening your iMac to install memory.

Unplug the power cord (by pulling the plug, not the cord) and disconnect the ethernet cable or phone cord if any of the following conditions exist:

- You want to add memory
- The power cord or plug becomes frayed or otherwise damaged
- You spill something into the case
- Your iMac is exposed to rain or excess moisture
- Your iMac has been dropped or the case has been damaged
- You suspect that your iMac needs service or repair
- You want to clean the case (use only the recommended procedure described later)

Important: The only way to turn off power completely is to unplug the power cord. Make sure at least one end of the power cord is within easy reach so that you can unplug your iMac when you need to.

WARNING: Your AC cord has a three-wire grounding plug (a plug that has a third, grounding pin). This plug fits only a grounded AC outlet. If you are unable to insert the plug into an outlet because the outlet isn't grounded, contact a licensed electrician to replace the outlet with a properly grounded outlet. Do not defeat the purpose of the grounding plug.

Power specifications:

- *Voltage:* 100 to 240 V AC
- *Current:* 3 A, maximum
- *Frequency:* 50 to 60 Hz

Hearing damage Permanent hearing loss may occur if earbuds or headphones are used at high volume. Set the volume to a safe level. You can adapt over time to a higher volume of sound that may sound normal but can be damaging to your hearing. If you experience ringing in your ears or muffled speech, stop listening and have your hearing checked. The louder the volume, the less time is required before your hearing could be affected. Hearing experts suggest that to protect your hearing:

- Limit the amount of time you use earbuds or headphones at high volume.
- Avoid turning up the volume to block out noisy surroundings.
- Turn the volume down if you can't hear people speaking near you.

High-risk activities This computer system is not intended for use in the operation of nuclear facilities, aircraft navigation or communications systems, air traffic control systems, or for any other uses where the failure of the computer system could lead to death, personal injury, or severe environmental damage.

Laser Information for Optical Disc Drives

WARNING: Making adjustments or performing procedures other than those specified in your equipment's manual may result in hazardous radiation exposure.

The optical disc drive in your iMac contains a laser that is safe in normal use but that may be harmful to your eyes if disassembled. For your safety, have this equipment serviced only by an Apple Authorized Service Provider.

Important: Electrical equipment may be hazardous if misused. Operation of this product, or similar products, must always be supervised by an adult. Do not allow children access to the interior of any electrical product and do not permit them to handle any cables.

WARNING: Never push objects of any kind into this product through the ventilation openings in the case. Doing so may be dangerous and damage your computer.

Do Not Make Repairs Yourself

Your iMac has no user-serviceable parts, except the keyboard, mouse, and memory (see “Installing Memory” on page 37). Do not attempt to open your iMac. If your iMac needs service, contact an Apple Authorized Service Provider or Apple for service. See “Learning More, Service, and Support” on page 57.

If you open your iMac or install items other than memory, you risk damaging your equipment. Such damage isn't covered by the limited warranty on your iMac.

Important Handling Information

NOTICE: Failure to follow these handling instructions could result in damage to your iMac or other property.

Operating environment Operating your iMac outside these ranges may affect performance:

- *Operating temperature:* 50° to 95° F (10° to 35° C)
- *Storage temperature:* -4° to 116° F (-20° to 47° C)
- *Relative humidity:* 5% to 95% (noncondensing)
- *Maximum operating altitude:* 10,000 feet (3048 meters)

Do not operate your iMac in areas with significant amounts of airborne dust, or smoke from cigarettes, cigars, ashtrays, stoves, or fireplaces, or near an ultrasonic humidifier using unfiltered tap water. Tiny airborne particles produced by smoking, cooking, burning, or using an ultrasonic humidifier with unfiltered water may, in rare instances, enter the ventilation openings of your iMac and, under certain conditions, result in a slight haze on the inside surface of the glass panel that covers the iMac display.

Turning on your iMac Never turn on your iMac unless all of its internal and external parts are in place. Operating the computer when parts are missing may be dangerous and may damage your computer.

Carrying your iMac Before you lift or reposition your iMac, shut it down and disconnect all cables and cords connected to it. To lift or move your iMac, hold its sides.

Using connectors and ports Never force a connector into a port. When connecting a device, make sure the port is free of debris, that the connector matches the port, and that you have positioned the connector correctly in relation to the port.

Using the optical drive The SuperDrive in your iMac supports standard 12 cm (4.7 inch) discs. Irregularly shaped discs or discs smaller than 12 cm (4.7 inches) are not supported.

Storing your iMac If you are going to store your iMac for an extended period of time, keep it in a cool location (ideally, 71° F or 22° C).

Cleaning Your iMac

Follow these guidelines when cleaning the outside of your iMac and its components:

- Shut down your iMac and disconnect all cables.
- Use a damp, soft, lint-free cloth to clean the exterior of your iMac. Avoid getting moisture in any openings. Do not spray liquid directly on your iMac.
- Don't use aerosol sprays, solvents, or abrasives.

Cleaning Your iMac Display

Use the cloth that came with your iMac to clean the display.

To clean your iMac display, do the following:

- Shut down your iMac and disconnect all cables.
- Dampen the cloth that came with your iMac—or another clean, soft, lint-free cloth—with water only, and then wipe the screen. Do not spray liquid directly on the screen.

Cleaning Your Mouse

You may need to clean your mouse from time to time to remove dirt and dust that has accumulated. Use a lint-free cloth that's been lightly moistened with water. Don't get moisture in any openings or use aerosol sprays, solvents, or abrasives.

If you ordered an Apple USB mouse with your iMac, hold the mouse upside-down and roll the scroll ball vigorously with the cloth that came with your iMac, or another clean, soft, lint-free cloth, to help dislodge any particles that may interfere with proper scrolling.

Understanding Ergonomics

Here are some tips for setting up a healthy work environment.

Keyboard

When you use the keyboard, your shoulders should be relaxed. Your upper arm and forearm should form an approximate right angle, with your wrist and hand in roughly a straight line.

Change hand positions often to avoid fatigue. Some computer users might develop discomfort in their hands, wrists, or arms after intensive work without breaks. If you begin to develop chronic pain or discomfort in your hands, wrists, or arms, consult a qualified health specialist.

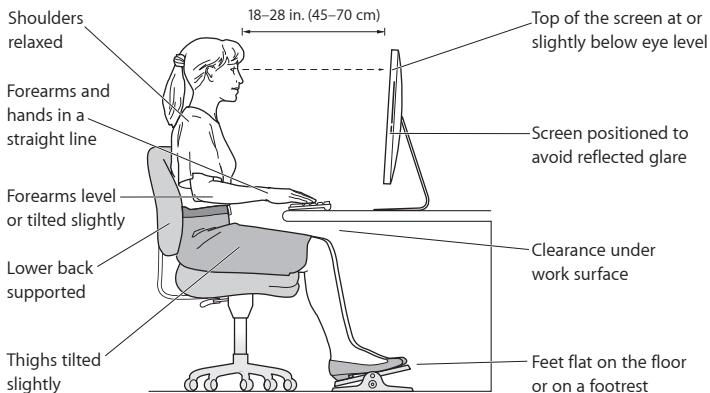
Mouse

Position the mouse at the same height as the keyboard and within a comfortable reach.

Display

Arrange the display so that the top of the screen is slightly below eye level when you're sitting at the keyboard. The best distance from your eyes to the screen is up to you, although most people seem to prefer 18 to 28 inches (45 to 70 cm).

Position the display to minimize glare and reflections on the screen from overhead lights and nearby windows. The stand lets you set the display at the best angle for viewing, helping to reduce or eliminate glare from lighting sources you can't move.



Chair

An adjustable chair that provides firm, comfortable support is best. Adjust the height of the chair so your thighs are horizontal and your feet are flat on the floor. The back of the chair should support your lower back (lumbar region). Follow the manufacturer's instructions for adjusting the backrest to fit your body properly.

You might have to raise your chair so that your forearms and hands are at the proper angle to the keyboard. If this makes it impossible to rest your feet flat on the floor, use a footrest with adjustable height and tilt to make up for any gap between the floor and your feet. Or you can lower the desktop to eliminate the need for a footrest. Another option is to use a desk with a keyboard tray that's lower than the regular work surface.

More information about ergonomics is available on the web:

www.apple.com/about/ergonomics

Apple and the Environment

Apple Inc. recognizes its responsibility to minimize the environmental impact of its operations and products.

More information is available on the web:

www.apple.com/environment

Regulatory Compliance Information

FCC Compliance Statement

This device complies with part 15 of the FCC rules. Operation is subject to the following two conditions: (1) This device may not cause harmful interference, and (2) this device must accept any interference received, including interference that may cause undesired operation. See instructions if interference to radio or television reception is suspected.

L'utilisation de ce dispositif est autorisée seulement aux conditions suivantes: (1) il ne doit pas produire de brouillage et (2) l'utilisateur du dispositif doit être prêt à accepter tout brouillage radioélectrique reçu, même si ce brouillage est susceptible de compromettre le fonctionnement du dispositif.

Radio and Television Interference

This computer equipment generates, uses, and can radiate radio-frequency energy. If it is not installed and used properly—that is, in strict accordance with Apple's instructions—it may cause interference with radio and television reception.

This equipment has been tested and found to comply with the limits for a Class B digital device in accordance with the specifications in Part 15 of FCC rules. These specifications are designed to provide reasonable protection against such interference in a residential installation. However, there is no guarantee that interference will not occur in a particular installation.

You can determine whether your computer system is causing interference by turning it off. If the interference stops, it was probably caused by the computer or one of the peripheral devices.

If your computer system does cause interference to radio or television reception, try to correct the interference by using one or more of the following measures:

- Turn the television or radio antenna until the interference stops.
- Move the computer to one side or the other of the television or radio.
- Move the computer farther away from the television or radio.
- Plug the computer into an outlet that is on a different circuit from the television or radio. (That is, make certain the computer and the television or radio are on circuits controlled by different circuit breakers or fuses.)

If necessary, consult an Apple Authorized Service Provider or Apple. See the service and support information that came with your Apple product. Or consult an experienced radio/television technician for additional suggestions.

Important: Changes or modifications to this product not authorized by Apple Inc. could void the EMC compliance and negate your authority to operate the product.

This product has demonstrated EMC compliance under conditions that included the use of compliant peripheral devices and shielded cables between system components. It is important that you use compliant peripheral devices and shielded cables (including Ethernet network cables) between system components to reduce the possibility of causing interference to radios, television sets, and other electronic devices.

Responsible party (contact for FCC matters only):

Apple Inc. Corporate Compliance
1 Infinite Loop, MS 26-A
Cupertino, CA 95014

Wireless Radio Use

This device is restricted to indoor use when operating in the 5.15 to 5.25 GHz frequency band.

Cet appareil doit être utilisé à l'intérieur.

この製品は、周波数帯域 5.18 ~ 5.32 GHz で動作しているときは、屋内においてのみ使用可能です。

Exposure to Radio Frequency Energy

The radiated output power of this device is well below the FCC and EU radio frequency exposure limits. However, this device should be operated with a minimum distance of at least 20 cm between its antennas and a person's body and the antennas used with this transmitter must not be co-located or operated in conjunction with any other antenna or transmitter subject to the conditions of the FCC Grant.

FCC Bluetooth Wireless Compliance

The antenna used with this transmitter must not be colocated or operated in conjunction with any other antenna or transmitter subject to the conditions of the FCC Grant.

Bluetooth Industry Canada Statement

This Class B device meets all requirements of the Canadian interference-causing equipment regulations. Cet appareil numérique de la Class B respecte toutes les exigences du Règlement sur le matériel brouilleur du Canada.

Industry Canada Statement

Complies with the Canadian ICES-003 Class B specifications. Cet appareil numérique de la classe B est conforme à la norme NMB-003 du Canada. This device complies with RSS 210 of Industry Canada.

Bluetooth Europe—EU Declaration of Conformity

This wireless device complies with the R&TTE Directive.

Europe—EU Declaration of Conformity

See www.apple.com/euro/compliance.



European Community

Complies with European Directives 72/23/EEC and 89/336/EEC.

Korea Warning Statements

“답해 우선설비는 운용 중 전파혼신 가능성이 있음”
“이 기기는 인명안전과 관련된 서비스에 사용할 수 없습니다.”

B급 기기(가정용 방송통신기기)

이 기기는 가정용(B급)으로 전자파적합등록을 한 기기로서 주로 가정에서 사용하는 것을 목적으로 하며, 모든 지역에서 사용할 수 있습니다.

Singapore Wireless Certification

Complies with
IDA Standards
DB00063

Taiwan Wireless Statements

無線設備的警告聲明

經型式認證合格之低功率射頻電機，非經許可，公司、商號或使用者均不得擅自變更頻率、加大功率或變更原設計之特性及功能。低功率射頻電機之使用不得影響飛航安全及干擾合法通信；經發現有干擾現象時，應立即停用，並改善至無干擾時方得繼續使用。前項合法通信指依電信法規定作業之無線電通信。低功率射頻電機須忍受合法通信或工業、科學及醫療用電波輻射性電機設備之干擾。

如有這 頻率:

於 5.25GHz 至 5.35GHz 區域內操作之
無線設備的警告聲明

工作頻率 5.250 ~ 5.350GHz 該頻限於室內使用。

Taiwan Class B Statement

Class B 設備的警告聲明

NIL

警告

本電池如果更換不正確會有爆炸的危險
請依製造商說明書處理用過之電池

VCCI Class B Statement

情報処理装置等電波障害自主規制について

この装置は、情報処理装置等電波障害自主規制協議会 (VCCI) の基準に基づくクラス B 情報技術装置です。この装置は家庭環境で使用されることを目的としていますが、この装置がラジオやテレビジョン受信機に近接して使用されると、受信障害を引き起こすことがあります。

取扱説明書に従って正しい取扱をしてください。

Russia



ME67

Mouse Class 1 Laser Information

The Apple Magic Mouse is a Class 1 laser product in accordance with IEC60825-1 A1 A2 and 21 CFR 1040.10 and 1040.11 except for deviations pursuant to Laser Notice No. 50, dated July 26, 2001.

Caution: Modification of this device may result in hazardous radiation exposure. For your safety, have this equipment serviced only by an Apple Authorized Service Provider.

A Class 1 laser is safe under reasonably foreseeable conditions per the requirements in IEC 60825-1 AND 21 CFR 1040. However, it is recommended that you do not direct the laser beam at anyone's eyes.

External USB Modem Information

When connecting your iMac to the phone line using an external USB modem, refer to the telecommunications agency information in the documentation that came with your modem.

ENERGY STAR® Compliance



As an ENERGY STAR® partner, Apple has determined that standard configurations of this product meet the ENERGY STAR® guidelines for energy efficiency. The ENERGY STAR® program is a partnership with electronic equipment manufacturers to promote energy-efficient products. Reducing energy consumption of products saves money and helps conserve valuable resources.

This computer is shipped with power management enabled with the computer set to sleep after 10 minutes of user inactivity. To wake your computer, click the mouse or press any key on the keyboard.

For more information about ENERGY STAR®, visit:
www.energystar.gov

Türkiye

EEE Yönetmeliğine (Elektrikli ve Elektronik Eşyalarda Bazı Zararlı Maddelerin Kullanımının Sınırlanırılmasına Dair Yönetmelik) uygundur.

中国

有毒或 有害物质	零部件				
	电路板	显示屏	电池	附件	键盘/鼠标
铅 (Pb)	X	X	X	X	X
汞 (Hg)	0	0	0	0	0
镉 (Cd)	0	0	0	0	0
六价铬 (Cr, VI)	0	0	0	0	0
多溴联苯 (PBB)	0	0	0	0	0
多溴二苯醚 (PBDE)	0	0	0	0	0

O: 表示该有毒有害物质在该部件所有均质材料中的含量均在 SJ/T 11363-2006 规定的限量要求以下。

X: 表示该有毒有害物质至少在该部件的某一均质材料中的含量超出 SJ/T 11363-2006 规定的限量要求。

根据中国电子行业标准 SJ/T11364-2006 和相关的中国政府法规，本产品及其某些内部或外部组件上可能带有环保使用期限标识。取决于组件和组件制造商，产品及其组件上的使用期限标识可能有所不同。组件上的使用期限标识优先于产品上任何与之相冲突的或不同的环保使用期限标识。



Disposal and Recycling Information



This symbol indicates that your product must be disposed of properly according to local laws and regulations. When your product reaches its end of life, contact Apple or your local authorities to learn about recycling options.

For information about Apple's recycling program, go to www.apple.com/environment/recycling.

Brazil—Disposal Information:



Brasil: Informações sobre eliminação e reciclagem

O símbolo indica que este produto e/ou sua bateria não devem ser descartadas no lixo doméstico. Quando decidir descartar este produto e/ou sua bateria, faça-o de acordo com as leis e diretrizes ambientais locais. Para informações sobre o programa de reciclagem da Apple, pontos de coleta e telefone de informações, visite www.apple.com/br/environment.

European Union—Disposal Information:



The symbol above means that according to local laws and regulations your product should be disposed of separately from household waste. When this product reaches its end of life, take it to a collection point designated by local authorities. Some collection points accept products for free. The separate collection and recycling of your product at the time of disposal will help conserve natural resources and ensure that it is recycled in a manner that protects human health and the environment.

Caution: There is a risk of explosion if the battery is replaced by an incorrect type. Dispose of used batteries according to the instructions in this manual.

Achtung: Wenn die Batterie nicht mit dem richtigen Batterietyp ersetzt wird, besteht Explosionsgefahr. Entsorgen Sie verbrauchte Batterien gemäß der Anweisungen in diesem Handbuch.

Attenzione: C'è rischio di esplosione se la batteria viene sostituita con un tipo di batteria non corretto. Smaltire le batterie usate secondo le istruzioni riportate in questo manuale.

WARNING: Om batteriet ersätts med ett batteri av fel typ finns det risk för explosion. Lämna in batteriet för återvinning i enlighet med anvisningarna i denna handbok.

Battery Disposal Information

Dispose of batteries according to your local environmental laws and guidelines.

California: The coin cell battery in the optional Apple Remote contains perchlorates. Special handling and disposal may apply. Refer to: www.dtsc.ca.gov/hazardouswaste/perchlorate

Deutschland: Dieses Gerät enthält Batterien. Bitte nicht in den Hausmüll werfen. Entsorgen Sie dieses Gerätes am Ende seines Lebenszyklus entsprechend der maßgeblichen gesetzlichen Regelungen.

Das Gerät enthält Batterien. Diese gehören nicht in den Hausmüll. Sie können verbrauchte Batterien beim Handel oder bei den Kommunen unentgeltlich abgeben. Um Kurzschlüsse zu vermeiden, kleben Sie die Pole der Batterien vorsorglich mit einem Klebestreifen ab.

Nederlands: Gebruikte batterijen kunnen worden ingeleverd bij de chemor of in een speciale batterijcontainer voor klein chemisch afval (kca) worden gedeponeerd.

Taiwan:



廢電池請回收

Looking for Something?

Index

A

- AirPort Extreme
 - overview 23
 - problems 52
 - using 33
- AppleCare 58
- Apple Hardware Test 49
- Apple Magic Mouse 25, 28, 48
- Apple Remote 15, 30, 33
- Apple Wireless Keyboard 25, 26, 47
- applications
 - Force Quit 45
 - freezing 54
 - Front Row 33
 - iLife 32, 55
 - installing 55
 - stopping 54
 - transferring 14
- assistants
 - Migration Assistant 14
 - Network Setup Assistant 50
 - Setup Assistant 14
- audio in/optical digital audio in port 21

B

- batteries
 - Apple Remote 31
 - disposal 74
 - wireless keyboard 47
 - wireless mouse 48
- Bluetooth technology
 - overview 23
- brightness keys 25
- built-in
 - iSight camera 19
 - microphone 19
 - speakers 19
- button, power 15

C

- cable modem 11
- camera
 - indicator light 19
 - iSight 19
- carrying your computer 66
- chair 70
- changing
 - System Preferences 14
 - the desktop 14

- cleaning
 - the display 67
 - the mouse 68
 - your iMac 67
- computer. See iMac
- computer disposal 74
- connecting
 - an Ethernet cable 11
 - a USB keyboard 12
 - a USB mouse 12
 - cable modem 11
 - dial-up modem 11
 - DSL modem 11
 - FireWire devices 21
 - headphones 21
 - to a network 11
 - USB devices 21
- controls
 - brightness 25
 - eject CD or DVD 25
 - media 25
 - volume 25
- D
 - Dashboard key 25
 - date and time settings 57
 - deauthorize iTunes 14
 - desktop, customizing 14

dial-up connection 11
DIMMs. *See* memory
discs, supported types 67
display
 cleaning 67
 ergonomics 69
Dock 32
downloading software 53
DSL modem 11

E

ejecting a disc 56
environment 70
ergonomics 68
Ethernet 11
Ethernet port 21
Exposé 25
external USB modem 11, 21, 73

F

F1 to F12 function keys 25
factory settings 54
FireWire
 connections 33
 port 21
flashing question mark 46
Force Quit, an application 45,
 54
Front Row application 33
frozen application 54
function keys 25

H

hand positions 68
headphone port 21

I

iChat application 19
iLife applications 32, 55
iMac
 back view 22
 cleaning 67
 features 18
 front view 18
 other components 22
 ports 20
 putting to sleep 15
 setting up 10
 shutting down 16
 turning on 13
indicator light
 camera 19
 keyboard 26
 mouse 28
infrared receiver 19
installing
 applications 56
 Mac OS X 54
Internet
 connecting 11
 connection problems 50
IP
 address sharing 52
 masquerading 52

iSight 19
iTunes, deauthoring 14
iTunes Store 14

K

keyboard
 about 25
 ergonomics 68
 features 24
 function keys 25
 indicator light 26
 pairing 27
 setup 12
 using 27
 wireless 12
keys
 brightness 25
 Dashboard 25
 Exposé 25
 media 25
 Media Eject 25
 volume 25

M

Mac Help 8, 14, 32, 44, 58
Mac OS X
 installing 54
 website 32
Magic Mouse 25, 28, 48
Media Eject Key 25
media keys 25

- memory
 - access door 23, 38
 - how much is installed 42
 - installing 37
- microphone 19
- Migration Assistant 14
- modem
 - cable 21
 - DSL 21
 - external USB 11, 21, 73
- mouse
 - cleaning 68
 - features 25
 - indicator light 28
 - pairing 29
 - setting up 12
 - using 29
 - wireless 12

N

- network
 - address translation (NAT) 52
 - connecting to 11
 - connection problems 52
 - diagnostics 50
 - setup assistant 50
 - wireless 11
- Network Setup Assistant 50

O

- online resources 57
- onscreen help 58
- operating environment 66
- optical digital audio 21
- optical drive
 - about 19
 - safety 65
 - supported disc sizes 67

P

- pairing
 - keyboard 27
 - mouse 29
 - remote 31
- parameter RAM, resetting 46
- ports
 - audio in 21
 - audio out 21
 - Ethernet 21
 - FireWire 800 21
 - headphone 21
 - overview 20
 - power 10, 23
 - USB 12, 21
- power button 12, 23
- power port 10, 23
- power specifications 64
- PPPoE connections 51
- problems. *See* troubleshooting

Q

- question mark, flashing 46

R

- RAM. *See* memory
- reinstalling software 54
- replacing batteries 47, 48
- resetting parameter RAM (PRAM) 46

S

- safety
 - important information 62
 - optical drive 65
- screen brightness, setting 25
- SD card slot 19
- SDRAM. *See* memory
- security slot 23
- serial number 60
- service and support 57, 58
- setting up your iMac 10
- Setup Assistant 14
- shutting down
 - before installing memory 37
 - the computer 16
- sleep 15
- software
 - installation discs 54
 - updating 53
- Software Update 53
- S/PDIF stereo 21
- speakers 19, 21

- specifications
 - in System Profiler 33
 - operating environment 66
 - power 64
- stopping an application 54
- storing your iMac 67
- SuperDrive
 - about 19
 - supported disc sizes 67
- support and service 57, 58
- System Preferences
 - customizing the desktop 14
 - Energy Saver 15
 - Software Update 53, 56
 - Startup Disk 46
- System Profiler 58

T

- transferring information 14
- troubleshooting
 - AirPort connection 52
 - AppleCare 58
 - computer freezes during startup 46
 - computer won't respond 45
 - computer won't turn on 46
 - date and time settings 57
 - ejecting a disc 56
 - force an application to quit 45
 - Internet connection 50
 - PPPoE connections 51

- reinstalling Mac OS X 54
- resetting PRAM 46
- service and support 57
- using Mac Help 58
- turning on your iMac 13
- typing position 68

U

- updating software 53
- USB
 - connections 33
 - keyboard, connecting 12
 - mouse, connecting 12
 - ports 21
- user account
 - setting up 14
 - transferring information 14

V

- Volume keys 25

W

- wake from sleep 15
- wireless
 - AirPort Extreme 23
 - Bluetooth technology 23
 - keyboard 12, 27
 - mouse 12, 28
 - networking 11

 Apple Inc.
© 2010 Apple Inc. All rights reserved.

Under the copyright laws, this manual may not be copied, in whole or in part, without the written consent of Apple.

Every effort has been made to ensure that the information in this manual is accurate. Apple is not responsible for printing or clerical errors.

Apple
1 Infinite Loop
Cupertino, CA 95014
408-996-1010
www.apple.com

The Apple logo is a trademark of Apple Inc., registered in the U.S. and other countries. Use of the "keyboard" Apple logo (Option-Shift-K) for commercial purposes without the prior written consent of Apple may constitute trademark infringement and unfair competition in violation of federal and state laws.

Apple, the Apple logo, AirPort, AirPort Extreme, Cover Flow, Exposé, FireWire, GarageBand, iCal, iChat, iLife, iMac, iMovie, iPhone, iPhoto, iPod, iSight, iTunes, Keynote, Mac, Mac OS, Photo Booth, QuickTime, Safari, Snow Leopard, Spotlight, SuperDrive, and Time Machine are trademarks of Apple Inc., registered in the U.S. and other countries.

Finder, the FireWire logo, iPad, and Multi-Touch are trademarks of Apple Inc.

AppleCare, Apple Store, and iTunes Store are service marks of Apple Inc., registered in the U.S. and other countries.

ENERGY STAR® is a U.S. registered trademark.

The Bluetooth® word mark and logos are registered trademarks owned by Bluetooth SIG, Inc. and any use of such marks by Apple is under license.

Other company and product names mentioned herein may be trademarks of their respective companies. Mention of third-party products is for informational purposes only and constitutes neither an endorsement nor a recommendation. Apple assumes no responsibility with regard to the performance or use of these products.

Manufactured under license from Dolby Laboratories. "Dolby," "Pro Logic," and the double-D symbol are trademarks of Dolby Laboratories. Confidential Unpublished Works, © 1992–1997 Dolby Laboratories, Inc. All rights reserved.

Simultaneously published in the United States and Canada.

Free Manuals Download Website

<http://myh66.com>

<http://usermanuals.us>

<http://www.somanuals.com>

<http://www.4manuals.cc>

<http://www.manual-lib.com>

<http://www.404manual.com>

<http://www.luxmanual.com>

<http://aubethermostatmanual.com>

Golf course search by state

<http://golfingnear.com>

Email search by domain

<http://emailbydomain.com>

Auto manuals search

<http://auto.somanuals.com>

TV manuals search

<http://tv.somanuals.com>