



EasyCam™ Twin User's Manual

HO98068



www.jascoproducts.com

For technical support contact Jasco Products at 1-800-654-8483.

Revision 2

Download from [Www.Somanuals.com](http://www.Somanuals.com). All Manuals Search And Download.

Table of Contents

CAUTIONS	3
SYSTEM REQUIREMENTS	3
MAINTENANCE CARE AND STORAGE.....	3
CAMERA CONTENTS.....	4
GETTING TO KNOW YOUR EASYCAM™ TWIN FOR LAPTOP	4
GETTING TO KNOW YOUR EASYCAM™ TWIN FOR DESKTOP	5
INSTALLATION	6
PHOTOIMPRESSIONS™.....	8
VIDEO IMPRESSION™	11
MSN® MESSENGER.....	13
TROUBLE SHOOTING	14
TWO YEAR LIMITED WARRANTY	15
FCC STATEMENT	16

Cautions

Read Before Using Your EasyCam™ Twin

1. You must install the camera driver BEFORE connecting the camera to your computer.
2. Please read this user's manual before operating your EasyCam™ Twin.
3. Do not leave the camera connected to the USB port if the camera is not going to be used for a long period of time.

System Requirements

1. Operating System
 - a. Microsoft® Windows® 98 SE
 - b. Microsoft® Windows® ME
 - c. Microsoft® Windows® 2000
 - d. Microsoft® Windows® XP
2. CD drive
3. USB port

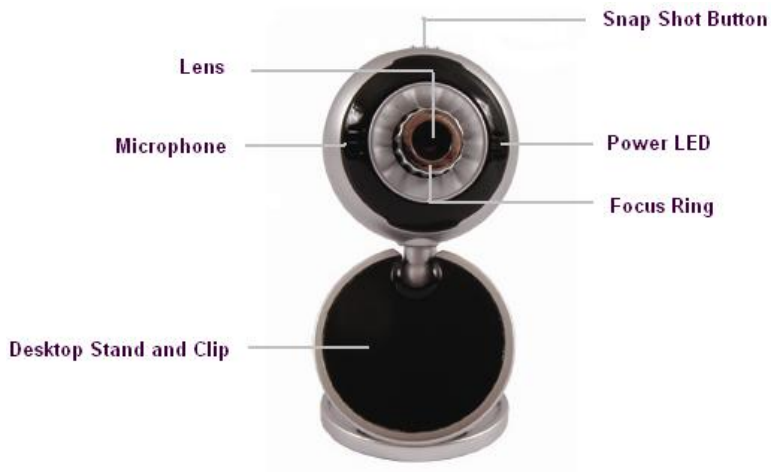
Maintenance Care and Storage

1. Do not use or store the camera in high humidity and extreme high/low temperature.
2. Do not touch the lens with your fingers.
3. Do not drop the camera or get the camera wet.
4. Do not try to repair the camera.
5. To clean the camera, use a dry cloth. Do not use organic solvents, such as alcohol to clean the camera.
6. Store the camera in a dry and clean place

Camera Contents

1. EasyCam™ Twin for Desktop with stand and clip
2. EasyCam™Twin for Laptop
3. 2 CDs with Drivers and Software Applications
4. 2 Instruction Manuals

Getting to Know Your EasyCam™ Twin for Laptop



Note: You must install the camera driver **BEFORE** connecting the camera to your computer.

Getting to Know Your EasyCam™ Twin for Desktop



Note: You must install the camera driver **BEFORE** connecting the camera to your computer.

Installation

Please note that you must install the camera's driver BEFORE you connect the camera to the USB port of your computer.

1. Install all relevant updates, service packs, and patches for your operating system. These are available on Microsoft's® website under "Resources". Use the "Windows Update" link. (www.microsoft.com).
2. Insert the included 98068 EasyCam™ Twin CD into the CD Rom Drive of your computer. (The CD should auto load).
3. If CD does not auto load, follow these steps:
 - a. Double click on My Computer
 - b. Double click on the CD icon of the CD drive (Usually D:\)
 - c. Double click on setup.exe
4. The installation menu will come up. Select **EasyCam™ Twin 98068 Driver**.
5. Select **Next** on the Welcome screen.
6. Select the **Complete** set up type, and then **Next** to continue.
7. Select **Install** to begin copying the driver files to your computer.
8. On the final screen, select **Finish**.
9. *(Optional)* On the installation menu, select ArcSoft VideoImpression™ if desired. Follow the on-screen instructions to complete the installation. DirectX® may install as well. Please follow the instructions to complete the installation. You may need to reboot your computer.
10. *(Optional)* On the installation menu, select ArcSoft PhotoImpression™ if desired. Follow the on-screen instructions to complete the installation. You may need to reboot your computer.

11. *(Optional)* Select **User's Manuals** to open a PDF version of the 98068 Instruction Manual in both English and Spanish. You will need Adobe Reader to open the user's manuals.
12. *(Optional)* To download Adobe® Reader® select **Adobe Reader** and follow the instructions. You may need to reboot your computer.
13. When you have installed the driver, and all of the optional software you want to install, select **Exit**.
14. Remove the warning label from the USB plug of your EasyCam™ Twin.
15. After your computer reboots, plug your EasyCam™ Twin's USB plug into the USB plug of your computer.
16. Open ArcSoft VideoImpression™ or ArcSoft PhotoImpresssion™ and follow the instructions below to begin using your EasyCam™ Twin camera. Enjoy!

PhotoImpressions™

Welcome to PhotoImpressions

ArcSoft PhotoImpression™ is an easy-to-use image-editing program specifically designed for general consumers. The program enables you to edit, retouch, enhance or add special effects to digital images with point-and-click simplicity. It also offers a great variety of project templates for creating greeting cards and calendars, plus the functionalities of the popular Arcsoft PhotoPrinter® and Funhouse™ programs.

ArcSoft PhotoImpression™ is an all-inclusive application designed specifically for novice users. It combines photo editing with additional creative and printing tools that maximize your digital imaging experience.

Features include:

- Create dynamic images
- Editable text
- Instantly remove red-eye
- Special effects and enhancements/Intuitive resize options
- Photo fun
- Choose from a wide variety of frames, brush stroke edges and shapes
- Multiple, advanced printing options--now with PIM!
- Desktop interaction
- Works great with digital cameras and scanners

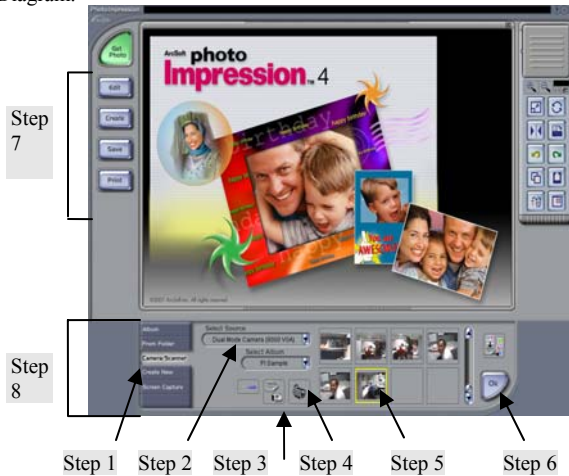


To Open ArcSoft PhotoImpression™

1. Double click on the ArcSoft PhotoImpression™ icon on the desktop.
2. You may also go to ArcSoft under Programs in the Start Menu, and click on Photo Impression.

Using Photo Impression

1. Click on “**Camera/Scanner**”. See Diagram.
2. Select “USB PC Camera 302” from the drop down “Select Source” menu. See Diagram.



3. Capture Method 1: Click on “**Acquire**”. See Diagram.
4. Capture Method 2: Click on “**Video Camera**”. See Diagram.

Edit Captured Pictures

5. After you have captured pictures, you're ready to edit them. To get started select a picture from the ones you captured. See Diagram.
6. Select "**OK**". Your picture will open in the main window. See Diagram.
7. Click on the Edit, Create, Save or Print button on the left. See Diagram.
8. The associated menus are located on the bottom of the screen. Scroll through those to find what you need. See Diagram. Have fun!

Note: Captured photos are stored in the "My Pictures" folder in My Documents by default.

If you need more help, click on the "?" in the upper right-hand corner of the screen.

Visit www.arcsoft.com for a tutorial, full manual, technical assistance, patches, free card and calendar templates and other fun stuff.

Video Impression™

ArcSoft Video Impression™ is a powerful, easy-to-use video editing and presentation program designed for consumers. ArcSoft Video Impression™ enables you to edit video clips and still images, and to combine them to create multimedia desktop video presentations for home, business, and the Internet.

ArcSoft Video Impression™ is your ticket to cool home movies and slide shows. If you know how to drag-and-drop with your mouse, you're all set! In no time you can combine still images, video clips, audio tracks, text, and special effects into your very own movie. Make a VCD and play your movie on your DVD player!



Working with Video Impression

- Getting Started
- Working with Albums
- Working with the Storyboard
- Editing Images
- Editing Video
- Editing Audio
- Printing a Still Image from a Video
- Saving a Movie

ArcSoft Video Impression™ - Getting Started

1. Open ArcSoft Video Impression™
 - A) Double click on the Video Impression icon on your desktop.
 - B) You may also go to ArcSoft under Programs in the Start Menu, and click on Video Impression
2. Click on the film reel icon to the right of **“New”**.
3. Click on the video camera icon to the right of **“Capture”**.
4. You should be viewing live video now. If not click on the eye icon to start viewing live video.
5. When you're ready to record, click the record button (●).
6. Use the pause button (■) to stop recording.
7. The play button (▶) will play back your video.
8. If you want to save what you have recorded, click the album icon to the right of **“Album”**.

If you need more help, click on the “?” in the upper right-hand corner of the screen.

Note: If you are trying to send a video clip by email, your email provider may have a size limitation.

Visit www.arcsoft.com for a tutorial, full manual, technical assistance, patches, templates and other fun stuff.

MSN® Messenger

Installing/Opening MSN® Messenger

A. Windows® 98/ME/2000

- Log on to <http://messenger.msn.com> to download
- After it has downloaded, you can open MSN® Messenger by going to Start → Programs → Windows Messenger.

B. Windows® XP

- MSN® Messenger is already installed
- Open MSN® Messenger by going to Start → Programs → Windows Messenger.

Using MSN® Messenger with your camera

1. Make sure the EasyCam™ Twin driver has been installed.
2. Plug the camera into any USB port on your computer.
3. Open MSN® Messenger using the instructions above.
4. To start a video conference
 - a. In Windows® 98/ME/2000 click on **NetMeeting**.
 - b. In Windows® XP click on **Actions** → **Start a Video Conversation**.

Note1: In order to chat and share video with a friend, you will need to add your friend to your contact list. Your friend will also need to use MSN® Messenger. This can be downloaded for free from: <http://messenger.msn.com>

Note 2: Windows® XP users may be asked to add a .NET Passport to your user account. Follow the instructions.

If you need more help, click on "Help" in the upper right-hand corner of the screen.

Visit <http://messenger.msn.com> for additional information and technical assistance

Trouble Shooting

1. Camera will not turn on
 - Make sure the camera is plugged into the USB port correctly
 - Make sure your USB port is functioning properly. You may need to install updates, service packs, or patches for your operating system from Microsoft's® website, www.microsoft.com. Go to "Windows Update" under Resources.
2. Uninstall the EasyCam™ Twin driver
 - Close all open applications.
 - Go to the Start Menu → (Settings in some operating systems) → Control Panel → Add/Remove Programs
 - Select "GE 98068 EasyCam Twin"
 - Select "Remove", then "OK" to uninstall the driver.
 - Select "Yes, I want to restart my computer", then "Finish".
 - Your computer will now reboot.
3. "Can't detect camera", "Can't find VFW driver", or "Can't find camera driver" errors
 - Close all open applications.
 - Unplug the EasyCam™ Twin from your computer.
 - Uninstall the EasyCam™ Twin software according to the directions above, then reboot your computer.
 - Re-install the EasyCam™ Twin driver according to the installation directions, then reboot your computer.
 - Plug in your EasyCam™ Twin.
4. Problems with NetMeeting
 - Visit <http://www.microsoft.com/windows/netmeeting/>
5. Problems with Photo Impression™ or Video Impression™
 - Visit <http://www.arcsoft.com>
6. Problems with MSN™ Messenger
 - Visit <http://messenger.msn.com>

If your mouse still does not work after following these steps, please contact Jasco Products Technical Support at 1-800-654-8483 or visit our website at www.jascoproducts.com.

TWO YEAR LIMITED WARRANTY

Jasco Products Company warrants this product to be free from manufacturing defects for a period of two years from the original date of consumer purchase. This warranty is limited to the repair or replacement of this product only and does not extend to consequential or incidental damage to other products that may be used with this unit. This warranty is in lieu of all other warranties express or implied. Some states do not allow limitations on how long an implied warranty lasts or permit the exclusion or limitation of incidental or consequential damages, so the above limitations may not apply to you. This warranty gives you specific rights, and you may also have other rights which vary from state to state. If unit should prove defective within the warranty period, return prepaid with dated proof of purchase to:

Jasco Products Company
311 N.W. 122nd
Oklahoma City, OK 73114

FCC Statement

Notice: Federal Communications Commission (FCC) requirements, Part 15

This equipment has been tested and found to comply with the limits for a class B digital device, pursuant to part 15 of the FCC Rules. These limits are designed to provide reasonable protection against harmful interference in a residential installation. This equipment generates, uses and can radiate radio frequency energy and, if not installed and used in accordance with the instructions, may cause harmful interference to radio communications. However, there is no guarantee that interference will not occur in a particular installation. If this equipment does cause harmful interference to radio or television reception, which can be determined by turning the equipment off and on, the user is encouraged to try to correct the interference by one or more of the following measures:

- Reorient or relocate the receiving antenna.
- Increase the separation between the equipment and receiver.
- Connect the equipment into an outlet on a circuit different from that to which the receiver is connected.
- Consult the dealer or an experienced radio/TV technician for help.

CAUTION: Any changes of modifications not expressly approved by the grantee of this device could void the user's authority to operate the equipment.

This device complies with Part 15 of the FCC Rules. Operation is subject to the following two conditions: (1) this device may not cause harmful interference, and (2) this device must accept any interference received, including interference that may cause undesired operation.

Free Manuals Download Website

<http://myh66.com>

<http://usermanuals.us>

<http://www.somanuals.com>

<http://www.4manuals.cc>

<http://www.manual-lib.com>

<http://www.404manual.com>

<http://www.luxmanual.com>

<http://aubethermostatmanual.com>

Golf course search by state

<http://golfingnear.com>

Email search by domain

<http://emailbydomain.com>

Auto manuals search

<http://auto.somanuals.com>

TV manuals search

<http://tv.somanuals.com>