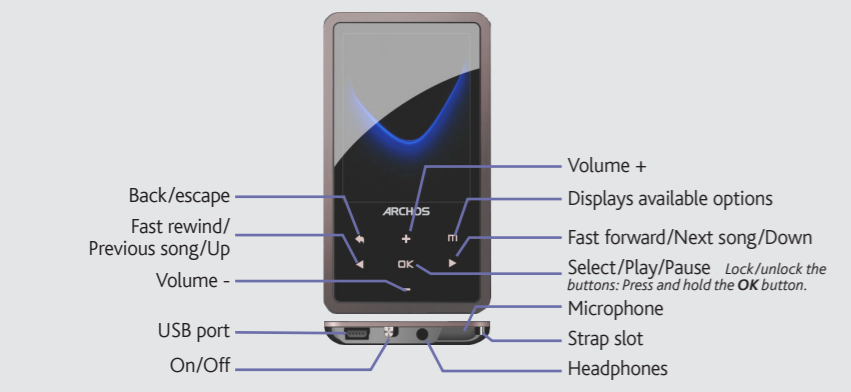


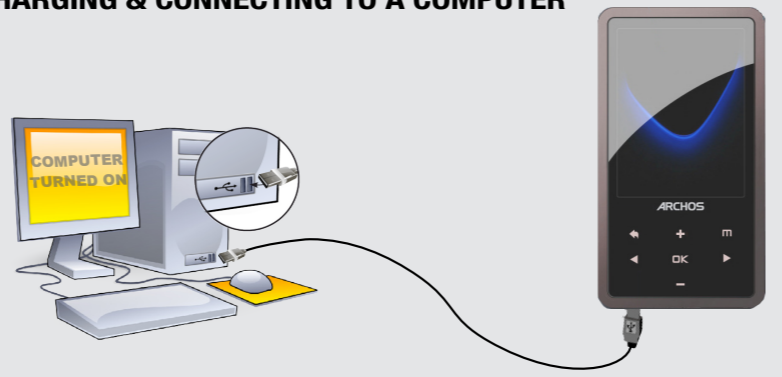
ARCHOS 24c VISION

EN



To turn the device on, slide the ON/OFF switch to the ON position and then hold the button for a few seconds. To turn the device off, hold the button or slide the ON/OFF switch to the OFF position.

CHARGING & CONNECTING TO A COMPUTER

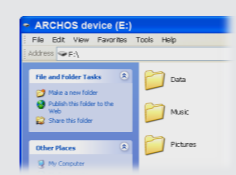


Charging: Whenever your ARCHOS is connected to a running computer, it will charge automatically (even if you unmount it with the safe removal icon).

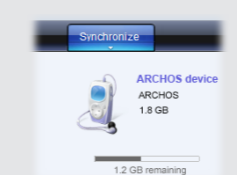
Connecting: When you connect the USB cable to your computer, the ARCHOS will connect as an external hard drive. Windows® Explorer will show it as ARCHOS (E:) for example. For Macintosh® computers, it will also appear as an external hard drive.

PUTTING VIDEOS, MUSIC AND PHOTOS ONTO YOUR ARCHOS

You can transfer your media files to the ARCHOS either by copy/pasting them into the respective folders using Windows® Explorer (or the Finder on a Macintosh®), or by using Windows Media® Player. The Synchronize button in Windows Media® Player is a one way 'sync' button. It will add video, music and photo files to your ARCHOS. It will give you the possibility to have the same digital media on your ARCHOS as you have in your Windows Media® Player library.



Copy/paste with Windows® Explorer



Synchronize with Windows Media® Player 11

On your computer, start Windows Media® Player. 1) Select the **Sync** tab. 2) Drag the media files you want to transfer into the sync area in the panel on the right. 3) Click on the **Start Sync** button. The selected videos, songs or photos will be copied directly into the corresponding **Video, Music or Pictures** folder of the ARCHOS. See your Windows Media® Player help instructions for more information. To receive and play podcasts, you can use freely available software from the Internet such as the popular Juice program to get your podcasts and then you can transfer them to your ARCHOS.

VIDEO PLAYBACK

Opening the Video browser will display a list of the video files (and only video files) that have been saved into the **Video** folder on the ARCHOS. Tap the to show the on-screen controls.

FM RADIO

To use the radio, you must have the headphones plugged in as this acts as your antenna. You can record from the radio by going into the menu while it is playing.

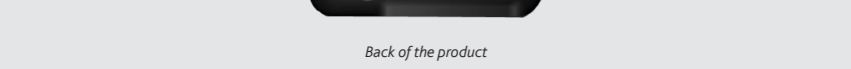
PHOTO PLAYBACK

Opening the photo browser will allow you to view the stored photos one by one or as an automatic slide show. Tap the to show the controls and start a slide show of the pictures in the current folder. The menu button will allow you to adjust how fast the slide show goes.

CAMERA

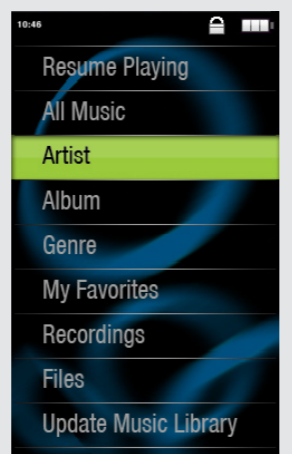


The ASF file format which is created for video files can be played on a computer with the freely downloadable VLC video player software or other such video players.



Back of the product

MUSIC SELECTION



Opening the music browser will allow you to choose your music by the title, artist, album, or genre (so long as the music files have these tag information in them). If a song has no music tags, then you can find it in the folder named **<No artist>**, **<No album>**, etc.

If a lyrics file (text file of type .LRC) is found in the same folder and has the same name as the song playing, the song lyrics will be shown while the song plays (> **Display** > **Display Lyrics**). The ARCHOS will not play DRM protected music (these are typically music files that have been purchased on-line).

OTHER FUNCTIONS

WALLPAPER CHANGER Allows you to choose one of the preset choices of wallpapers (**Settings** > **Set Wallpaper**).

SETTINGS These are the main settings of the ARCHOS and allow you to set items such as automatic power-off time, screen brightness, the time & date, or language.

LANGUAGE: Allows you to set your interface language

Note: This device is also capable of displaying simple text (.txt) files.

MUSIC PLAYBACK

- 1. Volume Control
- 2. Song title
- 3. Album name
- 4. Artist name
- 5. Play mode *(Tap on icon to change the mode: Normal or Shuffle)*
- 6. Repeat Mode *(Tap on icon to change the mode: Normal or Repeat)*
- 7. Elapsed time
- 8. Song item *out of total number of songs on the device/folder*
- 9. Total song length
- 10. Back *(tap to start the previous song or hold to backup quickly within the song)*
- 11. Play/pause
- 12. Forward *(tap to start the next song or hold to forward quickly within the song)*
- 13. Playback options



TROUBLESHOOTING

PROBLEM: The video/music file I saved onto the ARCHOS does not play or plays incorrectly.
SOLUTION: Make sure that it is in a format that is supported by the ARCHOS (visit www.archos.com for more information).

PROBLEM: The device is frozen and doesn't respond to tapping on the screen.
SOLUTION: Turn off the device with the switch on the bottom and restart as normal.

PROBLEM: I added new music to my ARCHOS but it does not show up in the Music browser.
SOLUTION: You must place your files in the Music folder on the ARCHOS. If it does not have music tags, it will be listed under **<No artist>**, **<No album>**, etc. Select **Update Music Library** (bottom item on list) which will update the Library with all the latest added music.

PROBLEM: I cannot see a file that I just copied to my ARCHOS.
SOLUTION: Remember that when you are browsing in the Music or Photo folders, the files that are not of those types will not be visible - even though they are there. Use the **Files** browser to see all your files.

REGISTER YOUR PRODUCT!

Once you unpack your ARCHOS product, we recommend that you take a few minutes to register it. This will allow you to get access to our technical support.

On our Website: See the Frequently Asked Questions section on www.archos.com/faq
Technical Support Team: Visit www.archos.com/support for e-mail support.

WARNING

To prevent fire or shock hazard, do not expose the unit to rain or moisture. Use of this product is for personal use only. Copying CDs or loading music, video, or picture files for sale or other business purposes is or may be a violation of copyright law. Copyrighted materials, works of art, and/or presentations may require authorization to be fully or partially recorded. Please be aware of all such applicable laws concerning the recording and use of such for your country and jurisdiction. For driving safety, only a passenger should operate the device when the car is in motion and not the driver. Laws governing the usage of electronic device by the driver may be applicable in your jurisdiction and/or country.

LEGAL AND SAFETY INFORMATION

Warranty and Limited Liability
This product is sold with a limited warranty and specific remedies are available to the original purchaser in the event the product fails to conform to the limited warranty. Manufacturer's liability may be further limited in accordance with its sales contract. In general, and in a non-limited manner, the manufacturer shall not be responsible for product damages caused by natural disasters, fire, static discharge, misuse, abuse, neglect, improper handling or installation, unauthorized repair, alteration or accident. In no event shall the manufacturer be liable for loss of data stored on disk media. MANUFACTURER SHALL NOT BE LIABLE FOR ANY SPECIAL, INCIDENTAL OR CONSEQUENTIAL DAMAGES, EVEN IF INFORMED OF THE POSSIBILITY THEREOF IN ADVANCE. ARCHOS licensor(s) makes no warranties, express or implied, including, without limitation, the implied warranties of merchantability and fitness for a particular purpose, regarding the licensed materials. ARCHOS' licensor(s) does not warrant, guarantee or make any representations regarding the use or the results of the use of the licensed materials in terms of its correctness, accuracy, reliability, correctness or otherwise. The entire risk as to the results and performance of the licensed materials is assumed by you. The exclusion of implied warranties is not permitted by some jurisdictions. The above exclusion may not apply to you.

In no event will ARCHOS' licensor(s), and their directors, officers, employees or agents (collectively ARCHOS' licensor) be liable to you for any consequential, incidental or indirect damages (including damages for loss of business profits, business interruption, loss of business information, and the like) arising out of the use of or inability to use the licensed materials even if ARCHOS' licensor has been advised of the possibility of such damages. Because some jurisdiction do not allow the exclusion or limitation of liability for consequential or incidental damages, the above limitations may not apply to you. Please see your sales contract for a complete statement of warranty rights, remedies and limitation of liability.

- Furthermore, warranty does not apply to:
- 1. Damages or problems resulting from misuse, abuse, accident, alteration or incorrect electrical current or voltage
 - 2. Any product tampered-with or damaged warranty seal or serial number label.
 - 3. Any product without a warranty or serial number label.
 - 4. Batteries and any consumable items delivered with or in the equipment.

The end user is required to use this product only in conformity with its original purpose and is strictly forbidden to make any technical modifications that could potentially impinge on the rights of third parties. Any modification to the hardware, software, or physical enclosure of the product must be approved in writing by ARCHOS. Non approved modified products are subject to the withdrawal of any or all guaranty clauses.

As part of the contractual agreement of its products, ARCHOS is committed to ensure the availability of parts and components that are essential to the use and proper working conditions of its products. This availability will be guaranteed for a period of two years, as of the first retail release for customers.

Lithium-Ion Battery Caution
This product is equipped with a Lithium-Ion battery. Do not pierce, open, disassemble it, or use it in a humid and/or corrosive environment. Do not put, store or leave your product in or near sources of heat, in direct strong sunlight, in a high temperature location, in a pressurized container or in a microwave oven. Do not expose it to temperatures over 60 C (140 F). If the battery leaks and you come into contact with the leaked fluids, rinse thoroughly with water and seek medical attention immediately. Failure to follow these instructions could cause the Lithium-Ion battery to leak acid, become hot, explode or ignite and cause injury and/or damage.

Only ARCHOS certified technicians are qualified to repair your ARCHOS device. In calling upon non qualified persons to repair your ARCHOS product, you run the risk of damaging your device and voiding your guaranty. To prevent risks of electric shock, this unit must only be opened by qualified service personnel.

FCC Compliance Statement
This equipment has been tested and found to comply with limits for a Class B digital device, pursuant to Part 15 of the FCC Rules. These limits are designed to provide reasonable protection against harmful interference in a residential installation. This equipment generates, uses and can radiate radio frequency energy and, if not installed and used in accordance with instructions, may cause harmful interference to radio communications. However, there is no guarantee that interference will not occur in a particular installation. If this equipment does cause harmful interference to radio or television reception, which can be determined by turning the equipment off and on, the user is encouraged to try to correct the interference by one or more of the following measures:
- Reorient or relocate the receiving antenna.
- Increase the separation between the equipment and receiver.
- Connect the equipment into an outlet on a circuit different from that to which the receiver is connected.
- Consult the dealer or an experienced radio/TV technician for help.

To assure continued compliance, any changes or modifications not expressly approved by the party responsible for compliance could void the user's authority to operate this equipment. (Example - use only shielded interface cables when connecting to computer or peripheral devices).

USA: - This device complies with Part 15 of the FCC Rules. Operation is subject to the following two conditions: (1) this device may not cause harmful interference, and (2) this device must accept any interference received, including interference that may cause undesired operation.

- FCC Radiation Exposure Statement: This equipment complies with FCC RF radiation exposure limits set forth for an uncontrolled environment. This transmitter must not be co-located or operating in conjunction with any other antenna or transmitter.

Canada: - Operation is subject to the following two conditions: (1) this device may not cause interference, and (2) this device must accept any interference, including interference that may cause undesired operation of the device.

Electrostatic Discharge (ESD)
Normal functioning of the product may be disturbed by ESD. If so, simply shut off the device with the On/Off switch and restart as normal. During file transmission, please handle with care and operate in a static-free environment.

Avoiding Hearing Damage
 This product respects the current regulations for limiting the output volume of consumer audio devices to a safe level. By listening to your device with headphones or earbuds at high volumes, you run the risk of permanent damage to your ears. Even if you get used to listening at high volumes and it seems normal to you, you still risk the possibility of damaging your hearing. Reduce the volume of your device to a reasonable level to avoid permanent hearing damage.
If you hear ringing in your ears, reduce the volume or shut off your device. This device has been tested with the ARCHOS supplied earphones. In order to preserve your hearing, it is advised that you use only the following headphone models: the earphones supplied with your ARCHOS device, or any other headphones that respect the current regulations. Other types of headphones may produce higher volume levels.

Environmental Considerations
 Protection of the environment is an important concern to ARCHOS. In order to put this concern into tangible actions, ARCHOS has consciously included a set of methods that favor a respect for the environment into the entire cycle of its products: from fabrication to consumer usage, to final disposal. Batteries : If your product contains a detachable battery pack, you should only dispose of it in a designated collection point for used batteries.

The Product : The crossed-out garbage can symbol on your product signifies that it falls into the category of electric/electronic equipment. Products of this type contain substances that are potentially dangerous to the environment and to human health. Therefore, you should not dispose of the ARCHOS electronic device in a regular trash. As such, the current European directives ask that this device be collected.

- At places of distribution in the case of a purchase of a similar electronic product.

- At locally created disposal areas (waste disposal centers, sorted trash system, etc.)

By doing this, you are actively participating in the reuse and recycling of disposed electronic and electric equipment that could have potential effects on the environment and human health.

Copyright Notice
Copyright ARCHOS © 2010. All rights reserved.
This document may not, in whole or part, be copied, photocopied, reproduced, translated or reduced to any electronic medium or machine-readable form without prior consent, in writing, from ARCHOS. All brands and products names are registered trademarks and the property of their respective owners. Specifications are subject to change without notification. Errors and omissions accepted. Images and illustrations may not always match contents.

Disclaimer of warranty: to the extent allowed by applicable law, representations and warranties of non-infringement of copyrights or other intellectual property rights resulting from the use of the product under conditions other than as here above specified, are hereby excluded.

Free Manuals Download Website

<http://myh66.com>

<http://usermanuals.us>

<http://www.somanuals.com>

<http://www.4manuals.cc>

<http://www.manual-lib.com>

<http://www.404manual.com>

<http://www.luxmanual.com>

<http://aubethermostatmanual.com>

Golf course search by state

<http://golfingnear.com>

Email search by domain

<http://emailbydomain.com>

Auto manuals search

<http://auto.somanuals.com>

TV manuals search

<http://tv.somanuals.com>