

# Jukebox Multimedia 20, 120 & AV140

PDF User Guide



Jukebox Multimedia 20



Jukebox Multimedia 120 & AV140

**ARCHOS Jukebox Multimedia 20, 120 & AV140 User Guide Version 1.1**

Please visit our web site to download the most recent manual and firmware for this product

# Table of Contents

<b>1</b>	<b>Starting up the Jukebox Multimedia</b> .....	<b>6</b>
1.1	Battery Saving Features.....	6
	<i>Auto Power Off (Power Off t.)</i> .....	6
	<i>Auto Screen Off (Backlight t.)</i> .....	6
1.2	Charging the Batteries.....	6
1.3	Caring for the Jukebox Multimedia.....	6
<b>2</b>	<b>Ports, Connections, and Buttons</b> .....	<b>7</b>
2.1	SPDIF Digital Audio.....	7
2.2	The Expansion Port.....	7
<b>3</b>	<b>Playing MP3 Music</b> .....	<b>8</b>
3.1	The Display.....	8
3.2	ID3 Tags.....	9
3.3	Navigation.....	9
3.4	Creating Directories, Deleting files, Renaming files, Viewing File Info.....	9
3.5	Entering Text.....	9
3.6	Creating and Playing Playlists.....	10
	<i>Creating a Playlist</i> .....	10
	<i>Using a Playlist from MusicMatch™</i> .....	10
	<i>Using a Playlist from iTunes™</i> .....	10
<b>4</b>	<b>Settings</b> .....	<b>12</b>
4.1	Setting the Time of Day Clock.....	12
4.2	Play Mode, Repeat, and Shuffle.....	12
4.3	Sound Settings.....	12
4.4	System Settings.....	12
4.5	Updating the Jukebox Multimedia's Operating System (OS).....	13
	<i>PC - Download the zipped file</i> .....	13
	<i>Macintosh - Download the .ajz file</i> .....	13
	<i>Copy to Jukebox and Update</i> .....	13
<b>5</b>	<b>Recording MP3 Music</b> .....	<b>15</b>
5.1	Recording.....	15
	<i>Microphone</i> .....	15
	<i>Line-In (Analog)</i> .....	15
	<i>Digital SPDIF</i> .....	15
	<i>Incremental Recording</i> .....	15
5.2	Bit Rate Table & Sample Rates.....	16
<b>6</b>	<b>Playing Video</b> .....	<b>17</b>
<b>7</b>	<b>Creating MPEG4 Video Files</b> .....	<b>18</b>
7.1	Installing the Software.....	18
	<i>DivX Codec</i> .....	18
	<i>Virtual Dub</i> .....	18
	<i>Mpeg4 Translator</i> .....	18
7.2	Using Mpeg4 Translator.....	19
	<i>Select Source &amp; Destination Files</i> .....	19
	<i>Change Settings</i> .....	19
	<i>Target &amp; Aspect Ratio (Jukebox 10 or 20)</i> .....	19
	<i>Target &amp; Priority (Jukebox 120 or AV140)</i> .....	19
	<i>Start</i> .....	20
	<i>MP3 Sound Track</i> .....	20
<b>8</b>	<b>Viewing Photos &amp; Reading Memory Cards</b> .....	<b>21</b>
8.1	Viewing Photos.....	21
8.2	Transferring Photos from a Memory Card.....	21
8.3	Creating a Slideshow.....	22
8.4	Creating Slideshows with Background Music.....	22
<b>9</b>	<b>Connecting / Disconnecting from your Computer</b> .....	<b>23</b>
9.1	Connecting the Jukebox Multimedia to your computer.....	23
	<i>Preferred Connection Order (all computers)</i> :.....	23
	<i>Installing Drivers for Windows 98SE</i> .....	23
9.2	Disconnecting the Jukebox Multimedia from your Computer.....	24
<b>10</b>	<b>Troubleshooting</b> .....	<b>25</b>
<b>11</b>	<b>Using MusicMatch™ Software</b> .....	<b>26</b>
11.1	Installing MusicMatch™.....	26
	<i>Portable Device</i> .....	26
11.2	Macintosh Users.....	26
<b>12</b>	<b>Optional Add-ons*</b> .....	<b>27</b>
<b>13</b>	<b>Technical Support</b> .....	<b>29</b>

### **Warranty and Limited Liability**

This product is sold with a limited warranty and specific remedies are available to the original purchaser in the event the product fails to conform to the limited warranty. Manufacturer's liability may be further limited in accordance with its sales contract.

In general, the manufacturer shall not be responsible for product damages caused by natural disasters, fire, static discharge, misuse, abuse, neglect, improper handling or installation, unauthorized repair, alteration or accident. In no event shall the manufacturer be liable for loss of data stored on disk media.

**MANUFACTURER SHALL NOT BE LIABLE FOR ANY SPECIAL, INCIDENTAL OR CONSEQUENTIAL DAMAGES. EVEN IF INFORMED OF THE POSSIBILITY THEREOF IN ADVANCE.**

**Archos licensor(s) makes no warranties, express or implied, including, without limitation, the implied warranties of merchantability and fitness for a particular purpose, regarding the licensed materials. Archos's licensor(s) does not warrant, guarantee or make any representations regarding the use or the results of the use of the licensed materials in terms of its correctness, accuracy, reliability, correctness or otherwise. The entire risk as to the results and performance of the licensed materials is assumed by you. The exclusion of implied warranties is not permitted by some jurisdictions. The above exclusion may not apply to you.**

In no event will Archos' licensor(s), and their directors, officers, employees or agents (collectively Archos' licensor) be liable to you for any consequential, incidental or indirect damages (including damages for loss of business profits, business interruption, loss of business information, and the like) arising out of the use of inability to use the licensed materials even if Archos' licensor has been advised of the possibility of such damages. Because some jurisdiction do not allow the exclusion or limitation of liability for consequential or incidental damages, the above limitations may not apply to you.

Please see your sales contract for a complete statement of warranty rights, remedies and limitation of liability.

**Furthermore, warranty does not apply to:**

- Damages or problems resulting from misuse, abuse, accident, alteration or incorrect electrical current or voltage.
- Any product tampered-with or damaged warranty seal or serial number label.
- Any product without a warranty or serial number label.
- Batteries and any consumable items delivered with or in the equipment.

### **Warnings and Safety Instructions**

#### **CAUTION**

To prevent risks of electric shock, this unit must only be opened by qualified service personnel.

Power off and disconnect the power supply cable before opening the unit.

#### **WARNING**

To prevent fire or shock hazard, do not expose the unit to rain or moisture.

Use of this product is for personal use only. Copying CDs or loading music, video, or picture files for sale or other business purposes is or may be a violation of copyright law. Copyrighted materials, works of art, and/or presentations may require authorization to be fully or partially recorded. Please be aware of all such applicable laws concerning the recording and use of such for your country and jurisdiction.

### **FCC Warning Statement**

#### **FCC Compliance**

This equipment has been tested and found to comply with limits for a Class B digital device, pursuant to Part 15 of the FCC Rules. These limits are designed to provide reasonable protection against harmful interference in a residential installation. This equipment generates, uses and can radiate radio frequency energy and, if not installed and used in accordance with instructions, may cause harmful interference to radio communications. However, there is no guarantee that interference will not occur in a particular installation. If this equipment does cause harmful interference to radio or television reception, which can be determined by turning the equipment off and on, the user is encouraged to try to correct the interference by one or more of the following measures:

- Reorient or relocate the receiving antenna.
- Increase the separation between the equipment and receiver.
- Connect the equipment into an outlet on a circuit different from that to which the receiver is connected.
- Consult the dealer or an experienced radio/TV technician for help.

**Note:** During file transfer or in the PC mode, if the End User Terminal (EUT) or computer suddenly freezes or does not respond, it may be due to the electrostatic phenomenon. Please follow the procedures below to recover the operation:

Unplug the USB cable from the End User Terminal (EUT)

Close the software application in the computer (or re-boot the computer if necessary)

Re-connect the USB cable to the End User Terminal (EUT)

**CAUTION:** Modifications not authorized by the manufacturer may void users authority to operate this device.

**FCC Part 15** - Operation is subject to the following two conditions:

1. This device may not cause harmful interference;
2. This device must accept any interference received including interference that may cause undesired operation.

### **Copyright Notice**

**Copyright ARCHOS © 2003 All rights reserved.**

This document may not, in whole or part, be copied, photocopied, reproduced, translated or reduced to any electronic medium or machine-readable form without prior consent, in writing, from ARCHOS. All brands and products names are registered trademarks and the property of their respective owners. Specifications are subject to change without notification. Errors and omissions accepted. Images and illustrations may not always match contents. Copyright © ARCHOS. All rights reserved.

**Disclaimer of warranty:** to the extent allowed by applicable law, representations and warranties of non-infringement of copyrights or other intellectual property rights resulting from the use of the product under conditions other than as here above specified, are hereby excluded.

## Technical Specifications

<b>Storage capacity:</b>	<b>Model 20:</b> 20 GB hard drive <b>Series 100:</b> depending on model number. JBM 120: 20 GB hard drive, AV140: 40GB hard drive
<b>Interface to Computer:</b>	<b>Model 20:</b> USB 1.1 standard (optional USB 2.0 or FireWire interface cable) <b>Series 100:</b> . USB 2.0 standard (optional FireWire interface cable) USB 1.1 compatible
<b>Music Playback &amp; Recording:</b>	MP3 decoding 30 to 320 kbits/s , CBR & VBR. MP3 real-time encoding 30 to 160 kbits/s VBR.
<b>Photo Viewing:</b>	<b>Model 20:</b> JPEG and BMP (4, 8, 24 bit) files, any size. JPEG preview 4 images <b>Series 100:</b> JPEG and BMP (4, 8, 24 bit), any size. JPEG preview 4 or 9 images (16 on television)
<b>Video Playback:</b>	<b>Model 20:</b> up to 352x288 pixels @ 30 frames/s MPEG-4 Simple Profile compliant .AVI (DivX* 4.0 & 5.0), MP3 stereo sound tracks, VHS picture quality <b>Series 100:</b> Up to 640x304 @ 30 frames/sec (NTSC) or up to 640x368 @ 25 frames/sec (PAL) [Up to 640 x 480 resolution at lower frame rates] MPEG-4 Simple Profile compliant .AVI (DivX* 4.0 & 5.0 & XviD) MP3 stereo sound tracks, near DVD picture quality.
<b>Display:</b>	Built-in 1.5" LCD 237x234 pixels
<b>Audio Input:</b>	Stereo analog mini jack and built-in microphone. Digital Line-In (SPDIF) via stereo line-in (not optical SPDIF)
<b>Audio Output:</b>	Stereo analog Line-OUT/earphone mini jack. Digital Line-Out (SPDIF) via stereo line-in (not optical SPDIF)
<b>Video Output:</b>	AV mini jack, audio & composite video (for television), NTSC or PAL TV standard.
<b>Expansion Port:</b>	Optional modules (Memory card readers, Camera, Digital Video Recorder, FM remote control, Firewire and USB 2.0 interface cables)
<b>Playback Autonomy:</b>	MP3 playback: up to 8 hours Video playback (on LCD): up to 3 ½ hours
<b>Scalability:</b>	downloadable firmware updates from Internet ( <a href="http://www.archos.com">www.archos.com</a> ).
<b>Power:</b>	Non replaceable internal Lithium-ion battery pack, external AC/DC Adapter.
<b>Dimensions:</b>	110 x 79 x 29 mm (4.3" x 3.1" x 1.1")
<b>Weight:</b>	290g (10.2 oz)
<b>Operating Temperature:</b>	5 °C to 35 °C, storage temperature: -20 °C to 45 °C
<b>PC System Requirements:</b>	Pentium 233 MHz or higher. Windows 98SE, ME, 2000, XP (Home and Professional). 64 MB RAM.
<b>Macintosh System Requirements:</b>	<b>Model 20:</b> OS 8.6 or higher. iMac, G3 or higher. USB Manager version 1.2 <b>Series 100:</b> MacOS 9.2 or X, iMac, G3 or higher. USB 1.1 speed only
<b>Package Includes:</b>	Jukebox Multimedia, USB cable, AC/DC adapter, stereo headphones, combination audio/video output cable, Scart adapter (European models), carrying pouch, MusicMatch™ software and drivers on CD, Quick Start Guide in 6 languages.

\*DivX is a trademark of DivXNetworks, Inc.

## Product Introduction

Dear Customer,

This User Guide is an expansion of the Quick Start Guide that you received with your product. This guide will show you in a more detailed way some of the more intricate functions of the Jukebox Multimedia. Our engineers have packed this product with many functions and capabilities. The better you know how to use it, the more enjoyment you will get from it. Remember, with the Jukebox Multimedia, you can...

- Play MPEG-4 movies to a television or video projector
- View JPEG images
- Listen to MP3 files
- Use it as a voice recorder
- Record MP3 music directly from your hi-fi without a computer
- Store MP3, MP4, JPEG or any type of data file
- Create music Playlists
- Create JPEG slide shows with background music
- Add a variety of options such as a camera, video recorder, FM radio/remote control, and others.

We hope you receive years of enjoyment from your Jukebox Multimedia. We thank you for purchasing this product. If there is something you think we should improve upon, please don't hesitate to write to us and let us know. We are always interested in improving our products to suite our customers needs.

Wishing you the best music listening experience,

The team at ARCHOS

PS. Don't forget to check our website periodically for new Jukebox multimedia add-ons as well as software updates that you can download.

# 1 Starting up the Jukebox Multimedia

Refer to the Quick Start Guide for basic information. Please also check the ARCHOS website to see if a more recent version of the Operating System (OS) is available. This can be freely downloaded.

## 1.1 Battery Saving Features



There are two settings which can help you save battery power. These are the Auto Power Off setting and the Auto Screen Off setting. To get to the Settings screen, Click [F1] Setup, then scroll down to [Settings] and click Play. Then scroll down to find the two settings shown to the left. Using these functions will help to give you a longer usage time between charges. Hard drive accessing and the LCD screen take up most of the battery energy. Note also that when the Jukebox is connected to a computer, it will consume more energy than usual. Thus, you should always use the AC adapter when connected.

### **Auto Power Off (Power Off t.)**

If there are no user actions, music playing, or recording, then the Jukebox will shut itself off automatically after the specified amount of time. The left most position corresponds to 1 minute. Each unit to the right is 1 more minute. After 9 minutes, the final position is *NEVER*, which means the Jukebox will not shut off by itself.

### **Auto Screen Off (Backlight t.)**

This timer starts counting from the moment the user last pressed a button. After the specified amount of time, the screen will shut off. The Jukebox will continue to play or record, shutting off only the screen display. The left most position corresponds to 10 seconds. Each unit to the right is 10 more seconds. After 110 seconds, the final position is *NEVER*, which means that the Jukebox will never shut off the screen.

## 1.2 Charging the Batteries

Use ONLY an Archos charger/adapter that is specified for the Jukebox Multimedia. Other changers or adapters may damage the Jukebox. The batteries will charge automatically when the AC adapter/charger is plugged in. You should charge the Jukebox for three hours (without use) or five hours (using it while charging) to get a full charge. Once charged, you can get up to 8 hours\* of MP3 music playback time and up to 3 ½ hours\* of AVI video playback time (with builtin screen). The Jukebox is made with integrated batteries which are designed to last for the life of the Jukebox. This means that you will not have to change them. If, in the exceptional case, the batteries need changing, this should only be done by an Archos technician.

## 1.3 Caring for the Jukebox Multimedia

The Jukebox Multimedia is an electronic product that needs to be treated with care.

- Do not subject it to shock
- Do not subject it to heat. Be careful that the surface it is on, is a flat clear surface. Placing the Jukebox on a pillow, blanket, or carpet will restrict the necessary ventilation that it needs. This increase in operating temperature may cause damage to the device.
- Keep the Jukebox far away from water and excessively humid areas
- Keep the Jukebox away from high electromagnetic fields
- Keep any connected cords to the Jukebox neatly arranged. This light product could fall if a chord is accidentally pulled by a child.
- Keep it plugged into the AC adapter/charge while connected to your computer

\* depending on how much manipulation the user does while the Jukebox is playing

## 2 Ports, Connections, and Buttons

Refer to the Quick Start Guide for basic information

### 2.1 SPDIF Digital Audio

---

The SPDIF digital audio is a wire based protocol, it is not optical. To record or play via the SPDIF digital audio connection, you will use the cable delivered with the Jukebox which has RCA type connectors (red, white, and yellow). Thus, you should locate SPDIF RCA female type jacks on the back of your Hifi system. Place the mini-jack end of the cable in the Jukebox's LINE-IN jack. The yellow RCA connector works as both the IN and the OUT. You will have to swap this from the SPDIF IN and OUT on your hi-fi stereo system as needed.

### 2.2 The Expansion Port

---

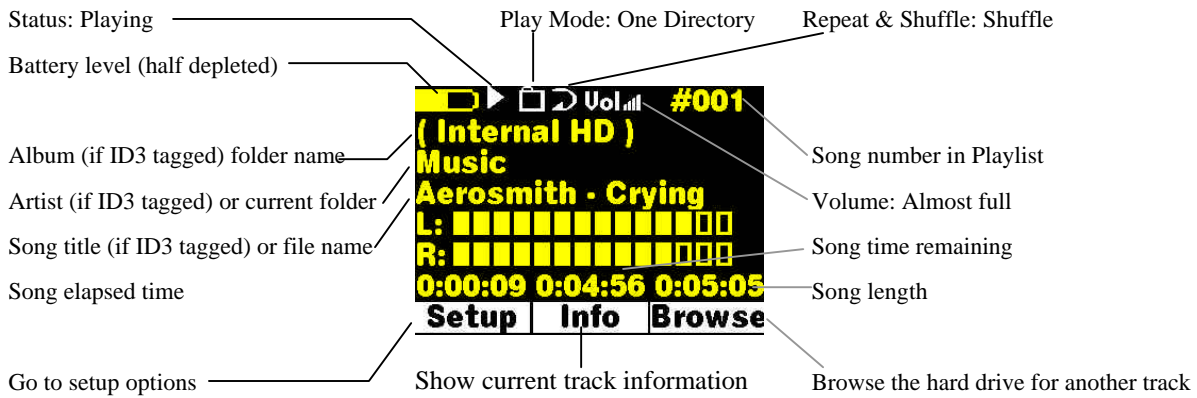
Remember that when you connect or disconnect one of the ARCHOS add-ons, such as the camera, a memory card reader, or cable interface, you must do so while the Jukebox is off. See the end of this manual for add-on products and descriptions.

### 3 Playing MP3 Music

Refer to the Quick Start Guide for basic information

#### 3.1 The Display

Shown below is the screen when a track (song) is being played. The top line of the Jukebox Multimedia indicates, in order, the Battery level, Play Status, Play Mode, Repeat, Volume, and Song Number/Time.



Play Status	Play Mode	Repeat
Stopped	Play all tracks in the current directory	(no icon) Play once
Playing a track	(no icon) Play all tracks on Jukebox	Repeat playing
Current track is paused	Play a single track then stop	Shuffle (Random) track selection
Recording a track	User can queue the next track to be played (1)	
	Jukebox plays first 15 seconds of each track (2)	
	Jukebox is currently playing from a Playlist	

(1) While the current song is playing, click on F3 Browse, find the next song you want to play, then click Play. This is your queued song. You can only queue one song. See the Playlist section to prepare multiple songs to play. Once the current track is finished playing, your queued track will be played. If you do not queue another track at this time, the Jukebox will play the next song in the directory.

(2) Each track in the directory is played for 15 seconds. This allows a quick sample of each song. If you want to play the whole song, click on the Play button during those first 15 seconds. The Jukebox will then revert to single directory mode and play the rest of the songs in the directory without scanning.

Examples:

	Play, Playlist, Repeat – The song currently being played is from a Playlist and it is the fourth song of that Playlist. The songs of the Playlist will repeat after the last song has been played.
	Paused, Single, Normal - The Jukebox is currently paused during the playing of a single song. When this song is finished playing, the Jukebox will return to the directory view. The time is currently 12: 45 am. The clock is a 24 hour type.
	Stopped, Queue, Normal – The Jukebox is currently playing a song and is in Queue mode. The current song playing is the 5 <sup>th</sup> song in it's directory.

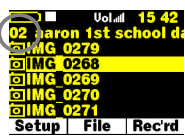


### 3.2 ID3 Tags



ID3 Tags are information about the recording which is located inside of an MP3 music file. When someone creates an MP3 music file, he or she has the option of adding information to it. This information includes, among other things, the Album name, the name of the Artist, and the title of the song. If these data are present, the Jukebox will display them on the screen when it plays the file. If they are not present, then the Jukebox will display in order, the name of the parent folder, the name of the current folder, and then the name of the file. As of the writing of this manually, there are two versions of ID3 tags that are firmly established standards, ID3 version 1 and ID3 version 2. Your Jukebox will read both sets of tags, and display the information. If both sets of tags have information, the data from the ID3 version 2 tag will be used. Other tag information may include composer, year, genre of music, album cover etc. This tag information is not currently used by the Jukebox multimedia. In the example display, section 3.1 above, this file did not include any ID3 tag information. It was located in a folder called Music on the root level of the Jukebox.

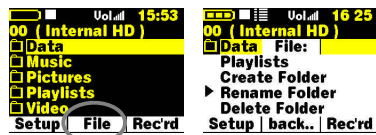
### 3.3 Navigation



The navigation of folders (directories) is in a hierarchical format just like on your computer. As a matter of fact, the Jukebox comes formatted as a FAT32 hard drive, just like Windows based computers. The number on the top left of the screen, just below the battery indicator displays the depth you currently are in, in the directory structure. Level 00 is the root level which shows all of your sub folders.

To enter a folder, just highlight it with the UP and DOWN buttons, then click on the RIGHT button. You will then enter into that directory. You will notice that the directory level indicator will increase by one. This indicates that you are one level deeper into the directory structure. Click on LEFT to leave the current directory and go up one level to the parent directory. The OFF button can be used as a type of “escape” like the ESC key on your computer to cancel an operation and return to the previous screen.

### 3.4 Creating Directories, Deleting files, Renaming files, Viewing File Info



You can most easily do these things by connecting the Jukebox to your computer and using your file manager program. However, if you would like to do this without the aid of your computer, click on the [F2] File button then choose which operation you would like to perform.

### 3.5 Entering Text



There are multiple instances where the Jukebox will ask you to enter text. For example, when renaming a file, creating a folder, or naming a Playlist or recording. The new text (name) will appear above the grid of letters. Use the buttons to navigate the letters then click on PLAY to accept the letter. Click on F2 to back space. Hold down on F2 to delete the entire line. There will be a default name given when you enter the text mode. In the example to the left, the user is being asked to name a recording which has a default name of REC0000. You can keep this default name or change it. The space character is found to the left of a and above the h. Click on F3 to get upper case characters and numbers. Click on F1 when you are satisfied with your text entry.

### 3.6 Creating and Playing Playlists



A Playlist is a list of songs, pictures, or a combination that the Jukebox will automatically play one after the other. The Jukebox can load one Playlist at a time into its internal memory. You can create new Playlists, add or delete items from a Playlist, or Save a Playlist as a file (file type .m3u) to be used another time. There is no limit to the number of Playlists you can save on the Jukebox hard drive. Playlists are indicated by a special list icon as shown to the left. To play a Playlist, you simply scroll to the Playlist, such as 'Jazz Playlist' shown to the left, and click on Play. The list of songs will be loaded into the internal memory of the Jukebox and then will be played one by one. You can open a Playlist file (*Playlistname.m3u*) on your computer with a text editor such as Notepad, and you will see that it is merely a list of files to be played. If you delete a Playlist from your Jukebox, you are only deleting the list and not the music itself.

#### Creating a Playlist

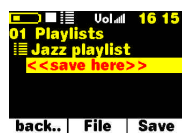


To create a Playlist, you start by adding songs to the empty Playlist. When you turn on the Jukebox, the Playlist is empty. You can verify that it is empty by taking a look at the current contents of the Playlist. Click on [F2] File, then click Play when the cursor ► is in front of the Playlists option. You will then see the contents of your current Playlist. To see the commands for a Playlist, click on [F2] File.



To add a song or a folder of songs to the Playlist, you simply hold down on the Play button for three seconds when your cursor is highlighting any song or folder. In the example to the left, holding down on Play will add the song *Sailing* to the Playlist. At this point, the song name will change to a different color indicating that it is in the current Playlist. If you hold down the Play button on a folder, you will see the Jukebox add all the songs from that folder.

Each song title in that folder will now have a new font color. If you look in your Playlist now, you will see all of the songs that you have added. The Playlist has a maximum of 5000 items that can be added. You can even add songs to your current Playlist while the Playlist is playing. Just click on [F3] Browse while listening to your songs and add songs as normal (hold down on Play for 3 seconds on the song name or folder). Click once on the Off button to get back to the music playing view.



Once you have added the desired songs to your Playlist, you can either immediately play your Playlist (the first option), save your Playlist for a permanent copy, clear the contents of the Playlist, or shuffle the Playlist into a random order. You can also click on [F3] Track which will allow you to move, delete, or add a music track. When saving a Playlist, the Jukebox will allow you to choose your destination folder. Locate the folder you want to save your Playlist in, and then scroll down until you highlight the <<save here>> message. Click on Save and your Playlist will be permanently saved in that folder.

#### Using a Playlist from MusicMatch™



If you have used the included MusicMatch™ program to create Playlists on your computer, you may be able to use these Playlists on your Jukebox Multimedia. If you created your Playlists from MP3 files that are on the Jukebox, then you can simply transfer these Playlists to the Jukebox Multimedia. That is, the Jukebox must have been connected to the computer and the files in your Playlist must be files that are on the Jukebox Multimedia's hard drive. If you copy a Playlist which refers to MP3 files on your computer's hard drive, c: for example, then the Jukebox naturally will not have that file locally on its hard drive to play. Connect your Jukebox Multimedia to your computer and then copy (or drag and drop) the .m3u Playlist files using Explorer. You will find all your MusicMatch saved Playlists in the directory C:\Program Files\MUSICMATCH Jukebox\Playlist\Default\. Copy the desired Playlist or Playlists to your directory of choice (we suggest the folder "Playlists") on the Jukebox Multimedia. Once disconnected from the computer, locate the Playlist file and click on Play.

#### Using a Playlist from iTunes™

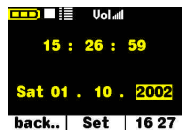
For Macintosh users who would like to create iTunes™ Playlists on the Jukebox Multimedia, a special plug-in has been developed. You will find it on the included CD-ROM in a folder called itunes plug-in. In this folder you will find a plug-in for Mac OS 9.x and another one for Mac OS X. You will also find a .JPG image illustrating where you need to copy the plug-in to. Once this is done, iTunes will

recognize the Jukebox as a Device. When you create your Playlists with iTunes, it will now save these Playlists to the root directory of your Jukebox Multimedia. Disconnect the Jukebox from your computer and then simply click Play on the Playlist that iTunes had created for you.

## 4 Settings

Refer to the Quick Start Guide for basic information.

### 4.1 Setting the Time of Day Clock



To set the clock, click first on F1 Setup, then click on F3 (the time). You will be sent to the clock adjust screen as shown to the left. Use the Up and Down to change a parameter's value, and then Left and Right move to different parameters. Click F2 when finished.

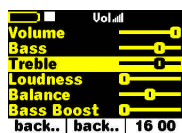
### 4.2 Play Mode, Repeat, and Shuffle



Depending on your preferences, you can have your MP3 music played in different ways. For example, you can have it randomly play songs from all the songs on your Jukebox or have it repeat the songs in a given directory. Look at the table in section 3.1 to see the different possibilities. Use the Play Mode submenu and the Repeat & Shuffle submenu to set these options. When you find the setting you want, click on PLAY and a circle will appear in front of the option indicating that it is the currently selected option.

The Startup Resume option, as shown in the screen to the left, is used to create a type of book mark to the place you where in the directory structure when you last played a file. If set to On, each time you turn on your Jukebox, you will automatically be sent to the directory and file that was last played.

### 4.3 Sound Settings



While listening to your music, you can adjust the sound settings to your personal preference. Click on [F1] Setup, then with [Sound] highlighted, click on Play to enter the Sound Settings submenu. Using the UP and DOWN buttons, highlight the parameter to change and then use the LEFT and RIGHT buttons to change it. The effect takes place immediately. Click on F1 Back, two times to return to the screen you were originally at.

Parameter	Description
Volume	32 levels of volume.
Bass	10 levels. Increases the low frequencies.
Treble	10 levels. Increases the high frequencies.
Loudness	10 levels. Increases the low mid frequencies
Balance	10 levels to the right or left
Bass Boost	10 levels. Increases the very low frequencies
Flat	Readjusts all settings to a flat frequency response
Pitch	16 levels lower or higher. Changes the speed of the music.

### 4.4 System Settings



To enter the system settings submenu, click on [F1] Setup, scroll down to [Settings], then click Play to enter it. The items marked with [ ] have secondary menus with a list of parameters. Highlight the parameter you want, then click on Play to accept it.

Parameter	Description
Video	Internal LCD, External TV. To display via the built-in LCD screen or to view the display via an external television. Use the included combination audio/video cable to connect the Jukebox to a television. Holding the ON button for three seconds will also alternate between these two options.
[TV Standard]	NTSC (USA), PAL (Europe). In order to properly view images or videos on an external TV, select one option to send the video signal compatible with your country's television system. Countries other than European or American will use one of these two systems.
LCD Bright	8 brightness levels for the built-in LCD.
Video X Pos.	30 levels. To displace images or videos on the television screen to the left or right.
Video Y Pos.	30 levels. To displace images or videos on the television screen to the Up or down.
Language:	The Jukebox Multimedia can be set to English (default), French, or German. Use the LEFT and RIGHT buttons to select your language of choice.
Power Off t.	Inactivity auto shutdown. See section 1.1 <i>Battery Saving Features</i>
Backlight t.	Backlight display time. See section 1.1 <i>Battery Saving Features</i>
Show all files	Off (default), On. Use the LEFT and RIGHT buttons to set it. If Off, the Jukebox will only display the file names of type .MP3 (music), .m3u (Playlists), .JPG (images), .BMP (images), and .AVI (videos) with their corresponding icons. If set to ON, the Jukebox will display the names of ALL the files on the hard drive (using a ? icon), even if they cannot be viewed or played, such as .txt or .pdf for example. <u>This setting is important when the Jukebox is used with the memory card reader add-ons.</u> Setting it to ON will allow the Jukebox to transfer all the files from the card media regardless of file type. If set to OFF, it will only read the above mentioned file types which it finds on the card media.
Hard Disk	Displays amount of free space on the hard drive in megabytes. Free Space / Total Space.
Firmware Version	Displays the version of the current Operating System (OS).
Update Firmware	Used to update the Jukebox Multimedia to a new version of the Operating System. See section 4.5 below on how to do this.

## 4.5 Updating the Jukebox Multimedia's Operating System (OS)

Archos periodically updates the Operating System (OS) and makes it available for free download on the ARCHOS web site ([www.archos.com](http://www.archos.com)). You should check to make sure that you are running the most recent version of the OS. Each time the Jukebox Multimedia starts up, the OS version is displayed on the screen (example: OS Version 1.1.6). Under the category Software on the Archos website, you will find the most recent version and its version number.

### **PC - Download the zipped file**

The file is in a zipped (compressed to allow the quickest possible download) format and should be downloaded to your computer locally. You must then unzip the file with an unzipping utility such as WinZip™. Once unzipped, you will find two files. One is the update install instructions & history file which explains what changes are in the new OS and the other is the OS itself, it is called AJBM.AJZ

### **Macintosh - Download the .ajz file**

For Macintosh users, you can download the AJBM.AJZ directly without having to worry about unzipping. You can find the update history text file of the Operating System on the Archos web site. It describes what the update has changed.

### **Copy to Jukebox and Update**



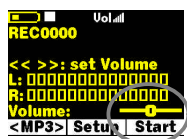
When updating your Operating System, you should keep your Jukebox powered from the AC charger/adaptor so that it will not shut down due to low batteries while you are performing the update. Connect your Jukebox to your computer (see section 9.1), and then copy the AJBM.AJZ file to the root directory of the Jukebox. The root directory is the top most level of the directory hierarchy. Just drag the .ajz file onto the Jukebox Hard drive in your file manager and it will place it in the top most directory. Once this file is copied, safely disconnect the Jukebox from the computer (see section 9.2). Next, click [F1] Setup, then click on Settings, and then scroll down to *Firmware Update* and click on it. The Jukebox will search for the .ajz file and will ask you to click [F1] Yes, to start the update. Follow the on-screen instructions. The Jukebox Multimedia will restart itself and you will see the new OS version display on the screen as it starts up.

## 5 Recording MP3 Music

Refer to the Quick Start Guide for basic information.

### 5.1 Recording

With the Jukebox Multimedia, you do not need a computer to create MP3 music and audio files. You can create MP3 files in three different ways. You can (1) Record from the built in microphone (voice recorder) (2) Record directly from an any analog audio source such as a stereo, portable stereo, radio, etc. via the Line-in jack or (3) Record directly from a digital stereo system that has the SPDIF standard output (RCA type, not optical).



To start a recording press on [F3] *Rec'rd.* you will be sent to a pre-recording screen. If something other than <MP3> appears above the [F1] button, click on F1 until <MP3> reappears. In this screen, you can adjust the input volume levels so as to get the best quality recording. Increase and decrease the input sensitivity by using the Right and Left buttons respectively. The gain control is from -3 db (far left) to +19 db (far right). Two clicks to the right for 0 db gain. If you are listening via the headphones, this is not a good measure of the recording level since the headphones can be regulated by the volume control on the headphone cord. If the last boxes in the Left (L) and Right (R) input level show a ! , that indicates that you have too loud of an input signal and you should reduce the input levels. It is not possible to separately adjust the left and right input levels.



Click on [F2] Setup to enter the recording setup screen. Here you can Set the name of the song, the artist, and the album. You can also select your recording source (*Analog* = line-in, *Microphone*, or *Digital* = SPDIF line-in), the quality of the recording (0-7) and the sampling rate. You do not have to change any of these settings. The defaults for Title, Artist, and Album respectively are REC0000, NEW ARTIST, NEW ALBUM. The REC number will be incremented each time you make another recording in the same directory. Click on [F3] to start your recording and then again on [F3] to stop your recording.

#### Microphone

The microphone is located between and slightly below the two led indicators. Make sure that you have selected *Microphone* as the input source in the pre-recording Setup screen.

#### Line-In (Analog)

You can connect any line-level audio source to the Line-in jack on the left side of the Jukebox Multimedia. Use the included stereo cable (Red/Right and White/Left) to connect to your Hifi system, VCR, or other audio source. To record from a source such as a portable CD player, you will need to buy a cable with mini-jack (3.5mm) male connectors on both sides. Be careful that the source audio is supplying a line level and not an amplified signal. An amplified signal will make for a terribly distorted recording. Make sure that you have selected *Line-In* as the input source in the pre-recording Setup screen. You can also use a high quality pre-amplified microphone, such as the one Archos sells as an option.

#### Digital SPDIF

The SPDIF digital audio on the Jukebox Multimedia is a wire based protocol, it is not by optical cable. To record or play via the SPDIF digital audio connection, you will use the cable delivered with the Jukebox. Place it in the LINE-IN jack. The yellow RCA connector works as both the IN and the OUT. You will have to swap this from the SPDIF IN and OUT on your hi-fi stereo system as needed.

#### Incremental Recording

While recording, you will notice the [F2] button, Next. This allows you to create incremental recordings. That is, the current recording stops and a new recording instantly begins. The next recording has an addition number appended to its name. Thus if you multiple incremental recordings, you might, for example, have files names of REC0002\_01, REC0002\_02, etc. This is good for recording old cassettes and old vinyl records. You can click on this button during the blank space between each song. That way, each song of the record will be one single MP3 file.

## 5.2 Bit Rate Table & Sample Rates

---

Average bit rates for Recording Quality Parameter*		
	Line-in (44.1 Khz Stereo Music)	Microphone (22.05 Khz voice)
Setting 0	78 kb/s	39 kb/s
Setting 1	81 kb/s	41 kb/s
Setting 2	87 kb/s	43 kb/s
Setting 3	95 kb/s	47 kb/s**
Setting 4	117 kb/s	60 kb/s
Setting 5	144 kb/s**	77 kb/s
Setting 6	165 kb/s	107 kb/s
Setting 7	166 kb/s	131 kb/s

*\* These figures are averages because the Jukebox Multimedia uses Variable Bit Rate (VBR) recording. Depending on the type of music or voice you record, the actual bit rates will vary slightly.*

*\*\* Suggested Settings*

Available Sampling Rates
48 kHz
44.1 kHz
32 kHz
24 kHz
22.05 kHz
16 kHz



## 6 Playing Video

Refer to the Quick Start Guide for basic information.

You can view video files either on the Jukebox Multimedia itself, or on a television (video projectors work nicely also). Use the included audio/video cable to connect the Jukebox Multimedia to your television. Place the mini-jack into the EAR/AV OUT on the Jukebox and the other connectors (Red, White, Yellow) respectively to Audio In Right, Audio In Left, and Video In on your television. If your television only has one audio input, you will have to use either the red or the white connector. Unfortunately, you will miss half of the stereo sound.



You must also set your television to the auxiliary video input, often called L1 just below channel 1. IN ORDER TO SEE THE IMAGE ON TV, HOLD DOWN THE ON BUTTON FOR THREE SECONDS and the image will switch from built-in LCD display to external TV display.

To play a video, you must have a properly encoded DivX™ or XviD video file. The Jukebox will not directly play files of type .mov, .mpg, .mpeg, nor .avi files created with codecs other than DivX™ or Xvid. You must use the included software on the CD to re-encode them into the proper DivX™ MP4 with an MP3 sound stream. Please see the following section on how to create MPEG 4 video files. The Jukebox Multimedia 10 and 20 are capable of playing MP4 Simple Profile .avi files of up to size 352 x 288. The more powerful Jukebox 120 and Archos Video AV140 can play sizes up to 640x368 at 25frames/second and sizes up to 640x480 with reduced frame rates.

Button	Action
Play/pause	Plays and pauses the video file
Right, hold Right	Advance to the next key frame, Forward fast (goes to pause state on release)
Left, hold Left	Go back to the previous key frame, fast Review (goes to pause state on release)
Up	Increase volume
Down	Decrease volume
F1, F2, F3	Displays file elapsed time, remaining time, and total time – click again to shut off
Hold ON	After 3 second hold, video signal changes from built-in LCD to AV Out and vice-versa
Off	Stops playing video file

## 7 Creating MPEG4 Video Files

Refer to the Quick Start Guide for basic information.

Please understand that video re-encoding is not always a simple one button process. Video segments that come from your digital camcorder or which are freely available on the web are encoded in different ways. If not already in the proper MPEG4 Simple Profile format, transforming these videos into this format readable by the Jukebox Multimedia requires special software tools. This is due to the relatively new nature of the ISO (International Standards Organization) MPEG4 video format. Unlike its predecessors MPEG1 and MPEG2, there are a number of levels in this format and thus not all MPEG4 video files will work on all MPEG4 players, and older MPEG1 and MPEG2 files must be re-encoded into this format. Although you may have a bit of a learning curve in the initial re-encoding of video files, once you have the process down, it is just a matter of letting your PC go to work and create video files for playing on your Jukebox Multimedia.



Another, much simpler method to create MPEG4 videos, is to use the Archos DVR 20 (for the Multimedia 10 and 20) or the Archos DVR 100 (for the Multimedia 120 and AV140) optional add-on as shown to the left. It is a device that clicks into the expansion port of the Jukebox and allows you to record a video source just like a video cassette recorder (VCR) by connecting a cable between your video source (TV/VCR) and the Jukebox Multimedia. This method does not require any re-encoding or that you install the below mentioned software.

**ATTENTION:** You should also take care to understand the copyright laws for your country and/or jurisdiction. Commercially produced video materials typically are copyright protected and your right to copy such material may be limited or restricted.

### 7.1 Installing the Software

---

If your video file is not an MPEG4 Simple Profile .avi file at the proper size, you will need to re-encode it using the following utilities. For the Jukebox Multimedia 10 & 20, you will need to create an AVI file that is MPEG4 Simple Profile with a resolution of 352x288 or smaller and a sound track that is stereo MP3. For the Jukebox Multimedia 120 and the AV140, you need to create an AVI file that is MPEG4 simple profile with a resolution can be up to 640x480 (depending on frame rate) and also a sound track in stereo MP3.

Please install the programs in the following order.

#### **DivX Codec**

This software will install the DivX™ **C**ompression/**D**ecompression into your PC. You should shut off any anti-virus programs when installing this or other codec software. This is not a program that is run by itself. Rather, it installs background software which allows your computer to do high quality video compression. This is the MPEG4 compressed video type that the Jukebox Multimedia knows how to play. You can find this codec software, as well as an application that allows you to play DivX™ videos, at the web site [www.divx.com](http://www.divx.com). There are three versions of the software found at their web site. You can choose the basic “free” version. This will give you the codec that you will need. For Macintosh users, DivX™ re-encoding software is just in its infancy. Currently DivXnetworks has released only a QuickTime™ decoder component, not an encoder.

#### **Virtual Dub**

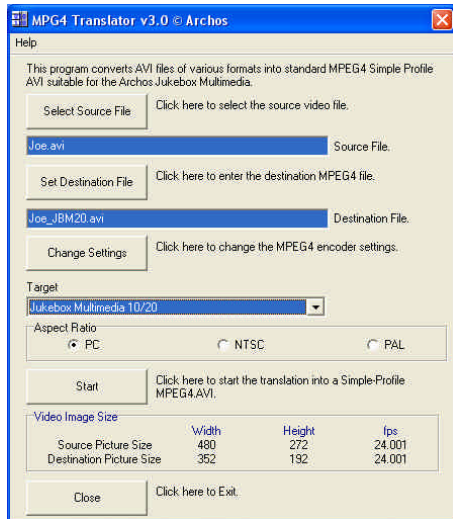
A utility for transcoding one video file into another. This is a general purpose transfer and cleanup utility which has many options allowing for even the most difficult video translations. When you install it from the CD-ROM, it will automatically unzip. It will prompt you to save it to C:\Program Files\VirtualDub. You should use this default directory location. Otherwise you will have to instruct the Mpeg4 translator program where to find it.

#### **Mpeg4 Translator**

This program, developed by Archos, is a “Front-end” for the Virtual Dub program. It has a simple interface which you use and it then tells Virtual Dub how to process the video file. It sets all the parameters for Virtual Dub specifically to create a video file in the right size

and format to be read by the Jukebox Multimedia 10, 20, 120 and the AV140. When you run it for the first time, the Mpeg4 Translator will need to locate the Virtual Dub program. If you did not install the virtual dub in the default location, you will have to show the program where Virtual Dub is.

## 7.2 Using Mpeg4 Translator



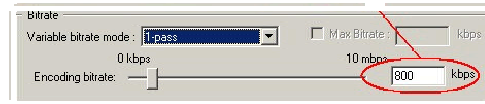
To the left you see the image of the main Mpeg4 Translator program. When you first run the program, if the DivX™ codec has not been installed yet, you will be notified. You should go and download the codec and install it on your computer. If the Virtual dub program has not been installed, you will also be notified, and you should also install it (either from the CD or the Virtual Dub website). If you have placed the Virtual Dub program in a folder other than the default, it will ask you to locate the file.

### Select Source & Destination Files

In the example to the left, a source file *Joe.avi* has been selected as the source video. You can see on the bottom of the window its original characteristics (width 480, height 272, frame rate 24). Next, you must then tell the program where to place (*Set Destination file*) the newly recorded version of the file (it will not erase the original).

### Change Settings

Following, you can change the parameters (*Change Settings*) of the DivX™ encoder to give adjust the level of quality of the final image.



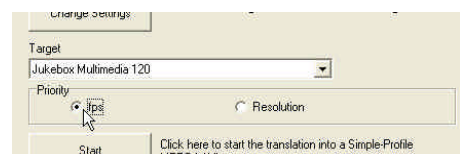
Like MP3 music, the higher the bit rate setting is made, the higher the quality of the music, or video in this case, that you will get. However, this will also take up more space on your disc drive. At a horizontal size of 640 for example, a setting of 800 kbits/sec will give you a nice looking image for viewing on a television. For near DVD quality, you can set it to about 1200 kbits/second.

### Target & Aspect Ratio (Jukebox 10 or 20)

Use the Target control to specify which type of Archos product you have. The program determines the best way to make it playable on the target device (Jukebox Multimedia 10 or 20 in the case above). The highest resolution that is playable on a Jukebox 10 or 20 is 352x288. The aspect ratio will change according to the type of output you plan on using. Choose the PAL button if you plan to connect your Jukebox Multimedia to a European television or the NTSC button for an American television. Choose NTSC if you plan to display it on the Jukebox only. You will notice that the width and height dimensions will change. This is normal and is required so that your image does not look squashed or stretched.

### Target & Priority (Jukebox 120 or AV140)

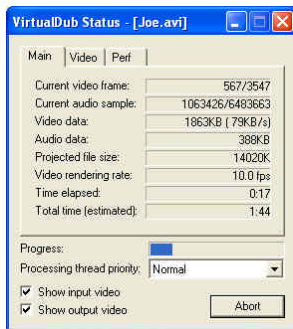
When you select a target of Jukebox Multimedia 120 or Archos Video AV140, you will see a *Priority* box appear. This control is to allow the user to select which feature of the video to be guarded. If for example you are re-encoding a video file that is 800x600 in resolution and 30 frames per second, this is beyond the maximum resolution that the Jukebox Multimedia can play. Thus, the Mpeg4 Translator program will have to decrease the resolution, the frame rate, or both. If you prefer that the resolution of the image is kept to the largest maximum, then click



on the Priority control *Resolution*. The best possible resolution will be kept and the frame rate will be decreased in order to accommodate that resolution. On the other hand, if you want to make sure you keep the highest possible frame rate, then click on the Priority control *fps*. The highest possible frame rate will be kept and the image resolution will be decreased to accommodate keeping the higher frame rate. In all cases, even if the original frame rate is 29 or 30 frames per second, the destination file will have a strict maximum of 25 frames per second.

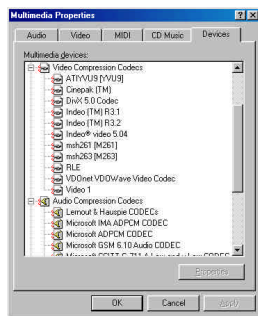
## Start

Click on *Start* and the program will call Virtual Dub to start processing the video. Depending on the power and speed of your computer, this could take real time (a 60 minute long video re-encoded in about 60 minutes) or much longer. As shown to the left, you will see the progress as it processes the video file. If the *Start* button is grayed out, it would be for one of two reasons. 1) The source file is not a true AVI file. Even if the file name ends with .avi, the internal file data determines if it is truly an AVI file. 2) The Virtual Dub program was not located when Mpeg4 Translator was started up. Close the program, restart it, and make sure you locate the Virtual Dub program.



## MP3 Sound Track

Remember, in order for the Jukebox Multimedia to be able to play the video, it must have an MP3 (MPEG layer 3) stereo sound track. If the source video file did not have an MP3 stereo sound track then your destination file will have no sound. Mpeg4 translator will signal this error condition. Obviously, it is pretty useless to have the video file without sound. What you will need in this case is an MP3 encoder available for Virtual Dub to use. There are MP3 encoders (usually packaged together as an encoder and decoder) available on the Web. If you choose to use the *LAME* codec, make sure that you have a version built with the ACM front-end. You can find other MP3 codecs on the web by using the search terms *ACM*, *MP3* and *CODEC* in your favorite web search engine. Once this codec is installed into your system, Mpeg4 Translator will be able to create final video files with MP3 sound, even if the source video file does not have an MP3 sound track.



If you are unsure what codecs (audio and/or video) your computer has, you can see the list, as shown to the left, by going to the following location. Click on Start > Control Panel > Multimedia > Devices and then you will see a list which includes the Video Codecs and the Audio Codecs which are installed in your system. Decoding of MPEG 2 video files is currently not supported by Mpeg4 Translator. These are usually .mpg or .mpeg format files, not the required AVI file. There are other tools found on the Internet that may be downloaded in order to help you with these file types. A good starting place is the web site [www.digitaldigest.com](http://www.digitaldigest.com).

## 8 Viewing Photos & Reading Memory Cards

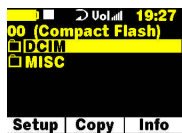
Refer to the Quick Start Guide for basic information.

### 8.1 Viewing Photos

The Jukebox Multimedia is able to display pictures of type JPEG (progressive JPEG not supported) and BMP (4,8, and 24 bit depth) on its built-in screen or on a television (Hold the ON button for 5 seconds to change between built-in screen and video out). To view a photo, simply highlight it and click on Play. The Jukebox Multimedia will readjust the picture size to fit the screen. However, it can only resize in certain steps. Thus your images may not always fill the entire LCD screen or television screen. To fill up the entire screen, pictures should be in multiples of resolution 600x800 (PAL TV output), 600x384 (NTSC TV output), or 660x468 (Internal LCD). Use the Preview mode [F1] while viewing pictures to show picture thumbnails and to go directly to the picture you want.

Button	Action
Right	Advance to the next picture in the current folder
Left	Go back to the previous picture in the current folder
Up	Rotate viewing counter-clockwise
Down	Rotate viewing clockwise
F1	Setup: Adjust settings or set preview mode to view 1, 4, or 9 (with 100 series) images at a time.
F2	No Bar: Show F1 and F3 options
F3	More: Show file information and Delete file if desired
Off	Go back to the browser view (view directories)

### 8.2 Transferring Photos from a Memory Card



Using one of the Memory Card Reader Add-ons from ARCHOS, you can read MMC\*, Memory Stick®, SmartMedia™, and CompactFlash™ (CF) type 1 and 2 cards, as well as CompactFlash™ Microdrives. Before connecting your Memory Card Reader to the Jukebox Multimedia, make sure the Jukebox is off. When connecting the Memory Card Reader, make sure that it “clicks” into place with both the left and right side making a firm connection. Once connected, turn on the Jukebox Multimedia. Now insert your memory card (face down for Compact Flash and SmartMedia cards). The Jukebox will recognize that you have inserted a card. It will then display the contents of the card.



With digital cameras, it is often the case that the camera stores its pictures in a subdirectory called DCIM (or even a subdirectory within that). Once you locate the images in the Compact Flash card, click on [F3] Copy, in order to choose your copy option.



You can copy a single file or all of the files of a directory to the hard drive. Select a copy option and then click on Play. You must now let the Jukebox know where you want to copy the image or images to. Once in the desired folder, scroll down past all the existing subfolders and files and you will see the option <<copy here>>. Click [F3] Copy, and your images will be copied to that folder. Once all the images are copied\*\*, can you pull out the card from the Memory Card Reader. The contents of the memory card will remain intact (will not be erased). You must shut off the Jukebox before unplugging the card reader from the Jukebox.

**ATTENTION:** If you have file types other than .jpg and .bmp on your memory card, such as .raw or .tif, to be transferred to the Jukebox, you must make sure that in the Setup : Settings menu, the option *Show all Files* is on. Scroll down toward the bottom of the list of parameters to find it. If it is off, the Jukebox will filter the incoming files and copy only the playable types (.mp3, .m3u, .bmp, .jpg, and .avi). It is not possible to transfer files in the other direction, that is, from the Jukebox multimedia to the memory card.

\*not available for Jukebox Multimedia 10 and 20

\*\* If a file already exists with the same name, the Jukebox will let you either overwrite the existing file or write the new file with an index number appended to it.

### 8.3 Creating a Slideshow

---

Picture Slideshows are created exactly like MP3 Playlists. While browsing through files, highlight the file you want and then hold down on the play button for three seconds. The filename will change color indicating that it has been added to the Playlist. You can continue to add JPEG images to the Playlist in this manner. The maximum number is 5000. A picture Playlist can be run, saved, cleared, or shuffled, just like an MP3 Playlist. You will find a Picture Pause setting under [F1] Setup then under *Playmode* which will allow you to set the number of seconds each image is displayed on the screen. As mentioned above, when playing the slideshow, the Jukebox Multimedia will readjust the picture size to fit the screen.

### 8.4 Creating Slideshows with Background Music

---

Slideshows can easily be set to music making the viewing experience much more enjoyable. You can also experiment with voice narration and create a slideshow with a running off screen voice. You simply put a combination of JPEG images and MP3 music into the Playlist and let it run. There are a few rules you have to remember in order for the music and images to play as you wish them to.

For example, here is how you might create an interesting slideshow of a sporting event. First, put all your pictures into a single folder, let's call that folder *parachuting* for example. Next, clear the Playlist so that you are sure there is nothing in it. Search through your MP3 music and find some music to go with the mood of the pictures. Hold down the Play button for three seconds to enter that MP3 into the Playlist as the first item. Next, go over to your *parachuting* folder and add it. The jukebox will load all the pictures from that folder into the Playlist automatically. Finally, set the length of time you want each picture to be on the screen. To do this, go to Setup [F3] : Play Mode and then scroll down to the bottom where you'll find the Picture Pause setting. Set it to five seconds. The faster the music, the quicker this setting should be since you will want to have a speed similar to the beat of the music. Now save your Playlist or play it immediately. The Music will start and the pictures will display for five seconds each. The slideshow will end after the last Playlist item is played. To create even longer slideshows, you can calculate the number of pictures a song might last for and insert a second MP3 track further down in the list of Pictures.

If you have made a recording for each image, say a voice narration, you can enter the narrations and images alternately. The image will stay on the screen for a minimum of what has been set in the Picture Pause setting, and a maximum of the length of the narration. For example, say you have 12 pictures (ex: pic1.jpg – pic12.jpg) and 12 individual voice recordings (ex: voice1.mp3 – voice12.jpg) that correspond to each picture. Put voice1.mp3 as the first item in the Playlist. Next, put pic1.jpg as the second Playlist item. Continue creating your Playlist this way so that you have alternately, a sound, a picture, a sound, a picture, etc. Set the Picture Pause setting to 10 seconds. Now, when you play the Playlist, the first voice recording will start as the first image is being displayed. If the voice recording is longer than 10 seconds (the Picture Pause time) the first image will continue to be displayed until the end of the current MP3 voice track. If the voice recording is shorter than the Picture Pause time, there will be silence until the Picture Pause time is reached and then the next MP3 track will start with the next picture being displayed.

The Jukebox Multimedia follows these rules when playing a combination of MP3s and JPEGs from a Playlist.

1. The Jukebox Multimedia plays each file in the Playlist in order. It never jumps ahead based on MP3 music length.
2. Picture Pause time is always respected (note 1). A picture will never be displayed for a shorter period of time than the setting Picture Pause indicates (regardless if an MP3 is finished playing).
3. An MP3 file will only start AFTER a previous MP3 is finished playing (note 2).

**Note 1)** The last picture in a series of pictures may have a duration longer than the Picture Pause setting because the JBM hasn't yet finished playing an MP3 file.

**Note 2)** The MP3 may however not start immediately after the previous MP3 is finished, due to the fact that pictures may still be displaying.

## 9 Connecting / Disconnecting from your Computer

### 9.1 Connecting the Jukebox Multimedia to your computer

Windows ME, 2000, XP (Home/professional) and Macintosh OS 9.2 and above do not require any special installation of software drivers. The Jukebox Multimedia will be recognized as a Mass Storage Device and mount automatically within a few seconds of being connected. For PCs running Windows operating systems, you will see a new drive letter, such as E: in *My Computer*. For Macintosh, you will see a new Hard Drive Icon on your desktop. Note also that when the Jukebox is connected to a computer, it will use more energy than usual. Your battery power will be consumed at a higher rate than normal. Thus, you should always use the AC adapter when connected.

#### Preferred Connection Order (all computers):

- 1) Use the power adapter to avoid that the Jukebox shuts off due to low power (battery consumption is greater when USB connected)
- 2) Plug USB cable into Jukebox Multimedia
- 3) Turn on the Jukebox Multimedia – wait until it completely boots up
- 4) Plug other end of cable into already running computer

#### Installing Drivers for Windows 98SE

When you first plug a Jukebox Multimedia into a computer running Window 98SE, it will recognize the hardware and ask to have drivers installed. Follow the instructions below.



1. Windows 98SE has recognized a new piece of hardware (the Jukebox Multimedia) and starts its wizard. Click on *Next*.



4. Windows will now go and copy from the CD to your computer's hard drive, all the files it needs to make the USB connection operational. Click on *Next* to tell Windows to install the driver.



2. Click on the button *Search for the best driver*. Open up the CD tray on your computer and insert the included Archos CD-ROM and then close the tray. Now click on *Next*.



5. Windows will indicate when it has finished copying the drivers. Click on *Finish*. Do not unplug the Jukebox from the computer.



3. Uncheck the box *Floppy disk drives* if it is checked, and then check the box *Specify a location*. Type in the drive letter of your CD player (usually D:) followed by: */Drivers* (for *JBM 120 & AV140*) or */Win98SE* (for *JBM 20*). Click on *Next* and Windows will then load the correct drivers.



Seen here as E: on a Windows XP machine and as F: on a Windows98SE machine



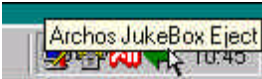
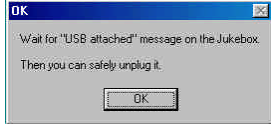
6. Once finished, the computer will automatically recognize the connected device (The Jukebox Multimedia). It will be seen as another drive in your file management system.

## 9.2 Disconnecting the Jukebox Multimedia from your Computer

**WARNING:** You must properly disconnect (unmount) your Jukebox from the computer **before** disconnecting the cable to avoid loss of data or freezing the computer and/or the Jukebox. **DO NOT SIMPLY PULL OUT THE USB CABLE AT ANY TIME.**

To unmount the Jukebox Multimedia hard drive, click on the safe remove icon (a green arrow) and follow the instructions. Wait until you get a message saying that you can safely unplug the device before disconnecting the USB cable. **Attention:** The operating system will not allow you to disconnect the Multimedia Jukebox if you have an open file from it in a running application. You will have to close all open Jukebox files in any running application.

**Warning:** Failure to safely unmount the hard drive and disconnect the Jukebox as explained may cause the operating system or Jukebox to freeze and/or lose data.

<p>1. Safe remove icon next to clock</p>  <p>Windows XP</p>  <p>Windows 98SE</p>	<p>2. Click to Eject (unmount) Jukebox Multimedia</p> 	<p>3. Click OK, verify the message, then unplug cable (computer or Jukebox side)</p> 
---	---	--



## 10 Troubleshooting

- In case of Electrostatic Discharge, the Jukebox may lose function. Just power off and on in order to restore.

If you have troubles getting your computer to recognize (mount) the Jukebox Multimedia as an external hard drive, check the following.

- If using Windows 98SE, you must first install the drivers from the included CD-ROM.
- If using a USB hub, try connecting without using the hub (some hubs are not powered and may not work with the Jukebox)
- If using a USB port in the front of your computer, try a USB port in the back. Front USB ports are often from non-powered hubs
- Do not connect to a USB port repeated through a keyboard
- Your USB driver software may be out of date. Find your USB chipset type by going to My Computer > Properties > Device Driver > Universal Serial Bus (USB) Controllers > Host Controller. You may have a chipset VIA, Intel, SIS or another. It is possible that you do not have the latest software drivers for these chipsets. For VIA updates, check out [www.viaarena.com](http://www.viaarena.com). For Intel check out [www.intel.com](http://www.intel.com). For SIS, cancel the driver and reinstall the Windows default USB controller drivers.
- If using a laptop computer and a docking station, try connecting without the docking station.
- If using the optional Archos USB 2.0 interface cable (JBM 10 & 20) to connect to your computer, first connect the interface cable to the Jukebox while it is off, start up the Jukebox, then once the Jukebox has finished booting up, connect the other end of the USB cable to a running computer. Starting up the Jukebox with it already connected via the USB 2.0 interface cable may the Jukebox to be unrecognized by the computer.
- Shut off and reboot the computer and the Jukebox and then try connecting again in the preferred order mentioned above.
- If Macintosh OS 10.1.x says it cannot mount the volume, you can use Disk Utility to reformat the Jukebox hard drive to type MS DOS FAT32. However, files will only be readable from a Macintosh, not a Windows machine.
- Make sure in your system BIOS the USB port is checked "ON" not "Off" Usually just on old machines.
- In Win98SE make sure in the Config.sys if there is a line "last drive =" that it be last drive = z: Usually just on old machines.

## 11 Using MusicMatch™ Software

### 11.1 Installing MusicMatch™

This software will help you to create Playlists, rename files, change ID 3 tag information (Artist, Album, Song title), and execute other useful MP3 related functions such as transforming your personal CDs into MP3 files for playing on the Jukebox.



Installing Music Match™ software on your PC quite simple. Just slip the included CD into your CR-ROM drive and the autorun system will present you with a list of installation options. You can then choose Music Match™ in the language of your choice. When installing MusicMatch™, it will ask you to enter a serial number. You will find the serial number printed on the paper pouch that the CD was packaged in. If for some reason the autorun does not present the menu when you place the CD into your computer, you can run the installation via the executable program (.exe) in the folder MUSICMATCH. You will see a number of languages offered. There is an extensive help section in MusicMatch to show you how to use it. Just click on the help button as show below once you have installed it.

#### **Portable Device**

There are some functions in MusicMatch which allow direct access to the Jukebox Multimedia. In order for the program to recognize the Jukebox as a “Device”, it requires a plug in. The plug-in is included in version 7.2 of Music Match and already installed. In order for MusicMatch to recognize the Jukebox Multimedia as a Portable Device, its volume name must be called “Jukebox”. If it is not, you can rename it by right-clicking on the Jukebox hard drive in Explorer, select Properties, and then change the volume name to “Jukebox”. Now you can export music tracks to the Jukebox Multimedia directly. Be careful as MusicMatch only places the MP3 files in the root directory. It is preferable to use your file management system to copy files to and from your computer’s hard drive and the Jukebox Multimedia’s hard drive.

### 11.2 Macintosh Users



For Macintosh users, Archos has created a plug-in for iTunes. You will find a folder on the installation CD containing the Archos iTunes plug-in which allows the iTunes program to recognize the Jukebox Multimedia as a device. There is a JPEG image next to the plug-in which will show you where to place the plug-in. Restart the iTunes program and you will see your Jukebox as a device.

## 12 Optional Add-ons\*

The following add-ons and accessories for the Jukebox Multimedia can be purchase at your local retailer or through the on-line web shop at [www.archos.com](http://www.archos.com).

\*Verify availability

### JBM Camera 100 for JBM 10, 20, 120 & AV 140



This camera turns your Jukebox Multimedia into a digital camera & camcorder. Save still images as .jpg files and movies as MP4 .avi files. Has 1.3 Megapixel captor and 2x Digital Zoom.

### JBM CompactFlash™ Reader for JBM 10, 20, 120 & AV 140



This adapter allows you to copy files from your CompactFlash™ cards onto the Jukebox Multimedia's hard drive. To use this adapter, simply connect it to the Jukebox when it is off, then once the Jukebox has been restarted, insert your CompactFlash™ card (face down) and after a couple of seconds, the Jukebox will recognize it and ask you if you would like to copy the contents or a single file. If you want to copy all file types from your CompactFlash™ memory card (.tiff, .raw, etc.), remember to set your Jukebox hardware settings to Show all files : On.

### JBM SmartMedia™ Reader for JBM 10, 20, 120 & AV 140



This adapter allows you to copy files from your SmartMedia™ cards onto the Jukebox Multimedia's hard drive. To use this adapter, simply connect it to the Jukebox when it is off, then once the Jukebox has been restarted, insert your SmartMedia™ card (face down) and after a couple of seconds, the Jukebox will recognize it and ask you if you would like to copy the contents or a single file. If you want to copy all file types from your SmartMedia™ memory card (.tiff, .raw, etc.), remember to set your Jukebox hardware settings to Show all files : On.

### JBM Memory Stick® and MultiMediaCard Reader for JBM 120 & AV 140



This adapter allows you to copy files from your MultiMediaCard and Memory Stick® cards onto the Jukebox Multimedia's hard drive. To use this adapter, simply connect it to the Jukebox when it is off, then once the Jukebox has been restarted, insert your memory card and after a couple of seconds, the Jukebox will recognize it and ask you if you would like to copy the contents or a single file. If you want to copy all file types from your MultiMediaCard or Memory Stick® (.tiff, .raw, etc.), remember to set your Jukebox hardware settings to Show all files : On.

### JBM DVR 20 Digital Video Recorder version for JBM 10 & 20

### JBM DVR 100 Digital Video Recorder version for JBM 120 & AV 140



This add-on allows you to record video directly from a video source (TV, video cassette recorder, etc.) into MP4 format on the Jukebox Multimedia's hard drive. Recordings are saved as MPEG4 .avi files. You have a choice to encode at High or Low frame rates and a choice of bitrates from 500kb/s to 2000 kb/s. Accepts either composite video input or S-video input. Audio is recorded via the regular line-in connection. Comes with infrared remote control and records in European or American TV standard.

### **JBM USB 2.0 Interface Cable** for JBM 10, 20



This specialized cable with a built-in USB 2.0 circuit inside allows you to connect your Jukebox Multimedia to any computer with a standard USB 2.0 port. USB 2.0 is a high speed connection that allows significantly faster copying of files to and from the Jukebox Multimedia.

### **JBM FireWire Interface Cable** for JBM 10, 20, 120 & AV 140



This specialized cable with a built-in FireWire circuit inside allows you to connect your Jukebox Multimedia to any computer with a standard FireWire port. The FireWire standard is a high speed connection that allows significantly faster copying of files to and from the Jukebox Multimedia. This connector is a 6 pin male connection. It will not work with iLink 4 pin ports found on some computers.

### **JBM FM radio and Remote Control** for JBM 10, 20, 120 & AV 140



This device is a remote control that clips onto the lapel of your jacket or shirt. Not only can you control the Jukebox Multimedia with it, but it has a built-in FM stereo tuner and microphone allowing you to listen to and record FM stereo music as well as record your voice like a voice recorder.

## **ACCESSORIES**

### **Stereo Microphone** for all ARCHOS Jukebox Products



This microphone with pre-amp is an excellent way to create high quality stereo recordings.

### **Traveler Case** for all ARCHOS Jukebox Products



This rugged and weather-resistant case was designed specifically to carry the Jukebox Multimedia and its accessories.

## 13 Technical Support

- Only the unit and its add-ons are under warranty, not the accessories
- If technical support determines that your product needs to be returned, please contact the place of purchase to have your product repaired or replaced (depending on problem type).
- There is an **FAQ – Frequently Asked Questions** section at the ARCHOS Website [www.archos.com](http://www.archos.com) that can help answer many of your questions.
- If you need technical help, you may contact ARCHOS directly in your own language via these phone numbers. For other countries, please use e-mail technical support.

### Telephone Support:

949-609-1400	(USA, Canada)	09-1745-6224	(Spain)
01 70 20 00 30	(France)	02-4827-1143	(Italy)
0207-949-0115	(UK)	02-050-405-10	(Netherlands)
069-6698-4714	(Germany)		

### E-mail Support:

[technical-support@archos.com](mailto:technical-support@archos.com) (*United States and Canada customers*) *English*

[support-technique@archos.com](mailto:support-technique@archos.com) (*Europe and rest of the planet*) *English and French*

[support.de@archos.com](mailto:support.de@archos.com) (*German Language*)

To respond to your e-mails efficiently, when sending one, please indicate the product name and question type in the Subject of the e-mail.

### For example:

**To:** [technical-support@archos.com](mailto:technical-support@archos.com)

**Subject:** Jukebox Multimedia 120 – USB connection to Macintosh

## Worldwide Offices

### United States & Canada

#### ARCHOS Technology

3, Goodyear – Unit A  
Irvine, CA 92618 USA  
Phone: 1 949-609-1400  
Fax: 1 949-609-1414

### Europe & Asia

#### ARCHOS S.A.

12, rue Ampère  
91430 Igny  
France  
Phone: +33 (0) 169 33 169 0  
Fax: +33 (0) 169 33 169 9

### United Kingdom

ARCHOS (UK) Limited  
Regus House  
Windmill Hill Business Park  
Whitehill Way  
Swindon  
Wiltshire SN5 6QR UK  
Phone: +44 (0) 1793 44 15 10  
Fax: +44 (0) 1793 44 16 10

### Germany

ARCHOS Germany GmbH  
Bredelaerstrasse 63  
40474 Düsseldorf  
Germany  
Tel: +49 211 1520 384  
Fax: +49 211 1520 349

**WWW.ARCHOS.COM**

## Free Manuals Download Website

<http://myh66.com>

<http://usermanuals.us>

<http://www.somanuals.com>

<http://www.4manuals.cc>

<http://www.manual-lib.com>

<http://www.404manual.com>

<http://www.luxmanual.com>

<http://aubethermostatmanual.com>

Golf course search by state

<http://golfingnear.com>

Email search by domain

<http://emailbydomain.com>

Auto manuals search

<http://auto.somanuals.com>

TV manuals search

<http://tv.somanuals.com>