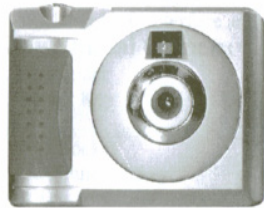


# OWNER'S MANUAL

## Digital camera



DC1512

## Contents

<b>Profile</b>	<b>1</b>
Overview	1
Package Contents	1
System Requirements	1
To Know Digital Camera	1
<b>Install Battery</b>	<b>1</b>
<b>Software Installation</b>	<b>2</b>
<b>Take Photos</b>	<b>3</b>
<b>Camera Functions Control</b>	<b>4</b>
LCD Diagram Directions	4
Function Control	5
Compression Ratio Selection	6
<b>Download Photos</b>	<b>7</b>
<b>PC Camera Functions</b>	<b>8</b>
Browse Live	8
Video Conference	9
<b>Appendix1: Specifications</b>	<b>10</b>
<b>Appendix2: Answers of frequent asked questions</b>	<b>11</b>

### Profile

#### Overview

Thank you for purchasing the digital camera. It not only can take photos but also has the built-in PC camera functions. This camera is equipped with a 16MB SDRAM; if you want the photos in the camera to be download to your computer, you are only required to connect the USB cable to your computer and your camera; It is also possible to use the built-in PC camera to hold a video conference via the internet, enabling you to have a face to face online conversation with others.

#### Product Package Contents

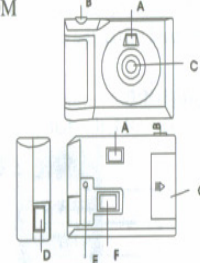
- Digital Camera
- Software CD
- User's Manual
- USB cable

#### System Requirements

- Microsoft win98/2000/ME/XP
- 125MB free hard disk space or above, 32MB or more RAM
- Color Monitor (Suggest at least 800\*600 24 bit or above)
- Available USB Interface and CD-ROM

#### To Know Digital Camera

- A. Viewfinder
- B. Shutter Key
- C. Lens
- D. USB Socket
- E. Start/Function key
- F. LCD
- G. Battery Box



#### Install Battery

1. Open the battery box;
2. Load the batteries correctly: when you load the batteries, please place two batteries according to the pole directions for batteries on the battery box;
3. Close the battery box cover.

**Note:** When you use the USB cable to connect the camera with a computer, is unnecessary to use the batteries because the camera use the power provided by the computer through the USB interface.

**Warning**

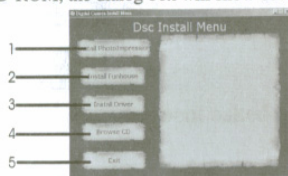
1. Don't open the battery box at will, and the power cut will cause the photos missing in the camera.
2. If you don't use the camera for a long time, please take out of the batteries for fear of the discharging or corrosion of the batteries.
3. Please don't put the battery into fire for fear of explosion to cause.
4. The lowest operation power: When the power of the batteries is less than 2.4V, the number counter will flash indicating power shortage. At that time, the camera can't work normally.
5. Normally the pictures in the camera can be stored about 48 hours, please download photos to your computer in time.

**Automatically enter the energy saving status**

If the camera is not used in 30s, the camera will auto enter the energy saving status.

**Software Installation**

Please put CD into CD-ROM, the dialog box will show out as follows:



1. Install PhotoImpression
2. Install Funhouse
3. Install driver
4. Browse Contents of CD-ROM
5. Exit

**Prompt:** For the details of PhotoImpression and Funhouse, please refer to separate instructions.

You are required to install application and driver respectively. During the installation period, you may select language according to your requirements. If the auto installation failed, you must install them manually.

1. Place the included CD into the CD-ROM driver
2. Enter E:\Setup.exe (If E is your CD-ROM letter)
3. Follow the directions of the installation wizard

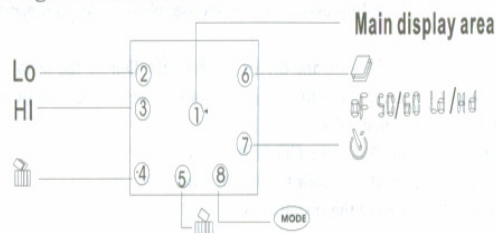
**Take photos**

1. Press function button to open the camera and "Hi" will show on LCD at the back of camera. The camera will give out two "beep" sounds indicating the camera having enter into working state.
2. Select required mode to take photo. (Please refer to the details of "Camera Function Operation")
3. Hold the camera steadily, and press the shutter button to take photos.
4. When you hear the buzzer beeps once, which indicates you have already taken a photo, and you can go on taking photos.
5. When the camera is fully loaded with photos, "0" will show on LCD, if you press shutter button again, the buzzer will give out continuous beeps sound for alarm.

**Prompt 1.** When taking photos, the lower sound indicates the failure of shooting

2. Please hold camera steadily when you are taking photos
3. The storage of light will effort the quality of picture

**Camera Functions Control LCD Diagram Directions**



Press the Select button to select the functions of the digital camera. The function diagram will show on the LCD display on the back of the digital camera. As follows:

- - Power off the camera.
- - Auto shoot
- - Continuous shoot.
- - Delete all photos in the memory
- - Delete the last photo
- **Mode** - Hi means CIF mode (100k pixels resolution). Lo means QCIF mode (25K pixels resolution).
- **"50" or "60"** - "50" or "60" to select the frequency of light used indoors. "50" means 50Hz and "60" means 60Hz.
- **"Hd" or "Ld"** - It is a photo compression ratio selection. "Hd" Means high compression and "Ld" means low compression. Higher compression ratio means you may store more photos.

**Camera Function Control**

**Power off the camera**

1. Press the Function button to select the "⏻" shown on the LCD display.
2. Press the Shutter button within 5 seconds to power off the camera.

**Auto-Shoot Mode**

1. Press the Function button to select "📷" shown on the LCD display.
2. Press the Shutter button within 5 seconds to activate the 10second timer. The digital camera will beep once every second.
3. After 10 seconds, the camera will beep twice indicate that the photos has been taken.

**Continuous Shoot Mode**

1. Press the Function button to select "📷" shown on the LCD display.
2. Press the Shutter button within 5 seconds to activate the continuous shooting mode and do not release the Shutter Button until you want to stop shooting. The camera will beep once for each photo taken till the Shutter button released or the memory is full.
3. Under the continuous shooting mode, the photos are taken in CIF&QCIF modes and saved as a video format.
4. Under the continuous mode photo shooting, the shooting may fail due to poor lighting. If so the continuous shooting will stop.

**Note:** The photos taken by continuous mode will be saved as an AVI format in the appointed place. You may open it directly from the photo download software.

**Delete All Photos**

1. Press the Function button to select the "🗑️" icon shown on the LCD display.
2. Press the Shutter button the photo counter will flash. Press the Shutter Button again within 5 seconds will delete all the photos stored in the memory.

**Delete Single Photo**

1. Press the Function button to select the "🗑️" icon shown on the LCD display.



2. Press the Shutter button once within 5 seconds to delete the last photo taken.

#### Photo Resolution Selection

**Note:** The resolution status will always show on the LCD display in small character.

1. Press Function button to select **Mode** character show on LCD
2. "Hi" means CIF mode 352\*288 Pixels, "Lo" means QCIF mode 176\*144 pixels
3. When you select Mode function, press the shutter button once to switch between the Hi mode or the Lo mode. The Hi mode will allow you to take 19 photos and the Lo mode will allow you to take 76 photos.

#### Fluorescent Lamp Frequency Selection

1. Please keep the frequency of camera in line with that of sunlight system
2. Generally speaking, there is 60Hz fluorescent lamp frequency used in United States, Asia. And 50Hz used in Japan and Europe. If there is a wrong selection of frequency, the photo or video shoot will have line bending.

#### Photo Compression Ratio Selection

There are "Hd" or "Ld" compression ratio selection for the photos stored in the memory. The higher the compression, the more photos you can take without having to download them to your PC. You can take up to 152 photos in the "Hd" mode when you have the low resolution (Lo) setting preset on your camera (see the photo resolution section above).

#### Photo Storage

The photo can be taken will vary referring to the resolution and compression ratio. The LCD display will always show the status of resolution and the rest of photo you may take unless the Select Button be pressed. The highest storage of photos will be

- 19 photos --- "Hi" resolution + "Ld" compression
- 76 photos --- "Lo" resolution + "Ld" compression
- 38 photos --- "Hi" resolution + "Hd" compression

-6-

The function button (From left to right):

**Download Photos:** Download photos from your camera

**Transfer Photos:** Transfer photos to your album

**Save:** Save photos


**Select all:** Select all photos in the dialog box

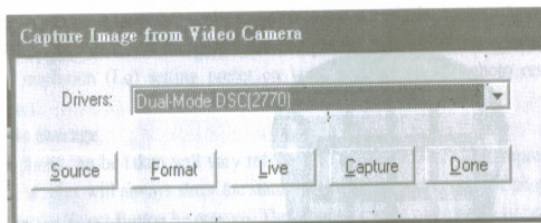
**Edit:** Edit the picture

3. Press [Download photo] button, the dialog box of downloading photos will pop up. You can download all or single photos according to your requirements.

#### PC Camera Functions.

##### Browse Live

Click **(Dual-Mode (2770))**, and there will pop-up a dialog box below the page; click [video camera] , and the dialog box [capture the images from video camera] will automatically pop-up. Please select **(Dual mode DSC (2770))** driver for this camera.



Functions Introduction

1. Sources-

-8-

152 photos --- "Lo" resolution + "Hd" compression

Press the Shutter Button to take one photo and the balance of the photos you have remaining in the memory (based on the mode you are set in) will be displayed as a digit on the LCD display. Each consecutive photo taken will reduce the counter by one digit. Each time you change the resolution, the number of photos remaining to be taken will change. If some photos were taken in a low resolution mode, then you switch to a higher resolution, the lower resolution photos will remain in low resolution.

#### DownLoad Photos

When your photos memory if fully engaged, you can transmit them into the computer for storage first. Use the included cable to connect the computer with your camera. You will hear a single beep to indicating that the connection is correct.

1. Use USB cable to connect the computer with your camera, and the buzzer will give out a beep sound indicating the connection is correct.
2. When you select download software "My DSC", this will open the main screen of "My DSC".



-7-

You can set the Brightness. Contrast---- device origin, device set and camera control; and please select (Default).

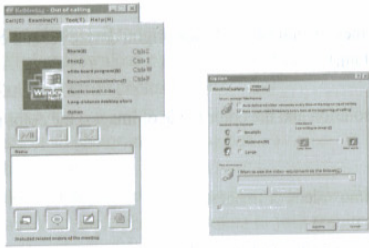
2. Format- You can adjust the resolution and the color mode of images; the color mode is suggest to select [RGB-24].
3. Live- You can browse real-time videos or images.
4. Capture- When you play live videos, click and select this function to acquire the single picture and store it in the album.
5. Done- Finish the PC Camera Functions

#### VideoConference

The camera can be used as a PC camera to conduct image transmission or hold online video conferences, you are only required to:

1. Use the USB cable to connect the camera and the USB interface of PC
2. Run the video conferences software Microsoft Netmeeting on your computer.
3. Input others' IP address in the address bar and dial
4. Select [Tool][Video][Accept] and [Transfer] options after others accepted your calling, you can hold Video conference

-9-



### Appendix 1: Specifications

Product Type: Digital camera  
 Electronic Coupling Element: CMOS Sensor 100K Pixels  
 Image Resolution: 352\*288Pixels(CIF) 176\*144Pixels(QCIF)  
 Memory Devices: Built-in 1\*16MB(SDRAM)  
 Memory Capacity: 19(CIF)(Hi) 76(QCIF)(Lo)  
 38(CIF) (Hi) 152(QCIF)(Lo)  
 Viewfinder: Built-in  
 Auto shoot: 10s  
 Continuous Shoot: 10 pieces per second  
 Shutter Speed: 1/6-1/15000 seconds  
 Shoot Mode: Single/Continuous Photograph/Automatic shoot/PC camera  
 Automatic Energy Saving: automatically enter the energy saving mode in 30s  
 Image Process: Automatic Exposure/Automatic White Balance  
 Working voltage: AAA 1.5 V \*2/USB 5V  
 Transmission Interface: USB Interface  
 Working Temperature: 0-40°C  
 Operation System: Windows98/2000/ME/XP

-10-

### Appendix 2: Answers of frequent asked questions

- 1).Q : I connect the camera to my computer before the installation of the driver then Finish the installation. But the camera can't work  
 A : 1.remove the camera 2.install the driver  
 3.restart the computer 4.connect your camera with the computer  
 If it still doesn't work, then take the follow procedures,  
 1.remove the camera 2.run Clear Registry  
 3.reinstall Driver 4.restart the computer  
 5.connect the camera to your computer again  
 2).Q : Relocate the device but it's not available  
 A : 1.remove the camera and run Clear Registry 2.reinstall the software  
 3.restart the computer 4.connect the camera with your computer  
 3).Q : The system ask you to insert the CD when you connect the camera to your computer  
 A : remove the camera, connect the camera to you computer again after the software installation  
 4).Q : restart the computer after finish the installation of the software .The page which enable you to set up the installation path will be displayed.  
 A : 1.remove the camera 2.reinstall the Driver  
 3.restart the computer 4.connect the camera to the computer  
 5).Q : After the connect the camera to your computer ,the pc camera function is ok. But the system reveal that there's no photo in the camera when your download the photos.  
 A : 1. Go to Device manager 2.select video device  
 3.select Dual-Mode DSC (2770), there should have a yellow! Before it.  
 4.remove this device 5.press right key, and choose relocate

-11-

- 6).Q : The camera can't work after the installation of software  
 A : 1.Go to device manager 2.Choose image device  
 3.press right key of the mouse and select relocate  
 7).Q : How to use photo impression down all the photos to photo impression  
 A : 1. Run the function of getting photos (please read photo impression operation instruction)  
 2. The page of download will be displayed  
 3. Download the photos  
 4.Choose the photos you want to download  
 5.Run the function of transferring the photos  
 8).Q : Is the camera applied to web?  
 A : yes. Connect your camera to your computer then run the relevant program, such as Netmeeting, Yahoo Message

**It is not noticed prior to design change**

-12-

030930

## Free Manuals Download Website

<http://myh66.com>

<http://usermanuals.us>

<http://www.somanuals.com>

<http://www.4manuals.cc>

<http://www.manual-lib.com>

<http://www.404manual.com>

<http://www.luxmanual.com>

<http://aubethermostatmanual.com>

Golf course search by state

<http://golfingnear.com>

Email search by domain

<http://emailbydomain.com>

Auto manuals search

<http://auto.somanuals.com>

TV manuals search

<http://tv.somanuals.com>