

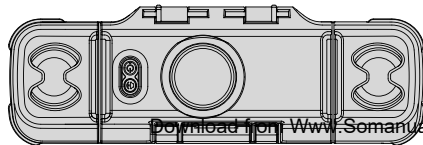
ATLANTIC[®]



ICEBAR

Instruction Manual

lovemyEGO.com



Download from www.Somanuals.com. All Manuals Search And Download.

Contents

Quick Start

P.5

Operation Guide

P.11

Troubleshooting

P.21

Care and Maintenance

P.25

Repair

P.37

Warranty

P.39

Specifications

P.47

Copyright

P.48

Download from www.Somanuals.com. All Manuals Search And Download.

Introduction

Thank you for purchasing the iceBar™. This product fits the iPod® nano 1st Gen & 2nd Gen 1GB/2GB/4GB/8GB.

Designed to enhance your iPod experience, the iceBar gives you uninterrupted music in any environment. Its design will protect your iPod from sand, water and dust during usage. A tough polycarbonate body with rubber bumpers ensures shockproof protection. If used properly, the iceBar will provide you with many hours of iPod enjoyment.

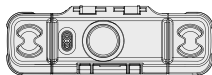


Copyright

Apple™ and iPod® are trademarks of Apple Computer, Inc. Registered in the U.S. and other countries.

Quick Start

Parts List



iceBar

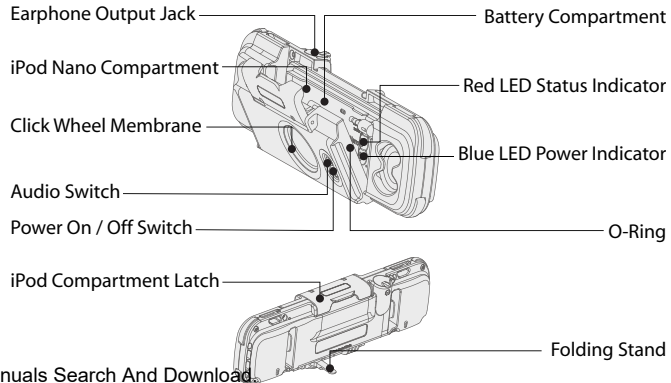


Hand Strap with buoy floating device



3 x AAA Alkaline Batteries

Download from [Www.Somanuals.com](http://www.Somanuals.com). All Manuals Search And Download



Safety Instructions

Please read and follow all safety and operating instructions before using this product. Retain this manual for future reference.

Please observe all warnings on the product and in the operating instructions.

Do not take product apart for any reason. There are no user serviceable parts inside, and any attempt at modifying or repairing your unit will void the warranty. (See Warranty & Return Policy on page 39).

Do not apply excessive force to the controls, or put heavy objects on top of the speaker. Keep sharp objects away from speakers.

Protect from direct sunlight and excessive heat. Avoid using the product for long periods of time in hot temperatures. High temperature may damage contents or shorten the life of sealing components. Do not store in closed cars, etc.

Make sure unit is dry before opening and removing or accessing iPod.

Although the product is waterproof, it is not designed for use underwater. Do not submerge underwater.

If water enters the iceBar to due to improper usage:

- Open the iPod nano compartment and remove batteries
- Drain water
- Dry interior with cloth
- Let the iceBar dry until mist and water droplets disappear.

Note: Failure to follow all safety instructions may void your warranty.

Safety Instructions (continued)

Avoid hearing damage - Permanent hearing loss may occur if earphones are used at a high volume. Set the volume to a safe level. You can adapt over time to a higher volume of sound that may sound normal but can be damaging to your hearing. If you experience ringing in your ears or muffled speech, stop listening and have your hearing checked. The louder the volume, the less time is required before your hearing could be affected.

Experts suggest the following to protect one's hearing:

- Limit the amount of time you use earphones at high volume.
- Avoid turning up the volume to block out noisy surroundings.
- Turn the volume down if you can't hear people speaking near you.

For information about how to set a maximum volume limit on your iPod, see the features guide for your iPod.

Safety Instructions (continued)

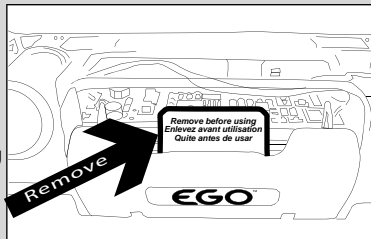
Using Earphones safely - Use of earphones while operating a vehicle is not recommended and is illegal in some areas. Be careful while driving. Cease from using iPod if you find it disruptive while operating any type of vehicle or performing any other activity that requires your full attention.

Operation Guide

1

Before use, please REMOVE SHIPPING RETAINER.

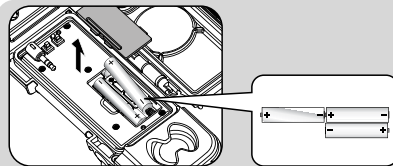
This piece must first be removed before the iceBar can be closed properly. Failure to remove retainer will result in water entering inside of the iceBar and possibly damaging your iPod.



Download from Www.Somanuals.com. All Manuals Search And Download.

2

Install Batteries

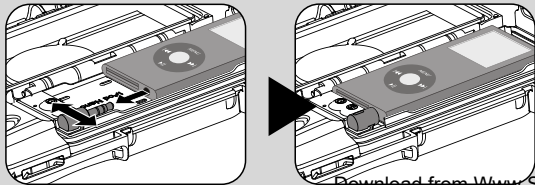


- * New Alkaline batteries are recommended
- * Do not mix alkaline, standard (carbon-zinc) or rechargeable (nickel-cadmium) batteries
- * Do not mix charged and partially charged batteries
- * See battery safety rules on page 31.

3

1. Align the audio port in your nano with the stereo jack in the iceBar housing.
2. Gently snap the nano into the audio jack. **VERIFY** the nano is **COMPLETELY** plugged into the audio jack.

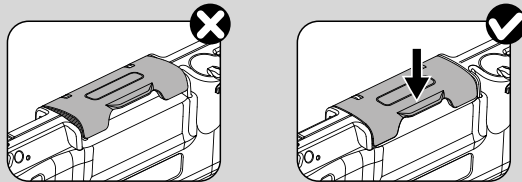
* The iceBar is specially designed for iPod nano 1st/2nd Generation. Forcing a different player into the compartment will cause damage and void the warranty.



Download from www.Somanuals.com. All Manuals Search And Download.

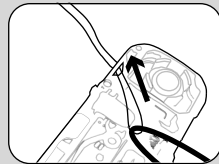
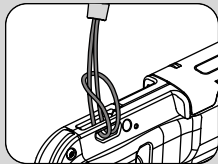
4

Close the iPod compartment latch completely .



5

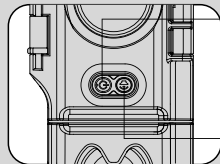
Attach the hand strap with buoy floating device to your iceBar.



Attach the hand strap with buoy floating device to your iceBar. If it is difficult to get the buoy strap through strap hole in the iceBar, we suggest using a piece of dental floss or other thin string to help with this step. Use the thin string to wrap around buoy strap and pull through strap hole, as shown above right.

6

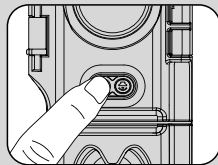
Controlling your iceBar



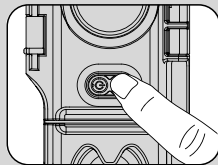
Power On / Off Switch

Audio Switch

Download from Www.Somanuals.com. All Manuals Search And Download.



Press the power On / Off switch. When the blue LED lights up this will signify that the soundcase is ready for use. Press the power on/off switch again and the soundcase will turn off.

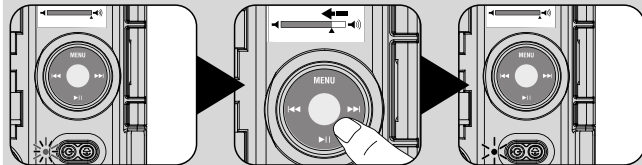


Press the Audio On / Off switch and speaker output will shut down; press it again and speaker output will recover.

To use EARPHONES with your iceBar, plug earphones into the earphone jack, then press the Audio switch. Audio will then swap to earphone.

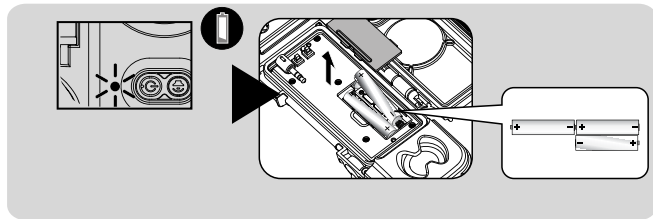
Download from Www.Somanuals.com. All Manuals Search And Download.

Controlling your iPod



Due to variance in the audio files and iPods, sound distortion (clipping) may occur at high volume settings. When this occurs the LED status indicator flashes red. Reduce iPod volume accordingly to a safer level.

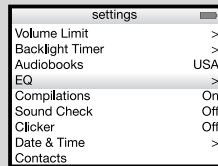
Replacing Batteries



If the LED status indicator flashes red color or power indicator dims increasingly often, reduce the iPod volume or change the batteries. Alkaline batteries are recommended.

Download from Www.Somanuals.com. All Manuals Search And Download.

EQ



For better treble (e.g. vocals), select 'Acoustic' or 'Treble Booster.'
For better bass, select 'Bass Booster,' 'Dance,' or 'Hip Hop.'

Note: At high volume levels, sound quality from this unit might not be fully optimized unless this setting is selected on your iPod unit.

Troubleshooting



Problem

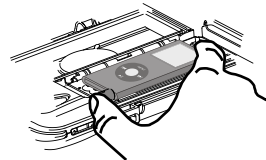
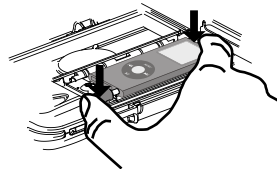
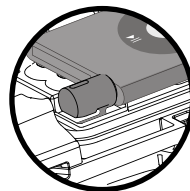
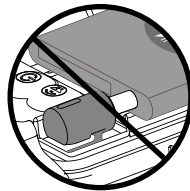
Solution

No Power.....

1. Check if batteries are installed properly
2. Batteries may be low. Replace with new batteries*
3. Press power button  on the iceBar and iPod.

No Sound.....

1. Check if the 3.5mm mini jack is plugged into iPod all the way. (See illustration on page 22).
2. Check sound by pressing  audio switch.
3. Check volume on iPod and adjust volume.
4. Check if the power is on  on the iceBar.
5. Batteries may be low. Replace with new batteries*



Make sure the 3.5mm mini jack is plugged into iPod all the way.

Download from Www.Somanuals.com. All Manuals Search And Download.

Problem

Solution

iPod doesn't
fit in case.....

1. Check if iPod audio jack is in correct position depending on what iPod model you have your iPod (1st Gen position or 2nd Gen position).
2. Make sure the 3.5mm mini jack and cord is not blocking the iPod.
3. Clear iPod compartment of any debris.
4. Make sure O-ring is properly fitted.

iceBar emits
noises, or
distorted sounds.....

1. Replace with new batteries.

* see Battery & Safety Rules on page 31 under care and maintenance.

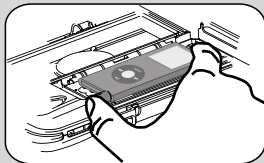
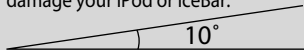
If problem still persists, call the iceBar helpline at (562) 903-9550 or (800) 747-2660 (within U.S. only)

Download from www.Somanuals.com. All Manuals Search And Download.

Care and Maintenance

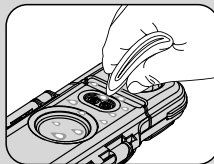
1

When removing iPod from iceBar, be careful not to pull the iPod out at an angle greater than 10° while plugged into audio jack. Trying to remove iPod at angle greater than 10° can potentially damage your iPod or iceBar.

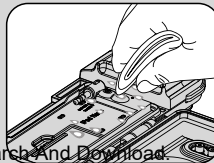


Download from Www.Somanuals.com. All Manuals Search And Download.

2

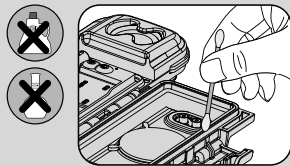


*Use a damp cloth without any cleaning solvents to clean and dry the exterior of iceBar.



Wipe the interior of the unit with a soft dry cloth.

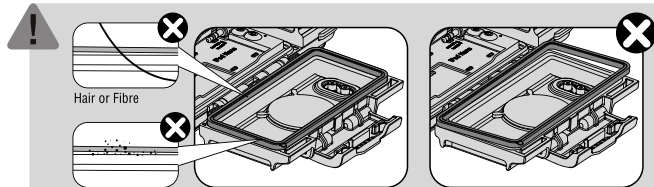
Do not wash the interior with water.



Clean the O-ring with a damp cotton swab and no chemicals.

*Keep O-ring in the iPod nano compartment clean from any debris such as sand, dirt, or hair. Debris such as this can compromise the iceBar's water-tight seal and may allow water to penetrate into the iceBar.

Download from Www.Somanuals.com. All Manuals Search And Download.



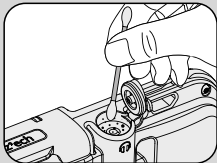
Hair or Fibre

Sand or other particles

Please check O-ring placement and condition before use. O-ring is what keeps your iPod safe and dry.

Do not use oil or chemicals during maintenance, as this will cause corrosion to the sealing ring.

Remove any debris (e.g. sand, dirt, hair) in the sealing ring to avoid water leakage.

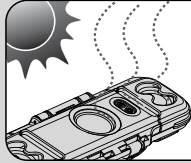
E

If any particle enters the earphone jack, please clear with a damp cotton swab and let it dry.

Caution: Air Tightness

Significant change in altitude or temperature (e.g. during and after plane travel) may cause the iceBar to be sealed shut. Greater force than normal may be required to open the unit. Open latch and pull gently to release pressure.

Download from Www.Somanuals.com. All Manuals Search And Download.

F

Operating Environment

Continuous exposure to sunlight and extreme temperatures will shorten the life of the sealing parts of the iceBar. Please keep iceBar indoors when not in use. For optimum performance, use where temperature is always between 0° and 35° C (32° to 95° F). iPod playtime might temporarily shorten in low-temperature conditions.

Keep your iPod out of the sun or a hot car (even the glove box). Heat will degrade your battery's performance.

Battery Safety Rules:

Batteries must be inserted with the correct polarity. Only batteries of the same or equivalent type should be used.

Do not mix old and new batteries.

Do not mix alkaline & rechargeable batteries.

Remove old or exhausted batteries from unit.

Remove the batteries if the unit will not be used for a long period of time.

Never throw batteries into a fire.

Do not expose batteries to fire or other heat sources.

Low batteries may cause unit to emit noises or distorted sounds. If this happens, remove batteries and replace with new alkaline or fully charged rechargeable batteries.

*Battery & Electronic Device Disposal: Spent or discharged batteries & electronic devices must be properly disposed of and recycled in compliance with all applicable laws. For detailed information, contact your local solid waste authority or authorized state and federal locations.



Handling Information

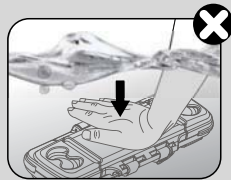
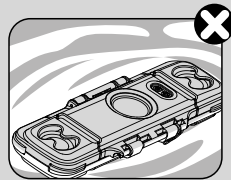
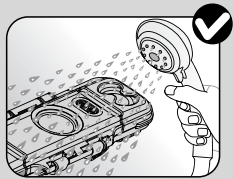
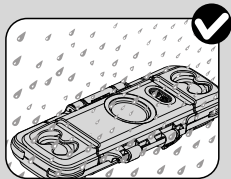
Using Connector Ports in your iPod - Never force a connector into a port. Check for obstructions on the port. If the connector and port don't join with reasonable ease, they probably don't match. Make sure the connector matches the port and that you have positioned the connector correctly in relation to the port.

Disposing of iPod properly - For information about the proper disposal of iPod, including other important regulatory compliance information, see the features guide for your iPod.

More information can be found in your *iPod Safety Guide*.

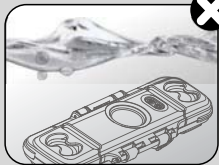


Caution

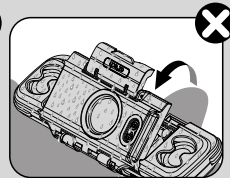
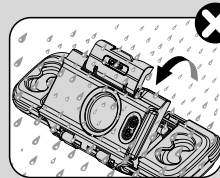


The iceBar can be used in wet environments (e.g. shower, rain), but it not designed for underwater use.

Download from Www.Somanuals.com. All Manuals Search And Download.

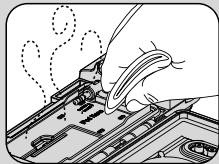
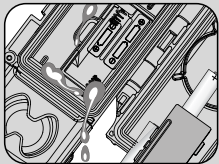


Please be careful when using the iceBar in deep water because unit can't float without the buoy flotation device. iceBar can only be submerged to a depth of no more than 1 meter.



Do not open the iceBar cover when wet or in wet environments.

Repair



If unit gets wet inside, dampen with dry cloth and leave open to air dry.

Download from Www.Somanuals.com. All Manuals Search And Download.

Warranty

Warranty and Return Policy

Please register online at www.lovemyeego.com or www.atlantic-inc.com OR mail in your registration card to Atlantic, Inc. P.O. Box 2399, Santa Fe Springs, CA 90670-0399

One Year Limited Warranty.

All EGO Branded products are Manufactured and Distributed by Atlantic, Inc. This warranty shall apply only to products that have been used as intended by the manufacturer. This warranty only applies to the original purchaser.

Download from Www.Somanuals.com. All Manuals Search And Download.

One Year Limited Warranty (continued)

This warranty does not cover normal wear and tear from extended use or accidents and will not apply to products that are damaged due to misuse or neglect. Atlantic, Inc. warrants to the original purchaser that its products are free from defect in materials and workmanship for a period of one year, which starts from the date of original purchase. This warranty is void if the product has been damaged by accident, unreasonable use, neglect, improper service or other causes not arising out of defect in material and workmanship. This limited warranty applies to products purchased in the U.S. and Canada.

One Year Limited Warranty (continued):

If our inspection (testing and examination) finds the product to be defective in either materials or workmanship, we will at our option, repair or replace it. Atlantic, Inc. is not liable if testing and examination does not disclose the alleged defect or malfunction and the product will be returned at owner's expense. There are no other warranties, expressed or implied, including fitness for a particular purpose or merchantability beyond the terms of this limited warranty. Atlantic, Inc. shall not be liable for any incidental or consequential damages.

Warranty Disclaimer:

This warranty does not cover damage to any iPods® or other electronic devices used with this product. Atlantic, Inc. is not liable for loss of use of the product, iPod® or other electronic devices or loss of data/files. Neither Atlantic, Inc. nor our resellers can be held responsible for loss or damage to items stored in the case, caused by misuse, accident or neglect, or of failure to follow the instructions.

Return Policy

To obtain service under this warranty follow these steps:

- 1) Return to retailer
- 2) For U.S. and Canada only: If the retailer's return period has been exceeded, call the EGO Helpline at (562) 903-9550 or Toll Free at (800) 747-2660, M-F, 8am-5pm, PST.
- 3) A Return Merchandise Authorization (RMA) number for your return must be assigned before return of product.
- 4) RMA number must be clearly marked on the four sides of package. A missing or unclear RMA number may result in a delay of claim.
- 5) Legible contact information must accompany the package with the following information: Name, complete physical address, and phone number where you can be reached. Missing or unclear contact information may result in a delay of claim.

Return Policy (continued)

- 6) Please ship the product postage paid or freight prepaid. COD shipments will not be accepted. Atlantic will not assume responsibility for loss of damage during incoming shipment. For your protection, carefully package the shipment and insure it with the carrier.
- 7) Forward the product with legible dated proof of purchase to Atlantic, Inc., 10018 Santa Fe Springs Road, Santa Fe Springs, CA 90670, USA
Attention: Returns Department.

Download from Www.Somanuals.com. All Manuals Search And Download.

Warranty and Return Policy

For Your Records:

Model No _____

Lot No _____

Date of Purchase _____

Location of Purchase _____

Important: Keep all of your original packaging material and proof of purchase (store receipt), in the event you have to ship the product for service.

Download from Www.Somanuals.com. All Manuals Search And Download.



Specifications

Amplifier Output	1W x 2 (RMS)
Frequency Range	200-18,000Hz
Power Source	3 x AAA (LR03)
Dimensions	W: 217mm/8.5", H: 73mm, 2.9", D: 34mm, 1.3"
Weight	0.26kg / 0.57lb (without batteries)
Playback Time	Over 18 hours at medium to high volume (alkaline batteries)
Audio Output	3.5mm earphone jack

Copyright

Apple and iPod are trademarks of Apple Inc., registered in the U.S. and other countries.

FCC Compliance Statement

This device complies with Part 15 of the FCC Rules. Operation is subject to the following two conditions: (1) This device may not cause harmful interference, and (2) This device must accept any interference received, including interference that may cause undesired operation.

Warning: Changes or modifications to this unit not expressly approved by the part responsible for compliance could void the user's authority to operate the equipment.

NOTE: This equipment has been tested and found to comply with the limits for a Class B digital device, pursuant to Part 15 of the FCC Rules. These limits are designed to provide reasonable protection against harmful interference in a residential installation. This equipment generates uses and can radiate radio frequency energy and, if not installed and used in accordance with the instructions, may cause harmful interference to radio communications.

However, there is no guarantee that interference will not occur in a particular installation. If this equipment does cause harmful interference to radio or television reception, which can be determined by turning the equipment off and on, the user is encouraged to try to correct the interference by one or more of the following measures:

Reorient or relocate the receiving antenna.

Increase the separation between the equipment and receiver.

Connect the equipment into an outlet on a circuit different from that to which the receiver is connected.

Consult the dealer or an experienced radio/TV technician for help.

Trade Name: iceBar™

Model Name: 25906059



RoHS compliant

Download from [Www.Somanuals.com](http://www.Somanuals.com). All Manuals Search And Download.

070907 #25906059

Free Manuals Download Website

<http://myh66.com>

<http://usermanuals.us>

<http://www.somanuals.com>

<http://www.4manuals.cc>

<http://www.manual-lib.com>

<http://www.404manual.com>

<http://www.luxmanual.com>

<http://aubethermostatmanual.com>

Golf course search by state

<http://golfingnear.com>

Email search by domain

<http://emailbydomain.com>

Auto manuals search

<http://auto.somanuals.com>

TV manuals search

<http://tv.somanuals.com>