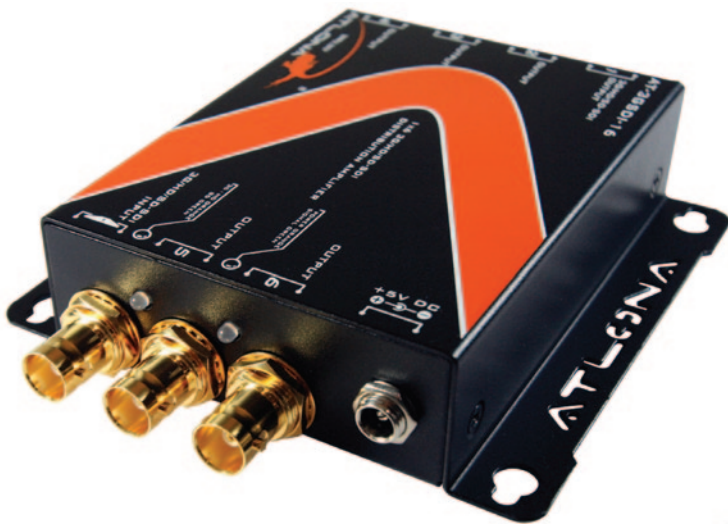




ATLONA
Connecting technology to your world

USER MANUAL

1X6 3G/HD/SD-SDI SPLITTER WITH RECLOCKING AT-3GSDI-16



Toll free: 1-877-536-3976
Local: 1-408-962-0515



www.atlona.com

TABLE OF CONTENTS

1. INTRODUCTION	1
2. PACKAGE CONTENTS	1
3. FEATURES	1
4. SPECIFICATIONS	2
5. PANEL DESCRIPTIONS	3
5.1. Transmitting Module	3
5.1.1. Front Panel	3
5.1.2. Rear Panel	3
6. CONNECTION DIAGRAM	4
7. INSTALLATION	4
8. SAFETY INFORMATION	5
9. WARRANTY	6
10. ATLONA PRODUCT REGISTRATION	7
11. SIGNAL MEASUREMENT	8

INTRODUCTION:

The AT-3GSDI-16 1x6 3G/HD/SD-SDI Splitter with Reclocking receives one SDI input, perfectly duplicates it, and re-transmits six SDI outputs for real time multi-viewing. It is a reliable video device splitting a SDI, HD-SDI, or 3G-SDI video source to six SDI compliant displays at the same time.

PACKAGE CONTENTS:

- 1x AT-3GSDI-16
- 1x5V universal power supply
- 1x User's manual

FEATURES:

- 3G/HD/SD triple-rate distribution
- Four separately buffered and reclocked outputs
- Cable equalization (Beldon 1694A) and signal retiming
- Dual color LED indication of input lock and rate
- Passes all ancillary data
- Provides automatic input cable equalization up to 300m (1000ft)@SD, 150m (500ft)@HD and 90m (300ft)
- Reclocking SDI signals for cascading and thus longer transmission
- Inter-locked power supply for better fixedness



SPECIFICATIONS

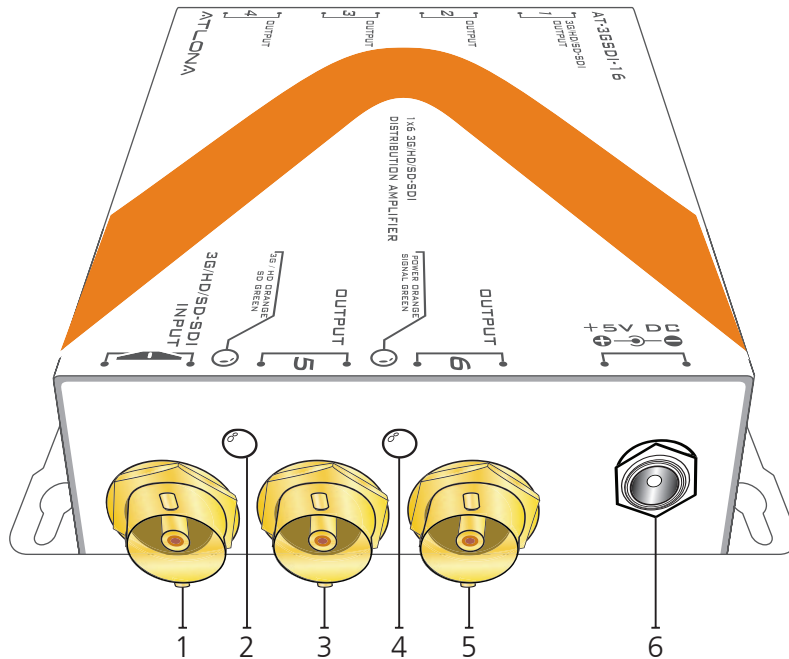
Technical		
Role of usage	1 X 6 Distribution Amplifier (Splitter)	
SDI standards	SD-SDI, HD-SDI, 3G-SDI	
Auto 3G/HD/SD detectionY	es	
Supported protocols	SMPTE 259M, SMPTE 292M, SMPTE 424M, SMPTE 425M	
Video bandwidth[2.97Gpbs & 2.97/1.001Gpbs]	
Data rates	270 / 1483 / 1485 / 2967/ 2970 Mbps	
Output impedance	75Ω	
Reclocking functionY	es	
Cable equalization[3G] up to 90m (300ft) [HD] up to 150m (500ft) [SD] up to 300m (1000ft)	
Audio supportY	es	
RP-198 pathological patternsI	immune	
PCB stack-up	4-layer board [impedance control X differential 100Ω; single 50Ω]	
Input	1x BNC [SDI]	
Output	6x BNC [SDI]	
BNC connector	75Ω inter-locked socket	
Eye pattern characteristics	Amplitude: Within 800mV 3% (<10%) Rise overshoot: Less than 2% (<10%) T Fall overshoot: Less than 2% (<10%) A Long time jitter: 0.195g (<1.0g) Timing jitter: 0.195g (<1.0g) Alignment jitter: 0.127g (<0.2g)	
Mechanical		
Housing	Metal enclosure	
Dimensions [L x W x H]	Model	5.7" x 3.2" x 1" (145 x 80 x 25mm)
	Package	10.6" x 6.9" x 3.2" (270 x 175 x 80mm)
	Carton	15.7" x 12.6" x 11.8" (450 x 370 x 300mm)
Weight	Model	10.9oz (310g)
	Package	1.7lbs (785g)
Fixedness	Inter-locked power supply	
Power supply	5V 4A DC	
Power consumption	10 Watt (max)	
Operation temperature	32~104°F (0~40°C)	
Storage temperature	-4~140°F (-20~60°C)	
Relative humidity	20~90% RH (no condensation)	



PANEL DESCRIPTIONS

5.1. Transmitting Module

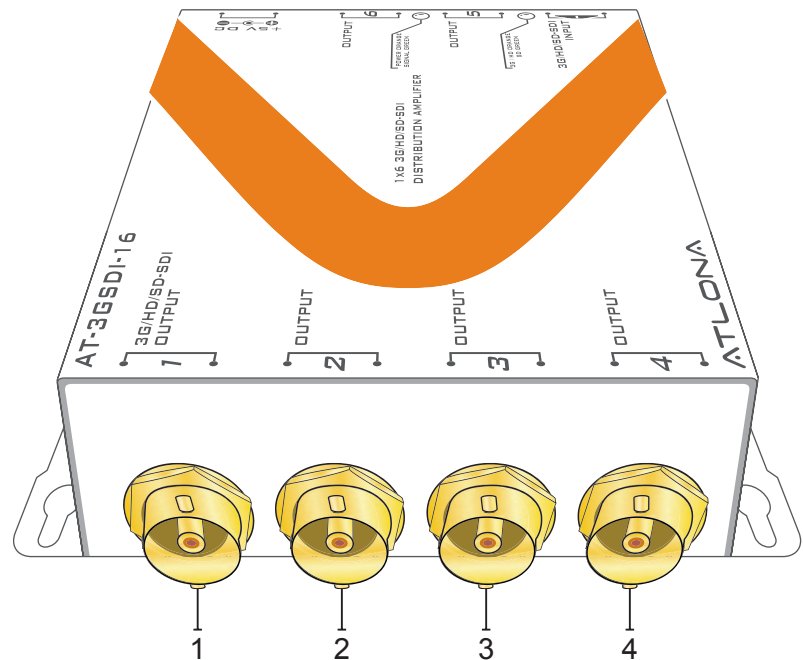
5.1.1. Front Panel



1. 3G/HD/SD-SDI input
2. LED — Orange: 3G/HD-SDI Green: SD-SDI3.
3. 3G/HD/SD-SDI output 5
4. LED — Orange: Power status Green: Signal status
5. 3G/HD/SD-SDI output 6
6. 5V DC power jack

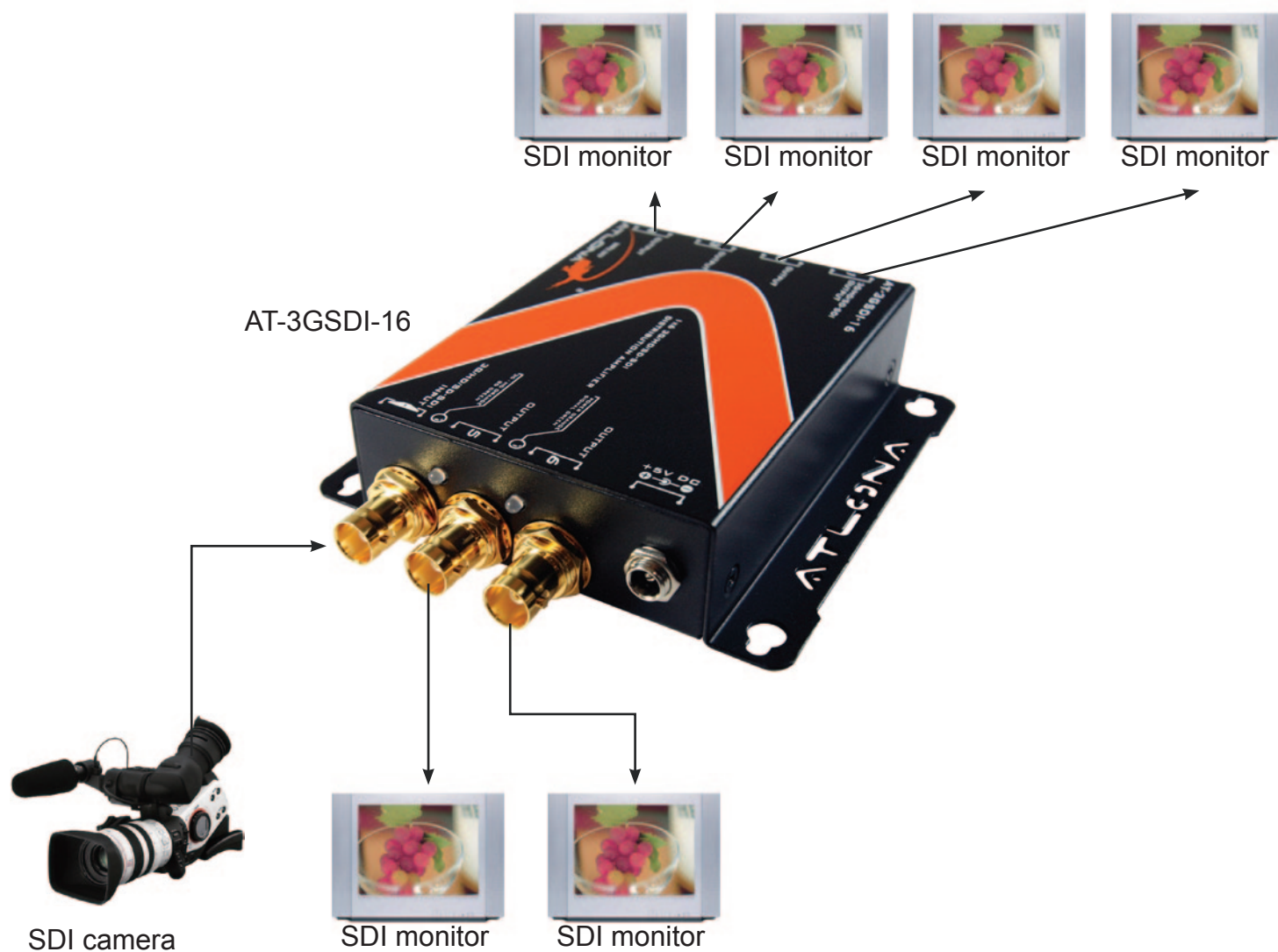
5.1.2. Rear Panel

1. 3G/HD/SD-SDI output 1
2. 3G/HD/SD-SDI output 2
3. 3G/HD/SD-SDI output 3
4. 3G/HD/SD-SDI output 4





CONNECTION DIAGRAM



INSTALLATION:

1. Connect a camera or other SDI devices to 3G/HD/SD-SDI input.
2. Connect SDI displays or devices to 3G/HD/SD-SDI outputs.
3. Screw the 5V power supply unit to the locking power jack.

SAFETY INFORMATION

Safeguards



To reduce the risk of electric shock, do not expose this product to rain or moisture



Do not modify the wall plug. Doing so will void the warranty and safety features.



If the wall plug does not fit into your local power socket, hire an electrician to replace your obsolete socket.



This equipment should be installed near the socket outlet and the device should be easily accessible in the case it requires disconnection.

Precautions

FCC regulations state that any unauthorized changes or modifications to this equipment, not expressly approved by the manufacturer, could void the user's authority to operate this equipment.

Operate this product using only the included external power supply. Use of other power supplies could impair performance, damage the product, or cause fires.

In the event of an electrostatic discharge this device may automatically turn off. If this occurs, unplug the device and plug it back in.

Protect and route power cords so they will not be stepped on or pinched by anything placed on or against them. Be especially careful of plug-ins or cord exit points from this product.

Avoid excessive humidity, sudden temperature changes or temperature extremes.

Keep this product away from wet locations such as bathtubs, sinks, laundries, wet basements, fish tanks, and swimming pools.

Use only accessories recommended by Atlona to avoid fire, shock, or other hazards.

Unplug the product before cleaning. Use a damp cloth for cleaning and not cleaning fluid or aerosols. Such products could enter the unit and cause damage, fire, or electric shock. Some substances may also mar the finish of the product.

Never open, remove unit panels, or make any adjustments not described in this manual. Attempting to do so could expose you to dangerous electrical shock or other hazards. It may also cause damage to your AT-3GSDI-16. Opening the product will void the warranty.

Do not attempt to service the unit. Disconnect the product and contact your authorized Atlona reseller or contact Atlona directly.

WARRANTY

Limited Warranty

Atlona Technologies warrants that (a) its products (the AT-3GSDI-16) will perform substantially in accordance with the accompanying written materials for a period of 3 years from the date of receipt and (b) that the product will be free from defects in materials and workmanship under normal use and service for a period of 3 years. In the event applicable law imposes any implied warranties, the implied warranty period is limited to 3 years from the date of receipt. Some jurisdictions do not allow such limitations on duration of an implied warranty, so the above limitation may not apply to customers that fall within those areas.

Customer Remedies

Atlona Technologies' and its suppliers' entire liability and Customer's exclusive remedy shall be, at Atlona Technologies' decision, either return of the price paid for the product, repair, or replacement of the product that does not meet this Limited Warranty and which is returned to Atlona Technologies with a copy of the Customer's receipt. This Limited Warranty is void if failure of the product has resulted from accident, abuse, misapplication, or natural occurrence. In example but not limited to: power surges (electrical storms, local power outage), dropping the product (or items on the product), contact with fluids, and physical misconduct (i.e. kicking or punching). Any replacement product will be warranted for the remainder of the original warranty period.

No other warranties

To the maximum extent permitted by applicable law, Atlona Technologies and its suppliers disclaim all other warranties, either expressed or implied, including, but not limited to, implied warranties of merchantability and fitness for a particular purpose, with regard to the product and any related written materials. This Limited Warranty gives customer specific legal rights. Customers may have other rights depending on the jurisdiction.

No liability for damages

To the maximum extent permitted by applicable law, in no event shall Atlona Technologies or its suppliers be liable for any damages arising out of the use of or inability to use this product, even if Atlona Technologies has been advised of the possibility of such damages. Such damages include but are not limited to: special, incidental, consequential, or indirect damages for personal injury, loss of business profits, business interruption, loss of business information, or any other pecuniary loss. Atlona Technologies' and its suppliers' entire liability under any provision of this agreement shall be limited to the amount actually paid by you for the product. Some Jurisdictions do not allow the exclusion or limitation of liability for consequential or incidental damage. The above limitations may not apply to you in such jurisdictional cases.

ATLONA PRODUCT REGISTRATION

Thank you for purchasing this Atlona product. - We hope you enjoy it and will take an extra few moments to register your new purchase.

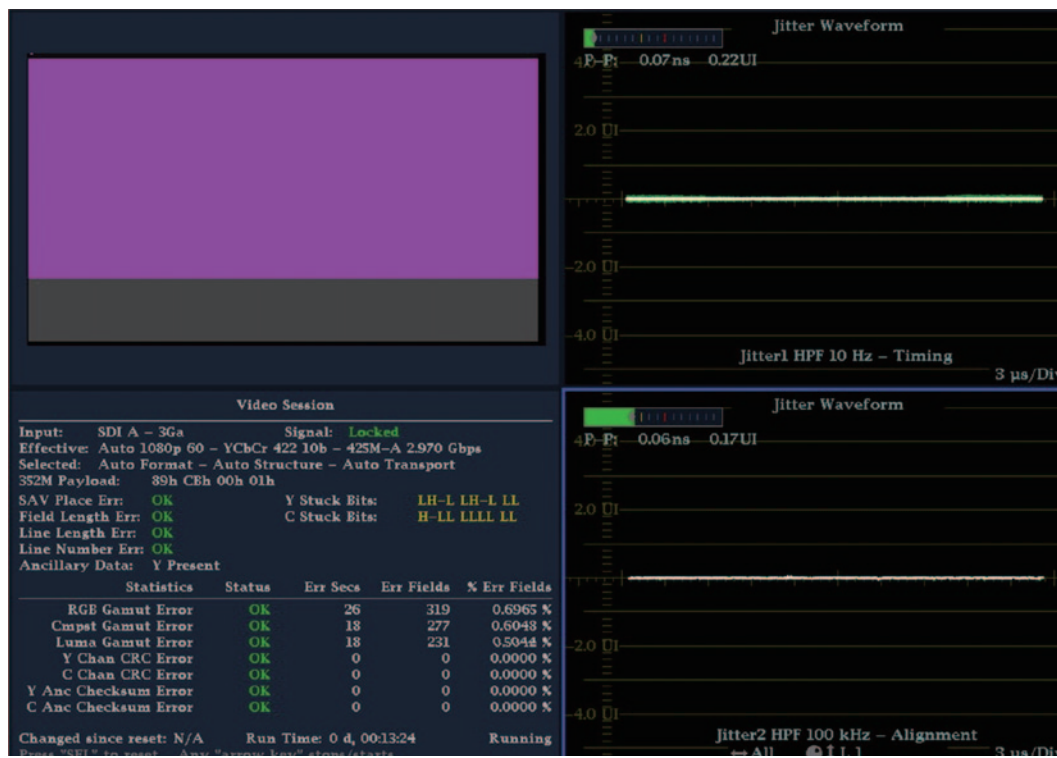
Registration creates an ownership record if your product is lost or stolen and helps ensure you'll receive notification of performance issues and firmware updates.

At Atlona, we respect and protect your privacy, assuring you that your registration information is completely secure. Atlona product registration is completely voluntary and failure to register will not diminish your limited warranty rights.

To register go to: <http://www.atlona.com/registration>



SIGNAL MEASUREMENT



Free Manuals Download Website

<http://myh66.com>

<http://usermanuals.us>

<http://www.somanuals.com>

<http://www.4manuals.cc>

<http://www.manual-lib.com>

<http://www.404manual.com>

<http://www.luxmanual.com>

<http://aubethermostatmanual.com>

Golf course search by state

<http://golfingnear.com>

Email search by domain

<http://emailbydomain.com>

Auto manuals search

<http://auto.somanuals.com>

TV manuals search

<http://tv.somanuals.com>