

Atlona LinkCast Wireless HD Audio/Video System

*AT-LinkCastAV
& AT-LinkCast-HTX*



Atlona Product Registration

Thank you for purchasing this Atlona product. - We hope you enjoy it and will take an extra few moments to register your new purchase.

Registration creates an ownership record if your product is lost or stolen and helps ensure you'll receive notification of performance issues and firmware updates.

At Atlona, we respect and protect your privacy, assuring you that your registration information is completely secure. Atlona product registration is completely voluntary and failure to register will not diminish your limited warranty rights.

To register go to: <http://www.atlona.com/registration>



To reduce the risk of electric shock, do not expose this product to rain or moisture



If the wall plug does not fit into your local power socket, hire an electrician to replace your obsolete socket.



Do not modify the wall plug. Doing so will void the warranty and safety features.



This equipment should be installed near the socket outlet and the device should be easily accessible in the case it requires disconnection.

FCC regulations state that any unauthorized changes or modifications to this equipment, not expressly approved by the manufacturer, could void the user's authority to operate this equipment. AT-LINKCASTAV FCC 121217R-ITUSP02V02 AT-LINKCAST-HTX FCC 121213R-ITUSP02V02

Operate this product using only the included external power supply. Use of other power supplies could impair performance, damage the product, or cause fires.

In the event of an electrostatic discharge this device may automatically turn off. If this occurs, unplug the device and plug it back in.

Protect and route power cords so they will not be stepped on or pinched by anything placed on or against them. Be especially careful of plug-ins or cord exit points from this product.

Avoid excessive humidity, sudden temperature changes or temperature extremes.

Keep this product away from wet locations such as bathtubs, sinks, laundries, wet basements, fish tanks, and swimming pools.

Use only accessories recommended by Atlona to avoid fire, shock, or other hazards.

Unplug the product before cleaning. Use a damp cloth for cleaning and not cleaning fluid or aerosols. Such products could enter the unit and cause damage, fire, or electric shock. Some substances may also mar the finish of the product.

Never open, remove unit panels, or make any adjustments not described in this manual. Attempting to do so could expose you to dangerous electrical shock or other hazards. It may also cause damage to your AT-LinkCastAV and AT-LinkCast-HTX. Opening the product will void the warranty.

Do not attempt to service the unit. Disconnect the product and contact your authorized Atlona reseller or contact Atlona directly.

Package Contents



AT-LinkCast-HTX
(Transmitter)



Remote



Swivel Adapter



AT-LinkCastAV



6' HDMI Cable



3' Mini USB to USB Cable



AV Station Power Adapter



| | |
|-----------------------|---------------|
| Laptops @ 1080p* | up to 40 feet |
| 1080p Sources @ 24Hz* | up to 35 feet |
| 1080p Sources @ 60Hz* | up to 25 feet |

*Distance may vary due to source or environment

Transmitter Connection Laptop & Blu-ray Player



*Further Laptop set up instructions later in set up guide.



- **Be sure to** connect the transmitter first
- **Extra transmitters** are available to purchase through Atlona.com
The LinkCastAV is able to connect to up to 5 transmitters
- **The 360° Swivel Adapter** is available in case any ports are blocked or the transmitter is unable to be plugged in.
- **The source needs** to be at least 2 feet away from any wireless routers
- **Transmitter may get hot** in use, this is normal. Do not touch HDMI connector during or after use.
- **Do not cover** transmitter with hands when in use or possible signal loss may occur.
- **The transmitter and AV Station** come pre synced. If for some reason the transmitter is unsynced or if you purchase additional transmitters please see page on **REMOTE ON SCREEN MENU** for syncing instructions.

Transmitter Connection Game Consoles



A/V Station Connection HDTV & Projector to AVR

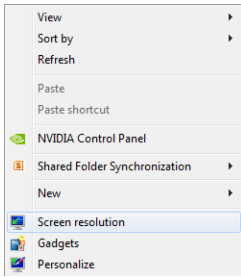


**Atlona
LinkConnect Flat HDMI Cable
AT-LCT-4 (NOT INCLUDED)**
For additional HDMI cables we
recommend the Atlona LinkConnect
collection of Flat and Thin High-Speed
HDMI Cables with Ethernet. Available at
atlona.com

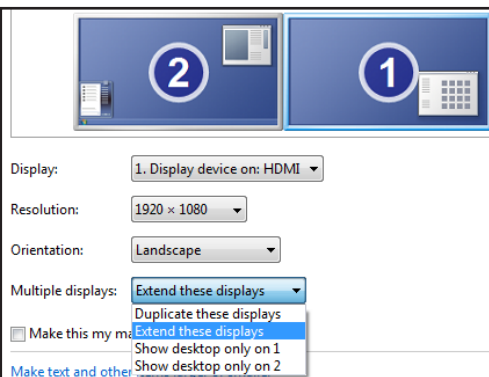


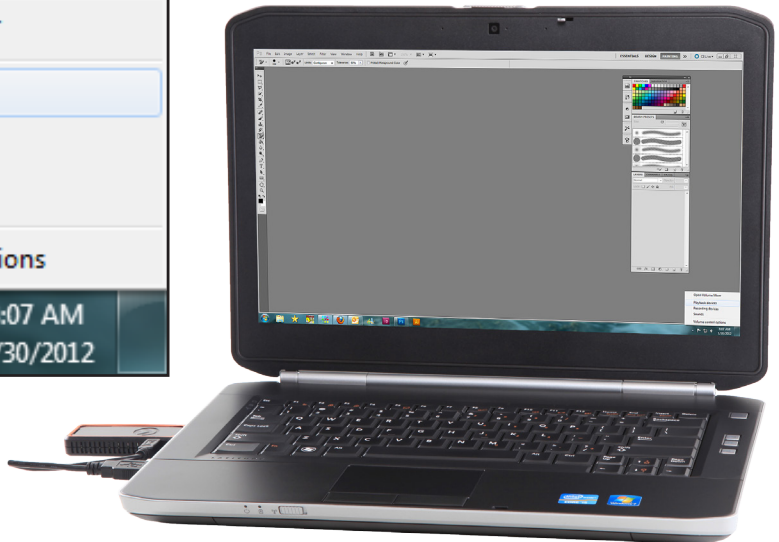
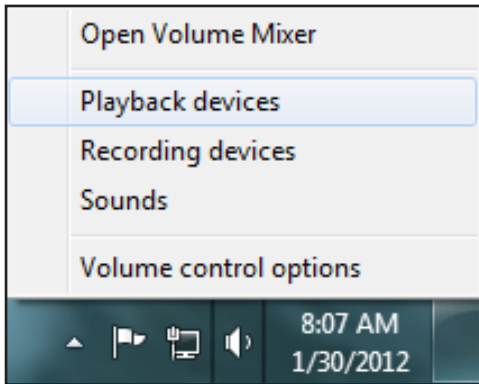
- **An additional** (not included) HDMI cable is needed when connecting to an AVR. Connect the LinkCastAV into the AVR then the AVR into an HDTV, Monitor, or Projector.
- **If an AVR is not** being used, connect the LinkCastAV directly into the HDMI port of the HDTV, Monitor, or Projector.
- **At this time**, the 1st transmitter and LinkCastAV should be synced and ready to use. If not, please see Remote instructions further in the manual.

Laptop Set Up Mirroring, Extending, & Main Display



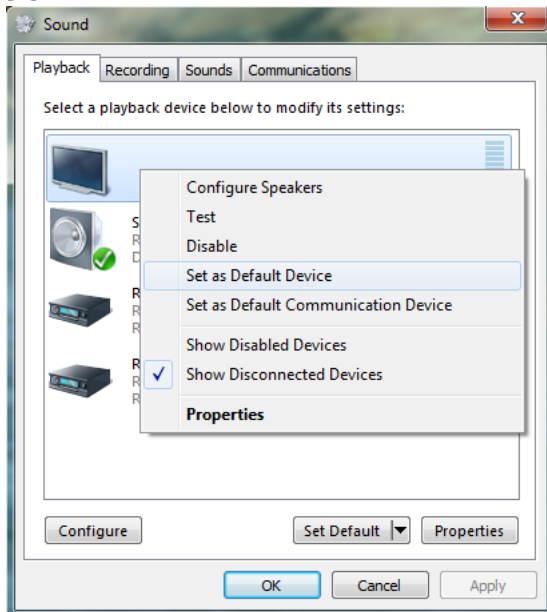
- **Right click the desktop** and select "Screen Resolution"
- Once the menu comes up there are three display options.
(if you are unsure which screen is your current screen press the identify button to the right of the numbered screens)
- **Duplicating** the displays. As pictured below, if the option of "Duplicate these displays" is selected the same screen will display on the laptop and the HDTV, Monitor, or Projector.
- **Extending** the displays. As pictured above, if the option of "Extend these displays" is selected then the desktop background will display on the HDTV, Monitor, or Projector. This allows content to be split between two displays, such as a word document on one screen and a movie on the other.
- **Setting** the display. Select "Show desktop only on #" to make the content show on only one display.





- **Locate the Volume** Control icon on the windows bar and right click it.
- **Select the option** of "Playback devices". A menu with several pictures of audio devices should display (as seen below).
- **Right click the audio device** for the display the audio will be playing on and select "Set as Default Device".
- **Once the correct device is chosen**, audio will come from the new speakers.

Note: When only wanting to hear audio from the display or AVR disable the laptop speakers.



Laptop Set Up HDTV Picture Cutoff



When connecting a laptop/computer to an HDTV there is sometimes missing picture or cutoff. To fix this is different for each display. Toggling on or off the auto adjust or energy saving modes can usually fix these problems. See tables below for examples of different names for the auto adjust option. (The auto adjust function changes name between Brand and Model.)

| Screen | |
|-------------------|---------------|
| Setting Memory | Current Input |
| Wide Mode | Wide Zoom |
| Auto Wide | On |
| 4:3 Default | Off |
| Auto Display Area | On |

| Picture | |
|----------------|------|
| Aspect Ratio | 16:9 |
| Picture Wizard | Off |
| Energy Saving | Auto |
| Picture Mode | - |

| | |
|-------------------|--------------|
| Picture | Color |
| | Tint (G/R) |
| | Eco Solution |
| | Auto Adjust |
| | Screen |
| Advanced Settings | |

Remote Button Configuration



Power: Turns the LinkCastAV on and off

Menu: Pulls up the on screen Set Up menu

Exit: Turns off on screen menu

Selection Buttons: Use to go through the on screen menu options

Source: Pulls up quick selection menu for inputs

Input Buttons: Quick selection buttons for already synced HDMI transmitters

Remote On Screen Menu



Button



Setup: Menu button pulls up the setup menu.
See table below to see each option and its on screen display.
Choices will highlight in orange.

Selection: ⇨ Add New Video Source

Please Activate Registration on Transmitter Unit

Note: Press the button at the bottom of the transmitter at this time.

Selection: ⇨ Remove Video Source

Choose Source to Remove

⇨ Atlona

⇨ Game

Selection: ⇨ Modify Video Source Name

Choose Source to Rename

⇨ Atlona

⇨ WHDI 95

Rename Video Sources Name

W HDI 95

Selection: ⇨ Disconnect Wireless Link ---> Disconnects LinkCastAV

3 Year Limited Warranty

Limited Warranty

Atlona Technologies warrants that (a) its products (the AT-LinkCastAV and AT-LinkCast-HTX) will perform substantially in accordance with the accompanying written materials for a period of 3 years from the date of receipt and (b) that the product will be free from defects in materials and workmanship under normal use and service for a period of 3 years. In the event applicable law imposes any implied warranties, the implied warranty period is limited to 3 years from the date of receipt. Some jurisdictions do not allow such limitations on duration of an implied warranty, so the above limitation may not apply to customers that fall within those areas.

Customer Remedies

Atlona Technologies' and its suppliers' entire liability and Customer's exclusive remedy shall be, at Atlona Technologies' decision, either return of the price paid for the product, repair, or replacement of the product that does not meet this Limited Warranty and which is returned to Atlona Technologies with a copy of the Customer's receipt. This Limited Warranty is void if failure of the product has resulted from accident, abuse, misapplication, or natural occurrence. In example but not limited to: power surges (electrical storms, local power outage), dropping the product (or items on the product), contact with fluids, and physical misconduct (i.e. kicking or punching). Any replacement product will be warranted for the remainder of the original warranty period.

No other warranties

To the maximum extent permitted by applicable law, Atlona Technologies and its suppliers disclaim all other warranties, either expressed or implied, including, but not limited to, implied warranties of merchantability and fitness for a particular purpose, with regard to the product and any related written materials. This Limited Warranty gives customer specific legal rights. Customers may have other rights depending on the jurisdiction.

No liability for damages

To the maximum extent permitted by applicable law, in no event shall Atlona Technologies or its suppliers be liable for any damages arising out of the use of or inability to use this product, even if Atlona Technologies has been advised of the possibility of such damages. Such damages include but are not limited to: special, incidental, consequential, or indirect damages for personal injury, loss of business profits, business interruption, loss of business information, or any other pecuniary loss. Atlona Technologies' and its suppliers' entire liability under any provision of this agreement shall be limited to the amount actually paid by you for the product. Some Jurisdictions do not allow the exclusion or limitation of liability for consequential or incidental damage. The above limitations may not apply to you in such jurisdictional cases.

Free Manuals Download Website

<http://myh66.com>

<http://usermanuals.us>

<http://www.somanuals.com>

<http://www.4manuals.cc>

<http://www.manual-lib.com>

<http://www.404manual.com>

<http://www.luxmanual.com>

<http://aubethermostatmanual.com>

Golf course search by state

<http://golfingnear.com>

Email search by domain

<http://emailbydomain.com>

Auto manuals search

<http://auto.somanuals.com>

TV manuals search

<http://tv.somanuals.com>