



Anchor/Masthead Light

12-Volt: 7200 and 7400 Series

24-Volt: 7250 and 7450 Series

Installation Instructions

SAVE THESE INSTRUCTIONS

Form Number 69394 Rev. B

04-07

FEATURES

Attwood 3-mile (4.8 km) Anchor/Masthead Lights consist of anodized aluminum poles with lightweight heads. Horizontal and vertical bases allow light pole to be adjusted and locked within a 180° arc.

Lights provide a 3-mile, 225° forward running light and 2-mile all-round anchor light. For power-driven boats up to 65.6 feet (20 meters). Lights meet USCG CFR 183.810, ABYC A-16 requirements, and all applicable standards as tested by Imanna Laboratory, Inc., December 17, 2003. Lights use 8-watt festoon lamp, #9230 (for 12-volt systems) or #910409 (for 24-volt systems).

CAUTION

To prevent personal injury, disconnect the power source when installing or servicing any electrical product. Remove vessel from water when using any 120 VAC power tools.

Lens can be HOT and can melt or scorch fabric. When folded down, turn light OFF and be sure lens does not touch anything.

REQUIRED FOR INSTALLATION

- Cordless drill; 1/8" and 3/8" (3 and 10mm) bits
- Marine-grade non-silicone sealant
- Phillips screwdriver
- Two #10 pan head stainless steel screws
- 3-position switch (OFF/ON/ON)
- Fuse holder and fuse: 2-amp (for 12-volt systems) or 1-amp (for 24-volt systems)
- 16-gauge wire
- Marine-grade wire connectors for 16-gauge wire

MOUNTING LOCATION

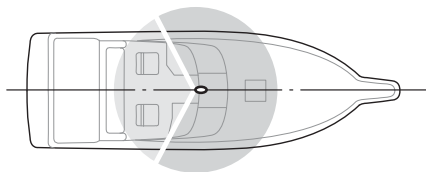
CAUTION

Install light so that fin (Figure 3) is TOWARD STERN and aligned on the fore/aft centerline of the vessel (within 1°). If not properly aligned, lights will not shine in required fore/aft arc.

Base must pivot on the fore/aft centerline and be mounted on a surface that allows a 360° arc of unobstructed light visibility. (Figure 1)

Bases are available for mounting on vertical or horizontal surfaces. Release the cam-lock adjustment handle to fold light or adjust to vertical position.

Figure 1



INSTALLATION INSTRUCTIONS

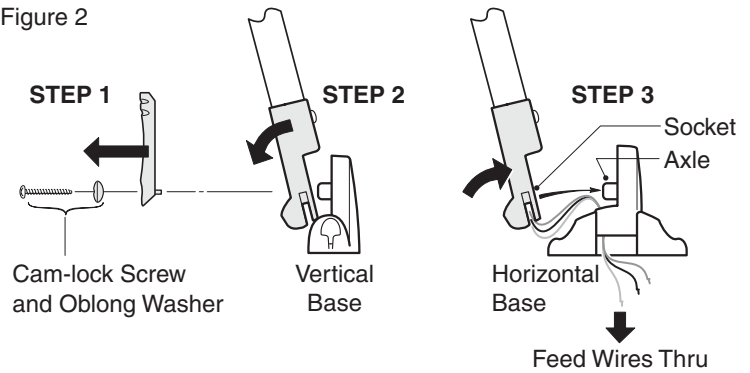
Change Base Type (If Required)

Packaged versions of the Anchor/Masthead Light are shipped with the vertical base installed. To switch to the horizontal base:

1. Carefully remove the cam-lock screw and oblong washer. Set aside for reinstallation (Figure 2).
2. Pivot the base axle out of its socket. Note position of the 3 wires in the base slot. Remove the vertical base.
3. Insert wires through slot of the horizontal base. Install in reverse order.

For windshield, on horizontal

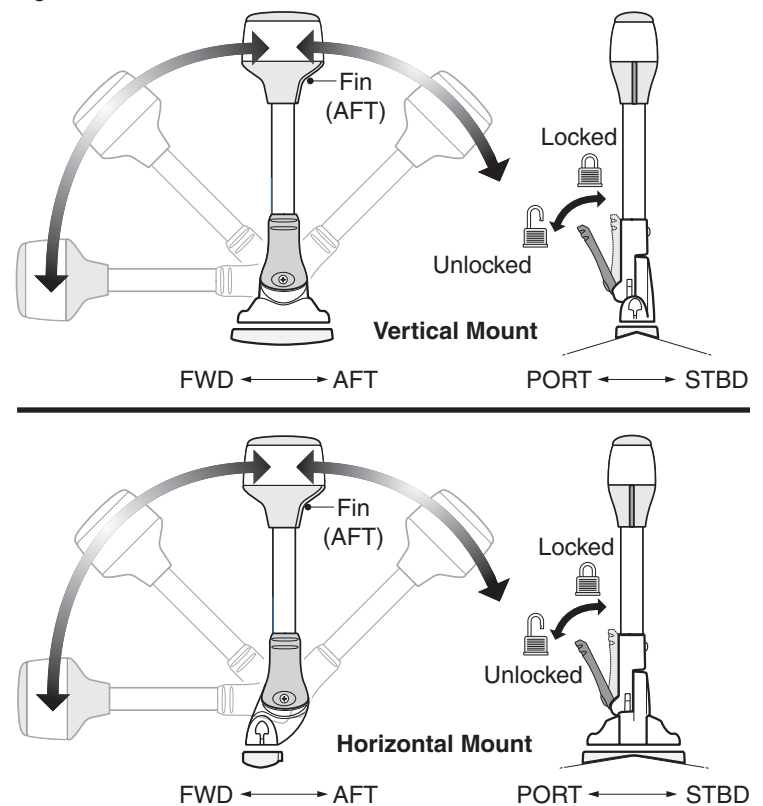
Figure 2



Install Light

1. Release cam-lock adjustment handle and adjust light to vertical position. (Figure 3)
2. Place light in selected position. BE SURE THAT FIN IS ALIGNED TOWARD STERN.
3. Use provided adaptors, if necessary, to allow installation on angled windshields.

Figure 3



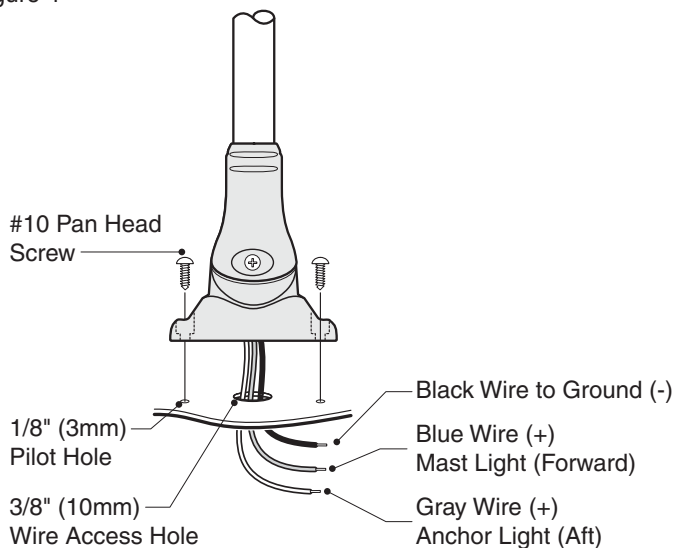
4. Using the base as a template, mark the two mounting hole locations and one wire access hole. (Figure 4)

CAUTION

Position wire access hole carefully, especially on aluminum boats, so that wires do not contact the hull.

5. Remove light. Drill two 1/8" (3mm) pilot holes for #10 screws. Drill one 3/8" (10mm) wire access hole.
6. Bring two 16-gauge (+) wires and one 16-gauge (-) wire up through access hole. DO NOT connect power to switch until you read CONNECT POWER TO SWITCH.
7. Use marine-grade waterproof crimp connectors to connect blue wire to one (+) positive lead from 3-position switch; connect gray wire to second (+) lead. Connect (-) negative source to black wire and route to (-) negative terminal on battery.
8. Fasten light to deck with two #10 stainless steel pan head screws. DO NOT OVERTIGHTEN.

Figure 4



CONNECT POWER TO SWITCH

Use ONLY the rated voltage. Higher voltage can damage light and void product warranty. All positive (+) wires must be protected by fuse (2-amp for 12-volt, 1-amp for 24-volt).

1. Use 3-position, double-pole OFF/ON/ON switch. (Figure 5)
2. From the anchor/masthead light, connect gray wire to one (+) switch terminal. This switch position should operate all-round anchor light (both lamps).
3. Connect blue wire to the remaining (+) terminal. This position should operate forward masthead running light only (one lamp forward) and all other navigation lights.
4. Test forward running and anchor lights for proper operation.

ATTWOOD LIMITED WARRANTY

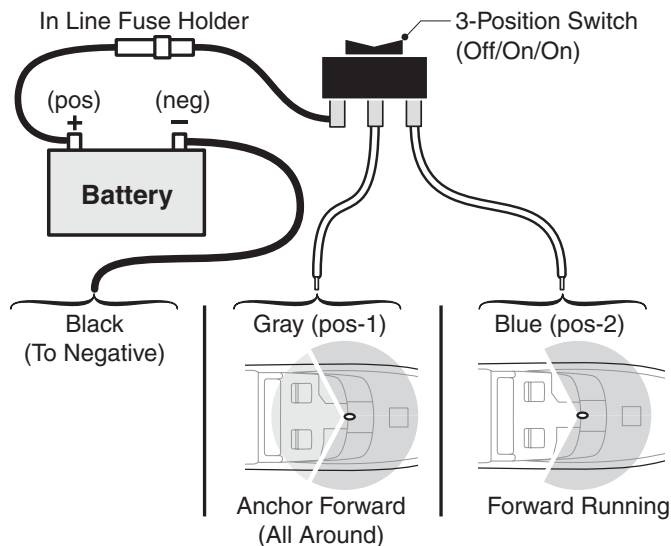
ATTWOOD CORPORATION, 1016 North Monroe, Lowell, Michigan 49331 (“Attwood”) warrants to the original consumer purchaser that Attwood brand products will be free from defects in materials and workmanship under normal use and service for one year from the date of original consumer purchases.

This limited warranty is not applicable if the product has been damaged by accident, improper installation, unreasonable or improper use, lack of proper maintenance, unauthorized repairs or modifications, normal wear and tear, or other causes not arising out of defects in materials or workmanship.

Attwood products are warranted for use on pleasure boats. Any other use—including but not limited to commercial, racing, or non-marine use—are not covered under this warranty. Attwood’s obligation under this warranty is limited to repair of the product at Attwood’s plant or replacement of the products at Attwood’s option without expense to the original consumer purchaser. Any expenses involved in the removal, reinstallation or transportation of the product are not covered by this warranty.

The product must be returned to Attwood’s plant at the address above, postage pre-paid, and insured with proof of original purchase including date. If Attwood is unable to replace the product and repair is not commercially practical or cannot be timely made, or if the original consumer purchaser is

Figure 5



MAINTENANCE

1. To replace lens or lamps, remove top retaining screw and lens.
2. Replace lens with Attwood #912896.
3. Replace lamp(s) with Attwood #9230 (12-volt), #910409 (24-volt).
4. Reinstall lens and retaining screw.
5. To adjust tension on cam-lock adjustment handle: Use Phillips screwdriver to loosen screw in center of handle (Figure 2). Adjust tension so handle releases easily, and also holds light in position when locked.

willing to accept a refund in lieu of repair or replacement, Attwood may refund the purchase price, less an amount for depreciation. The acceptance by Attwood of any product returned or any refund provided by Attwood shall not be deemed an admission that the product is defective or in violation of any warranty. Products that are replaced or for which a refund is issued become the property of Attwood.

THIS WARRANTY IS ATTWOOD’S ONLY EXPRESSED WARRANTY OF THESE PRODUCTS. NO IMPLIED WARRANTY INCLUDING, WITHOUT LIMITATION, THE IMPLIED WARRANTIES OF MERCHANTABILITY AND FITNESS FOR A PARTICULAR PURPOSE, SHALL BE EXTENDED BEYOND THE WARRANTY PERIOD STATED ABOVE FOR EACH PRODUCT. ATTWOOD SHALL NOT BE LIABLE FOR ANY DAMAGES, FOR LOSS OF USE OF THIS PRODUCT, NOR FOR ANY OTHER INCIDENTAL OR CONSEQUENTIAL DAMAGES, COSTS, OR EXPENSES.

Some states do not allow limitations on how long an implied warranty lasts or the exclusion or limitation of incidental or consequential damages, so the above limitations and exclusions may not apply to you. This warranty gives you specific legal rights, and you may have other rights which vary from state to state.

Free Manuals Download Website

<http://myh66.com>

<http://usermanuals.us>

<http://www.somanuals.com>

<http://www.4manuals.cc>

<http://www.manual-lib.com>

<http://www.404manual.com>

<http://www.luxmanual.com>

<http://aubethermostatmanual.com>

Golf course search by state

<http://golfingnear.com>

Email search by domain

<http://emailbydomain.com>

Auto manuals search

<http://auto.somanuals.com>

TV manuals search

<http://tv.somanuals.com>