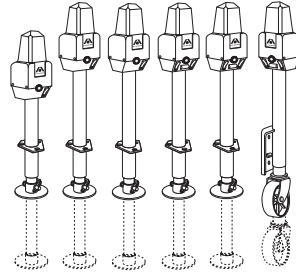




1120 North Main Street • Elkhart, IN 46514
 PHONE: 574-264-2131 FAX: 574-206-9713
 INTERNET: <http://www.atwoodmobile.com>



LITERATURE NUMBER MPD 87083

POWER JACK

RV and Marine Applications

ENGLISH, FRANCAIS (et Canada)

•Installation •Operation •Maintenance

Effective 11/21/07

SAFETY ALERT SYMBOLS

Safety Symbols alerting you to potential personal safety hazards. Obey all safety messages following these symbols.



WARNING

avoid possible injury or death



CAUTION

avoid possible injury and/or property damage

FOR YOUR SAFETY READ ALL INSTRUCTIONS BEFORE INSTALLATION AND OPERATION

Installer: Provide these instructions to the consumer.
Consumer: Keep documents for future reference.
 The Atwood Power Jack is a 12-volt DC motor driven screw jack intended for use on recreational type and marine trailers. Patent # D349800. Jack is used to level trailer or raise and lower coupler for hookup to tow vehicle.



CAUTION

PERSONAL INJURY/PROPERTY DAMAGE

- Retract jack fully before towing.
- Do not use blocks to increase height of jack.
- Use 3500 lb. Heavy Duty Power Jack if you use equalizer bars between the trailer and the tow vehicle.



CAUTION HAND OR FINGER INJURY

- Hold foot pad near the bottom of the tube, when installing foot pad or caster.

10. Place foot pad, or caster for Marine power jack, over the end of jack, align holes, and place pin through holes. A cotter pin clip goes through the hole in the pin, preventing pin from coming out.

OPERATION

1. To raise or lower jack, press switch marked "EXT" or "RET". "Extend" and "Retract" refer to the jack, not the trailer.
2. Release switch when jack nears full retraction or full extension to prevent unnecessary wear on motor clutch.
 - a. When jack reaches its maximum extended or retracted length or maximum load, a clicking noise will be heard. This is the overriding clutch built into the motor to prevent overload. Release switch immediately when clicking is heard. If the jack has been over extended or retracted, it may bind. If so, operate with the manual override handle, per STEP 3 below, to break it free.
 - b. When the heavy duty power jack is being retracted, there may be some audible noise, coming from the brake area. This is normal and is due to the high load for which this jack is rated.
3. **In case of electrical failure-** raise or lower jack as follows:

STANDARD & LIGHTWEIGHT POWER JACKS

 - a. Remove top cover by loosening the four screws.
 - b. Remove screws holding motor to mounting plate.
 - c. Lift motor off jack.
 - d. Turn hex drive nut with wrench or optional manual drive handle, part # 87891 (FIG 1-C).
 - e. To reinstall electric motor on jack, rotate hex drive nut so the pin in the hex drive nut aligns with slot in motor drive shaft.
 - f. Tighten hex nut to 25 inch lbs. torque.
 - g. Reinstall motor and fasten with screws.
 - h. Reinstall top cover and fasten with screws.

SHORT, DELUXE OR MARINE JACKS

Place manual override handle (FIG 1-C) into alignment tube and engage drive pin. Rotate handle clockwise to raise or counter-clockwise to lower the camper.

	LIGHT WT	STANDARD	DELUXE SHORT	HEAVY DUTY	MARINE
Max. Lifting Cap. Lbs	1500	2500	2500	3500	1000

INSTALLATION

1. Block tires of trailer and securely support trailer tongue.
2. The Atwood RV Power Jack is designed to attach to the top surface of an A-frame type tongue having mounting holes typical of the Atwood A-frame couplers FIG 1. Use coupler installation instructions (MPD 87984) if installing coupler. The Marine Power Jack attaches to the side of a straight tongue trailer.
3. A lower support plate must be used for side support of the RV jack on the lower surface of the A-frame FIG 1.

HOLE DIAMETERS: Light Weight 2.02" (MIN) 2.09" (MAX)
 Standard / Short / Deluxe / Heavy Duty 2.20" 2.28"
 Hole in lower support plate must align with hole in coupler.

TO ORDER LOWER SUPPORT PLATE: Light Weight - Atwood MPD 80263
 Standard / Short / Deluxe / Heavy Duty - Atwood MPD 80570
 Using 1/8" fillet weld, No. E6011 AWS welding rod 1/8" diameter, machine amps (AC or DCRP) at 160-180 with 50 volts, weld plate full length on each side to underside of A-frame. The maximum frame height is 6 inches.

4. Place RV jack through holes in coupler and lower support plate, FIG 1-A. Attach with three (3) bolts (3/8" dia. x 5/8" long, grade 5, (provided) FIG 1-B. NOTE: Torque bolts to 15 foot lbs. minimum /20 foot lbs. max.

Note: There must be metal to metal contact between jack and coupler. The three mounting bolts with attached star washers must be used. The star washers are designed to remove paint on the surface of jack flange. The bolts also should remove paint from the mounting holes in coupler. If there is a grounding problem (i.e. no power) check these two surfaces to be sure there is metal to metal contact between jack and coupler. For wiring, see **WIRING ILLUSTRATIONS** FIG 2 & 3.

HEAVY DUTY POWER JACKS

Place manual override handle (FIG 1-C) into alignment tube and engage drive pin. Rotate handle counterclockwise to raise or clockwise to lower the camper.

MAINTENANCE

1. Before each use, inspect jack tubes and replace if bent or damaged.
2. If wiring is connected to battery terminal, inspect at least twice each year for corrosion. Clean with a solution of baking soda and water, then apply a thin coat of grease. NOTE: The motor ground screw (FIG 1-D) and mounting bolts (FIG 1-B) must be cleaned too if a ground continuity problem occurs.

3. Once each year, extend jack as far as possible and clean inner ram tube. Coat tube with light coat of silicone spray lubricant. The Electric Drive Motor Landing Leg system is protected by a 30 amp fuse. If replacement is necessary, replace only with a Buss Type AGC-30 fuse or equivalent, available in automotive supply stores.

 <p>1120 North Main Street • Elkhart, IN 46514 PHONE: 574•264•2131 FAX: 574•206•9713 INTERNET: http://www.atwoodmobile.com</p>	<h2 style="margin: 0;">Power Jack</h2> <h3 style="margin: 0;">TROUBLE SHOOTING GUIDE</h3>
---	---

Effective: 11/21/07

Guides are only intended for use on Atwood® products by service technicians who have successfully completed Atwood® training. This guide should be used in conjunction with the appropriate Instruction Manual provided with the product and any applicable Industry Standards. This is not intended to be a complete list. Please direct questions concerning service of Atwood® products to 866-869-3118 before proceeding.



WARNING

PERSONAL INJURY AND/OR PRODUCT DAMAGE

- If any of the following conditions develop, the trailer must not be used until proper corrective action is taken.

CONDITION WITH SOLUTIONS

MOTOR WILL NOT OPERATE

- No or low voltage Check battery & electrical connections. Must have minimum of 10 VDC
- Jack flange not making good contact to provide adequate ground with coupler surface Clean paint or dirt from coupler frame
- Blown fuse Replace with 30 amp AWG fuse
- Loose wires on ON/OFF switch Secure wire connections
- ON/OFF switch faulty Replace switch
- Motor faulty Replace motor

POOR GROUND

- WHEN BUTTON IS PRESSED ON JACK -
- Jack doesn't operate Inspect motor mounting bolt for Loctite®. If Loctite® found, replace with new 1/4-20 x 3" screw and two lock washers. If bolt unavailable, clean present bolt and hole with wire buffing wheel. Inspect bolt
 - Jack operates only partially up or down, or
 - Jack runs intermittently

hole. If dirty, clean with a 1/4-20 tap.

MOTOR CLUTCH ENGAGES

- Normal if jack leg is at fully retracted or extended position None, but let go of switch when you hear the clutch
- Worn worm gear Replace jack ram
- Dirty inner ram tube Clean ram tube and coat with light coat of silicone spray
- Bent inner ram Replace inner ram
- Clutch faulty Replace motor
- Jack at angle Secure mounting bolts and ensure a support plate is used.
- Excessive tongue weights Determine if jack is adequate for tongue weight.

UTILITY LIGHT DOES NOT WORK

- Loose wires on the ON/OFF switch Secure wire connection
- Bad light bulb Replace bulb

AMP DRAW

- Range of motor 8-45 amps

IMPORTANT CAUTION - If equalizer bars are attached to the tow vehicle and the trailer while operating the power tongue jack, you may experience the motor clutching the moment the jack sees load. This will occur because you are lifting both the tongue of the trailer and the rear of the tow vehicle. The 1500 lb. and 2500 lb. acme screw jacks cannot lift this excessive weight. To overcome this excessive weight, you should upgrade to the 3500 lb. power jack. The ball screw mechanism utilized in this jack should allow you to lift this load.

REPLACEMENT SERVICE PARTS / PIÈCES DÉTACHÉES

ITEM ARTICLE	LIGHT WT LÉGER	STANDARD STANDARD	SHORT NORMAL	DELUXE DE LUXE	HEAVY DUTY LOURD	MARINE MARIN	DESCRIPTION DESCRIPTION
1	87571	87571	87595	87595	87595	87595	Upper Cover Couvercle supérieur
2	87060	87060	87057	87057	87057	87057	Cover Screw Vis du couvercle
3	87055	87055	87942	87942	87942	87942	Motor Ground Screw / Vis Vis de terre du moteur
4	86111	86111	86111	86111	86111	86111	Lock Washer Rondelle de blocage
5	75367	75367	75625	75625	75625	75625	Motor and Terminals Moteur et bornes
6	N/A	N/A	87916	87916	87916	87916	Cover Tube Tube du couvercle
7	N/A	N/A	87108	87108	87108	87108	Bevel Gear Kit Pignon conique
8	N/A	N/A	88002	88002	88002	88002	Gear Housing Cover Couvercle de la boîte de vitesse
9	N/A	N/A	70298	70298	71132	70298	Drive Pin Goupille d'entraînement
10	N/A	N/A	87941	87941	87941	87941	Drive Shaft Arbre d'entraînement
11	87573	87573	87597	87597	87597	87597	Lower Cover Couvercle inférieur
12	N/A	N/A	87585	87585	87585	87585	Wire & Light Bulb* Ampoule électrique*
13	N/A	N/A	87591	87591	87591	87591	Lens / Lentille
14	87035	87035	87035	87035	87035	87035	Hole Plug Bouchon de l'orifice
15	80237	80512	87489	87500	87559	N/A	Jack Hsing & Ram Asy 16" trvl Enveloppe du vérin et corps du cric à course de 16 po
16	N/A	N/A	87847	87847	87847	87847	Washer Support Support de rondelle
17	70229	70229	70667	70667	70667	70667	Pin / Tige
18	87568	87568	87598	87598	87598	87598	Ground Wire Fil de terre
19	N/A	N/A	87586	87586	87586	87586	Light Switch Commutateur d'éclairage
20	87570	87570	87570	87570	87570	87570	Motor Switch Commutateur du moteur
21	87327	87327	87327	87327	87327	87327	Strain Relief Bushing Bague de bride de cordon
22	N/A	N/A	87599	87599	87599	87599	Jumper Wire & Fuse Fil de connexion et fusible
23	N/A	N/A	N/A	N/A	N/A	N/A	Fuse▲ / Fusibles▲
24	87176	87176	87176	87176	87176	87176	Mounting Bolt / Boulon
25	OPTIONAL	OPTIONAL	87891	87891	87891	87891	Manual Drive Handle Manette de commande manuelle
26	70269	70269	70269	70269	N/A	70269	Cotter Pin Goupille fendue
27	80238	87021	87021	87021	87021	--	Round Foot Pad Coupelle ronde
28	87709	87709	87709	87709	70215	87709	Clevis Pin Axe de chape
29	87077	87077	N/A	N/A	NA	N/A	Hex Drive Nut Écrou de commande hexagonal
30	87569	87569	N/A	N/A	N/A	N/A	Fuse Wire Fil du fusible
31						87150	Bracket / Patte
32						84037	Caster / Roue pivotante

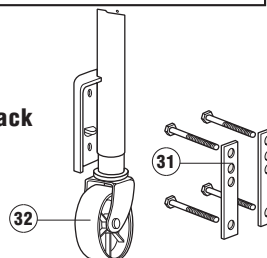
*912 type T5 12 candle power

*912 type T5 12 candelas

▲Buss Type AGC-30 amp fuse

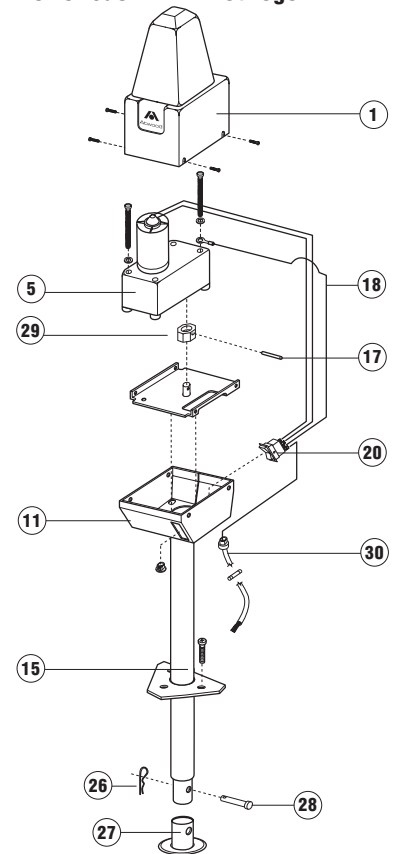
▲Buss type AGC-30 à fusible

Marine Power Jack



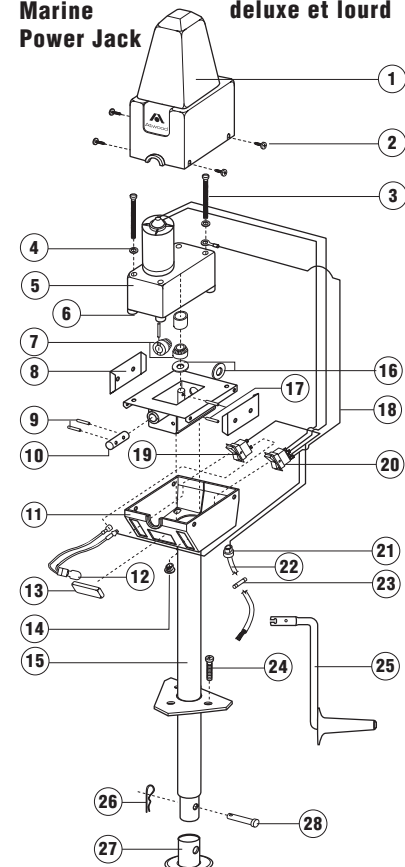
Standard & Lightweight Power Jack

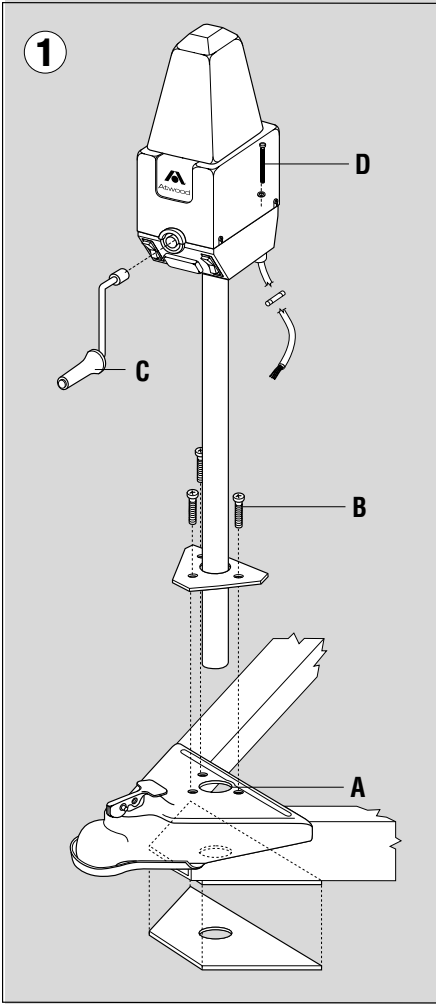
Cric électrique service normal et léger



Short, Deluxe, Heavy Duty & Marine Power Jack

Cric électrique service court, deluxe et lourd

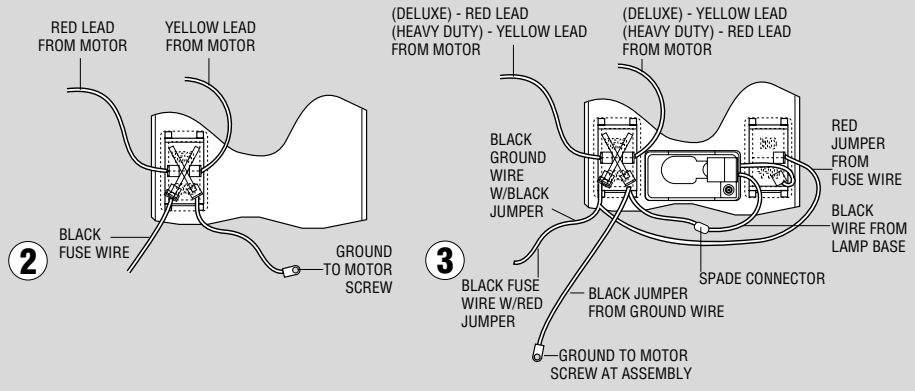




POWER JACK WIRING ILLUSTRATIONS

Lightweight & Standard

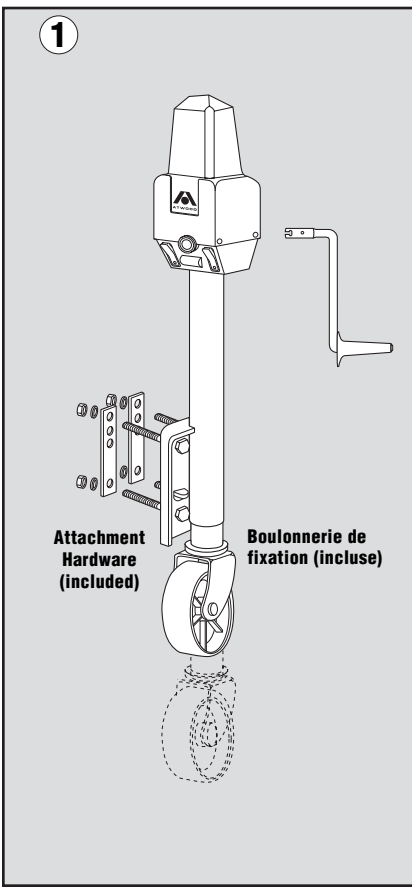
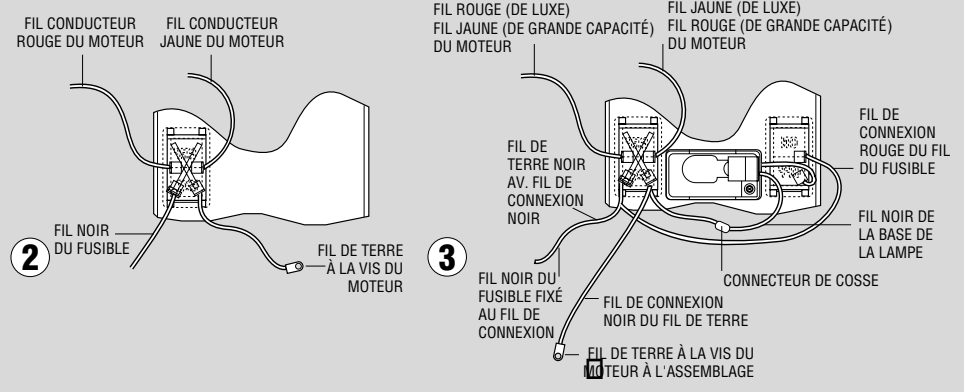
Short, Deluxe & Heavy Duty



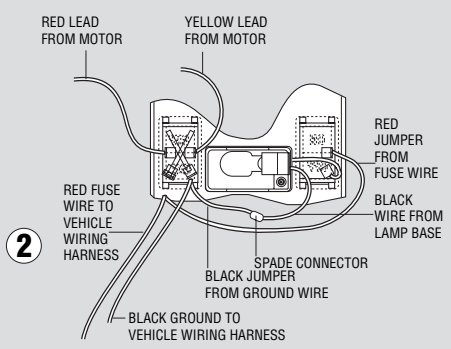
CRIC ÉLECTRIQUE SCHÉMAS DE CABLAGE

Cric Électrique Standard

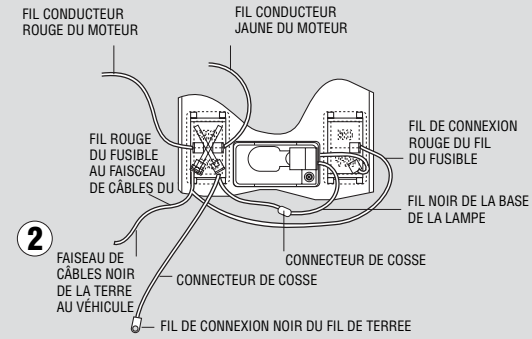
Cric Électrique De Luxe et Haute Capacité



MARINE POWER JACK WIRING ILLUSTRATIONS



CRIC ÉLECTRIQUE MARIN SCHÉMA DE CÂBLAGE



ATWOOD POWER JACK LIMITED WARRANTY

Atwood Mobile Products warrants to the original owner this product will be free of defects in material and workmanship for a period of two years from the date of purchase. Atwood's liability hereunder is limited to the replacement of product, repair of product or replacement of product with a reconditioned product, at the discretion of the manufacturer. The warranty is void if the product has been damaged by accident, unreasonable use, neglect, tampering or other causes not arising from defects in material or workmanship. The warranty extends to the original consumer purchaser of the product only, and is subject to the following conditions:

1. For two (2) years commencing with the date of purchase, Atwood will provide the replacement or repair of any Hardware System and Components that are found to be defective by Atwood in material or workmanship.
2. In the event of a warranty claim, the Original Owner must contact the Atwood Consumer Service Department, 1120 North Main, Elkhart, IN 46514, telephone: 866-869-3118, fax: 574-206-9655. Warranty claim service must be performed as approved by the Atwood Consumer Service Department. Warranty replacement hardware systems and components or parts will be furnished freight prepaid, labor cost to repair or replace will be limited to the amount of the original purchase price of the systems and components. The replaced warranty products or parts become the property of Atwood Mobile Products and must be returned to the Atwood Consumer Service Department freight prepaid, unless prior arrangements have been agreed to.
3. This limited warranty is valid only when the product is applied, installed, maintained and operated in accordance with this Atwood Installation, Maintenance and Operating Manual. Any deviation from these recommended specifications must be approved in writing by Atwood.
4. Any implied warranties are limited to the duration of this limited warranty as stated above. Atwood does not assume responsibility for consequential damage or loss, including loss of use of vehicle, loss of time, inconvenience, expense for gasoline, telephone, travel, lodging, loss or damage to personal properties, or loss of revenues. Some states do not allow limitations on how long an implied warranty lasts or limitations on consequential damages, so the above limitations may not apply to you. This limited warranty gives you specific legal rights which may vary from state to state.

Free Manuals Download Website

<http://myh66.com>

<http://usermanuals.us>

<http://www.somanuals.com>

<http://www.4manuals.cc>

<http://www.manual-lib.com>

<http://www.404manual.com>

<http://www.luxmanual.com>

<http://aubethermostatmanual.com>

Golf course search by state

<http://golfingnear.com>

Email search by domain

<http://emailbydomain.com>

Auto manuals search

<http://auto.somanuals.com>

TV manuals search

<http://tv.somanuals.com>