

**M-AUDIO**

ProKeys  
Sono 61

---

Quick Start Guide

## Introduction

Congratulations on your purchase of M-Audio ProKeys Sono 61. ProKeys Sono 61 is a semi-weighted 61-key digital piano, a USB-compatible MIDI controller, and a computer audio interface. Play the on-board premium keyboard sounds as a standalone instrument, or plug a microphone and guitar into ProKeys Sono to record audio utilizing the included recording software. ProKeys Sono instantly transforms your computer into an incredibly versatile music studio. We recommend you spend a few minutes reviewing this Quick Start Guide to ensure proper setup.

## ProKeys Sono 61 Features

### Keyboard:

- ▶ 61 semi-weighted, velocity sensitive keys
- ▶ 5 premium quality voices (Grand Piano, Bright Piano, Electric Piano, Organ, Clavinet)
- ▶ Complete General MIDI (GM) sound set with 128 built-in sounds for full playback of MIDI files
- ▶ On-board reverb and chorus effects
- ▶ Pitch Bend wheel
- ▶ Modulation wheel; MIDI re-assignable
- ▶ Voice Volume knob; MIDI re-assignable
- ▶ Octave up/down buttons; MIDI re-assignable
- ▶ Sustain foot pedal input; MIDI re-assignable
- ▶ MIDI output port
- ▶ 40-note maximum polyphony\*
- ▶ Edit mode for advanced functions and programming
- ▶ Bus-powered through USB or DC power for standalone functionality (DC power adaptor sold separately)
- ▶ Class-compliant operation: no driver installation required—simply connect the keyboard and power on

\* Stereo premium voices operate at a maximum polyphony of 20 notes.

### Built-in Audio Interface:

- ▶ 16-Bit, 44.1 kHz, 2-input, 2-output audio interface
- ▶ XLR microphone, 1/4" instrument, and stereo RCA input connectors
- ▶ Two rear-panel 1/4" audio outputs
- ▶ Two front-panel 1/4" headphone outputs
- ▶ Dedicated Instrument and Microphone gain control knobs with signal and peak LEDs
- ▶ Direct Monitor knob for near-zero latency hardware monitoring
- ▶ Master Volume slider

## What's in the Box?

- ▶ M-Audio ProKeys Sono 61 keyboard
- ▶ Printed Quick Start Guide
- ▶ M-Audio ProKeys Sono Drivers and Documentation CD-ROM
- ▶ Bundle Software Disc
- ▶ USB cable

## About this Guide

*This Quick Start Guide covers:*

- ▶ Basic Operation of ProKeys Sono 61
- ▶ Driver Installation for ProKeys Sono 61
- ▶ Third Party Software Configuration

## Basic Operation of ProKeys Sono 61

1. Use the provided USB cable to connect ProKeys Sono 61 to an available USB port on your computer. The USB cable not only powers the keyboard but also transmits MIDI and audio data to and from your computer.
2. Make sure that the power switch on the back of the keyboard is in the "on" position. ProKeys Sono is now ready to be used – no additional installation steps are required for basic operation.\*\*
3. Connect the two 1/4" outputs on the rear panel of ProKeys Sono to powered monitors, an amplifier, or a mixer. You may also listen through headphones by connecting one or two sets of headphones to the 1/4" stereo headphone outputs on ProKeys Sono 61.
4. Be sure the Voice Vol knob is at a reasonable listening level.
5. Play the keyboard.

ProKeys Sono can be used without a computer. This is referred to as standalone operation. An optional 9V, 500mA center-positive power supply (sold separately), or a USB-type power supply (also sold separately) is required for standalone operation.



*optional USB-type external power supply*

→ **NOTE:** Above instructions demonstrate how to trigger the voices built into ProKeys Sono 61. ProKeys Sono can also be used to trigger sounds generated by software synthesizers running on a connected computer or trigger sounds on external MIDI devices connected to the ProKeys MIDI Out port. See the User Guide on the included ProKeys Sono CD-ROM for additional information.

**\*\*IMPORTANT:** When using ProKeys Sono class-compliant (i.e., without installing drivers) in Windows, the computer will search for the M-Audio DFU (device firmware upgrade tool) and display a Found New Hardware Wizard. The M-Audio DFU is a component of ProKeys Sono 61 that is enabled when the M-Audio drivers are installed, but is not necessary for class-compliant operation. You have the following options:

A. Cancel the Found New Hardware Wizard and start using ProKeys Sono immediately.

The Found New Hardware Wizard will appear every time your computer detects that the device is connected (e.g. upon computer or device restart, or disconnecting/reconnecting ProKeys Sono).

B. Follow the Found New Hardware Wizard until it gives the option not to be prompted to install this hardware again.

**Windows Vista Users:**

- ▶ Select "Don't show this message again for this device" in the first screen that appears.
- ▶ Click "Continue" in the confirmation screen that follows.

**Windows XP Users:**

- ▶ In the first screen, select "No, not this time" and click "Next"
- ▶ In the second screen, select "Install the software automatically" and click "Next"
- ▶ Finally, make sure the check box labeled "Don't prompt me again to install this software" is active, then click Finish.

C. Install the M-Audio drivers as described in the "Driver Installation for ProKeys Sono 61" section of this Quick Start Guide. After these drivers have been installed, the Found New Hardware Wizard for the M-Audio DFU will no longer be displayed.

### The ProKeys Sono 61 Voice Demos

ProKeys Sono has a built-in demo song for each instrument sound. To hear these demos:

1. Press the Edit Mode button so that the Edit mode LED lights.
2. Press one of the Voice Select buttons.

Demo playback can be stopped by pressing either the Edit Mode button or the Reverb button.

### Using the Audio Inputs

A dynamic microphone can be connected to the XLR input located on the rear panel, and an instrument such as a guitar or bass can be connected to the 1/4" input jack, also located on the rear panel. †

Each of these two inputs has an independent preamp featuring a dedicated gain control knob, and signal and clip LEDs. Two analog RCA inputs are also located on the back panel. Signal from these inputs is mixed with the Microphone and Instrument input signals and routed to the 1/4" output jacks.

† **IMPORTANT:** Be sure the Mic and Inst. Gain knobs are turned down before connecting equipment to these two input jacks. Failure to do this can result in a loud pop or feedback which can damage your speakers or hearing.

### Additional Features in Edit Mode

ProKeys Sono provides many additional MIDI features and programming options. Pressing the Edit Mode button puts the keys of the keyboard into Edit mode. This mode enables you to configure internal features of ProKeys Sono and transmit advanced MIDI messages. Consult the User Guide found on the included M-Audio ProKeys Sono Drivers and Documentation CD-ROM for a complete description of the ProKeys Sono Edit mode.

### MIDI Connections

You can connect the ProKeys Sono 61 MIDI Output port to an external MIDI device's MIDI Input port. This enables you to control an external synthesizer or sound module using ProKeys Sono as a standalone keyboard controller. Alternatively, the MIDI Output port can be configured to serve as a USB to MIDI interface. In this mode, ProKeys Sono 61 transmits MIDI data from sequencing software running on your computer to MIDI devices connected to the ProKeys Sono MIDI Output port. More information on this feature is included in the User Guide found on the M-Audio ProKeys Sono Drivers and Documentation CD-ROM.

A sustain pedal can also be connected to the 1/4" Sustain pedal jack on the back of ProKeys Sono.

### Third Party Software Configuration

With ProKeys Sono connected to a computer, any MIDI or audio capable software application running on the same computer should recognize ProKeys Sono as a MIDI and audio input and output device. However, you may need to configure the software to send and receive MIDI and audio data to and from ProKeys Sono 61. This often entails going into the Options or Device Setup menu of your music software application and selecting “M-Audio ProKeys Sono 61” or “USB Audio Device” as the MIDI and audio input and output device.

In Windows XP, ProKeys Sono will appear as “USB Audio Device” if the M-Audio drivers have not been installed. After installing these drivers, ProKeys Sono should appear as “M-Audio ProKeys Sono 61.”<sup>††</sup> Please consult your software’s documentation for instructions on how to configure the software for use with external MIDI devices.

<sup>††</sup> The actual ProKeys Sono name displayed by the computer may vary slightly depending on what recording software is being used.

## Driver Installation for ProKeys Sono 61

Your computer will recognize ProKeys Sono without the need to install additional drivers. This gives immediate access to all audio inputs and outputs as well as to the built-in MIDI interface. However, as you become more familiar with the ProKeys Sono keyboard, you may wish to take advantage of this product’s additional professional features by installing the ProKeys Sono 61 drivers.

Installing the ProKeys Sono drivers eliminates the M-Audio DFU message which appears when connecting ProKeys Sono as a class-compliant device. ProKeys Sono drivers in Windows are also useful for improving audio performance by reducing latency.

Latency is the time it takes for MIDI input (when using software synthesizers) or audio input signal to appear as audio at the ProKeys Sono audio outputs for monitoring purposes. In Windows, installing the ProKeys Sono drivers allows you to use your new keyboard’s MIDI features with more than one application at the same time (multi-client), send large SysEx messages, and to use ProKeys Sono with a qualified version of the Pro Tools M-Powered recording software. On a Macintosh computer, installing the M-Audio drivers enables you to use your ProKeys Sono with a qualified version of the Pro Tools M-Powered recording software.

### IMPORTANT:

Disconnect ProKeys Sono from your computer until the appropriate driver files have been copied to your hard drive. Be sure to leave your ProKeys Sono disconnected until instructed to connect it.

### Windows XP and Windows Vista (32-bit editions)

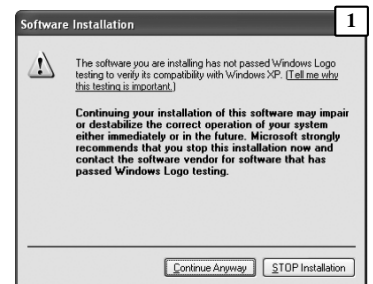
#### To install drivers for ProKeys Sono 61:

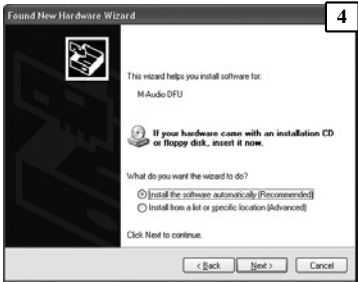
1. We recommend that you download the most recent drivers by going to the Support > Drivers page at [www.m-audio.com](http://www.m-audio.com). This ensures that you have the newest drivers available. If you do not have Internet access, insert the M-Audio ProKeys Sono Drivers and Documentation CD-ROM into your computer to install the drivers that came with your interface.

- a. If you are installing drivers from the M-Audio ProKeys Sono Drivers and Documentation CD-ROM, the computer will automatically display the interactive install screen when the CD-ROM is inserted. If your computer fails to launch this application, you can manually start it by clicking on Start > My Computer<sup>†</sup> > ProKeys Sono. Next, select your product from the menu and click Install.
- b. If you are installing drivers from [www.m-audio.com](http://www.m-audio.com), simply double-click the file once it has finished downloading.

<sup>†</sup> If you are using Windows Vista, “My Computer” will be labeled “Computer” in this step.

2. Follow the driver installer’s on-screen direction prompts.
3. At various points in this installation process, you may be notified that the driver being installed has not passed Windows Logo Testing, or asked whether the program you wish to run is a trusted application. Click “Continue Anyway” (Windows XP) **1** or “Install” (Windows Vista) **2** to proceed with installation.
4. Click “Finish” once the installer has completed the installation.
5. Use the provided USB cable to connect ProKeys Sono 61 to an available USB port on your computer.
6. Make sure that the power switch on the back of the keyboard is in the “on” position. If you are using a Windows Vista computer, your ProKeys Sono is now ready to use. If you are using Windows XP, proceed to steps 7-10.
7. Windows XP will identify the interface and will ask if you want to search the Internet for a driver. Select “No, not this time,” and click “Next” to continue. **3**



8. Windows XP will display a Found New Hardware Wizard. Select "Install the software automatically," and click "Next" to continue. 
9. Once the Wizard has completed, click "Finish." You may be presented with a second Found New Hardware Wizard. If so, then repeat steps 7-9.
10. When the installation is complete, you will see a message stating "Your new hardware is installed and ready to use."

### Macintosh

M-Audio driver installation is not required in order to use ProKeys Sono 61 with your Macintosh OS X computer. However, these drivers are necessary if you wish to use the keyboard with a qualified version of the Pro Tools M-Powered recording software. Instructions for installing the ProKeys Sono 61 Mac OS X drivers can be found in the User Guide found on the included M-Audio ProKeys Sono Drivers and Documentation CD-ROM.

---

## Important Note about System Upgrades:

Please check the M-Audio driver download page at <http://www.m-audio.com/drivers> for the availability of an updated driver before you decide to install operating system updates.

Before new M-Audio device drivers are released, they are tested for use with the operating system versions that are available at that time. When updates for an operating system are released by Microsoft or Apple, all M-Audio device drivers have to be re-tested and possibly updated to ensure proper operation.

M-Audio recommends refraining from installing operating system updates until a driver has been posted to the M-Audio website for that specific operating system.

---

## Warranty Terms and Registration

### Warranty Terms

M-Audio warrants products to be free from defects in materials and workmanship, under normal use and provided that the product is owned by the original, registered user. Visit [www.m-audio.com/warranty](http://www.m-audio.com/warranty) for terms and limitations applying to your specific product.

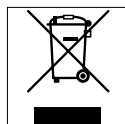
### Warranty Registration

Immediately registering your new M-Audio product entitles you to full warranty coverage and helps M-Audio develop and manufacture the finest quality products available. Register online at [www.m-audio.com/register](http://www.m-audio.com/register) to receive FREE product updates and for the chance to win M-Audio giveaways.

*ESD and Fast Transient may cause the unit to temporarily malfunction. Switch off and on again to restore normal operation.*

© 2008 Avid Technology, Inc. All rights reserved. Product features, specifications, system requirements and availability are subject to change without notice. Avid, M-Audio and ProKeys Sono 61 are either trademarks or registered trademarks of Avid Technology, Inc. All other trademarks contained herein are the property of their respective owners.

**WARNING:** This product contains chemicals, including lead, known to the State of California to cause cancer, and birth defects or other reproductive harm. **Wash hands after handling.**



## M-Audio USA

5795 Martin Rd., Irwindale, CA 91706

### Technical Support

web . . . . . www.m-audio.com/tech  
tel (pro products) . . . . . (626) 633-9055  
tel (consumer products) . . . . . (626) 633-9066  
fax (shipping) . . . . . (626) 633-9032

### Sales

e-mail . . . . . sales@m-audio.com  
tel . . . . . 1(866) 657-6434  
fax . . . . . (626) 633-9070

**Web** . . . . . www.m-audio.com

## M-Audio U.K.

Floor 6, Gresham House, 53 Clarendon Road, Watford  
WD17 1LA, United Kingdom

### Technical Support

e-mail . . . . . support@maudio.co.uk  
tel (Mac and PC support) . . . +44 (0)1753 658630

### Sales

tel . . . . . +44 (0)1923 204010  
tel . . . . . +44 (0)1923 204039

**Web** . . . . . www.maudio.co.uk

## Benelux

### Technical Support

Belgium tel . . . . . +32 22 54 88 93  
Holland tel . . . . . +31 35 625 0097

## M-Audio France

Floor 6, Gresham House, 53 Clarendon Road, Watford  
WD17 1LA, United Kingdom

### Renseignements Commerciaux

tel . . . . . 0 810 001 105  
email . . . . . info@m-audio.fr

### Assistance Technique

PC . . . . . 0 820 000 731  
Mac . . . . . 0 820 391 191  
e-mail (PC) . . . . . support@m-audio.fr  
email (Mac) . . . . . mac@m-audio.fr  
fax . . . . . +33 (0)1 72 72 90 52

**Web** . . . . . www.m-audio.com

## M-Audio Germany

Kuhallmand 34, D-74613 Ohringen, Germany

### Technical Support

email . . . . . support@m-audio.de  
tel . . . . . +49 (0)7941 - 9870030  
tel . . . . . +49 (0)7941 - 98 70070

### Sales

e-mail . . . . . info@m-audio.de  
tel . . . . . +49 (0)7941 98 7000  
fax . . . . . +49 (0)7941 98 70070

**Web** . . . . . www.m-audio.de

## M-Audio Canada

1400 St-Jean Baptiste Ave. #150, Quebec City,  
Quebec G2E 5B7, Canada

### Technical Support

e-mail . . . . . techcanada@m-audio.com  
tel . . . . . (418) 872-0444  
fax . . . . . (418) 872-0034

### Sales

e-mail . . . . . infocanada@m-audio.com  
tel . . . . . (866) 872-0444  
fax . . . . . (418) 872-0034

**Web** . . . . . www.m-audio.ca

## M-Audio Japan

アビッドテクノロジー株式会社|エムオーディオ事業部:  
〒460-0002 愛知県名古屋市中区丸の内2-18-10  
Avid Technology K.K.:2-18-10 Marunouchi,  
Naka-Ku, Nagoya, Japan 460-0002

### カスタマーサポート (Technical Support)

#### e-mail

win-support@m-audio.jp

#### e-mail (Macintosh 環境専用)

mac-support@m-audio.jp

#### tel

052-218-0859(10:00~12:00/13:00~17:00)

### セールスに関するお問い合わせ (Sales)

#### e-mail

info@m-audio.jp

#### tel

052-218-3375

#### fax

052-218-0875

### Web

www.m-audio.jp

## Free Manuals Download Website

<http://myh66.com>

<http://usermanuals.us>

<http://www.somanuals.com>

<http://www.4manuals.cc>

<http://www.manual-lib.com>

<http://www.404manual.com>

<http://www.luxmanual.com>

<http://aubethermostatmanual.com>

Golf course search by state

<http://golfingnear.com>

Email search by domain

<http://emailbydomain.com>

Auto manuals search

<http://auto.somanuals.com>

TV manuals search

<http://tv.somanuals.com>