

## SPECIFICATION

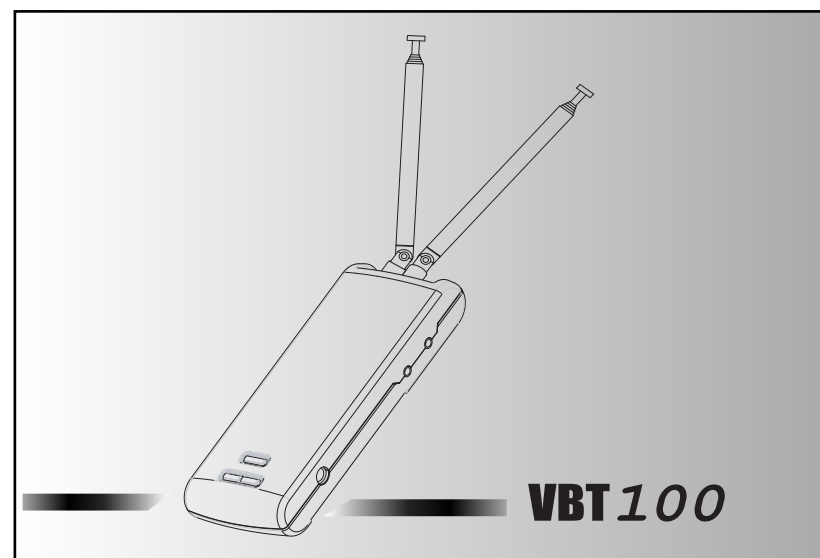
|                     |  |
|---------------------|--|
| Power Input         | 12V DC   |
| System              | NTSC   |
| Available Channels  | VHF 2~13/UHF 14~69   |
| Operating Temp      | 14 ~122 Fahrenheit   |
| Storage Temp        | 0 ~122 Fahrenheit  |
| Current Consumption | 1.5W   |
| Features            | 1 × External Antenna Input<br>1 × AV Input<br>1 × AC to DC 12V Adapter |
| Dimensions          | 1.9 X 5.9 X 1.0 Inch   |
| Net Weight          | 0.35 Pounds  |

FORM NUMBER 128-6529

# OWNER'S MANUAL

## TV TUNER

**VB1100**



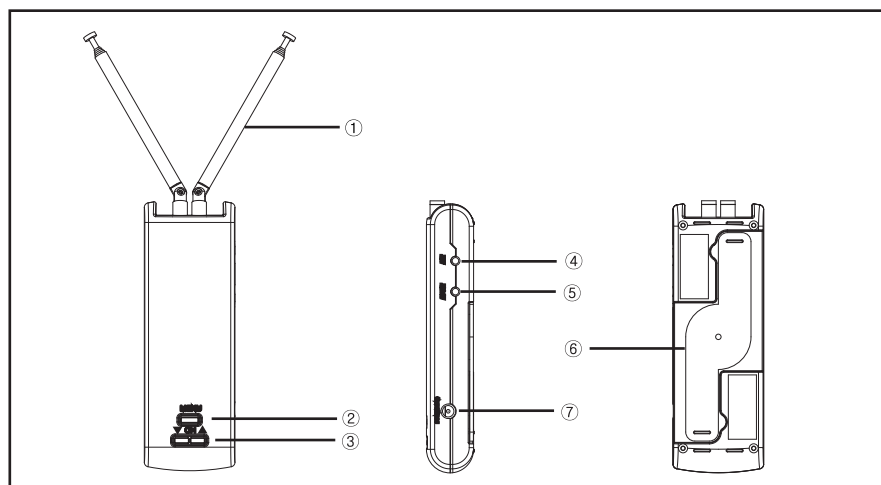
- EXTERNAL ANTENNA INPUT
- 1 A/V OUTPUT
- INPUT VOLATAGE 12V
- ELECTRONIC TUNING SYSTEM
- AC AND DC VOLTAGE ADAPTERS

## CAUTION

(Improper handling may result in injury.)

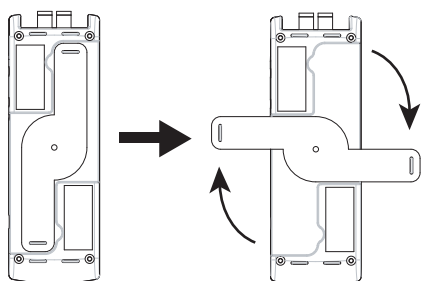
- ! Every connection should be tight and in the right direction for the best results.
- ! Don't watch TV while driving.
- ! Avoid direct heat or moisture when installing this unit.
- ! To avoid an electric shock potential, do not attempt to service. Contact your local service agency.
- ! Use the supplied AC adapter or car DC adapter.
- ! Install on the flat surface and unfold support bar.

## TV TUNER PARTS



- |                       |              |
|-----------------------|--------------|
| ① ANTENNA             | ② MENU       |
| ③ CHANNEL UP AND DOWN | ④ ANTENNA IN |
| ⑤ A/V OUT             | ⑥ STAND      |
| ⑦ POWER IN(12V DC)    |              |

## UNFOLDING SUPPORT BAR



1. Before using the tuner, rotate the support bar clockwise. Make certain the unit is stable before extending and rotating the antenna rods.

## CONNECTING POWER

1. Connect the TV tuner to a monitor by connecting cord to A/V out jack(5).
2. Connect to power source using AC adapter or car DC adapter (12V)(7).
3. Pull out the antenna rod(1) then rotate the rod to find the best reception.

## AUTO CHANNEL PROGRAMING

1. The "QUICK MEMORY" and "AUTO MEMORY" function is a convenient function which allows you to automatically tune in the available channels with just one button.
2. To enable the QUICK MEMORY function, push menu button(2) for 3~4 seconds. "QUICK MEMORY" will be displayed on the screen. It will

take about 20 seconds to scan all channels.

3. Generally the quick memory function finds most of the available channels but sometimes you need the "AUTO MEMORY" function for weaker channels. To enable the "AUTO MEMORY" function, push channel up/down buttons(3) for 3~4 seconds. "AUTO MEMORY" will appear on the screen. Channel scanning will take approximately 30~40 seconds.

## MANUAL CHANNEL PROGRAMING

1. To add the channel manually, push menu button(2) two times, then "SKIP MODE-ON" will appear on the screen. Push the channel up or down button(3) to change skip mode from "ON" to "OFF". Push menu button(2) to exit menu. Select desired channels one by one with channel up or down button(3). When you push the menu button(2), if the channel is not a memorized one, "ADD CH-NO" will appear, otherwise "ERASE CH-NO" will appear. Then push channel up or down button(3) to add or erase the channel manually. Then push the menu button(2) again then up or down button(3) to set skip mode "ON". Then press the menu button(2). When you finished, push channel up or down button(3) to check the memorized channels.

## INCLUDE WARRANTY AS AS SEPARATE ITEM



### 12 MONTH LIMITED WARRANTY

*Applies to Audiovox Mobile Video Products*

AUDIOVOX ELECTRONICS CORP. (the Company) warrants to the original retail purchaser of this product that should this product or any part thereof, under normal use and conditions, be proven defective in material or workmanship within 12 months from the date of original purchase, such defect(s) will be repaired or replaced with reconditioned product (at the Company's option) without charge for parts and repair labor.

To obtain repair or replacement within the terms of this Warranty, the product is to be delivered with proof of warranty coverage (e.g. dated bill of sale), specification of defect(s), transportation prepaid, to the Company at the address shown below.

This Warranty does not extend to the elimination of externally generated static or noise, to correction of antenna problems, to costs incurred for installation, removal or reinstallation of the product, or to damage to tapes, discs, speakers, accessories, or vehicle electrical systems.

This Warranty does not apply to any product or part thereof which, in the opinion of the Company, has suffered or been damaged through alteration, improper installation, mishandling, misuse, neglect, accident, or by removal or defacement of the factory serial number/bar code label(s). THE EXTENT OF THE COMPANY'S LIABILITY UNDER THIS WARRANTY IS LIMITED TO THE REPAIR OR REPLACEMENT PROVIDED ABOVE AND, IN NO EVENT, SHALL THE COMPANY'S LIABILITY EXCEED THE PURCHASE PRICE PAID BY PURCHASER FOR THE PRODUCT.

This Warranty is in lieu of all other express warranties or liabilities. ANY IMPLIED WARRANTIES, INCLUDING ANY IMPLIED WARRANTY OF MERCHANTABILITY, SHALL BE LIMITED TO THE DURATION OF THIS WRITTEN WARRANTY. ANY ACTION FOR BREACH OF ANY WARRANTY HEREUNDER INCLUDING ANY IMPLIED WARRANTY OF MERCHANTABILITY MUST BE BROUGHT WITHIN A PERIOD OF 24 MONTHS FROM DATE OF ORIGINAL PURCHASE. IN NO CASE SHALL THE COMPANY BE LIABLE FOR ANY CONSEQUENTIAL OR INCIDENTAL DAMAGES FOR BREACH OF THIS OR ANY OTHER WARRANTY, EXPRESS OR IMPLIED, WHATSOEVER. No person or representative is authorized to assume for the Company any liability other than expressed herein in connection with the sale of this product.

Some states do not allow limitations on how long an implied warranty lasts or the exclusion or limitation of incidental or consequential damage so the above limitations or exclusions may not apply to you. This Warranty gives you specific legal rights and you may also have other rights which vary from state to state.

**U.S.A. :** AEC 150 MARCUS BLVD., HAUPPAUGE, NEW YORK 11788 ✉ 1-800-645-4994

**CANADA :** CALL 1-800-645-4994 FOR LOCATION OF WARRANTY STATION SERVING YOUR AREA

128-5495C

## Free Manuals Download Website

<http://myh66.com>

<http://usermanuals.us>

<http://www.somanuals.com>

<http://www.4manuals.cc>

<http://www.manual-lib.com>

<http://www.404manual.com>

<http://www.luxmanual.com>

<http://aubethermostatmanual.com>

Golf course search by state

<http://golfingnear.com>

Email search by domain

<http://emailbydomain.com>

Auto manuals search

<http://auto.somanuals.com>

TV manuals search

<http://tv.somanuals.com>