

INSTALLATION INSTRUCTIONS
FOR
50-0285x-015 SERIES 1181279
CHEVROLET VENTURE
OVERHEAD CONSOLE for use with FLIPDOWN VIDEO SYSTEM



These instructions are intended for use only by experienced professionals in the automotive customizing business. Special tools and equipment, as well as specialized handling and care of product during installation, may be required. Before beginning this installation, carefully read through the following instructions. **Use extreme care when cutting headliner material.** Check for wiring or other componentry above headliner material. Cut only where indicated.

Materials/ Tools required for this installation:

- | | |
|----------------------------|--|
| 1. #2 Phillips screwdriver | 2. Powered screwdriver or drill with adapter |
| 3. T-15 TORX bit driver | 4. Razor knife or similar |
| 5. Awl or similar tool | 6. 1/4" hex socket bit |
| 7. 18 GA wire 4' | 8. Audiovox Series 640/650 Video Module |

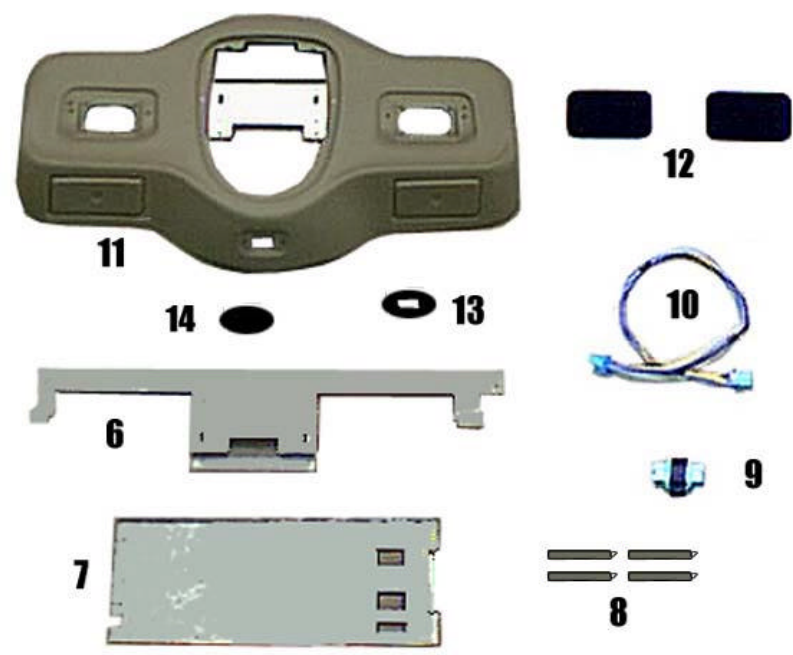
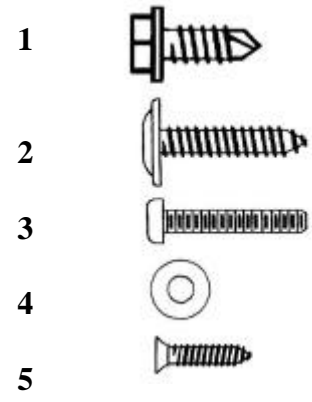
NOT FOR VEHICLES EQUIPPED WITH SUN ROOF.

INSTALLATION INSTRUCTION # 44-0034A

MATERIALS PROVIDED FOR INSTALLATION:

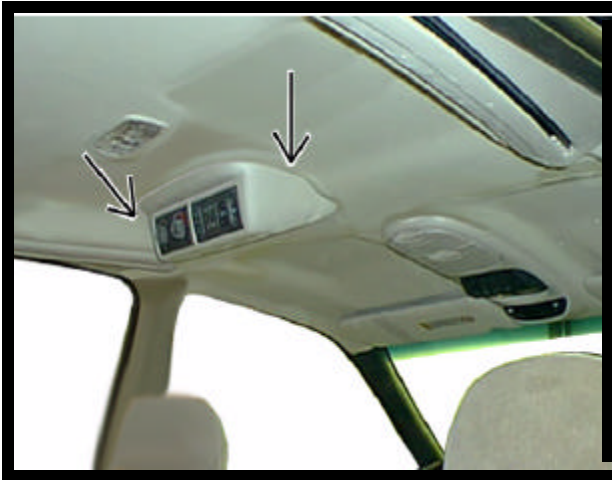
June 2, 1999
Printed in the U.S.A

ITEM	Description	QTY
1	SCREW, # 10 X 1/2" HWH	7
2	SCREW, # 8 X 3/4" PWH	6
3	SCREW, 6-32 x 3/4" PPH	6
4	WASHER, # 6	4
5	SCREW, # 6 X 1/2" PFH	2
6	FRONT MOUNTING BRACKET	1
7	REAR MOUNTING BRACKET	1
8	SWITCH MOUNTING BRACKET	4
9	ADAPTER	1
10	WIRE HARNESS	1
11	CONSOLE	1
12	SPEAKER GRILLE	2
13	COVER PLATE	1
14	COVER PLATE DECAL	1



I. PREPARATION OF VEHICLE INTERIOR

IF VEHICLE IS NOT EQUIPPED WITH FACTORY REAR A/C AND REAR AUDIO CONTROLS, PROCEED TO STEP 4.

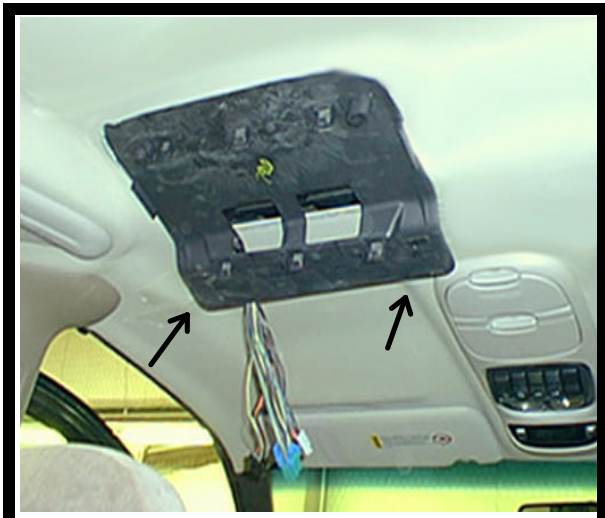


Remove and discard controls from console and lay them in a safe place. Discard console. See Fig. 2.

1. Carefully remove the O.E.M. console mounted to inner roof of vehicle by pulling downward on sides to release clips. See Figure 1.
2. Lower console and disconnect wiring at (3) three locations.



FIGURE 2



3. Remove and retain (2) two O.E.M. screws which secure plastic panel. Slide panel rearward until front edge of panel can be lowered through headliner. Slide forward and discard panel. See Figure 3.

FIGURE 3

4. Using a razor knife, carefully trim headliner as shown. Make sure the 27" cut is centered left to right in vehicle. **Caution: Before cutting headliner material, check for wiring or other componentry above headliner. Cut only where indicated. DO NOT OVERCUT HEADLINER.** See Figure 4.
5. Remove and retain O.E. dome light. **Caution: Headliner material is brittle. Use care when removing dome light. Access dome light clip through opening previously cut in headliner.**
6. Scribe a center line on the sheet metal roof of vehicle.

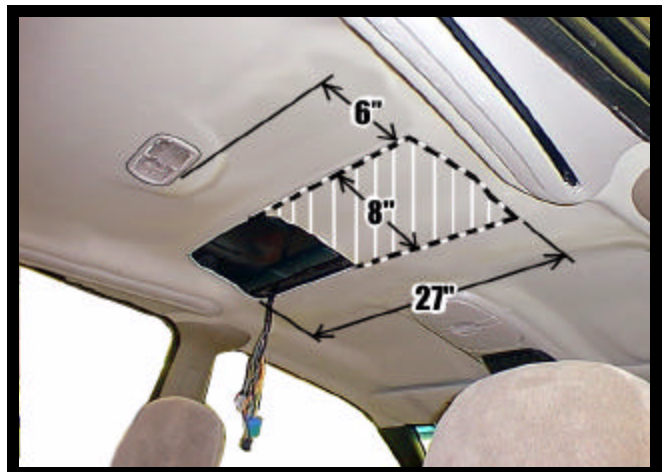


FIGURE 4

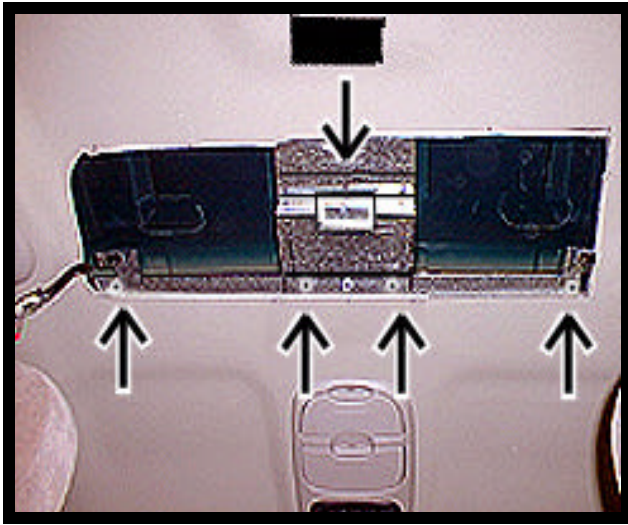


FIGURE 5

7. Remove and retain (2) two screws which secure front mounting bracket (item 6 pg. 2) to console (item 11 pg. 2). Install front mounting bracket over O.E. brace, align slot with center line scribe and front edge of the O.E. brace. Make sure that the bracket is centered left to right. If applicable align and fasten O.E. screws in O.E. clips in the roof of the vehicle. Secure using (4) four # 10 x1/2" screws (item 1 pg. 2). See Fig. 5.
8. Inset rear mounting bracket (item 7 pg. 2), with bent edges upward, between headliner and sheet metal roof. Slide bracket rearward until tabs engage rear O.E. brace. Make sure that bracket engages securely. Align slots in bracket with the center line scribed in the roof. Secure brackets together using (3) three # 10 x1/2" screws (item 1 pg. 2). See Figure 5.

9. Install jumper wire harness (item 10 pg. 2) to extend the O.E.M. audio control harness, if equipped. See Figure 6.

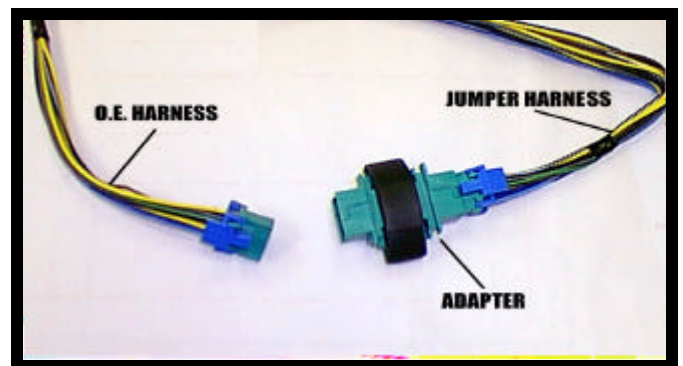


FIGURE 6

**II. PREPARATION OF CONSOLE FOR INSTALLATION
IF VEHICLE IS NOT EQUIPPED WITH FACTORY REAR A/C AND REAR AUDIO CONTROLS,
PROCEED TO STEP 13.**

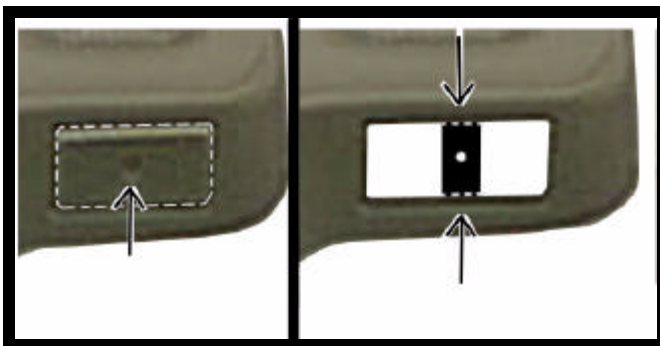


FIGURE 7

10. Carefully remove cover from respective switch location on console (item 11 pg. 2) if applicable. See Fig. 7.
11. Using a razor knife, trim away tab.
12. Install A/C switch on driver's side opening and audio controls on passenger's side opening. **Note: Make sure switches and controls are installed in the proper direction.** Remove backing from tape on switch mounting brackets (item 8 pg. 2) and install (1) one bracket on top and (1) one on bottom of each switch. Press firmly on brackets to secure to switch and inside of console.



FIGURE 8



FIGURE 9

**IF SPEAKER UPGRADE KIT WAS PURCHASED,
INSTALL PER INSTRUCTIONS PROVIDED.
SEE FIGURE 9 FOR SUGGESTED LOCATIONS.**

III. INSTALLATION OF CONSOLE

NOTE: Additional assistance in mounting the overhead console in vehicle is advised to prevent damage to console or components. Caution: Do not overtighten screws. Use extra support for the console until secured to the vehicle, failure to do so may cause damage to console or installed components.

13. Install and route all video and audio cables, and any other added component requirements to their respective places in the vehicle. Refer to component installation instructions for wiring diagrams. The suggested routing of the video system cable is as follows: Above the headliner from video system to B-pillar. Down the B-pillar to the floor and underneath scuff panel. Up the passenger's side kick panel and across the bottom side of dash panel. Route the power lead to a fused accessory controlled source. Connect the ground lead to the vehicle chassis. Route the remaining wiring (RCA plugs, Remote Sensor extension, etc.) to the VCP location. See Figure 10. Connect per instructions included with the video system. If video system is to be used as a television, install an appropriate antenna per instructions included with the antenna.

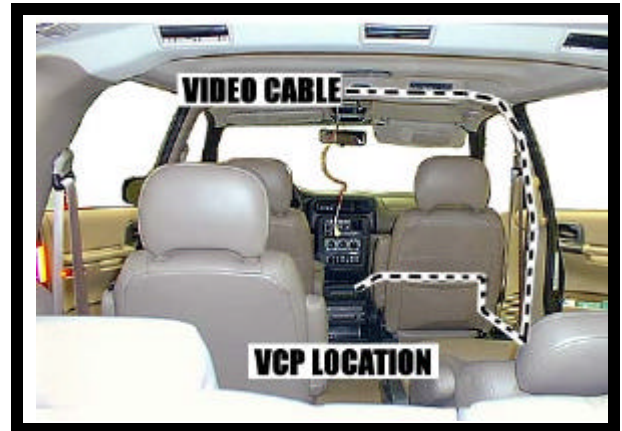


FIGURE 10

14. Construct a jumper harness that will connect the vehicle's dome light to the black and white wires from the lights in video system.

15. Raise console (item 11 pg. 2) into approximate position and connect all wiring to components.

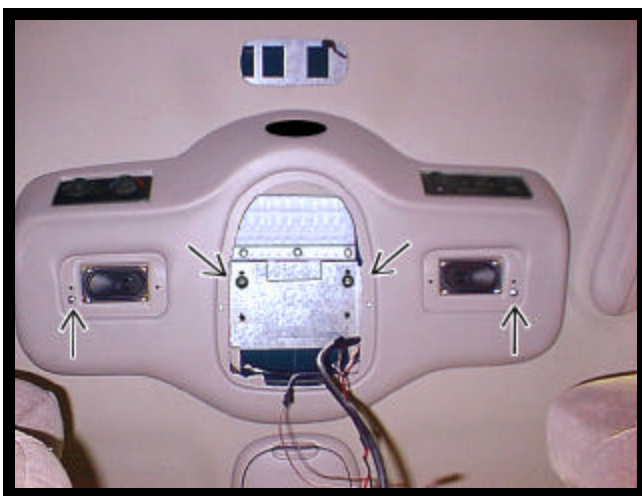


FIGURE 11

16. Position console against headliner. Loosely install using (2) two 6-32 x 3/4" screws (item 3 pg. 2) through the smaller holes in bracket on console into threaded clips on front mounting bracket. See fig. 11.

17. Using a scribe or similar tool, align holes in speaker area with slots in mounting bracket. Loosely secure sides of console using (2) two #8 x 3/4" screws (item 2 pg. 2). See figure 11. Make sure console alignment is straight, then tighten all screws.

18. Release video screen from locked position. Lower video screen to viewing position for access to

mounting location in top of video system housing.

19. Raise video system into approximate position and connect all wiring to components. Connect wiring and cabling to video system per instructions included with video system.



FIGURE 12

20. Check function of all components and lights. See operating instructions for video system operations check. For further assistance, refer to the video system manual for the technical support phone number listed for your area.

21. Insert video system into opening in console.

Note : Make sure wires do not get pinched

o system and console .

22. Align holes in housing with clips in mounting bracket. Secure using (4) four 6-32x 3/4" screws (item 3 pg.2) and (4) four #6 washers (item 4 pg. 2). See Figure 12.

Caution : Do not overtighten screws.

23. Raise video screen into locked position.

24. Install speaker grille (item 12 pg 2). Align clips in grille with holes in console and press firmly. See Fig. 13.

25. If speaker upgrade kit was not installed, install cover plate (item 13 pg 2) at rear of console and secure using (2) two # 6 X 3/8" screws (item 5 pg 2). See Figure 13.

26. Install cover plate decal (item 14 pg 2).

27. Install dome light in original manner.



FIGURE 13

Free Manuals Download Website

<http://myh66.com>

<http://usermanuals.us>

<http://www.somanuals.com>

<http://www.4manuals.cc>

<http://www.manual-lib.com>

<http://www.404manual.com>

<http://www.luxmanual.com>

<http://aubethermostatmanual.com>

Golf course search by state

<http://golfingnear.com>

Email search by domain

<http://emailbydomain.com>

Auto manuals search

<http://auto.somanuals.com>

TV manuals search

<http://tv.somanuals.com>