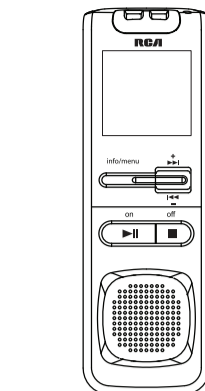


# VR5320R VR5330R



EN/E  
It is important to read this instruction prior to using your new product for the first time.  
Es importante leer este manual antes de usar por vez primera su equipo.

## Before you begin

**Unpacking your player**  
You should have the following:  
 • One voice recorder  
 • One user manual  
 • One quick start guide  
 • One carrying case (for VR5330R only)  
 • Two AAA size batteries (For VR5330R only)

Turn off the player first before recharging batteries. If power interruption exceeds 20 seconds, date and time have to be set again.

**Auto power shut down**  
The player will be automatically turned off if left idle for three minutes.

**Installing batteries**  
This player can be operated by 2 "AAA" batteries (included).  
 1. Slide the battery compartment door to open.  
 2. Insert the two supplied "AAA" batteries with polarities matching indications.  
 3. Replace the battery compartment door.

**Using earphones and external microphone**  
 • When earphones are connected, sound output from speaker will be muted.  
 • When external microphone is connected, no recording can be made from built-in microphone.

**Refer to the battery level indicator on display for battery's level.**  
Replace with new batteries when the indicator is empty.

**Player on/off**  
Press **ON** to turn on the player. Press **OFF** to turn off the player.

**Keys lock**  
To avoid accidental key selection, slide the key lock selector toward the lock icon (🔒) to lock the keys. Reverse the step to unlock them.

## Basic operations

**Selecting folders and files**  
**To select folders:**  
 1. Press and hold **INFO** menu for about 2 seconds and then release the button. The first menu item **FOLDER** flashes on the display.  
 2. Press **LEFT** or **VOL -** to select a specific folder (AB/C/D).  
 3. Press **RIGHT**  
 4. Press **ENTER** to confirm.

5. Press and hold **SEARCH** or **STOP** to make quick search within a file.  
 • Quick search skips by second within the first minute of a recording. After that, the search skips by minute.  
 To resume searching by second, release the button once and then press and hold **SEARCH** or **STOP** again.  
 6. Press **LEFT** or **RIGHT** once to skip one file forward or backward.  
 7. Press **ENTER** to stop playback.

**To display file information:**  
Press **INFO** repeatedly to show various information of the current file:  
 • Current clock time  
 • Record date of current file  
 • Record time of current file  
 • Bookmark (if available) of current location  
 • Remaining recording time  
 • Elapsed play time (during playback)  
 • Playback mode (one/all)  
 • Tone (on/off)  
 • Year

**To change settings in the menu:**  
 1. In the player menu, press **INFO** repeatedly to view the following menu items:  
 Folder (AB/C/D)  
 Record conditions (DICT/CONF)  
 Record quality (LP/SP/HQ)  
 AV/R (on/off)  
 Playback speed (FAST/SLOW)  
 Playback mode (one/all)  
 Tone (on/off)  
 Year

## Erasing files and bookmarks

**Erasing mode**  
**To erase files or bookmarks, wait until NOTE is stopped:**  
 1. Press **X** once.  
 2. Press **LEFT** to select one of the erasing options:  
 • Delete the current file (DEL 01)  
 • Delete all files in the current folder (DEL ALL)  
 • Format the memory of the player (FORMAT) (Caution! All data inside the memory will be erased)  
 • Delete all bookmarks in the current file (DEL BK)  
 3. With one of the above options selected, press and hold **X** for about 3 seconds to confirm your selection and start the deletion.

• File numbers that come after erased one will be moved forward by one automatically.  
 • Press **STOP** to cancel erasing all files. The undeleted files are saved automatically.  
 • Formatting the internal memory may be required when:  
 1. The flash memory becomes unstable after performing many times on file creation and deletion.  
 2. To ensure the file system compatibility (i.e. file system FAT32 for application).  
 • You may also format the player when connected to a PC by right-clicking on the player's drive name or letter and select "Format" from the menu. Make sure you select FAT or FAT32 as the file system.

## Advanced operations

**Tones**  
**To activate or deactivate the beep sound when any key is pressed (except during playback and recording):**  
 1. Press and hold **INFO** menu for about 2 seconds and then release the button. The first menu item **FOLDER** flashes on the display.  
 2. Press **INFO** menu repeatedly until **NOTE** shows on display.  
 3. Press **LEFT** or **VOL +/-** to set beep sound ON/OFF.  
 4. Press **ENTER** to exit the player menu.

**Speed**  
**To adjust the playback speed:**  
 1. Press and hold **INFO** menu for about 2 seconds and then release the button. The first menu item **FOLDER** flashes on the display.  
 2. Press **INFO** menu repeatedly until **SPEED** shows on display.  
 3. Press **LEFT** or **VOL +/-** to select among **FAST**, **SLOW** and no speed indication (normal speed).  
 4. Press **ENTER** to exit the player menu.  
 • The above operations can also be done during playback.

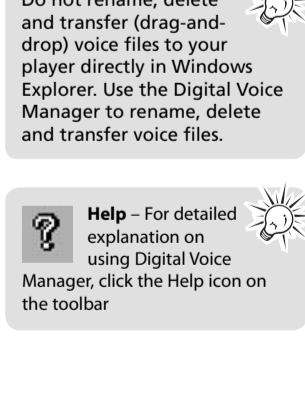
## Connecting to computer

**Computer system requirements**  
 • PC with Windows® 7, Windows® Vista or Windows® XP (Service Pack 1 or higher) or Windows® 2000 (Service Pack 3 or higher).  
 • Mac OS is NOT supported.  
 • 20MB free hard disk space for software  
 • USB port 1.1 or 2.0  
 • Installed sound card  
 • Mac OS version (i.e. Mac OS X version 10.4.11 or later) can support the mass storage mode only for listening audio files (recorded in HQ mode under "WAV" format) through the Mac audio program (eg. Quicktime).

**Connecting to computer**  
Connect the player before launching the Digital Voice Manager.  
 1. Extend the USB connector on the player and connect it to your computer's USB port.  
 2. **PCLINK** shows on the player's display. The player appears as a removable drive in your computer.  
 3. Now you can disconnect the player from the computer. If you want to go back to USB mode for file transfer at this stage, you need to unplug and connect the player to the PC again.

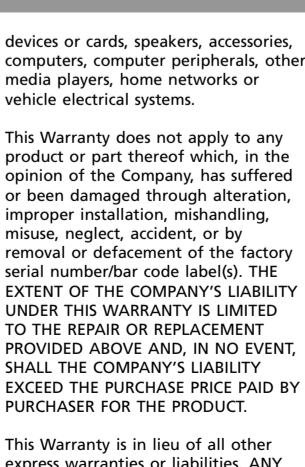
## Using Digital Voice Manager

**Transfer files with Digital Voice Manager**  
Your player is associated with a drive letter. You can drag the voice files you want to transfer to your player to the A/B/C/D folder in the drive.  
 Your files can be found in these folders in the player once it is disconnected from the computer.  
 You can also drag the voice files you want to transfer from the A/B/C/D folder in the drive to your computer.  
 Do not rename, delete and transfer (drag-and-drop) voice files to your player directly in Windows Explorer. Use the Digital Voice Manager to rename, delete and transfer voice files.  
 Help – For detailed explanation on using Digital Voice Manager, click the Help icon on the toolbar



## Disconnecting from computer

After you have copied files to or from the player, you can disconnect the player from the computer.  
 1. Click the **Disconnect** icon from the System Tray and select **Unplug or Eject hardware**. Select the drive corresponding to your player.  
 2. The **Stop a Hardware player** screen will appear. Select the player to be stopped again for confirmation and click **OK**.



## Warranty information

**12 Month Limited Warranty Applies to RCA Voice Recorders**  
AUDIOVOX ACCESSORIES CORP (the Company) warrants to the original retail purchaser of this product that, in the event of a defect in material or workmanship, under normal use and conditions, be proven defective in material or workmanship within 12 months from the date of original purchase, such defect(s) will be repaired or replaced with a reconditioned product (at the Company's option) without charge for parts and repair labor.  
 To obtain repair or replacement within the terms of this Warranty, the product is to be delivered with proof of warranty coverage (e.g. dated bill of sale), specification (if detected), transportation prepaid, to the Company at the address shown below.  
 This Warranty does not extend to the elimination of externally generated static or noise, to correction of antenna problems, to interruptions of broadcast or internet service, to costs incurred for installation, removal or reinstallation of products, to corruptions caused by computer viruses, spyware or other malware, to loss of media, files, data or content, or to damage to tapes, discs, removable memory



**CAUTION**  
 WARNING: TO PREVENT FIRE OR ELECTRICAL SHOCK HAZARD, DO NOT EXPOSE THE PRODUCT TO RAIN OR MOISTURE.  
 Some of the following information may not apply to your particular product; however, as with any electronic product, precautions should be observed during handling and use:  
 • Read these instructions.  
 • Keep these instructions.  
 • Heed all warnings.  
 • Follow all instructions.  
 • Do not use this apparatus near water.  
 • Clean only with dry cloth.  
 • Do not install near any heat sources such as radiators, heat registers, stoves, or other apparatus (including amplifiers) that produce heat.  
 • Only use attachments/accessories specified by the manufacturer.  
 • Refer all servicing to qualified service personnel. Servicing is required when the apparatus has been damaged in any way, such as power-supply cord or plug is damaged, liquid has been spilled or objects have fallen into the apparatus, the apparatus has been exposed to rain or moisture, does not operate normally, or has been dropped.

## General controls

**Player controls**  
 1. USB connector – Press the button on the back and then slide to extend or retract the connector.  
 2. **info/menu** – Press and hold to access the player menu.  
 3. Press repeatedly to show information of current file.  
 4. **ON** – Press the button to turn player on, start/pause playback.  
 5. **OFF** – Press the button to turn player off.  
 6. **SEARCH/STOP** – Skips / searches backward or forward, selects /

browses in the player menu.  
 7. **OFF** – Turns off player, stops playback or recording.  
 8. Key lock selector  
 9. External microphone jack  
 10. External earphones jack  
 11. **VOL +/-** – Adjusts volume, selects / browses in the player menu.  
 12. **REC/BOOKMARK** – Starts and pauses recording, inserts bookmarks  
 13. **X ERASE** – Erases files, bookmarks or format memory.  
 14. Battery compartment door

## Display

1. Folder (A/B/C/D)  
 2. Recording in progress  
 3. File selected  
 4. Total number of files in a folder  
 5. Playback in progress  
 6. Remaining time for recording  
 7. Recording date  
 8. Area for displaying messages (refer to the next section)  
 9. Battery level indicator

## Recording

**Setting recording mode**  
 1. While playback is stopped, select a destination folder (A/B/C/D) (refer to "Basic operations")  
 2. Press **REC/BOOKMARK** to start recording. (recording time will be displayed once you press the button)  
 3. To pause recording, press **ON** once, press again to resume recording.  
 4. To stop recording, press **OFF**.

## Display messages

The messages show at the bottom of the display during operation. Refer to the below for their meanings:  
 12 HOUR 12 hour time display mode  
 24 HOUR 24 hour time display mode  
 ADD BK Insert bookmark  
 APPEND Appendix (Adding Appendix)  
 BATTLO Batteries are weak  
 CUTE Cut End (Cutting)  
 CUES Deleted current file  
 DEL 01 Delete all files in a folder  
 DEL BK Delete all bookmarks in the current file  
 FORMAT Format the memory  
 FULL Memory full  
 INSERT Insertion (Inserting New Segments)  
 LOCKED Key locked  
 NO BK MK No bookmark created in the current file  
 NO TONE No beep sound (Setting Beep Sound)  
 OFF Off (Automatic Voice Recording)  
 ON On (Automatic Voice Recording)  
 PAUSE Playback or recording is paused  
 PCLINK Player is connected to the computer  
 SEN MI Sensitivity Level (AVR)  
 SPEED Speed of playback  
 TONE Beeping sound on (Setting Beep Sound)  
 VOL 15 Volume (Setting Volume)  
 WAIT Memory rearrangement/System is busy

## Setting recording quality

**Definition:**  
 • **LP (Long Play)** – allows for about 400 (VR5320R) / 800 (VR5330R) hours recording. Recording format: .voc  
 • **SP (Standard Play)** – allows for about 70 (VR5320R) / 140 (VR5330R) hours recording. Recording format: .voc  
 • **HQ (High Quality)** – allows for about 14 (VR5320R) / 70 (VR5330R) hours recording. Recording format: .wav

## Setting recording condition

**Definition:**  
 • **CONF (Conference)** – in a more open area and recording source is far from the player.  
 • **DICT (Dictation)** – in a more enclosed area and recording source is close to the player.  
 1. Press and hold **INFO** menu for about 2 seconds and then release the button. The first menu item **FOLDER** flashes on the display.  
 2. Press **INFO** menu repeatedly until **DICT** or **CONF** flashes on the display.  
 3. Press **LEFT** or **VOL +/-** to select between **DICT** and **CONF**.  
 4. Press **ENTER** to exit the player menu.

## Setting recording

**Definition:**  
 • **NOTE** (Note) – for conferences, to obtain optimum recording quality, place the recorder with the microphone freely exposed to the sound source as close as convenient. A built-in automatic recording level control will set the optimum record level during normal recording. Avoid recording near unwanted sound sources, such as air conditioners or fans.  
 • If power supplies for the battery fails suddenly (e.g. batteries are removed accidentally) during recording, the recording in progress will be interrupted. The recorded file may also be corrupted and cannot be played back.

## Important safety instructions

**WARNING: THE BATTERY (battery or batteries or excessive heat) shall not be exposed to excessive heat such as sunshine, fire or the like.**  
**Ecology**  
 Help protect the environment – we recommend that you dispose of used batteries by putting them into specially designed receptacles.  
**Precutions for the unit**  
 • Do not use the unit immediately after transportation from a cold place to a warm place; condensation problems may result.  
 • Do not store the unit near fire, places with high temperature or in direct sunlight. Exposure to direct sunlight or extreme heat (such as inside a parked car) may cause damage or malfunction.  
 • Do not expose to rain or moisture.  
 • Clean the unit with a soft cloth or a damp chamois leather. Never use solvents.  
 • The unit must only be opened by qualified personnel.

## Important safety instructions

**WARNING: THE BATTERY (battery or batteries or excessive heat) shall not be exposed to excessive heat such as sunshine, fire or the like.**  
**Ecology**  
 Help protect the environment – we recommend that you dispose of used batteries by putting them into specially designed receptacles.  
**Precutions for the unit**  
 • Do not use the unit immediately after transportation from a cold place to a warm place; condensation problems may result.  
 • Do not store the unit near fire, places with high temperature or in direct sunlight. Exposure to direct sunlight or extreme heat (such as inside a parked car) may cause damage or malfunction.  
 • Do not expose to rain or moisture.  
 • Clean the unit with a soft cloth or a damp chamois leather. Never use solvents.  
 • The unit must only be opened by qualified personnel.

## Before you begin

**Unpacking your player**  
You should have the following:  
 • One voice recorder  
 • One user manual  
 • One quick start guide  
 • One carrying case (for VR5330R only)  
 • Two AAA size batteries (For VR5330R only)

## Basic operations

**Selecting folders and files**  
**To select folders:**  
 1. Press and hold **INFO** menu for about 2 seconds and then release the button. The first menu item **FOLDER** flashes on the display.  
 2. Press **LEFT** or **VOL -** to select a specific folder (AB/C/D).  
 3. Press **RIGHT**  
 4. Press **ENTER** to confirm.

## Erasing files and bookmarks

**Erasing mode**  
**To erase files or bookmarks, wait until NOTE is stopped:**  
 1. Press **X** once.  
 2. Press **LEFT** to select one of the erasing options:  
 • Delete the current file (DEL 01)  
 • Delete all files in the current folder (DEL ALL)  
 • Format the memory of the player (FORMAT) (Caution! All data inside the memory will be erased)  
 • Delete all bookmarks in the current file (DEL BK)  
 3. With one of the above options selected, press and hold **X** for about 3 seconds to confirm your selection and start the deletion.

## Advanced operations

**Tones**  
**To activate or deactivate the beep sound when any key is pressed (except during playback and recording):**  
 1. Press and hold **INFO** menu for about 2 seconds and then release the button. The first menu item **FOLDER** flashes on the display.  
 2. Press **INFO** menu repeatedly until **NOTE** shows on display.  
 3. Press **LEFT** or **VOL +/-** to set beep sound ON/OFF.  
 4. Press **ENTER** to exit the player menu.

## Connecting to computer

**Computer system requirements**  
 • PC with Windows® 7, Windows® Vista or Windows® XP (Service Pack 1 or higher) or Windows® 2000 (Service Pack 3 or higher).  
 • Mac OS is NOT supported.  
 • 20MB free hard disk space for software  
 • USB port 1.1 or 2.0  
 • Installed sound card  
 • Mac OS version (i.e. Mac OS X version 10.4.11 or later) can support the mass storage mode only for listening audio files (recorded in HQ mode under "WAV" format) through the Mac audio program (eg. Quicktime).

## Disconnecting from computer

After you have copied files to or from the player, you can disconnect the player from the computer.  
 1. Click the **Disconnect** icon from the System Tray and select **Unplug or Eject hardware**. Select the drive corresponding to your player.  
 2. The **Stop a Hardware player** screen will appear. Select the player to be stopped again for confirmation and click **OK**.

## Warranty information

**12 Month Limited Warranty Applies to RCA Voice Recorders**  
AUDIOVOX ACCESSORIES CORP (the Company) warrants to the original retail purchaser of this product that, in the event of a defect in material or workmanship, under normal use and conditions, be proven defective in material or workmanship within 12 months from the date of original purchase, such defect(s) will be repaired or replaced with a reconditioned product (at the Company's option) without charge for parts and repair labor.  
 To obtain repair or replacement within the terms of this Warranty, the product is to be delivered with proof of warranty coverage (e.g. dated bill of sale), specification (if detected), transportation prepaid, to the Company at the address shown below.  
 This Warranty does not extend to the elimination of externally generated static or noise, to correction of antenna problems, to interruptions of broadcast or internet service, to costs incurred for installation, removal or reinstallation of products, to corruptions caused by computer viruses, spyware or other malware, to loss of media, files, data or content, or to damage to tapes, discs, removable memory

## Advanced operations

**To play one/all files in a folder:**  
 1. Press and hold **INFO** menu for about 2 seconds and then release the button. The first menu item **FOLDER** flashes on the display.  
 2. Press **INFO** menu repeatedly until **ONE** or **ALL** flashes on display.  
 3. Press **LEFT** or **VOL +/-** to select between **ONE** and **ALL**.  
 4. Press **ENTER** to exit the player menu.  
 • If **ONE** is selected, the player will stop after the selected file is played. If **ALL** is selected, the player will stop after all files in a folder are played.

## Advanced operations

**Append**  
**To insert an appendix at the end of the current file:**  
 1. Once **ON** is pressed (refer to step 4 in the section "Editing mode"), the REC icon shows and recording of appendix is started.  
 2. Press **STOP** to stop the recording of the appendix.  
 3. Do not power off the player if **WAIT** appears on the display.  
**Insert**  
**To insert a new segment into the current file:**  
 1. Once **ON** is pressed (refer to step 4 in the section "Editing mode"), pause mode is released and the REC icon shows. The recording of a new segment is started from where the pause mode is released.  
 2. Press **STOP** to stop the recording of new segment.  
 3. Do not power off the player if **WAIT** appears on the display.  
**Append**  
**To insert an appendix at the end of the current file:**  
 1. Once **ON** is pressed (refer to step 4 in the section "Editing mode"), the REC icon shows and recording of appendix is started.  
 2. Press **STOP** to stop the recording of the appendix.  
 3. Do not power off the player if **WAIT** appears on the display.  
**Cut**  
**To erase unwanted parts from the current file:**  
 1. Start playback of the desired file.  
 2. Press **X** to mark the start of the unwanted part, **CUTE** shows on display.  
 3. Press **X** to mark the end of the unwanted part, **CUTE** shows on display.  
 4. Press **X** again to confirm cutting within 3 seconds. Otherwise, the cutting operation will be canceled.  
 • You may also press **STOP** to cancel the cutting operation.  
 • Do not power off the player if **WAIT** appears on the display.

## Advanced operations

**To play one/all files in a folder:**  
 1. Press and hold **INFO** menu for about 2 seconds and then release the button. The first menu item **FOLDER** flashes on the display.  
 2. Press **INFO** menu repeatedly until **ONE** or **ALL** flashes on display.  
 3. Press **LEFT** or **VOL +/-** to select between **ONE** and **ALL**.  
 4. Press **ENTER** to exit the player menu.  
 • If **ONE** is selected, the player will stop after the selected file is played. If **ALL** is selected, the player will stop after all files in a folder are played.

© 2010 Audiovox Accessories Corporation  
111 Congressional Blvd., Suite 350  
Carmel, IN 46032  
www.rcaaudiovideo.com  
Registered in USA  
Printed in China

## Free Manuals Download Website

<http://myh66.com>

<http://usermanuals.us>

<http://www.somanuals.com>

<http://www.4manuals.cc>

<http://www.manual-lib.com>

<http://www.404manual.com>

<http://www.luxmanual.com>

<http://aubethermostatmanual.com>

Golf course search by state

<http://golfingnear.com>

Email search by domain

<http://emailbydomain.com>

Auto manuals search

<http://auto.somanuals.com>

TV manuals search

<http://tv.somanuals.com>