

UltraTV 1500 MCE

User's Manual



-English-

AVerMedia[®]
www.avermedia.com

Table of Contents

CHAPTER 1 INTRODUCTION	1
CHAPTER 2 INTRODUCING THE ULTRATV APPLICATION	2
Launching the UltraTV Application.....	2
Introducing the User Interface.....	5
The Control Panel.....	6
Setting for Power Option.....	7
Resizing the TV Monitor Window.....	8
Changing Skins.....	9
CHAPTER 3 TV	10
Selecting Between TV Signals (air/cable) or Channel Groups.....	10
Adding and Deleting Channel Groups.....	10
Memorizing TV Channels.....	11
Excluding Unwanted Channels.....	12
Selecting a TV Channel.....	12
Specifying a Channel Name or Description.....	13
Changing the TV Channel Order.....	13
Locking and Unlocking a TV Channel.....	14
Adjusting Volume.....	16
Using the OverScan Function.....	16
16-Channel Preview.....	16
Selecting Between TV and External Video.....	17
Setting the Video Format of External Video.....	17
Modifying TV Channel Frequencies.....	18
Fine tuning Color and Display Quality.....	18
CHAPTER 4 IMAGE CAPTURE	19
Before Capturing.....	19
Capturing a TV/ Video Image.....	19
Multiple Image Sequence Capture.....	21
CHAPTER 5 TELETEXT (FOR PAL SYSTEM)	22
Overview.....	22

Toolbar Buttons.....	23
LED Lamp.....	24
Using Teletext.....	24
CHAPTER 6 Time Shift	27
Time Shift Controls.....	27
Customizing Time Shift Settings.....	27
Using the Time Shift Function.....	28
CHAPTER 7 DVR	30
DVR Controls.....	30
Recording Programs or Video.....	30
Playing the Recorded Programs or Video.....	31
Picture-in-Picture Display.....	32
Setup.....	33
CHAPTER 8 FM Radio.....	38
FM Radio Controls.....	38
How to Auto Scan FM Radio Channels.....	38
Manually Scanning Specific FM Channels.....	39
Channel Versus Frequency Selection.....	40
Selecting a Channel.....	40
Selecting a Radio Frequency.....	40
Skipping Unwanted Channels.....	41
Saving a Radio Frequency to a Channel.....	41
Modifying or Adding FM Radio Channels.....	42
Changing the FM Radio Channel Order.....	42
Setting the Audio Mode.....	43
Adding and Deleting Channel Groups.....	43
Tuning the FM Radio Frequencies.....	44
Specifying the Tuning Increment.....	44
Recording FM Radio Broadcast.....	44
Playing the Recorded Audio.....	45
Using the FM Time Shift Function.....	46
Customizing Audio Recording Settings.....	46
CHAPTER 9 Scheduler.....	48

Adding Schedules	49
CHAPTER 10 HOT KEYS	52
CHAPTER 11 CUSTOMER SERVICE	54

CHAPTER 1

INTRODUCTION

Convert your computer system into a real multimedia entertainment center with **AVerMedia® UltraTV series!** Now you can watch television, video conference, and capture still images and video on your PC. If you purchased **UltraTV card** with FM capability, you can also listen to FM radio.

Surely, you'll never miss your favorite ball games, soaps or game shows anymore. Because **AVerMedia® UltraTV** comes with a scheduler wherein you can configure to show or record your preset TV programs or FM radio broadcasts whenever they are aired.

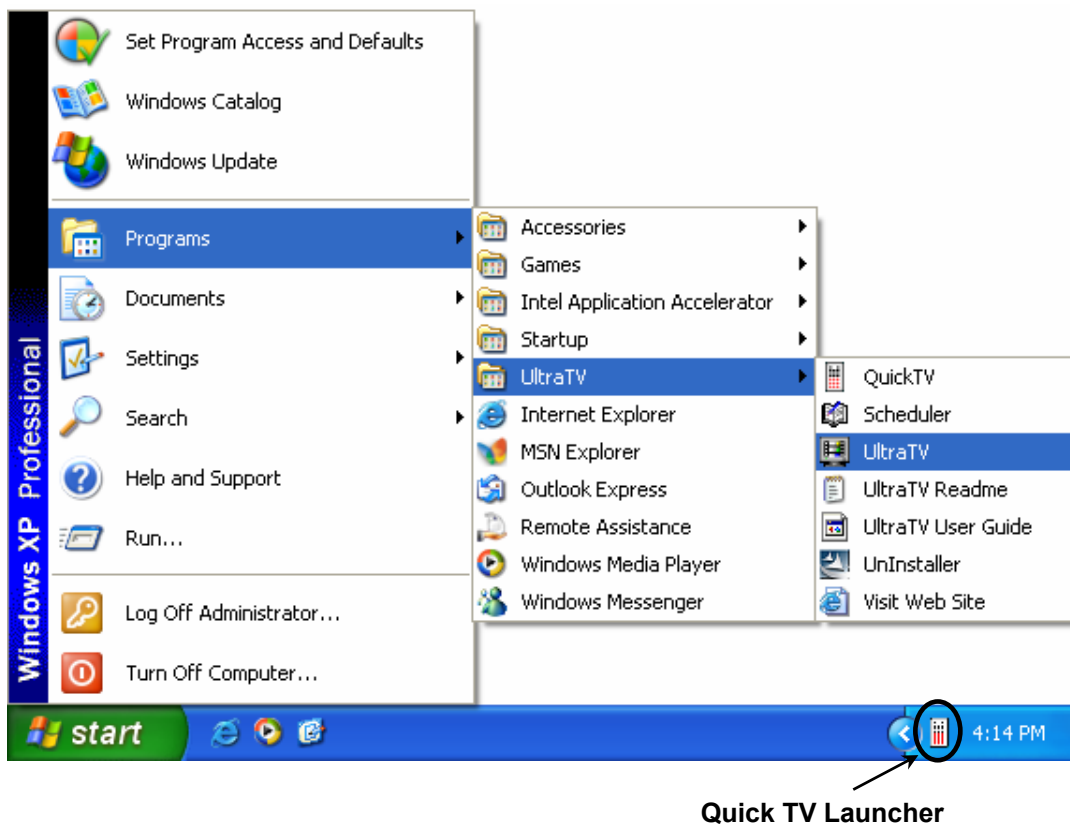
CHAPTER 2

INTRODUCING THE ULTRATV APPLICATION

The **UltraTV** application allows you to watch TV or video, record still or motion video, and listen to FM radio on your PC while you work on your computer.

Launching the UltraTV Application

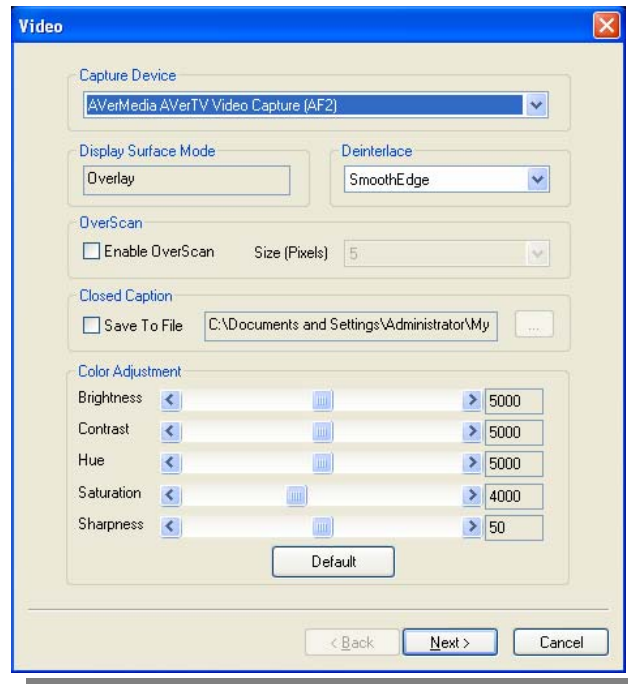
Run the **UltraTV** application from the Programs menu.



To run the application, click **Start**, select **Programs**, choose **UltraTV**, and then click **UltraTV**. Another way is to double-click the **UltraTV** program icon on the desktop. Or, double-click the **Quick TV** launcher located at the lower right corner of the screen.

If you are running the application for the first time, a configuration dialog box will appear, prompting you to adjust settings for your **AVerMedia® UltraTV** card.

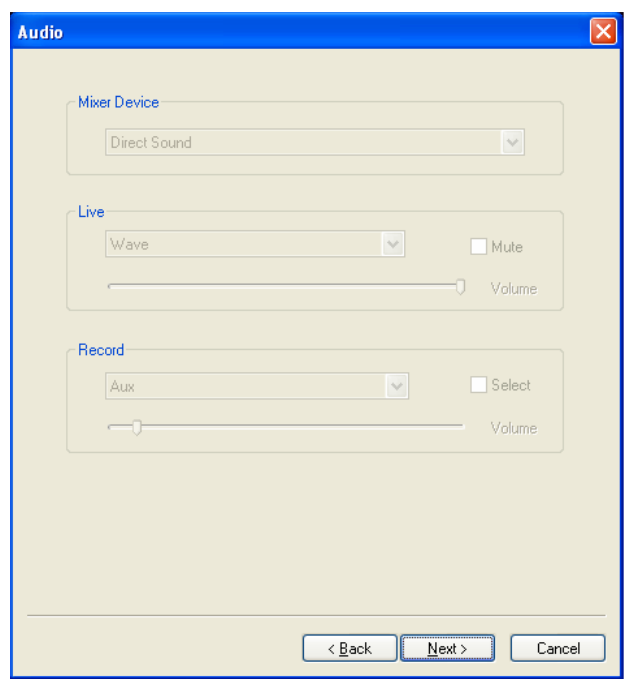
The configuration dialog box first displays the **Video** tab where you are prompted to choose a video capture device driver.



The video capture driver of UltraTV tuner card is already selected by default. If you have other TV tuner or capture devices installed in your system, you can switch to another driver by selecting it from the drop-down list. To adjust TV display settings such as brightness and contrast, drag the slider bars until you get the best display results. If there is closed caption on the TV programs, you can enable saving of closed caption.

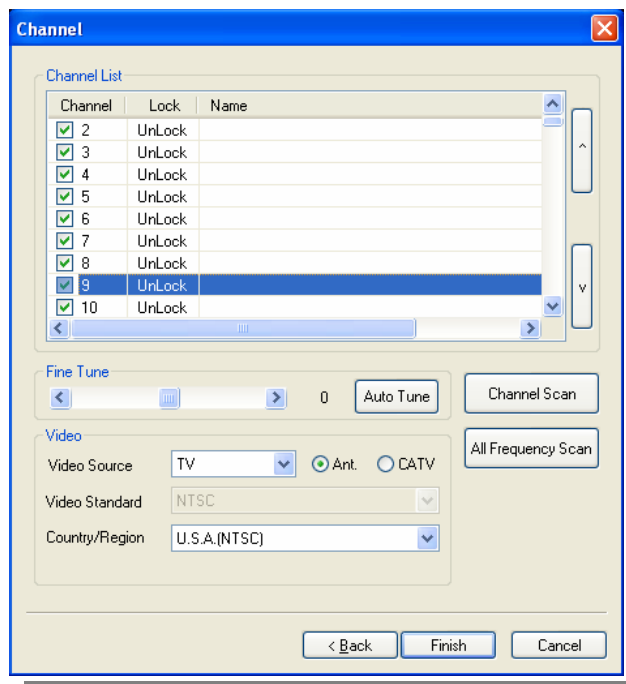
Enable the OverScan feature if you would like to hide the borders of the TV/video images while watching the TV/video programs. For more details, refer to *Using the OverScan Function* in Chapter 3.

When you click **Next**, the **Audio** tab is displayed.



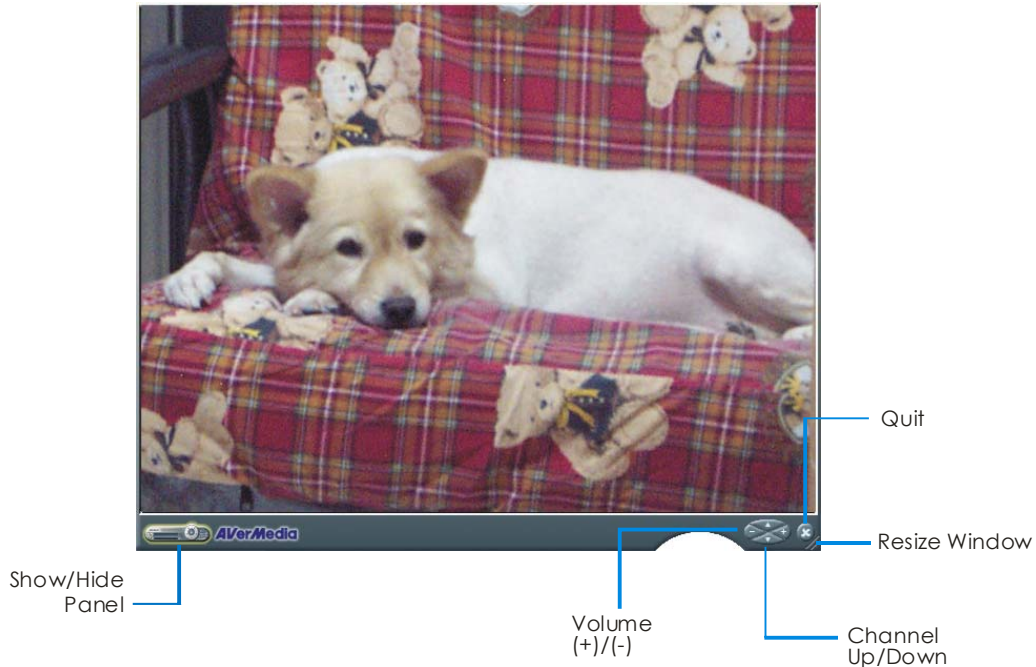
Note If you purchase the product with DirectSound support, then you don't have to make any setting on the Audio tab

When you click **Next**, the **Channel** tab is displayed. If this is your first time to use the **UltraTV** application, you need to search for all available TV channels in your area. Select the **Ant.** option to search only for air channels, or select **CATV** to scan for cable channels. Then click the **Channel Scan** button to start searching and memorizing channels. After scanning, click **Finish** to exit the current tab. (Refer to the section titled **Memorizing TV Channels** for more details.)



Introducing the User Interface

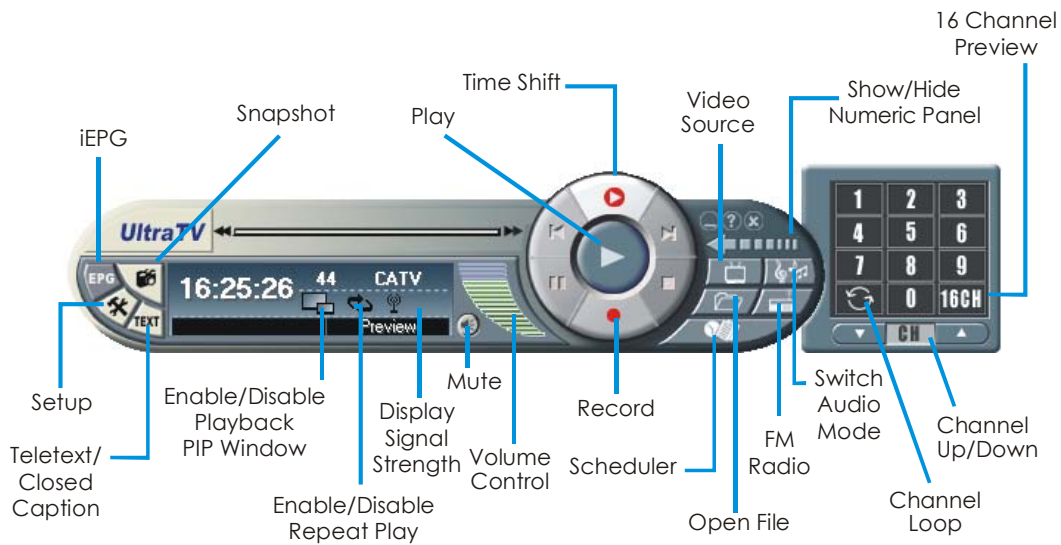
The **TV monitor** allows you to watch live TV or video.



The **Control Panel** provides button controls for selecting channels, changing between TV and external video source, capturing images, and more. It has a panel display that shows the current active video source (e.g. TV, Composite or S-Video), channel number, and other indicators.

To display the **Control Panel**, click the button located at the lower left corner of the TV Monitor.

The Control Panel



The table below describes what the button controls on the Control Panel are used for.

BUTTON	FUNCTION	BUTTON	FUNCTION
iEPG	Link to an interactive content guide on a Web site (such as TitanTV.com in the U.S.)	Video Source	Change to view TV or video from a Composite or S-Video source.
Setup	Allows you to: <ul style="list-style-type: none"> * Change the look of the user interface. * Fine tune TV display and audio settings. * Tune into air/cable TV. * Autoscan channels. * Lock/unlock channel. * Create channel groups. * Configure snapshot settings. * Customize recording settings. * Select Time Shift video Quality. 	Open File	Create a playlist of video files to playback.

BUTTON	FUNCTION	BUTTON	FUNCTION
Teletext/Closed Caption	Launch Teletext Application or display closed caption.	Scheduler	Launch the Scheduler application.
Enable/Disable Playback PIP Window	Playback recorded video while watching TV in a picture-in-picture window. (Create a playlist first by clicking the Open File button.)	Show/Hide Numeric Panel	Toggle between displaying or hiding the Numeric Panel.
Enable/Disable Repeat Play	Continuously play back the files in the playlist.	Switch Audio Mode	Choose between the available types of audio.
Mute	Turn off the sound.	FM Radio	Switch to listening to FM radio.
Volume Control	Drag your mouse up/down to increase/decrease the volume level.	16 Channel Preview	Display 16 consecutive TV channels on the TV Monitor window.
Record	Record the current TV show.	Channel Loop	Return to previously accessed channel.
Time Shift	Performs background recording of the live TV program. This function lets you view the recorded parts, while at the same time, recording is in progress.	Channel Up/Down	Go to the next upper or lower active channel.
Snapshot	Capture a single image or a sequence of images.	Play	Play back recorded video files.

Setting for Power Option

While you will be away from the computer, you can set the time to turn off the computer or put your computer in Standby or Hibernate mode.

Note

Standby :

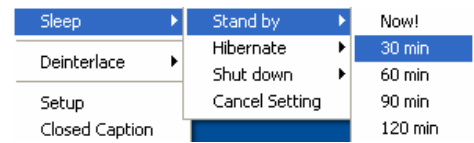
Standby is a state in which your monitor and hard disks turn off, so that your computer uses less power.

Hibernate :

Hibernation is a state in which your computer shuts down to save power but first saves everything in memory on your hard disk.

To complete the setting:

- ➔ Right-click on the TV monitor, point to **Sleep**, and choose the power option and an optimal execution time.



To abort the setting:

- ➔ Right-click on the TV monitor, point to **Sleep**, and choose **Cancel Setting**.

	Description
Cancel Setting	Disable the Sleep function.
Stand by Now!/30/60/90/120 min	Your computer will go into Standby mode in Now!/30/60/90/120 minutes.
Hibernate mode 30/60/90/120 min	Your computer will go into Hibernate mode in 30/60/90/120 minutes.
Enter Power off mode after 30/60/90/120 min	Your computer will be turned off in 30/60/90/120 minutes.

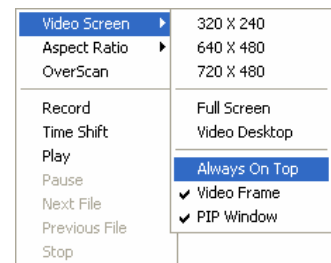
Resizing the TV Monitor Window

To enlarge or reduce the size of the TV Monitor window, click and drag the lower right edge of the window.

Double-click the TV Monitor window to display it in full screen.


When in full screen mode, double-click anywhere on the screen to revert to the normal TV window size.

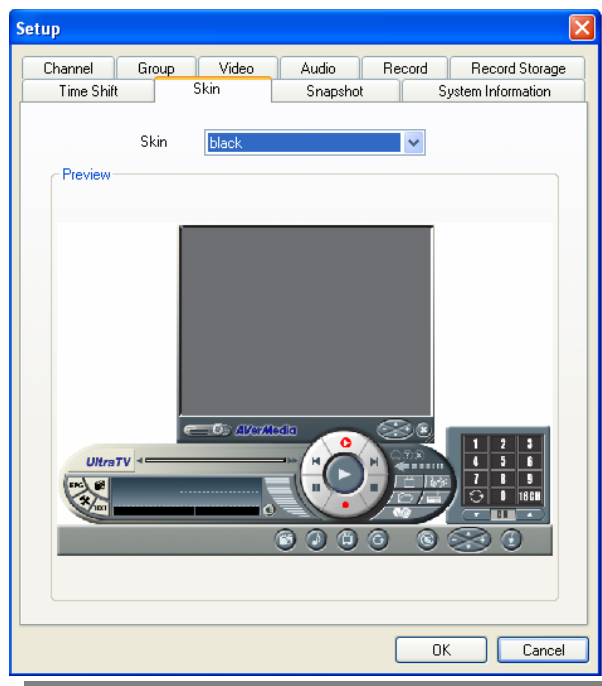
To make the TV Monitor window float over the top of other program windows, right-click on the TV Monitor, choose **Video Screen** and make sure **Always on Top** is checked.



Changing Skins

If you want to change the look and appearance of the TV Monitor and Control Panel, do the following:


1. Click the **Setup** button .
2. In the *Setup* dialog box, click the **Skin** tab.
3. From the *Skin* drop-down list, select the design you prefer, then click **OK**.



CHAPTER 3

TV


Selecting Between TV Signals (air/cable) or Channel Groups

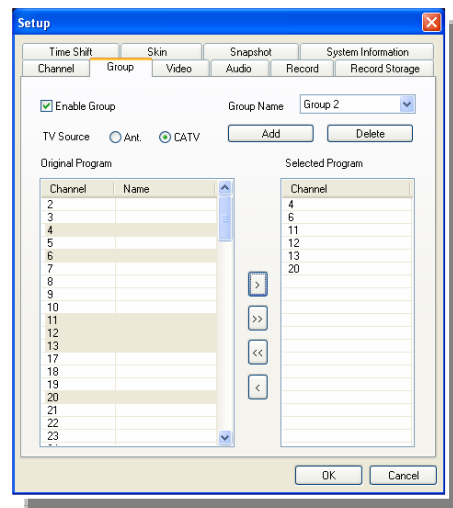
-  Click the **Setup** button then click the **Channel** tab to choose whether to watch air TV (**Ant.**) or cable (**CATV**). If you have added one or more channel groups, you can also select a group. (Refer to the section titled *Adding and Deleting Channel Groups* for more details.)


Adding and Deleting Channel Groups

Selecting a Channel Group allows you to switch between the channels of the selected group only when pressing the **Channel Up/Down** button. If you want to add or delete a channel group, do the following:

To add a new channel group:


1. Click the **Setup** button . In the *Setup* dialog box, click the **Group** tab.
2. Select the **Enable Group** option. The *New Group Name* dialog box will then appear.
3. Type in a group name and click **OK**.
4. Choose between **Ant.** (for air) or **CATV** (for cable).
5. Available channels will then be listed in the *Channel* column under the **Original Program** section. Shift+click or Ctrl+click channels from the list to select your own channel line up.



Then, click  to add your selection to the *Channel* column under the **Selected Program** section.

6. To add more groups, click **Add** and repeat steps 3 to 6.

To delete a channel group:


1. Click the **Setup** button . In the *Setup* dialog box, click the **Group** tab.
2. From the *Group Name* drop-down list, select the name of the group you want to remove.
3. Click **Delete** to remove the selected group.



Memorizing TV Channels

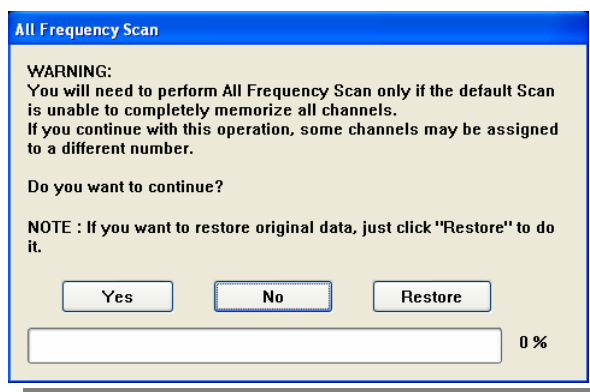
Auto-scan will search and memorize all available channels in your area. In the **Channel** tab of the *Setup* dialog box, all scanned and memorized channels are check marked. If you haven't done channel scanning when you first started using the application, simply follow the auto-scan procedure below. (Refer to the section titled *Skipping Unwanted Channels* for more detailed information to exclude selected channels.)

To auto-scan TV channels:

1. Click the **Setup** button  and click the **Channel** tab.
2. In the *Video Source* drop-down list, make sure the **TV** option is selected. Then select **Ant.** to search for air channels or select **CATV** to scan for cable channels.
3. From the *Country* drop-down list, choose your region.
4. Click **Channel Scan** to start the searching process.

The application has a default frequency table. When you click **Channel Scan**, the application will use the frequencies in this table and search for active channels. Active channels will then be memorized by the application.

5. You can terminate the searching process anytime. Just click **Stop**.
6. Check and verify that you can access all the TV channels. (Refer to the section titled *Selecting a TV Channel* for more detailed information regarding channels access.)
7. If there are channels missing from the channel memory, click **All Frequency Scan**. The following message will appear:




- Click **Yes** to start all frequency auto-scan. The application will then scan frequencies starting from 54 MHz to over 800 MHz, increasing by 1 MHz at a time. The application will check these frequencies for active channels, memorizing those that are.

Wait for the application to finish the all channel scan process or in the *All Frequency Scan* dialog box, click **Stop** to terminate the searching process.

- If you change your mind and want to revert to the default frequency table, click **All Frequency Scan** again and choose **Restore**.

Excluding Unwanted Channels


If you want to exclude undesirable channels from your channel list, do the following:

- Click the Setup button  and click the Channel tab.
- In the *Setup* dialog box, Channel column, click the unwanted channel. The check mark will be removed, indicating that the channel will be excluded from your channel list and that you won't be able to access and watch them through the **Channel Up/Down** button.

Channel	Lock	Name
<input checked="" type="checkbox"/> 3	UnLock	News Channel
<input checked="" type="checkbox"/> 4	UnLock	
<input type="checkbox"/> 5	UnLock	
<input checked="" type="checkbox"/> 6	UnLock	

Selecting a TV Channel

There are three ways of switching between TV channels:

- Click the **Channel Up/Down** buttons repeatedly until you reach your desired channel.
- Click  to open the *Numeric Panel* (as shown to the right). Then click on the **Numeric buttons** to get your desired channel number.

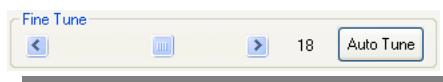


OR,

Click the **Setup** button  and click the **Channel** tab.


Under the *Channel* list, simply click on the desired channel.

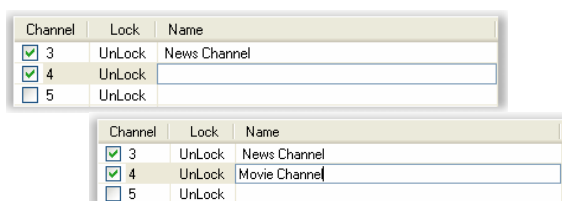
You will need to perform fine-tuning only if the reception of the selected channels is not clear. You can either click the **Auto Tune** button or manually adjust the **Fine Tune** slider to get a clear TV picture.



Specifying a Channel Name or Description


To assign a channel name or specify a description:

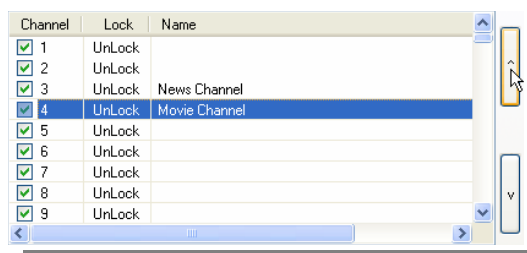
1. Click the **Setup** button  and click the **Channel** tab.
2. Under the *Name* column, double-click the text box of the channel you want to assign a name or description.
3. Type in the channel name or description, then press **Enter**.



Changing the TV Channel Order

You may change the sequence of TV channels in the channel list as you prefer.

1. Click the **Setup** button  and click the **Channel** tab.
2. Click on the channel which you want to move upward or downward.
3. Click the **UP** or **DOWN** button at the right side until the selected channel moves to the desired location.




4. Click **OK** to exit the dialog box.

Locking and Unlocking a TV Channel

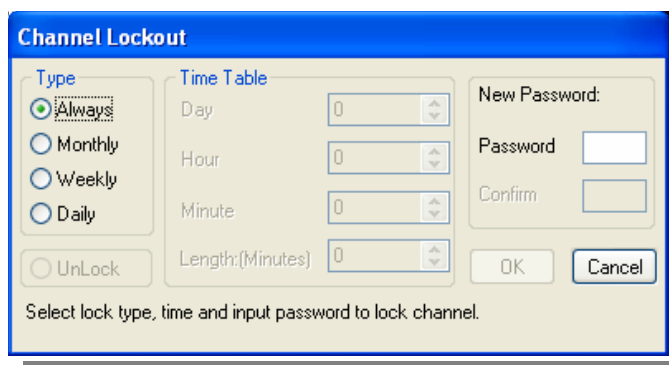
You may lock out certain TV channels (e.g. adult channels) if you want to prevent others from watching them.

To lock a TV channel:

- Click the **Setup** button  and click the **Channel** tab.
- Under the *Lock* column, double-click the “UnLock” item of a TV channel that you want to be locked.

Channel	Lock	Name
<input checked="" type="checkbox"/> 3	UnLock	News Channel
<input checked="" type="checkbox"/> 4	UnLock	Movie Channel
<input checked="" type="checkbox"/> 5	UnLock	
<input checked="" type="checkbox"/> 6	UnLock	

- The *Channel Lockout* dialog box will then appear.



The **Channel Lockout** dialog box contains the following elements:

- Type:** Radio buttons for **Always** (selected), **Monthly**, **Weekly**, and **Daily**. There is also an **UnLock** button.
- Time Table:** Spinners for **Day**, **Hour**, **Minute**, and **Length:(Minutes)**, all set to 0.
- New Password:** Fields for **Password** and **Confirm**.
- Buttons:** **OK** and **Cancel**.
- Instructions:** "Select lock type, time and input password to lock channel."


- Choose the lock **Type**, that is, how often you would like to lock out the TV channel. There are four types to choose from:
 - Choose **Always** if you want to lock out the TV channel all the time.
 - Choose **Monthly** to lock out the channel once a month, at a preset day.
 - Choose **Weekly** to lock out the channel once a week, at a preset day and time.
 - Choose **Daily** to lock out the channel everyday at a preset time.
- If you selected **Monthly**, **Weekly** or **Daily**, you will need to set the **Time Table**:
 - Set the **Day** of the month or week for when to lock out the channel (only if you selected **Monthly** or **Weekly**).

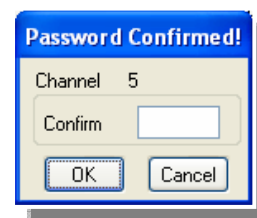
Choose the time to lock out the channel by adjusting the **Hour** and **Minute** settings appropriately.

Set the **Length** of time (in units of minutes), that is, how long the TV channel will be locked out.

10. Type a **Password** to use for unlocking the TV channel in the future.
11. Type the same password again to confirm.
12. Click **OK** to accept the new settings, or click **Cancel** to revert back to the original settings.

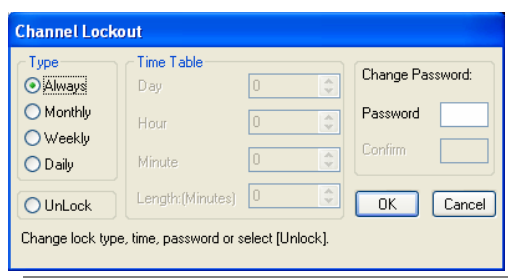
To unlock a TV channel:

13. Click the **Setup** button  and click the **Channel** tab.
14. From the channel list, click the locked channel. The *Password Confirmed* dialog box will then appear. (See figure at the right.) In the *Confirm* text box, type in the password for accessing the channel and click **OK**.
15. To unlock that channel, under the *Lock* column, double-click the “Lock” item.





Channel	Lock	Name
<input checked="" type="checkbox"/> 3	UnLock	News Channel
<input checked="" type="checkbox"/> 4	UnLock	Movie Channel
<input checked="" type="checkbox"/> 5	Lock	
<input checked="" type="checkbox"/> 6	UnLock	

16. The *Channel Lockout* dialog box will appear:



17. Select **UnLock**, then click **OK**.

Note

-  Please use at least four alphabetical and/or numeric digits as your password.
-  It is important to remember your password. You won't be able to unlock a channel or change the password without your current password. If you forget your password, you must reinstall the application.

Adjusting Volume



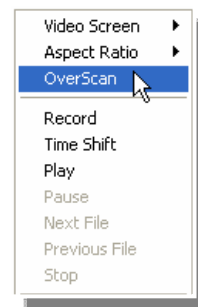
On the TV Control Panel, click and drag your mouse over the **Volume** meter to increase or decrease the volume level. You can also press the + and – keys to adjust the volume.

Using the OverScan Function


Sometimes the TV/video pictures may be distorted at the edges. You can enable the **OverScan** feature to hide the four borders of the TV/video frames.

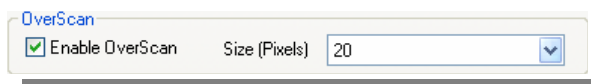
To hide the edges of the picture:

- Right-click on the TV Monitor and choose **OverScan** to have it checked.



OR,

- Click the **Setup** button  and click the **Video** tab. Then enable the **Enable OverScan** check box and select the width (in pixels) you'd like to hide from the Size (Pixels) drop-down list.




16-Channel Preview



The 16-channel preview function can display 16 TV channels on-screen at the same time. You can see clearly which TV programs are currently showing on these channels.

To preview the channels:

18. Click the **16 Channel Preview** button .
19. The screen will be gradually filled up with 16 TV channels, starting from the currently selected channel.
20. Click a channel to view it only and freeze the other channels.
21. To display a channel on the TV Monitor window, select any one of the 16 channels on-screen and double-click the left mouse button on that channel, or use the arrow \uparrow , \downarrow , \leftarrow , or \rightarrow buttons of your keyboard then press **Enter**. You will then be tuned in to that channel. (Or, Click the right mouse button or press **ESC** to return to the originally selected TV channel.)


Selecting Between TV and External Video

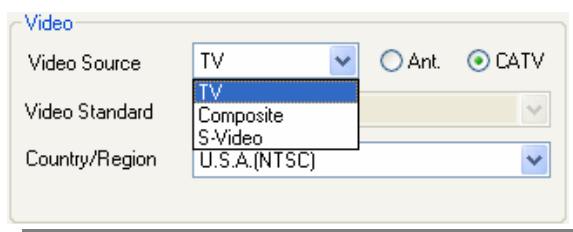


If you want to watch video from an external source such as a VCR or camcorder, click the **Change Video Source** button to switch between watching TV, a Composite video source, and S-Video source.

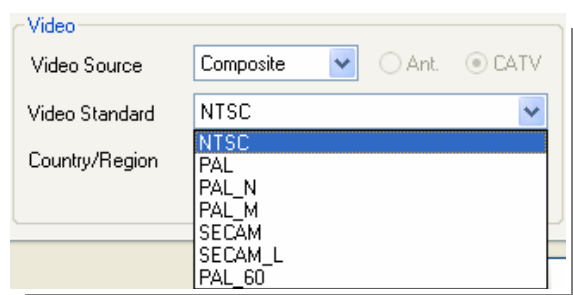
Setting the Video Format of External Video

To set the video format used by the external video source, do the following:

22. Click the **Setup** button  and click the **Channel** tab.
23. From the *Video Source* drop-down list, choose the type of external source: Composite or S-Video.




24. From the *Video Standard* drop-down list, select the proper video format.



Modifying TV Channel Frequencies

It is not recommended to edit the frequencies of TV channels unless you are very familiar with local TV frequencies.


To edit the TV frequencies:

25. Click the **Setup** button  and click the **Channel** tab.
26. In the **Channel List** section, drag the horizontal slider rightward to the end.
27. Double click over the channel frequency that you want to modify, type the desired frequency, and then press **Enter**.

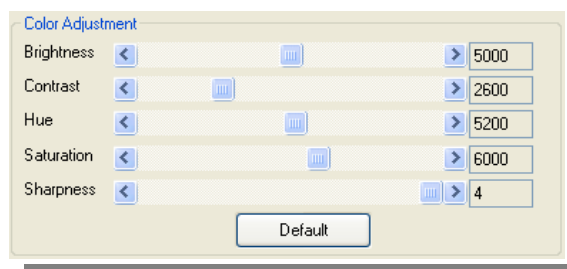
Name	Frequency
	55.25
News Channel	61.25
Movie Channel	67.25
	77.25

28. Click **OK** to exit the dialog box.

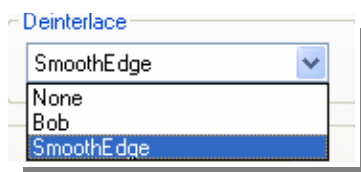
Fine tuning Color and Display Quality

 If the color or picture quality of the TV/video display needs to be adjusted, click the **Setup** button and click the **Video** tab.

To adjust the color of the TV or video picture, adjust the **Brightness**, **Contrast**, **Hue**, **Saturation** and **Sharpness** sliders until you get an accurate color. (If you change your mind and want to change back to the factory default settings, click **Default**.)



The *Deinterlace* function can remove the jagged edges of images in serial rapid movements. It is recommended using this function to ensure smooth and clear video images. You can select either **Bob** or **SmoothEdge** to deinterlace the video image.



Note

Bob and **SmoothEdge** represent two different algorithms. Try both options to compare which can give you the best picture quality.



CHAPTER 4

IMAGE CAPTURE


While you watch live TV or video from your PC monitor, you can use the **UltraTV** application to capture images for your document, presentation or web page.

Before Capturing

Before you start capturing images, first set the destination folder for saving captured images.

Click the **Setup** button  then click the **Snapshot** tab. Click  to choose a folder where you want to save captured images.


Capturing a TV/ Video Image

 To capture a still image, click the **Snapshot** button. The *Album* will then appear, displaying thumbnails of the captured image.




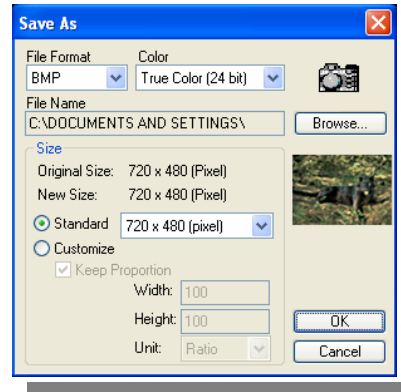
To capture another image, click **Snapshot** again. New thumbnails and pages will be added to the *Album* as you capture more images.

To display the captured image on your desktop:

29. Select the thumbnail of the desired image then click the **Desktop Wallpaper** button .
30. The selected image will be displayed as your wallpaper, the background of your desktop.

To save the captured image:

31. Select the thumbnail of the image then click the **Save As** button . The *Save As* dialog box will then appear.



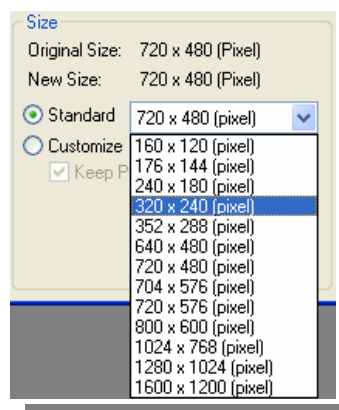
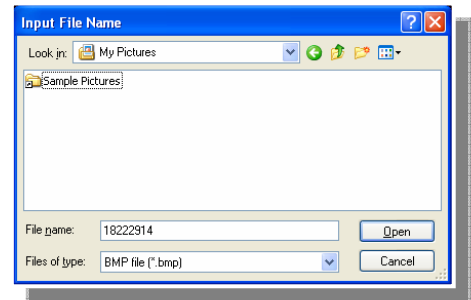
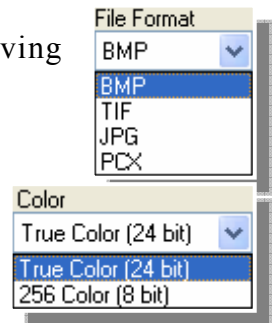
32. From the *File Format* drop-down menu, select the format for saving the captured image.
33. Choose the *Color* format.

Choose 24-bit to capture image in 16M colors.

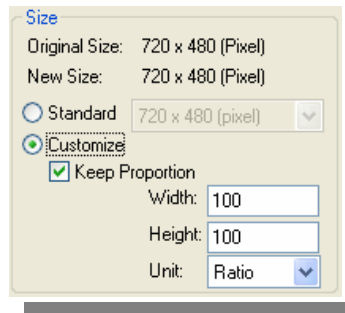
Choose 8-bit to capture image in 256 colors.

34. Click **Browse** to scan for folders and select a destination location for saving the image. Then specify a file name for saving the captured image.
35. Choose the image size.

In the *Size* section, select the **Standard** option and choose a desirable image size from the drop-down list.



If you want to set your own image size, select **Customize** and enter the image **Width** and **Height**. If you want to maintain relative width and height, select the **Keep Proportion** option. Choose a measurement unit from the **Unit** drop-down list. You can specify any image size you want. The maximum capture size can be 1600×1200.

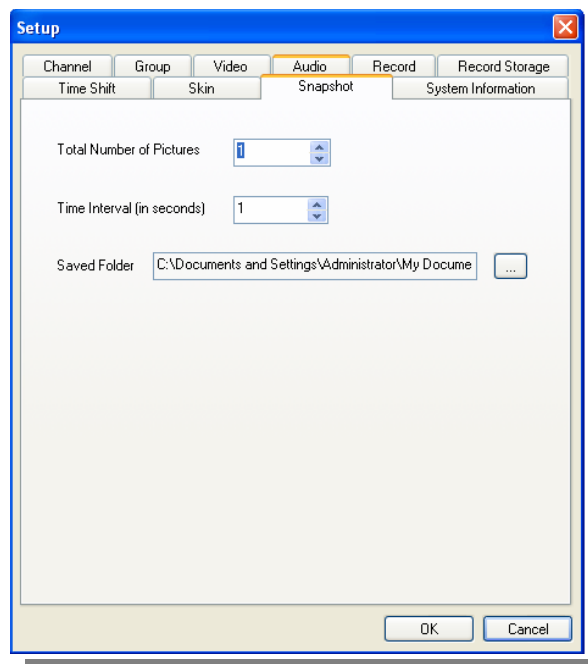


36. Click **OK** to save the image. Click **Cancel** if you do not want to save the image.

Multiple Image Sequence Capture

To capture a continuous sequence of images, do the following:


37. Click the **Setup** button  then click the **Snapshot** tab.



38. In the *Total Number of Pictures* box, specify the number of images you want to capture.

39. In the *Time Interval (in seconds)* box, specify the interval between captures. For instance, if you specify 10 seconds, an image will be captured every 10 seconds.


40. Click **OK** to save the new settings. Click **Cancel** if you do not want to change the settings.

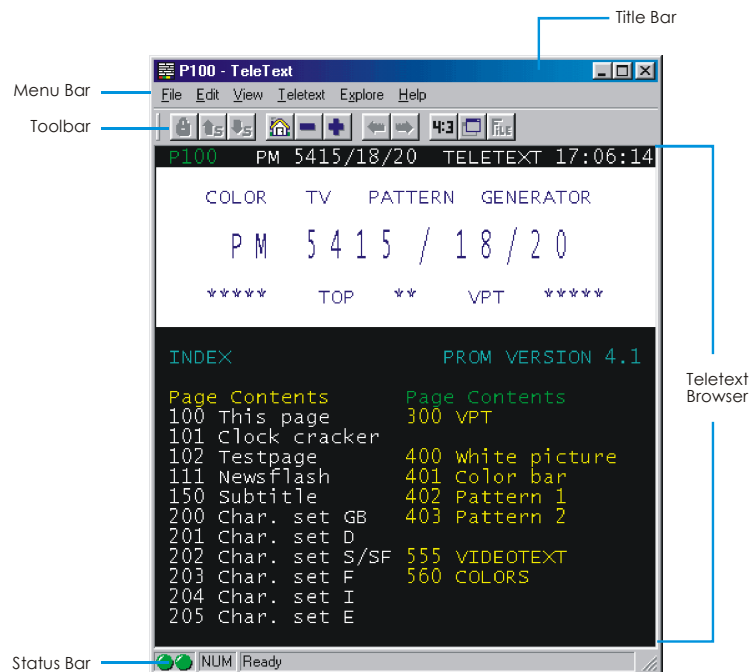
41. Click the **Snapshot** button  to start capturing.

CHAPTER 5 TELETEXT (FOR PAL SYSTEM)

Teletext makes TV viewing a unique experience. It views teletext broadcast from your television programs and get the most updated information on TV Schedules, News, Stock Market Prices, Concert & Theatre information and so on. Teletext information may not be available if there is no such service provided in your region or country.

Overview

Click the **Teletext** button  to evoke the Teletext application as shown below.



➤ Title Bar

This is located at the top of the window. It contains the current displayed page number or in hexadecimal page number of an active window.

➤ Menu Bar

This contains the names of the available pull-down list option menus. To access any of the menu items, simply click on it or press the Alt button and the underlined character.

➤ Toolbar

It includes buttons that gives quick access to perform certain frequently used functions from the **Menu Bar**.

➤ **Teletext Browser**

Teletext information is displayed in this area. The information would be the TV schedules, news, stock market reports, concert & theater information and so on.

➤ **Status Bar**

Status bar is located at the lower left corner of the window. It contains a short text message or explanation of the currently selected menu command.

Toolbar Buttons

➤ **Lock Subpage**

Locks the current subpage. The upcoming transmitted subpages will be stored in the Teletext Cache for later use.

➤ **Previous Subpage/ Next Subpage**

Switches to the next or the previous subpage.

➤ **Home (Ctrl+H)**

Connects to the teletext home page which always goes to page 100, but page 100 may not be the primary teletext source.

➤ **Previous Page (-) / Next Page (+)**

Displays the preceding or the succeeding teletext or in hexadecimal page number.

➤ **History Back / History Forward**

Retrieves the previous page in the history list.

Moves a page forward in the history list. The command is usable after one or more back steps in the history list.

➤ **TV Scale**

Changes the proportion of the Teletext window to 4 by 3.

➤ **Always On Top**

Makes Teletext Window float over the top of other applications.

➤ **Teletext File**

Switches between the Teletext file which is opened from the previously saved file and the most recent Teletext information.

LED Lamp

Different LED color indicates different state.

► Left LED Lamp:

Green -- The cache in Teletext application is running less than 90% usage.

Yellow -- The cache in Teletext application is running over 90% usage.

Red -- The cache in Teletext application is running out.

► Right LED Lamp:

Gray -- The system does not receive the teletext broadcast data.

Green -- The system is receiving the teletext broadcast data.

Using Teletext

The following briefly describes how to use the Teletext feature.

► Teletext Page

There are two page numbers displayed on the first line of each teletext page. The page number on the left is the page number that you have selected or keyed in. The one appears in the middle of line is the page number of the currently displayed teletext data.

The newly selected page number will appear on the upper left corner of the page. Sometimes, this may take a short while to retrieve the newly selected teletext page. There will be no changes on the page when there is no page data transmitted with the number you have selected.

A teletext page can be selected with one of the following methods:

- Key in the hexadecimal or teletext page number using the numeric buttons of your keyboard or AVerMedia TV remote control.
- Press the + (positive) or – (negative) button to move to the succeeding or preceding teletext page.

► Copying a Teletext Page

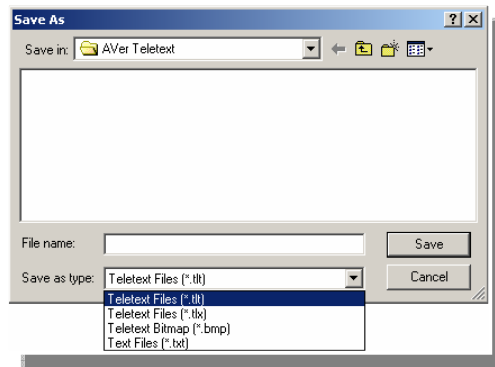
1. Simply click and drag over the text or the area that you want to copy using the mouse.
2. Choose **Copy** from the **Edit** menu (*Alt+E, C*) or press *Ctrl+C*.

3. You can then paste the contents of the teletext page in TXT or BMP format to a document you are working with.

► Saving a Teletext Page

Some teletext pages include a number of subpages. If the file has subpages, teletext will also save the existing subpages.

1. A teletext page can be saved using one of the following ways:
 - To automatically save the file using the displayed teletext page as the filename and the default file format, choose **Save** from the **File** menu or press *Ctrl+S*.
 - To save the file by specifying your own filename and different file format, choose Save As from the File menu or press *Ctrl+A*.
2. A save as dialog box will appear:



3. Select the file format to use for saving the teletext page. You can save the teletext page in :

TXT Text file format

BMP Windows bitmap file format

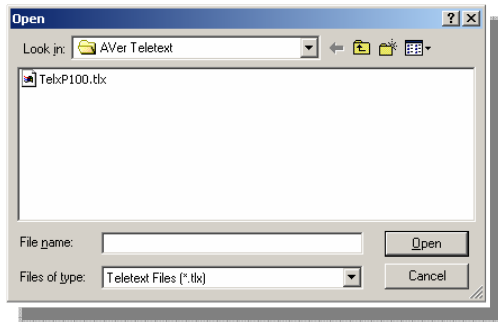
TLT Teletext file format

TLX Teletext file format

4. Enter a filename and click OK.

► Opening a Teletext Page

1. Choose **Open** from the **File** menu or press *Ctrl+O*.
2. From the Open dialog box, select the file containing the teletext page you want and click **OK**.



➤ **Opening Another Teletext Window**

To open another teletext window, choose **New Window** from the **File** menu or press *Ctrl+W*.

➤ **Closing the Active Teletext Window**

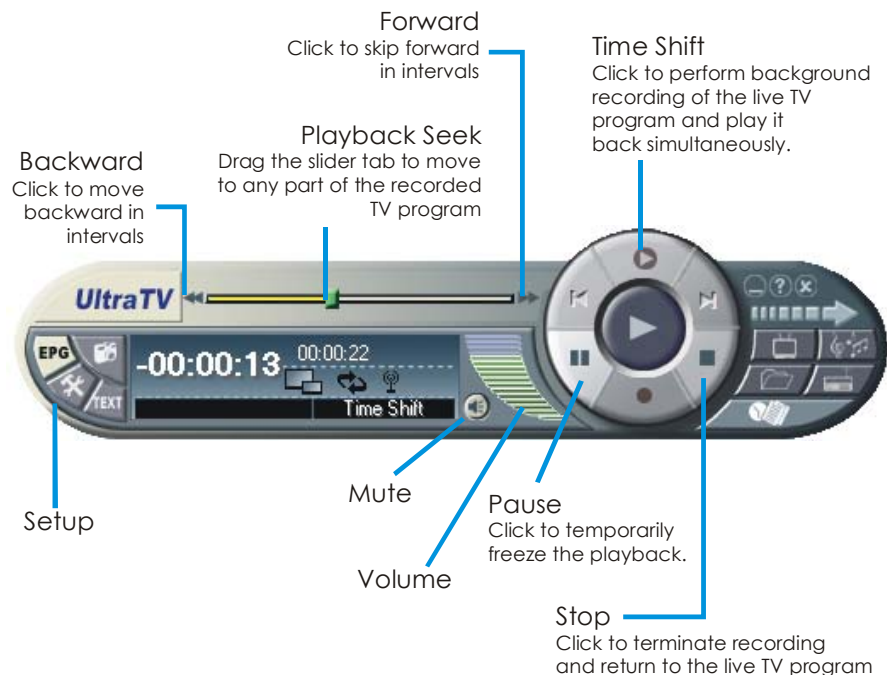
Choose **Close Window** from the **File** menu or press *Ctrl+L* to close the active teletext page window.

CHAPTER 6 TIME SHIFT

The Time Shift function performs background recording of a TV program, and lets you return and watch any part of the recorded program. At the same time, the live TV program continues to be recorded and played back so you won't miss any part of the show. You can also advance forward to skip commercials or rewind to replay scenes one more time.

Time Shift Controls


Use the following button controls in the Control Panel to start recording a live TV program, play back the program from where you left off, advance forward, rewind, and more.

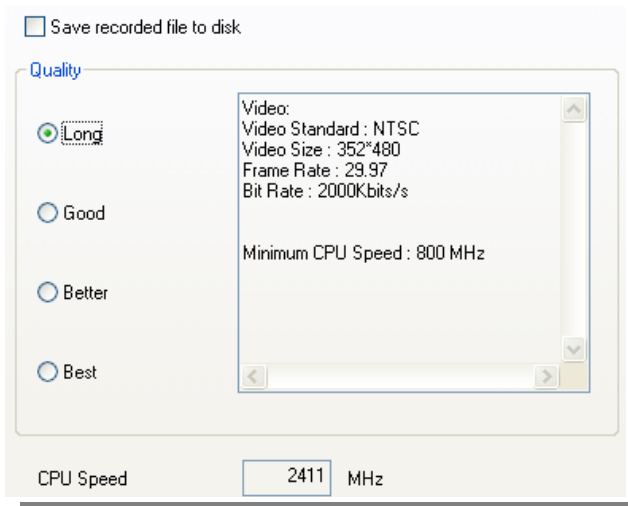



Customizing Time Shift Settings

Before you start using the Time Shift function, first check its recording settings to see if they fit your needs.

To check and customize settings:


1. Click the **Setup** button  then click the **Time Shift** tab. You will then see the following settings.



2. By default, Time Shift performs recording of the TV program by creating a temporary video file and deletes this file once you click the **Stop** button to switch off this function. If you want to save the video file, select the **Save recorded file to disk** option.
3. Select the video **Quality** that you want for the recorded program. When you click an option, details such as video size, frame rate, etc. will be displayed in the box at the right. The minimum CPU speed required will also be shown for your reference. Make sure that your computer's CPU performance is fast enough and meets the requirement.
4. If you choose to save TV recordings as video files in step 2, set a destination folder for saving the files. Click the **Record Storage** tab, and under **Saved Folder**, click  to choose a folder in which to save the video files.
5. Click **OK** to apply the new settings, or click **Cancel** to use the original settings.

Using the Time Shift Function

To pause the live TV program and then replay:

1. Click the **Time Shift** button . You can now leave your computer and let the application record the TV program.
2. When you're back and want to replay, use the **Playback Seek** slider bar to move back to the part where you left off. Click and drag the slider tab to the left until you see the part of the show where you were watching earlier, then release the mouse button to replay from there.



3. You can also click the **Backward** button ◀ to move backward in fixed intervals until you reach the part where you left off.
4. To advance forward and skip some parts of the recording (for example TV commercials), drag the slider tab to the right. You can also click the **Forward** button ▶ to move forward in fixed intervals.
5. To temporarily pause the playback, click the || **Pause** button. Click the **Pause** button again to resume.
6. To return to real-time viewing of the live TV program, click the ■ **Stop** button. This switches off the Time Shift function and returns you to live TV.

Note

If the TV recording was saved as a video file in a specified folder, you can play it back anytime you want. Refer to Chapter 7 DVR to know more on how to open and play back recorded video files.

CHAPTER 7

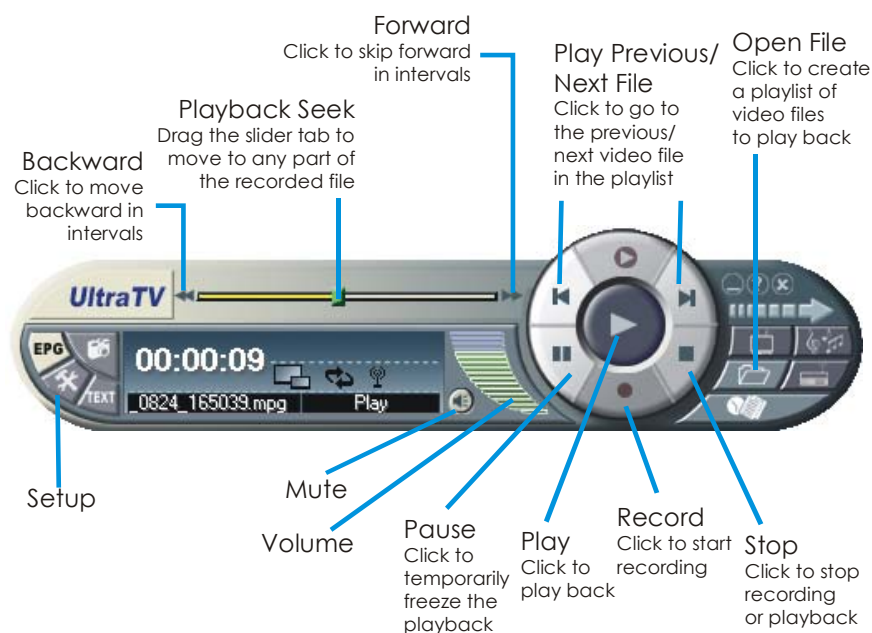
DVR

You can use your computer as a digital video recorder, and record your favorite TV programs or capture video from an external source into your hard drive. Record programs or video in high-quality AVI, MPEG-1 or MPEG-2 file format. You can also save the recordings in VCD, SVCD or DVD format for burning on discs.


When playing back a recorded file, you can view it individually or simultaneously play the recording while watching live TV in a picture-in-picture window.



DVR Controls




Use the following button controls for recording and video playback.



Recording Programs or Video

Select a TV channel that is showing the TV program that you want to record. Whereas to record video, click  to switch to the Composite or S-Video source. Then follow the procedure below to record.

1. First, determine the length of recording you want and the destination folder where to save the recording. Click the **Setup** button  and click the **Record Storage** tab. Then specify a **Duration** or choose the **Unlimited** recording option. Click  to choose a destination folder. (Refer to the section titled **Setup** for more details.)

2. Next, determine the video file format to use for saving the recorded video files. Click the **Record** tab, then choose MPEG-1, MPEG-2, AVI, VCD, SVCD, or DVD format. (Refer to the section titled **Setup** for more details.)
3. Click the **Record** button  to start recording the current TV program or video.
4. If you want to hide both of the screen and sound of the TV program/video which is being recorded, right-click anywhere over the TV Monitor, and select **Silent Record**. To watch the TV program/video again, double click the **UltraTV** icon  in the lower right corner of the screen.
5. Wait until the recording time preset in **Duration** expires or click the **Stop** button  to end the recording.




Playing the Recorded Programs or Video

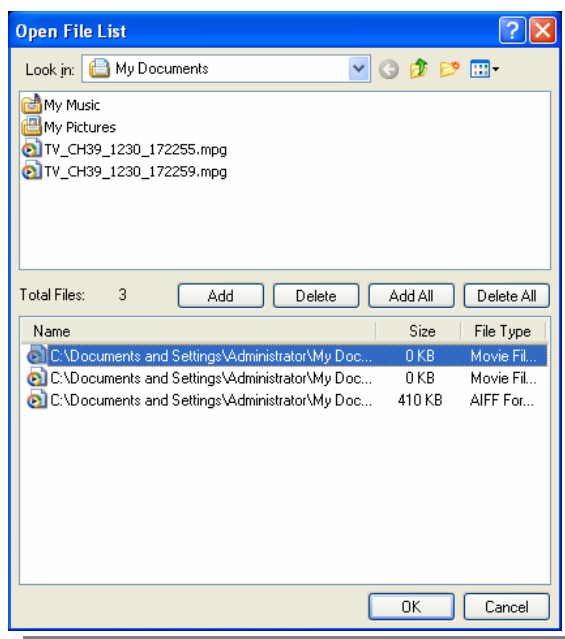
Each TV program or video that you recorded will be saved as a video file in the assigned destination folder.

To play back the recorded video files:

Click the **Play** button  to play back.

OR,


- (1) Click the **Open File** button , then select **Open File List** to display the *Open File List* window. All the recorded video files are listed at the bottom pane of the *Open File List* window. This is the default playlist of video files.
- (2) To delete files from the playlist, select them from the list in the bottom pane and click **Delete**, or click **Delete All** to delete all files in the playlist.

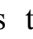


- (3) To add more video files to the playlist, first navigate the *Look in* field on the top pane to find the folder that contains the desired video files. When you have located the folder, the media files will then be displayed on the top pane. Select the files that you want, then click **Add**, or click **Add All** to add all media files in the folder to the playlist.
- (4) To start playback, simply click **OK**. The application will start playing each of the files in the playlist. (To move to the previous or next file in the playlist, click the ◀ or ▶ button.)

Picture-in-Picture Display

With the picture-in-picture window feature, you will be able to play back recorded video files, and at the same time, watch live TV.

If picture-in-picture window is disabled, you will see the  icon on the Control Panel. Click this icon to enable the picture-in-picture window.

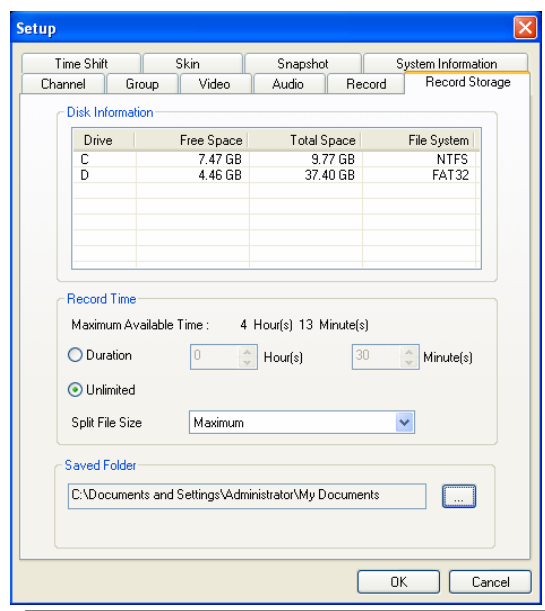
When you see the  icon on the Control Panel, it means that picture-in-picture window is enabled. By default, you will be able to play back recorded video files on the main window, and at the same time, watch live TV on the smaller picture-in-picture window. If you want to switch the video playback to the picture-in-picture window and the live TV to the main window, just double-click the smaller window.

You can freely move the picture-in-picture window around the main window. Just drag it to the position you want on the main window.

Setup

The **Record Storage** and **Record** tabs in the *Setup* dialog box provide settings for customizing capture duration, file size, video format, and more.

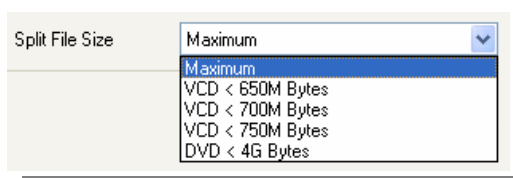
➤ Record Storage Tab



➤ Recording Duration and File Size

Specify the desired length of recording. Select **Duration** and enter the time length in number of hours and minutes. Otherwise, if you do not have any specific time length requirement, select the **Unlimited** option. The application will record the largest clip that your hard disk can accommodate.

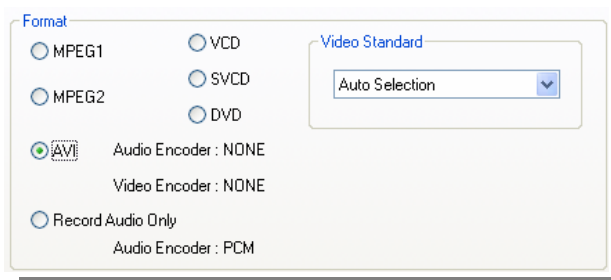
If you will be recording programs or video for burning to discs such as VCD or DVD, select the appropriate video file size for the target disc capacity so that each video file will not exceed the limit. Choose the file size from the **Split File Size** drop-down list.



➤ Destination Folder

Under **Saved Folder**, click the **Browse** button [...] to choose a folder in which to save the recorded video files. (Video files will be named with default file names.)

➤ Record Tab

➤ **Video Format and Video Standard**

Under **Format**, select a video file format that you want to use for saving recorded programs or video. These are the available video formats:

■ **MPEG-1**

Choose MPEG-1 format for video files that are intended for CD-ROM playback on a computer or for Internet transmission. MPEG-1 allows file compression and offers VHS quality picture. Just about every system available today can play MPEG-1 and does not need special software or hardware.

■ **MPEG-2**

Videos compressed using MPEG-2 have extremely high quality pictures and full CD-quality sound. Choose MPEG-2 format for video files that are intended for DVD-ROM playback on a computer or if you want broadcast quality videos.

■ **VCD**

When you choose this format, the recorded video file will be saved in MPEG-1 format that is compliant with VCD standards. Standard VCD frame size and frame rate are 352 x 240 pixels at 29.97 fps for NTSC and 352 x 288 pixels at 25 fps for PAL.

■ **SVCD**

When you choose this format, the recorded video file will be saved in MPEG-2 format that is compliant with SVCD standards. Standard SVCD frame size and frame rate are 480 x 480 pixels at 29.97 fps for NTSC and 480 x 576 at 25 fps for PAL.

■ **DVD**

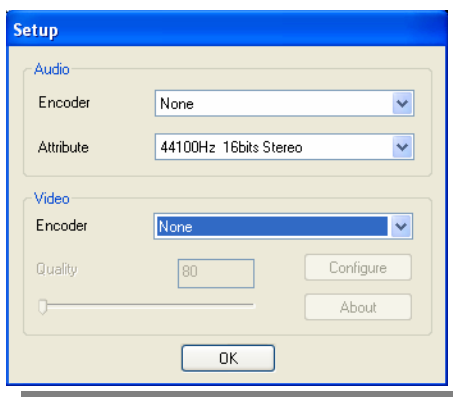
When you choose this format, the recorded video file will be saved in MPEG-2 format that is compliant with DVD standards. Standard DVD frame size and frame rate are 720 x 480 pixels at 29.97 fps for NTSC and 720 x 576 at 25 fps for PAL.

■ **AVI**

AVI is the most common video file format for playback on the computer. It can be saved in uncompressed form if you want high quality video, or compressed using any of the available codecs if you want to minimize the file size.

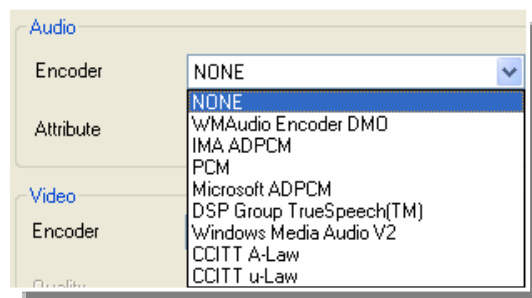
From the *Video Standard* drop-down list, selecting **Auto Selection** allows the application to automatically set the video standard for recorded video files based on the video system used by the current video source (selected in the **Channel** tab).

To customize AVI setting, click the **Setting** button at the bottom of the *Setup* dialog box, and AVI's *Setup* dialog box will appear. You can choose a Video or Audio codec from the *Encoder* drop-down list.

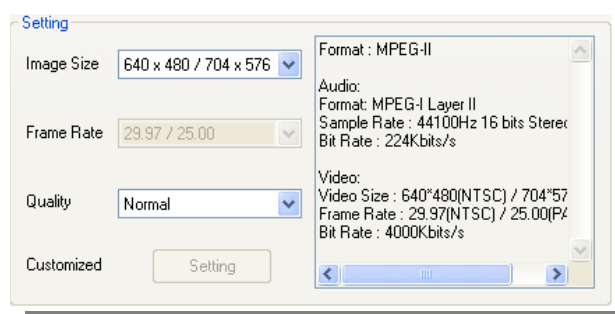


➤ **Record Audio Only**

If you want to record only the audio from a TV program or video, enable *Record Audio Only*. Then click the setting button at the bottom of the *Setup* dialog box. In the *Audio Setup* dialog box, select a file format from the *Encoder* drop-down list.



➤ *Image Size, Frame Rate and Quality Settings*



The **Image Size**, **Frame Rate**, and **Quality** settings are enabled for selection depending on what video file format you have chosen for your video files.

■ **Image Size**

Choose preset dimensions for your captured video from the drop-down list.

■ **Frame Rate**

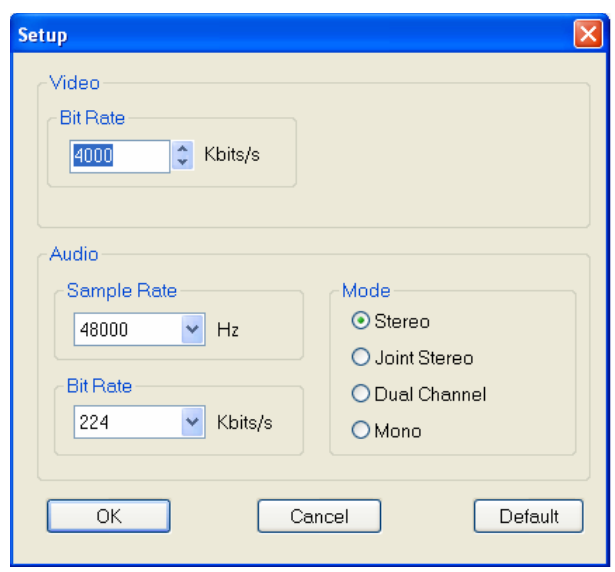
This sets the number of frames to capture per second. You can choose from the available frame rates.

■ **Quality**

Select **Highest** quality to capture high quality video clips. This creates large files, especially when you are recording long clips. To have smaller file sizes, select other quality options.

If you select the **Customized** option, the **Setting** button will be enabled. Click this button to customize advanced video and audio capture settings.

➤ *Customized Settings*



■ Video and Audio Bit Rate

Set the desired video and audio capture bit rate. Higher rate produces better quality, but this will take up more space on your hard drive. If you plan to use the clip for the Web, the recommended settings are 300Kbps for video and 64Kbps for audio. For Video CD authoring, use the standard 1150Kbps for video and 224Kbps for audio.

■ Sample Rate

To convert an analog signal to digital, your computer takes measurements of the sound wave's amplitude (a sample) at particular points in time. The more samples the computer takes, the more information it obtains and thus, the closer it comes to capturing something close to the original sound. 44.1 KHz is CD quality sound and is the default setting.

■ Mode

You have four audio channel choices to choose from for MPEG 1/2: Stereo, Joint Stereo, Dual Channel, and Mono. To obtain high-fidelity and CD quality sound, use Joint Stereo.

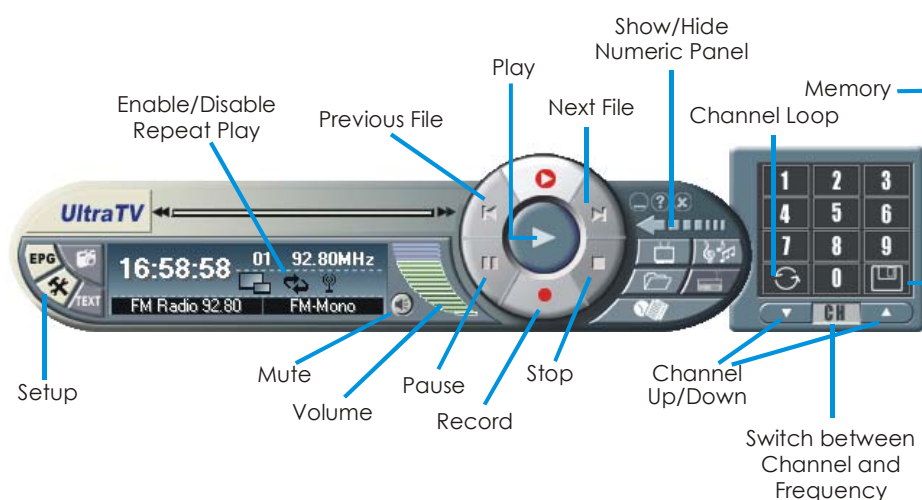
CHAPTER 8


FM Radio

FM Radio Controls

 Click the **FM Radio** button to listen to your favorite radio station programs.

Use the following button controls for selecting FM radio channels, adjusting volume, scanning FM channels, recording radio programs and more.



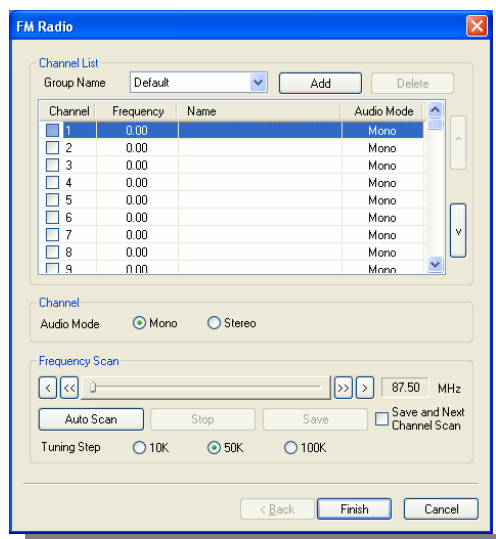
 To change back to live TV, click the **Change Video Source** button.

How to Auto Scan FM Radio Channels

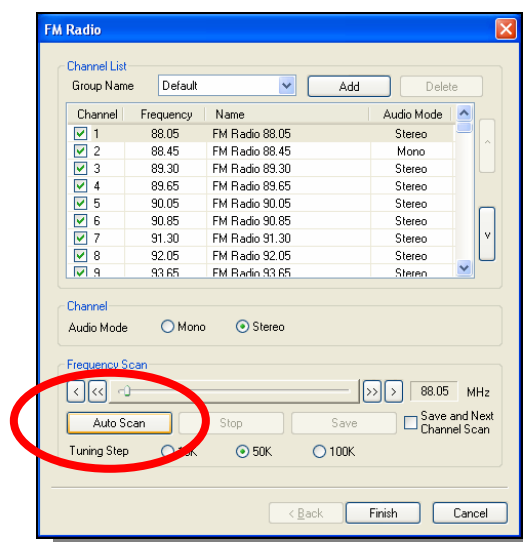
If this is your first time to use FM radio, perform auto scan to search and memorize active FM radio stations in your area.

To auto scan FM radio stations:

1. If this is your first time to switch to FM radio, the *FM Radio* dialog box will automatically appear.



2. Click the **Auto Scan** button. All active channels will be automatically scanned and memorized. Up to 99 preset channels can be memorized.






3. Click **Finish**.

Manually Scanning Specific FM Channels

Instead of scanning all channels, you can choose to manually scan one or a few channels only. To do this, follow these procedures.


To manually rescan specific FM radio channels:



1. Click the **Setup** button  and click the **FM Radio** tab.
2. To manually scan two or more consecutive channels, you can enable the **Save and Next Channel Scan** check box.
3. Click on the channel you want to rescan in the **Channel List**.

4. Click  to scan upward or  to scan downward from the selected channel frequency. The scanning will stop when the application finds the closest ACTIVE FM frequency.
5. Click the **Save** button if you'd like to keep the newly scanned frequency.
6. If the **Save and Next Channel Scan** check box is enabled in Step 2, the application will automatically scan the next succeeding channel each time after the **Save** button is pressed. Click the **Stop** button when you want to stop the scanning operation.

Channel Versus Frequency Selection


You can tune to FM radio by channel or frequency.

By default, the Numeric Panel allows you to select memorized radio channels, as indicated by the **Channel** button  on the panel.

You can switch to selecting radio frequencies by clicking the  button. When you see the button change into the **Frequency** button , clicking on the number buttons on the Numeric Panel allows you to select radio frequencies.

Selecting a Channel

To select a channel:



1. Click  to open the *Numeric Panel*.
2. There are a number of ways to select a channel:
 - Click on the **Numeric buttons** to select a channel.
 - Click the **Channel Up/Down** button until you reach your desired channel.


OR,

- Use the **numeric keys** on your keyboard to select a channel.

Selecting a Radio Frequency

To select a radio frequency:

1. Click the **Channel** button . The button then changes to the **Frequency** button .
2. There are a number of ways to select a radio frequency:

- Click the **Numeric buttons** on the Numeric Panel.
- Click the **Tuning (-)/(+)** button  to increase/decrease the radio frequency.

OR,

- Use the **numeric keys** on your keyboard to enter a radio frequency.


You can save the selected radio frequency to a channel. Refer to the section titled [Saving a Radio Frequency to a Channel](#) for details.

Note

When selecting a radio frequency, be sure that it is within the acceptable range of FM radio frequencies in your area. If you entered a frequency which is out of range, the UltraTV application will disregard this invalid frequency. The application will then automatically tune the FM radio back to the previous frequency.

Skipping Unwanted Channels

If you want to exclude undesirable channels from your FM channel list, do the following:

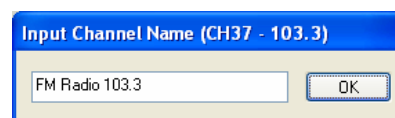
1. Click the **Setup** button  and click the **FM Radio** tab.
2. In the *Setup* dialog box, *Channel* column, click the unwanted channel. The check mark will be removed, indicating that the channel will be excluded from your channel list and that you won't be able to access and hear them through the **Channel Up/Down** button.

Channel	Frequency	Name
<input checked="" type="checkbox"/> 1	63.00	FM Radio 63.00
<input checked="" type="checkbox"/> 2	63.50	FM Radio 63.50
<input checked="" type="checkbox"/> 3	64.00	FM Radio 64.00
<input type="checkbox"/> 4	65.10	FM Radio 65.10
<input checked="" type="checkbox"/> 5	65.75	FM Radio 65.75

Saving a Radio Frequency to a Channel


To assign a selected radio frequency to a channel:

1. First, select a channel. Refer to the section titled [Selecting a Channel](#) for details.
2. Now select a radio frequency. Refer to the section titled [Selecting a Radio Frequency](#) for details.
3. Click the **Memory** button. The *Input Channel Name* dialog box will then appear.
4. Enter a descriptive channel name and click **OK**.



Modifying or Adding FM Radio Channels

You can manually add a new FM radio channel if the desired channel cannot be found through scanning operation, or modify any existing FM radio channel.

1. Click the **Setup** button , and then click the **FM Radio** tab.
2. Double click on the **Frequency** and/or **Name** column of the existing or blank FM channel which you want to modify or add.
3. Enter the frequency and the name you want in the provided text box(es), and then press **Enter**.


Channel	Frequency	Name
<input checked="" type="checkbox"/> 70	106.90	FM Radio 106.90
<input checked="" type="checkbox"/> 71	107.30	FM Radio 107.30
<input checked="" type="checkbox"/> 72	107.75	FM Radio 107.75
<input type="checkbox"/> 73	99.85	
<input type="checkbox"/> 74	0.00	

Channel	Frequency	Name
<input checked="" type="checkbox"/> 70	106.90	FM Radio 106.90
<input checked="" type="checkbox"/> 71	107.30	FM Radio 107.30
<input checked="" type="checkbox"/> 72	107.75	FM Radio 107.75
<input type="checkbox"/> 73	99.85	My Favorite
<input type="checkbox"/> 74	0.00	

4. To add or modify more channels, repeat steps 2 to 3.
5. Click **OK** to exit the dialog box.

Changing the FM Radio Channel Order

You may change the sequence of FM radio channels in the channel list as you prefer.


1. Click the **Setup** button , and then click the **FM Radio** tab.
2. Select the channel which you want to move upward or downward.
3. Click the **UP** or **DOWN** button at the right side until the selected channel reaches the desired location.

Channel	Frequency	Name	Audio Mode
<input checked="" type="checkbox"/> 1	63.00	FM Radio 63.00	Stereo
<input checked="" type="checkbox"/> 2	63.50	FM Radio 63.50	Mono
<input checked="" type="checkbox"/> 3	64.00	FM Radio 64.00	Mono
<input checked="" type="checkbox"/> 4	65.10	Good Night	Mono
<input checked="" type="checkbox"/> 5	65.75	FM Radio 65.75	Mono
<input checked="" type="checkbox"/> 6	66.30	FM Radio 66.30	Mono
<input checked="" type="checkbox"/> 7	67.25	FM Radio 67.25	Mono
<input checked="" type="checkbox"/> 8	67.50	FM Radio 67.50	Mono
<input checked="" type="checkbox"/> 9	68.45	FM Radio 68.45	Stere

Setting the Audio Mode

The application will automatically set each FM radio channel to *Mono* or *Stereo* based on the audio mode of the FM radio signals received. You can change the audio mode of a stereo FM radio signal to *Mono* or vice versa.

To change the audio mode:

1. Click the **Setup** button , and then click the **FM Radio** tab.
2. Click on the channel whose audio mode you want to change.
3. Select the **Audio Mode** option you want: **Mono** or **Stereo**.

Audio Mode Mono Stereo


Note

If the audio quality of a FM radio channel is found unstable or a bit poor, you can also try to switch the audio mode between Mono and Stereo to get a better audio quality.

Adding and Deleting Channel Groups

Selecting a Channel Group allows you to switch between the channels of the selected group only when pressing the **Channel Up/Down** button. If you want to add or delete an FM channel group, do the following:


To add a new channel group:

1. Click the **Setup** button , and then click the **FM Radio** tab.
2. Click the **Add** Button.

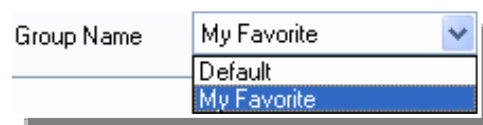
Group Name

3. The *New Group Name* dialog box will appear. Type the group name you want and then click **OK**.
4. Now you can start to scan FM radio channels and manage the scanned FM data for this new channel group. For more information, refer to [How to Auto Scan FM Radio Channels](#) and *other titles* respectively.
5. To add more channel groups, repeat steps 2 to 4.

To delete a channel group:

1. Click the **Setup** button , and then click the **FM Radio** tab.


- From the *Group Name* drop-down list, select the name of the group you want to remove.
- Click **Delete** to remove the selected group.





Tuning the FM Radio Frequencies

You can tune the FM radio for better signal reception if the reception is not clear. First, select or go to the channel which you want to tune. Then do one of these three ways.


- Click the **Tuning (+)/(-)** buttons  on the FM Control Panel.

OR click the **Setup** button , choose the **FM Radio** tab, and do one of the following:

- Click  or  to increase/decrease the frequency and then click the **Save** button.
- Drag the slider (in the **Frequency Scan** section) to the location you want and then click the **Save** button.




Specifying the Tuning Increment

You can choose to tune the FM frequency by 0.1, 0.05 or 0.01MHz.

- Click the **Setup** button , and then click the **FM Radio** tab.
- Select **10K** (0.01MHz), **50K** (0.05MHz) or **100K** (0.1MHz) as your tuning increment.





- Click **OK**.

Afterward when you click the **Tuning (+)/(-)** buttons  or  /  in the **FM Radio** tab, the frequency will increase/decrease based on the **Tuning Step** you have specified.

Recording FM Radio Broadcast

You can record FM radio broadcasts to your hard disk.

To record an FM radio broadcast:


1. Specify audio recording settings. Refer to the section titled *Customizing Audio Recording Settings* for details.
2. Click the **Record** button .
3. Click the **Stop** button  to end the recording.

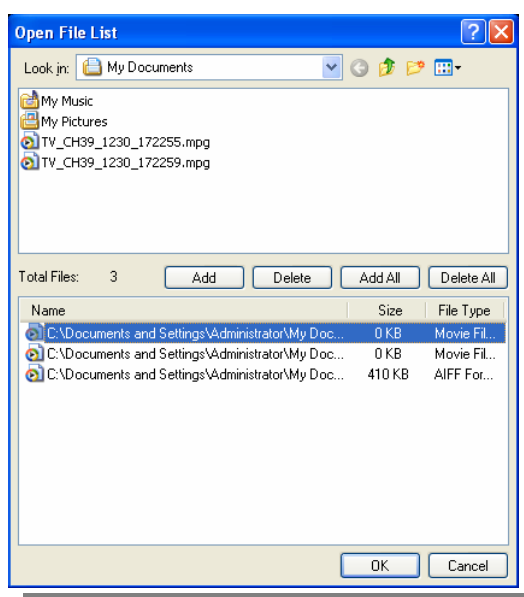
Playing the Recorded Audio

To play back the recorded audio files:

Click the **Play** button  to play back.

OR,


- (1) To play the recorded audio files one after another, click the **Open File** button  to display the *Open File List* window. All the recorded audio files are listed at the bottom pane of the *Open File List* window. This is the default playlist of audio files.
- (2) To delete files from the playlist, select them from the list in the bottom pane and click **Delete**, or click **Delete All** to delete all files in the playlist.
- (3) To add more audio files to the playlist, first navigate the *Look in* field on the top pane to find the folder that contains the desired audio files. When you have located the folder, the media files will then be displayed on the top pane. Select files that you want and then click **Add**, or click **Add All** to add all media files in the folder to the playlist.



- (4) To start playback, simply click **OK**. The application will start playing each file in the playlist. (To move to the previous or next file in the playlist, click the ◀ or ▶ button.)

Using the FM Time Shift Function

You can use the Time Shift function to perform background recording of an FM radio program and even replay.


1. Click the **Time Shift** button . You can now leave your computer and let the application record the FM program.
2. When you're back and want to replay, use the **Playback Seek** slider bar to move back to the part where you left off. Click and drag the slider tab to the left until you hear the part of the show where you were listening earlier, then release the mouse button to replay from there.

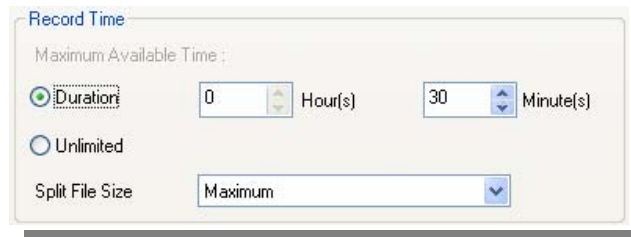



3. You can also click the **Backward** button ◀ to move backward in fixed intervals until you reach the part where you left off.
4. To advance forward and skip some parts of the recording (for example FM commercials), drag the slider tab to the right. You can also click the **Forward** button ▶ to move forward in fixed intervals.
5. To temporarily pause the playback, click the **Pause** button ||. Click the **Pause** button again to resume.
6. To return to real-time FM radio program, click the **Stop** button ■. This switches off the Time Shift function and returns you to live FM radio.

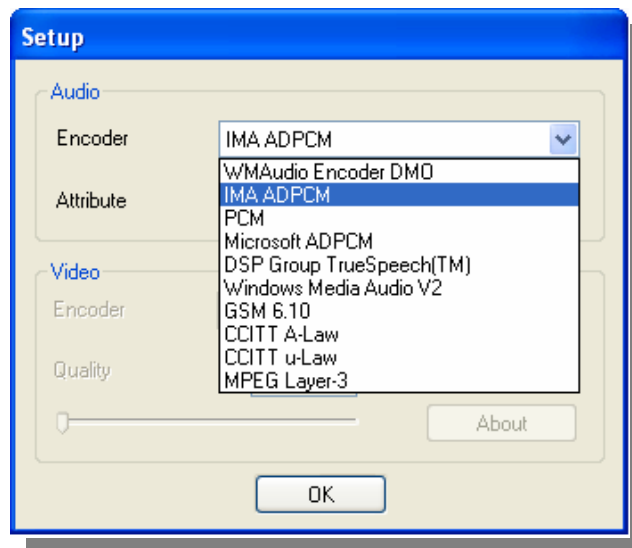
Customizing Audio Recording Settings

To customize audio recording settings:

1. Click the **Setup** button  and click the **Record Storage** tab.
2. Determine the length of recording you want to make. Specify a **Duration** or choose the **Unlimited** recording option.



3. Click  to choose a destination folder in which to save the recorded audio.
4. Next, click the **Record** tab.
5. Click the **Setting** button at the bottom of the Setup dialog box.
6. In the Audio *Setup* dialog box, choose an Audio Encoder from the *Encoder* drop-down list.



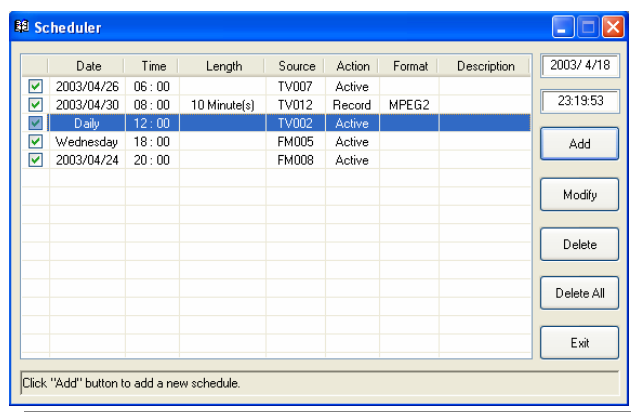
CHAPTER 9

SCHEDULER

The **Scheduler** application allows you to create a list of preset schedules for watching, recording your favorite TV programs or performing Time Shift function. You can set the day and time to turn on the TV or FM radio program and the length of recording.

To run this application, click **Scheduler** from the **UltraTV** program menu or right-click the **Quick TV** launcher located at the lower right corner of the screen then in the list menu, select **Scheduler**.

Preset schedules for tuning into live TV, FM radio broadcasts, as well as preset recording that you've added will be saved to the Scheduler application.



➤ Schedule Listing

This displays a list of preset schedules you have created.

➤ Modify

Select a preset schedule and click this button to make changes.

➤ Delete / Delete All

Click this to delete selected / all schedules.

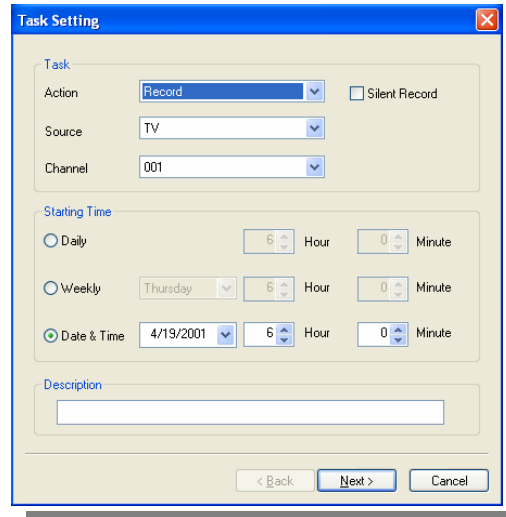
➤ Exit

Click this to exit Scheduler.

Adding Schedules


To create a new schedule:

1. Click the **Add** button in the *Scheduler* dialog box.
2. The following dialog box will then appear:



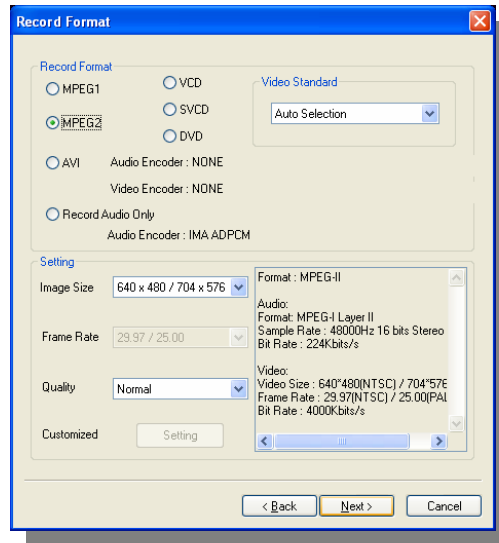
3. From the *Action* drop-down list, select **Active** to watch TV/listen to radio or select **Record** to save a program for future viewing. Otherwise, select **Time Shift** to start the Time Shift function.

Note

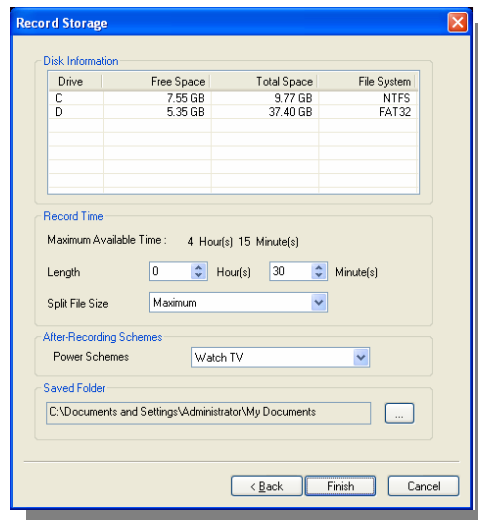
If the **Silent Record** check box is enabled, when the application is performing the recording task, the icon  will appear on the task bar (the lower right corner of the screen). To immediately watch or listen to the TV/FM program which is being recorded, just double-click this icon.

4. From the *Source* drop-down list, select **TV**, **FM**, or an external video source.
5. In the *Channel* option, select the TV or FM radio channel where your favorite program is on. (If you chose an external video source, this option will be disabled.)
6. Then set the time to tune in a live program, perform recording or Time Shift. You can set the schedule on a **Daily** or **Weekly** basis or on a specific **Date & Time**.
7. Type in a description, e.g., the name of a TV program or FM radio station, in the provided text box. Or, you may just leave it blank.
8. If you select **Active** or **Time Shift** in step 3, click **Finish**. Or click **Next** if your choice is **Record** in step 3.

9. When you click **Next**, the *Record Format* dialog box then appears. Choose the file format and customized settings for recording and click **Next**.

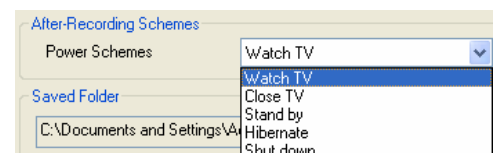


10. In the *Record Storage* dialog box, specify the length of recording. If you intend to burn the recorded files to VCD or DVD, choose whether to slice the file size to fit the target disc capacity in the **Split File Size** list box.



11. In the *After-Recording Schemes*, it automatically switches to the selected power control mode when the schedule recording is completed. Choose an appropriate power control status listed below:

- Watch TV: Switch to real-time TV mode.
- Close TV: Turn off the AVerTV Application.
- Stand by: Turn off AVerTV application and enter Stand by Power Saving Mode.
- Hibernate: Turn off AVerTV application and enter Hibernate Power Saving Mode.
- Shut Down PC: Turn off your computer



12. Click **Finish**.

CHAPTER 10

HOT KEYS

Hot Key	Description	Function
UP/DOWN ARROW	Channel or Frequency Up/Down	Press to go to the next upper/lower TV channel, FM channel, or radio frequency.
L	Channel Loop	Press to go to the previously accessed TV channel or FM channel.
NUMERIC KEYS	Channel or Frequency Selection	Use NUMERIC KEYS to directly enter the TV channel number, FM channel number, or radio frequency.
ESC	Stop or, Change back to Normal View	Stop (playback, recording, Time Shift, or 16-channel preview). Or, change full screen back to normal view.
F1	Help	Open the on-line help.
F5	Full Screen	Show TV/Video in full screen.
F6	Display (OSD) information	Display On-Screen Display information.
+/-	Volume	Press to increase or decrease the volume level.
LEFT/ RIGHT ARROW	Rewind/ Fast Forward	Press to rewind or fast forward (for playback and Time Shift).
A	Audio Mode	Choose between the available audio types.
D	Show/Hide TV Monitor Panel	Toggles between showing and hiding the panel on the TV monitor window.
F	Freeze	Freeze the image of current TV program or video.
M	Mute	Turn off/on the sound.
Ctrl + N	Play Next File	Play the next file in the playlist.
Ctrl + P	Play Previous File	Play the previous file in the playlist.
Ctrl + R	Record	Start recording.


Hot Key	Description	Function
P	Play / Pause	Play/pause (for playback, recording and Time Shift).
S	Snapshot	Capture an image (or a continuous sequence of images).
Ctrl + T	Time Shift	Enable the Time Shift function.
V	Change Video Source	Change between TV and the external video source.

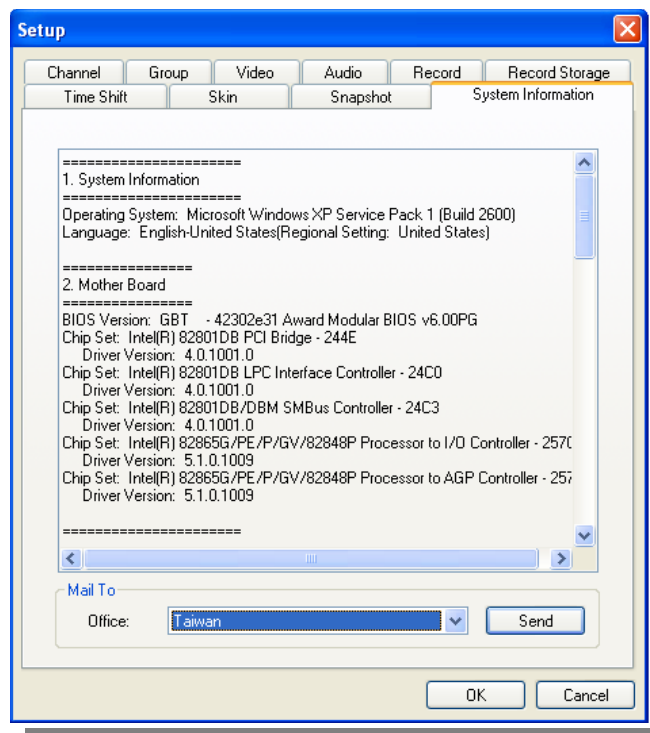
CHAPTER 11

CUSTOMER SERVICE

The UltraTV utility provides a convenient tool, which allows users to contact AVerMedia's customer service department easily via the e-mail for any troubleshooting requests.

To contact the customer service for troubleshooting:

1. Click the **Setup** button  and click the **System Information** tab.
2. You will see all of your system's information is listed under this tab.
3. Select the e-mail address which is near or in your country from the *Office* drop-down list, and then click **Send** to e-mail the system information.



Free Manuals Download Website

<http://myh66.com>

<http://usermanuals.us>

<http://www.somanuals.com>

<http://www.4manuals.cc>

<http://www.manual-lib.com>

<http://www.404manual.com>

<http://www.luxmanual.com>

<http://aubethermostatmanual.com>

Golf course search by state

<http://golfingnear.com>

Email search by domain

<http://emailbydomain.com>

Auto manuals search

<http://auto.somanuals.com>

TV manuals search

<http://tv.somanuals.com>