

Quick Start Guide

CNP-1000C

Welcome to the world of XM® or, as we like to call it, “The XM Nation”! With your decision to subscribe to XM Satellite Radio, you have joined a revolution that is sure to change radio forever. We are thrilled you have chosen XM to be your satellite radio service provider. We will do everything we can to make your listening experience second to none!

The XM Connect and Play is a fully integrated XM receiver and the only thing you need to receive XM Satellite Radio through your XM Ready® home or portable audio system. Getting XM couldn't be simpler*.

The following instructions will guide you through the basics of setup, signal acquisition, and XM service activation. For detailed instructions on using XM with your XM Ready system—such as how to select channels and navigate the XM channel lineup—refer to the user manual that came with your XM Ready home or portable audio system.

What is XM Ready?

An audio system labeled “XM Ready” means that the system with the addition of an XM Connect and Play has everything you need to play XM. Everything else is built right in.

What is the XM Connect and Play?

The XM Connect and Play, an innovative digital antenna platform developed by XM, uses the latest XM technology to allow consumer electronics manufacturers a standard by which to make their products XM Ready. It is something that only XM can offer. The XM Connect and Play is a fully integrated XM receiver and can be used with any XM Ready home or portable audio system.

Note: This product will not work with automotive audio systems, which may be labeled XM Ready. For specific details on supporting products and accessories that work with XM Ready automotive systems, visit: <http://www.xmradio.ca>

About XM Satellite Radio:

XM Satellite Radio is North America's leading provider of satellite radio with more than 6 million subscribers. XM offers up to 100 digital radio channels: commercial-free music channels ranging from hip hop to opera, rock to bluegrass, big band to reggae; talk radio channels, including

news, sports, comedy, and children's programming. Subscribers pay a low monthly fee for the XM service, which was named Best Radio Service by the music industry's leading magazine Billboard at the 2004 Digital Entertainment Awards.

Exclusive programming on XM includes Major League Baseball® games for every team, all season long. You can listen to XM on a variety of satellite radio receivers for the vehicle, home, and portable use.

For more information about XM, visit <http://www.xmradio.ca>



Before You Get Started

The XM Satellite Radio service is broadcast to you from satellites in orbit over 20,000 miles above the earth's surface. XM also has installed a network of terrestrial repeaters across the country to enhance satellite signal strength.

Although the XM Connect and Play can be mounted outdoors, it is usually not necessary. Most users simply place their antenna in the windowsill of a south-facing window with no obvious obstructions to the sky. Try various locations for your XM Connect and Play as you may be surprised at the range of options you have.



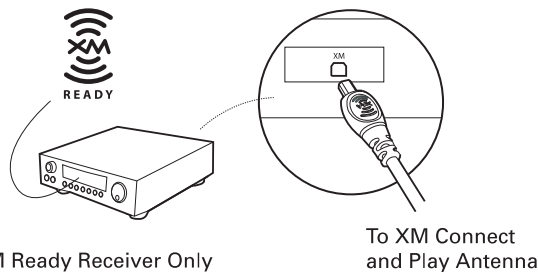
Caution: The XM Connect and Play is for use only with XM Ready home and portable audio systems. It will not work with any product that does not say “XM Ready” or that is for automotive use. Use your XM Connect and Play only with approved XM Ready audio systems and accessories. Do not modify wires or other components in any way. Doing so could: a) cause harm to you or others; b) damage your XM Connect and Play and/or XM Ready audio system or; c) void your product warranty.

*Hardware and required basic monthly subscription sold separately. Premium channel available at additional monthly cost. Other fees and taxes, including a one-time activation fee may apply. Subscription fee is consumer only. Reception of the XM signal may vary depending on location. All fees and programming subject to change. Subscriptions subject to Customer Agreement available at xmradio.com. Only available in the 48 contiguous United States. ©2005 XM Satellite Radio Inc. The XM name, XM Ready, Connect and Play, and related logos are trademarks of XM Satellite Radio Inc. All rights reserved. All other trademarks are the property of their respective owners

Getting Started: 3 Easy Steps!

Step 1: Setting Up Your XM Ready System

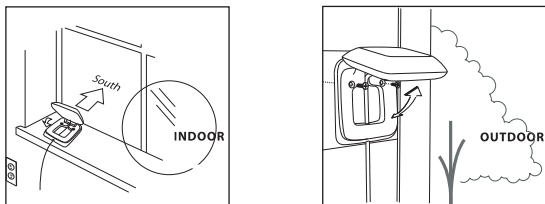
The XM Connect and Play is the only component you need to get XM through your XM Ready audio system. With power to your XM Ready audio system turned OFF, simply connect the end of the antenna cable to the port on the back panel of your XM Ready audio system labeled "XM."



Step 2: Acquiring XM Signal

Turn on the power to your XM Ready audio system. Choose XM as the input source per instructions in your XM Ready audio system's user manual. Tune to Channel 1, the XM Preview Channel.

Move your antenna to various window locations around your home to see where the best reception will be received. Most XM customers place the antenna in a south-facing window with a clear view to the sky. There are two ways to confirm that you have strong signal reception:



Note: The optional CNP-HEXT Connect and Play extension cable is available for installations requiring additional cable length.

1. Signal strength meter: Some XM Ready systems display a signal strength meter for determining signal strength. Refer to your XM Ready audio system's user manual for more information. Otherwise, use the Preview Channel to determine if you are receiving the signal.
2. Hear XM Preview Channel: If you are tuned to Channel 1 and hear the audio, you are receiving satisfactory signal strength to receive the XM service. If you do not hear any audio, it means your antenna is not receiving an adequate satellite or terrestrial repeater signal and must be moved to a more appropriate location.

Once you can hear the Channel 1 broadcast clearly and consistently, you are ready to activate your service

Step 3: Activating Your Service

A one-time activation fee is required to establish an account and activate service with XM Satellite Radio. Applicable activation charges will be added to your first bill.

1. Before activating XM service, make sure your XM equipment is tuned to the XM Preview Channel (Channel 1).
2. Determine your eight-character XM Satellite Radio ID number by referencing the label on your XM Connect and Play packaging, rear cover, or by selecting channel 0. The ID number will appear on the display. Write the number here:

| | | | | | | | |
|--|--|--|--|--|--|--|--|
| | | | | | | | |
|--|--|--|--|--|--|--|--|

Note: Carefully check your XM Satellite Radio ID. The letters I, O, S, and F are not used.

3. Activate your XM Satellite Radio service. Make sure you have a major credit card and your XM Satellite Radio ID number handy.

To activate via the Internet: Visit <https://activate.xmradio.ca/>

To activate via phone: Call 1-877-GET-XMSR (1-877-438-9677). A one-time activation fee will apply.

Using XM Satellite Radio

Upon activation, you should be up and running. Your XM Ready audio system's user manual will provide the specifics on finding your way around the award-winning world of XM and its up to 100 digital channels of audio entertainment. Now, sit back and experience radio as it was meant to be!

Contact XM Listener Care

For customer service, visit our XM Listener Care Center online at <https://activate.xmradio.ca/care/en/>. There, you can activate and deactivate radios, manage your account, add premium services, make inquiries, and more. Or, contact the XM Listener Care Center by calling 1-877-GET-XMSR (1-877-438-9677), Monday through Saturday, 6:30 am – 12:00 am and Sunday, 8 am – 8 pm EST.



Warranty

AUDIOVOX ELECTRONICS CORPORATION (the Company) warrants to the original retail purchaser of this product that should this product or any part thereof, under normal use and conditions, be proven defective in material or workmanship within 12 months from the date of original purchase, such defect(s) will be repaired or replaced with new or reconditioned product (at the Company's option) without charge for parts and repair labor.

To obtain repair or replacement within the terms of this Warranty, the product is to be delivered with proof of warranty coverage (e.g., dated bill of sale), specification of defect(s), transportation prepaid, to an approved warranty station or the Company at the address shown below. This Warranty does not extend to the elimination of externally generated static or noise, to costs incurred for installation, removal, or reinstallation of the product, damage to speakers, accessories, or vehicle and home electrical systems, or malfunction of satellite transmissions, repeater signal, or receiver unit.

This Warranty does not apply to any product or part thereof which, in the opinion of the Company, has suffered or been damaged through alteration, improper installation, mishandling, misuse, neglect, accident, or by removal or defacement of the factory serial number/bar code label(s). THE EXTENT OF THE COMPANY'S LIABILITY UNDER THIS WARRANTY IS LIMITED TO THE REPAIR OR REPLACEMENT PROVIDED ABOVE AND, IN NO EVENT, SHALL THE COMPANY'S LIABILITY EXCEED THE PURCHASE PRICE PAID BY PURCHASER FOR THE PRODUCT.

This Warranty is in lieu of all other express warranties or liabilities. ANY IMPLIED WARRANTIES, INCLUDING ANY IMPLIED WARRANTY OF MERCHANTABILITY, SHALL BE LIMITED TO THE DURATION OF THIS WRITTEN WARRANTY. ANY ACTION FOR BREACH OF ANY WARRANTY HEREUNDER INCLUDING ANY IMPLIED WARRANTY OF MERCHANTABILITY MUST BE BROUGHT WITHIN A PERIOD OF 48 MONTHS FROM DATE OF ORIGINAL PURCHASE. IN NO CASE SHALL THE COMPANY BE LIABLE FOR ANY CONSEQUENTIAL OR INCIDENTAL DAMAGES FOR BREACH OF THIS OR ANY OTHER WARRANTY, EXPRESS OR IMPLIED, WHATSOEVER. No person or representative is authorized to assume for the Company any liability other than expressed herein in connection with the sale of this product.

Some states do not allow limitations on how long an implied warranty lasts or the exclusion or limitation of incidental or consequential damage so the above limitations or exclusions may not apply to you. This Warranty gives you specific legal rights and you may also have other rights which vary from state to state. U.S.A.: AUDIOVOX ELECTRONICS CORPORATION, 150 MARCUS BLVD., HAUPPAUGE, NEW YORK 11788, 1-800-645-4994
CANADA: CALL 1-800-645-4994 FOR LOCATION OF WARRANTY STATION SERVING YOUR AREA.

Technical Information

Height: 29.2 mm (1.15 inches), Width: 77.0 mm (3.03 inches), Depth: 91.3 mm (3.60 inches), Weight: 10 oz (310 g), Power: 2.2 W

FCC Information

This device complies with Part 15 of the FCC Rules. Operation is subject to the following two conditions: 1. This device may not cause harmful interference, and 2. This device must accept any interference received, including interference that may cause undesired operation. IMPORTANT: THE FCC AND FAA HAVE NOT CERTIFIED THE XM CONNECT AND PLAY FOR USE IN ANY AIRCRAFT (NEITHER PORTABLE NOR PERMANENT INSTALLATION). THEREFORE, XM CANNOT SUPPORT THIS TYPE OF APPLICATION OR INSTALLATION.

Free Manuals Download Website

<http://myh66.com>

<http://usermanuals.us>

<http://www.somanuals.com>

<http://www.4manuals.cc>

<http://www.manual-lib.com>

<http://www.404manual.com>

<http://www.luxmanual.com>

<http://aubethermostatmanual.com>

Golf course search by state

<http://golfingnear.com>

Email search by domain

<http://emailbydomain.com>

Auto manuals search

<http://auto.somanuals.com>

TV manuals search

<http://tv.somanuals.com>