

*V Tune Pro*

**TV/ FM Tuner**

Closed Captioning, OSD, RS-232, IR, Contact Closure Control



# Installation and Operations Manual

Manual Rev: 050224  
Firmware Rev: 1.25

205 Commercial Court Morganville, NJ 07751  
Voice: (732) 591-5800 Fax: (732) 591-5801  
[www.auroramultimedia.com](http://www.auroramultimedia.com)

The logo for Aurora Multimedia, featuring a stylized green and black 'A' followed by the word 'Aurora' in a bold, black, sans-serif font, and 'Multimedia' in a smaller, green, sans-serif font below it.

# Table of Contents

|                                |    |
|--------------------------------|----|
| Product Description .....      | 1  |
| Warning .....                  | 2  |
| Unpacking .....                | 2  |
| Installation .....             | 2  |
| System Overview .....          | 2  |
| Remote Control .....           | 3  |
| Front Panel .....              | 4  |
| Setup Mode . .....             | 5  |
| Specifications .....           | 7  |
| Control Port .....             | 8  |
| RS-232 Protocol .....          | 9  |
| Connector Specifications ..... | 11 |
| Troubleshooting .....          | 12 |
| Upgrading Firmware .....       | 13 |
| Warranty .....                 | 14 |
| FCC Statement .....            | 15 |

## 1.0 Product Description

The VTune Pro is a 181-channel Closed Caption TV Tuner with composite video out. Built in OSD allows for on-screen channels and volume. The VTune Pro allows up to 999 units to be connected together via 1 RS-232 port and the advanced addressable RS-232 command set. It is a perfect low cost TV or FM Tuner for any AV System. The VTune is also a great compliment to stand alone display devices such as Plasma, LCD, and CRT displays. Using the RS-232, IR, or Contact Closure Control ensures that this affordable compact TV/FM Tuner is easily integrated into any audio/video system.



Plasma Display

or



LCD Projector

### Features

- ▶ 181 Channel TV Tuner
- ▶ FM Tuner:
  - North America (87.5 - 107.9MHz)
  - International (87.4 - 108.0MHz)
- ▶ Composite Video Output
- ▶ Stereo Audio Output
- ▶ Closed Captioning
- ▶ On Screen Display
- ▶ 2 RS-232 ports for looping, IR, Contact Closure Control
- ▶ Includes Full Featured IR remote control
- ▶ Lockout features
- ▶ OSD Text Generator via RS-232
- ▶ Customizable for control of other RS-232 Devices (call Aurora for info)

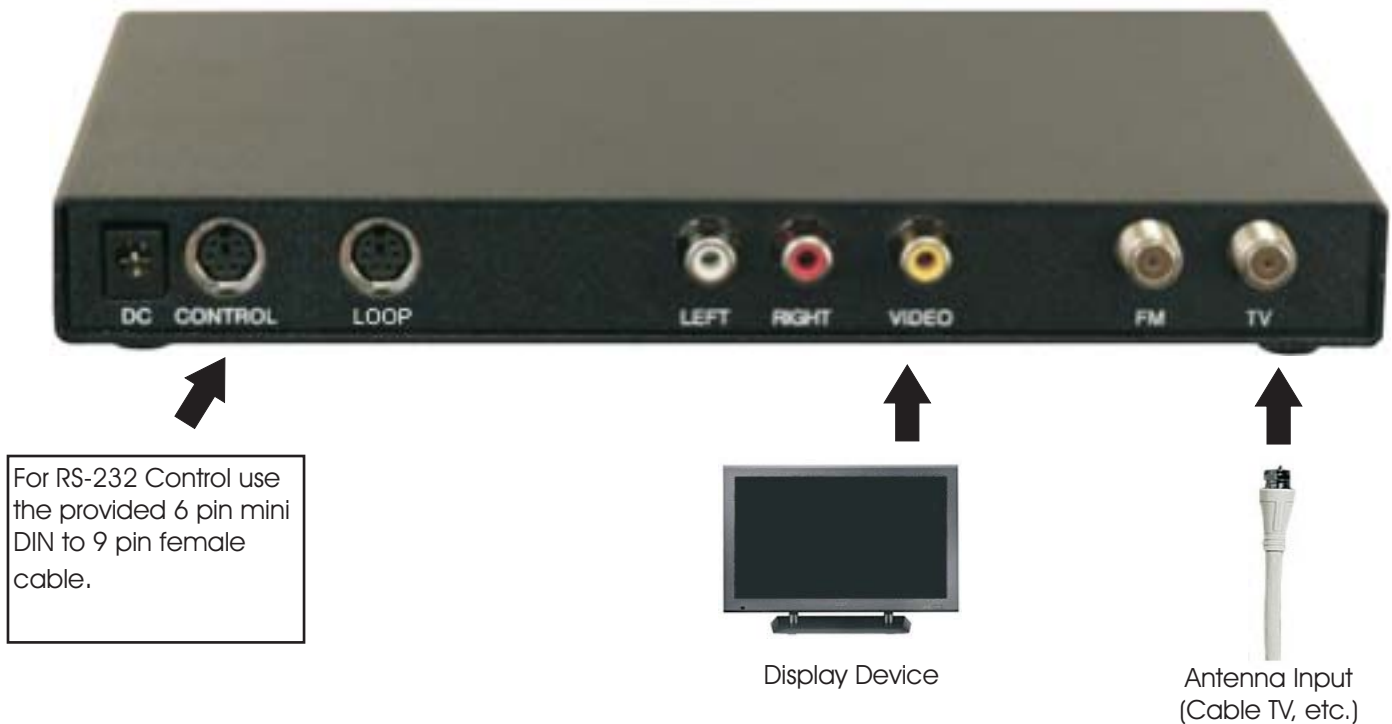
**2.0 Caution:** Static (Still) pictures will cause “burn in” on certain types of displays and may damage the display device. When using static images, reducing brightness and/or contrast can help reduce the risk of damage to the display device. Refer to the display’s owners and technical manual about additional precautions.

### 3.0 Unpacking

- (1) - VTune Pro
- (1) - Installation and Operations Manual
- (1) - 12 Volt power supply
- (1) - IRC-2 Remote
- (1) - 6 Pin Mini DIN Male - Female 9 Pin (Firmware Upgrade / RS-232 Control Cable)
- (1) - 6 Pin Mini DIN Male - 6 Pin Male (Loop through cable for multi-unit control)

Note: Please examine the VTune Pro for any signs of shipping damage.

### 4.0 Installation



### VTune Pro Setup/Connection

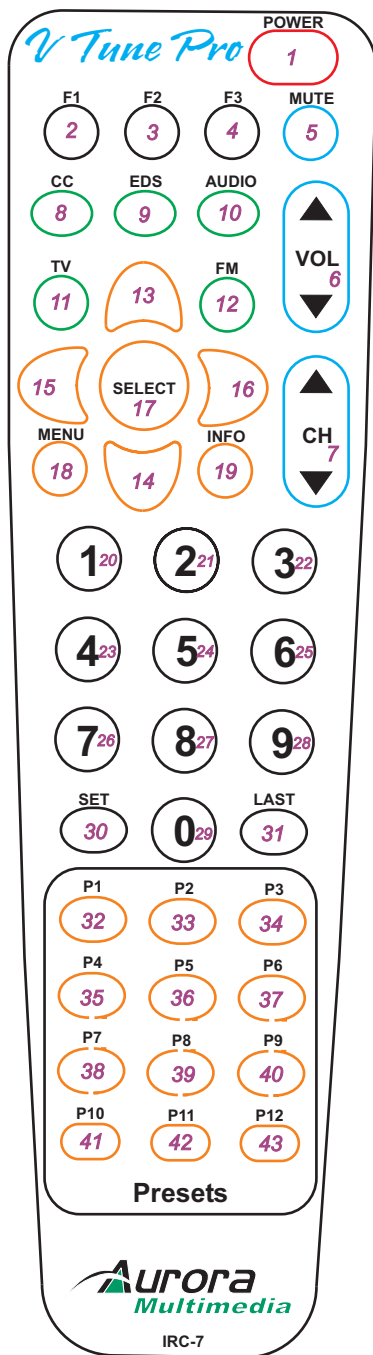
### 5.0 System Overview

The VTune Pro is an RS232, contact closure, and IR controllable 181 Channel TV Tuner and FM Tuner. The unit was designed for easy integration into systems that need remote control of the capabilities. The powerful yet simple RS232 protocol gives a user full 2 way feedback of channel selections. Control systems can take advantage of the RS232 to allow true channel updating on a touch panel or web browser. Ordinary IR only tuners can not give this type of information. Kiosks can take advantage of the contact closure port for direct access of channel, volume, and source selection. Twelve built in presets make getting to a users favorite TV or FM channels a breeze.

Another great feature of the VTune Pro is the ability to upgrade the firmware for additional features or fixes. Try to keep an eye out for the latest releases on [www.auroramultimedia.com](http://www.auroramultimedia.com) to take advantage of the new version. The firmware is easily upload to the VTune Pro with the Flash123 utility that is free on our web site.

## 6.0 Remote Control

### Using the Aurora IRC-7 Remote Control



1. POWER - Turns on and off the VTune
2. F1 - See Setup Mode section for detail
3. F2 - See Setup Mode section for detail
4. F3 - See Setup Mode section for detail

5. MUTE - Toggles the volume mute on/off
6. VOLUME - Ramps the volume up or down
7. CHANNEL - Changes the TV channel + or -

8. CC - Closed Captioning 1 & 2
9. EDS - Extended Data Service
10. AUDIO - Not Used (Future use)

#### Source Selection

11. TV INPUT - Selects the TV Antenna as the Main source
12. FM INPUT - Selects the FM Antenna as the Main source

13. UP ARROW - Not Used (Future use)
14. DOWN ARROW - Not Used (Future use)
15. LEFT ARROW - FM Scan -
16. RIGHT ARROW - FM Scan +
17. SELECT - Confirms selection. Entering Channel 12 then Select will immediately change the channel as compared to waiting for the 3 second time out.

18. MENU - Not Used (Future use)
19. INFO - Displays current channel and volume level

20 - 29 Number Keys - Used for direct channel selection

30. SET - Pressing this and one of the Preset buttons within 1.5 seconds stores current channel.

31. LAST - Returns to the last channel selected

#### Preset Selections

- 32 - 43 Preset Keys - P1 thru P12 selects the stored preset for TV or FM.

## 7.0 Front Panel



The VTune Pro front panel is simple but very effective. The orange seven segment display shows the current TV channel selected for Main or PiP channel.

**Ch+:** Increments the TV or FM channel up

**Ch-:** Decrements the TV or FM channel down

**Vol+:** Raises the volume. Front LED display will show v 52 if the level is at 52 for example. Times out after 3 sec.

**Vol-:** Lowers the volume. Front LED display will show v 52 if the level is at 52 for example. Times out after 3 sec.

**TV:** Selects TV as the source

**FM:** Selects FM as the source

**Power:** Toggles the VTune power on and off. When turning on it takes about 2 seconds to initialize. If the VTune Pro loses power it will turn on when power is returned.

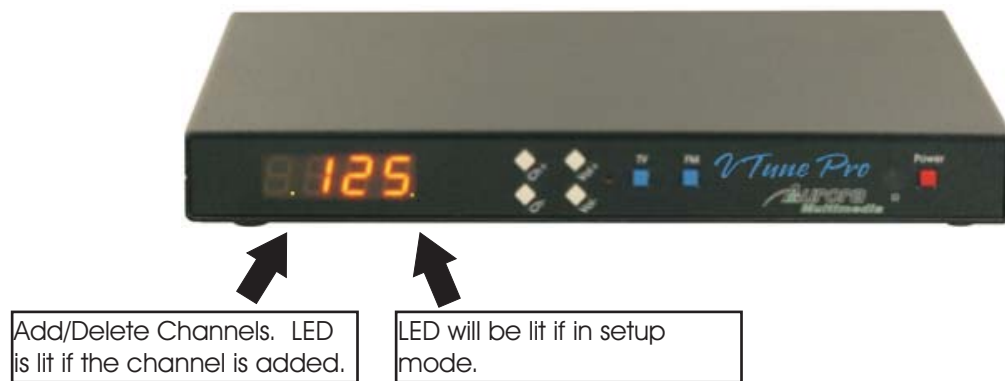
### **Special Functions:**

#### **TV & Vol- pressed together:**

**North America:** With TV as the current selection, pressing these buttons together will allow a user to select broadcast, cable, HRC, IRC. The LED will display the selection with text.

**International:** With TV as the current selection, pressing these buttons together will allow a user to select the country code: AU (C01), EE (C02), FR (C03), GM (C04), NZ (C05), UKA (C06), UKC (C07), Netherlands (C08), Switzerland Cable(C09), Russia (C10), and Switzerland Cable 2(C11). The LED will display the corresponding "C" code selection with text.

## 8.0 Setup Mode



To access setup mode press the following remote sequence quickly: SET, UP, DOWN  
When in setup mode the right most decimal will be lit. To exit setup mode cycle the power using the power button or unplug and plug the power cable.

### Add/Delete Channels

If TV is selected then the current channel will appear. The left most decimal will be lit if the channel is added. To add/delete channels use the left arrow to delete and the right arrow to add for the current displayed channel. To get to other channels use the channel +/- or numeric keypad (US version only. Keypad is used for frequency setup on international version.)

### TV Setup / Country Code

The F1 button toggles through BCST, CABLE, IRC, HRC for the US and AU (C01), EE (C02), FR (C03), GM (C04), NZ (C05), UKA (C06), UKC (C07), Netherlands (C08), Switzerland Cable(C09), Russia (C10), and Switzerland Cable 2(C11) for the international version. The country code for the international version sets up PAL or SECAM and the type of audio used for the country. The frequency per channel will need to be entered in per channel based on location. A typical frequency chart can be found on the Aurora website for download.

### Auto Channel Learn

The F3 button will add/delete the strongest channels. If no stations can be tuned try changing the TV Setup using the F1 button. This currently works only for the US version.

### Device Address

The F2 button will allow changing off the device address. Once pressed the up and down arrows or the keypad will change the address from 0 to 999. If a single unit is to be controlled RS-232 then use 0, otherwise use 1-999.

### Frequency Setup (International Version Only)

Select the channel using the channel +/- only. Once on a channel use the up or down arrow to see what the current frequency is. Even though 4 digits are displayed it shows the first 4 digits of the 5 digit frequency. Ex. 800.25MHz will show 800.2 on the display. To change the frequency use the number keypad to enter the freq as if it was 5 digits. If the wrong value is entered or if too much time is taken to enter the number the VTune will revert back to the old freq. The up/down arrows will increment or decrement the freq by 100KHz.

### FM Volume & Auto Mute

To adjust the FM Volume separately of the main volume to balance the TV level with the FM level

## **8.0 Setup\_Mode (Continued)**

press the FM button. Use the volume +/- to adjust the level. Switch back and forth between a tuned TV channel and a tuned FM channel until it sounds close to the same level. The mute button will toggle the auto FM mute function. If the station is weak the auto mute will turn off the audio instead of having to listen to static. This feature may be disabled to listen to weaker stations with static.

### **Baud Rate**

P1-P5 buttons allow the selection of the VTune Baud rate. LED display will show B 1-5

P1 = 9600  
P2 = 19200  
P3 = 38400  
P4 = 57600  
P5 = 115200

### **Front Key Lockout**

P10 button disables key lockout. LED display shows L 0

P11 button enables key lockout. LED display shows L 1



## **9.0 Specifications**

### **RF Tuner (North America)**

Input Connector : 'F' type female

TV Frequency Range : 55.25 to 801.25 MHz, 31.25 or 62.5KHz fine tune

FM Frequency Range : 76.00 to 108.00 MHz, 50KHz fine tune

Demodulation: Quasi-Split Sound concept

### **RF Tuner (International)**

Input Connector : 'IEC' type female

TV Frequency Range : 48.25 to 855.25 MHz, 31.25/50.0, or 62.5KHz fine tune

FM Frequency Range : 76.00 to 108.00 MHz, 50KHz fine tune

### **Video Output**

Connector: RCA female Yellow

Output: Composite video

Impedance: 75 ohms

Typical Level: 1.0V peak-peak into 75 ohms

### **Audio Outputs**

Connectors: 2 RCA female    1- Left (White)    1- Right (Red)

Output: Unbalanced line level

Output Level: +12dB to -114dB in 64 steps

### **Dimension**

8.4"L x 5.65"D 1"H

### **Power**

12v DC

### **Compliance**

FCC Class B

CE EN 55013:2000

CE EN 55024:1998

CE EN 60065

*Specifications subject to change without notice.*

## 10.0 Control Port

**RS232** - Pins 1,3,5

Pin 1 - Ground      Pin 3 - TX      Pin 5 - RX

**Contact Closure** - Pins 1,2,4,6

Pins 1,2: TV

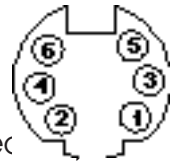
Pins 1,4: Channel +

Pins 1,6: Channel -

Pins 1,4,6: FM

Pins 1,2,4: Volume +

Pins 1,2,6: Volume -



## 11.0 RS-232 Protocol

Baud Rate: Factory Default 9600 8N1 but can be changed up to 115200 (See Setup Sec

*Note: Protocol below is as of firmware version 1.25 New commands will be available on future revisions to give more discrete full featured commands. Check on the Aurora website for the latest firmware and RS232 command additions.*

The VTune Pro is addressable. This allows multiple VTune Pro units to be connected together via the loop port. When using commands with an address of 001 to 999 after the "!" the auto feedback from changes in the volume, channel, etc will no longer work to prevent collision. Polling should be used. Also, "error" will not be sent unless it is specific to an address. When address 0 is used all auto feedback will work. If the commands below are not sent with a three digit address after the "!" And multiple devices are connected via loop port then all devices will respond which is not good practice as collisions will occur. A response will occur when a command is sent with an address except it will now include the address of the unit replying. To talk to all units at the same time with no response use "\*\*\*\*" in place of the 3 digit address. This is useful when multiple units are to be set to a channel or volume level. With some RS-232 devices using a character delay of 1ms may help especially when looping multiple units.

Eg. **!001KEY\_LEFT<CR>** will tell unit addressed with 001 to carry out the key left command  
**~001KEY\_LEFT<CR>** will be the response from the VTune Pro

**!\*\*\*KEY\_CH+ <CR>** will tell all units to increment the TV channel by 1 but there will be no response

? IS A QUERY COMMAND      (Does not have to be Case Sensitive)  
! IS A COMMAND      (Does not have to be Case Sensitive)  
~ IS A RESPONSE      (ALL RESPONSES ARE CAPITALS)

<CR> is 0D hex or 13 decimal

|                             |  |
|-----------------------------|--|
| <b>!KEY_LEFT&lt;CR&gt;</b>  | Left   |
| <b>!KEY_RIGHT&lt;CR&gt;</b> | Right  |
| <b>!KEY_UP&lt;CR&gt;</b>    | Up arrow key                                 |
| <b>!KEY_DOWN&lt;CR&gt;</b>  | Down arrow key                               |
| <b>!KEY_SEL&lt;CR&gt;</b>   | Select                                       |
| <b>!KEY_CH-&lt;CR&gt;</b>   | Channel Down                                 |
| <b>!KEY_CH+&lt;CR&gt;</b>   | Channel Up                                   |
| <b>!KEY_LAST&lt;CR&gt;</b>  | Toggles between the last 2 channels selected |
| <b>!KEY_0&lt;CR&gt;</b>     | 0  |
| <b>!KEY_1&lt;CR&gt;</b>     | 1  |
| <b>!KEY_2&lt;CR&gt;</b>     | 2  |
| <b>!KEY_3&lt;CR&gt;</b>     | 3  |
| <b>!KEY_4&lt;CR&gt;</b>     | 4  |
| <b>!KEY_5&lt;CR&gt;</b>     | 5  |

## 11.0 RS-232 Protocol (Continued)

|                |   |
|----------------|---|
| !KEY_6<CR>     | 6   |
| !KEY_7<CR>     | 7   |
| !KEY_8<CR>     | 8   |
| !KEY_9<CR>     | 9   |
| !KEY_SET<CR>   | Set button for presets  |
| !KEY_P1<CR>    | Preset 1  |
| !KEY_P2<CR>    | Preset 2  |
| !KEY_P3<CR>    | Preset 3  |
| !KEY_P4<CR>    | Preset 4  |
| !KEY_P5<CR>    | Preset 5  |
| !KEY_P6<CR>    | Preset 6  |
| !KEY_P7<CR>    | Preset 7  |
| !KEY_P8<CR>    | Preset 8  |
| !KEY_P9<CR>    | Preset 9  |
| !KEY_P10<CR>   | Preset 10   |
| !KEY_P11<CR>   | Preset 11   |
| !KEY_P12<CR>   | Preset 12   |
| !KEY_VOL+<CR>  | Volume up   |
| !KEY_VOL-<CR>  | Volume down   |
| !KEY_MUTE<CR>  | Volume mute   |
| !KEY_PWR<CR>   | Power On / Off  |
| !KEY_F1<CR>    | Future use.   |
| !KEY_F2<CR>    | Future use.   |
| !KEY_F3<CR>    | Future use.   |
| !KEY_TV<CR>    | TV Source Selection   |
| !KEY_FM<CR>    | FM Source Selection   |
| !KEY_MENU<CR>  | MENU  |
| !KEY_INFO<CR>  | Info  |
| !KEY_CC<CR>    | Closed Captioning   |
| !KEY_EDS<CR>   | Extended Data Services  |
| !KEY_AUDIO<CR> | Audio   |
| !PWRON<CR>     | Power On  |
| !PWROFF<CR>    | Power Off   |
| ?PWR<CR>       | Query Power status responds with ~PWRON<CR> or ~PWROFF<CR>  |
| !VOLxx<CR>     | Volume Level Set xx=00 to 64 Responds with ~VOL52<cr> for volume level 52. 00 is Mute for this command. 52 is zero dB |
| ?VOL<CR>       | Query Volume Level Responds with ~VOL10<CR> for volume level 10.  |
| ?MCH<CR>       | Query Main Channel Responds with ~MCH002<CR> for channel 2.   |
| !MCHxxx<CR>    | Main TV Channel change !MCH025<CR> for channel 25. xxx = 001 to 125   |
| ?MIN<CR>       | Main Input Query responds with ~MTV<CR> or ~MFM<CR>   |
| !FCHxxxx<CR>   | FM Channel Selection. !FCH0987<CR> for 98.7fm.  |
| ?FCH<CR>       | Query FM Channel responds with ~FCH0987<CR> for 98.7fm.   |
| ?VER<CR>       | Version Query responds with ~VER 1.00<CR> if version 1.00 was present.  |
| ?ADDR<CR>      | Query Device Address Responds with ~ADDR001<CR> for address 1.  |
| !ADDRxxx<CR>   | Device Address change !ADDR015<CR> for address 15. xxx = 000 to 999   |
| !CC1<CR>       | Closed Caption 1 selection  |
| !CC2<CR>       | Closed Caption 2 selection  |
| !CCOFF<CR>     | Closed Caption Off selection  |
| ?CC<CR>        | Query Closed Caption responds with either ~CC1<CR>, ~CC2<CR>, ~CCOFF<CR>  |
| !BAUDx<CR>     | Baud Rate Selection. X=1-5 (1=9600, 2 =19200, 3=38400, 4=57600, 5=115200)   |
| ?BAUD<CR>      | Baud responds with ~BAUD1<CR> for 9600.   |
| !LOCKx<CR>     | Lockout Selection. X=0-3 (0=none, 1=keypad, 2=IR, 3=Both)   |
| ?LOCK<CR>      | Lock responds with ~LOCK1<CR> for keypad.   |
| ?AFC<CR>       | Responds with ~AFCxx<CR> xx=2 digit ASCII decimal equivalent  |
| Bit 7 - AFCWIN | 1 = inside AFC Window      0 = Outside AFC Window   |
| Bit 6 - VIFL   | 1 = Video IF Level High      0 = Video IF Level Low   |
| Bit 5 - FMIFL  | 1 = fm IF Level High      0 = fm IF Level Low   |

Bits D4-D1 (AFC4-AFC1) Read the 4 bits separate of the other bits for easy use. eg. (afc & 0x1E) then shift the bits 1 place to the right. This will give you a value of 0x00 to 0x0F. Follow the chart below to determine the signal.

| Bit4 | Bit3 | Bit2 | Bit1 |           |
|------|------|------|------|-----------|
| 0    | 1    | 1    | 1    | -187.5kHz |
| 0    | 1    | 1    | 0    | -162.5kHz |
| 0    | 1    | 0    | 1    | -137.5kHz |
| 0    | 1    | 0    | 0    | -112.5kHz |
| 0    | 0    | 1    | 1    | -87.5kHz  |
| 0    | 0    | 1    | 0    | -62.5kHz  |
| 0    | 0    | 0    | 1    | -37.5kHz  |
| 0    | 0    | 0    | 0    | -12.5kHz  |
| 1    | 1    | 1    | 1    | +12.5kHz  |
| 1    | 1    | 1    | 0    | +37.5kHz  |
| 1    | 1    | 0    | 1    | +62.5kHz  |
| 1    | 1    | 0    | 0    | +87.5kHz  |
| 1    | 0    | 1    | 1    | +112.5kHz |
| 1    | 0    | 1    | 0    | +137.5kHz |
| 1    | 0    | 0    | 1    | +162.5kHz |
| 1    | 0    | 0    | 0    | +187.5kHz |

Bit 0 -PONR 1 = Power on reset after supply breakdown 0 = After a successful reading of the status register

!CxxxFxxxx<CR> TV Channel Frequency setup for International version. !C002F05525<CR> for channel 2 to be set to a freq of 55.25MHz.

### Character Generator Commands

It is sent as a black background with white text similar to closed captioning.

!CTxxFxSxCxxHxxVxx-xxxxxxxxxxxxxxxxxxxxx<cr> Txx = 00 to 30, Fx = 0 or 1, Sx = 0 or 1, Cxx = 0 to 60, Hxx = 1 to 99, Vxx = 1 to 99, -xxxxxxxx = ASCII text up to 60 characters

This is the command that does it all.

T is text timeout which is up to 30 seconds. 00 is no timeout.

F is a function command. 0 does nothing but 1 will clear the entire OSD display

S is character size ranging from 0 (normal) to 1 (Wide)

C is amount of characters to be displayed

H is Horizontal position (column) ranging from 01 to 99

V is Vertical position (row) ranging from 01 to 99

Anything after the - can be text up to 60 characters long. Hex 0x0A can be used to go to the next line if used in the sequence.

The following string will clear the screen then send the text Hello World on the 3 row starting at the 2nd column and timeout after 4 seconds with a text size of 0. !CT04F1S0C11H03V02-Hello World<cr>

It is best if using the text generator to turn off the OSD. If left on any command that utilizes the OSD will clear the last message sent. It is recommended when using the command to use timeouts since static images can burn into a display causing damage.

### General Info

Unless otherwise noted all valid commands are echoed back if properly received unless the "\*\*\*\*" address is used.

When Main TV or FM channel is changed via remote or contact closure, the RS232 is updated by sending a ~MCHxxx<CR> or ~FCHxxx<CR> response as long as the address is zero.

When Volume is changed via remote or contact closure, the RS232 is updated by sending a ~VOLxx<CR> response

Invalid commands will reply with ~ERROR<CR> as long as the address is zero.

Convert the multi-digit ASCII decimal representation response to a true hexadecimal value. Ex. xx = 13 (0x31, 0x33) turn this into 0D. The bit information is once the ASCII to hexadecimal conversion has been done.

## 12.0 Connector Specifications



### **DC**

2.1mm Power Connector (12 volts)  
Center is Positive      Outer Shell is Ground

### **CONTROL**

**RS232** - Pins 1,3,5  
Pin 1 - Ground    Pin 3 - TX      Pin 5 - RX

**Contact Closure** - Pins 1,2,4,6

Pins 1,2: Volume Up      Pins 1,4: Channel +  
Pins 1,2,6: TV      Pins 1,4,6: FM

Pins 1,6: Channel -  
Pins 1,2,4,6: Volume Down



### **LOOP**

**RS232** - Pins 1,3,5  
Pin 1 - Ground    Pin 3 - RX      Pin 5 - TX

### **Video**

**Yellow RCA Phono Connector**

Tip - Signal      Sleeve - Ground

### **Audio**

**White & Red RCA Phono Connector**

White is Left Unbalanced Output  
Tip - Signal      Sleeve - Ground

Red is Right Unbalanced Output  
Tip - Signal      Sleeve - Ground

## **13.0 Troubleshooting**

### **TV Tuner**

**Random noise in video image** - Check antenna position or cable connection. Weak signals can cause noise. Use of an RF Signal amplifier may help. Check the TV Source setting in the menu for proper selection between broadcast, cable, IRC, and HRC.

**White noise** - Check antenna position or cable connection. Check the TV Source setting in the menu for proper selection between broadcast, cable, IRC, and HRC.

**Hum on all channels** - Poor grounding will cause this problem. The cable feed should be grounded at entry into building or house structure. Jensen Transformers model VR-1FF CATV Ground Isolator may also do the trick if the ground problem can not be found.

**Ghosting** - Check antenna position. Sometimes too much gain from the cable source can cause this type of problem. Radio Shack sells 3dB and 6dB attenuators that might help.

### **RS-232**

**No Communication** - Make certain PC or control device is set to the appropriate baud rate to match the baud rate set in the VTune. Check the VTune Pro address.

**'ERROR' is always received** - Some terminal programs send both carriage return and line feed (0Dh, 0Ah) when the enter key is pressed. Make certain it only sends carriage return (0D hex). When writing code try to put a 0Dh 100ms before sending a VTune Pro command to make certain the buffer is empty.

**Intermittent Communication** - We have found adding a character delay of 1ms may help especially when looping multiple units. Also make certain there is at least 100ms between commands.

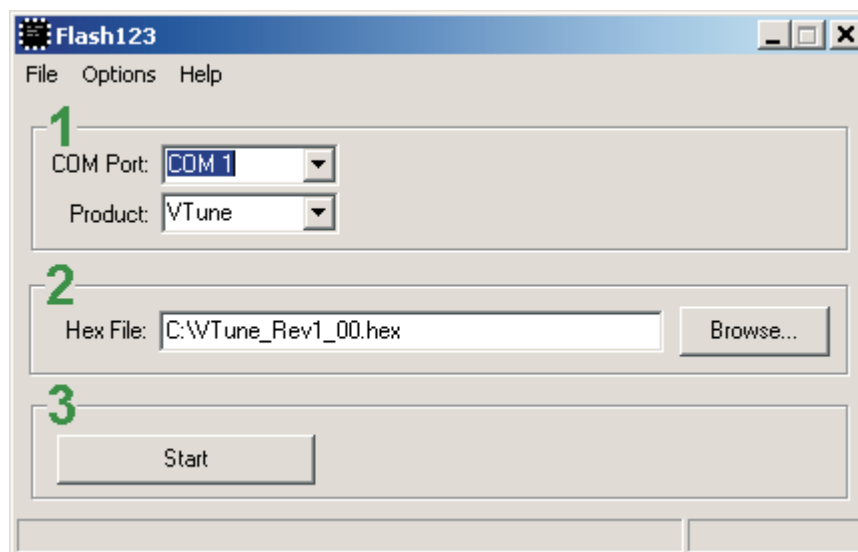
### **Miscellaneous**

**Front Keys do not work** - Check the lockout function as described in setup and serial commands.

**IR does not work** - Check if batteries are in remote or change batteries. Check the lockout function as described in setup and serial commands.

## 14.0 Upgrading Firmware

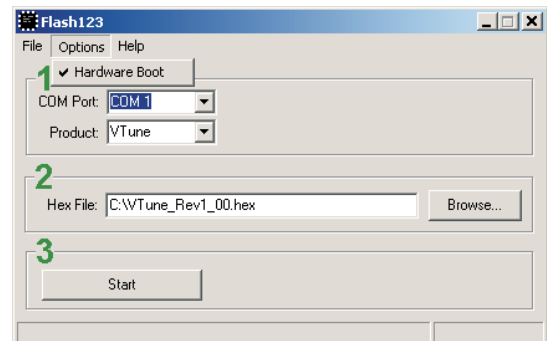
- 1) Download latest copy of Flash123 from [www.auroramultimedia.com](http://www.auroramultimedia.com) under the VTune Pro product section.
- 2) Download the latest version of firmware.
- 3) Install Flash123 on a Windows 2000 or better machine.
- 4) With the power cord unplugged connect the 6 pin Mini Din to 9 pin RS232 cable between the Control port of the VTune Pro and the Com port of the PC. If you do not have a cable the help menu of Flash123 has the pin out.
- 5) Plug the power connector into the VTune Pro and launch the Flash123 program. Make certain the VTune baud rate is set to 9600 and the address is zero.
- 6) Select the Com port, then the file, then click on start. The firmware should start uploading. This process could take a few minutes. Do not turn off the power to the VTune Pro or unplug the RS-232 cable when uploading firmware.



### What to do if flash upgrade fails or is interrupted:

Well everyone needs a backup plan just in case. If a flash upload is interrupted, Flash123 will not work unless Hardware Boot is checked under the options selection. By selecting this, you are telling the Flash123 program it is still in firmware upgrade mode. Once checked click on start again.

If there is difficulty in getting the VTune Pro into boot mode there is a hole large enough for a paper clip in the front panel next to the menu button. With the power unplugged insert and hold the paper clip in while plugging the power in. The LED should not be lit and there will be no output display. Follow the above directions for hardware boot.



## Limited Lifetime Warranty

Aurora Multimedia Corp. ("Manufacturer") warrants that this product is free of defects in both materials and workmanship for the product lifetime as defined herein for parts and labor from date of purchase. This Limited Lifetime warranty covers products purchased in the year of 2003 and after. Product lifetime is defined as 7 years from discontinuance of product. Motorized mechanical parts (Hard Drives, DVD, etc), remotes and cables are covered for a period of 1 year. Supplied batteries are not covered by this warranty. During the warranty period, and upon proof of purchase, the product will be repaired or replaced (with same or similar model) at our option without charge for parts or labor for the specified product lifetime warranty period.

This warranty shall not apply if any of the following:

- A) The product has been damaged by negligence, accident, lightning, water, act-of-God or mishandling;  
or,
- B) The product has not been operated in accordance with procedures specified in operating instructions;  
or,
- C) The product has been repaired and or altered by other than manufacturer or authorized service center; or,
- D) The product's original serial number has been modified or removed: or,
- E) External equipment other than supplied by manufacturer, in determination of manufacturer, shall have affected the performance, safety or reliability of the product.
- F) Part(s) are no longer available for product.

In the event that the product needs repair or replacement during the specified warranty period, product should be shipped back to Manufacturer at Purchaser's expense. Repaired or replaced product shall be returned to Purchaser by standard shipping methods at Manufacturer's discretion. Express shipping will be at the expense of the Purchaser. If Purchaser resides outside the contiguous US, return shipping shall be at Purchaser's expense.

No other warranty, express or implied other than Manufacturer's shall apply.

Manufacturer does not assume any responsibility for consequential damages, expenses or loss of revenue or property, inconvenience or interruption in operation experienced by the customer due to a malfunction of the purchased equipment. No warranty service performed on any product shall extend the applicable warranty period.

This warranty does not cover damage to the equipment during shipping and Manufacturer assumes no responsibility for such damage.

This product warranty extends to the original purchaser only and will be null and void upon any assignment or transfer.



## **FCC Part 15 Statement**

### RADIO AND TELEVISION INTERFERENCE

This equipment has been tested and found to comply with the limits for a Class B digital device, pursuant to Part 15 of the FCC rules. These limits are designed to provide reasonable protection against harmful interference in a residential installation. This equipment generates, uses and can radiate radio frequency energy and, if not installed and used in accordance with the instructions, may cause harmful interference to radio communications. However, there is no guarantee that interference will not occur in a particular installation. If this equipment does cause harmful interference to radio or television reception, which can be determined by turning the equipment off and on, the user is encouraged to try to correct the interference by one or more of the following measures:

- Reorient or relocate the receiving antenna.
- Increase the separation between the equipment and the receiver.
- Connect the equipment into an outlet on a circuit different from that to which the receiver is connected.
- Consult the dealer or an experienced radio/TV technician for help.

You may also find helpful the following booklet, prepared by the FCC: "How to Identify and Resolve Radio-TV Interference Problems." This booklet is available from the U.S. Government Printing Office, Washington D.C. 20402.

Changes and Modifications not expressly approved by the manufacturer or registrant of this equipment can void your authority to operate this equipment under Federal Communications Commissions rules.

In order to maintain compliance with FCC regulations shielded cables must be used with this equipment. Operation with non-approved equipment or unshielded cables is likely to result in interference to radio & television reception.

## Free Manuals Download Website

<http://myh66.com>

<http://usermanuals.us>

<http://www.somanuals.com>

<http://www.4manuals.cc>

<http://www.manual-lib.com>

<http://www.404manual.com>

<http://www.luxmanual.com>

<http://aubethermostatmanual.com>

Golf course search by state

<http://golfingnear.com>

Email search by domain

<http://emailbydomain.com>

Auto manuals search

<http://auto.somanuals.com>

TV manuals search

<http://tv.somanuals.com>