

# AS-1755v

## User Guide

### WARNING

*It is the responsibility of the vehicle operator to ensure their vehicle is parked in a safe and responsible manner.*



- a) Manual transmission:** When leaving the vehicle, it is the user's responsibility to ensure that the gearshift lever is in the NEUTRAL position and the parking brake is engaged in order to avoid accidents upon remote starting.

**b) Automatic transmission:** When leaving the vehicle, it is the user's responsibility to ensure that the gearshift lever is in "Park" in order to avoid accidents upon remote starting.

**(Note:** Make sure that the automatic vehicle cannot start in "Drive".)
- It is the user's responsibility to ensure that the remote starter is disabled or put into valet mode before servicing.

#### **FCC USER NOTICE (U.S.A.):**

This device complies with Part 15 of the FCC Rules. Operation is subject to the following two conditions: (1) this device may not cause harmful interference, and (2) this device must accept any interference received, including interference that may cause undesired operation.

**NOTE:** The manufacturer is not responsible for any radio or TV interference caused by unauthorized modifications to this equipment. Such modifications could void the user's authority to operate the equipment.

# Table of Contents

<b>Introduction</b> .....	2	Remote Door Locks .....	8
<b>Using the Remote Control</b> .....	3	Priority Door Access.....	8
<b>Vehicle Presets</b> .....	3	Ignition-controlled Door Locks .....	8
Heater & Heated Seat .....	3	Ignition Re-lock .....	8
Windshield Wipers, Radio & Headlights .....	4	Secure Lock .....	8
<b>Arming the Starter Kill</b> .....	4	Remote Trunk Release .....	8
<b>Remote-Starting Your Vehicle</b> .....	4	The Starter Kill and the Anti-grind Feature .....	8
Setting Your Vehicle Into Ready Mode.....	4	Safe Start .....	9
Remote-starting.....	5	Installer-programmable Valet Modes.....	9
Driving Off .....	5	Valet Mode Using the Valet Switch.....	9
<b>Remote Starter Features</b> .....	5	"Home Valet™" Mode.....	9
Idle Mode.....	5	Turbo Mode .....	9
Valet Mode .....	6	Engine Run Time .....	10
Ignition Valet .....	6	Constant While Pressed: .....	10
Remote Valet Mode .....	6	Car Finder .....	10
Panic Mode .....	6	Flashing LED.....	10
Quick Lockout™.....	7	Horn Chirp Timing.....	11
Cold Weather Mode .....	7	Multi-car Operation.....	11
Extended Run Time .....	7	<b>Troubleshooting Poor Transmitting Range</b> .....	11
<b>Advanced Features: Installation-programmable</b>		<b>Intrusion Codes through Chirps</b> .....	12
<b>Options</b> .....	7	<b>LIMITED LIFETIME WARRANTY</b> .....	13
Active or Passive Arming of the Starter Kill .....	8		
OEM alarm .....	8		

## Introduction

This is a state-of-the-art remote car starter system. The system is packed with advanced features such as priority access to the driver's door (commodity features) and the Safe Start children safety feature.

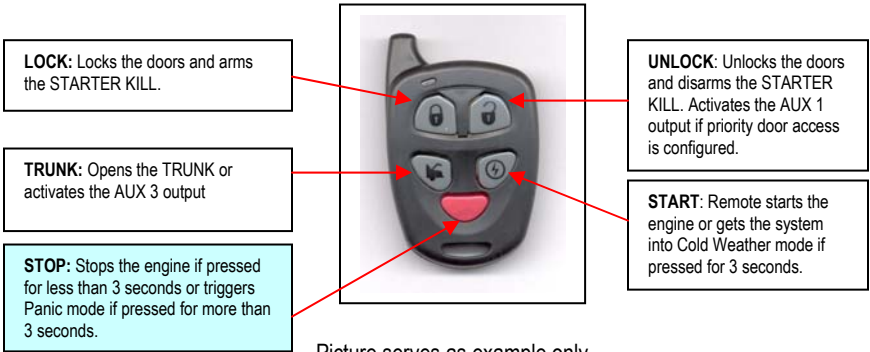
With many advanced functions, this product will satisfy any one of your expectations from high-end commodity and security systems, without neglecting any standard feature commonly offered by entry-level starters.

## Using the Remote Control

Your Remote Car Starter is equipped with a 5-button multi-channel remote control. It can operate two independent vehicles equipped with a Remote Car Starter (see **Multi-Car Operation** section, later in this Guide, for second-car transmitter functions).

**The functions of the transmitter are as follows:**

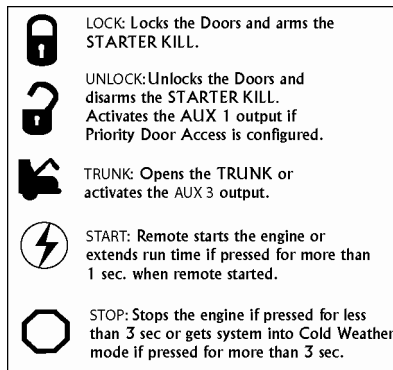
**2<sup>nd</sup> generation transmitters (ASRA-2501 or PLRA-2501):**



Picture serves as example only.

**N.B.:** Pressing the **LOCK** and **UNLOCK** buttons simultaneously will activate the **AUX 2** output.

**1<sup>st</sup> generation transmitters (ASTR-575):**



## Vehicle Presets

### Heater & Heated Seat

When leaving the vehicle it is recommended to preset the accessory controls in preparation for the next remote start. Settings for the blower motor (fan), front and rear, as well as heated seats (if equipped) should not be left on **HIGH**. It is recommended to leave the settings on **LOW** or **MEDIUM** instead.

## Windshield Wipers, Radio & Headlights

Certain vehicles require the radio and / or windshield wiper and / or headlight circuits to become energized while running under remote start. When leaving the vehicle you must ensure that the windshield wiper and headlight switches are **OFF**. Leaving the headlight switch **ON** on certain types of vehicles could cause them to remain **ON** even after remote starter shut down, resulting in a dead battery.

## Arming the Starter Kill

The Starter Kill (if installed) can be configured by the installer so as to arm automatically (Passive Mode) or not to arm automatically (Active Mode). See section **Passive or active arming**, later in this guide, for more details on Passive Mode and Active Mode.

- To **disarm** the Starter Kill, press the **UNLOCK** button on the transmitter. The parking lights will flash **twice**.  
If remote door locks are installed, this will also unlock the doors.
- To **arm** the Starter Kill, press the **LOCK** button on the transmitter. The parking lights will flash once.  
If remote door locks are installed, this will also lock the doors **and arm the OEM alarm**.
- In **Passive Mode**, the Starter Kill will automatically arm if the ignition key is not inserted into the ignition switch within 1 or 3 minutes after unlocking (the key sense feature must be installed).

## Remote-Starting Your Vehicle

If your vehicle has an **automatic transmission**, simply press the **START** button to remote start or stop your vehicle. Skip the next steps on to "Remote-starting".

**Warning:** If your vehicle has an automatic transmission and the parking lights flash 15 times after pressing the **START** button, the parking brake is connected to ground. It is **imperative** that you see your installer and have him disconnect the wire.

### Setting Your Vehicle Into Ready Mode

If your vehicle has a **manual transmission** you must read the following indications. In order to start the vehicle by remote, the unit must first be set to Ready Mode. If the unit is not set to Ready Mode, it cannot remote start the vehicle.

**Please note that Ready Mode can be enabled by the remote or the handbrake, depending on the option that was selected by your installer. Therefore, you must follow the appropriate procedure between the two described below in order to set your vehicle into Ready Mode.**

Once the system is set to Ready Mode, the vehicle can be remote started and stopped at any time. The system will exit Ready Mode if a door, the hood or the trunk is opened, if the brake pedal is pressed, if the parking brake is disengaged or if the ignition key is turned to the **IGNITION ON (RUN)** position.

### To set the system to Ready Mode:

If Ready Mode is enabled by remote	If Ready Mode is enabled by handbrake
1. Ensure that all the doors, hood and trunk are closed. Make sure that the gear selector is in the neutral position.	
2. With the engine already running, apply the parking brake <b>once</b> and release the brake pedal. <b>Make sure to release the brake pedal.</b>	2. With the engine already running, apply the parking brake <b>twice</b> and release the brake pedal. <b>Make sure to release the brake pedal.</b> <b>The parking lights will flash 3 times quickly and remain lit.</b> <b>Skip to step 4.</b>

<p>3. Within 20 sec. of engaging the parking brake, press and hold <b>LOCK</b>, <b>UNLOCK</b> or <b>START/STOP</b> on the transmitter. <b>The parking lights will flash 3 times quickly and remain lit.</b></p>	
<p>4. Remove the key: the engine will continue running.</p>	
<p>5. Exit the vehicle and close all doors, hood and trunk.</p>	
<p>6. Press for approx. 1 second either:</p> <ol style="list-style-type: none"> <li><b>LOCK</b> to lock the doors and shut down the engine;</li> <li><b>UNLOCK</b> to unlock the doors and shut down the engine;</li> <li><b>START/STOP</b> to shut down the engine without affecting the doors.</li> </ol>	

### Remote-starting

Press the **START** button for approx. 1 second. The parking lights will come **ON** to inform you that the Remote Car Starter has received your signal. Approximately 5 seconds later, the engine will start. The parking lights will remain **ON** during the pre-programmed run time of the engine.

If the vehicle does not start at the first attempt, the system will shut down, wait a few seconds and try to start the engine again. **If your vehicle is equipped with an automatic transmission**, there will be 3 start attempts before the system gives up.

### Driving Off

With the vehicle running under remote control, press the **UNLOCK** button to disarm and unlock the doors. Enter the vehicle and do the following:

Turn the ignition key to the **IGNITION ON (RUN)** position. (**Do not turn the key to the CRANK position while the engine is running.** This would cause the starter motor to re-engage.)

Press the brake pedal to disengage the remote starter unit.

You are now ready to drive off.

## Remote Starter Features

### Idle Mode

**Convenience feature:** Idle Mode allows you to keep the engine running and the doors locked while you stop, for example, at a convenience store or for a short delivery.

This feature allows you to let the remote starter take over control of the vehicle (i.e. no Key in the Ignition Switch) while the engine is running. For example, if you stop for a delivery or at a convenience store, lock your vehicle and leave it running for the length of a run cycle while you are away.

#### **To leave the vehicle in Idle Mode if your vehicle has an automatic transmission:**

- With the engine running, press the **LOCK** or **UNLOCK** button (to unlock the doors) or the **START** button on the remote control until the parking lights come on.
- Remove the key and exit the vehicle. The engine will go on running.
- Lock the doors if needed.

The engine will go on running until the user re-enters the vehicle or until the expiration of the Engine Run Time.

**If your vehicle has a manual transmission, Idle Mode can be activated through the same routine as that used for Ready Mode; at the last step, the TRUNK button is pressed instead of the other buttons:**

1. Ensure that the doors are all closed and that the gearshift lever is in the **NEUTRAL** position.
2. With the engine already running, apply the parking brake and release the brake pedal. **Make sure to release the brake pedal.**
3. Within 20 sec. push **LOCK**, **UNLOCK** or **START** on the transmitter. **The parking lights will flash 3 times quickly and remain lit.**
4. Remove the key: the engine will go on running.
5. Exit the vehicle and close the door.
6. Press the **TRUNK** button until the system is armed (the doors will be locked if remote door lock is installed).

If the pre-programmed run-time expires or if the user shuts down the engine by remote control, the vehicle will get in Ready Mode.

**Caution!!!** Do not leave children or pets unattended in a vehicle standing in Idle Mode.

### Valet Mode

When your vehicle is in Valet Mode, the remote starter functionalities are disabled. If the vehicle needs to be serviced, or if you park it indoors, the Valet Mode will prevent the engine from being remote-started accidentally.

### Ignition Valet

This feature will allow you to remotely put your system into Valet Mode by using the ignition key instead of the Valet button as above. Ignition Valet can be used without a Valet button installed.

#### To put the system i n t o Valet Mode:

Insert the ignition key into the ignition switch. Within 10 sec., turn the key 5 times successively into the **IGNITION ON / RUN** and **OFF** positions. The parking lights will flash three times to indicate that the vehicle is now in Valet Mode. The LED on the antenna will come **ON** solid.

#### To take the system o u t o f Valet Mode:

Insert the ignition key into the ignition switch. Within 10 sec., turn the key 5 times successively into the **IGNITION ON / RUN** and **OFF** positions. The parking lights will flash twice to indicate that the vehicle is now in Valet Mode. The LED on the antenna will go out.

**Note:** With the Remote Valet activated, the remote starter and alarm functions will be disabled.

### Remote Valet Mode

This feature will allow you to remotely put your system into Valet Mode by using the transmitter instead of the Valet button as above.

#### Getting into Valet Mode

- Hold the **UNLOCK** and **START** buttons simultaneously for 3 second.
- **The Parking Lights will flash 3 times.**  
The LED on the antenna will remain on solid.

#### Getting out of Valet Mode

- Hold the **UNLOCK** and **START** buttons simultaneously for 3 second.
- **The Parking Lights will flash 2 times.**  
The LED on the antenna will turn off.

### Panic Mode

**Note:** Panic Mode can only be activated if the horn has been adequately configured by your installer.

If your system is equipped with the [2<sup>nd</sup> generation remote](#):

Press and hold the **STOP** button for more than 3 seconds until the sound signal starts and the parking lights flash.

If your system is equipped with the [1<sup>st</sup> generation remote](#):

In an emergency situation, you can activate Panic Mode using the **LOCK** or **UNLOCK** button. This will:

- shut down the engine,
- disarm the Starter Kill and
- unlock the doors (with the **UNLOCK** button)
- activate the horn for 30 sec.
- or lock the doors (with the **LOCK** button),

**To activate Panic Mode:**

Press and hold the **UNLOCK** or **LOCK** button for approximately 3 sec. until the sound signal starts and the parking lights flash: this will unlock or lock the doors accordingly before the sound signal starts.

Panic Mode will automatically shut down after 30 sec.

**Note:** To stop Panic Mode before the end of its delay, press the **LOCK** or **UNLOCK** button until the sound signal stops.

Quick Lockout™

(Also called **Secure Panic**.) For fast protection in emergency situations, the system will **LOCK** all doors when you **press the brake pedal while you hear the sound signal**. (**Quick Lockout** is only available when **Panic Mode** has been set off.)

Cold Weather Mode

When Cold Weather Mode is active, the engine starts every 2 hours and runs for 3 minutes (or for 8 or 20 minutes with diesel engines). Cold Weather Mode automatically ends after 24 hours.

**To enter Cold Weather Mode:**

Press and hold the **START** button for 3 seconds until the parking lights flash three times.

**To exit Cold Weather Mode, do any one of the following actions:**

- Open the hood.
- Start the engine by remote.
- Turn the ignition key to the **IGNITION ON (RUN)** position.
- Press and hold the **START** button for 3 sec. (**the parking lights will flash once**).

**If Safe Start is enabled, you can activate Cold Weather Mode by**

- Pressing and releasing the **START** button, then
- Pressing and holding the **START** button until the Parking Lights flash 3 times

Extended Run Time

With the vehicle running under a remote start, pressing and holding the **START** button for more than 1 second will reset the run time counter to zero and restart the run time cycle from the beginning. To stop the vehicle, at any moment, simply press the **STOP** button. This procedure can only be carried out once per remote start.

**Example:** if your Module is programmed for a run time of 3 minutes and your vehicle has been running for 2 minutes already, pressing the **START** button will reset the counter to zero and the Engine will run for another cycle (in this case, 3 minutes).

**Advanced Features: Installation-programmable Options**

The Remote Car Starter was designed with flexibility and OEM integration in mind. With its programmable options, this unit can single-handedly control nearly any electrical system in your vehicle.

**Caution:** The programming of your system should be left to a professional. Changing any one of the settings may affect the operation of your Remote Car Starter.

### Active or Passive Arming [of the Starter Kill](#)

The Starter Kill can be configured either to Passive Mode (so as to arm automatically) or Active Mode (so as to require user intervention for arming). By default, your Remote Car Starter is configured to **Passive Mode**. In Passive Mode, the Starter Kill will automatically arm **60 seconds** after the last door is closed. Starter Kill will not arm if a door is left open, or if you re-open a door within the 60-second delay.

**Important note:** When the Remote Car Starter re-arms automatically, you can disarm the Remote Car Starter by simply pressing the **UNLOCK** button.

### OEM alarm

The factory alarm can be armed by pressing the **LOCK** button (active arming only). If a door or hood is open or if the key is turned in the ignition, the horn will honk.

### Remote Door Locks

If your Remote Car Starter was installed with the Remote Door Locks option, you will have the convenience of remote keyless entry. See section **Arming the Starter Kill**, earlier in this Guide, for further instructions on remote door locking and unlocking.

### Priority Door Access

If the Remote Door Locks option is installed on your vehicle, this safety feature allows you unlock solely the driver's door with a single press of the **UNLOCK** button on the transmitter; upon a second press of the **UNLOCK** button, all the other doors will unlock.

### Ignition-controlled Door Locks

This is an added security feature. If your Remote Car Starter was installed with the Ignition-Controlled Door Locks option, the doors will automatically be locked as soon as the ignition key is turned to the **IGNITION ON (RUN)** position while the brakes are pressed. When the key is turned to the **OFF** position, the doors will automatically be unlocked.

### Ignition Re-lock

On Remote Car Starters of this series, when Ignition-controlled Door Locks are enabled and the ignition key is in the **IGNITION ON (RUN)** position, should any door be unlocked and opened, all doors will be relocked next time the brake pedal is pressed.

### Secure Lock

(Disabled by default.) Before it can remote-start your vehicle, the Remote Car Starter must first disarm the factory security system. The Secure Lock feature may be required on certain vehicle models with factory security systems that automatically unlock the doors when the security system is disarmed.

To keep your vehicle protected when the factory security system is disarmed for a remote start, Secure Lock will relock your doors as soon as the vehicle has started. Once the engine run cycle ends, Secure Lock will rearm your factory security system.

### Remote Trunk Release

If your system was installed with the Remote Trunk Release option, you can open your trunk by pressing the **TRUNK** button for 3 seconds on the remote transmitter. [The OEM alarm will be disarmed until the LOCK button is pressed.](#)

### The Starter Kill and the Anti-grind Feature

With this added security feature, the system will prevent your vehicle from starting with the ignition key when the Starter Kill is armed. If your Remote Car Starter was installed with the Starter Kill option, one will not be able to start your vehicle with the key unless the system has been unlocked and disarmed first, or put into Valet Mode.



**Note:** If the Starter Kill is installed, your vehicle will benefit from a protection against starter motor damage that could occur after remote-starting the engine should the user, by force of habit, turn the ignition key to the **CRANK** position.

### Safe Start

If this feature is enabled, the user must press the **START** button 2 times within 3 seconds to remote-start the vehicle. This will eliminate accidental remote starts, e.g. when children are playing with the transmitter.

If **Swap Start Mode** is selected, to remote-start your vehicle press **LOCK** and **UNLOCK** simultaneously. The **AUX 2** output can be activated by pressing the **START** button.

### Installer-programmable Valet Modes

#### Valet Mode Using the Valet Switch

##### To put the system i n t o Valet Mode:

1. Turn the ignition key to the **IGNITION ON (RUN)** position.
2. Within 3 sec., press the valet button. The parking lights will flash 3 times.
3. Turn the ignition key to the **IGNITION OFF** position.

The LED on the antenna will come **ON** solid indicating that the vehicle is now in valet mode.

##### To take the system o u t o f Valet Mode:

1. Turn the ignition key to the **IGNITION ON (RUN)** position.
2. Within 3 sec., press and release the valet button.

The parking lights will flash twice and the LED on the antenna will come **OUT**, indicating that the vehicle is now out of valet mode.

**Note:** Once Valet Mode is activated, the remote starter and alarm functions will be disabled.

#### “Home Valet™” Mode

If configured at installation, this feature will remotely set the vehicle to a no-remote-start mode: if the vehicle is parked indoors there is no danger of it starting accidentally by remote control.

**Note:** Once the Home Valet Mode is activated, the vehicle will not start by remote **but the OEM alarm functions will still be enabled.**

##### To take the system i n t o Home Valet Mode:

Press the **LOCK** or **UNLOCK** button.

Within 3 seconds, press the **STOP** button until the Parking Lights go out

##### To take the system o u t o f Home Valet Mode:

Turn the ignition key to the **IGNITION ON (RUN)** position.

The system will warn you if someone attempts to start your vehicle while it stands in Home Valet Mode. The parking lights will:

Go **ON** then **OFF**; then

Flash **twice**, pause; then

Flash **twice** again.

### Turbo Mode

If Turbo Mode is configured at installation, it will allow a turbocharger to idle down after the user leaves the vehicle: the unit will take over the vehicle and keep it running for 60 seconds (or until it is shut down by remote control), then shut down the engine.

**If your vehicle has an automatic transmission, proceed as follows to set the system to Turbo Mode:**

1. With the engine already running, press the **LOCK** button on the transmitter until the parking lights come **ON**.

2. Remove the ignition key from the ignition switch.  
**The engine will go on running.**
3. Exit the vehicle and close the door.  
**Press the TRUNK button to lock the doors; the engine will shut down after 60 seconds of Turbo Mode.**

**If your vehicle has a manual transmission, follow all steps of the Ready Mode routine, to activate Turbo Mode:**

1. Ensure that all the doors are closed and that the shifter is in the **Neutral** position.
2. With the engine already running, apply the parking brake and release the brake pedal.  
**Make sure to release the brake pedal.**
3. Within 20 sec. press **LOCK**, **UNLOCK** or **START** on the transmitter.  
**The parking lights will flash 3 times quickly and remain lit.**
4. Remove the key: the engine will go on running.
5. Exit the vehicle and close the door.
6. Press and hold either:
  - a. **LOCK** to lock the doors and shut down the engine after 60 sec.;
  - b. **UNLOCK** to unlock the doors and shut down the engine after 60 sec.;
  - c. **START** to shut down the engine immediately, without affecting the doors (this will by-pass Turbo Mode).
  - d. **TRUNK TO SET THE VEHICLE INTO IDLE MODE**

#### Engine Run Time

If you have a gas engine, your Remote Car Starter can be programmed to run the engine for 3, 15, or 25 minutes (15 minutes by default). If you have a diesel engine, the Remote Car Starter can be programmed to run the engine for 8, 20, or 30 minutes (20 minutes default).

#### Constant While Pressed:

If enabled and if your vehicle is compatible, this option allows you to open or close your windows at a distance, open or close the sunroof or even to open or close a sliding door:

- Pressing and holding the **LOCK** button for more than 3 seconds will lock all doors and will send a constant pulse as long as the **LOCK** button is held down (maximum of 15 seconds). This constant pulse can be configured to activate certain functionalities such as rolling up the windows – **Please refer to your installer to see if your vehicle is compatible with this option.**
- Pressing and holding the **UNLOCK** button for more than 3 seconds will unlock all doors and will send a constant pulse as long as the **UNLOCK** button is held down (maximum of 15 seconds). This constant pulse can be configured to activate certain functionalities such as rolling down the windows – **Please refer to your installer to see if your vehicle is compatible with this option.**

#### Car Finder

When enabled, the Car Finder option will help you locate your vehicle by generating a pulsating signal through the horn or the siren. To hear the signal, press **LOCK** and **UNLOCK** simultaneously. This will cause one chirp and one flash of the lights every time you repeat the sequence.

#### Flashing LED

The user may decide to turn on or off LED on the antenna flashing at any moment. To do so, simultaneously press the **TRUNK** and **LOCK** buttons on the transmitter:

**Flashing LED on:** the L.E.D. will flash under active arming to indicate that the Starter Kill is active.

**Active Arming:** the LED will flash normally.

**Passive Arming:** the LED will not flash during the countdown preceding the activation of the Starter Kill. Once the Remote Car Starter is armed, the LED will flash at a

slower rate.

**Starter kill ON / Alarm OFF:** the LED will flash twice quickly until the OEM alarm is armed. Once the OEM alarm is armed, it will flash at a slower rate.

**In Valet Mode:** the LED will remain lit without flashing.

**Flashing LED off:** the LED will not flash even when the Remote Car Starter is armed (either under active or passive arming). Nevertheless, if the Remote Car Starter enters Valet Mode, the LED will still remain lit without flashing as long as the ignition is off.

#### Horn Chirp Timing

The pulse duration can be configured by your installer (from 5 ms to 200 ms).

#### Multi-car Operation

This option allows the owner of two vehicles, both equipped with the same Remote Car Starter model, to control both systems with a single remote control. To control the second vehicle, simultaneously press the **TRUNK** button and the button of the function you wish to use.

**Note:** Your remote control must be configured for second car operation by the installer.

Press **TRUNK + LOCK** button simultaneously: .....**LOCK**

Press **TRUNK + UNLOCK**:.....**UNLOCK**

Press **TRUNK + START**: .....**START**

Press **TRUNK + STOP**:.....**STOP**

Press **TRUNK + START** for 3 sec:.....**Cold Weather Mode**

### Troubleshooting Poor Transmitting Range

Many factors may affect the operating range of the transmitter. Some of these are:

- The condition of the battery in the transmitter.
- The operating environment (for example: downtown radio-frequency noise, airports, cellular phone towers...)
- Metal: any type of metal will affect operating range. This includes the metal in the car.
- The shape of the vehicle can affect range as well; vans in general have an especially poor range.
- The shape of the roof and A-pillars brings about considerable radio-frequency deflection (in this case the signal from the remote control). As a result, the direction in which the vehicle is facing in relation to the remote control can affect the range. Straight on – standing in front of the vehicle – generally gives you the greatest range; the second best performance is from the back. Using the remote control from either side of the vehicle will usually give the lowest range.
- The range will be significantly lower in a crowded parking lot than in open space.
- Always hold the transmitter high, approximately at shoulder height. Holding the transmitter against your chin will also increase your range: your head acts as an antenna.
- The operating range will be somewhat lower on vehicles equipped with an aftermarket or factory alarm.

## Intrusion Codes through Chirps

If there has been an intrusion in the vehicle while it was locked and armed, the OEM alarm will provide an intrusion code matching the type of intrusion that took place. Disarm the alarm (**UNLOCK**) to identify the intrusion.

### Diagnostics – Chirps Table

Chirps	Description
1	• Power OFF, power ON
3	• Hood
4	• Door
6	• Ignition

## LIMITED LIFETIME WARRANTY

### REMOTE STARTERS:

As the manufacturer, 4366859 Canada Inc. ("Autostart") warrants to the original consumer purchaser only (**nontransferable**) that the remote starter module (control box) shall be free from defects in materials and workmanship **for as long as the original consumer purchaser continuously owns the vehicle in which the remote starter was originally installed**, as specified below:

- 1) For the first two years after the date of manufacture, as specified by the serial number on the module, Autostart will replace the remote starter module free of charge with a new remote starter module.
- 2) For the third year and any consecutive year after the date of manufacture, as specified by the serial number on the module, Autostart will provide to the original consumer purchaser a new remote starter module, for a repair charge of \$25.00 USD.

In all cases, the consumer must return the remote starter module to the point of purchase, and must provide a copy of the proof of purchase to said retailer. A remote starter module will be returned to the retailer for the consumer to claim within a 4 (four)-week period. For case (2), a certified cheque or money order in the amount of \$25.00 USD must accompany the remote starter module, or the retailer may refuse the return.

### ACCESSORIES:

Autostart warrants to the original consumer purchaser only (**nontransferable**) that it will replace any Autostart accessory part for a one-year period from date of purchase. Accessories will only be replaced if proven defective in material or workmanship, and if, when the accessory is returned to the point of purchase, the retailer is provided with a copy of the proof of purchase. The accessory will be sent to the retailer for the consumer to claim within a 4 (four)-week period.

### THE WARRANTY IS VOID IF:

- 1) The product has been damaged, altered in any way or tampered with, without the explicit written consent of an Autostart technician. For remote starter modules, this includes the opening or removal of the plastic covering of the module, or the removal or alteration of the barcode label on the plastic covering of the module.
- 2) The product is damaged due to accident, fire, flood, shipping and handling, misuse, neglect, or other conditions beyond the control of Autostart.
- 3) The product has been installed or repaired by anyone other than a certified technician.
- 4) The product has been improperly installed or used.

### THE WARRANTY DOES NOT COVER:

- 1) Batteries.
- 2) Scratched or worn transmitter cases.
- 3) Installation and/or removal charges for all remote starter modules and accessories.
- 4) Shipping and handling charges incurred for product exchange or replacement.
- 5) Any material damages other than to the product itself.
- 6) Harnessing, L.E.D. lights, switches, inverters, relays, etc.

THIS LIMITED LIFETIME WARRANTY SHALL CONSTITUTE THE SOLE LIABILITY OF AUTOSTART FOR OUR PRODUCTS, AND IS IN LIEU OF ALL OTHER WARRANTIES, EXPRESSED OR IMPLIED. THERE ARE NO WARRANTIES OF MERCHANTABILITY AND FITNESS FOR A PARTICULAR PURPOSE. NO PERSON, FIRM OR CORPORATION IS AUTHORIZED TO ASSUME FOR AUTOSTART ANY OTHER LIABILITY WITH RESPECT TO THE SALE OR USE OF OUR PRODUCTS. AUTOSTART'S LIABILITY, WHETHER BASED ON CONTRACT, TORT, WARRANTY, STRICT LIABILITY, OR ANY OTHER THEORY, SHALL NOT EXCEED THE PRICE OF THE INDIVIDUAL UNIT WHOSE DEFECT FOR DAMAGE IS THE BASIS OF THE CLAIM. UNDER NO CIRCUMSTANCE WILL AUTOSTART, ITS DISTRIBUTORS OR THEIR AGENTS BEAR ANY LIABILITY WHATSOEVER FOR INCIDENTAL OR CONSEQUENTIAL DAMAGES.

The parties hereto elect that any dispute regarding the present document be submitted to the appropriate Court located in the Province of Quebec, District of Montreal. The parties hereto agree that this document is governed by and interpreted in accordance with the law of Quebec. If the purchaser is located in a province of Canada other than Quebec, all matters dealing with the warranty of quality will be governed by and interpreted in accordance with the law of Ontario. If the purchaser is located outside Canada, all matters dealing with the warranty of quality will be governed by and interpreted in accordance with the United Nations Convention on Contracts for the International Sale of Goods (the "Vienna Convention").

## Free Manuals Download Website

<http://myh66.com>

<http://usermanuals.us>

<http://www.somanuals.com>

<http://www.4manuals.cc>

<http://www.manual-lib.com>

<http://www.404manual.com>

<http://www.luxmanual.com>

<http://aubethermostatmanual.com>

Golf course search by state

<http://golfingnear.com>

Email search by domain

<http://emailbydomain.com>

Auto manuals search

<http://auto.somanuals.com>

TV manuals search

<http://tv.somanuals.com>