

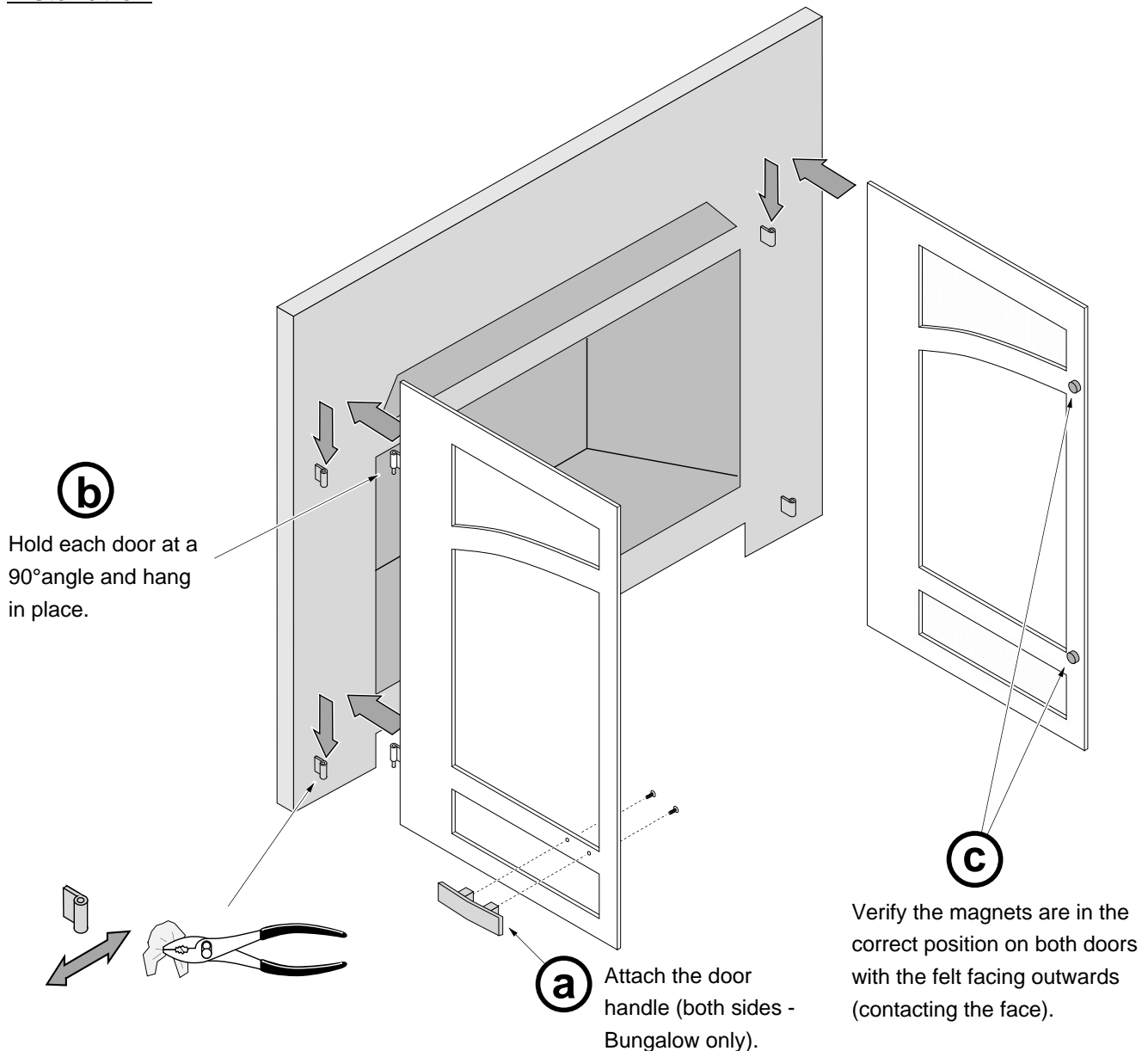
Compatibility:

- DVL Insert with Double-Door Face (95100065 or 95100066)
- DVS Insert with Double-Door Face (95100060 or 95100061)

Packing List:

- (2) Doors
- (4) #8 Screws (Bungalow Only)
- (2) Handles (Bungalow Only)

Installation



ADJUSTING THE HINGES:

If the gap between the doors is not even, the hinges on either side may be adjusted by bending the hinge tabs in or out. This allows the doors to be aligned left or right, top to bottom.

NOTE: place a rag over the hinge posts before grasping the hinge posts with pliers to prevent scratching.

Free Manuals Download Website

<http://myh66.com>

<http://usermanuals.us>

<http://www.somanuals.com>

<http://www.4manuals.cc>

<http://www.manual-lib.com>

<http://www.404manual.com>

<http://www.luxmanual.com>

<http://aubethermostatmanual.com>

Golf course search by state

<http://golfingnear.com>

Email search by domain

<http://emailbydomain.com>

Auto manuals search

<http://auto.somanuals.com>

TV manuals search

<http://tv.somanuals.com>