

SM523-G | Cup Holder Mount with Flexible Goosneck Shaft with Slim-Grip™ Smartphones

SM050-2 Slim-Grip™
Universal Phone Holder



88mm expandable to 138mm
with Extra Long Support Legs

SP-SM050-LF
Extra Long
Support Legs
(2 Pack)



GN033-SBH
Cup Holder Mount



Package Contents:

- (1) GN033-SBH - 5" Cup holder mount with flexible goosneck shaft
- (1) SM050-2 Universal phone and portable device holder
- (1) SP-SM050-LF - Extra Long Support Legs (2 Pack) for larger phones

Holder included is Universal, designed to fit nearly ALL non-flip mobile phones regardless of whether a protective case or silicone sleeve is attached to the phone.

- Most smartphones, mobile phones, and cell phones
- Palm - All non-flip models
- LG Mobile Phones - All non-flip models
- Apple iPhone - All models
- Samsung - All non-flip models
- RIM BlackBerry - All non-flip models
- Sony Ericsson - All non-flip models
- HTC Phones - All non-flip models
- Sanyo - All non-flip models
- Motorola Phones - All non-flip models
- Pantech - All non-flip models
- Nokia Mobile Phones - All non-flip models
- Google - All non-flip models

No tools required for installation.

Note: mount may not work with adjustable, "pop out" cup holders or oversize cup holder openings found in full-size pickup trucks.

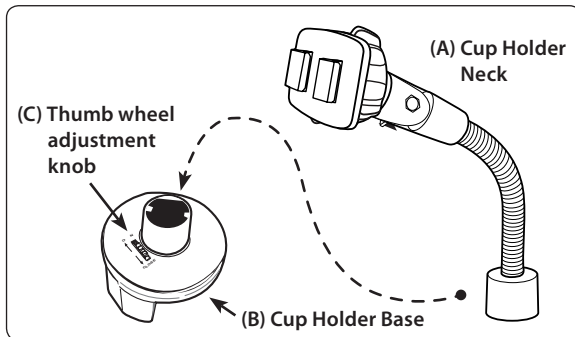


Do not place mount in or near an air bag deployment zone or where it will obstruct view of the road.

All brand names and product names are trademarks or registered trademarks of their respective owners.

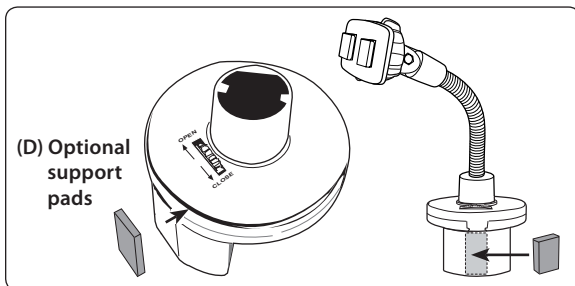
Cup Holder Mounting

- Step 1. Connect the goosneck shaft (A) to the cup holder base (B) by aligning the groove on the base to the ridge inside of the bottom of the shaft.



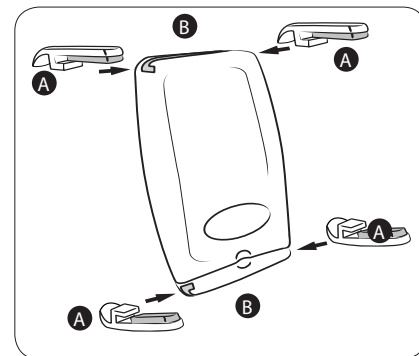
- Step 2. Place the Universal Cup Holder Mount into the designated cup holder in the vehicle. Adjust the thumb wheel adjuster (C) to open or close the cup holder prongs to fit in the cup holder.

- Step 3. For oversize cup holder openings or the adjustable "pop out" cup holders use the optional self-adhesive side support pads (D). Install the pads by removing the adhesive backing and placing it on the flat surface side of the cup holder support leg.



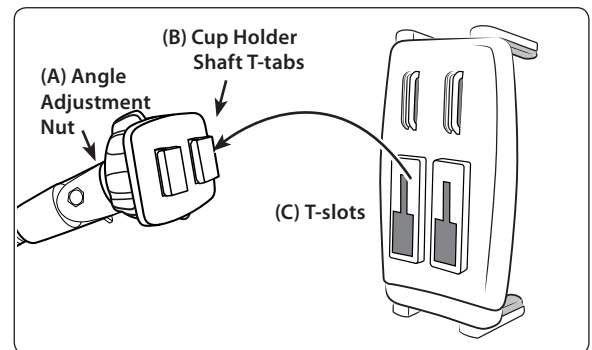
Install the Support Legs to the Holder

- Step 1. Insert the holder support legs (A) by sliding them into the support leg grooves (B) on the top and bottom of the holder.



iPhone Holder Attachment

- Step 1. Adjust the angle of the dual T head by tightening the adjustment nut at the top of the cup holder shaft (A).
- Step 2. Install the iPhone holder to the shaft by inserting the dual T-tabs (B) on the shaft into the T-slots (C) on the back of the holder.



Safety Precautions

Do not install Arkon products over an air bag cover or within the air bag deployment zone. Arkon Resources, Inc. assumes no responsibility of liability for injury or death as a result of car crashes and/or air bag deployment.

Arkon is not responsible for any damages caused to your car, your device, or yourself due to the installation or use of this pedestal mount.

ARKON
RESOURCES INC.

The Mobile Mounting Specialists™

Consumer Hotline:

USA (800) 841-0884

INT'L (626) 254-9005

Monday - Friday 9 am - 5 pm, PST

www.arkon.com

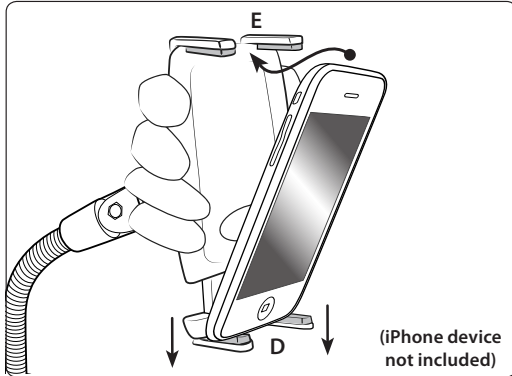
Arcadia, CA 91006 USA

Designed in USA | Made in Taiwan & China

© Copyright 2010 Arkon Resources, Inc.

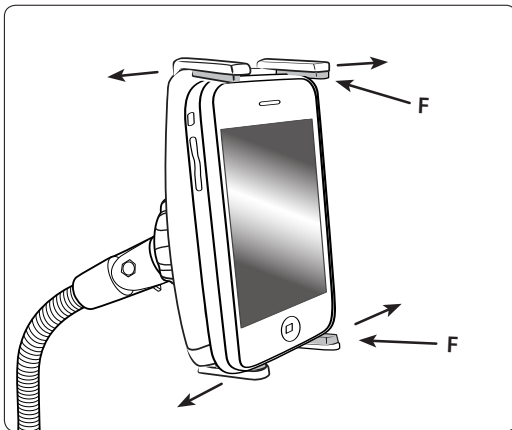
Insert Phone into Holder

Step 1. Secure holder with your hand for support, as spring-loaded mechanism requires significant force to operate. Hold your phone and insert into universal holder by pushing down on the bottom spring-loaded support legs with moderate amount of pressure (D). Slide the top of the device under the top support legs (E) until it fits snugly in the holder.



Adjusting Holder to Fit Phone

Step 1. If necessary, adjust the support legs (F) on top and bottom by sliding them laterally to avoid any buttons or ports that may be on your phone.



Fitting for Larger Phones

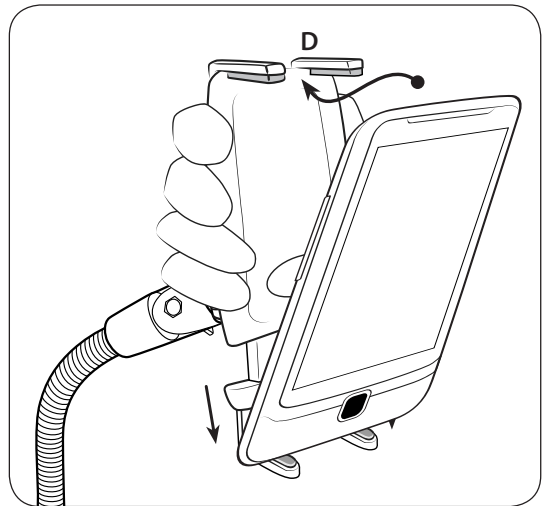
For larger phones such as the T-Mobile G2 and Motorola Droid X, install the two included extra long support legs

Step 1. Insert the extra long support legs (A) by sliding them into the support leg grooves (B) on the top and bottom of the holder.



Insert Phone into Holder

Step 1. Secure holder with your hand for support, as spring-loaded mechanism requires significant force to operate. Hold your phone and insert into universal holder by pushing down on the bottom spring-loaded support legs with moderate amount of pressure (C). Slide the top of the device under the top support legs (D) until it fits snugly in the holder.



! Safety Precautions
 Do not install Arkon products over an air bag cover or within the air bag deployment zone. Arkon Resources, Inc. assumes no responsibility of liability for injury or death as a result of car crashes and / or air bag deployment.
 Arkon is not responsible for any damages caused to your car, your device, or yourself due to the installation or use of this pedestal mount.

ARKON RESOURCES INC. The Mobile Mounting Specialists™

Consumer Hotline: www.arkon.com
 USA (800) 841-0884 Arcadia, CA 91006 USA
 INT'L (626) 254-9005 Designed in USA | Made in Taiwan & China
 Monday - Friday 9 am - 5 pm, PST © Copyright 2010 Arkon Resources, Inc.

Free Manuals Download Website

<http://myh66.com>

<http://usermanuals.us>

<http://www.somanuals.com>

<http://www.4manuals.cc>

<http://www.manual-lib.com>

<http://www.404manual.com>

<http://www.luxmanual.com>

<http://aubethermostatmanual.com>

Golf course search by state

<http://golfingnear.com>

Email search by domain

<http://emailbydomain.com>

Auto manuals search

<http://auto.somanuals.com>

TV manuals search

<http://tv.somanuals.com>